

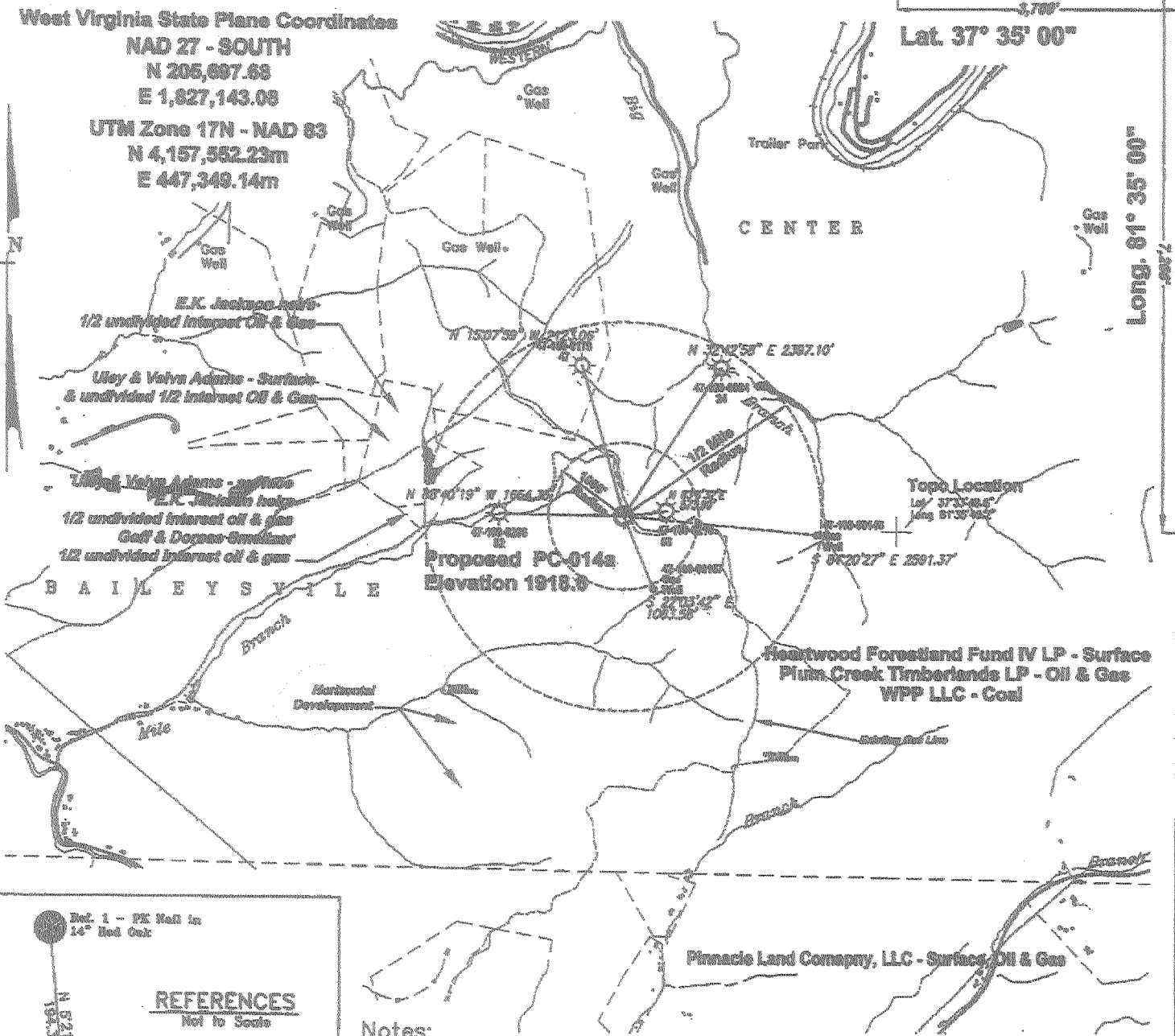
3769

West Virginia State Plane Coordinates

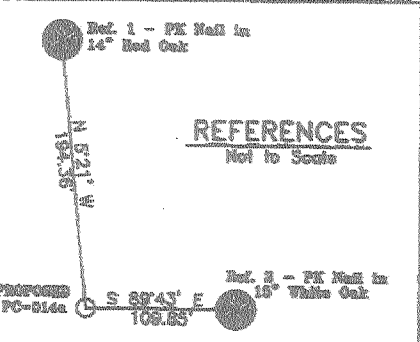
NAD 27 - SOUTH
N 205,887.69
E 1,827,143.08
UTM Zone 17N - NAD 83
N 4,157,552.23m
E 447,349.14m

Lat. 37° 35' 00"

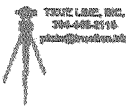
Long. 81° 35' 00"



7208



Notes:
No Dwellings exist within 200 feet of PC-014a
No Domestic Wells within 1000' of Gas Well PC-014a
Property Information taken from Wyoming Co. Tax Records
(+) Denotes location of well on USGS map.



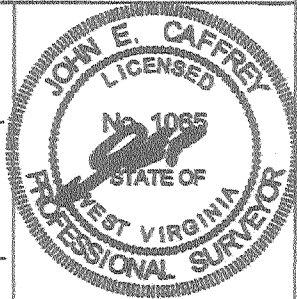
FILE No. CDX Gas
DIRECTORY C:\CDX Gas\CDX-2005\PC-001
DRAWING NAME PlatPC-014a.dwg
SCALE 1" = 1000'
MINIMUM DEGREE OF ACCURACY 1 : 2500
PROVEN SOURCE OF ELEVATION GPS GLOBAL POSITIONING SYSTEM (Sub meter accuracy)

I THE UNDERSIGNED, HEREBY CERTIFY THAT THIS PLAT IS CORRECT TO THE BEST OF MY KNOWLEDGE AND BELIEF AND SHOWS ALL THE INFORMATION REQUIRED BY LAW AND THE REGULATIONS ISSUED AND PRESCRIBED BY THE DEPARTMENT OF MINES.

(SIGNED)

[Handwritten Signature]

R.P.S. 1065



STATE OF WEST VIRGINIA
DEPARTMENT OF ENVIRONMENTAL PROTECTION
OFFICE OF OIL AND GAS
CHARLESTON, WV



DATE AUGUST 28, 2005

OPERATOR'S WELL No. PC-014a

API WELL No. 47 - 109 - 02585C
STATE COUNTY PERMIT

WELL TYPE: OIL GAS X LIQUID INJECTION WASTE DISPOSAL
(IF "GAS") PRODUCTION X STORAGE DEEP SHALLOW CBM X
LOCATION: ELEVATION 1918.8 WATER SHED MILE BRANCH OF INDIAN CREEK OFF GUYANDOTTE RIVER
DISTRICT BAILEYSVILLE COUNTY WYOMING
QUADRANGLE PINEVILLE, WV

SURFACE OWNER HEARTWOOD FORESTLAND FUND IV LP ACREAGE 2694.26 (Tax Map 116, Parcel PO 111-7)
ROYALTY OWNER PLUM CREEK TIMBERLANDS LP LEASE ACREAGE 60.372.5

PROPOSED WORK: LEASE No. _____
DRILL X CONVERT DRILL DEEPER REDRILL FRACTURE OR
STIMULATE PLUG OFF OLD FORMATION PERFORATE NEW
FORMATION OTHER PHYSICAL CHANGE IN WELL (SPECIFY) _____

PLUG AND ABANDON CLEAN OUT AND REPLUG
TARGET FORMATION POCAHONTAS NO. 3 SEAM ESTIMATED DEPTH 1056 SEP 23 2005
WELL OPERATOR CDX Gas, LLS DESIGNATED AGENT JOSEPH A. ZUPANICK
ADDRESS PO Box 609 ADDRESS PO BOX 609
Pineville, WV 24874 PINEVILLE, WV 24874

WYO 25851C

State of West Virginia
Division of Environmental Protection
Section of Oil & Gas
Well Operator's Report of Well Work

Farm name: Heartwood Forestland

Operator Well No: PC-014A

Location: Elevation: 1916.25'

Quadrangle: Pineville

District: Balleysville

County: Wyoming

Latitude: 3769 Feet South of 37 Deg. 35 Min. 00 Sec.
Longitude: 7266 Feet West of 81 Deg. 20 Min. 00 Sec.

Company: CDX Gas, LLC
P.O. Box 609
Pineville, WV 24874

Agent: JOSEPH A. ZUPANICK

Inspector: Barry Stollings
Permit issued: 09/19/2005
Well Work commenced: 10/04/2005
Well Work completed: 11/16/2005
Verbal plugging
Permission granted on:
Rotary x Cable _____ Rig
Total depth (ft) 1058.9'
Fresh water depths (ft) N/A
Salt water depths (ft) N/A
Is coal being mined in the area (Y/N)? Y
Coal depths (ft): 371, 1058.

Casing & Tubing Size	Used in Drilling	Left in Well	Cement Fill up Cu.ft.
13 3/8"	43	43	29.9
9 5/8 "	274	274	85.8
7"	808	808	121.4

RECEIVED
Office of Oil & Gas
Office of Chief
JAN 10 2006
WV Department of
Environmental Protection

OPEN FLOW DATA

Producing formation (Non-producer)
Gas: Initial open flow N/A Mcf/d Oil: Pay zone depth (ft) _____
Final open flow N/A Mcf/d Initial open flow _____ Bbl/d
Time of open flow between initial and final tests: _____ hours
Final open flow _____ Bbl/d
Static rock pressure _____ psig (surface pressure) after _____ hours

Second Producing formation _____
Gas: Initial open flow _____ Mcf/d Oil: Pay zone depth _____ (ft)
Final open flow _____ Mcf/d Initial open flow _____ Bbl/d
Time of open flow between initial and final tests: _____ hours
Final open flow _____ Bbl/d
Static rock pressure _____ psig (surface pressure) after _____ hours

Third Producing formation _____
Gas: Initial open flow _____ Mcf/d Oil: Pay zone depth _____ (ft)
Final open flow _____ Mcf/d Initial open flow _____ Bbl/d
Time of open flow between initial and final tests: _____ hours
Final open flow _____ Bbl/d
Static rock pressure _____ psig (surface pressure) after _____ hours

Note: ON BACK OF THIS FORM, PUT THE FOLLOWING: 1) DETAILS OF PERFORATED INTERVALS, FRACTURING OR STIMULATING, PHYSICAL CHANGE, ETC. 2) THE WELL LOG WHICH IS A SYSTEMATICK DETAILED GEOLOGICAL RECORD OF ALL FORMATIONS, INCLUDING COAL ENCOUNTERED BY THE WELLBORE.

For: Charles T. Akers
CDX Gas, LLC
By: [Signature]
Date: 1/9/2006

JAN 13 2006

WV 0 2585

