

10902770 F

WW-7  
8-30-06



West Virginia Department of Environmental Protection  
Office of Oil and Gas

**WELL LOCATION FORM: GPS**

API: 47-109-02770 WELL NO.: PC-003C

FARM NAME: Heartwood Forestland

RESPONSIBLE PARTY NAME: New River Energy Corporation

COUNTY: Wyoming DISTRICT: Center

QUADRANGLE: Pineville, WV

SURFACE OWNER: Heartwood Forest Land Fund

ROYALTY OWNER: Plum Creek Timberlands

UTM GPS NORTHING: 4157136.982

UTM GPS EASTING: 451512.003 GPS ELEVATION: 584.972 1918.70 FT

The Responsible Party named above has chosen to submit GPS coordinates in lieu of preparing a new well location plat for a plugging permit or assigned API number on the above well. The Office of Oil and Gas will not accept GPS coordinates that do not meet the following requirements:

1. Datum: NAD 1983, Zone: 17 North, Coordinate Units: meters, Altitude: height above mean sea level (MSL) – meters.
2. Accuracy to Datum – 3.05 meters
3. Data Collection Method:

Survey grade GPS  : Post Processed Differential

Real-Time Differential

Mapping Grade GPS  : Post Processed Differential

Real-Time Differential

4. Letter size copy of the topography map showing the well location.

I the undersigned, hereby certify this data is correct to the best of my knowledge and belief and shows all the information required by law and the regulations issued and prescribed by the Office of Oil and Gas.

Received  
Office of Oil & Gas  
DEC 15 2014

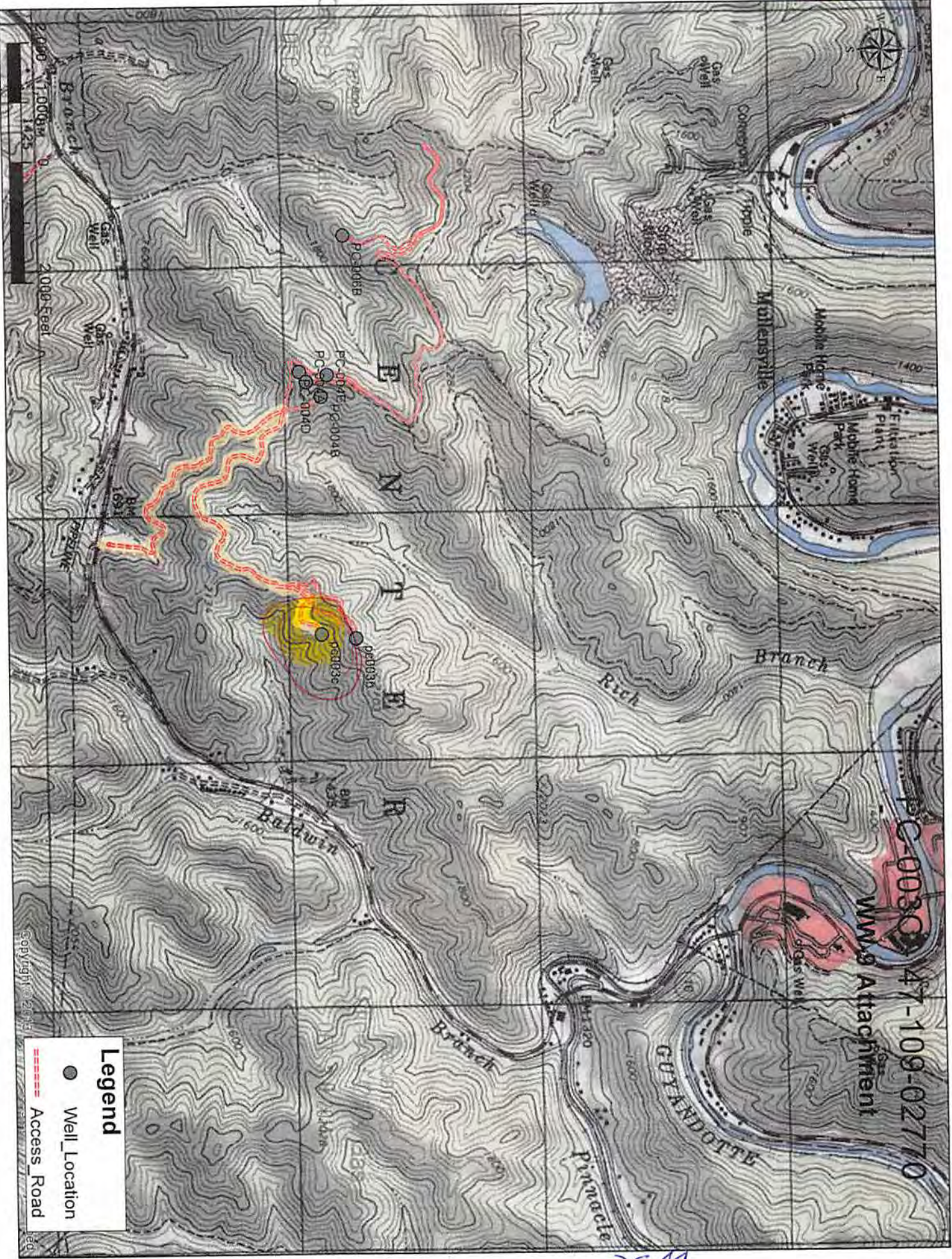
Signature

BUSINESS DEVELOPMENT MNG.  
Title

12/12/14  
Date



10902770P



**Legend**

- Well\_Location
- Access\_Road

PC-0030  
 47-109-02770  
 WWS Attachment

DSM