

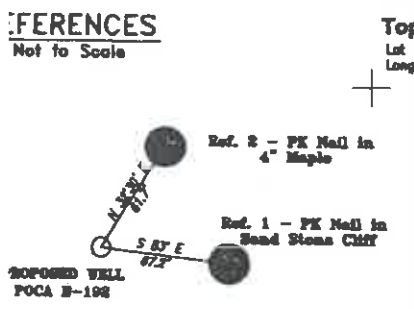
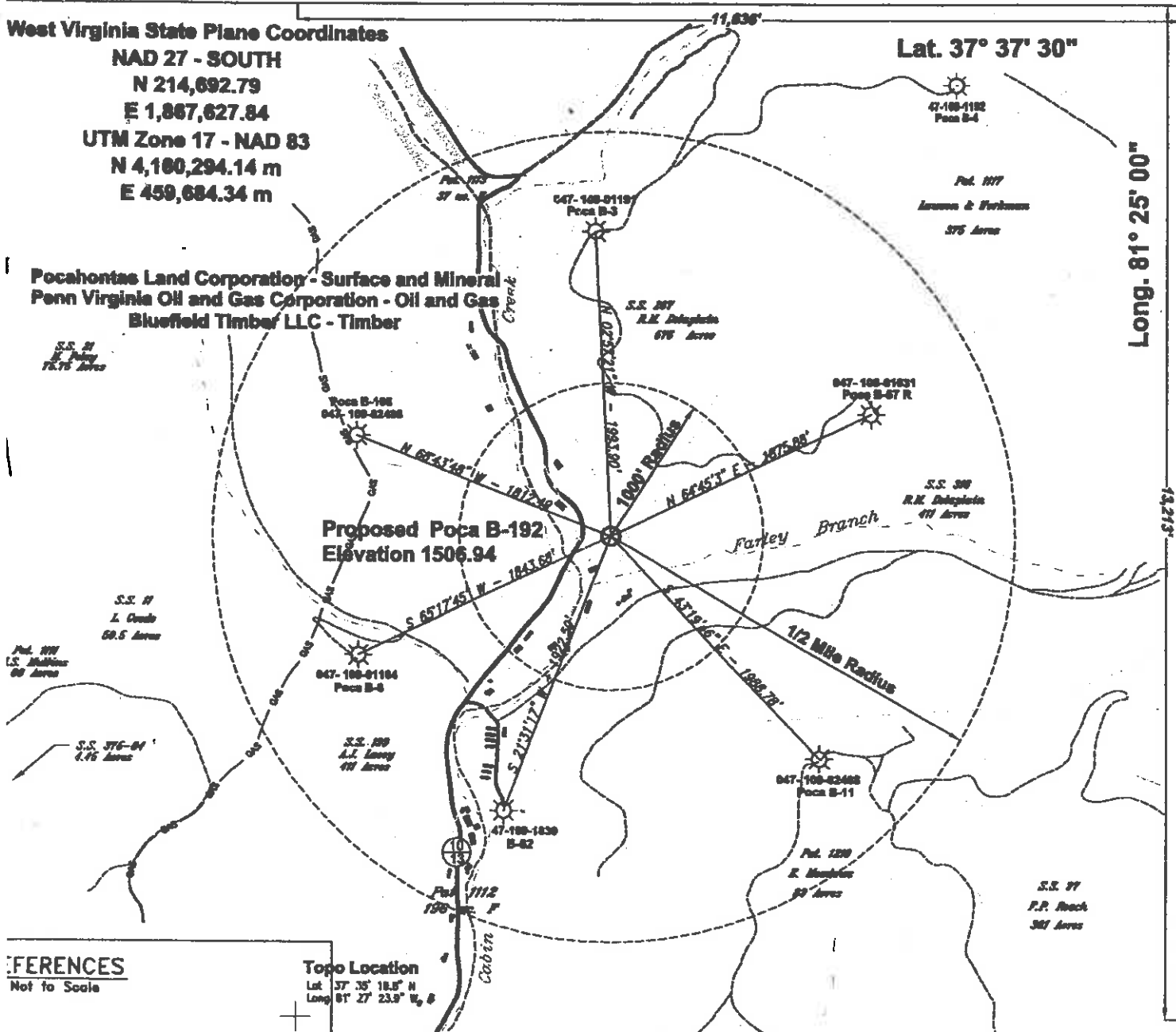
West Virginia State Plane Coordinates

NAD 27 - SOUTH
 N 214,692.79
 E 1,867,627.84
UTM Zone 17 - NAD 83
 N 4,180,294.14 m
 E 459,684.34 m

Lat. 37° 37' 30"

Long. 81° 25' 00"

Pocahontas Land Corporation - Surface and Mineral
Penn Virginia Oil and Gas Corporation - Oil and Gas
Bluefield Timber LLC - Timber



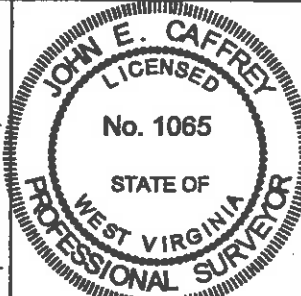
Topo Location
 Lat 37° 35' 18.5" N
 Long 81° 27' 23.9" W, S

Notes:
 No Dwellings exist within 200 feet of Poca B-192
 No Domestic Wells within 1000' of Gas Well Poca B-192
 (+) Denotes location of well on USGS map.
 Property Information taken from Wyoming Co. Tax Records
Pocahontas Land Corporation Tract Lines



No. CABOT OIL AND GAS 2007
 FACTORY C:\CABOT2007\B-192
 DRAWING NAME PlatB-192v2.dwg
 SCALE 1" = 1000'
 NUMERICAL DEGREE OF
 ACCURACY 1 : 2500
 DATA SOURCE OF
 SURVEY GPS GLOBAL POSITIONING
SYSTEM (Sub meter accuracy)

I THE UNDERSIGNED, HEREBY CERTIFY THAT
 THIS PLAT IS CORRECT TO THE BEST OF MY
 KNOWLEDGE AND BELIEF AND SHOWS ALL THE
 INFORMATION REQUIRED BY LAW AND THE REGU-
 LATIONS ISSUED AND PRESCRIBED BY THE
 DEPARTMENT OF MINES.
 (SIGNED) R.P.S. 1065



STATE OF WEST VIRGINIA
DEPARTMENT OF ENVIRONMENTAL PROTECTION
OFFICE OF OIL AND GAS
CHARLESTON, WV

DATE MAY 22, 2007
 OPERATOR'S WELL No. POCA B-192
47 - 109 - 02893
 API WELL No. STATE COUNTY PERMIT

WELL TYPE: OIL GAS X LIQUID INJECTION WASTE DISPOSAL
 (IF "GAS") PRODUCTION X STORAGE DEEP SHALLOW

LOCATION: ELEVATION 1506.94 WATER SHED FARLEY BRANCH OF CABIN CREEK OF GUYANDOTTE RIVER
 DISTRICT SLAB FORK COUNTY WYOMING
 QUADRANGLE MULLENS, WV

SURFACE OWNER POCAHONTAS LAND CORPORATION ACREAGE 6,525.19 (Tax Map 135, Parcel P/O 136-1)
 JOINTLY OWNER PENN VIRGINIA OIL AND GAS CORPORATION LEASE ACREAGE 22,348

LEASE No. 47-0369

PROPOSED WORK: DRILL X CONVERT DRILL DEEPER REDRILL FRACTURE OR
STIMULATE PLUG OFF OLD FORMATION PERFORATE NEW
FORMATION OTHER PHYSICAL CHANGE IN WELL (SPECIFY)

PLUG AND ABANDON CLEAN OUT AND REPLUG

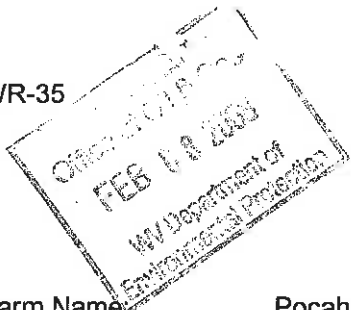
TARGET FORMATION DEVONIAN SHALE ESTIMATED DEPTH 6000 FEET
 WELL OPERATOR CABOT OIL & GAS CORP. DESIGNATED AGENT THOMAS S. LIBERATORE
 ADDRESS 900 LEE ST. EAST SUITE 500 ADDRESS 900 LEE ST., EAST SUITE 500
CHARLESTON, WV 25301 CHARLESTON, WV 25301

JUL 13 2007

McGran L.C. (247)

588 OLM DR 9A

WR-35



Date January 2, 2007
API # 47- 109 - 02893

State of West Virginia
Division of Environmental Protection
Section of Oil and Gas
Well Operator's Report of Well Work

Farm Name: Pocahontas Land Corp. Operator Well No.: Pocahontas Land B-192R

LOCATION: Elevation: 1507' Quadrangle: Mullens
District: Slab Fork County: Wyoming
Latitude: 13213' feet South of 37° DEG. 37' MIN. 30" SEC.
Longitude: 11636' feet West of 81° DEG. 25' MIN. 00" SEC.

Company: Cabot Oil & Gas Corporation
900 Lee Street East, Suite 500
Charleston, WV 25301

Agent: Thomas S. Liberatore
Inspector: Barry Stollings
Permit Issued: 7/13/2007
Well Work Commenced: August 30, 2007
Well Work Completed: October 18, 2007
Verbal Plugging: _____
Permission granted on:
Rotary X Cable _____
Total Depth (feet) 3732'
Fresh Water Depths (ft) 345'
Salt Water Depths (ft) 980'
Is coal being mined in area (Y/N)? YES
Coal Depths (ft) 115'-117', 195'-197', 300'-302'

Casing & Tubing Size	Used in Drilling	Left In Well	Cement Fill Up Cu. Ft.
13-3/8"	30'	30'	
9-5/8"	446'	446'	306
7"	979'	979'	310
4-1/2"		3714'	206
2-3/8"		3502'	

OPEN FLOW DATA

Producing Formation GORDON WEIR Pay Zone 3511'-3551'
Depth (ft) 2998'-3008'
Gas: Initial Open Flow TSTM MCF/d Oil: Initial Open Flow 0 Bbl/d
Final Open Flow 900 (COMMINGLED) MCF/d Final Open Flow 0 Bbl/d
Time of open flow between initial and final tests 24 Hours
Static rock pressure 395 psig surface pressure after 16 Hours

Second Producing Formation POCONO Pay Zone 2919'-2929'
Depth (ft) 2919'-2929'
Gas: Initial Open Flow TSTM MCF/d Oil: Initial Open Flow 0 Bbl/d
Final Open Flow 900 (COMMINGLED) MCF/d Final Open Flow 0 Bbl/d
Time of open flow between initial and final tests 24 Hours
Static rock pressure 395 psig surface pressure after 16 Hours

NOTE: ON BACK OF THIS FORM PUT THE FOLLOWING: 1.) DETAILS OF PERFORATED INTERVALS, FRACTURING OR STIMULATING, PHYSICAL CHANGE, ETC. 2.) THE WELL LOG WHICH IS SYSTEMATIC DETAILED GEOLOGICAL RECORD OF ALL FORMATIONS, INCLUDING COAL ENCOUNTERED BY THE WELLBORE

For: CABOT OIL & GAS CORPORATION

By: [Signature] Drilling Superintendent

Date: 2/7/08

FEB 8 2008

WV 0 2893

STAGE	PERFS	ACID 15% HCl	FOAM	SAND (lbs)	NITROGEN (scf)	BDP	ATP	MTP	ISIP
1-GORDON	3511-3551 (40)	252	75Q	76,830	655,000	N/A	1417	1507	1300
2-WEIR	2998-3008 (40)	504	75Q	40,024	332,000	1296	1238	1334	1190
3-POCONO	2919-2929 (40)	500	75Q	40,900	360,000	1478	1479	1590	1525

FORMATION	TOP	BOTTOM	REMARKS
SILT / SHALE	SURFACE	115	
COAL	115	117	
SILT / SHALE	117	195	
COAL	195	197	
SILT / SHALE	197	300	
COAL	300	302	
SILT / SHALE	302	980	
RV / SANDSTONE	980	1072	
SILT / SHALE	1072	1101	
AVIS LIMESTONE	1101	1159	
SILT / SHALE	1159	1693	
MAXTON	1693	2038	
SHALE	2038	2080	
LITTLE LIME	2080	2225	
PENCIL CAVE	2225	2310	
BIG LIME	2310	2656	
POCONO	2656	2900	
SHALE	2900	2995	
WEIR	2995	3009	
SHALE	3009	3382	
BEREA	3382	3401	
SILT / SHALE	3401	3509	
GORDON	3509	3553	
SILT / SHALE	3553	3732	TD

FEB 29 2008