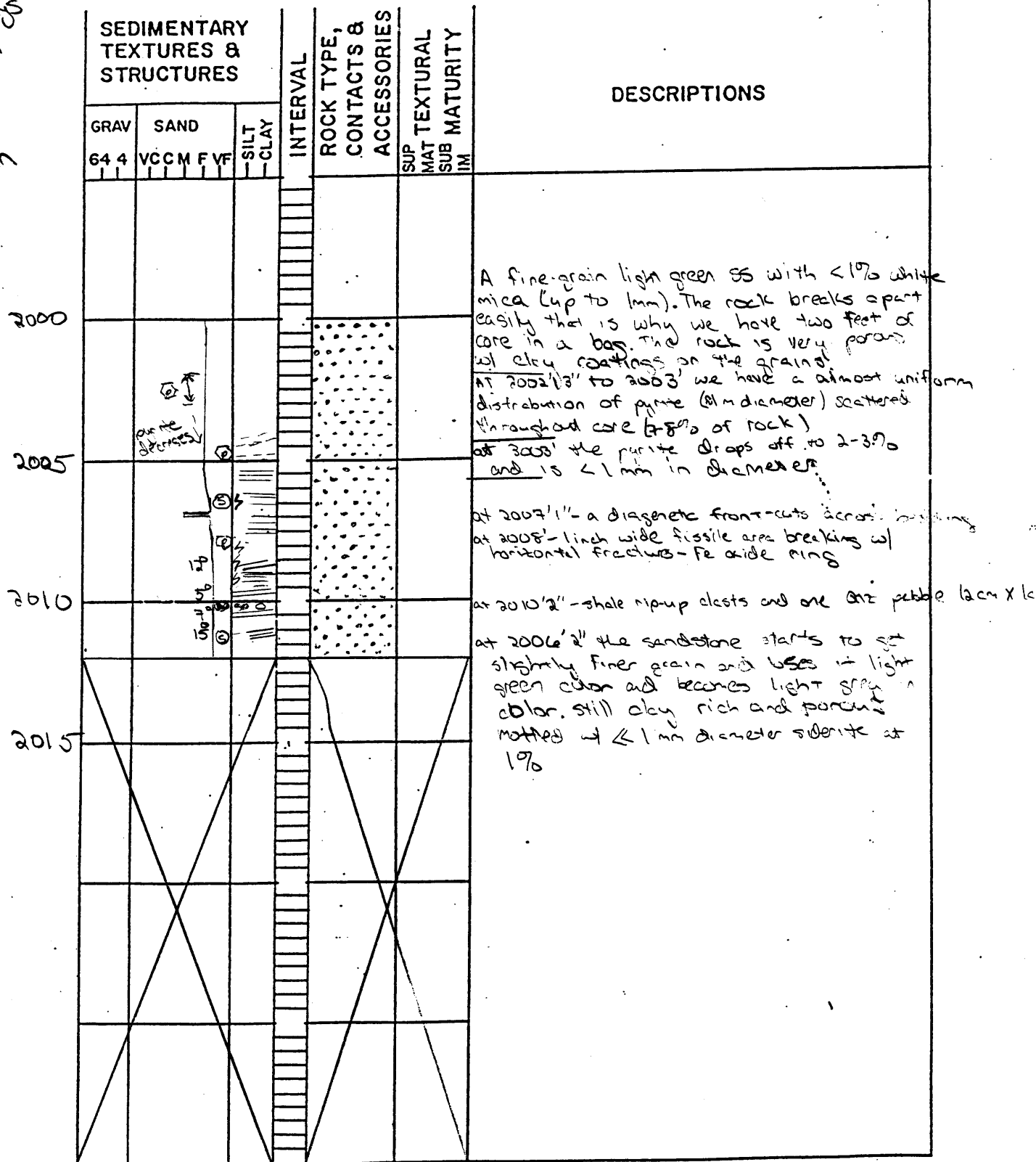


MEASURED SECTION NO. RR Lockhart DATE 9/17/91  
 LOCALITY Clay 1726 STRATIGRAPHIC UNIT Big Injun  
 SETTING Grading CK field MEASURED BY Ana Valgo

the box says  
 Big Injun  
 clay and  
 the fight  
 of Injun



- ⊙ - siderite nodules
- ⊕ - pyrite w/ iron staining
- ≡ - horizontal bedding
- 15° ≡ - cross-bedding w/ 15 degree dip
- == - faint lamination
- ⬢ - shale rip-up clasts
- - one pebble
- ↔ - weakly bioturbated