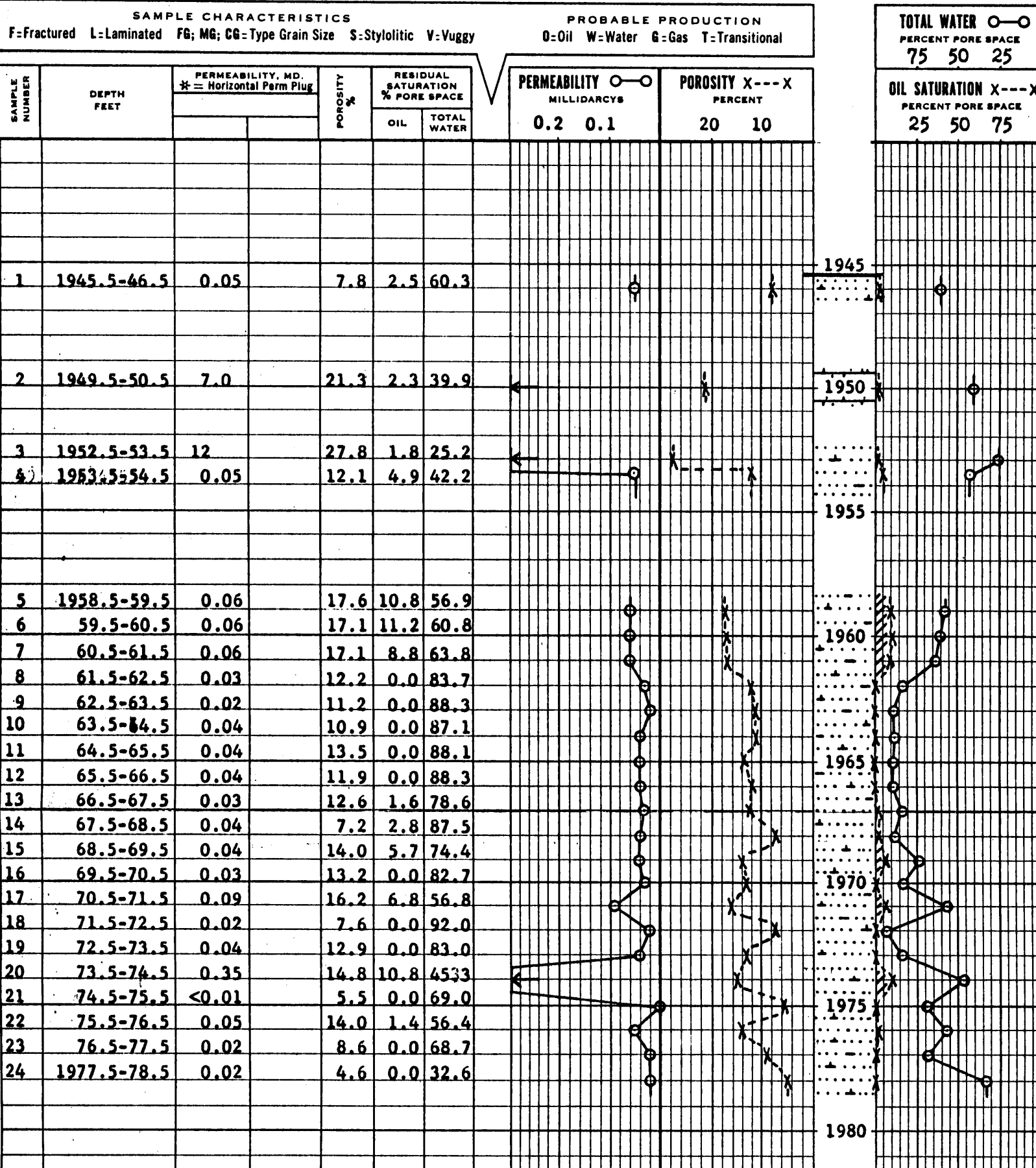


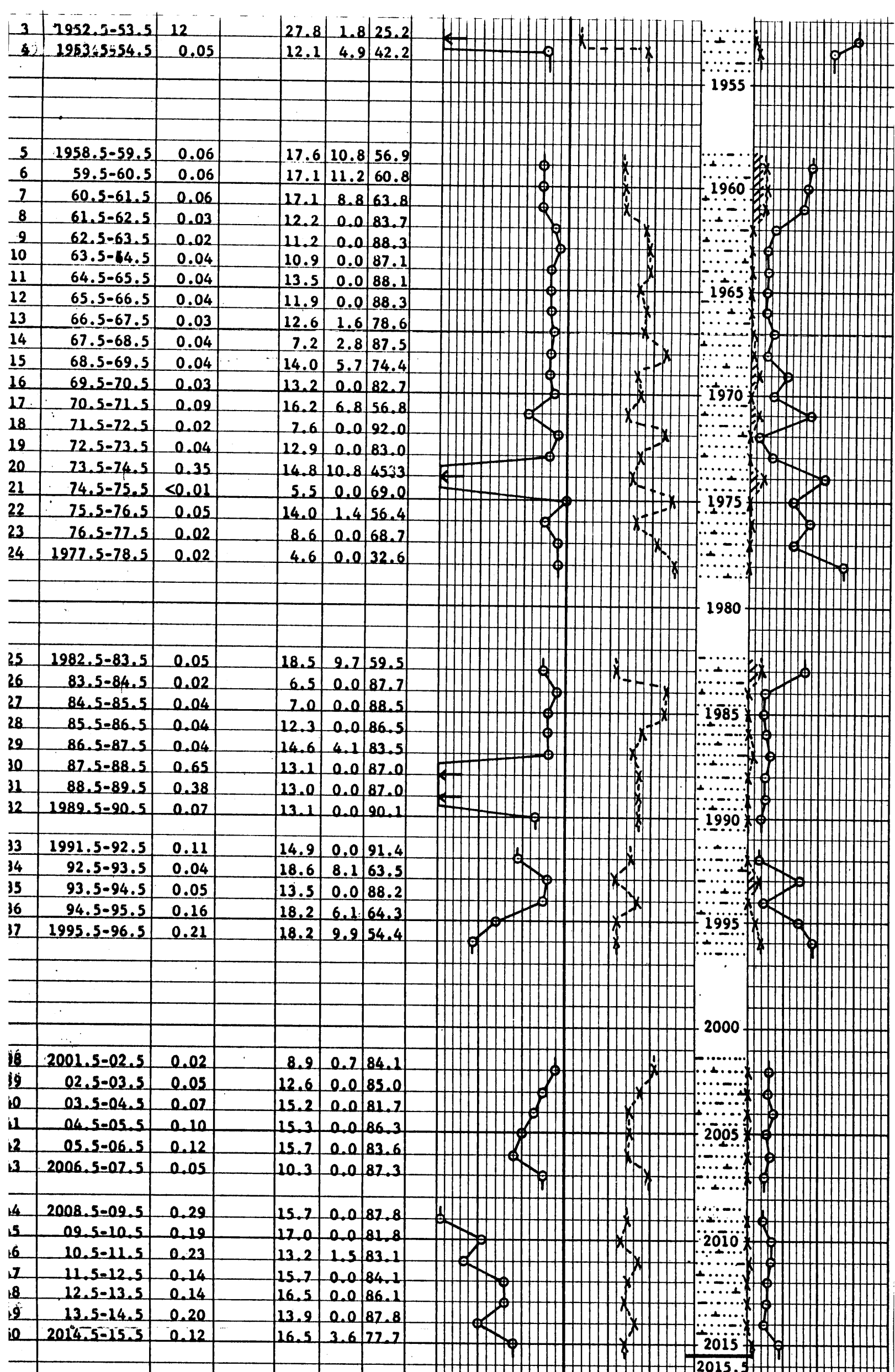
COMPANY PENNZOIL COMPANY FILE NO. SCAL-64281  
 WELL L. S. GOFF NO. W-15 DATE 9-14-64 ENGRS. BS  
 FIELD SPENCER FORMATION BIG INJUN ELEV. \_\_\_\_\_  
 COUNTY ROANE STATE W. VIRGINIA DRLG. FLD. WATER BASE MUD CORES DIAMOND  
 LOCATION \_\_\_\_\_ REMARKS \_\_\_\_\_

# COMPLETION COREGRAPH

These analyses, opinions or interpretations are based on observations and material supplied by the client to whom, and for whose exclusive and confidential use, this report is made. The interpretations or opinions expressed represent the best judgment of Core Laboratories, Inc. (all errors and omissions excepted); but Core Laboratories, Inc. and its officers and employees, assume no responsibility and make no warranty or representations as to the productivity, proper operation, or profitability of any oil, gas or other mineral well or sand in connection with which such report is used or relied upon.

SAND LIMESTONE CONGLOMERATE CHERT ANHYDRITE   
 SHALE DOLOMITE OOLITES





3	1952.5-53.5	12	27.8	1.8	25.2
4	1953.5-54.5	0.05	12.1	4.9	42.2
5	1958.5-59.5	0.06	17.6	10.8	56.9
6	59.5-60.5	0.06	17.1	11.2	60.8
7	60.5-61.5	0.06	17.1	8.8	63.8
8	61.5-62.5	0.03	12.2	0.0	83.7
9	62.5-63.5	0.02	11.2	0.0	88.3
10	63.5-64.5	0.04	10.9	0.0	87.1
11	64.5-65.5	0.04	13.5	0.0	88.1
12	65.5-66.5	0.04	11.9	0.0	88.3
13	66.5-67.5	0.03	12.6	1.6	78.6
14	67.5-68.5	0.04	7.2	2.8	87.5
15	68.5-69.5	0.04	14.0	5.7	74.4
16	69.5-70.5	0.03	13.2	0.0	82.7
17	70.5-71.5	0.09	16.2	6.8	56.8
18	71.5-72.5	0.02	7.6	0.0	92.0
19	72.5-73.5	0.04	12.9	0.0	83.0
20	73.5-74.5	0.35	14.8	10.8	45.3
21	74.5-75.5	<0.01	5.5	0.0	69.0
22	75.5-76.5	0.05	14.0	1.4	56.4
23	76.5-77.5	0.02	8.6	0.0	68.7
24	1977.5-78.5	0.02	4.6	0.0	32.6
25	1982.5-83.5	0.05	18.5	9.7	59.5
26	83.5-84.5	0.02	6.5	0.0	87.7
27	84.5-85.5	0.04	7.0	0.0	88.5
28	85.5-86.5	0.04	12.3	0.0	86.5
29	86.5-87.5	0.04	14.6	4.1	83.5
30	87.5-88.5	0.65	13.1	0.0	87.0
31	88.5-89.5	0.38	13.0	0.0	87.0
32	1989.5-90.5	0.07	13.1	0.0	90.1
33	1991.5-92.5	0.11	14.9	0.0	91.4
34	92.5-93.5	0.04	18.6	8.1	63.5
35	93.5-94.5	0.05	13.5	0.0	88.2
36	94.5-95.5	0.16	18.2	6.1	64.3
37	1995.5-96.5	0.21	18.2	9.9	54.4
38	2001.5-02.5	0.02	8.9	0.7	84.1
39	02.5-03.5	0.05	12.6	0.0	85.0
40	03.5-04.5	0.07	15.2	0.0	81.7
41	04.5-05.5	0.10	15.3	0.0	86.3
42	05.5-06.5	0.12	15.7	0.0	83.6
43	2006.5-07.5	0.05	10.3	0.0	87.3
44	2008.5-09.5	0.29	15.7	0.0	87.8
45	09.5-10.5	0.19	17.0	0.0	81.8
46	10.5-11.5	0.23	13.2	1.5	83.1
47	11.5-12.5	0.14	15.7	0.0	84.1
48	12.5-13.5	0.14	16.5	0.0	86.1
49	13.5-14.5	0.20	13.9	0.0	87.8
50	2014.5-15.5	0.12	16.5	3.6	77.7

AVERAGE GRAIN DENSITY OF PRODUCTIVE SAND - 2.69