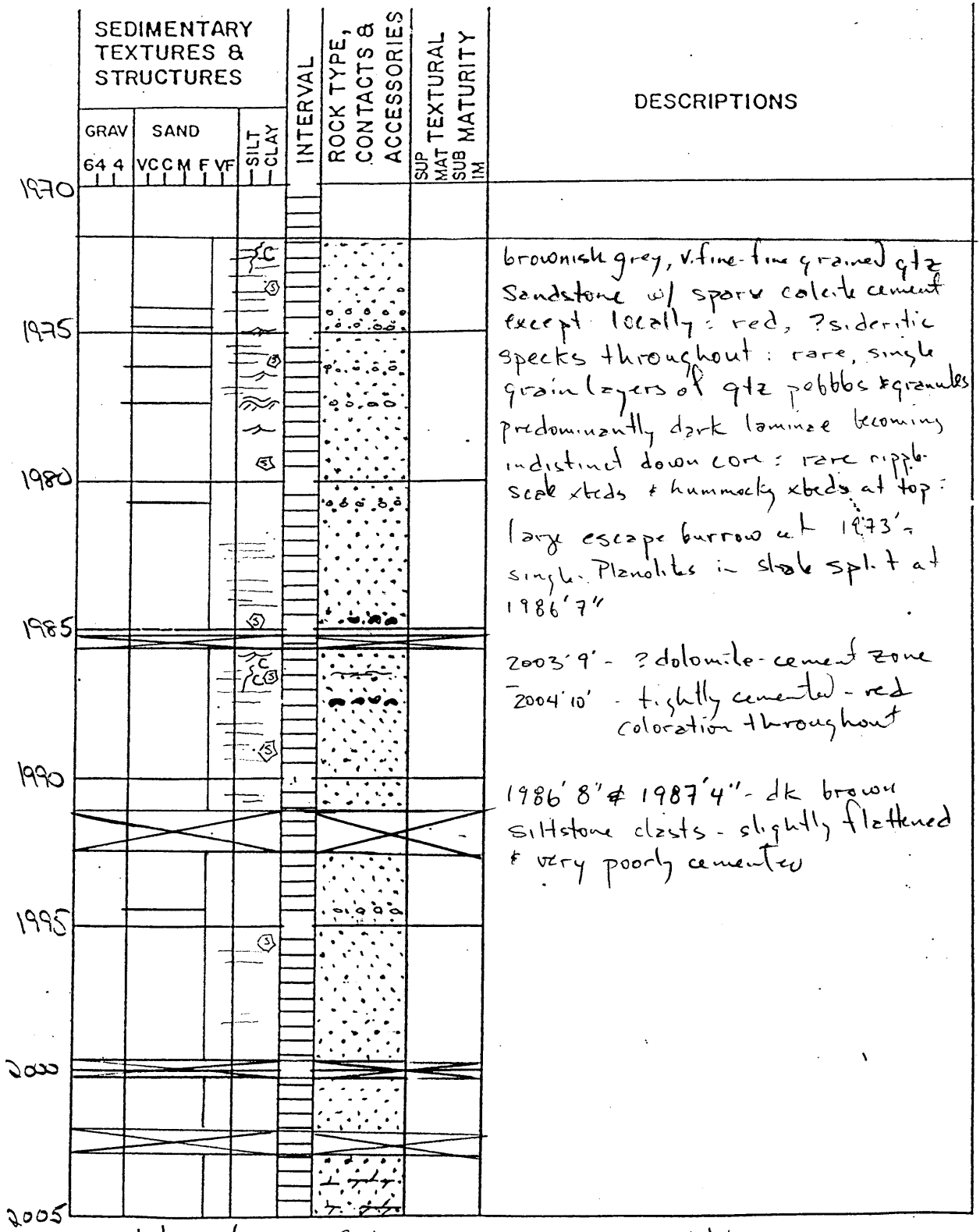


MEASURED SECTION NO. 87-1775  
 LOCALITY J. Donahoe #17  
 SETTING Rock Creek Field

DATE 1/27/92  
 STRATIGRAPHIC UNIT Bigs Injun  
 MEASURED BY RM & AJ



brownish grey, v. fine-fine grained qtz sandstone w/ sparse calcite cement except locally: red, ? sideritic specks throughout: rare, single grain layers of qtz pebbles & granules predominantly dark laminae becoming indistinct down core: rare ripple-scale xbeds & hummocky xbeds at top: large escape burrow at 1973' single. Plazolites in shale spl. t at 1986'7"

2003'9' - ? dolomite-cement zone  
 2004'10' - tightly cemented - red coloration throughout

1986'8" & 1987'4" - dk brown siltstone clasts - slightly flattened & very poorly cemented

c - calcite cement  
 ⊕ - siderite  
 P - pyrite  
 S - burrow  
 ● - siltstone shale clasts  
 ——— horizontal laminae  
 ~~~~~ hummocky xbeds  
 ~~~~~ ripple-scale xbeds

88  
of 1

MEASURED SECTION NO. 87-1775  
 LOCALITY J. Donahoe #17  
 SETTING Rox Creek field

DATE 1/27/93  
 STRATIGRAPHIC UNIT Big Ingha  
 MEASURED BY RM & AV

| Interval | SEDIMENTARY TEXTURES & STRUCTURES |          |           | ROCK TYPE, CONTACTS & ACCESSORIES | TEXTURAL MATURITY | DESCRIPTIONS  |
|----------|-----------------------------------|----------|-----------|-----------------------------------|-------------------|---|
|          | GRAV                              | SAND     | SILT CLAY |                                   |                   |   |
|          | 64 4                              | VCCM FVF | SILT CLAY |                                   |                   |   |
| 2005     |                                   |          |           |                                   |                   | <p>A light green (when wet) fine-grain sandstone. The rock is very porous (soaks the water up) and is speckled with Fe-colored staining (&lt; 1%). The diameter of the Fe-color dots are less than .3 mm. A few white micas scattered in sandstone (&lt;&lt; 1%). Very weakly cemented w/ calcite cement, a pop here and there.</p> |
| 2010     |                                   |          |           |                                   |                   | <p>A few white micas scattered in sandstone (&lt;&lt; 1%). Very weakly cemented w/ calcite cement, a pop here and there.</p>  |
| 2015     |                                   |          |           |                                   |                   | <p>A DARK grey horizontal laminated shale (just slabbed) with brown mica (~.5mm) on horizontal surface</p>  |
|          |                                   |          |           |                                   |                   |   |
|          |                                   |          |           |                                   |                   |   |
|          |                                   |          |           |                                   |                   |   |
|          |                                   |          |           |                                   |                   |   |
|          |                                   |          |           |                                   |                   |   |
|          |                                   |          |           |                                   |                   |   |

WC - weak calcite cement  
 ≡ - horizontal lamination  
 ooo - quartz pebbles defining layers  
 ⊕