

SCAL, Inc.

SPECIAL CORE ANALYSIS LABORATORIES, INC.

SM Energy Co.

SEM Report

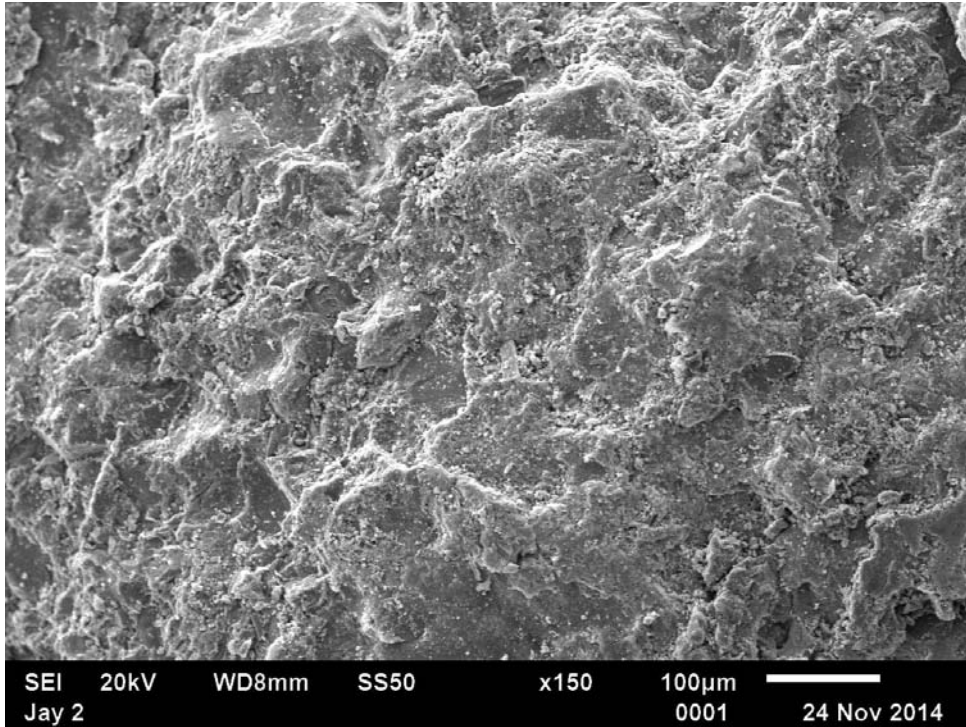
Jay Smith 1

The analysis, interpretations or opinions expressed in our reports represent the best judgement of Special Core Analysis Laboratories Inc.. Special Core Analysis Laboratories Inc. assumes no responsibility and makes no warranties of any kind as to the productivity, proper operation or profitability of any oil, gas or any other mineral in connection which such a report is used or relied upon.

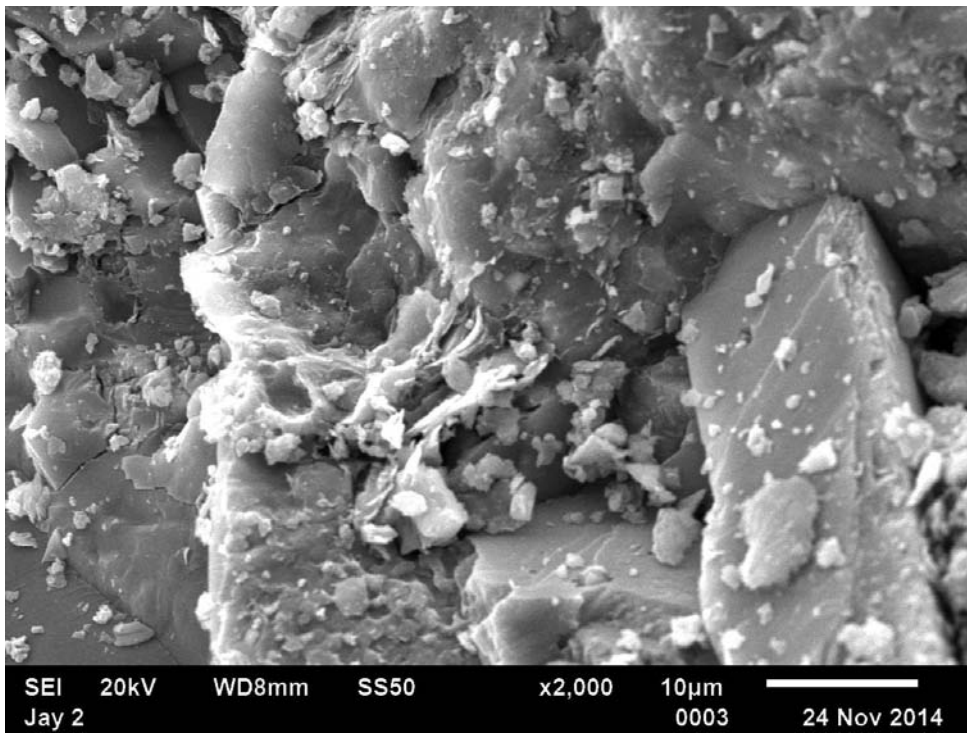
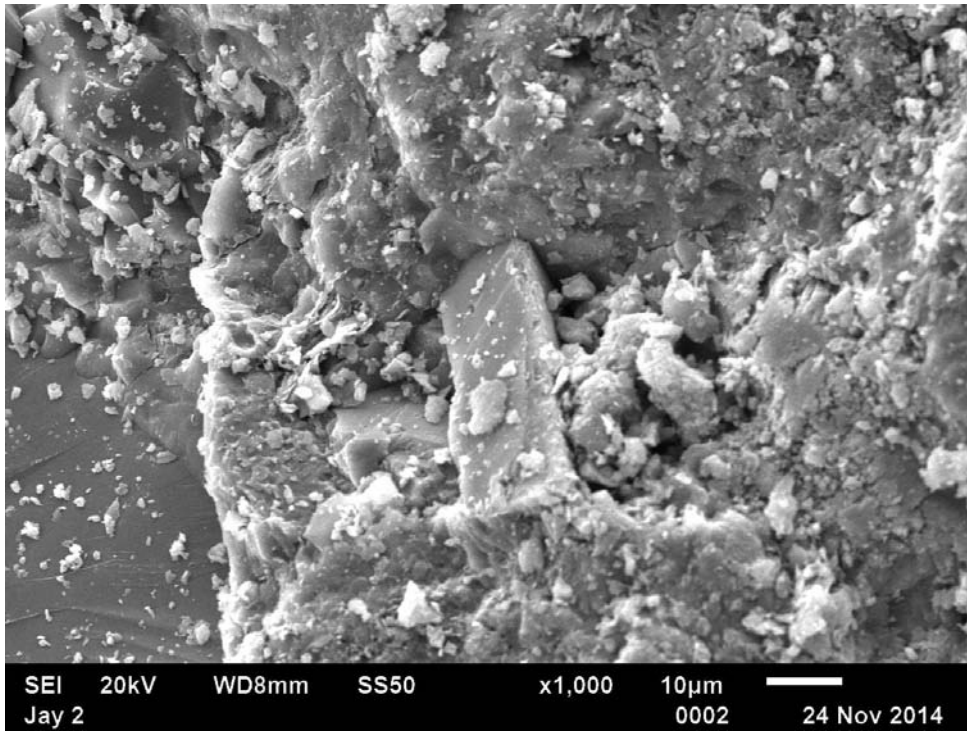
P. O. Box 9730 * Midland, TX 79708-2730 * 1-888-561-5407 * (432)-561-5406 * FAX (432)-561-5339
<http://www.scalinc.com> * mv@scalinc.com

SEM EXAMINATION OF SAMPLE #2 FROM JAY SMITH 1 WELL

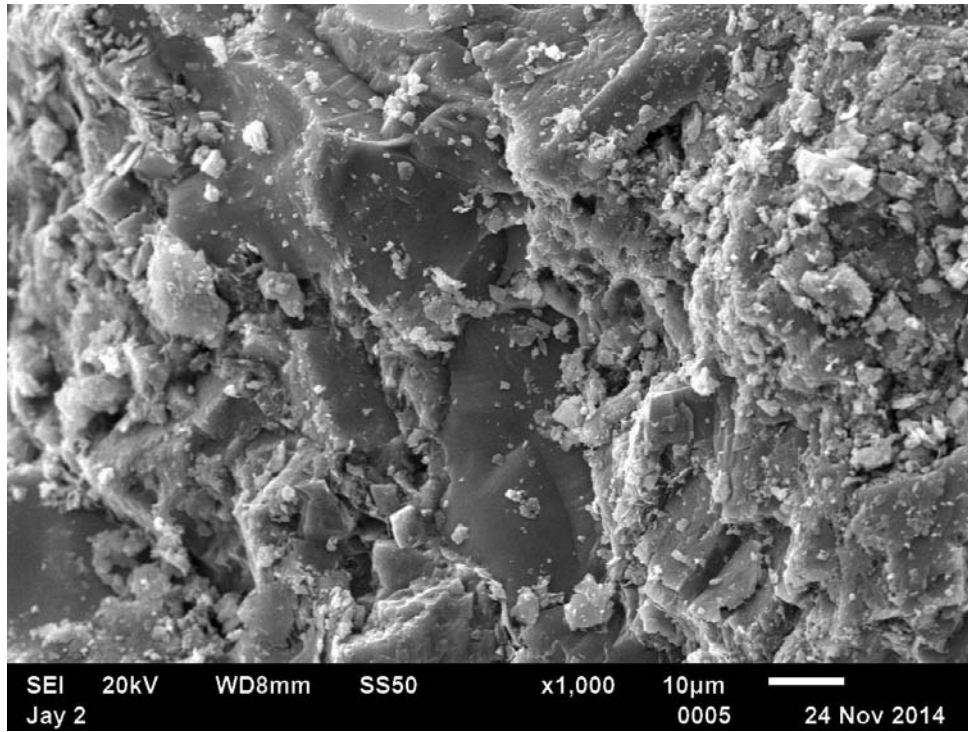
Sandstone is mainly composed of tightly packed fine grains of detrital quartz and feldspars in the size range of 50-150 microns as displayed in Figures 1 and 5.



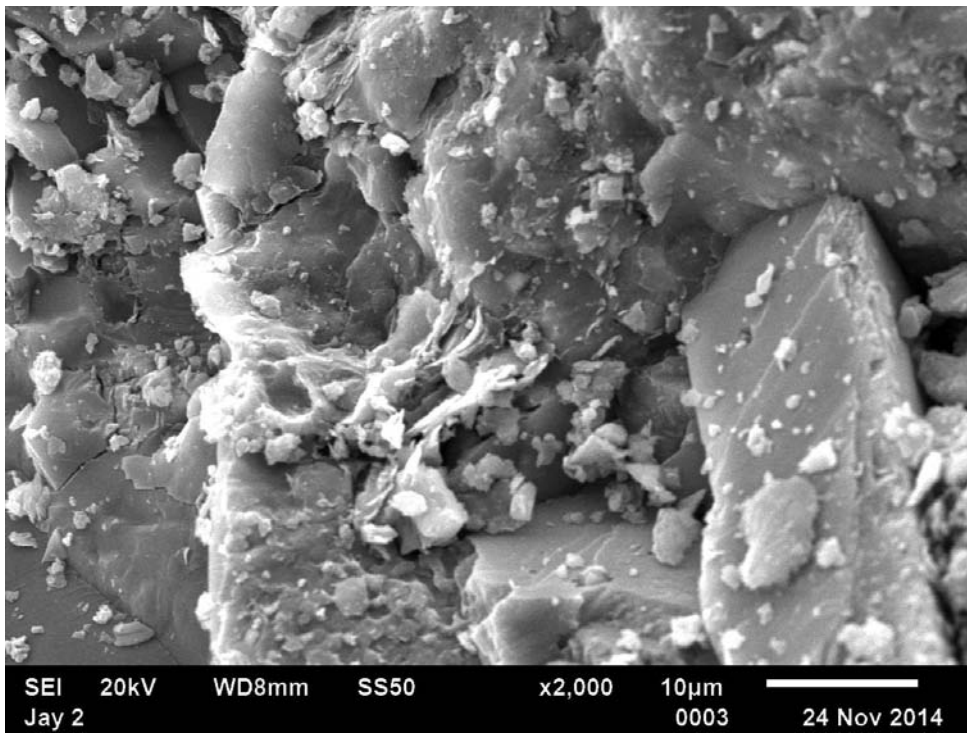
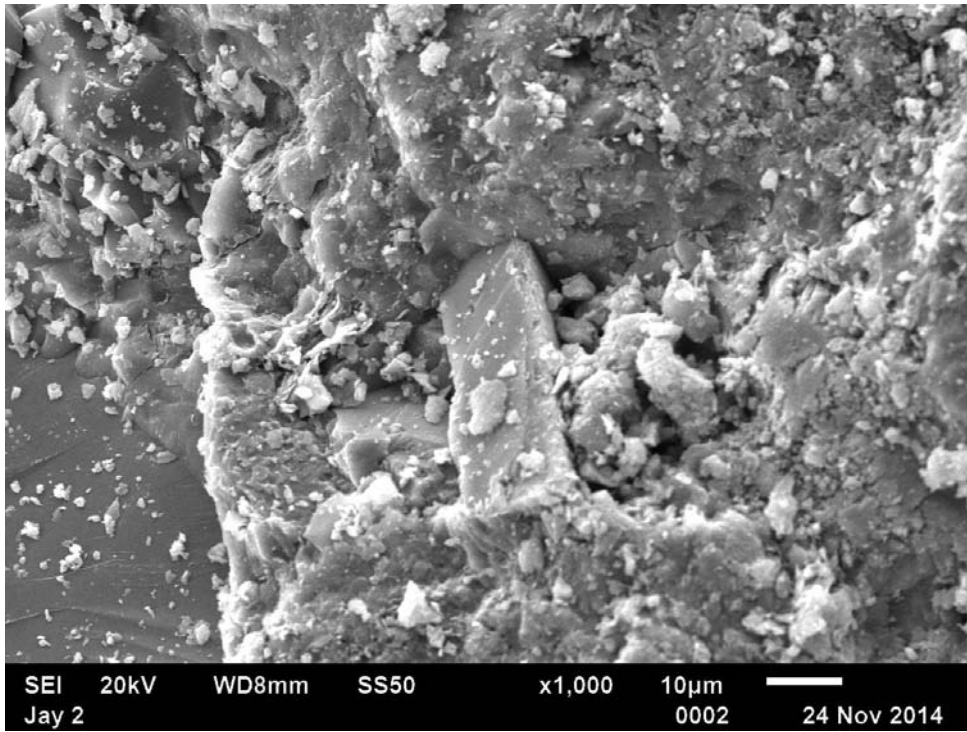
The primary pores are mostly up to 10 microns in size but fairly well filled with fine particles in the size range of about 1-5 microns. Typical such pores are displayed in Figures 2 and 3.



A close view of the pore-filling aggregates of fine-grained cherts are shown in Figure 5.

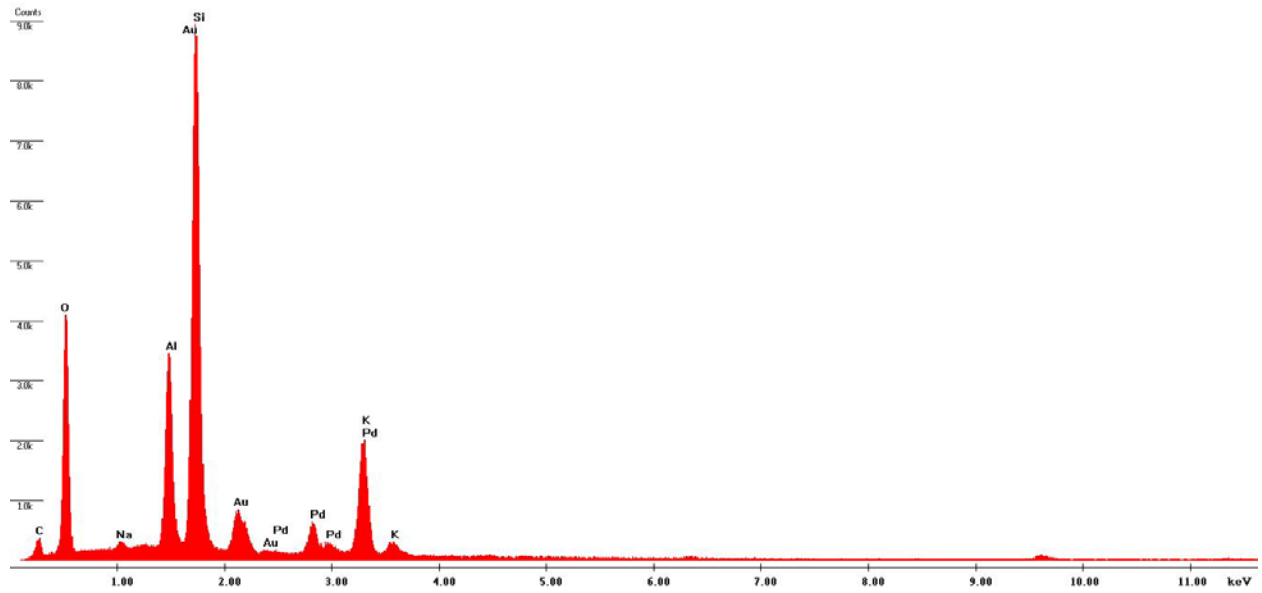


Illite and mica platelets also appear up to 50 microns in size in Figures 2 and 3.

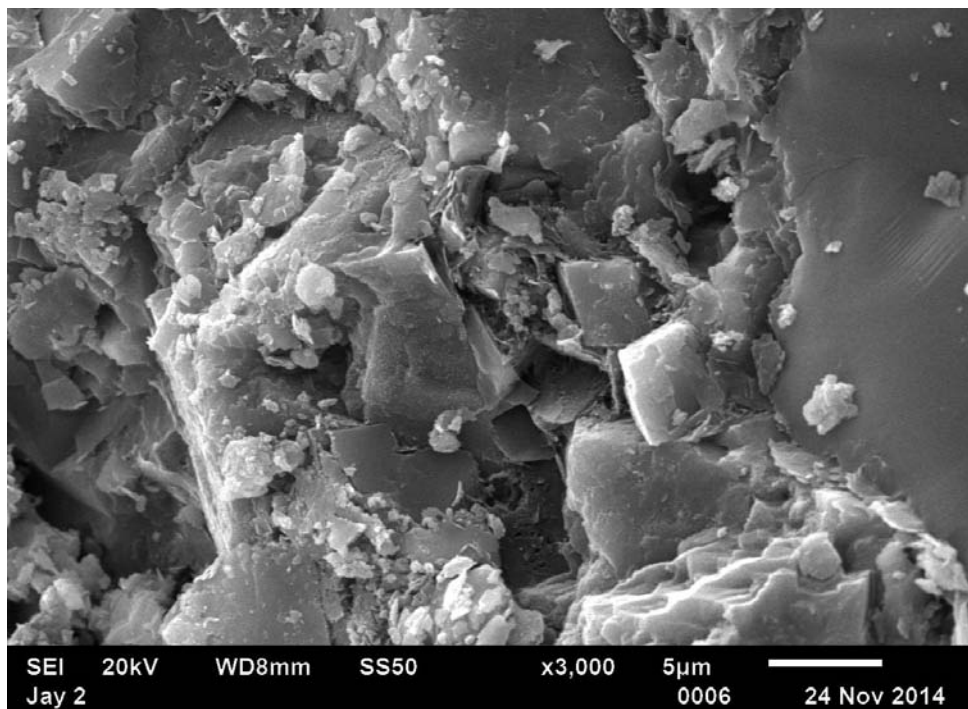


Typical X-ray spectra from the K-felspar are displayed in Figure 3xb.

Label A: Jay 2 3xb



Typical authigenite ankerite rhombs (ferroan dolomite) appear at about 5 microns in size as shown in Figure 6.



X-Ray spectra (EDS) in Figure 6x are obtained from the ankerite rhomb and show strong lines of Mg, Ca, and Fe; the additional Si, Al and K spectra are related to the adjacent K-feldspar.

C:\EDAX\Projects\Güven EDS\EDS 11-24-14\Jay 2 6x.spc

Label A: Jay 2 6x

