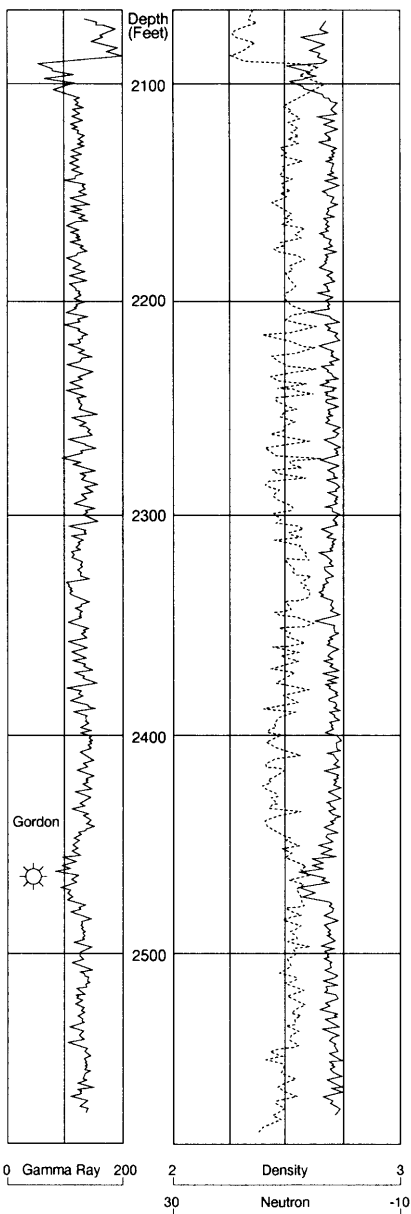


# Wood 1000



**Figure Dvs-27. Type log of productive marine facies of the Gordon (V-4) siltstone, Wood County, West Virginia. These units are located 30 to 50 miles west (seaward) of age-equivalent strike-trending, coarse-grained sandstones believed to mark the paleoshoreline trend. Porosity in the Gordon is probably related to winnowing of shelf sediments during storms. Similar facies produce gas in Kanawha, Raleigh, and McDowell counties in southern West Virginia.**