



# DIVERSIFIED WELL LOGGING

FIVE INCH LOG

5" = 100ft

711 WEST 10TH STREET, RESERVE, LA.

1-800-280-2096

FAX 985-536-2427

COMPANY : EQT Production  
 WELL : Oxford 44 512419  
 FIELD : Doddridge  
 COUNTY : Doddridge  
 STATE : WV

DATE : 8/31/11  
 API : 47-017-05987-01  
 SUPERVISOR : Allen Johnson  
 CREW : Ilan Baime  
 UNIT : DCT-9

### ABBREVIATIONS

CO - Circulated Out  
 CF - Check Flow  
 NB - New Bit  
 SVY - Survey  
 ST - Short Trip  
 CG - Connection Gas  
 LAT - Logged After Trip

### LITHOLOGY

Anhydrite		Gypsum		Salt	
Ash		Limestone		Sand	
Cement		Limestone Sandy		Shale Green	
Chalk		Marl		Shale Grey	
Coal		No sample		Siltstone	
Dolomite					

### MODIFIERS

Anhydritic	
Argillaceous	
Calcareous	
Carbonaceous	
Cherty	
Conglomeratic	
Dolomite Stringer	
Dolomitic	
Fossiliferous	
Marly	
Micaceous	
Pyritic	
Sandy	
Stylolitic	

### SYMBOLS

Core (Recovered)		Fluorescence (Bright)	
Core (Lost)		Fluorescence (Dull)	
Casing Shoe		Fluorescence (Mineral)	
SWC (None)		Gas Show (Fair)	
SWC (Recovered)		Gas Show (Good)	
		Gas Show (Moderate)	
		Gas Show (Poor)	
		Oil Show (Fair)	
		Oil Show (Good)	
		Oil Show (Moderate)	
		Oil Show (Poor)	

ROP / GAMMA	DEPTH	LITH	TOTAL GAS		DESCRIPTIONS
Rate of Penetration 1000 F/H			Gamma 0 CPS 1000	Total Gas 0 UNIT 1000	
			Gas Chromatograph c1 0 PPM 200000		
			Gas Chromatograph c2 0 PPM 200000		
			Gas Chromatograph c3 0 PPM 200000		
			Gas Chromatograph ic4 0 PPM 200000		
			Gas Chromatograph nc4		

BEGIN LOG @ 6115'

WOB 13.5  
ROP 28.9  
PP 1441  
RPM 0

6100

6200

6300

IB

MD 6120' INC 4.7  
AZM 36.6 TVD 5904.9

FMG 7

AJ

SH: LT GRY-GRY, PLTY, BLKY,  
HD, FRM, DULL, RGH, SLI CALC

MD 6216' INC 9.0  
AZM 332.9 TVD 6000.15

FMG 9

SH: LT GRY-GRY, PLTY, BLKY,  
HD, FRM, DULL, RGH, SLI CALC

FMG 15

**MD 6311' INC 15.0**  
**AZM 328.7 TVD 6093.09**

WOB 11.7  
ROP 50.3  
PP 1667  
RPM 36

SH: LT GRY-GRY, PLTY, BLKY,  
HD, FRM, DULL, RGH, SLI CALC

**FMG 9**

6400

**MD 6406' INC 19.0**  
**AZM 327.2 TVD 6184.40**

**FMG 9**

**IB**

SH: LT GRY-GRY, BLKY,  
CHNKY, SLI HD, DULL, GTY, SLI  
SLTY, V SLI CALC

6500

WOB 18.6  
ROP 28.5  
PP 1541

RPM 0

MD 6532' INC 30.8  
AZM 329.8 TVD 6298.82

FMG 7

SH: MD GRY, BLKY, CHNKY,  
PWDR, SLI HD, DULL, GTY,  
SLTY, CALC

6600

FMG 15

MD 6659' INC 41.5  
AZM 330.2 TVD 6400.92

AJ

FMG 22

6700

FMG 50

SH: GY-DGY, BLKY-CHNKY, SLI  
HD, DULL, GTY, SLTY, CALC

WOB 10.5  
ROP 59.1  
PP 1641  
RPM 0

MD 6753' INC 51.7  
AZM 331.1 TVD 6465.94

IB

FMG 33

0089

FMG 113

SH: DK GRY, BLKY, CHNKY, SLI  
HD, SM TXT, TR PYR, CALC

FMG 103

TULLY @ 6852

MD 6848' INC 61.6  
AZM 333.0 TVD 6517.87

HAMILTON @ 6887

0069

LMST: LT GRY, CRM, FLKY,  
BRIT, XCLN

WOB 11.8  
ROP 80  
PP 1882  
RPM 0

FMG 172

MARCELLUS @ 6924

MD 6943' INC 71.3  
AZM 335.4 TVD 6556.09

FMG 190

7000

FMG 420

SH: BLK, PLTY, BLKY, MOD  
FRM, ORG, GTY, TR PYR, V SLI  
CALC

AJ

FMG 470

CHERRY VALLEY @ 7046

MD 7070' INC 82.2  
AZM 335.1 TVD 6585.42

FMG 270

FMG 400

SH: BLK, BLKY-PLTY, SL FRM,  
ORG, GTY, TR PYR, CALC

7100

FMG 330

MD 7141' INC 88.4  
AZM 334.1 TVD 6591.17

WOB 16.8  
ROP 85.7  
PP 1915  
RPM 0

FMG 144

IB

SH: BLK, PLTY, BLKY, MOD  
FRM, RTHY, GTY, SLI SLTY,  
CALC

7200

7300

7400

WOB 15.3  
ROP 167.3  
PP 1749  
RPM 70

FMG 270

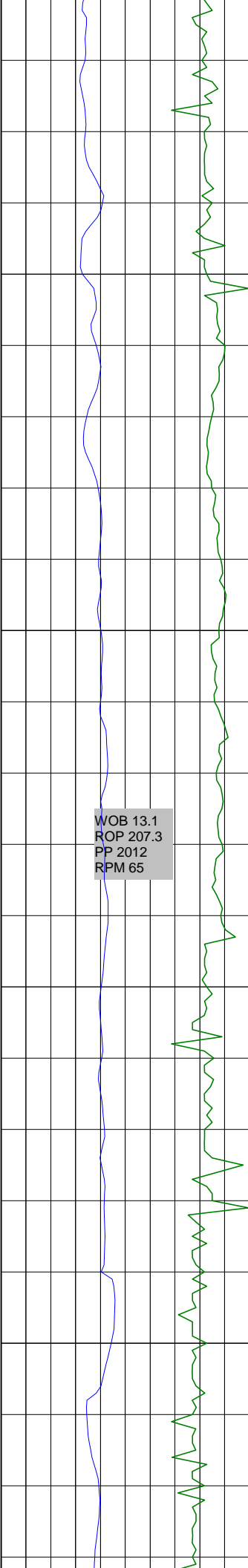
FMG 193

FMG 145

MD 7267' INC 90.8  
AZM 334.8 TVD 6591.39

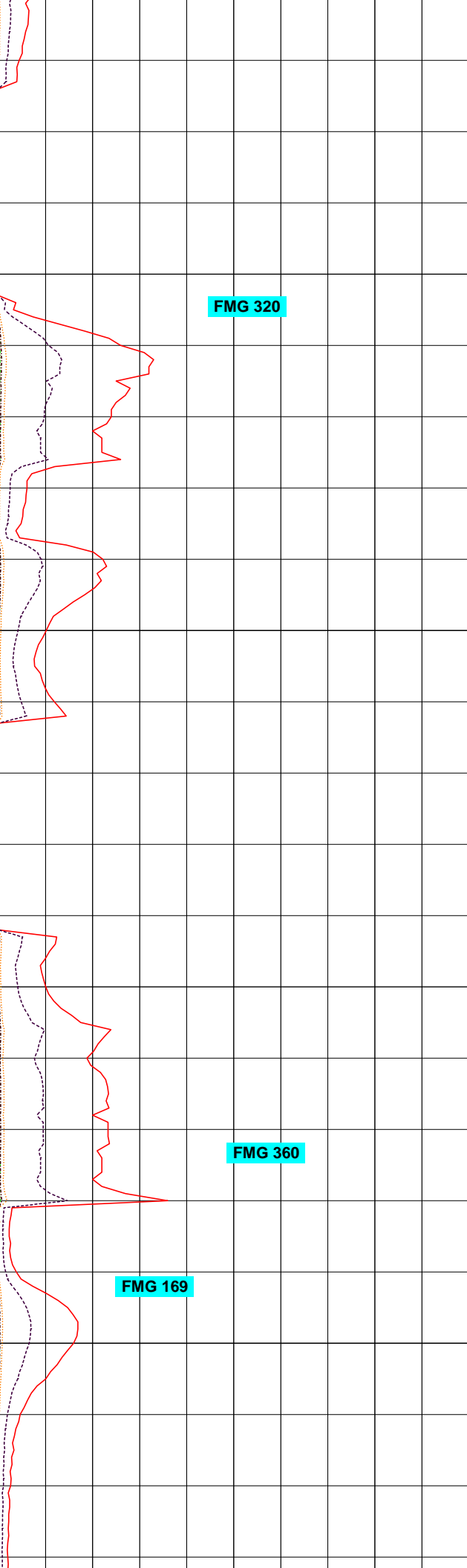
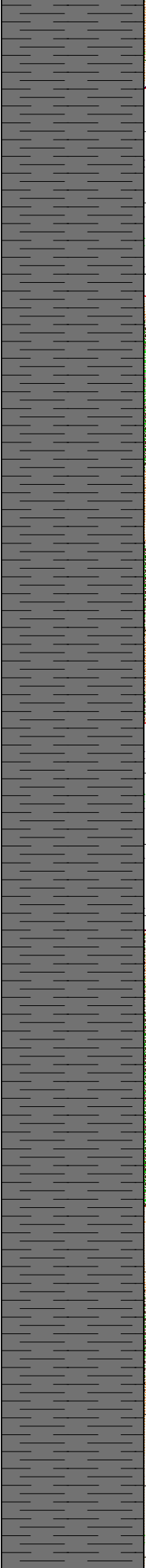
SH: BLK, PLTY, BLKY, MOD  
FRM, RTHY, GTY, SLI SLTY, SLI  
CALC

MD 7394' INC 91.3  
AZM 335.5 TVD 6589.12



7500

7600



FMG 320

SH: BLK, PLTY, BLKY, MOD  
FRM, RTHY, GTY, SLI SLTY, V  
CALC

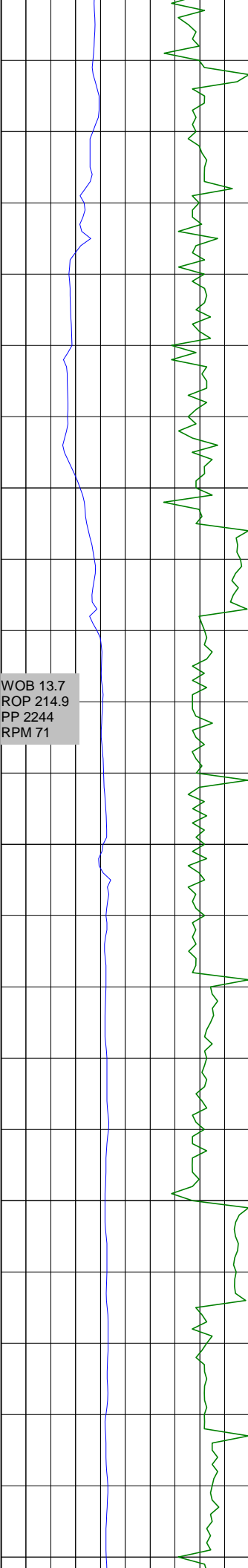
MD 7521' INC 90.6  
AZM 335.5 TVD 6587.40

FMG 360

SH: BLK, PLTY, BLKY, MOD  
FRM, RTHY, GTY, SLI SLTY, V  
CALC

FMG 169





WOB 13.7  
ROP 214.9  
PP 2244  
RPM 71

7700

7800

FMG 190

FMG 360

FMG 280

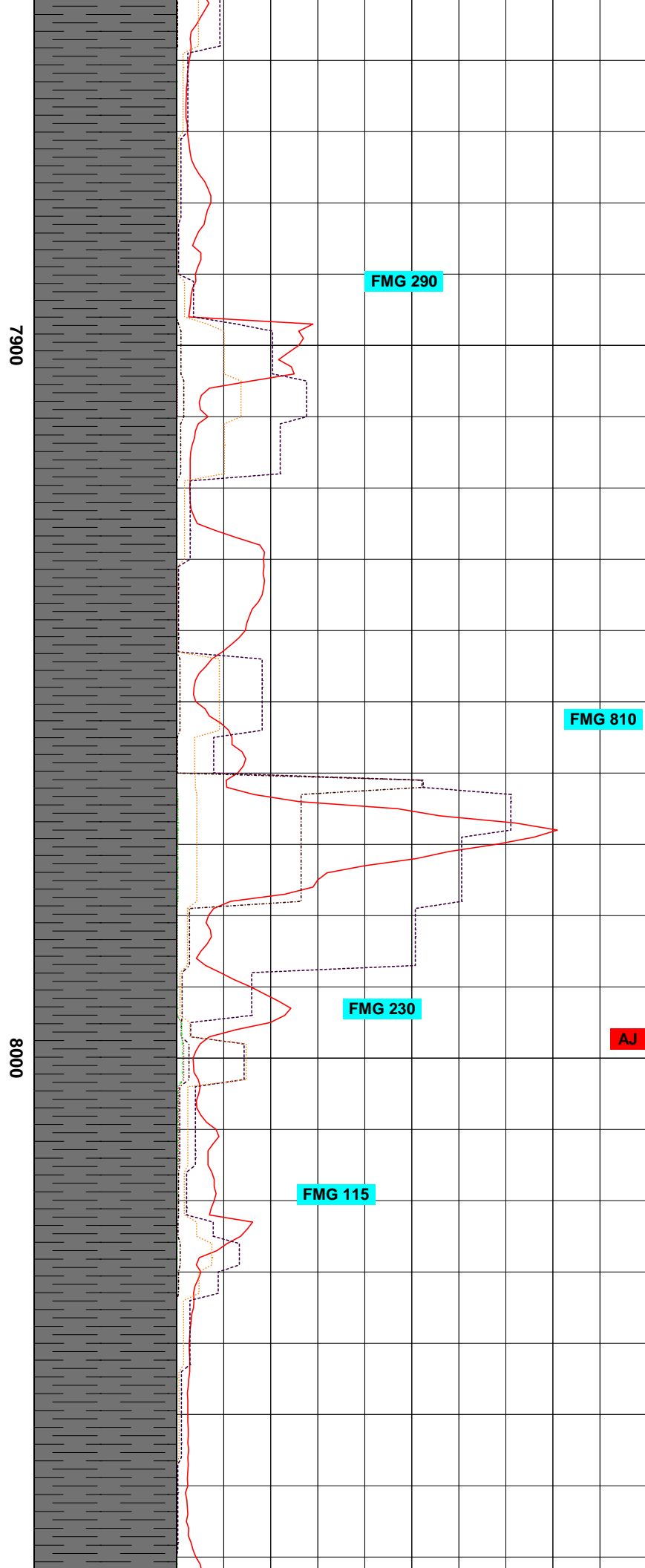
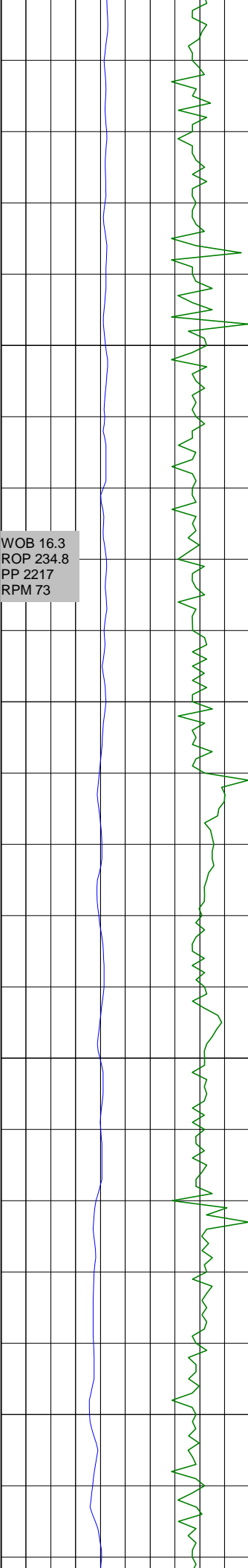
FMG 190

MD 7648' INC 90.8  
AZM 336.4 TVD 6585.85

SH: BLK, PLTY, BLKY, MOD  
FRM, RTHY, GTY, SLI SLTY,  
CALC

MD 7775' INC 89.3  
AZM 337.1 TVD 6586.12

SH: BLK, PLTY, BLKY, MOD  
FRM, RTHY, GTY, TR PYR,  
CALC



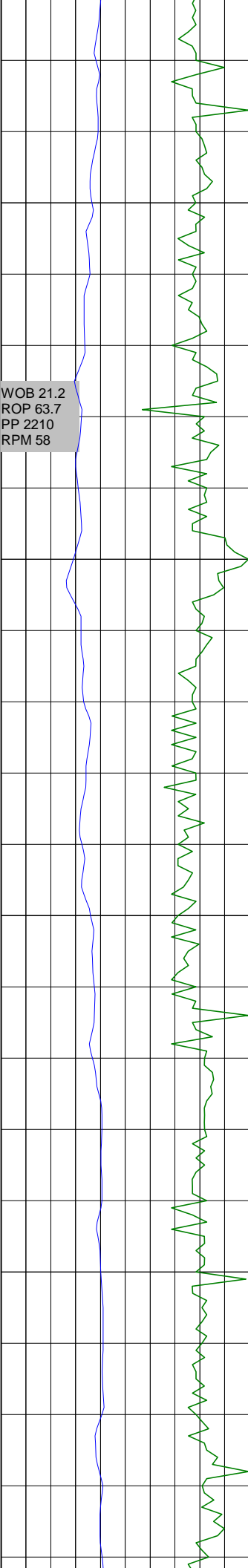
**MD 7902' INC 91.0**  
**AZM 334.3 TVD 6584.97**

SH: BLK, PLTY, BLKY, MOD  
FRM, RTHY, GTY, TR PYR,  
CALC

**MD 8029' INC 90.9**  
**AZM 335.2 TVD 6582.92**

SH: BLK, PLTY, BLKY, MOD  
FRM, RTHY, GTY, TR PYR,  
CALC

AJ



8100

8200

FMG 400

MD 8156' INC 90.5  
AZM 333.6 TVD 6581.15

FMG 270

SH: BLK, PLTY, BLKY, MOD  
FRM, RTHY, GTY, TR PYR,  
CALC

FMG 310

MD 8216' INC 90.2  
AZM 333.6 TVD 6580.76

FMG 226

SH: BLK, PLTY, BLKY, MOD  
FRM, RTHY, GTY, TR PYR,  
CALC

WOB 19.5  
ROP 194  
PP 2325  
RPM 67

8300

**MD 8346' INC 90.3  
AZM 334.0 TVD 6580.04**

**FMG 227**

**FMG 420**

SH: BLK, PLTY, BLKY, MOD  
FRM, RTHY, GTY, TR PYR,  
CALC

**FMG 360**

**FMG 360**

8400

**MD 8409' INC 90.4  
AZM 333.7 TVD 6579.66**

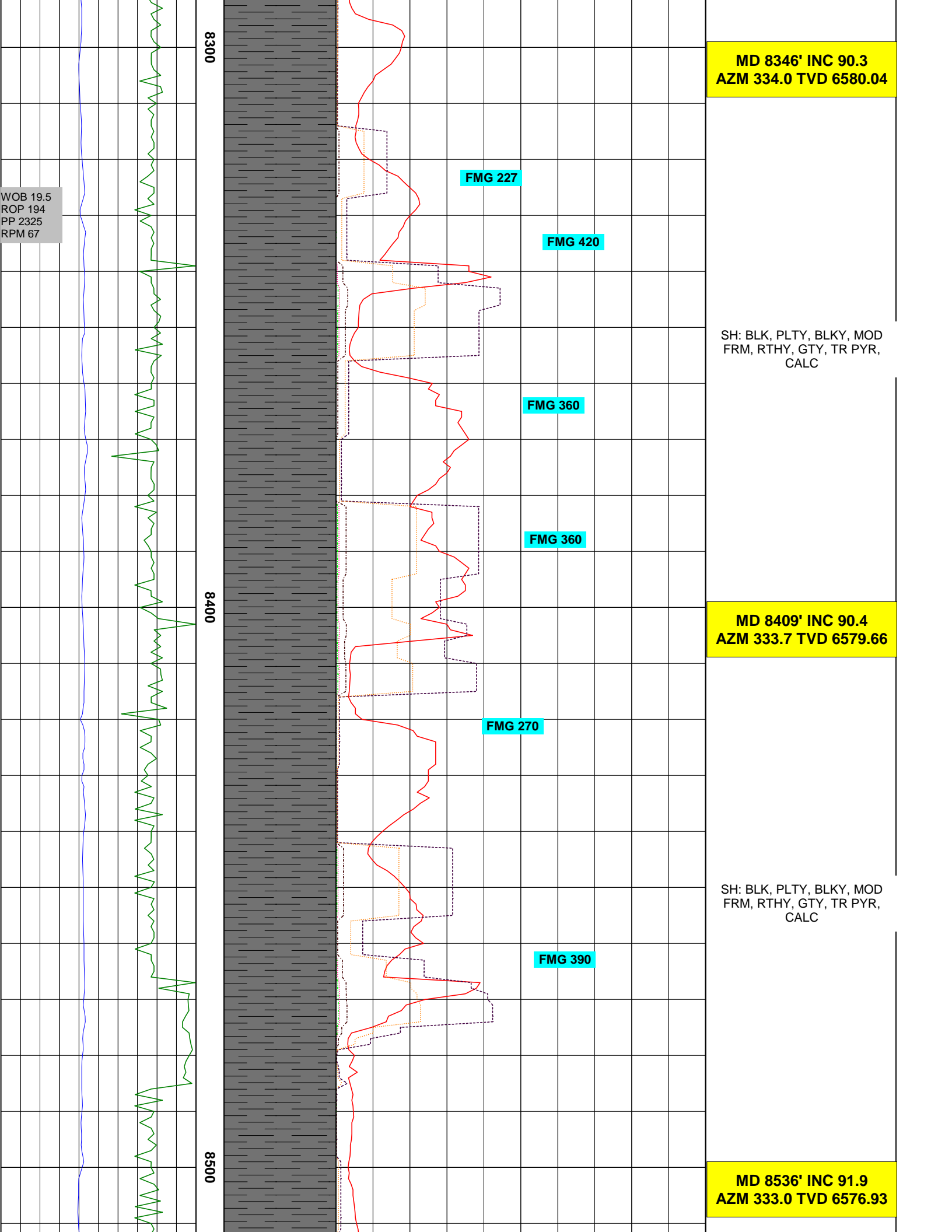
**FMG 270**

**FMG 390**

SH: BLK, PLTY, BLKY, MOD  
FRM, RTHY, GTY, TR PYR,  
CALC

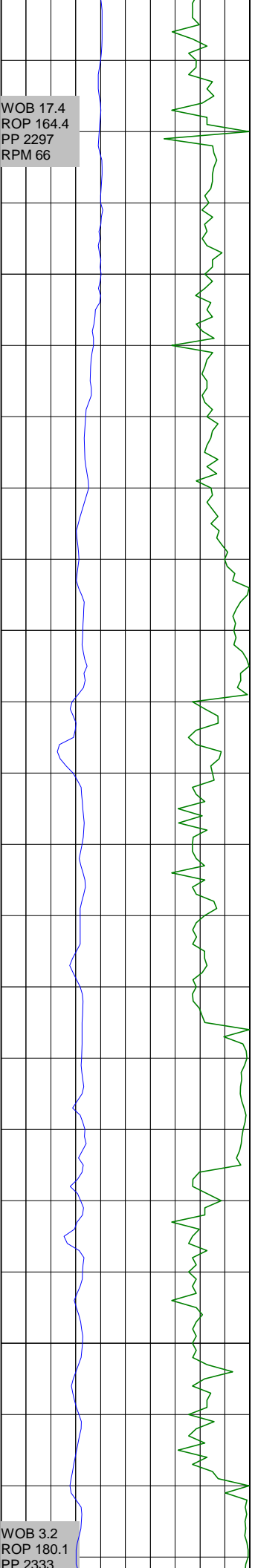
8500

**MD 8536' INC 91.9  
AZM 333.0 TVD 6576.93**



WOB 17.4  
ROP 164.4  
PP 2297  
RPM 66

WOB 3.2  
ROP 180.1  
PP 2333



8600

8700

FMG 145

FMG 470

FMG 209

FMG 390

FMG 62

FMG 52

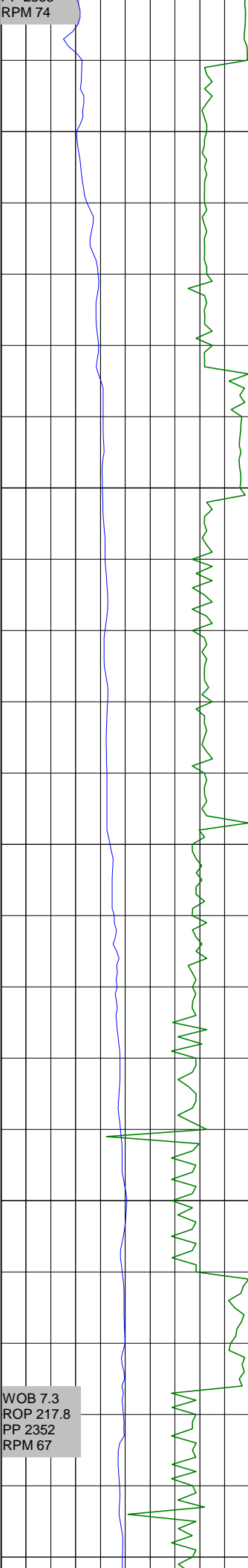
FMG 125

SH: BLK, PLTY, BLKY, MOD  
FRM, RTHY, GTY, TR PYR,  
VCALC; TRC LMSTN

MD 8663' INC 91.0  
AZM 332.5 TVD 6574.33

SH: BLK, PLTY, BLKY, MOD  
FRM, RTHY, GTY, TR PYR,  
VCALC; TRC LMSTN

MD 8726' INC 90.9  
AZM 332.0 TVD 6573.20



8800

8068

FMG 252

FMG 235

FMG 161

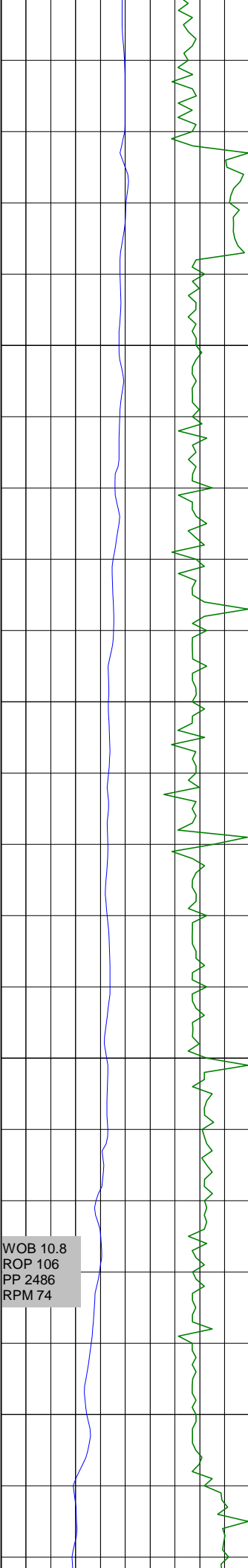
IB

SH: BLK, PLTY, BLKY, MOD FRM, RTHY, GTY, TR PYR, VCALC; TRC LMSTN

MD 8852' INC 89.4  
AZM 334.7 TVD 6573.45

SH: BLK, PLTY, BLKY, MOD FRM, ORG, WXY, GTY, CALC

WOB 7.3  
ROP 217.8  
PP 2352  
RPM 67



9000

9100

WOB 10.8  
ROP 106  
PP 2486  
RPM 74

FMG 250

FMG 260

FMG 480

FMG 610

FMG 360

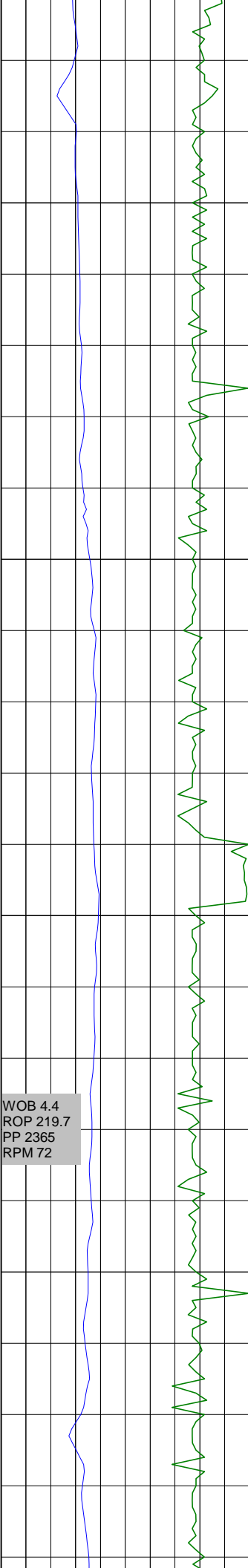
FMG 310

MD 8979' INC 91.7  
AZM 336.4 TVD 6572.30

SH: BLK, PLTY, BLKY, MOD  
FRM, ORG, WXY, GTY, CALC

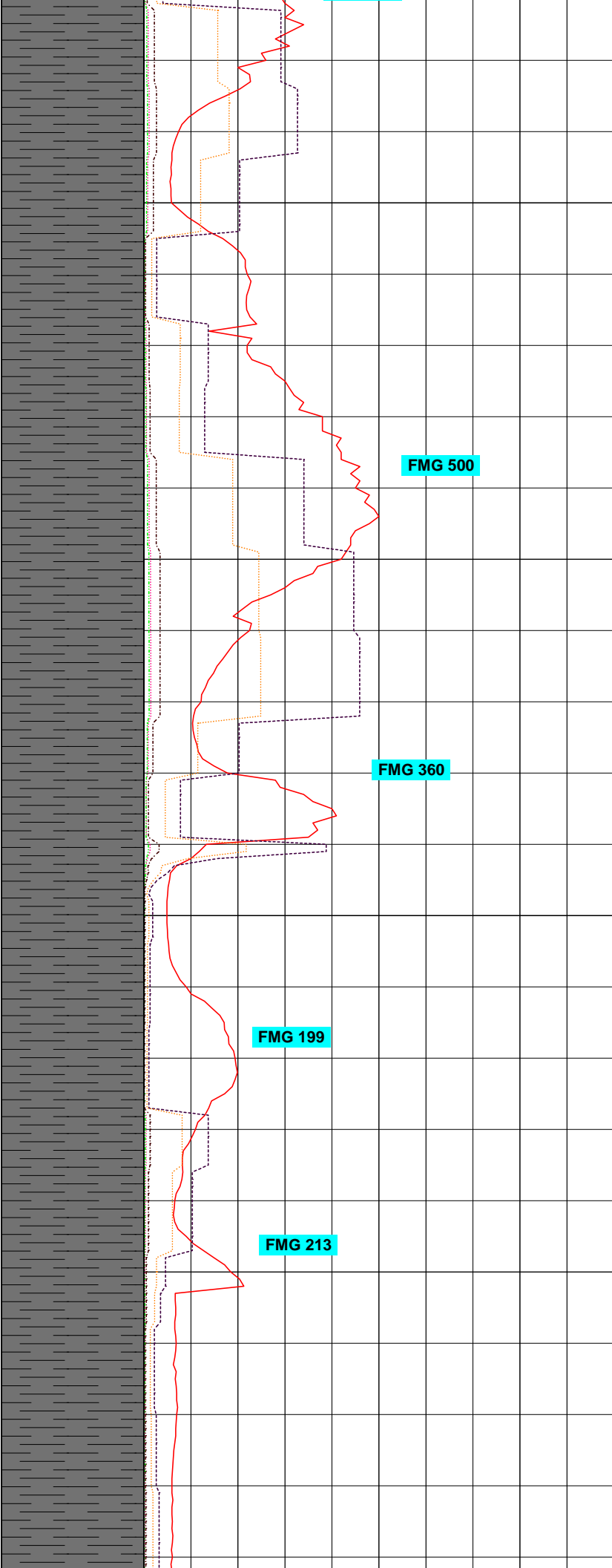
MD 9105' INC 91.7  
AZM 335.9 TVD 6568.34

SH: BLK, PLTY, BLKY, MOD  
FRM, RTHY, GTY, SLI SLTY,  
CALC



9200

9300

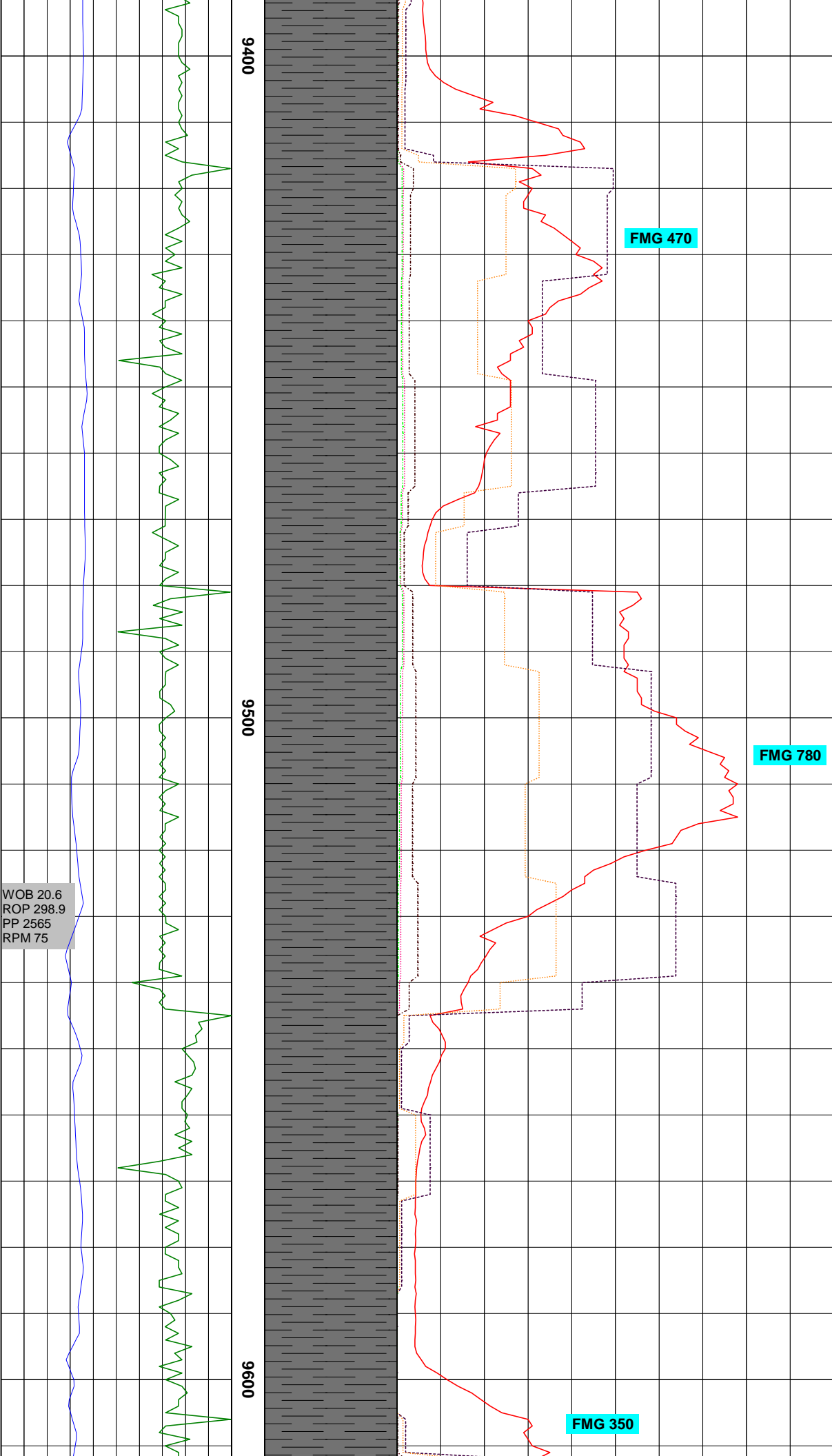


MD 9232' INC 91.7  
AZM 336.5 TVD 6564.57

SH: BLK, PLTY, BLKY, MOD  
FRM, RTHY, GTY, SLI SLTY, V  
CALC

MD 9359' INC 90.3  
AZM 338.3 TVD 6562.81





9400

9500

9600

SH: BLK, PLTY, BLKY, MOD  
FRM, RTHY, GTY, SLI SLTY,  
CALC

**MD 9486' INC 90.3  
AZM 339.5 TVD 6561.70**

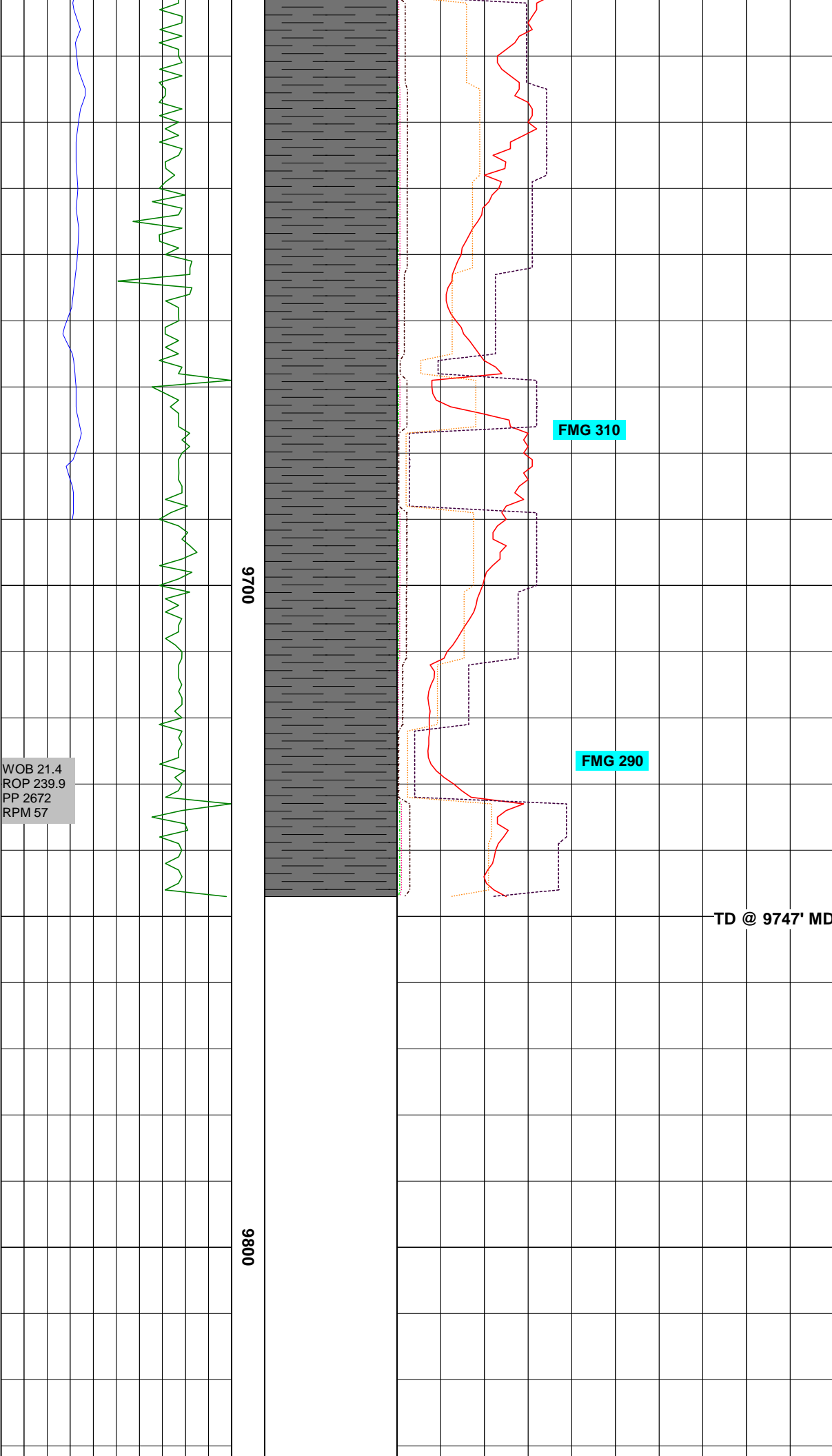
**FMG 470**

**FMG 780**

**FMG 350**

WOB 20.6  
ROP 298.9  
PP 2565  
RPM 75

SH: BLK, PLTY, BLKY, MOD  
FRM, RTHY, GTY, SLI SLTY,  
CALC



SH: BLK, PLTY, BLKY, MOD  
FRM, RTHY, WXY, ORG, SLI  
CALC



# DIVERSIFIED WELL LOGGING

FIVE INCH LOG

5" = 100ft

711 WEST 10TH STREET, RESERVE, LA.

1-800-280-2096

FAX 985-536-2427

COMPANY : EQT Production  
 WELL : Oxford 44 512419  
 FIELD : Doddridge  
 COUNTY : Doddridge  
 STATE : WV

DATE : 8/31/11  
 API : 47-017-05987-01  
 SUPERVISOR : Allen Johnson  
 CREW : Ilan Baime  
 UNIT : DCT-9

### ABBREVIATIONS

CO - Circulated Out  
 CF - Check Flow  
 NB - New Bit  
 SVY - Survey  
 ST - Short Trip  
 CG - Connection Gas  
 LAT - Logged After Trip

### LITHOLOGY

Anhydrite		Gypsum		Salt	
Ash		Limestone		Sand	
Cement		Limestone Sandy		Shale Green	
Chalk		Marl		Shale Grey	
Coal		No sample		Siltstone	
Dolomite					

### MODIFIERS

Anhydritic	
Argillaceous	
Calcareous	
Carbonaceous	
Cherty	
Conglomeratic	
Dolomite Stringer	
Dolomitic	
Fossiliferous	
Marly	
Micaceous	
Pyritic	
Sandy	
Stylolitic	

### SYMBOLS

Core (Recovered)		Fluorescence (Bright)	
Core (Lost)		Fluorescence (Dull)	
Casing Shoe		Fluorescence (Mineral)	
SWC (None)		Gas Show (Fair)	
SWC (Recovered)		Gas Show (Good)	
		Gas Show (Moderate)	
		Gas Show (Poor)	
		Oil Show (Fair)	
		Oil Show (Good)	
		Oil Show (Moderate)	
		Oil Show (Poor)	