



DIVERSIFIED WELL LOGGING

FIVE INCH LOG

5" = 100ft

711 WEST 10TH STREET, RESERVE, LA.

1-800-280-2096

FAX 985-536-2427

COMPANY : EQT Production
 WELL : Oxford 44 513773
 FIELD : Doddridge
 COUNTY : Doddridge
 STATE : WV

DATE : 9/17/11
 API : 47-017-06025
 SUPERVISOR : Allen Johnson
 CREW : Patrick Venturella
 UNIT : DCT-9

ABBREVIATIONS

CO - Circulated Out
 CF - Check Flow
 NB - New Bit
 SVY - Survey
 ST - Short Trip
 CG - Connection Gas
 LAT - Logged After Trip

LITHOLOGY

Anhydrite		Gypsum		Salt	
Ash		Limestone		Sand	
Cement		Limestone Sandy		Shale Green	
Chalk		Marl		Shale Grey	
Coal		No sample		Siltstone	
Dolomite					

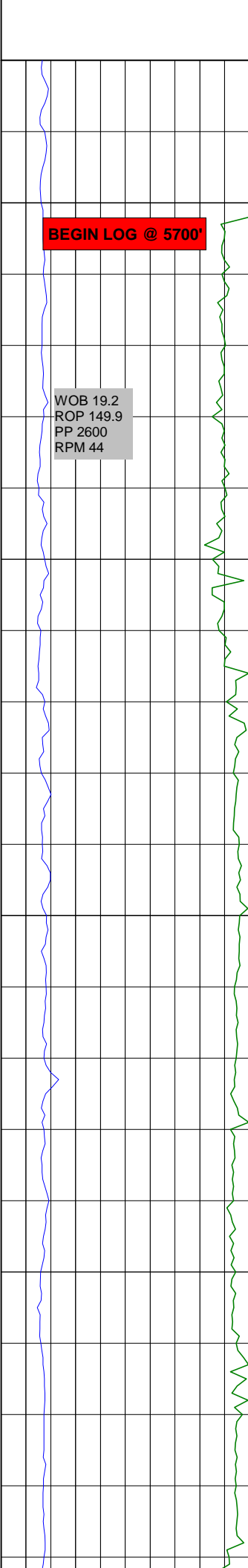
MODIFIERS

Anhydritic	
Argillaceous	
Calcareous	
Carbonaceous	
Cherty	
Conglomeratic	
Dolomite Stringer	
Dolomitic	
Fossiliferous	
Marly	
Micaceous	
Pyritic	
Sandy	
Stylolitic	

SYMBOLS

Core (Recovered)		Fluorescence (Bright)	
Core (Lost)		Fluorescence (Dull)	
Casing Shoe		Fluorescence (Mineral)	
SWC (None)		Gas Show (Fair)	
SWC (Recovered)		Gas Show (Good)	
		Gas Show (Moderate)	
		Gas Show (Poor)	
		Oil Show (Fair)	
		Oil Show (Good)	
		Oil Show (Moderate)	
		Oil Show (Poor)	

ROP / GAMMA		DEPTH	LITH	TOTAL GAS		DESCRIPTIONS
Gamma	CPS			Total Gas	UNIT	
0	1000			0	1000	
Rate of Penetration				Gas Chromatograph c1		
1000	0			0	200000	
				Gas Chromatograph c2		
				0	200000	
				Gas Chromatograph c3		
				0	200000	
				Gas Chromatograph ic4		
				0	200000	
				Gas Chromatograph nc4		



5700

BEGIN LOG @ 5700'

WOB 19.2
ROP 149.9
PP 2600
RPM 44

FMG 4

AJ

SH: LT GRY, PLTY- BLKY,
FRM-HD, RTHY, N CALC

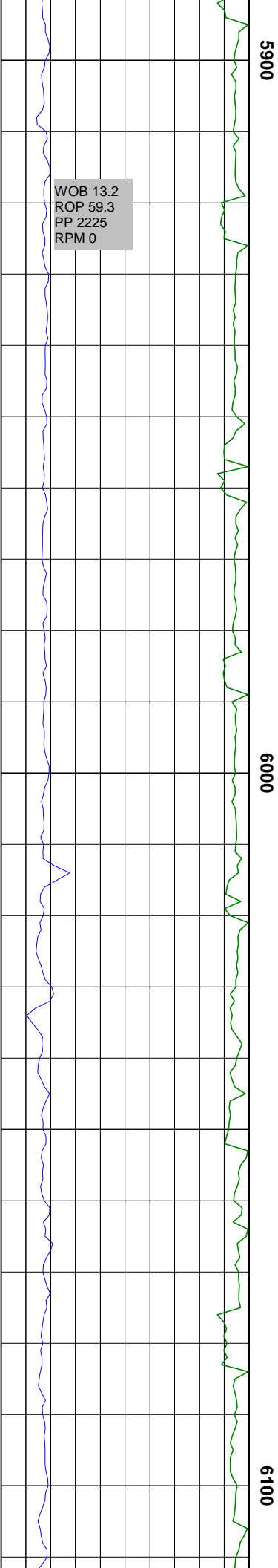
MD 5773' INC 5.8
AZM 182.9 TVD 5764.24

5800

SH: LT GRY-GRY, PLTY- BLKY,
FRM-HD, RTHY, N CALC

MD 5868' INC 16.6
AZM 238.7 TVD 5856.92

PV



5900

6000

6100

WOB 13.2
ROP 59.3
PP 2225
RPM 0

SH: LT GRY-GRY,SME DK
GRY-BLK, PLTY- BLKY,
FRM-HD, RTHY, N CALC

**MD 5963' INC 25.0
AZM 229.4 TVD 5945.61**

SH: LT GRY-GRY,SME DK
GRY-BLK, PLTY- BLKY,
FRM-HD, RTHY, N CALC

**MD 6058' INC 34.0
AZM 226.0 TVD 6028.05**

SH: LT GRY-GRY,SME DK
GRY-BLK, PLTY- BLKY,
FRM-HD, RTHY, CALC

WOB 10.3
ROP 51.7
PP 2508
RPM 0

6200

**MD 6185' INC 47.4
AZM 224.4 TVD 6124.51**

SH: LT GRY-GRY, SME DK
GRY-BLK, PLTY- BLKY,
FRM-HD, RTHY, SLI CALC

AJ

**MD 6280' INC 51.0
AZM 224.4 TVD 6185.04**

6300

SH: LTGY-GY, BLKY - CHNKY,
SLI HD, DULL, GTY, SLI SLTY, V
SLI CALC

WOB 8.0
ROP 126.6
PP 2821

RPM 36

6400

FMG 103

MD 6343' INC 49.4
AZM 221.2 TVD 6165.61

SH: LTGY-GY, BLKY - CHNKY,
SLI HD, DULL, GTY, SLI SLTY, V
SLI CALC

FMG 34

6500

MD 6470' INC 49.6
AZM 218.0 TVD 6307.39

SH: LGY-GY-DGY, BLKY -
CHNKY, SLI HD, DULL, GTY,
SLTY, CALC

WOB 7.1
ROP 95.5
PP 2698
RPM 48

MD 6500' INC 49.6

MD 6597' INC 50.0
AZM 207.3 TVD 6388.69

FMG 179

SH: GY-DGY, BLKY - CHNKY,
FRM-SLI HD, DULL, SL CALC

6600

FMG 147

MD 6691' INC 57.0
AZM 206.1 TVD 6445.62

FMG 103

6700

SH: GY-DGY, BLKY - CHNKY,
FRM-SLI HD, DULL, SL CALC

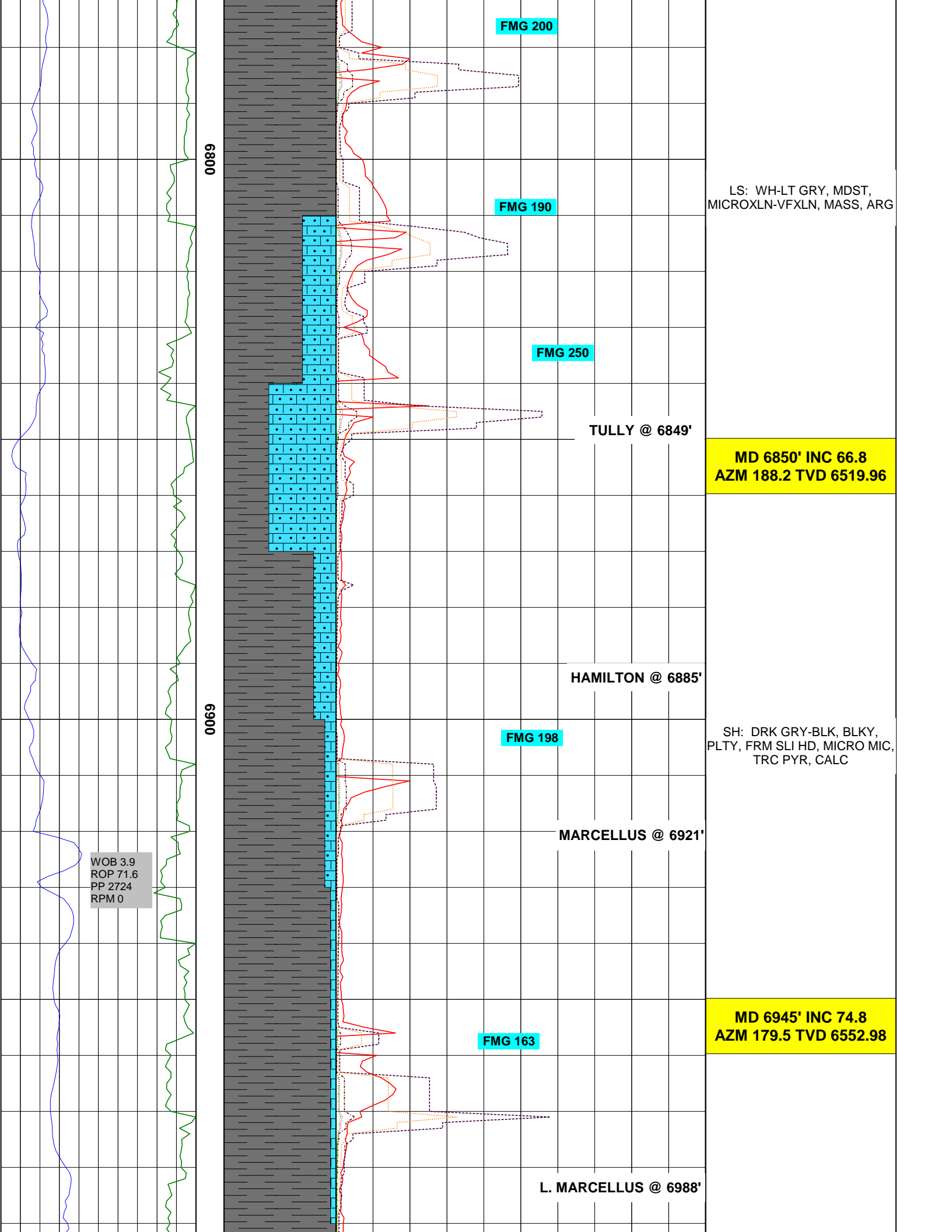
FMG 211

WOB 9.6
ROP 84.9
PP 2360
RPM 0

FMG 159

PV

MD 6755' INC 61.4
AZM 200.1 TVD 6478.24



FMG 200

LS: WH-LT GRY, MDST,
MICROXLN-VFXLN, MASS, ARG

FMG 190

FMG 250

TULLY @ 6849'

**MD 6850' INC 66.8
AZM 188.2 TVD 6519.96**

HAMILTON @ 6885'

FMG 198

SH: DRK GRY-BLK, BLKY,
PLTY, FRM SLI HD, MICRO MIC,
TRC PYR, CALC

MARCELLUS @ 6921'

**MD 6945' INC 74.8
AZM 179.5 TVD 6552.98**

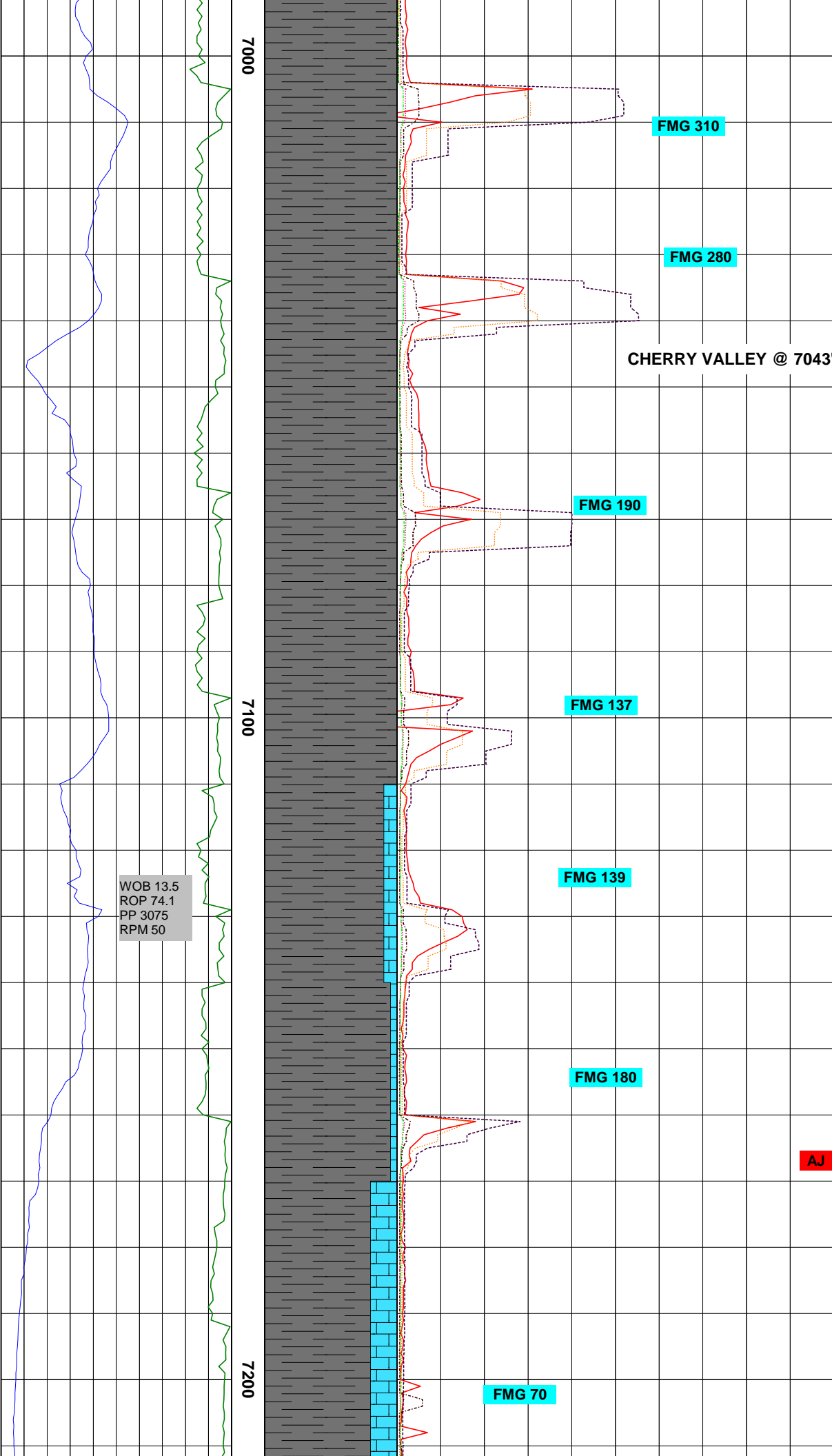
FMG 163

L. MARCELLUS @ 6988'

0089

0090

WOB 3.9
ROP 71.6
PP 2724
RPM 0



SH: DRK GRY-BLK, BLKY,
PLTY, FRM SLI HD, MICRO MIC,
CALC

FMG 310

FMG 280

CHERRY VALLEY @ 7043'

**MD 7040' INC 78.3
AZM 176.9 TVD 6576.59**

FMG 190

FMG 137

SH: DRK GRY-BLK, BLKY,
PLTY, FRM SLI HD, MICRO MIC,
CALC

WOB 13.5
ROP 74.1
PP 3075
RPM 50

FMG 139

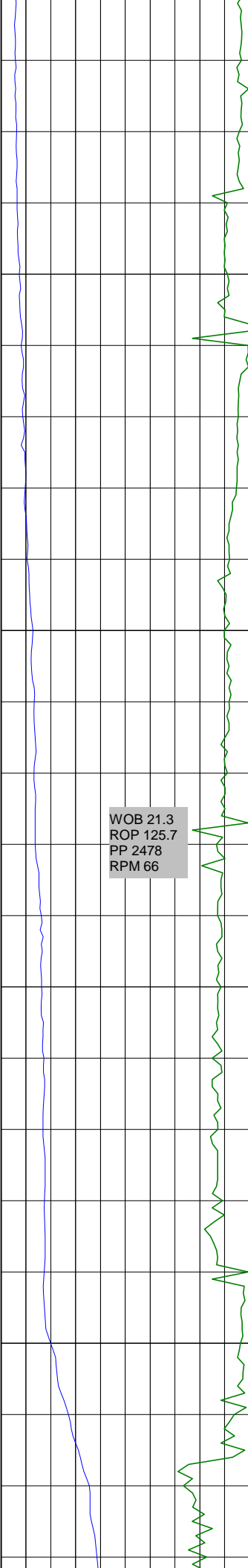
**MD 7198' INC 88.3
AZM 165.3 TVD 6596.45**

FMG 180

AJ

FMG 70

SH: LGY-GY, BLKY- PLTY,
FRM-SLHD, CALC; LMST



7300

7400

WOB 21.3
ROP 125.7
PP 2478
RPM 66



FMG 14

FMG 6

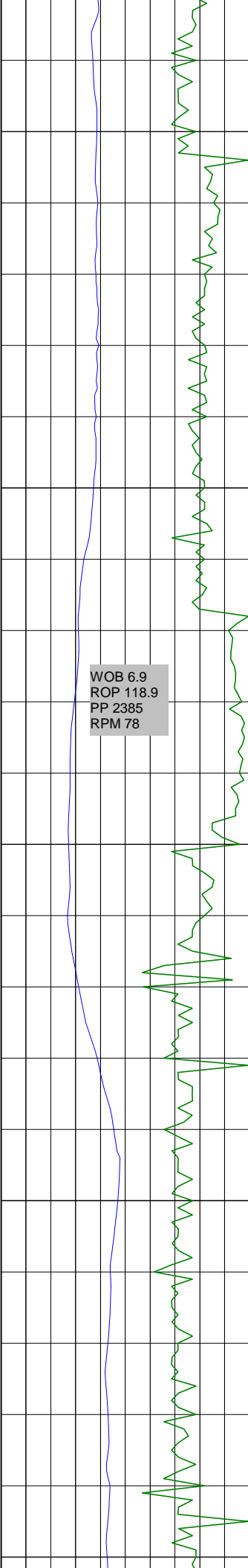
FMG 21

MD 7270' INC 90.5
AZM 160.1 TVD 6597.20

SH: GY-DGY, BLKY- PLTY,
FRM-SLHD, CALC; TRC LMST

MD 7397' INC 91.7
AZM 158.4 TVD 6595.31

SH: GY-DGY, BLKY- PLTY,
FRM-SLHD, CALC; TRC LMST



7500

7600

FMG 210

MD 7460' INC 92.2
 AZM 157.0 TVD 6593.17

FMG 166

SH: DRK GRY-BLK, BLKY -
 PLTY, FRM SLI HD, CALC

FMG 97

MD 7587' INC 92.0
 AZM 153.4 TVD 6588.41

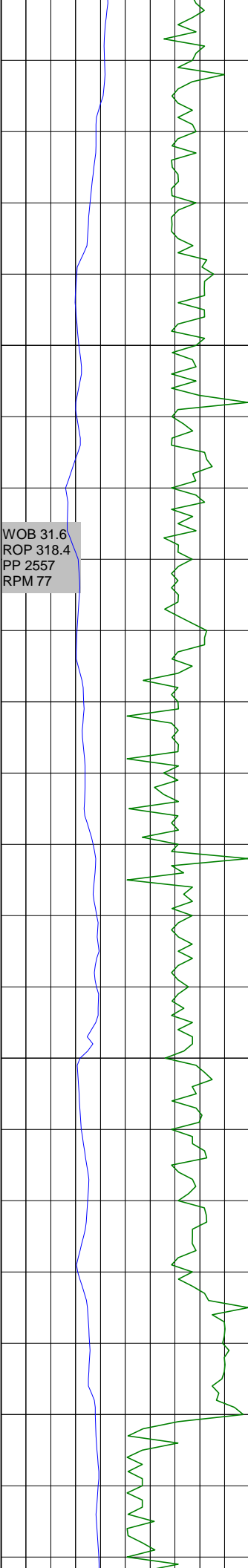
FMG 120

SH: DRK GRY-BLK, BLKY -
 PLTY, FRM SLI HD, CALC

FMG 270

MD 7650' INC 92.5

MD 7650' INC 91.5
AZM 152.3 TVD 6586.48



7700

7800

FMG 360

FMG 330

SH: DRK GRY-BLK, BLKY -
PLTY, FRM SLI HD, CALC

FMG 240

MD 7777' INC 91.3
AZM 154.0 TVD 6583.38

FMG 270

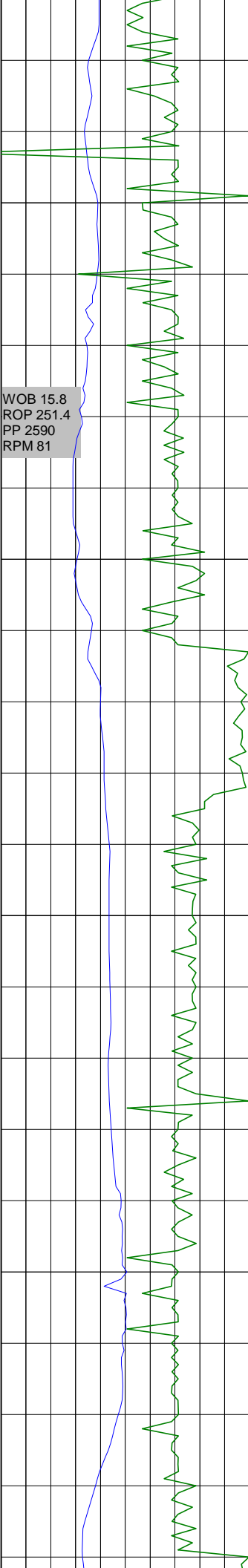
SH: DRK GRY-BLK, BLKY -
PLTY, FRM SLI HD, CALC

FMG 260

FMG 280

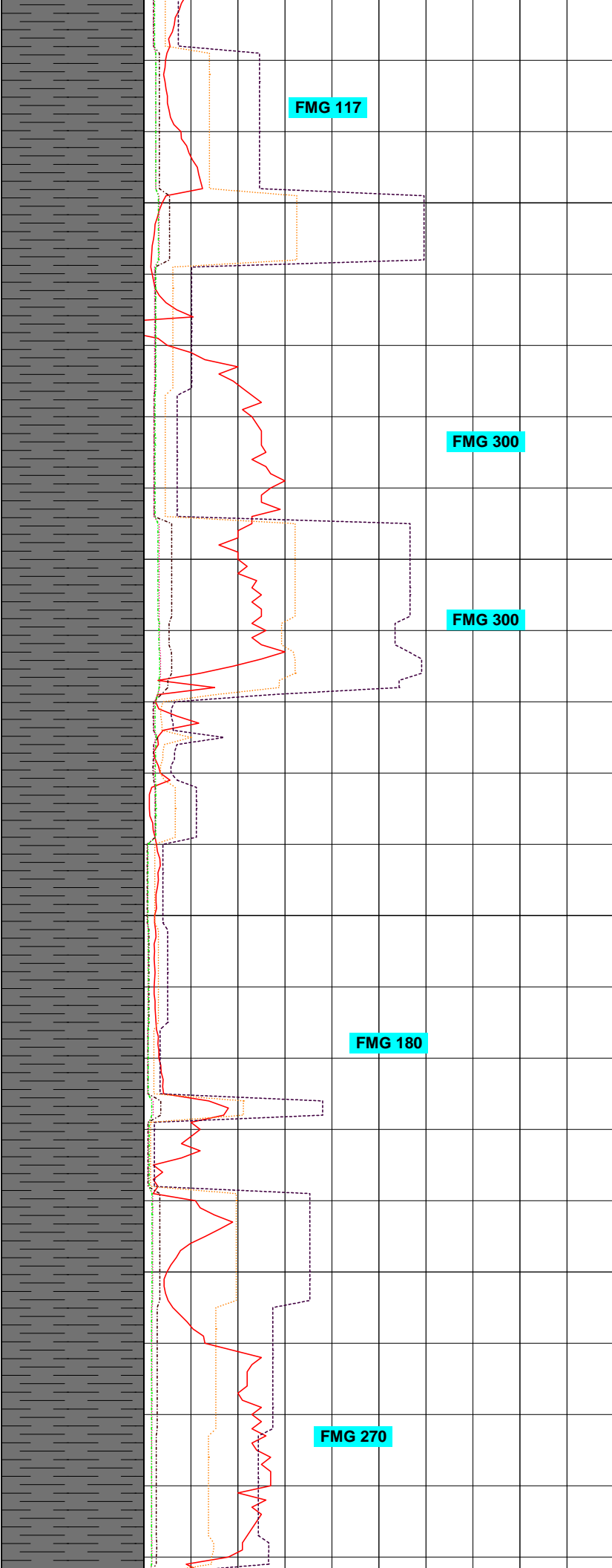
MD 7840' INC 88.8
AZM 151.1 TVD 6583.32

FMG 180



7900

8000

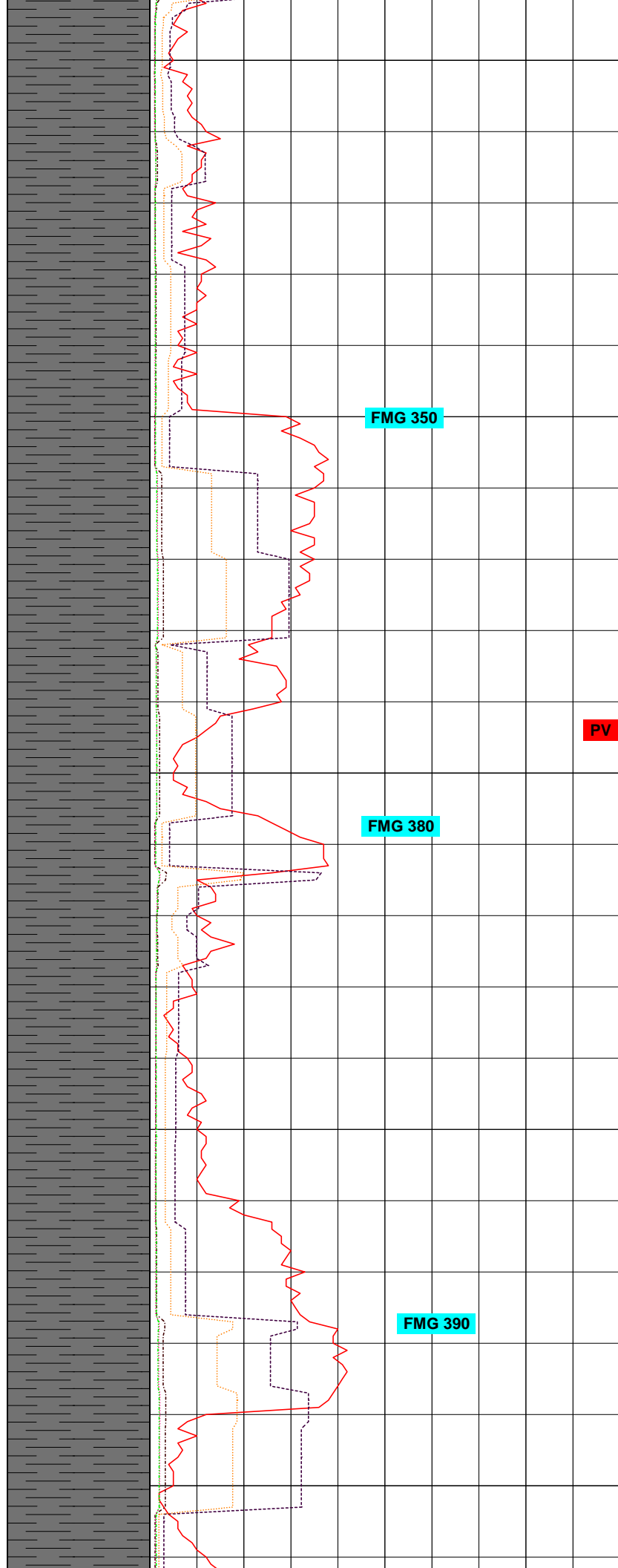
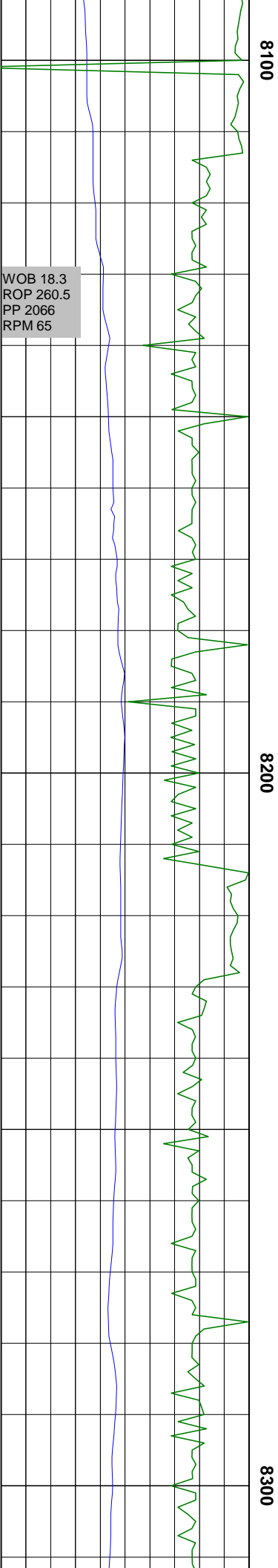


SH: DRK GRY-BLK, BLKY -
PLTY, FRM SLI HD, CALC

**MD 7966' INC 87.2
AZM 149.9 TVD 6589.04**

SH: DRK GRY-BLK, BLKY -
PLTY, FRM SLI HD, CALC

**MD 8029' INC 88.3
AZM 150.8 TVD 6594.96**



SH: DRK GRY-BLK, BLKY -
PLTY, FRM SLI HD, CALC

**MD 8156' INC 89.5
AZM 152.7 TVD 6596.17**

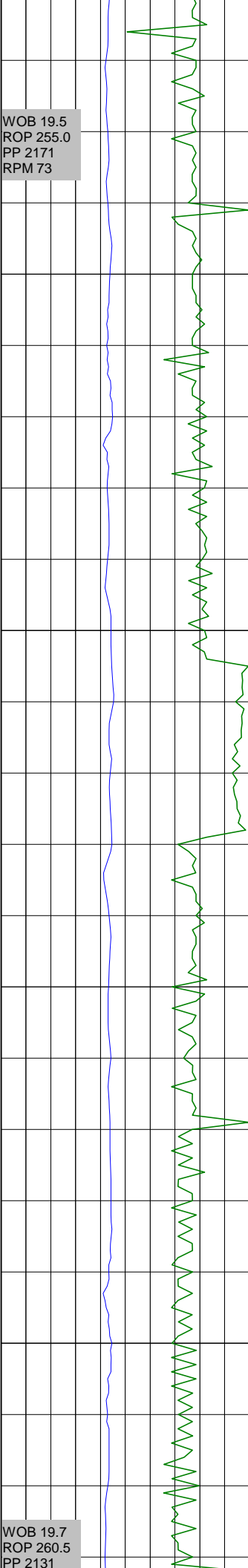
SH: DRK GRY-BLK, BLKY -
PLTY, FRM SLI HD, CALC

**MD 8283' INC 89.9
AZM 154.5 TVD 6596.61**

SH: DRK GRY-BLK, BLKY -
PLTY, FRM SLI HD, CALC

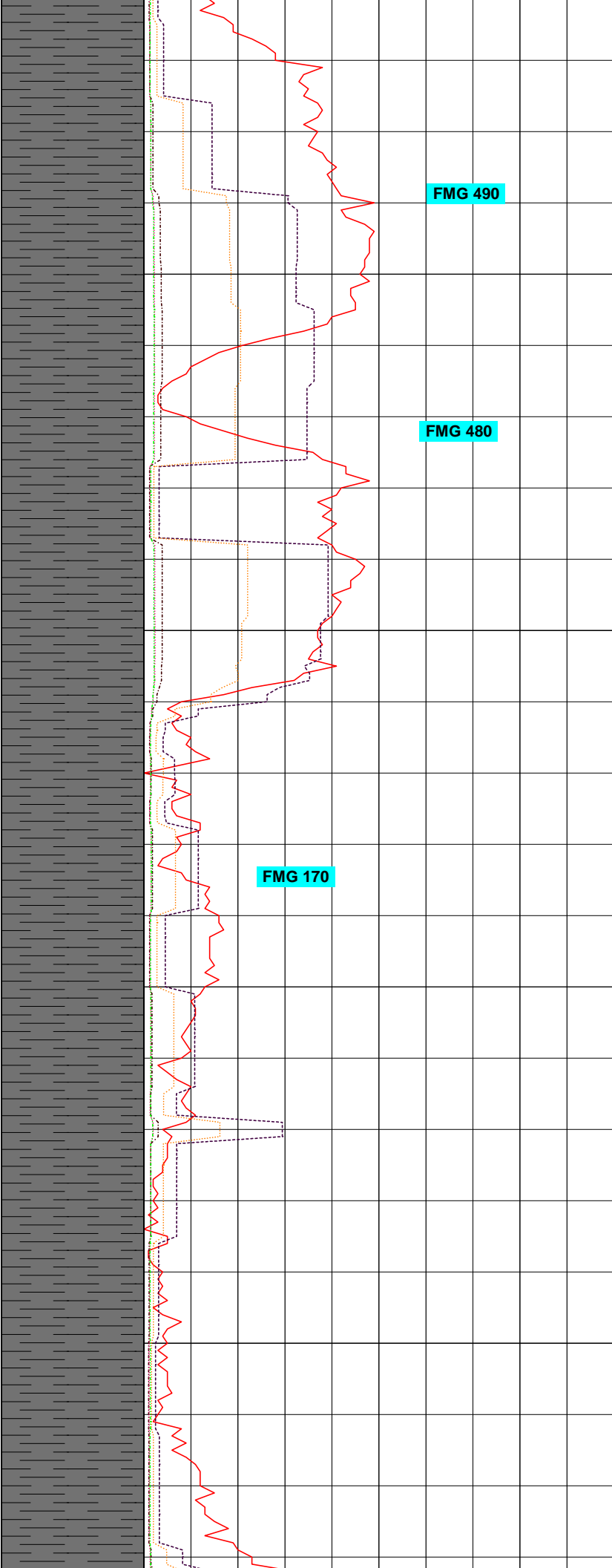
WOB 19.5
ROP 255.0
PP 2171
RPM 73

WOB 19.7
ROP 260.5
PP 2131



8400

8500



FMG 490

FMG 480

FMG 170

MD 8346' INC 89.7
AZM 153.3 TVD 6596.83

SH: DRK GRY-BLK, BLKY -
PLTY, FRM SLI HD, CALC

MD 8473' INC 88.8
AZM 153.7 TVD 6598.78

SH: DRK GRY-BLK, BLKY -
PLTY, FRM SLI HD, CALC

RPM 66

FMG 390

MD 8536' INC 88.5
AZM 154.0 TVD 6600.26

FMG 250

8600

SH: DRK GRY-BLK, BLKY -
PLTY, FRM SLI HD, CALC

FMG 410

MD 8536' INC 88.5
AZM 154.0 TVD 6600.26

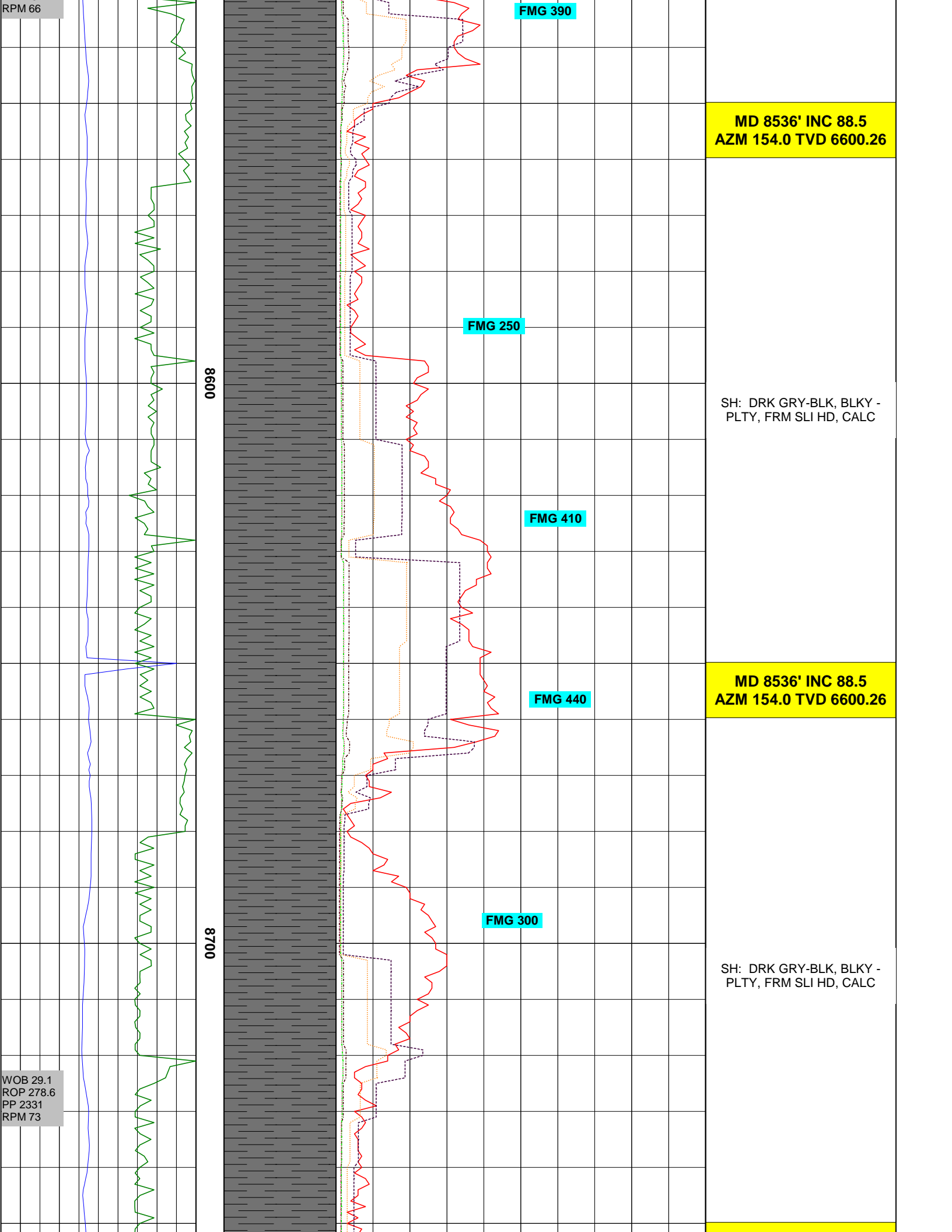
FMG 440

8700

FMG 300

SH: DRK GRY-BLK, BLKY -
PLTY, FRM SLI HD, CALC

WOB 29.1
ROP 278.6
PP 2331
RPM 73



MD 8726' INC 89.3
AZM 157.5 TVD 6603.69

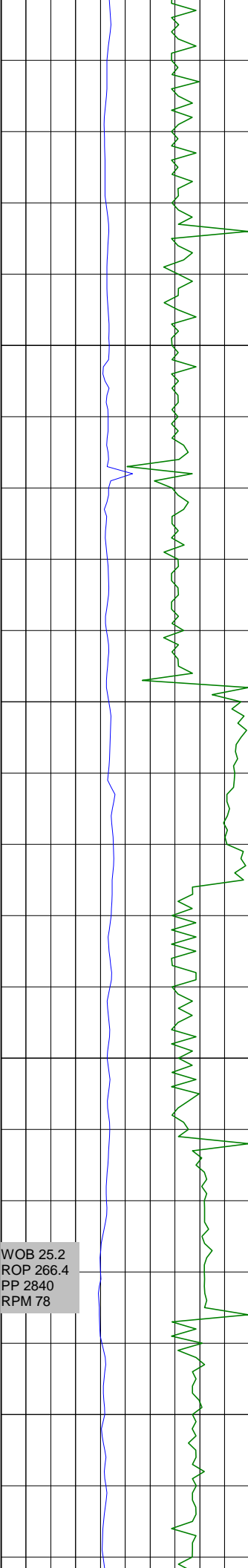
SH: DRK GRY-BLK, BLKY -
PLTY, FRM SLI HD, CALC

MD 8854' INC 88.9
AZM 156.8 TVD 6606.59

AJ

SH: DRK GRY-BLK, BLKY -
PLTY, FRM SLI HD, CALC

MD 8881' INC 88.9
AZM 155.5 TVD 6608.59



0080

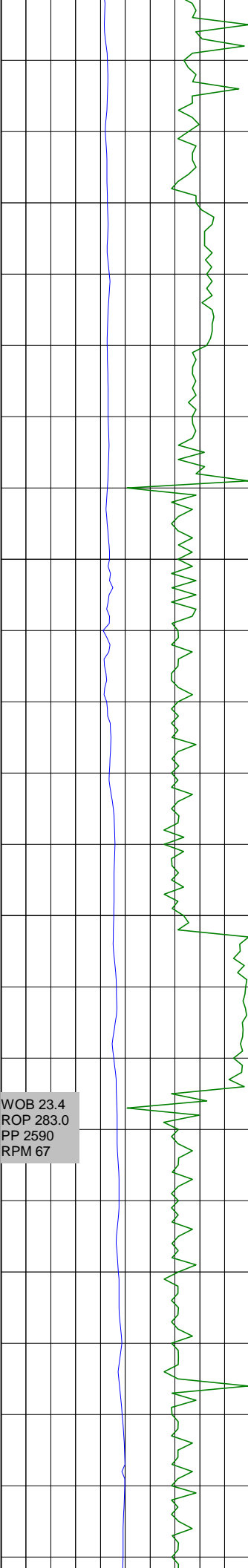
0090

FMG 370

FMG 340

FMG 280

FMG 310



9000

9100

WOB 23.4
ROP 283.0
PP 2590
RPM 67

FMG 260

FMG 370

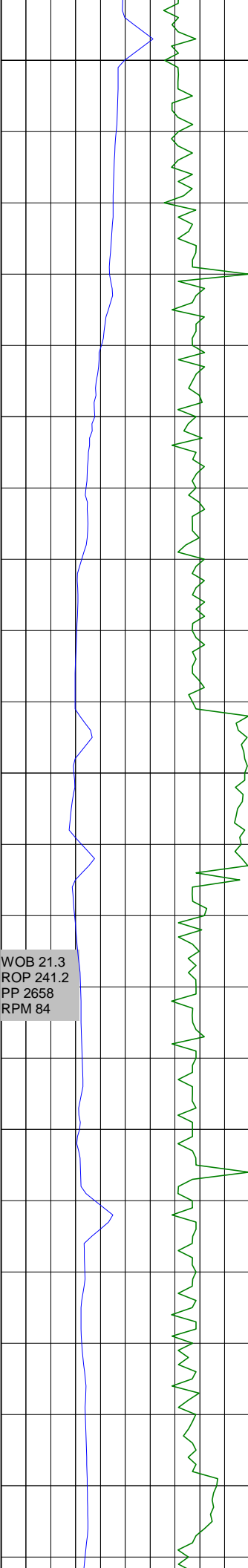
FMG 330

SH: DRK GRY-BLK, BLKY -
PLTY, FRM SLI HD, CALC

**MD 9044' INC 88.0
AZM 154.2 TVD 6612.16**

SH: DRK GRY-BLK, BLKY -
PLTY, FRM SLI HD, CALC

**MD 9171' INC 88.1
AZM 154.1 TVD 6614.34**



9200

9300

9400

WOB 21.3
ROP 241.2
PP 2658
RPM 84

FMG 230

FMG 390

FMG 370

FMG 210

FMG 160

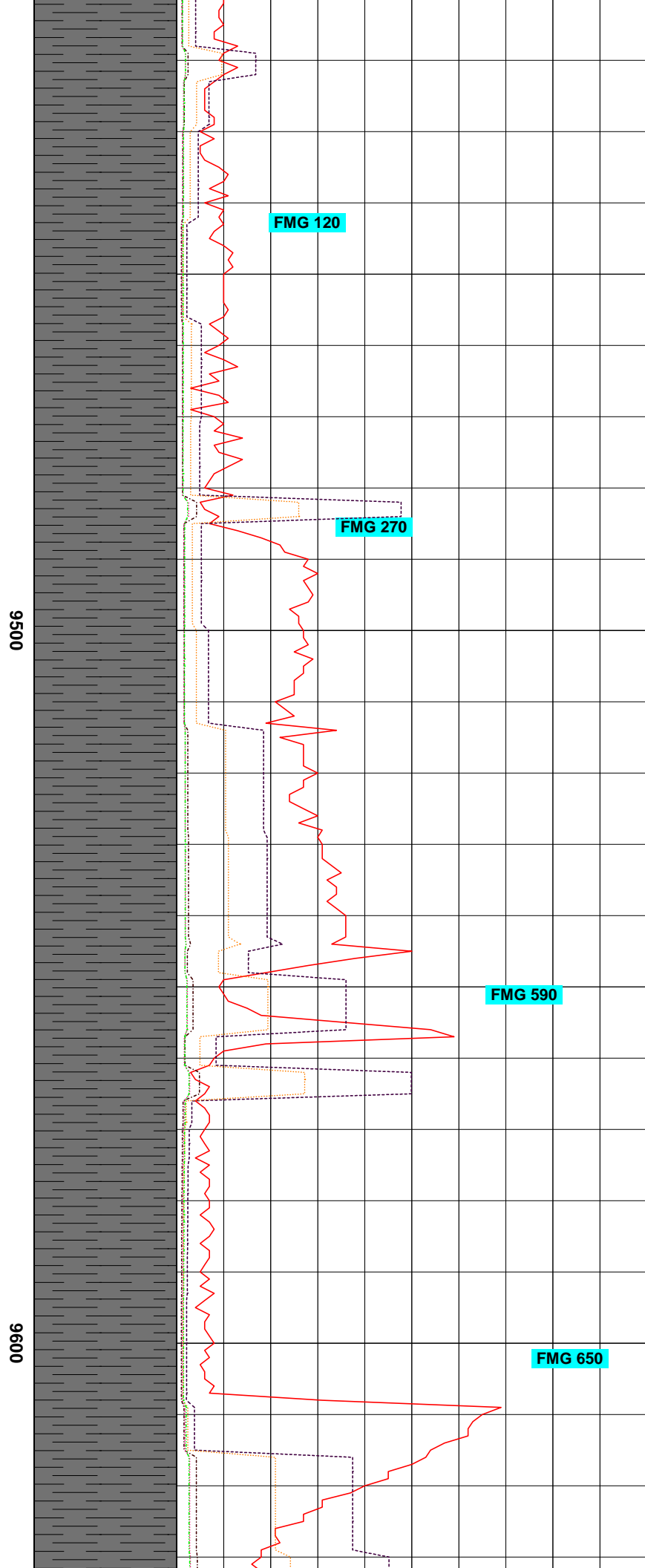
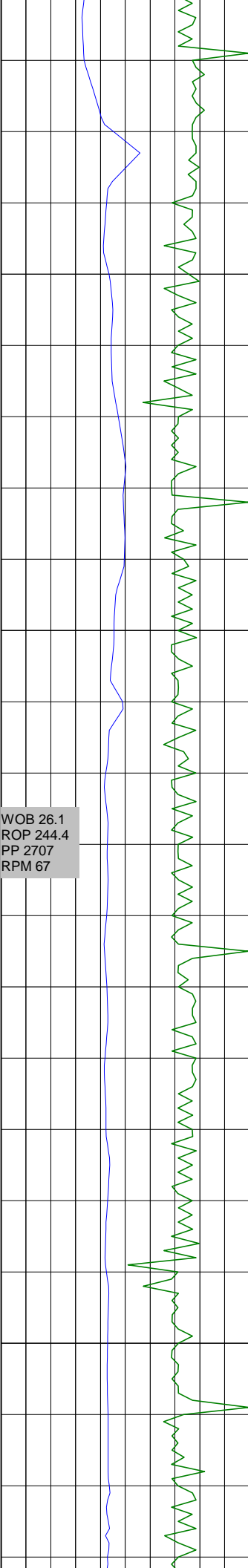
SH: DRK GRY-BLK, BLKY -
PLTY, FRM SLI HD, CALC

**MD 9298' INC 88.8
AZM 156.4 TVD 6618.38**

SH: DRK GRY-BLK, BLKY -
PLTY, FRM SLI HD, CALC

**MD 9361' INC 89.6
AZM 157.3 TVD 6619.26**

SH: DRK GRY-BLK, BLKY -
PLTY, FRM SLI HD, CALC

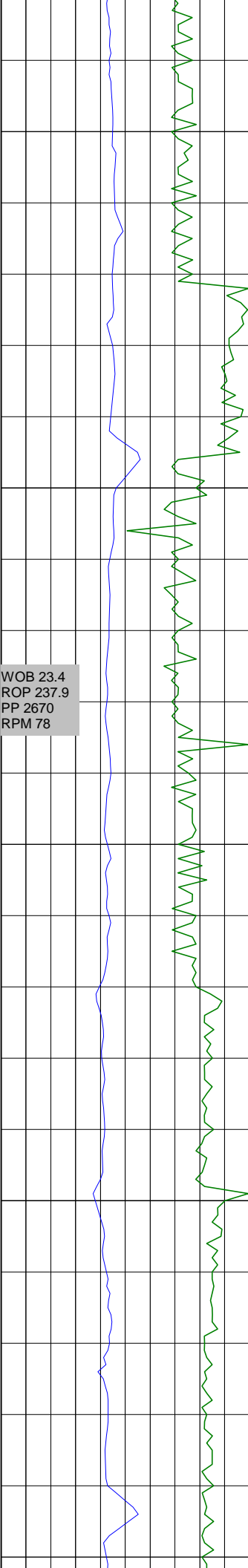


MD 9488' INC 89.8
AZM 158.1 TVD 6619.81

SH: DRK GRY-BLK, BLKY -
PLTY, FRM SLI HD, CALC

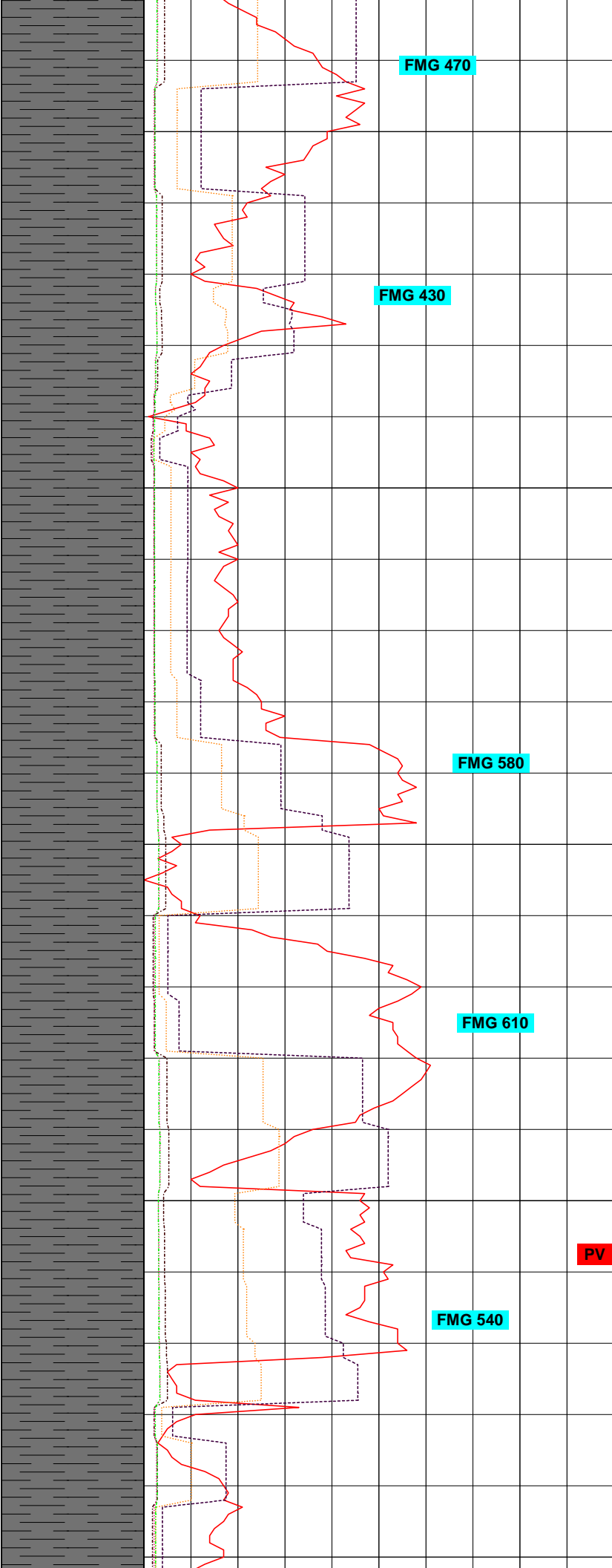
MD 9551' INC 89.1
AZM 156.4 TVD 6620.42

SH: DRK GRY-BLK, BLKY -
PLTY, FRM SLI HD, CALC



9700

9800



FMG 470

FMG 430

FMG 580

FMG 610

FMG 540

MD 9678' INC 89.4
 AZM 155.5 TVD 6622.69

SH: DRK GRY-BLK, BLKY -
 PLTY, FRM SLI HD, CALC

MD 9741' INC 89.0
 AZM 155.7 TVD 6623.57

SH: DRK GRY-BLK, BLKY -
 PLTY, FRM SLI HD, CALC

PV

MD 9800' INC 89.0
 AZM 155.7 TVD 6623.57

MD 9868' INC 88.9
AZM 154.2 TVD 6626.50

WOB 28.2
ROP 249.8
PP 2389
RPM 80

9900

SH: DRK GRY-BLK, BLKY -
PLTY, FRM SLI HD, CALC

FMG 540

FMG 500

MD 9931' INC 88.8
AZM 153.7 TVD 6627.77

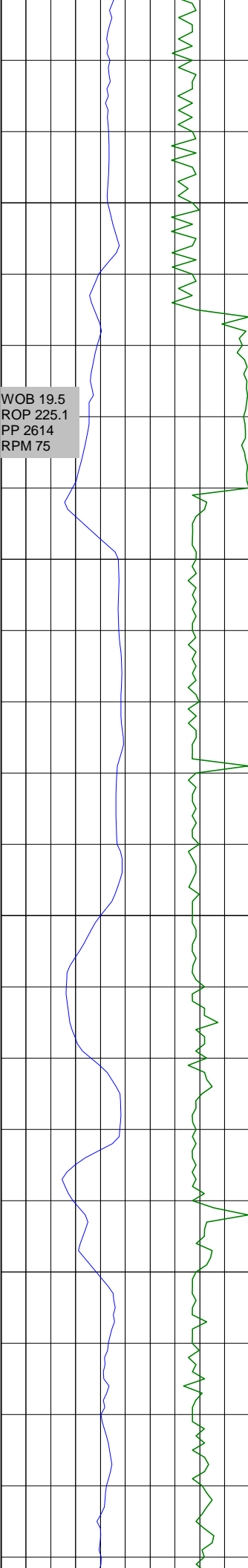
FMG 440

10000

SH: DRK GRY-BLK, BLKY -
PLTY, FRM SLI HD, CALC

FMG 470

MD 10058' INC 88.3
AZM 153.7 TVD 6630.82



10100

10200



FMG 390

FMG 810

FMG 460

SH: DRK GRY-BLK, BLKY -
PLTY, FRM SLI HD, CALC

**MD 10121' INC 88.6
AZM 154.6 TVD 6632.52**

SH: DRK GRY-BLK, BLKY -
PLTY, FRM SLI HD, CALC

**MD 10247' INC 88.8
AZM 154.2 TVD 6635.27**

WOB 19.5
ROP 225.1
PP 2614
RPM 75

AJ

SH: DRK GRY-BLK, BLKY -
PLTY, FRM SLI HD, CALC

10300

FMG 50

**MD 10374' INC 88.1
AZM 152.9 TVD 6638.54**

10400

FMG 490

SH: DRK GRY-BLK, BLKY -
PLTY, FRM SLI HD, CALC

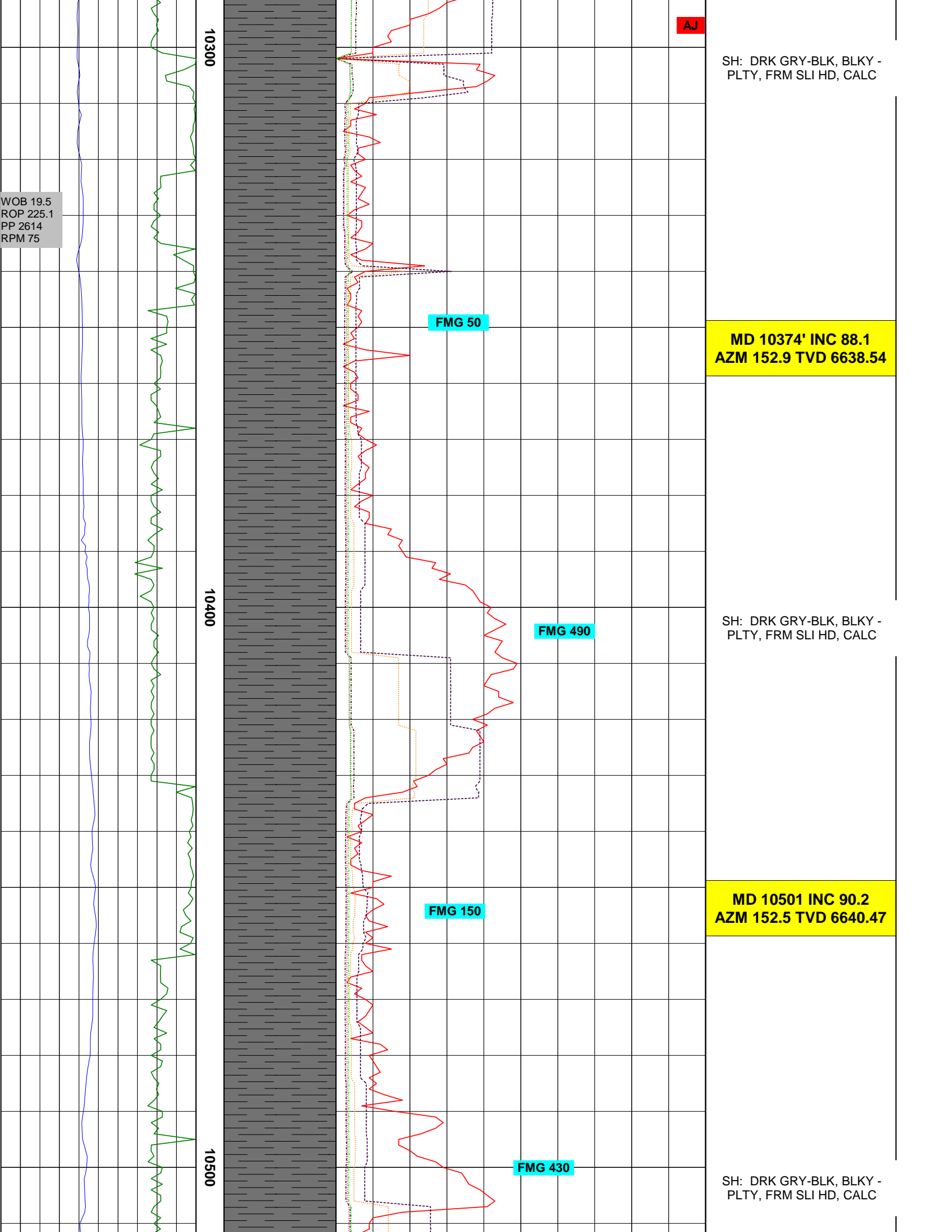
FMG 150

**MD 10501 INC 90.2
AZM 152.5 TVD 6640.47**

10500

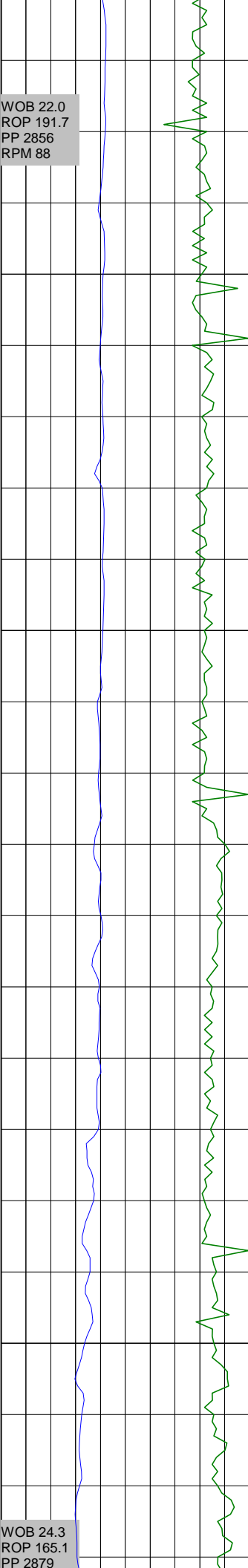
FMG 430

SH: DRK GRY-BLK, BLKY -
PLTY, FRM SLI HD, CALC



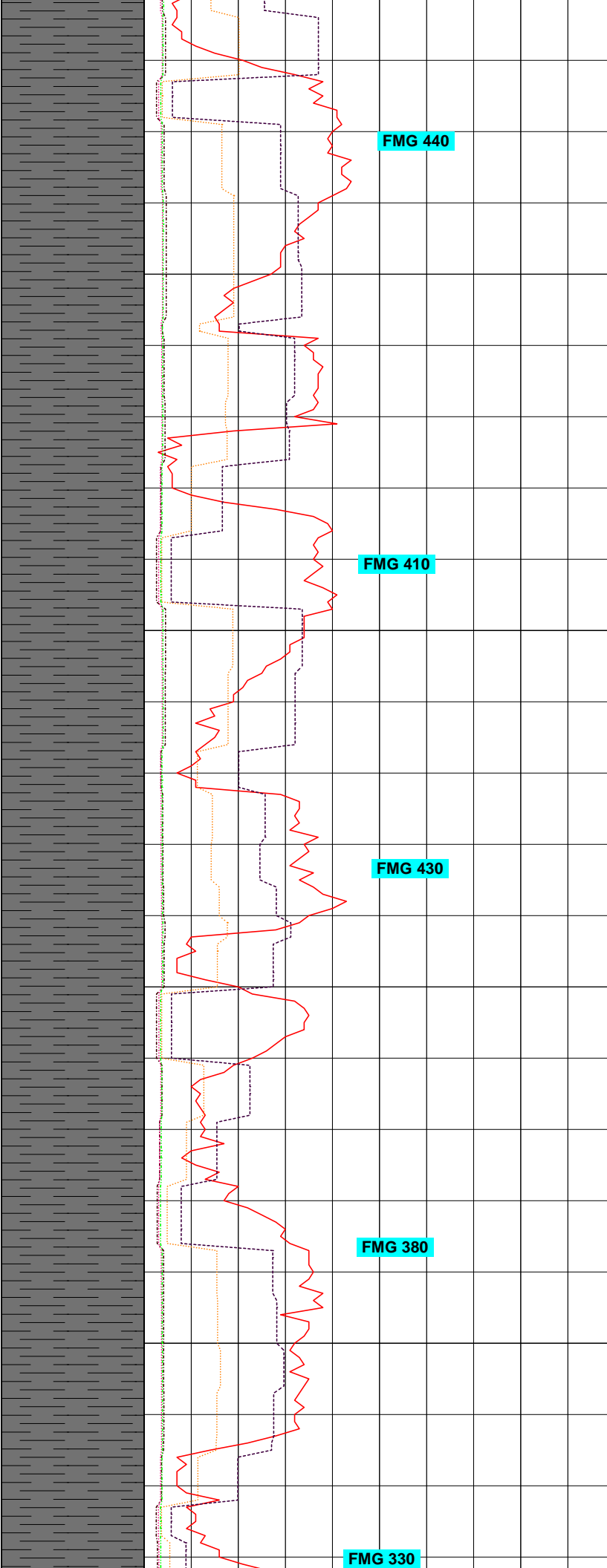
WOB 22.0
ROP 191.7
PP 2856
RPM 88

WOB 24.3
ROP 165.1
PP 2879



10600

10700



**MD 10564 INC 89.8
AZM 151.9 TVD 6640.47**

SH: DRK GRY-BLK, BLKY -
PLTY, FRM SLI HD, CALC

**MD 10691 INC 89.9
AZM 152.3 TVD 6640.85**

SH: DRK GRY-BLK, BLKY -
PLTY, FRM SLI HD, CALC

FMG 330

RPM 77

WOB 27.0
ROP 173.7
PP 2850
RPM 64

**MD 10754 INC 89.7
AZM 151.4 TVD 6641.07**

SH: DRK GRY-BLK, BLKY -
PLTY, FRM SLI HD, CALC

**MD 10881 INC 89.3
AZM 151.0 TVD 6642.29**

SH: DRK GRY-BLK, BLKY -
PLTY, FRM SLI HD, CALC

**MD 11000 INC 89.3
AZM 151.0 TVD 6643.56**

10800

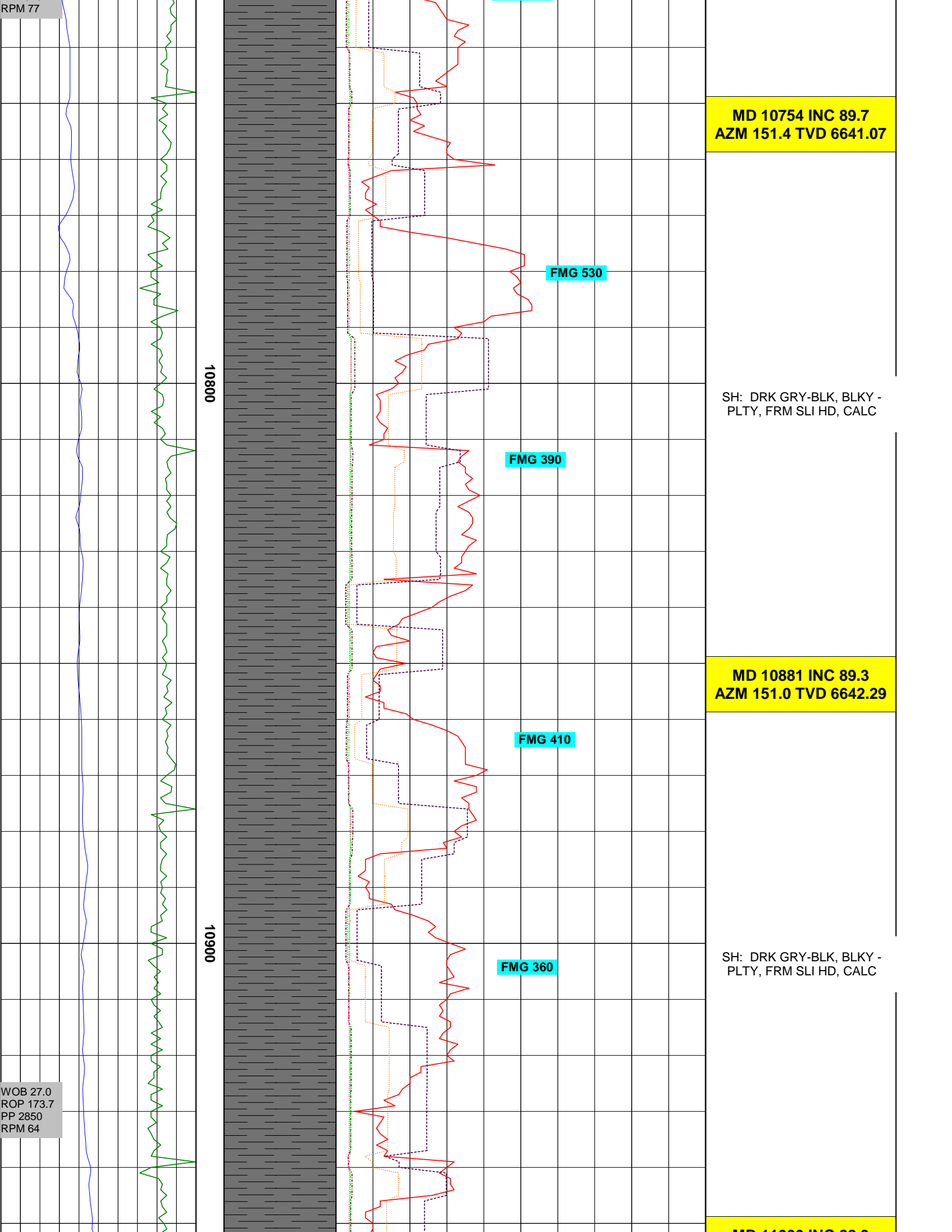
10900

FMG 530

FMG 390

FMG 410

FMG 360



MD 11000 INC 88.3
AZM 150.0 TVD 6644.86

SH: DRK GRY-BLK, BLKY -
PLTY, FRM SLI HD, CALC

PROJ MD 11056 INC 88.3
AZM 150.0 TVD 6646.52

FMG 360

FMG 400

TD @ 11056' MD

11000

11100

WOB 19.2
ROP 148.3
PP 3004
RPM 72





COMPANY : EQT Production
 WELL : Oxford 44 513773
 FIELD : Doddridge
 COUNTY : Doddridge
 STATE : WV

DATE : 9/17/11
 API : 47-017-06025
 SUPERVISOR : Allen Johnson
 CREW : Patrick Venturella
 UNIT : DCT-9

ABBREVIATIONS

CO - Circulated Out
 CF - Check Flow
 NB - New Bit
 SVY - Survey
 ST - Short Trip
 CG - Connection Gas
 LAT - Logged After Trip

LITHOLOGY

Anhydrite		Gypsum		Salt	
Ash		Limestone		Sand	
Cement		Limestone Sandy		Shale Green	
Chalk		Marl		Shale Grey	
Coal		No sample		Siltstone	
Dolomite					

MODIFIERS

Anhydritic	
Argillaceous	
Calcareous	
Carbonaceous	
Cherty	
Conglomeratic	
Dolomite Stringer	
Dolomitic	
Fossiliferous	
Marly	
Micaceous	
Pyritic	
Sandy	
Stylolitic	

SYMBOLS

Core (Recovered)		Fluorescence (Bright)	
Core (Lost)		Fluorescence (Dull)	
Casing Shoe		Fluorescence (Mineral)	
SWC (None)		Gas Show (Fair)	
SWC (Recovered)		Gas Show (Good)	
		Gas Show (Moderate)	
		Gas Show (Poor)	
		Oil Show (Fair)	
		Oil Show (Good)	
		Oil Show (Moderate)	
		Oil Show (Poor)	