



PHOENIX TECHNOLOGY SERVICES

MID
1:240
Feet

Client: FOT
Well Name: 513773
Country: Doddridge Co, WV

MWD Gamma / ROP

Company Representative

Unique ID/API:

Surface Location: Doddridge Co, WV

Country: USA

State: WV

Rig Name: Savannah 654

Latitude: 39°8'42.841 N

Longitude: 80°48'51.108 W

Geologist

Dane Fischer

Directional Drillers

Jason Jones

Russell Harris

License/Permit#:

Job No: 1130546

Permanent Datum: 0

Drilling Measurement From: 0

GL: 0 Feet

KB: 0 Feet

Spud Date: -

Print Date: September 22, 2011

Log Start Depth: 5680 Feet

Log End Depth: 11060 Feet

Bottom Hole Temp: NA °F

MWD Operator

Anthony Akers

Noel Parker

Eric Freeman

Leg Name

Main Leg

Comments:

PHOENIX TECHNOLOGY SERVICES LP (PHOENIX) DOES NOT MAKE AND EXPRESSLY DISCLAIMS ALL WARRANTIES, REPRESENTATIONS AND CONDITIONS, WITH RESPECT TO THE INFORMATION CONTAINED IN THIS DOCUMENT, WHETHER ORAL OR WRITTEN, EXPRESS OR IMPLIED OR ARISING FROM CONTRACT OR STATUTE INCLUDING, WITHOUT LIMITATION, THE IMPLIED WARRANTIES OF MERCHANTABILITY, ACCURACY AND FITNESS FOR A PARTICULAR PURPOSE. ANYONE USING THIS INFORMATION DOES SO AT THEIR OWN RISK AND ACKNOWLEDGES AND AGREES THAT PHOENIX SHALL NOT BE LIABLE FOR ANY ERROR, OMISSION, DEFECT, DELAY, INEFFICIENCY OR INCONVENIENCE IN THE INFORMATION AND WITHOUT LIMITING THE FOREGOING, PHOENIX DOES NOT WARRANT THAT THE INFORMATION OR THE USE THEREOF WILL BE FREE OF ALL ERRORS OR THAT IT DOES NOT INFRINGE ANY THIRD PARTY RIGHTS. ANYONE USING THE INFORMATION AGREES TO INDEMNIFY AND HOLD PHOENIX HARMLESS FROM ALL CLAIMS, ACTIONS, COSTS (INCLUDING LEGAL COSTS) ON A SOLIDUM AND HIS/OWN CLIENT BASIS, AND LIABILITIES ARISING FROM OR IN CONNECTION WITH THE USE OF THE INFORMATION.

| BitRun: | 1 | 2 |
|--------------------------|------------|------------|
| Start Depth (ft): | 5680 | 7256 |
| End Depth (ft): | 7256 | 11056 |
| Start Date: | | 2011.09/19 |
| End Date: | 2011.09/19 | 2011.09/22 |
| Gamma Scale Factor: | 4.031 | 4.031 |
| Stoney-b-Bit (PTB): | 56 | 56 |
| Gamma-b-Bit (GTB): | 51 | 51 |
| Tool Carrier ID (ft): | 2.875 | 2.875 |
| Tool Carrier OD (ft): | 5 | 5 |
| Hole Size (ft): | 8.5 | 7.875 |
| Casing Size (ft): | 9.625 | 9.625 |
| Casing Start Depth (ft): | 0 | 0 |
| Casing End Depth (ft): | 3031 | 3031 |
| Mud Type: | WBM | WBM |
| Mud Weight (lb/gal): | 12.1 | 12.1 |
| Mud Viscosity: | 41 | 41 |
| KCL Correction Factor: | 0.000 | 0.000 |
| Mud KCL Content (%): | 0.0001 | 0.0001 |
| Comment: | - | - |

| BitRun: | | |
|--------------------------|--|--|
| Start Depth (ft): | | |
| End Depth (ft): | | |
| Start Date: | | |
| End Date: | | |
| Gamma Scale Factor: | | |
| Stoney-b-Bit (PTB): | | |
| Gamma-b-Bit (GTB): | | |
| Tool Carrier ID (ft): | | |
| Tool Carrier OD (ft): | | |
| Hole Size (ft): | | |
| Casing Size (ft): | | |
| Casing Start Depth (ft): | | |
| Casing End Depth (ft): | | |
| Mud Type: | | |
| Mud Weight (lb/gal): | | |
| Mud Viscosity: | | |
| KCL Correction Factor: | | |
| Mud KCL Content (%): | | |
| Comment: | | |

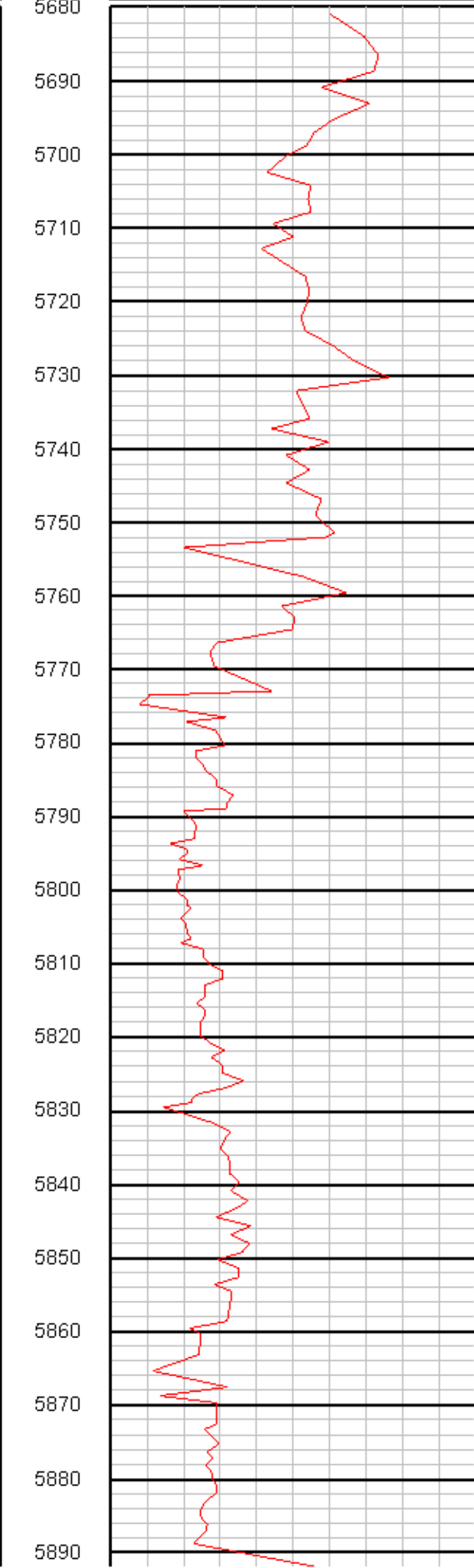
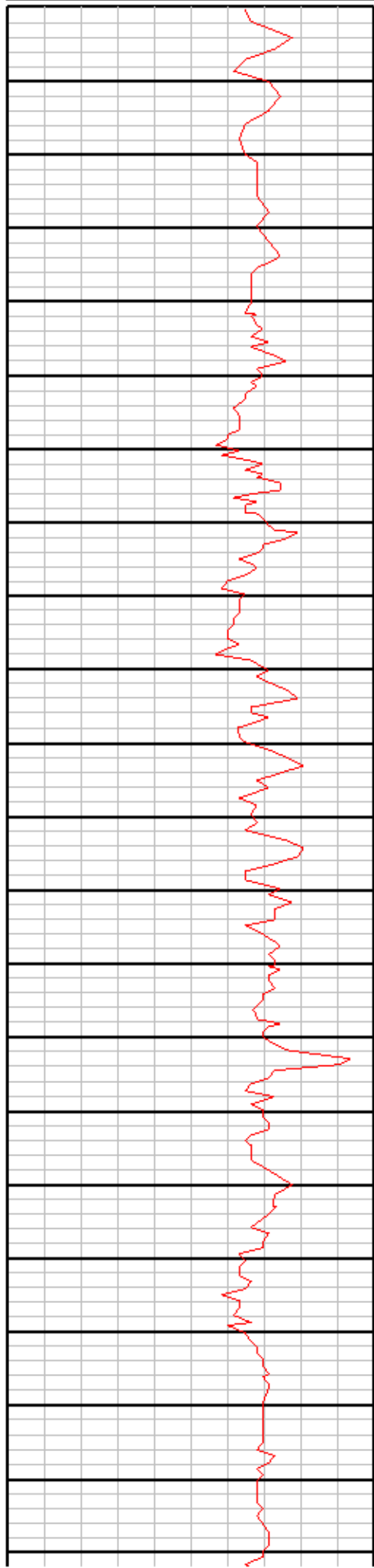


EQT
513773
Doddridge Co, WV
1130546

MD
1:240
Feet

| | | |
|-----|-------------|-----|
| 0 | Gamma (API) | 250 |
| 250 | Gamma (API) | 500 |
| 500 | Gamma (API) | 750 |

| | | |
|-----|-------------|-----|
| 0 | ROP (ft/hr) | 200 |
| 200 | ROP (ft/hr) | 400 |
| 400 | ROP (ft/hr) | 600 |



MD: 5710
INC: 3.6
AZM: 302.1

MD: 5742
INC: 3.7
AZM: 296

MD: 5773
INC: 5.8
AZM: 282.9

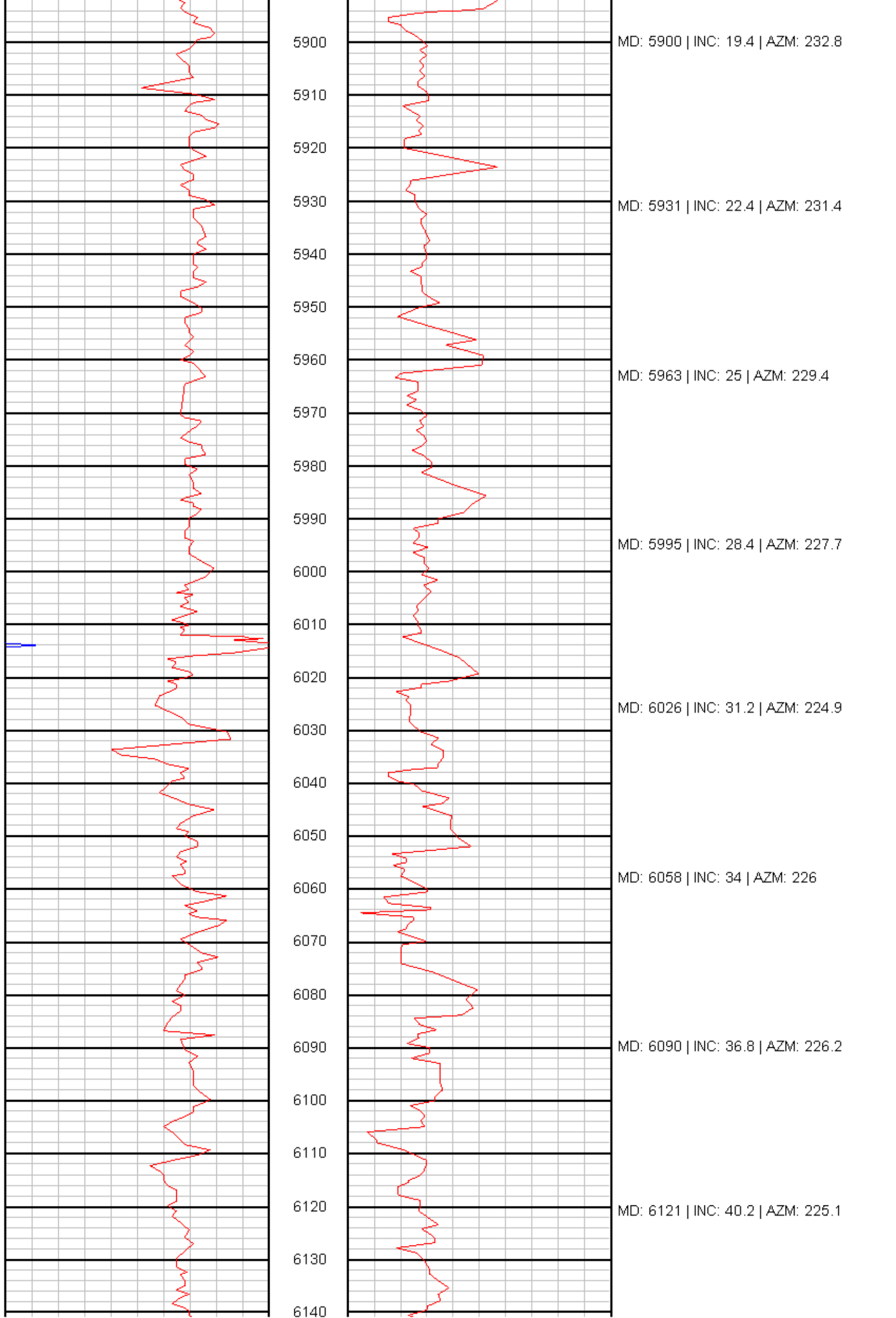
MD: 5805 | INC: 11.6 | AZM: 265.5

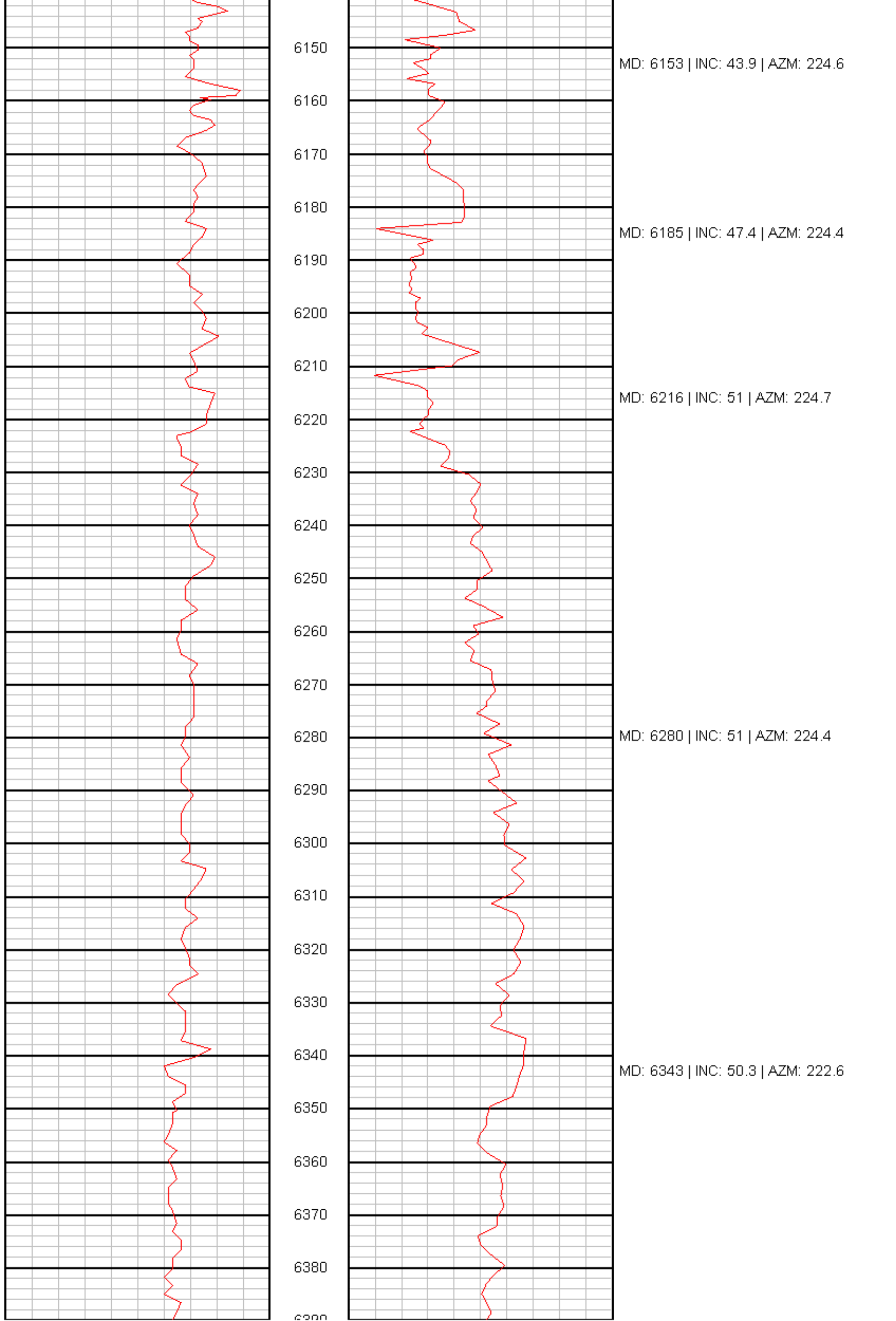
MD: 5837 | INC: 14.5 | AZM: 251

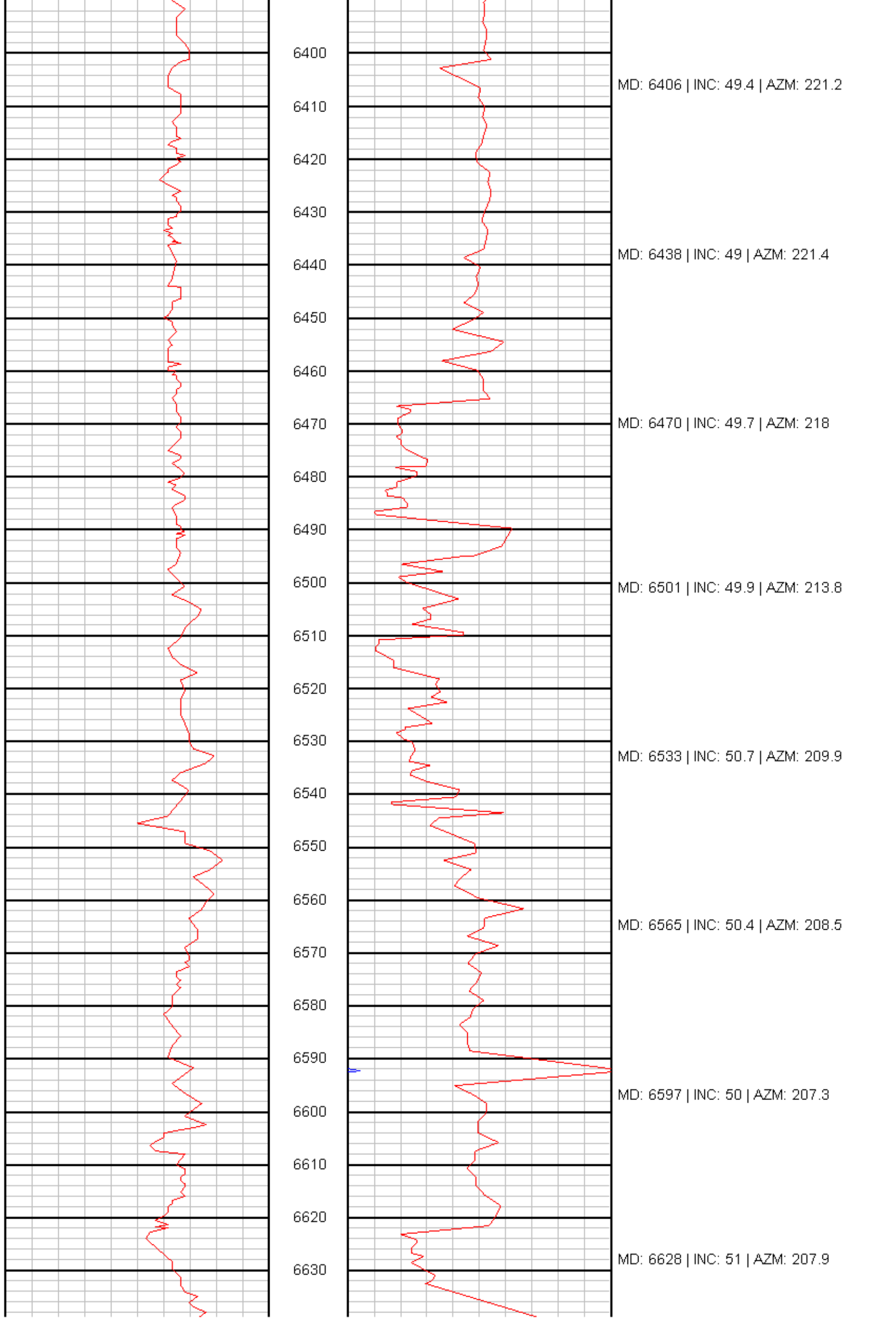
MD: 5868 | INC: 16.6 | AZM: 238.7

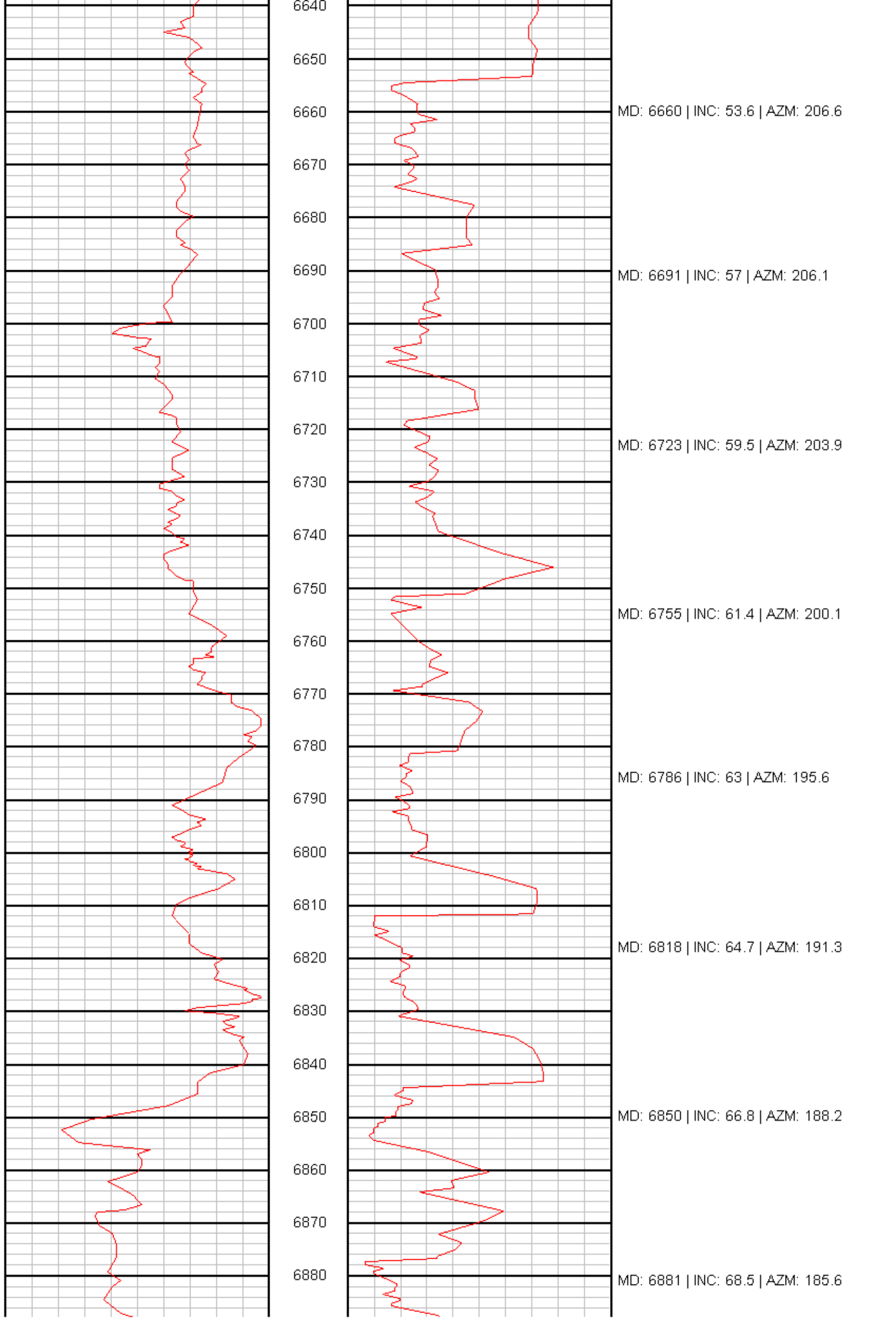


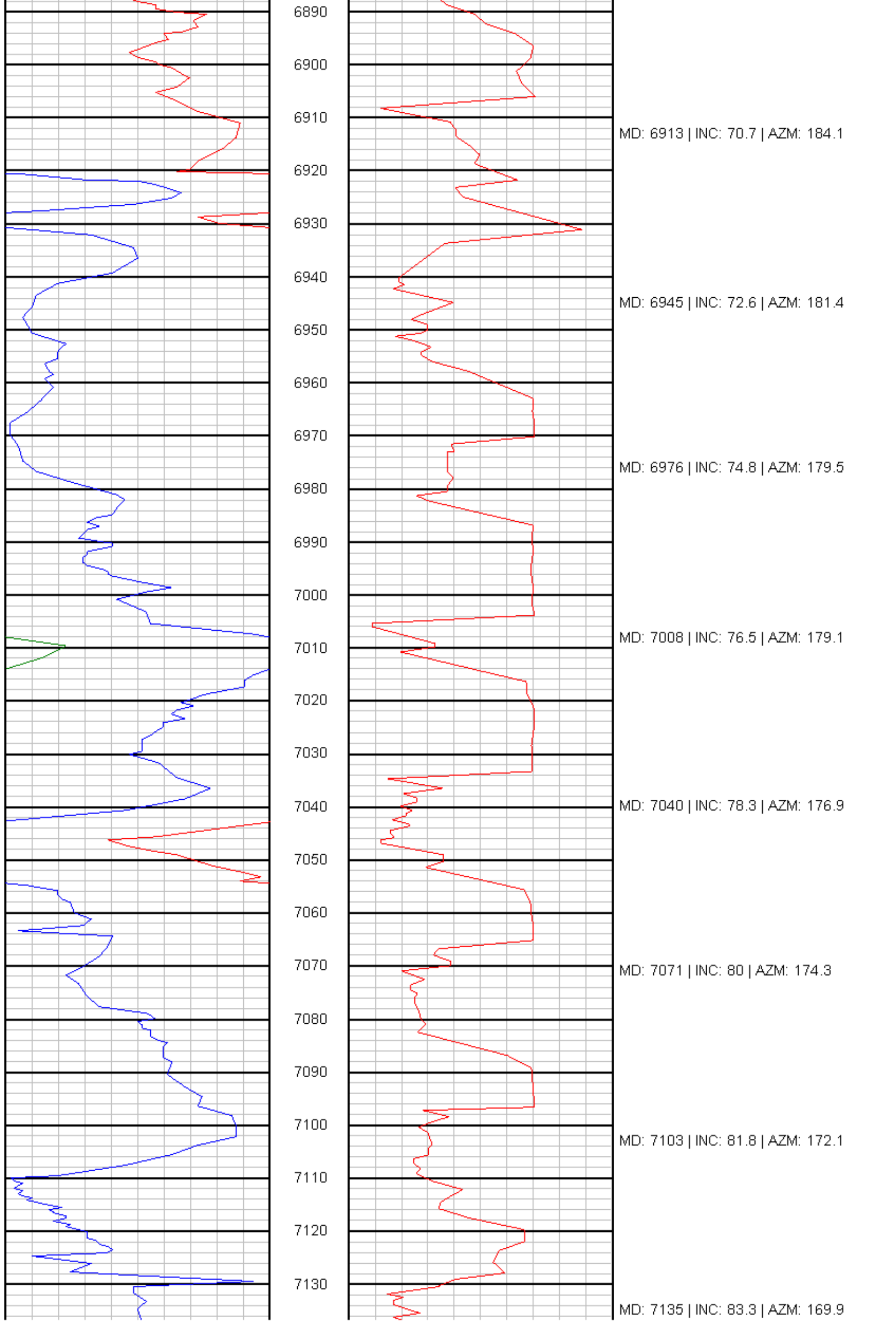
PHOENIX
TECHNOLOGY SERVICES

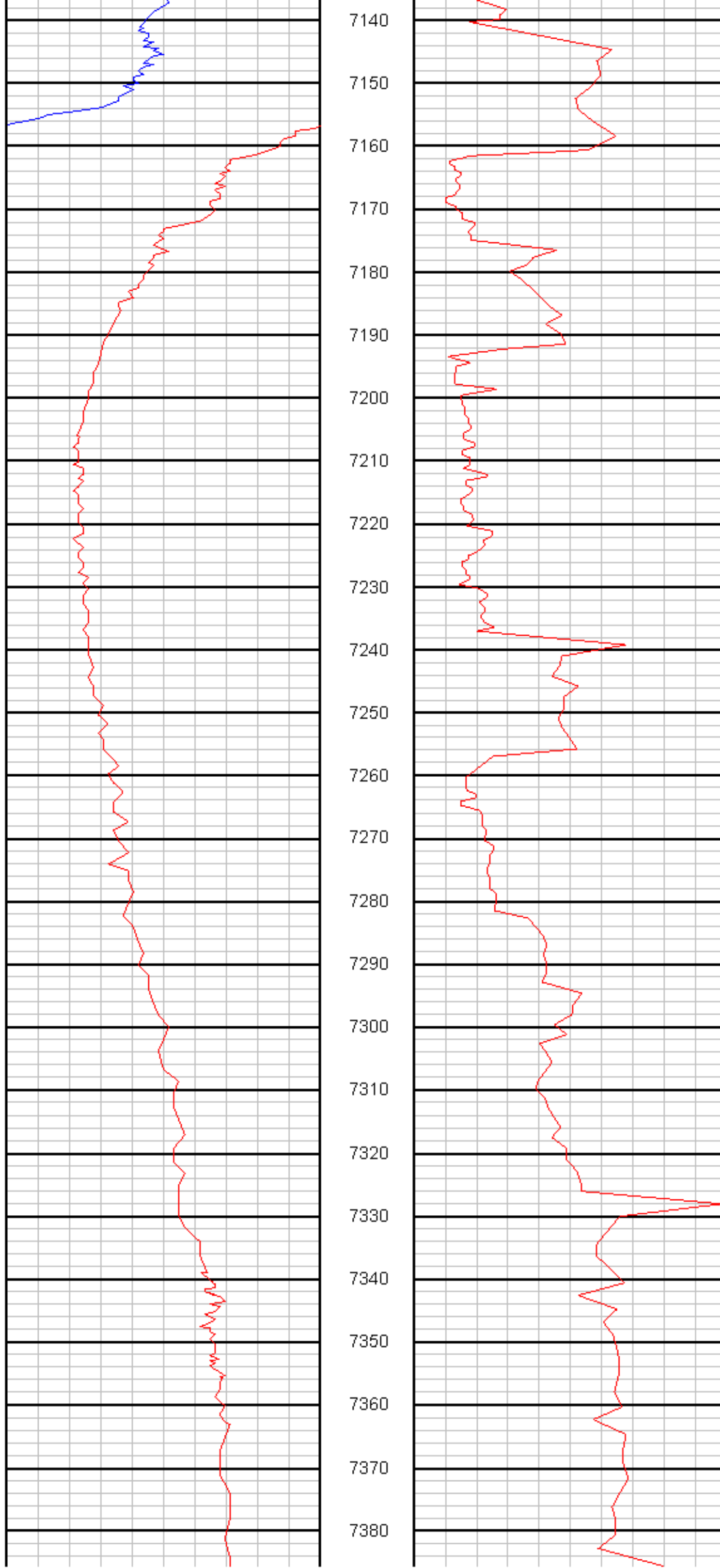










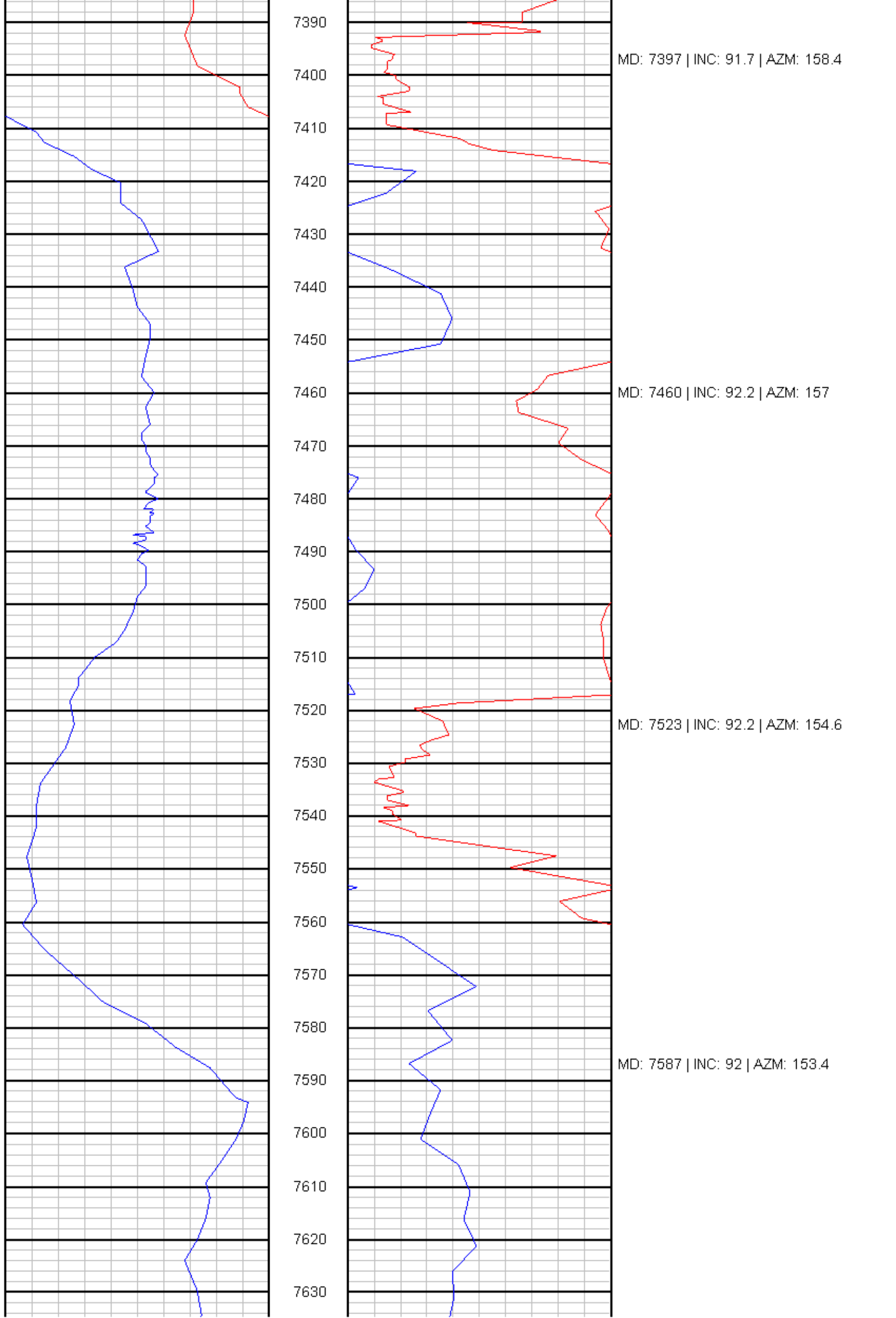


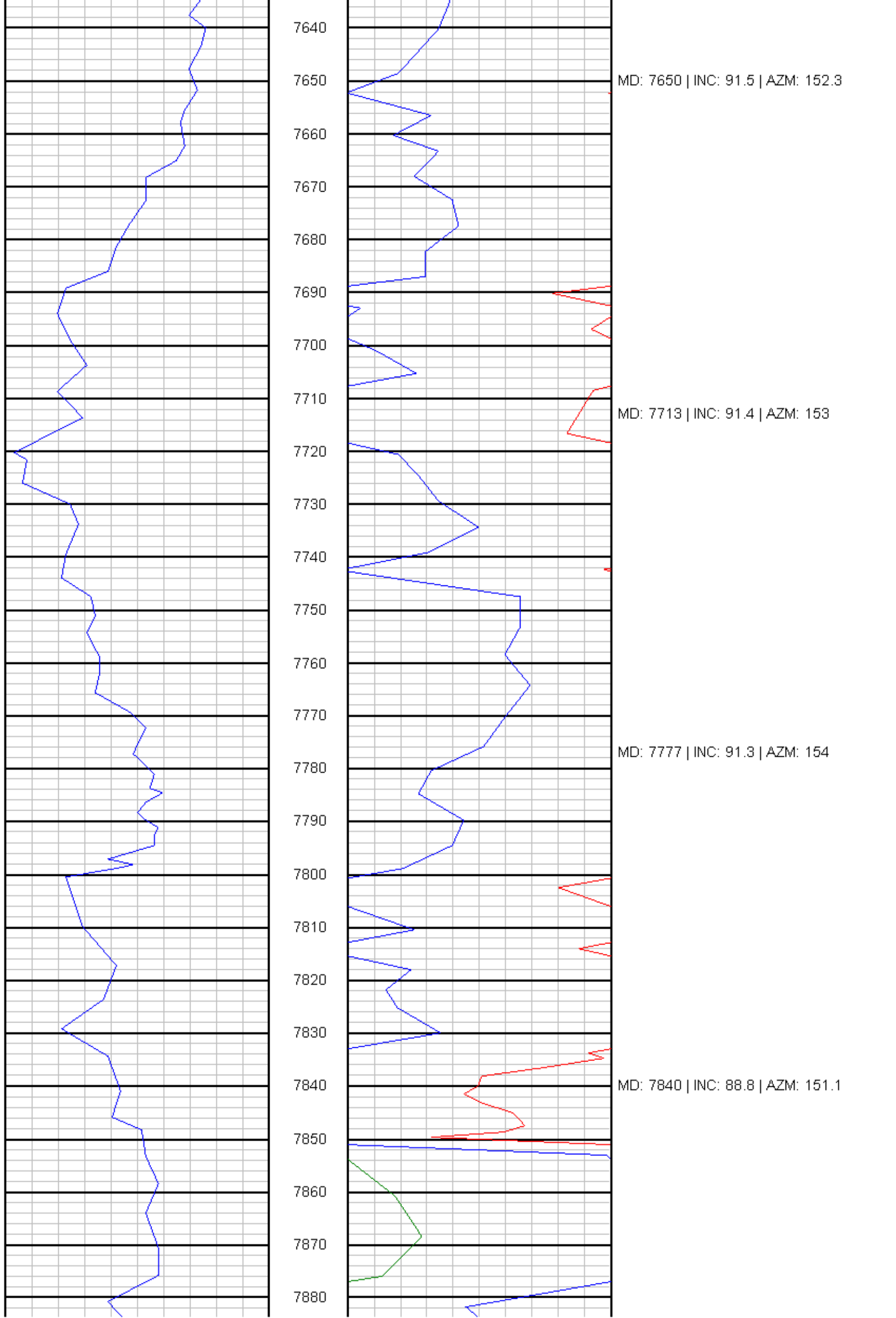
MD: 7166 | INC: 85.4 | AZM: 167.7

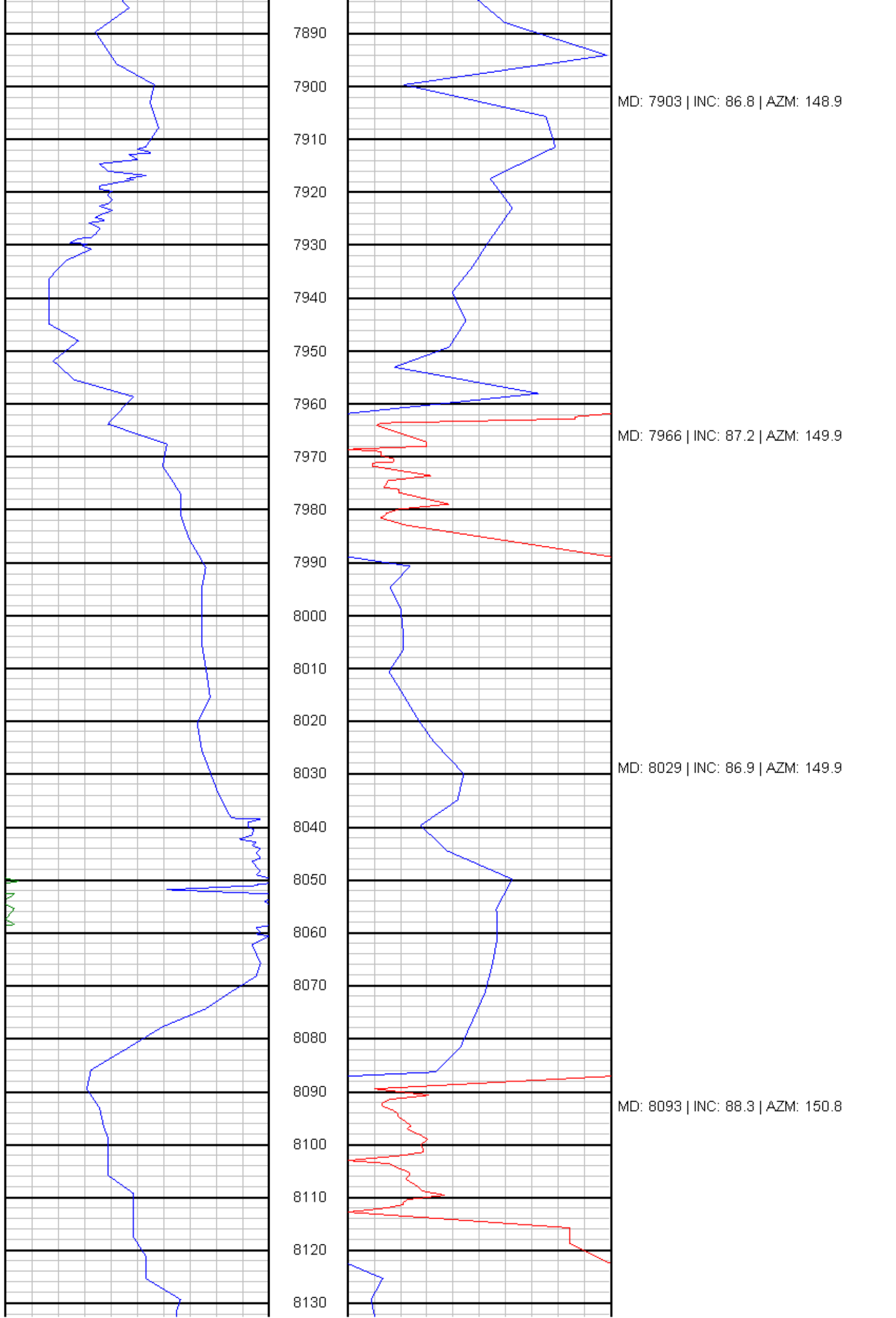
MD: 7198 | INC: 88.3 | AZM: 165.3

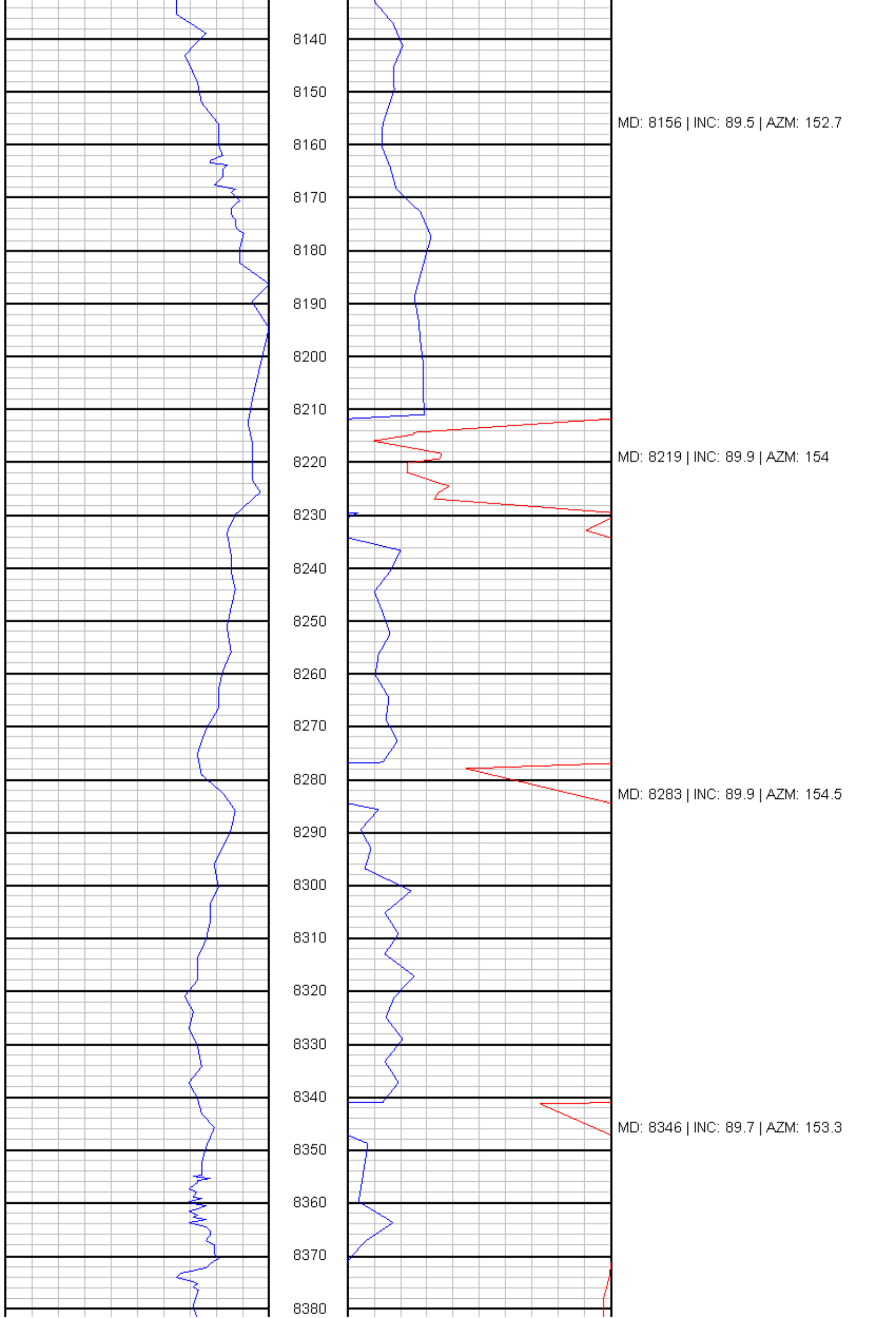
MD: 7270 | INC: 90.5 | AZM: 160.1

MD: 7333 | INC: 90.6 | AZM: 159.7









8140

8150

MD: 8156 | INC: 89.5 | AZM: 152.7

8160

8170

8180

8190

8200

8210

MD: 8219 | INC: 89.9 | AZM: 154

8220

8230

8240

8250

8260

8270

8280

MD: 8283 | INC: 89.9 | AZM: 154.5

8290

8300

8310

8320

8330

8340

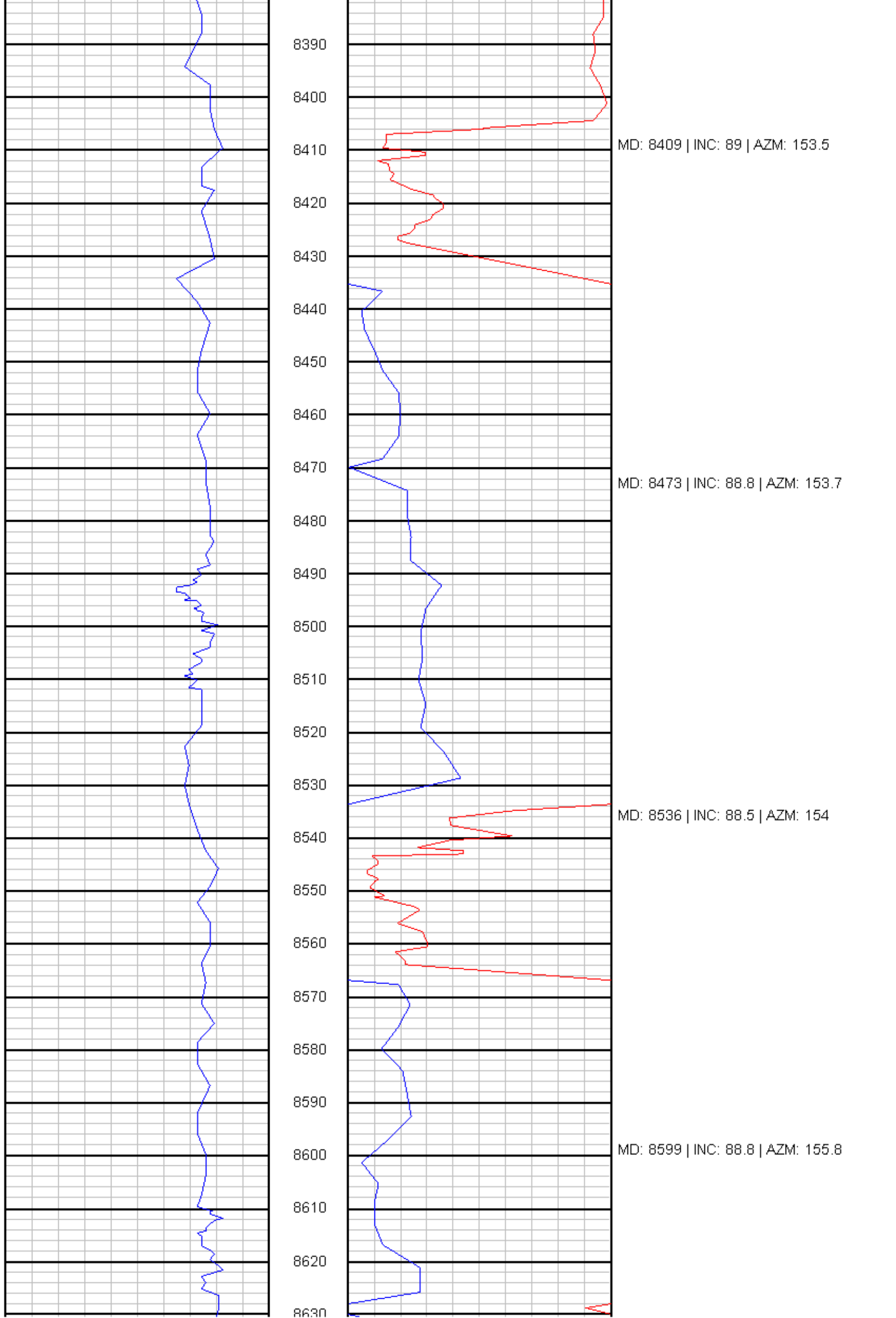
MD: 8346 | INC: 89.7 | AZM: 153.3

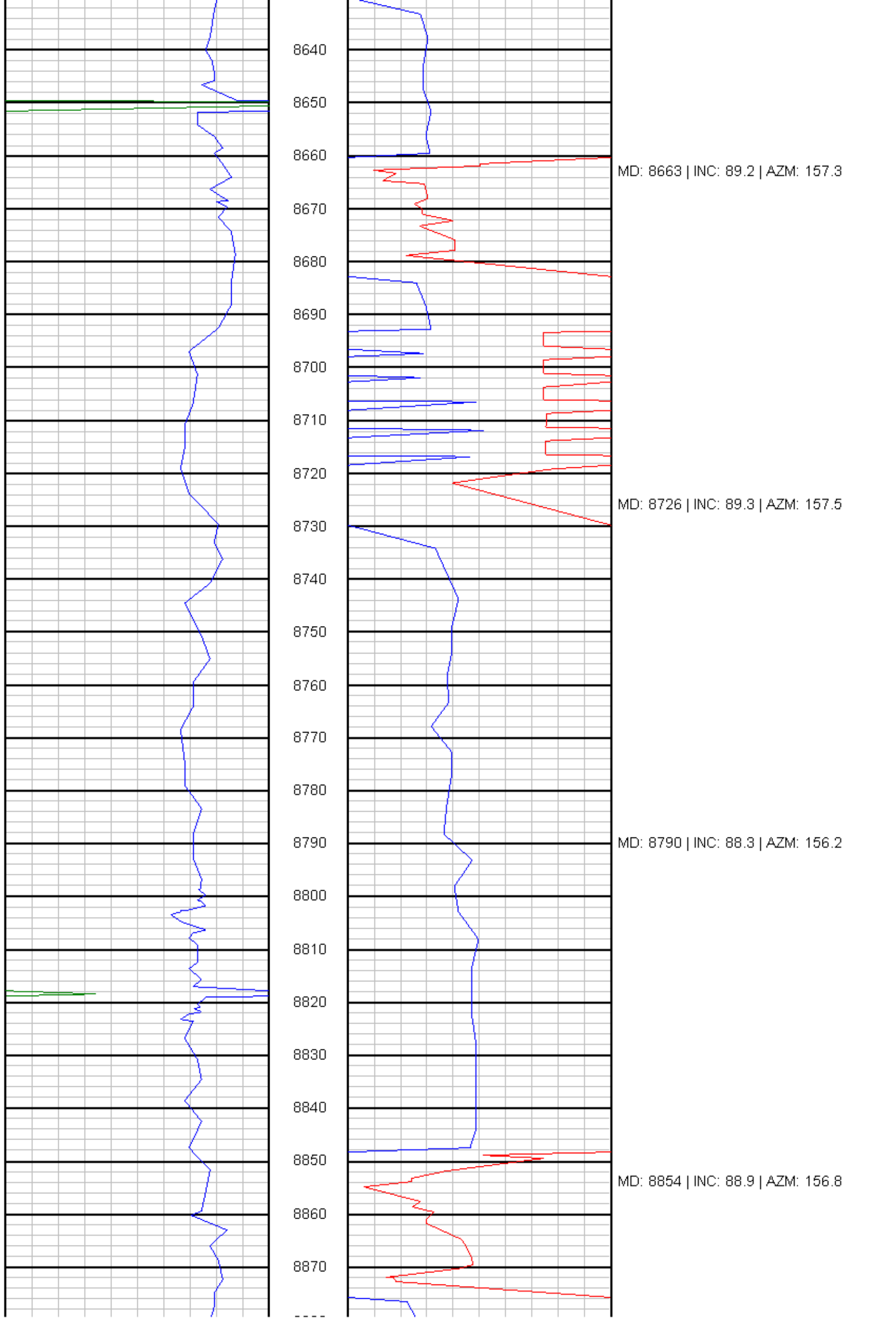
8350

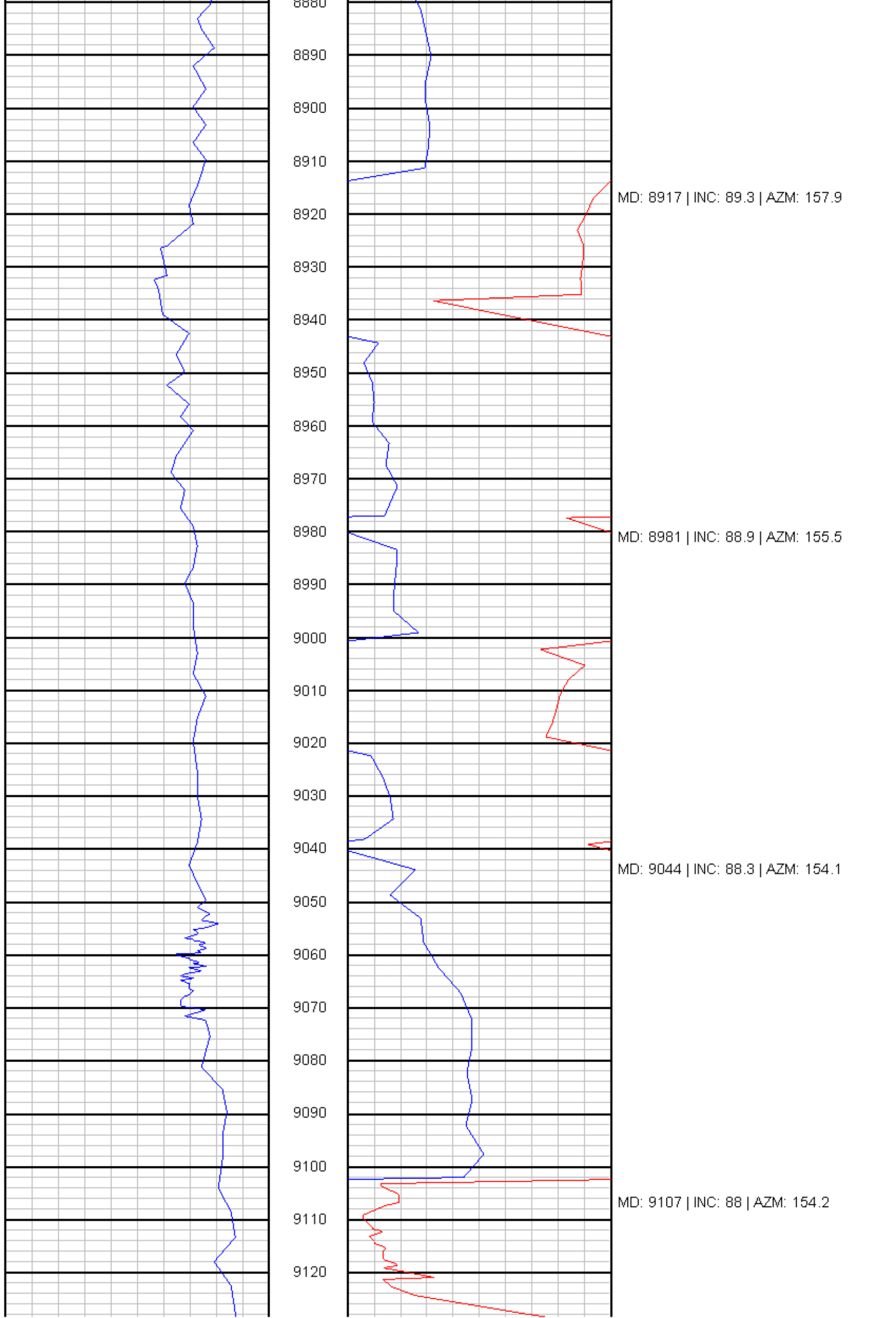
8360

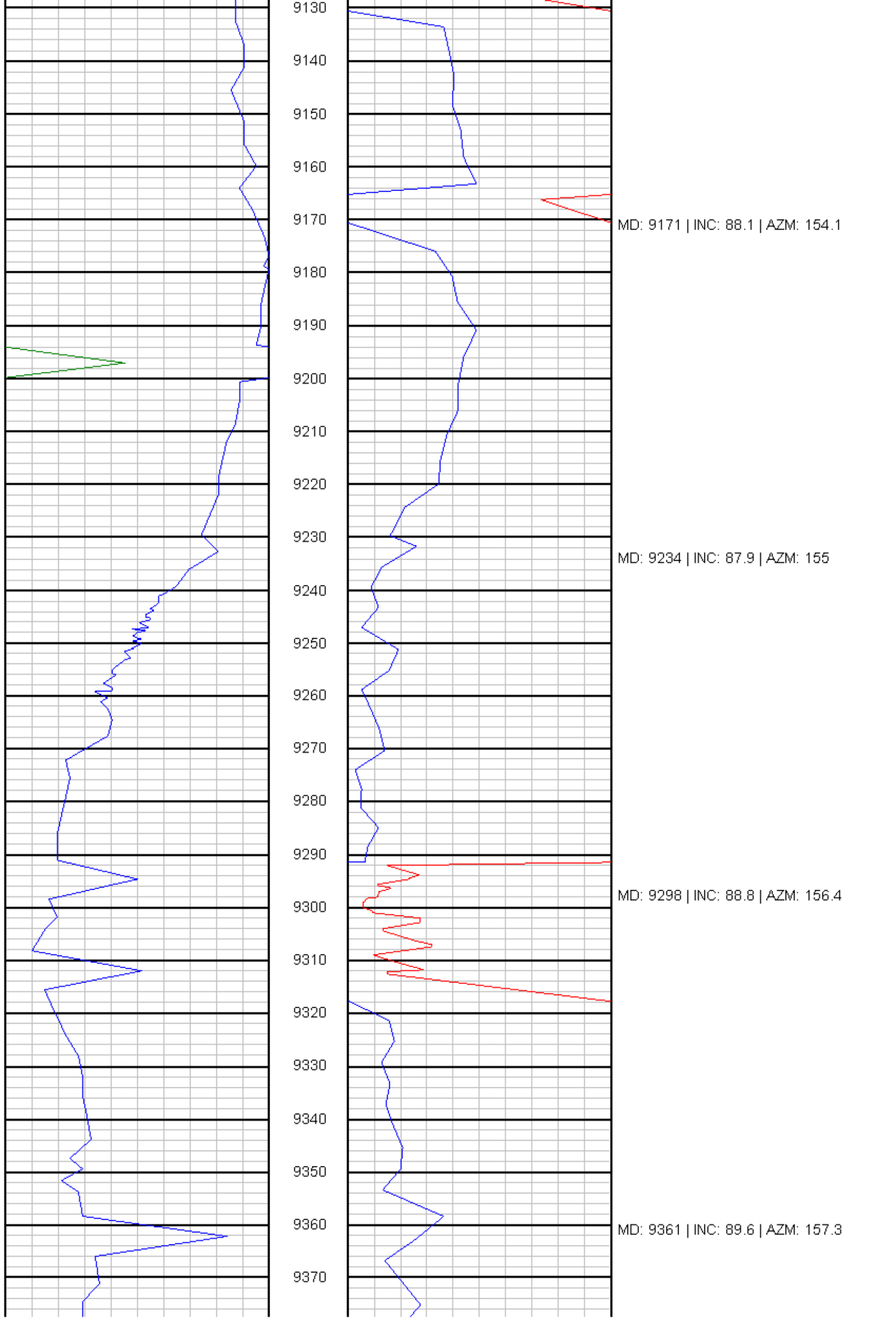
8370

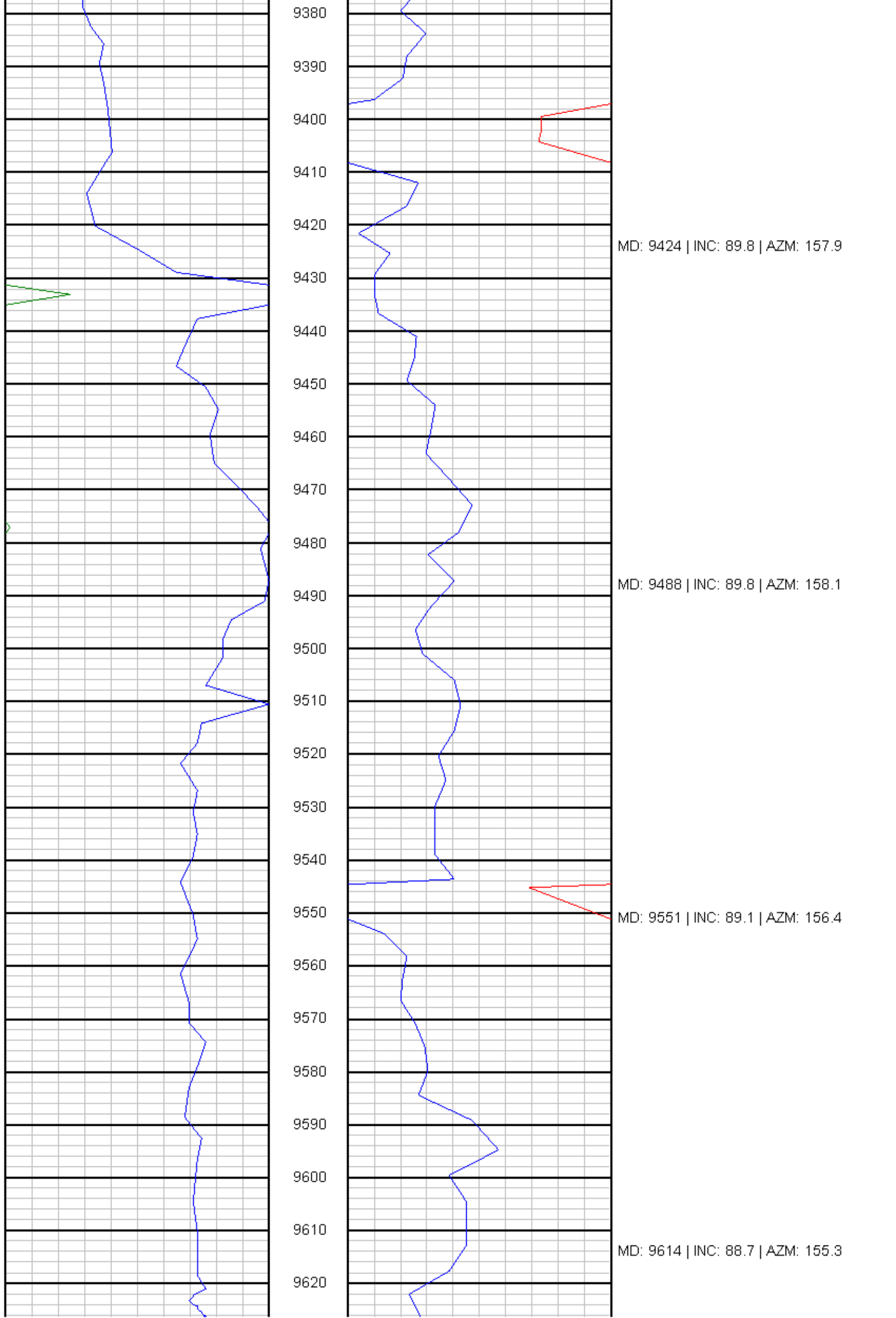
8380











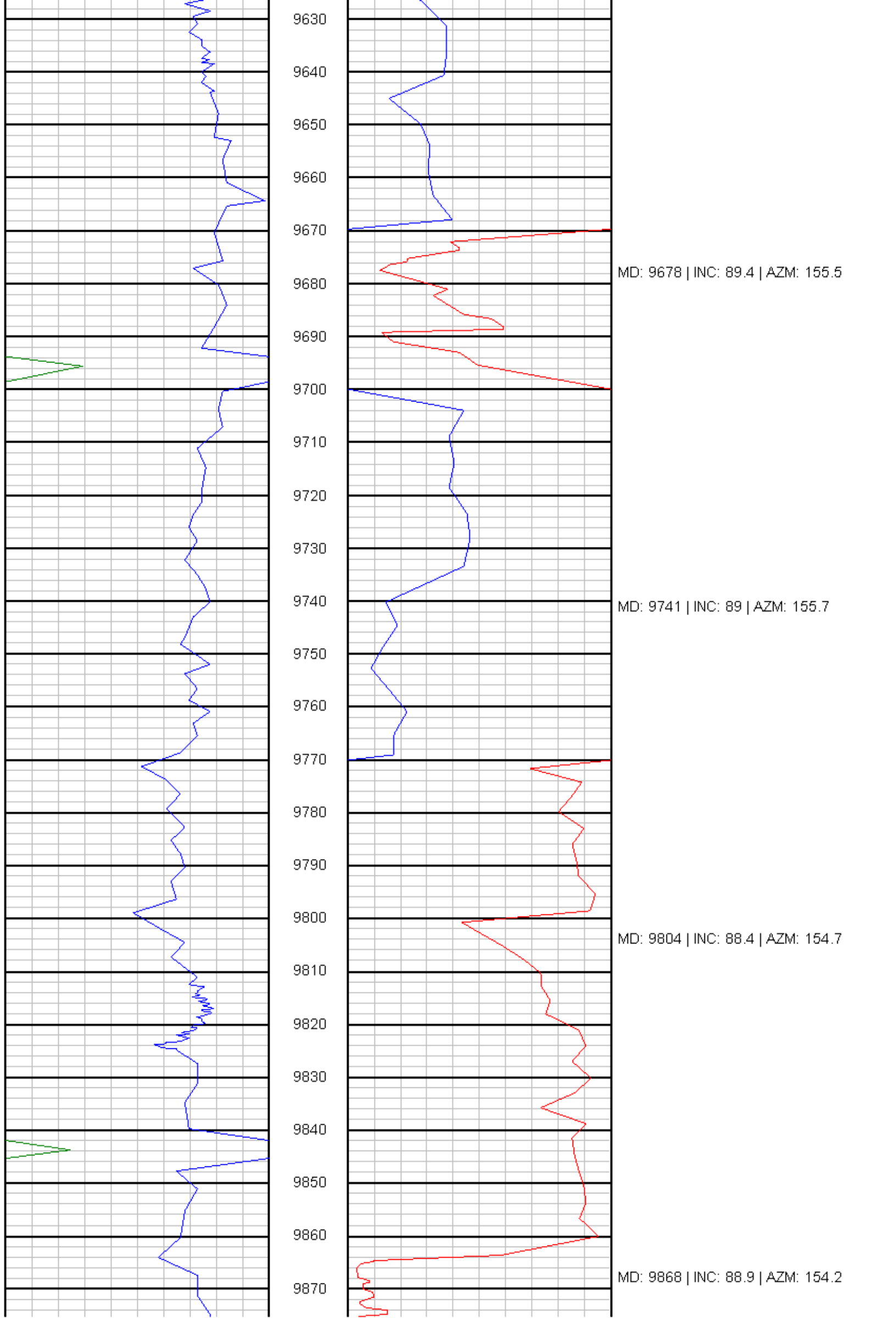
9380
9390
9400
9410
9420
9430
9440
9450
9460
9470
9480
9490
9500
9510
9520
9530
9540
9550
9560
9570
9580
9590
9600
9610
9620

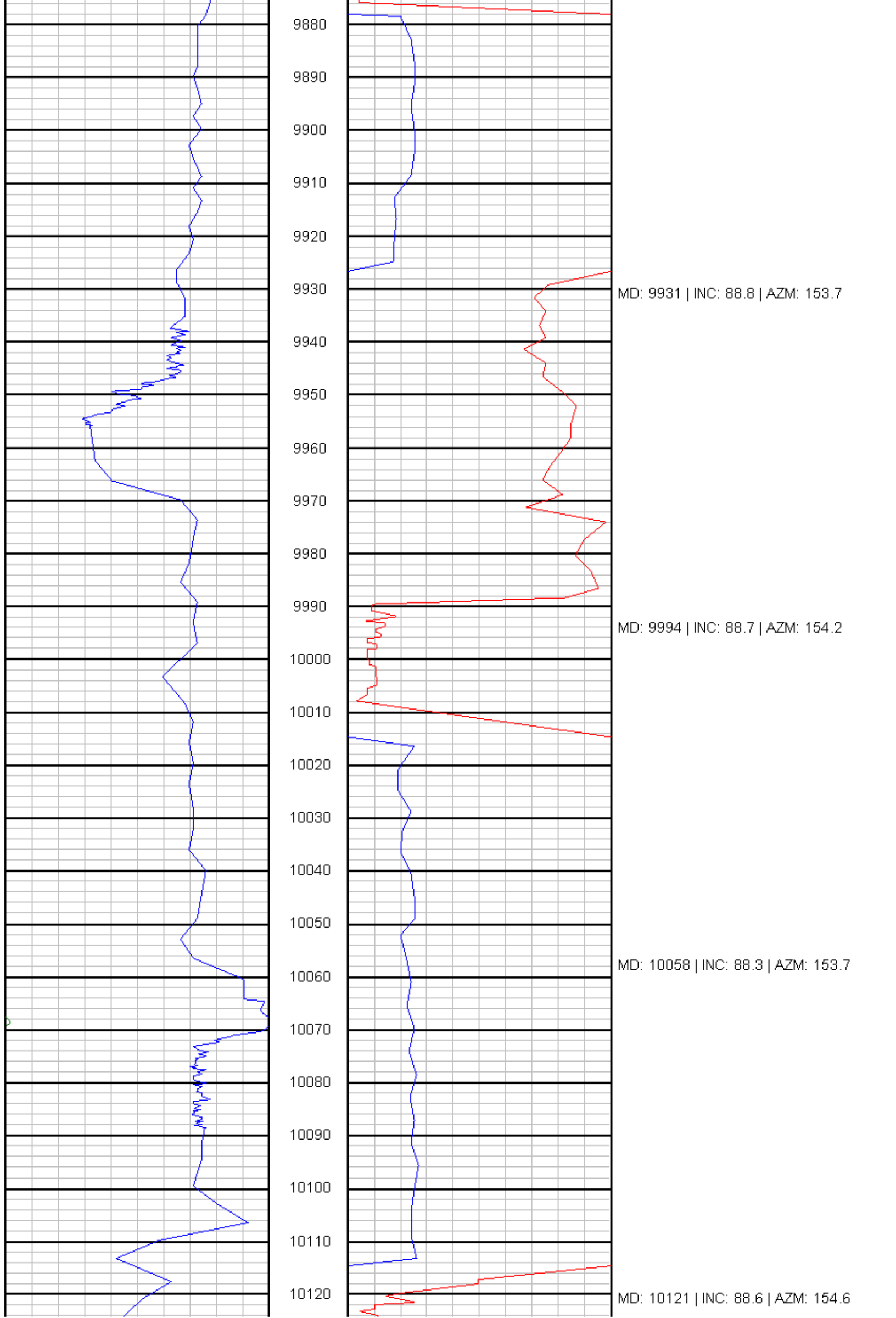
MD: 9424 | INC: 89.8 | AZM: 157.9

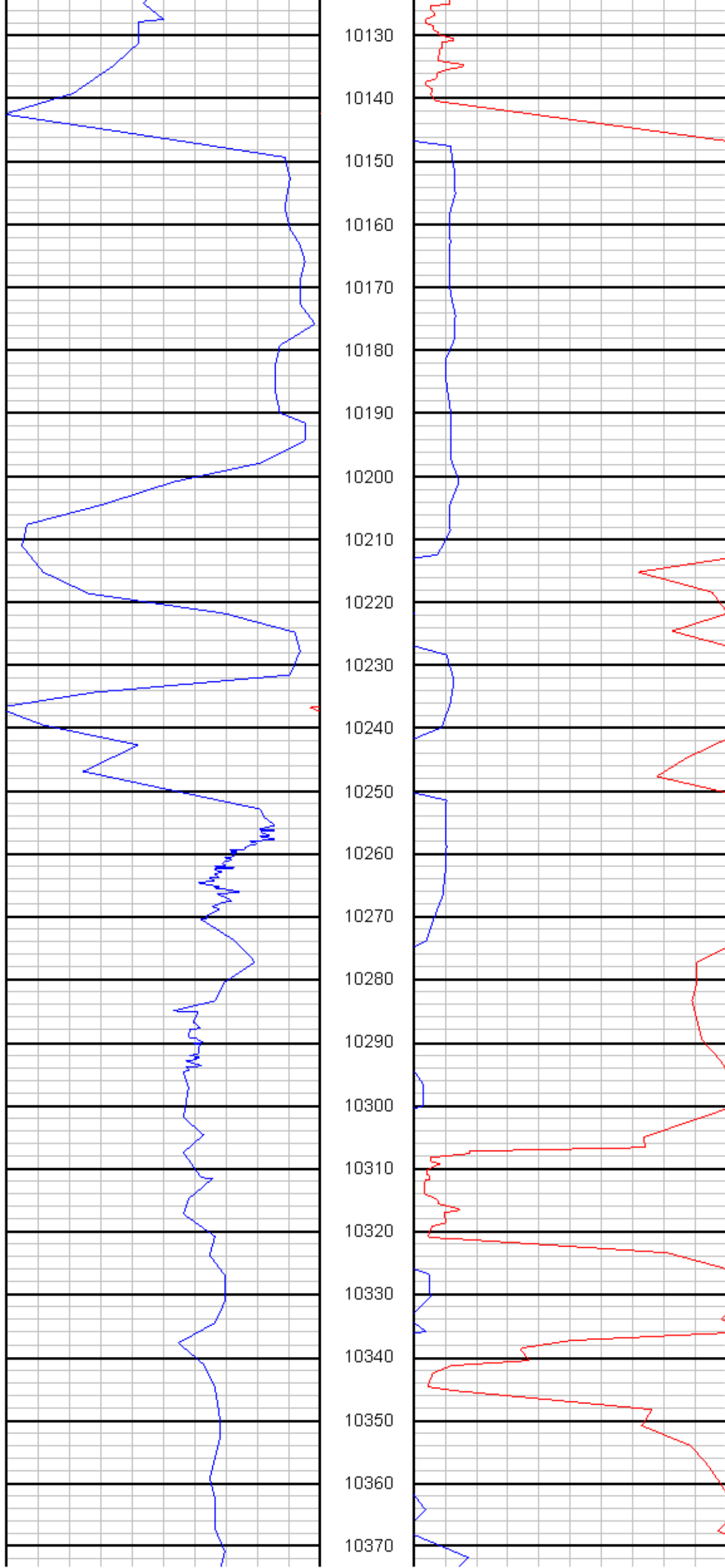
MD: 9488 | INC: 89.8 | AZM: 158.1

MD: 9551 | INC: 89.1 | AZM: 156.4

MD: 9614 | INC: 88.7 | AZM: 155.3





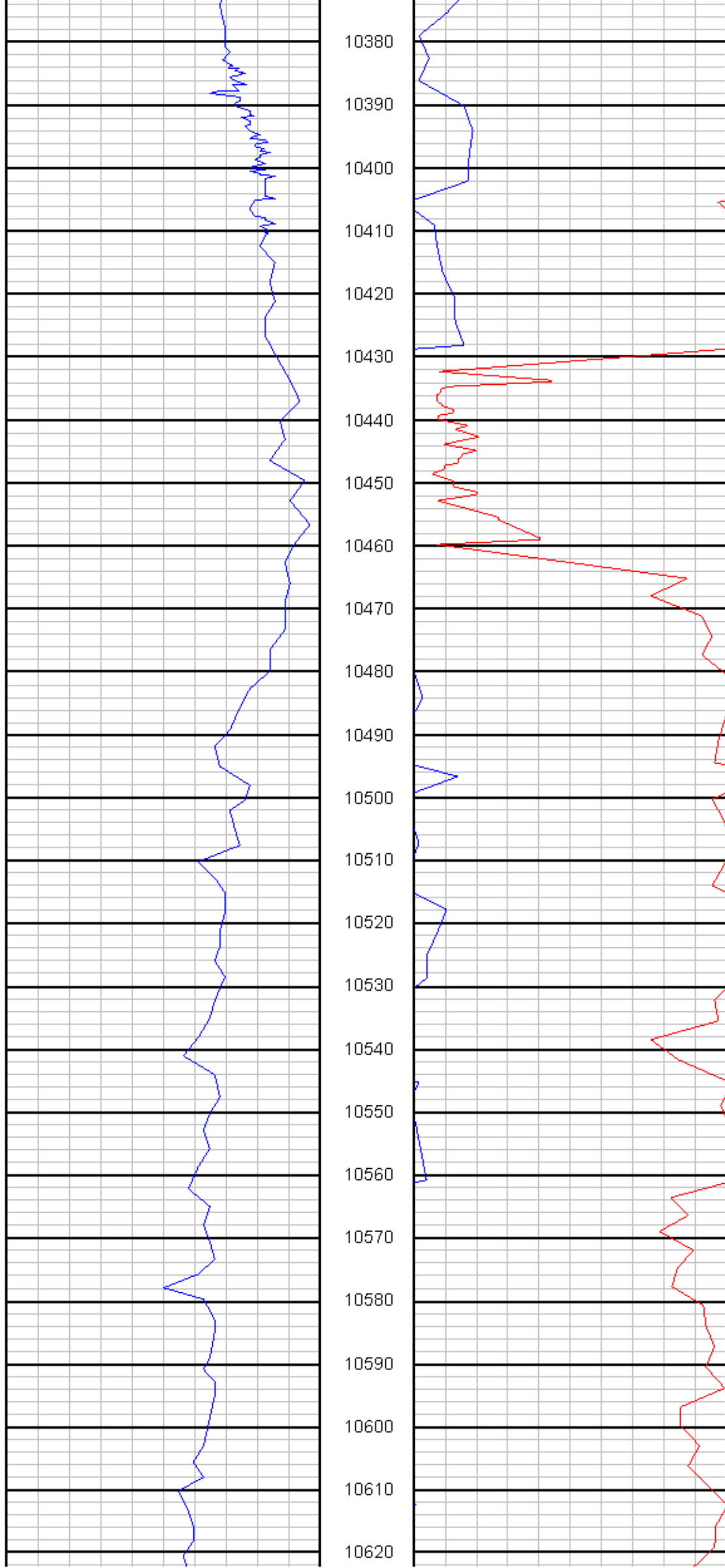


MD: 10184 | INC: 88.8 | AZM: 154.7

MD: 10247 | INC: 88.8 | AZM: 154.2

MD: 10311 | INC: 88.6 | AZM: 153.6

MD: 10374 | INC: 88.1 | AZM: 152.9



MD: 10437 | INC: 89.1 | AZM: 153.6

MD: 10501 | INC: 90.2 | AZM: 152.5

MD: 10564 | INC: 89.8 | AZM: 151.9

