

RADIAL BOND LOG
GAMMA RAY
VDL,CCL

Company ANTERO RESOURCES CORPORATION
 Well OXFORD 97 AHS
 Field MARCELLUS
 County DODDRIDGE
 State WV Country USA

Company ANTERO RESOURCES CORPORATION
 Well OXFORD 97 AHS
 Field MARCELLUS
 County DODDRIDGE
 State WV Country USA

Location: API #: 4701706481
 AFE A06739
 SEC TWP RGE
 Permanent Datum Elevation
 Log Measured From
 Drilling Measured From
 Other Services
 Elevation
 K.B.
 D.F.
 G.L.

Date	8-29-19	
Run Number	1	
Depth Driller	16725'	
Depth Logger	7512'	
Bottom Logged Interval	7512'	
Top Log Interval	SURFACE	
Open Hole Size	N/A	
Type Fluid	WATER	
Density / Viscosity	N/A	
Max. Recorded Temp.	136.5 DEG	
Estimated Cement Top	581'	
Time Well Ready	N/A	
Time Logger on Bottom	14:15	
Equipment Number	624874	
Location	BRIDGEPORT	
Recorded By	P DAVIDSON	
Witnessed By	DAVE GANDEE	
Borehole Record		
Run Number	Bit	From To
	5.5	23 16725'
Tubing Record		
	Size	Weight
	5.5	23
	From	To
	16725'	0
Casing Record	Size	Wgt/Ft
Surface String		
Prot. String		
Production String		
Liner		

<<< Fold Here >>>

All interpretations are opinions based on inferences from electrical or other measurements and we cannot and do not guarantee the accuracy or correctness of any interpretation, and we shall not, except in the case of gross or willful negligence on our part, be liable or responsible for any loss, costs, damages, or expenses incurred or sustained by anyone resulting from any interpretation made by any of our officers, agents or employees. These interpretations are also subject to our general terms and conditions set out in our current Price Schedule.

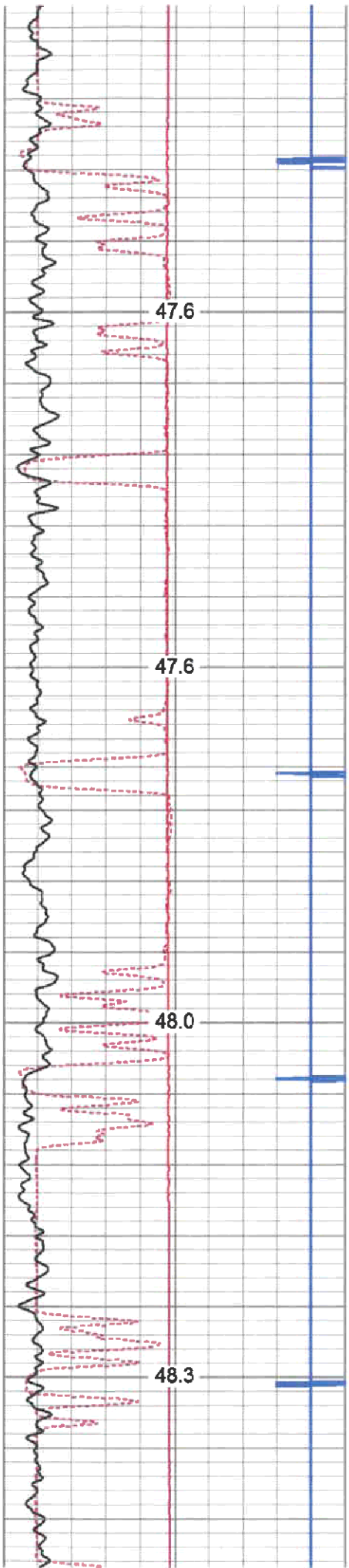
Comments

MARKER JOINT @ 6525'-6547'
 LOG TD 7512'
 CEMENT TOP @ 581'
 LOGGED UNDER 1500 PSI.

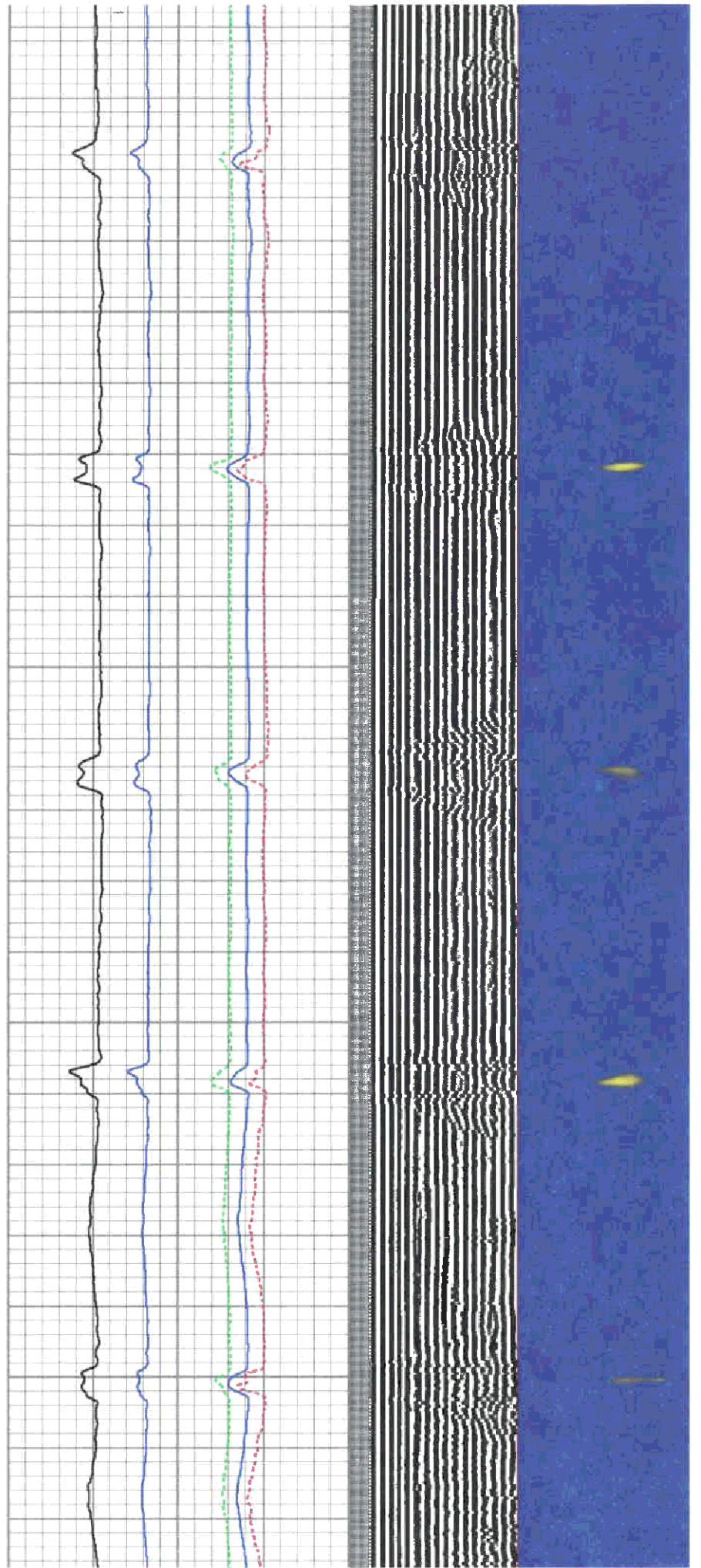
THANK YOU FOR CHOOSING KLX ENERGY

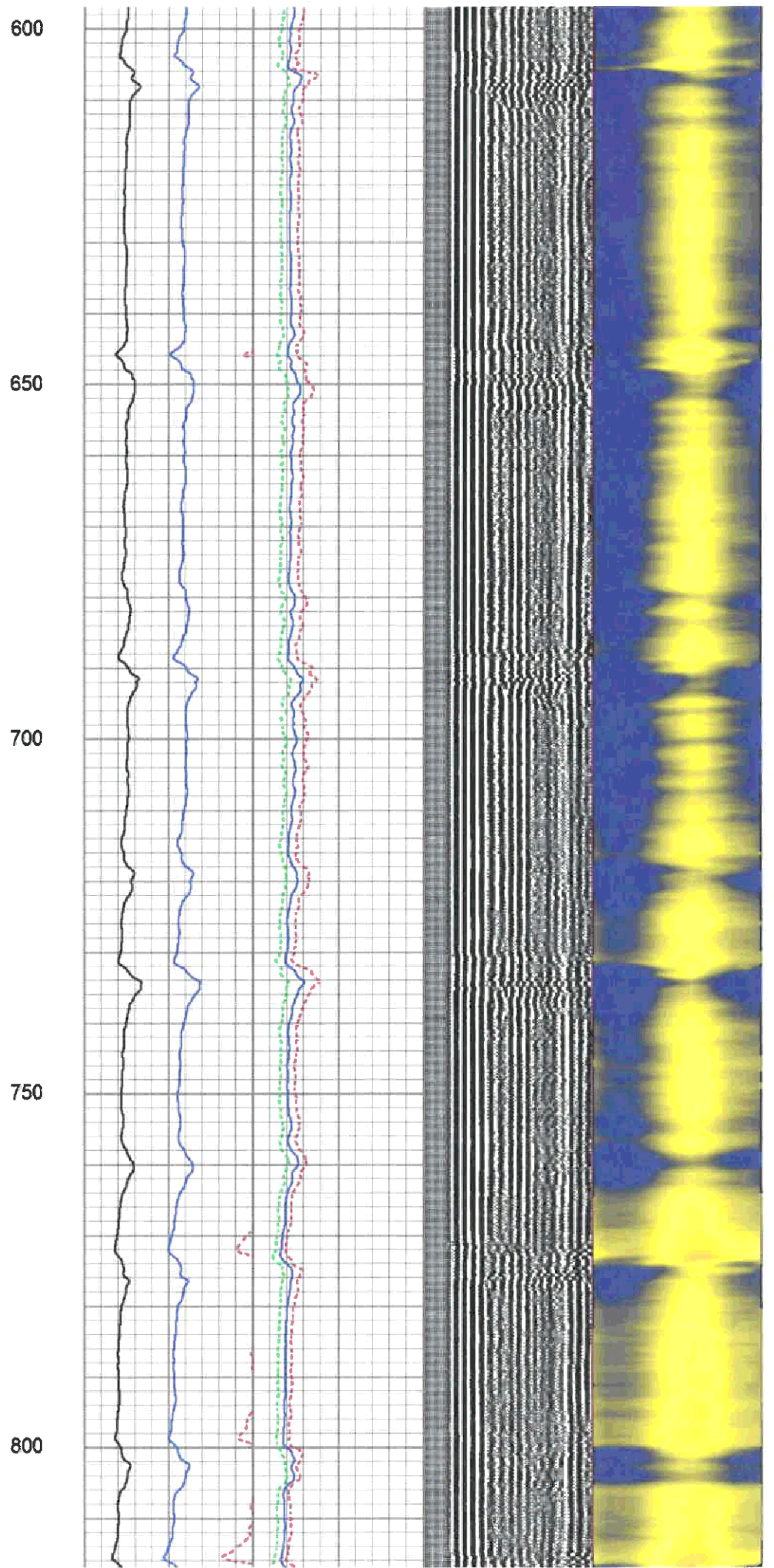
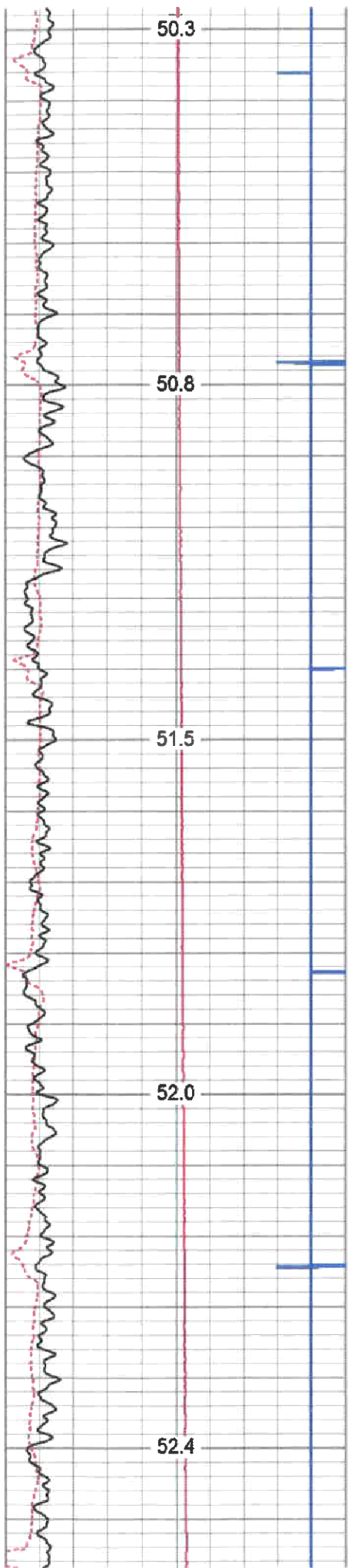


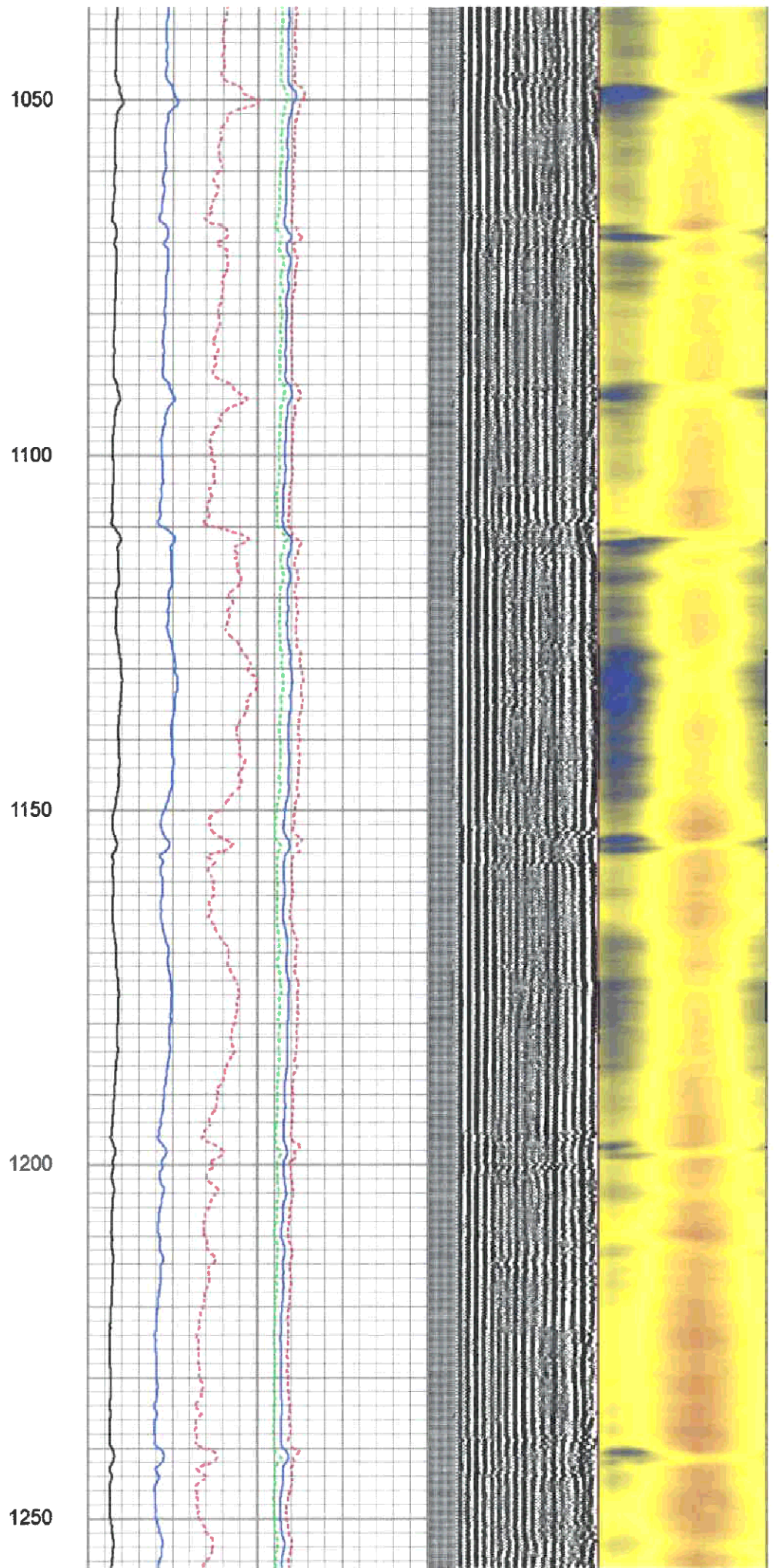
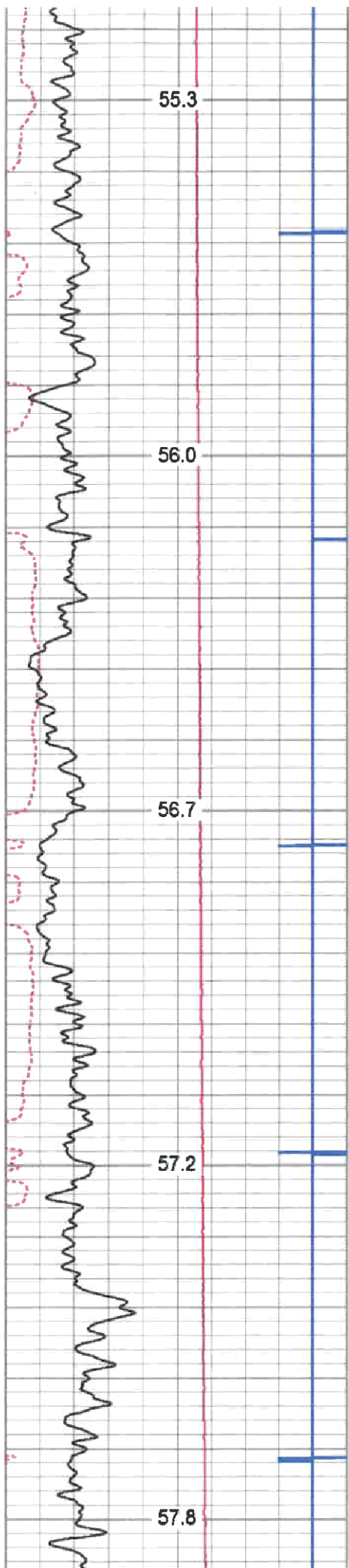
MAIN PASS 1500 PSI.

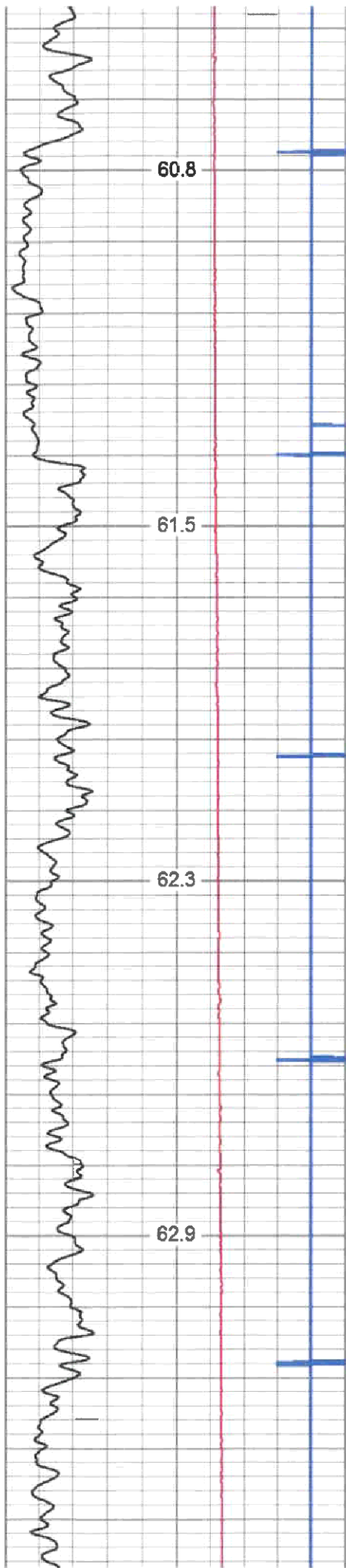


200
250
300
350







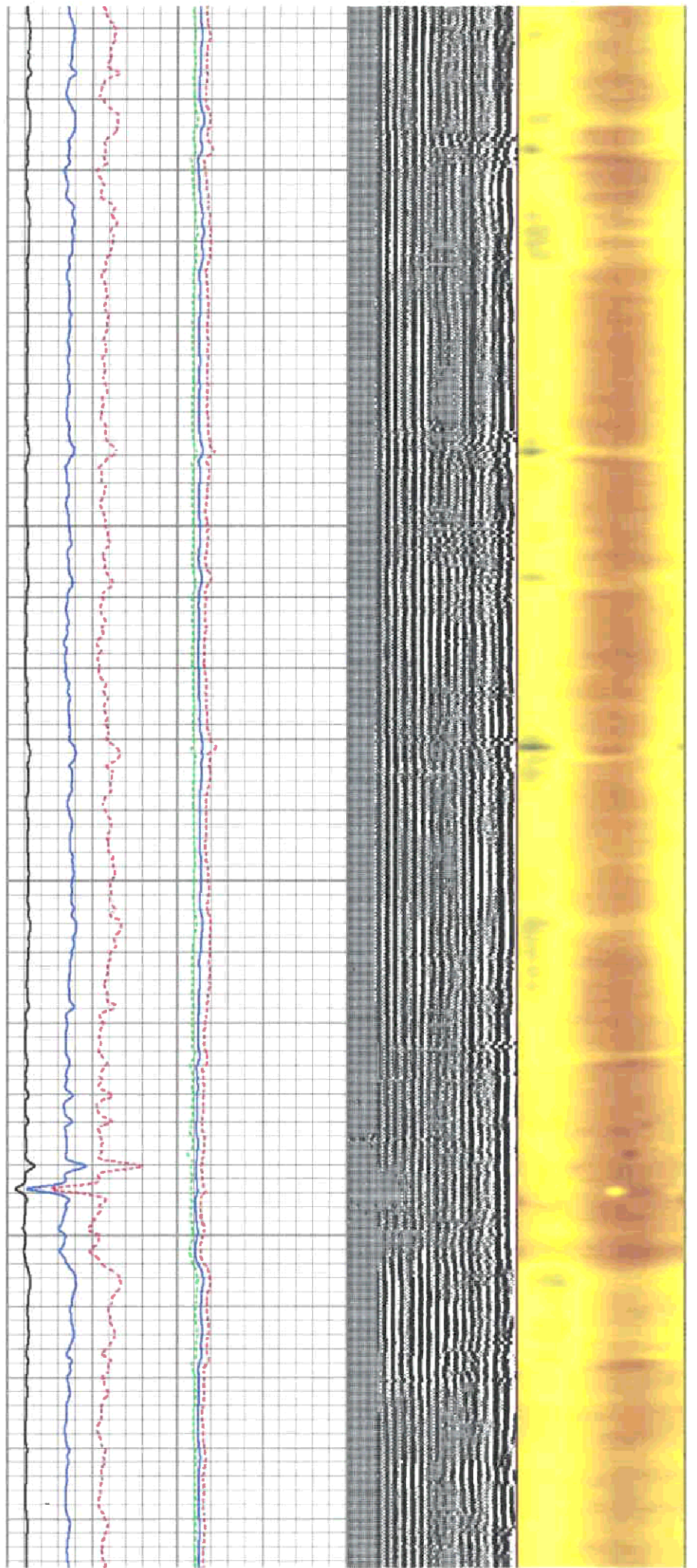


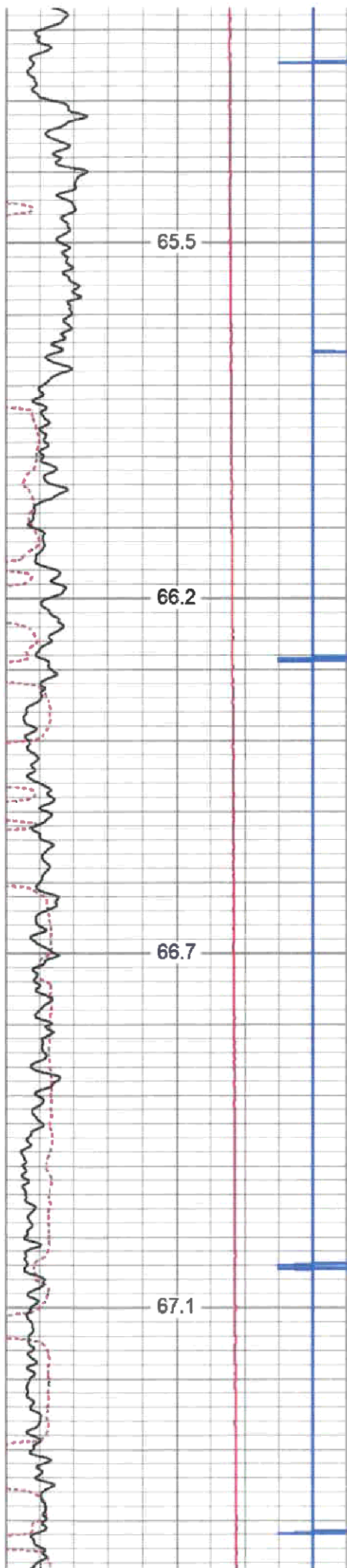
1500

1550

1600

1650



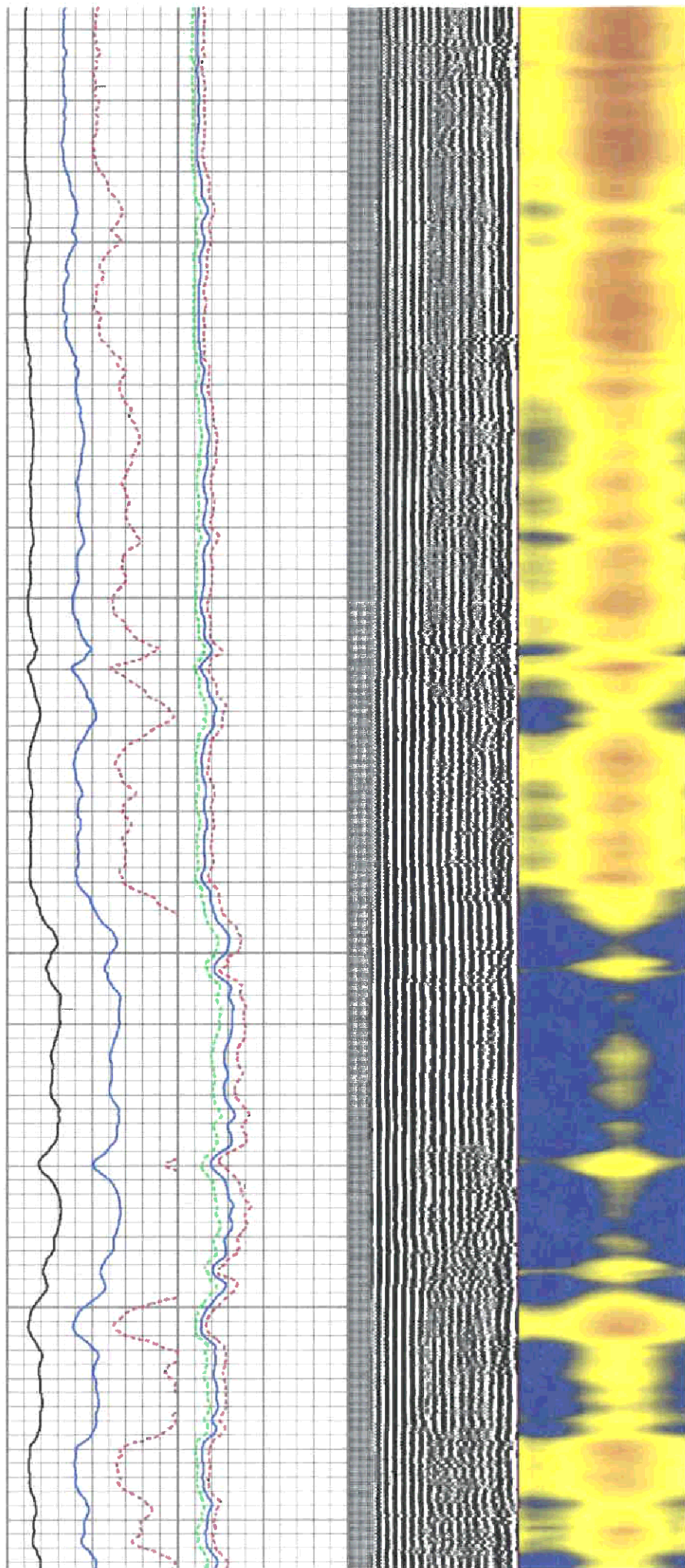


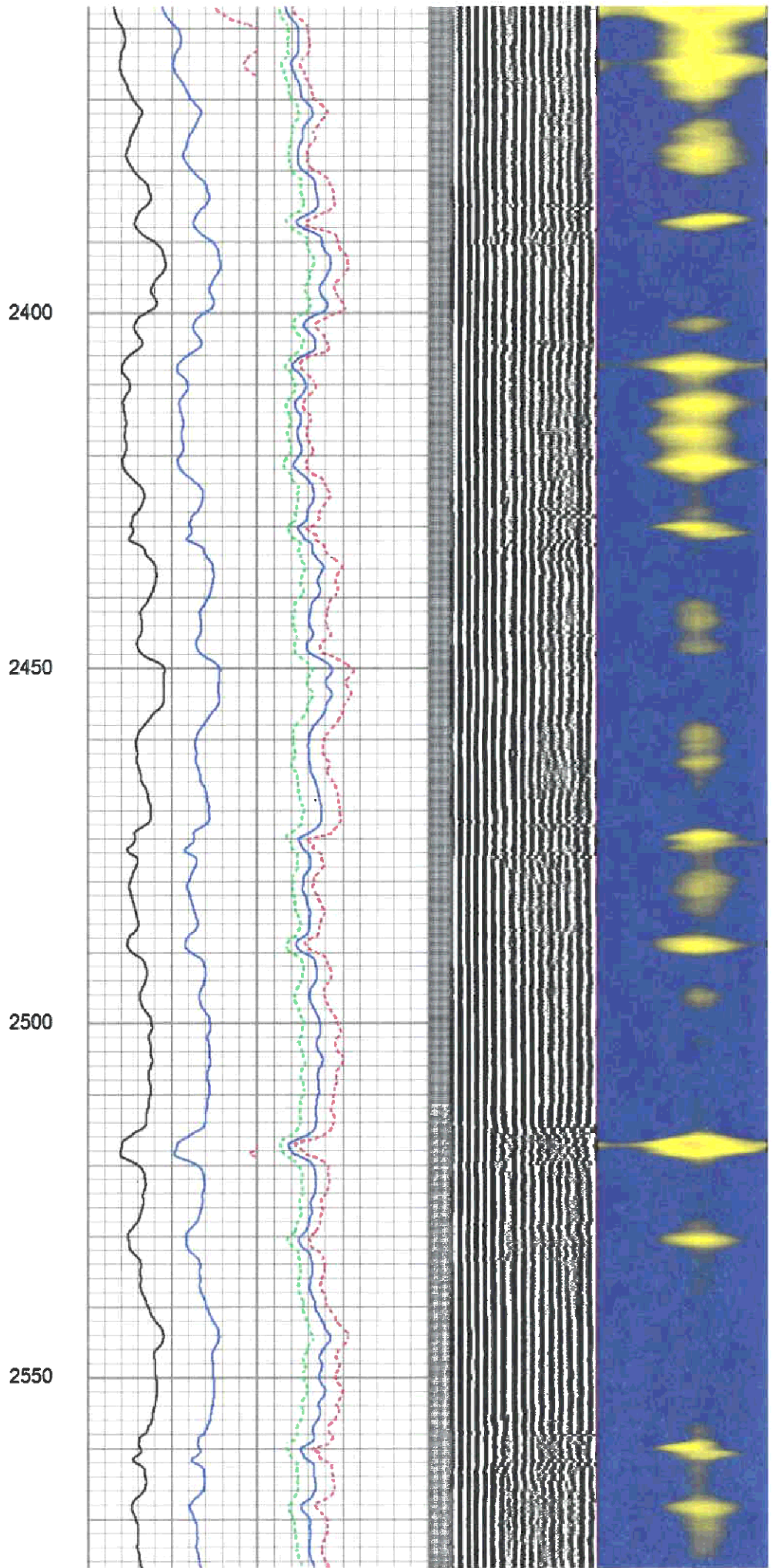
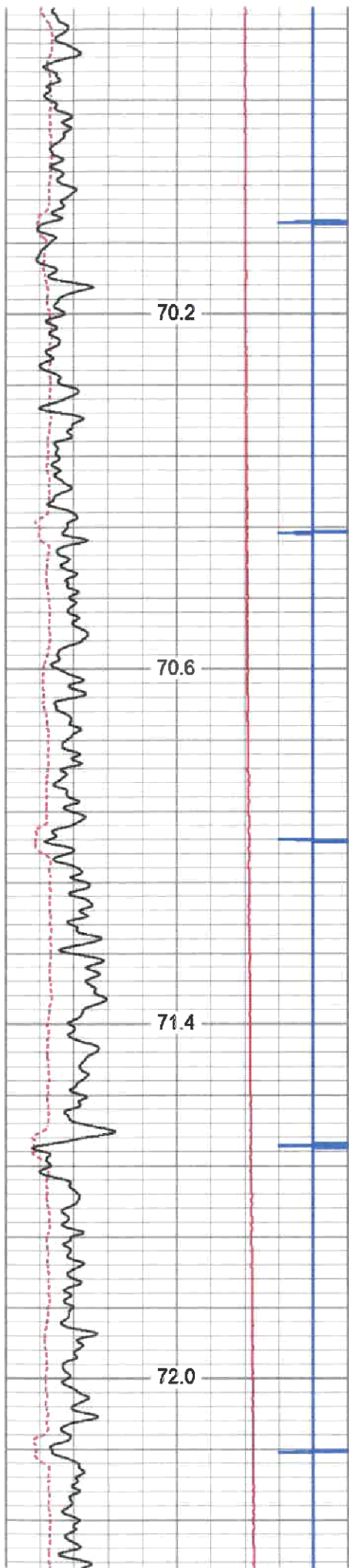
1950

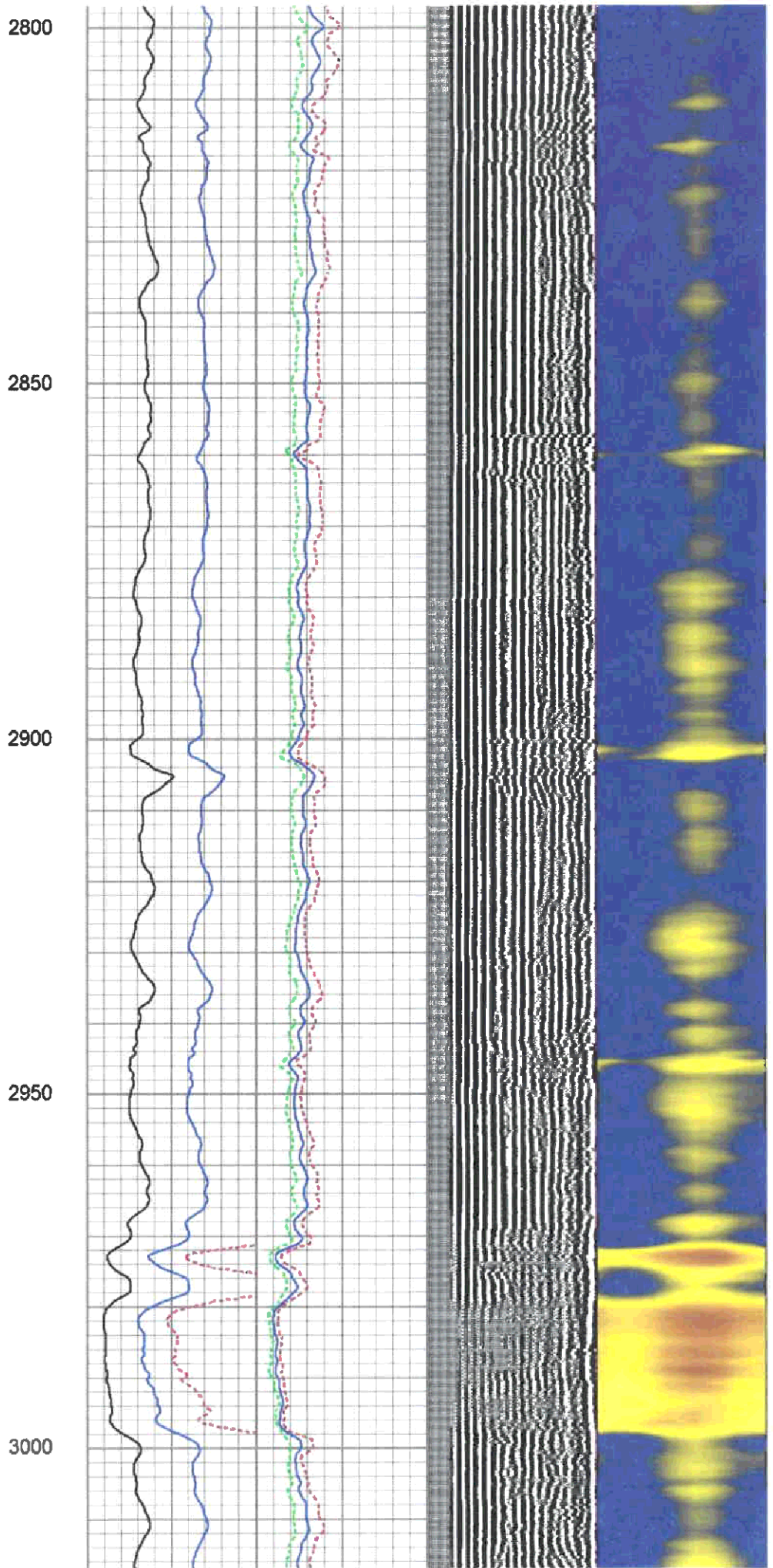
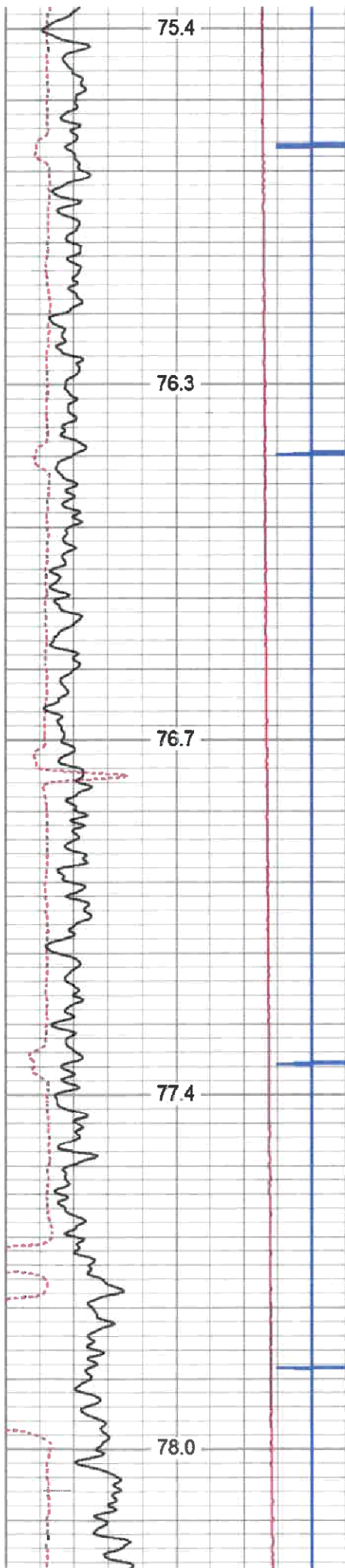
2000

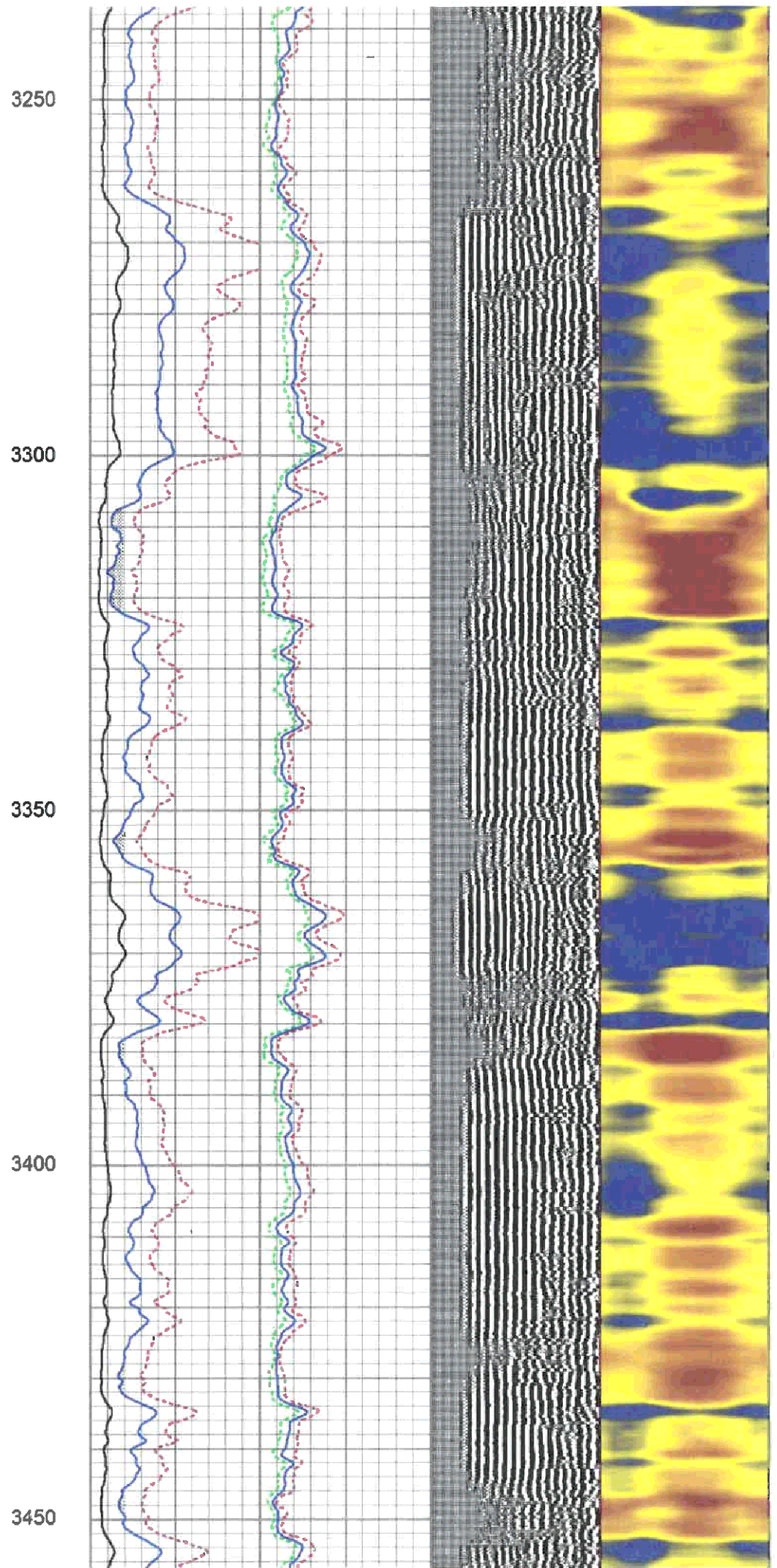
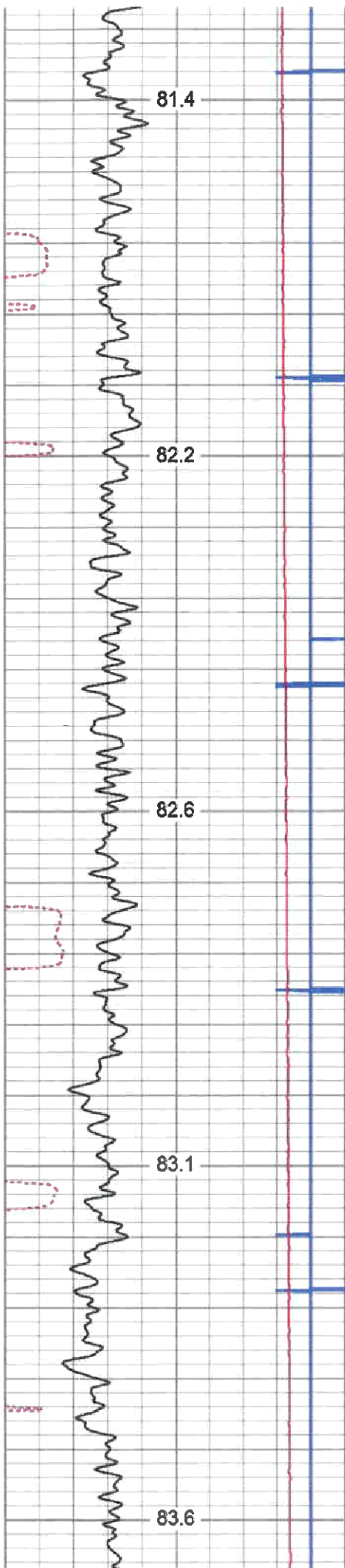
2050

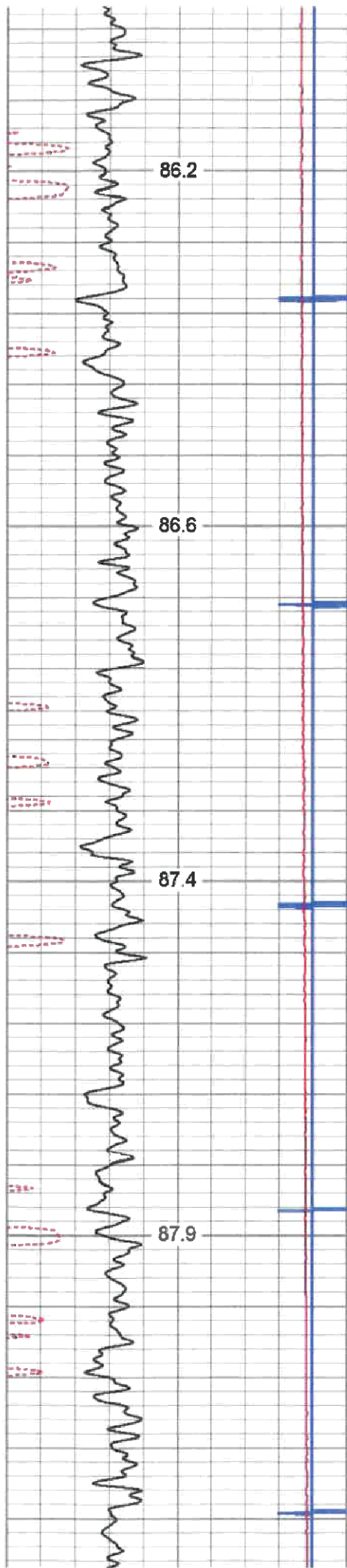
2100









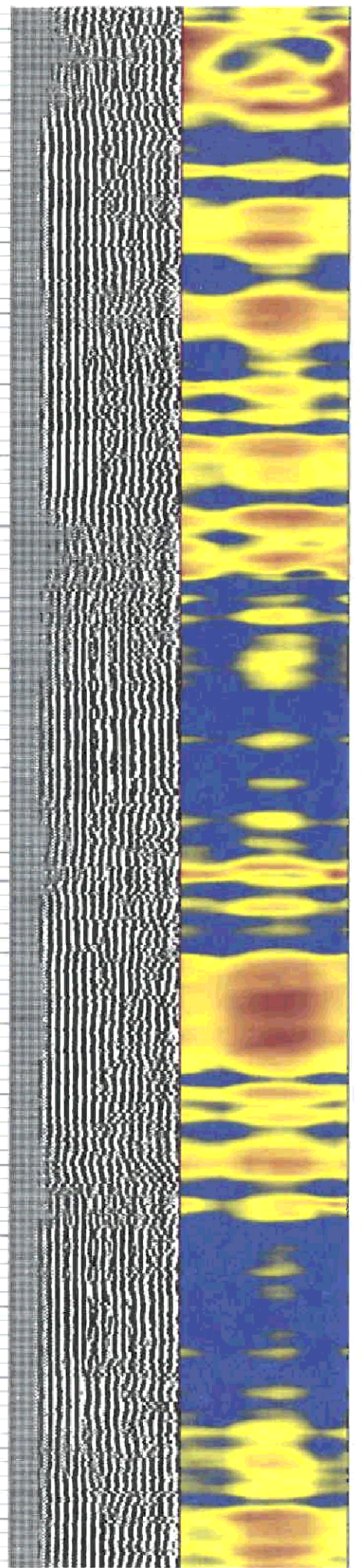
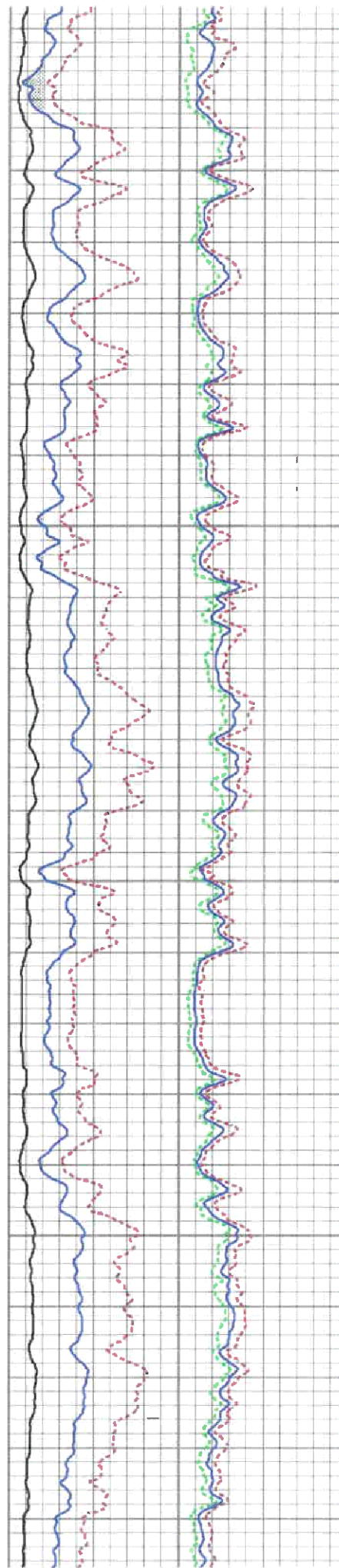


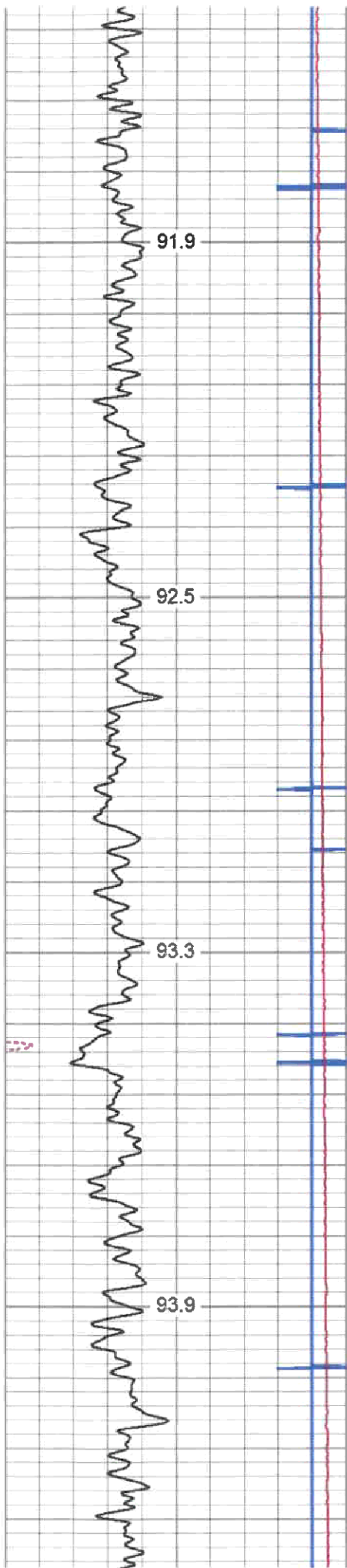
3700

3750

3800

3850



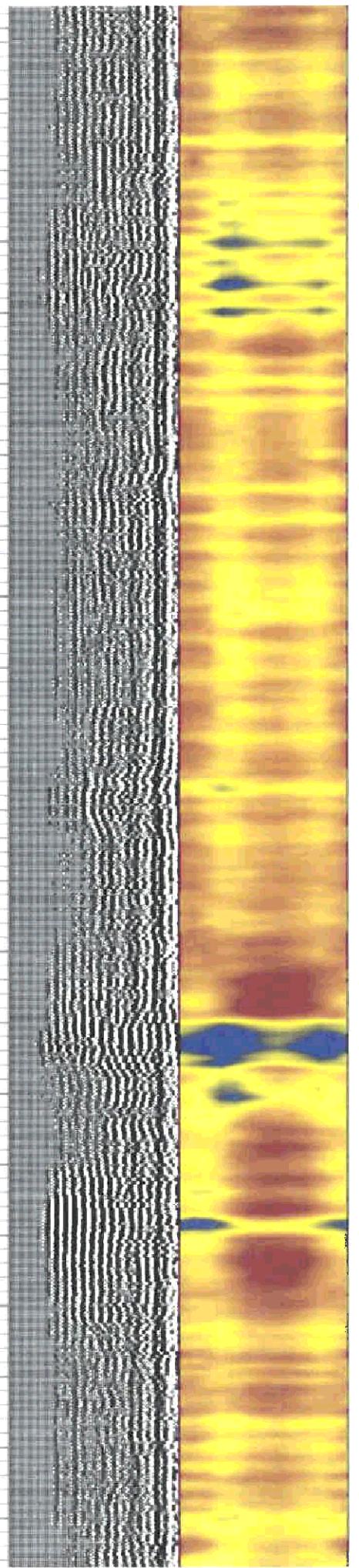
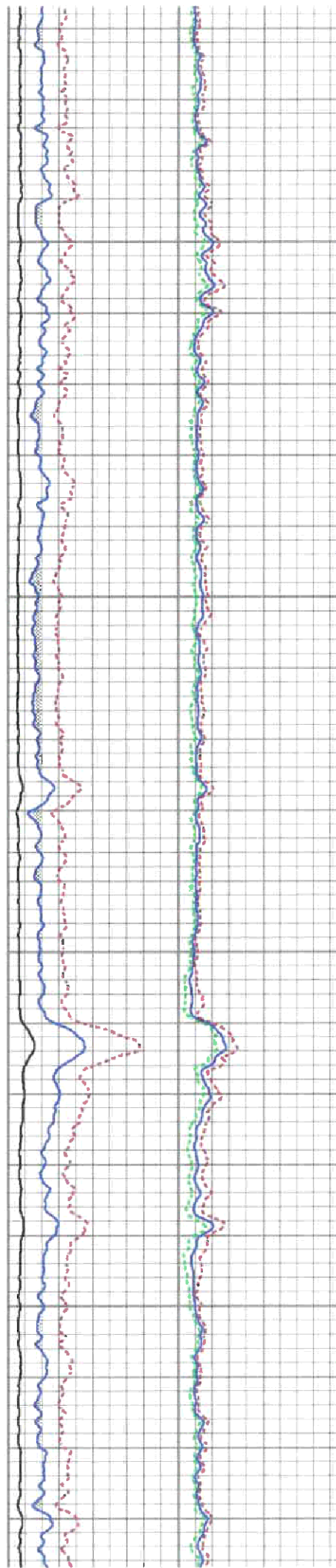


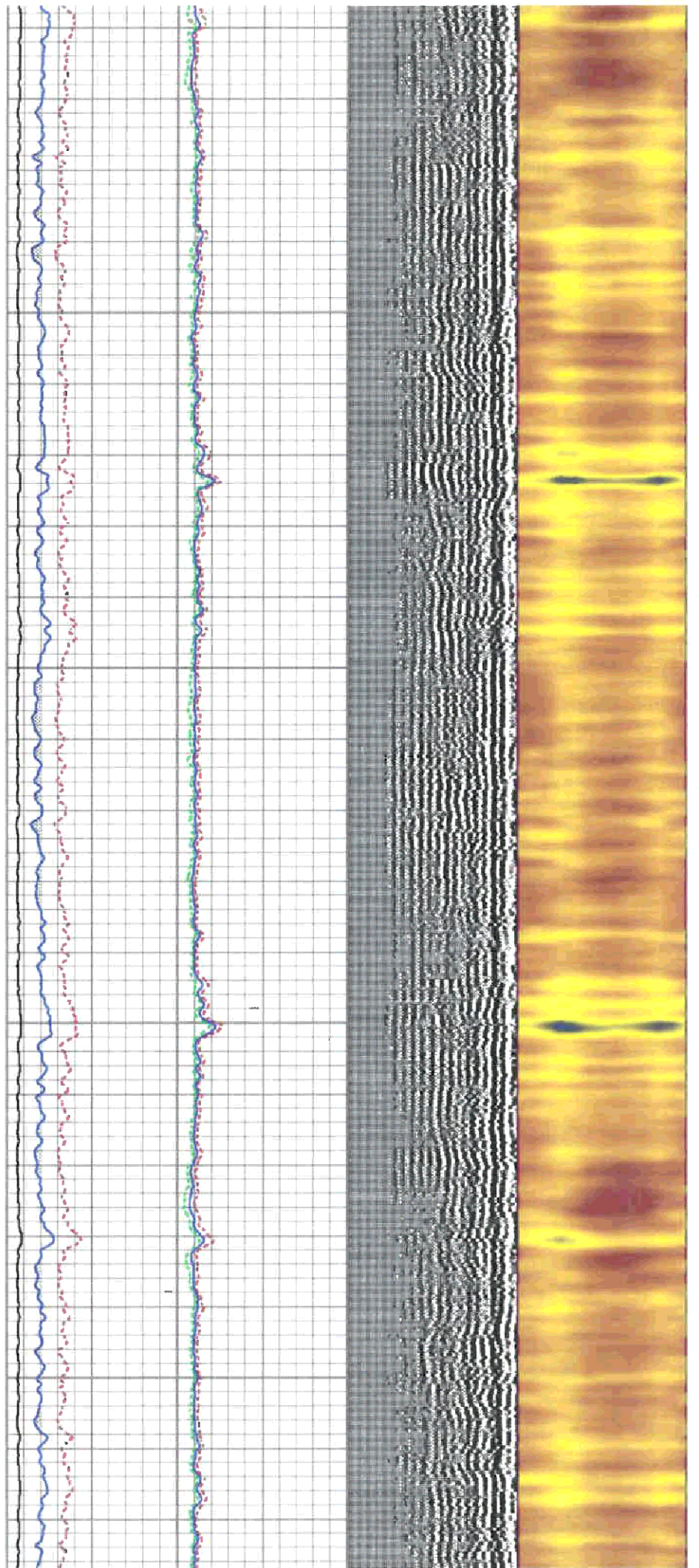
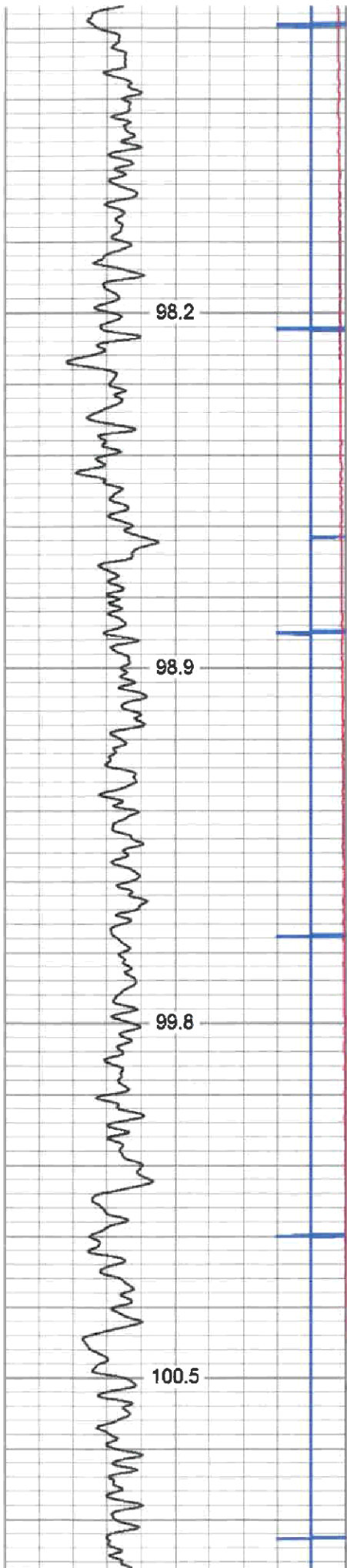
4150

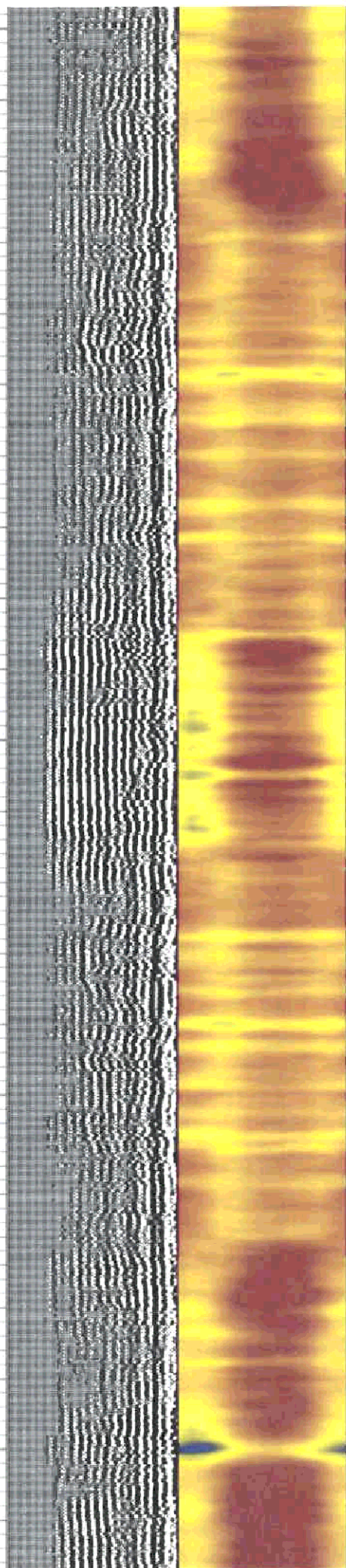
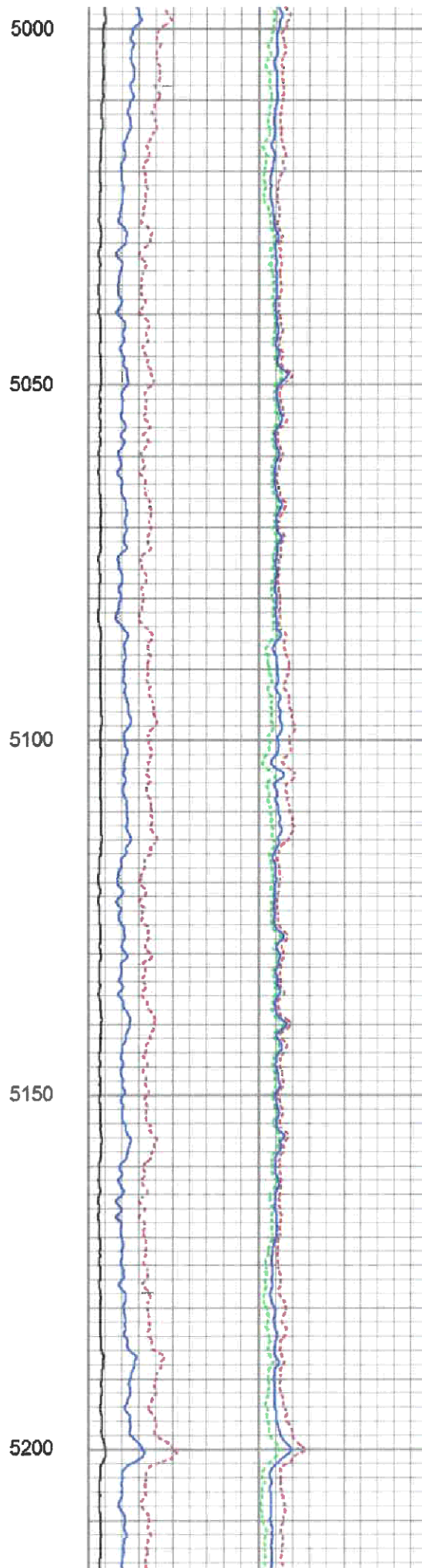
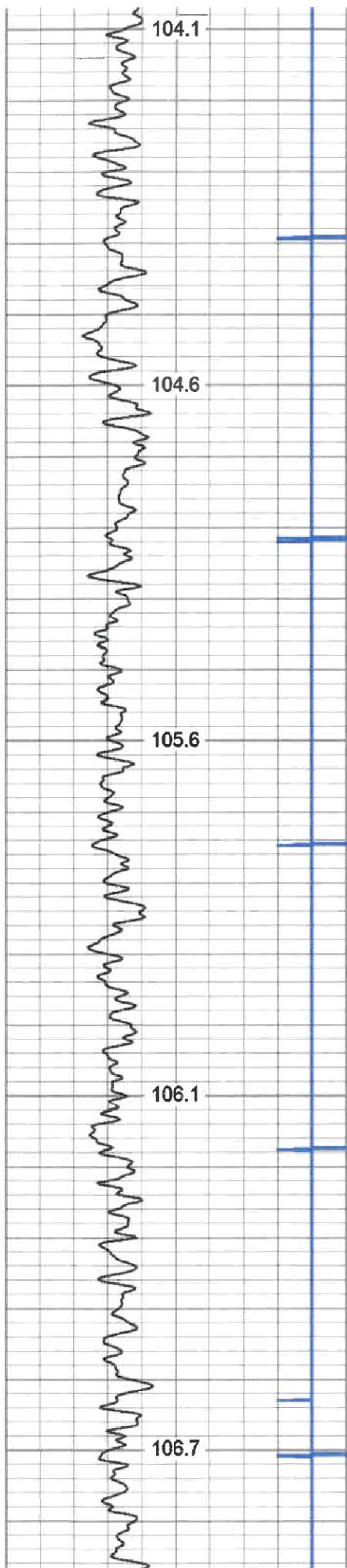
4200

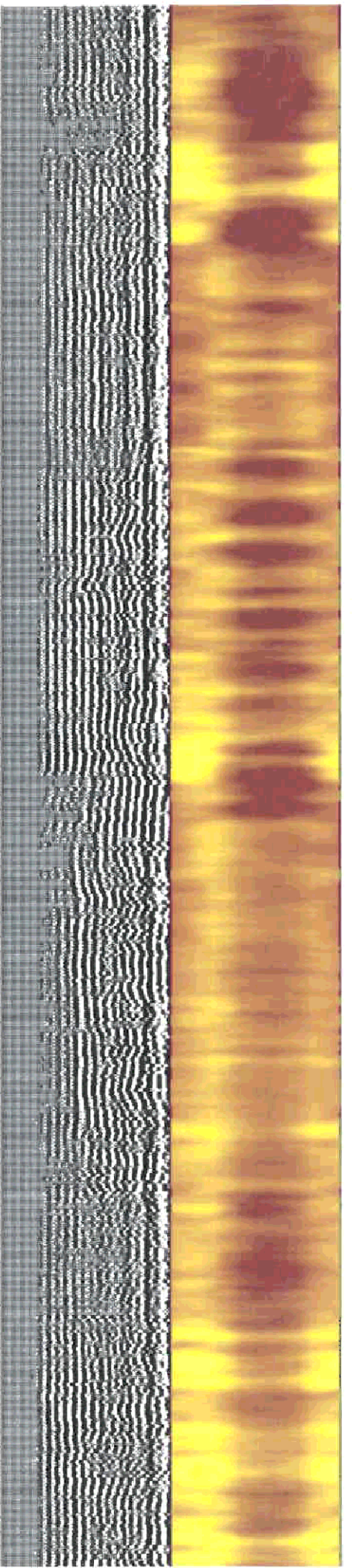
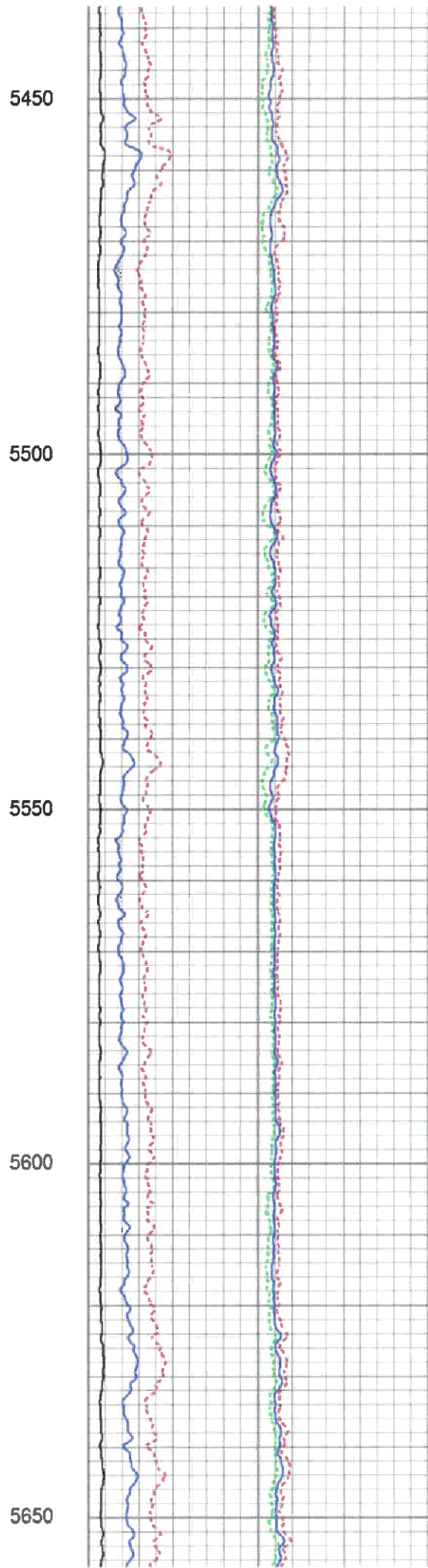
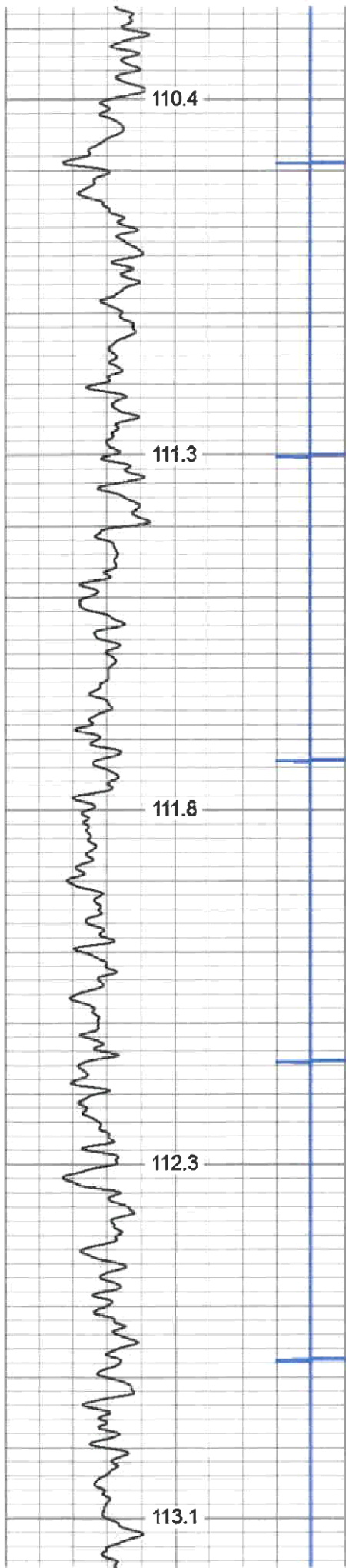
4250

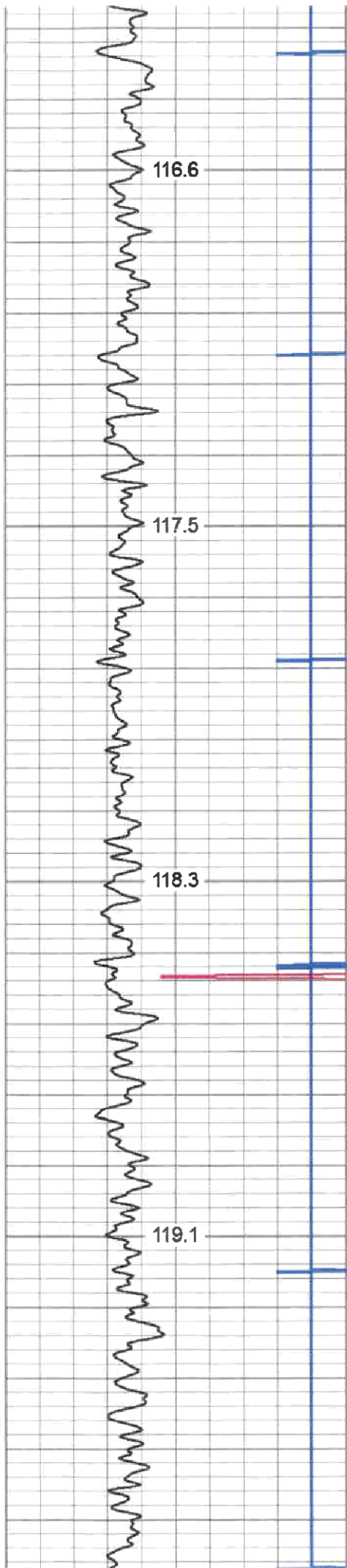
4300









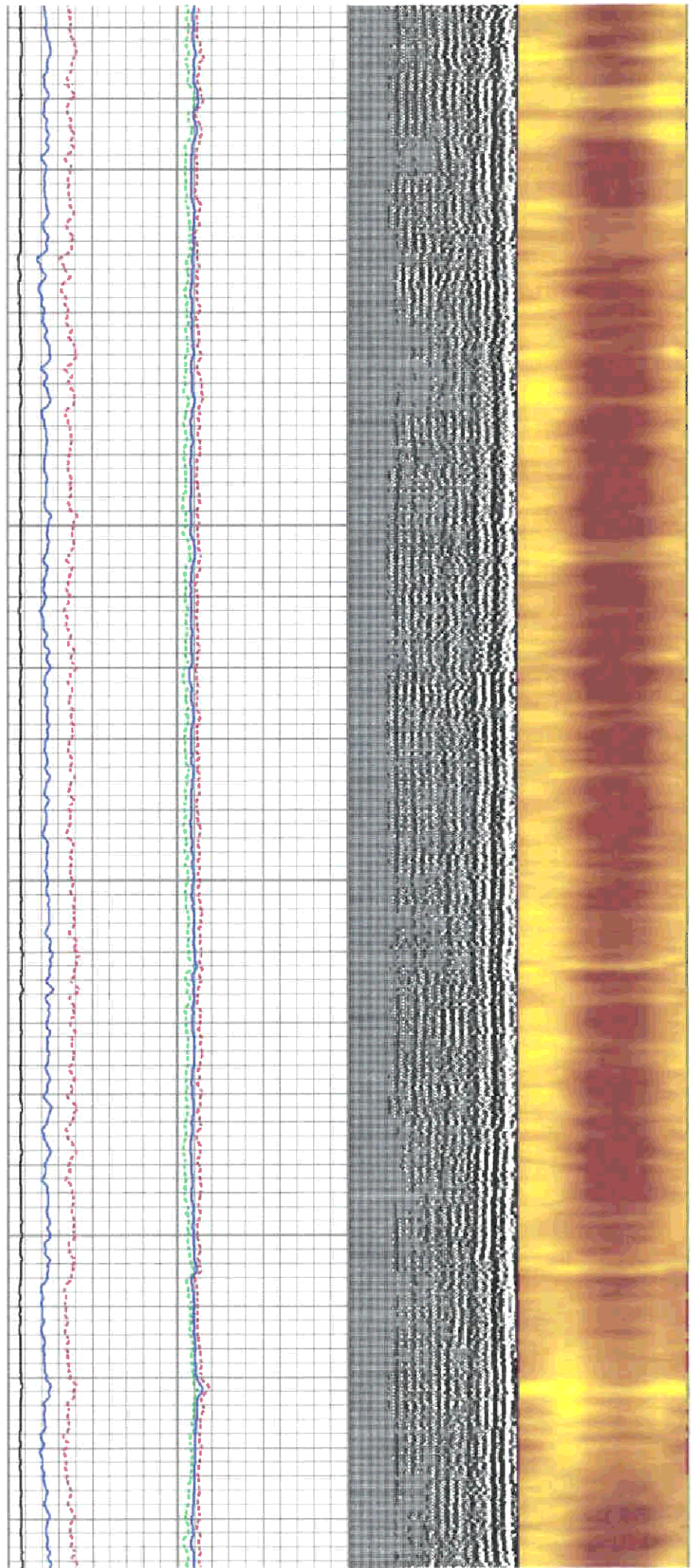


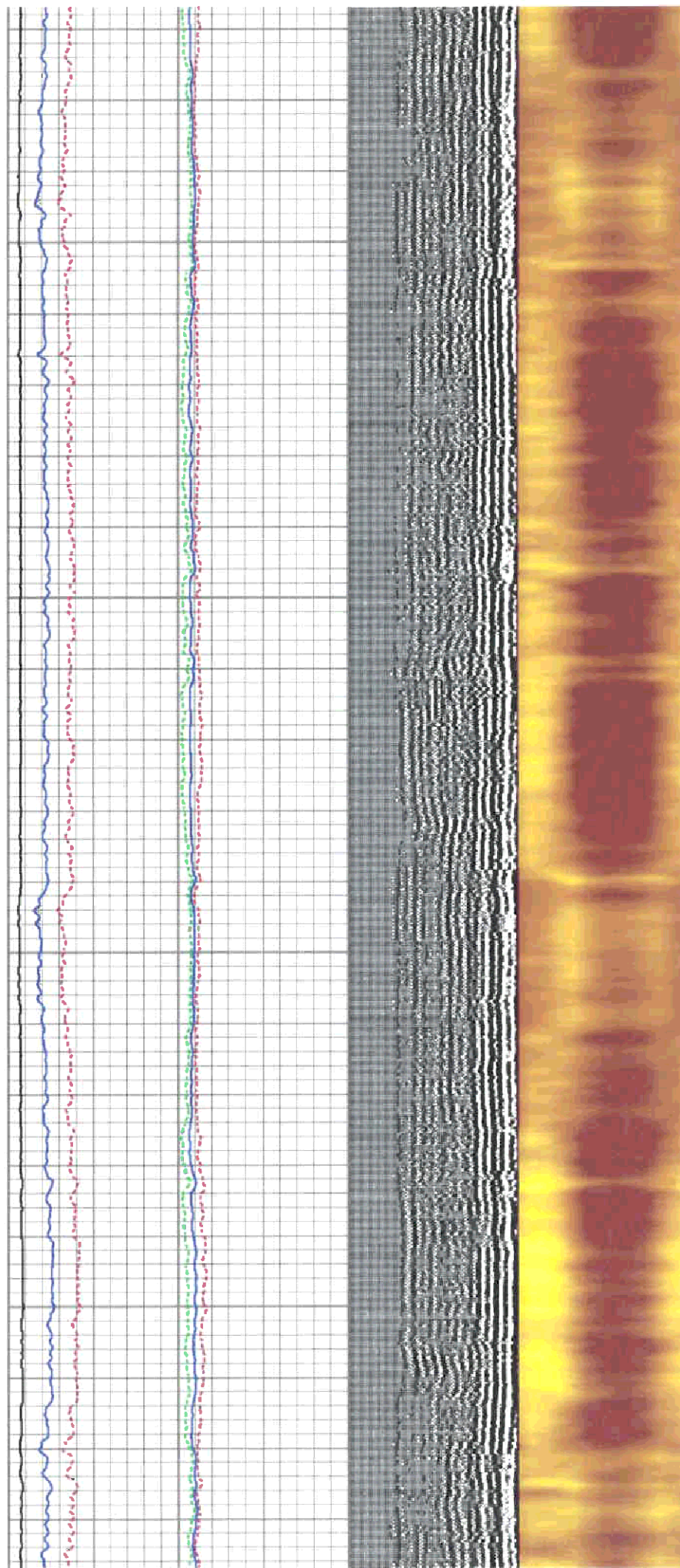
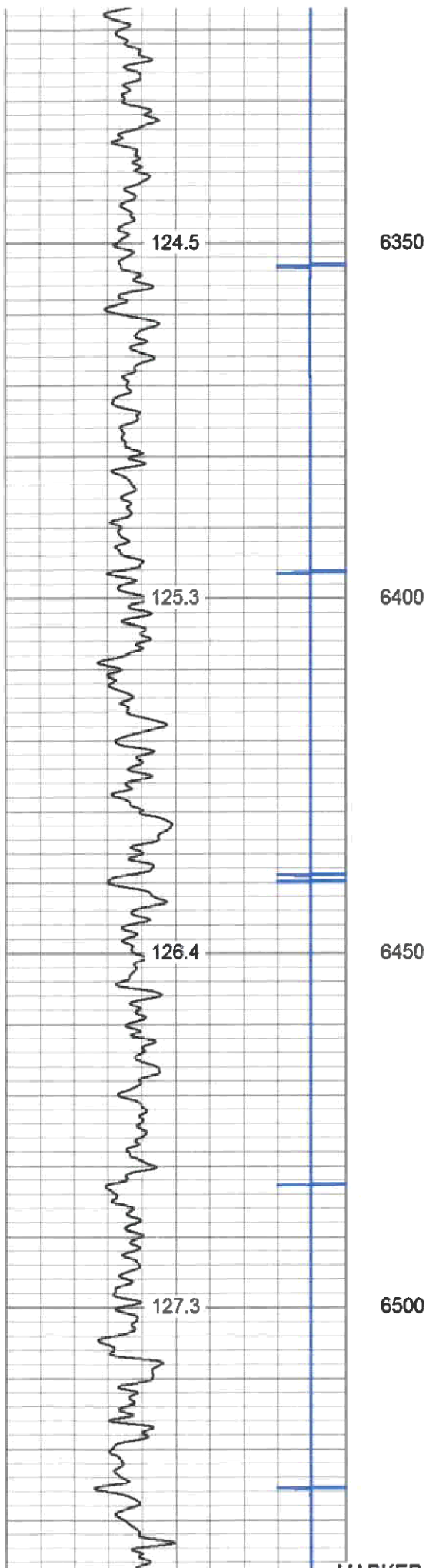
5900

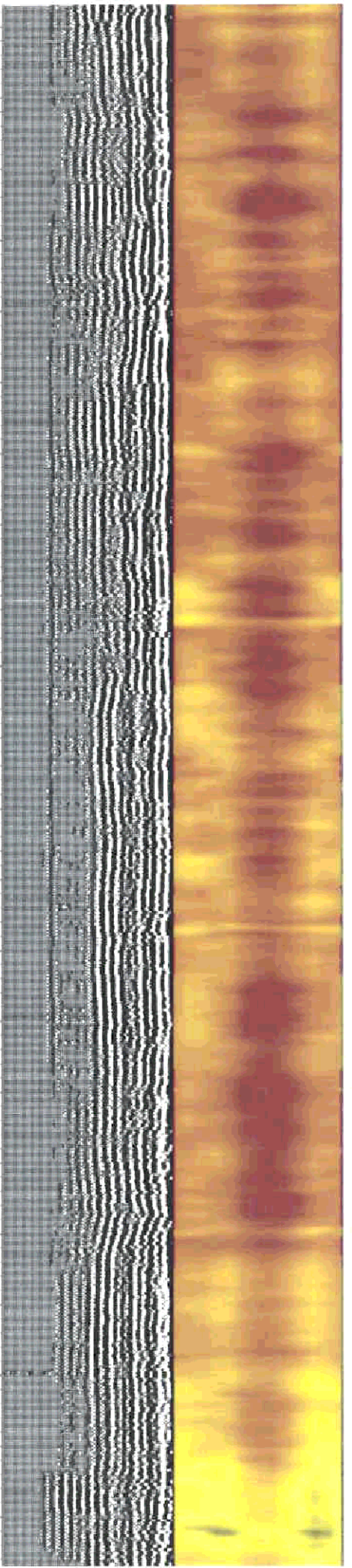
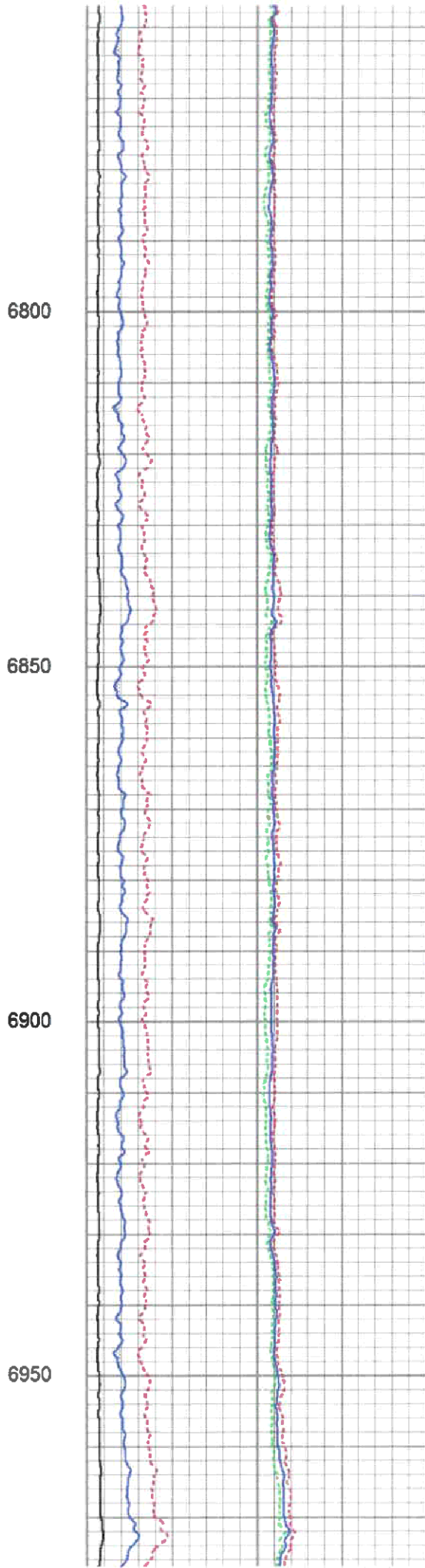
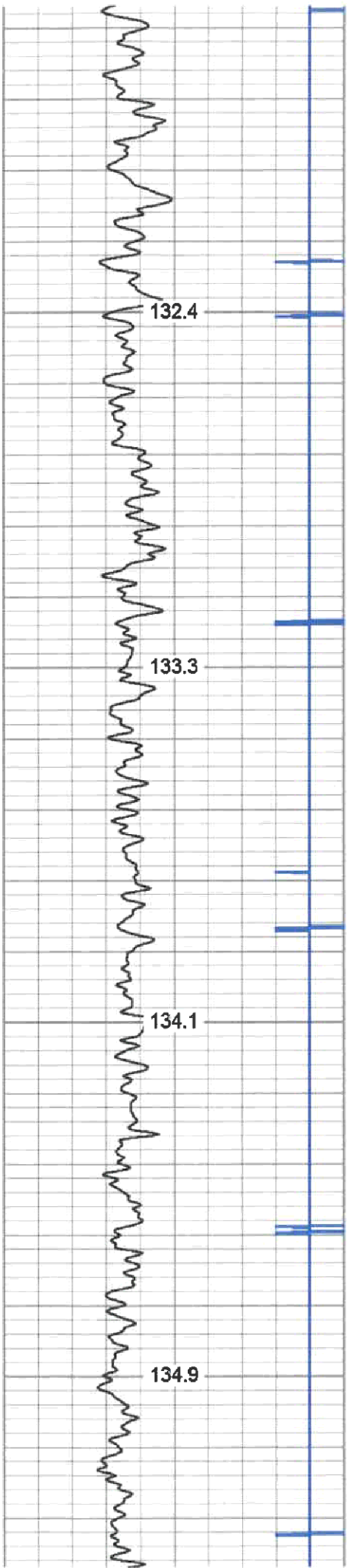
5950

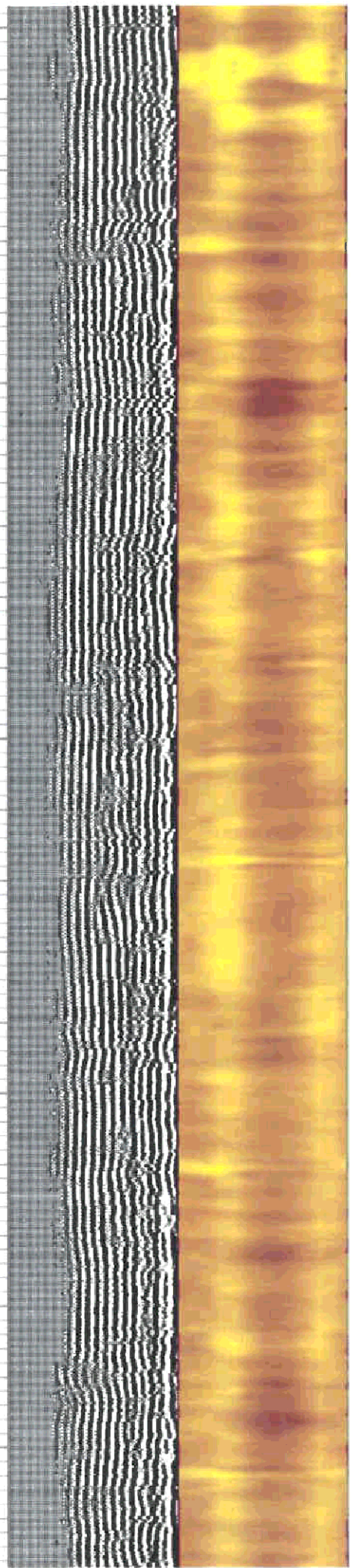
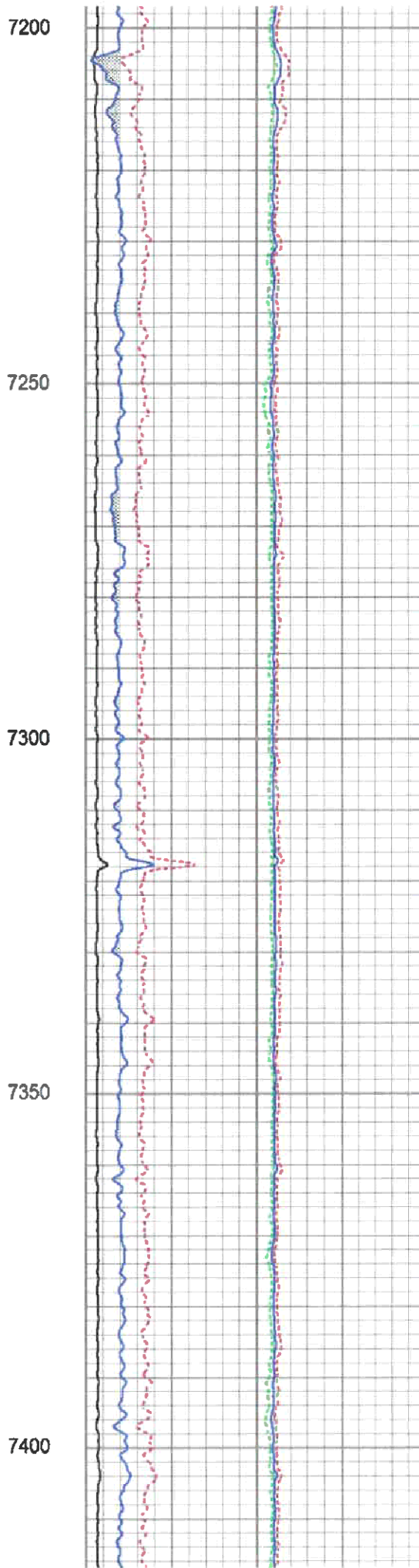
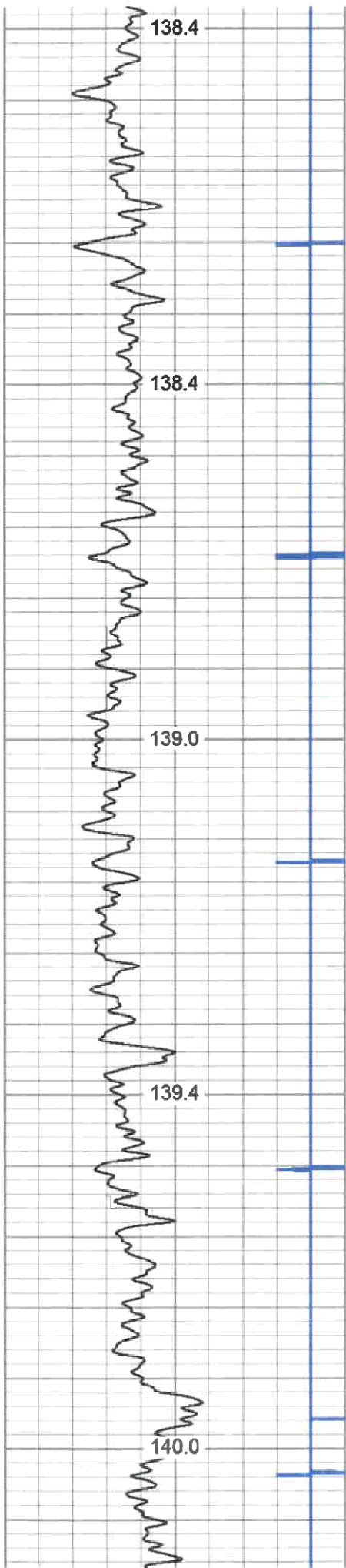
6000

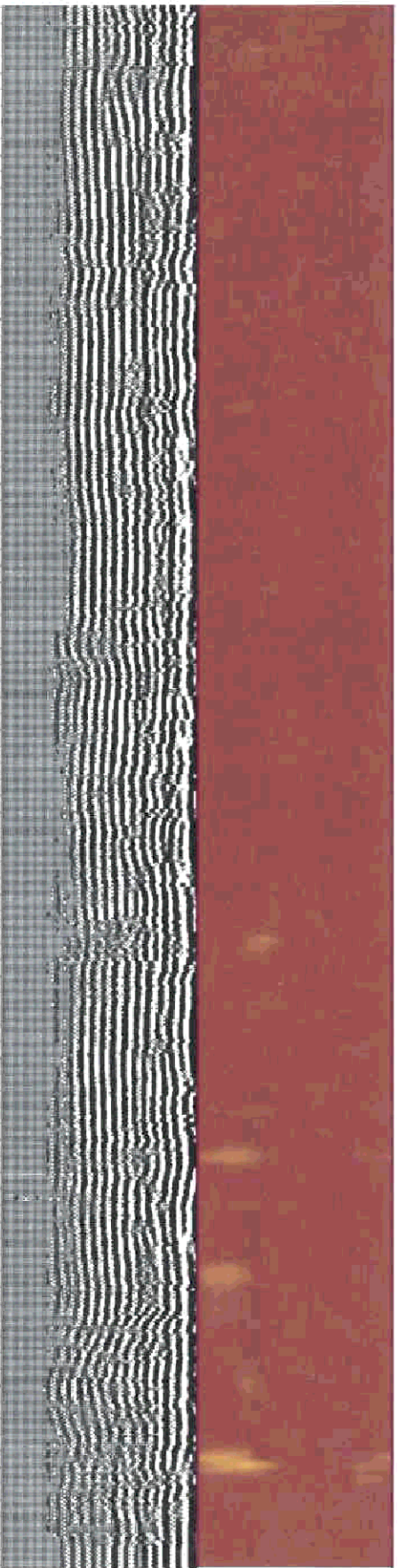
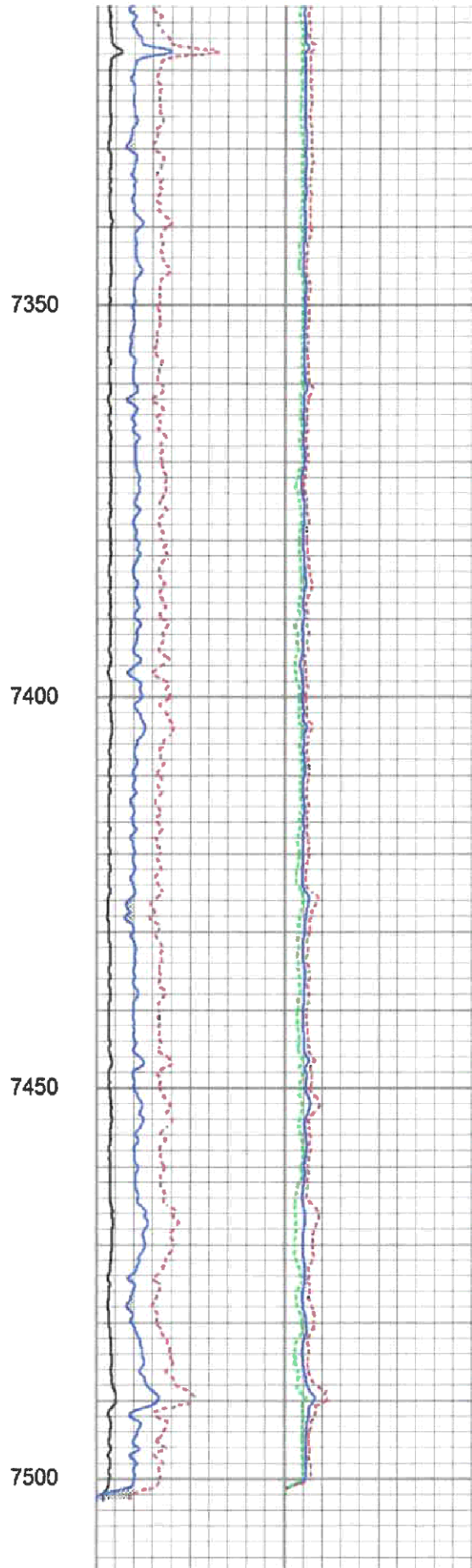
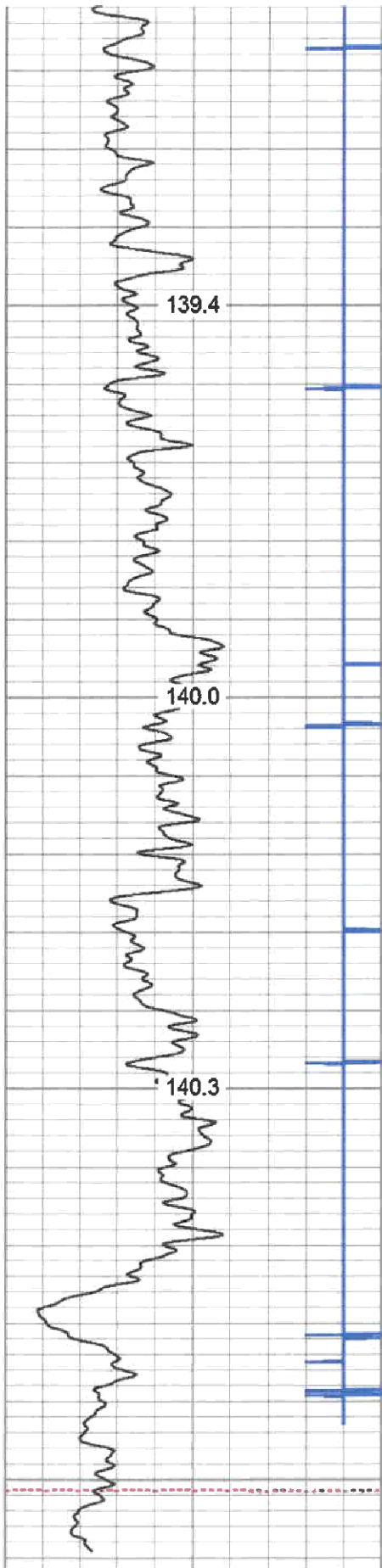
6050







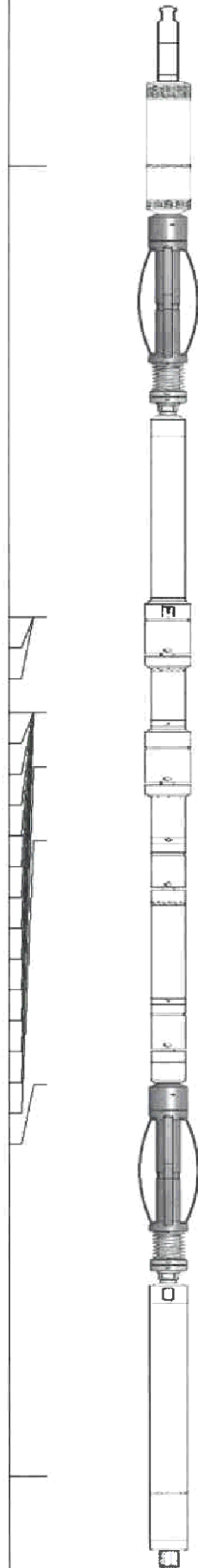
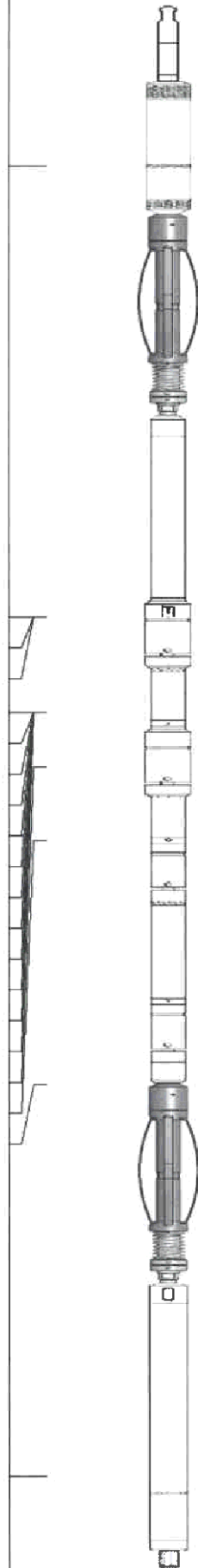
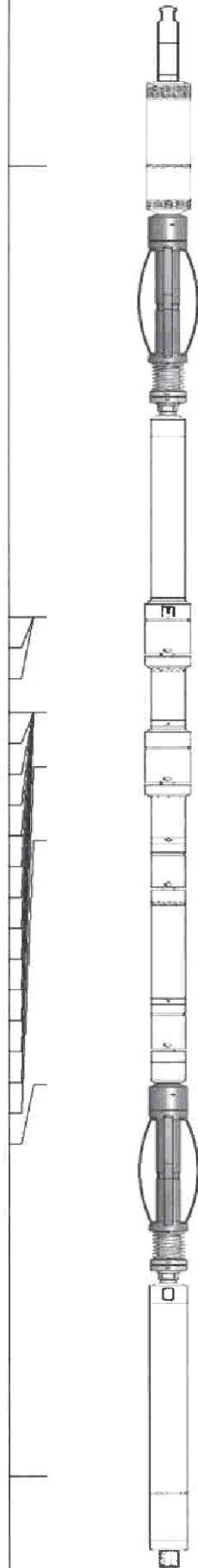




280	Travel Time (usec)	180
9	Casing Collar	-1
0	Gamma Ray (GAPI)	180
0	TEMP (degF)	100

Amplitude	Sector Amp AVG
0 (mV) 100	Sector Amp MAX
Amp X5	Sector Amp MIN
0 (mV) 20	

VDL	1 Sector Map 12
200 (usec) 1200	

Sensor	Offset (ft)	Schematic	Description	Length (ft)	O.D. (in)	Weight (lb)
CCL	19.20		Titan-1.4375 1 7/16 Titan Type II Cable Head	1.03	1.44	5.00
			CCL-312tekco (101) Tekco 3 1/8" 450 Deg. "F" SmCo Logging CCL	1.82	3.12	25.00
			Tek-2.75 2 3/4" Tekco Adjustable Centralizer	2.73	2.75	25.00
TEMP	13.04		SCBL-Tek12 (T12_01) Tekco 400 Deg F 12 Sector RIB with Temp	9.13	3.25	135.00
WVFSYNC	13.04					
WVFCAL	13.04					
WVFS12	11.75					
WVFS11	11.75					
WVFS10	11.75					
WVFS9	11.75					
WVFS8	11.75					
WVFS7	11.75					
WVFS6	11.75					
WVFS5	11.75					
WVFS4	11.75					
WVFS3	11.75					
WVFS2	11.75					
WVFS1	11.75					
WVF3FT	11.00					
WVF5FT	10.00					
WVFTEMP	6.67		GR-Tek-Co 2 3/4 (0111) Tekco 2 3/4" 400 Deg. F Logging Gamma Ray	3.67	2.75	40.00
GR	1.31					

Dataset:
Total length:

anteroa.db: field/well/run1/pass3.4
21.37 ft