



**RADIAL BOND LOG
GAMMA RAY
VDL,CCL**

Company ANTERO RESOURCES CORPORATION
Well OXFORD 97 BHS
Field MARCELLUS
County DODDRIDGE
State WV Country USA

Company ANTERO RESOURCES CORPORATION
Well OXFORD 97 BHS
Field MARCELLUS
County DODDRIDGE
State WV Country USA

Location: API #: 47017064820000

Other Services

SEC TWP RGE
AFE A06739

Elevation

Permanent Datum
Log Measured From
Drilling Measured From

Elevation

K.B.
D.F.
G.L.

Date	8-29-19					
Run Number	1					
Depth Driller	16448					
Depth Logger	7214					
Bottom Logged Interval	7214					
Top Log Interval	0					
Open Hole Size	NA					
Type Fluid	WATER					
Density / Viscosity	NA					
Max. Recorded Temp.	136.5					
Estimated Cement Top	200					
Time Well Ready	ON ARRIVAL					
Time Logger on Bottom	16.45					
Equipment Number	624874					
Location	BRIDGEPORT					
Recorded By	P. DAVIDSON					
Witnessed By	DAVE GANDEE					
Borehole Record			Tubing Record			
Run Number	Bit	From	To	Size	Weight	From
						To
Casing Record	Size	WgVt		Top	Bottom	
Surface String						
Prot. String						
Production String						
Liner						

<<< Fold Here >>>

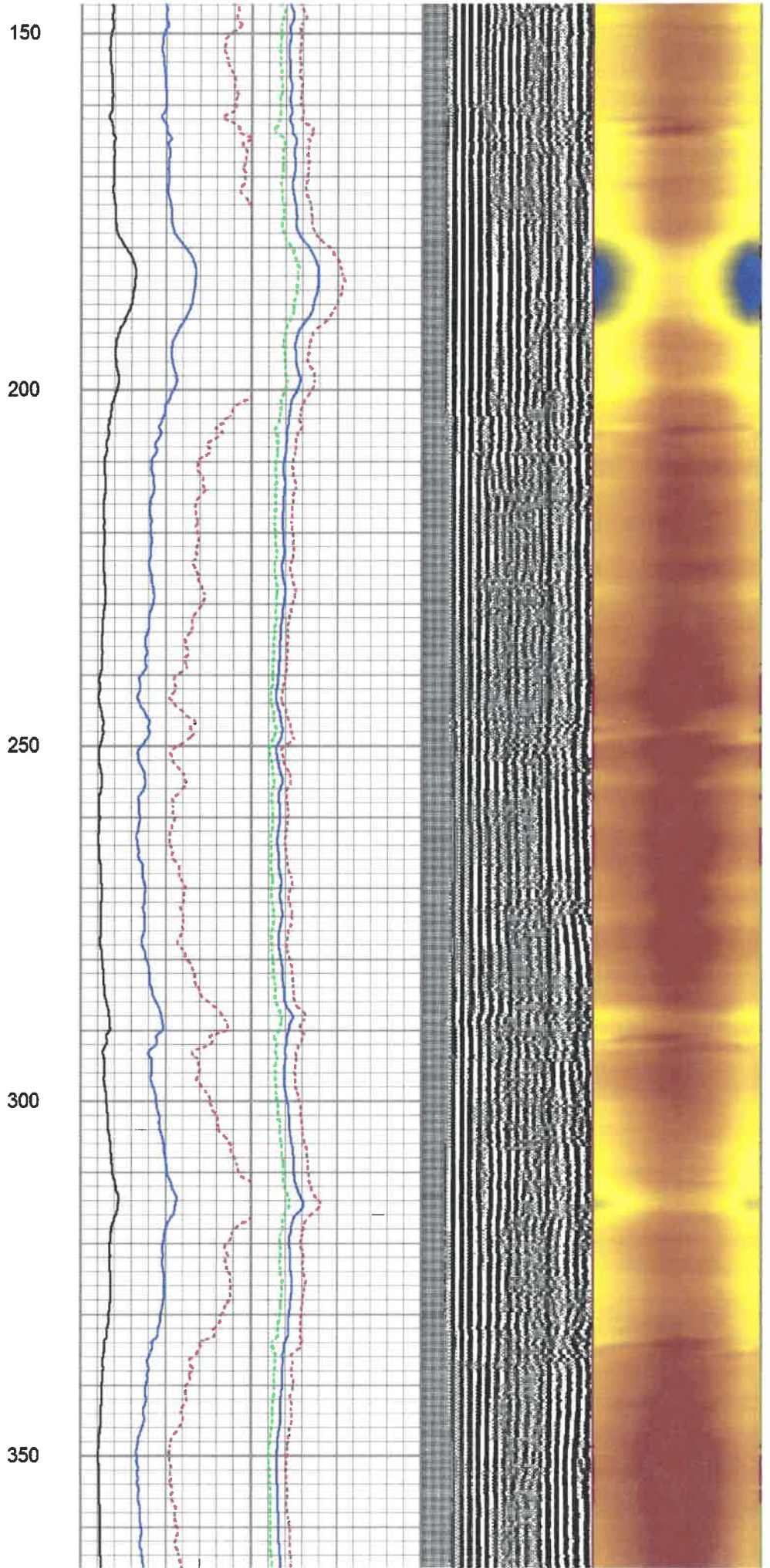
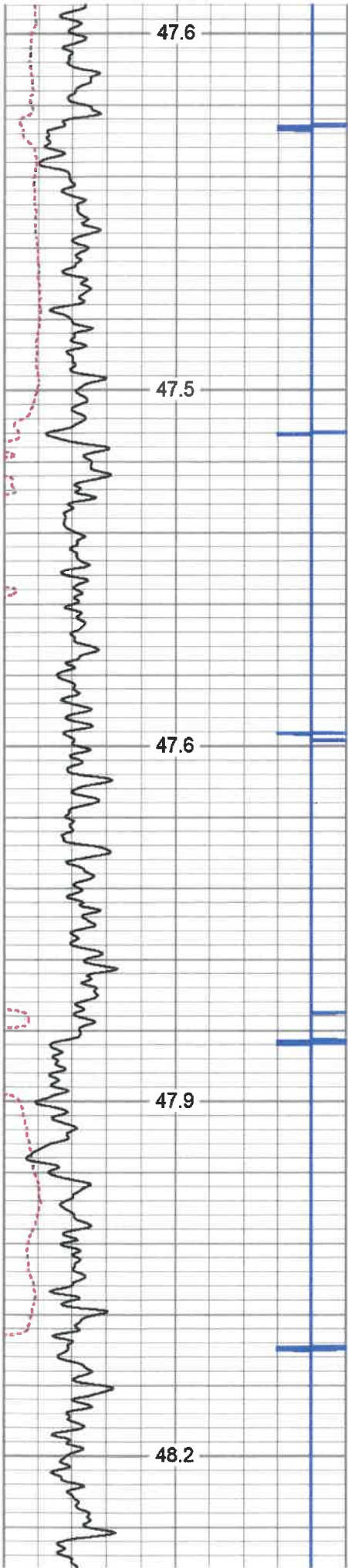
All interpretations are opinions based on inferences from electrical or other measurements and we cannot and do not guarantee the accuracy or correctness of any interpretation, and we shall not, except in the case of gross or willful negligence on our part, be liable or responsible for any loss, costs, damages, or expenses incurred or sustained by anyone resulting from any interpretation made by any of our officers, agents or employees. These interpretations are also subject to our general terms and conditions set out in our current Price Schedule.

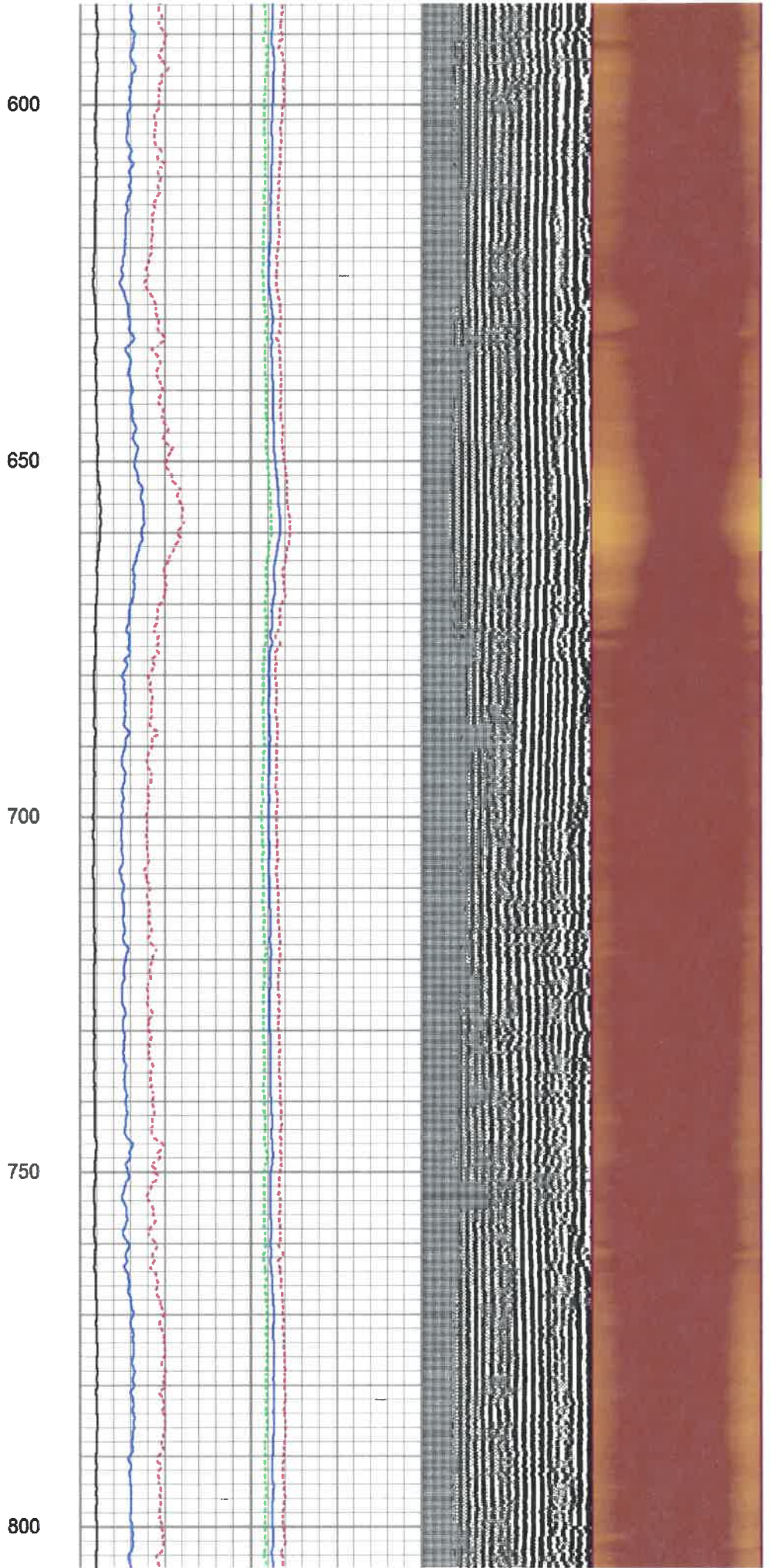
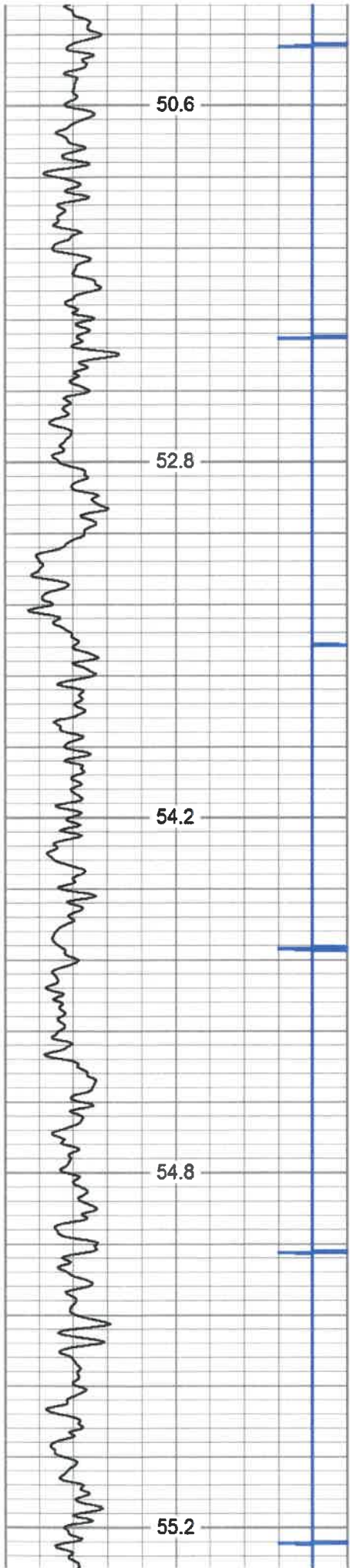
Comments

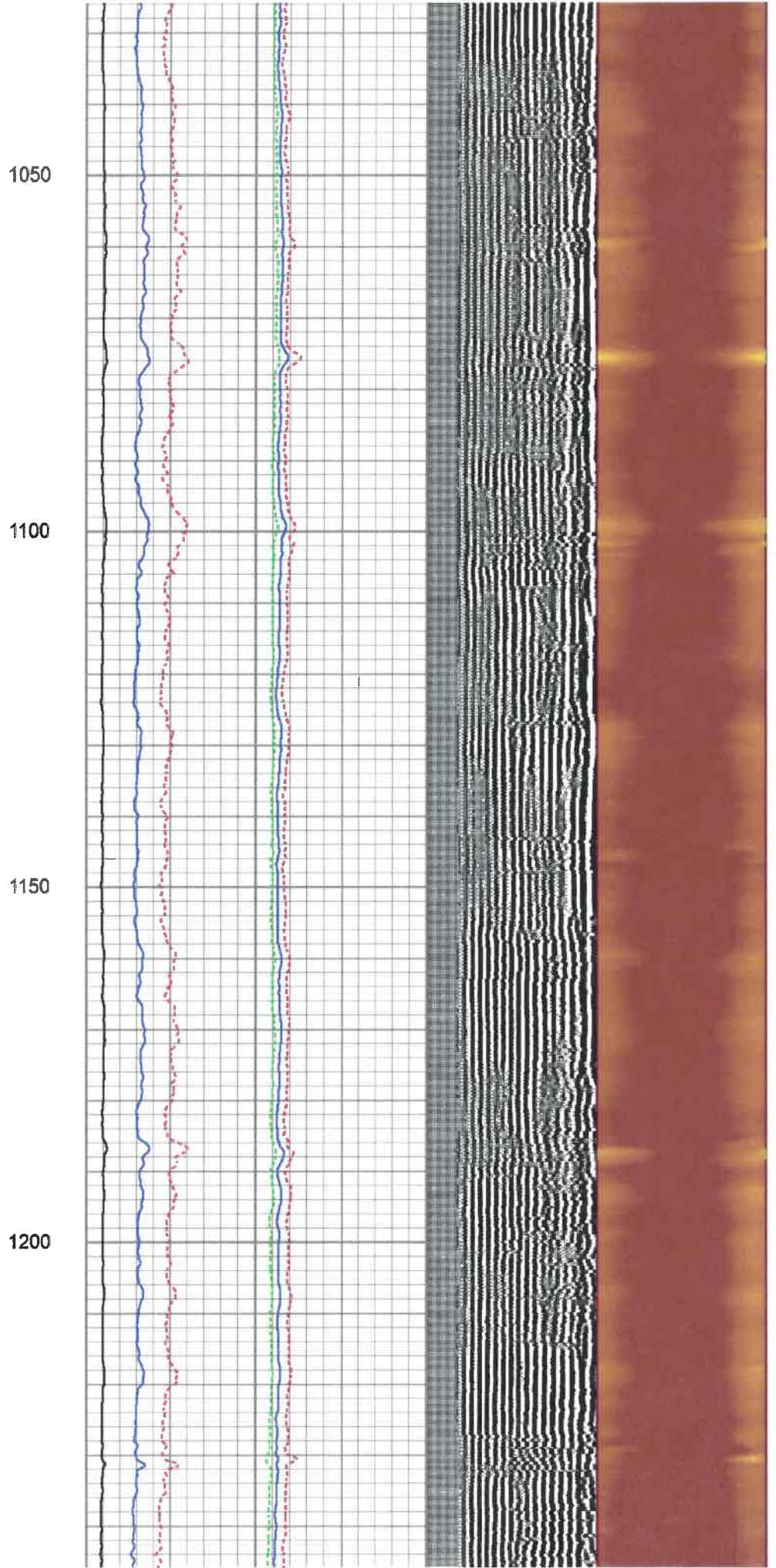
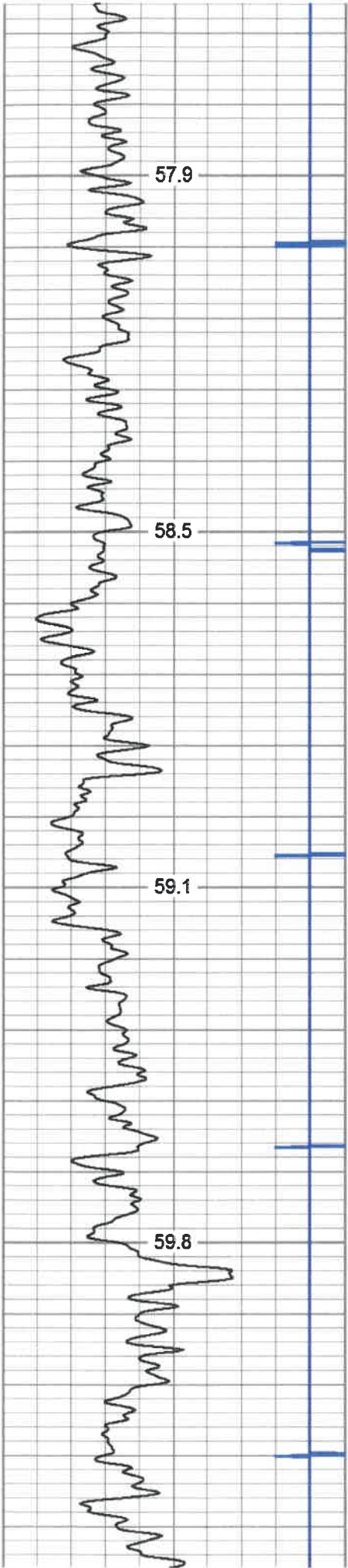
MARKER JOINT @ 6700-6721
LOG TD 7214
CEMENT TOP @ 200
LOG RAN UNDER 1500 PSI.
THANK YOU FOR CHOOSING KLX ENERGY SERVICES

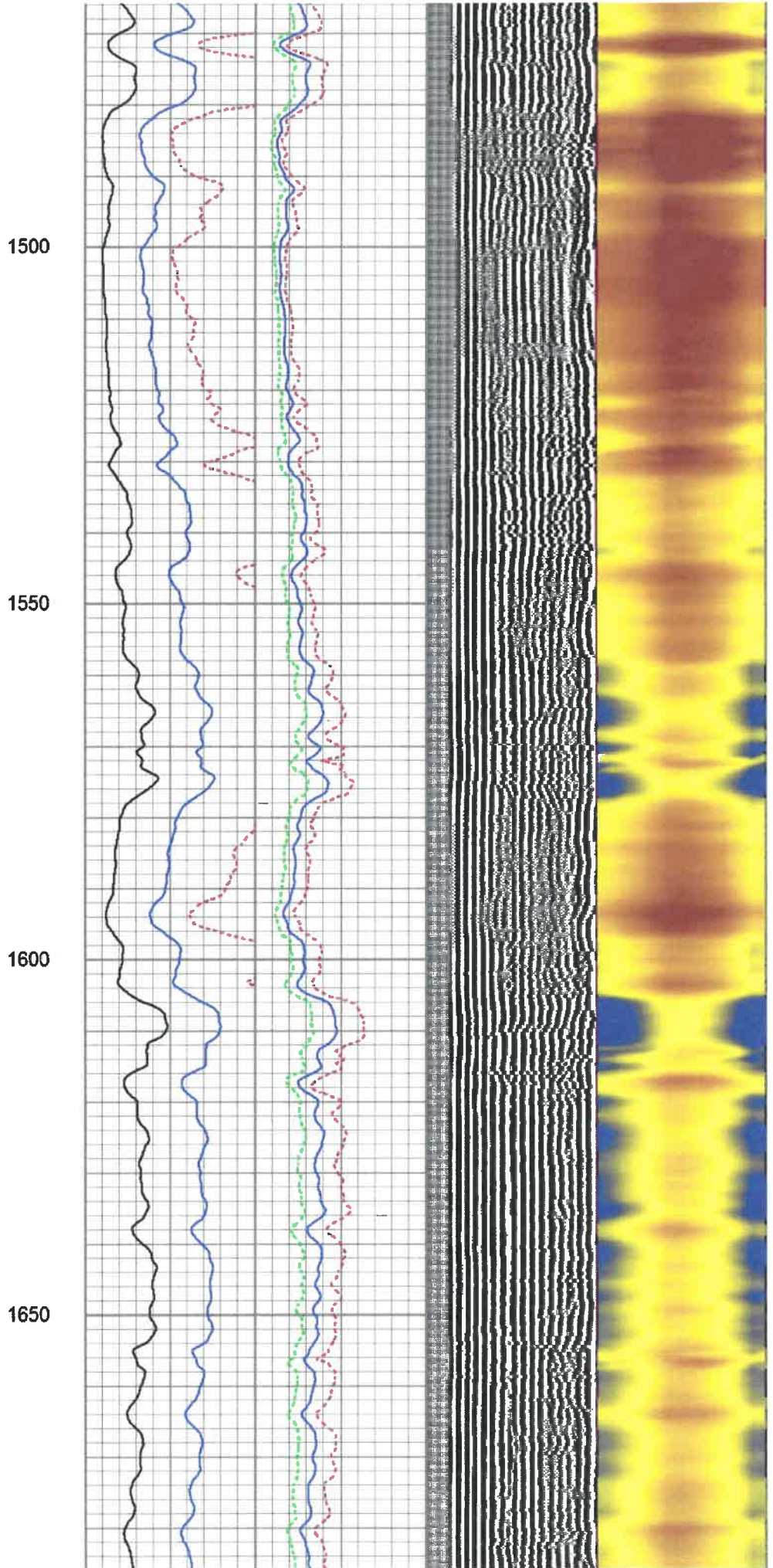
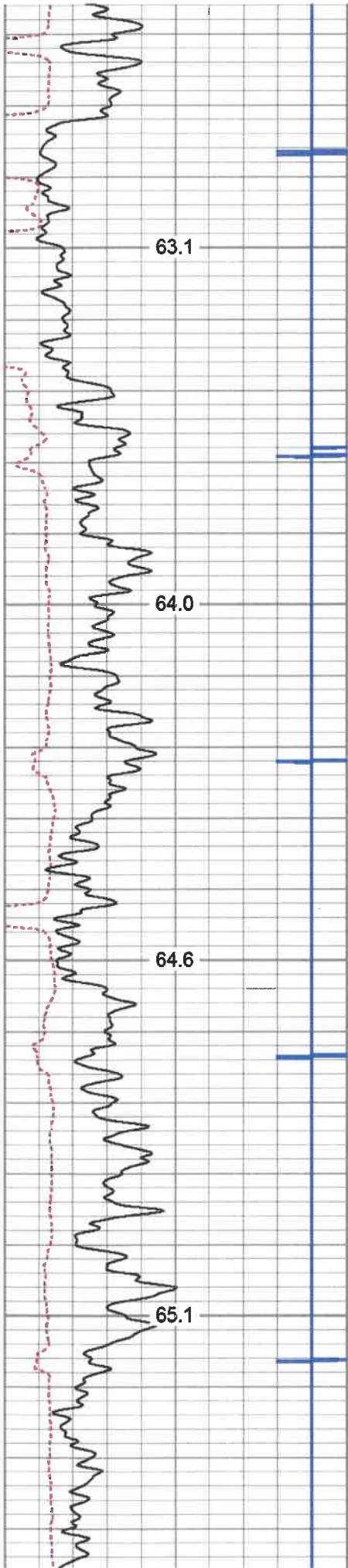


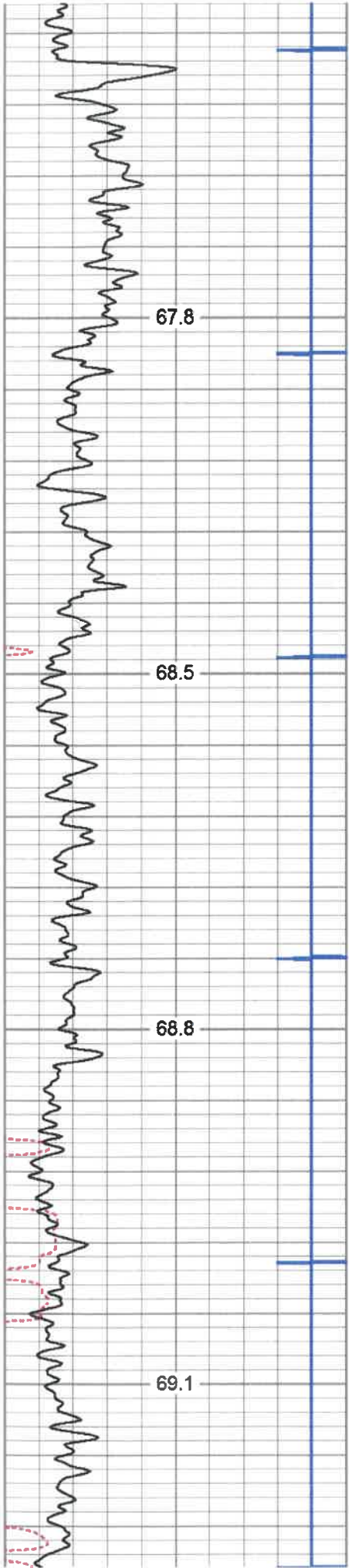
MAIN LOG 1500 PSI









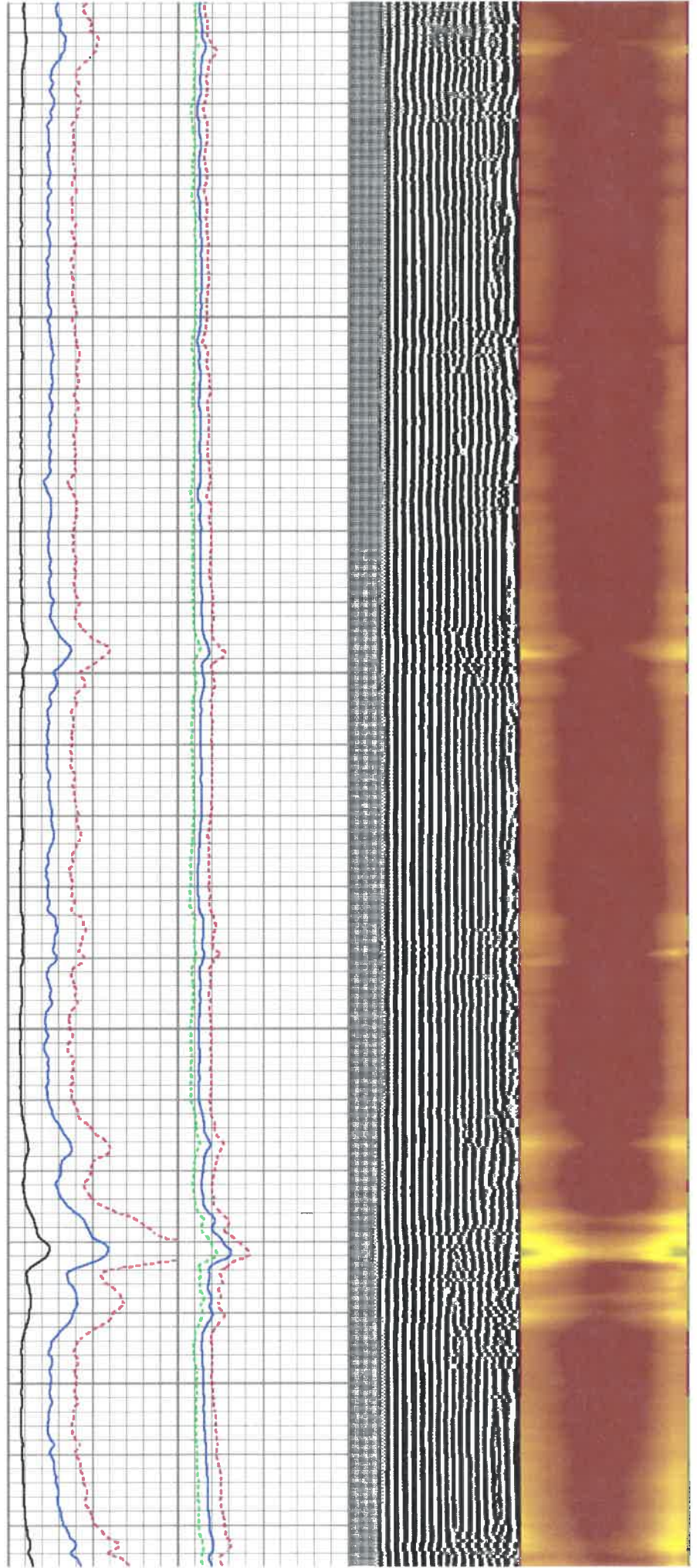


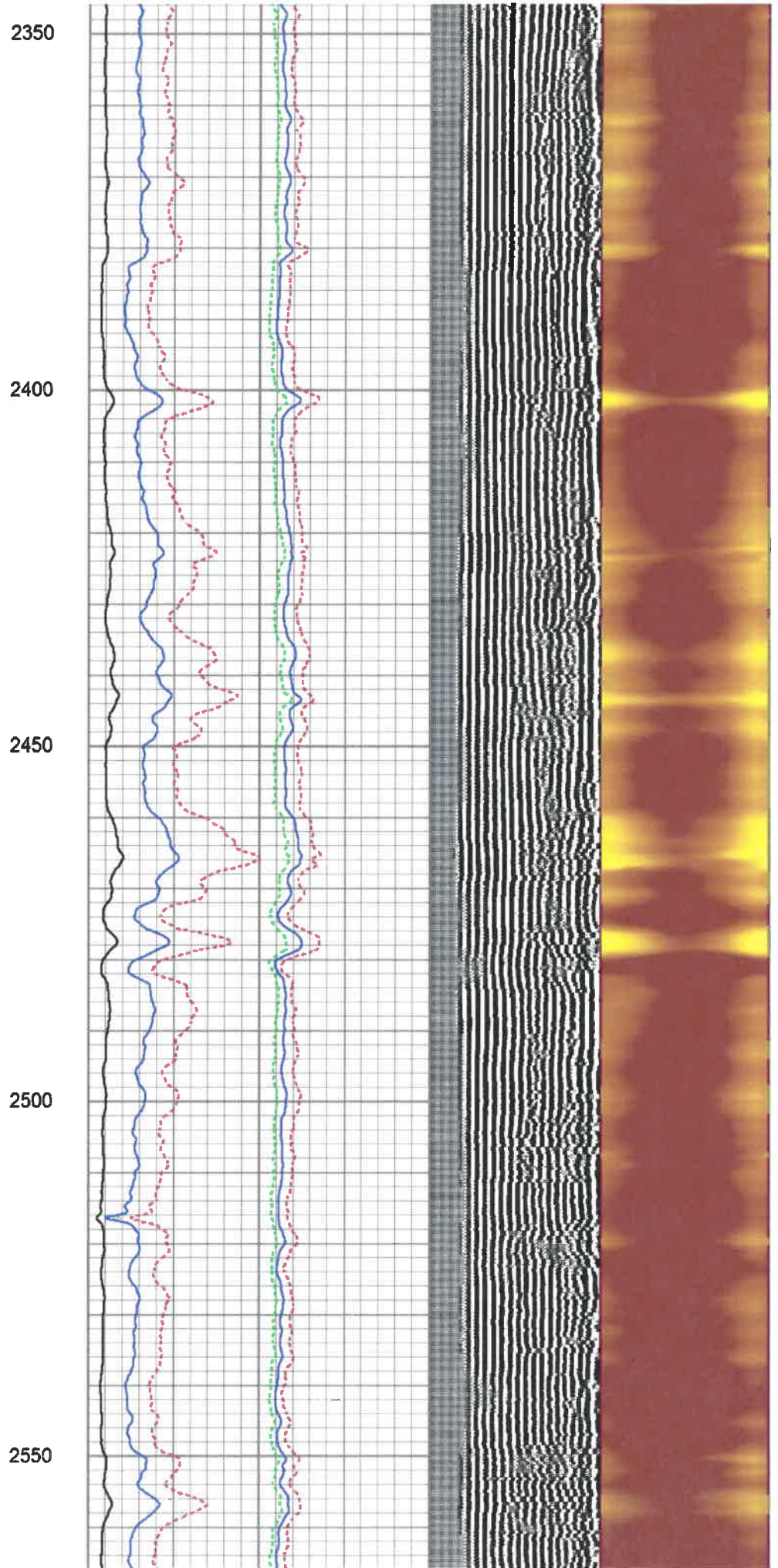
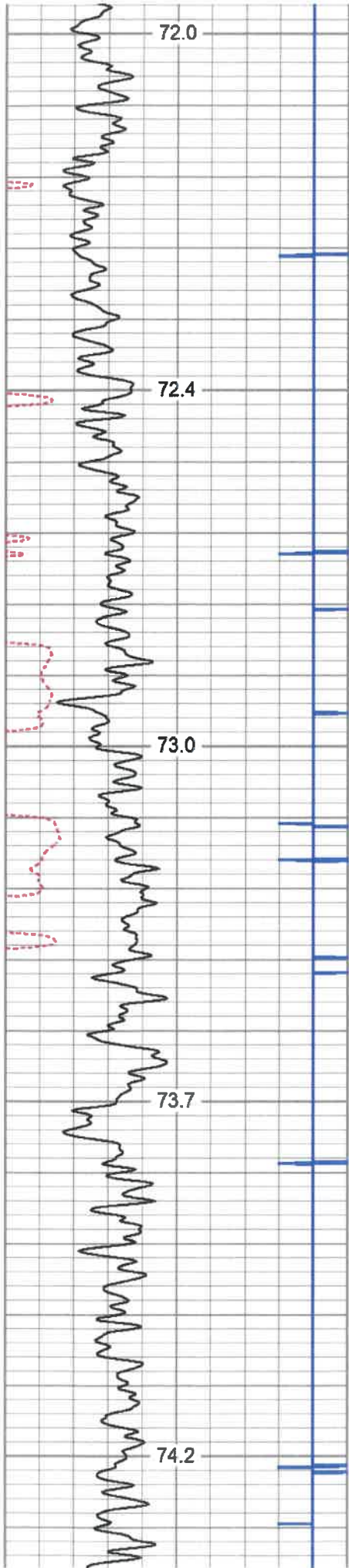
1950

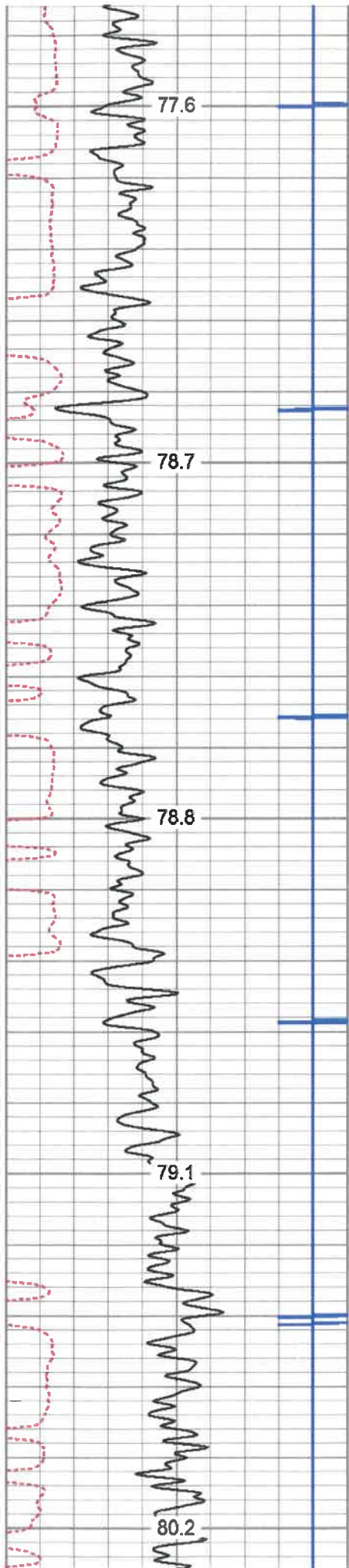
2000

2050

2100







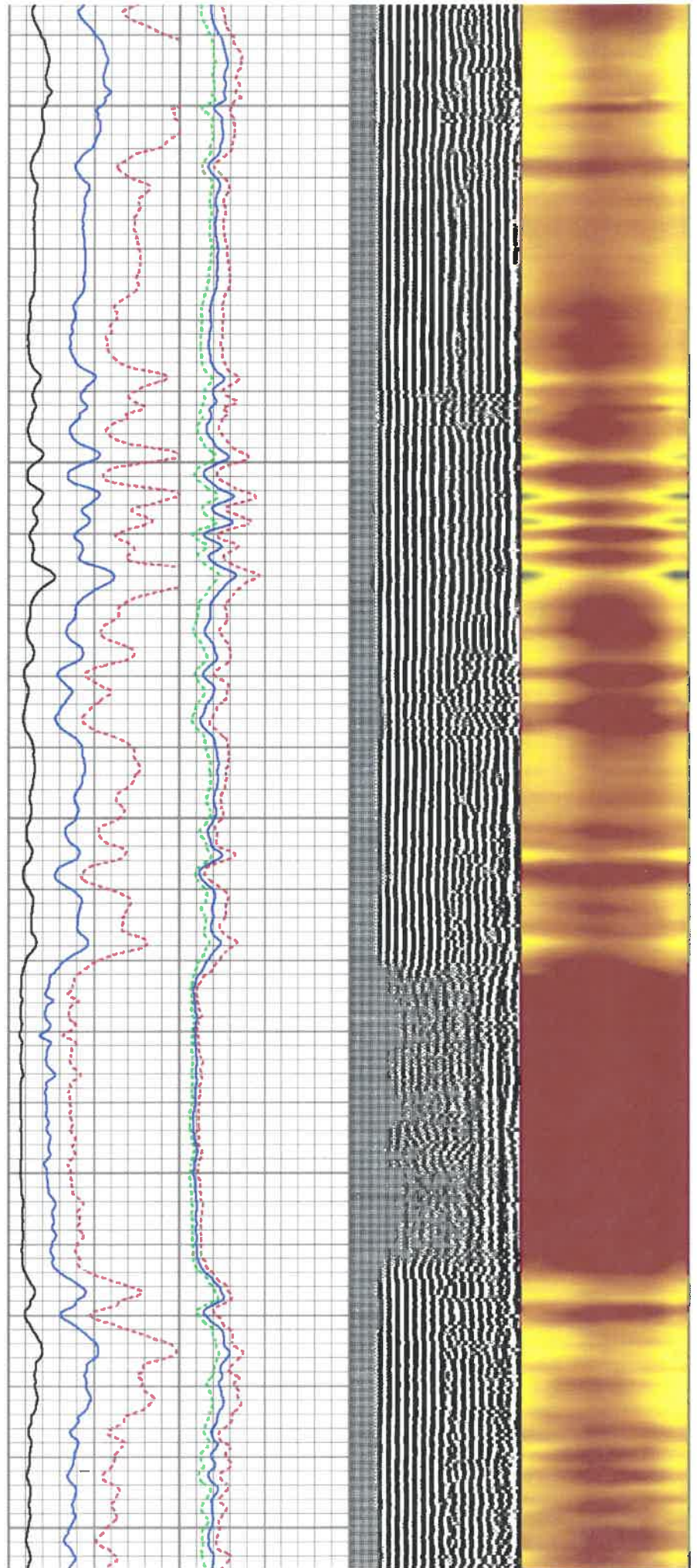
2800

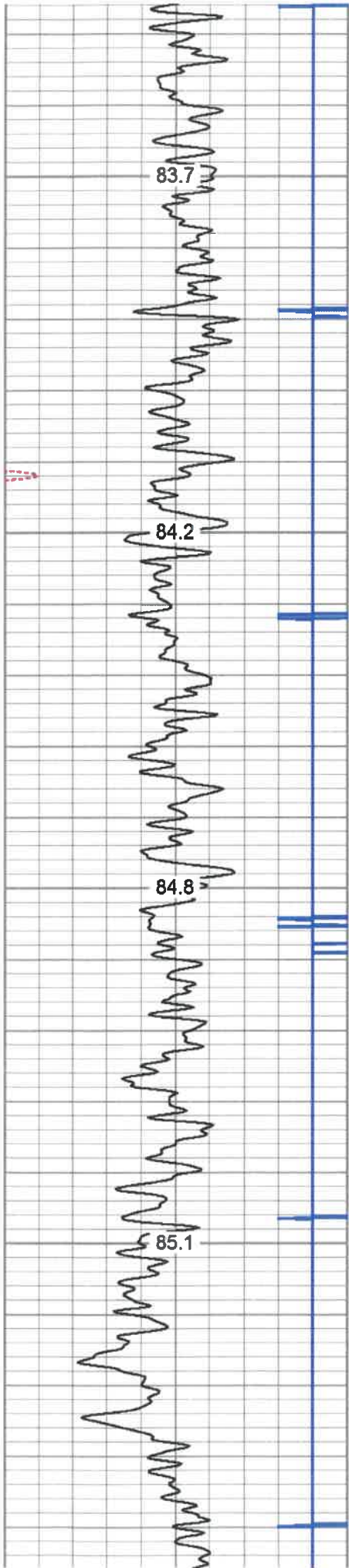
2850

2900

2950

3000



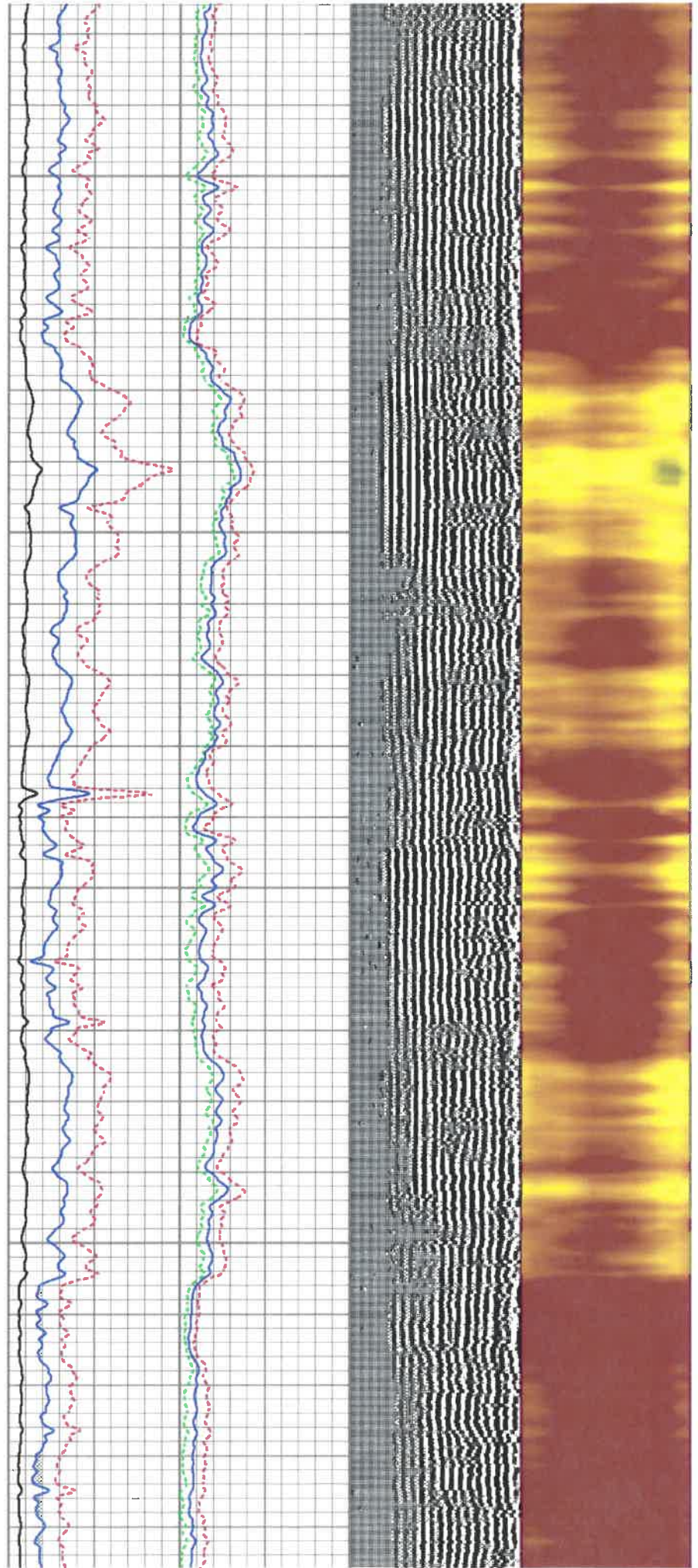


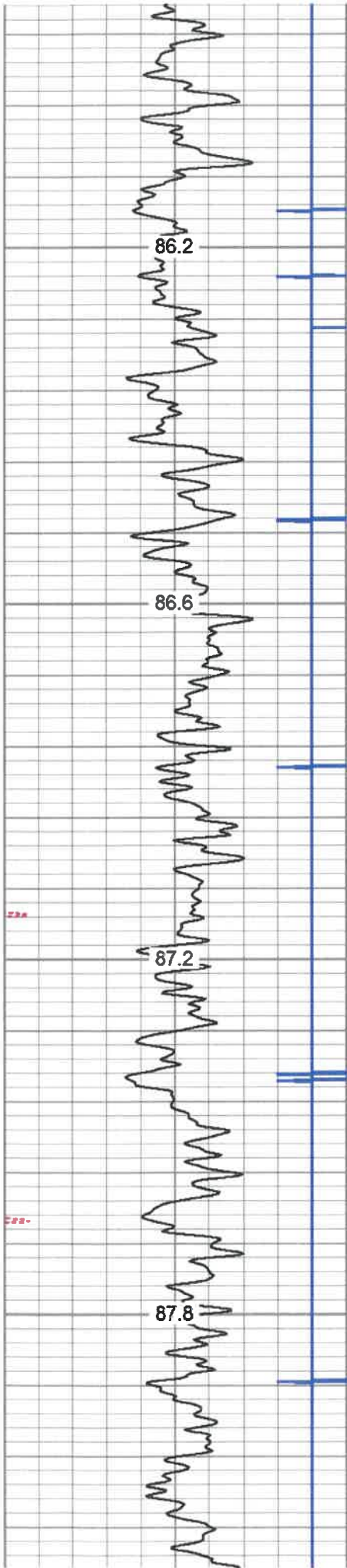
3250

3300

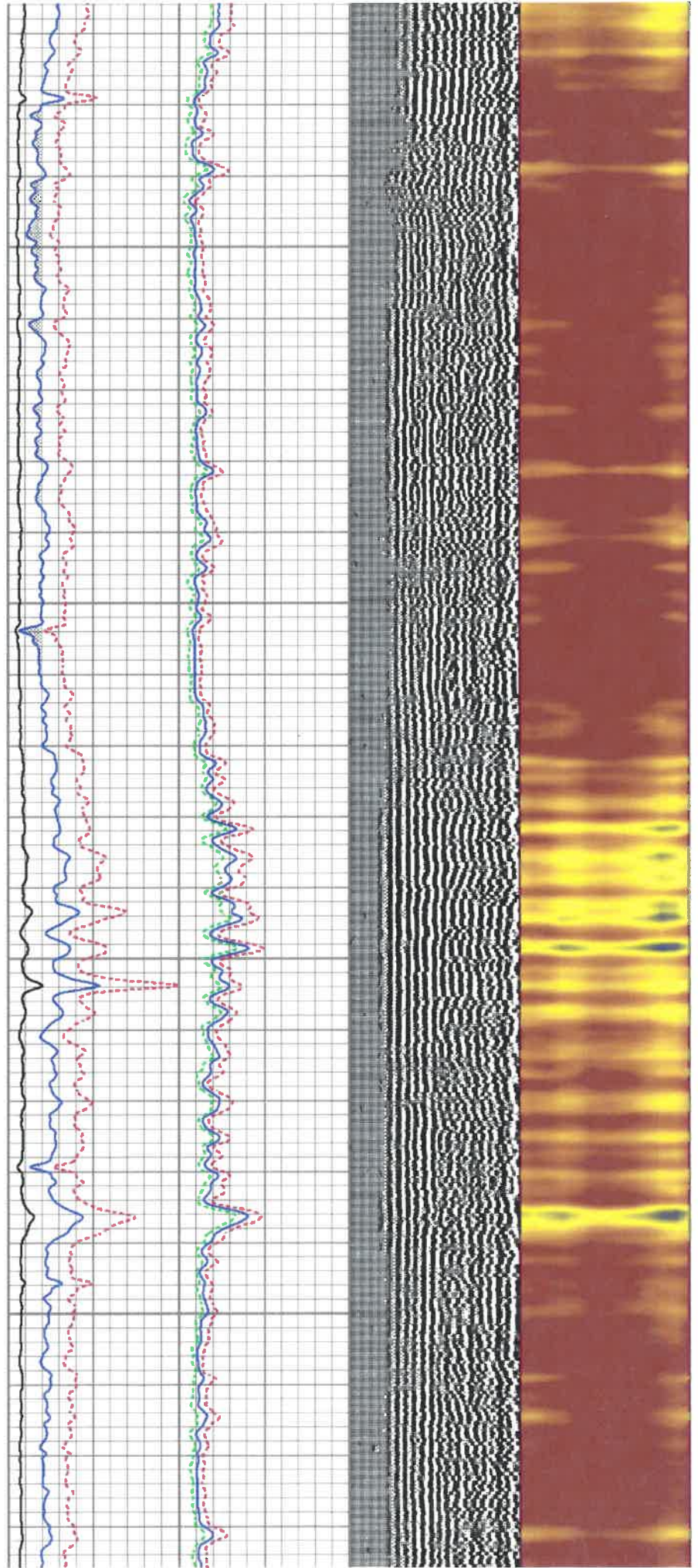
3350

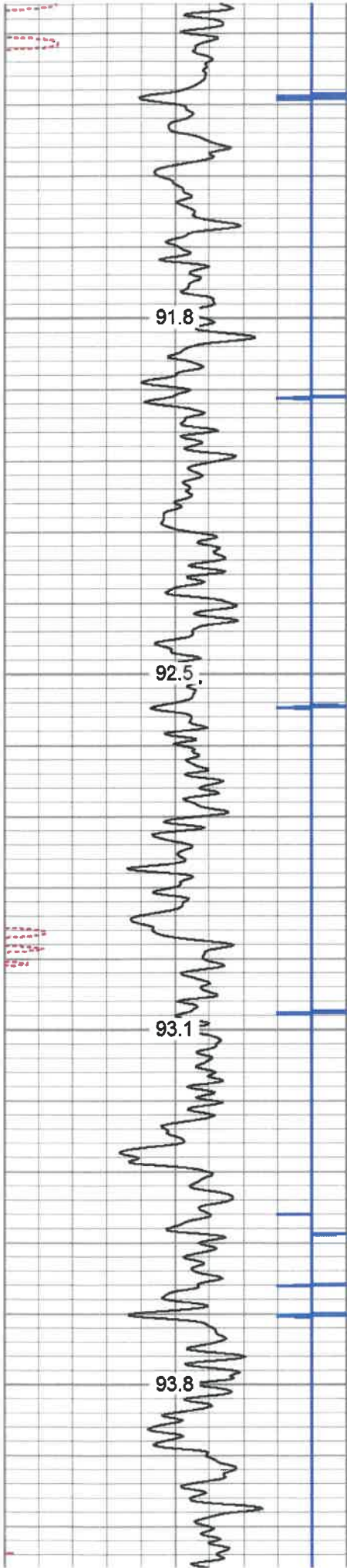
3400





3700
3750
3800
3850



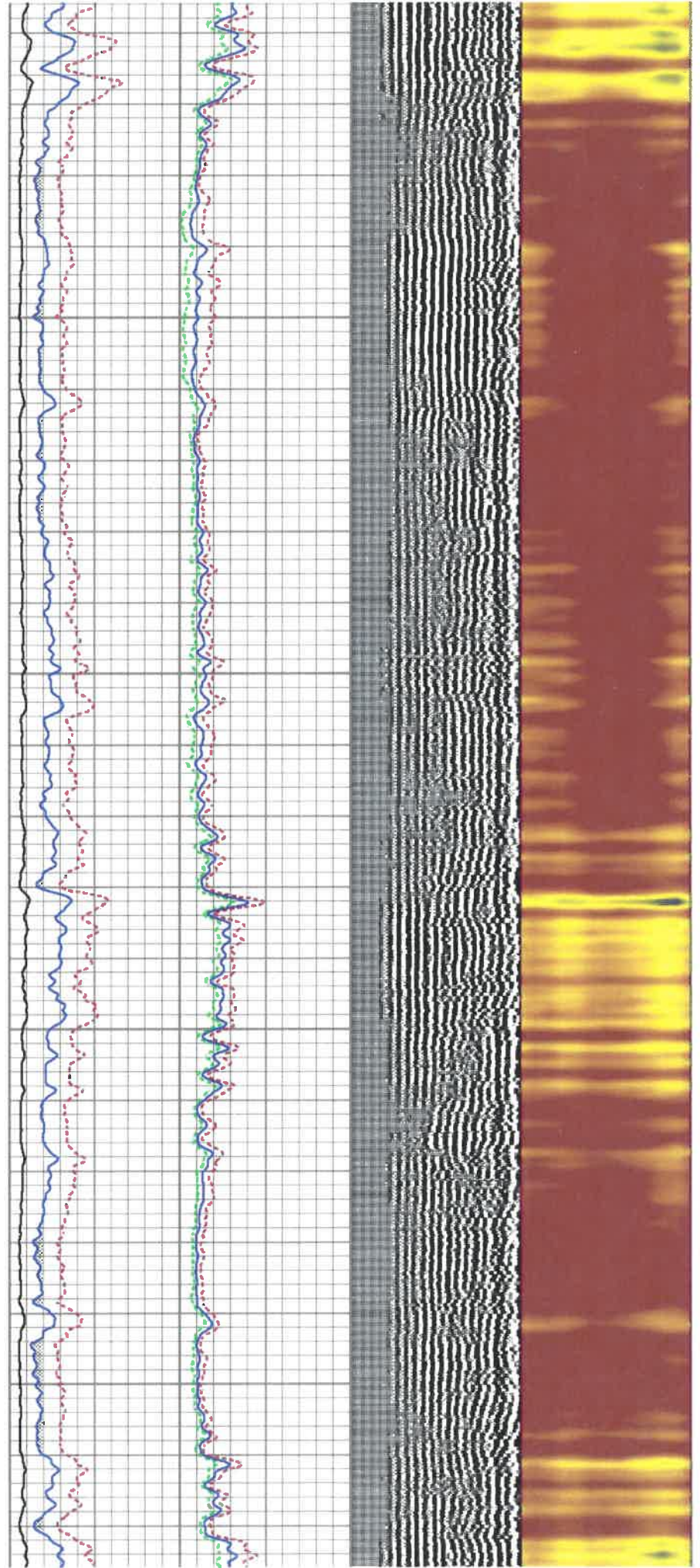


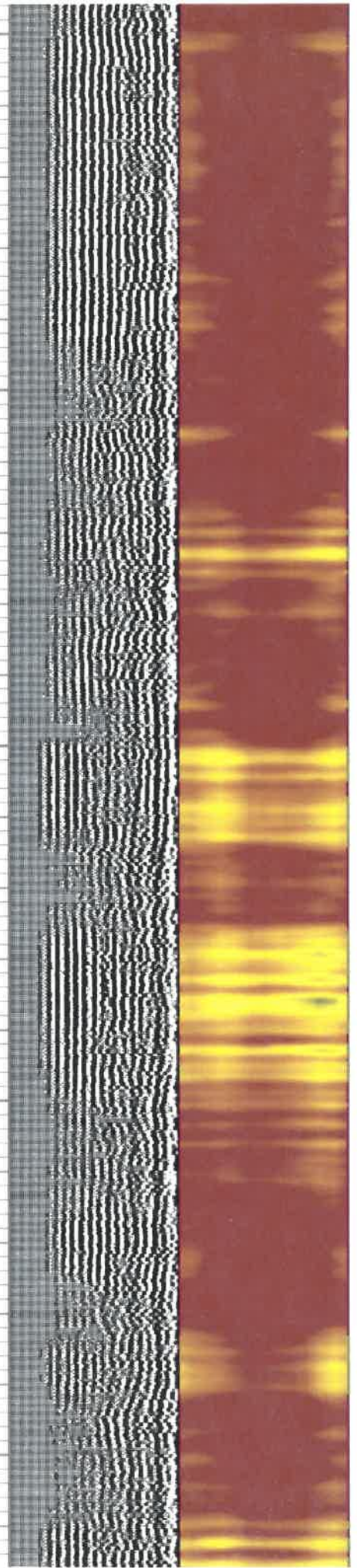
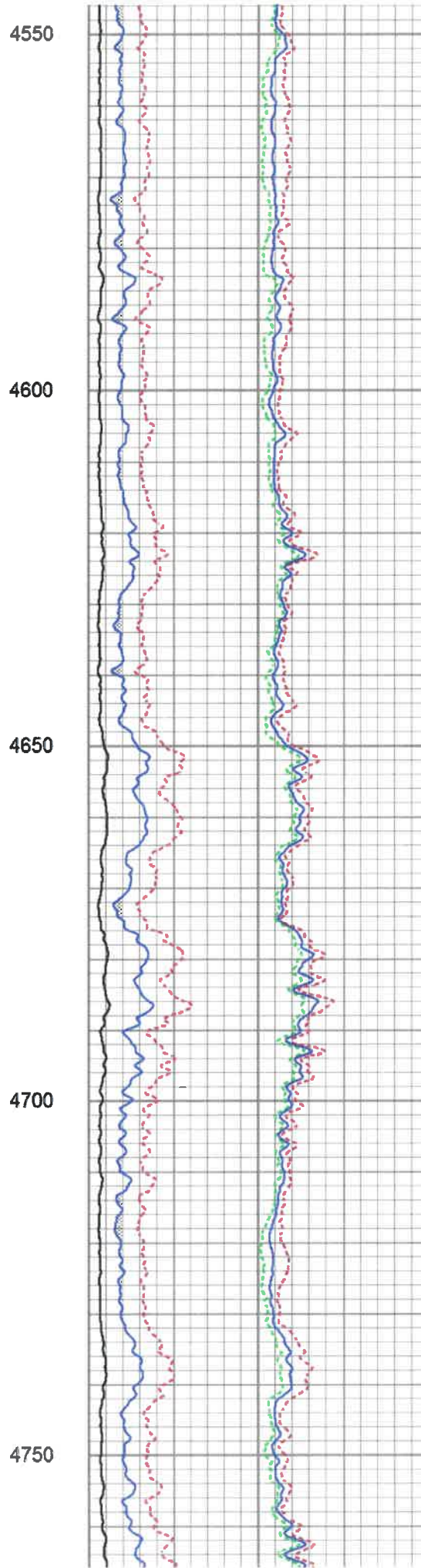
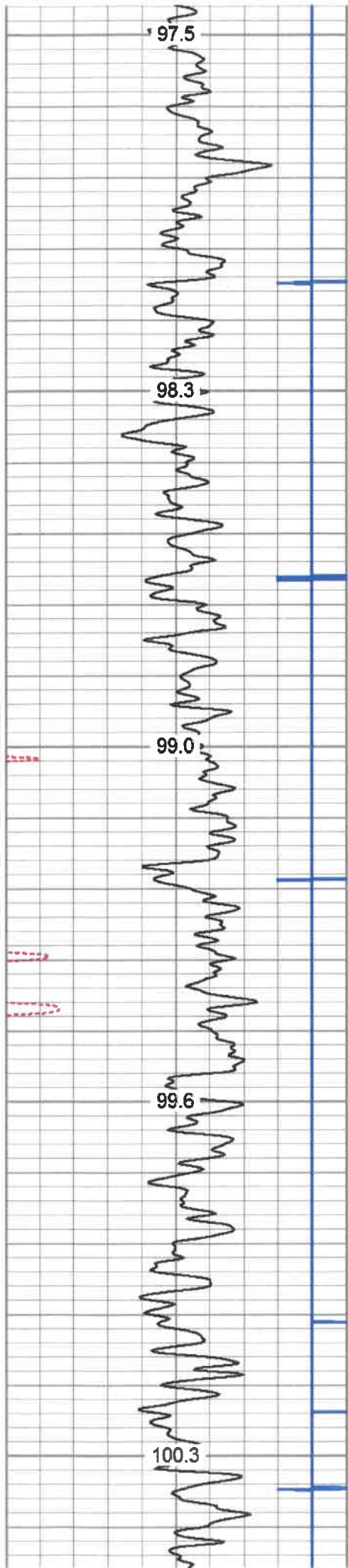
4150

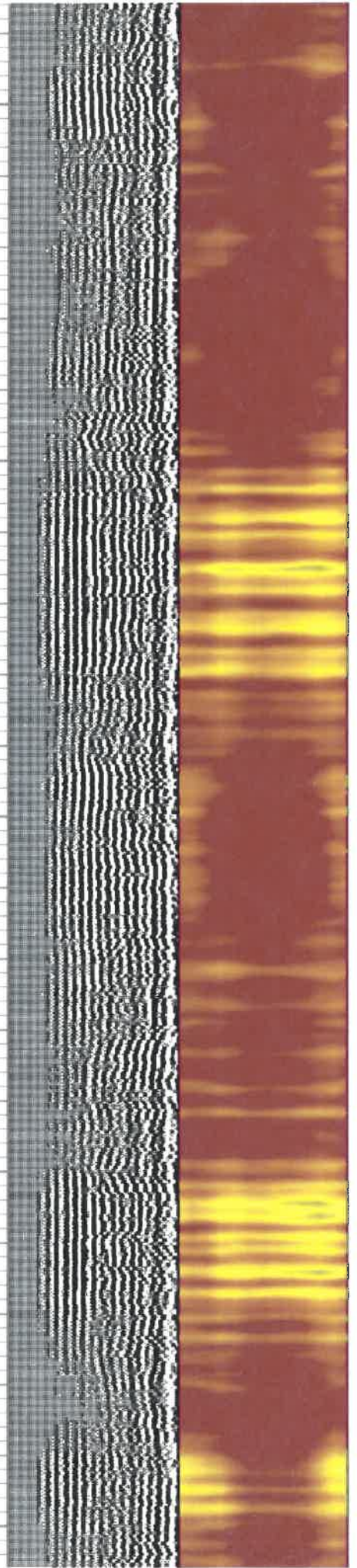
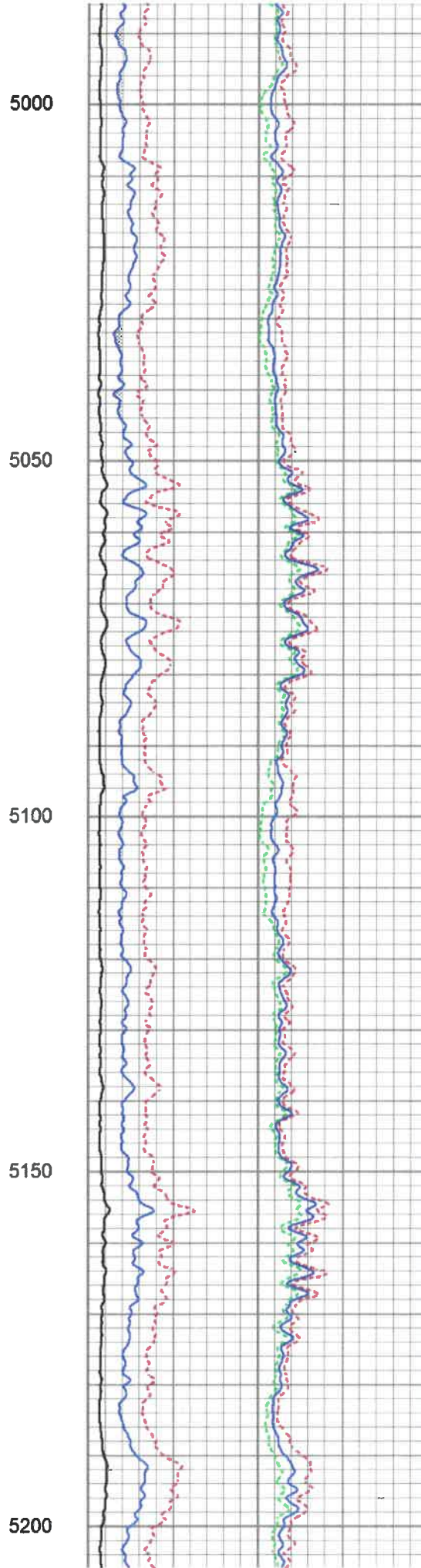
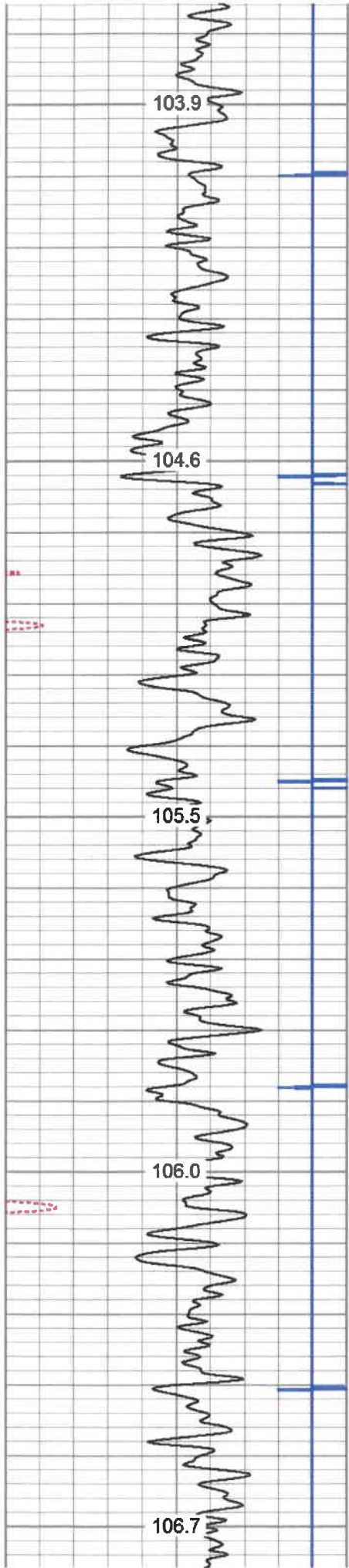
4200

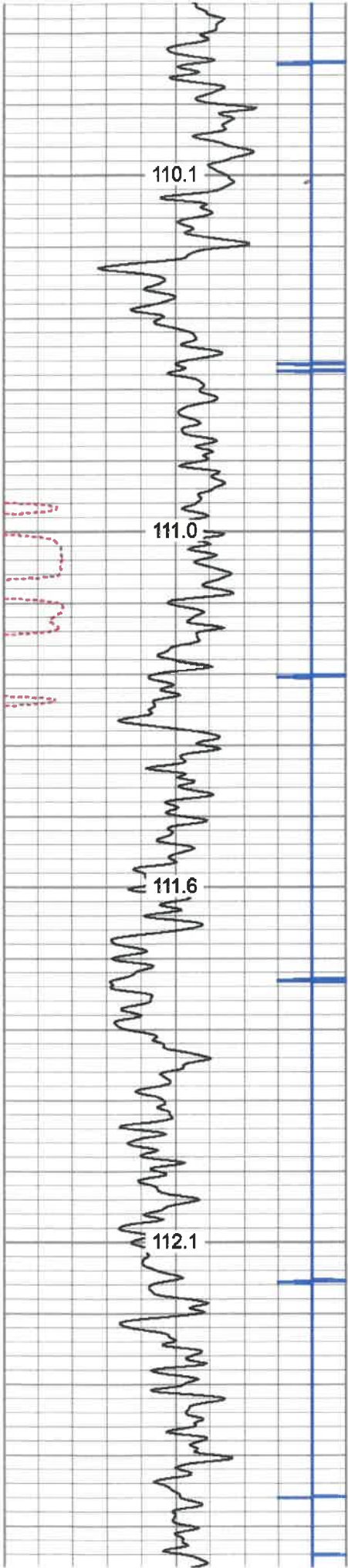
4250

4300







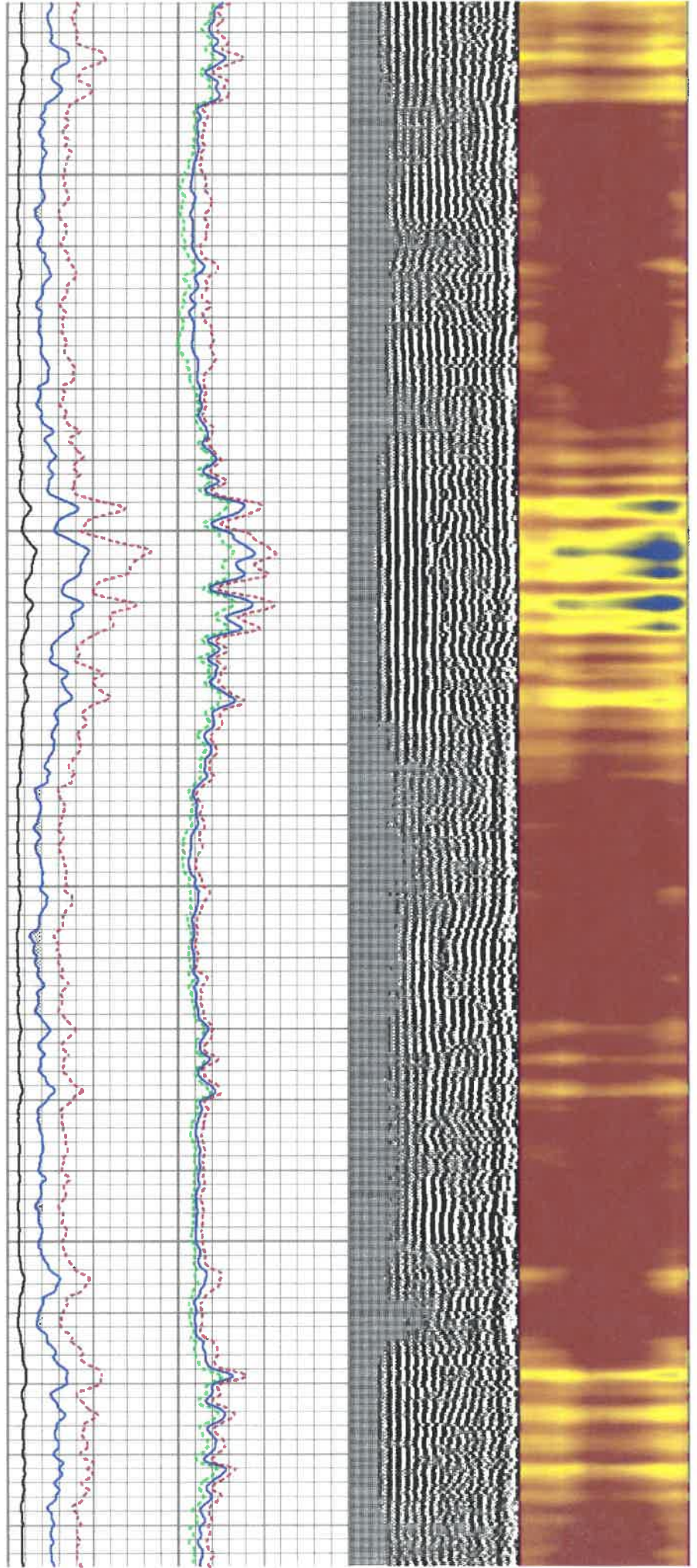


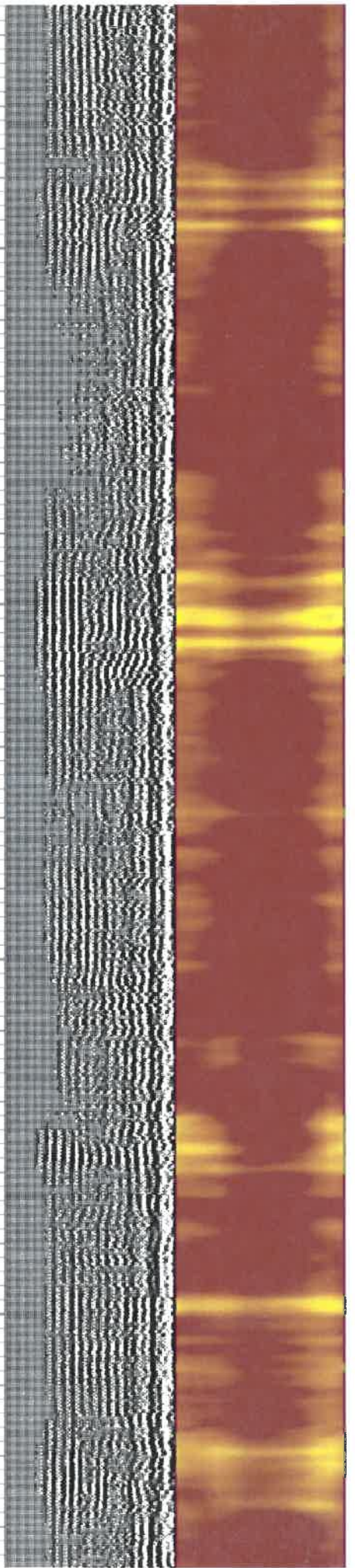
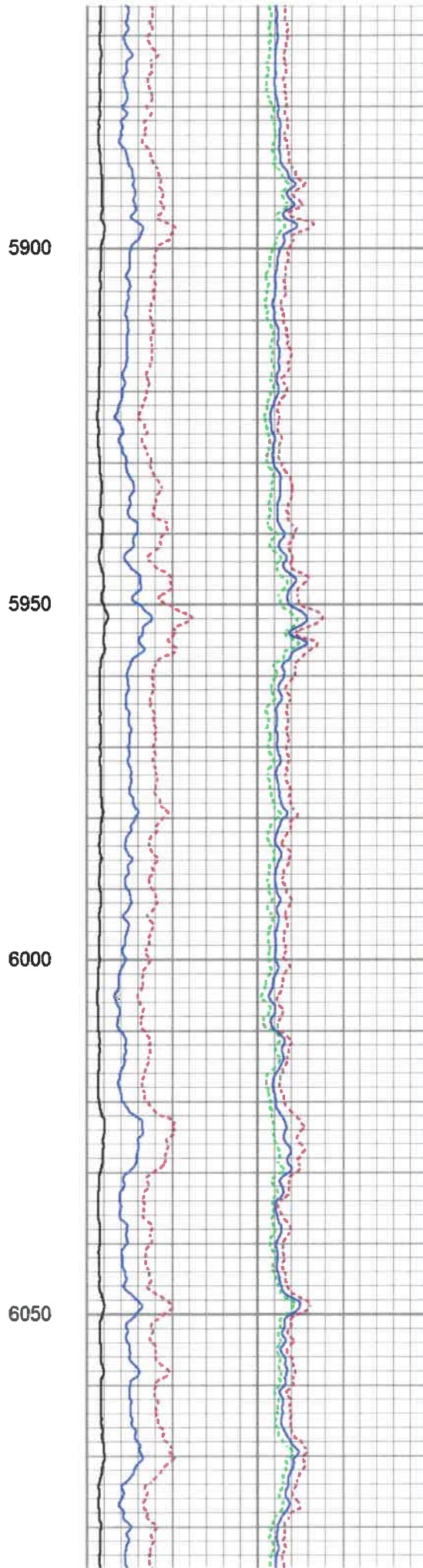
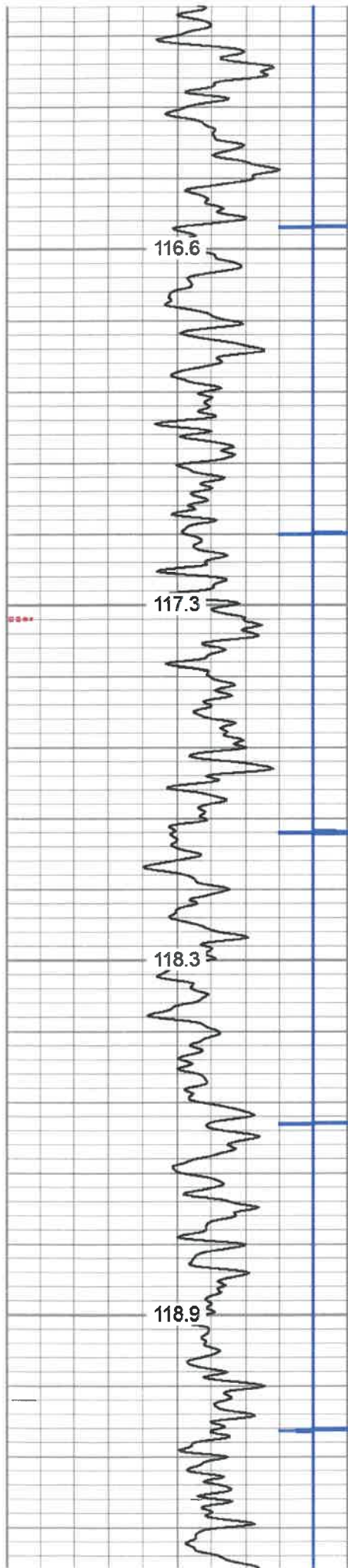
5450

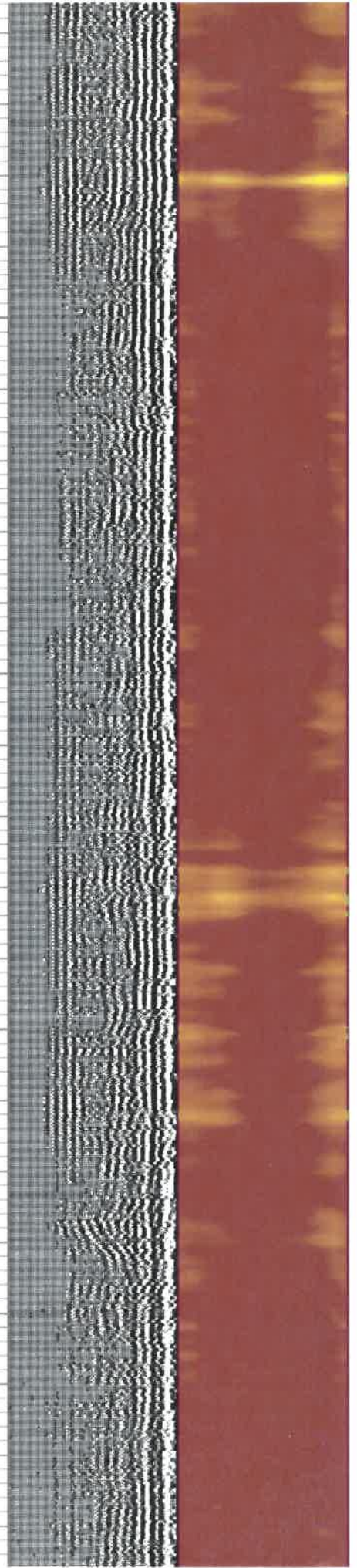
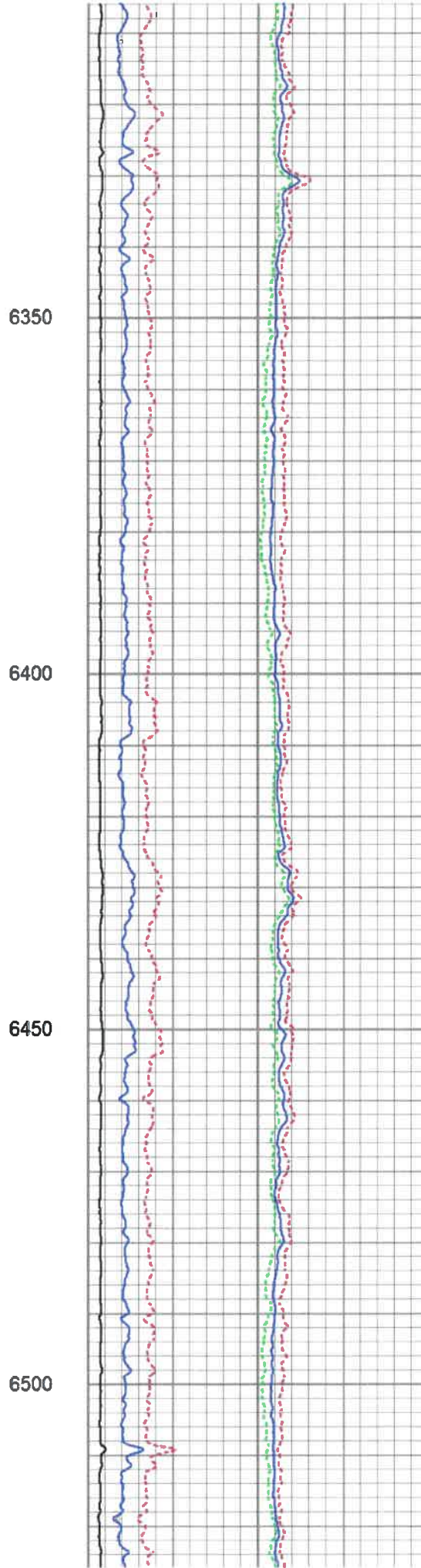
5500

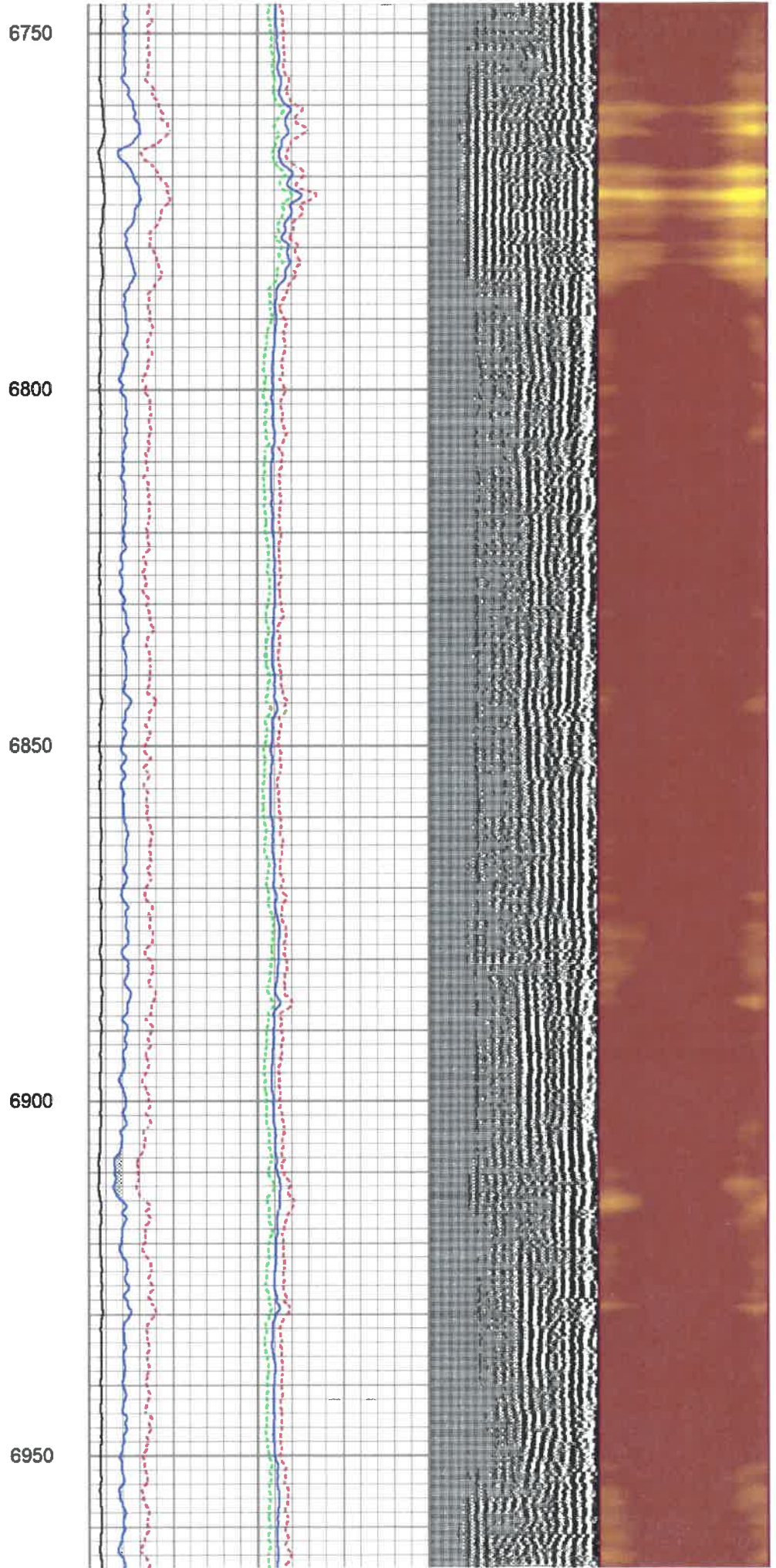
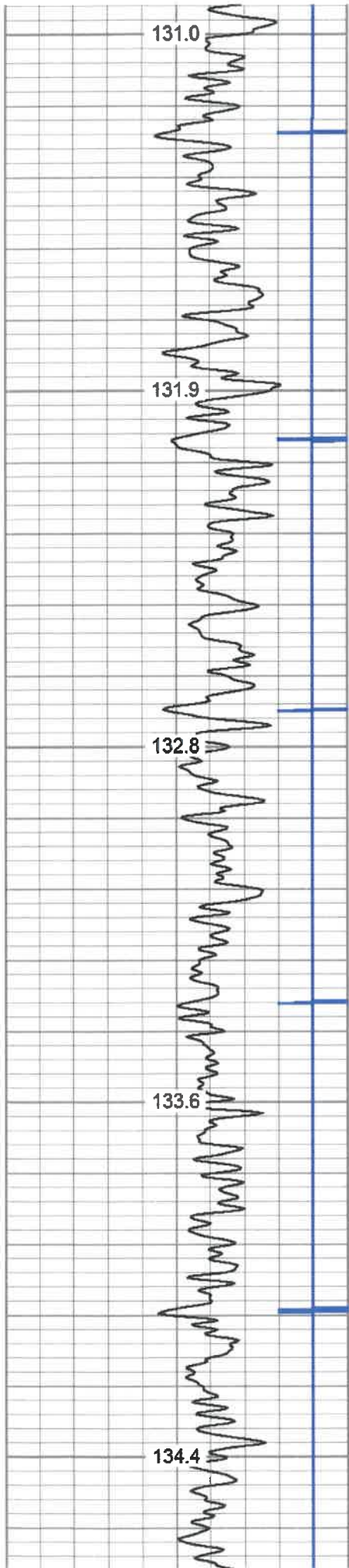
5550

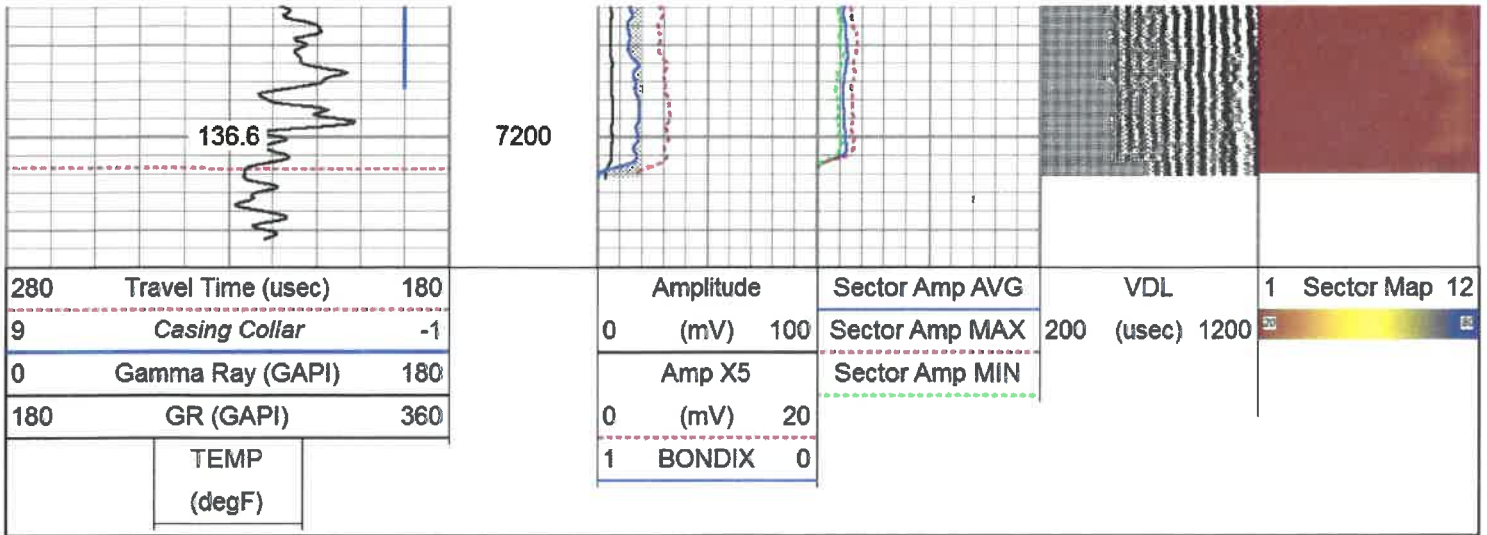
5600









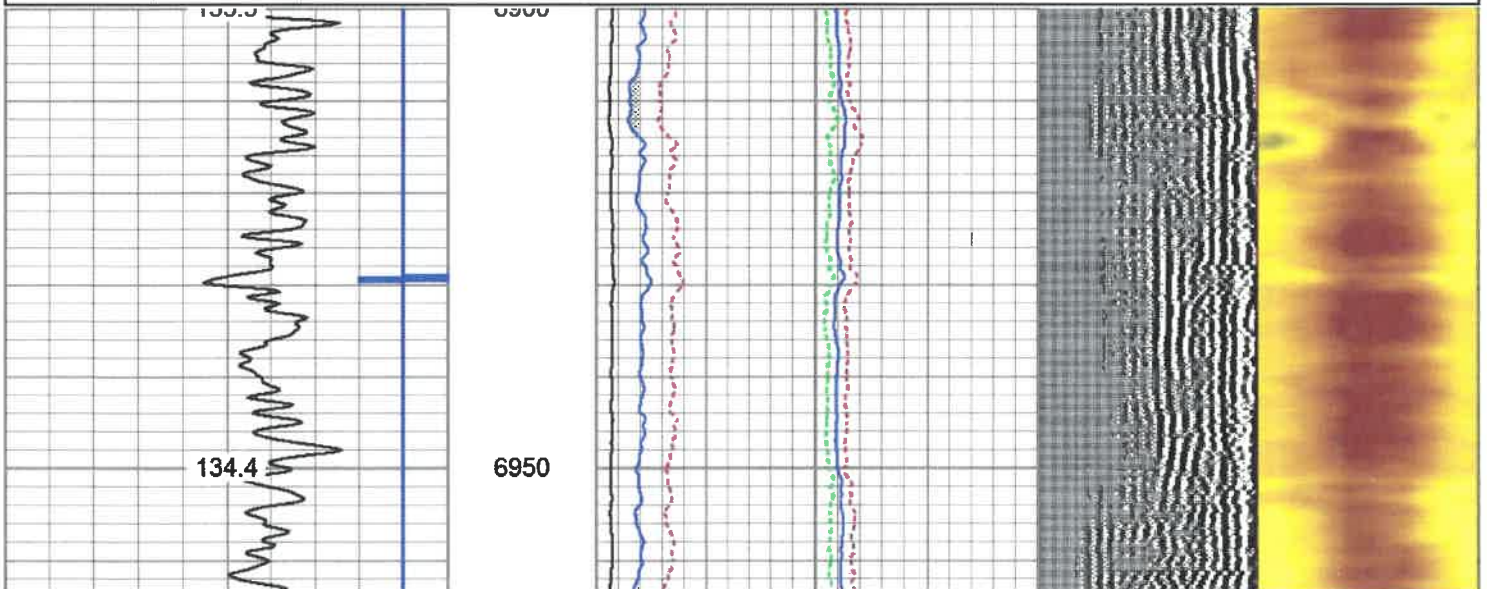
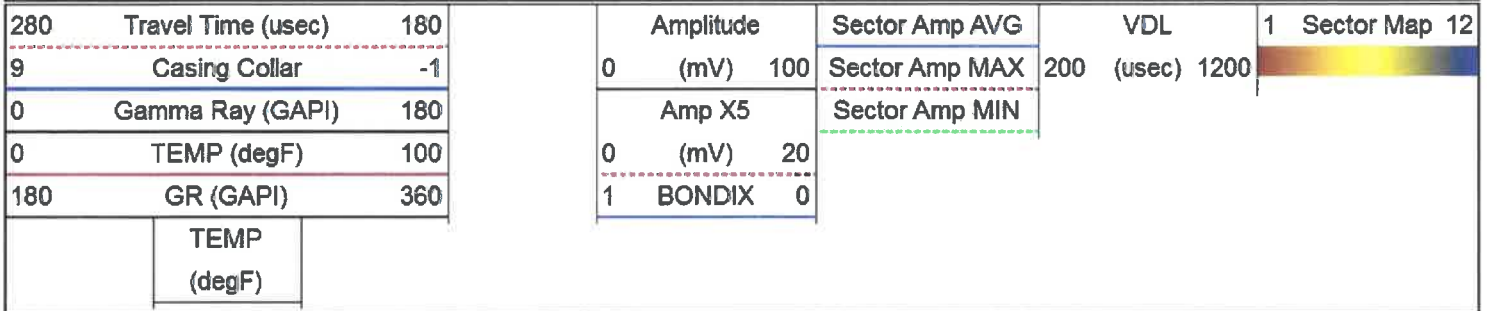


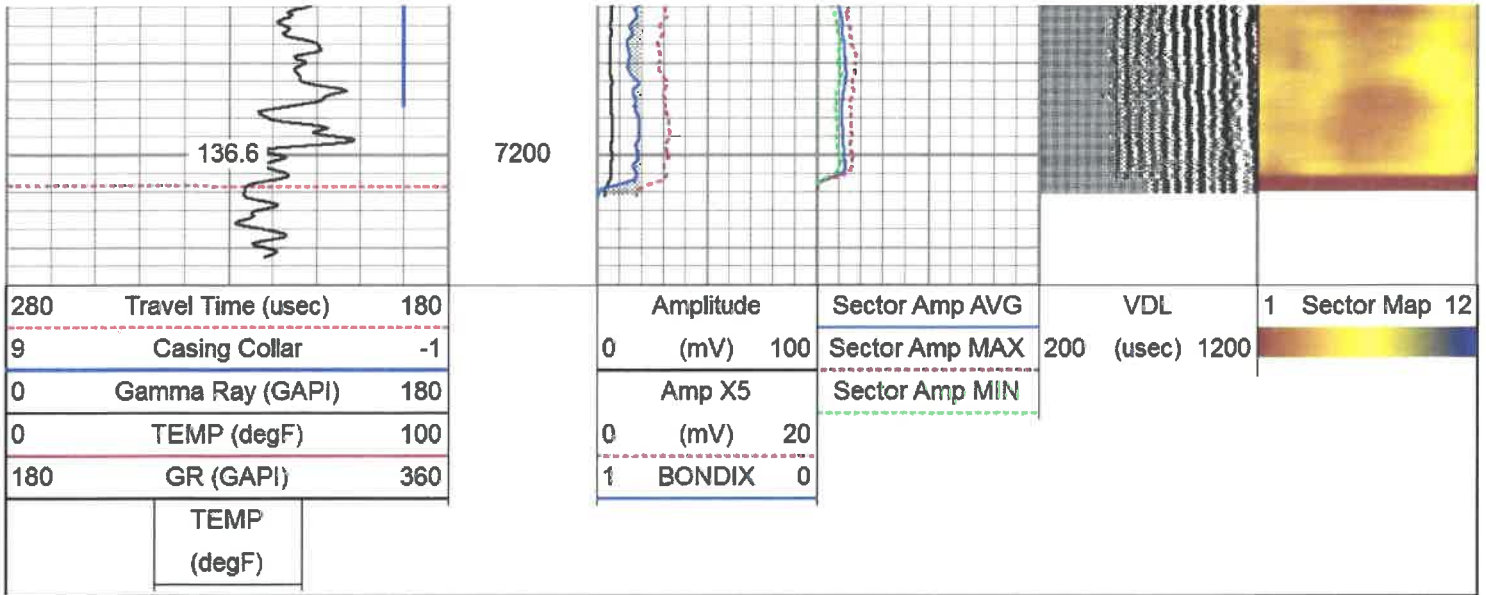
MAIN LOG 1500 PSI



REPEAT PASS

Database File e:\anterob.db
 Dataset Pathname REPEAT1
 Presentation Format antero
 Dataset Creation Tue Sep 03 13:54:48 2019
 Charted by Depth in Feet scaled 1:240





REPEAT PASS

Log Variables

Database: \anterob.db
Dataset field/well/run1/pass2.11/_vars_

Top - Bottom

BHTEMP_Src	BOREID	BOTTEMP	CASEID	CASEOD	CASETHCK	CASEWGHT
TEMP	in 7.875	degF 100	in 4.54	in 5.5	in 0	lb/ft 23
IMGCCCLTH	IMGRWCSRC	MAXAMPL	MINAMPL	MinAPIWall	MINATTN	PERFS
0.15	Ecc-Cor	mV 71.9	mV 3.5	in 0	db/ft 0.8	No
PPT	SRFTEMP	TDEPTH				
usec 219	degF 0	ft 0				

Variable Description

BHTEMP_Src : BHTEMP Input Source Selector
 BOREID : Borehole I.D.
 BOTTEMP : Bottom Hole Temperature
 CASEID : Casing I.D.
 CASEOD : Casing O.D.
 CASETHCK : Casing Thickness
 CASEWGHT : Casing Weight
 IMGCCCLTH : IMG Computed CCL threshold: fraction over nominal
 IMGRWCSRC : IMG Remaining Wall computation source
 MAXAMPL : Maximum Amplitude
 MINAMPL : Minimum Amplitude
 MinAPIWall : Minimum API Wall Thickness
 MINATTN : Minimum Attenuation
 PERFS : Perforation Flag
 PPT : Predicted Pipe Time
 SRFTEMP : Surface Temperature
 TDEPTH : Total Depth

CCL	19.20		CCL-312tekco (101) Tekco 3 1/8" 450 Deg. "F" SmCo Logging CCL	1.82	3.12	25.00	
			Tek-2.75 2 3/4" Tekco Adjustable Centralizer	2.73	2.75	25.00	
TEMP	13.04						
WVFSYNC	13.04						
WVFCAL	13.04						
WVFS12	11.75						
WVFS11	11.75						
WVFS10	11.75						
WVFS9	11.75						
WVFS8	11.75						
WVFS7	11.75						
WVFS6	11.75						
WVFS5	11.75						
WVFS4	11.75						
WVFS3	11.75						
WVFS2	11.75						
WVFS1	11.75						
WVF3FT	11.00						
WVF5FT	10.00						
WVFTEMP	6.67						
				SCBL-Tek12 (T12_01) Tekco 400 Deg F 12 Sector RIB with Temp	9.13	3.25	135.00
			Tek-2.75 2 3/4" Tekco Adjustable Centralizer	2.73	2.75	25.00	
			GR-Tek-Co 2 3/4 (0111) Tekco 2 3/4" 400 Deg. F Logging Gamma Ray	3.67	2.75	40.00	
GR	1.31		Titan-1.4375_Cap Titan 1 7/16" Cap	0.27	1.44	1.00	
Dataset: anterob.db: field/well/run1/pass2.10 Total length: 21.37 ft Total weight: 256.00 lb O.D.: 3.25 in							