



**RADIAL BOND LOG**  
**GAMMA RAY**  
**VDL,CCL**

Company		ANTERO RESOURCES CORPORATION	
Well		OXFORD 97 DHS	
Field		MARCELLUS	
County		DODDRIDGE	
State		WV	
Company		ANTERO RESOURCES CORPORATION	
Well		OXFORD 97 DHS	
Field		MARCELLUS	
County		DODDRIDGE	
State		WV	
Location:		API #: 47017064840000	
Permanent Datum		AFE A06741	
Log Measured From		SEC TWP RGE	
Drilling Measured From		Elevation	
Date		8-30-19	
Run Number		1	
Depth Driller		17199'	
Depth Logger		7109'	
Bottom Logged Interval		7109'	
Top Log Interval		SURFACE	
Open Hole Size		N/A	
Type Fluid		WATER	
Density / Viscosity		N/A	
Max. Recorded Temp.		140.6 DEG	
Estimated Cement Top		SURFACE	
Time Well Ready		N/A	
Time Logger on Bottom		10:50	
Equipment Number		624874	
Location		BRIDGEPORT	
Recorded By		P DAVIDSON	
Witnessed By		D GANDEE	
Run Number		Bit	
From		To	
Size		Weight	
From		To	

<<< Fold Here >>>

All interpretations are opinions based on inferences from electrical or other measurements and we cannot and do not guarantee the accuracy or correctness of any interpretation, and we shall not, except in the case of gross or willful negligence on our part, be liable or responsible for any loss, costs, damages, or expenses incurred or sustained by anyone resulting from any interpretation made by any of our officers, agents or employees. These interpretations are also subject to our general terms and conditions set out in our current Price Schedule.

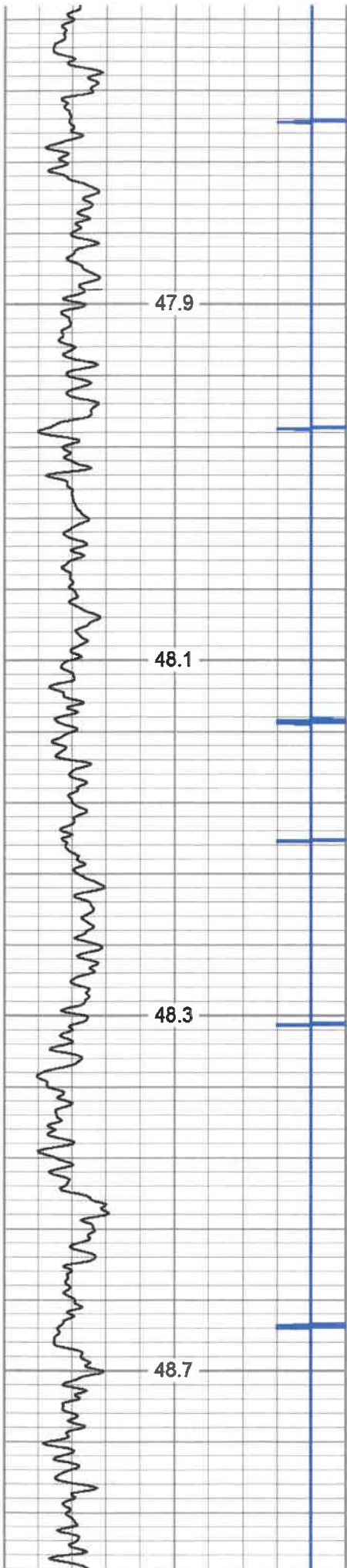
**Comments**

MARKER JOINT @5990'-6011'  
 LOG TD 7109'  
 CEMENT TOP @SURFACE  
 LOGGED UNDER 1500 PSI.

THANK YOU FOR CHOOSING KLX ENERGY



**MAIN PASS 1500 PSI**

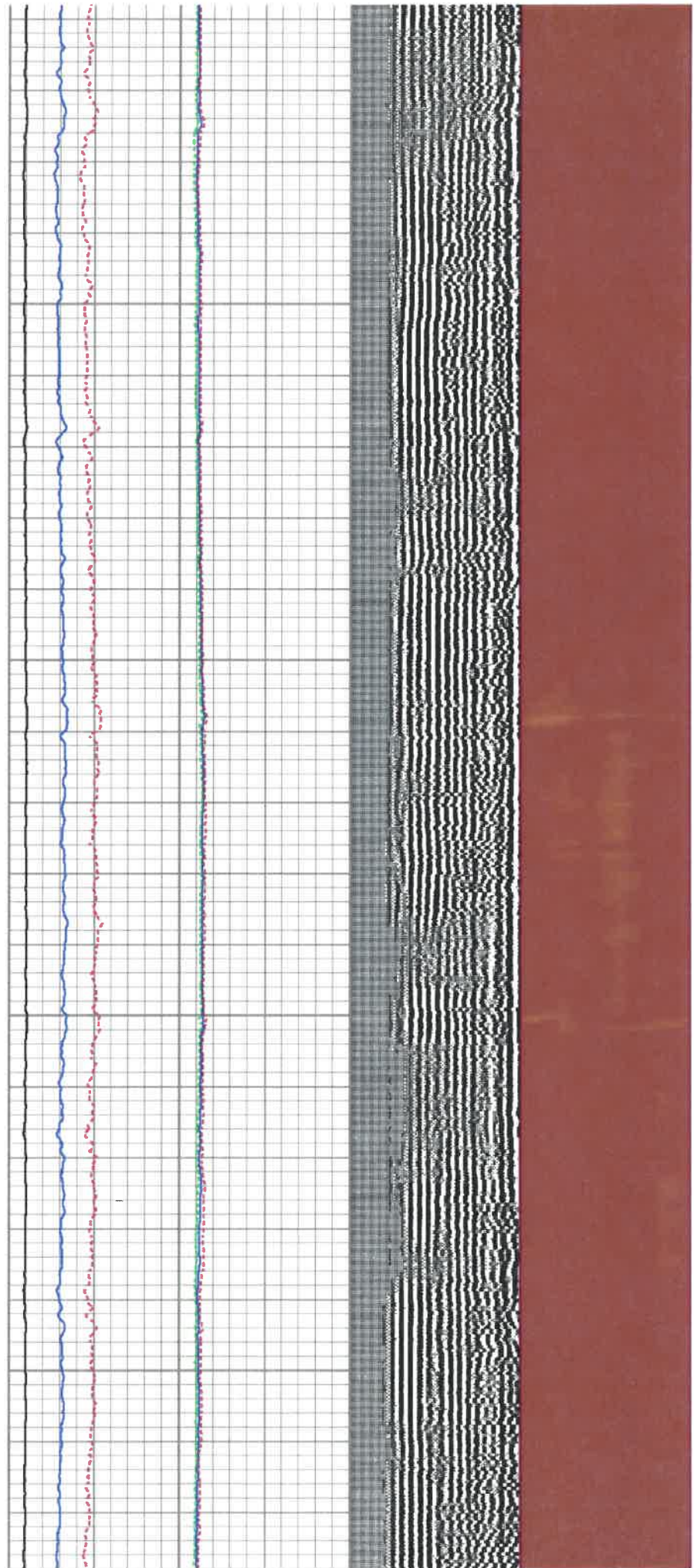


200

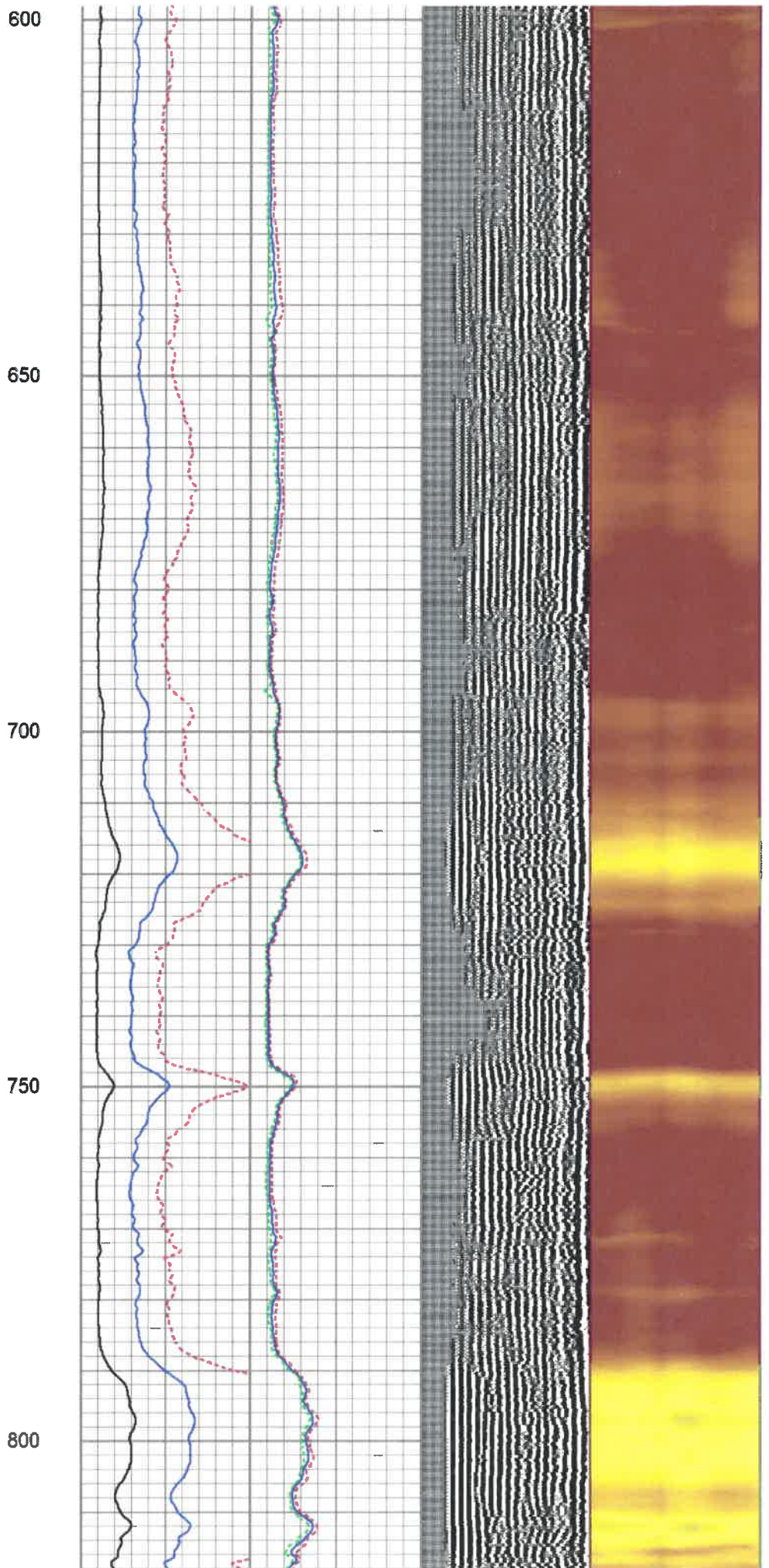
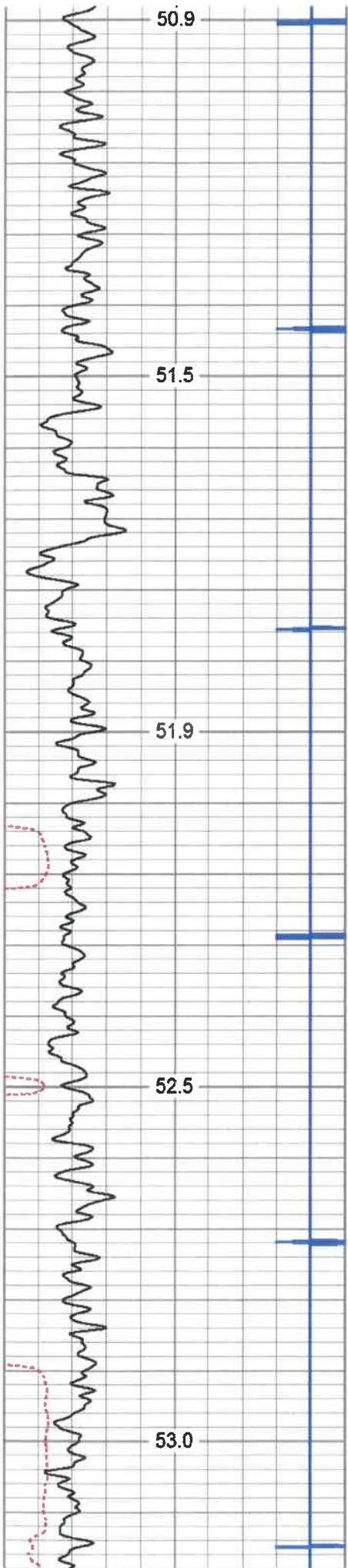
250

300

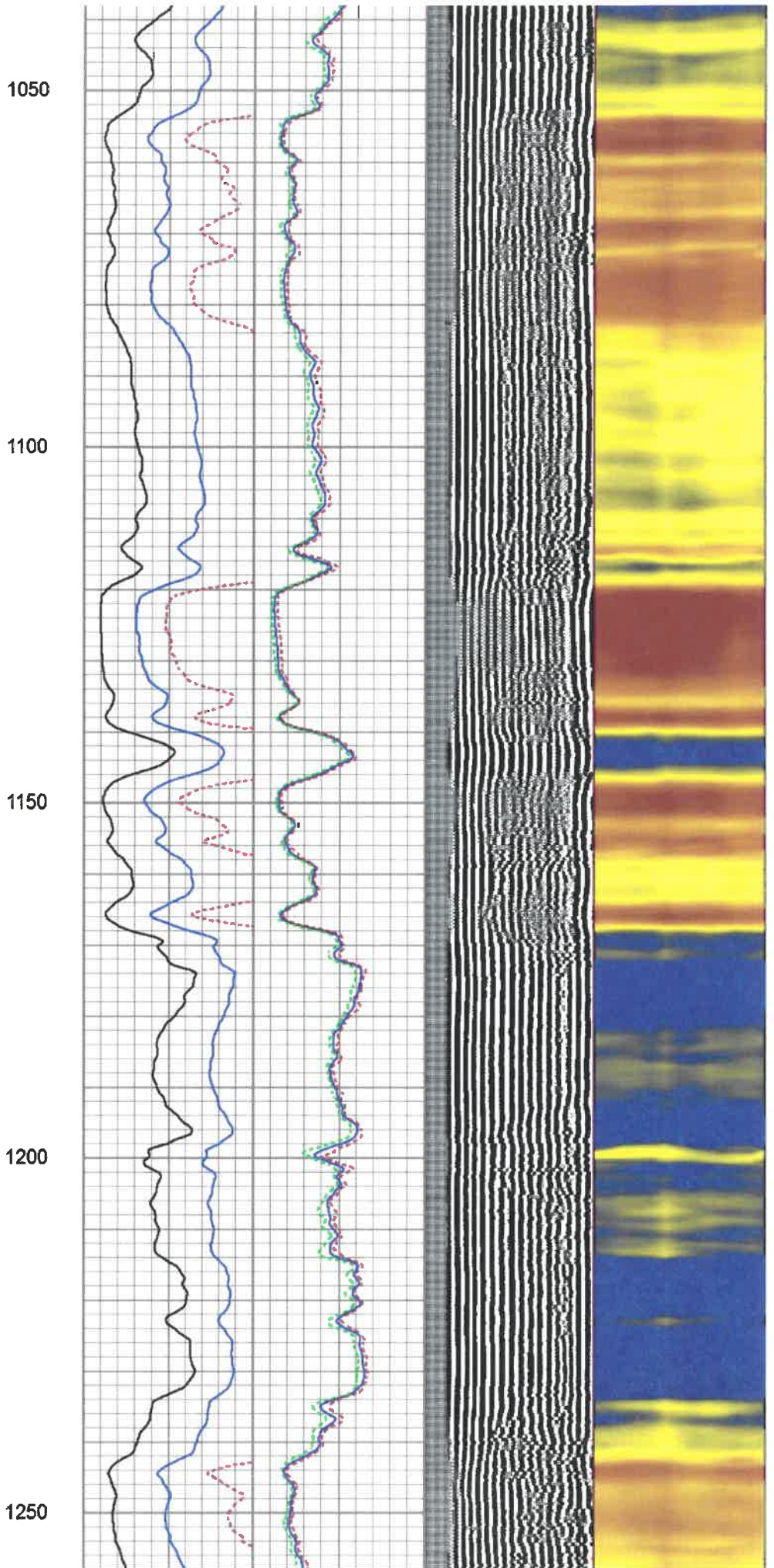
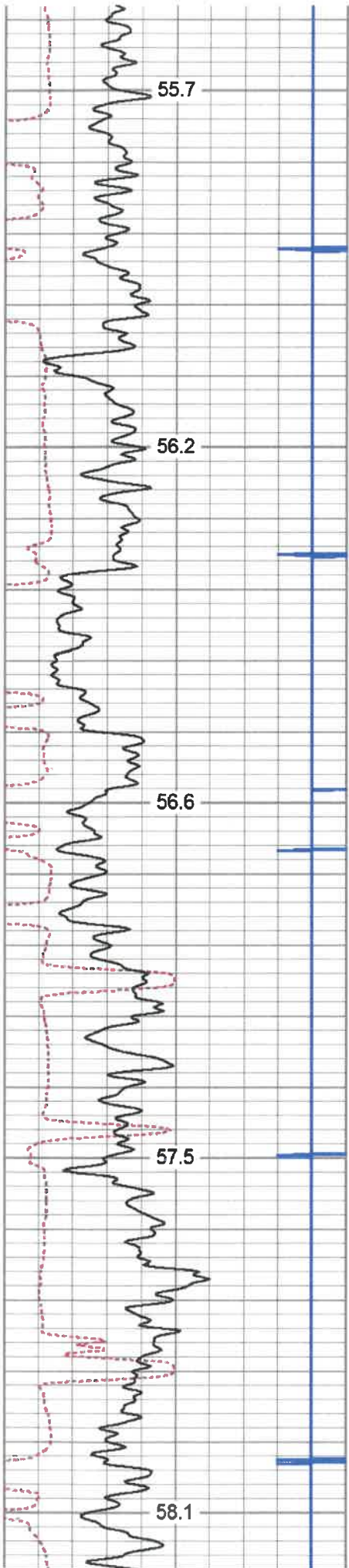
350



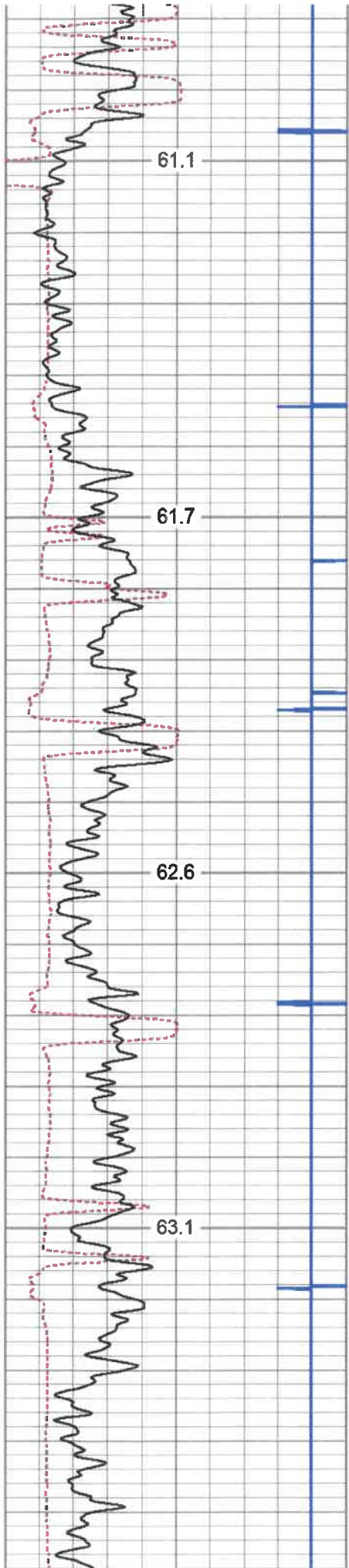










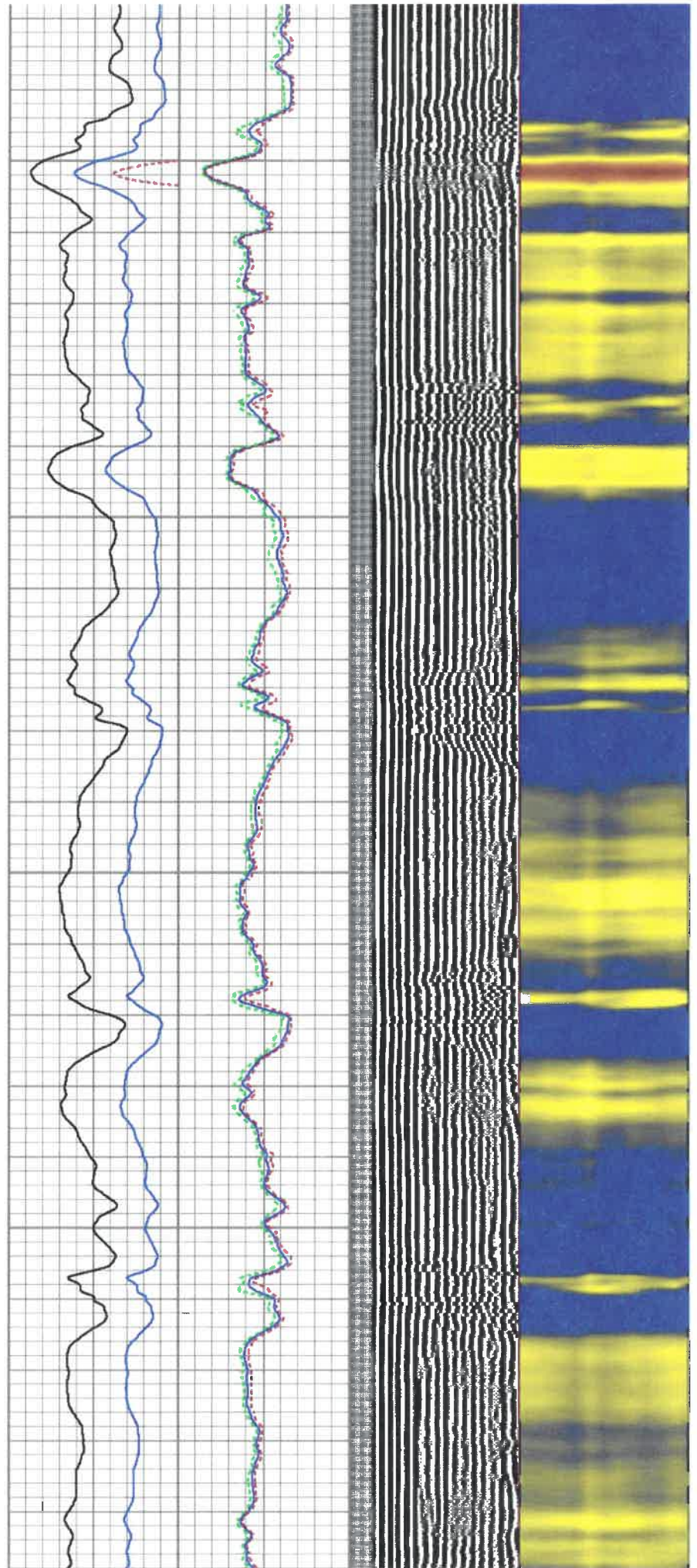


1500

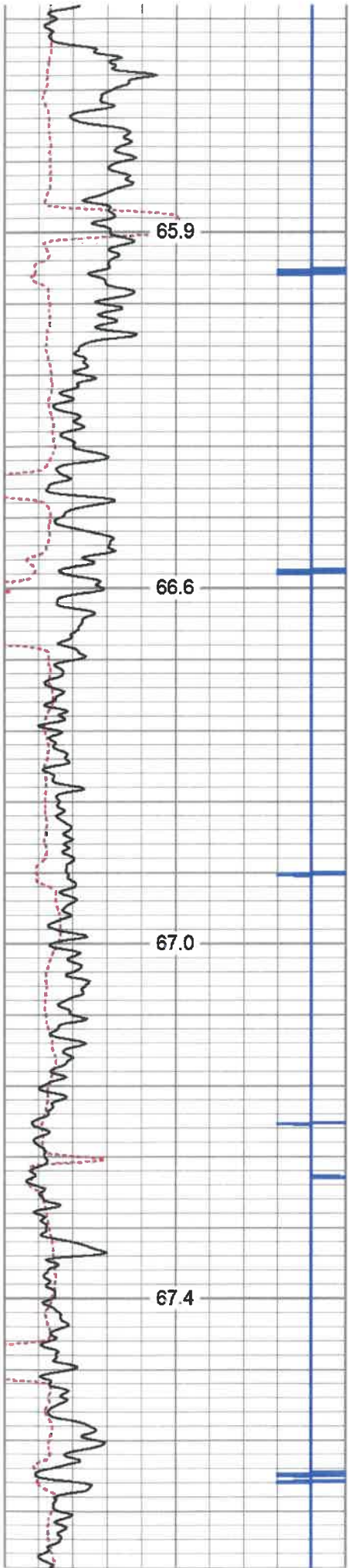
1550

1600

1650





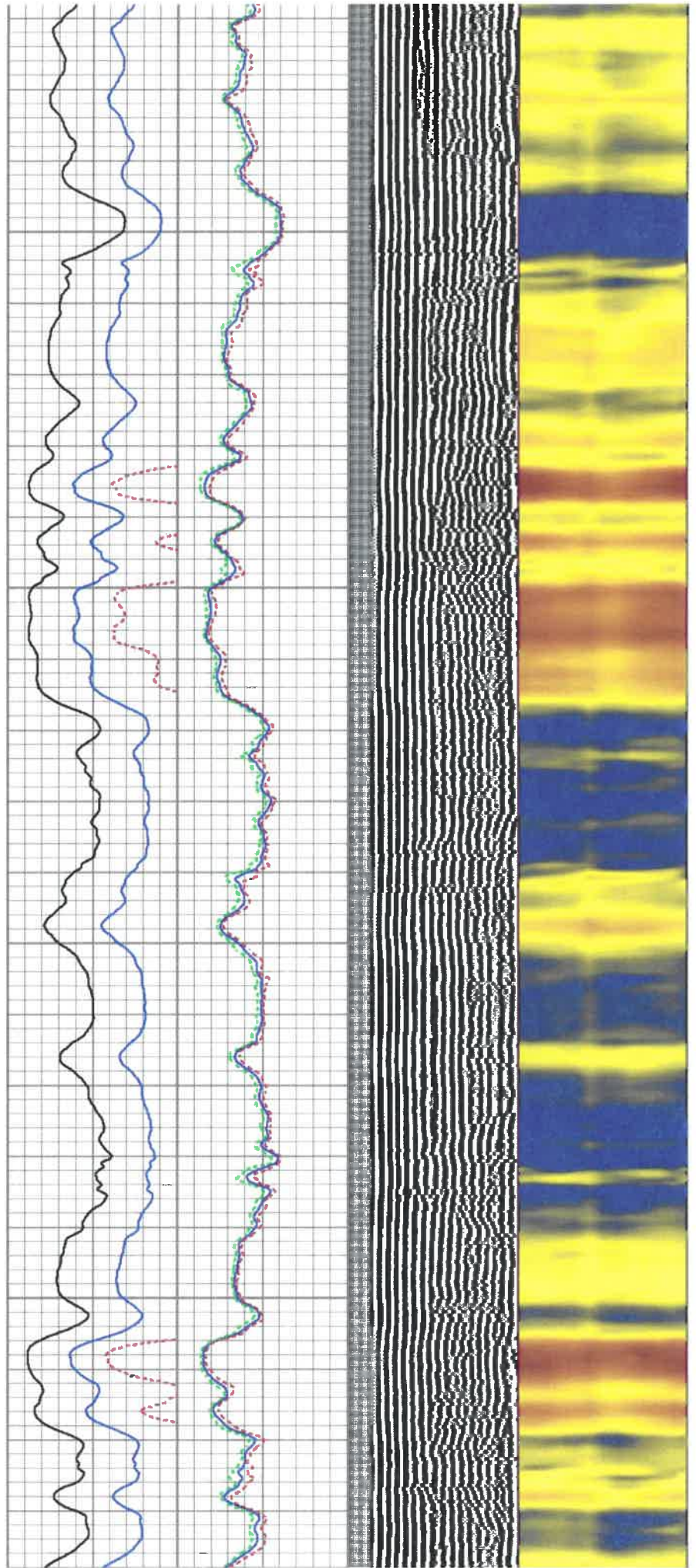


1950

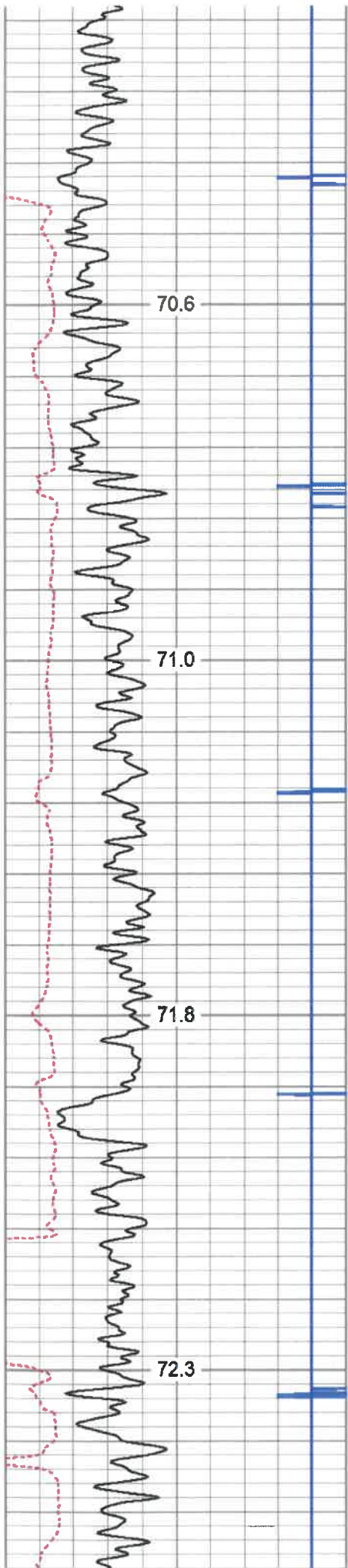
2000

2050

2100





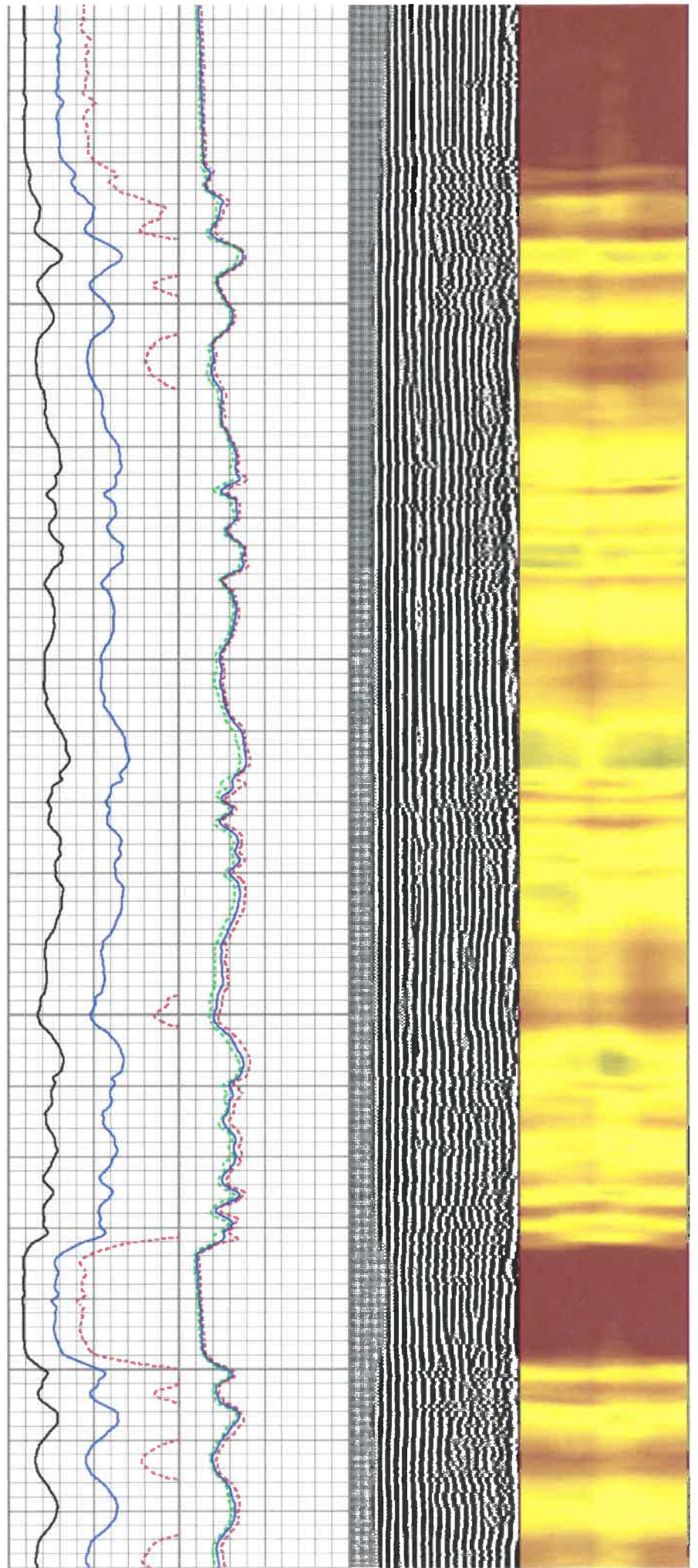


2400

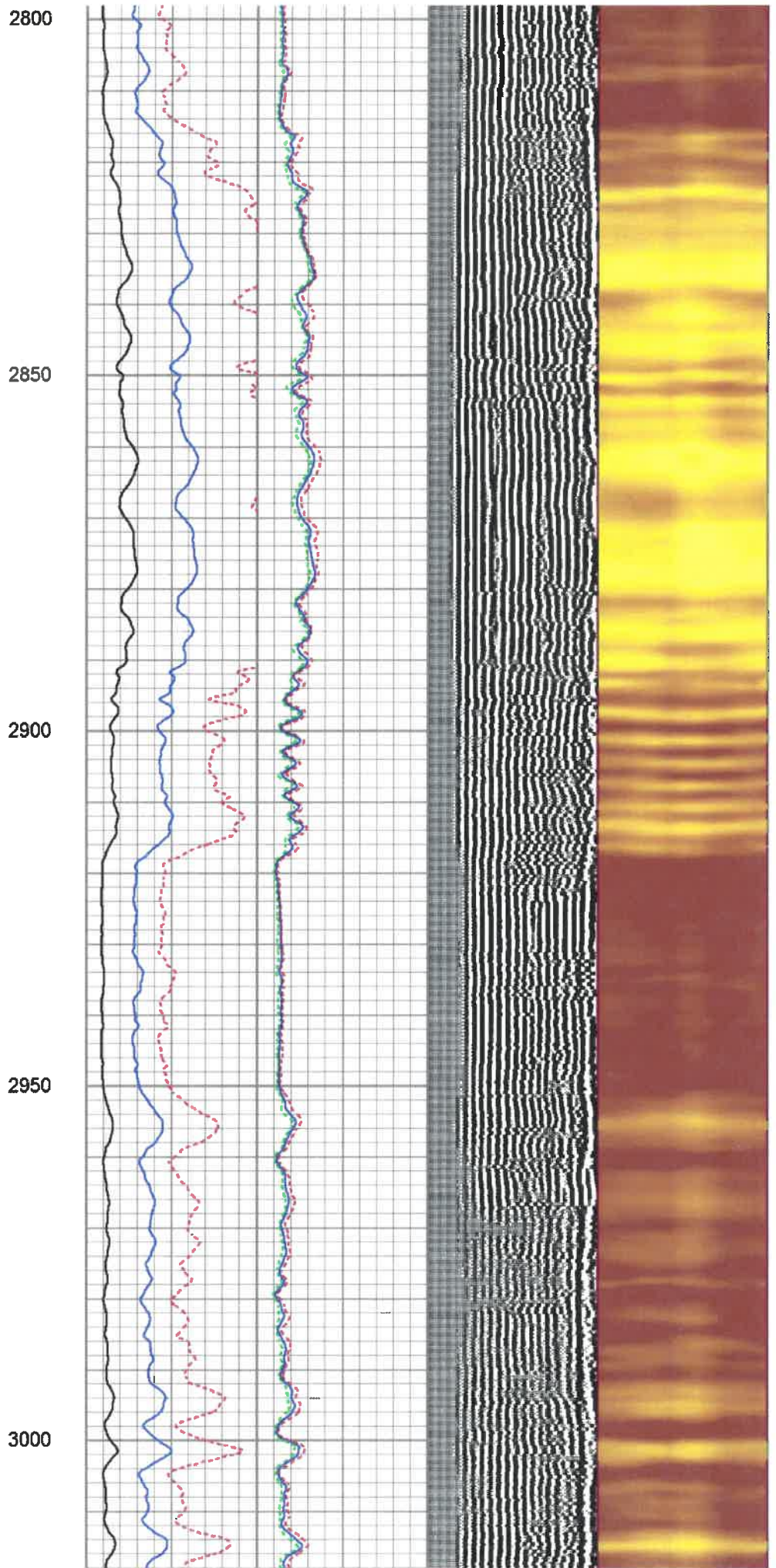
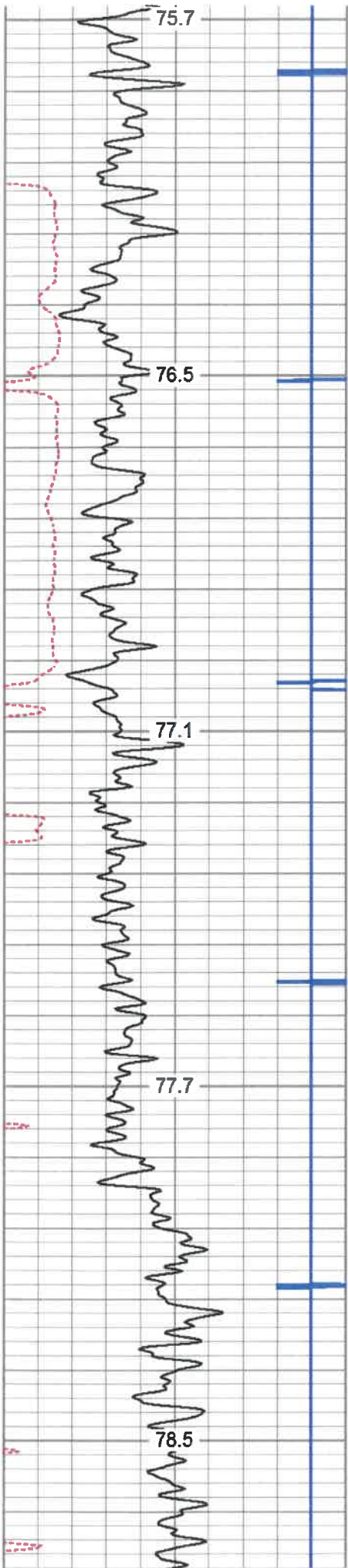
2450

2500

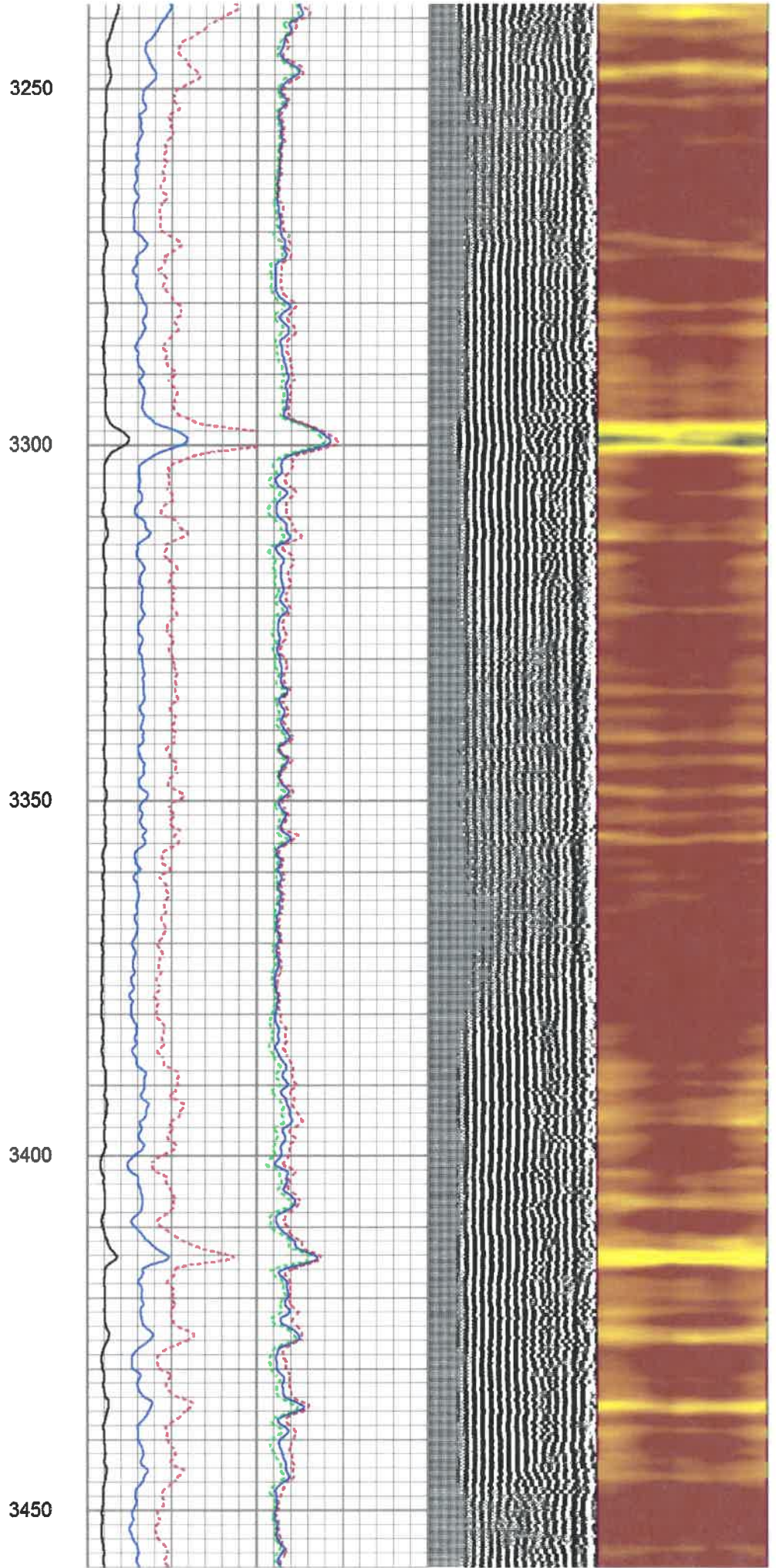
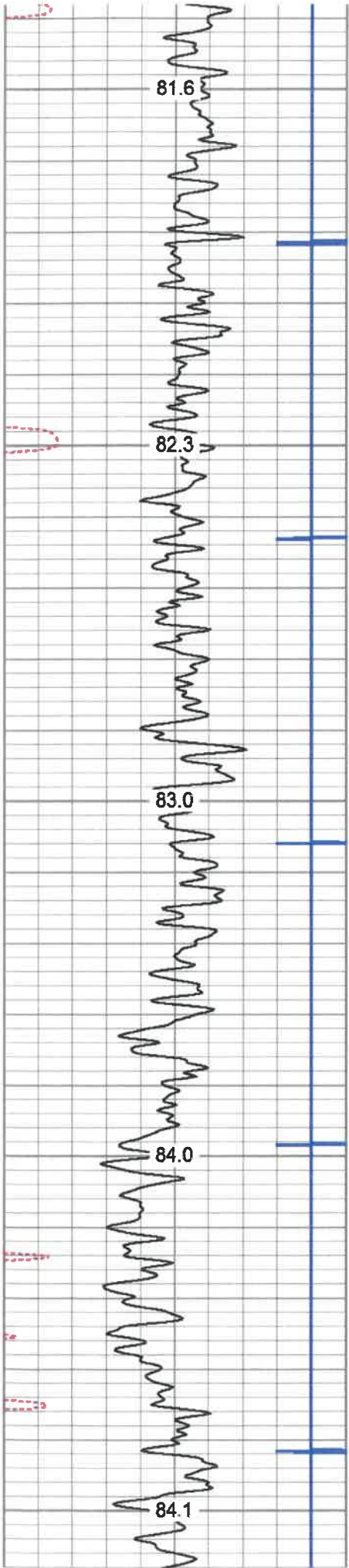
2550



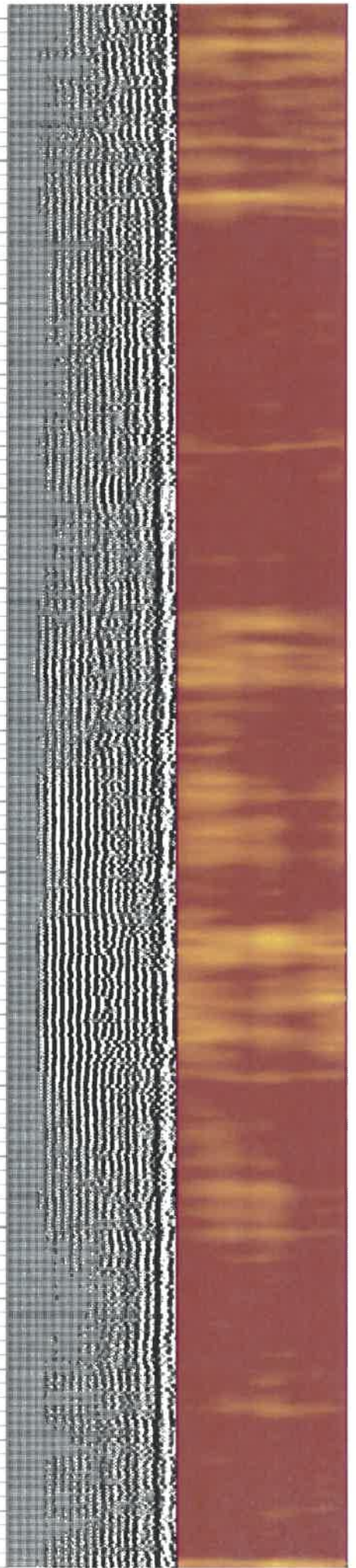
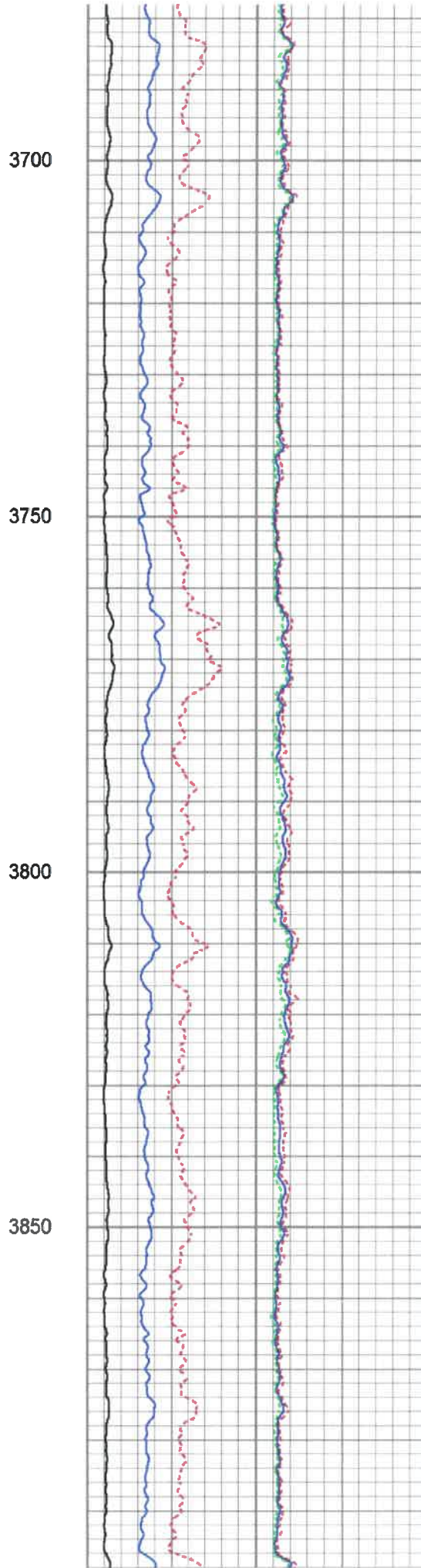
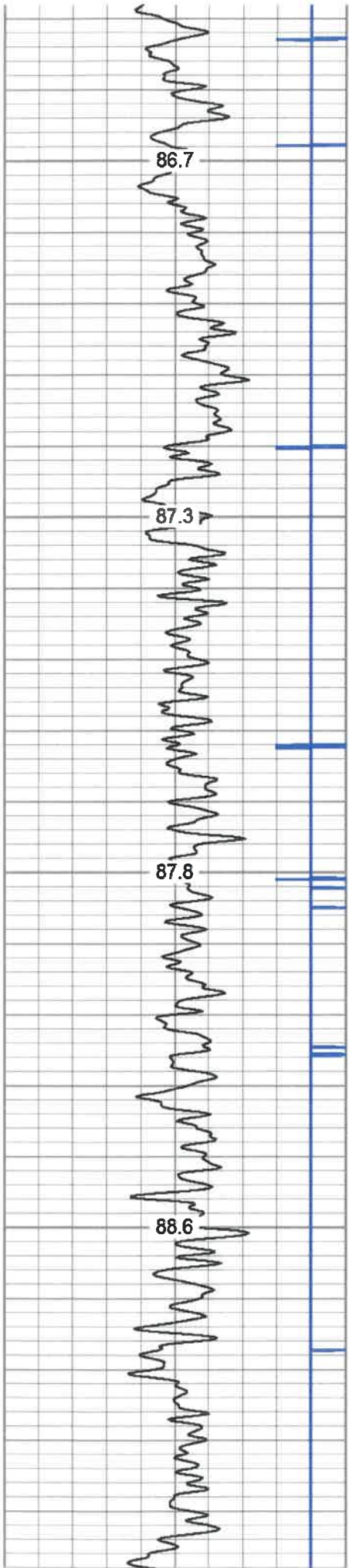




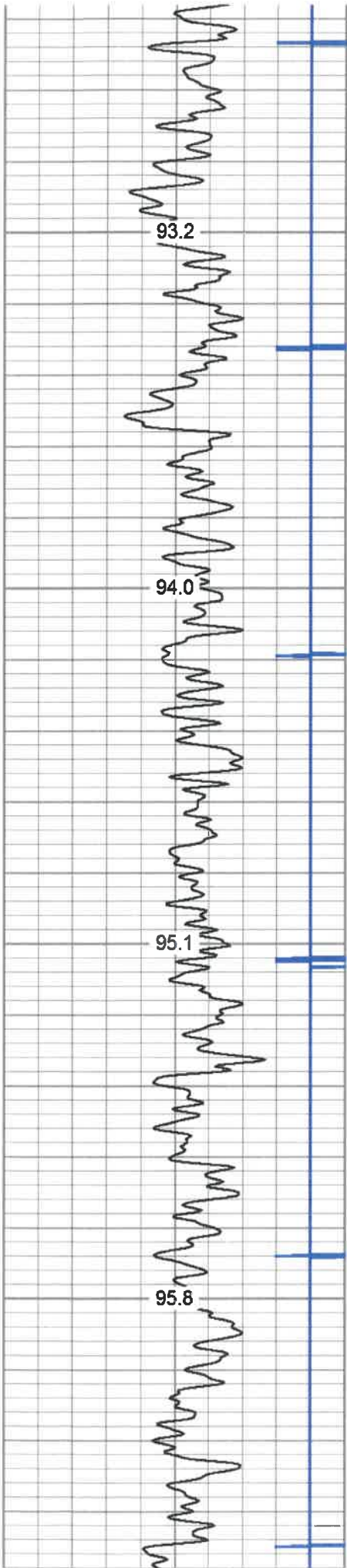










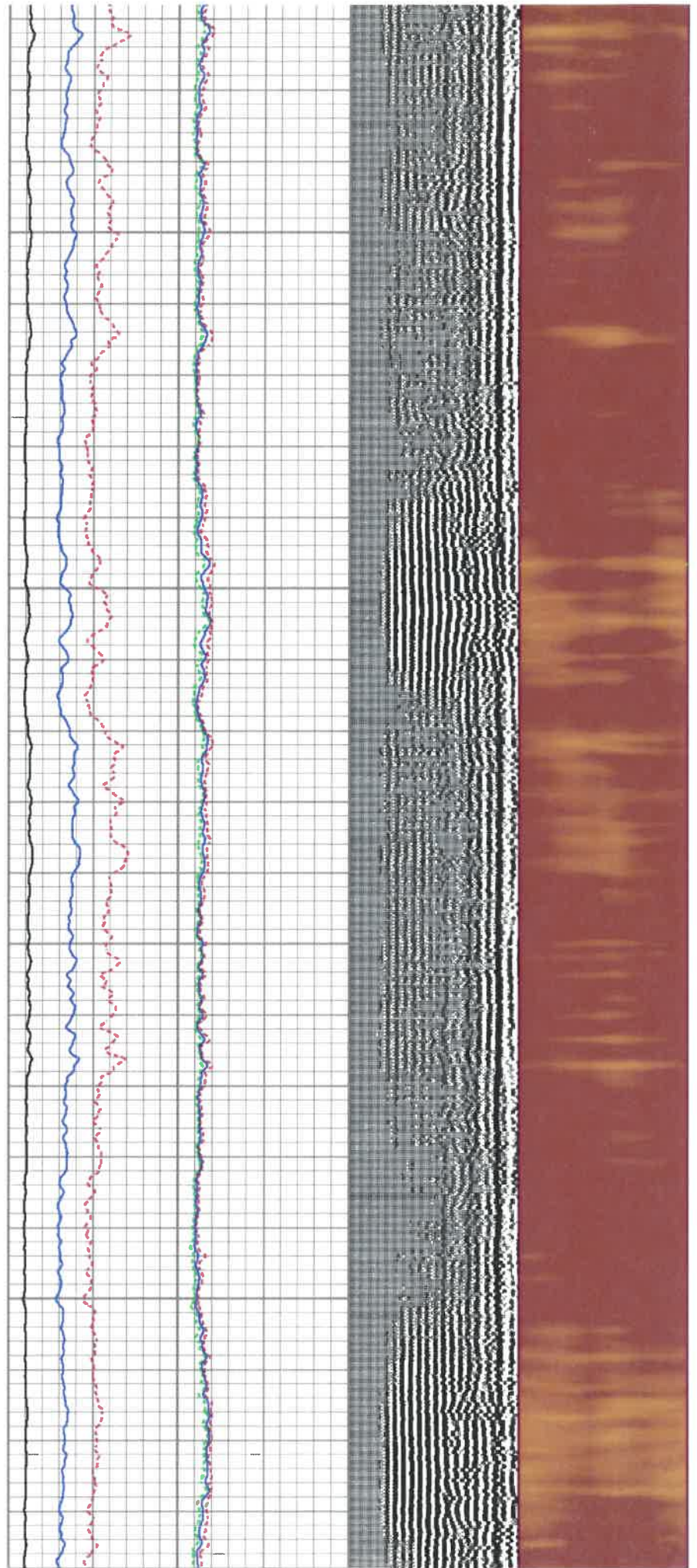


4150

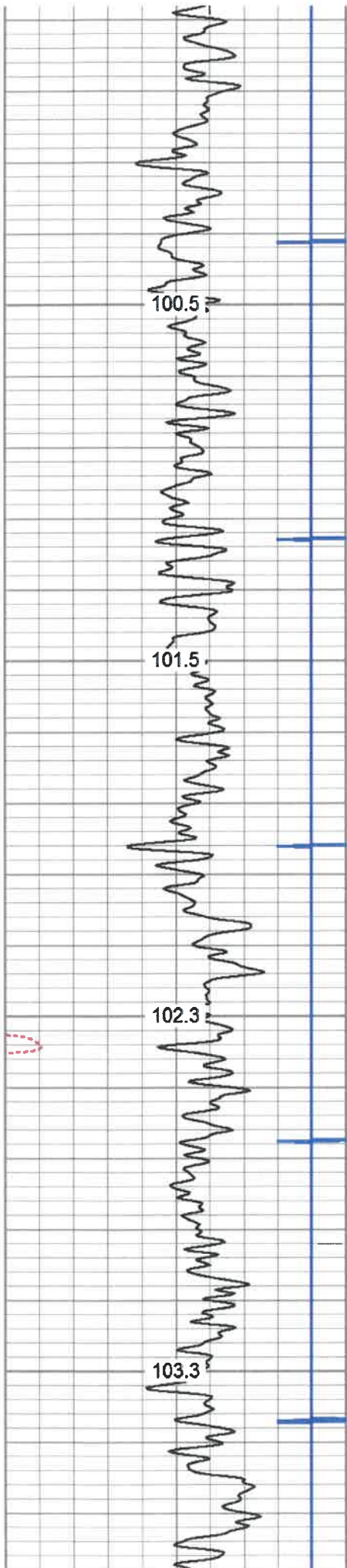
4200

4250

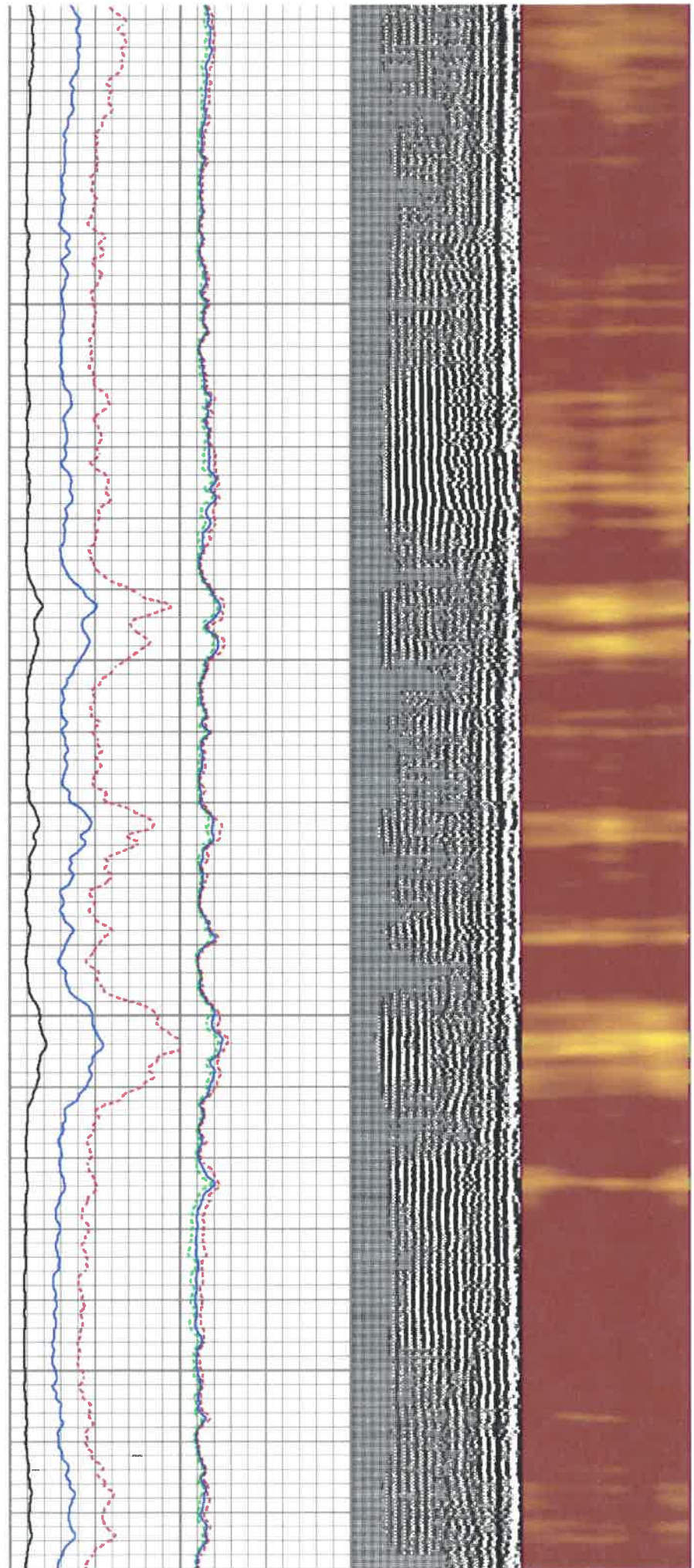
4300



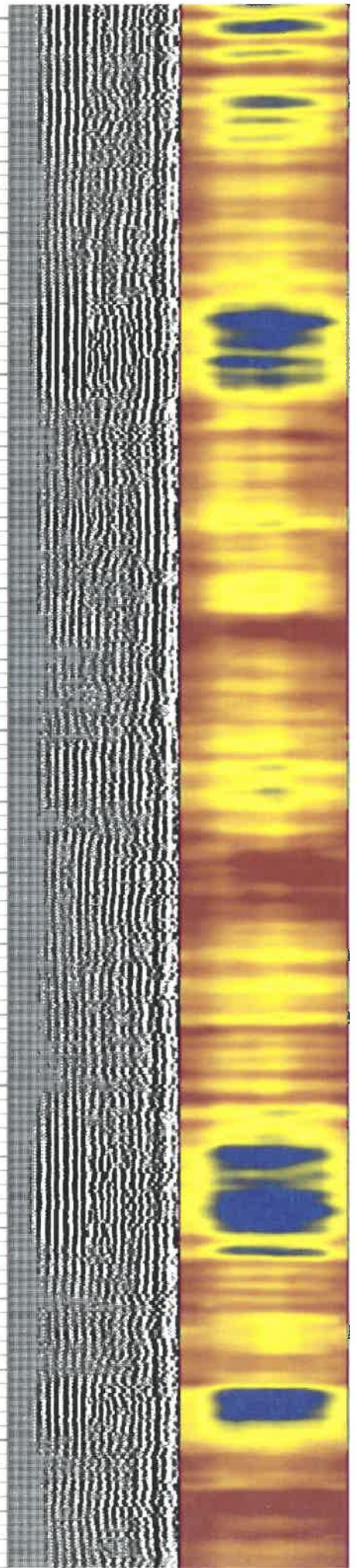
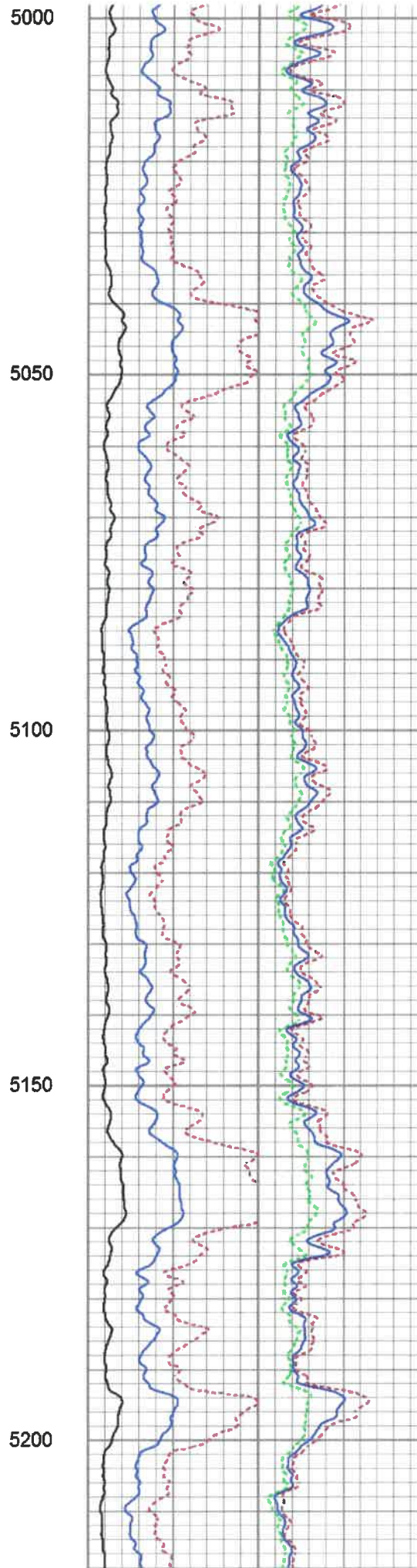
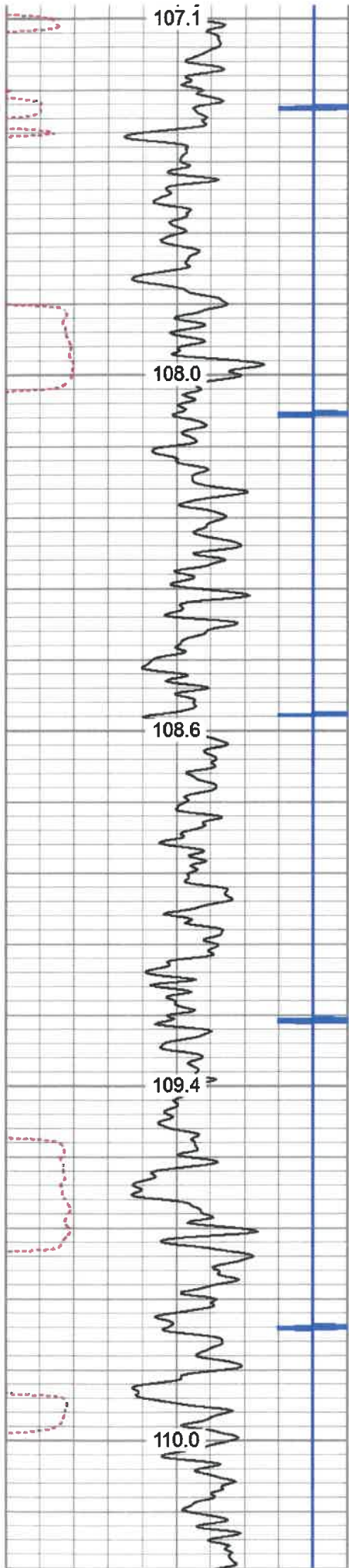




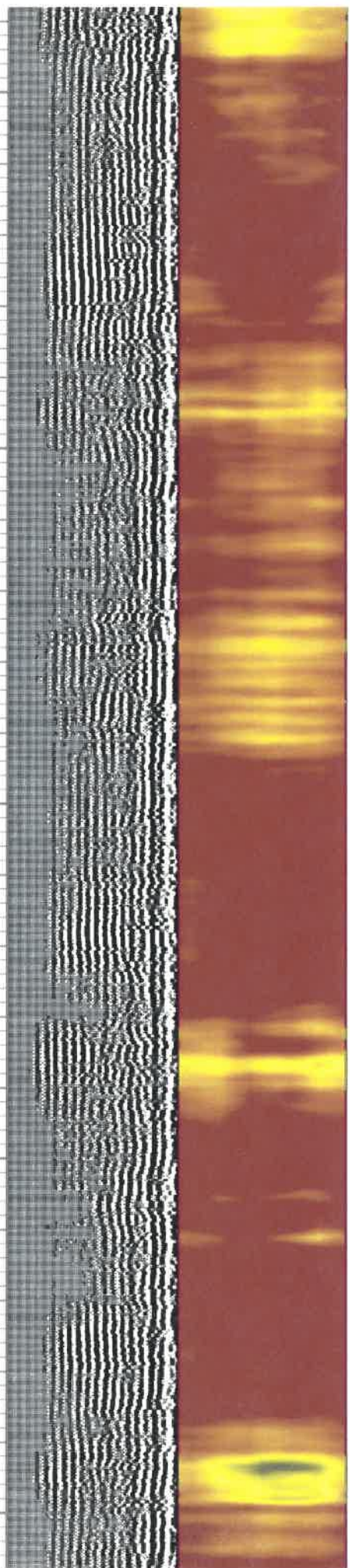
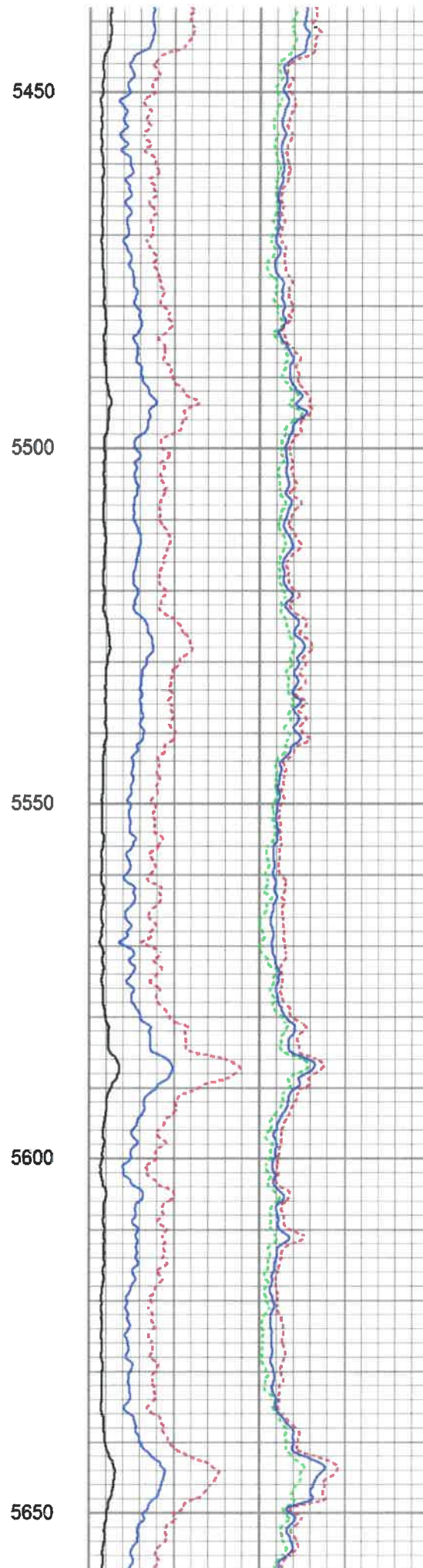
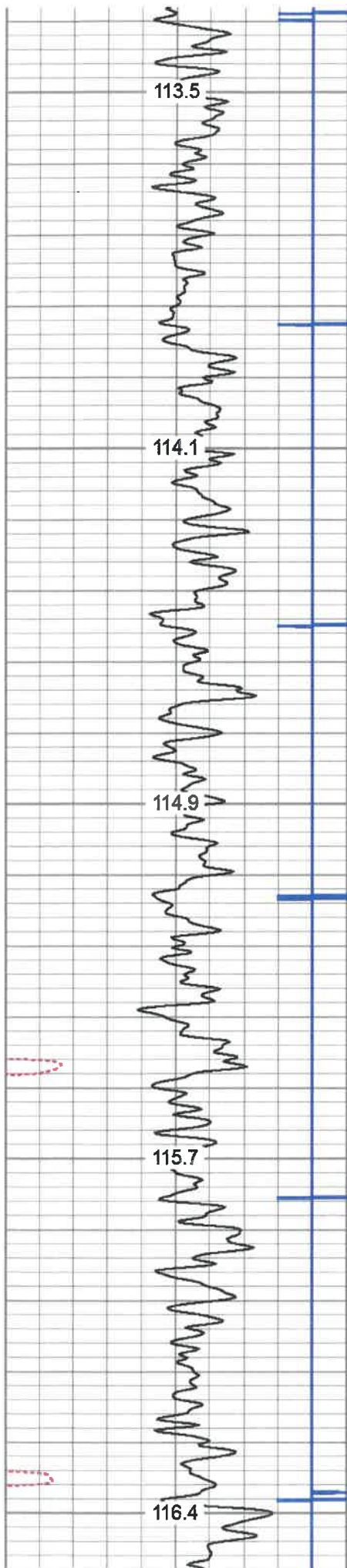
4600  
4650  
4700  
4750



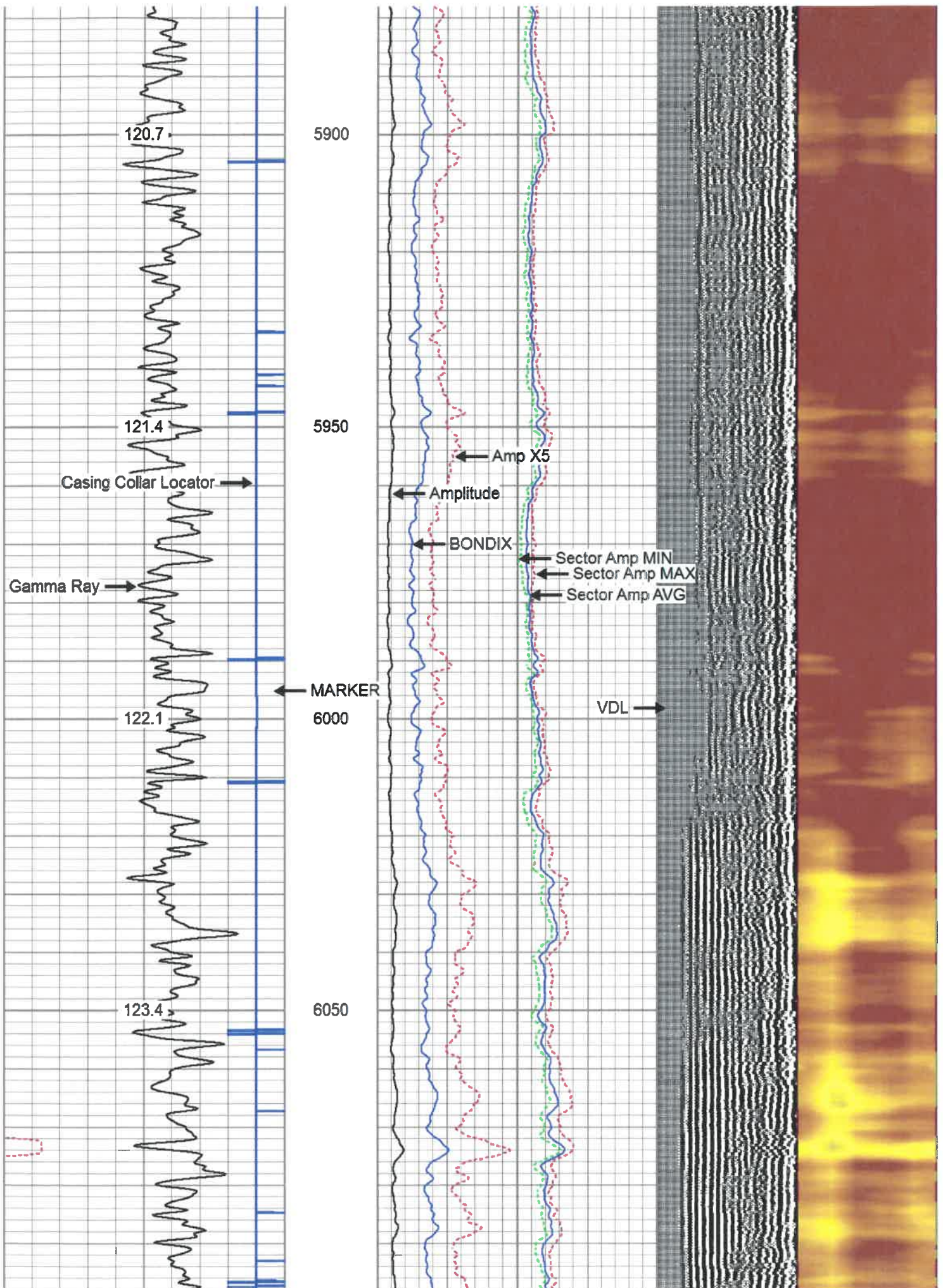




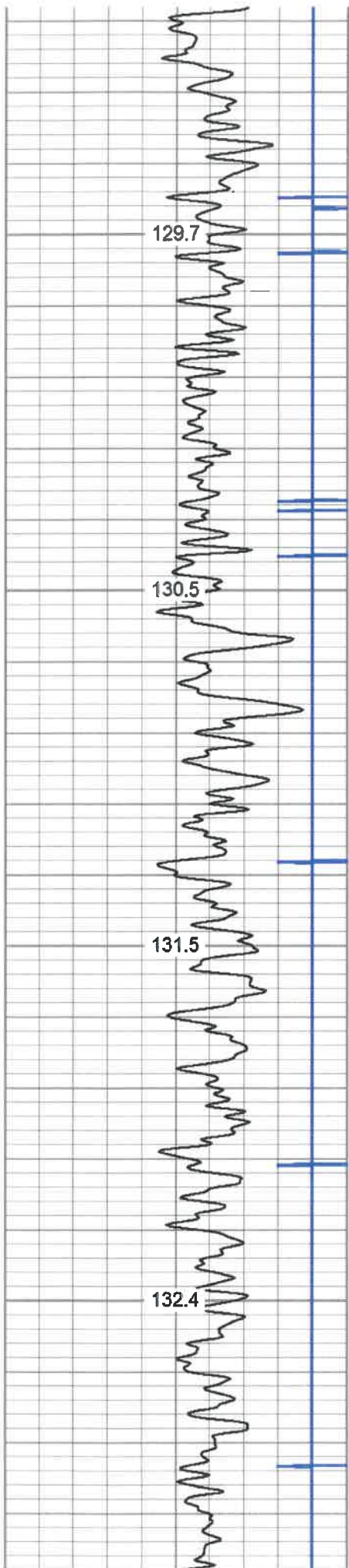










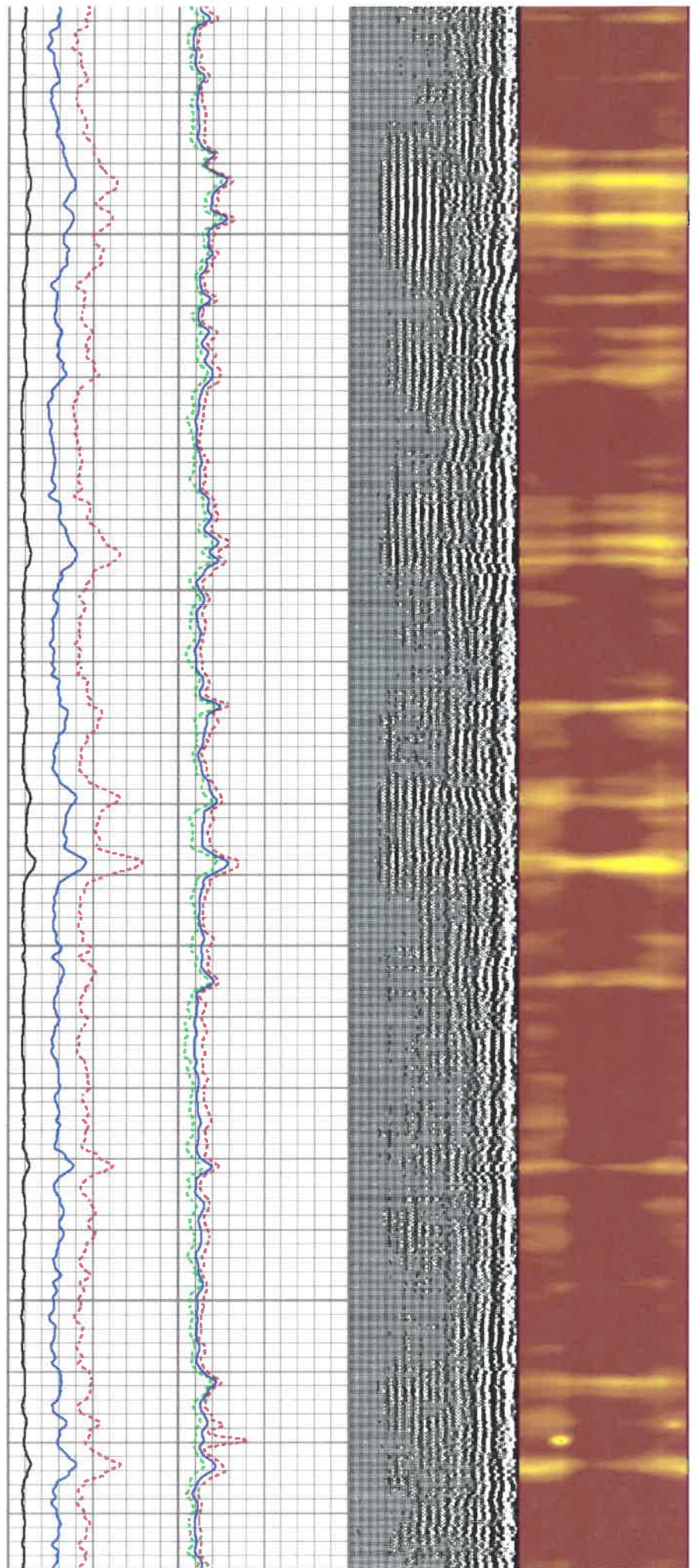


6350

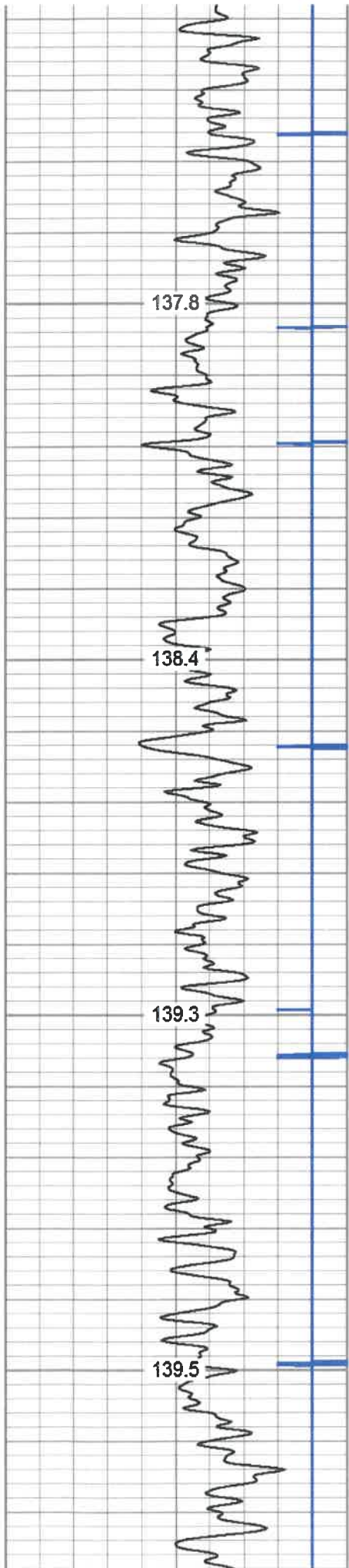
6400

6450

6500





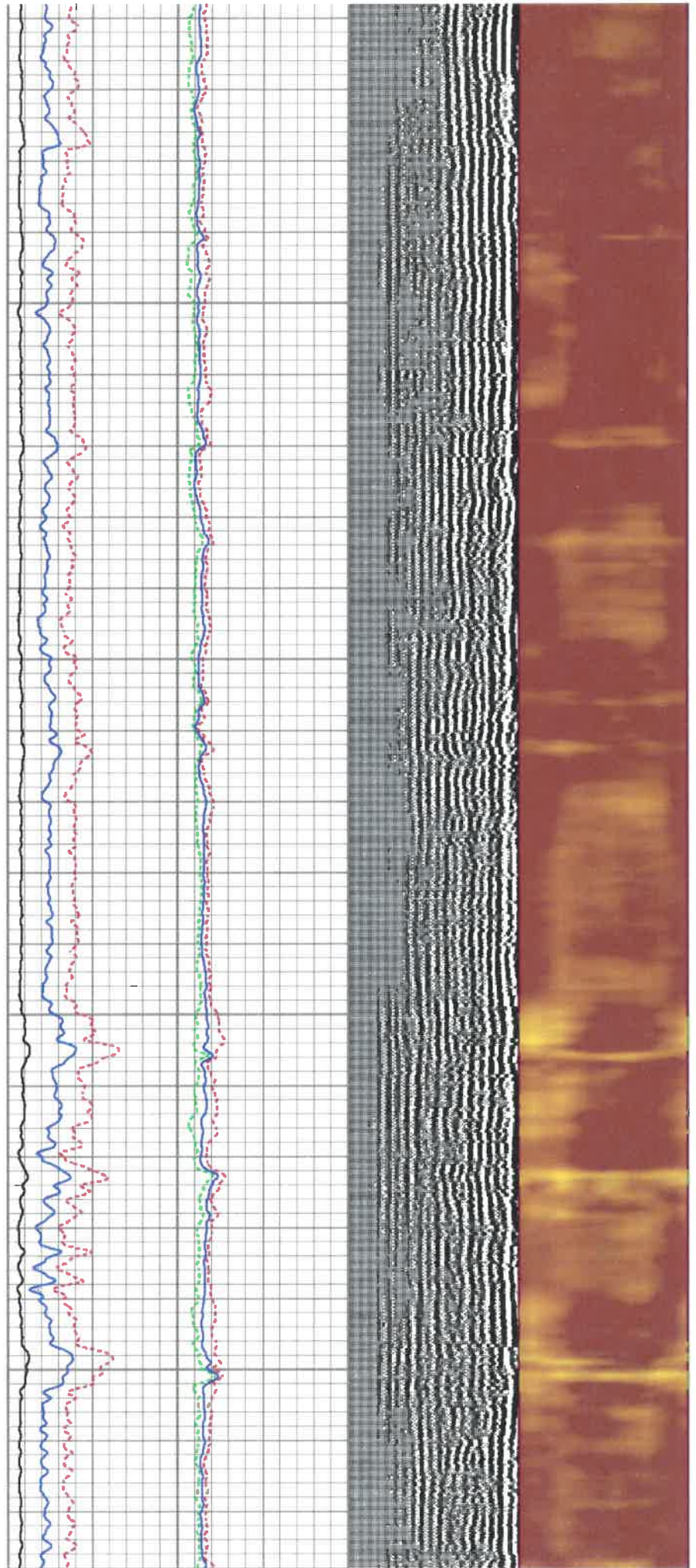


6800

6850

6900

6950





Charted by Depth in Feet scaled 1:240

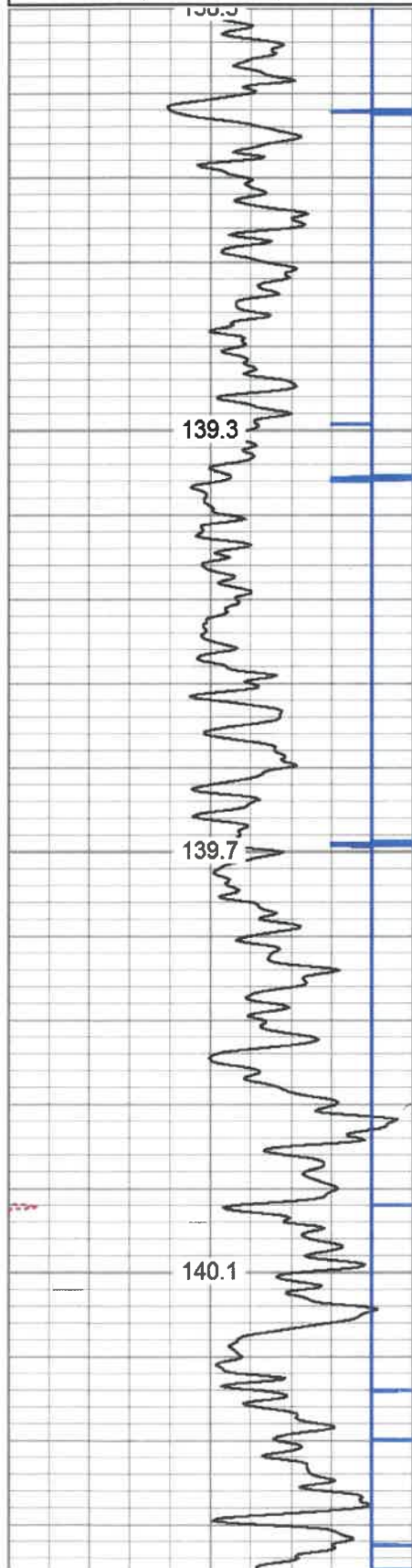
280	Travel Time (usec)	180
9	Casing Collar	-1
0	Gamma Ray (GAPI)	180
180	GR (GAPI)	360
	TEMP (degF)	

Amplitude	
0	100
(mV)	
Amp X5	
0	20
(mV)	
1	0
BONDIX	

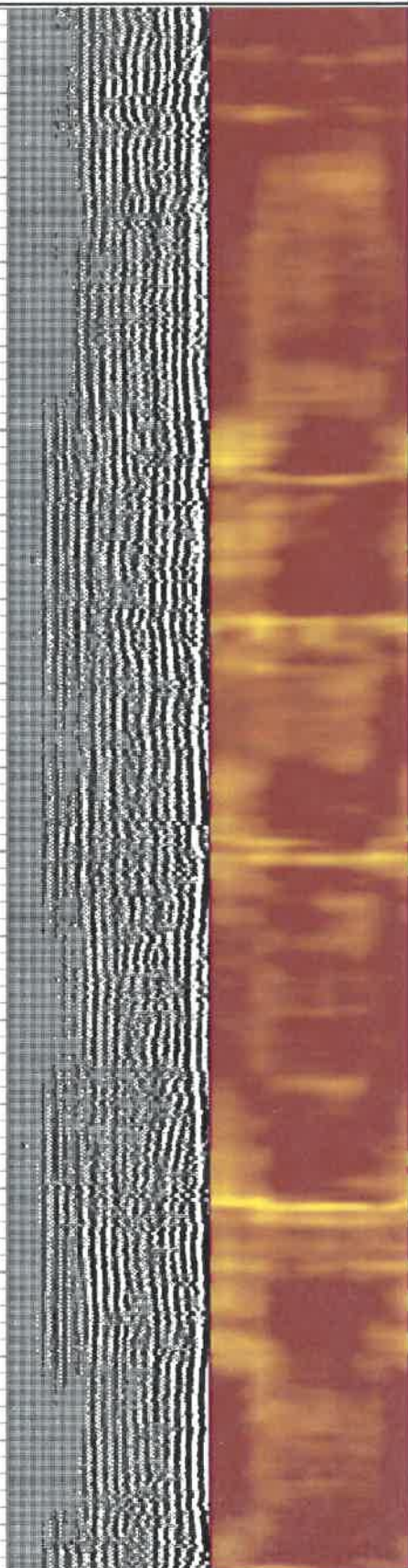
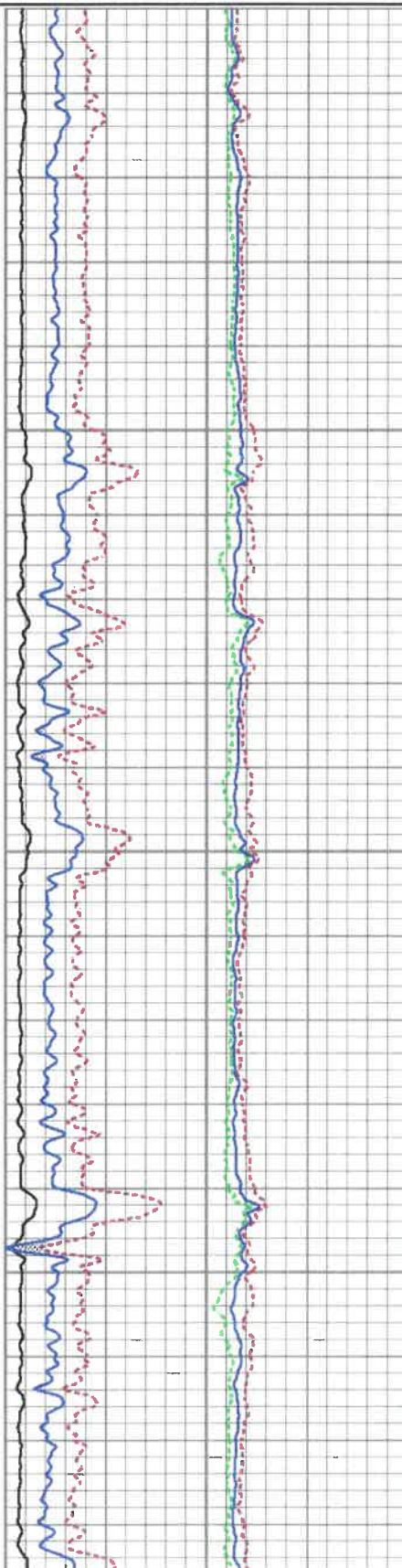
Sector Amp AVG
Sector Amp MAX
Sector Amp MIN

VDL	200	1200
(usec)		

1 Sector Map 12

6850  
6900  
6950  
7000





Gamma Ray Calibration Report

Serial Number: 0111  
 Tool Model: Tek-Co 2 3/4  
 Performed: Fri Aug 02 20:12:43 2019

Calibrator Value: 1.0 GAPI

Background Reading: 0.0 cps  
 Calibrator Reading: 1.0 cps

Sensitivity: 0.5000 GAPI/cps

Segmented Cement Bond Log Calibration Report

Serial Number: T12\_01  
 Tool Model: Tek12

Calibration Casing Diameter: 5.500 in  
 Calibration Depth: 28.925 ft


Master Calibration, performed (Derived):

	Raw (v)		Calibrated (mv)		Results	
	Zero	Cal	Zero	Cal	Gain	Offset
3'	-0.006	0.593	3.500	71.921	114.205	4.211
CAL	0.000	0.440				
5'	-0.063	0.791	1.000	71.921	83.010	6.269
SUM						
S1	0.000	1.465	0.000	100.000	68.272	-0.002
S2	0.000	1.526	0.000	100.000	65.542	-0.002
S3	0.000	1.549	0.000	100.000	64.544	-0.002
S4	0.000	1.254	0.000	100.000	79.727	-0.002
S5	0.000	1.253	0.000	100.000	79.821	-0.002
S6	0.000	1.157	0.000	100.000	86.413	-0.002
S7	-0.012	1.058	0.000	100.000	93.460	1.091
S8	-0.009	0.969	0.000	100.000	102.281	0.921
S9	0.000	1.061	0.000	100.000	94.280	-0.002
S10	0.000	1.091	0.000	100.000	91.697	-0.002
S11	0.000	1.242	0.000	100.000	80.507	-0.002
S12	0.000	1.384	0.000	100.000	72.242	-0.002

Temperature Calibration Report

Serial Number: T12\_01  
 Tool Model: Tek12  
 Performed: Fri Oct 22 17:21:06 2010

	Reference	Reading
Low Reference:	0.00 degF	0.00 usec
High Reference:	1.00 degF	1.00 usec
Gain:	0.33	
Offset:	0.00	
Delta Spacing	2	

Sensor	Offset (ft)	Schematic	Description	Length (ft)	O.D. (in)	Weight (lb)
			Titan-1.4375 1 7/16 Titan Type II Cable Head	1.03	1.44	5.00
			CCI-312tekon (101)	1.82	3.12	25.00





Energy Services

County  
State

DODDRIDGE  
WV

Country USA