



RADIAL BOND LOG
GAMMA RAY
VDL,CCL

Company	ANTERO RESOURCES CORPORATION	Company	ANTERO RESOURCES CORPORATION
Well	OXFORD 97 EHS	Well	OXFORD 97 EHS
Field	MARCELLUS	Field	MARCELLUS
County	DODDRIDGE	County	DODDRIDGE
State	WV	State	WV

Location:	API # : 47017065830000	Other Services
SEC	TWP	RGE
AFE A06742		
Permanent Datum	Elevation	Elevation
Log Measured From		K.B.
Drilling Measured From		D.F.
		G.L.

Date	8-28-19			
Run Number	1			
Depth Driller	12724'			
Depth Logger	7451'			
Bottom Logged Interval	7451'			
Top Log Interval	SURFACE			
Open Hole Size	N/A			
Type Fluid	WATER			
Density / Viscosity	N/A			
Max. Recorded Temp.	140.5 DEG			
Estimated Cement Top	SURFACE			
Time Well Ready	N/A			
Time Logger on Bottom	17:00			
Equipment Number	624874			
Location	BRIDGEPORT			
Recorded By	P DAVIDSON			
Witnessed By	DAVE GANDEE			

Borehole Record		Casing Record	
Run Number	Bit	From	To
		5.5	23
		12724	0

<<< Fold Here >>>

All interpretations are opinions based on inferences from electrical or other measurements and we cannot and do not guarantee the accuracy or correctness of any interpretation, and we shall not, except in the case of gross or willful negligence on our part, be liable or responsible for any loss, costs, damages, or expenses incurred or sustained by anyone resulting from any interpretation made by any of our officers, agents or employees. These interpretations are also subject to our general terms and conditions set out in our current Price Schedule.

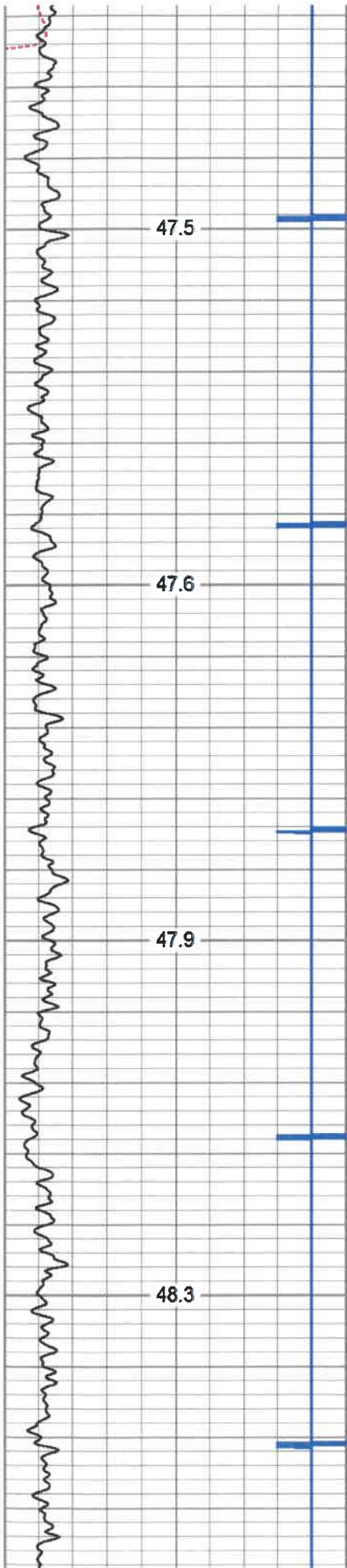
Comments

MARKER JOINT @ 6616'-6636'
 LOG TD 7451'
 CEMENT TOP @ SURFACE
 LOGGED UNDER 1500 PSI.

THANK YOU FOR CHOOSING KLX ENERGY



MAIN PASS 1500 PSI

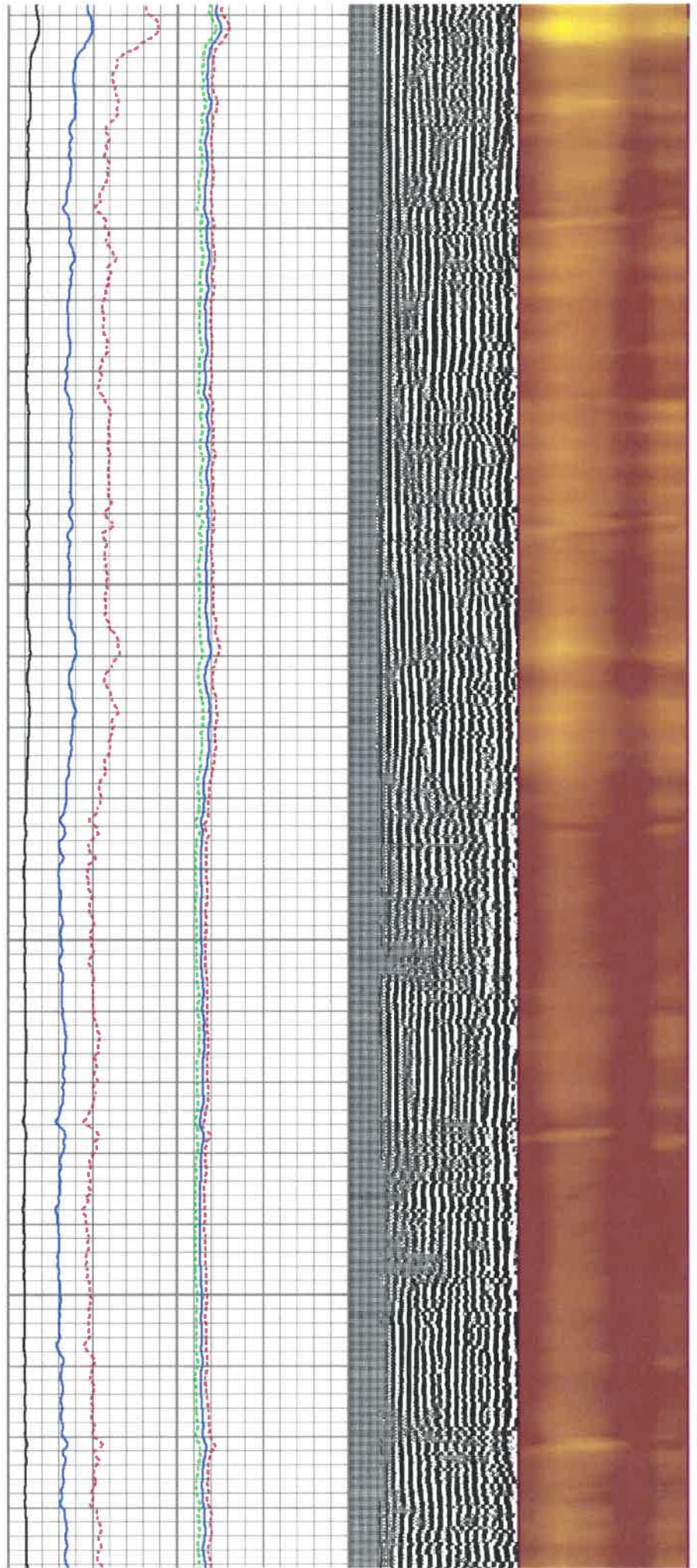


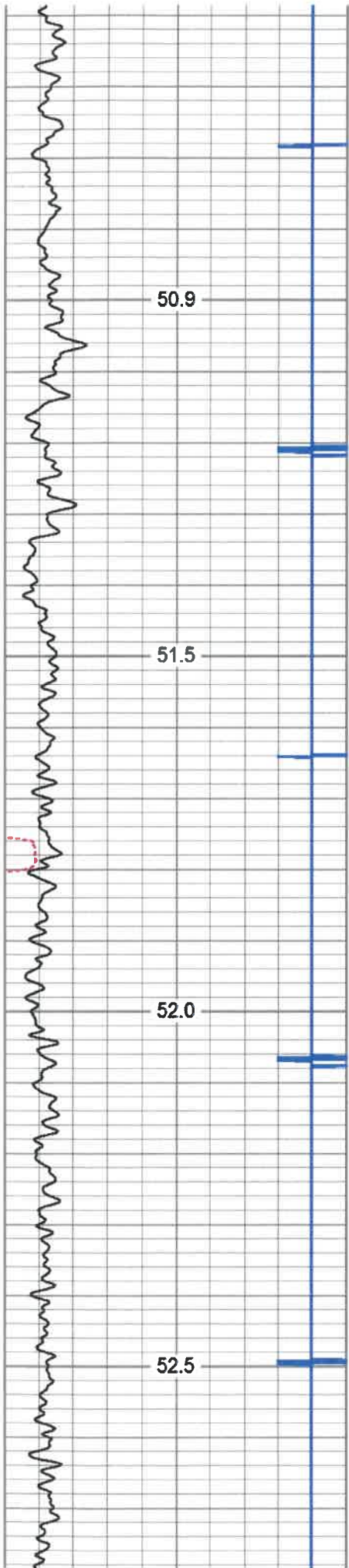
200

250

300

350



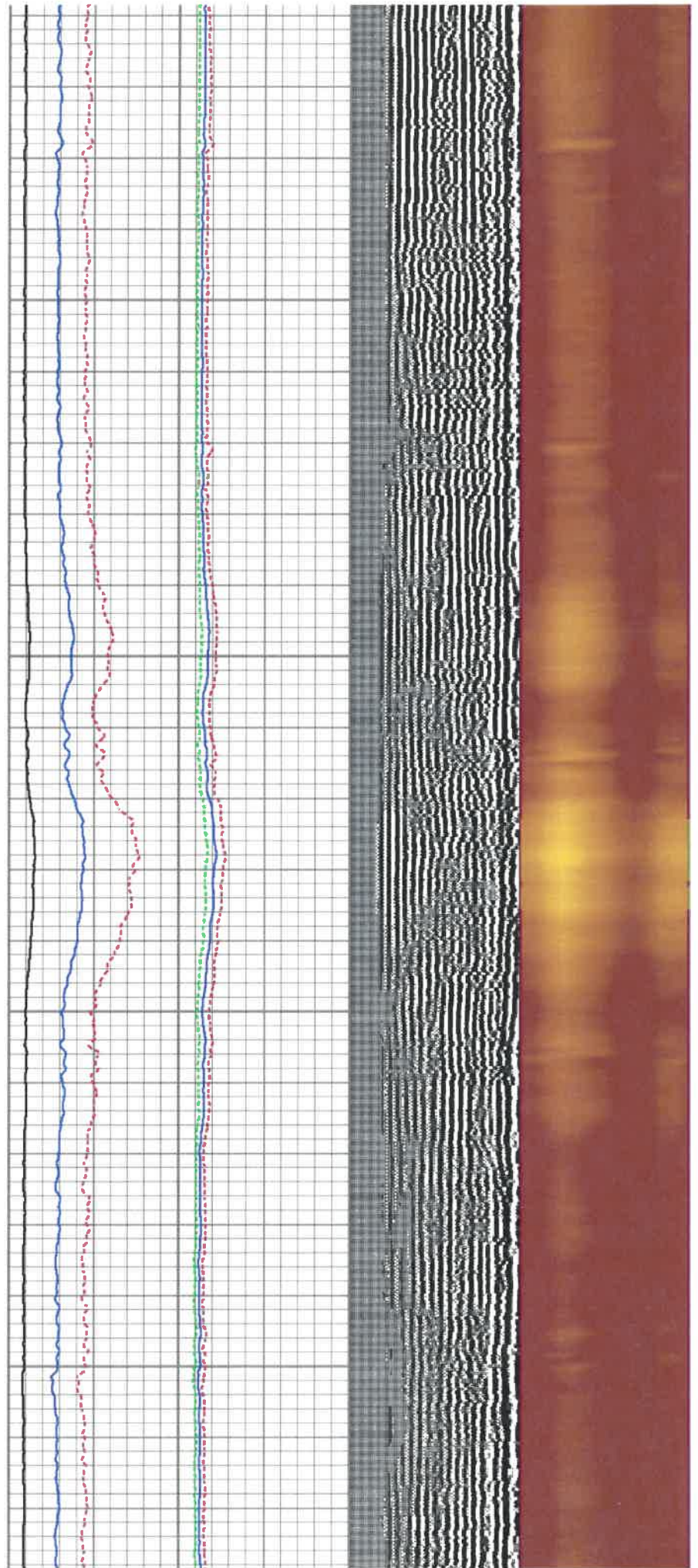


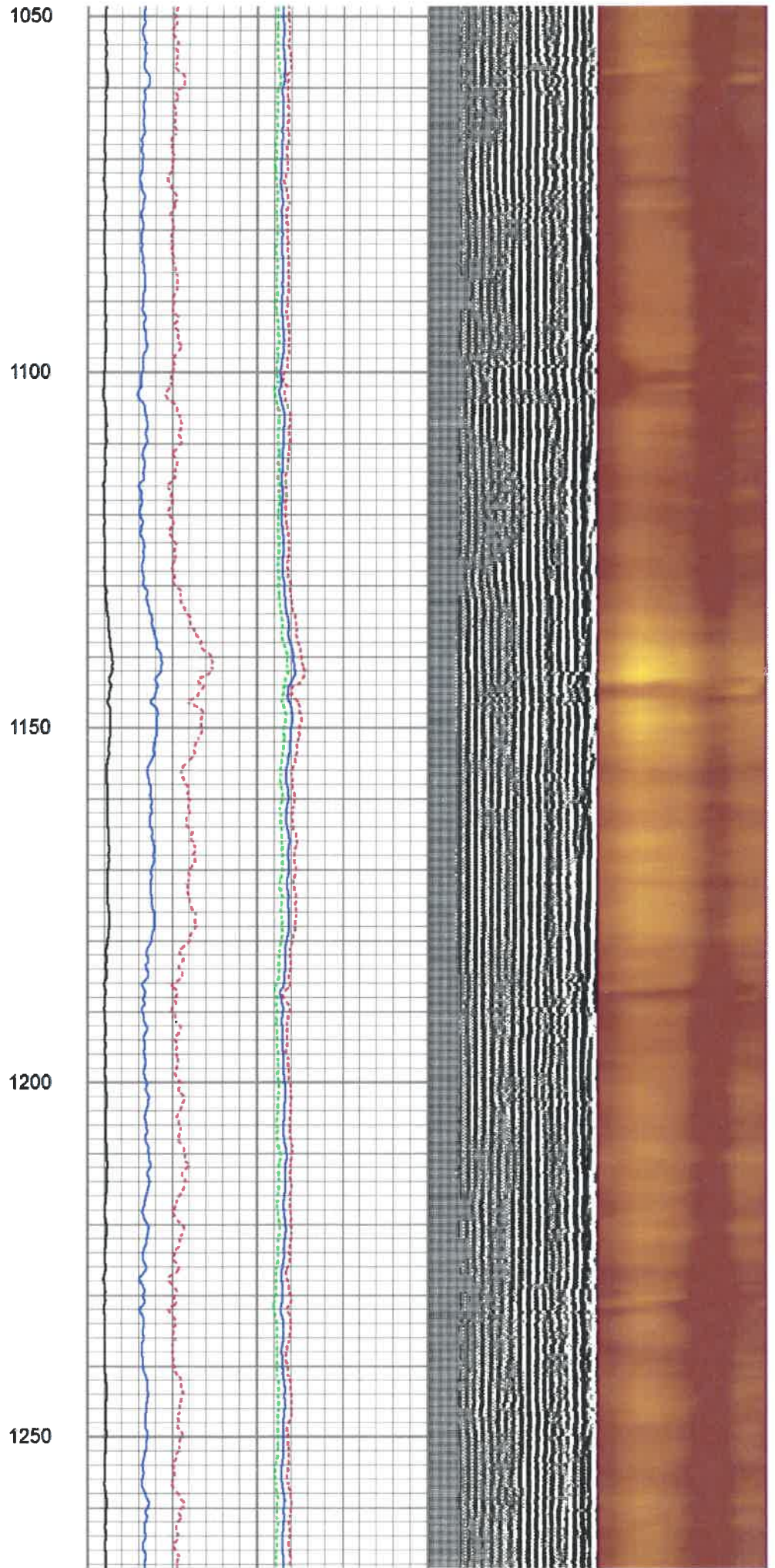
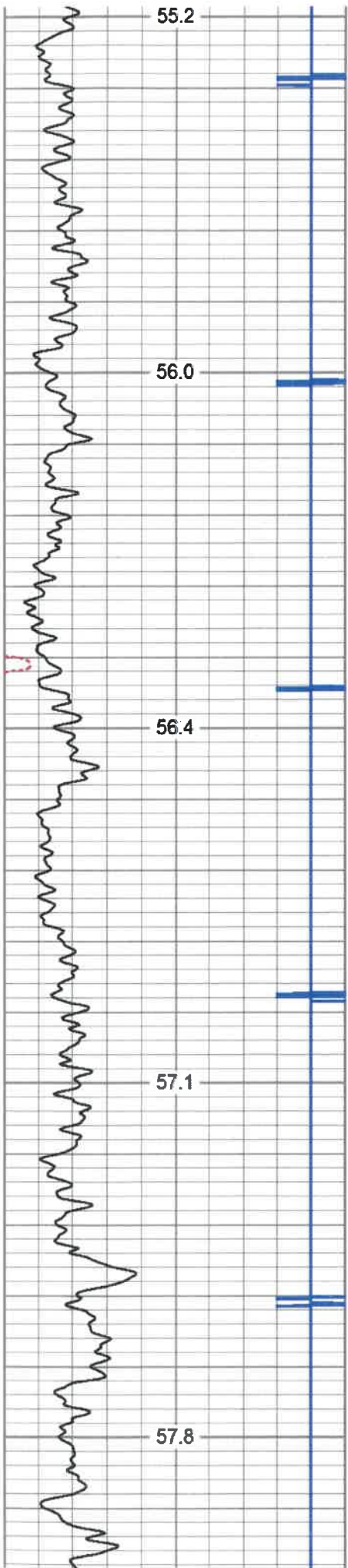
650

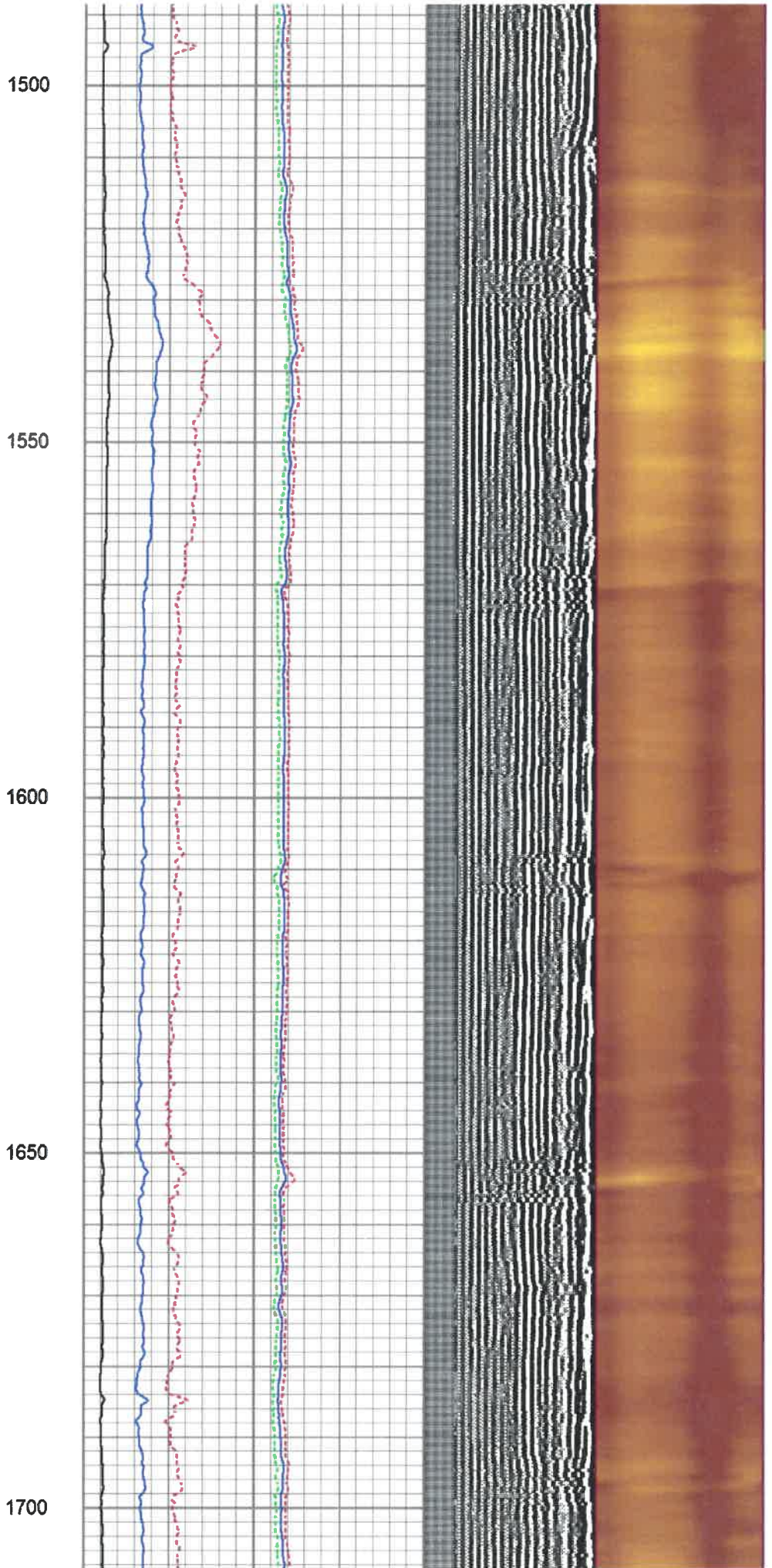
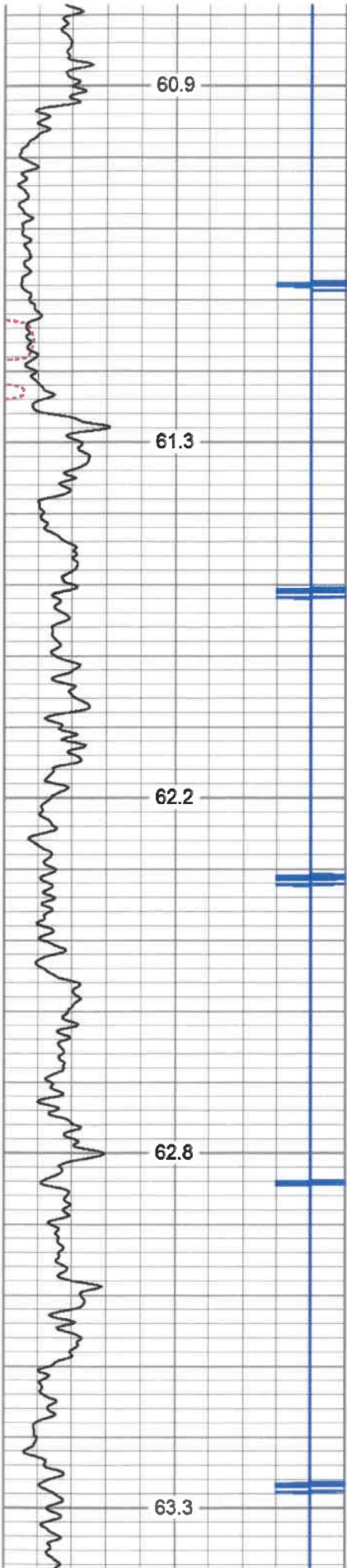
700

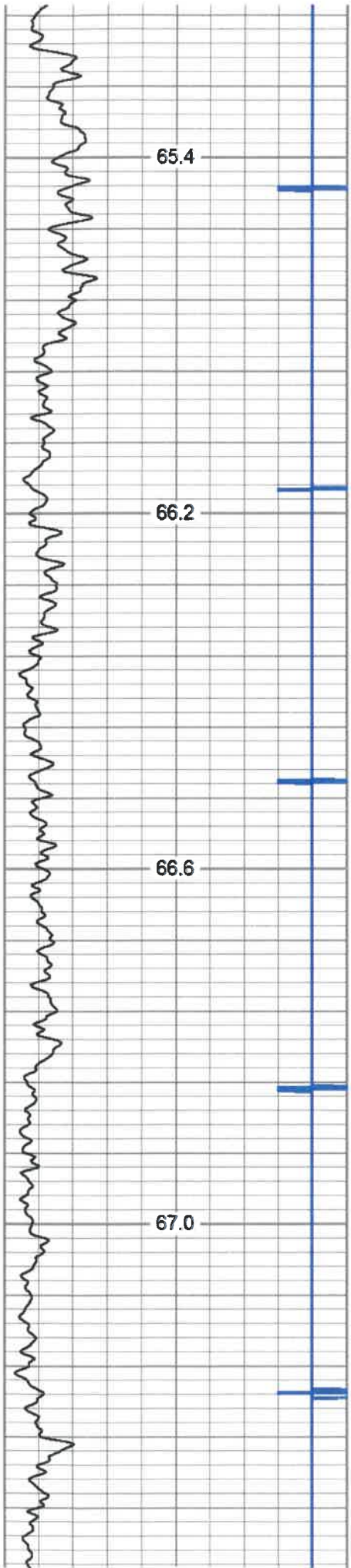
750

800







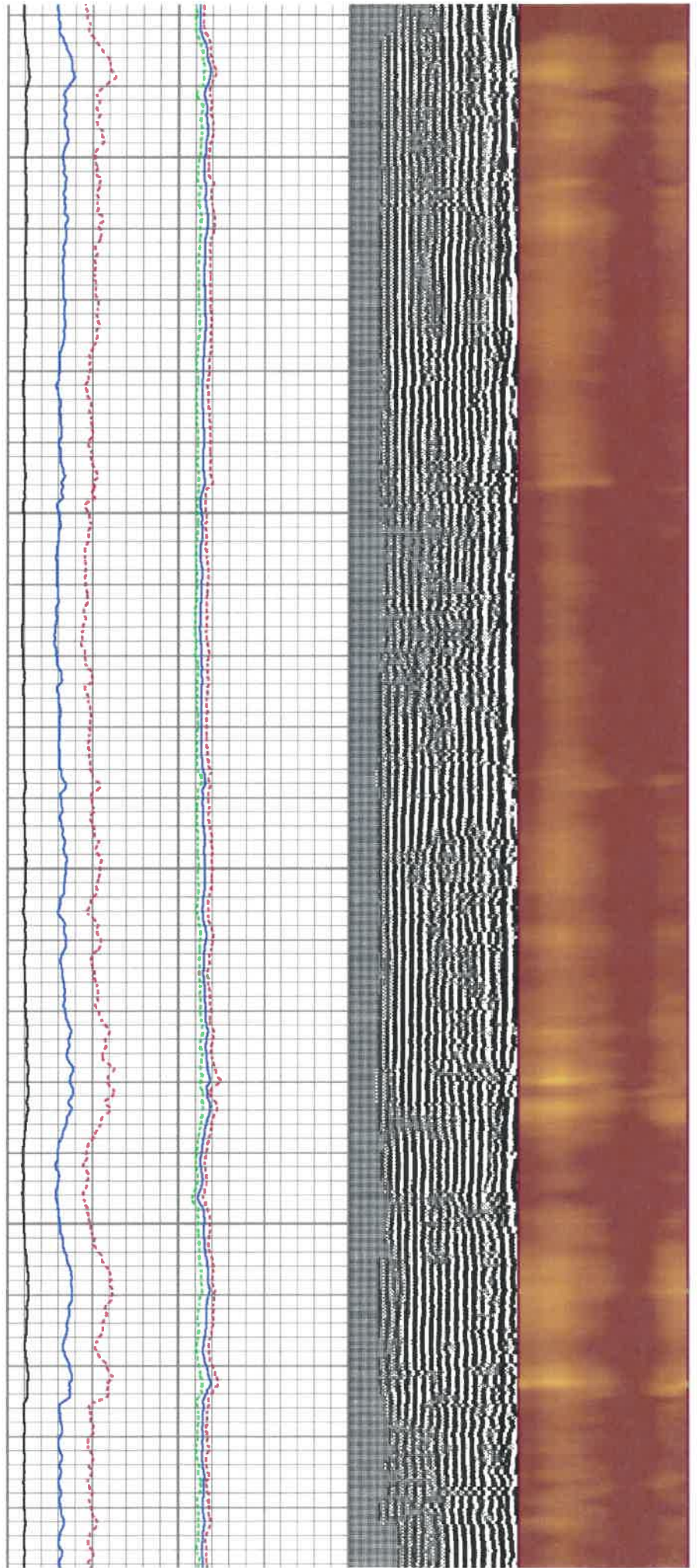


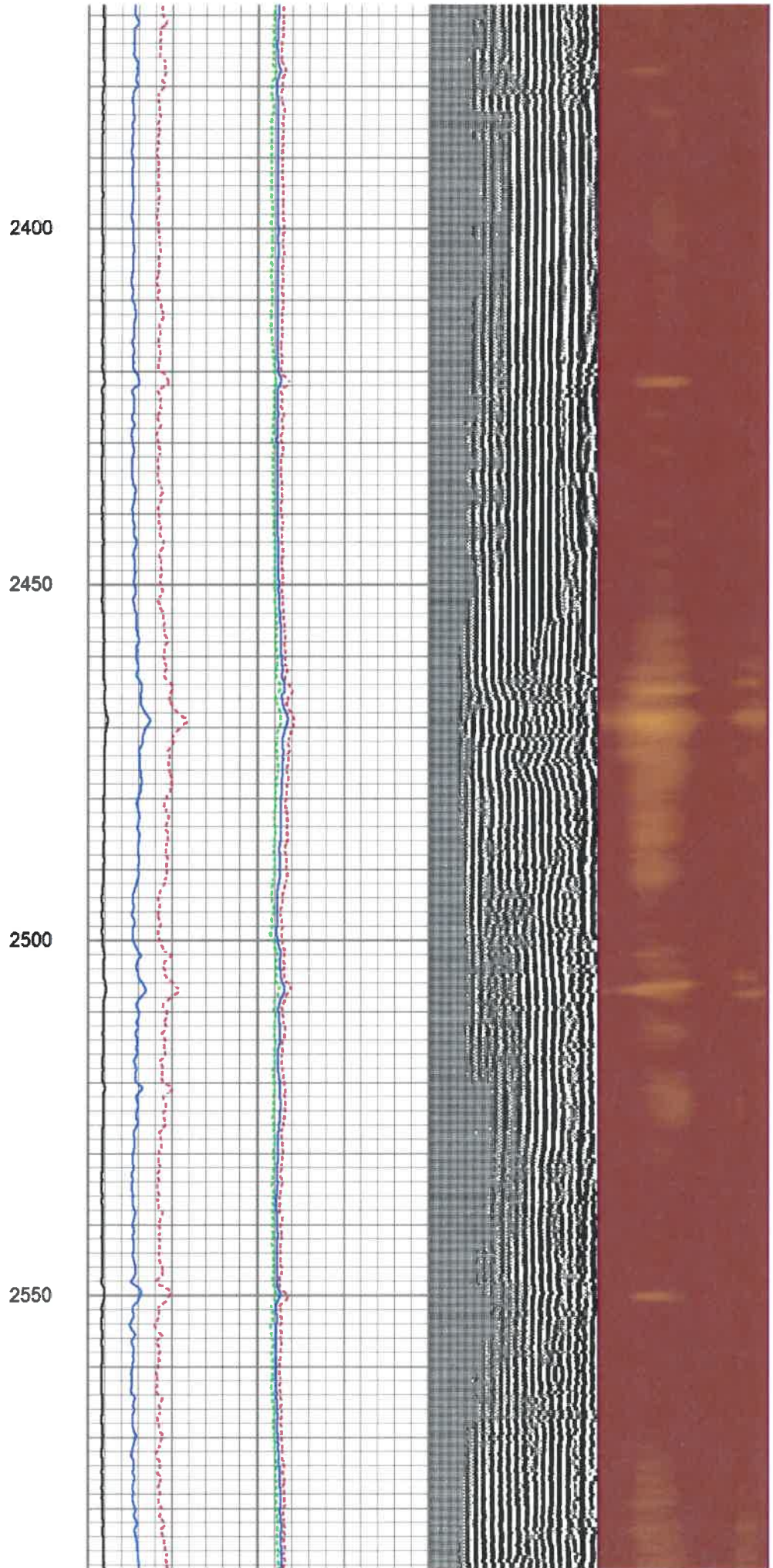
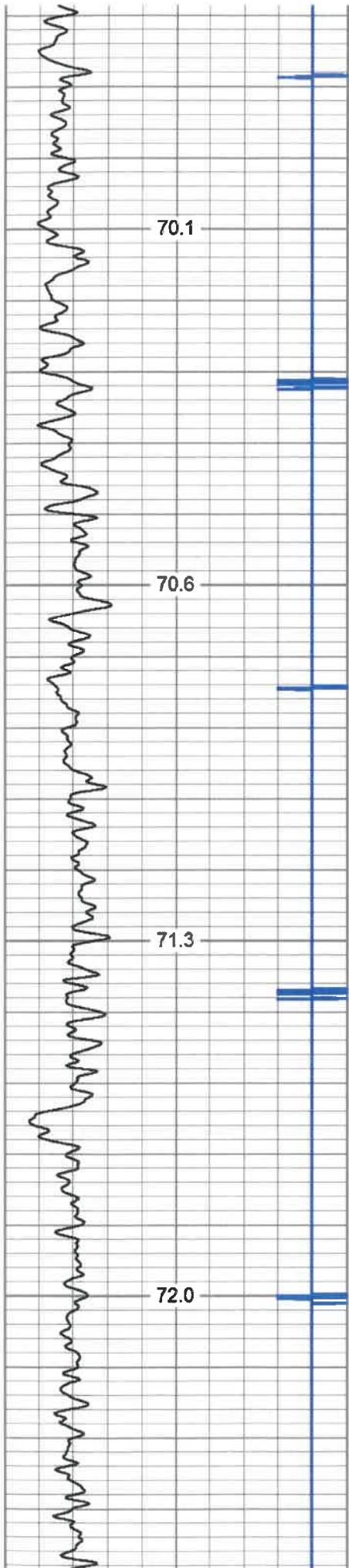
1950

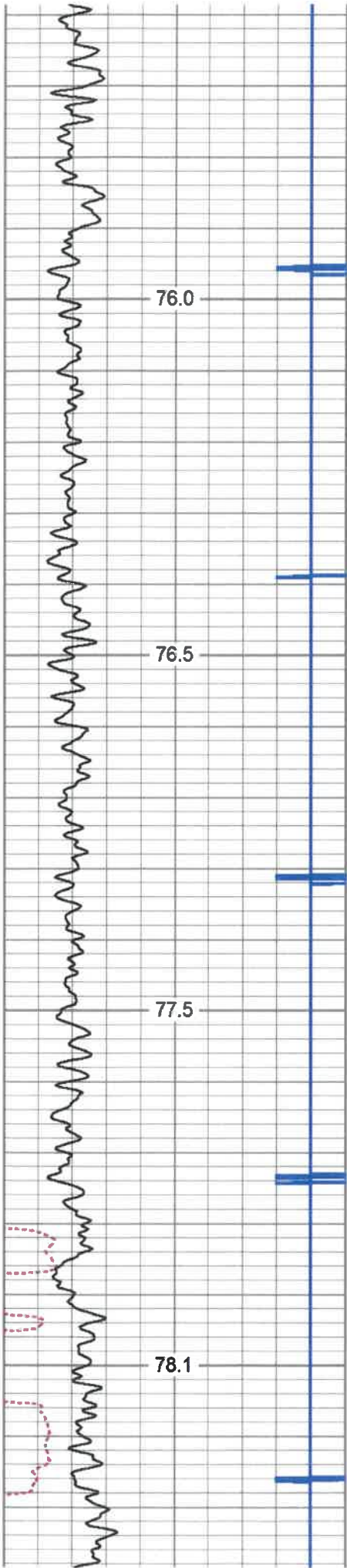
2000

2050

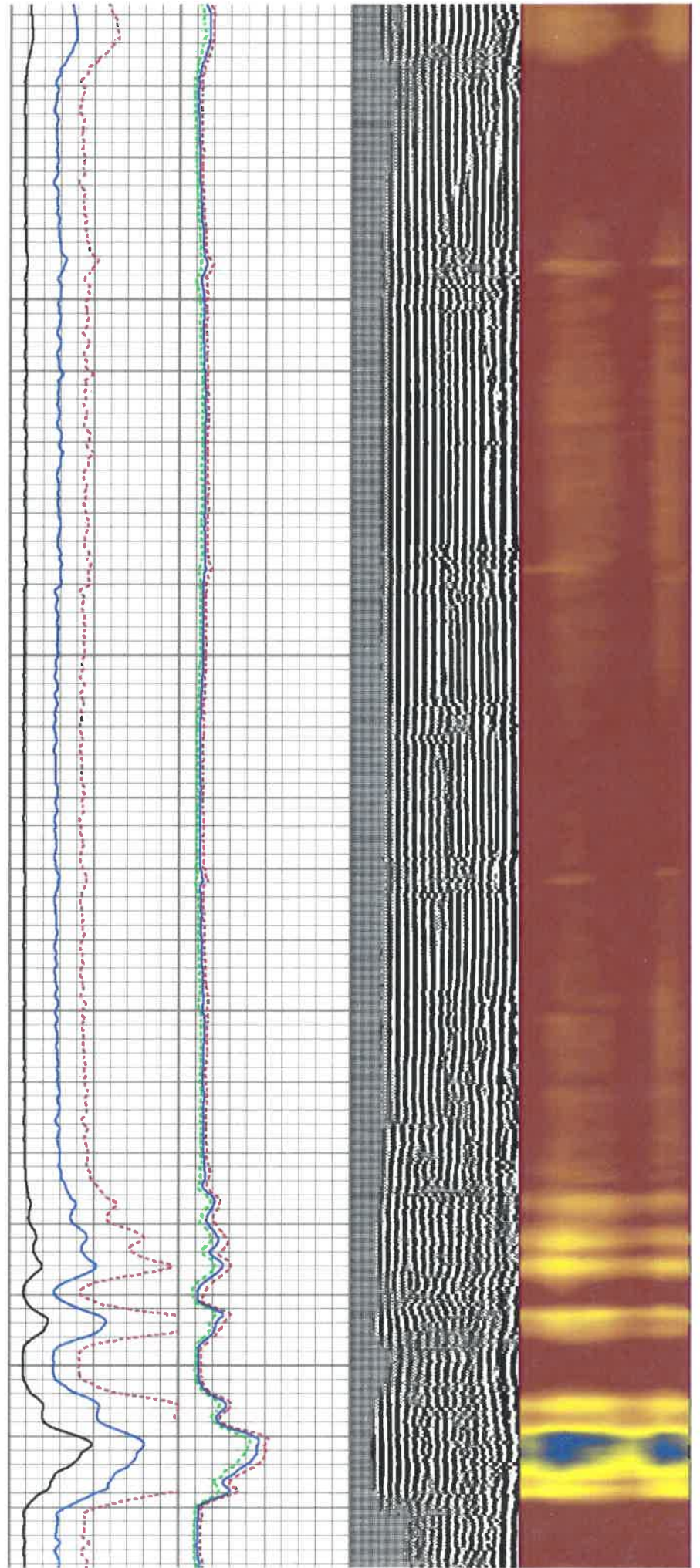
2100

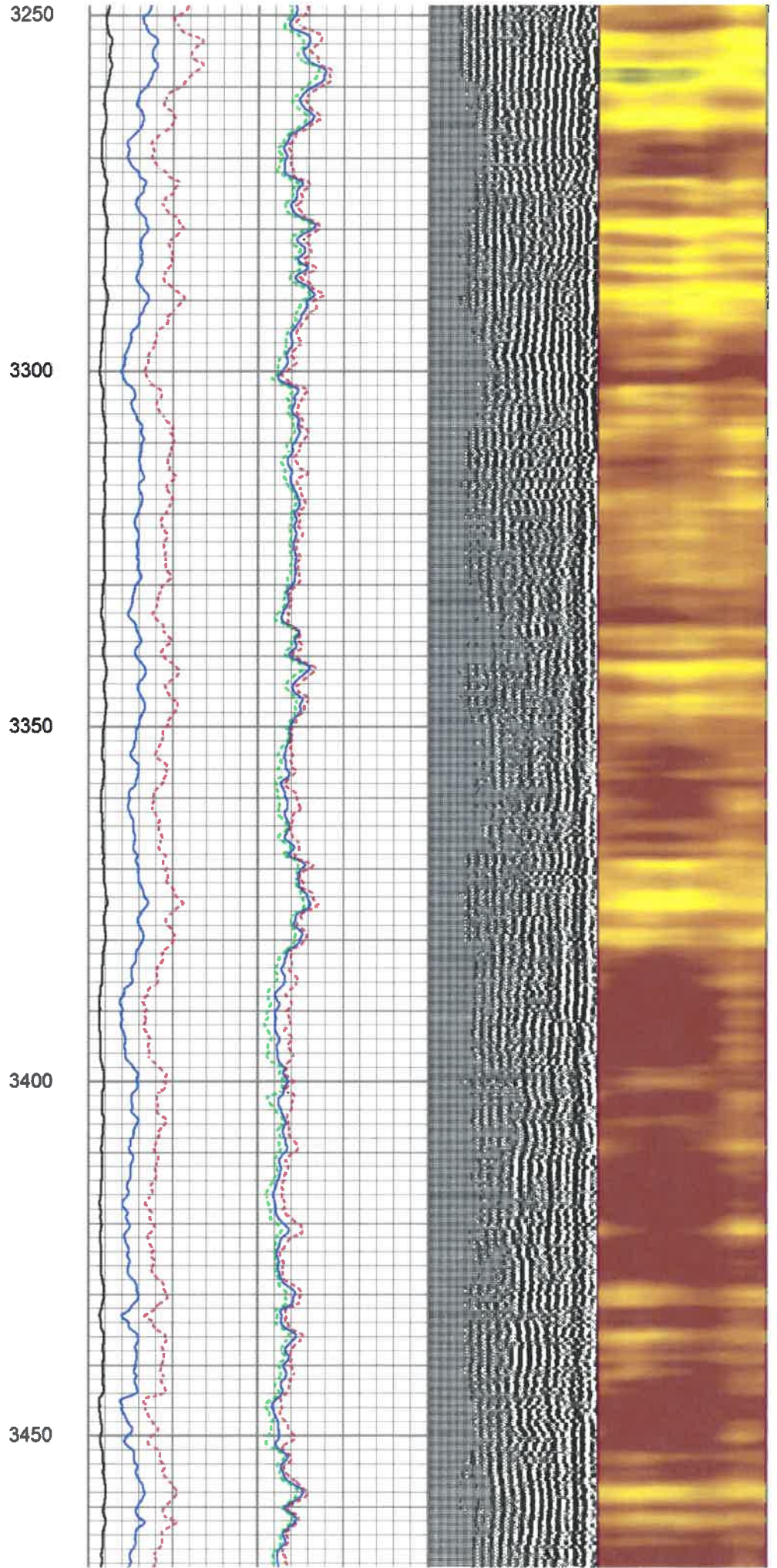
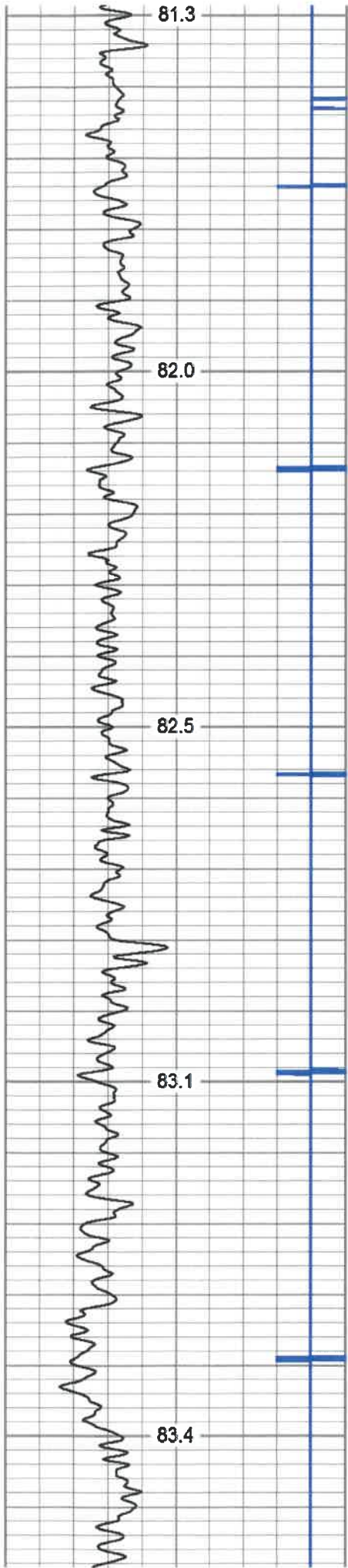


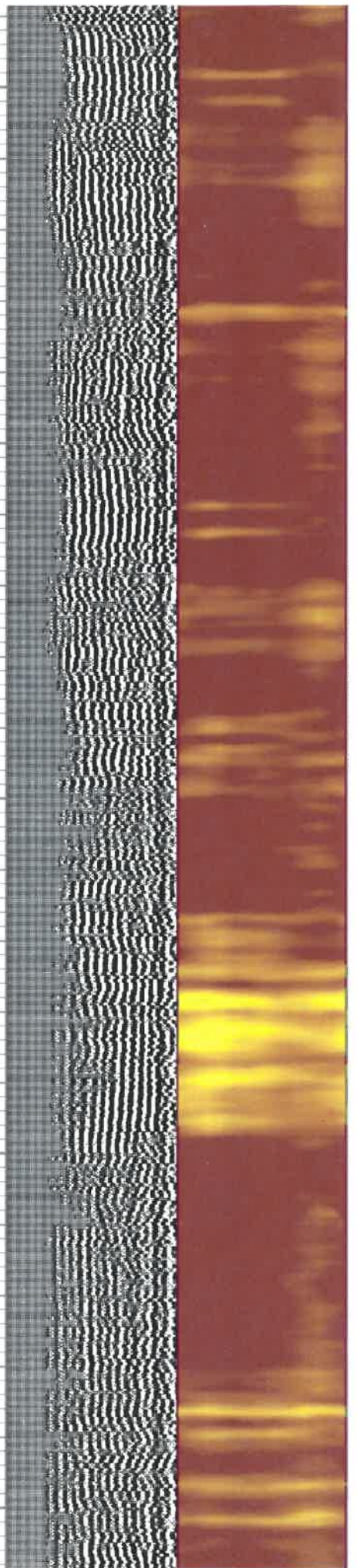
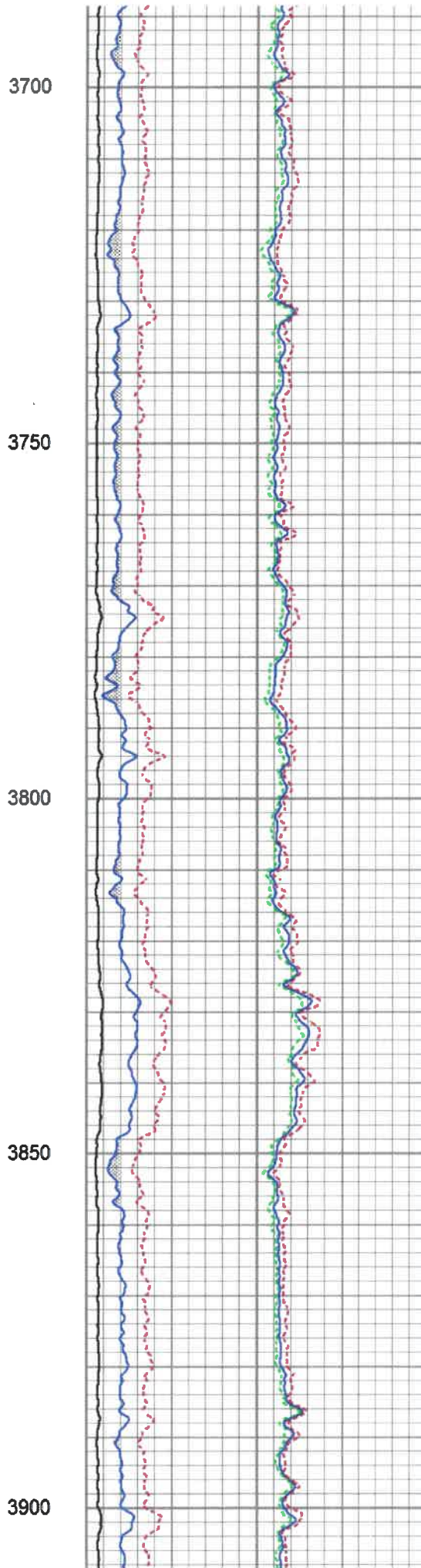
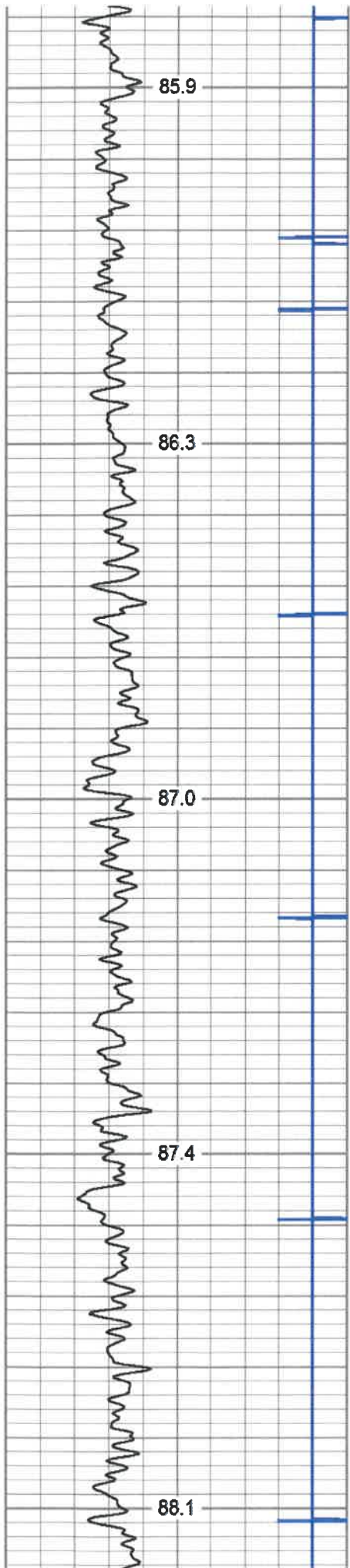


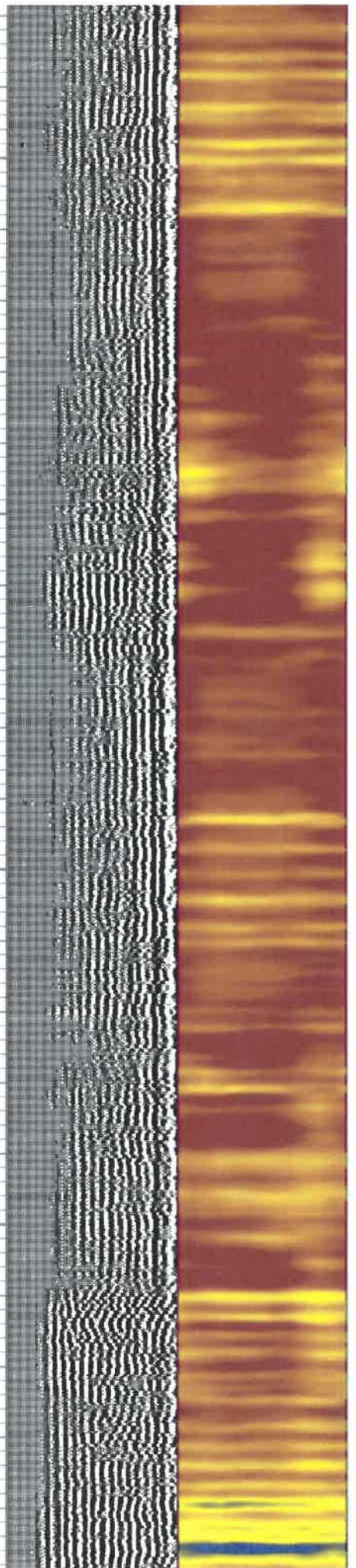
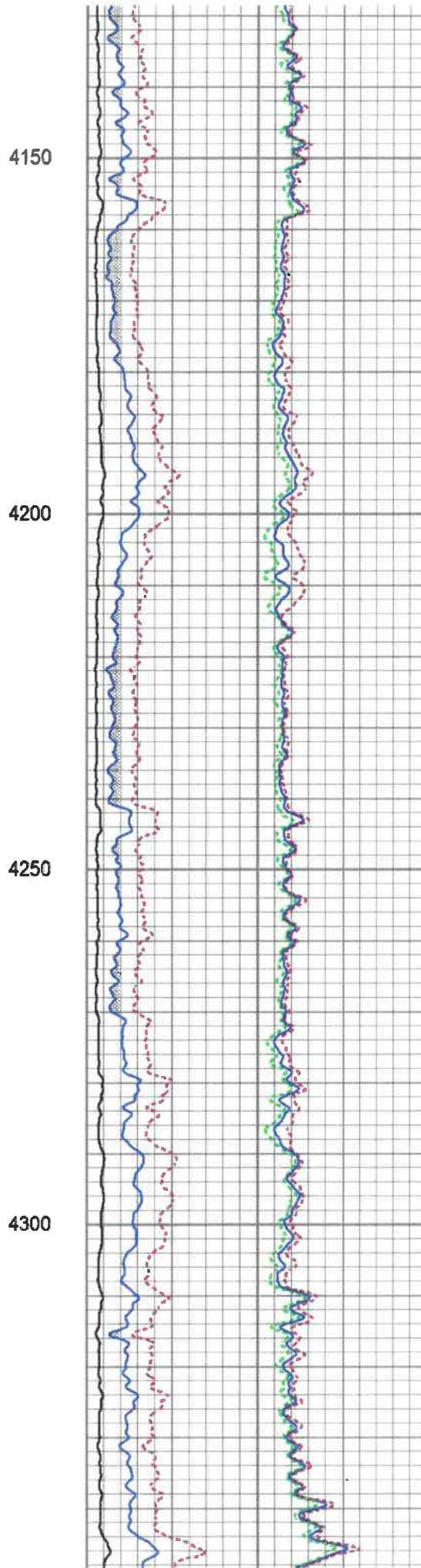
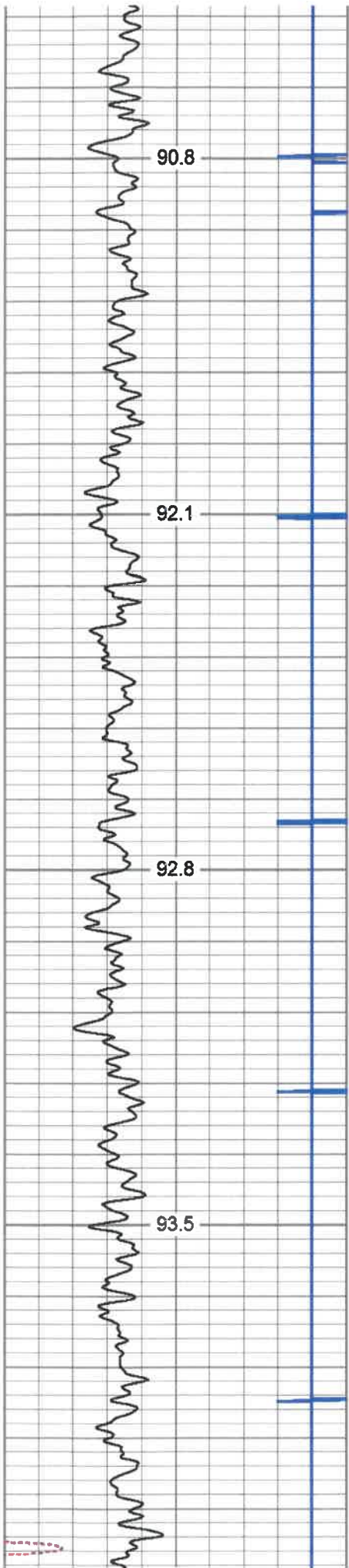


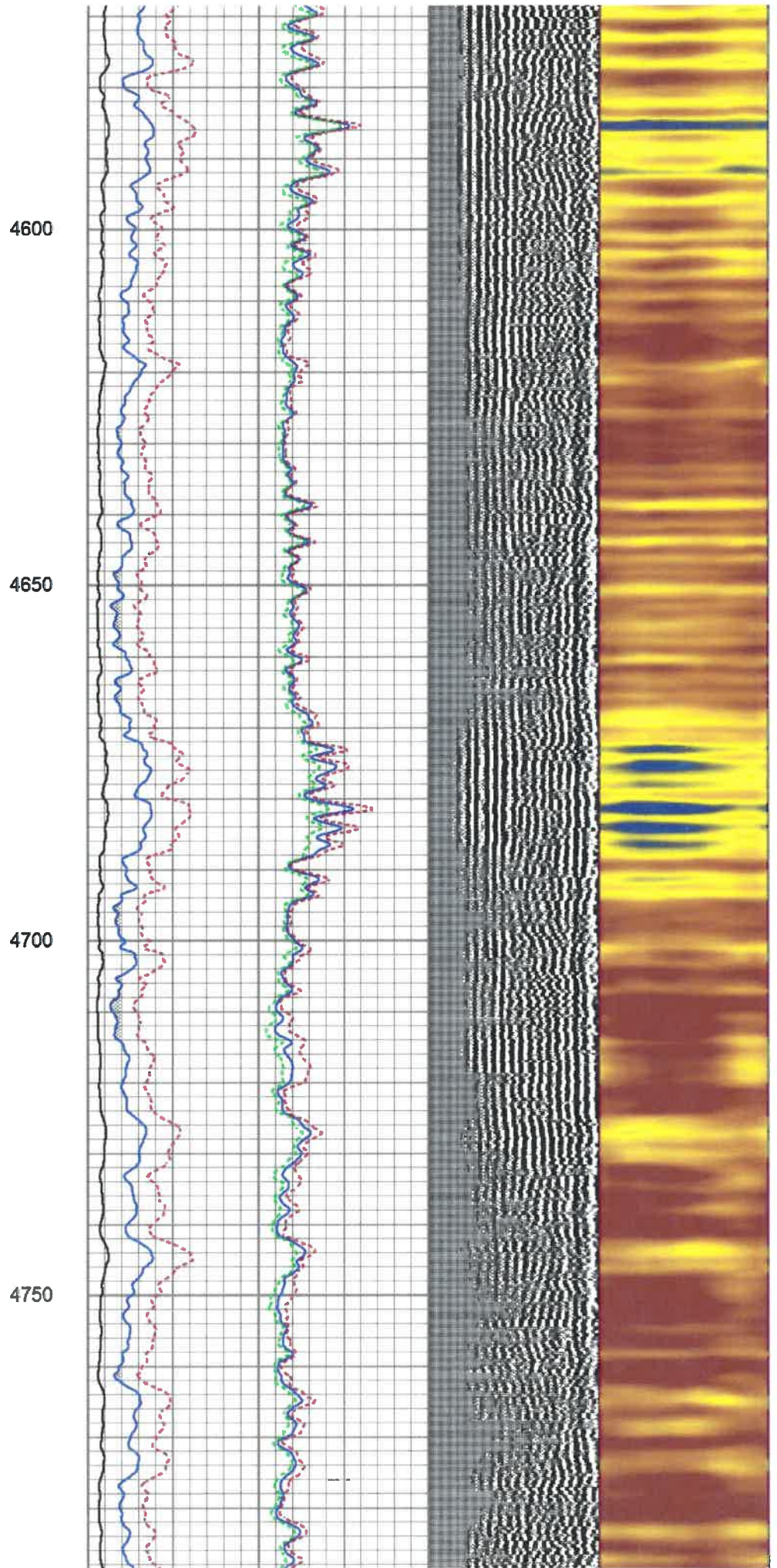
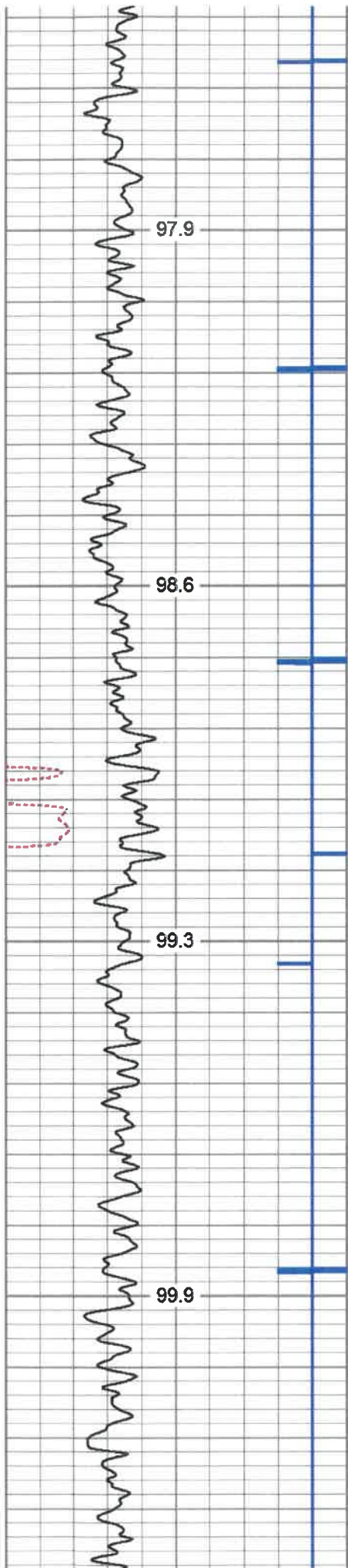
2850
2900
2950
3000

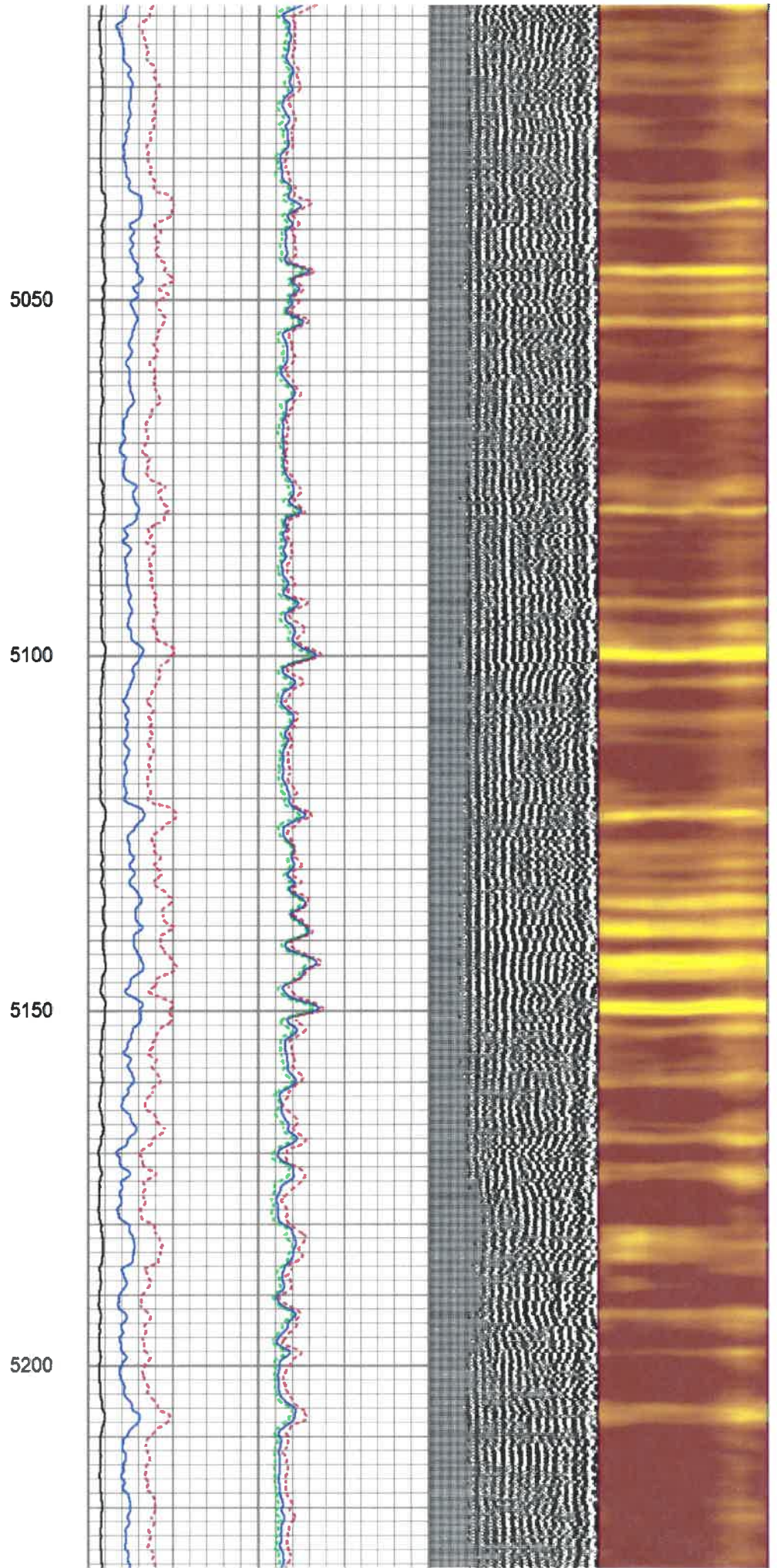
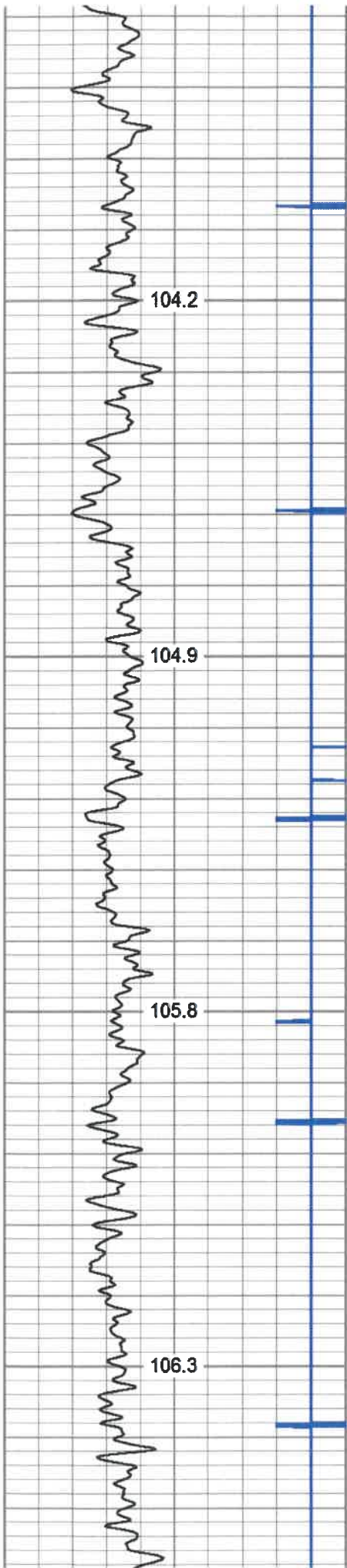


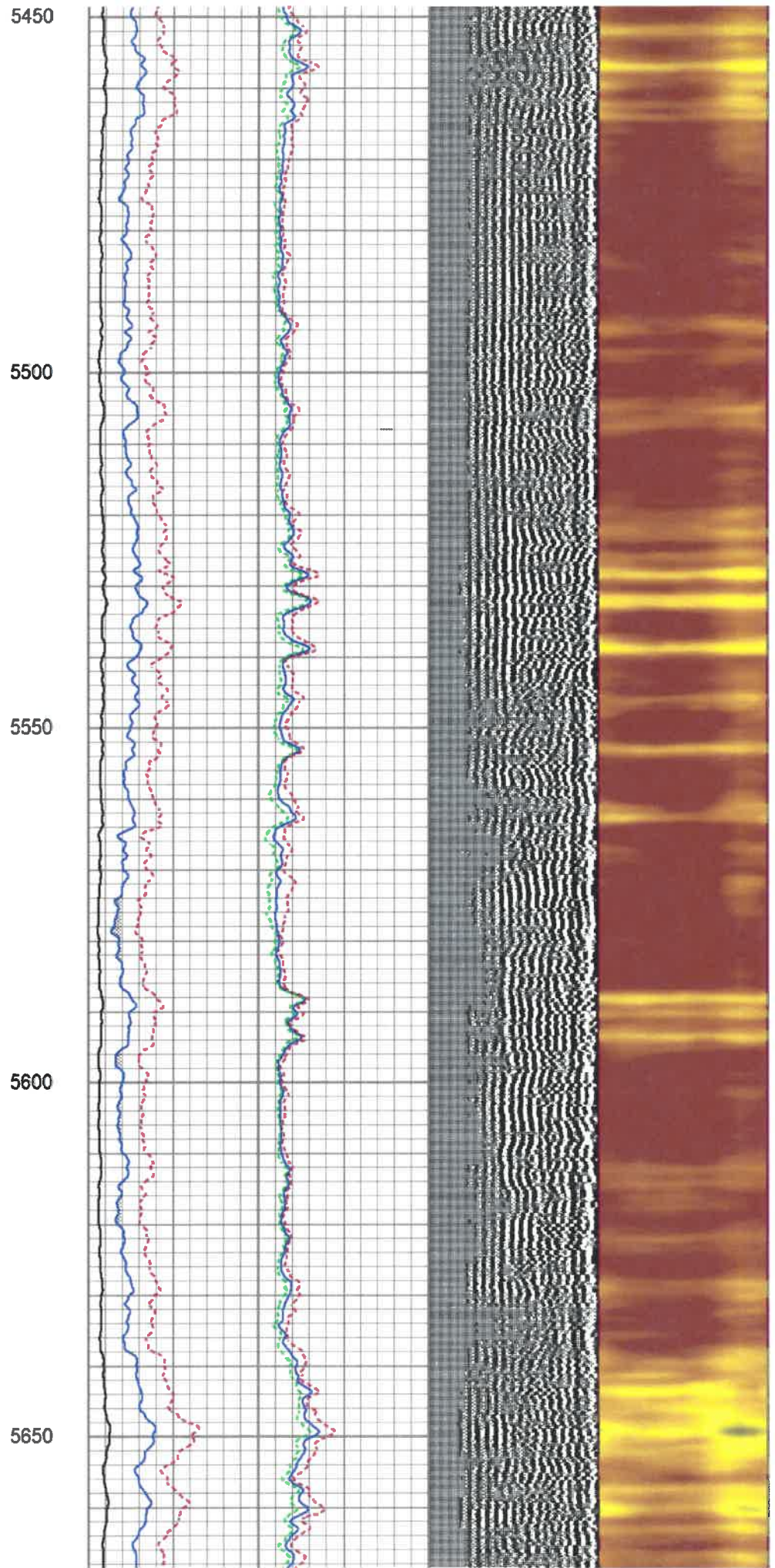
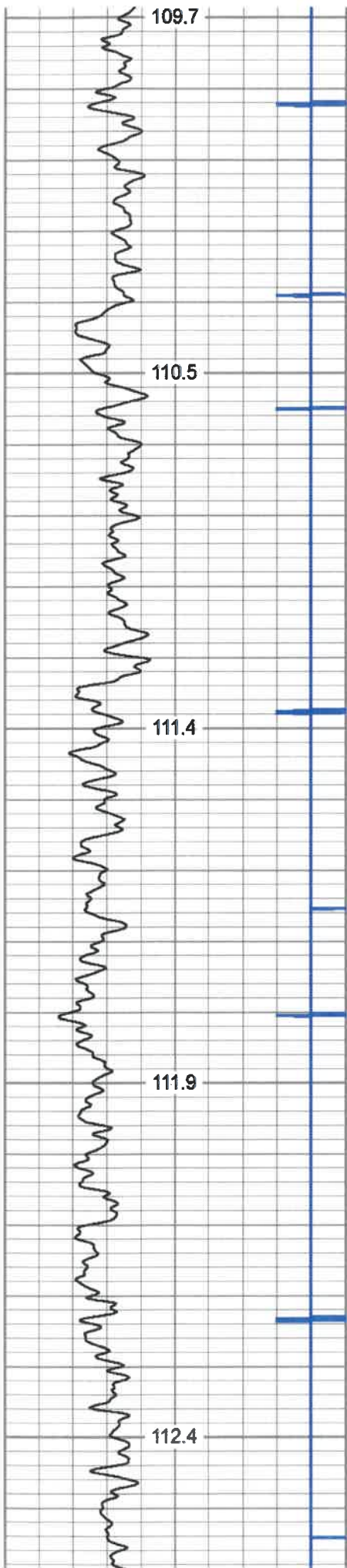


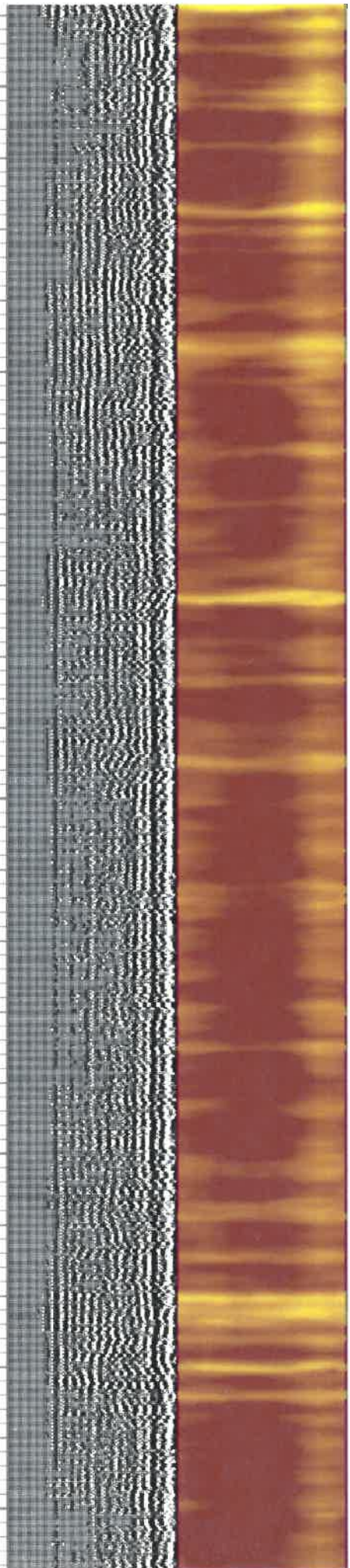
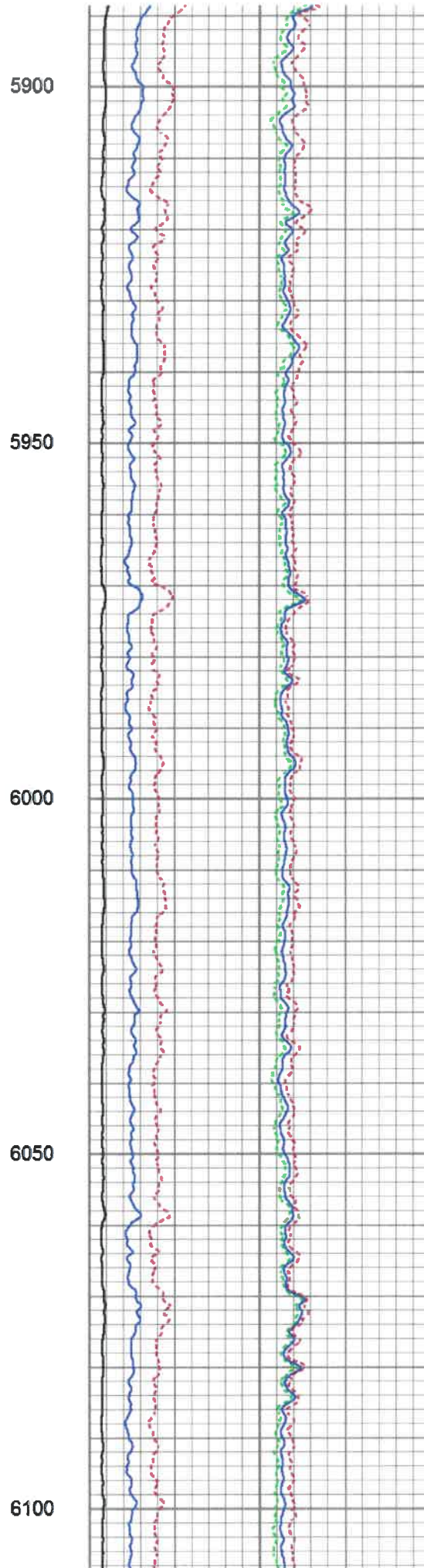
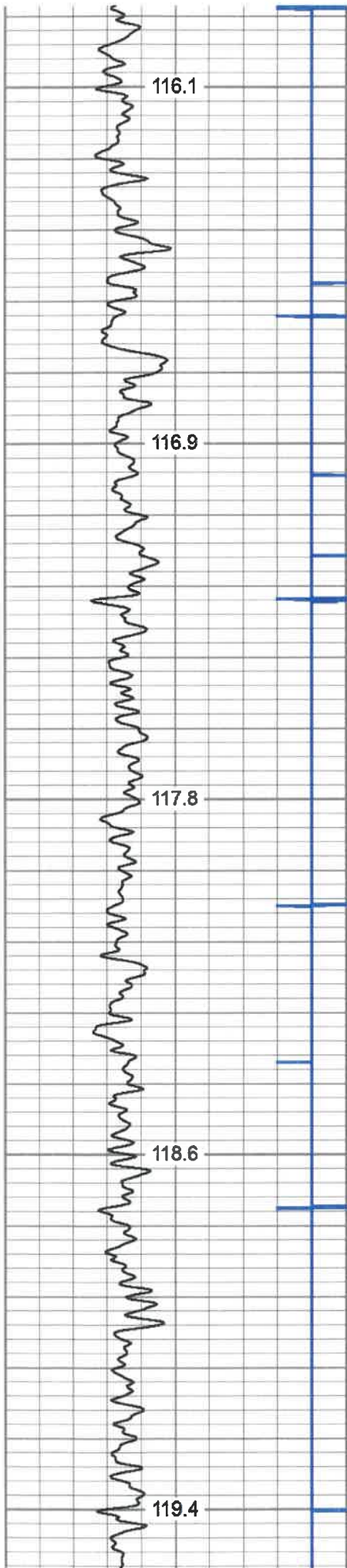


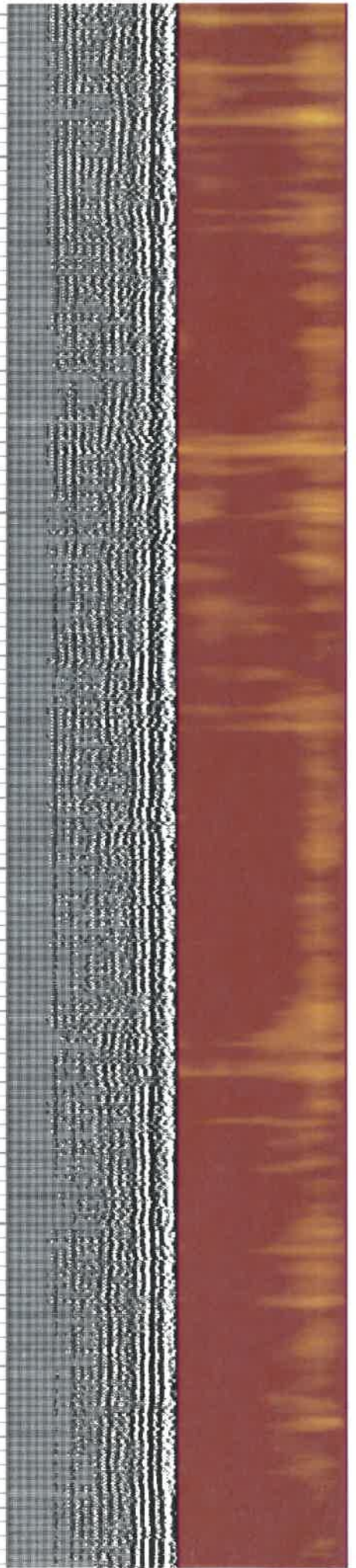
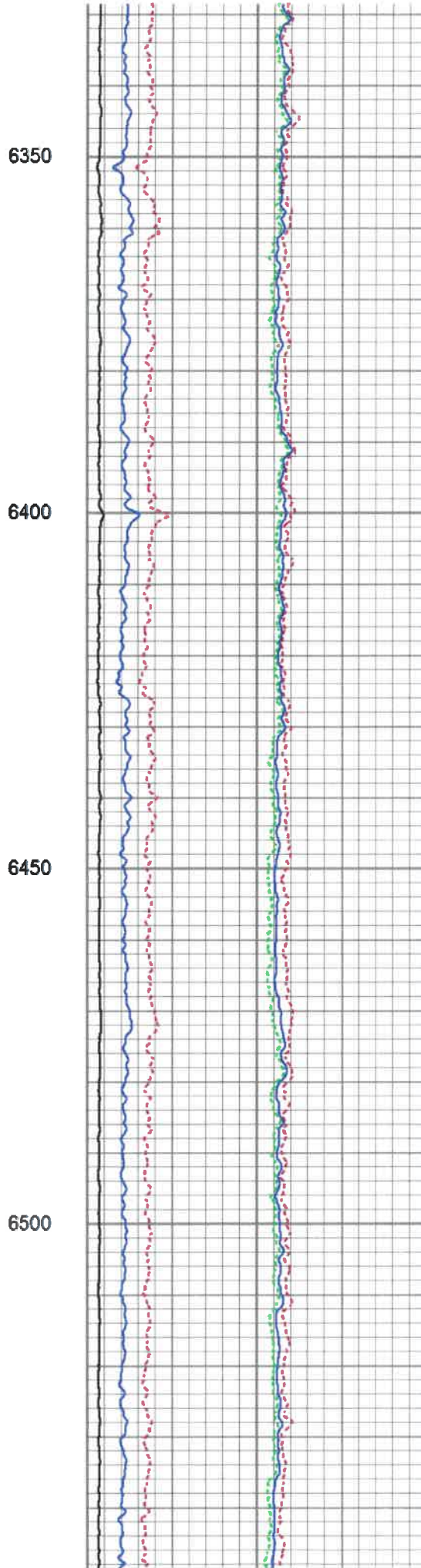
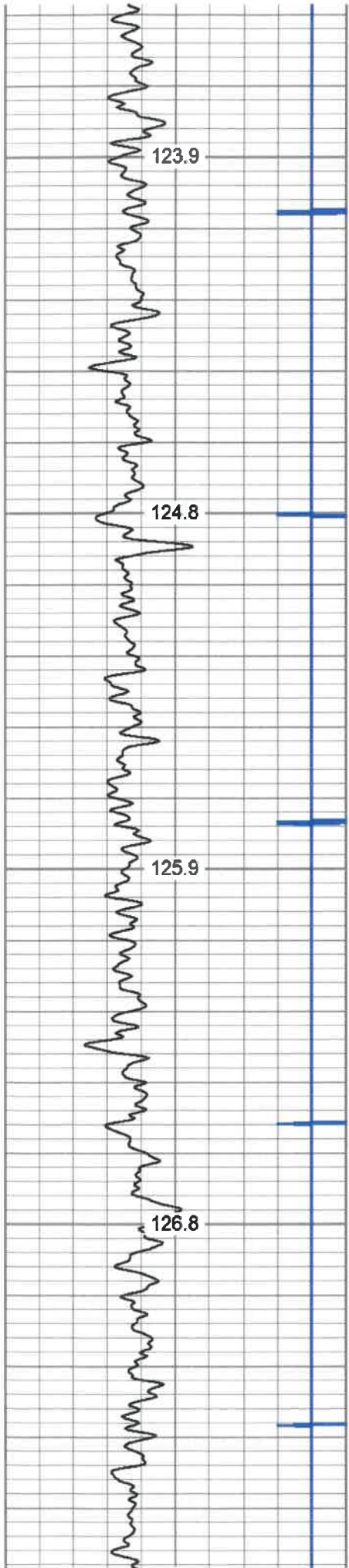


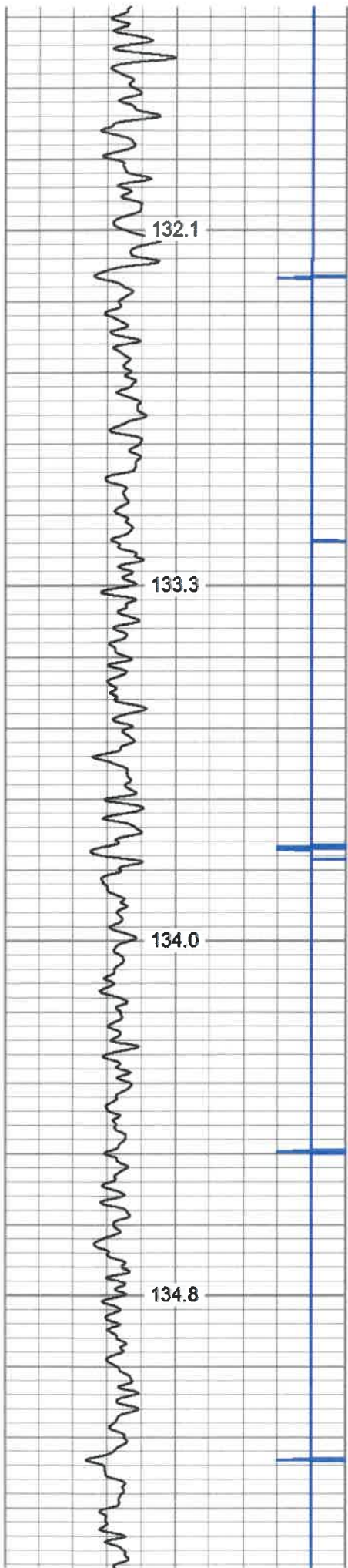










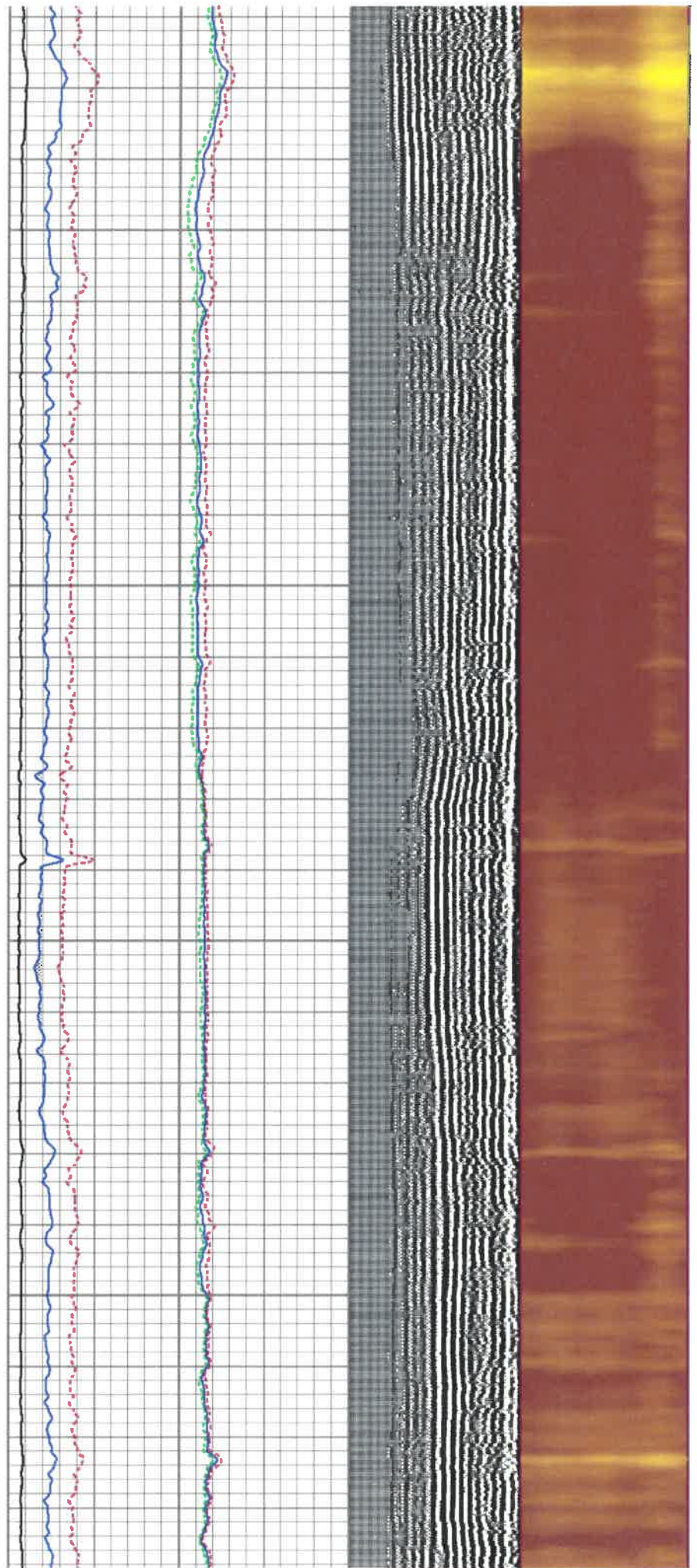


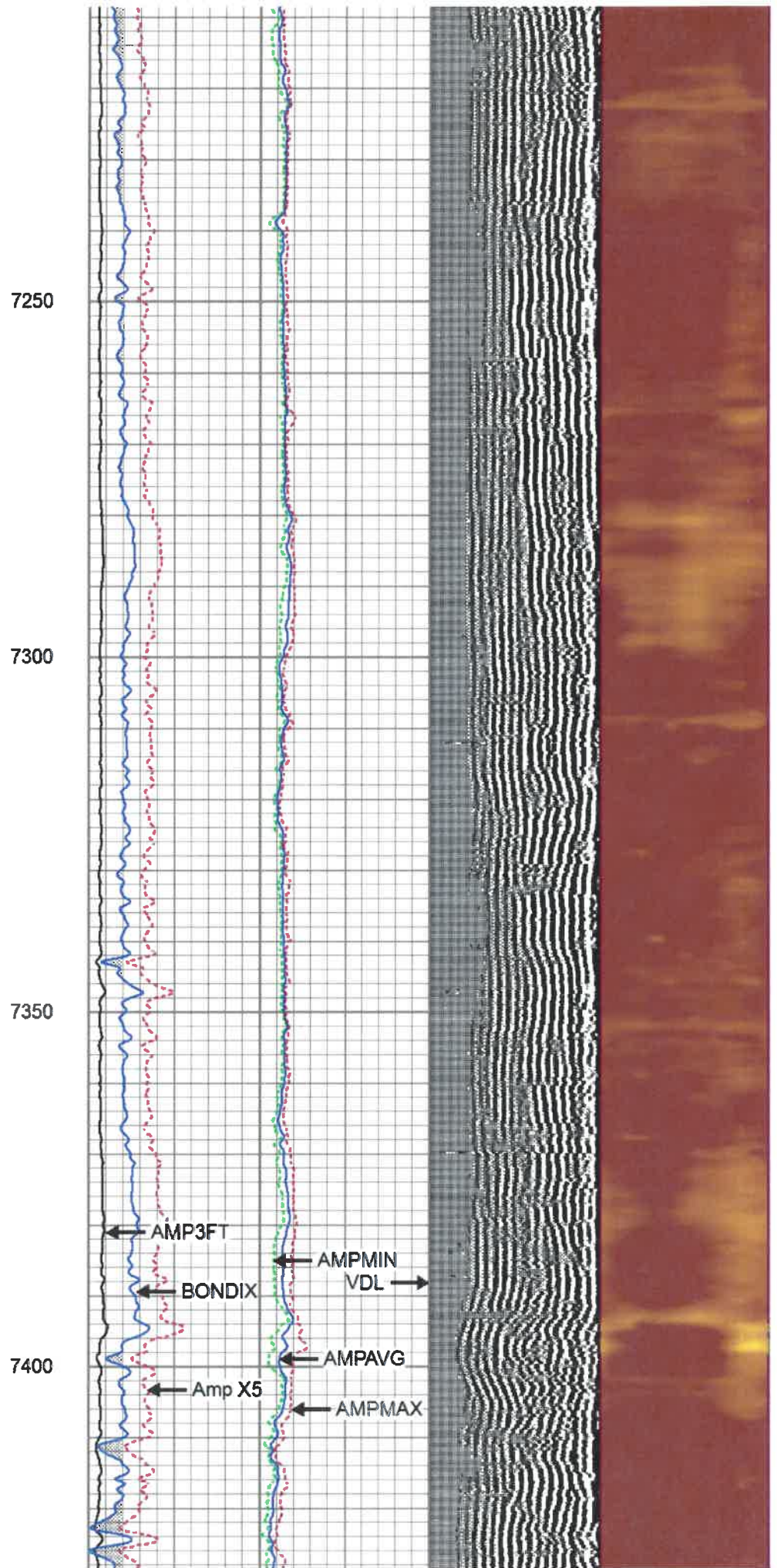
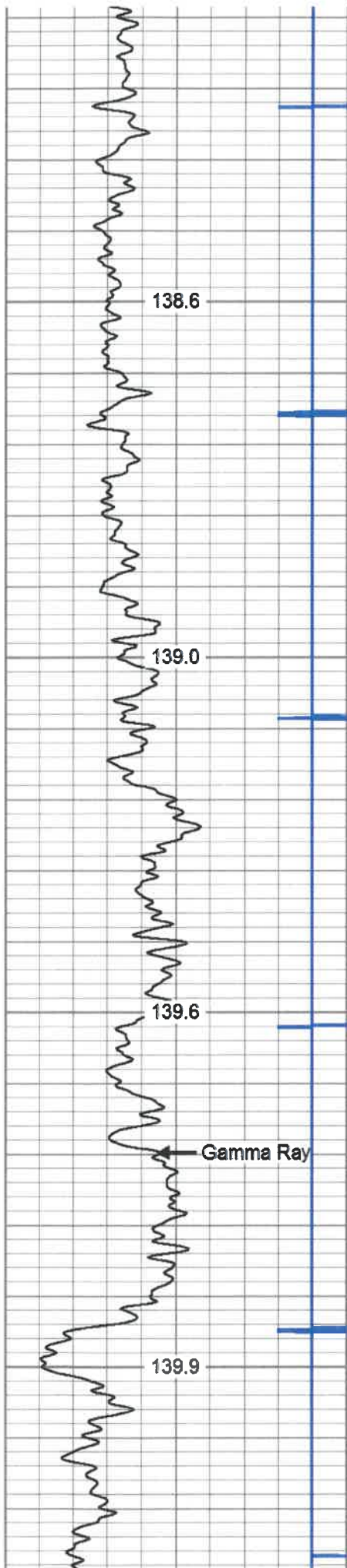
6800

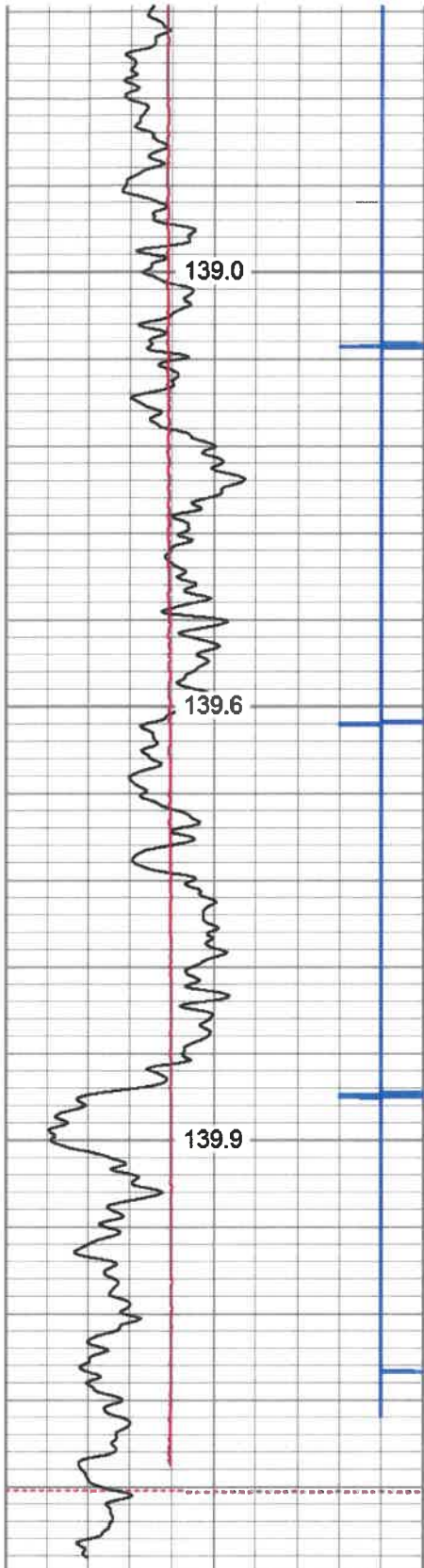
6850

6900

6950

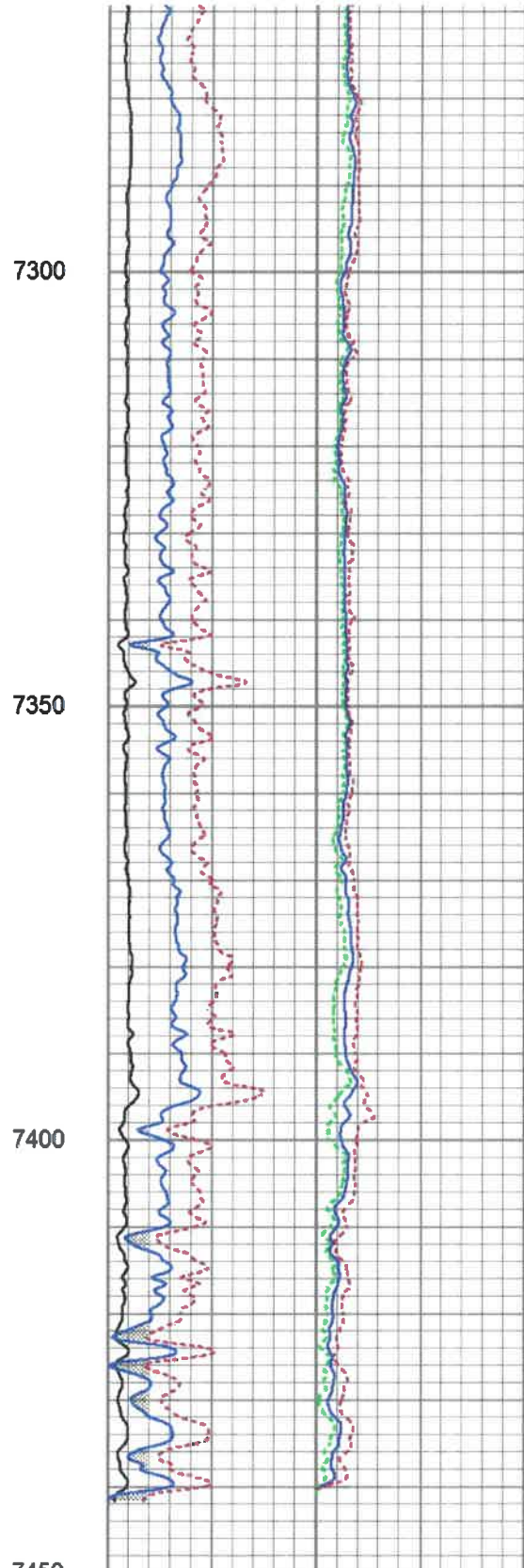




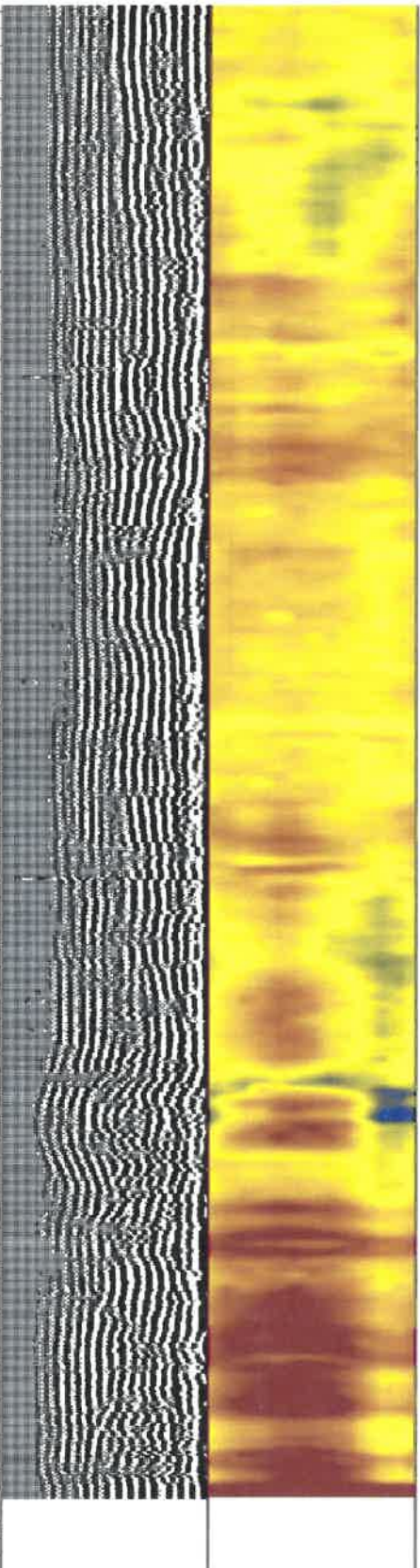


280	Travel Time (usec)	180
9	Casing Collar	-1
0	Gamma Ray (GAPI)	180
0	TEMP (degF)	100
180	GR (GAPI)	360

TEMP
(degF)



0	Amplitude (mV)	100
0	Amp X5 (mV)	20
1	BONDIX	0



Sector Amp AVG	VDL	1	Sector Map	12
Sector Amp MAX	200 (usec)	1200		
Sector Amp MIN				



Calibration Casing Diameter: 5.500 in
 Calibration Depth: 28.925 ft

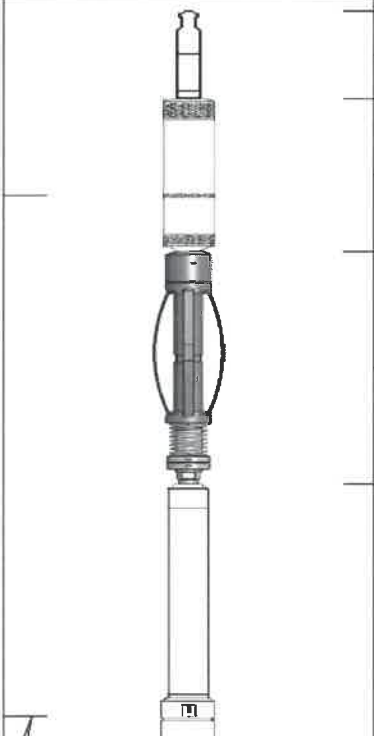
Master Calibration, performed (Derived):

	Raw (v)		Calibrated (mv)		Results	
	Zero	Cal	Zero	Cal	Gain	Offset
3'	0.000	0.451	3.500	71.921	100.804	3.499
CAL	0.000	0.440				
5'	-0.122	0.429	3.500	71.921	124.116	18.631
SUM						
S1	0.000	1.316	0.000	100.000	75.993	-0.002
S2	0.000	1.414	0.000	100.000	70.729	-0.001
S3	0.000	1.326	0.000	100.000	75.417	-0.001
S4	0.000	1.200	0.000	100.000	83.305	-0.001
S5	0.000	1.233	0.000	100.000	81.104	-0.001
S6	0.000	1.229	0.000	100.000	81.342	-0.001
S7	0.000	1.249	0.000	100.000	80.070	-0.001
S8	0.000	1.301	0.000	100.000	76.893	-0.001
S9	0.000	1.358	0.000	100.000	73.621	-0.001
S10	0.000	1.166	0.000	100.000	85.771	-0.001
S11	0.000	1.113	0.000	100.000	89.880	-0.002
S12	0.000	1.183	0.000	100.000	84.549	-0.002

Temperature Calibration Report

Serial Number: T12_01
 Tool Model: Tek12
 Performed: Fri Oct 22 17:21:06 2010

	Reference	Reading
Low Reference:	0.00 degF	0.00 usec
High Reference:	1.00 degF	1.00 usec
Gain:	0.33	
Offset:	0.00	
Delta Spacing	2	

Sensor	Offset (ft)	Schematic	Description	Length (ft)	O.D. (in)	Weight (lb)
CCL	19.20		Titan-1.4375 1 7/16 Titan Type II Cable Head	1.03	1.44	5.00
			CCL-312tekco (101) Tekco 3 1/8" 450 Deg. "F" SmCo Logging CCL	1.82	3.12	25.00
			Tek-2.75 2 3/4" Tekco Adjustable Centralizer	2.73	2.75	25.00
TEMP	13.04					

