



RADIAL BOND LOG
GAMMA RAY
VDL,CCL

Company ANTERO RESOURCES CORPORATION
 Well OXFORD 97 GHS
 Field MARCELLUS
 County DODDRIDGE
 State WV

Company ANTERO RESOURCES CORPORATION
 Well OXFORD 97 GHS
 Field MARCELLUS
 County DODDRIDGE State WV

Location: API #: 47017065850000

AFE A06752

SEC TWP RGE

Elevation

Elevation

Permanent Datum
 Log Measured From
 Drilling Measured From

K.B.
 D.F.
 G.L.

Date	8-27-19	
Run Number	1	
Depth Driller	20885	
Depth Logger	7060	
Bottom Logged Interval	7060	
Top Log Interval	SURFACE	
Open Hole Size	N/A	
Type Fluid	WATER	
Density / Viscosity	N/A	
Max. Recorded Temp.	139 DEG	
Estimated Cement Top	SURFACE	
Time Well Ready	N/A	
Time Logger on Bottom	N/A	
Equipment Number	624874	
Location	BRIDGEPORT	
Recorded By	P DAVIDSON	
Witnessed By	SCOTT KOCH	

Borehole Record		Casing Record					
Run Number	Bit	From	To	Size	Weight	From	To
				5.5	23	20885	0

<<< Fold Here >>>

All interpretations are opinions based on inferences from electrical or other measurements and we cannot and do not guarantee the accuracy or correctness of any interpretation, and we shall not, except in the case of gross or willful negligence on our part, be liable or responsible for any loss, costs, damages, or expenses incurred or sustained by anyone resulting from any interpretation made by any of our officers, agents or employees. These interpretations are also subject to our general terms and conditions set out in our current Price Schedule.

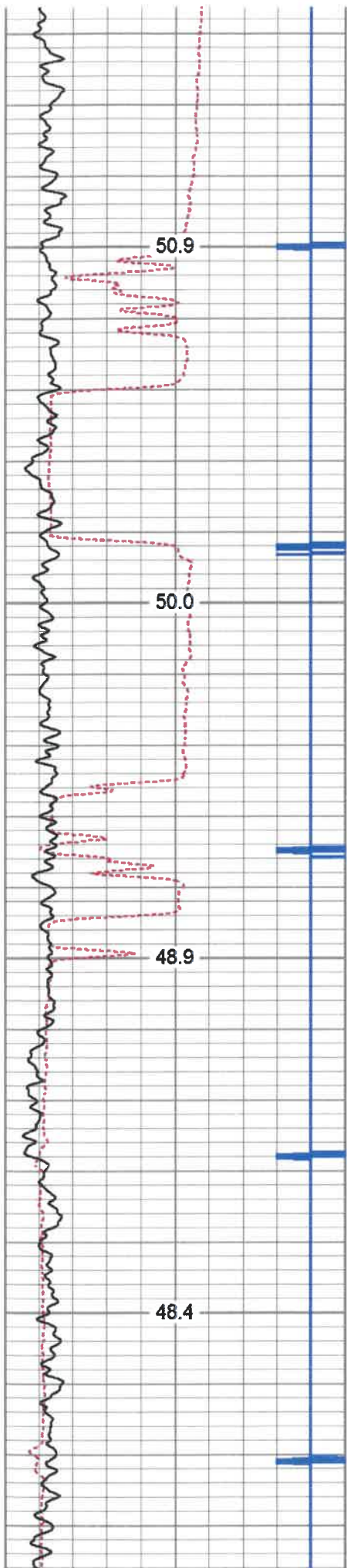
Comments

MARKER JOINT @ 6113'-6133'
 LOG TD 7060'
 CEMENT TOP @ SURFACE
 LOGGED UNDER 1500 PSI.

THANK YOU FOR CHOOSING KLX ENERGY



MAIN PASS 1500 PSI

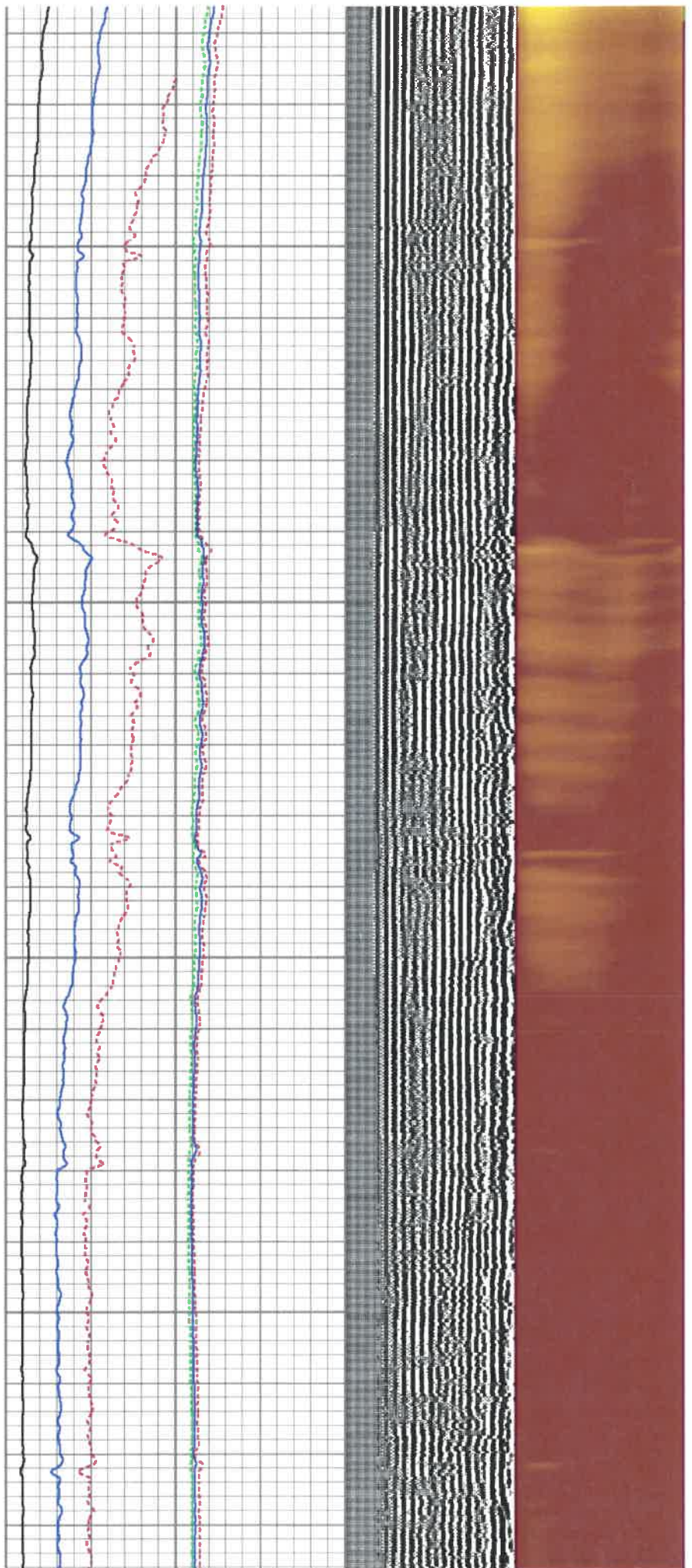


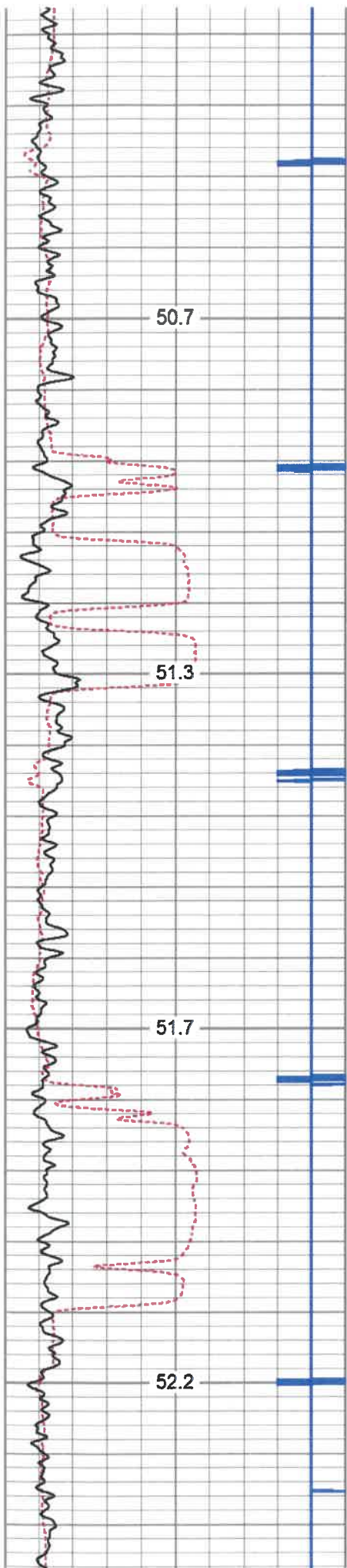
200

250

300

350



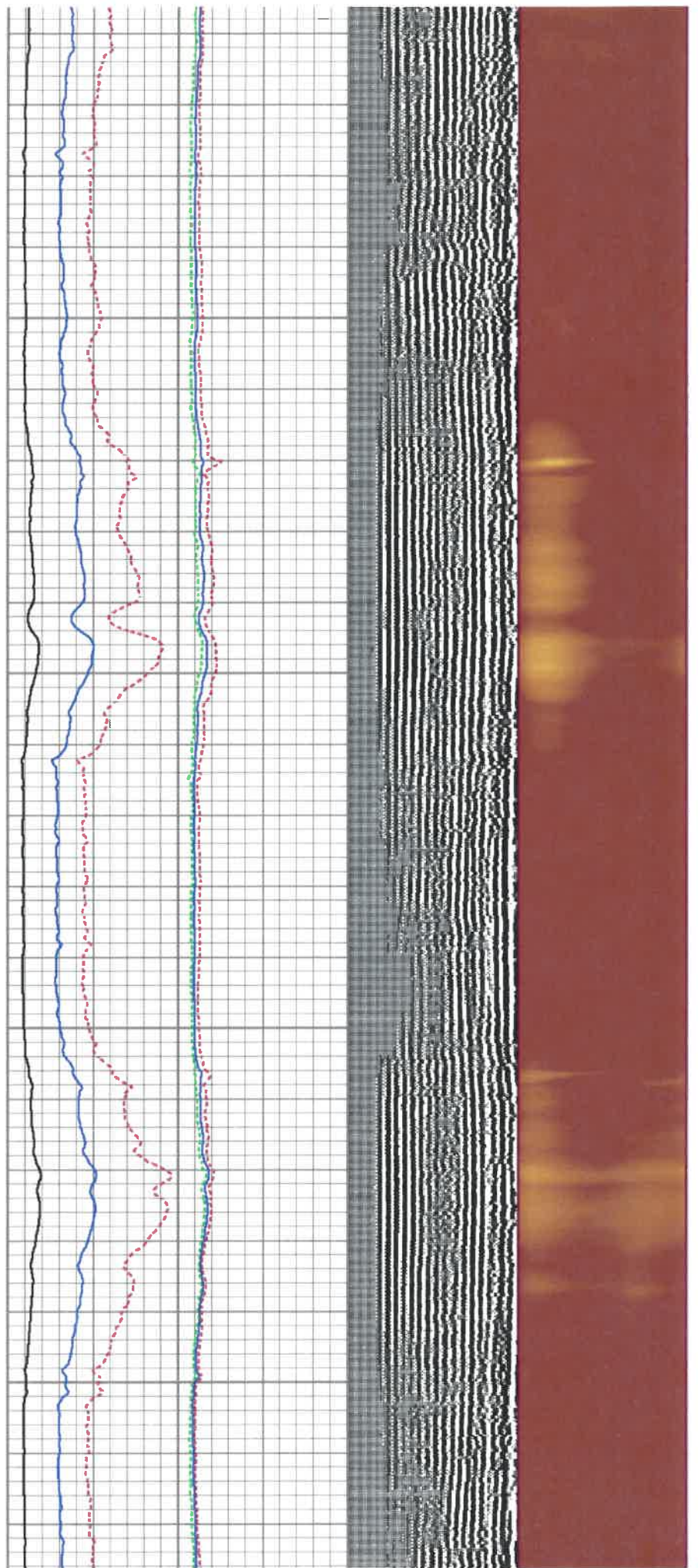


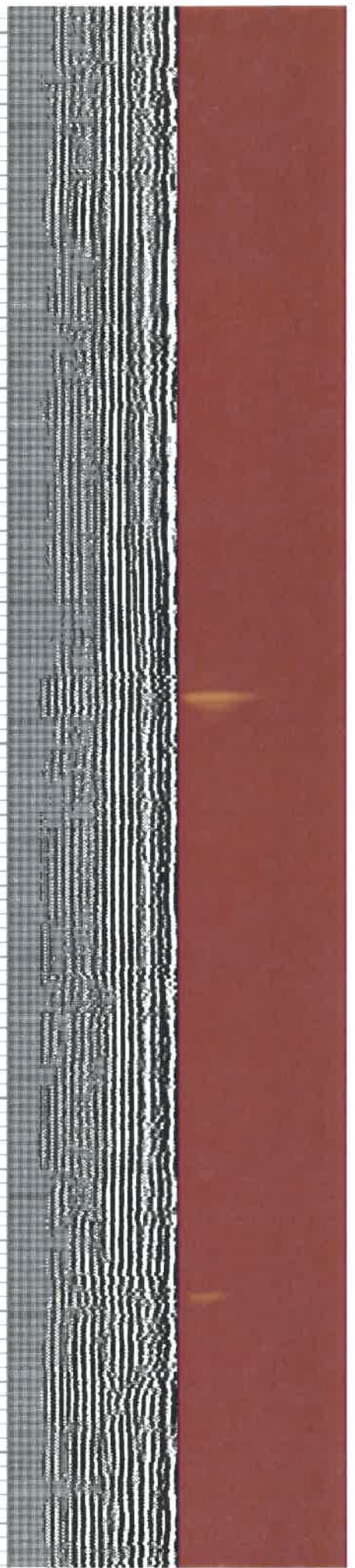
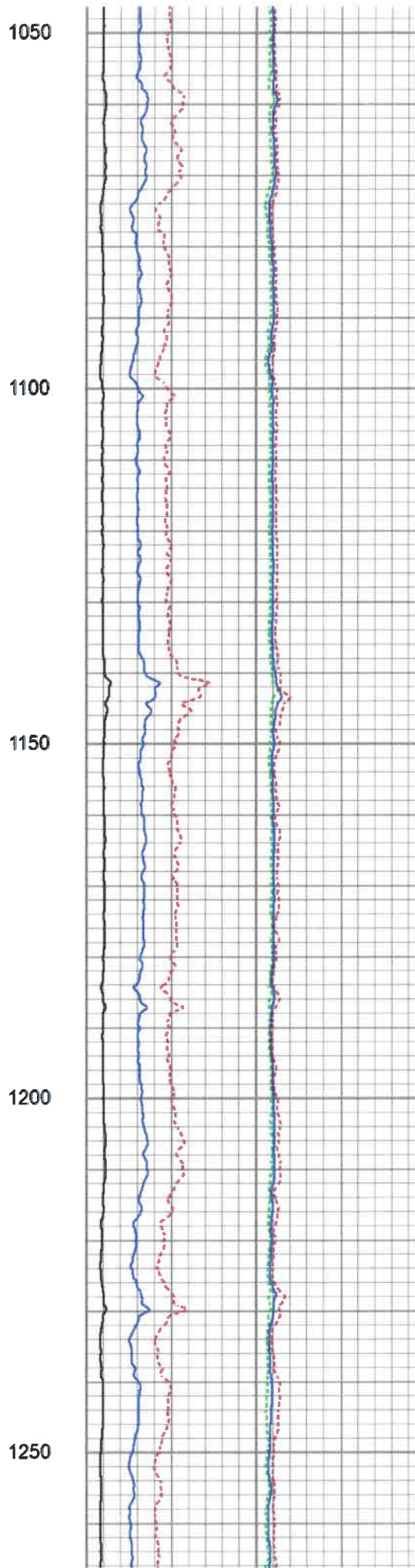
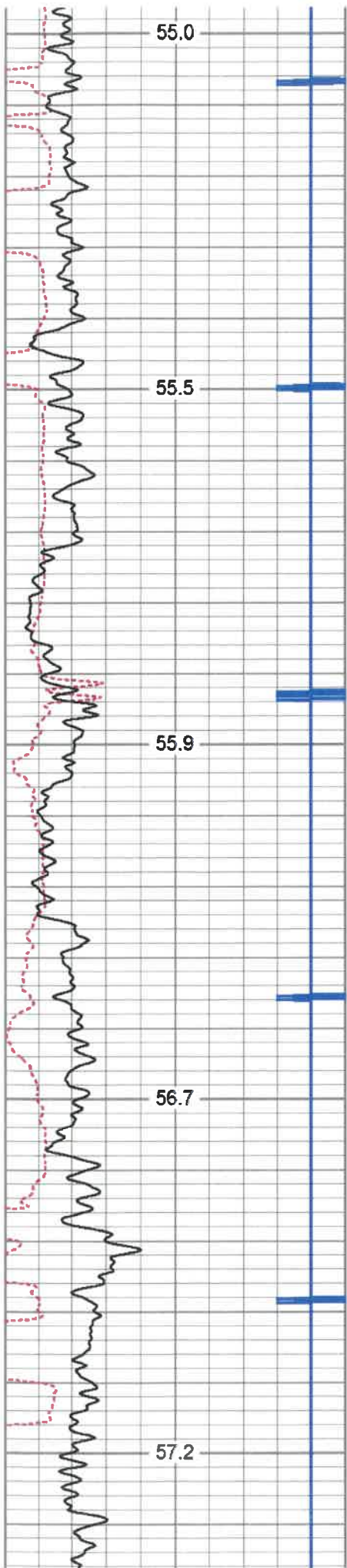
650

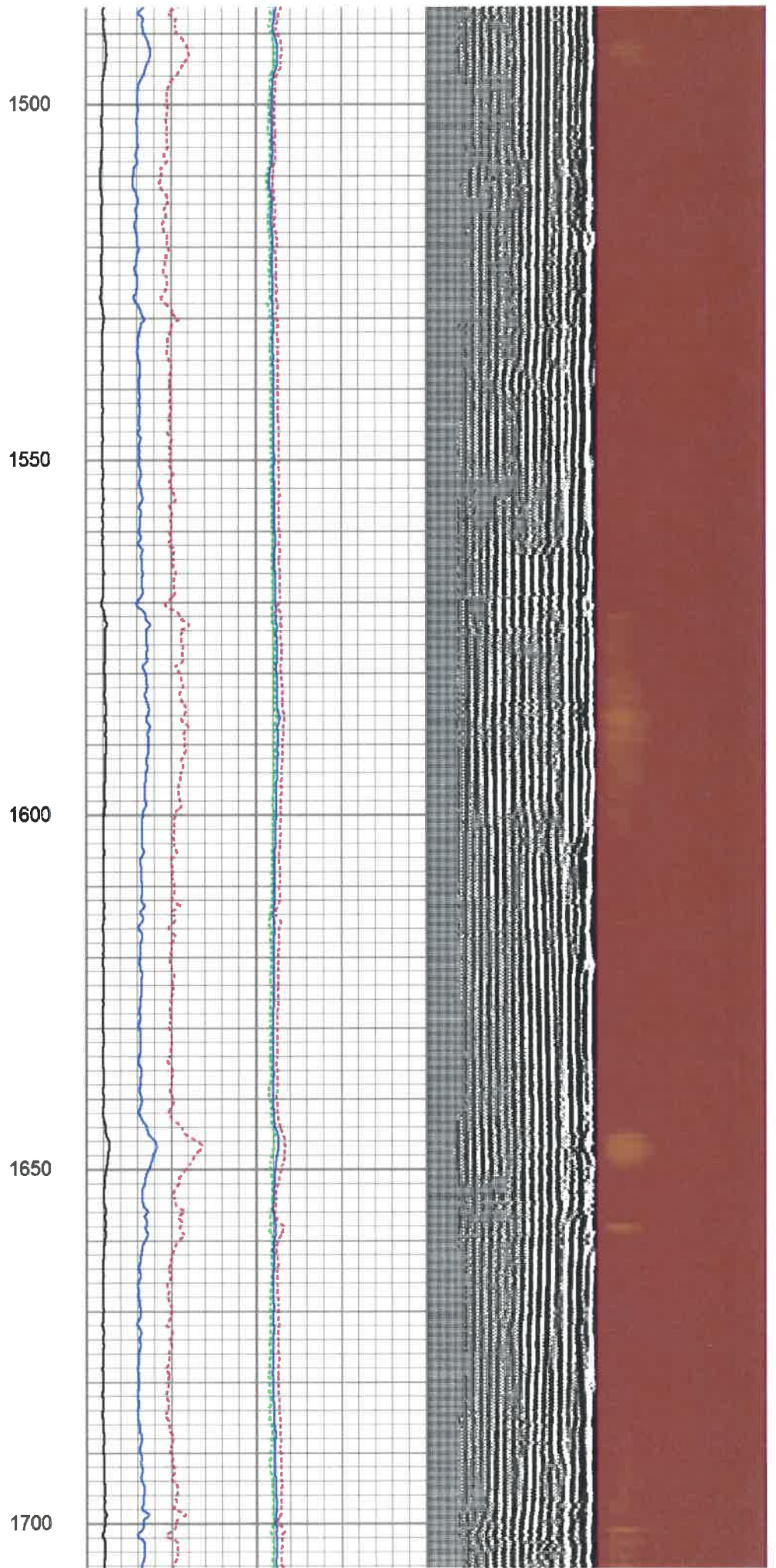
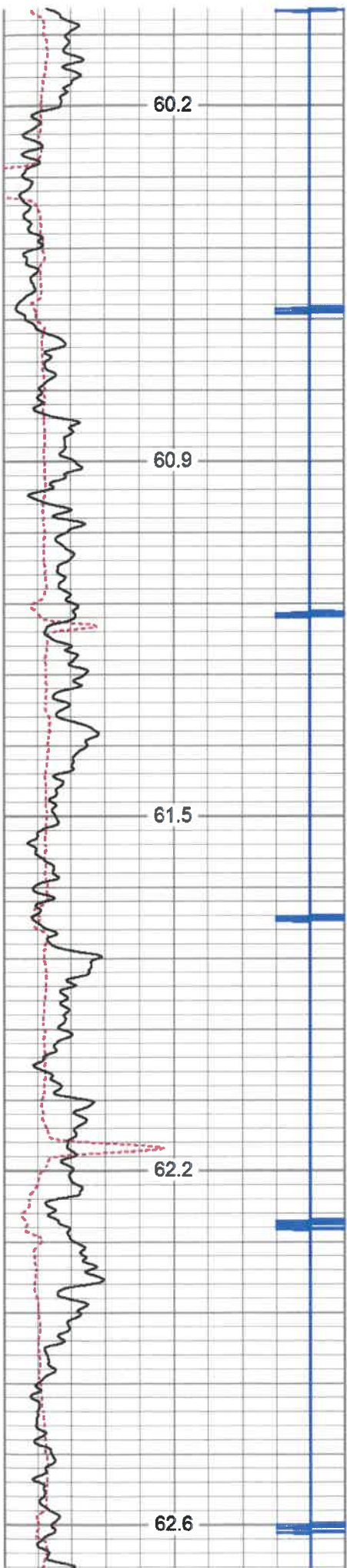
700

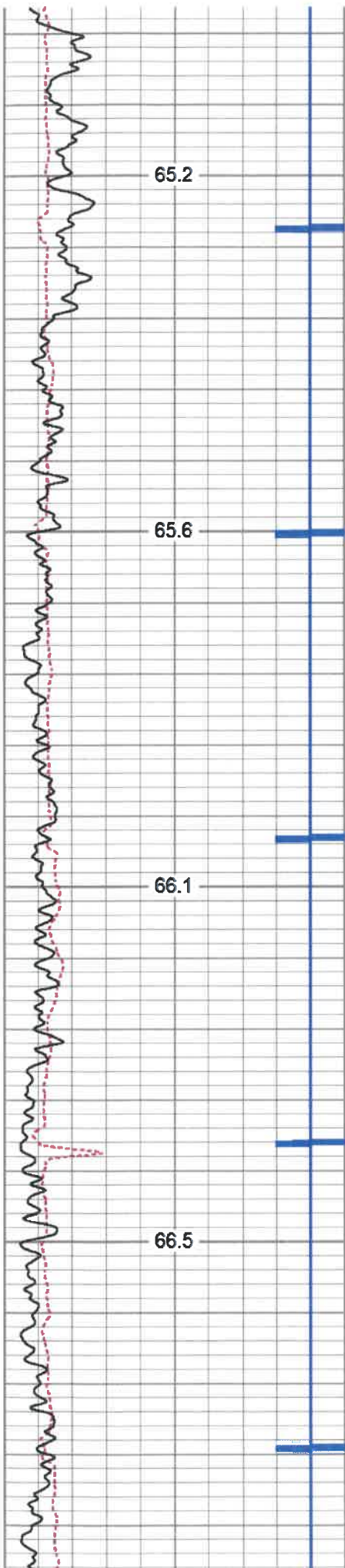
750

800







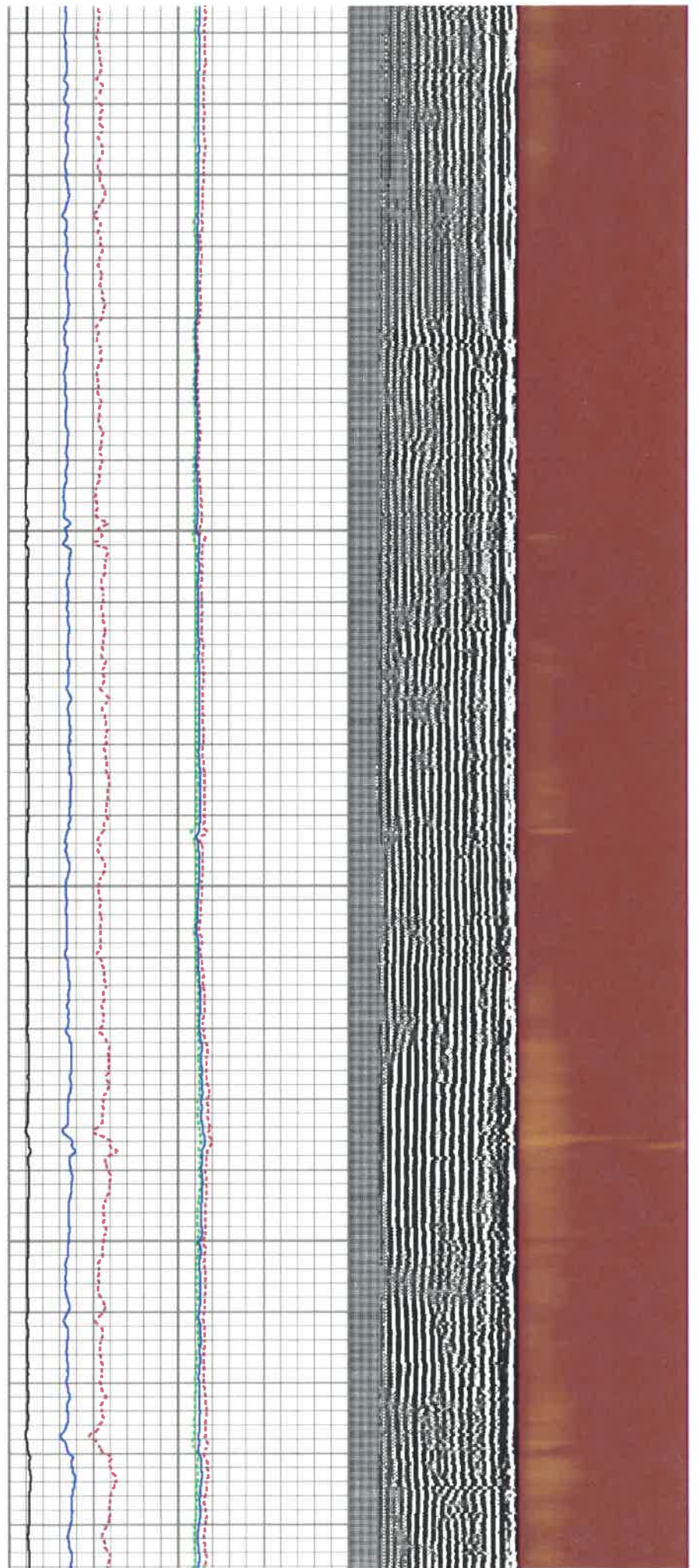


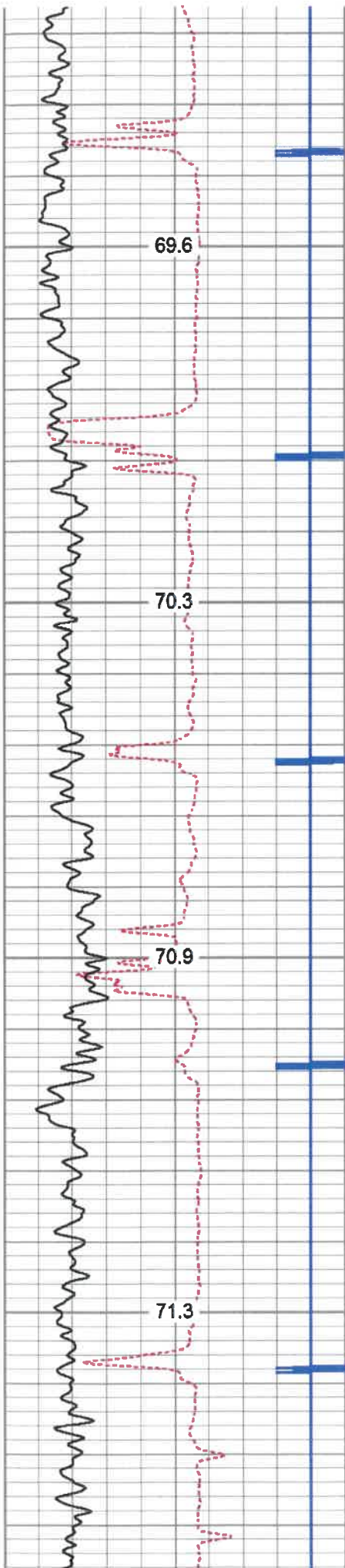
1950

2000

2050

2100



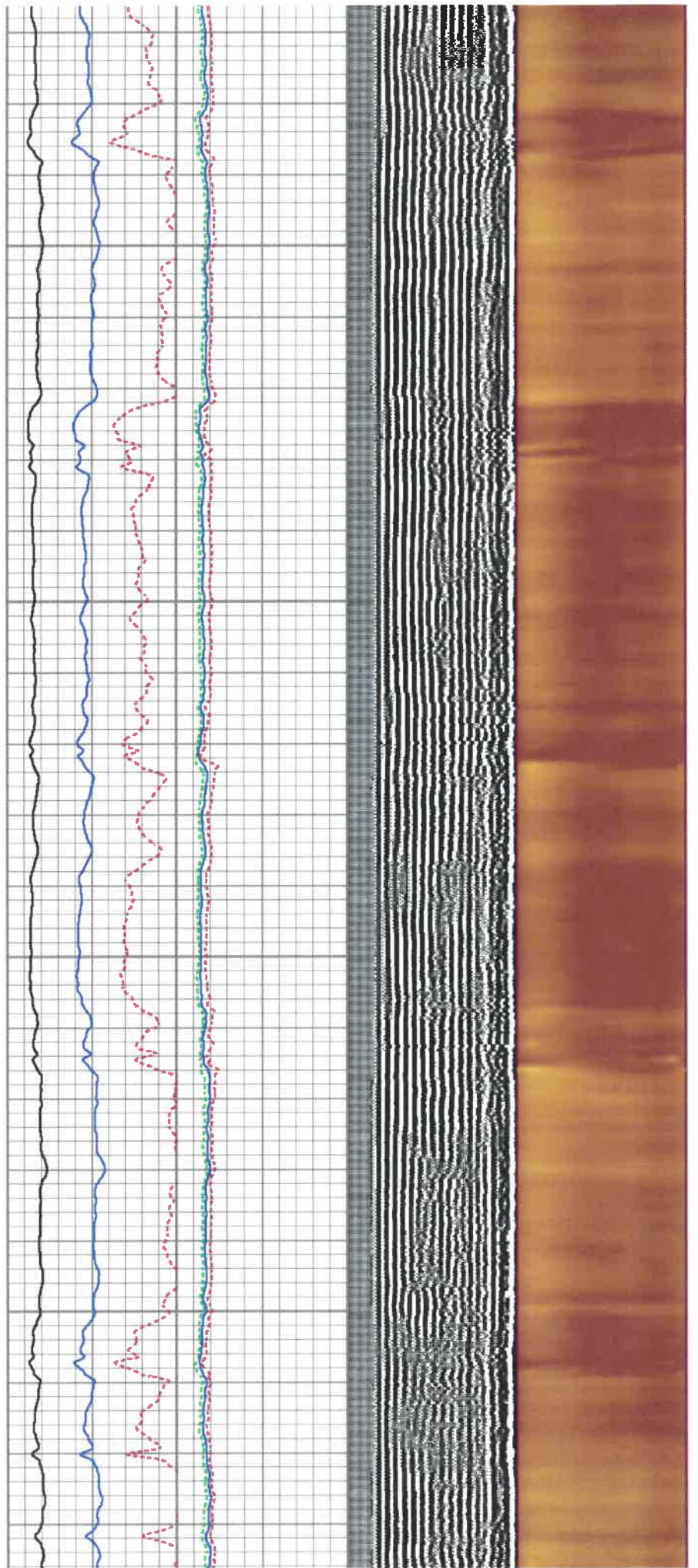


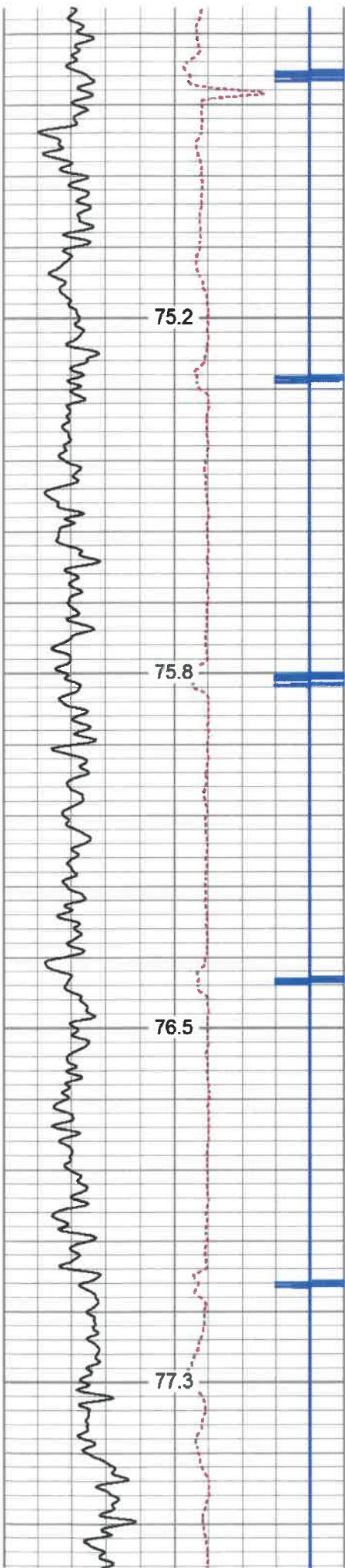
2400

2450

2500

2550



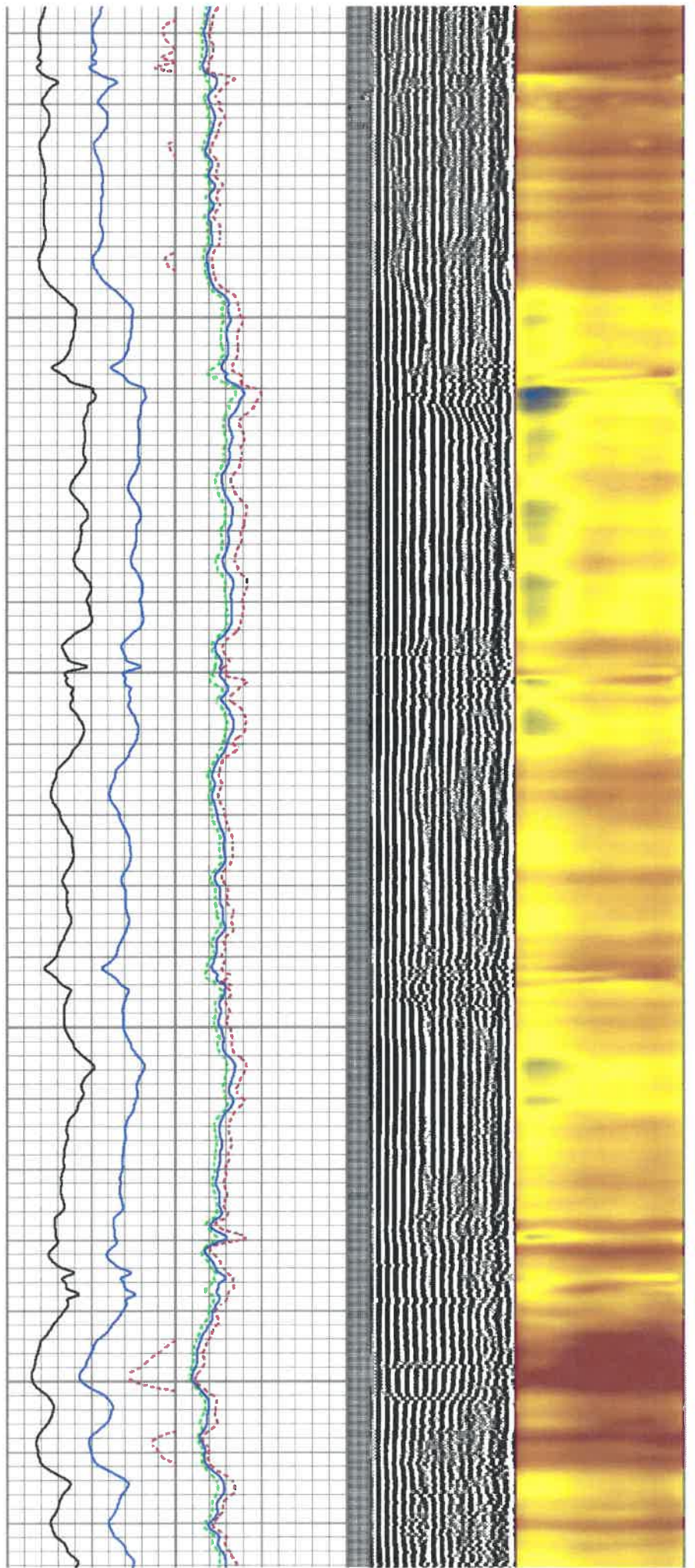


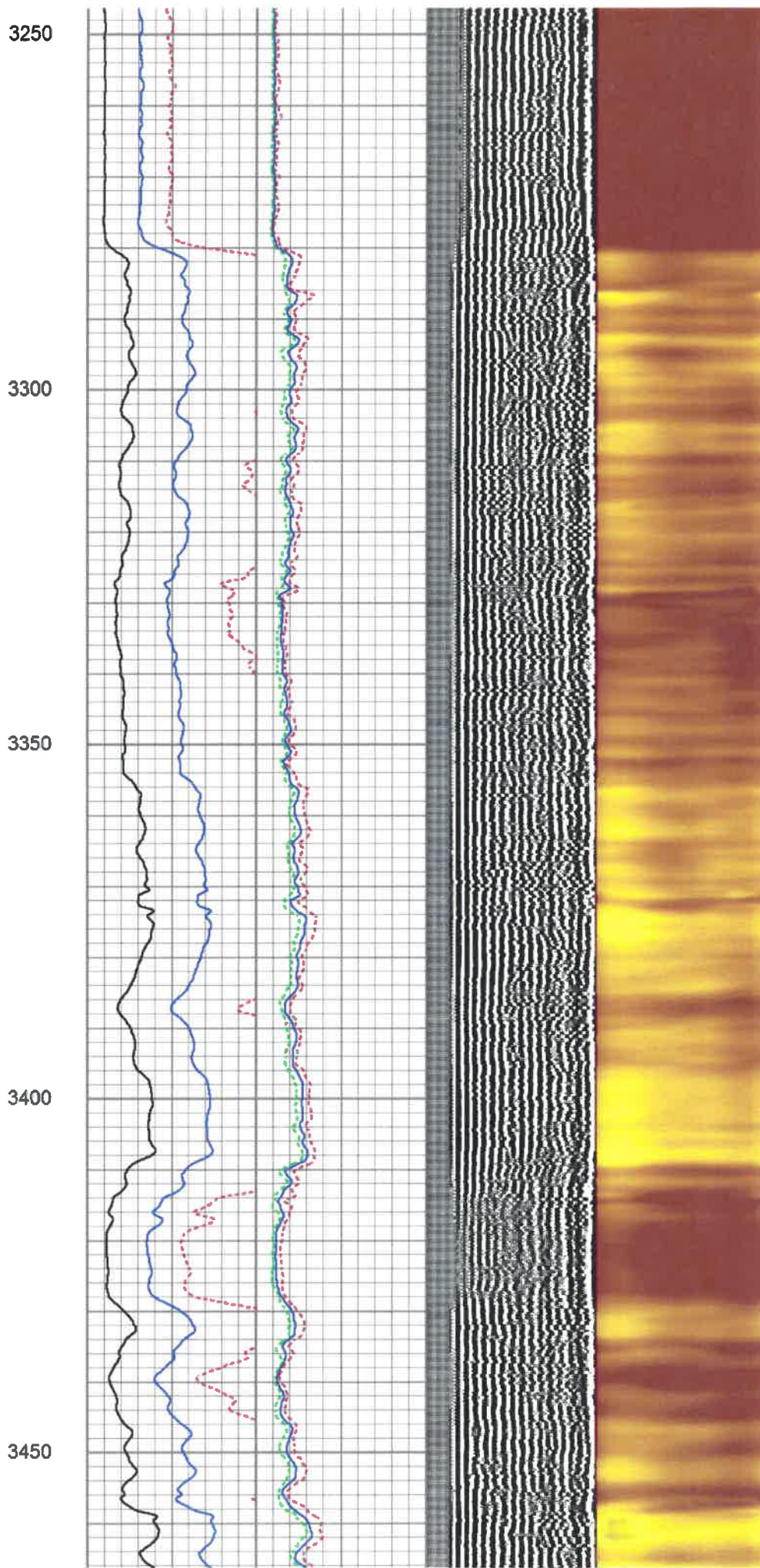
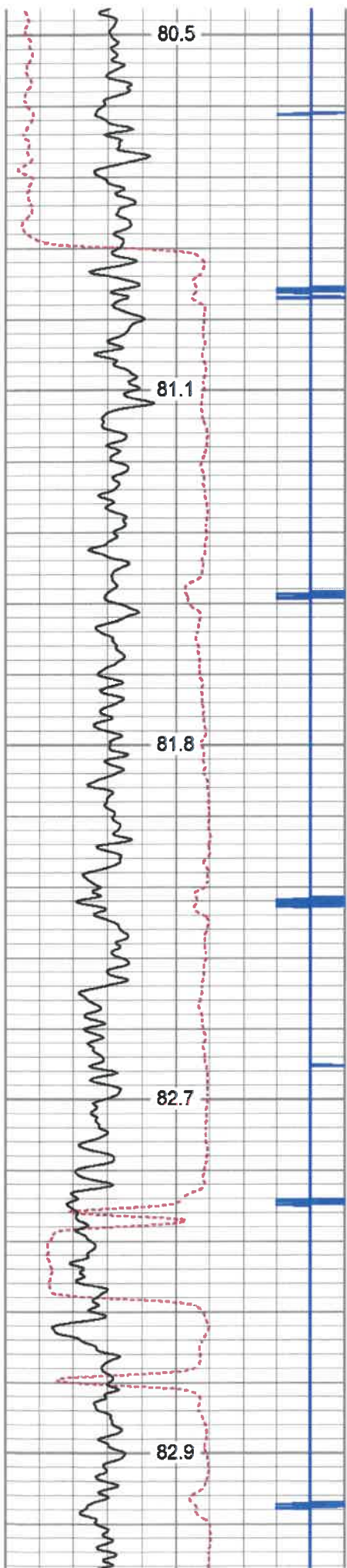
2850

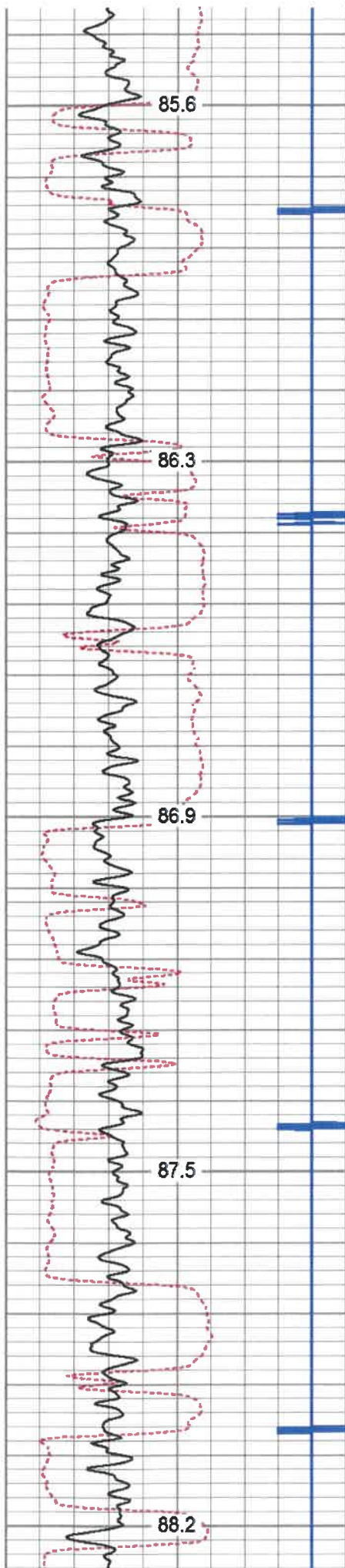
2900

2950

3000







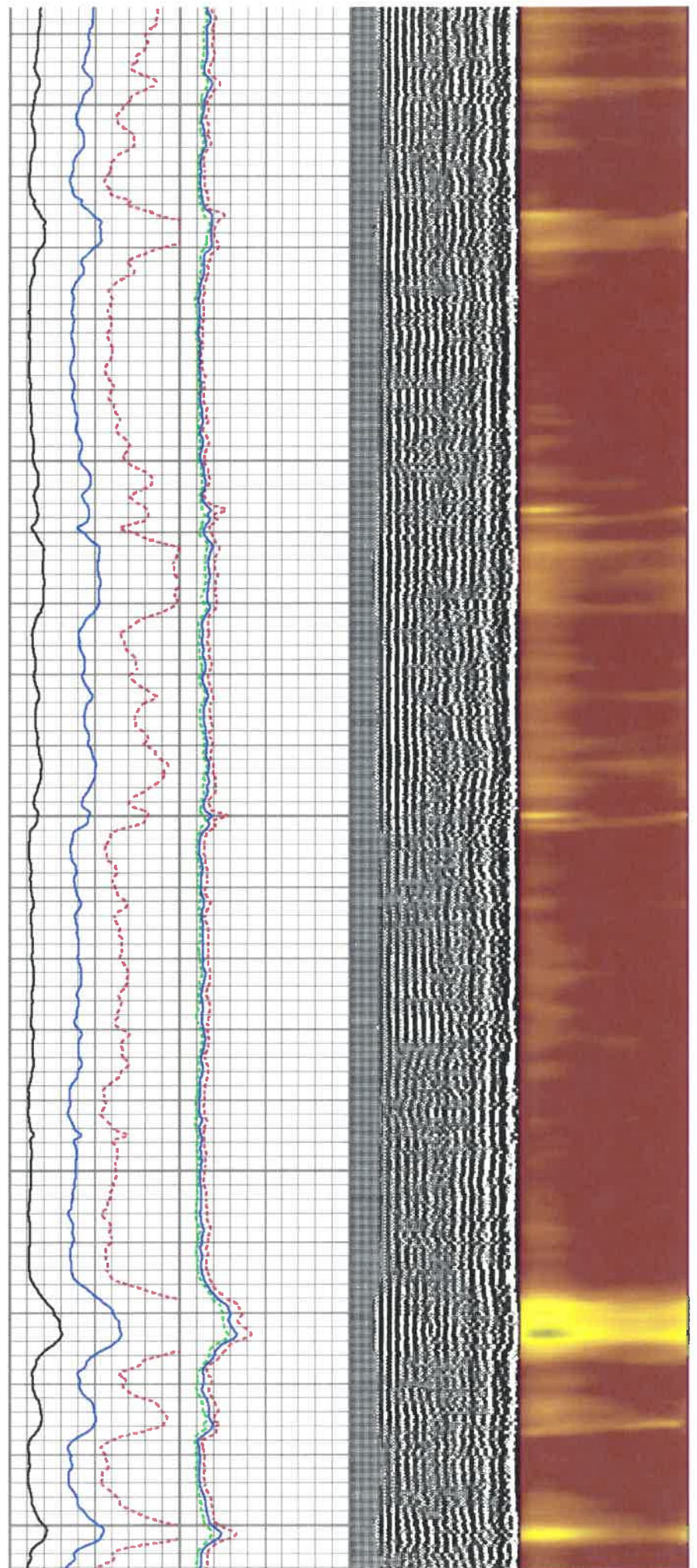
3700

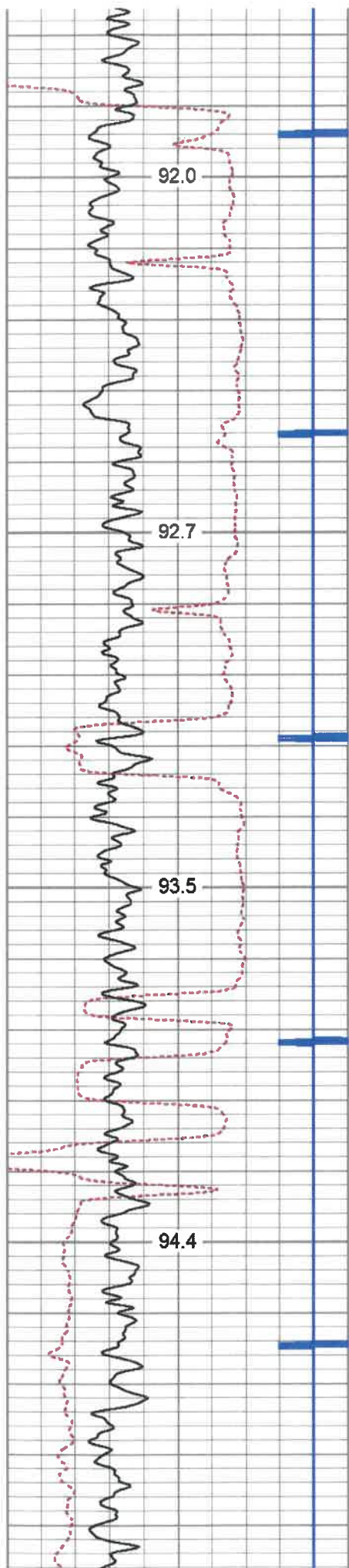
3750

3800

3850

3900



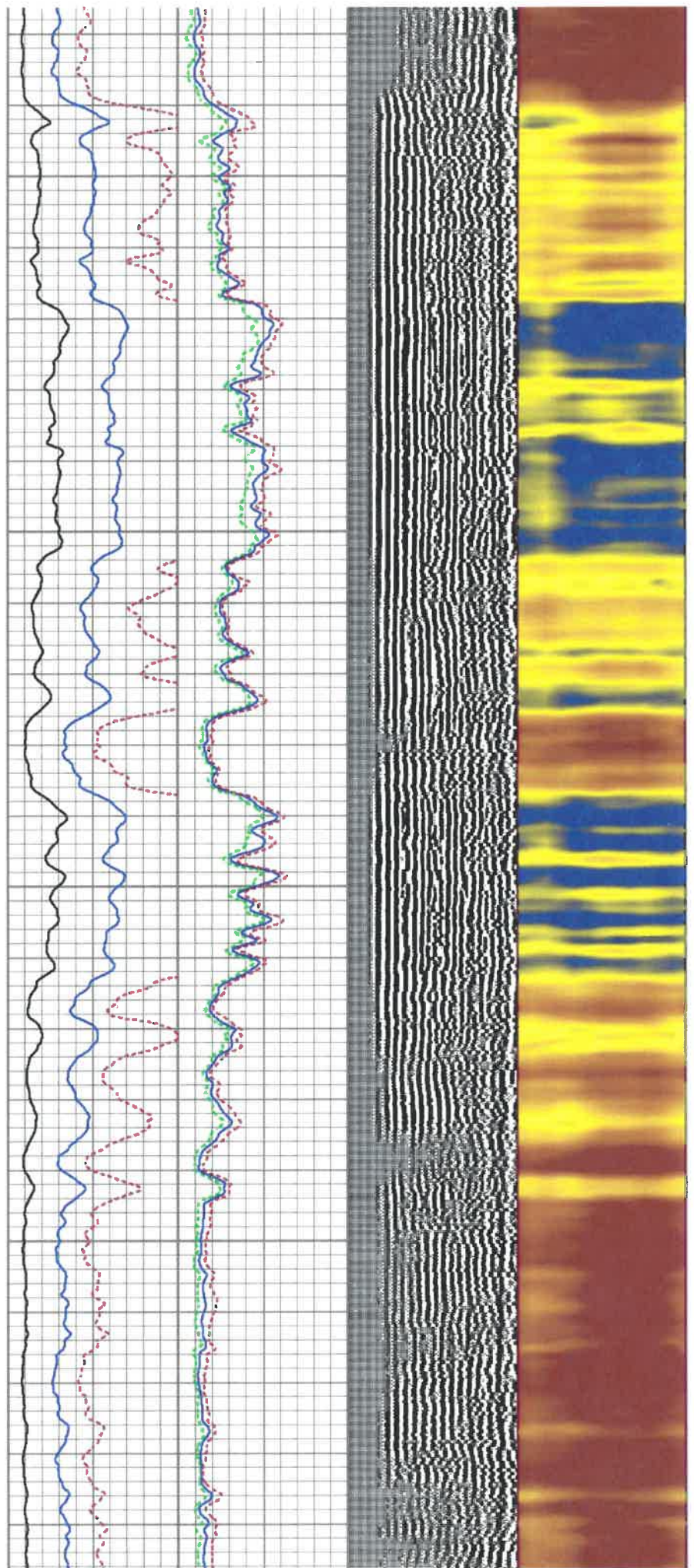


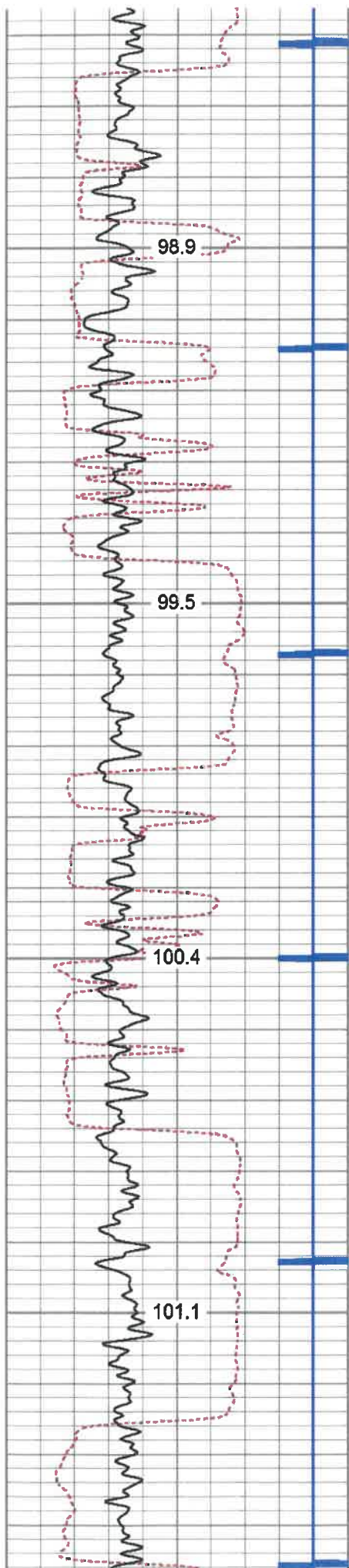
4150

4200

4250

4300



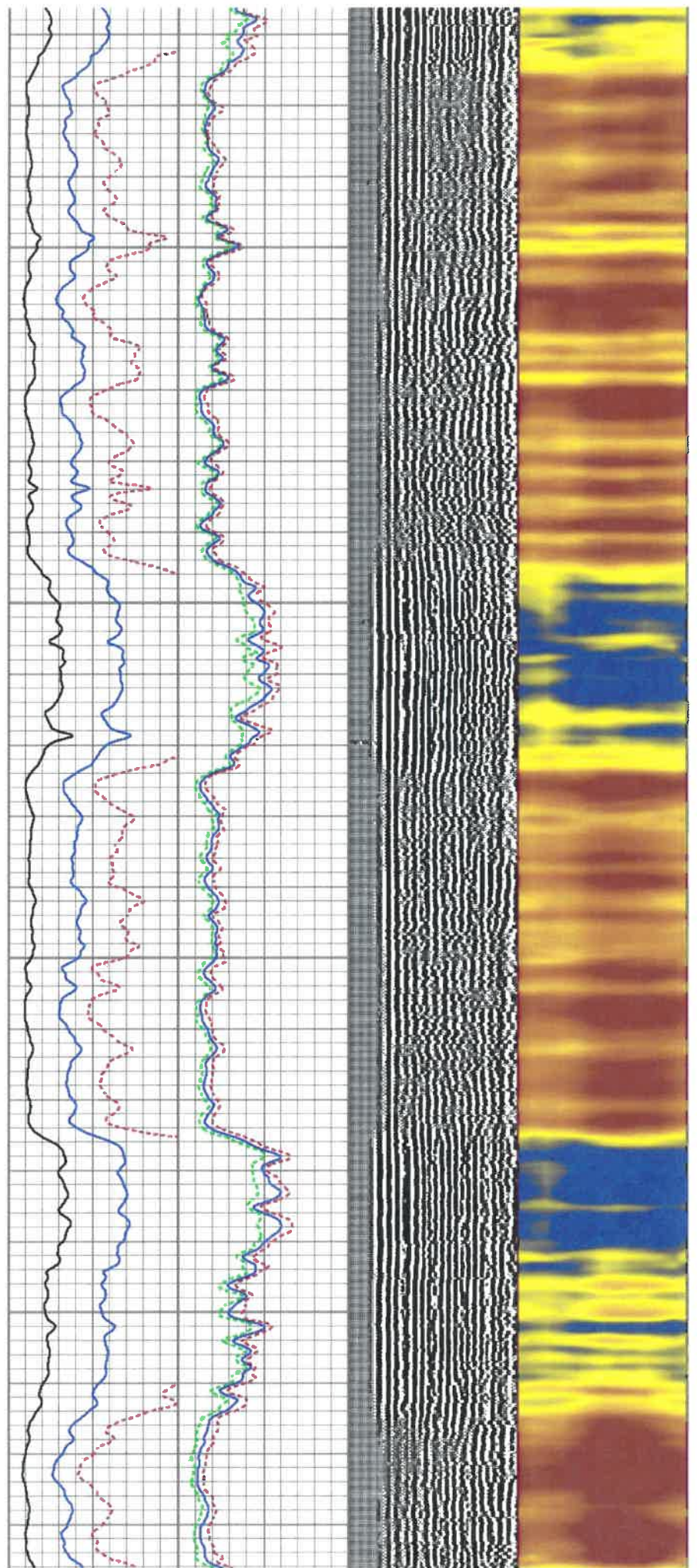


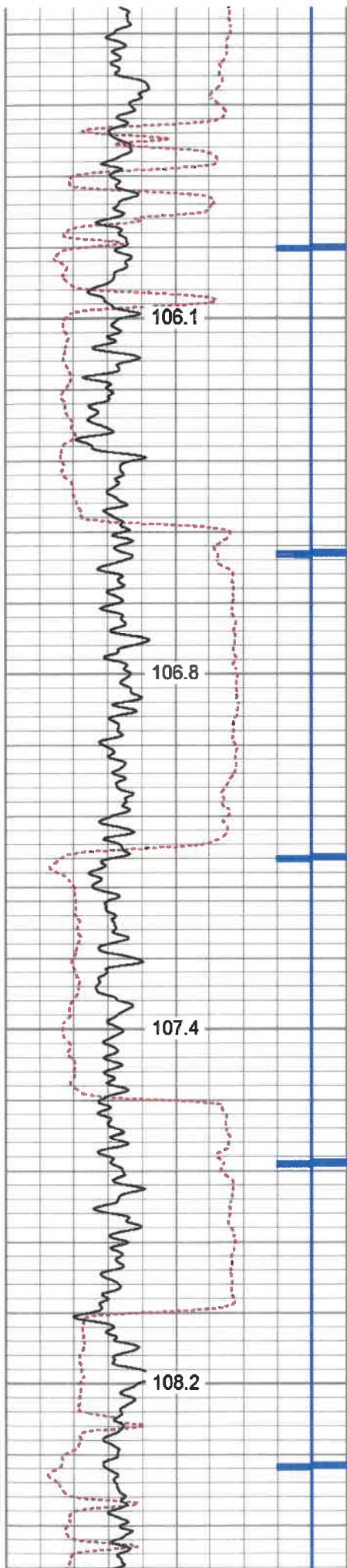
4600

4650

4700

4750



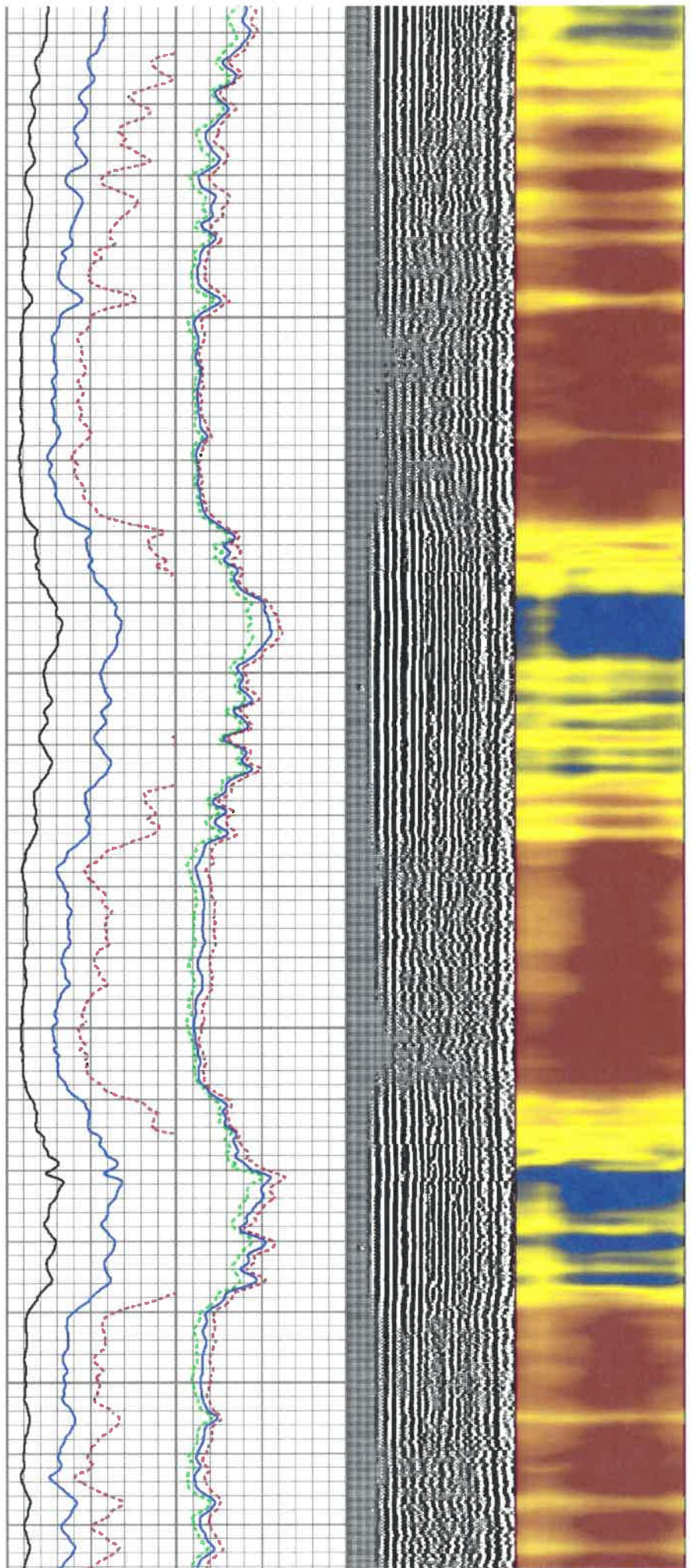


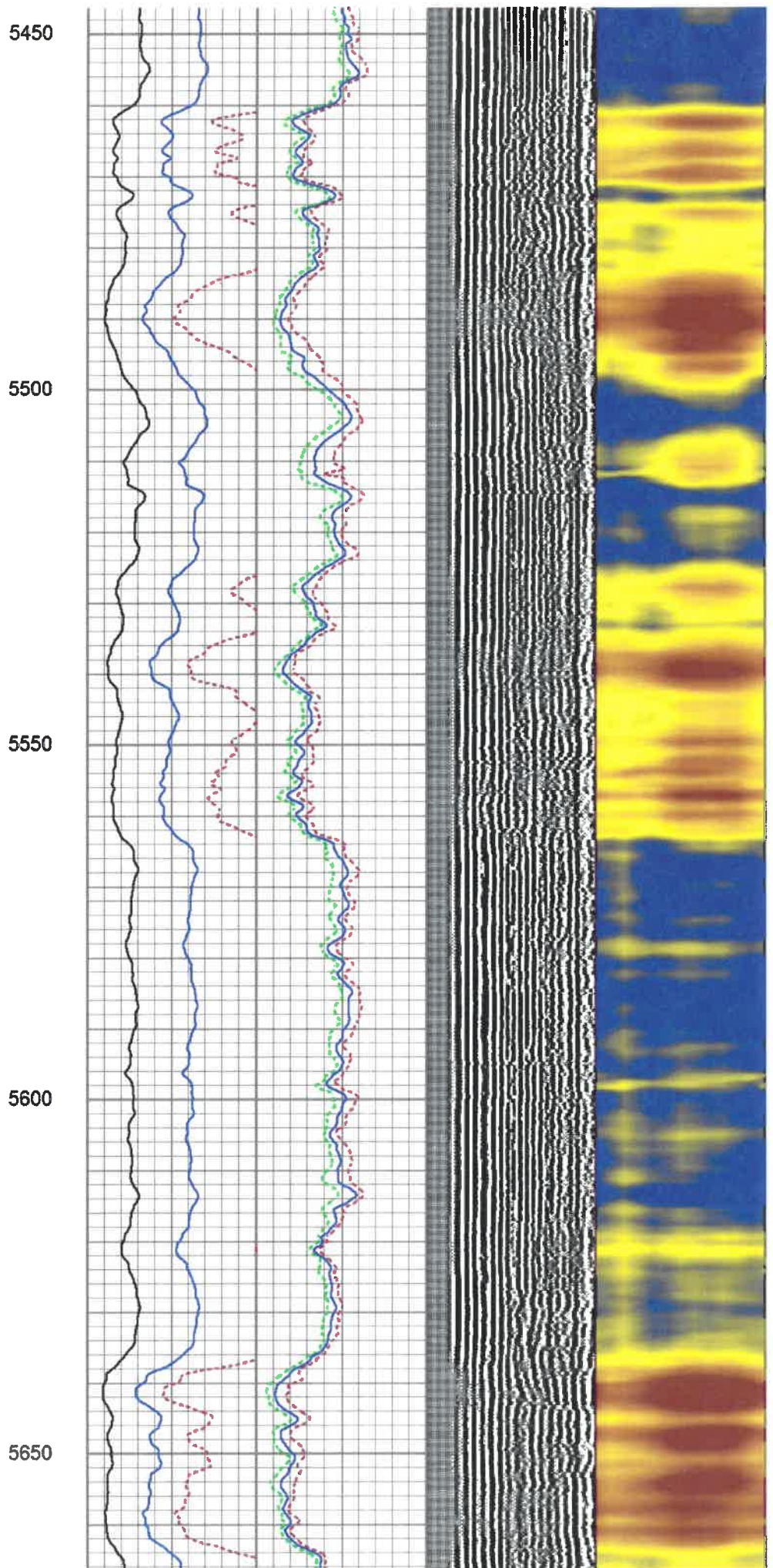
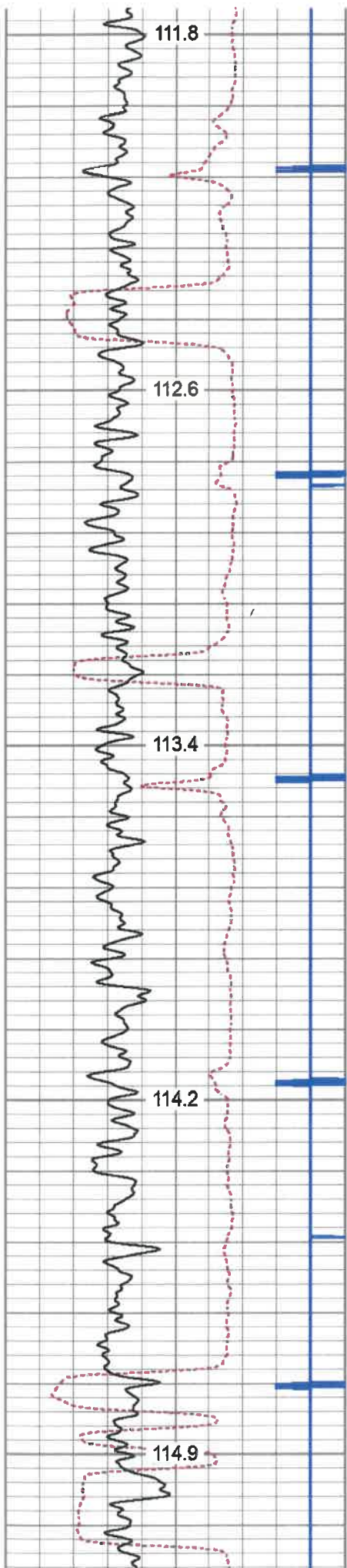
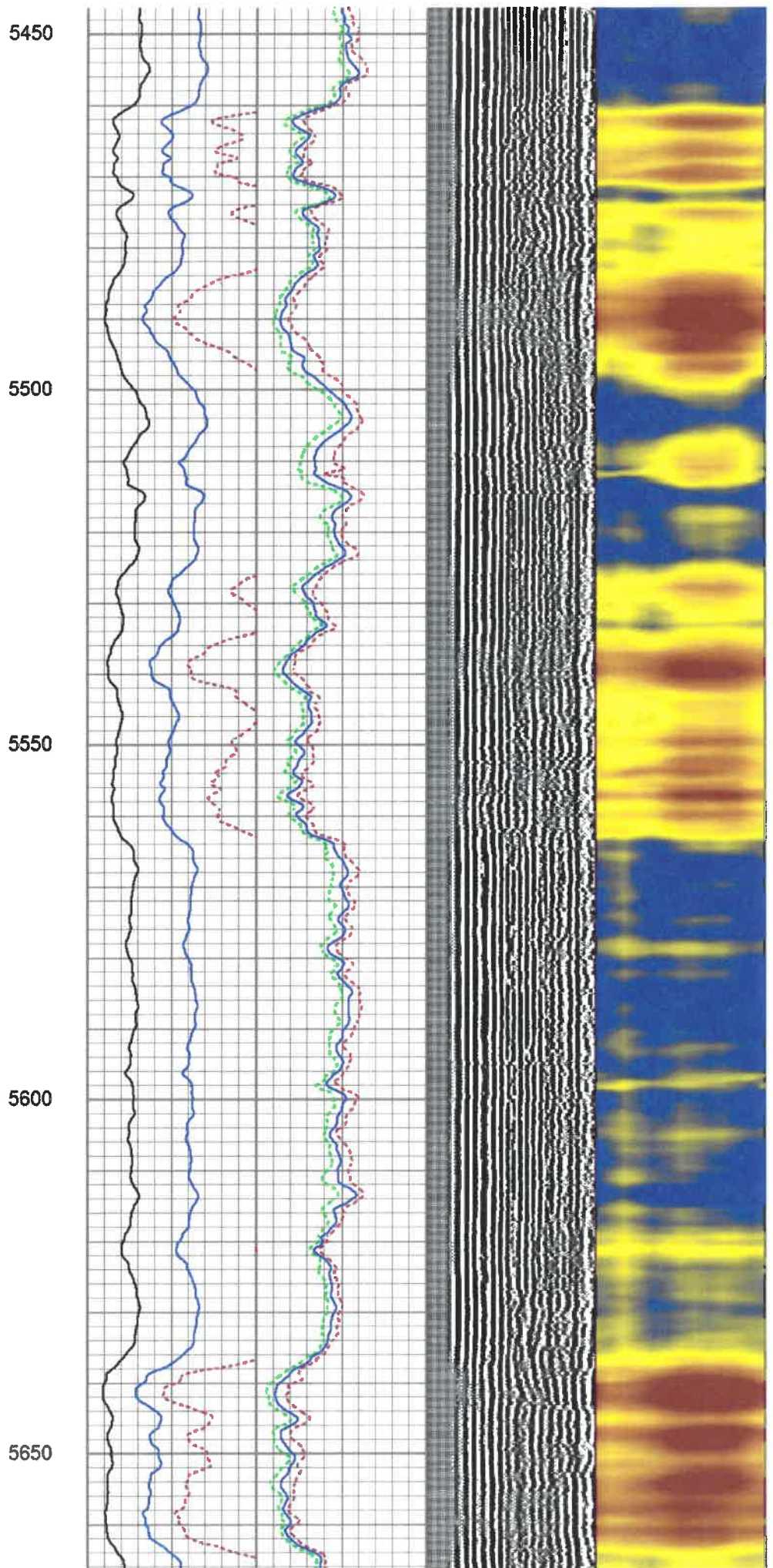
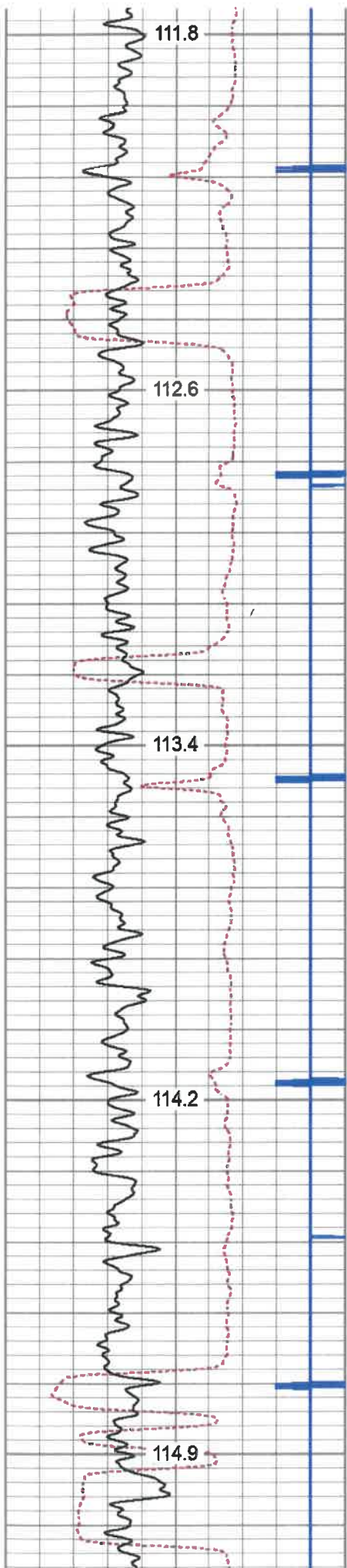
5050

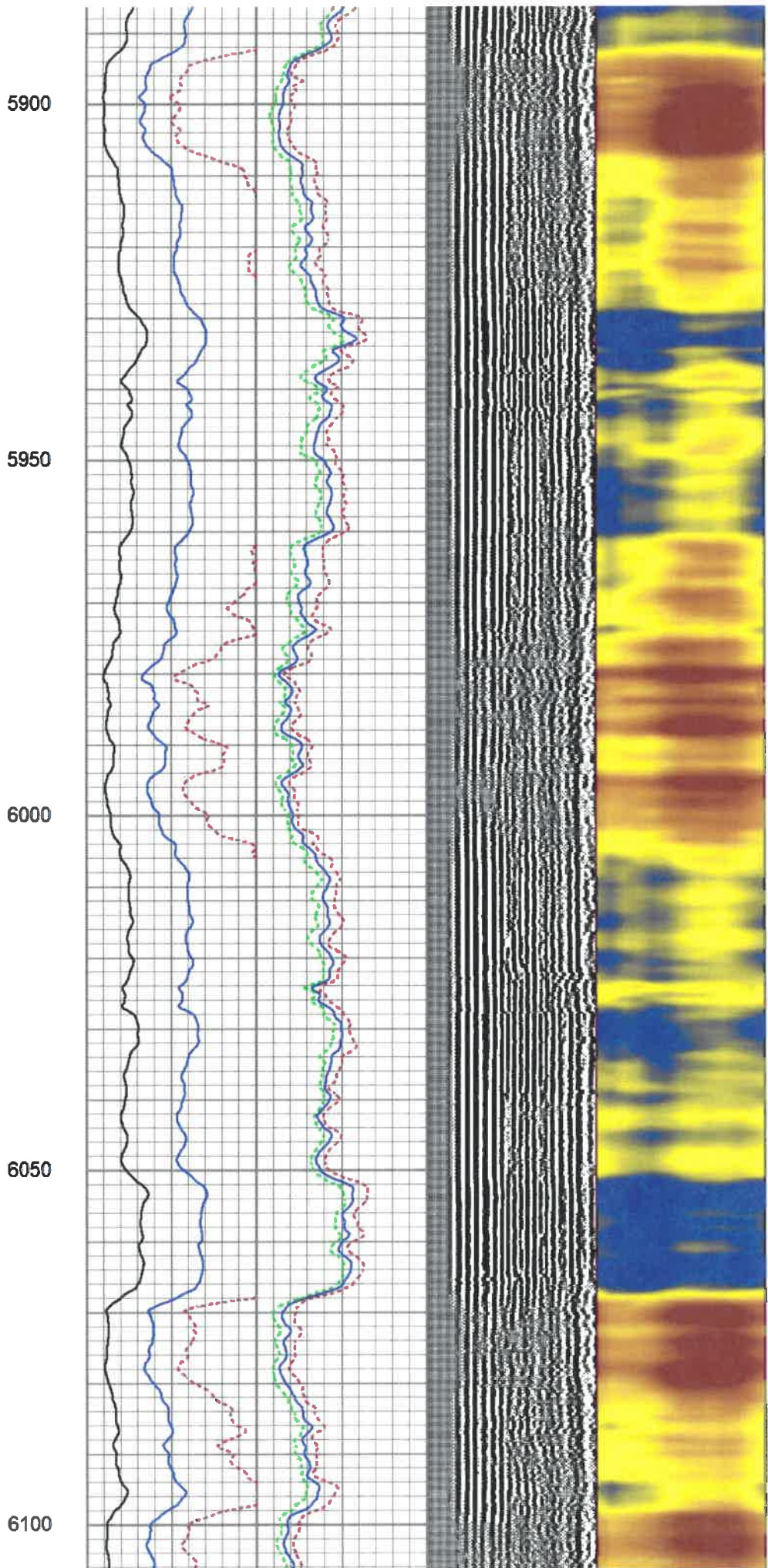
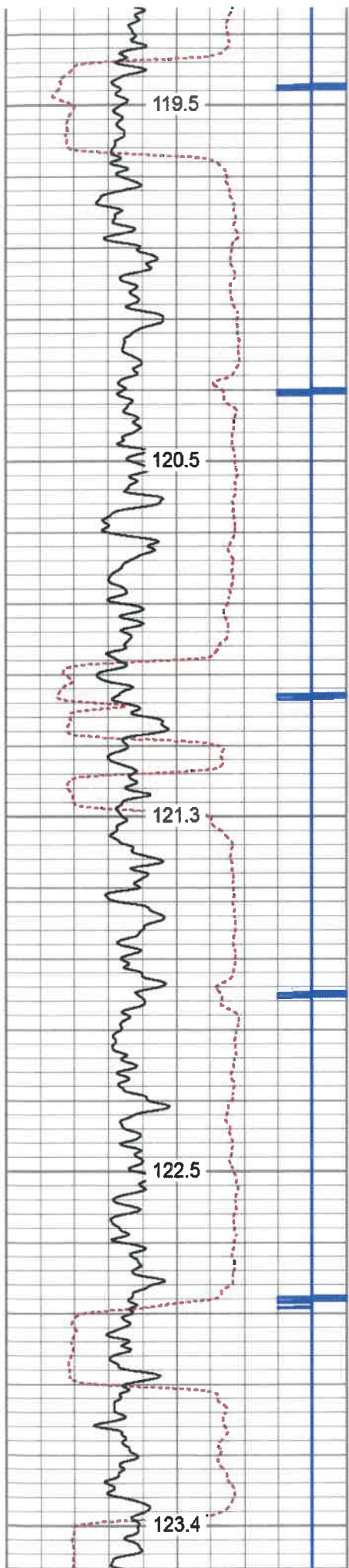
5100

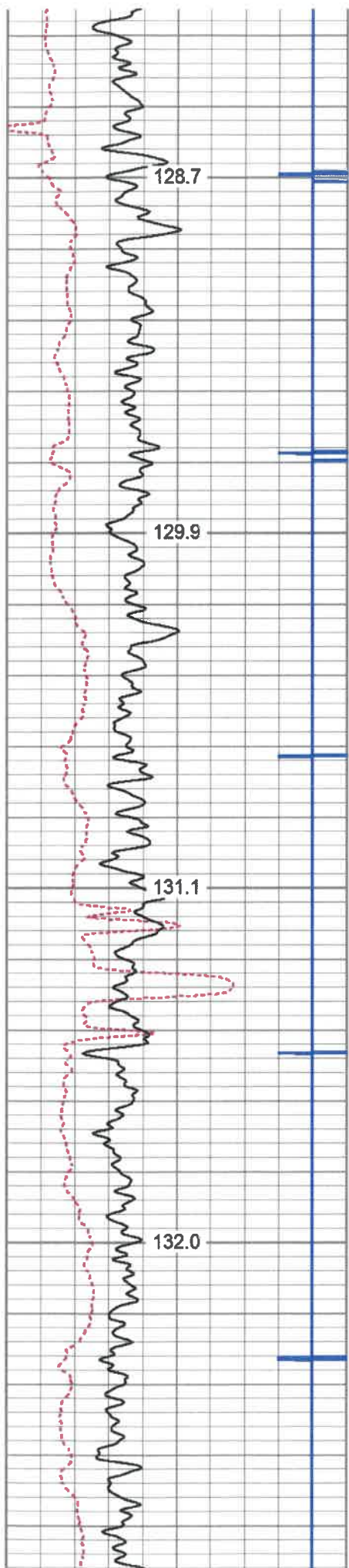
5150

5200







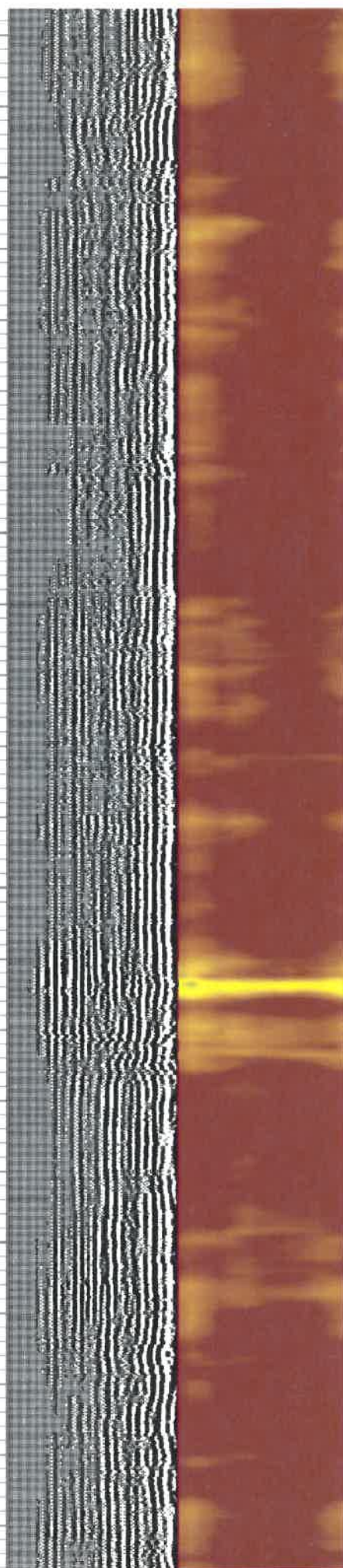
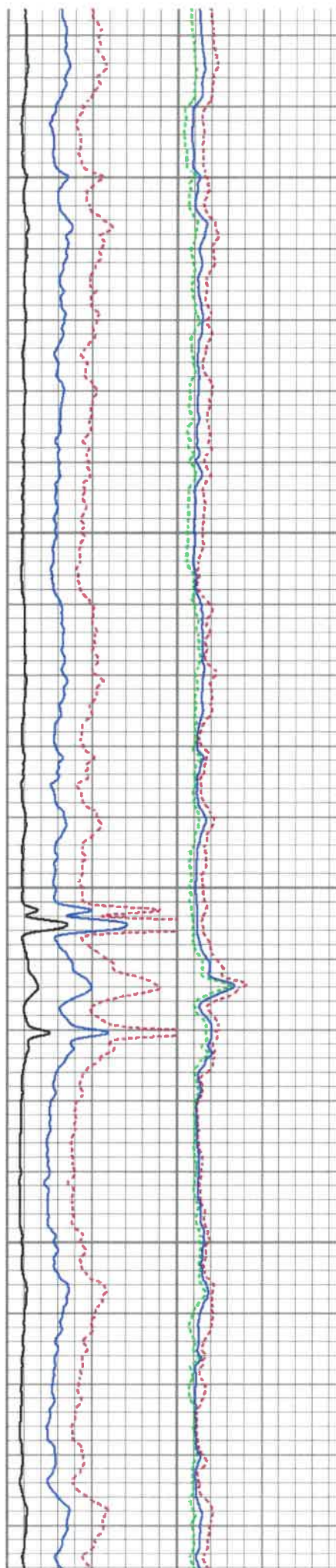


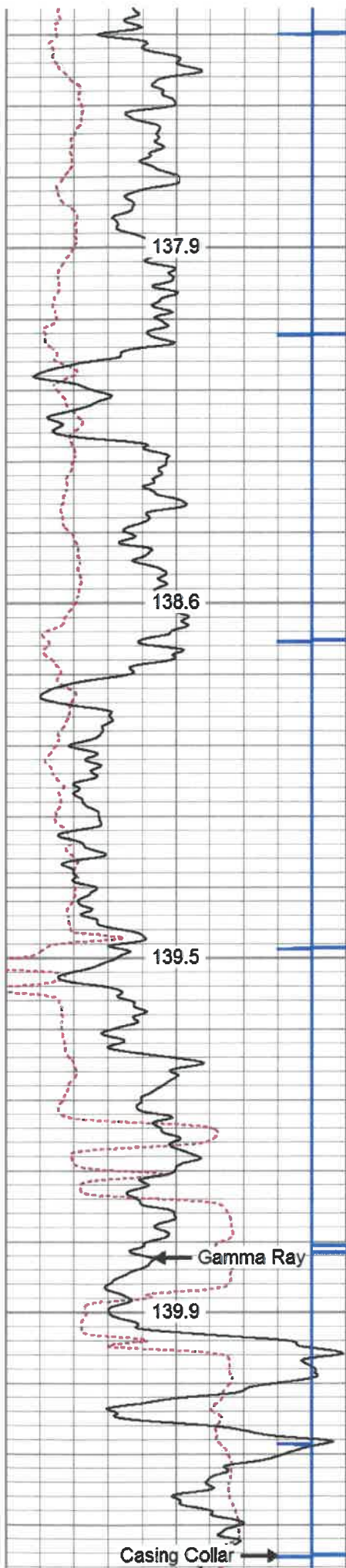
6350

6400

6450

6500



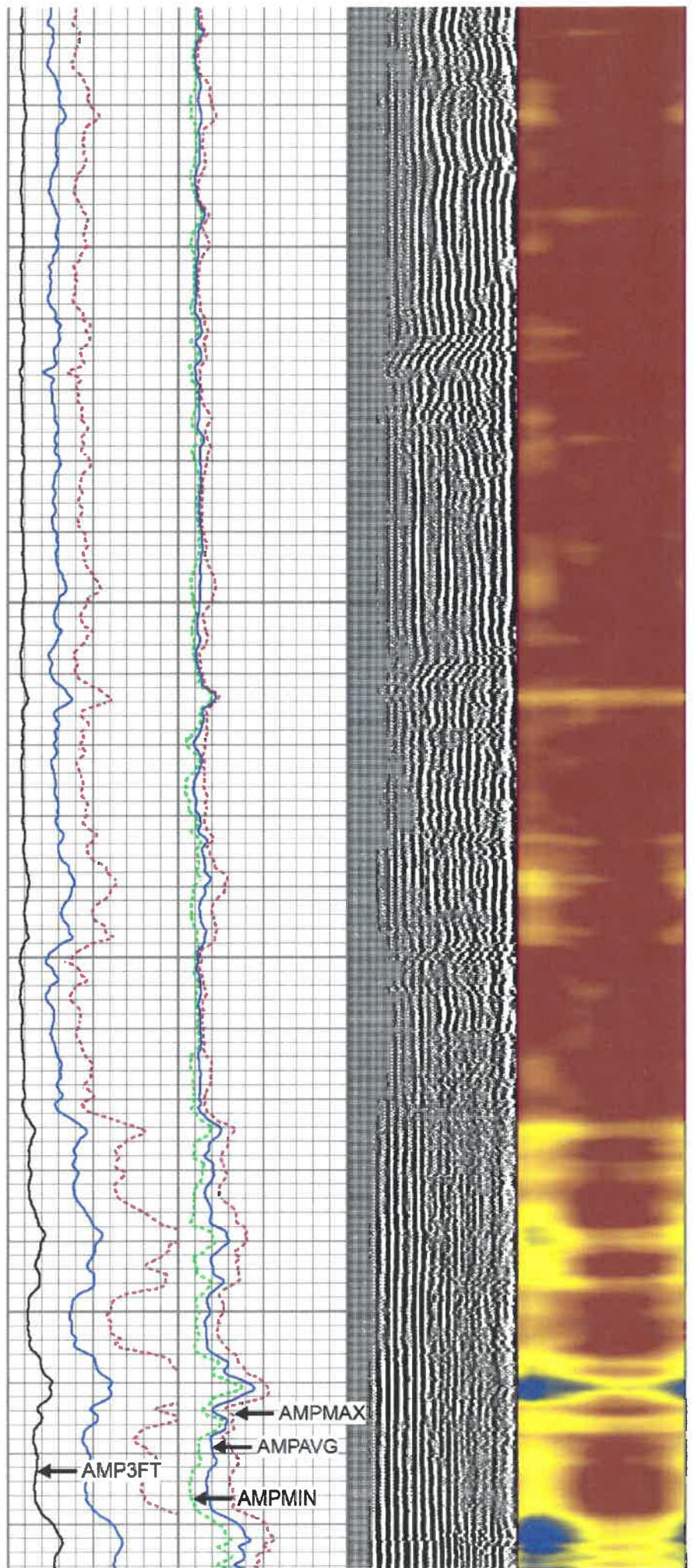


6800

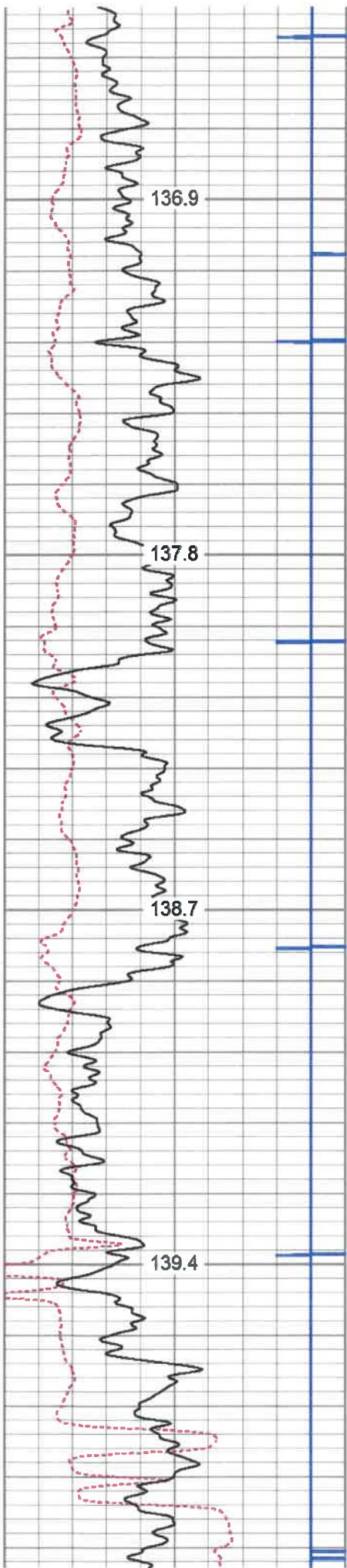
6850

6900

6950



AMP3FT
AMPMAX
AMPAVG
AMPMIN

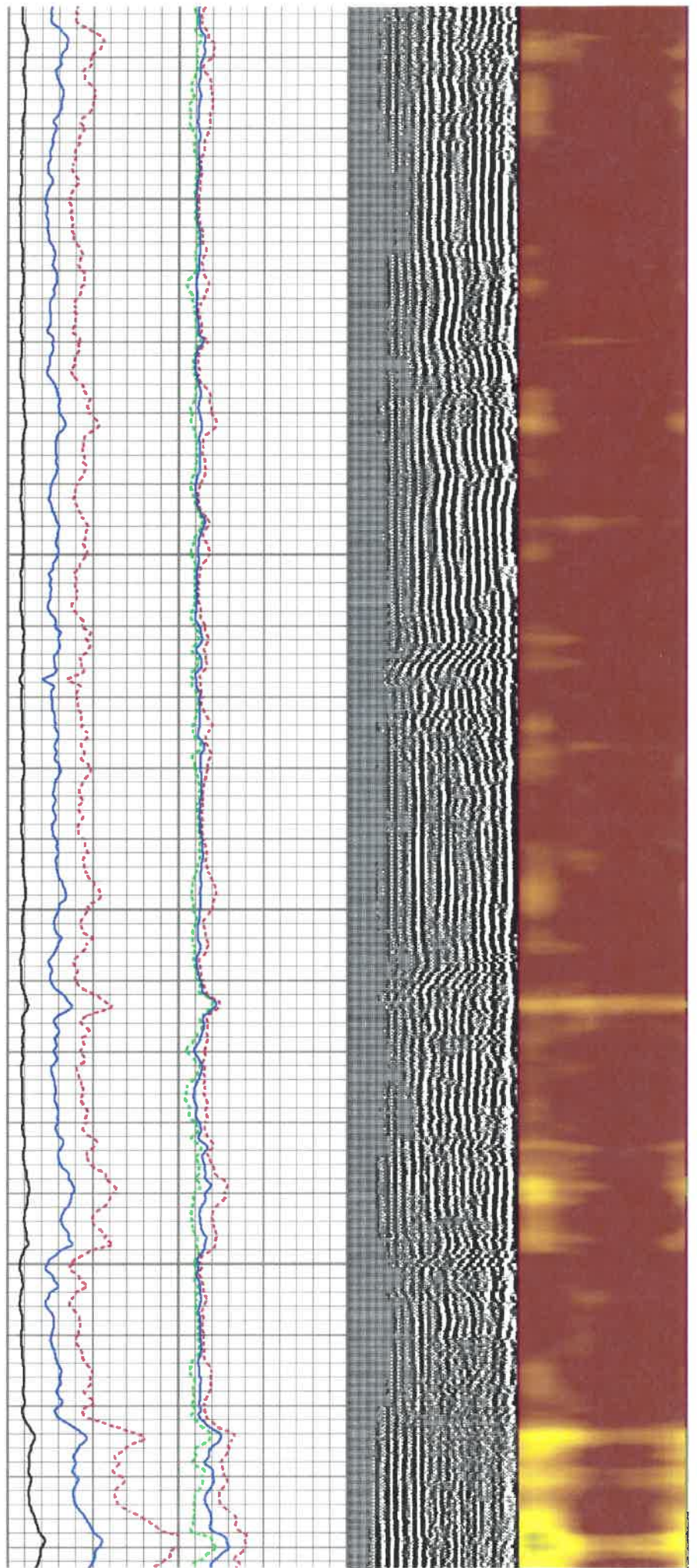


6750

6800

6850

6900



BHTEMP_Src : BHTEMP Input Source Selector
 BOREID : Borehole I.D.
 BOTTEMP : Bottom Hole Temperature
 CASEOD : Casing O.D.
 CASETHCK : Casing Thickness
 CASEWGHT : Casing Weight
 MAXAMPL : Maximum Amplitude

MINAMPL : Minimum Amplitude
 MINATTN : Minimum Attenuation
 PERFS : Perforation Flag
 PPT : Predicted Pipe Time
 SRFTEMP : Surface Temperature
 TDEPTH : Total Depth

Calibration Report

Database File e:\anterog.db
 Dataset Pathname pass6.3
 Dataset Creation Sun Sep 01 15:17:29 2019

Gamma Ray Calibration Report

Serial Number: 0111
 Tool Model: Tek-Co 2 3/4
 Performed: Fri Aug 02 20:12:43 2019
 Calibrator Value: 1.0 GAPI
 Background Reading: 0.0 cps
 Calibrator Reading: 1.0 cps
 Sensitivity: 0.3000 GAPI/cps

Segmented Cement Bond Log Calibration Report

Serial Number: T12_01
 Tool Model: Tek12
 Calibration Casing Diameter: 5.500 in
 Calibration Depth: 2997.175 ft

Master Calibration, performed (Derived):

	Raw (v)		Calibrated (mv)		Results	
	Zero	Cal	Zero	Cal	Gain	Offset
3'	0.000	0.535	3.500	71.921	107.948	3.496
CAL	0.000	0.451				
5'	-0.030	0.623	1.000	71.921	108.604	4.231
SUM						
S1	0.000	1.722	0.000	100.000	58.078	-0.008
S2	0.000	1.541	0.000	100.000	64.918	-0.007
S3	0.000	1.644	0.000	100.000	60.817	-0.007
S4	0.000	1.732	0.000	100.000	57.738	-0.007
S5	0.000	1.814	0.000	100.000	55.124	-0.008
S6	0.000	1.847	0.000	100.000	54.144	-0.008
S7	0.000	1.823	0.000	100.000	54.852	-0.008
S8	0.000	1.703	0.000	100.000	58.715	-0.007
S9	0.000	1.627	0.000	100.000	61.459	-0.007
S10	0.000	1.581	0.000	100.000	63.253	-0.007
S11	0.000	1.777	0.000	100.000	56.267	-0.007
S12	0.000	1.843	0.000	100.000	54.272	-0.008

Temperature Calibration Report

Serial Number: T12_01
 Tool Model: Tek12
 Performed: Fri Oct 22 17:21:06 2010

	Reference	Reading
Low Reference:	0.00 degF	0.00 usec
High Reference:	1.00 degF	1.00 usec

Dataset: anterog.db: field/well/run1/pass6.1
Total length: 21.37 ft
Total weight: 256.00 lb
O.D.: 3.25 in



Company ANTERO RESOURCES CORPORATION
Well OXFORD 97 GHS
Field MARCELLUS
County DODDRIDGE
State WV Country USA