



GEOSEARCH LOGGING INC.

Scale 1:240 (5"=100') Imperial
Measured Depth Log

Well Name: Windoes 2244H
 Location: Harrison County, WV
 License Number: 47-033-05406
 Spud Date: 12/18/2010
 Surface Coordinates: Lat: 39.1273167
 Long:-80.2332583
 Bottom Hole Coordinates: Lat: 39.132838
 Long: -80.2393861
 Ground Elevation (ft): 1,324' K.B. Elevation (ft): 1,340'
 Logged Interval (ft): 2,669' To: 10,437' Total Depth (ft): 10,437'
 Formation: Marcellus
 Type of Drilling Fluid: Air Drilling, Oil Based Mud

Region: Appalachia
Drilling Completed: 1/3/2011

Printed by MUD.LOG from WellSight Systems 1-800-447-1534 www.WellSight.com

OPERATOR

Company: XTO Energy
 Address: 600 E. Exchange Ave.
 Fort Worth, TX 76164



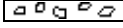

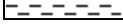


GEOLOGIST






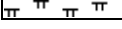

Name: Kelley Hartley, Daniel Blake, & Randy Shuman,
 Company: Geosearch Logging, Inc.
 Address: P.O. Box 6005
 Edmond, OK 73083-6005
 (405) 340-5545

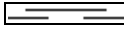
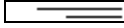
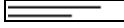


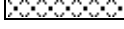

Comments







2 Manned Logging Service
 Start Logging Date: 12/24/2010
 OBM date: 12/29/2010
 Released Logging Date: 1/3/2011
 Drilling Contractor: UDI #209
 PC193,ML126,HASP V-42, H-33

ROCK TYPES

 Anhy
 Bent
 Brec
 Cht
 Clyst
 Coal
 Congl

 Dol
 Gyp
 Igne
 Lmst
 Meta
 Mrlst
 Salt

 Shale
 Shcol
 Shgy
 Sltst
 Ss
 Till
 Sandstn

 Siltstn
 Granwash
 Dolowash
 Cement
 Granite
 Hotshale

ACCESSORIES

MINERAL

- Anhy
- Arggrn
- Arg
- Bent
- Bit
- Breclrag
- Calc
- Carb
- Chtdk
- Chtit
- Dol
- Feldspar
- Ferrpel
- Ferr
- Glau
- Gyp
- Hvymin
- Kaol
- Marl

- Minxl
- Nodule
- Phos
- Pyr
- Salt
- Sandy
- Silt
- Sil
- Sulphur
- Tuff

FOSSIL

- Algae
- Amph
- Belm
- Bioclst
- Brach
- Bryozoa
- Cephal
- Coral

- Crin
- Echin
- Fish
- Foram
- Fossil
- Gastro
- Oolite
- Ostra
- Pelec
- Pellet
- Pisolite
- Plant
- Strom

STRINGER

- Anhy
- Arg
- Bent
- Coal
- Dol

- Gyp
- Ls
- Mrst
- Sltstrg
- Ssstrg

TEXTURE

- Boundst
- Chalky
- Cryxln
- Earthy
- Finexln
- Grainst
- Lithogr
- Microxln
- Mudst
- Packst
- Wackest

OTHER SYMBOLS

POROSITY TYPE

- Earthy
- Fenest
- Fracture
- Inter
- Moldic
- Organic
- Pinpoint
- Vuggy

SORTING

- Well
- Moderate
- Poor

ROUNDING

- Rounded
- Subrnd
- Subang
- Angular

OIL SHOWS

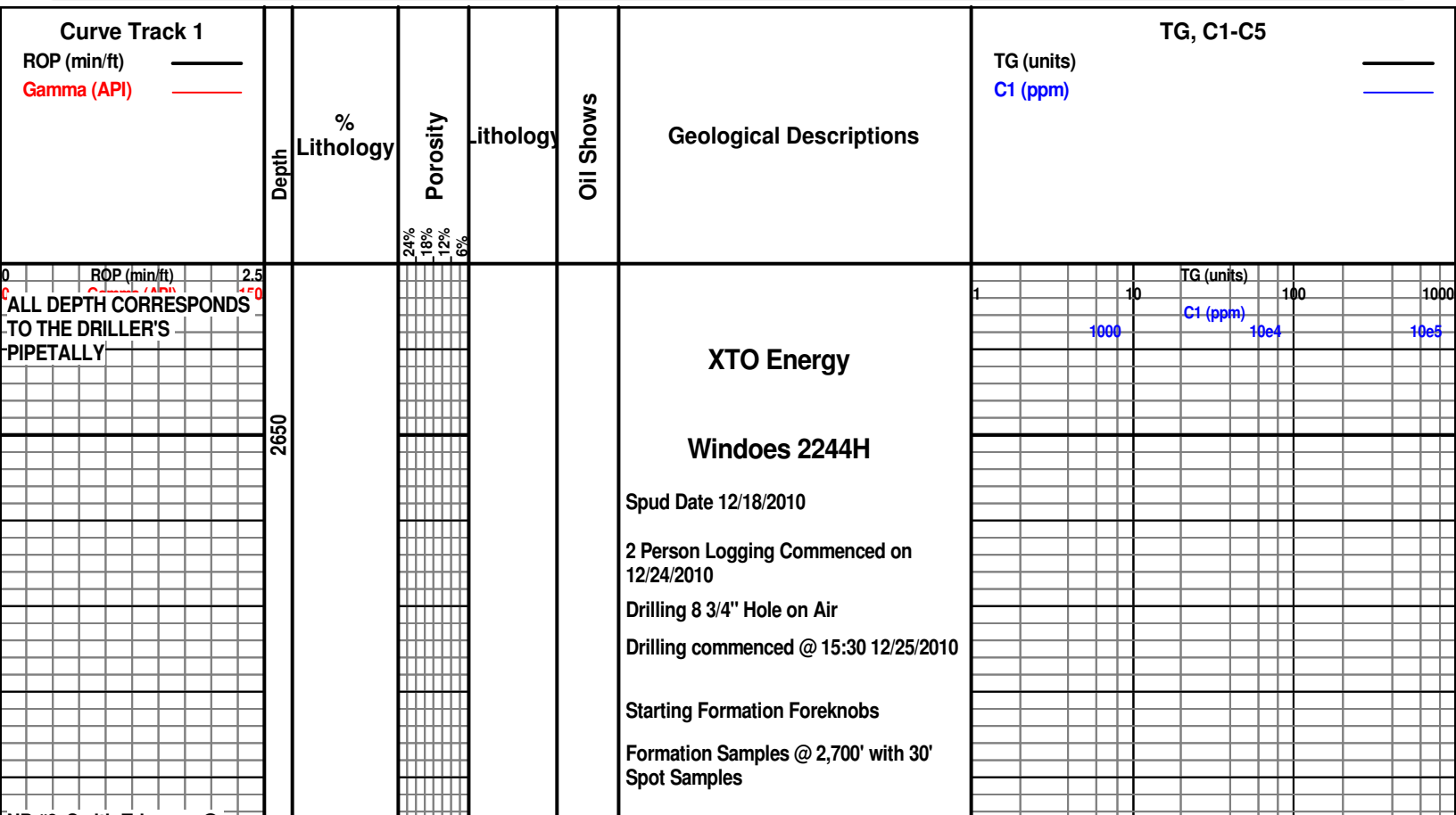
- Even
- Spotted
- Ques
- Dead
- Poor
- Fair
- Good
- Excelent
- Csgshoe

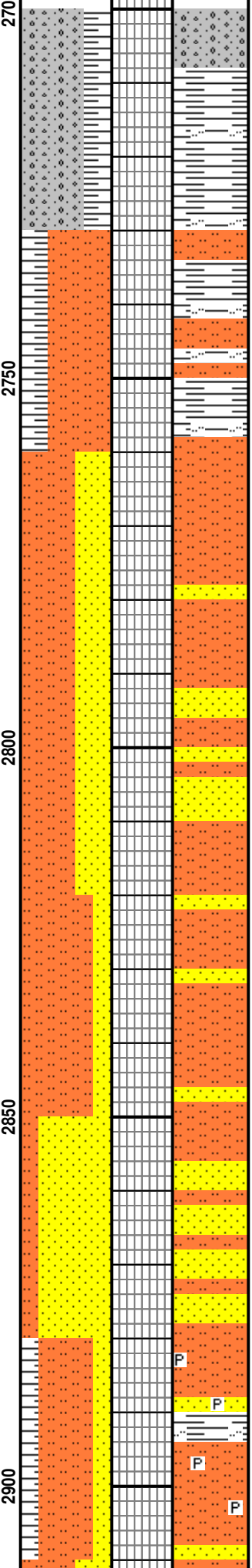
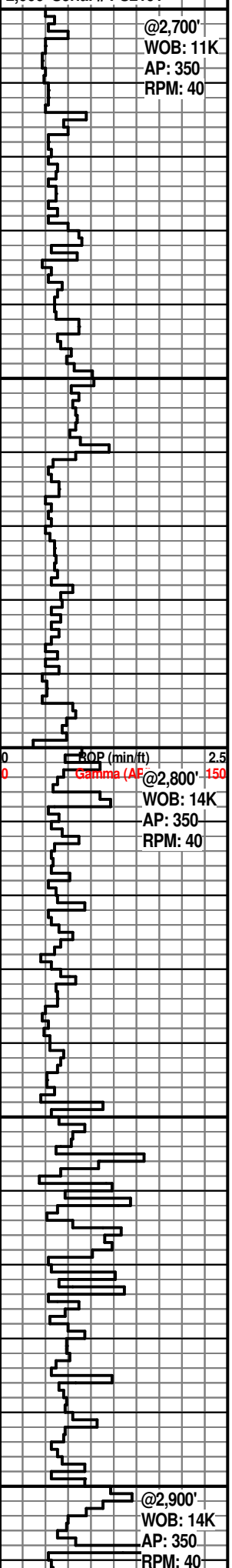
INTERVALS

- Core
- Dst

EVENTS

- Rft
- Sidewall





SH: m gy- gy grn, sl hd- hd, blk- plty, n calc, slty ip grdng to sltst, micmica ip

SH: m gy- gy grn, sl hd- hd, blk- plty, n calc, slty ip grdng to sltst, micmica ip; SLTST: lt- m gy, sl hd- hd, blk, n calc, micmica

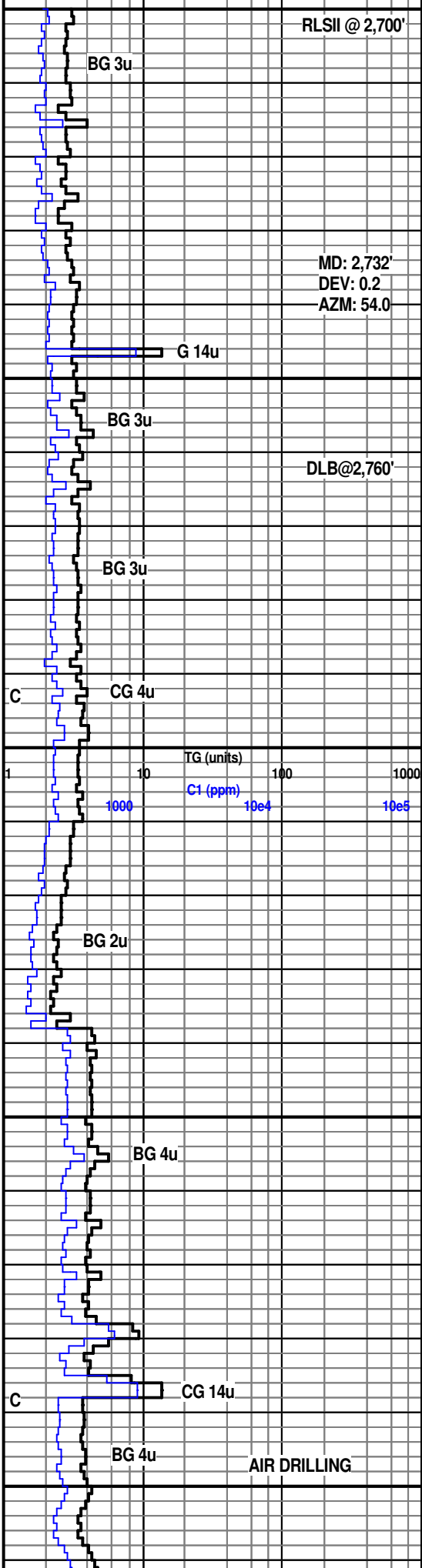
SLTST: lt- m gy, sl hd- hd, blk, n calc, micmica; SS: lt gy, slt- vf gr, sbang-sbrnd, m srted, n calc, micmica ip

SLTST: lt- m gy, sl hd- hd, blk, n calc, micmica; SS: lt gy, slt- vf gr, sbang-sbrnd, m srted, n calc, micmica ip

SLTST: lt- m gy, sl hd- hd, blk, n calc, micmica; SS: lt gy, slt- vf gr, sbang-sbrnd, m srted, n calc, micmica ip

SS: lt gy- lt rd brn, vf- f gr, sbrnd-sbang, med srted, n calc, micmica, frm, tt; SLTST: lt- m gy- gy grn, blk, n calc, micmica ip

SH: m gy- gy grn, frm, blk, slty grdng to SLTST: m gy- gy grn, blk, n calc, tr fd pyr, micmica ip; SS: lt gy- tan, slt- vf gr, sbang-sbrnd, m srted, n calc, micmica ip



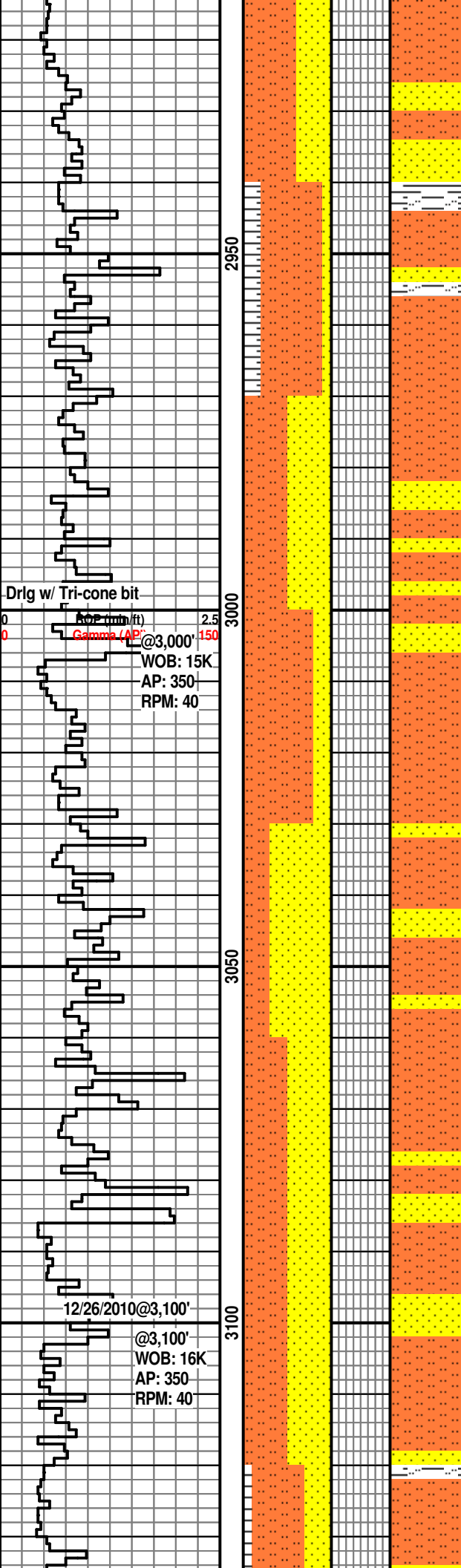
RLSII @ 2,700'

MD: 2,732'
DEV: 0.2
AZM: 54.0

DLB@2,760'

TG (units) 1 10 100 1000
C1 (ppm) 1000 10e4 10e5

AIR DRILLING



SLTST: lt gy- gy grn, sl hd- hd, blk, n calc, micmica ip; SS: lt gy, slt- vf gr, sbrnd- sbang, med srt, n calc, micmica, frm, tt

MD: 2,921'
DEV: 0.1
AZM: 133.9

SLTST: lt gy- gy grn, sl hd- hd, blk, n calc, micmica ip; SH: m gy- gy grn, frm, blk, slty; SS: lt gy, slt- vf gr, sbrnd- sbang, med srt, n calc, micmica, frm, tt

SLTST: lt gy- gy grn, occ m rd brn, sl hd- hd, blk, n calc, micmica ip; SS: lt gy- gy grn, occ m rd brn, slt- vf gr, sbrnd- sbang, med srt, n calc, micmica, frm, tt

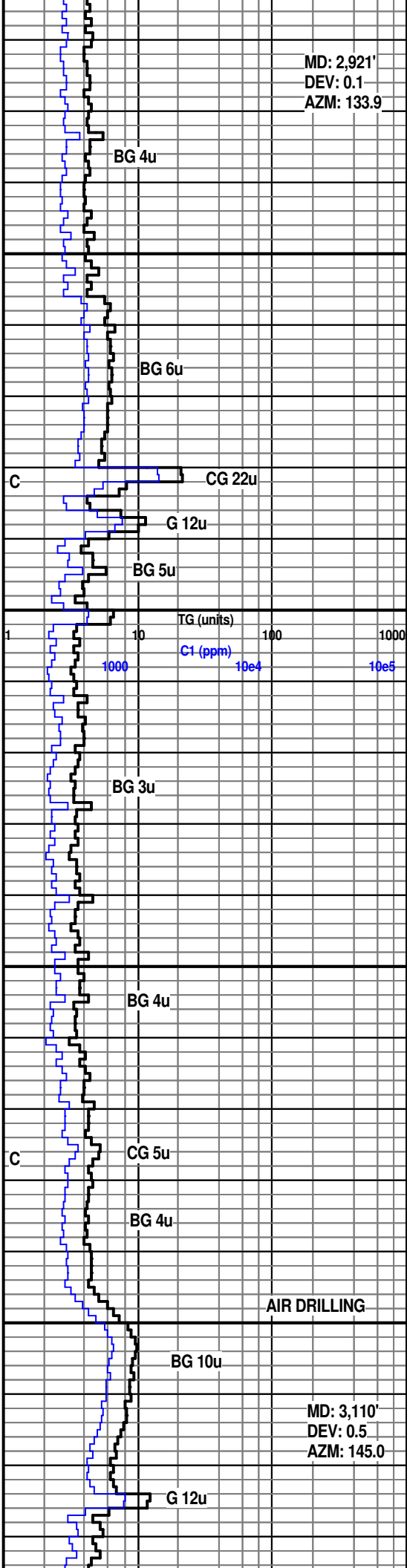
SLTST: lt gy- gy grn, occ m gy brn, sl hd- hd, blk, n calc, micmica ip; SS: lt gy- gy grn, occ m gy brn, slt- vf gr, sbrnd- sbang, med srt, n calc, micmica, frm, tt

SS: lt gy, vf gr grng to sltst, sbrnd- sbang, med srt, sl- m calc, micmica, tr LS, frm, tt; SLTST: lt gy, sl hd- hd, blk, sl calc, micmica ip

SS: lt gy, vf gr grng to sltst, sbrnd- sbang, med srt, sl calc, micmica, frm, tt; SLTST: lt gy, sl hd- hd, blk, sl calc, micmica ip

SS: lt gy, vf gr grng to sltst, sbrnd- sbang, med srt, sl calc, micmica, frm, tt; SLTST: lt gy, sl hd- hd, blk, sl calc, micmica ip

SLTST: lt gy, sl hd- hd, blk, sl calc, micmica ip; SS: lt gy, slt- vf gr, sbrnd-



BG 4u

BG 6u

C CG 22u

G 12u

BG 5u

TG (units) 1000 100 10000
C1 (ppm) 10e4 10e5

BG 3u

BG 4u

C CG 5u

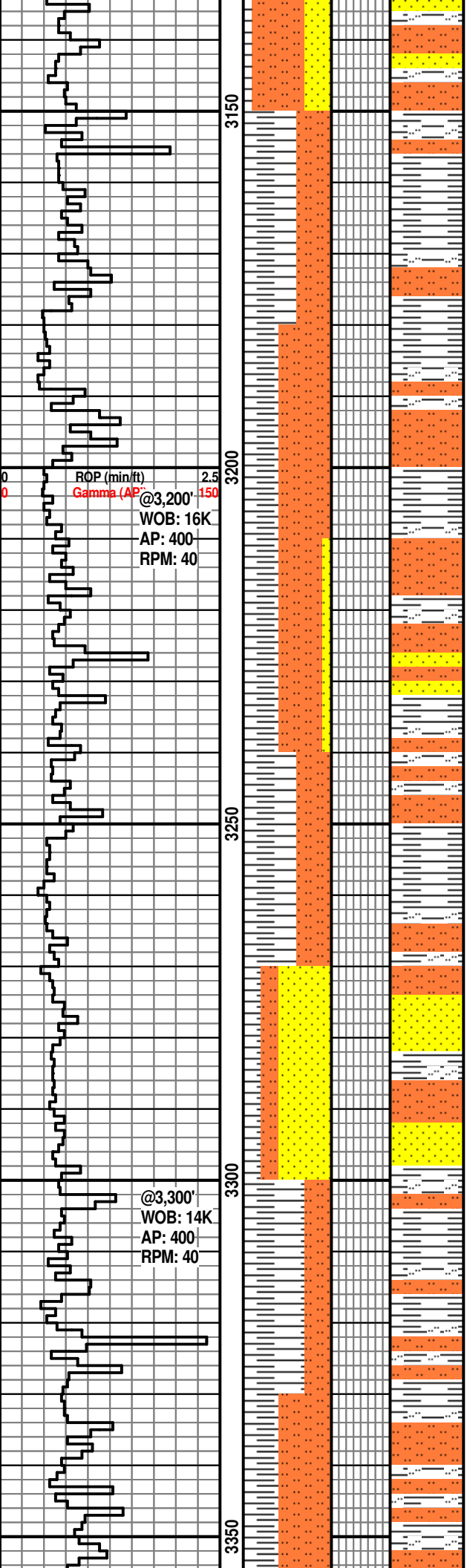
BG 4u

AIR DRILLING

BG 10u

MD: 3,110'
DEV: 0.5
AZM: 145.0

G 12u



sband, med srtd, sl calc, micmica, frm, tt; SH: lt gy, frm- sl hd, blk, slty grndg to sltst

SH: lt gy, frm, blk- plty, n calc, slty, micmica ip; SLTST: lt gy, sl hd, blk, n calc, micmica ip

SH: lt gy, frm, blk- plty, n calc, slty, micmica ip; SLTST: lt gy, sl hd, blk, n calc, micmica ip

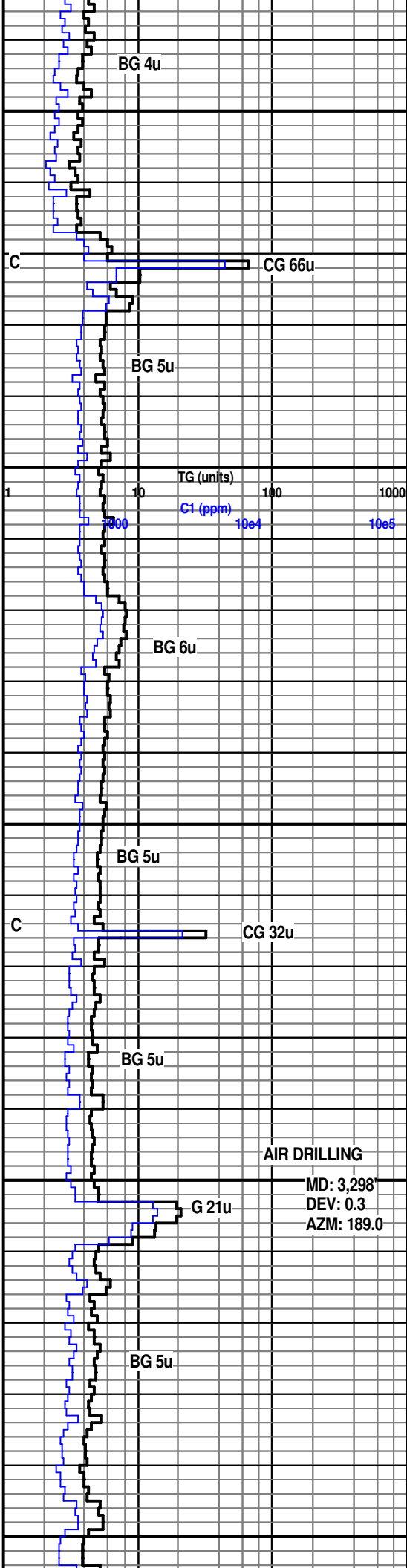
SH: lt gy, frm, blk- plty, n calc, slty, micmica ip; SLTST: lt gy, sl hd, blk, n calc, micmica ip, grndg to vf SS ip

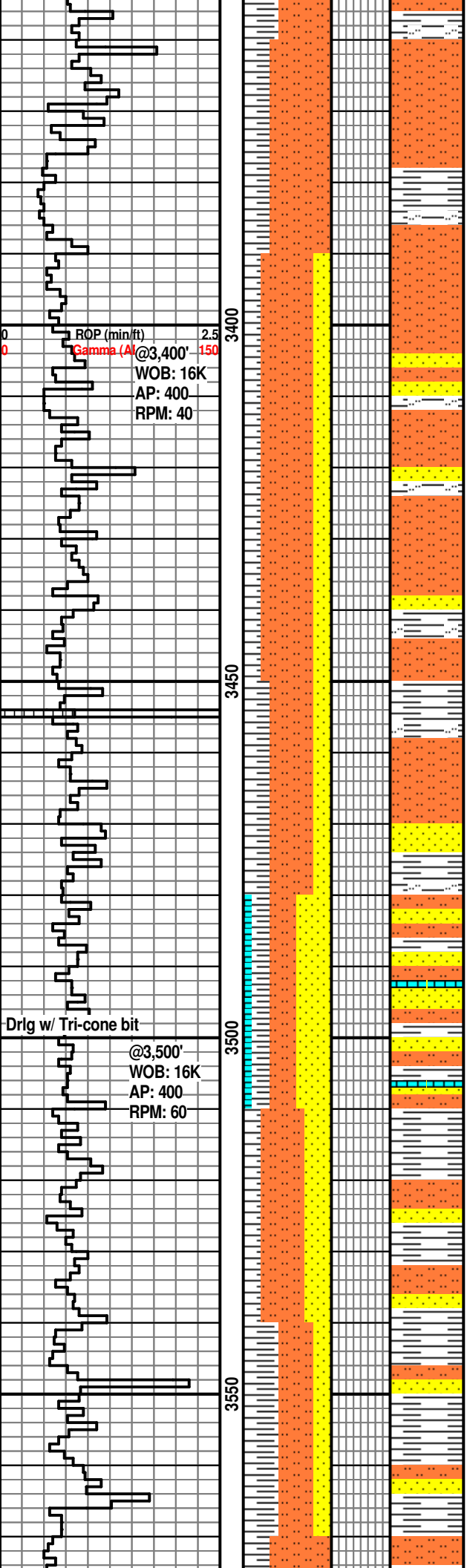
SH: lt gy, frm, blk- plty, n calc, slty, micmica ip; SLTST: lt gy, sl hd, blk, n calc, micmica ip

SS: lt gy, slt- vf gr, sbrnd- sband, med srtd, n calc, micmica, frm, tt; SLTST: lt gy- gy grn, sl hd-hd, blk, n calc, micmica; SH: lt gy- gy grn, frm, blk- plty, slty, micmica ip

SH: lt gy, frm, blk, sl calc, slty grndg to sltst ip, micmica ip; SLTST: pred m-dk gy brn, lt gy ip, sl hd- hd, blk, sl- m calc, micmica, tr LS

SH: lt gy, frm, blk, sl calc, slty grndg to sltst ip, micmica ip; SLTST: pred lt gy, m-dk gy brn ip, sl hd- hd, blk, sl calc, micmica





SLTST: pred lt gy- gy grn, occ m- dk gy brn, sl hd- hd, blk, sl calc ip, micmica ip; SH: pred lt gy- gy grn, occ m dk gy brn, blk, sl calc, slty grng to sltst, micmica ip

SLTST: pred lt gy- gy grn, occ m- dk gy brn, sl hd- hd, blk, sl calc ip, micmica ip, grng to SS: lt gy, slt- vf gr, sbrnd- sbang, med srtd, sl calc, micmica, frm, tt; ; SH: pred lt gy- gy grn, occ m dk gy brn, blk, sl calc, slty grng to sltst, micmica ip

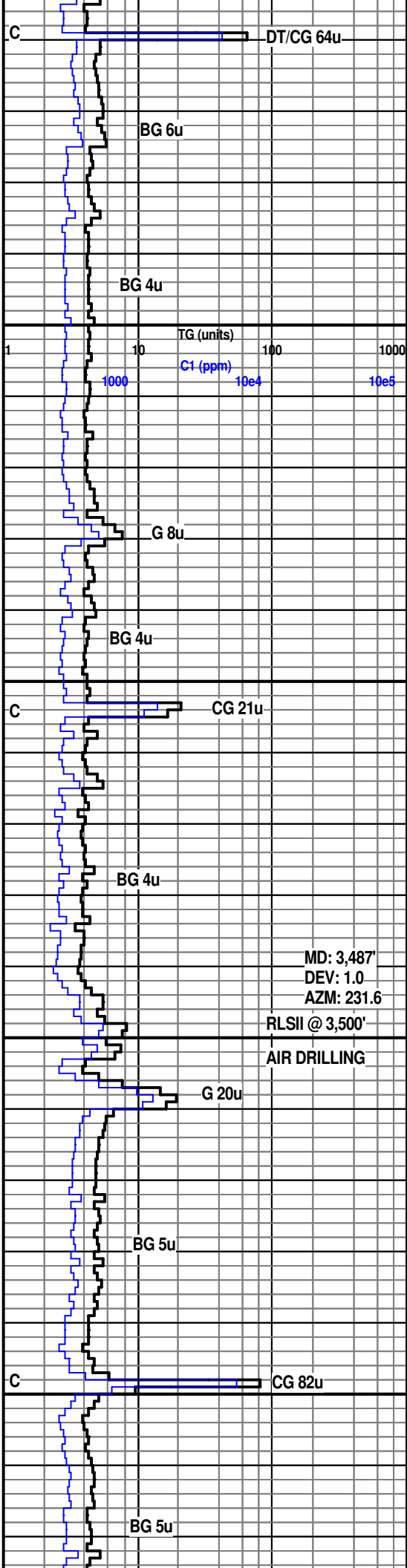
SLTST: lt gy, m-dk gy brn ip, sl hd, blk, sl calc, micmica ip; SS: lt gy, slt- vf gr, sbrnd- sbang, med srtd, sl calc, frm; SH: lt gy- gy grn, occ m dk gy brn, blk, slty, micmica ip

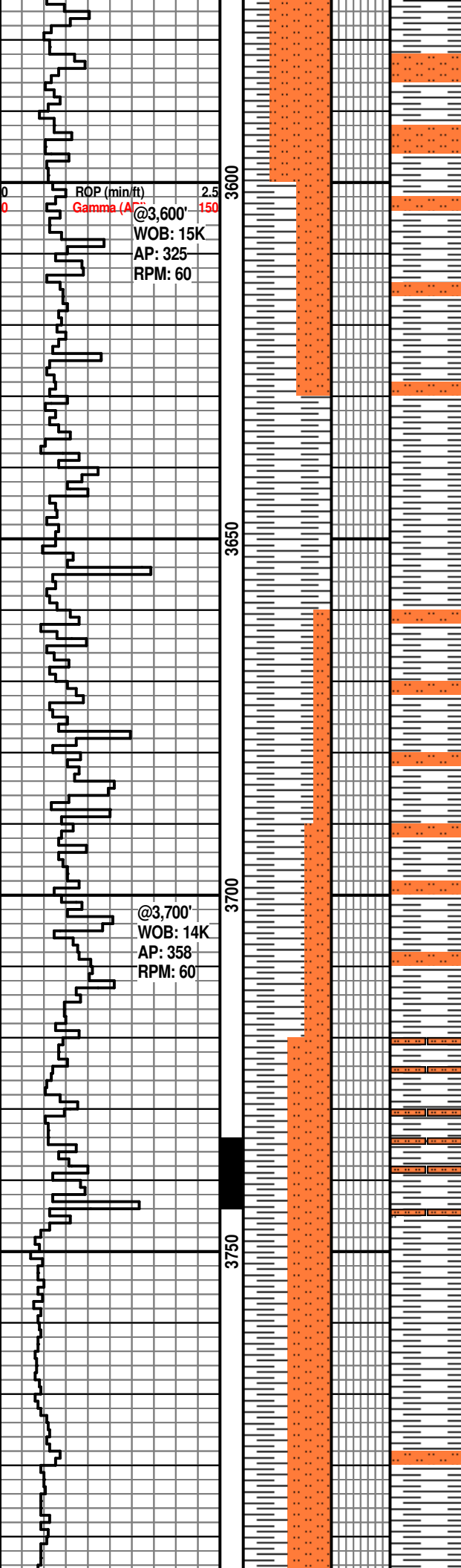
SLTST: lt gy, m-dk gy brn ip, sl hd, blk, sl calc, micmica ip; SS: lt gy, slt- vf gr, sbrnd- sbang, med srtd, sl calc, frm; SH: lt gy- gy grn, occ m dk gy brn, blk, slty, micmica ip

SS: lt gy, slt- vf gr, sbrnd- sbang, med srtd, m- v calc, frm; SLTST: lt gy, m-dk gy brn ip, sl hd, blk, sl calc, micmica ip; SH: m gy- gy brn, frm, blk, sl calc; LS: tan- lt gy, mic xln- cryp xln, tr foss frag, w/ sme sec calc dev

SS: lt gy, slt- vf gr, sbrnd- sbang, med srtd, m- v calc, frm; SLTST: lt gy, m-dk gy brn ip, sl hd, sl calc, micmica ip; SH: m gy- gy brn, frm, blk, sl calc

SLTST: lt-med gy, dk gy ip, frm-sl hd, calc cmt ip, sil cmt ip, sl calc ip, sme n calc, micmica, tr f dissemin pyr; SH: lt-dk gy, fri- frm, blk-amorph, sl calc ip, mstly n calc, v sli carb ip, v slty





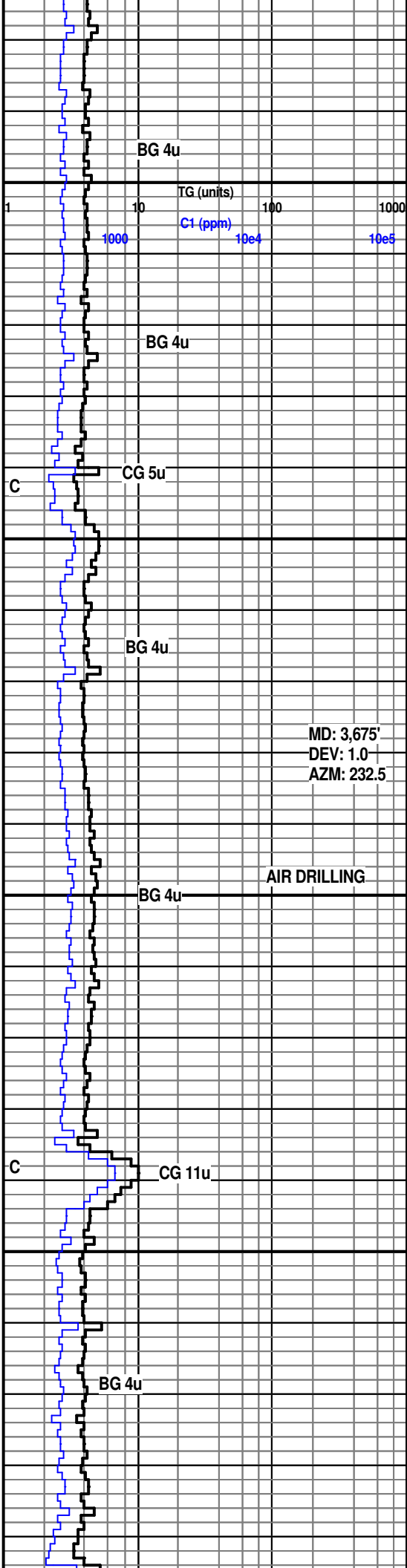
SLTST: lt-med gy, dk gy ip, frm-sl hd, calc cmt ip, sil cmt ip, sl calc ip, sme n calc, micmica, tr f dissem pyr; SH: lt-dk gy, fri- frm, blk- amorph, sl calc ip, mstly n calc, v sli carb ip, v slty

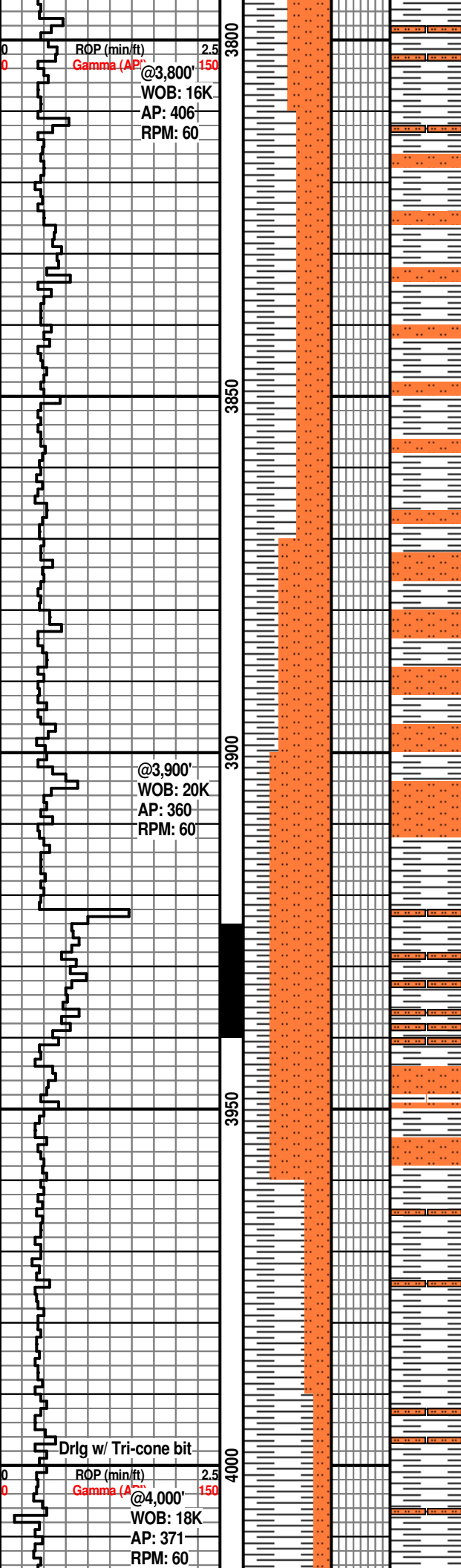
SH: lt-dk gy, fri- frm, blk- amorph, sl calc ip, mstly n calc, v sli carb ip, v slty

SH: lt-dk gy, fri- frm, blk- amorph, sl calc ip, mstly n calc, v sli carb ip, v slty;
SLTST: lt-med gy, dk gy ip, frm-sl hd, calc cmt ip, sil cmt ip, sl calc ip, sme n calc, micmica, tr f dissem pyr

SLTST: lt-med gy, dk gy ip, frm-sl hd, calc cmt ip, sil cmt ip, sl calc ip, sme n calc, micmica, tr f dissem pyr; SH: lt-dk gy, fri- frm, blk- amorph, sl calc ip, mstly n calc, v sli carb ip, v slty

SLTST: lt-med gy, dk gy ip, frm-sl hd, calc cmt ip, sil cmt ip, sl calc ip, sme n calc, micmica, tr f dissem pyr; SH: lt-dk gy, fri- frm, blk- amorph, sl calc ip, mstly n calc, v sli carb ip, v slty





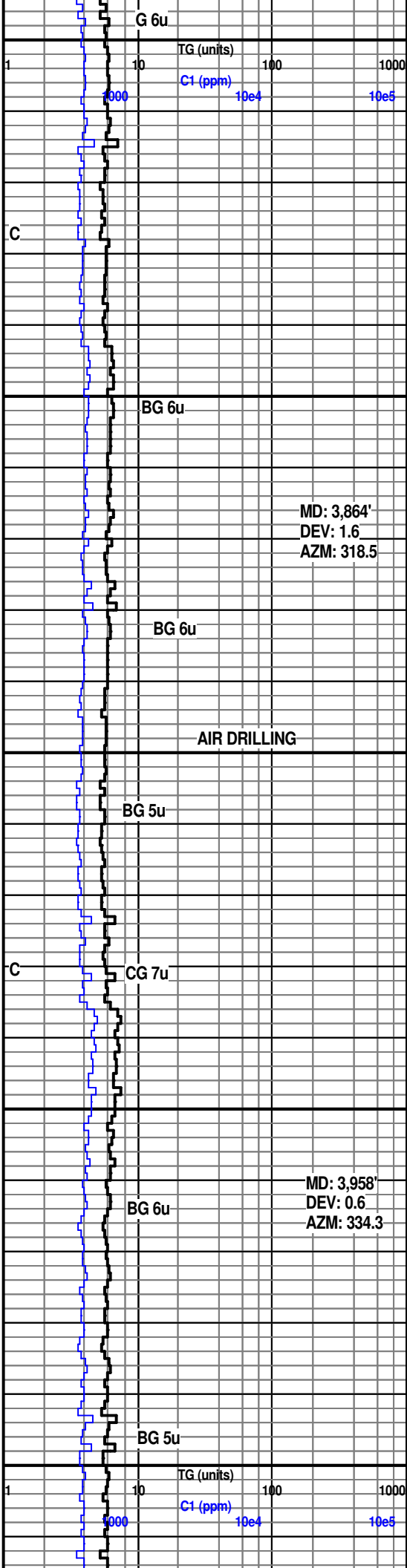
SH: lt-dk gy, fri-frm, blk-ymorph, sl calc ip, mstly n calc, v sli carb ip, v slty;
SLTST: lt-med gy, dk gy ip, frm-sl hd, calc cmt ip, sil cmt ip, sl calc ip, sme n calc, micmica, tr f dissem pyr

SLTST: lt-med gy, dk gy ip, frm-sl hd, calc cmt ip, sil cmt ip, sl calc ip, sme n calc, micmica, tr f dissem pyr; SH: lt-dk gy, fri-frm, blk-ymorph, sl calc ip, mstly n calc, v sli carb ip, v slty

SLTST: lt-med gy, dk gy ip, frm-sl hd, calc cmt ip, sil cmt ip, v sl calc ip, sme n calc, micmica; SH: lt-dk gy, fri-frm, blk-ymorph, plty ip, n calc, v slty

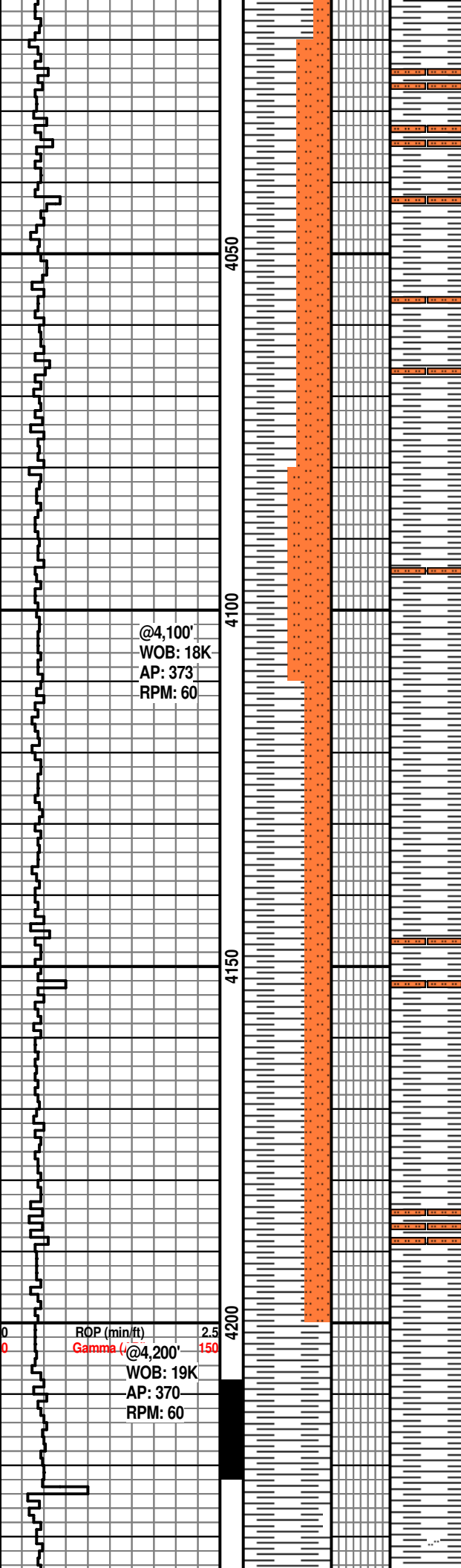
SLTST: lt-med gy, dk gy ip, frm-sl hd, calc cmt ip, sil cmt ip, v sl calc ip, sme n calc, micmica; SH: lt-dk gy, fri-frm, blk-ymorph, plty ip, n calc, v slty

SH: lt-dk gy, fri-frm, blk-ymorph, plty ip, n calc, v slty; SLTST: lt-med gy, dk gy ip, frm-sl hd, calc cmt ip, sil cmt ip, v sl calc ip, sme n calc, micmica



MD: 3,864'
DEV: 1.6
AZM: 318.5

MD: 3,958'
DEV: 0.6
AZM: 334.3



@4,100'
WOB: 18K
AP: 373
RPM: 60

ROP (min/ft) 2.5
Gamma (L) 150
@4,200'
WOB: 19K
AP: 370
RPM: 60

SH: lt-dk gy, fri-frm, blk-ymorph, plty ip, n calc, v slty; SLTST: lt-med gy, dk gy ip, frm-sl hd, calc cmt ip, sil cmt ip, v sl calc ip, sme n calc, micmica

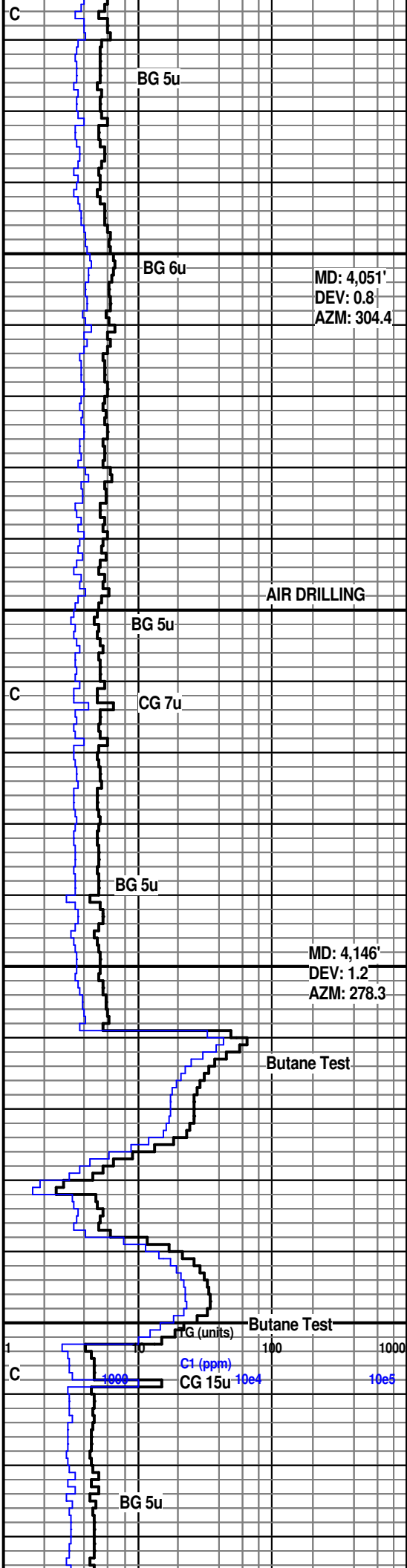
SH: lt-dk gy, fri-frm, blk-ymorph, plty ip, n calc, v slty; SLTST: lt-med gy, dk gy ip, frm-sl hd, calc cmt ip, sil cmt ip, v sl calc ip, sme n calc, micmica

SH: lt-dk gy, fri-frm, blk-ymorph, plty ip, n calc, v slty; SLTST: lt-med gy, dk gy ip, frm-sl hd, calc cmt ip, sil cmt ip, v sl calc ip, sme n calc, micmica

SH: lt-dk gy, fri-frm, blk-ymorph, plty ip, n calc, v slty; SLTST: lt-med gy, dk gy ip, frm-sl hd, calc cmt ip, sil cmt ip, v sl calc ip, sme n calc, micmica

SH: lt-dk gy, brn ip, fri-frm, blk-ymorph, sli calc, sme n calc, v slty; SLTST: lt-med gy, dk gy-dk brn ip, frm-sl hd, calc cmt ip, sil cmt ip, v sl calc ip, sme n calc, micmica

SH: lt gy, fri-frm, plty-ymorph, sme v sli calc, mstly n calc, sme slt



BG 5u

BG 6u

MD: 4,051'
DEV: 0.8
AZM: 304.4

AIR DRILLING

BG 5u

CG 7u

BG 5u

MD: 4,146'
DEV: 1.2
AZM: 278.3

Butane Test

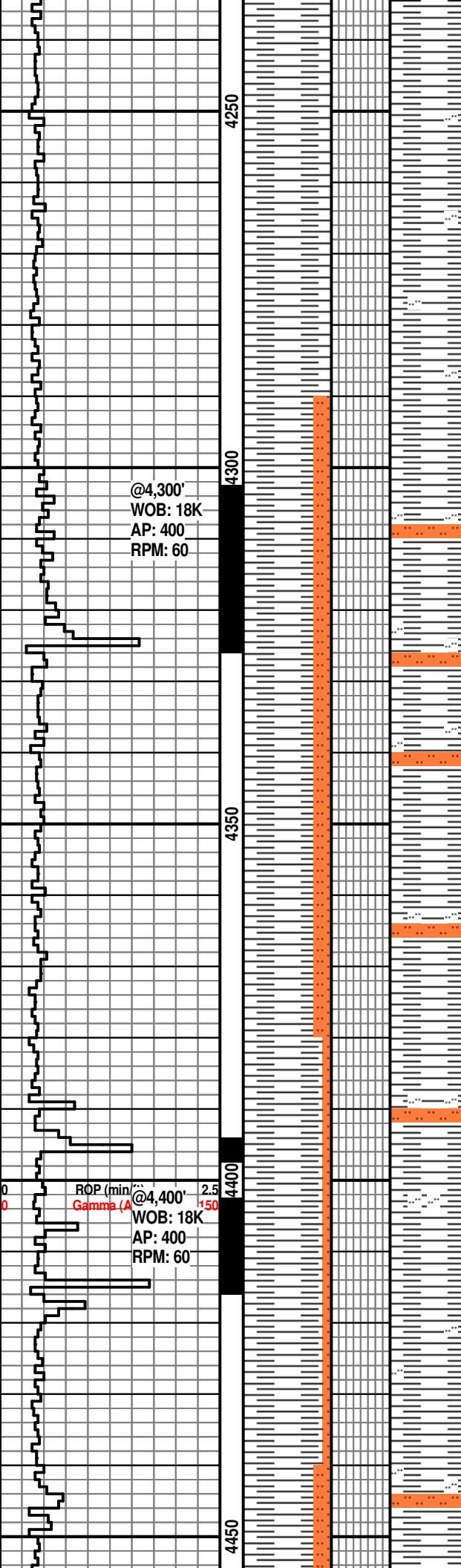
Butane Test

CG (units)

C1 (ppm)

CG 15u

BG 5u



@4,300'
WOB: 18K
AP: 400
RPM: 60

ROP (min) @4,400' 2.5
Gamma (A) 150
WOB: 18K
AP: 400
RPM: 60

SH: lt gy- gy brn, frm, plty- amorph, n calc, sl calc ip, sity ip, micmica ip

MD: 4,240'
DEV: 2.4
AZM: 301.7

SH: lt gy- gy brn, frm, plty- amorph, n calc, sl calc ip, sity ip, micmica ip

BG 6u

SH: lt gy- gy brn, frm, plty- amorph, n calc, sl calc ip, sity ip, micmica ip;
SLTST: lt- m gy- gy brn, frm- sl hd, sl calc, micmica ip

AIR DRILLING
DLB@4,300'
CG 154u

C

BG 7u

SH: lt gy- gy brn, frm, plty- amorph, n calc, sl calc ip, slty ip, micmica ip;
SLTST: lt- m gy- gy brn, frm- sl hd, sl calc, micmica ip

MD: 4,334'
DEV: 1.5
AZM: 330.8

BG 7u

SH: lt gy- gy brn, frm, plty- amorph, n calc, sl calc ip, slty ip, micmica ip;
SLTST: m gy- gy brn, lt gy ip, frm- sl hd, sl calc, micmica ip

G 17u

G 26u

SH: lt gy- gy brn, frm, plty- amorph, n calc, sl calc ip, slty ip, micmica ip;
SLTST: m gy- gy brn, lt gy ip, frm- sl hd, sl calc, micmica ip

CG 118u

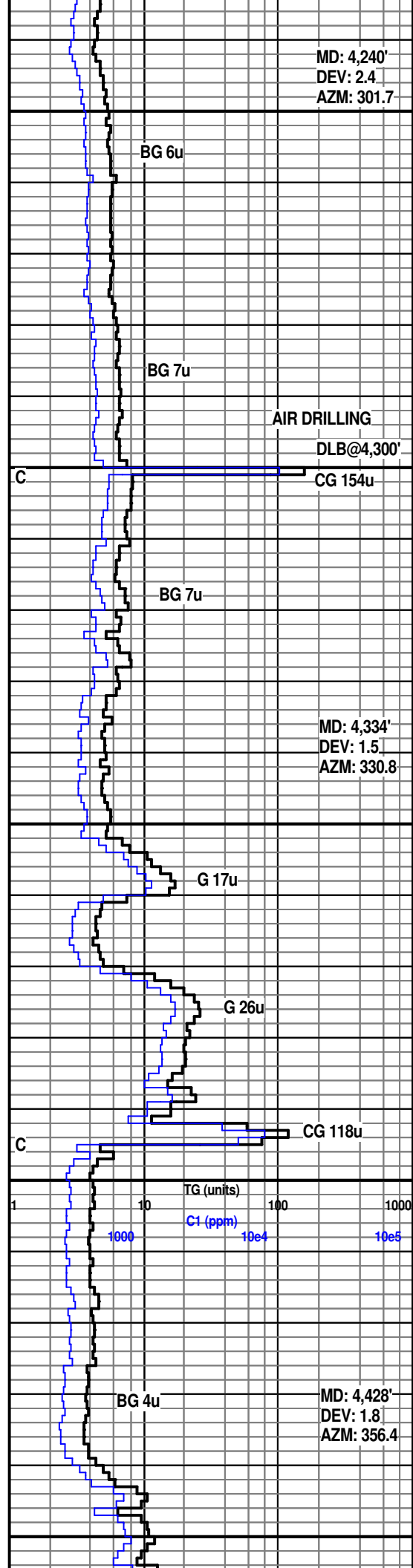
C

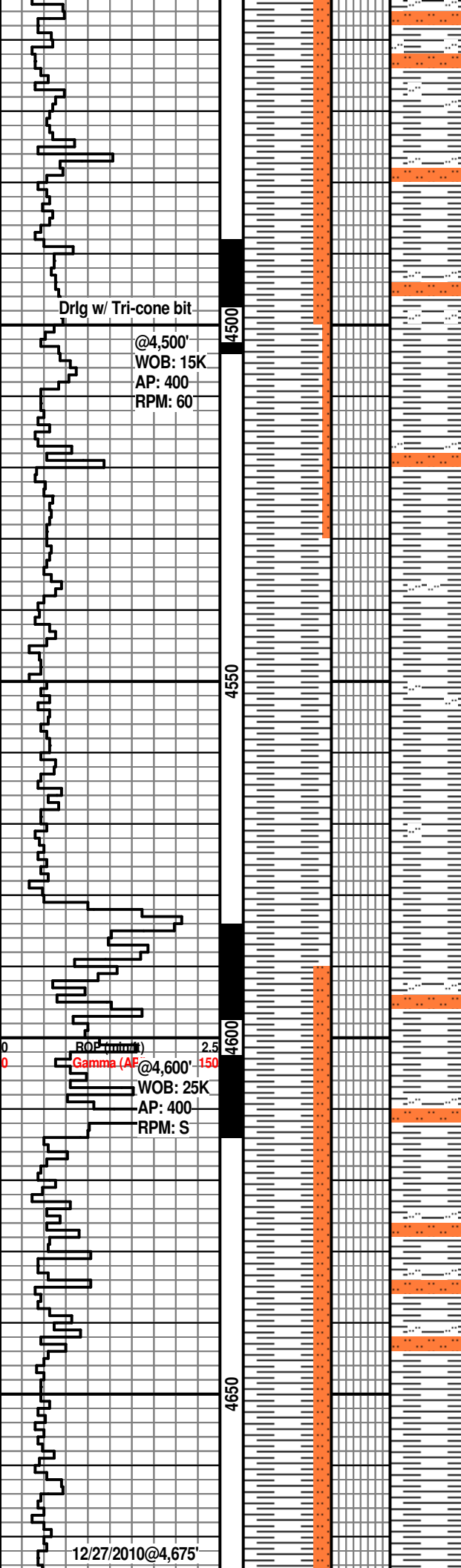
SH: lt gy- gy brn, frm, plty- amorph, n calc, sl calc ip, sity ip, micmica ip;
SLTST: m gy- gy brn, lt gy ip, frm- sl hd, sl calc, micmica ip

MD: 4,428'
DEV: 1.8
AZM: 356.4

BG 4u

SH: lt gy- gy brn, frm, plty- amorph, n





calc, slty ip, micmica ip; SLTST: m- dk gy- gy brn, frm- sl hd, n calc

SH: lt gy- gy brn, frm, plty- amorph, n calc, slty ip grdng to sltst, micmica ip; SLTST: m- dk gy brn, lt gy ip, frm- sl hd, n calc

SH: lt gy- gy brn, frm, plty- amorph, n calc, slty ip grdng to sltst, micmica ip; SLTST: m- dk gy brn, lt gy ip, frm- sl hd, n calc

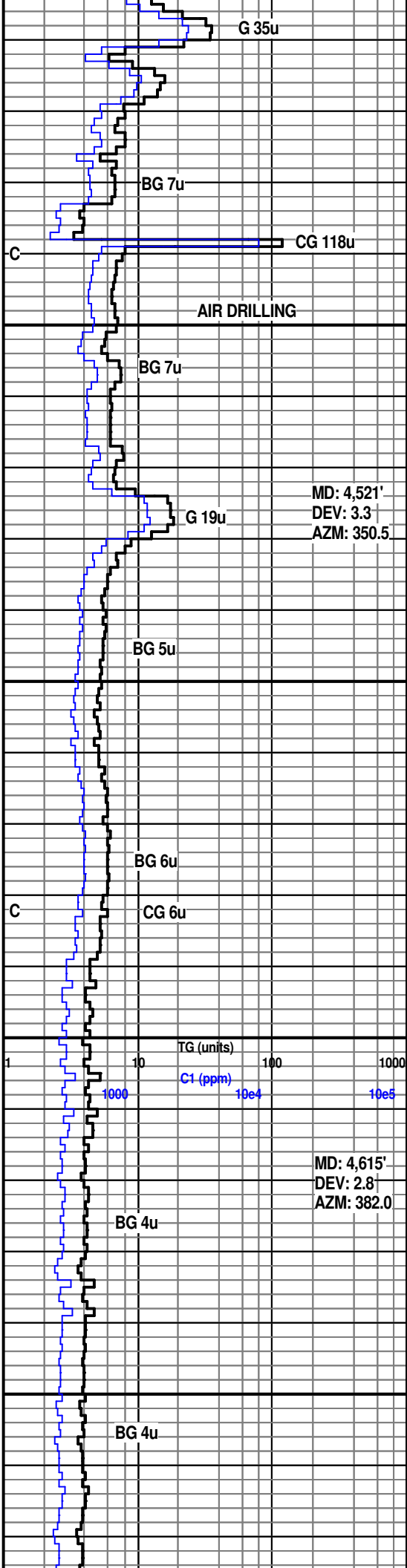
SH: lt gy, frm, plty- amorph, pred n calc, sl calc ip, slty ip

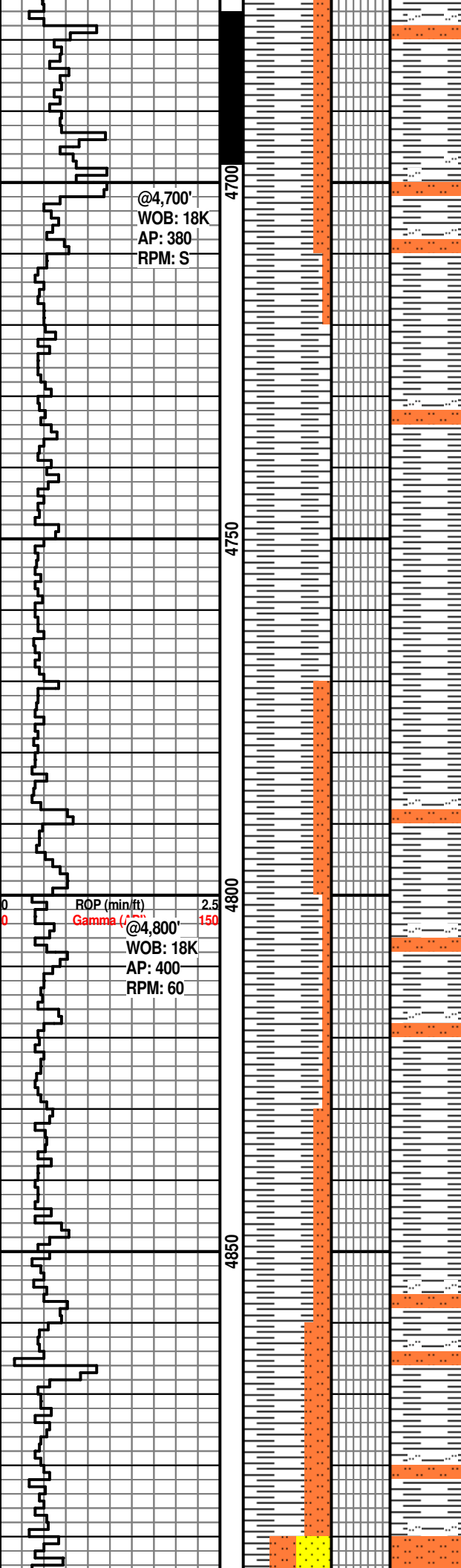
SH: pred lt gy grn, m gy brn ip, plty, n calc, slty ip

SH: pred lt gy grn, m gy brn ip, plty- amorph, n calc, slty ip grdng to SLTST: lt gy, occ m gy brn, frm- sl hd, n calc

SH: pred lt gy grn, m gy brn ip, plty- amorph, n calc, slty ip grdng to SLTST: lt gy, occ m gy brn, frm- sl hd, n calc

SH: pred lt gy grn, m gy brn ip, plty- amorph, n calc, slty ip grdng to SLTST: lt gy, occ m gy brn, frm- sl hd, n calc





@4,700'
WOB: 18K
AP: 380
RPM: S

@4,800'
WOB: 18K
AP: 400
RPM: 60

SH: pred lt gy grn, m gy brn ip, plty-amorph, n calc, slty ip grdng to SLTST: lt gy, occ m gy brn, frm- sl hd, n calc

SH: lt gy, m gy ip, sft- sl frm, plty-amorph, m calc, micmica ip, slty ip grdng to SLTST: lt gy, frm- sl hd, blk, m- v calc

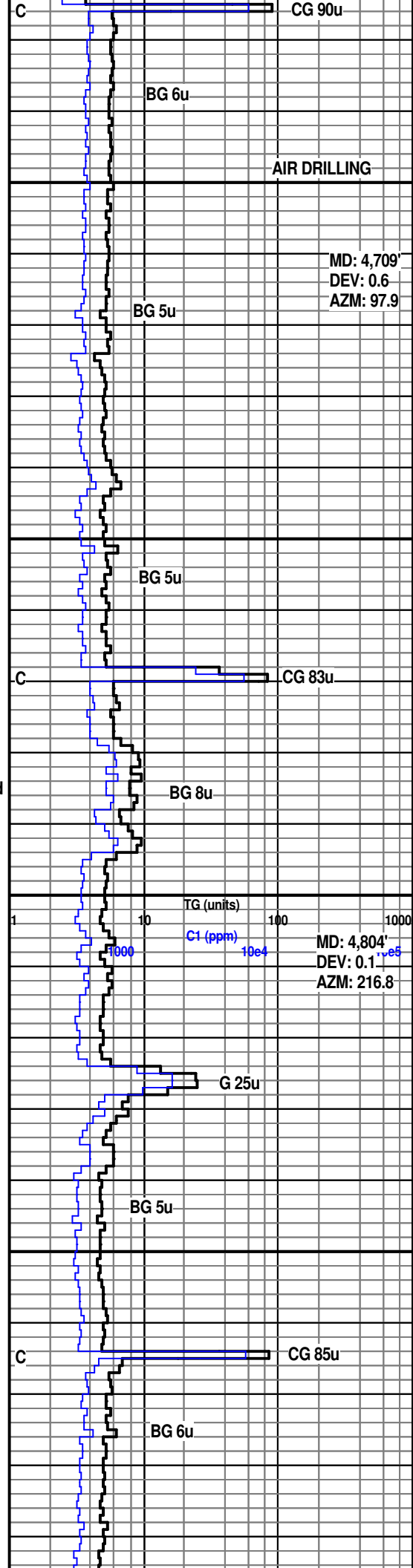
SH: m gy- gy brn, sl frm- frm, blk- plty, n calc, sity ip

SH: lt- m gy- gy brn, sl frm- frm, blk- plty, n calc, sity ip grdng to SLTST: pred lt gy, m gy- gy brn ip, frm- sl hd, blk, pred n calc, sl- m calc ip

SH: lt- m gy, m- dk gy brn ip, sl frm- frm, plty- blk, n calc, sity ip grdng to SLTST: pred lt gy, m gy- gy brn ip, frm- sl hd, blk, n calc, micmica ip, tr fd pyr

SH: lt- m gy, m- dk gy brn ip, sl frm- frm, plty- blk, n calc, sity ip grdng to SLTST: pred lt gy, m gy- gy brn ip, frm- sl hd, blk, n calc, micmica ip, tr fd pyr

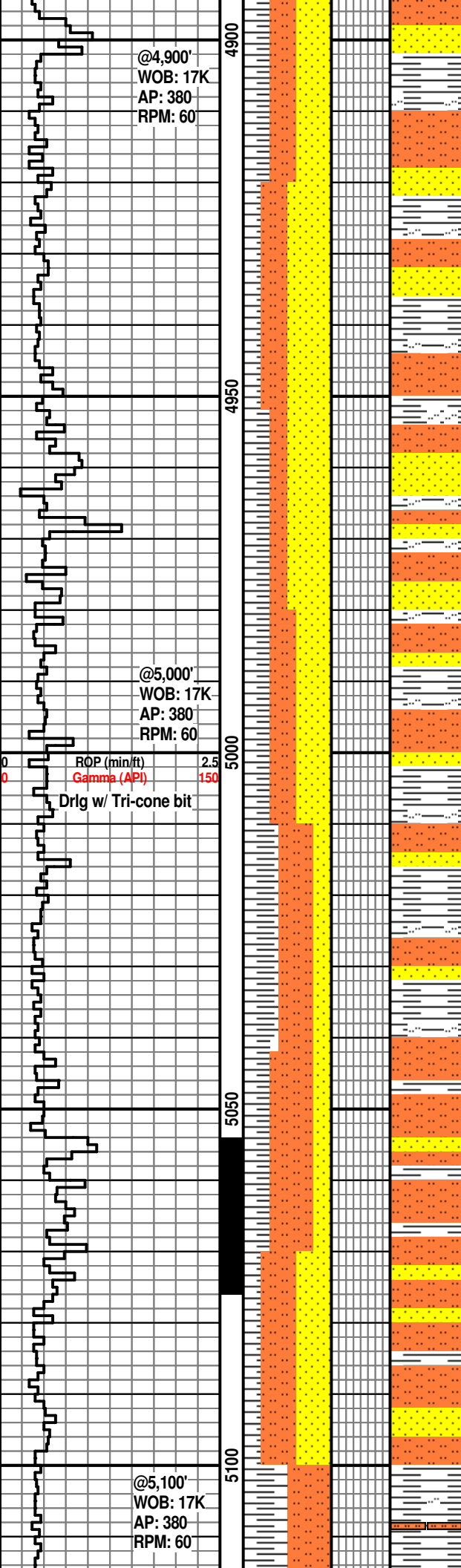
SH: lt- m gy- gy grn, frm, blk- plty, n calc, sity ip grdng to SLTST: lt gy, frm- sl hd, blk, n calc



AIR DRILLING

MD: 4,709'
DEV: 0.6
AZM: 97.9

MD: 4,804'
DEV: 0.1
AZM: 216.8



SS: lt gy, slit-vf gr, sbrnd-sbang, med srtd, sl calc ip, frm; SLTST: lt gy- gy grn, frm- sl hd, blk, sl calc; SH: lt gy grn, frm, blk- pty, n calc, slty ip grdng to sltst

SS: lt gy- lt gy grn, slit-vf gr, sbrnd-sbang, med srtd, m calc, frm; SLTST: lt gy- gy grn, frm- sl hd, blk, m calc; SH: lt gy grn, frm, blk- pty, n calc, slty ip grdng to sltst

SS: lt gy- lt gy brn, slit-vf gr, sbrnd-sbang, med srtd, sl calc, frm; SLTST: pred m dk gy brn, lt gy ip, frm- sl hd, blk, sl calc; SH: lt gy grn, frm, blk- pty, n calc, slty ip grdng to sltst

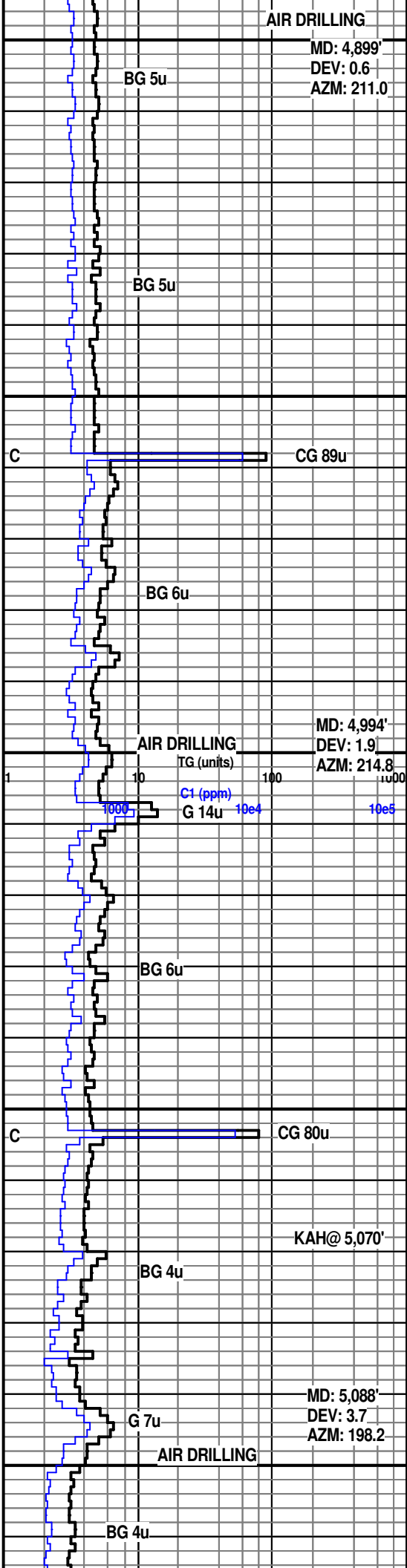
SS: lt gy- lt gy brn, slit-vf gr, sbrnd-sbang, med srtd, sl calc, frm; SLTST: pred m dk gy brn, lt gy ip, frm- sl hd, blk, sl calc; SH: lt gy grn, frm, blk- pty, n calc, slty ip grdng to sltst

SS: lt gy- lt gy brn, slit-vf gr, sbrnd-sbang, med srtd, n calc, frm; SLTST: pred m dk gy brn, lt gy ip, frm- sl hd, blk, sl calc; SH: lt gy grn, frm, blk- pty, n calc, slty ip grdng to sltst

SLTST: lt gy, m gy ip, frm- sl hd, blk, sl calc; SH: lt gy grn, frm, blk- pty, n calc, slty ip grdng to sltst; SS: lt gy- m gy, slit-vf gr, sbrnd-sbang, med srtd, n calc, frm

SLTST: pred m dk gy, lt gy ip, frm- sl hd, blk, sl calc; SS: lt gy, slit-vf gr, sbrnd-sbang, med srtd, sl calc, frm; SH: lt gy, frm, blk- pty, n calc, slty ip grdng to sltst

SLTST: m-dk gy ip, frm- sl hd, pty-blky, n-sl calc; SH: lt gy ip, md-dk gy ip, frm, blk-pty, n calc, slty ip grdng to sltst



AIR DRILLING

MD: 4,899'
DEV: 0.6
AZM: 211.0

BG 5u

BG 5u

C

CG 89u

BG 6u

AIR DRILLING

MD: 4,994'
DEV: 1.9
AZM: 214.8

TG (units)

C1 (ppm)

G 14u

BG 6u

C

CG 80u

KAH@ 5,070'

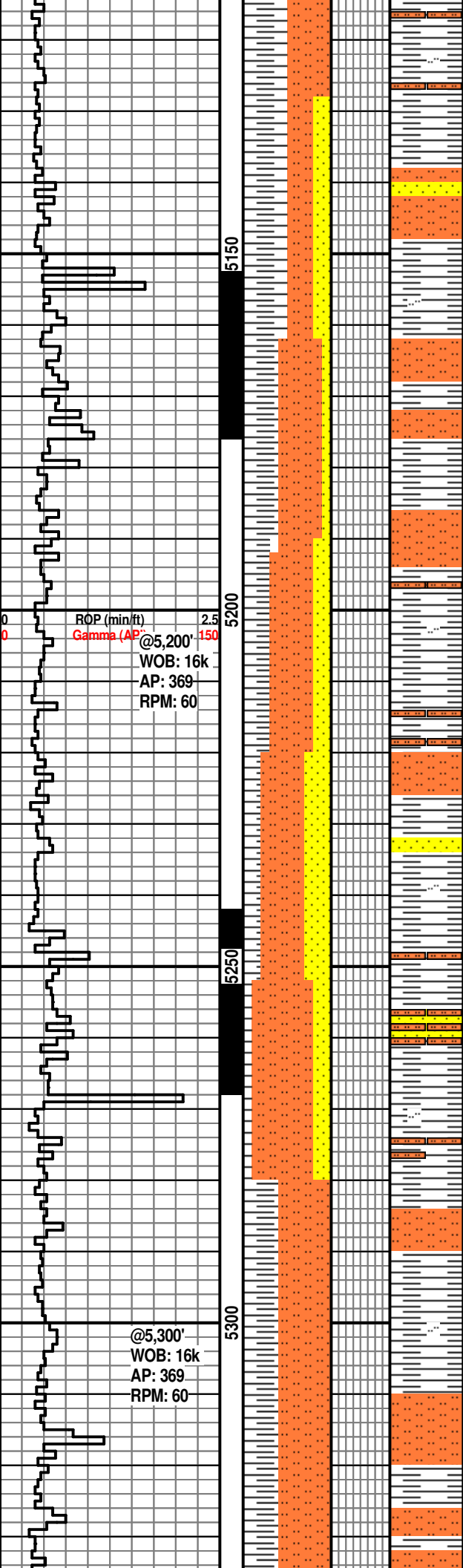
BG 4u

G 7u

AIR DRILLING

MD: 5,088'
DEV: 3.7
AZM: 198.2

BG 4u



SH: lt gy ip, md-dk gy ip, frm, blk-pty, n calc, slty ip; SLTST: pred m dk gy, frm-sl hd, blk-pty, sl calc; SS: pred lt gy, wht ip, slt- vf gr, sbrnd- sbang, med srted, sl calc, frm

SLTST: pred m dk gy, lt gy ip, frm- sl hd, blk, n calc; SH: lt gy -m dk gy, frm, blk-pty, n calc, slty ip; tr SS: pred lt gy, wht ip, slt- vf gr, sbrnd- sbang, med srted, sl calc, frm

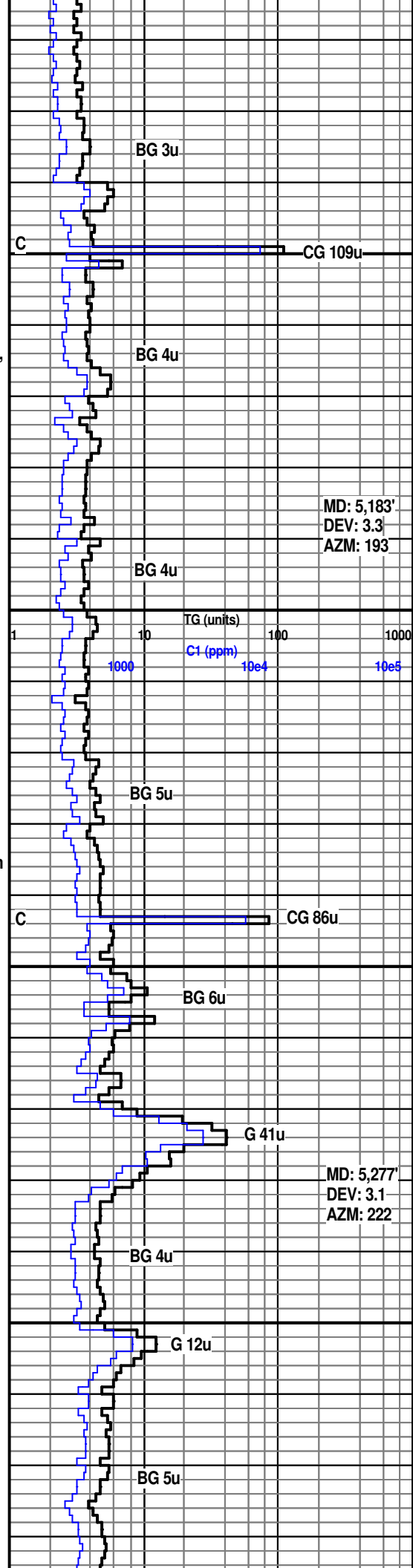
SLTST: pred m dk-dk gy, frm- sl hd, blk, n calc; SH: lt gy-m gy, frm, blk-pty, n calc, slty ip; SS: pred lt gy, wht ip, slt- vf gr, sbrnd- sbang, med srted, sl calc, frm

SLTST: lt gy, m gy ip, frm-sl hd, blk-pty, n calc, micmica; SS: lt gy-wht, slt- vf gr, sbrnd- sbang, med srted, sl calc, frm, micmica, tr fn pyr; SH: lt gy-m gy, frm, blk-pty, n calc, slty ip

SLTST: lt-m gy ip, frm-sl hd, blk-pty, n calc, micmica; SS: lt gy-wht, slt- vf gr, sbrnd- sbang, med srted, sl calc, frm, micmica, tr fn pyr; tr slty SH

SLTST: lt gy, m gy ip, frm-sl hd, blk-pty, n calc, micmica; SH: lt gy-m gy, frm, blk-pty, n calc, slty, vry slty grad to sltst

SLTST: lt gy, m gy ip, frm-sl hd, blk-pty, n-vry sli calc, micmica, tr fn pyr; SH: lt gy-m gy, frm, blk-pty, n calc, slty, vry slty grad to sltst



BG 3u

CG 109u

BG 4u

BG 4u

BG 5u

CG 86u

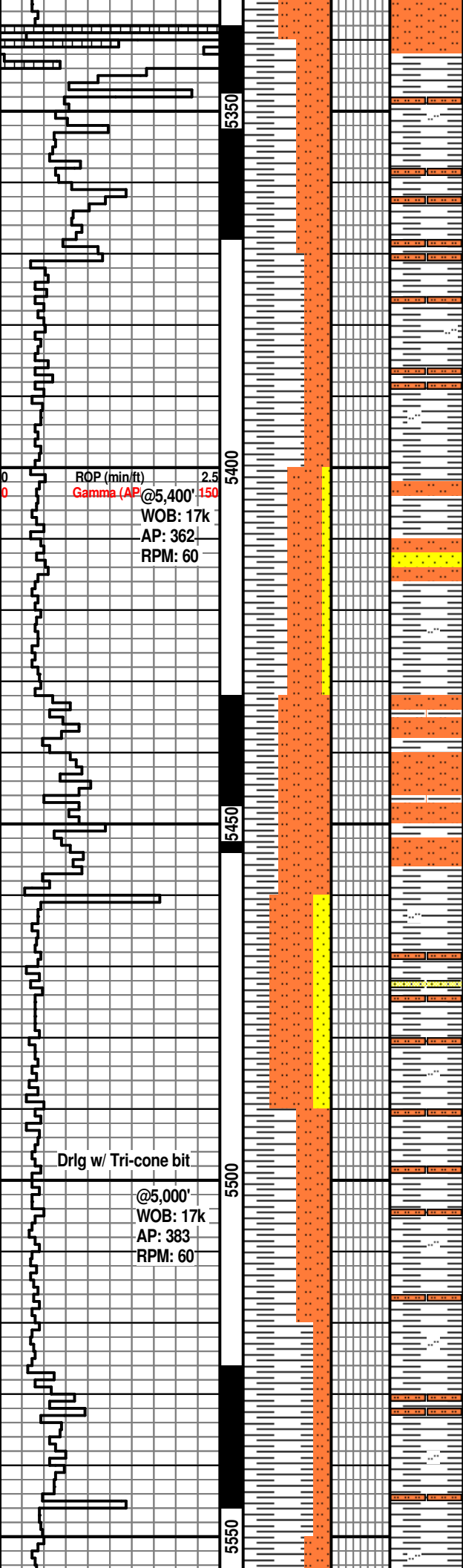
BG 6u

G 41u

BG 4u

G 12u

BG 5u



SH: lt gy-m gy, m dk gy ip, frm-sli hd, blk-pty, n calc, sity, vry sity grad to sltst; SLTST: lt gy, m gy ip, frm-sl hd, blk-pty, n-vry sli calc, micmica, tr fn pyr; rr lt blu SS

SH: lt gy-m gy, m dk gy ip, frm-sli hd, blk-pty, n calc, vry sity grad to sltst; SLTST: lt gy, m gy ip, rr lt blu, frm-sl hd, blk-pty, n-vry sli calc, micmica, tr fn pyr

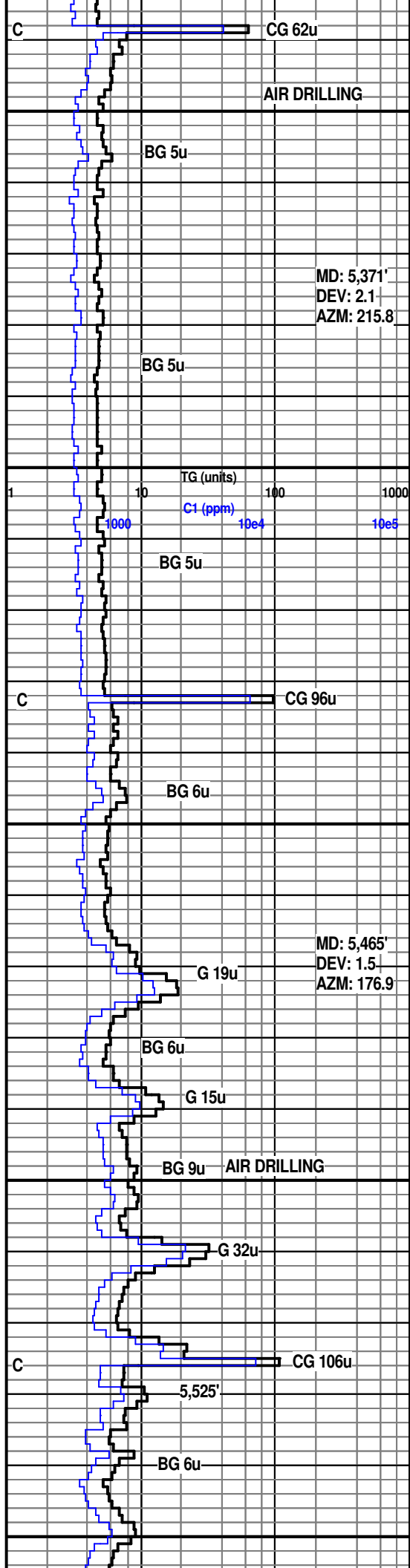
SH: lt gy-m gy, m dk gy ip, frm-sli hd, blk-pty, n calc, vry sity grad to sltst; SLTST: lt gy, m gy ip, rr lt blu, frm-sl frm, sft ip, blk-pty, n-vry sli calc, micmica, tr fn pyr; tr fri SS

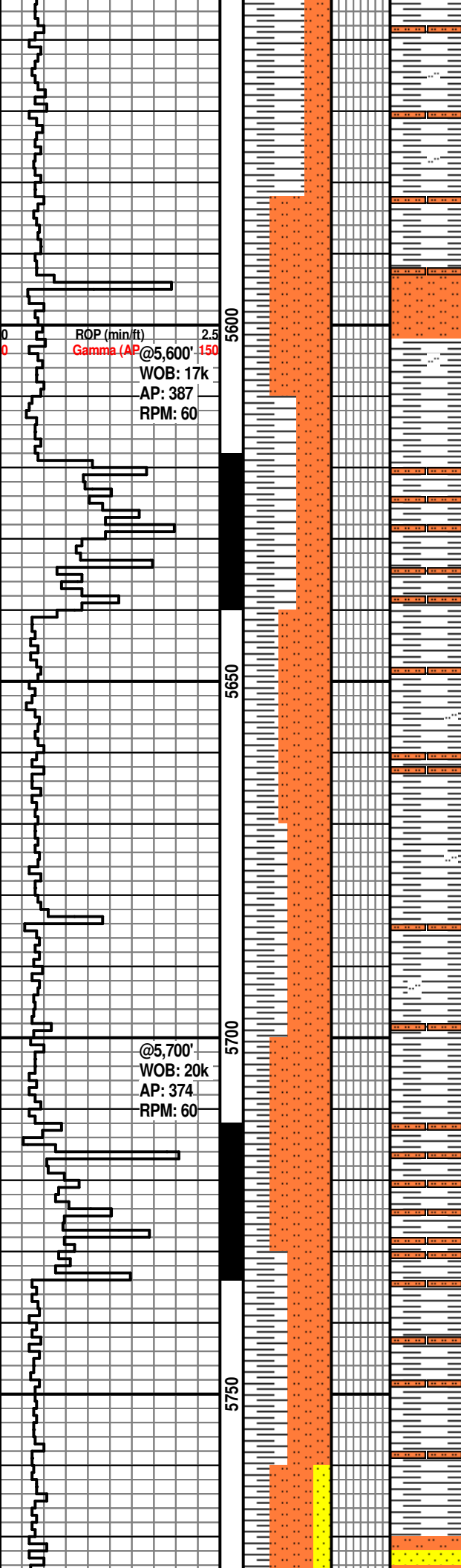
SLTST: lt-m gy, frm, sft ip, blk-pty, n calc, micmica, tr fn pyr; SH: lt gy-m gy, rr m dk gy, frm-sli hd, blk-pty, n calc, vry sity grad to sltst

SLTST: lt-m gy, brn-dk brn ip, pred frm, sli frm-sft ip, blk-pty, amorph ip, n calc, micmica, tr fn pyr; SH: lt gy-m gy, rr m dk gy, frm-sli hd, blk-pty, n calc, vry sity grad to sltst, rr fn pyr chks; SS: wht-tn, slt- vf gr, sbrnd- sbang, med srted, pred silc cmt, calc cmy ip, frm, micmica, tr fn pyr;

SH: lt gy, frm-sli hd, blk-pty, n calc, pred sity, vry sity grad to sltst ip; SLTST: dkgy-brn-prl, pred frm, sli frm-sft ip, amorph, n calc, micmica, tr fn pyr

SH: lt gy, m gy ip, frm, blk-pty, n calc, pred sity, vry sity grad to sltst ip; SLTST: dk gy, sli frm-frm, sft ip, amorph-blky, n calc, micmica, tr fn pyr





SH: lt gy, m-dk gy ip, frm, blk-ply, n-vry sli calc, slty, vry slty grad to sltst ip, tr micmica; SLTST: m gy, tr brn-grn, sli frm-frm, sft ip, amorph-blky, n calc, tr micmica

SLTST: dk brn-prl, dk gy ip, frm, amorph, n-sli calc, tr micmica; SH: lt gy, sli frm, blk-ply, n calc, slty ip, vry slty grad to sltst ip, tr micmica

SH: lt gy, sli frm-frm, sli hd ip, blk-ply, n calc, slty, tr micmica; SLTST: dk brn-dk gy, frm-sli hd, amorph, n-sli calc, tr micmica

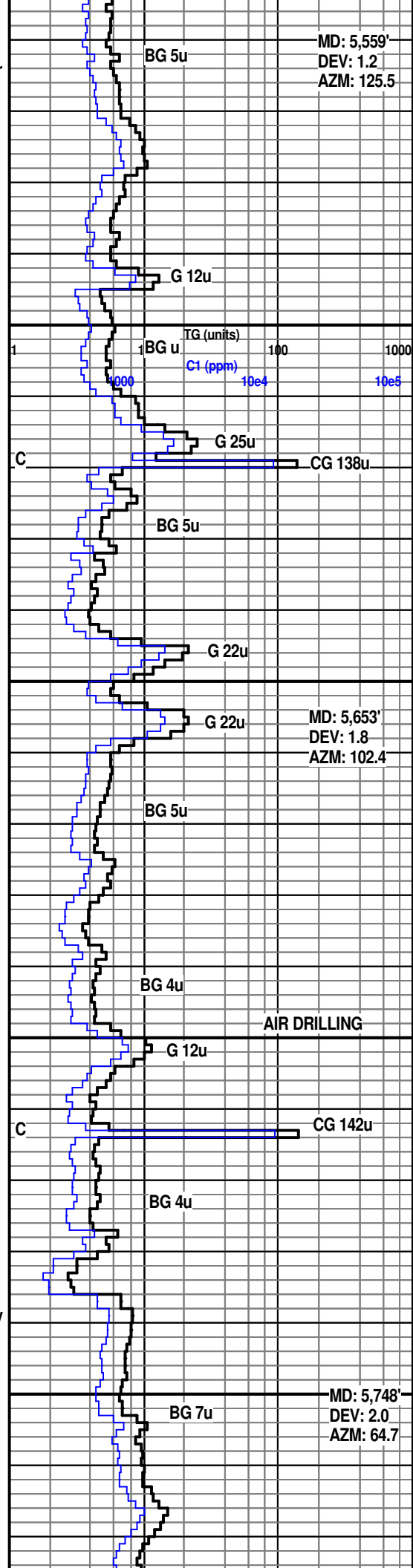
SH: pred lt gy, lt brn ip, sli frm-frm, sli hd ip, blk-ply, n calc, slty, tr micmica; SLTST: m gy, tr dk gy, frm, amorph-blky, n-sli calc, micmica

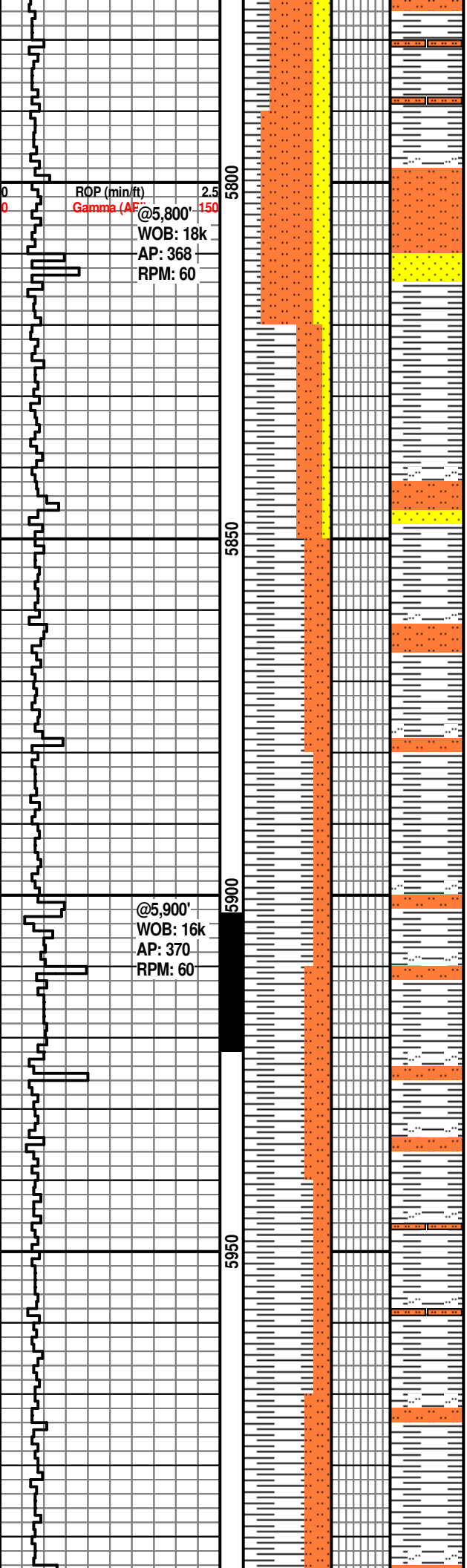
SH: lt gy-lt brn, frm-sli hd, blk-ply, tr amorph, n calc, slty, tr micmica, rr pp pyr; SLTST: dk brn to prl, tr m-dk gy, frm, pred amorph, blk ip, tr pty, n-sli calc, micmica, pp pyr

SH: lt gy, m gy ip, frm-sli frm, tr sli hd/sft, blk-ply, n calc, slty, tr micmica; SLTST: dk gy, m gy, brn ip, frm, sli frm ip, amorph, tr blk-ply, n calc, micmica

SLTST: m gy-blk, brn ip, frm, sli frm ip, amorph, n calc, micmica; SH: lt gy, m gy ip, frm-sli frm, tr sli hd, blk-ply, n calc, slty, tr micmica

SLTST: m-dk gy, frm-sli frm, amorph, n calc, micmica; SH: lt gy, m gy ip, frm-sli frm, tr sli hd, blk-ply, n calc, slty, tr micmica; SS: wht-lt av slt-vf gr shrd-





micmica; SS: wht-lt gy, slt-vf gr, sbrnd-sbang, med srtd, silc/calc cmt, frm, micmica, tr fn pyr

SLTST: m-dk gy, frm-sli frm, n calc, micmica ip; SH: lt gy, m gy ip, frm-sli frm, blk-ply, n calc, slty, tr micmica; SS: wht-lt gy, slt-vf gr, sbrnd-sbang, med srtd, n calc, frm, tt

SH: lt-m gy brn, frm-sl hd, blk-ply, n calc; SLTST: m-dk gy-gy brn, frm-sl hd, blk, n calc; SS: wht-lt gy, slt-vf gr, sbrnd-sbang, med srtd, n calc, frm, tt

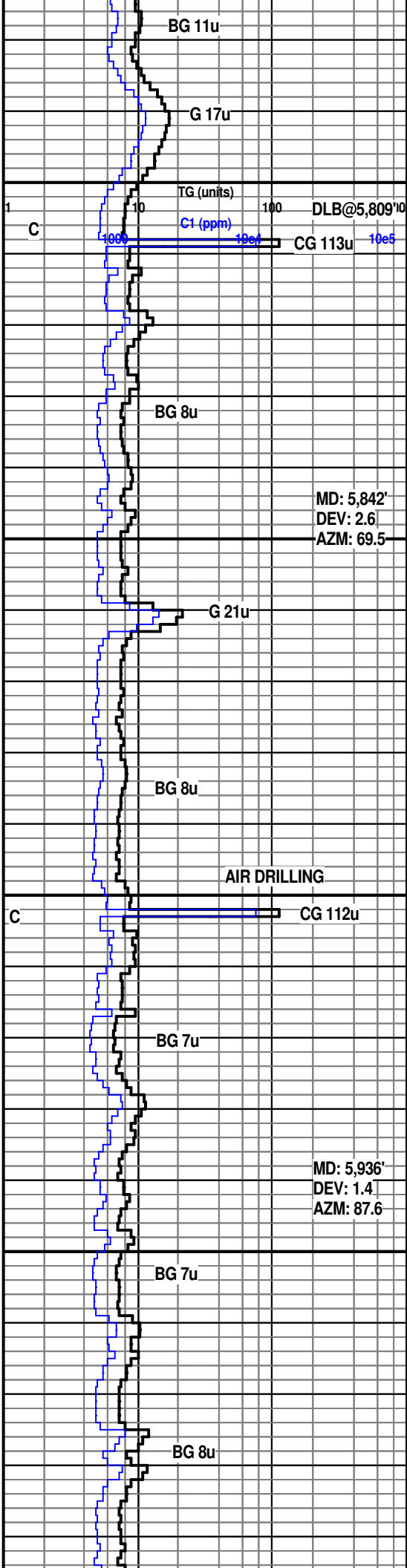
SH: lt-m gy brn, frm-sl hd, blk-ply, n calc, slty ip; SLTST: m-dk gy-gy brn, frm-sl hd, blk, n calc

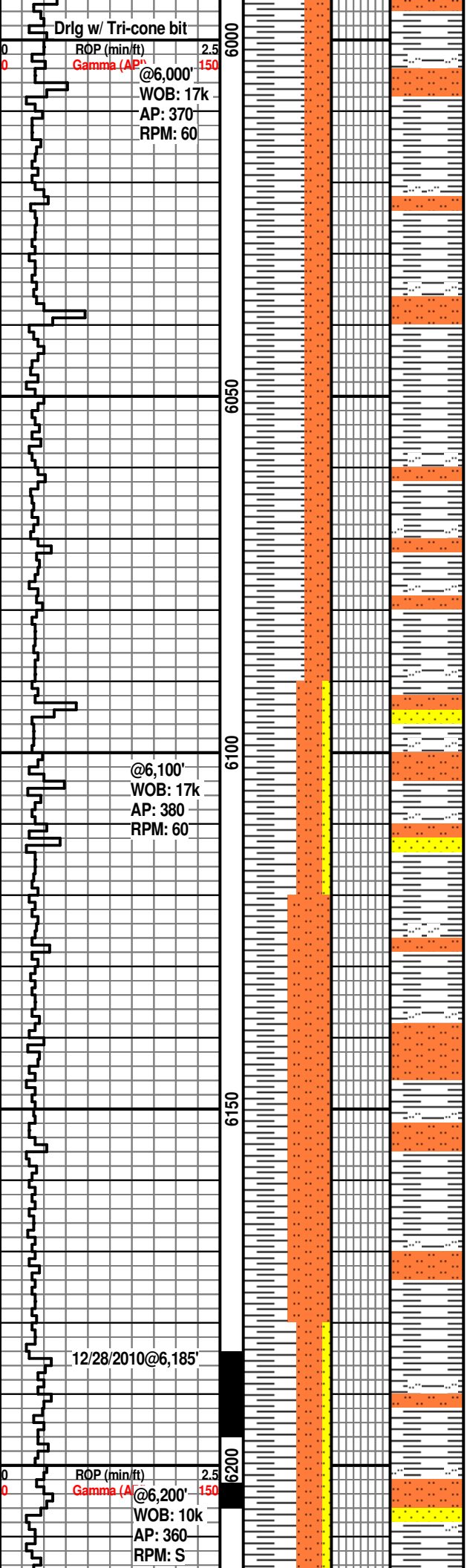
SH: lt-m gy brn, frm-sl hd, blk-ply, n calc, slty ip; SLTST: m-dk gy-gy brn, lt gy ip, frm-sl hd, blk, n calc

SH: lt-m gy brn, frm-sl hd, blk-ply, n calc, slty ip; SLTST: m-dk gy-gy brn, lt gy ip, frm-sl hd, blk, n calc

SH: lt-m gy brn-gy grn, frm-sl hd, blk-ply, n calc, slty ip; SLTST: m-dk gy-gy brn, lt gy ip, frm-sl hd, blk, n calc

SH: m gy brn, frm-sl hd, blk-ply, n calc, slty ip; SLTST: lt gy, m-dk gy-gy brn ip, frm-sl hd, blk, n calc, micmica ip





SH: m gy brn, frm- sl hd, blk- pty, n calc, slty ip; SLTST: lt gy, m- dk gy- gy brn ip, frm- sl hd, blk, n calc, micmica ip

SH: m gy brn- gy grn, frm- sl hd, blk- pty, n calc, slty ip; SLTST: lt gy, m- dk gy- gy brn ip, frm- sl hd, blk, n calc, micmica ip

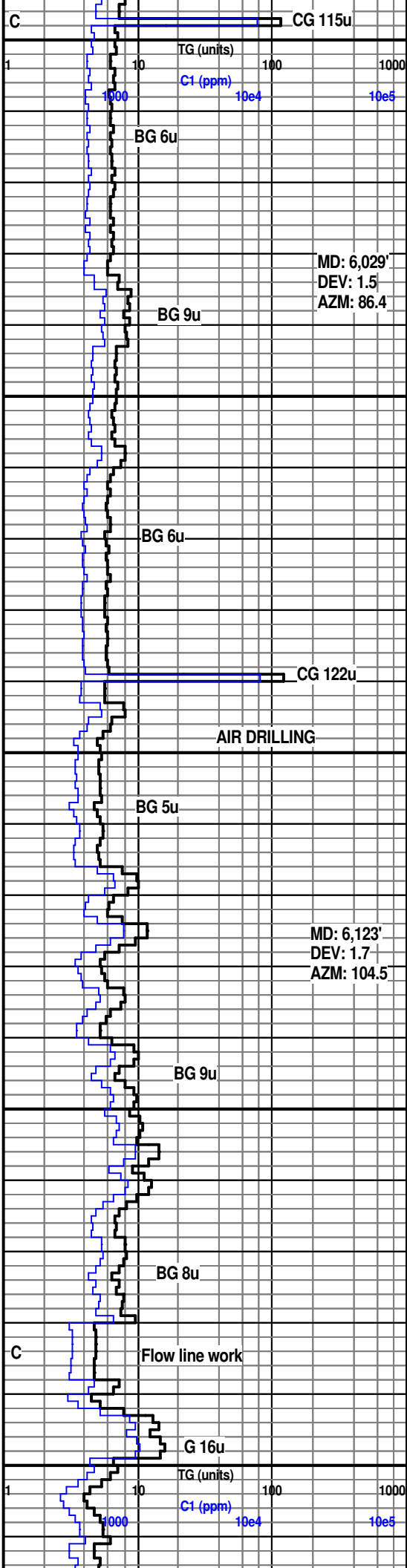
SH: m gy brn- gy grn, frm- sl hd, blk- pty, n calc, slty ip; SLTST: lt gy, m- dk gy- gy brn ip, frm- sl hd, blk, n calc, micmica ip

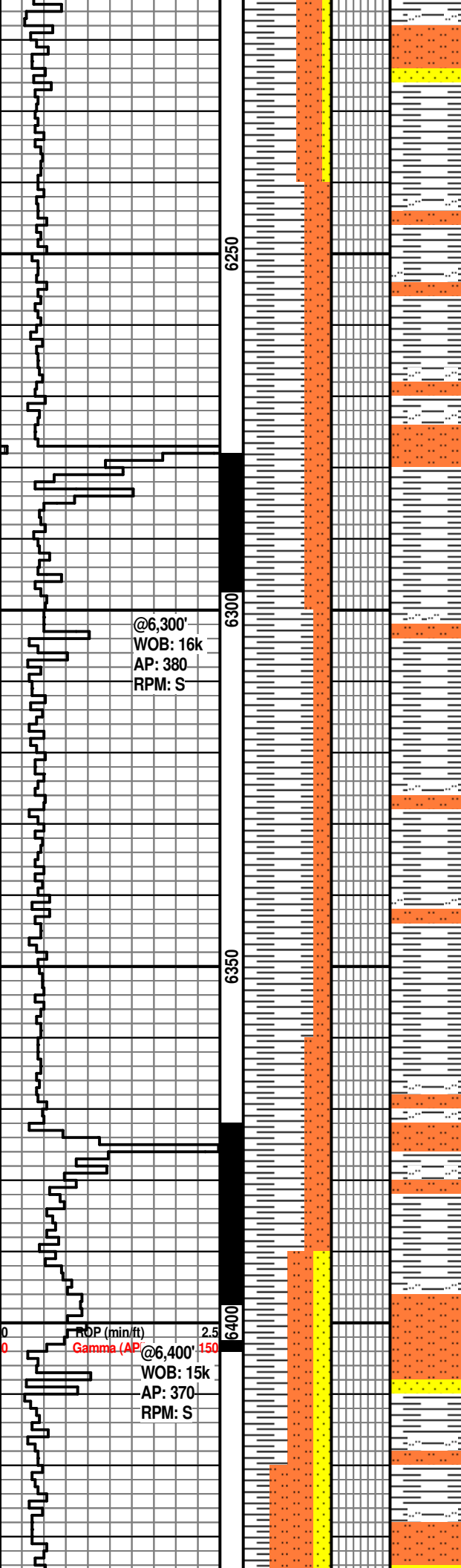
SH: m gy brn, frm- sl hd, blk- pty, n calc, slty ip; SLTST: lt gy, m- dk gy- gy brn ip, frm- sl hd, blk, n calc, micmica ip; SS: lt gy, slt- vf gr, v sl calc, frm, tt

SH: lt- m gy brn, frm- sl hd, blk- pty, n calc, slty ip; SLTST: m- dk gy brn, lt gy ip, frm- sl hd, blk, sl calc, micmica ip

SH: lt- m gy brn, frm- sl hd, blk- pty, n calc, slty ip; SLTST: m- dk gy brn, lt gy ip, frm- sl hd, blk, sl calc, micmica ip

SH: lt- m gy brn- gy grn, frm- sl hd, blk- pty, n calc, slty ip; SLTST: m- dk gy brn, lt gy ip, frm- sl hd, blk, sl calc, micmica ip; SS: wht- lt gy, slt- vf gr, v sl calc, frm, tt





SH: lt- m gy brn- gy grn, frm- sl hd, blk- pty, n calc, slty ip; SLTST: m- dk gy brn, lt gy ip, frm- sl hd, blk, sl calc; SS: wht- lt gy, slt- vf gr, v sl calc, frm, tt

MD: 6,217'
DEV: 2.6
AZM: 141.3

SH: lt- m gy brn- gy grn, frm- sl hd, blk- pty, n calc, slty ip; SLTST: m- dk gy brn, lt gy ip, frm- sl hd, blk, sl calc

BG 5u

BG 6u

CG 104u

C

SH: lt- m gy brn- gy grn, frm- sl hd, blk- pty, n calc, slty ip grdng to SLTST: m- dk gy brn, lt gy ip, frm- sl hd, blk, sl calc

BG 7u

AIR DRILLING

@6,300'
WOB: 16k
AP: 380
RPM: S

SH: lt- m gy brn- gy grn, frm- sl hd, blk- pty, n calc, slty ip grdng to SLTST: m- dk gy brn, lt gy ip, frm- sl hd, blk, sl calc

MD: 6,311'
DEV: 4.7
AZM: 159.1

BG 5u

SH: lt- m gy brn- gy grn, frm- sl hd, blk- pty, n calc, slty ip grdng to SLTST: m- dk gy brn, lt gy ip, frm- sl hd, blk, sl calc

BG 6u

SH: lt- m gy brn- gy grn, frm- sl hd, blk- pty, n calc, slty ip grdng to SLTST: m- dk gy brn, lt gy ip, frm- sl hd, blk, sl calc

C

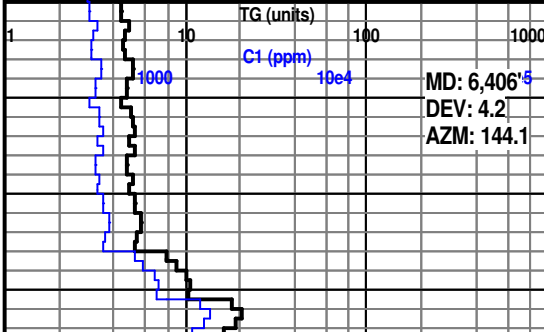
CG 97u

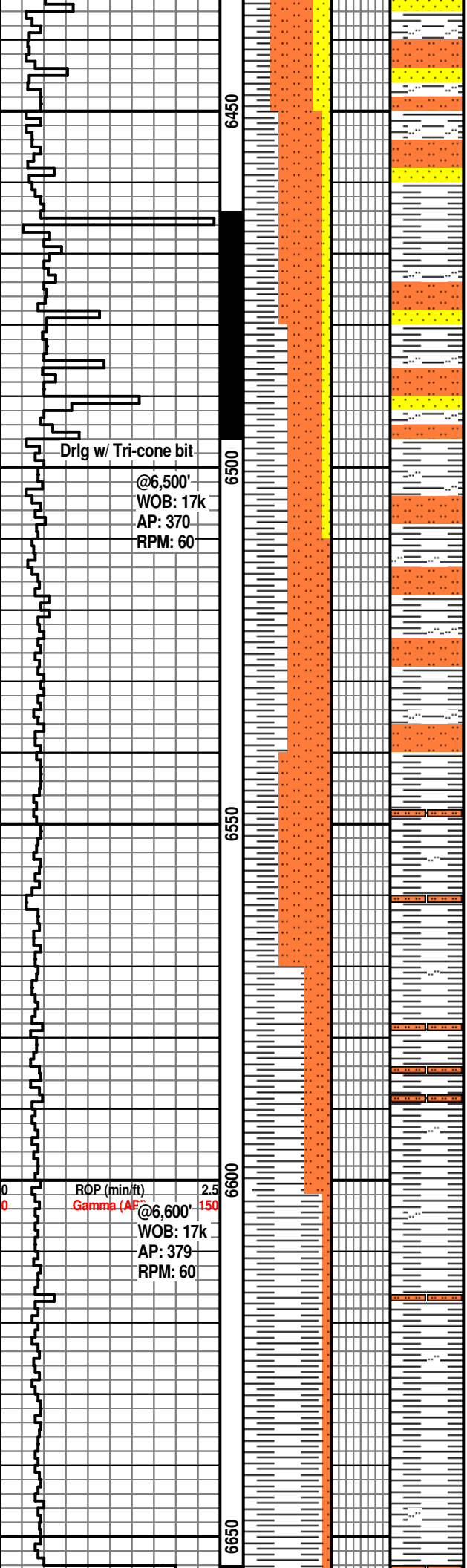
BG 5u

SH: m gy brn- gy grn, frm- sl hd, blk- pty, n calc, slty ip grdng to SLTST: m- dk gy brn, lt gy ip, frm- sl hd, blk, sl calc, micmica ip; SS: wht- lt gy, slt- vf gr, sl calc, frm, tt, tr xln calc

MD: 6,406'
DEV: 4.2
AZM: 144.1

SLTST: m- dk gy brn, lt gy ip, frm- sl hd, blk, sl calc, micmica ip; SH: m gy brn- gy grn, frm- sl hd, blk- pty, n calc, slty ip





gy grn, frm- sl hd, blk- pty, n calc; SS: wht- lt gy, slt- vf gr, sl calc, frm, tt

SLTST: m- dk gy brn, lt gy ip, frm- sl hd, blk, sl calc, micmica ip; SH: m gy brn- gy grn, frm- sl hd, blk- pty, n calc; SS: wht- lt gy, slt- vf gr, sl calc, frm, tt

SLTST: m- dk gy brn, lt gy ip, frm- sl hd, blk, sl calc, micmica ip; SH: m gy brn- gy grn, frm- sl hd, blk- pty, n calc; SS: wht- lt gy, slt- vf gr, sl calc, frm, tt

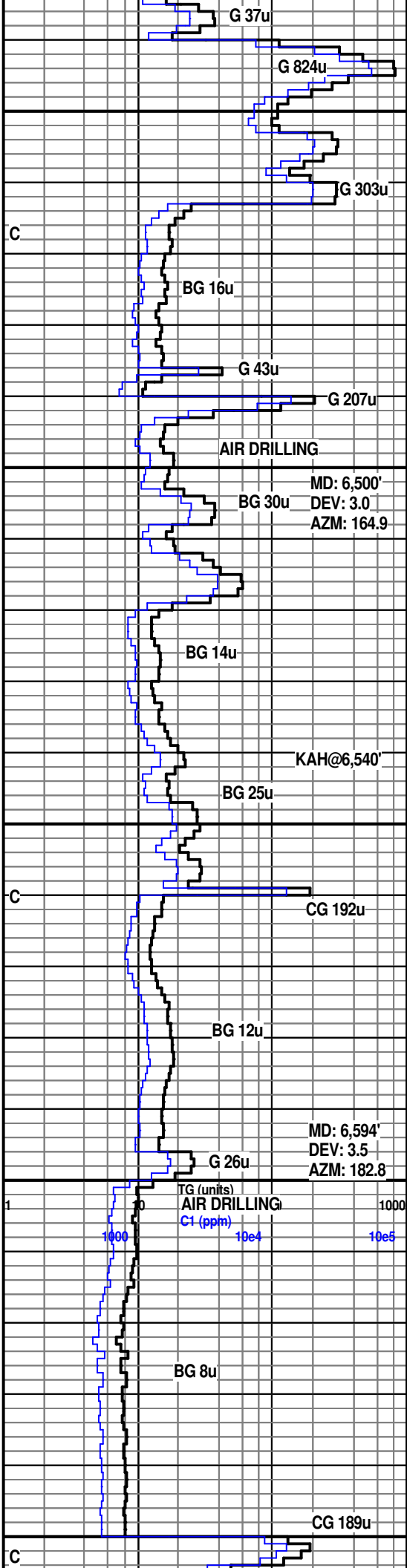
SLTST: m- dk gy brn- gy grn, lt gy ip, frm- sl hd, blk, sl calc, micmica ip; SH: m gy brn- gy grn, frm- sl hd, blk- pty, n calc

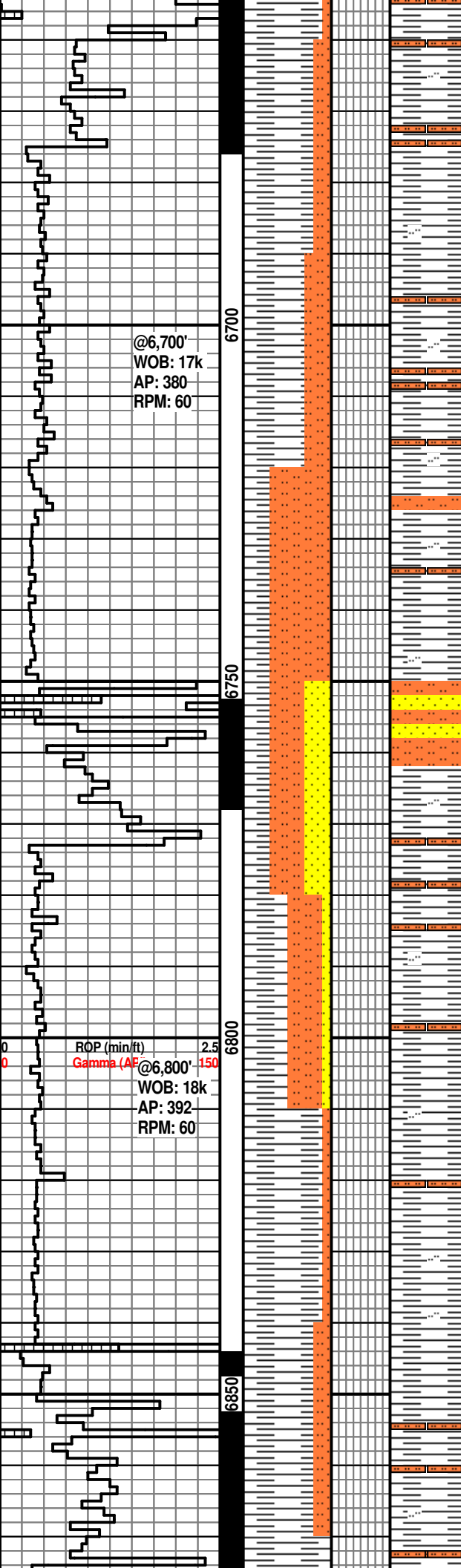
SLTST: m- dk gy brn- gy grn, lt gy ip, frm- sl hd, amorph- blk, pty ip, n- sl calc, micmica ip; SH: m gy, frm- sl hd, blk- pty, n calc

SH: lt- m gy, frm- sl hd, blk- pty, n calc, slty ip grdng to sltst, tr micmica, rr pp pyr; SLTST: m- dk gy, lt gy ip, frm- sl hd, amorph, tr blk- pty, sl calc, micmica

SH: lt- m gy, frm- sl hd, blk- pty, n calc, slty ip grdng to sltst; SLTST: m gy, lt gy ip, frm- sl hd, amorph, tr blk- pty, n- sl calc, micmica

SH: lt gy, m gy ip, frm- sl hd, blk- amorph, rr pty, pred n calc, rr vry sl calc, slty ip grdng to sltst, micmica; SLTST: m gy, frm- sl hd, amorph, tr blk- pty, n- sl calc, micmica





SH: lt gy, m gy ip, frm-sl hd, hd ip, blk-orph, rr plty, pred n calc, rr vry sl calc, slty ip grdng to sltst, micmica; SLTST: m-lt gy, frm-sl hd, hd ip, amorph, tr blk-orph, n calc, micmica

SH: lt-m gy ip, sl hd-hd, blk-orph, rr plty, n-vry sl calc, slty ip grdng to sltst, micmica; SLTST: lt gy, frm-sl hd, hd ip, amorph, n calc, micmica

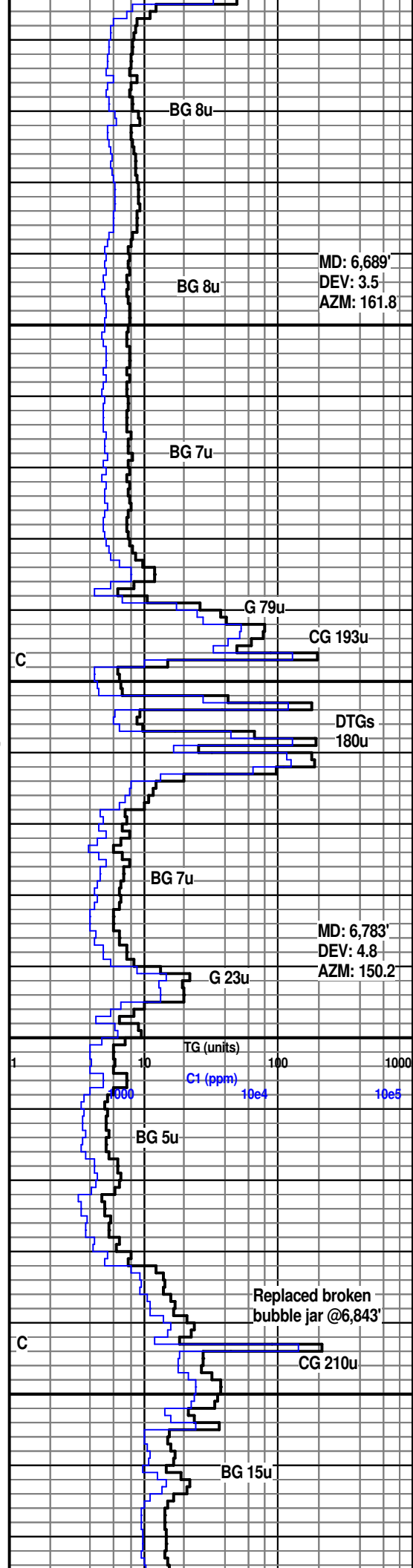
SLTST: dk brn-prl, brn ip, vry hd-hd, amorph, n calc, abnt micmica, fn pyr ip, tr pp pyr, clr ss grn ip; SH: m gy ip, sl hd-hd, blk-orph, rr plty, n-vry sl calc, pred vry slty grdng to sltst, micmica

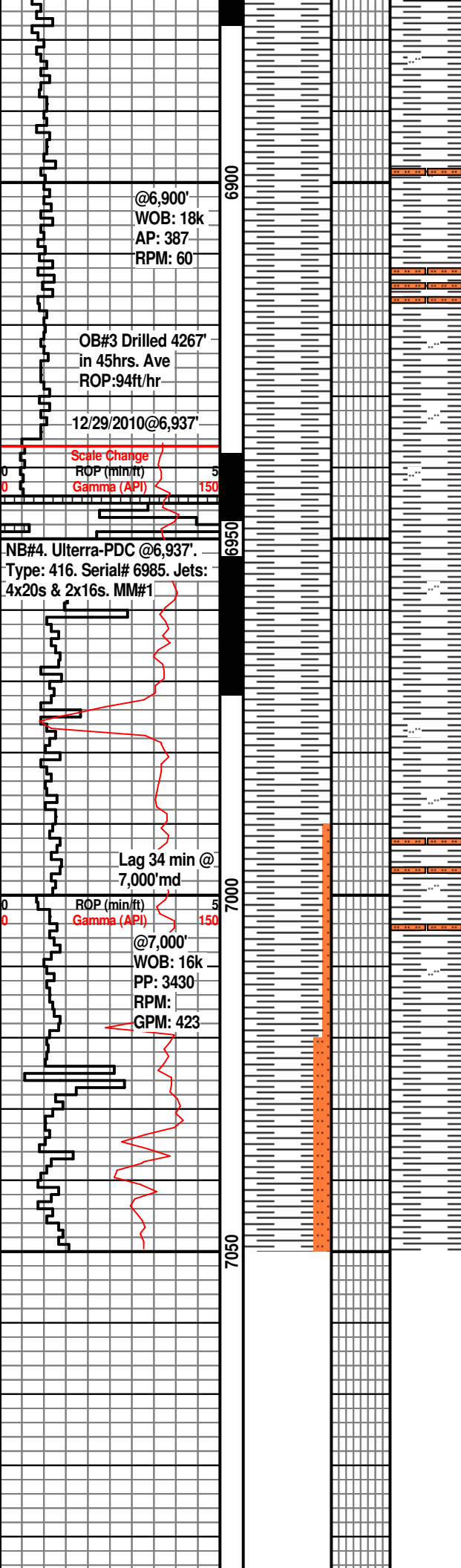
SH: m gy-lt brn, tn ip, lt gy ip, frm-sl hd, hd ip, blk-orph, n calc; SLTST: lt gy, grn-blu ip, sl hd-hd, amorph, n calc, micmica; SS: lt blu, wht ip, clr ip, slt-vf gr, silc cmt

SH: m-dk gy, prl ip, pred hd, vry hd ip, blk-orph, n calc; SLTST: dk brn-prl, brn ip, m gy ip, hd, amorph, n calc, micmica; SS: wht-ltgy, slt-vf gr, silc cmt, micmica, tr fn pyr

SH: dk gy, m gy ip, dk brn ip, frm, sl hd ip, sl frm ip, tr sft, blk, amorph ip, rr plty, n calc, micmica, slty-vry slty ip; SLTST: brn-dk brn, sl frm-frm, hd ip, amorph, n calc, micmica

SH: dk gy, m gy ip, dk brn ip, frm-sl hd, sl frm ip, blk-orph, rr plty, n calc, micmica, slty-vry slty ip; SLTST: brn-dk brn, frm-sl hd, hd ip, amorph, n calc, micmica





SH: m gy-ltgy ip, tn ip, frm-sl frm, sft, blk-pty, rr amorph, n calc, micmica, slty ip; tr SLTST: dk gy-dk brn, frm- sl hd, hd ip, amorph, n calc, micmica

MD: 6,877'
DEV: 5.9
AZM: 171.9

SH: ltgy, sl frm-sft, frm ip, blk- pty, amorph ip, n calc, micmica, sl slty- slty ip; rr SLTST: brn, sl hd-hd ip, amorph, n calc, micmica

Switching to Oil-based mud @ 6,937' md

SH: ltgy ip, dk gy ip, tr tn, sl frm-sft, frm ip, blk- amorph, n- sl calc, tr calc, micmica, sl slty ip; rr SLTST: brn- dk gy, sl hd, amorph, n calc, micmica

SH: ltgy, sft, sl frm- frm ip, amorph, n- sl calc, micmica, sl slty ip, tr fn pyr

SH: ltgy ip, m-dk gy ip, sft-sl frm, frm ip, amorph-blky, n- sl calc, micmica, slty ip; rr SLTST: m gy, sl hd-frm, amorph, n calc, rr calc, micmica

SH: ltgy ip, m-dk gy ip, sft-sl frm, frm ip, amorph-blky, n- sl calc, micmica, slty ip grng to sltst; SLTST: m gy, sl hd-frm, sl frm ip, amorph, rr blk-pty, n-sl calc, rr calc, micmica, tr fn pyr ip

KOP @7,053'MD

