

COMPANY : STONE ENERGY  
WELL : POTOCZNY UNIT A #2H  
FIELD : BUDDY PROSPECT  
COUNTY : MARION  
STATE : WEST VIRGINIA  
COUNTRY : U.S.A.  
API NO. : 47-4902095-00

COMPANY : STONE ENERGY  
WELL : POTOCZNY UNIT A #2H  
FIELD : BUDDY PROSPECT  
COUNTY : MARION  
STATE : WEST VIRGINIA  
COUNTRY : U.S.A.  
API WELL NO. : 47-4902095-00

WELL LOCATION  
39° 34' 8.911" N 80° 16' 3.846" W  
390,329' N 1,783,573' E  
SEC:- TWP:- RANGE:-  
OTHER SERVICES

DEPTH REF. : KELLY BUSHING  
ELEVATION : 1405 ft GROUND LEVEL - MEAN SEA LEVEL  
KELLY BUSHING - GROUND LEVEL  
ALTITUDE : 18 ft

BOREHOLE RECORD

DEVIATION RECORD

HOLE SIZE in	FROM Ft	TO Ft	INCLINATION deg	FROM Ft	TO Ft
17 1/2	0	969	0 - 93	0	10417
12 1/4	969	2417			
8 3/4	2417	10417			
CASING RECORD					
CASING SIZE in	FROM Ft	TO Ft			
20	0	43			
13 3/8	43	969			
9 5/8	969	2417			

DRILLING CO. : SAXON  
RIG : 141

LMD UNIT NO. : 118-108 DISTRICT : PENNSYLVANIA  
SPUD DATE : 7/19/2010 DEPTH : 6775 Ft  
LMD START DATE : 7/17/2010 DEPTH : 10417 Ft  
LMD END DATE : 7/27/2010 TOTAL DEPTH : 3642 Ft

Run Data

RUN NUMBER	1	2			
START DATE	7/17/2010	7/20/10			
START TIME	0330	05:42			
END DATE	7/20/10	7/27/10			
END TIME	16:00	1300			
DEPTH IN (ft)	6816	7287			
DEPTH OUT (ft)	7287	10417			
LOG TOP (ft)	6775	7246			
LOG BOTTOM (ft)	7246	10376			
HOLE SIZE (in)	8 3/4	8 3/4			
MUD DATA @ (ft)	6814	10417			
MUD TYPE	WATER BASED	WATER BASED			
DENSITY (lb / gal)	13.8	14.4			
VISCOSITY (s / qt)	59	60			
pH	9	9.8			
FLUID LOSS (cm <sup>3</sup> / 30)	7.2	7.2			
SALINITY (ppm)	-	-			
Rm (ohmm @ deg F)	-	-			
Rmf (ohmm @ deg F)	-	-			
MAX TEMP (deg F)	139	168			
Rm @ MAX TEMP (ohmm)	-	-			
LWD ENGINEER #1	M. MILLER	K. WEBB			
LWD ENGINEER #2	K. WEBB	S. MILLER			
LWD ENGINEER #3					

Remarks

STONE ENERGY PRODUCTION AFE# 4642-D

SCIENTIFIC DRILLING INTERNATIONAL JOB# 23D0710084

SCIENTIFIC DRILLING INTERNATIONAL WO# 144752

FLAT AVERAGE OF +/- 1.00 APPLIED TO GAMMA CURVE.

FLAT AVERAGE OF +/- 1.00 APPLIED TO ROP CURVE.

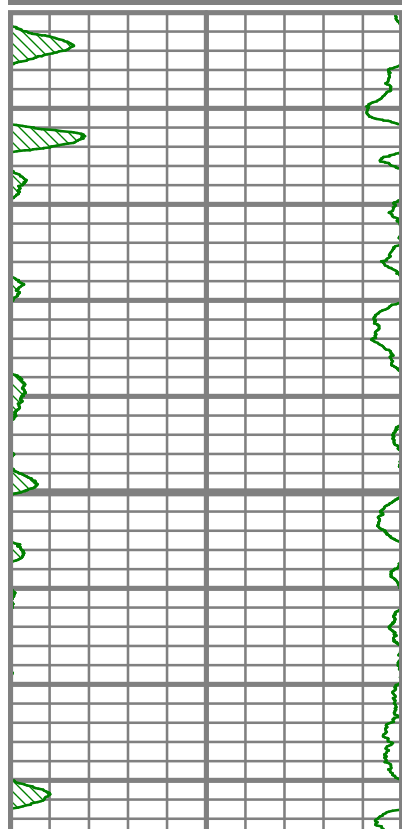
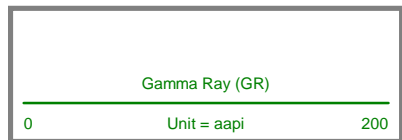
ALL REFERENCES IN THE DEPTH TRACK ARE AT BIT DEPTH.

ALL DATA IS MEMORY DATA UNLESS STATED OTHERWISE.

RUN # 1 TOOLS : CONTROLLER 161, MWD EYE 54, GAMMA 151, GAIN 36

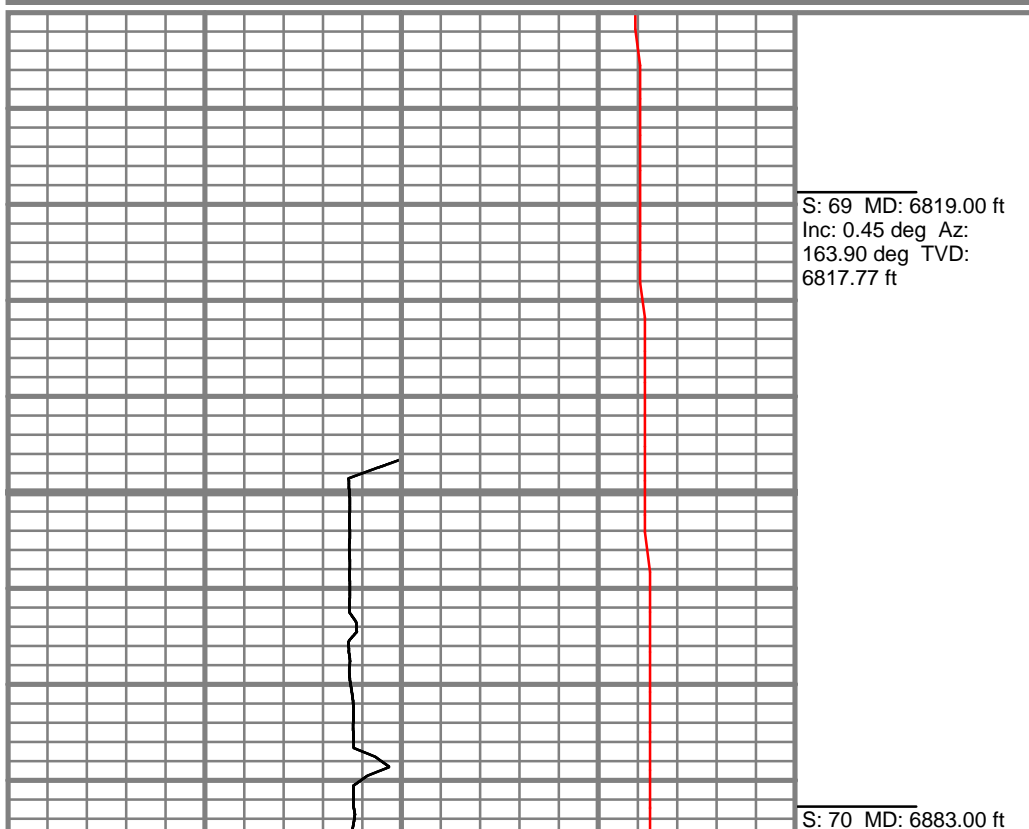
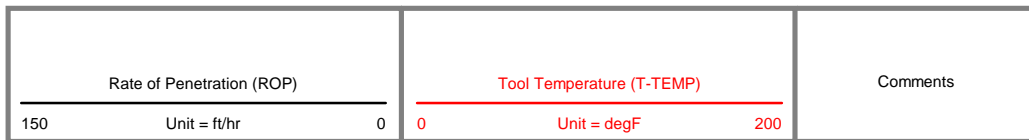
RUN # 1 TOOLS : CONTROLLER 277, MWD EYE 226, GAMMA 46, GAIN 67

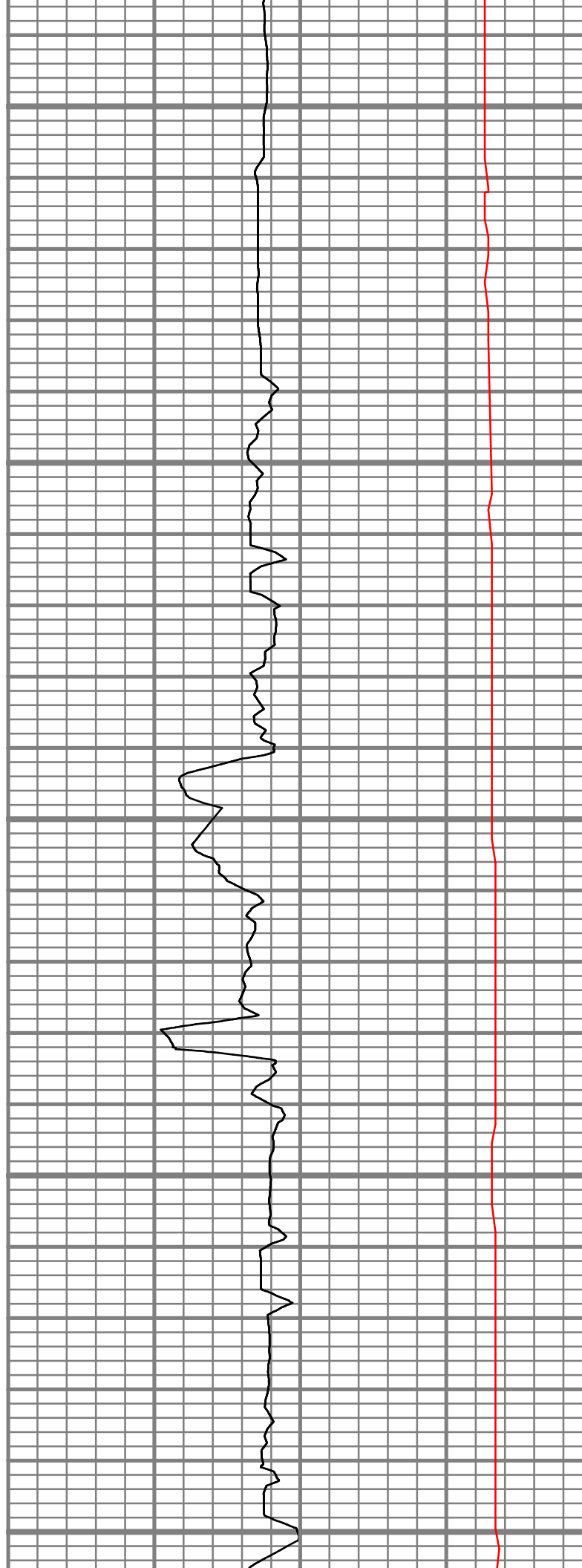
All interpretations are opinions based on inferences from electrical or other measurements and we cannot, and do not guarantee the accuracy or correctness of any interpretations, and we shall not, except in the case of gross or willful negligence on our part, be liable or responsible for any loss, costs, damages or expenses incurred or sustained by anyone resulting from any interpretation made by any of our officers, agents or employees. These interpretations are also subject to our general terms and conditions as set out in our current price schedule.



MEASURED DEPTH  
1240 (ft)

6850



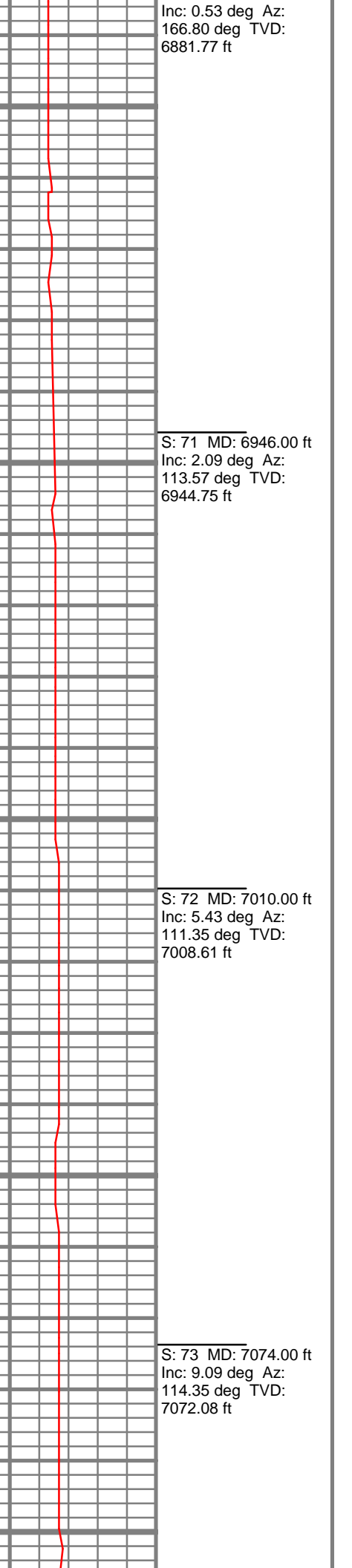


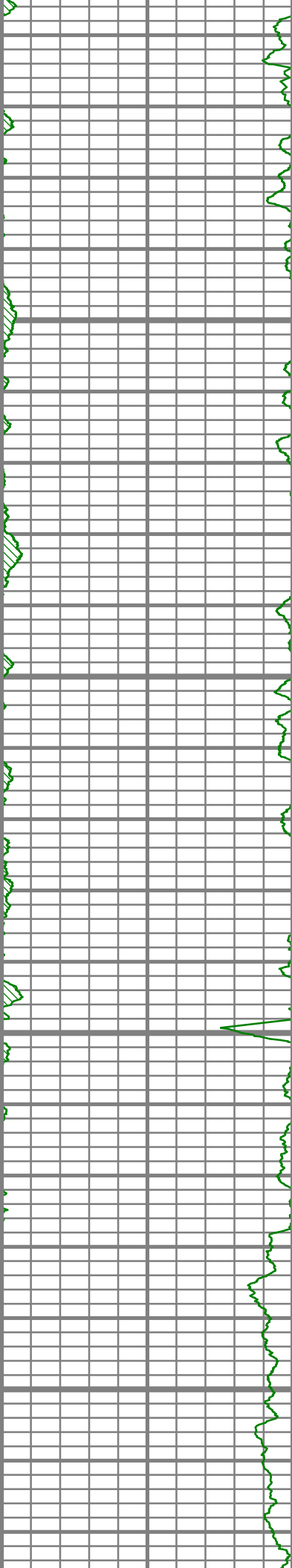
Inc: 0.53 deg Az:  
166.80 deg TVD:  
6881.77 ft

S: 71 MD: 6946.00 ft  
Inc: 2.09 deg Az:  
113.57 deg TVD:  
6944.75 ft

S: 72 MD: 7010.00 ft  
Inc: 5.43 deg Az:  
111.35 deg TVD:  
7008.61 ft

S: 73 MD: 7074.00 ft  
Inc: 9.09 deg Az:  
114.35 deg TVD:  
7072.08 ft



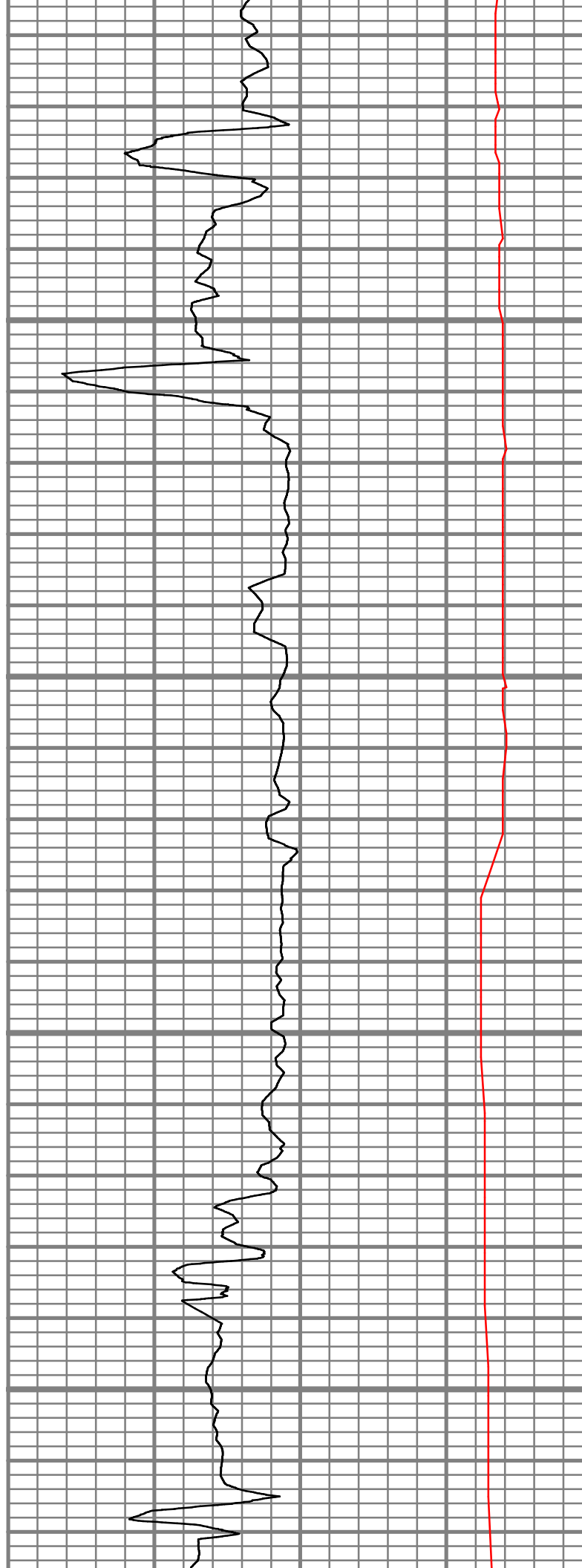


7150

7200

7250

7300



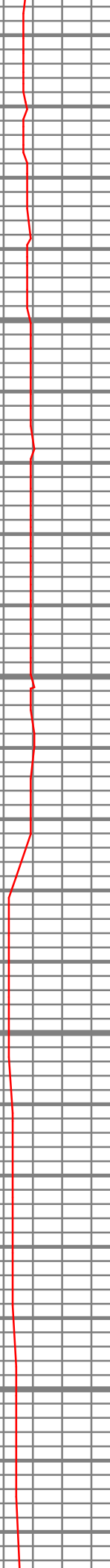
S: 74 MD: 7136.00 ft  
Inc: 12.78 deg Az:  
118.04 deg TVD:  
7132.95 ft

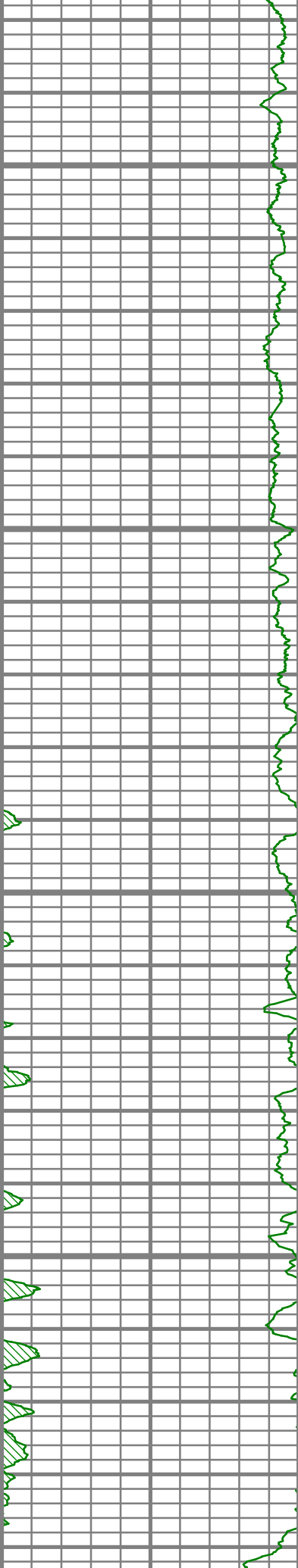
S: 75 MD: 7201.00 ft  
Inc: 16.13 deg Az:  
120.32 deg TVD:  
7195.88 ft

S: 76 MD: 7233.00 ft  
Inc: 18.75 deg Az:  
121.18 deg TVD:  
7226.41 ft

S: 77 MD: 7265.00 ft  
Inc: 21.00 deg Az:  
121.11 deg TVD:  
7256.50 ft

S: 78 MD: 7296.00 ft  
Inc: 23.04 deg Az:  
120.03 deg TVD:  
7285.24 ft



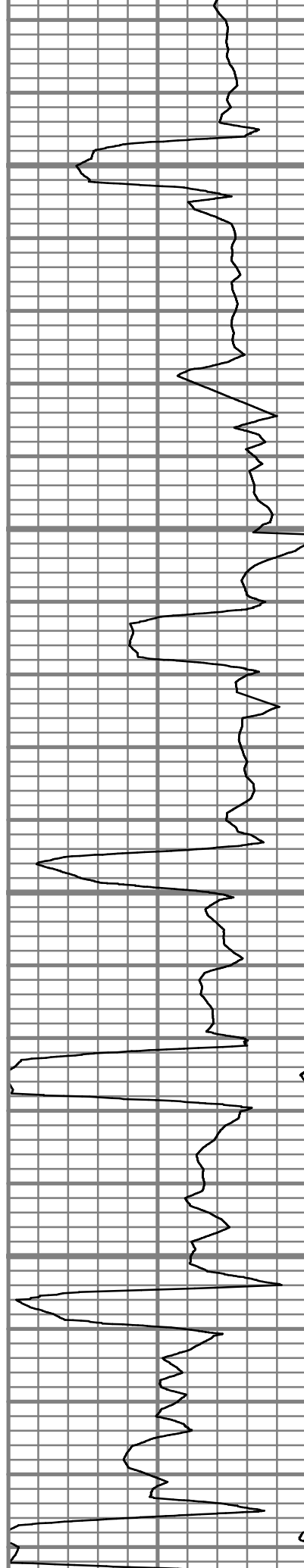


7350

7400

7450

7500



S: 79 MD: 7328.00 ft  
Inc: 25.22 deg Az:  
118.78 deg TVD:  
7314.44 ft

S: 80 MD: 7360.00 ft  
Inc: 27.42 deg Az:  
117.69 deg TVD:  
7343.12 ft

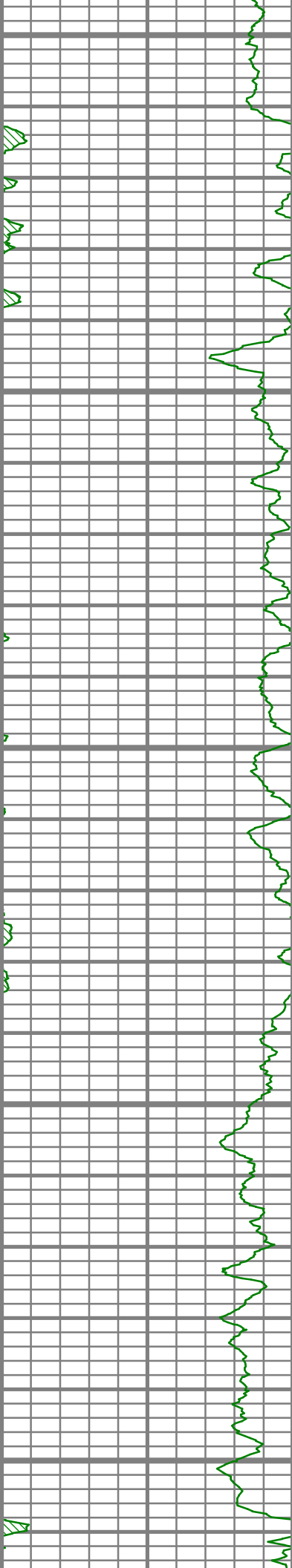
S: 81 MD: 7391.00 ft  
Inc: 29.20 deg Az:  
117.63 deg TVD:  
7370.41 ft

S: 82 MD: 7423.00 ft  
Inc: 31.36 deg Az:  
118.90 deg TVD:  
7398.04 ft

S: 83 MD: 7455.00 ft  
Inc: 33.61 deg Az:  
119.10 deg TVD:  
7425.03 ft

S: 84 MD: 7486.00 ft  
Inc: 36.01 deg Az:  
119.35 deg TVD:  
7450.49 ft

S: 85 MD: 7518.00 ft  
Inc: 38.54 deg Az:  
119.44 deg TVD:  
7475.95 ft



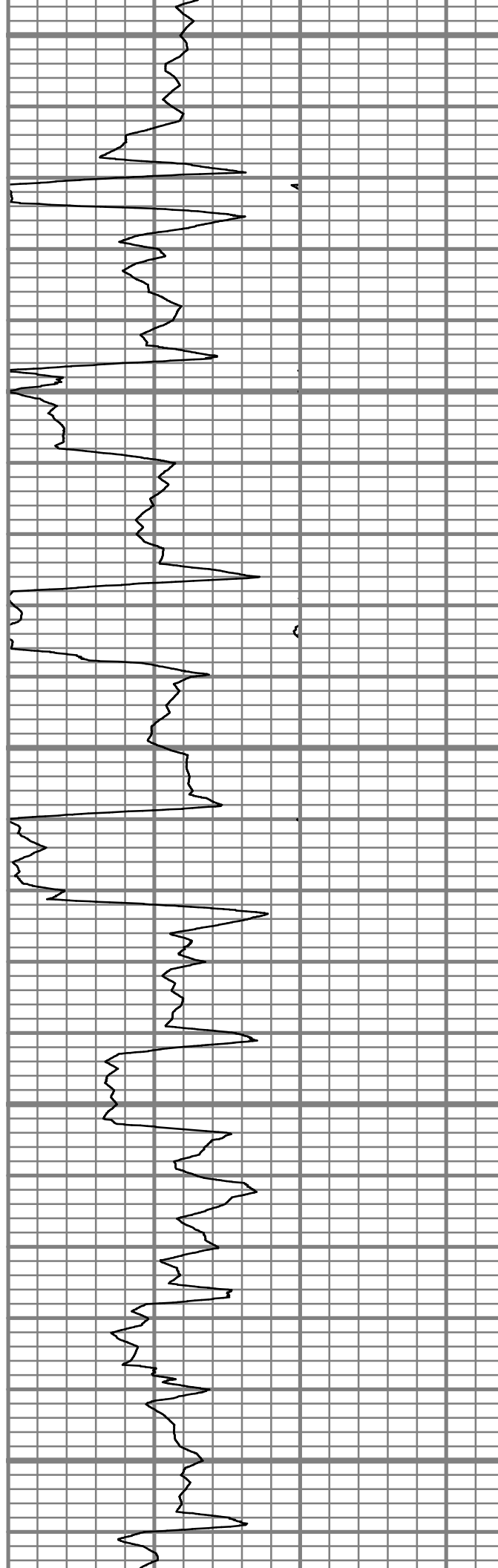
7550

7600

7650

7700

7750



S: 86 MD: 7550.00 ft  
Inc: 41.18 deg Az:  
120.07 deg TVD:  
7500.51 ft

S: 87 MD: 7582.00 ft  
Inc: 43.52 deg Az:  
120.43 deg TVD:  
7524.16 ft

S: 88 MD: 7614.00 ft  
Inc: 45.72 deg Az:  
119.91 deg TVD:  
7546.93 ft

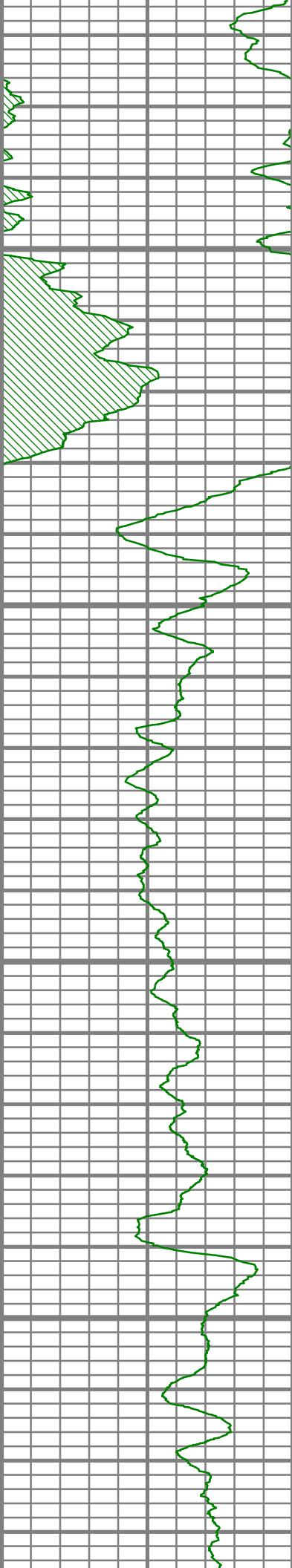
S: 89 MD: 7645.00 ft  
Inc: 47.52 deg Az:  
119.58 deg TVD:  
7568.22 ft

S: 90 MD: 7677.00 ft  
Inc: 49.39 deg Az:  
119.91 deg TVD:  
7589.45 ft

S: 91 MD: 7709.00 ft  
Inc: 51.22 deg Az:  
118.35 deg TVD:  
7609.88 ft

S: 92 MD: 7741.00 ft  
Inc: 53.24 deg Az:  
117.61 deg TVD:  
7629.48 ft



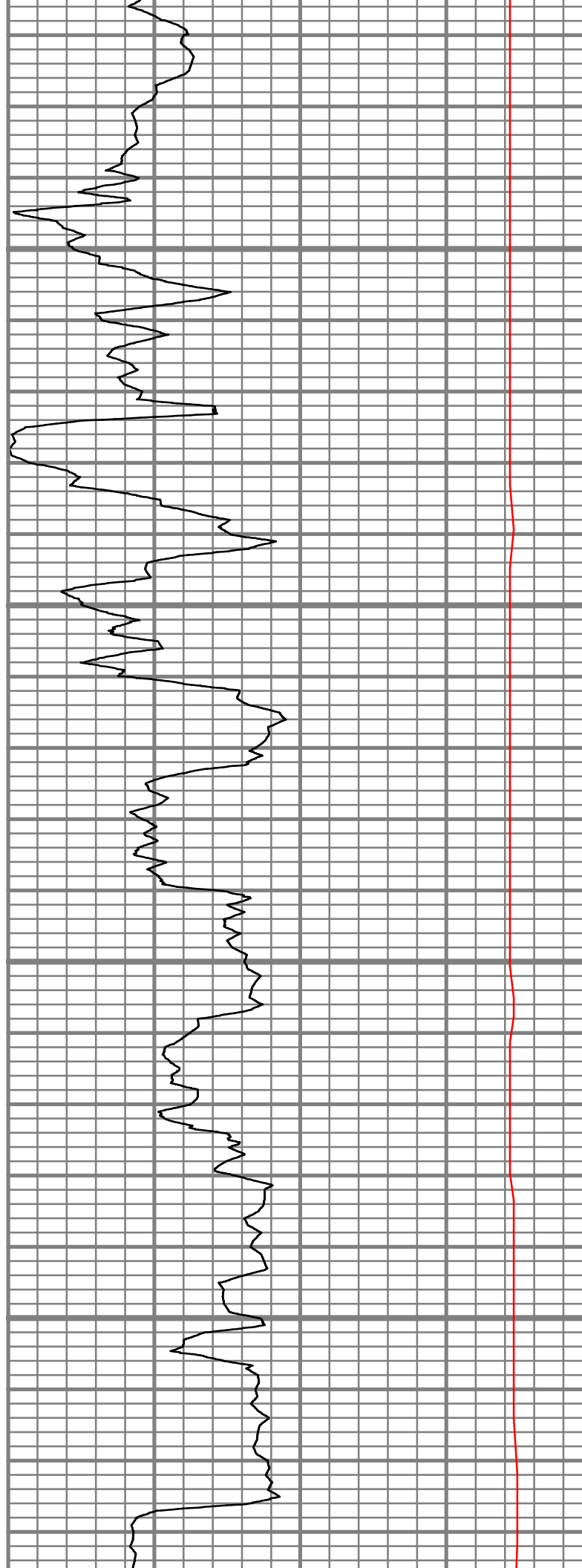


7800

7850

7900

7950



S: 93 MD: 7773.00 ft  
Inc: 55.47 deg Az:  
117.90 deg TVD:  
7648.13 ft

S: 94 MD: 7804.00 ft  
Inc: 57.56 deg Az:  
117.97 deg TVD:  
7665.23 ft

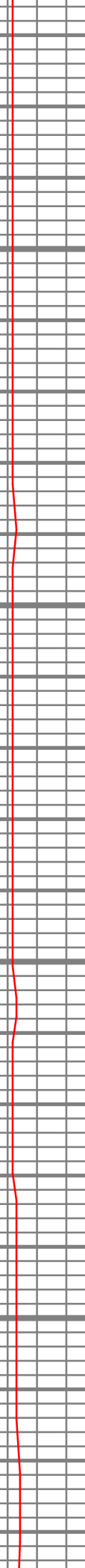
S: 95 MD: 7836.00 ft  
Inc: 59.48 deg Az:  
118.88 deg TVD:  
7681.94 ft

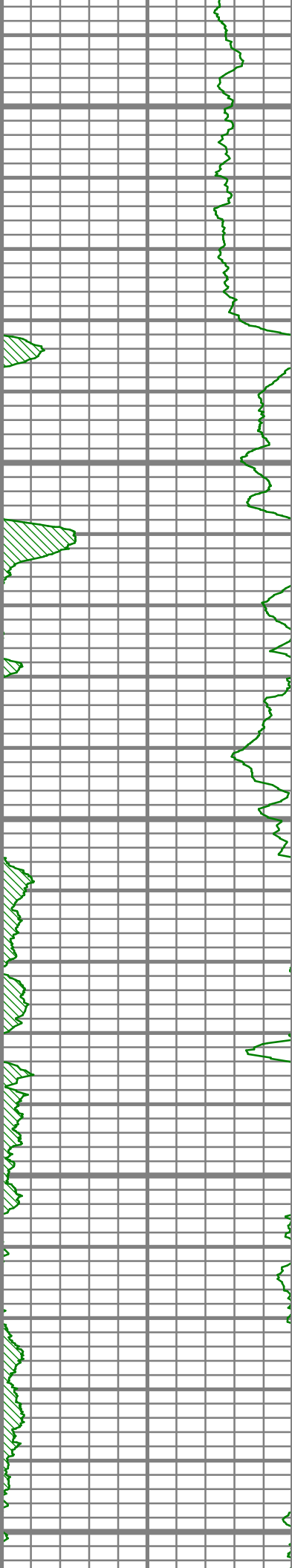
S: 96 MD: 7868.00 ft  
Inc: 60.58 deg Az:  
119.05 deg TVD:  
7697.93 ft

S: 97 MD: 7900.00 ft  
Inc: 61.50 deg Az:  
120.02 deg TVD:  
7713.42 ft

S: 98 MD: 7932.00 ft  
Inc: 63.39 deg Az:  
119.94 deg TVD:  
7728.22 ft

S: 99 MD: 7963.00 ft  
Inc: 66.03 deg Az:  
120.59 deg TVD:  
7741.46 ft





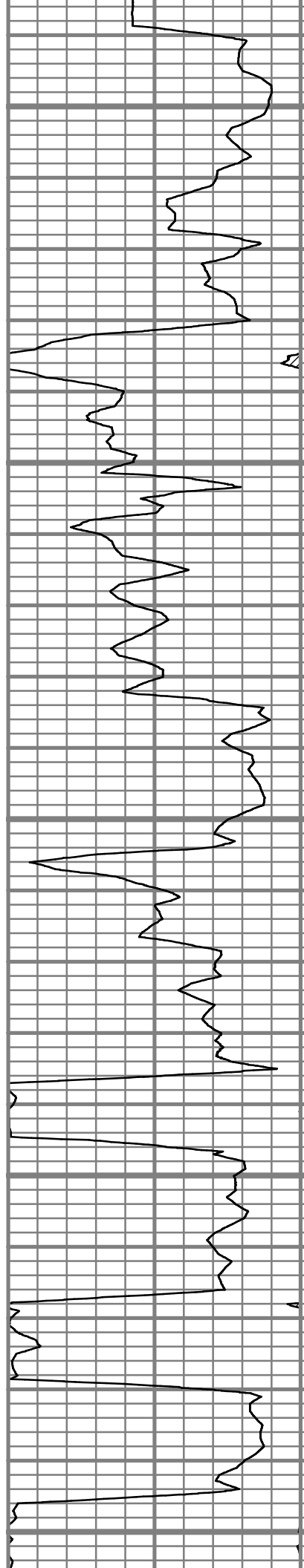
8000

8050

8100

8150

8200



S: 100 MD: 7995.00 ft  
Inc: 68.26 deg Az:  
121.46 deg TVD:  
7753.89 ft

S: 101 MD: 8027.00 ft  
Inc: 70.34 deg Az:  
121.72 deg TVD:  
7765.20 ft

S: 102 MD: 8059.00 ft  
Inc: 71.16 deg Az:  
122.02 deg TVD:  
7775.75 ft

S: 103 MD: 8091.00 ft  
Inc: 71.60 deg Az:  
123.50 deg TVD:  
7785.97 ft

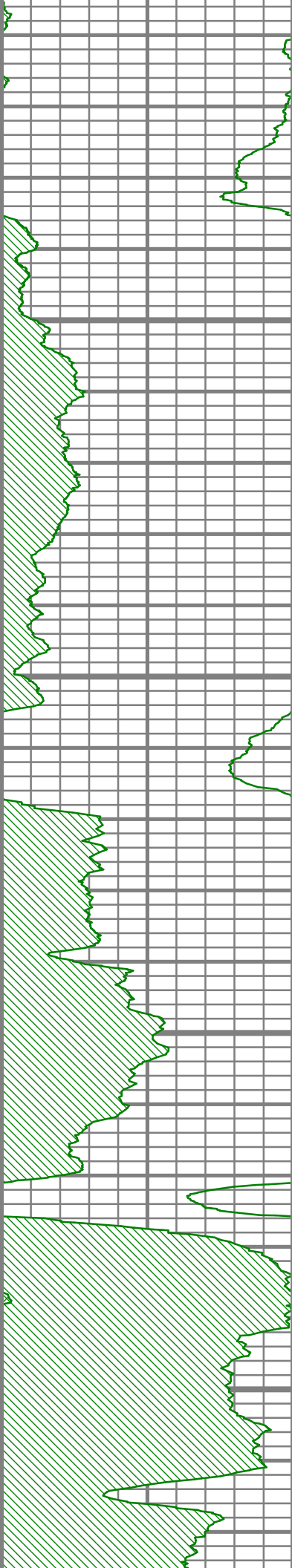
S: 104 MD: 8123.00 ft  
Inc: 72.34 deg Az:  
126.48 deg TVD:  
7795.88 ft

S: 105 MD: 8155.00 ft  
Inc: 73.12 deg Az:  
128.95 deg TVD:  
7805.38 ft

S: 106 MD: 8187.00 ft  
Inc: 74.08 deg Az:  
131.36 deg TVD:  
7814.42 ft





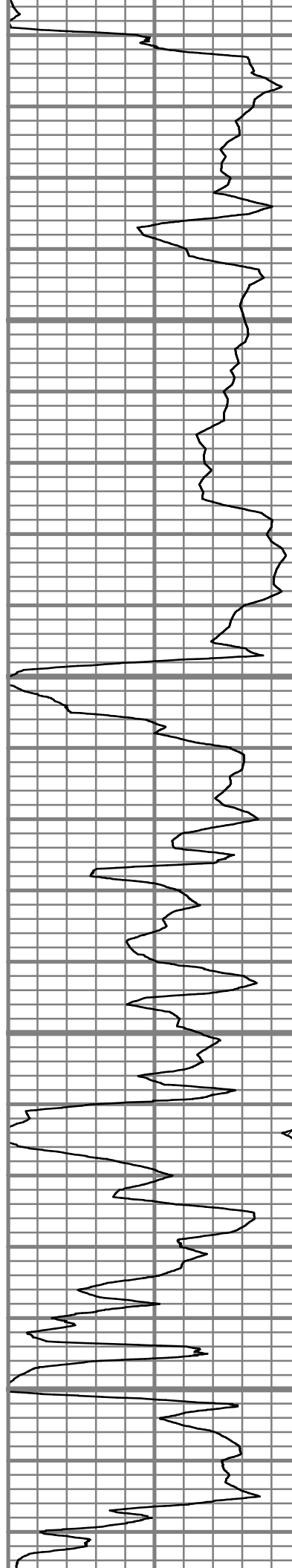


8250

8300

8350

8400



A



S: 107 MD: 8219.00 ft  
Inc: 75.47 deg Az:  
133.74 deg TVD:  
7822.82 ft

S: 108 MD: 8250.00 ft  
Inc: 77.62 deg Az:  
137.15 deg TVD:  
7830.04 ft

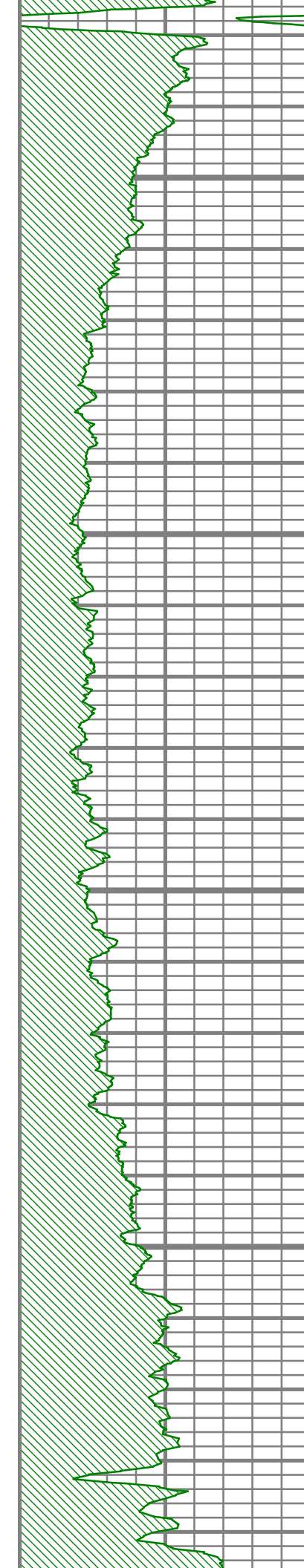
S: 109 MD: 8282.00 ft  
Inc: 79.57 deg Az:  
140.03 deg TVD:  
7836.37 ft

S: 110 MD: 8314.00 ft  
Inc: 80.55 deg Az:  
142.16 deg TVD:  
7841.90 ft

S: 111 MD: 8346.00 ft  
Inc: 81.48 deg Az:  
144.71 deg TVD:  
7846.89 ft

S: 112 MD: 8378.00 ft  
Inc: 83.25 deg Az:  
146.63 deg TVD:  
7851.15 ft

S: 113 MD: 8410.00 ft  
Inc: 86.01 deg Az:  
147.87 deg TVD:  
7854.14 ft

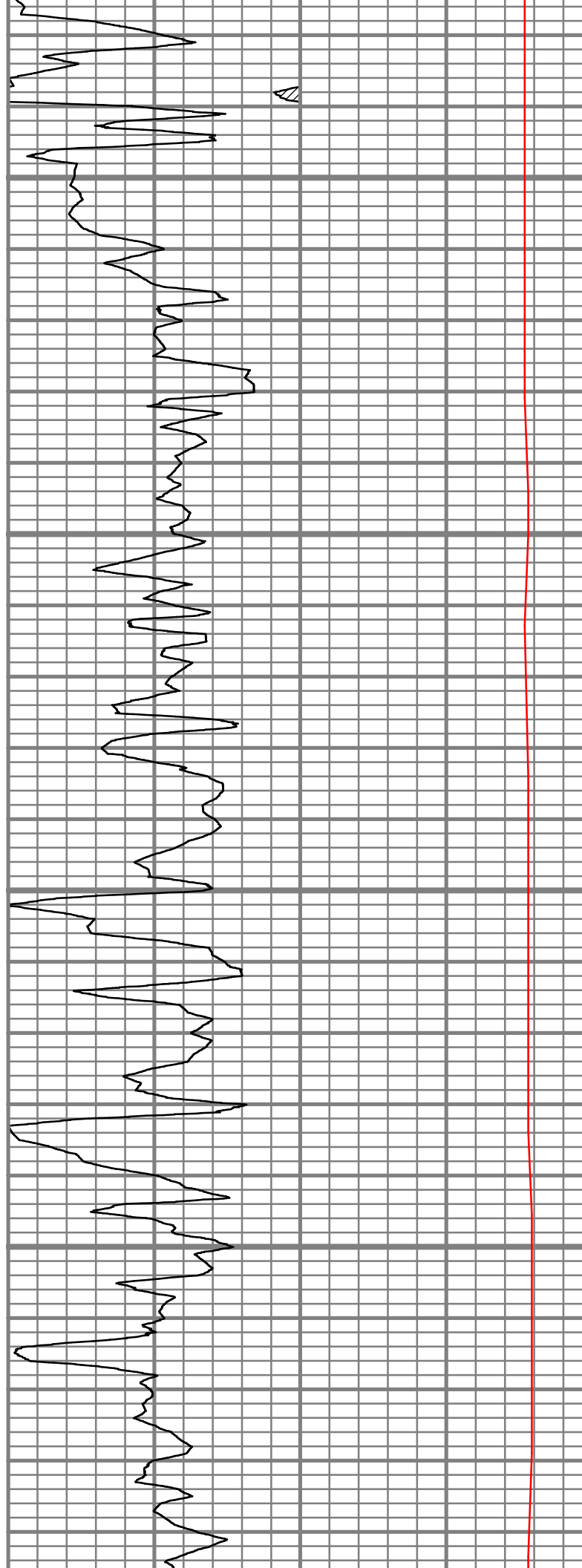


8450

8500

8550

8600



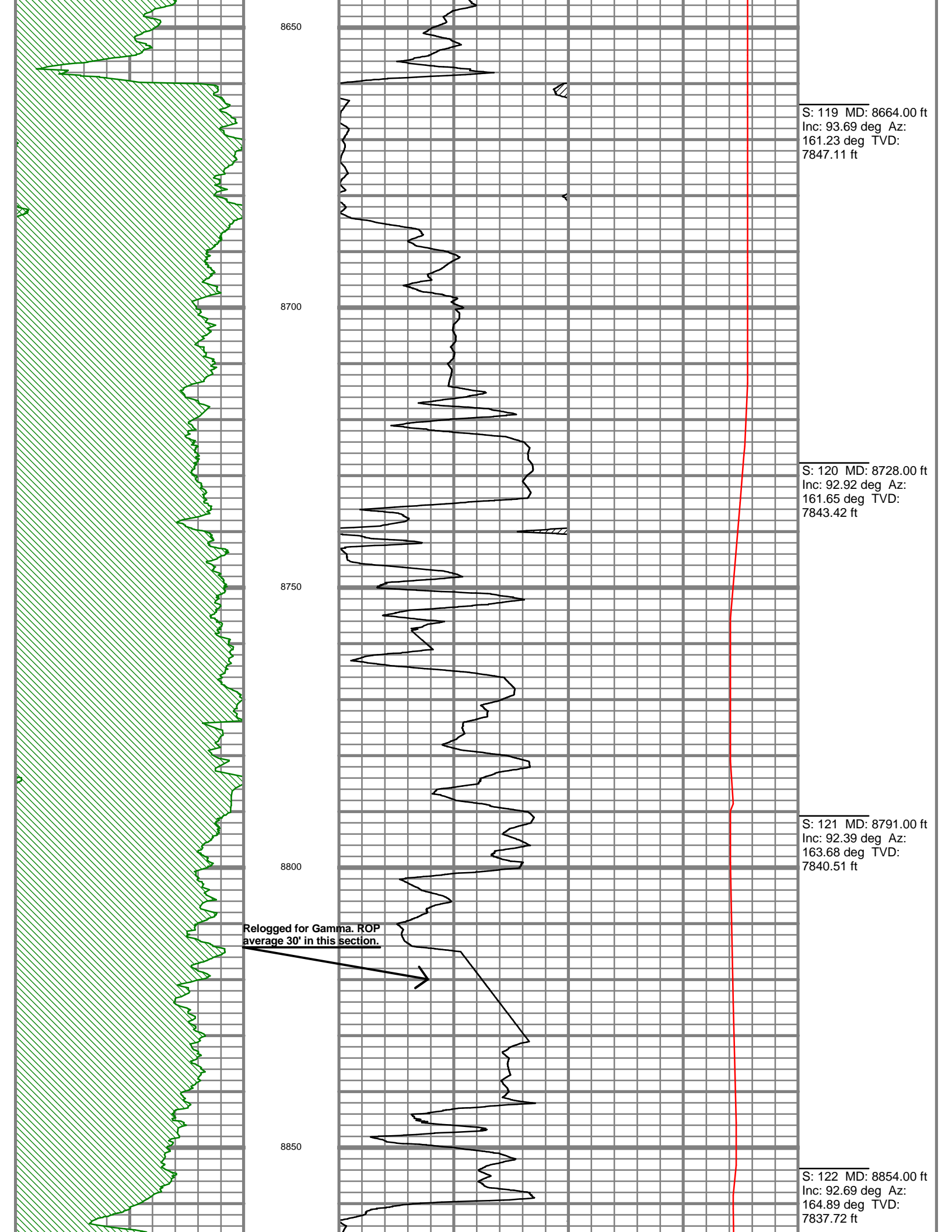
S: 114 MD: 8442.00 ft  
Inc: 88.96 deg Az:  
149.04 deg TVD:  
7855.55 ft

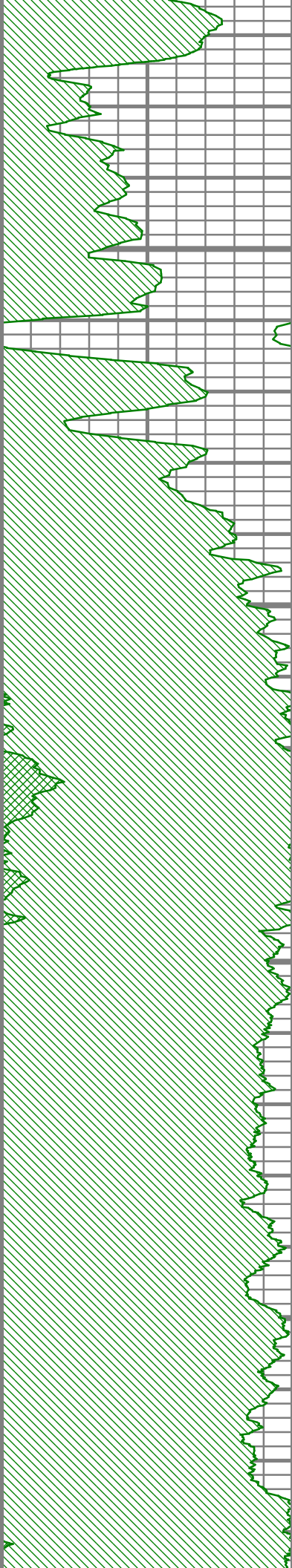
S: 115 MD: 8473.00 ft  
Inc: 89.87 deg Az:  
149.86 deg TVD:  
7855.87 ft

S: 116 MD: 8505.00 ft  
Inc: 91.75 deg Az:  
153.12 deg TVD:  
7855.42 ft

S: 117 MD: 8537.00 ft  
Inc: 92.72 deg Az:  
155.96 deg TVD:  
7854.17 ft

S: 118 MD: 8600.00 ft  
Inc: 93.16 deg Az:  
160.76 deg TVD:  
7850.94 ft



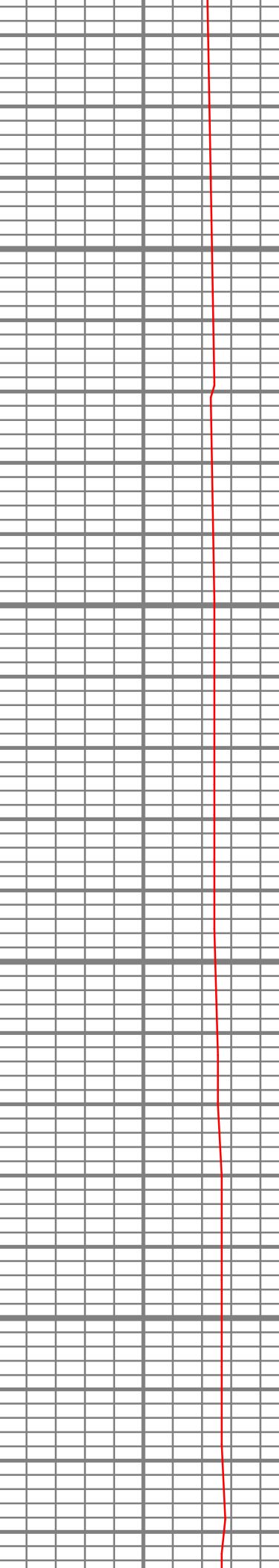
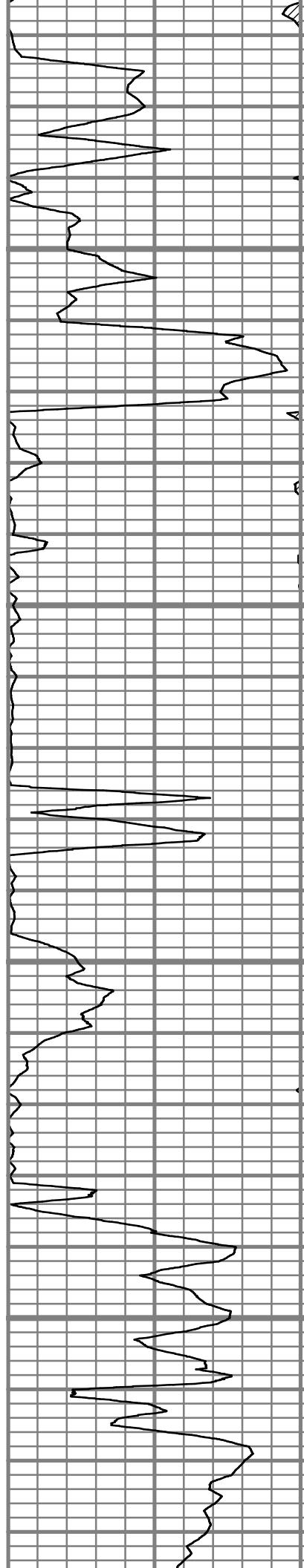


8900

8950

9000

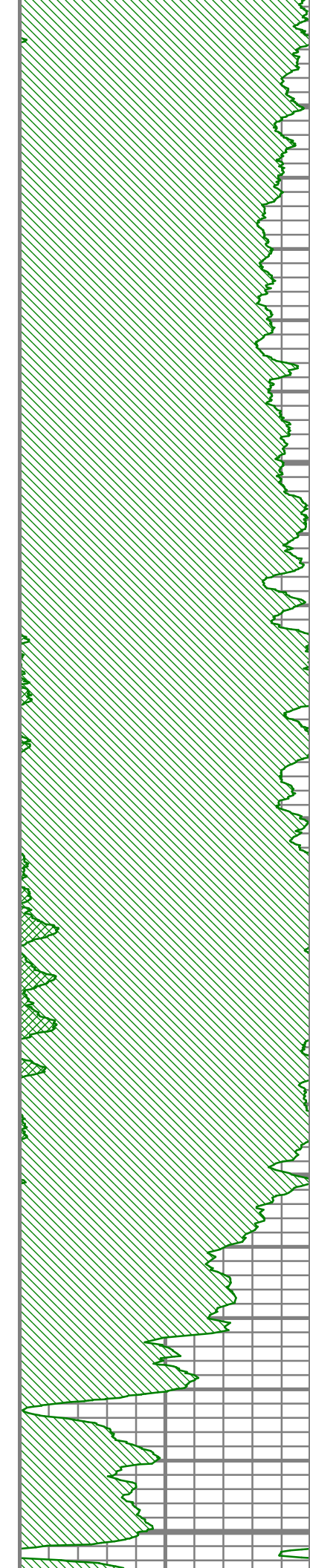
9050



S: 123 MD: 8918.00 ft  
Inc: 90.47 deg Az:  
164.13 deg TVD:  
7835.96 ft

S: 124 MD: 8982.00 ft  
Inc: 90.44 deg Az:  
164.25 deg TVD:  
7835.45 ft

S: 125 MD: 9046.00 ft  
Inc: 90.77 deg Az:  
166.44 deg TVD:  
7834.78 ft



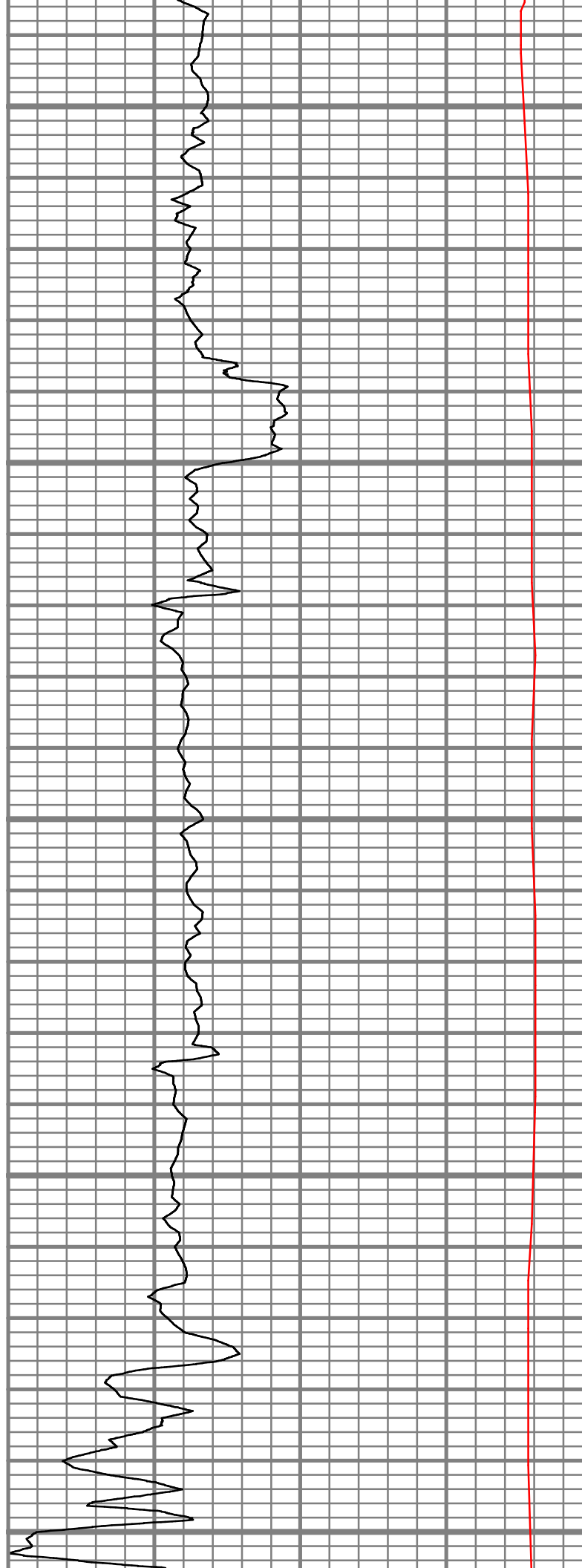
9100

9150

9200

9250

9300



S: 126 MD: 9110.00 ft  
Inc: 91.28 deg Az:  
167.66 deg TVD:  
7833.63 ft

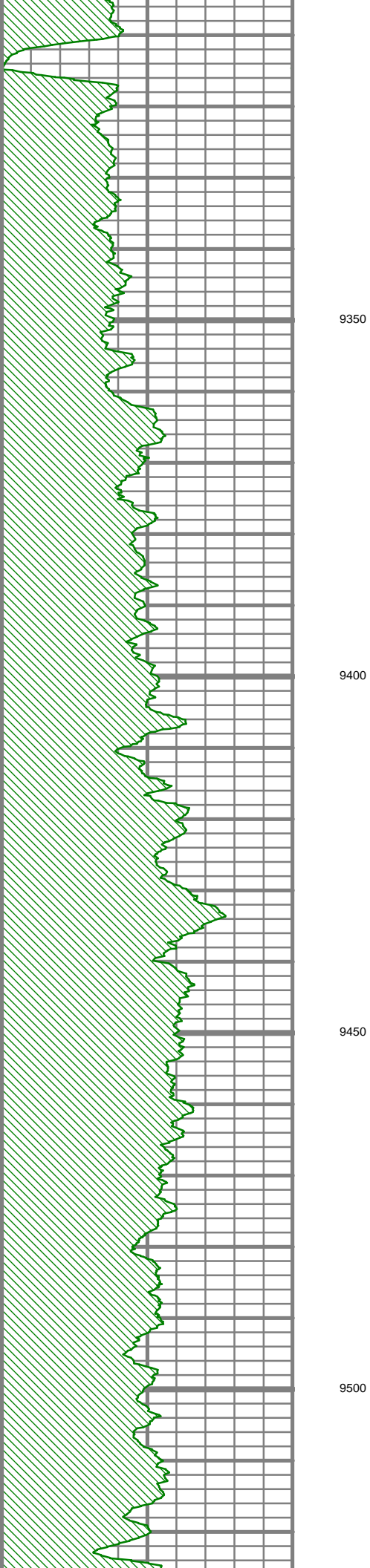
S: 127 MD: 9173.00 ft  
Inc: 92.59 deg Az:  
168.58 deg TVD:  
7831.51 ft

S: 128 MD: 9236.00 ft  
Inc: 93.49 deg Az:  
168.18 deg TVD:  
7828.17 ft

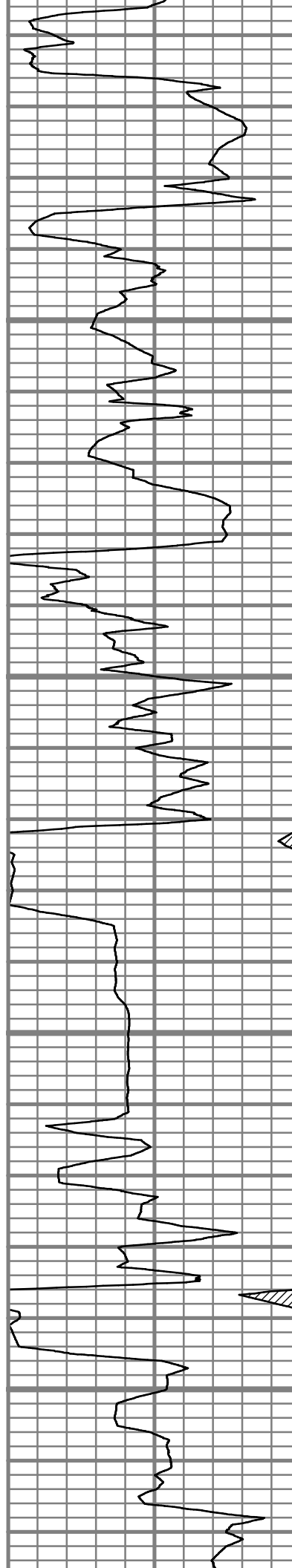
S: 129 MD: 9300.00 ft  
Inc: 93.33 deg Az:



168.03 deg TVD:  
7824.37 ft



9350



S: 130 MD: 9363.00 ft  
Inc: 92.55 deg Az:  
169.60 deg TVD:  
7821.14 ft

9400

S: 131 MD: 9426.00 ft  
Inc: 92.92 deg Az:  
169.61 deg TVD:  
7818.14 ft

9450

S: 132 MD: 9458.00 ft  
Inc: 93.09 deg Az:  
169.65 deg TVD:  
7816.46 ft

9500

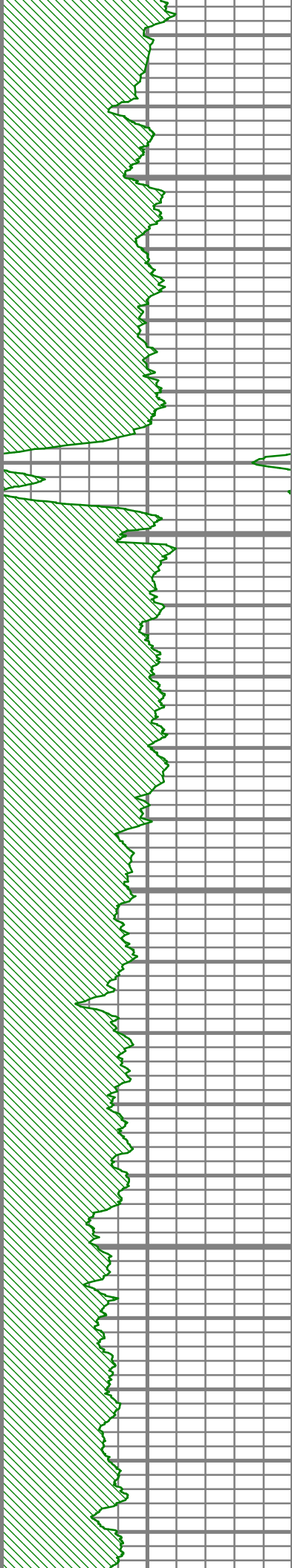
S: 133 MD: 9522.00 ft

Inc: 91.91 deg Az:  
170.42 deg TVD:  
7813.67 ft

S: 134 MD: 9586.00 ft  
Inc: 91.58 deg Az:  
172.05 deg TVD:  
7811.72 ft

S: 135 MD: 9618.00 ft  
Inc: 92.01 deg Az:  
171.87 deg TVD:  
7810.72 ft

S: 136 MD: 9682.00 ft  
Inc: 92.08 deg Az:  
171.45 deg TVD:  
7808.43 ft

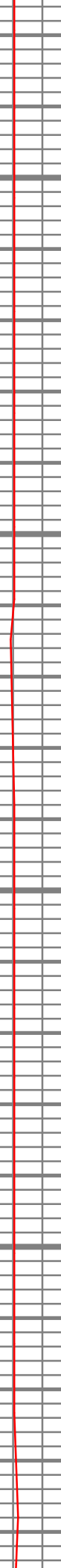
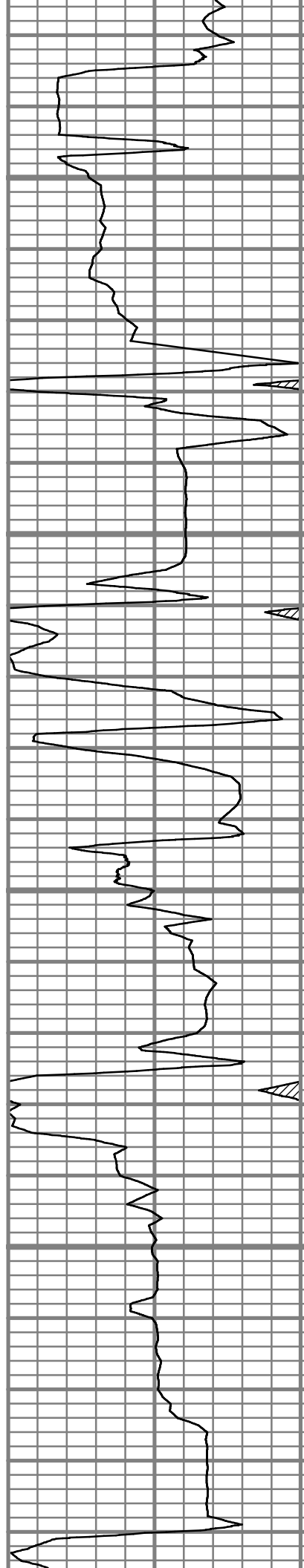


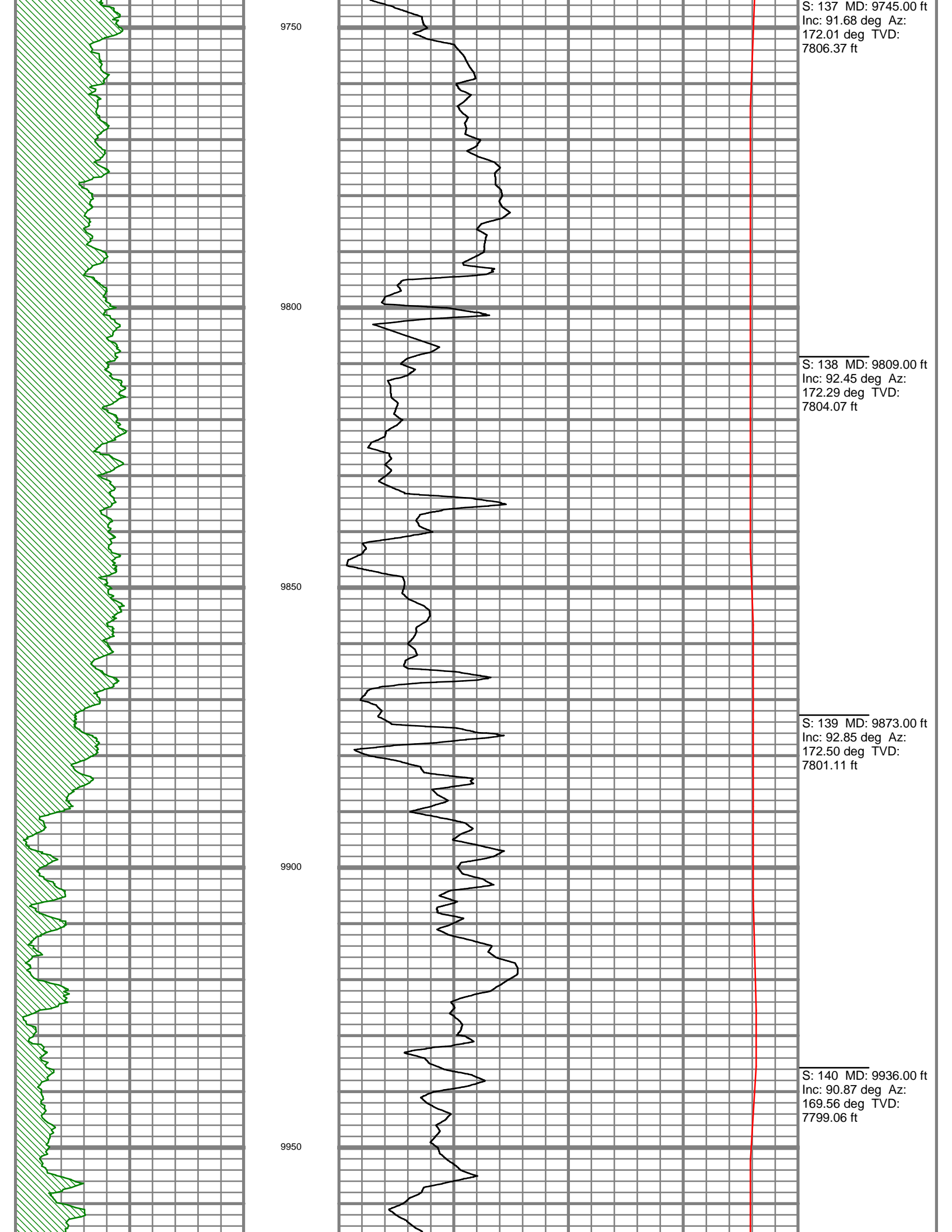
9550

9600

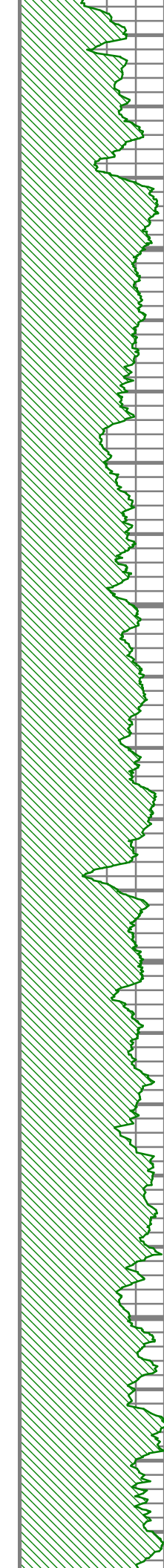
9650

9700







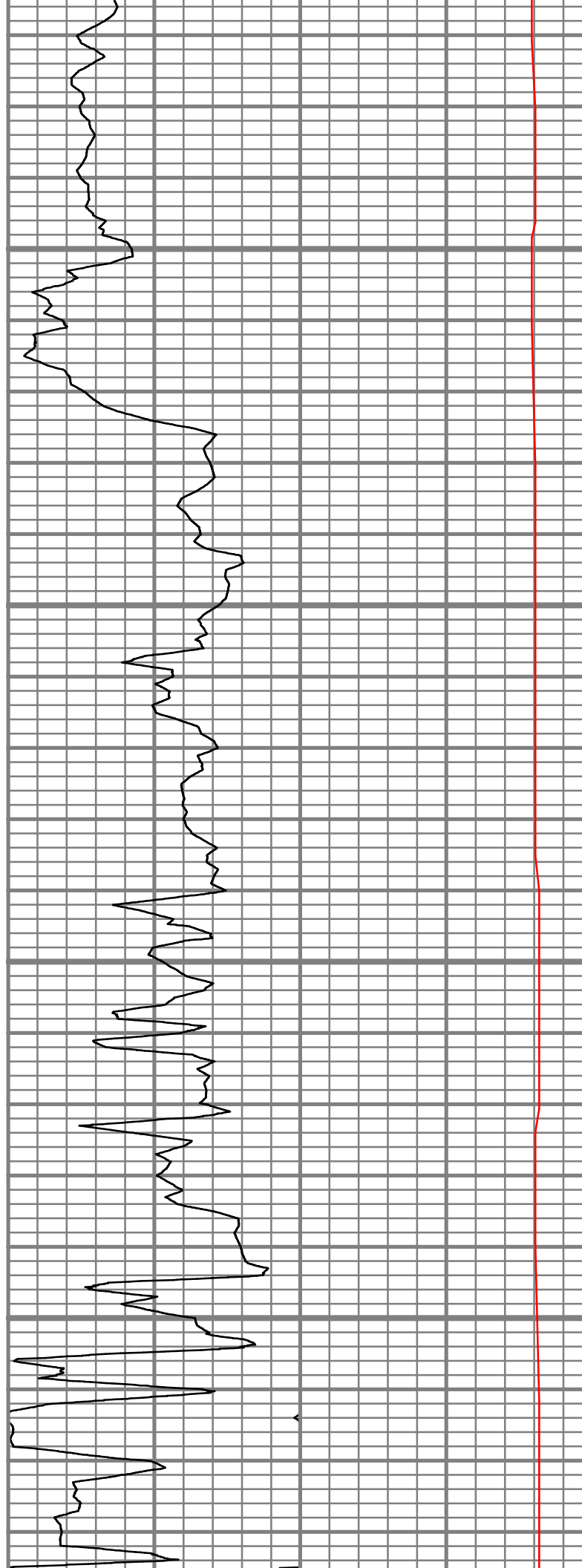


10000

10050

10100

10150

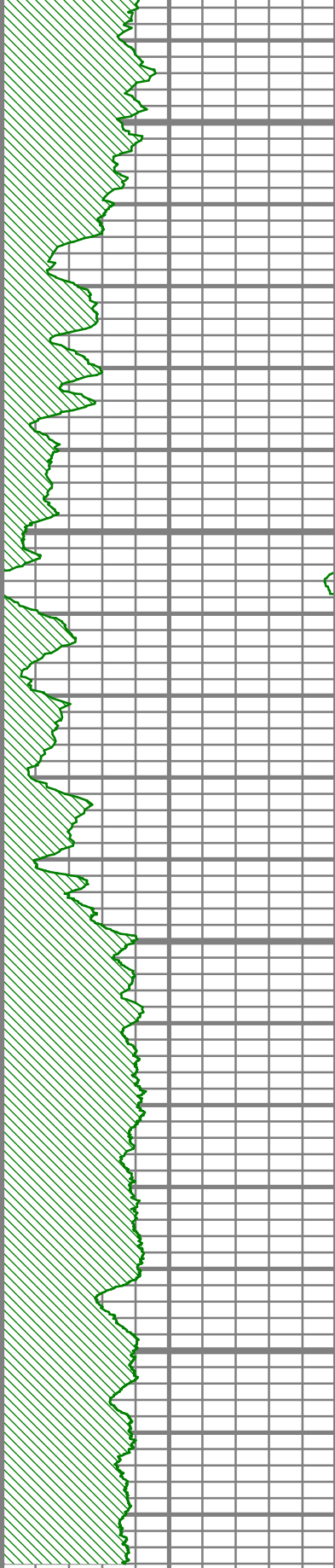


S: 141 MD: 10000.00 ft  
Inc: 89.93 deg Az:  
169.09 deg TVD:  
7798.61 ft

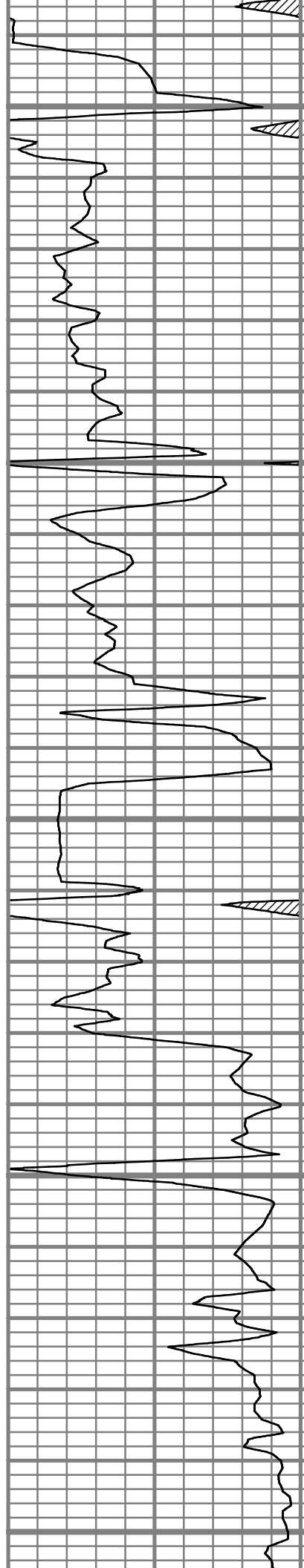
S: 142 MD: 10063.00 ft  
Inc: 90.67 deg Az:  
168.77 deg TVD:  
7798.28 ft

S: 143 MD: 10127.00 ft  
Inc: 91.85 deg Az:  
168.90 deg TVD:  
7796.87 ft





10200  
10250  
10300  
10350  
10400



S: 144 MD: 10190.00 ft  
Inc: 92.25 deg Az:  
168.65 deg TVD:  
7794.62 ft

S: 145 MD: 10254.00 ft  
Inc: 90.94 deg Az:  
167.39 deg TVD:  
7792.84 ft

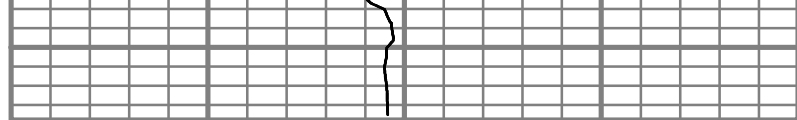
S: 146 MD: 10318.00 ft  
Inc: 89.23 deg Az:  
166.56 deg TVD:  
7792.75 ft

S: 147 MD: 10362.00 ft  
Inc: 89.77 deg Az:  
166.43 deg TVD:  
7793.13 ft



Gamma Ray (GR)		
200	Unit = aapi	400

MEASURED DEPTH  
1,240 (ft)



Rate of Penetration (ROP)		Tool Temperature (T-TEMP)		Comments
150	Unit = ft/hr	0	Unit = degF	



ROP  
TEMPERATURE  
SURVEYS  
5" = 100'  
  
FEET MD