



GEOSEARCH LOGGING INC.

Scale 1:240 (5"=100') Imperial
Measured Depth Log

Well Name: ZOGOL A 2H
Location: Marion Co., West Virginia
License Number: 47-49-02146
Spud Date: 3/27/2011
Surface Coordinates: Lat: 39.4858206
Long:-80.3492718
Bottom Hole Coordinates: Lat: 39.486022
Long: -80.338711
Ground Elevation (ft): 1,233'
Logged Interval (ft): 2,991 To: 10,477'
Formation: Marcellus
Type of Drilling Fluid: Oil-based mud

Region: APPALACHIA
Drilling Completed: 4/10/2011

K.B. Elevation (ft): 1,249'
Total Depth (ft): 10,477'

Printed by HORIZONTAL.LOG from WellSight Systems 1-800-447-1534 www.WellSight.com

OPERATOR

Company: XTO ENERGY
Address: 810 Houston St.,
Suite 2000
Fort Worth, TX 76102-6298

GEOLOGIST

Name: Kelley Hartley & Derwin Cromer
Company: Geosearch Logging, Inc.
Address: P.O. Box 6005
Edmond, OK 73083-6005
(405) 340-5545

Comments

2 Manned Logging Service
Start Logging Date: 3/31/2011
OBM on 4/5/2011
Released Logging Date: 4/10/2011
Drilling Contractor: UDI#209
PC194, I-Ball: 184,HASP: H-32

ROCK TYPES

	Anhy
	Bent
	Brec
	Cht
	Clyst
	Coal

	Congl
	Dol
	Gyp
	Igne
	Lmst
	Meta

	Mrlst
	Salt
	Shale
	Shcol
	Shgy
	Sltst

	Ss
	Till
	Sandstn
	Siltstn
	Granwash
	Dolowash

	Granite
	Cement
	Hotshale

ACCESSORIES

MINERAL

	Anhy
	Arggrn
	Arg
	Bent
	Bit
	Brecfrag
	Calc
	Carb
	Chtdk
	Chtlt
	Dol
	Feldspar
	Ferrpel
	Ferr
	Glau

	Gyp
	Hvymin
	Kaol
	Marl
	Minxl
	Nodule
	Phos
	Pyr
	Salt
	Sandy
	Silt
	Sil
	Sulphur
	Tuff

FOSSIL

	Algae
	Amph
	Belm
	Bioclst
	Brach
	Bryozoa
	Cephal
	Coral
	Crin
	Echin
	Fish
	Foram
	Fossil
	Gastro
	Oolite

	Ostra
	Pelec
	Pellet
	Pisolite
	Plant
	Strom

	Sltstrg
	Ssstrg

STRINGER

	Anhy
	Arg
	Bent
	Coal
	Dol
	Gyp
	Ls
	Mrst

TEXTURE

	Boundst
	Chalky
	Cryxln
	Earthy
	Finexln
	Grainst
	Lithogr
	Microxln
	Mudst
	Packst
	Wackst

OTHER SYMBOLS

POROSITY TYPE

	Earthy
	Fenest
	Fracture
	Inter
	Moldic
	Organic
	Pinpoint

	Vuggy
--	-------

SORTING

	Well
	Moderate
	Poor

ROUNDING

	Rounded
	Subrnd
	Subang
	Angular

OIL SHOWS

	Even
--	------

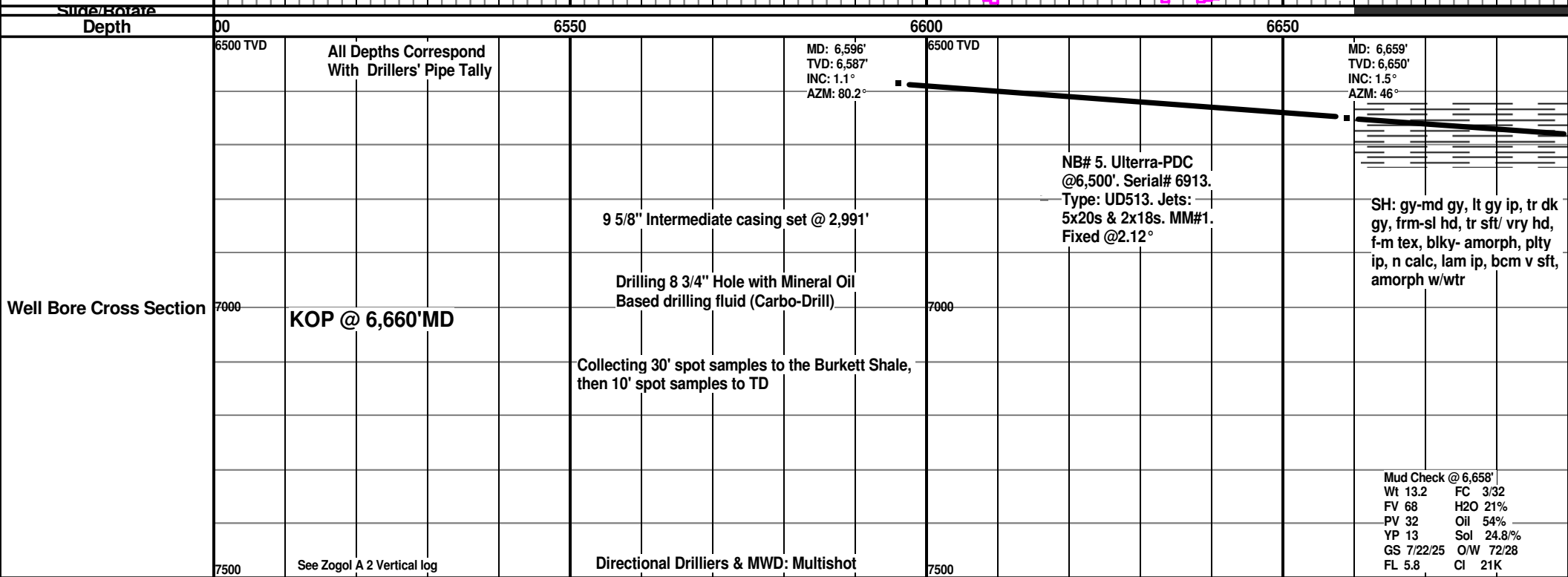
	Spotted
	Ques
	Dead
	poor
	fair
	good
	excelent

INTERVALS

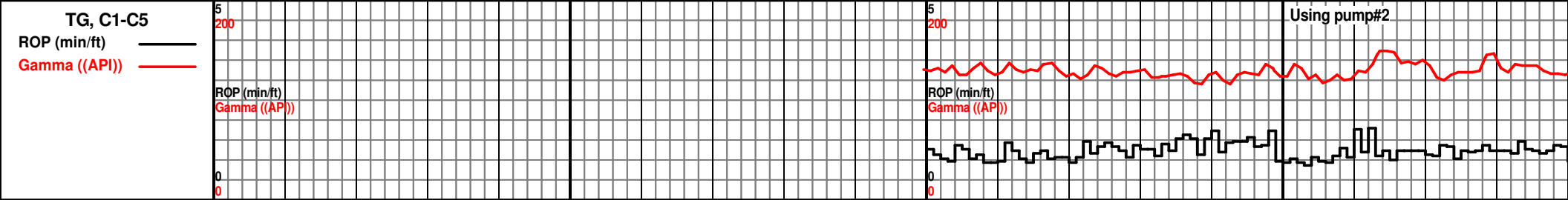
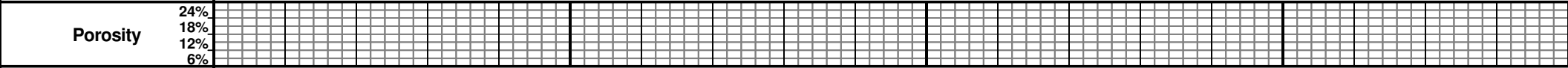
	Core
	Dst

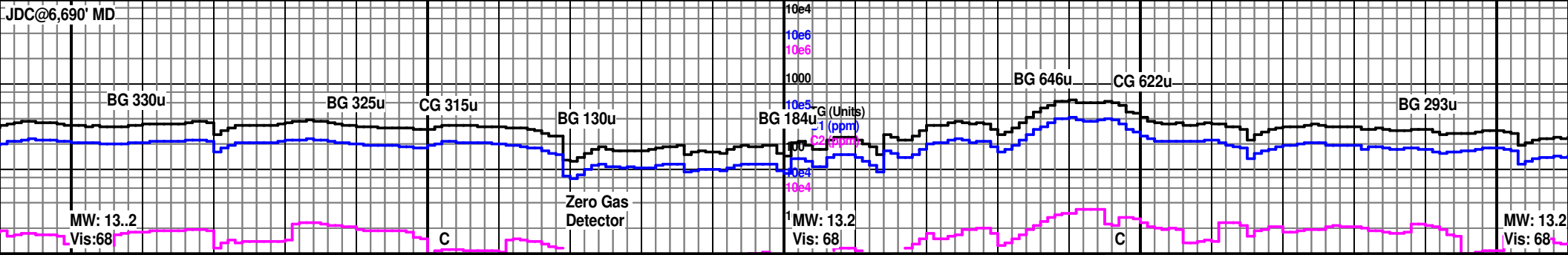
EVENTS

	Rft
	Sidewall

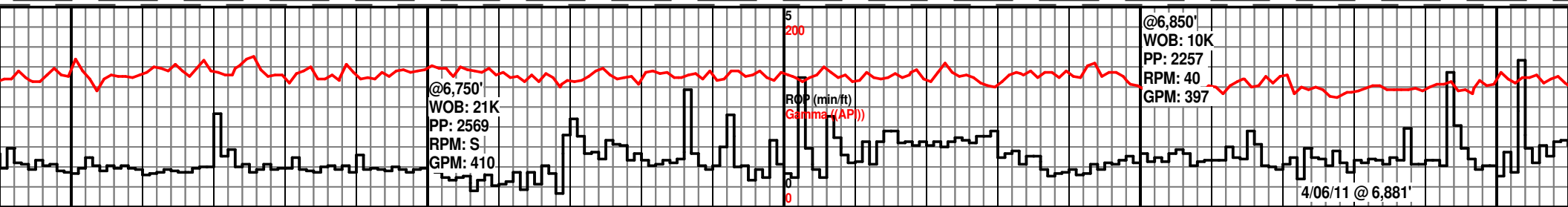
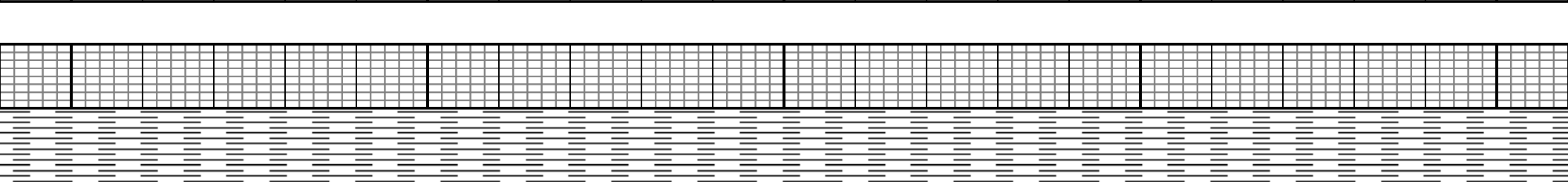


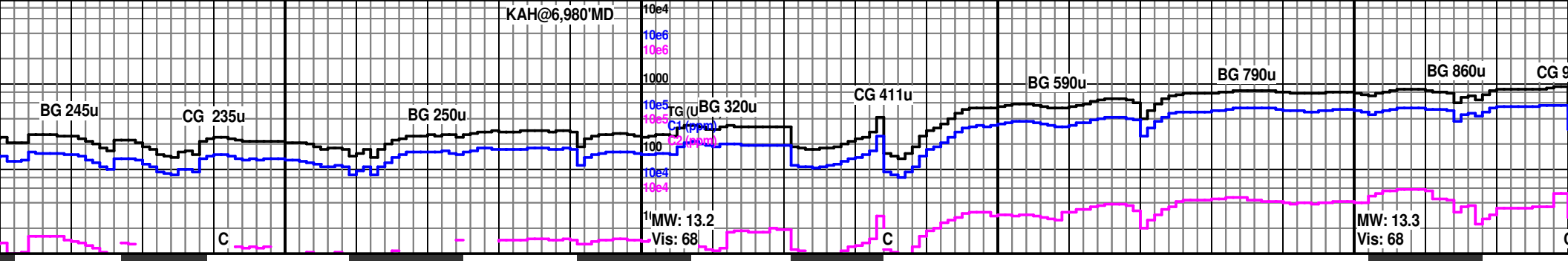
Oil Shows



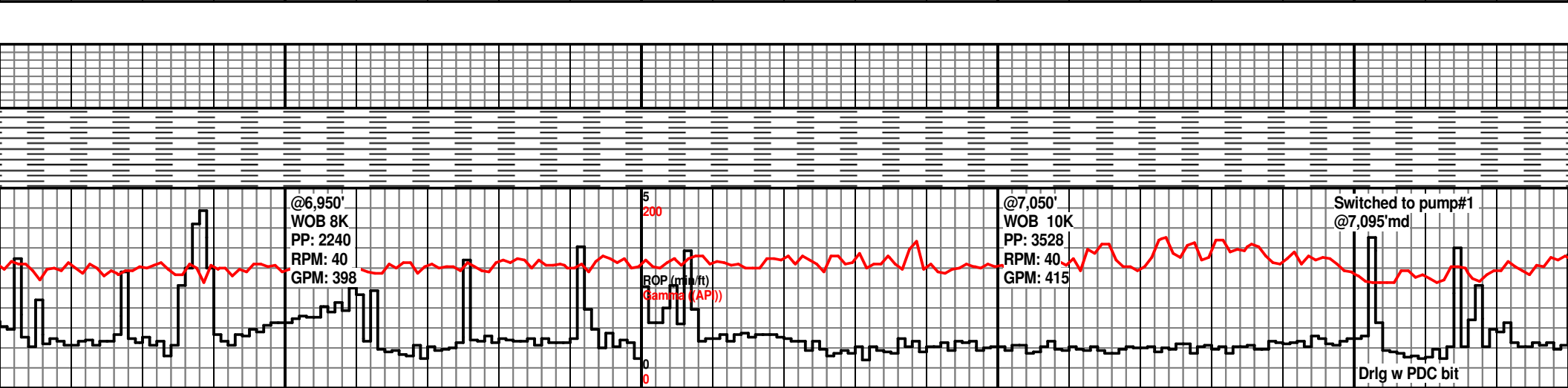


6700		6750		6800		6850		6900																			
MD: 6,691'	TVD: 6,682'	INC: 5.2°	AZM: 31.2°	MD: 6,722'	TVD: 6,713.49'	INC: 9.7°	AZM: 30.6°	MD: 6,754'	TVD: 6,744.88'	INC: 12.7°	AZM: 34.1°	MD: 6,786'	TVD: 6,775.94'	INC: 15.2°	AZM: 39.8°	MD: 6,817'	TVD: 6,805.66'	INC: 17.8°	AZM: 41.7°	MD: 6,848'	TVD: 6,835.01'	INC: 19.7°	AZM: 40.5°	MD: 6,880'	TVD: 6,864.92'	INC: 21.9°	AZM: 38.6°
SH: dk gy, occ blk, f tex, frm, non calc, predom plty, sme sub blk, f lam ip, scat micromic, sme lam pyr, trc SLTSTN		SH: dk gy, occ blk, f tex, frm, occ mod hd, non calc, plty, sme sub blk, f lam ip, scat micromic		SH: med-dk gy, occ blk, f tex, predom frm, sme mod hd, non calc, plty-sub blk, occ splnty, f lam ip, sme micromic, sme slty		SH: predom dk gy, sme med gy, occ blk, f tex, frm, sme mod hd, non calc, f lam ip, plty-sub blk, micromic, occ slty		SH: med-dk gy, occ blk, f tex, sft-frm, occ mod hd, non calc, f lam ip, predom plty, sme sub blk, scat micromic		SH: dk gy thruout, occ blk, f tex, predom sft-frm, sme mod hd, non calc, f lam ip, mstly plty, sme sub blk, scat micromic		SH: predom dk gy, occ blk, f tex, sft-frm, mstly plty, sme sub blk, scat micromic		SH: predom dk gy, occ blk, f tex, sft-frm, mstly plty, sme sub blk, scat micromic		SH: predom dk gy, occ blk, f tex, sft-frm, mstly plty, sme sub blk, scat micromic		SH: predom dk gy, occ blk, f tex, sft-frm, mstly plty, sme sub blk, scat micromic		SH: predom dk gy, occ blk, f tex, sft-frm, mstly plty, sme sub blk, scat micromic		SH: predom dk gy, occ blk, f tex, sft-frm, mstly plty, sme sub blk, scat micromic		SH: predom dk gy, occ blk, f tex, sft-frm, mstly plty, sme sub blk, scat micromic		SH: predom dk gy, occ blk, f tex, sft-frm, mstly plty, sme sub blk, scat micromic	

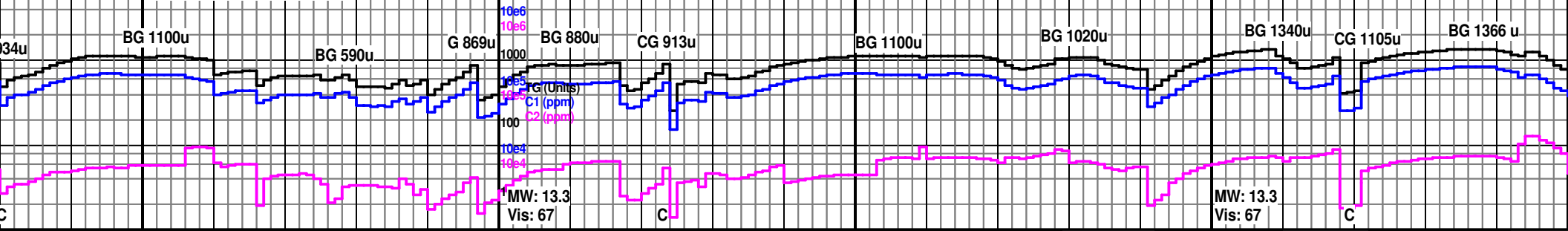




6950		7000		7050		7100	
MD: 6,911'	MD: 6,942'	MD: 6,974'	MD: 7,006'	MD: 7,039'	MD: 7,069'	MD: 7,101'	
TVD: 6,893.43'	TVD: 6,921.40'	TVD: 6,949.79'	TVD: 6,977.61'	TVD: 7,005'	TVD: 7,030'	TVD: 7,057'	
INC: 24.4°	INC: 26.6°	INC: 28.4°	INC: 30.8°	INC: 33°	INC: 33.1°	INC: 33.7°	
AZM: 37.2°	AZM: 35.9°	AZM: 35.3°	AZM: 33.5°	AZM: 33.2°	AZM: 32.5°	AZM: 32.2°	
SH: dk gy, occ blk, f tex, sft-frm, sme mod hd, non calc, f lam ip, plty-sub blk, scat micromic	SH: dk gy, occ blk, f tex, sft-frm, sme mod hd, non calc, f lam ip, plty-sub blk, scat micromic	SH: dk gy, occ blk, f tex, sft-frm, sme mod hd, non calc, f lam ip, plty-sub blk, scat micromic	SH: m gy, gy/dk gy ip, rr lt gy, f tex, amorph-blky, tr plty, frm-sl hd, tr sft/hd, n calc, f lam ip, tr fd pyr	SH: m-dk gy, gy ip, rr v dk gy-blk, f tex, amorph-blky, tr plty, frm-sl hd, sft ip, n calc, f lam ip, fd pyr ip	SH: pred dk gy, v dk gy-blk ip, f-m tex, amorph-blky, plty ip, frm-sl hd, n calc, f lam ip, fd pyr ip	SH: pred dk gy, v dk/m gy ip, tr blk, f-m tex, amorph-blky, plty ip, frm-sl hd, n calc, rr v sl calc, f lam ip, fd pyr ip, rr carb	SH: dk gy, v dk/m gy ip, tr blk, f-m tex, amorph-blky, plty ip, frm-sl hd, n calc, tr xls, f lam ip, fd pyr ip, slcarb



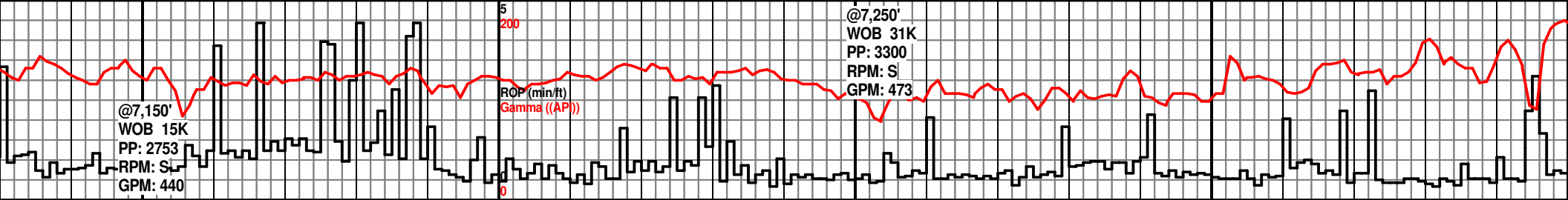
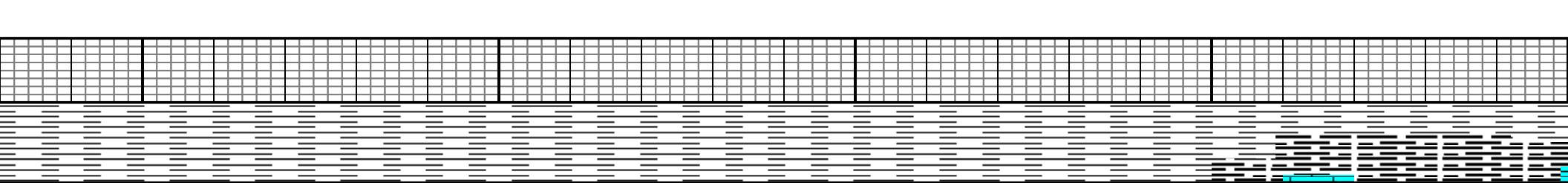
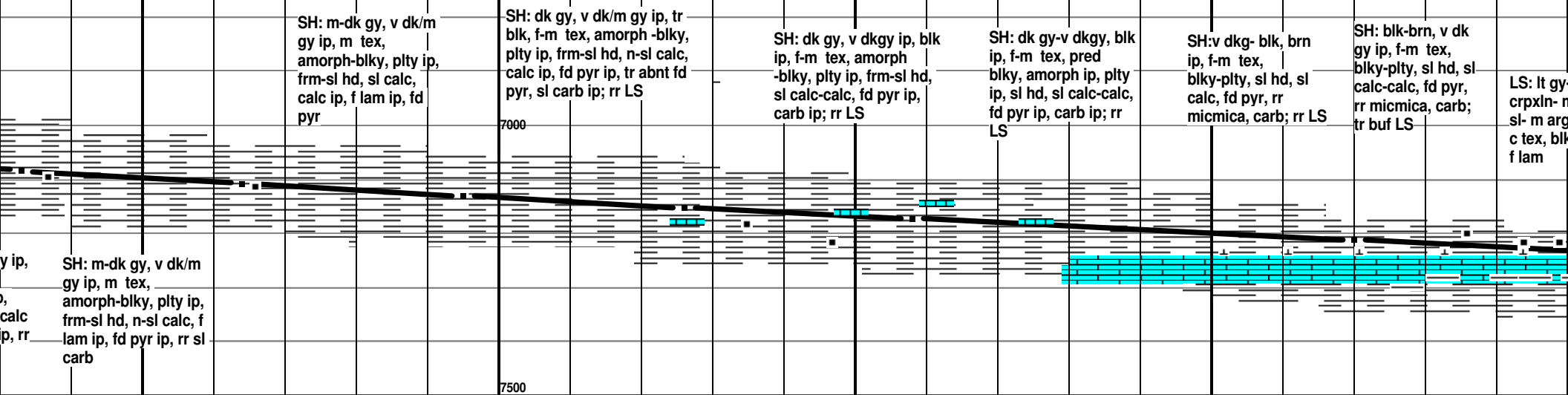
Lag time: 35.5min @7,150'md

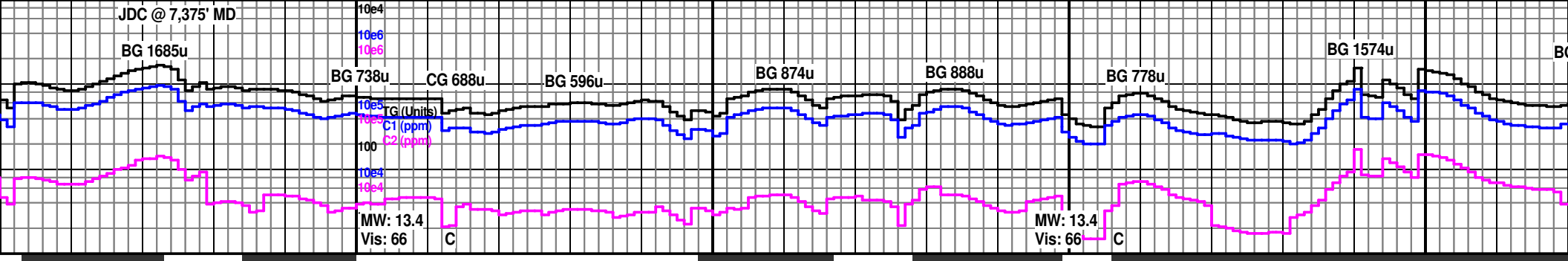


7150 7200 7250 7300 7350

MD: 7,133' TVD: 7,083' INC: 36.2° AZM: 32.3°	MD: 7,164' TVD: 7,103' INC: 40.2° AZM: 31.0°	6500 TVD MD: 7,195' TVD: 7,130' INC: 44.5° AZM: 33°	MD: 7,226' TVD: 7,152' INC: 47.7° AZM: 37.7°	MD: 7,258' TVD: 7,173' INC: 50.0° AZM: 43.2°	MD: 7,289' TVD: 7,193' INC: 51.3° AZM: 48°	MD: 7,320' TVD: 7,212' INC: 51.8° AZM: 52°
---	---	---	---	---	---	---

**TOP OF BURKETT SH
@7,302' MD / 7,202' TVD**





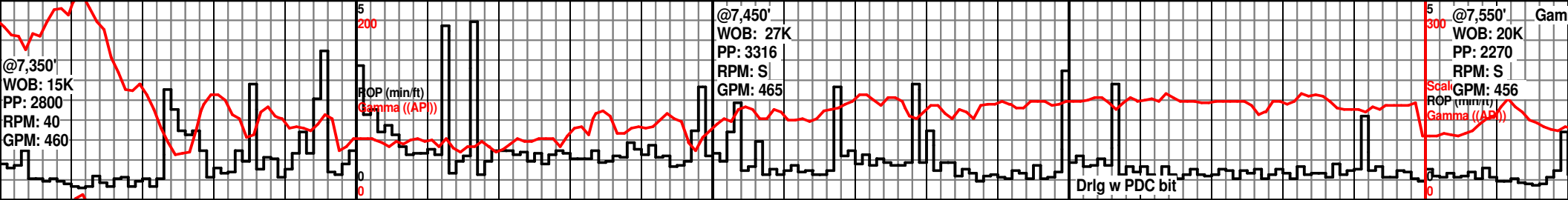
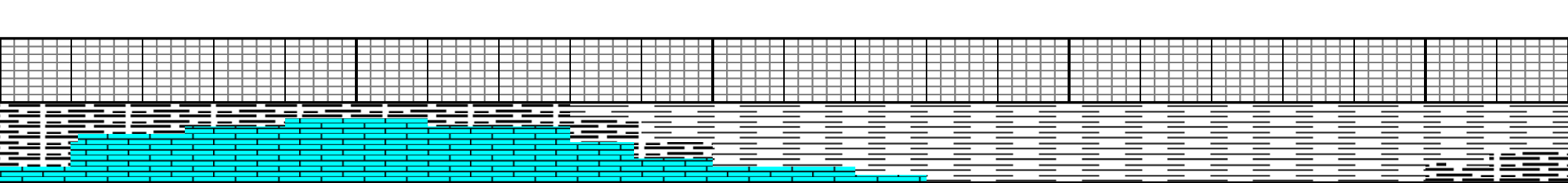
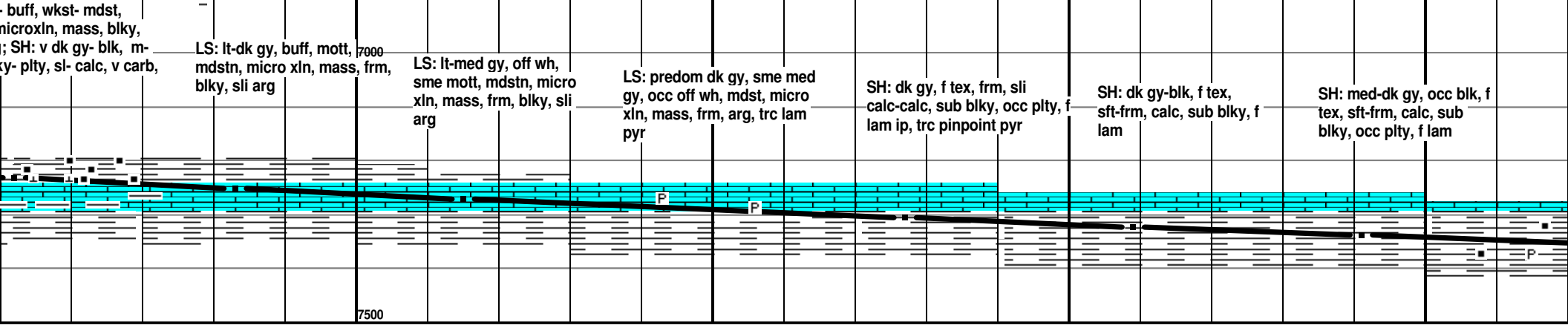
50 7400 7450 7500 7550

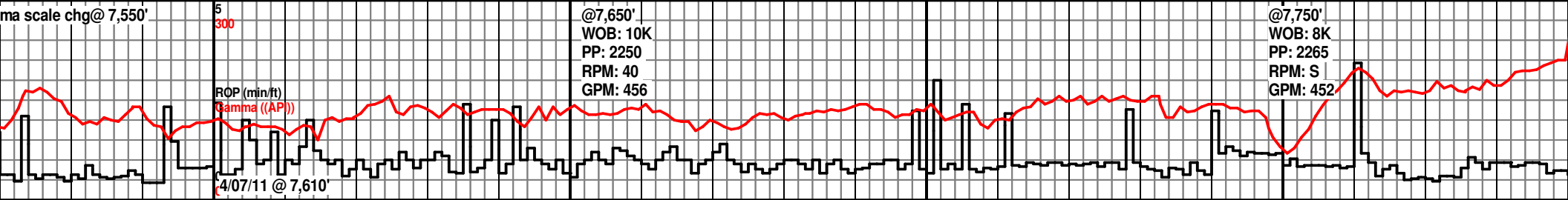
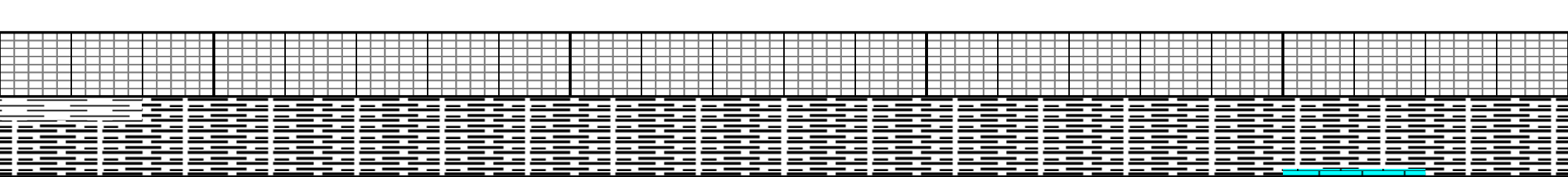
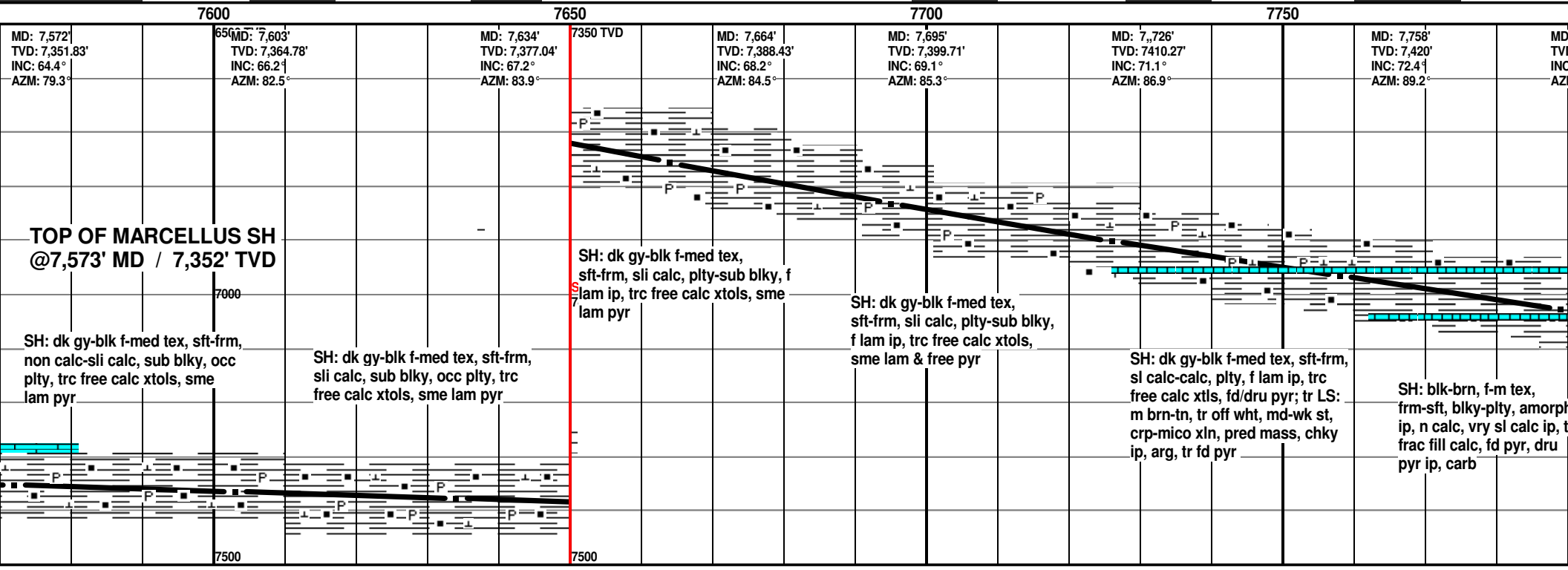
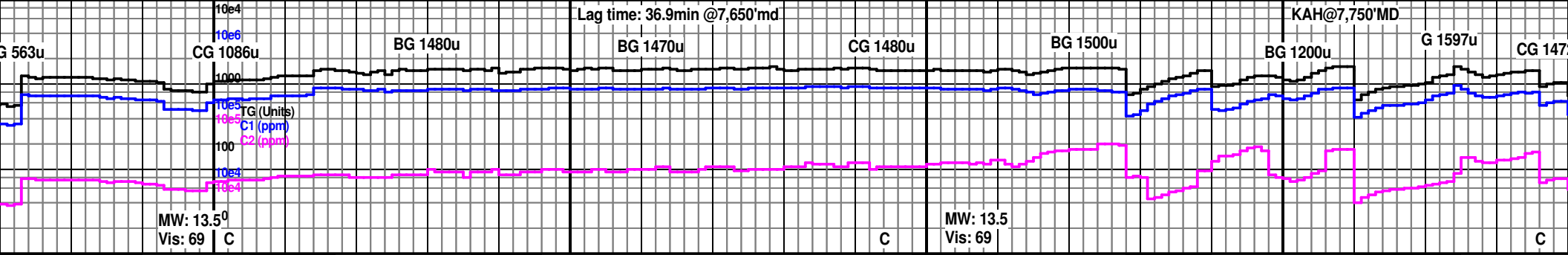
MD: 7,352' TVD: 7,232.43' INC: 50.9° AZM: 56.8°	MD: 7,383' TVD: 7,251.60' INC: 52.7° AZM: 59.7°	6500 TVD	MD: 7,415' TVD: 7,270.66' INC: 54.2° AZM: 60.7°	MD: 7,446' TVD: 7,288.68' INC: 57.0° AZM: 61.5°	MD: 7,477' TVD: 7,306.09' INC: 57.0° AZM: 64.9°	MD: 7,509' TVD: 7,322.86' INC: 59.8° AZM: 68.7°	MD: 7,541' TVD: 7,338.13' INC: 63.2° AZM: 73.2°
--	--	----------	--	--	--	--	--

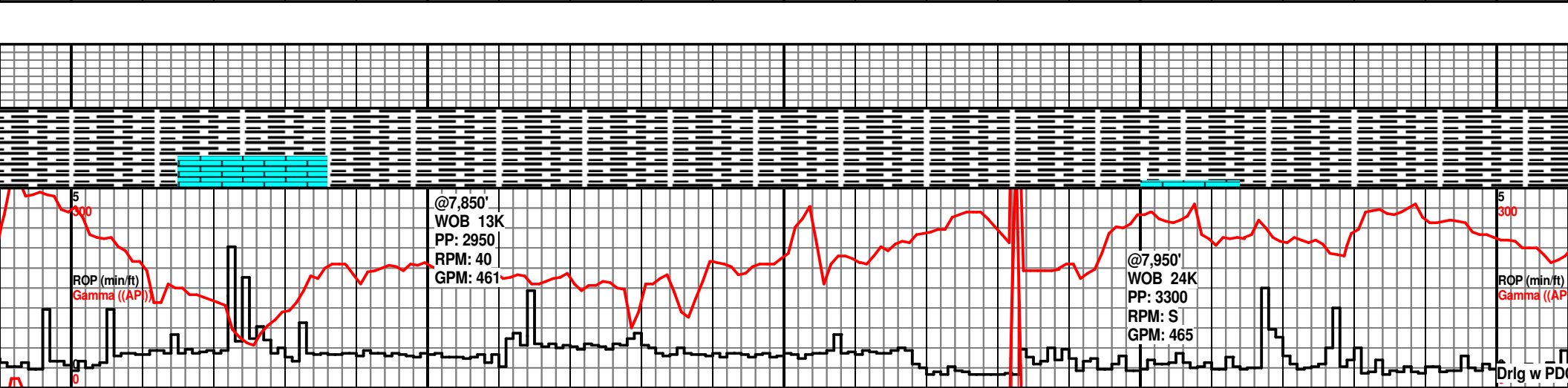
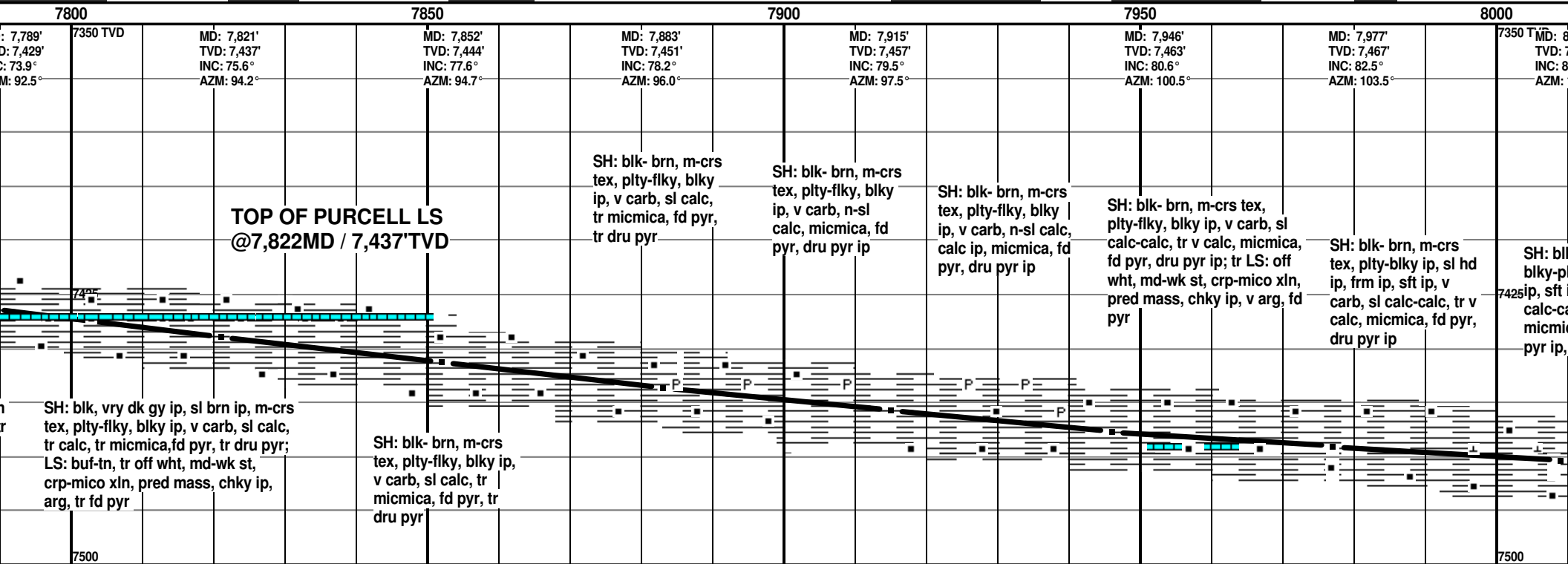
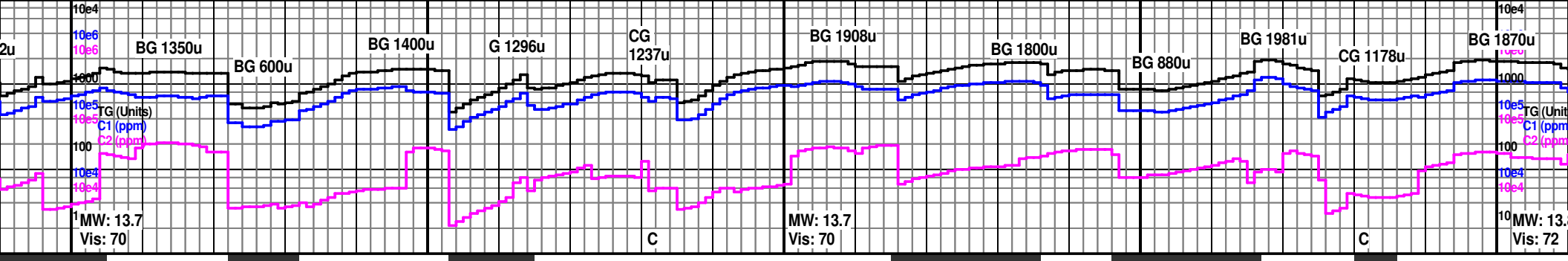
TOP OF TULLY LS
@7,367' MD / 7,242' TVD

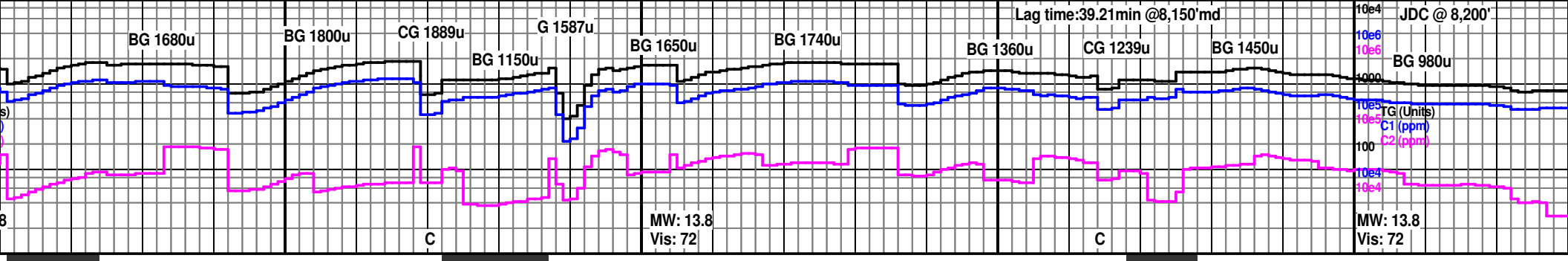
Mud Check @ 7,400'
Wt 13.4 FC 3/32
FV 66 H2O 18%
PV 26 Oil 56%
YP 9 Sol 25.8%
GS 8/21/26 O/W 76/24
FL 5.2 Cl 21K

TOP OF HAMILTON SH
@7,431' MD / 7,280' TVD





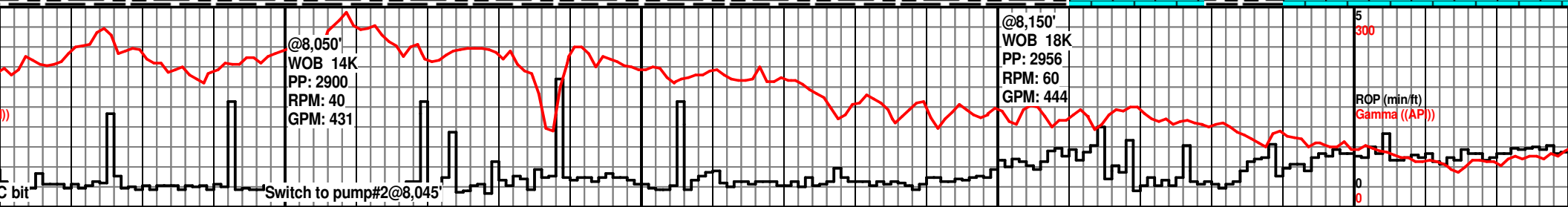
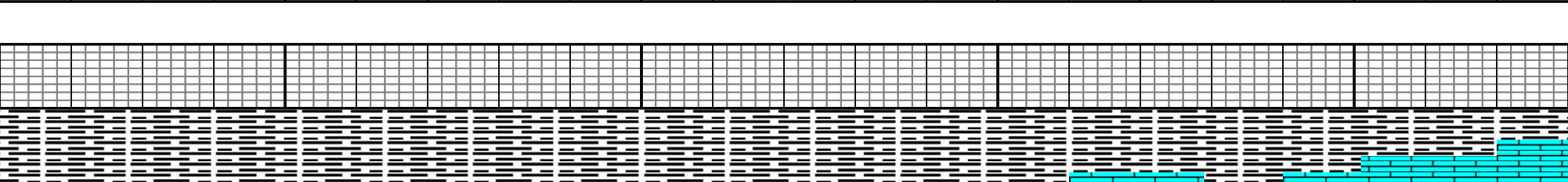
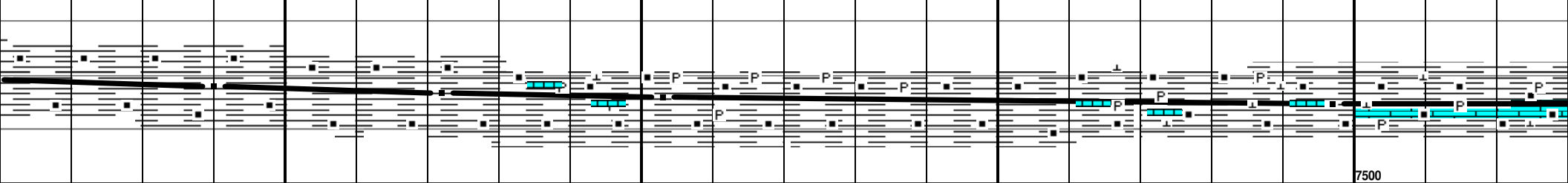


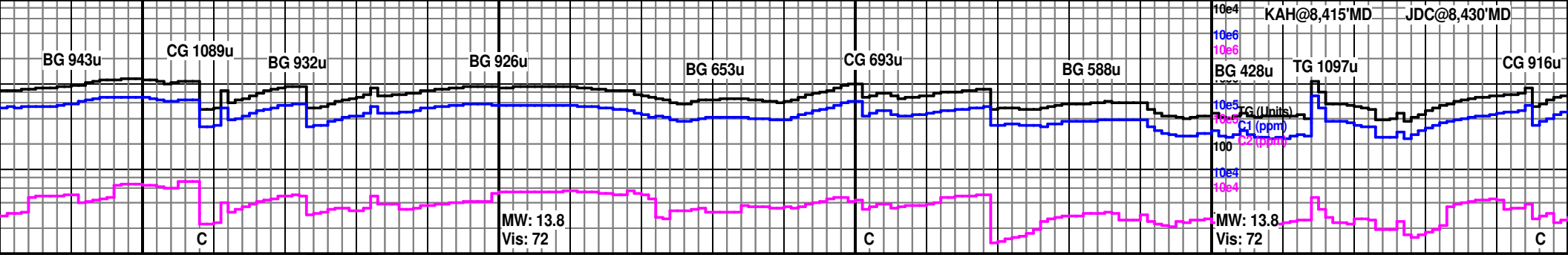


8050	8100	8150	8200
MD: 8,009' TVD: 7,471' INC: 4.5° AZM: 106°	MD: 8,040' TVD: 7,473' INC: 85.7° AZM: 107.4°	MD: 8,072' TVD: 7,475' INC: 87.3° AZM: 107.8°	MD: 8,103' TVD: 7,476' INC: 89.0° AZM: 107.9°
			7350 TVD MD: 8,197' TVD: 7,477.99' INC: 89.7° AZM: 107.1°

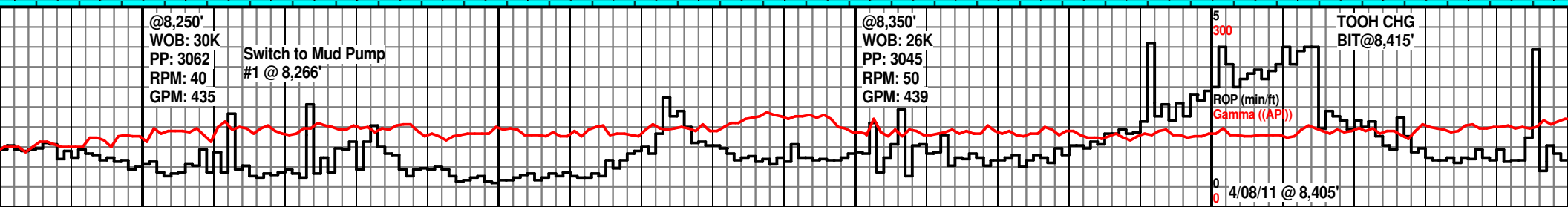
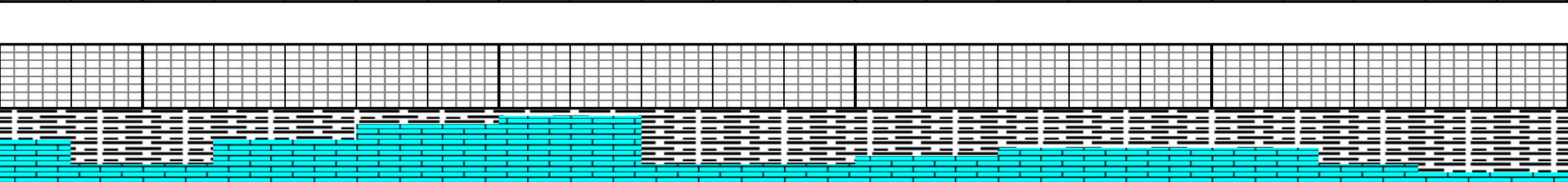
Landed Curve @ 8,088'

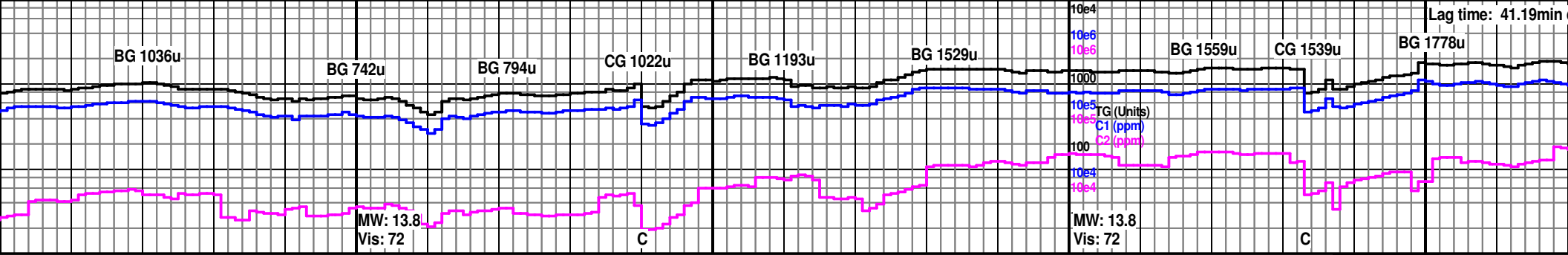
SH: blk-brn, m-crs tex, sl hd ip, frm-sft, v carb, sl calc, tr v calc, ca, fd pyr, dru tr frac fil calc	SH: blk, m-crs tex, blk-y-plty, anorph ip, frm-sft, sl hd ip, v carb, sl calc ip, calc ip, tr v calc, mica, fd pyr, nod pyr ip	SH: blk-brn, m-crs tex, blk-y-plty, amorph ip, frm-sft, sl hd ip, v carb, sl calc ip, calc ip, fd pyr	SH: blk-brn, m-crs tex, blk-y-plty, frm-sft, sl hd ip, v carb, sl calc ip, calc ip, fd pyr, nod pyr ip, tr frac fil calc; rr LS	SH: blk-brn, m-crs tex, blk-y-plty, frm-sft, sl hd ip, carb, calc ip, abnt fd pyr ip, nod pyr ip; tr LS	SH: blk-brn, m-crs tex, blk-y-plty, frm-sft, sl hd ip, carb, calc ip, abnt fd pyr	SH: blk-brn, m-crs tex, blk-y-plty, sl hd, frm/hd ip, carb, calc, fd pyr, tr nod pyr ip, frac fil calc; tr buf LS	SH: blk-brn, m-crs tex, blk-y-plty, sl hd, frm/hd ip, carb, calc, fd pyr, tr nod pyr ip, frac fil calc; tr LS: tn-lt brn, ltgy ip, md-wk st, crp-mico xln, mass, v arg, fd pyr	SH: dk gy-blk, f-rgh tex, frm lam, sub blk-y-blky, occ p thruout, sme frac filled cal lam & pinpoint pyr, w/LS: sme off wh, sme buff, mott predomin micro xln, sme cry mass, arg
---	--	---	---	---	---	---	--	--





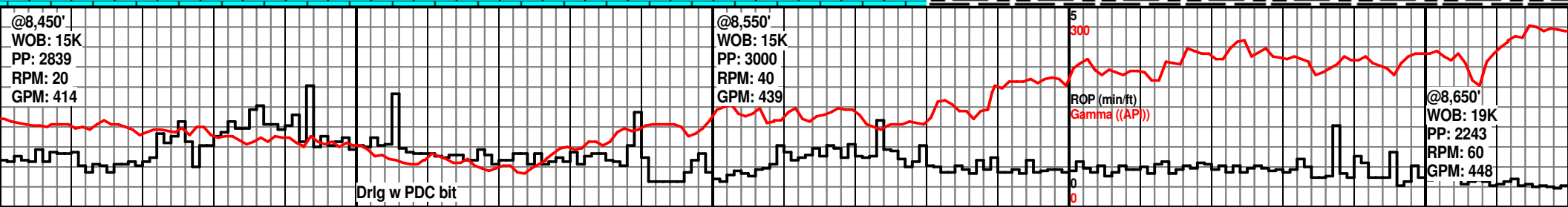
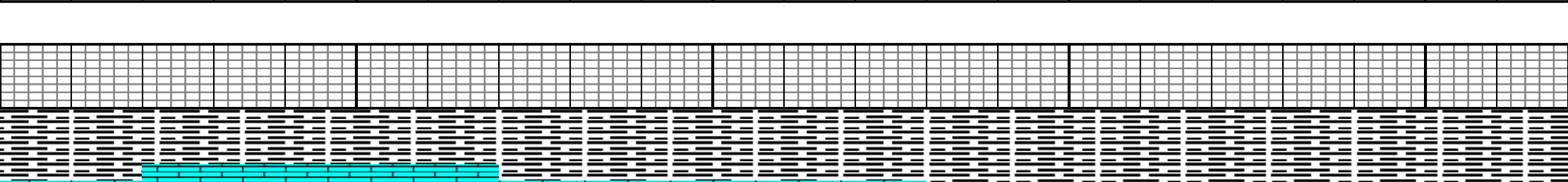
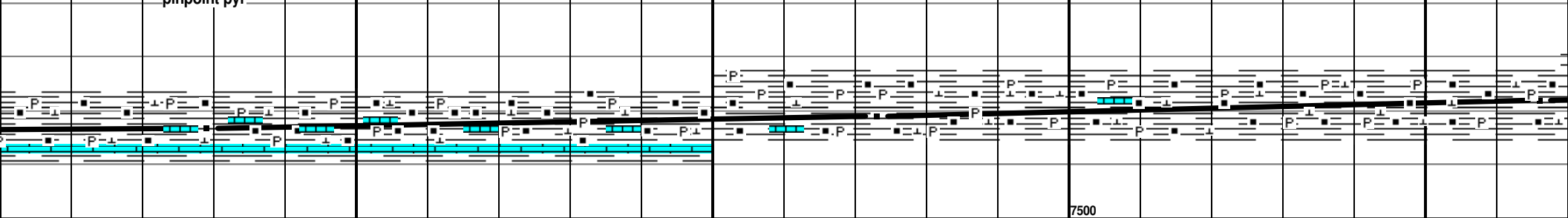
8250	8300	8350	8400	8450
<p>Mud Check @ 8,250'</p> <p>Wt 13.8 FC 2/32 FV 72 H2O 18% PV 31 Oil 55% YP 10 Sol 26.6% GS 9/24/27 O/W 75/25 FL 5.2 CI 24K</p>	<p>MD: 8,291' TVD: 7,477.74' INC: 90.6° AZM: 105.1°</p>	<p>Mud Check @ 8,415'</p> <p>Wt 13.8 FC 2/32 FV 74 H2O 17% PV 32 Oil 56% YP 10 Sol 26.6% GS 11/27/31 O/W 77/23 FL 4.8 CI 24K</p>	<p>MD: 8,385' TVD: 7,476' INC: 90.7° AZM: 104.9°</p>	<p>7350 TVD O.B. #5 Drilled 1915' in 48 1/4 Hrs Avg ROP: 39.68</p>
<p>n, marly, sme lty, carb c xtols, sme med-dk gy, , mdst-wkst, pto xln,</p>	<p>LS: med-dk gy, sme lt gy, sme off wh, sme buff, mott, mdst-wkst, micro xln, sme crypto xln, mass, frm-mod hd, arg, sme pinpoint & lam pyr</p>	<p>LS: med-dk gy, lt br, sme lt gy, sme off wh, sme buff, mott, mdst-wkst, crypto-micro xln, mass, frm-mod hd, arg, sme pinpoint & lam pyr</p>	<p>SH: blk, med-rgh tex, frm, calc, sub blk, blk ip, v carb, frac filled calc xtols, sme lam pyr, w/LS: med-dk gy, off wh, sme buff, mott, mdst- wkst, micro xln, mass, frm, arg</p>	<p>SH: dk gy-blk, med-rgh tex, frm, calc, sub blk, v carb, frac filled calc xtols, sme lam pyr, w/LS: med-dk gy, off wh, sme buff, mott, mdst- wkst, micro xln, mass, frm, arg</p>

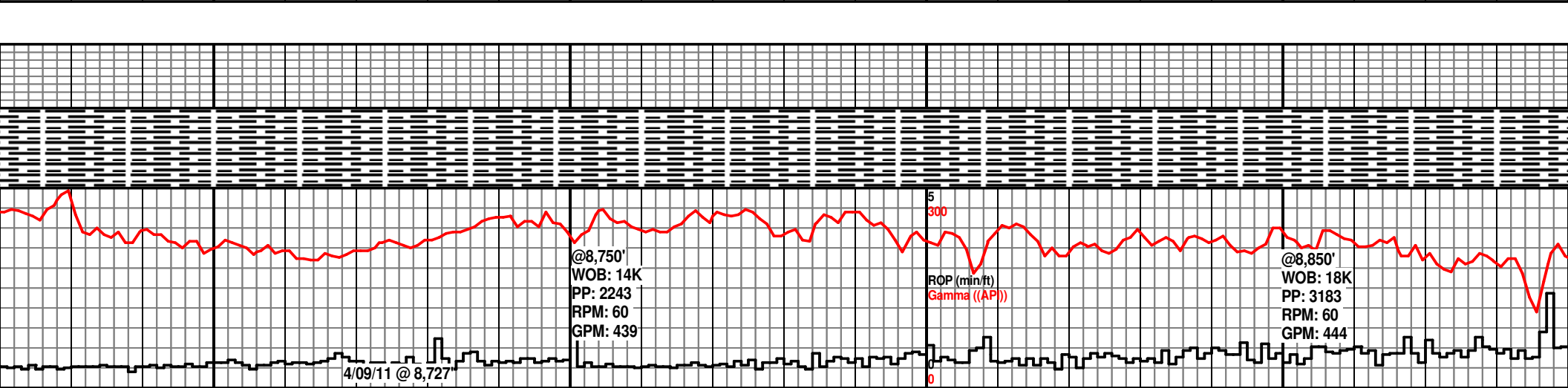
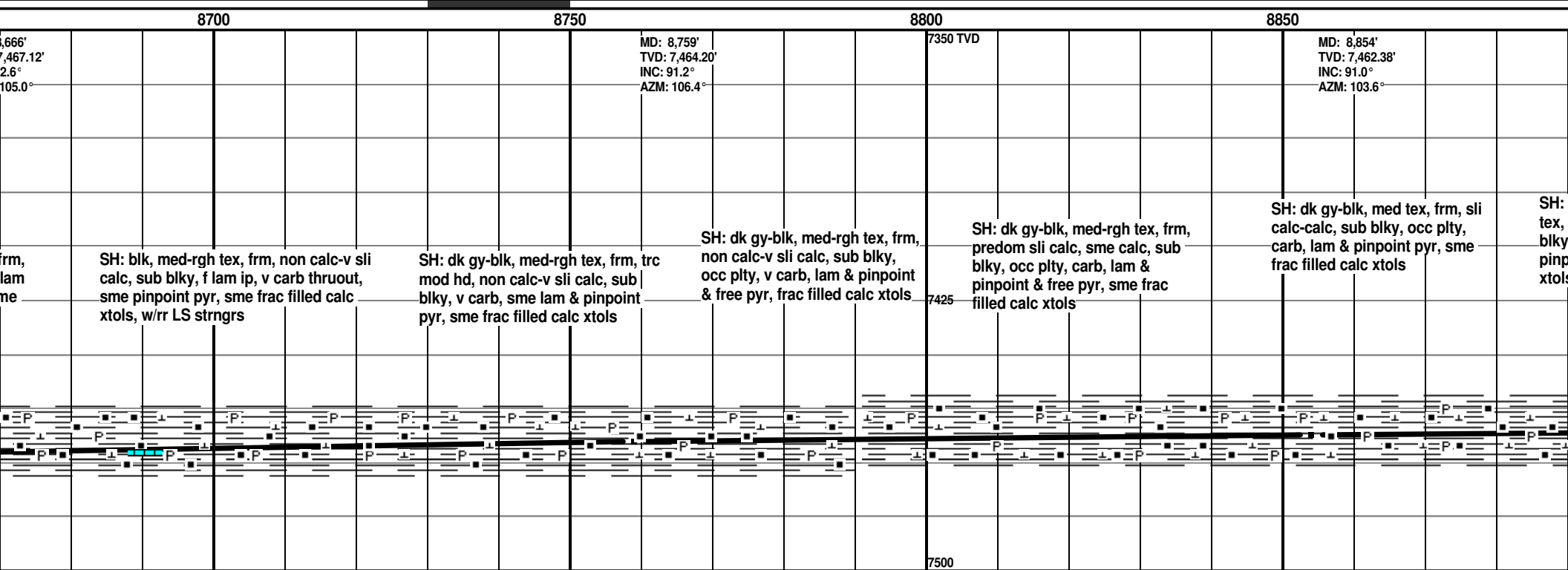
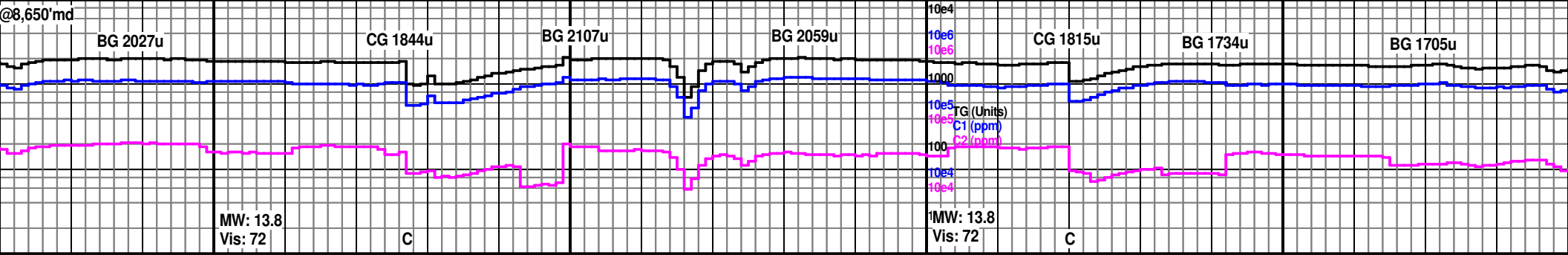


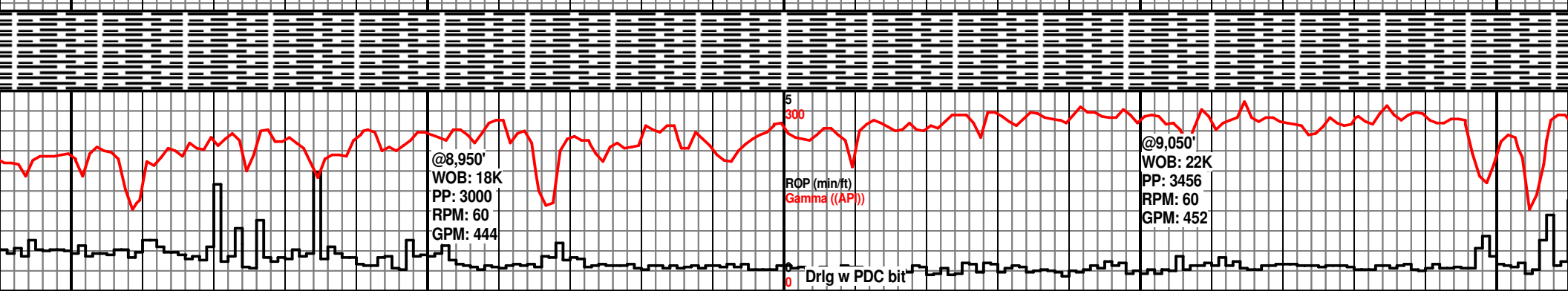
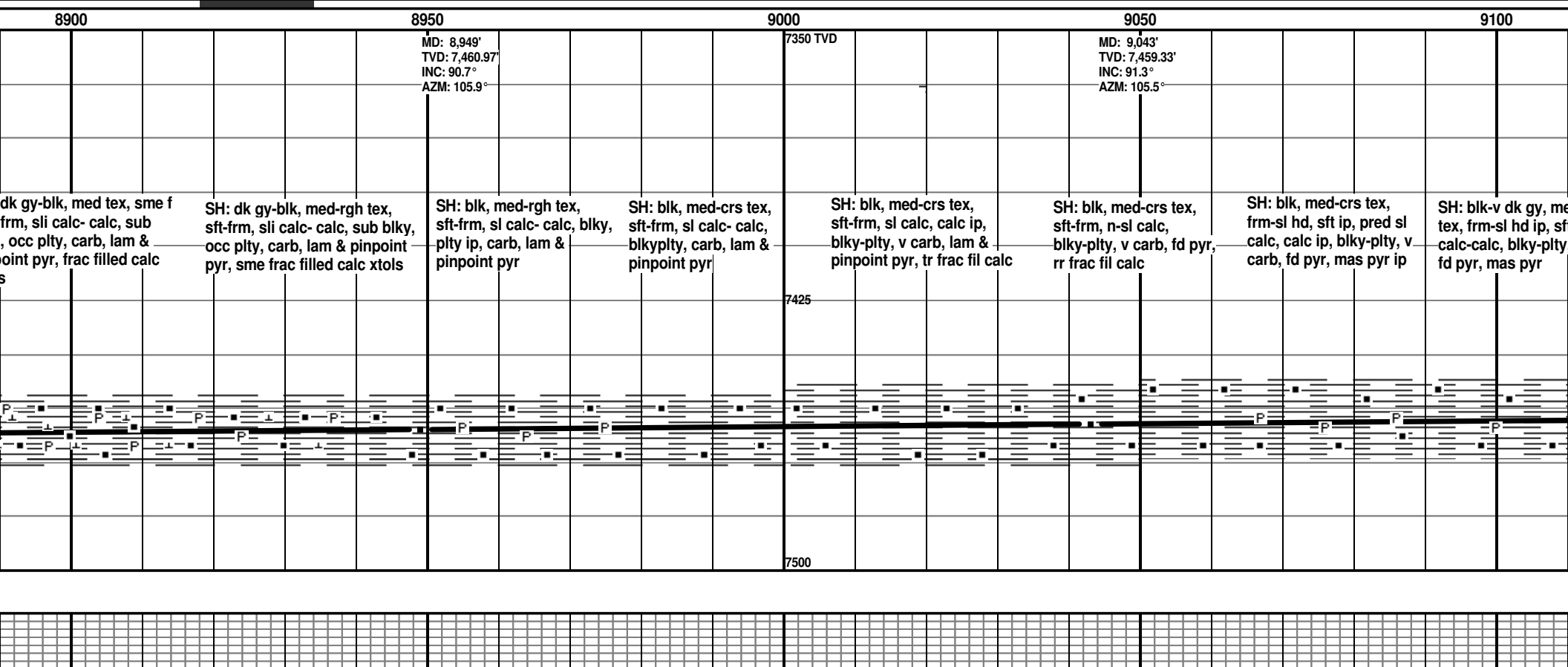
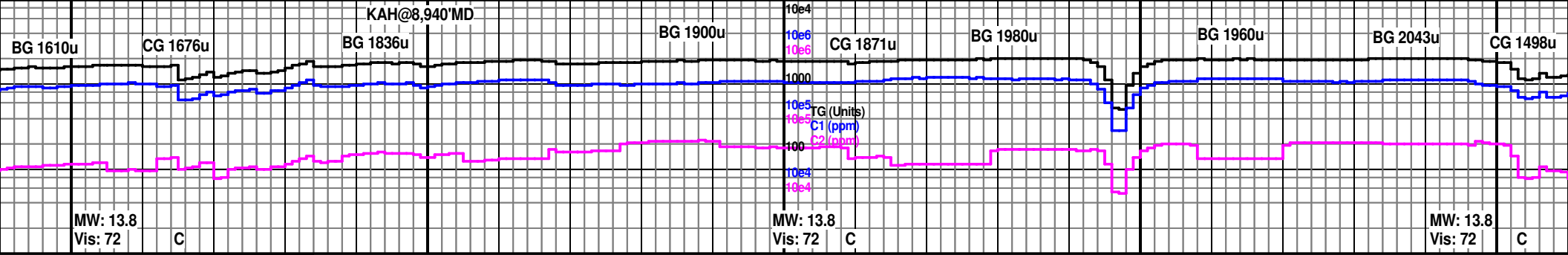


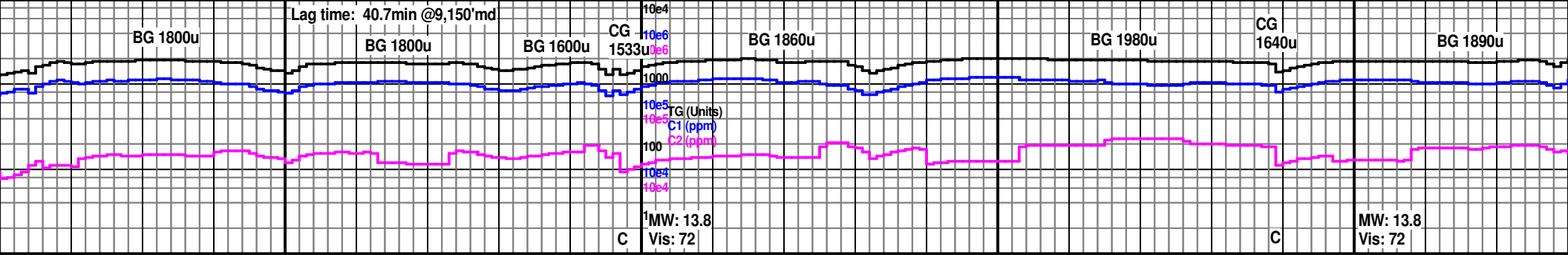
50 8500 8550 8600 8650

	MD: 8,479' TVD: 7,474.79' INC: 91.6° AZM: 103.8°		MD: 8,573' TVD: 7,471.42' INC: 92.5° AZM: 103.0°	7350 TVD		MD: 8,650' TVD: 7,468.15' INC: 93.1° AZM: 103.0°
med tex, sli calc-calc, blk, carb, pinpoint pyr, sme d calc xtols	SH: blk, med tex, sft frm, marly, sub blk-blky, carb, sme pinpoint pyr, sme frac filled calc xtols, w/LS: off wh, med gy, mott thruout, micro- vf xln, chlky, sft, v arg, pinpoint pyr	SH: blk, med-rgh tex, frm, sli calc, sub blk, occ blk, f lam ip, carb, sme pinpoint pyr, sme frac filled calc xtols, w/sme chlky LS strngs	SH: blk, med-rgh tex, frm, sli calc, sub blk, occ blk, f lam ip, carb thruout, sme pinpoint pyr, sme frac filled calc xtols	SH: blk, med tex, occ rgh tex, frm, sli calc, sub blk, occ blk, f lam ip, carb thruout, sme pinpoint pyr, sme frac filled calc xtols, w/r LS strngs		SH: blk, med tex, occ rgh tex, frm, sli calc, sub blk, occ blk, f lam ip, v carb, sme pinpoint pyr, sme frac filled calc xtols

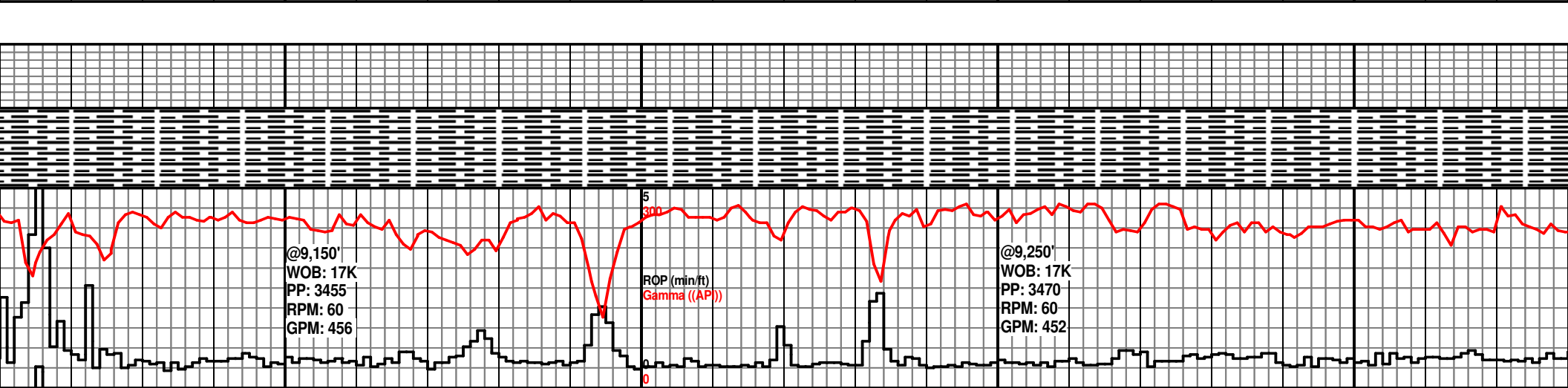


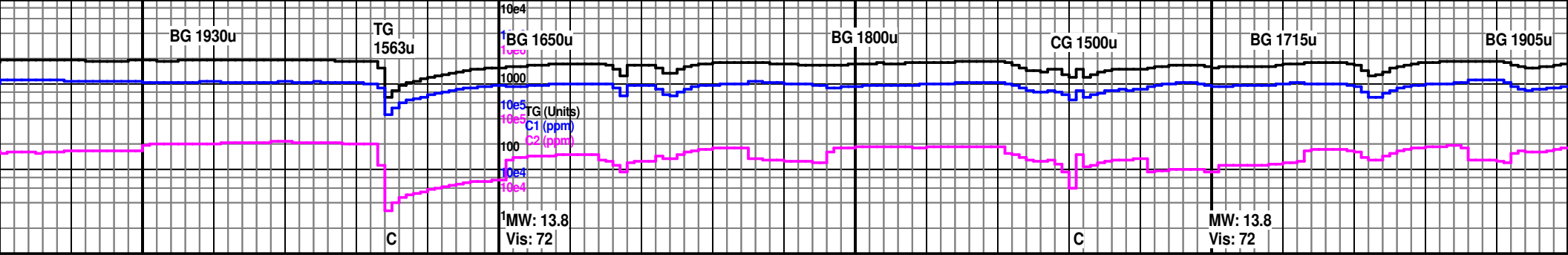






9150				9200				9250				9300			
MD: 9,137' TVD: 7,458' INC: 89.9° AZM: 104.6°				7350 TVD				MD: 9,229' TVD: 7,459' INC: 89.2° AZM: 103.7°				MD: 9,229' TVD: 7,459' INC: 89.2° AZM: 103.7°			
SH: blk-v dk gy, med-crs tex, frm- sl hd, sft, sl calc-calc, blk-pty, v carb, fd/mas pyr, tr frac fil calc	SH: blk-v dk gy, med-crs tex, frm- sl hd, sft, sl calc, blk-pty, v carb, fd/mas pyr	SH: blk-v dk gy, med-crs tex, sl hd, sft, frm, n-sl calc, tr calc, blk-pty, v carb, fd/ mas pyr, frac fil calc ip	SH: blk-v dk gy, med-crs tex, sl hd, sft-frm, n-sl calc, tr calc, blk-pty, v carb, fd/ mas pyr	SH: blk-v dk gy, med-crs tex, sl hd, sft-frm, n-sl calc, blk-pty, v carb, fd pyr ip, mas pyr	SH: blk-v dk gy, med-crs tex, sft-frm, sl hd ip, n-sl calc, blk-pty, v carb, fd pyr ip, mas pyr	SH: blk-v dk gy, med-crs tex, sft-frm, sl hd, n-sl calc, blk-pty, v carb, mas pyr	SH: blk-v dk gy, med-crs tex, sft-frm, sl hd, n-sl calc, blk-pty, v carb, mas pyr	SH: blk-v dk gy, med-crs tex, sft-frm, sl hd, n-sl calc, blk-pty, v carb, mas pyr	SH: blk-v dk gy, med-crs tex, sft-frm, sl hd, n-sl calc, blk-pty, v carb, mas pyr	SH: blk-v dk gy, med-crs tex, sft-frm, sl hd, n-sl calc, blk-pty, v carb, mas pyr	SH: blk-v dk gy, med-crs tex, sft-frm, sl hd, n-sl calc, blk-pty, v carb, mas pyr	SH: blk-v dk gy, med-crs tex, sft-frm, sl hd, n-sl calc, blk-pty, v carb, mas pyr	SH: blk-v dk gy, med-crs tex, sft-frm, sl hd, n-sl calc, blk-pty, v carb, mas pyr	SH: blk-v dk gy, med-crs tex, sft-frm, sl hd, n-sl calc, blk-pty, v carb, mas pyr	
7425				7500											

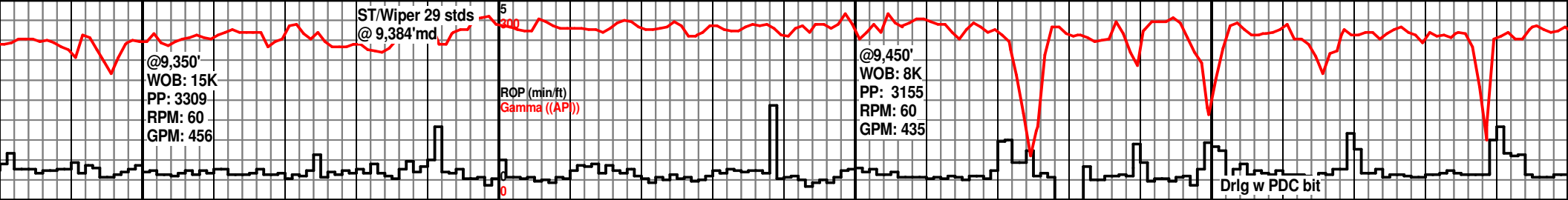
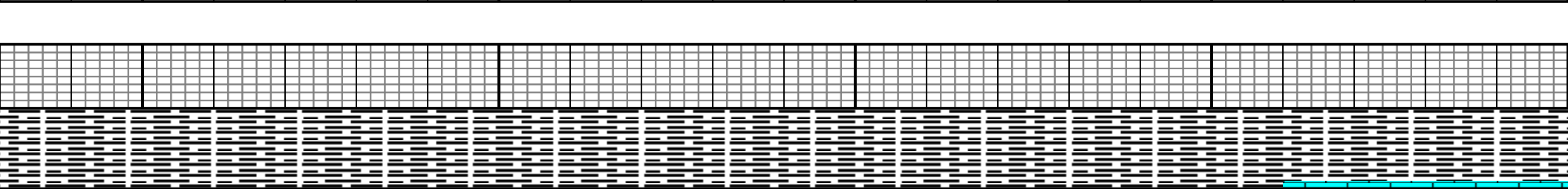
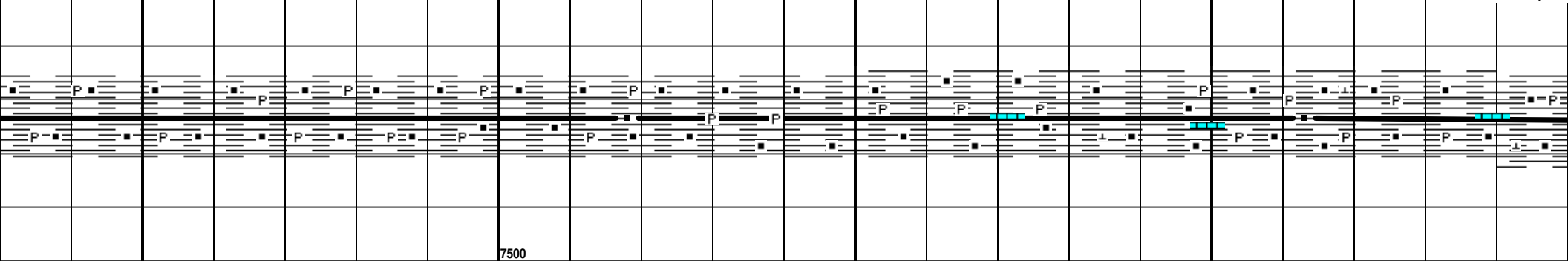


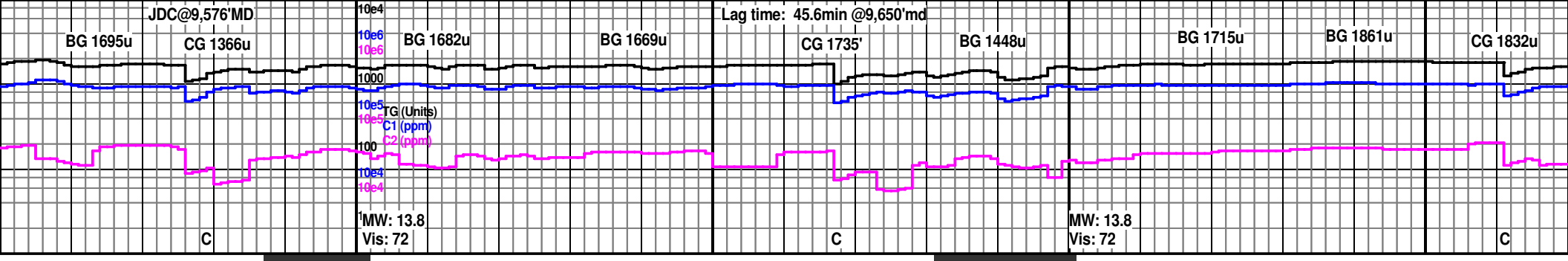


9350 9400 9450 9500 95

<p>Mud Check @ 9,338'</p> <p>Wt 13.8 FC 2/32 FV 72 H2O 16% PV 32 Oil 56% YP 10 Sol 27.7% GS 11/27/31 O/W 78/22 FL 4.4 CI 23K</p>	<p>7350 TVD ST/Wiper@9,384'md</p>	<p>MD: 9,418' TVD: 7,460' INC: 90.1° AZM: 103.4°</p>	<p>MD: 9,513' TVD: 7,460' INC: 89.7° AZM: 102.3°</p>
--	---------------------------------------	--	--

<p>SH: blk-v dk gy, med- crs tex, sft-frm, sl hd, pred n calc, sl calc ip, blk- pty, v carb, mas pyr</p>	<p>SH: blk-v dk gy, med- crs tex, sft-frm, sl hd, pred n calc, sl calc ip, blk- pty, v carb, mas pyr</p>	<p>SH: blk-v dk gy, med- crs tex, frm-sl hd, sft ip, n calc, sl calc ip, blk- pty, v carb</p>	<p>SH: blk-v dk gy, med- crs tex, frm-sl hd, sft ip, n-sl calc, blk- pty, v carb, fd pyr, rr mas pyr</p>	<p>SH: blk-v dk gy, med- crs tex, frm-sl hd, sft ip, n-sl calc, blk- pty, v carb, fd pyr, mas pyr</p>	<p>SH: dk gy-blk, med-rgh tex, sft-frm, sli calc-calc, sub blk, f lam ip, carb, lam & pinpoint pyr, sme frac filled calc xtols</p>	<p>SH: dk gy-blk, m sft-frm, sli calc-c lam ip, carb, lam sme frac filled ca strngs: off wh-n micro-vf xln, chl</p>
--	--	---	--	---	--	---





50 960 9650 9700 9750

	7350 TVD: 9,607' TVD: 7,461.53' INC: 89.4° AZM: 102.8°			MD: 9,702' TVD: 7,461.70' INC: 90.6° AZM: 106.3°		
--	---	--	--	---	--	--

med-rgh tex, calc, sub blk, f & pinpoint pyr, calc xtols, w/LS med gy, mdst, chy, v arg

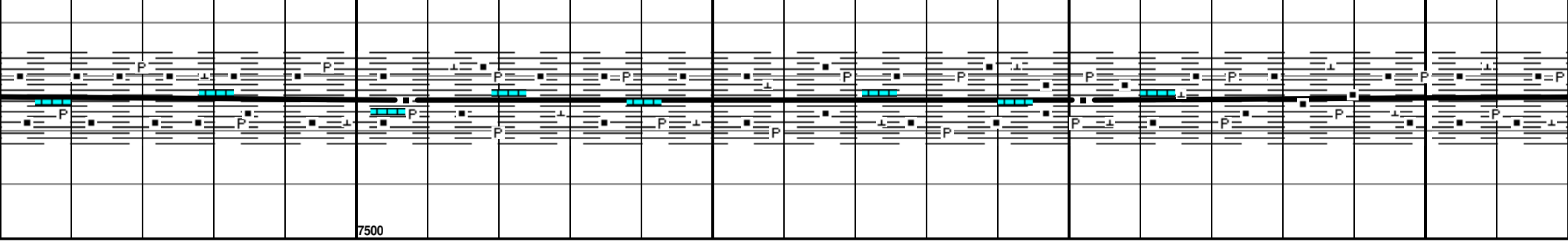
SH: dk gy-blk, med-rgh tex, sft-frm, occ mod hd, sli calc-calc, sub blk, amorph, sme ply, f lam ip, carb, lam & pinpoint pyr, sme frac filled calc xtols, w/LS strngrs: off wh-med gy, mdst, micro-vf xln, sft, chlky, v arg

SH: dk gy-blk, med-rgh tex, sft-frm, sli calc, sub blk, sme ply, f lam ip, carb, sme pinpoint pyr, sme frac filled calc xtols, w/LS strngrs: off wh-med gy, mdst, micro-vf xln, sft, chlky, v arg

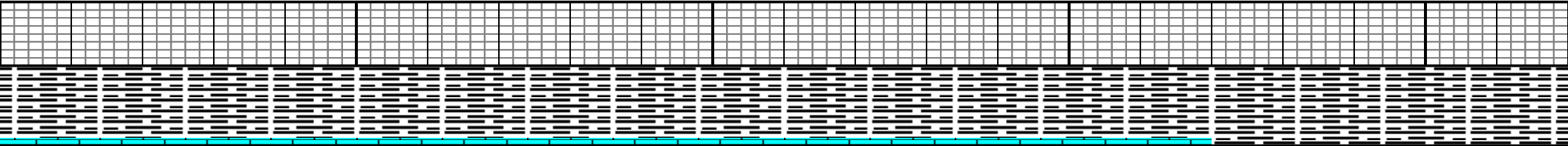
SH: dk gy-blk, med-rgh tex, sft-frm, sli calc, sub blk, sme ply, f lam ip, carb, sme pinpoint pyr, sme frac filled calc xtols

SH: dk gy-blk, med-rgh tex, sft-frm, sli calc, sub blk, sme ply, f lam ip, carb, sme lam & pinpoint pyr, sme frac filled calc xtols, scat trc LS strngrs

SH: dk gy-blk, med-rgh tex, sft-frm, sli calc, sub blk, sme ply, f lam ip, carb, sme lam & pinpoint pyr, sme frac filled calc xtols



7500

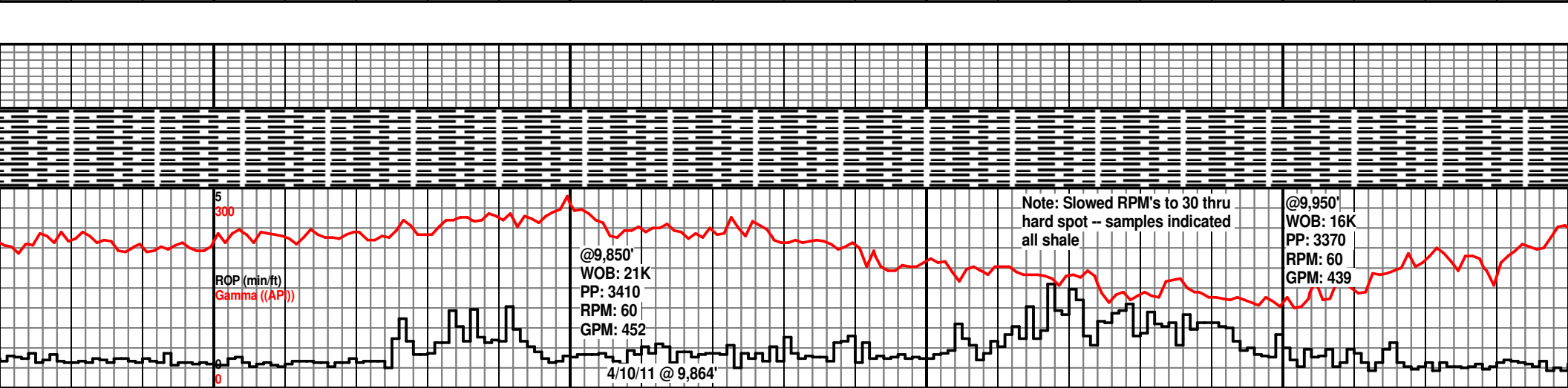
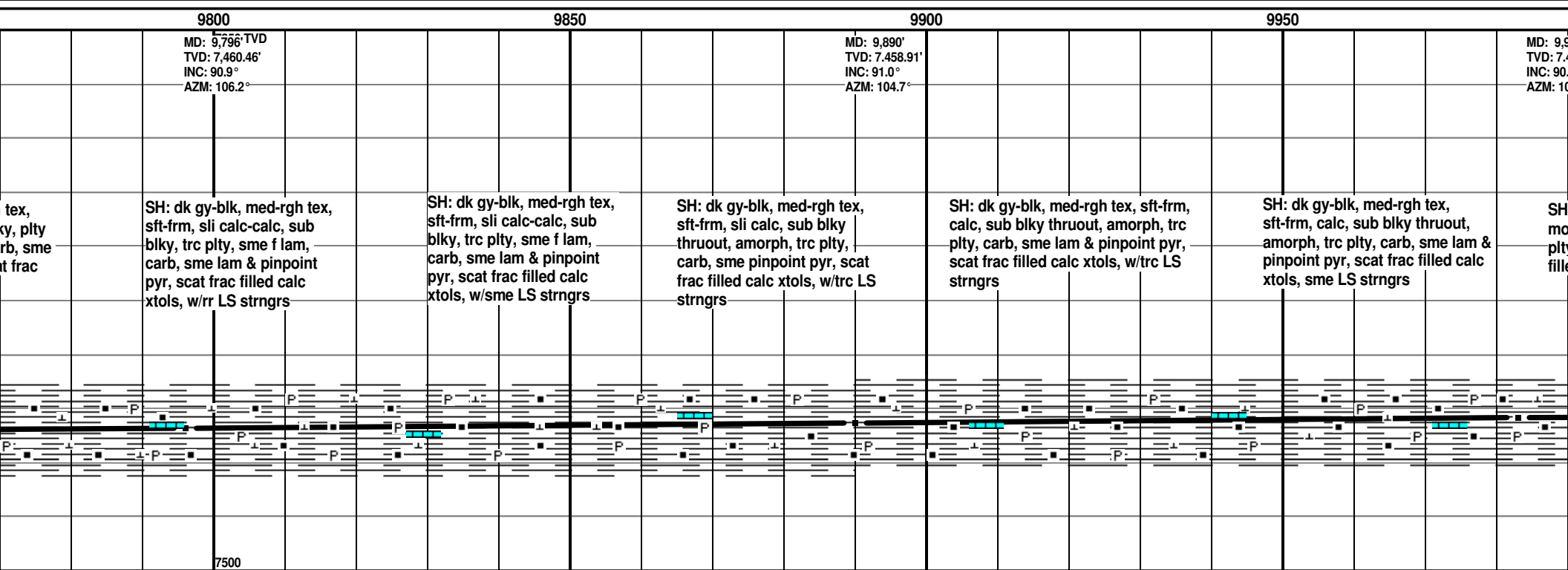
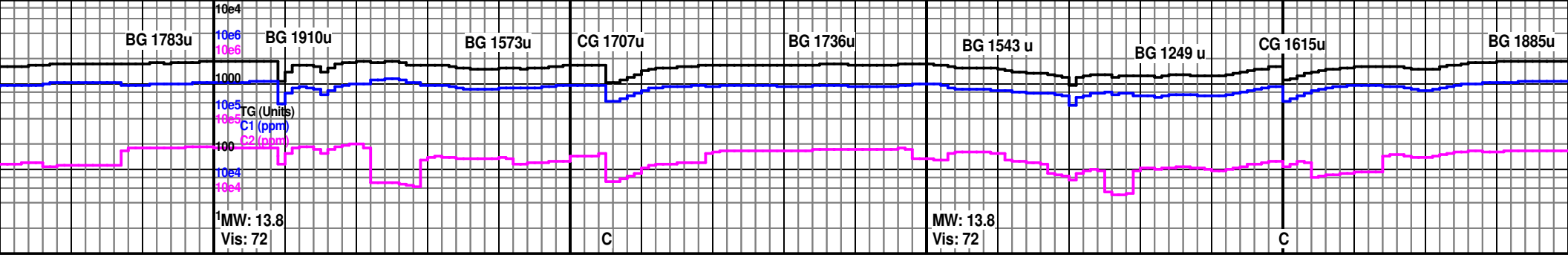


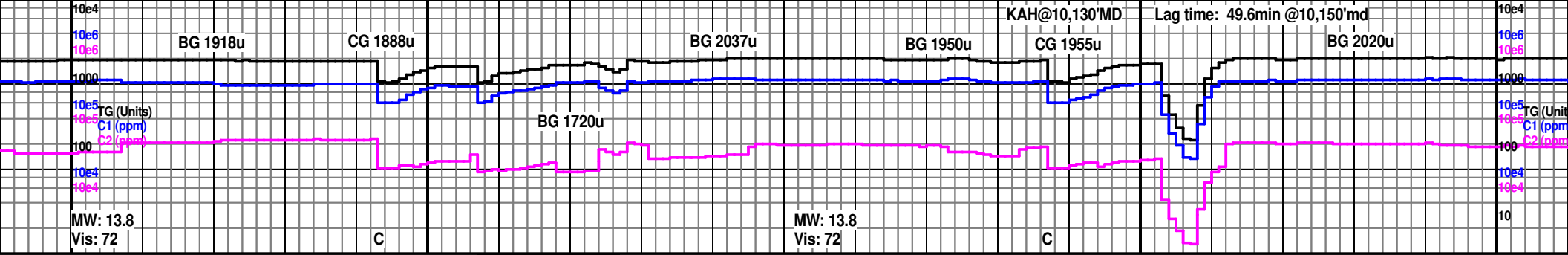
@9,550'
WOB: 21K
PP: 3415
RPM: 60
GPM: 444

5
300
ROP (min/ft)
Gamma (AP)

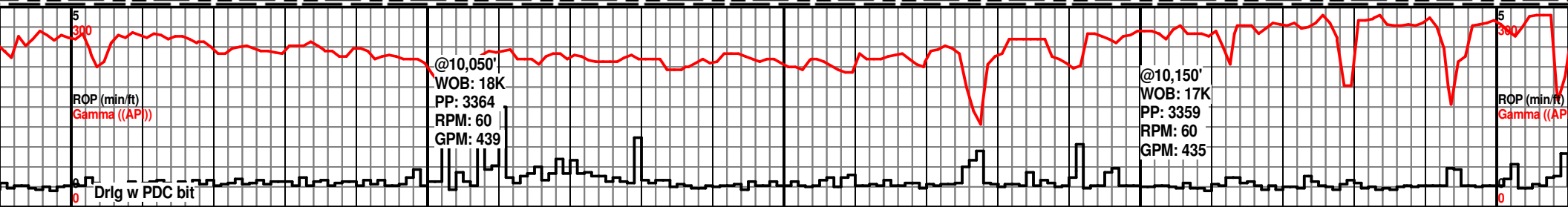
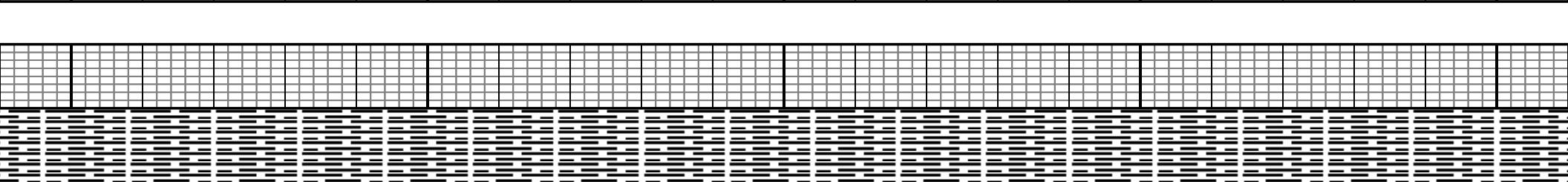
@9,650'
WOB: 18K
PP: 3364
RPM: 60
GPM: 452

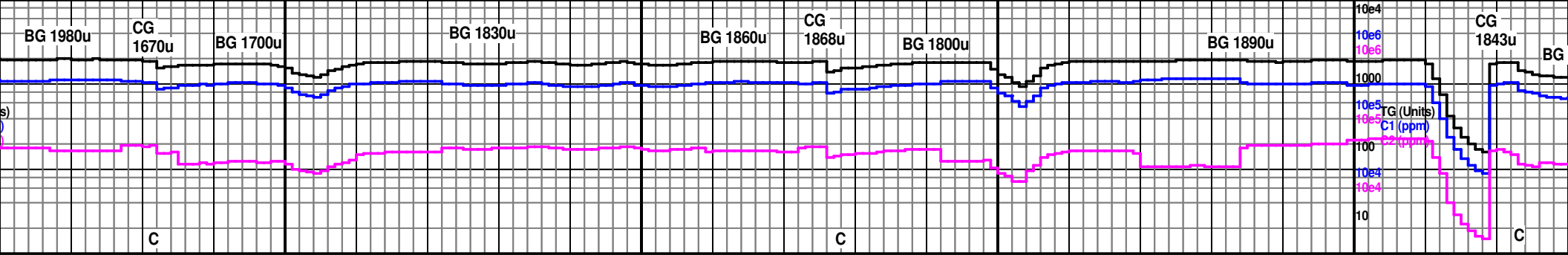
@9,750'
WOB: 21K
PP: 3481
RPM: 60
GPM: 452



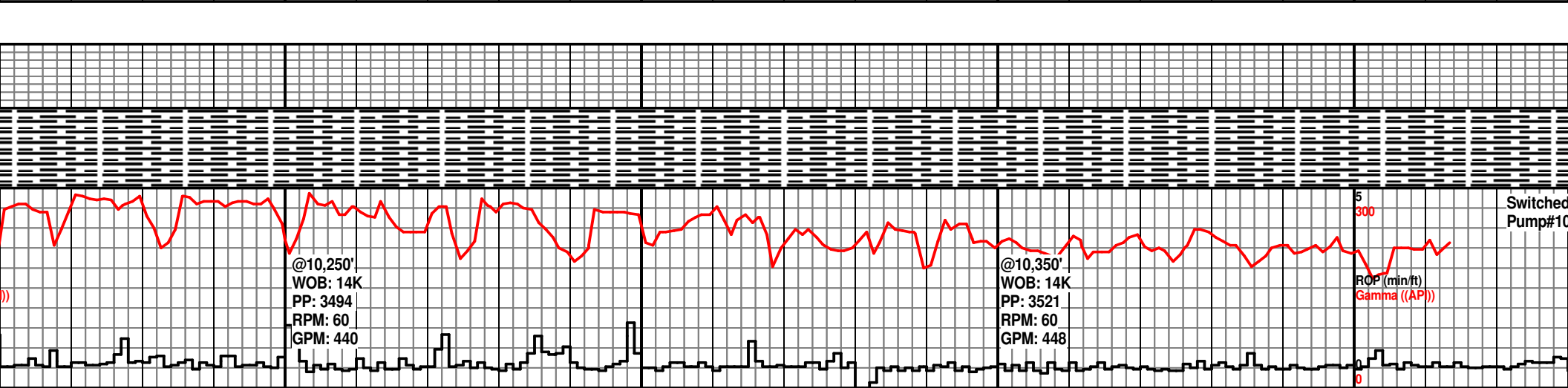


10000	10050	10100	10150	10200
7350 TVD		MD: 10,077" TVD: 7,456.7" INC: 89.9° AZM: 107.9°		MD: 10,171' TVD: 7,457.5' INC: 89.1° AZM: 108.6°
7425				7425
7500				7500
dk gy-blk, med-rgh tex, sft-frm, occ mod hd, v sli calc, sub blkly, amorph, trc y, carb, sme pinpoint pyr, scat frac filled calc xtols, w/r LS strngs	SH: dk gy-blk, med-rgh tex, sft-frm, occ mod hd, v sli calc, sub blkly, amorph, trc plty, carb, sme pinpoint & lam & free pyr, scat frac filled calc xtols	SH: dk gy-blk, med-rgh tex, sft-frm, occ mod hd, v sli calc, sub blkly, amorph, sme plty, carb, sme pinpoint & lam & free pyr, scat frac filled calc xtols	SH: blk-v dk gy, med crs tex, frm-sl hd ip, sft ip, sl calc-calc, blkly-plty, carb, fd pyr	SH: blk-v dk gy, med-crs tex, frm-sl hd, sft, pred n-sl calc, calc ip, blkly-plty, v carb, fd pyr

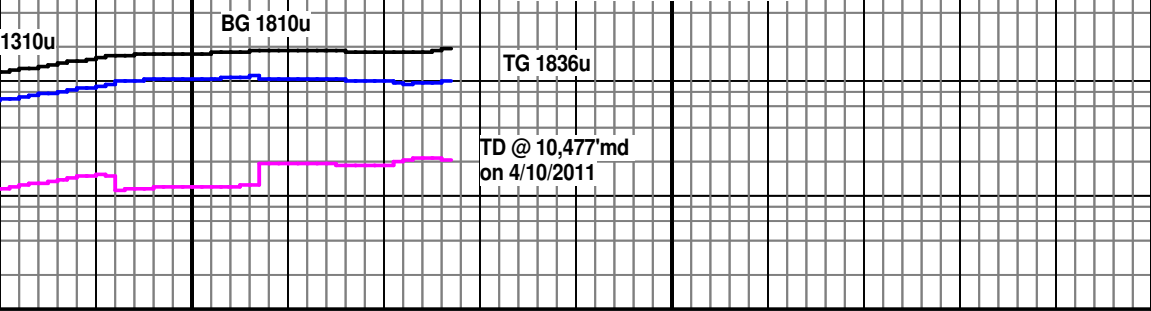




10250		10300		10350		10400	
MD: 10,265' TVD: 7,459' INC: 88.3° AZM: 109.3°				MD: 10,360' TVD: 7,462' INC: 88.7° AZM: 109.0°		7350 TVD MD: 10,413' TVD: 7,463' INC: 88.4° AZM: 108.1°	
blk-v dk gy, med-crs frm-sl hd, sft, n- sl calc, plty, v carb, fd pyr, pyr ip, rr frac fil calc	SH: blk-v dk gy, med-crs tex, frm-sl hd, sft, n- sl calc, blk-ply, v carb, fd pyr, frac fil calc/pyr	SH: blk-v dk gy, med-crs tex, frm-sl hd, sft, n calc, blk-ply, v carb, fd pyr, frac fil calc	SH: blk-v dk gy, med-crs tex, frm-sl hd, sft, n calc, blk-ply, v carb, fd pyr, frac fil calc	SH: blk-v dk gy, med-crs tex, frm-sl hd, sft, n calc, sl calc ip, rr calc-v calc, blk-ply, tr amorph, v carb, fd pyr, mas pyr ip, sme frac fil calc	SH: blk-v dk gy, med-crs tex, frm-sl hd, sft, n-sl calc, rr calc, blk-ply, tr amorph, v carb, fd pyr, abnt mas pyr, frac fil calc	SH: blk-v dk gy, med-crs tex, frm-sl hd, sft, n-sl calc ip, calc ip, blk-ply, v carb, abnt fd/mas pyr, abnt frac fil calc	SH: blk-v dk tex, frm-sl h ip, calc ip, b carb, abnt fd frac fil calc
						7425	7500



Lag time: 51.2min @10,477'md



10450

10500

10550

O.B. #6 Drilled
2,062' in 34 Hrs
ROP: 61 ft/hr

ST/Wiper @ 10,477' md
Avg

MD: 10,477'
TVD: 7,465'
INC: 88.4°
AZM: 108.1

gy, med-crs
d, sft, n-sl calc
blky-plty, v
/mas pyr, abnt

SH: blk-v dk gy, med-crs
tex, frm-sl hd, sft, n-sl calc
ip, calc ip, blky-plty, v
carb,abnt fd/mas pyr, abnt
frac fil calc

**TD Zogol A 2H @10,477'md
on 4/10/2011 @ 9:30am**

Loggers released from duty @ 6:30pm
on 4/10/2011



to
10,423'md

@10,450'
WOB: 17K
PP: 3500
RPM: 60
GPM: 435

ST/Wiper 42 stds
@10,477'md

