



PHOENIX TECHNOLOGY SERVICES

MD
1:240
Feet

Client: **FOT**
Well Name: **5130856**
County: **Taylor**

MWD Gamma / ROP

Unique ID/API: **47-910-1216**

Company Representative

Surface Location: **Taylor County**

Scott Boudreaux

Country: **US**

State: **West Virginia**

Rig Name: **Patterson 622**

Geologist

Latitude: **39° 17' 30.559" N**

Kevin Wolfe

Longitude: **80° 9' 10.411" W**

License/Permit#: **1216**

Directional Drillers

Job No: **1130280**

Cody Barrick

Permanent Datum: **Mean Sea Level**

Matthew LaFreniere

Drilling Measurement From: **DF**

GL: **1424** Feet

MWD Operator

KB: **1446** Feet

Shawn Agren

Spud Date: **18/05/2011**

Dan Westphal

Print Date: **May 29, 2011**

Log Start Depth: **6860** Feet

Log End Depth: **10380** Feet

Bottom Hole Temp: **161.6 °F**

Leg Name
Main Leg

Comments:

PHOENIX TECHNOLOGY SERVICES LP (PHOENIX) DOES NOT MAKE AND EXPRESSLY DISCLAIMS ALL WARRANTIES, REPRESENTATIONS AND CONDITIONS, WITH RESPECT TO THE INFORMATION CONTAINED IN THIS DOCUMENT, WHETHER ORAL OR WRITTEN, EXPRESS OR IMPLIED OR ARISING FROM CONTRACT OR STATUTE INCLUDING, WITHOUT LIMITATION, THE IMPLIED WARRANTIES OF MERCHANTABILITY, ACCURACY AND FITNESS FOR A PARTICULAR PURPOSE. ANYONE USING THIS INFORMATION DOES SO AT THEIR OWN RISK AND ACKNOWLEDGES AND AGREES THAT PHOENIX SHALL NOT BE LIABLE FOR ANY ERROR, OMISSION, DEFECT, DELAY, INACCURACY OR INCOMPLETENESS IN THE INFORMATION AND WITHOUT LIMITING THE FOREGOING, PHOENIX DOES NOT WARRANT THAT THE INFORMATION OR THE USE THEREOF WILL BE FREE OF ALL ERRORS OR THAT IT DOES NOT INFRINGE ANY THIRD PARTY RIGHTS. ANYONE USING THE INFORMATION AGREES TO INDEMNIFY AND HOLD PHOENIX HARMLESS FROM ALL CLAIMS, ACTIONS, COSTS (INCLUDING LEGAL COSTS) ON A SOLIDATION AND HSOWM CLIENT BASIS, AND LIABILITIES ARISING FROM OR IN CONNECTION WITH THE USE OF THE INFORMATION.

BitRun:	1	2	3
Start Depth (ft):	6860	8376	10196
End Depth (ft):	8376	10196	10376.84
Start Date:		2011.05.27	2011.05.28
End Date:	2011.05.28	2011.05.28	2011.05.29
Gamma Scale Factor:	4.776	4.825	4.825
Stoney-b-Bit (PTB):	53	53	53
Gamma-b-Bit (GTB):	48	48	48
Tool Carrier ID (ft):	2.75	2.75	2.75
Tool Carrier OD (ft):	5	5	5
Hole Size (ft):	8.5	7.875	7.875
Casing Size (ft):	9.625	9.625	9.625
Casing Start Depth (ft):	0	0	0
Casing End Depth (ft):	0	2847	2847
Mid Type:	WBM	WBM	WBM
Mid Weight (lb/gal):	12.2	12.2	12.2
Mid Viscosity:	45	45	45
KCL Correction Factor:	0.003	0.003	0.003
Mid KCL Content (%):	0.001	0.001	0.001
Comment:	-	-	-

BitRun:			
Start Depth (ft):			
End Depth (ft):			
Start Date:			
End Date:			
Gamma Scale Factor:			
Stoney-b-Bit (PTB):			
Gamma-b-Bit (GTB):			
Tool Carrier ID (ft):			
Tool Carrier OD (ft):			
Hole Size (ft):			
Casing Size (ft):			
Casing Start Depth (ft):			
Casing End Depth (ft):			
Mid Type:			
Mid Weight (lb/gal):			
Mid Viscosity:			
KCL Correction Factor:			
Mid KCL Content (%):			
Comment:			

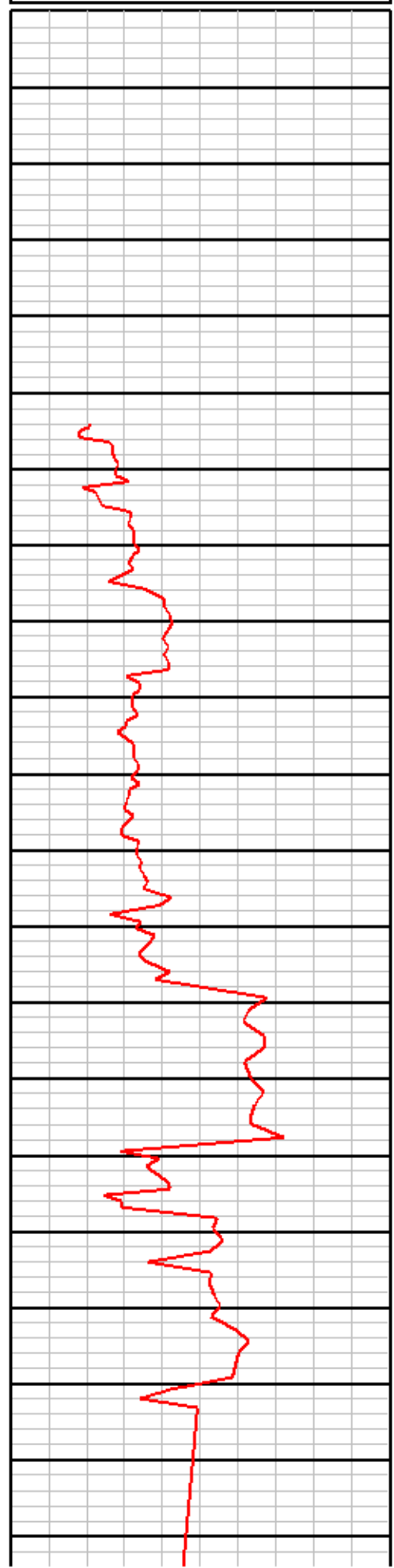
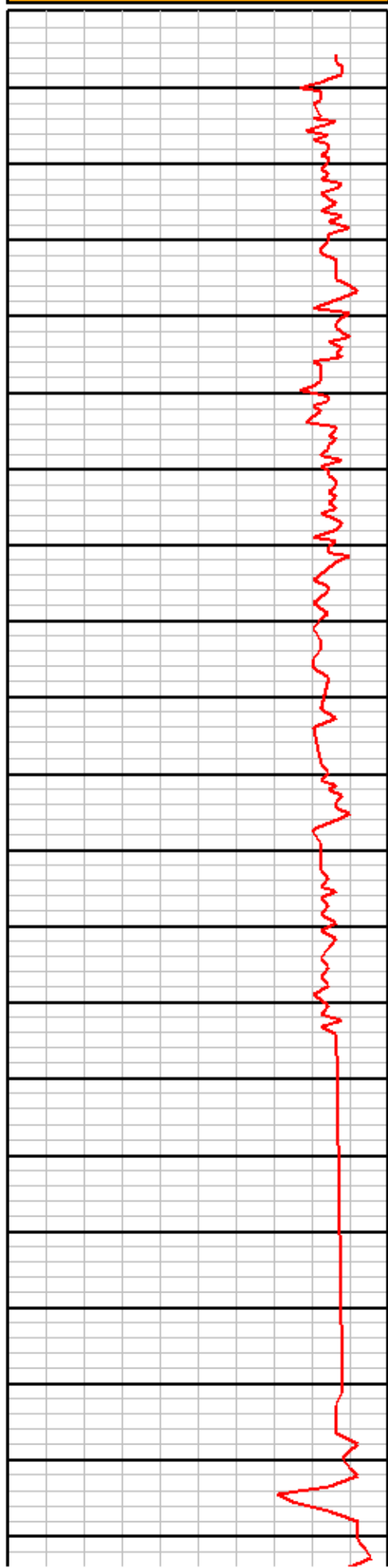


EQT
513056
Taylor
1130280

MD
1:240
Feet

0	Gamma (API)	250
250	Gamma (API)	500
500	Gamma (API)	750
750	Gamma (API)	1000

0	ROP (ft/hr)	150
150	ROP (ft/hr)	300



MD: 6692
INC: 0.5
AZM: 164

MD: 6723
INC: 1.8
AZM: 77.1

MD: 6754
INC: 4.3
AZM: 59

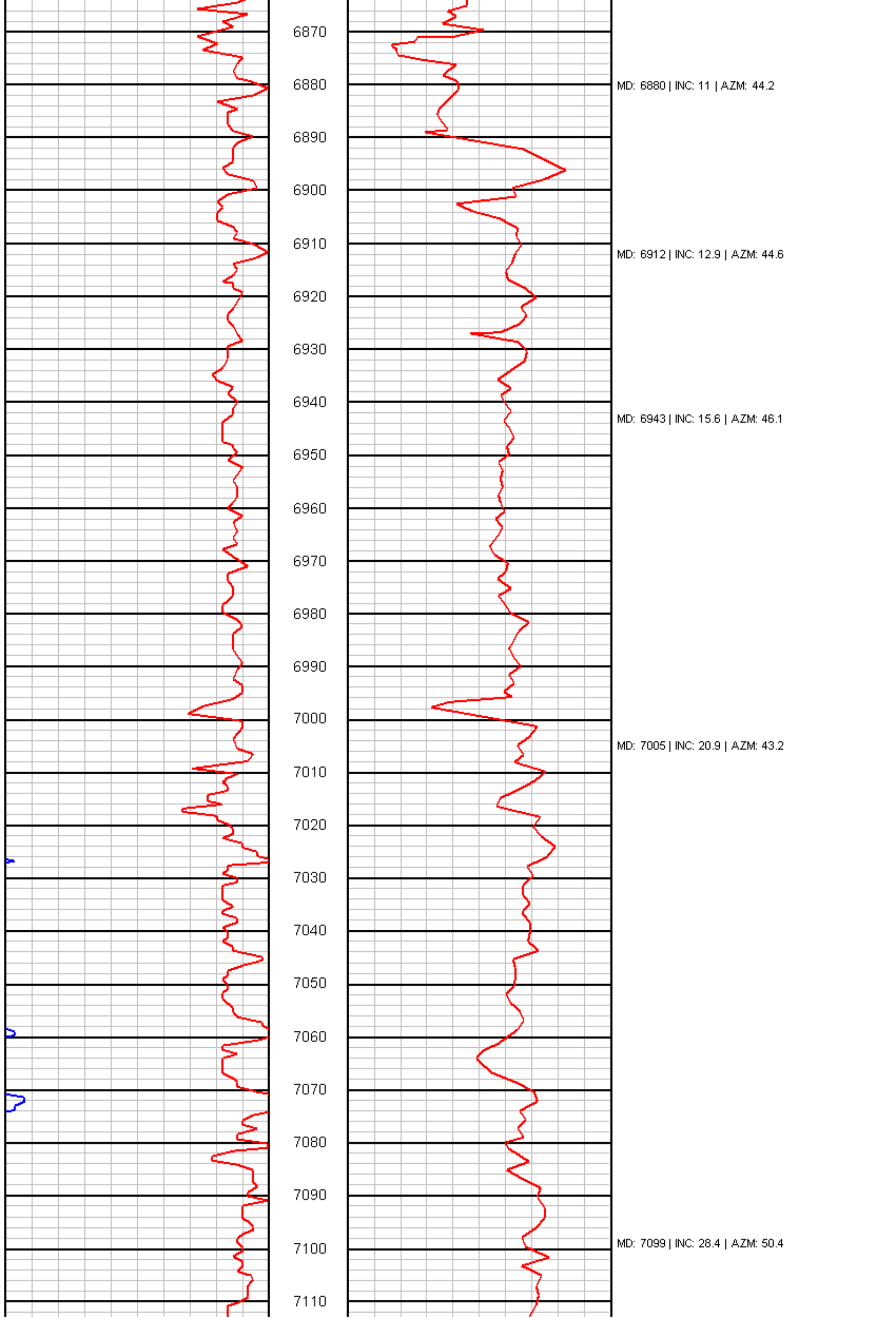
MD: 6786 | INC: 5.6 | AZM: 53.9

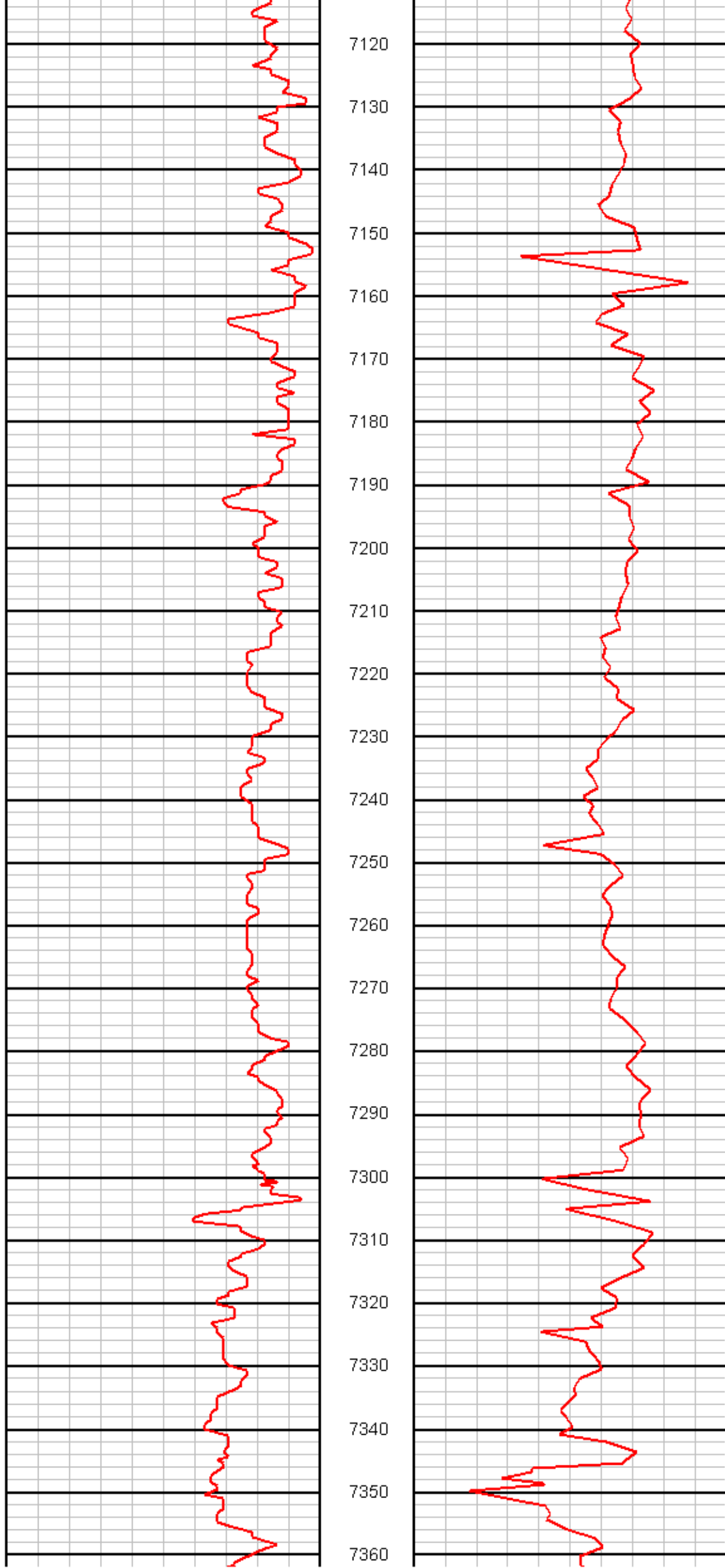
MD: 6817 | INC: 6.7 | AZM: 47.8

MD: 6849 | INC: 8.4 | AZM: 43.7



PHOENIX
TECHNOLOGY SERVICES





7120

7130

7140

7150

7160

7170

7180

7190

7200

7210

7220

7230

7240

7250

7260

7270

7280

7290

7300

7310

7320

7330

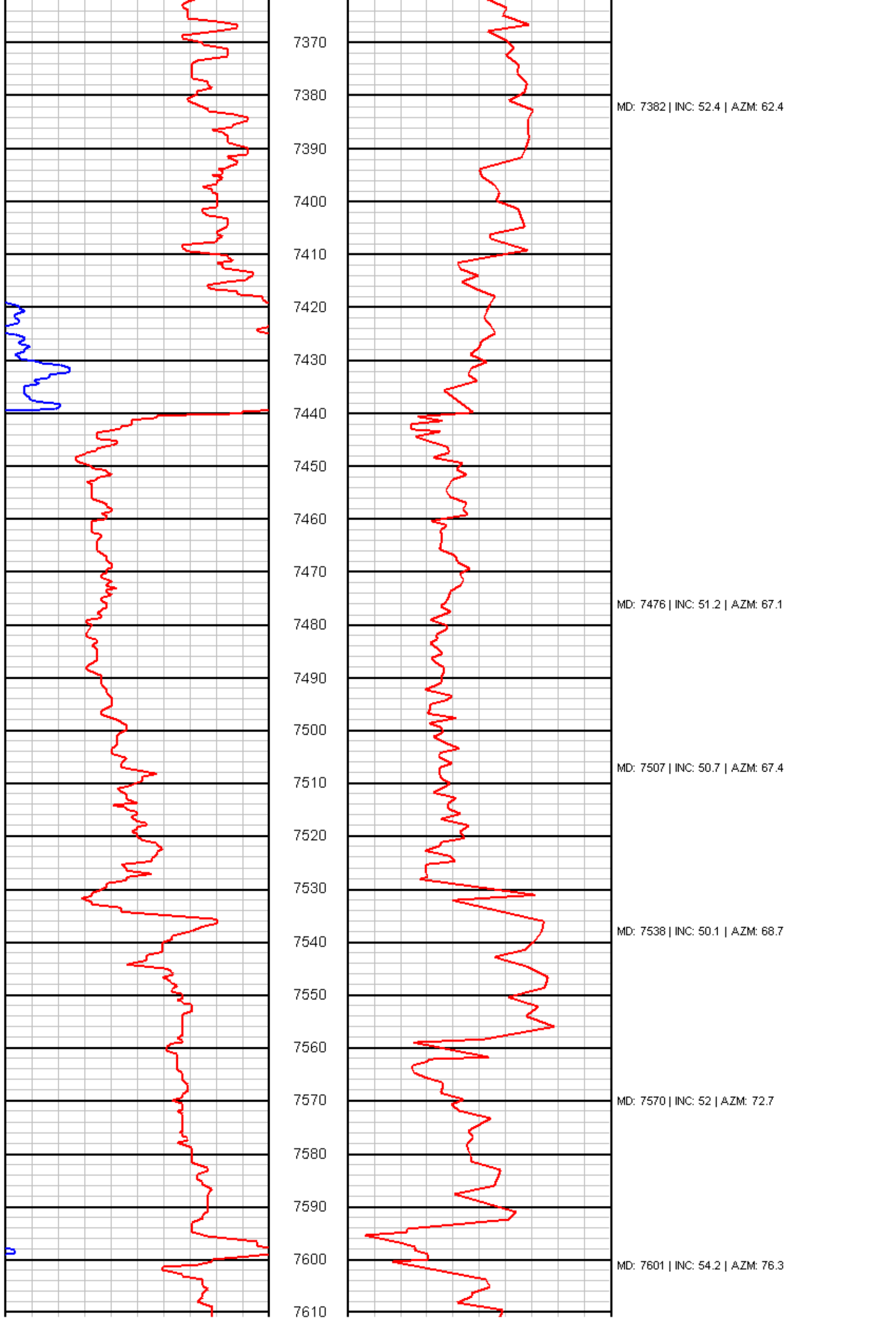
7340

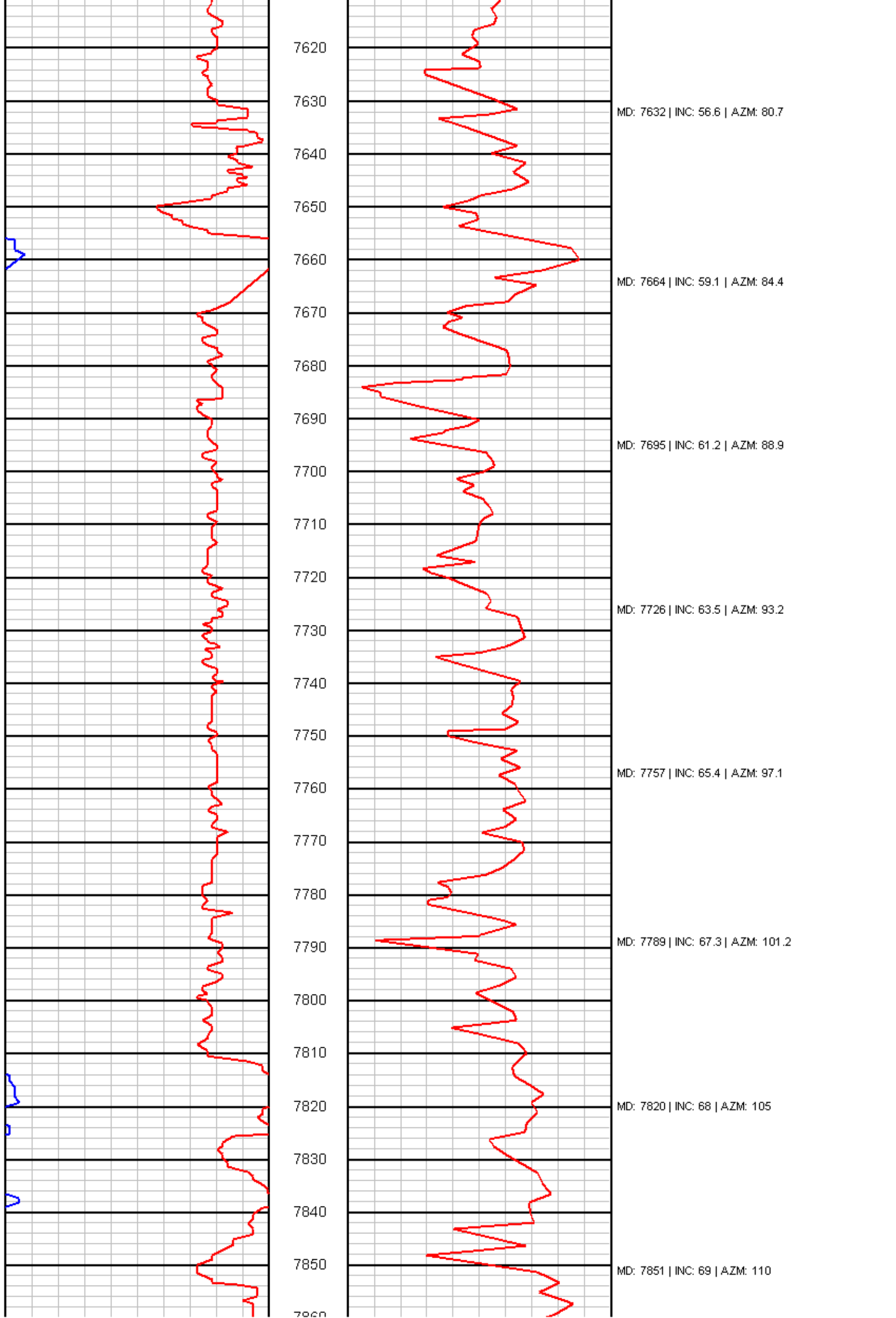
7350

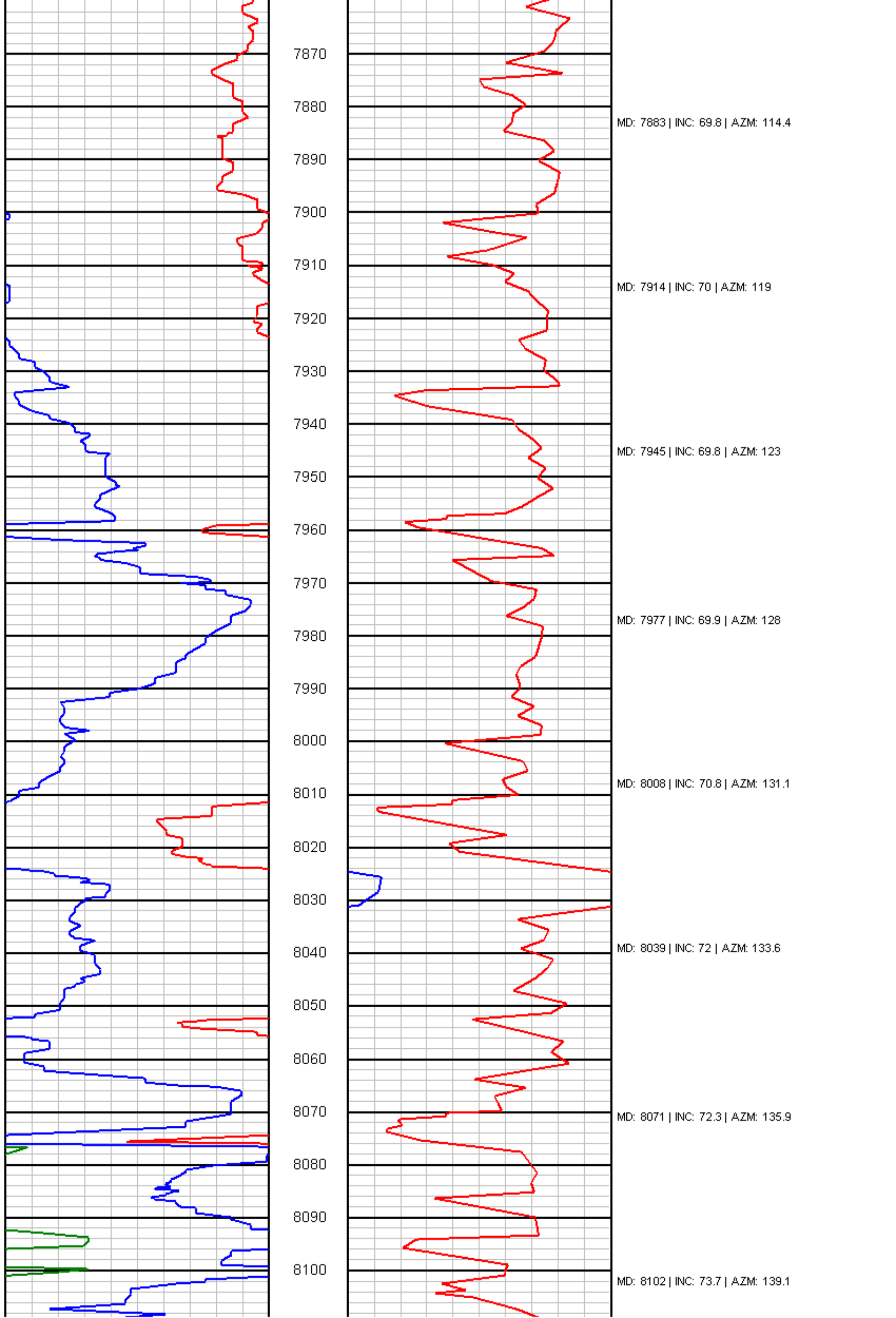
7360

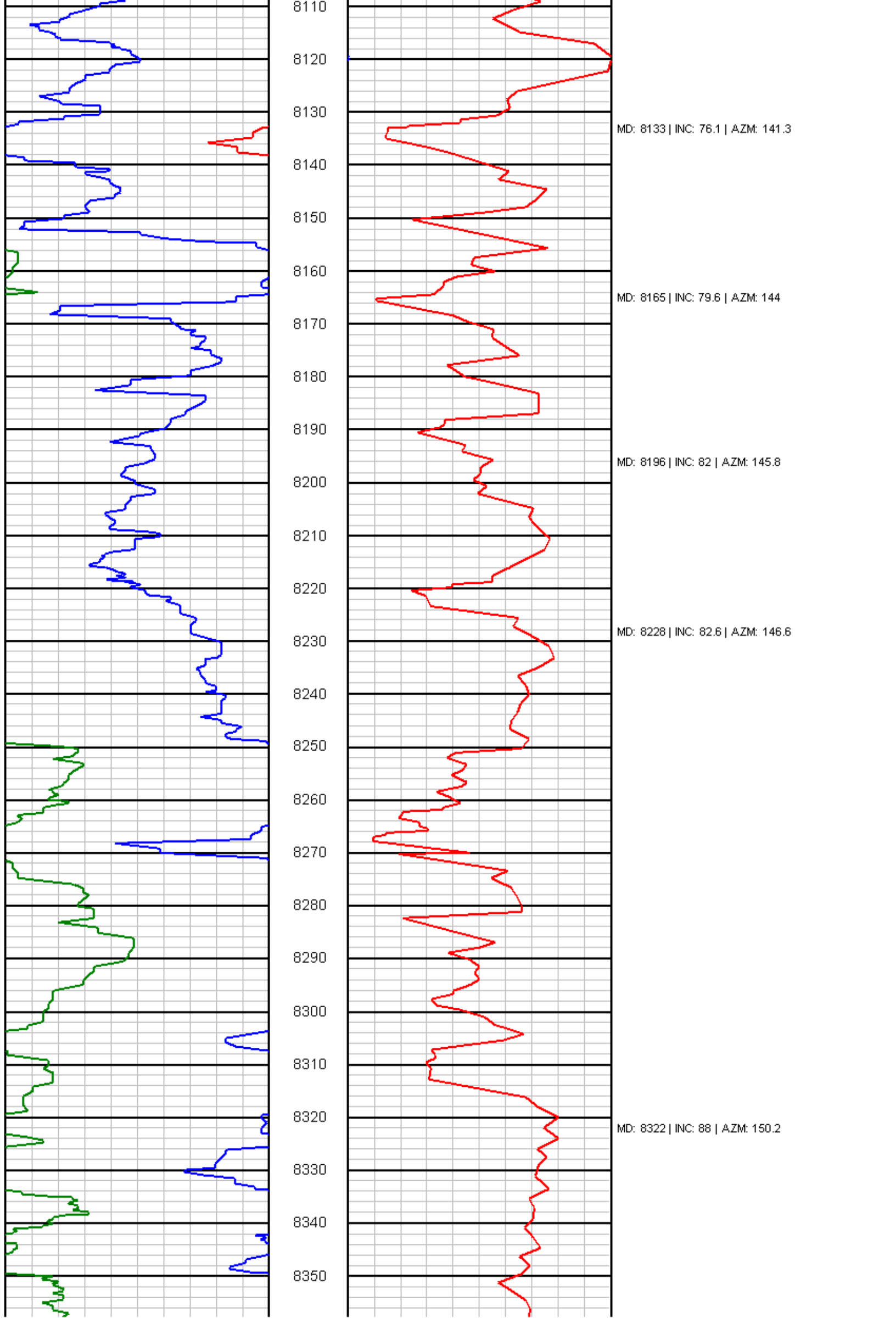
MD: 7193 | INC: 38.2 | AZM: 54.3

MD: 7288 | INC: 50.1 | AZM: 55.9









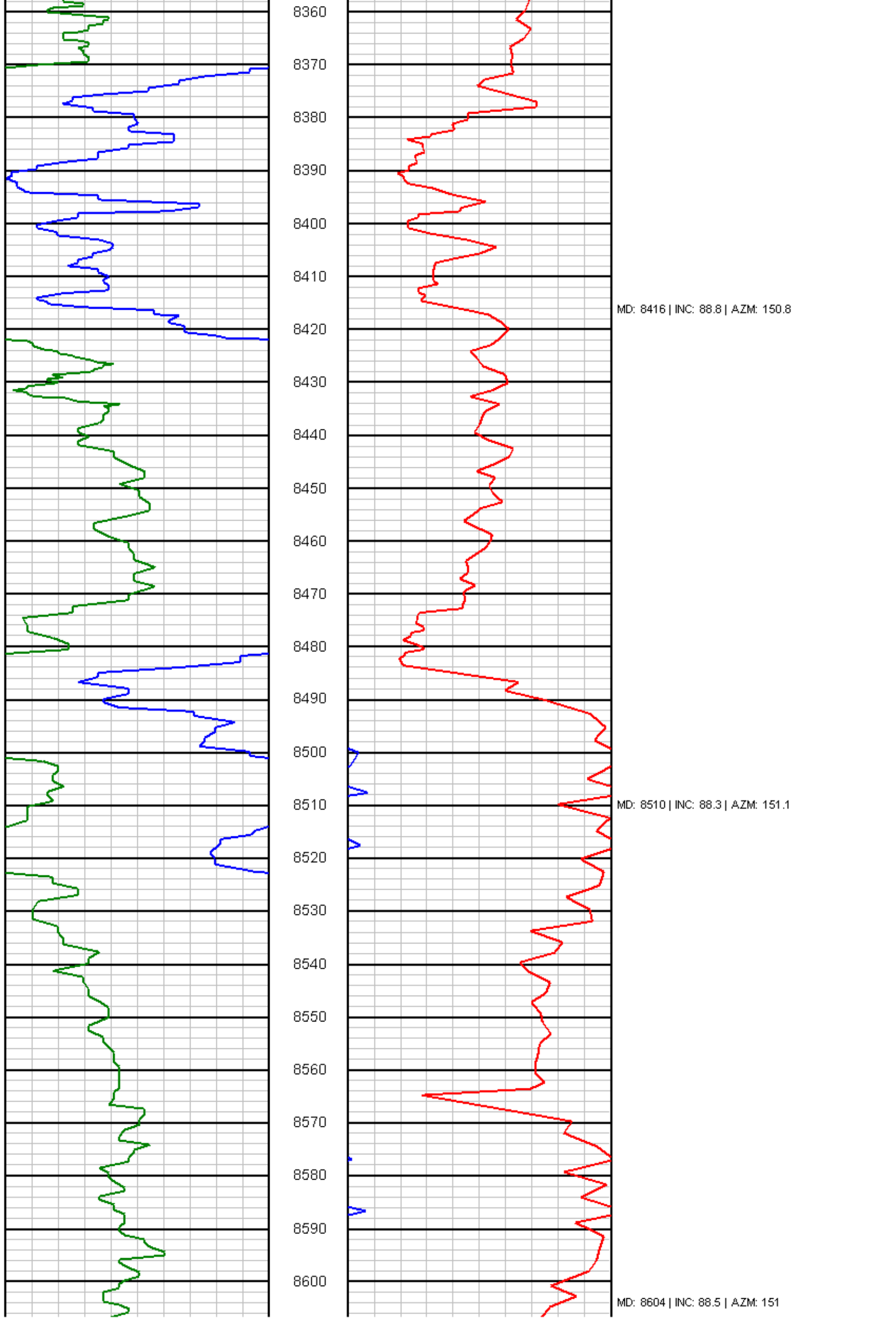
MD: 8133 | INC: 76.1 | AZM: 141.3

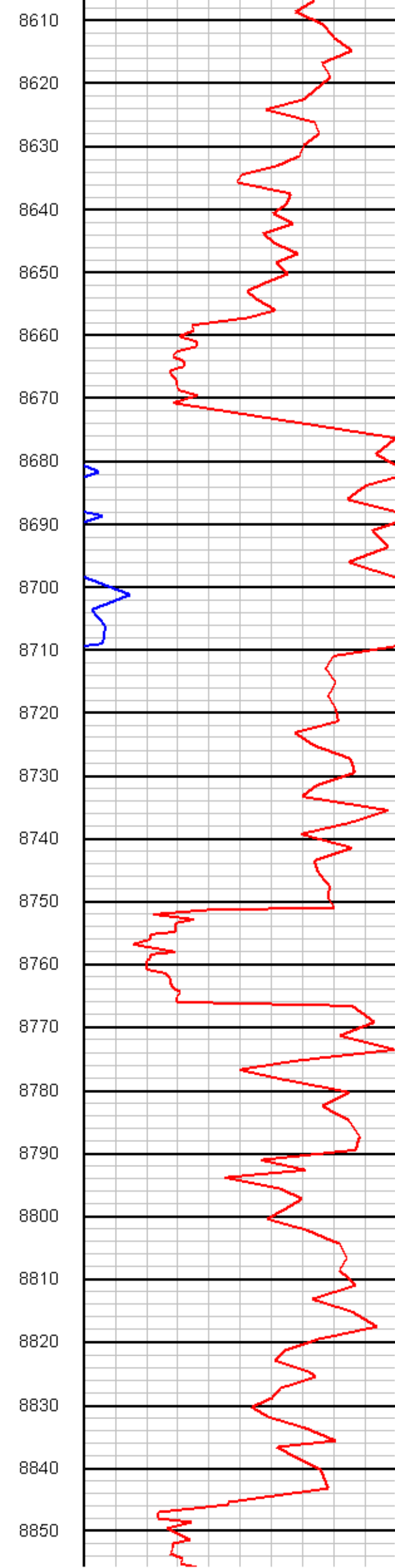
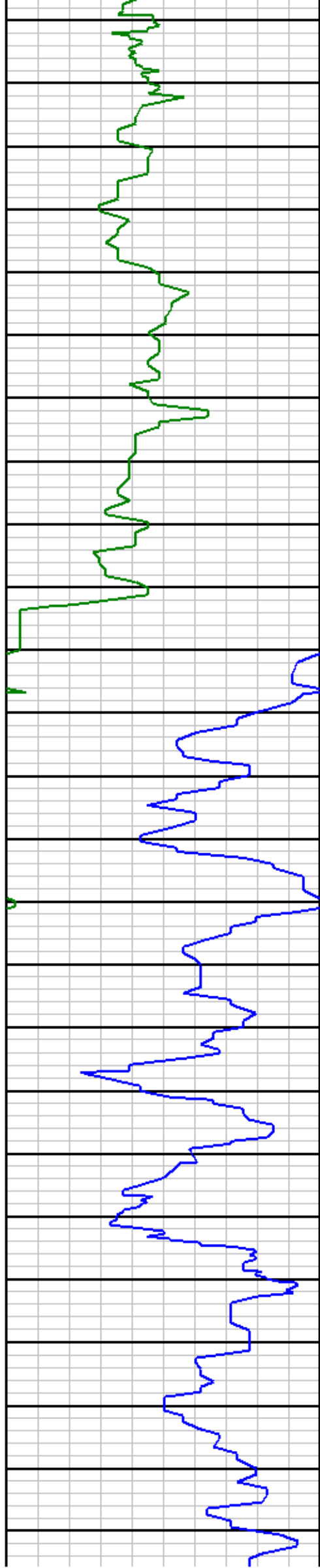
MD: 8165 | INC: 79.6 | AZM: 144

MD: 8196 | INC: 82 | AZM: 145.8

MD: 8228 | INC: 82.6 | AZM: 146.6

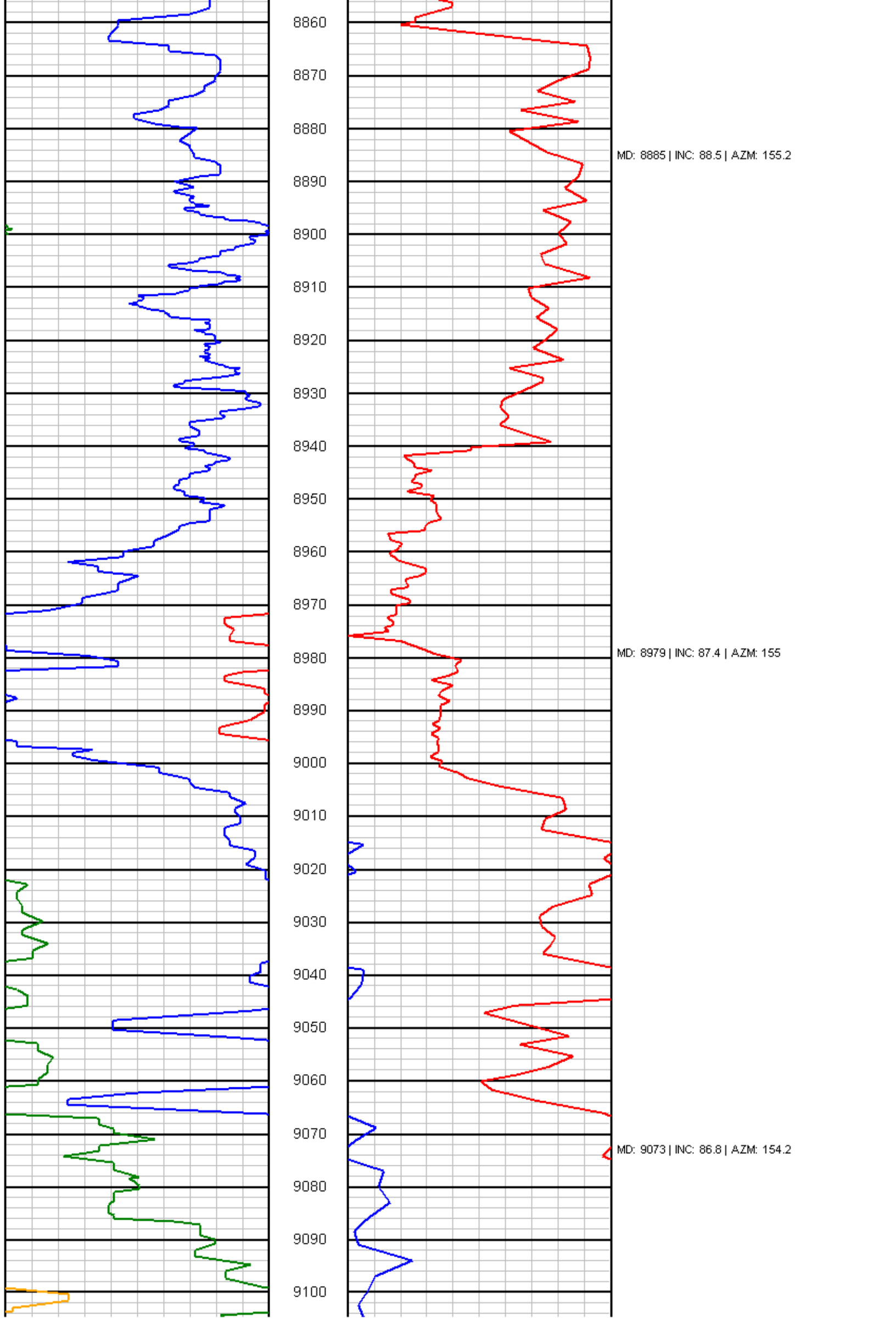
MD: 8322 | INC: 88 | AZM: 150.2

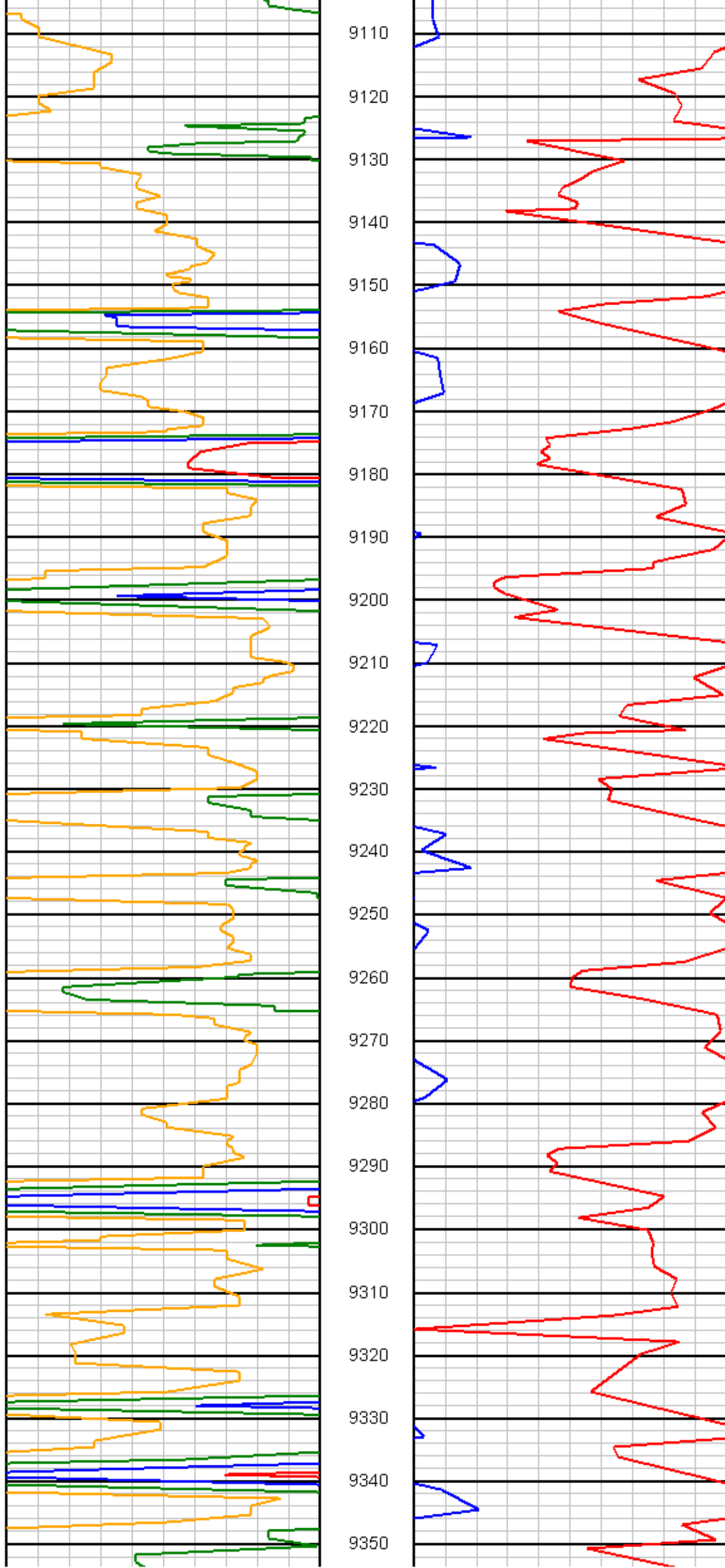




MD: 8698 | INC: 88 | AZM: 151.3

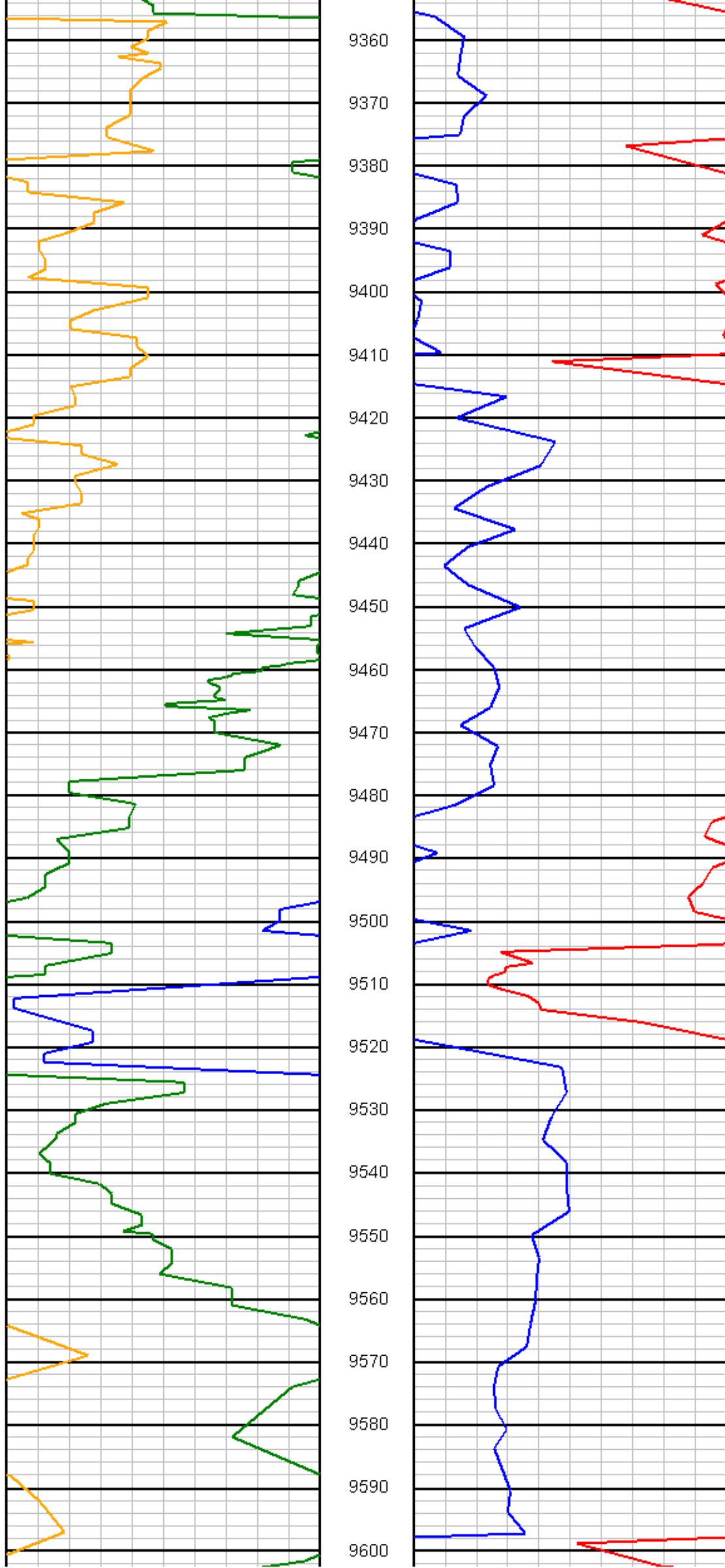
MD: 8792 | INC: 88.6 | AZM: 154.2





MD: 9168 | INC: 88.1 | AZM: 154.1

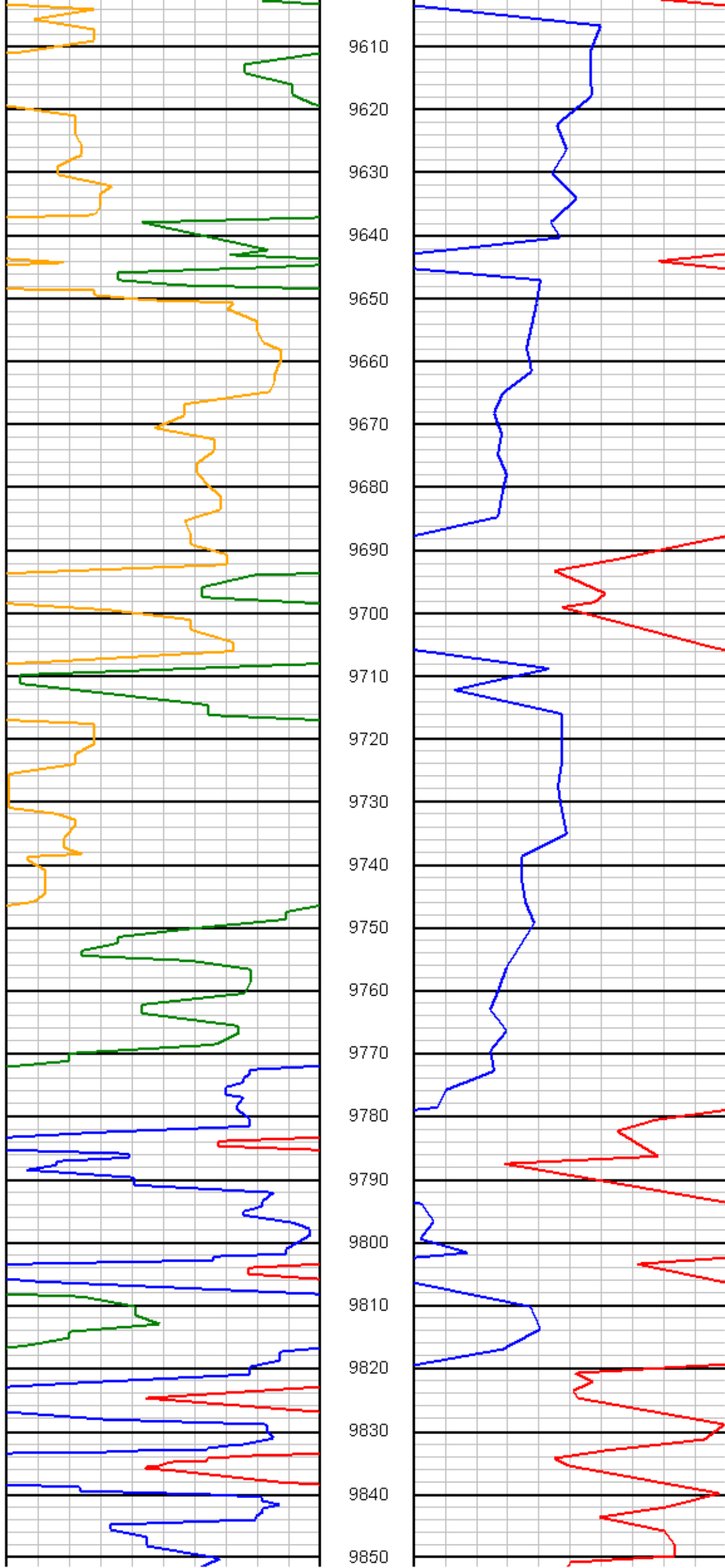
MD: 9262 | INC: 88.3 | AZM: 152.7



MD: 9356 | INC: 88.1 | AZM: 151.7

MD: 9450 | INC: 87.7 | AZM: 151.5

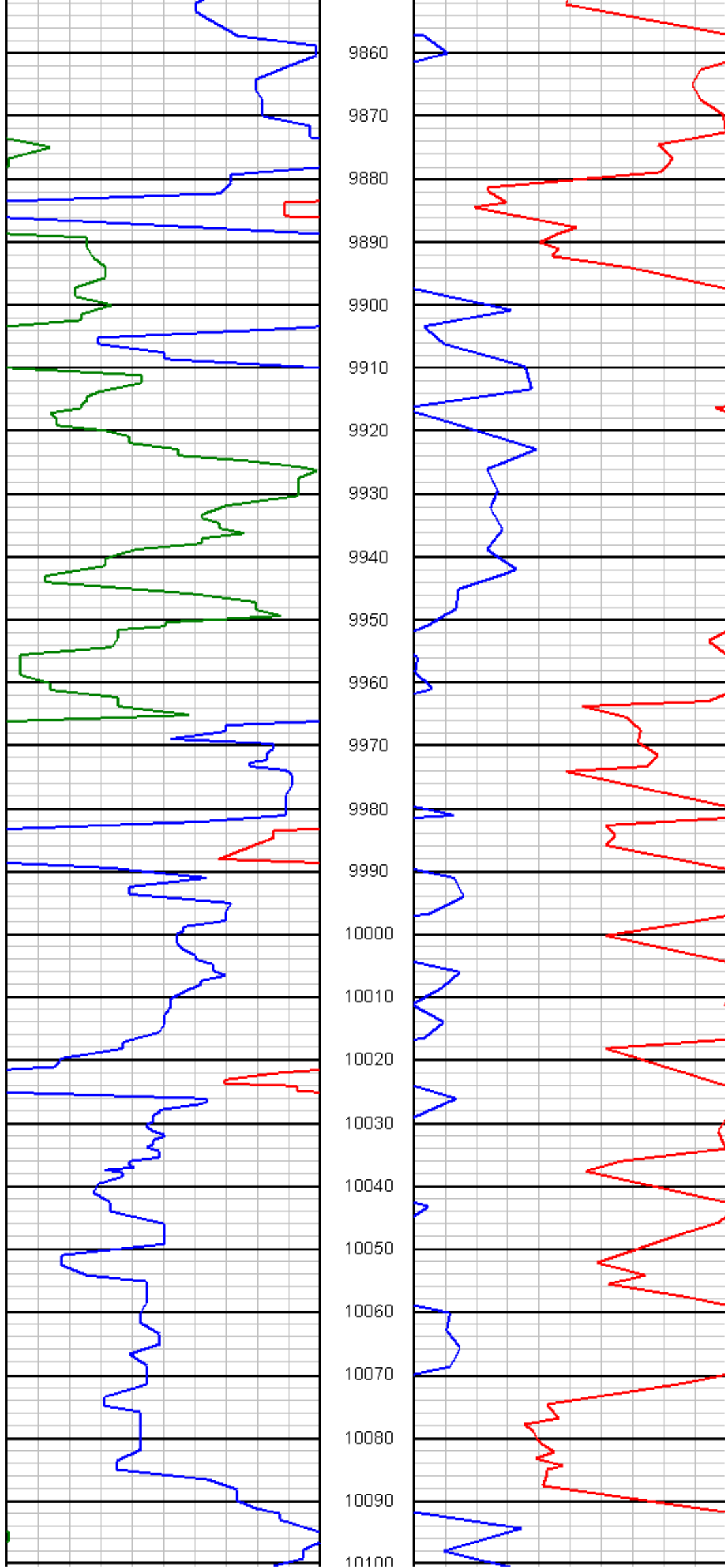
MD: 9544 | INC: 89.1 | AZM: 151.7



MD: 9638 | INC: 89 | AZM: 151.7

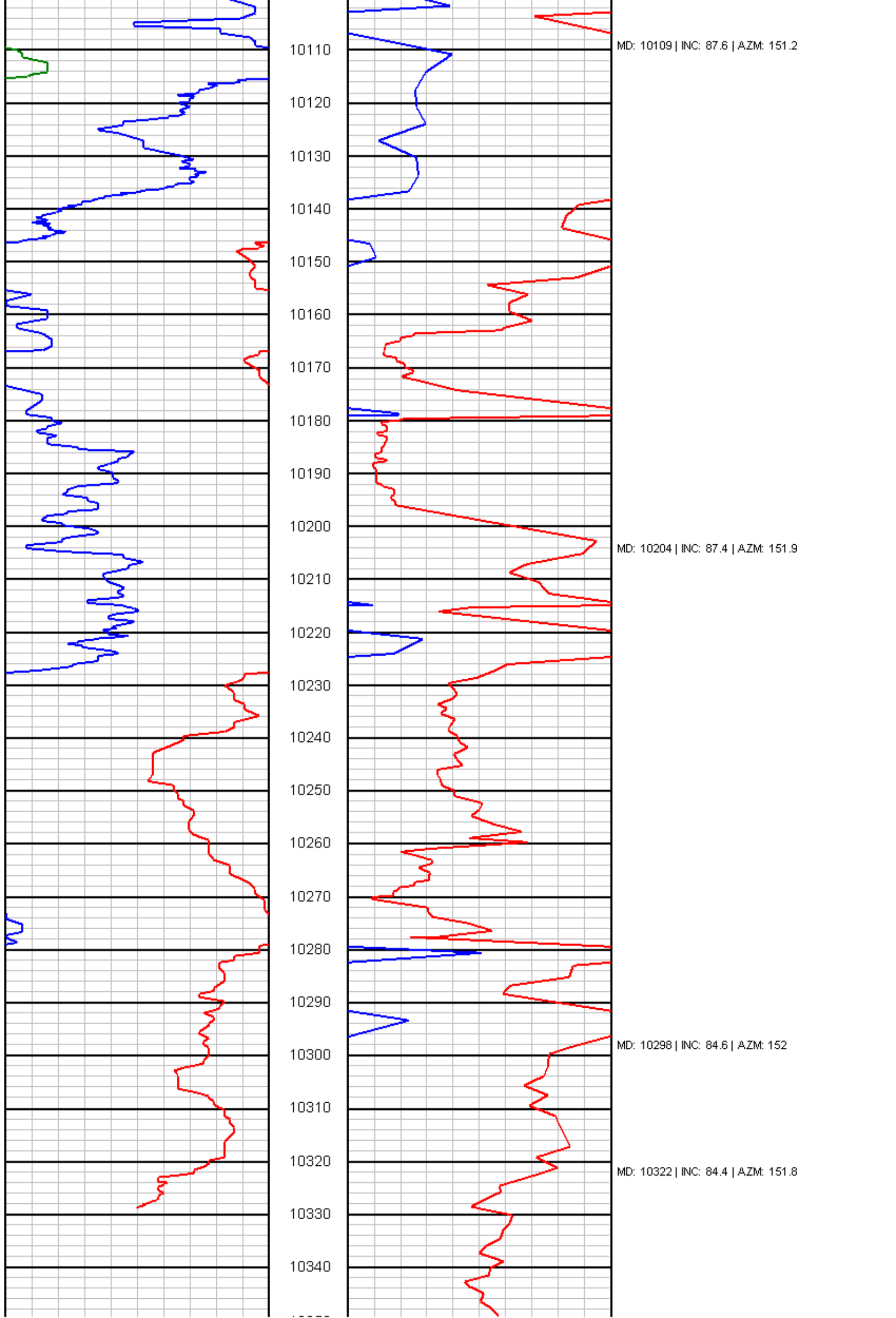
MD: 9733 | INC: 88.5 | AZM: 150.6

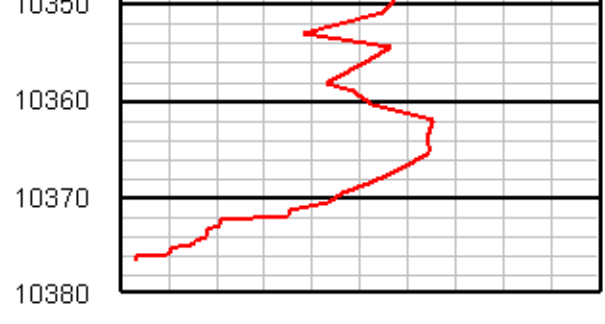
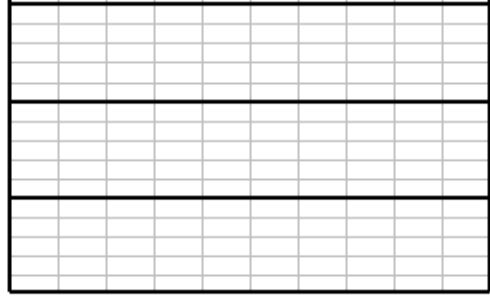
MD: 9827 | INC: 88.9 | AZM: 151.1



MD: 9921 | INC: 89 | AZM: 152.9

MD: 10015 | INC: 89.5 | AZM: 152





MD: 10376 | INC: 84.4 | AZM: 151.8