



MID
1:240
Feet

Client: FOT
Well Name: 513132
Country: Taylor

MWD Gamma

Unique ID/API: 47-9101230

Company Representative

Surface Location: Taylor Co.

Bill Teejleff Lotton

Country: U.S.A

State: West Virginia

Geologist

Dane Fischer

Rig Name: 640E

Latitude: 39° 19' 18.862N

Longitude: 80° 8' 28.598W

License/Permit#: 01230

Directional Drillers

Job No: 1130487

Permanent Datum: Mean Sea

Drilling Measurement From: Drill Floor

Mark Davis
Toby Barrick
Erik Johnsen

GL: 1328

KB: 15.41

Bob Dillon
Dave Sundell
Derek Means

Spud Date: August 19, 2011

Print Date: September 5, 2011

Log Start Depth: 6330

Log End Depth: 10395

Bottom Hole Temp: 158 °F

MWD Operator

Leg Name

Comments:

PHOENIX TECHNOLOGY SERVICES LP (PHOENIX) DOES NOT MAKE AND EXPRESSLY DISCLAIMS ALL WARRANTIES, REPRESENTATIONS AND CONDITIONS, WITH RESPECT TO THE INFORMATION CONTAINED IN THIS DOCUMENT, WHETHER ORAL OR WRITTEN, EXPRESS OR IMPLIED OR ARISING FROM CONTRACT OR STATUTE INCLUDING, WITHOUT LIMITATION, THE IMPLIED WARRANTIES OF MERCHANTABILITY, ACCURACY AND FITNESS FOR A PARTICULAR PURPOSE. ANYONE USING THIS INFORMATION DOES SO AT THEIR OWN RISK AND ACKNOWLEDGES AND AGREES THAT PHOENIX SHALL NOT BE LIABLE FOR ANY ERROR, OMISSION, DEFECT, DELAY, OR NON-COMPLIANCE IN THE INFORMATION AND WITHOUT LIMITING THE FOREGOING, PHOENIX DOES NOT WARRANT THAT THE INFORMATION OR THE USE THEREOF WILL BE FREE OF ALL ERRORS OR THAT IT DOES NOT INFRINGE ANY THIRD PARTY RIGHTS. ANYONE USING THE INFORMATION AGREES TO INDEMNIFY AND HOLD PHOENIX HARMLESS FROM ALL CLAIMS, ACTIONS, COSTS (INCLUDING LEGAL COSTS) ON A SOLIDUM AND HIS/OWN CLIENT BASIS, AND LIABILITIES ARISING FROM OR IN CONNECTION WITH THE USE OF THE INFORMATION.

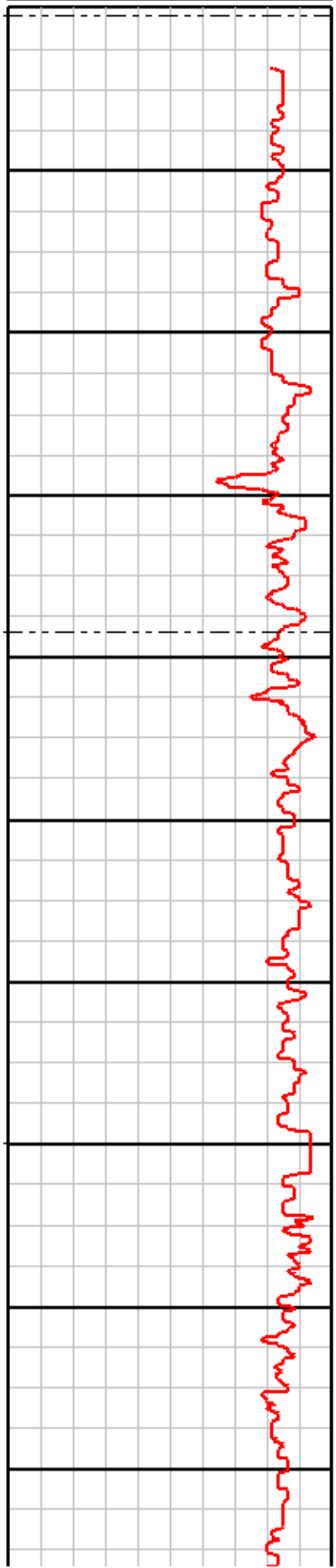
BitRun:	1	2	3
Start Depth (ft):	6384	7004.7	8228.2
End Depth (ft):	7004.7	8228.2	10385.24
Start Date:	2011.08/19	2011.09/01	2011.09/03
End Date:	2011.09/01	2011.09/03	2011.09/05
Gamma Scale Factor:	4.237	4.237	4.083
Snubey-to-Bit (FTB):	53	54	54
Gamma-to-Bit (GTB):	48	48	49
Tool Carrier ID (ft):	3	3	3
Tool Carrier OD (ft):	5	5	5
Hole Size (ft):	8.5	8.5	7.875
Casing Size (ft):	9.625	9.625	9.625
Casing Start Depth (ft):	0	0	0
Casing End Depth (ft):	2628	2680	2680
Mid Type:	walk base	walk base	walk base
Mid Weight (lb/gal):	12.3	12.3	12.3
Mid Viscosity:	45	45	45
KCL Correction Factor:	0.000	0.000	0.000
Mid KCL Content (%):	0.001	0.001	0.001
Comment:	-	-picked up new motor	-pck up lateral assembly

BitRun:			
Start Depth (ft):			
End Depth (ft):			
Start Date:			
End Date:			
Gamma Scale Factor:			
Snubey-to-Bit (FTB):			
Gamma-to-Bit (GTB):			
Tool Carrier ID (ft):			
Tool Carrier OD (ft):			
Hole Size (ft):			
Casing Size (ft):			
Casing Start Depth (ft):			
Casing End Depth (ft):			
Mid Type:			
Mid Weight (lb/gal):			
Mid Viscosity:			
KCL Correction Factor:			
Mid KCL Content (%):			
Comment:			

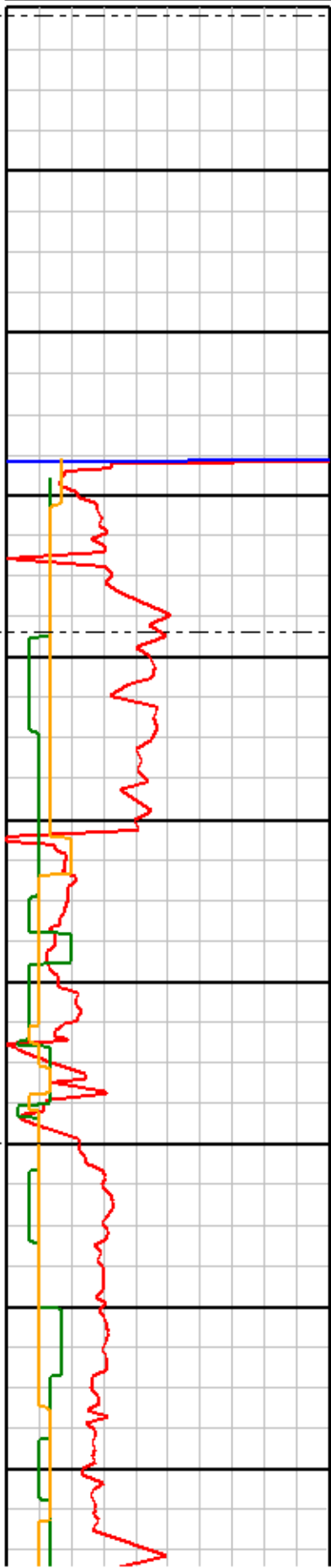
0	Gamma (API)	250
250	Gamma (API)	500
500	Gamma (API)	750
750	Gamma (API)	1000

1:240ft
MD

0	ROP (ft/hr)	175
175	ROP (ft/hr)	350
0	X-Y Axis Vibration (g)	30
0	Z Axis Vibration (g)	30



6330
6350
6370
6390
6410
6430
6450
6478
6490
6510



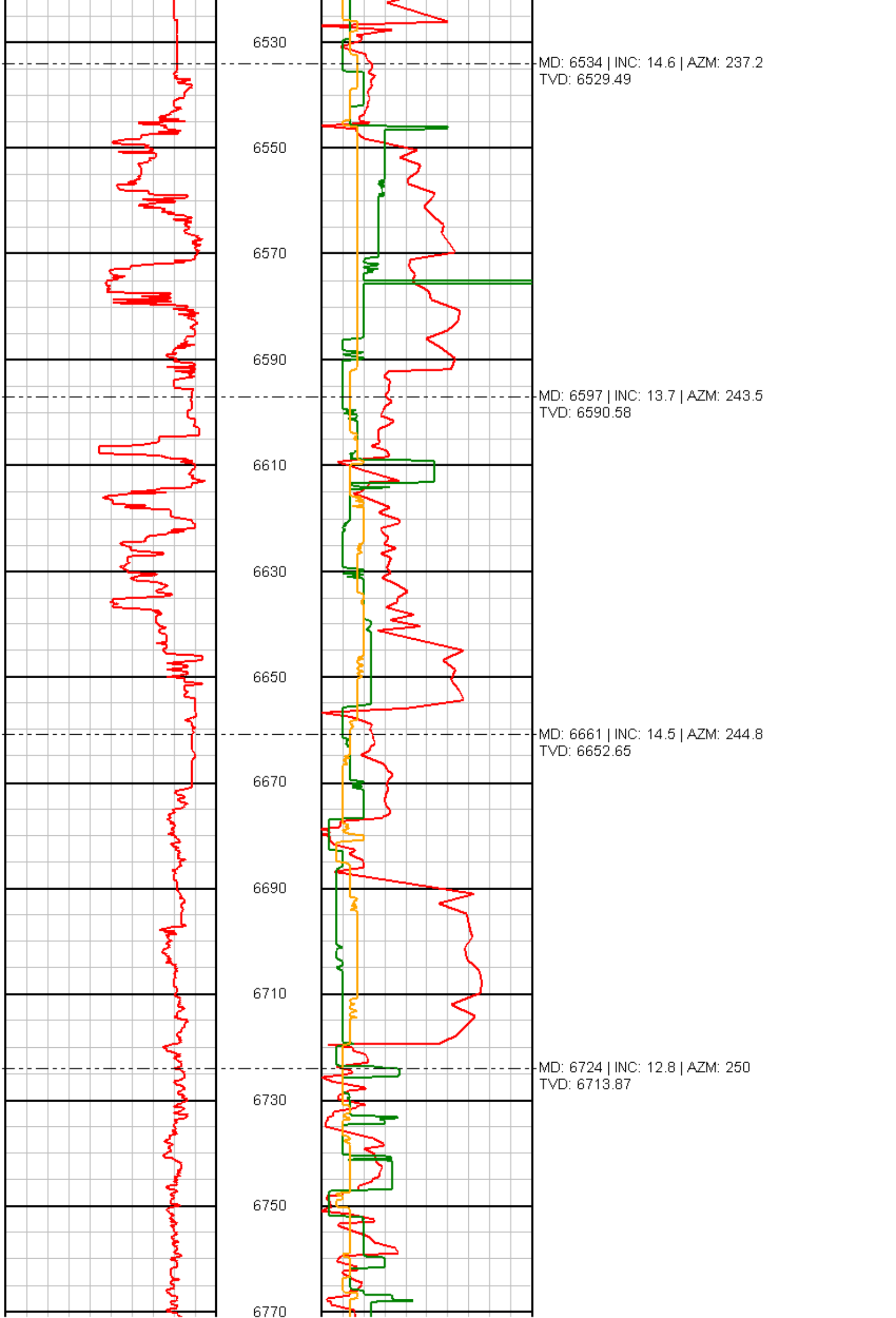
MD: 6331
INC: 1
AZM: 184.6
TVD: 6327.96

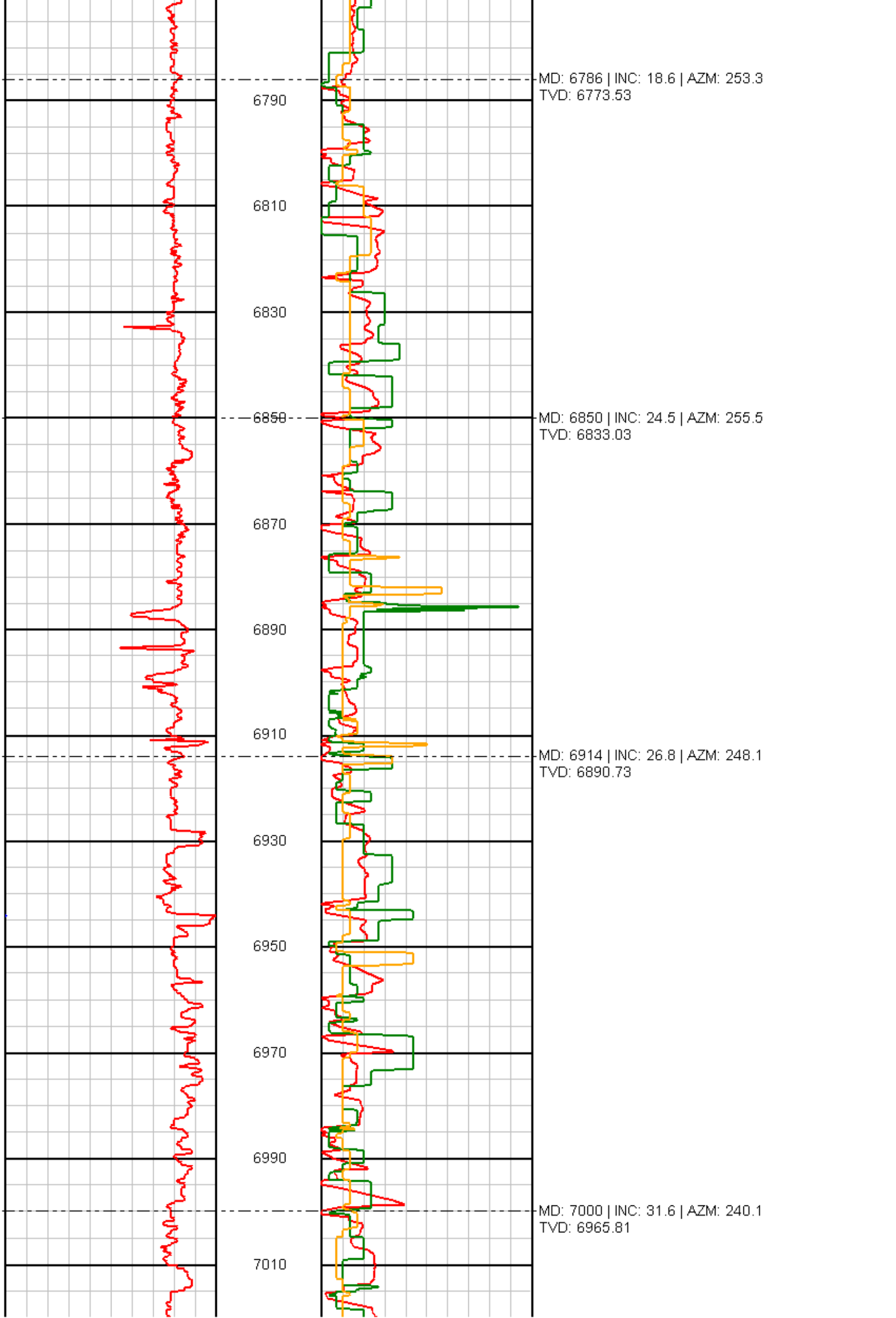
MD: 6407
INC: 0.6
AZM: 194.2
TVD: 6403.95

MD: 6470 | INC: 7.8 | AZM: 228.2
TVD: 6466.74



PHOENIX
TECHNOLOGY SERVICES





MD: 6786 | INC: 18.6 | AZM: 253.3
TVD: 6773.53

6790

6810

6830

6850

MD: 6850 | INC: 24.5 | AZM: 255.5
TVD: 6833.03

6870

6890

6910

MD: 6914 | INC: 26.8 | AZM: 248.1
TVD: 6890.73

6930

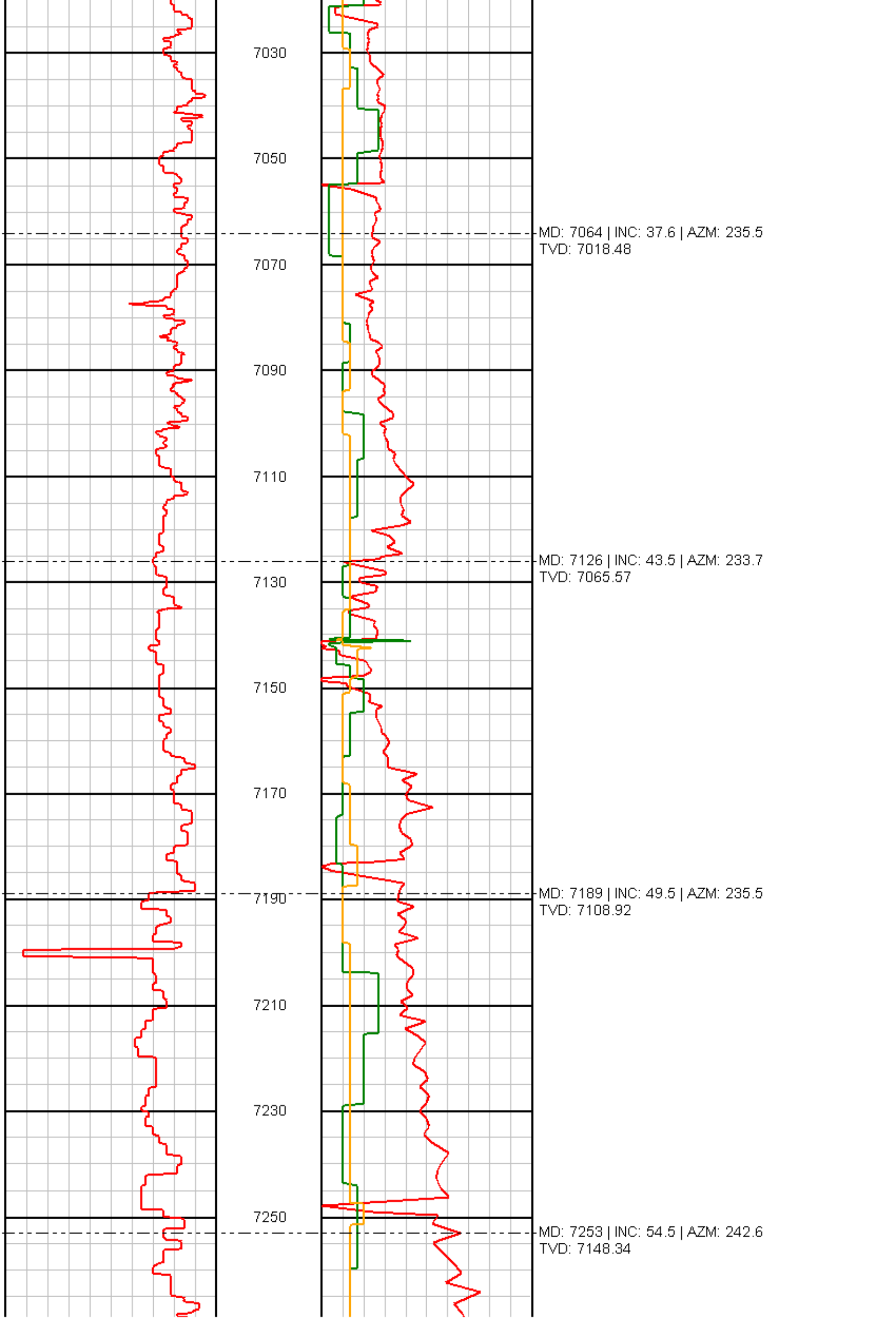
6950

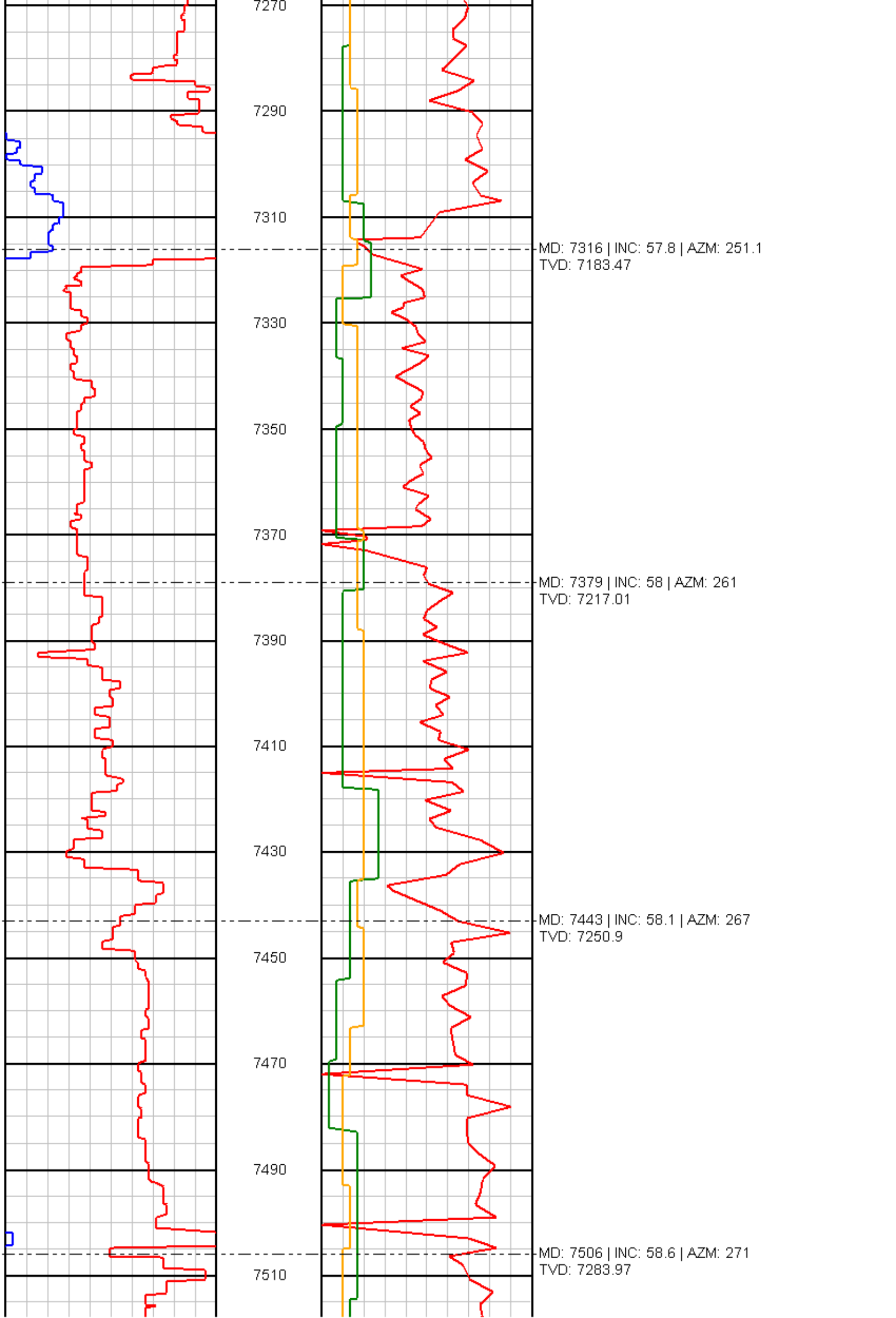
6970

6990

MD: 7000 | INC: 31.6 | AZM: 240.1
TVD: 6965.81

7010





7270

7290

7310

MD: 7316 | INC: 57.8 | AZM: 251.1
TVD: 7183.47

7330

7350

7370

MD: 7379 | INC: 58 | AZM: 261
TVD: 7217.01

7390

7410

7430

MD: 7443 | INC: 58.1 | AZM: 267
TVD: 7250.9

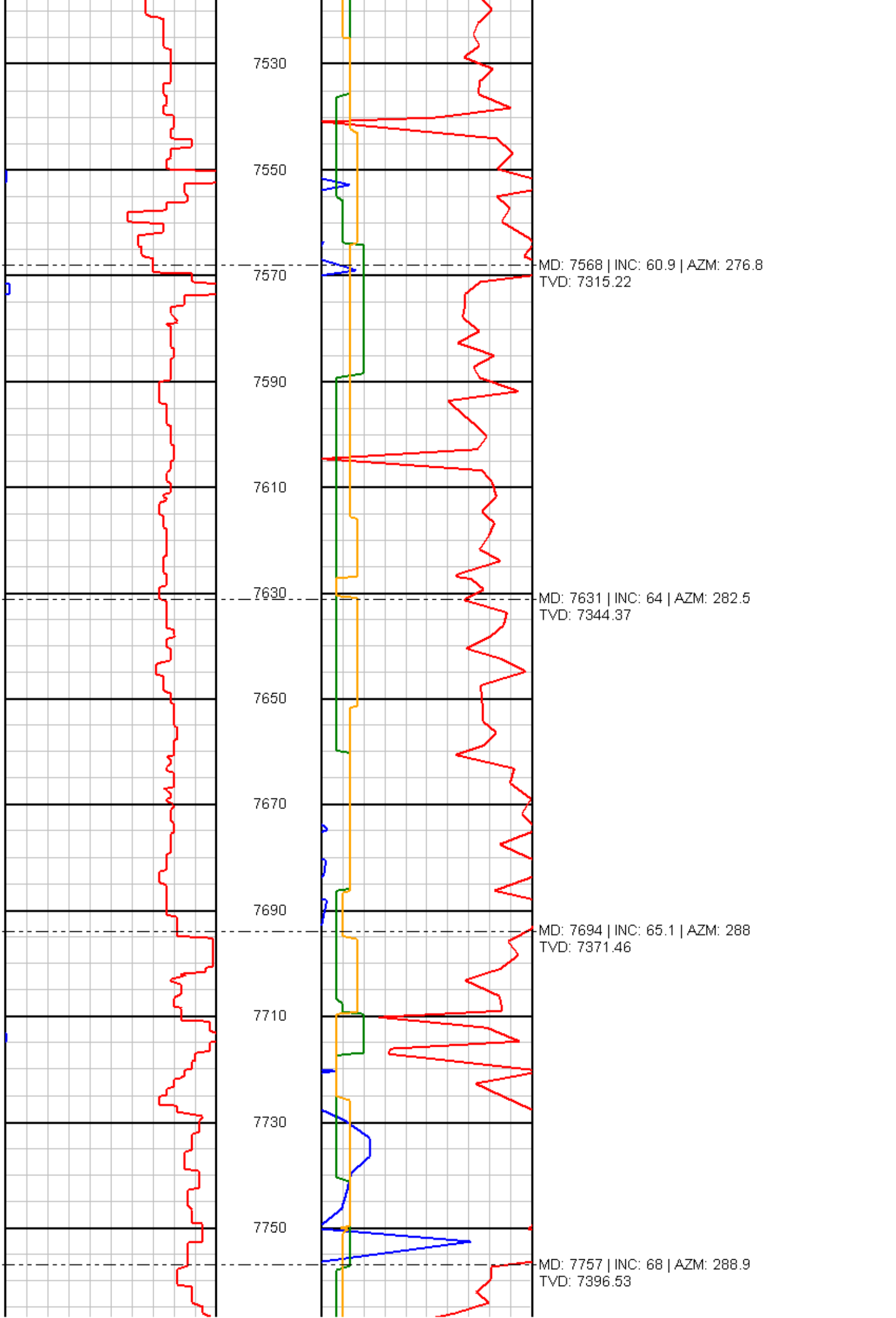
7450

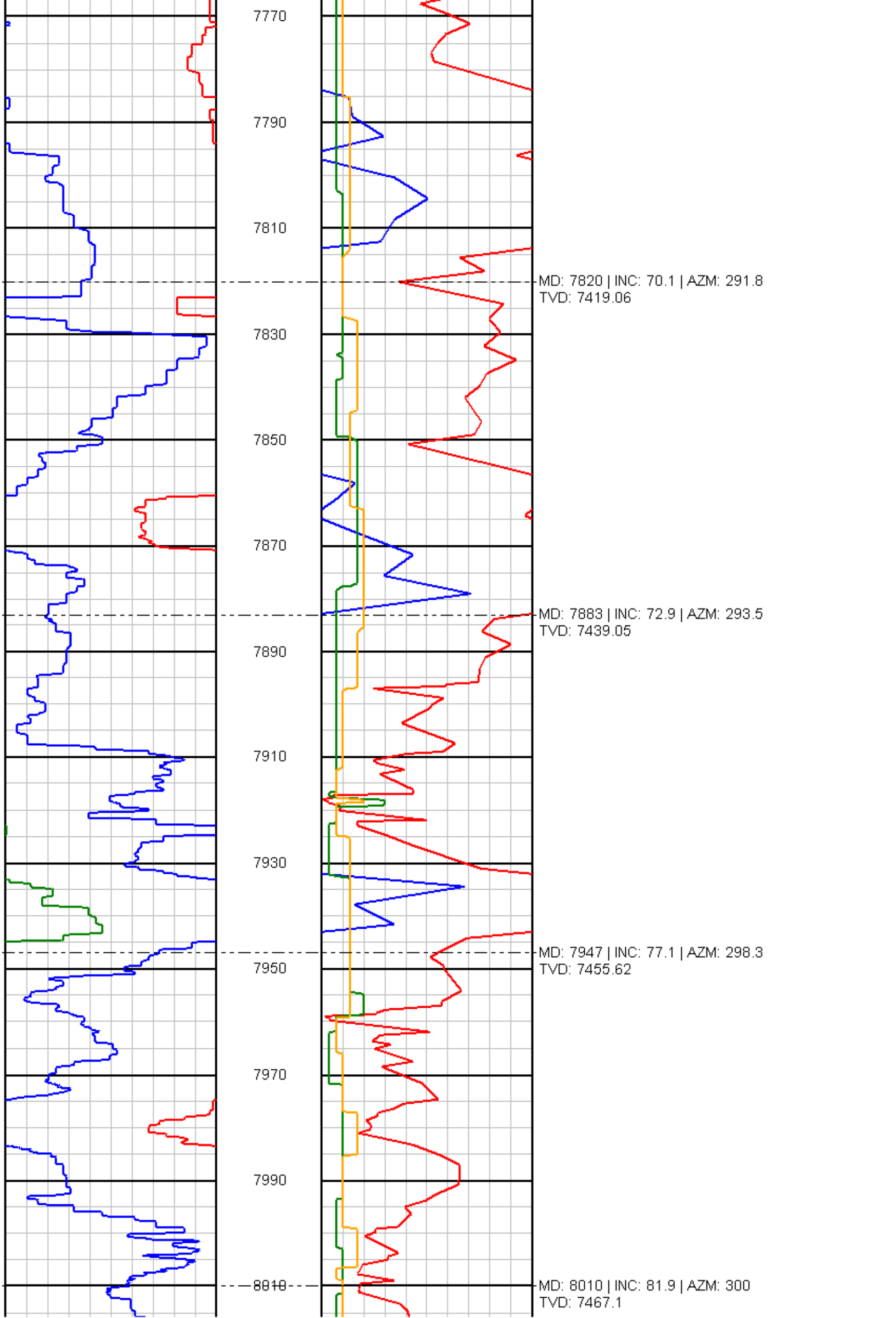
7470

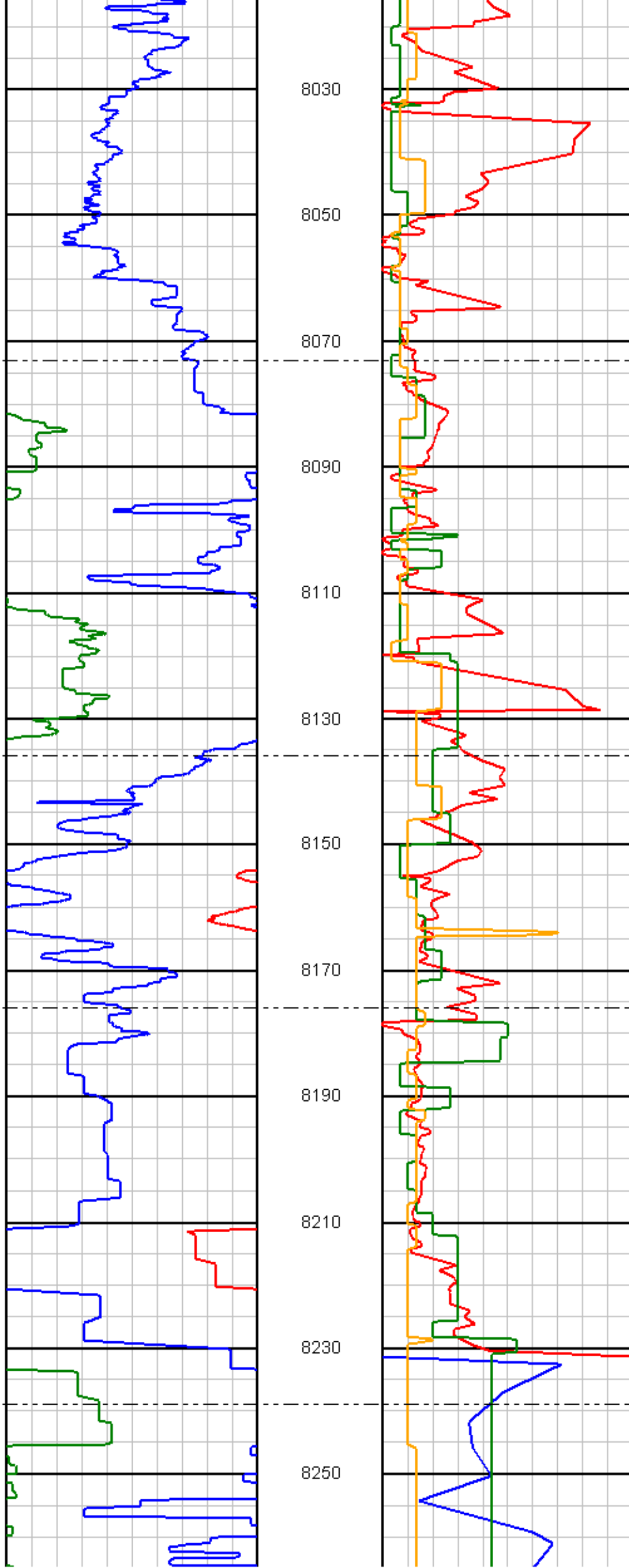
7490

7510

MD: 7506 | INC: 58.6 | AZM: 271
TVD: 7283.97





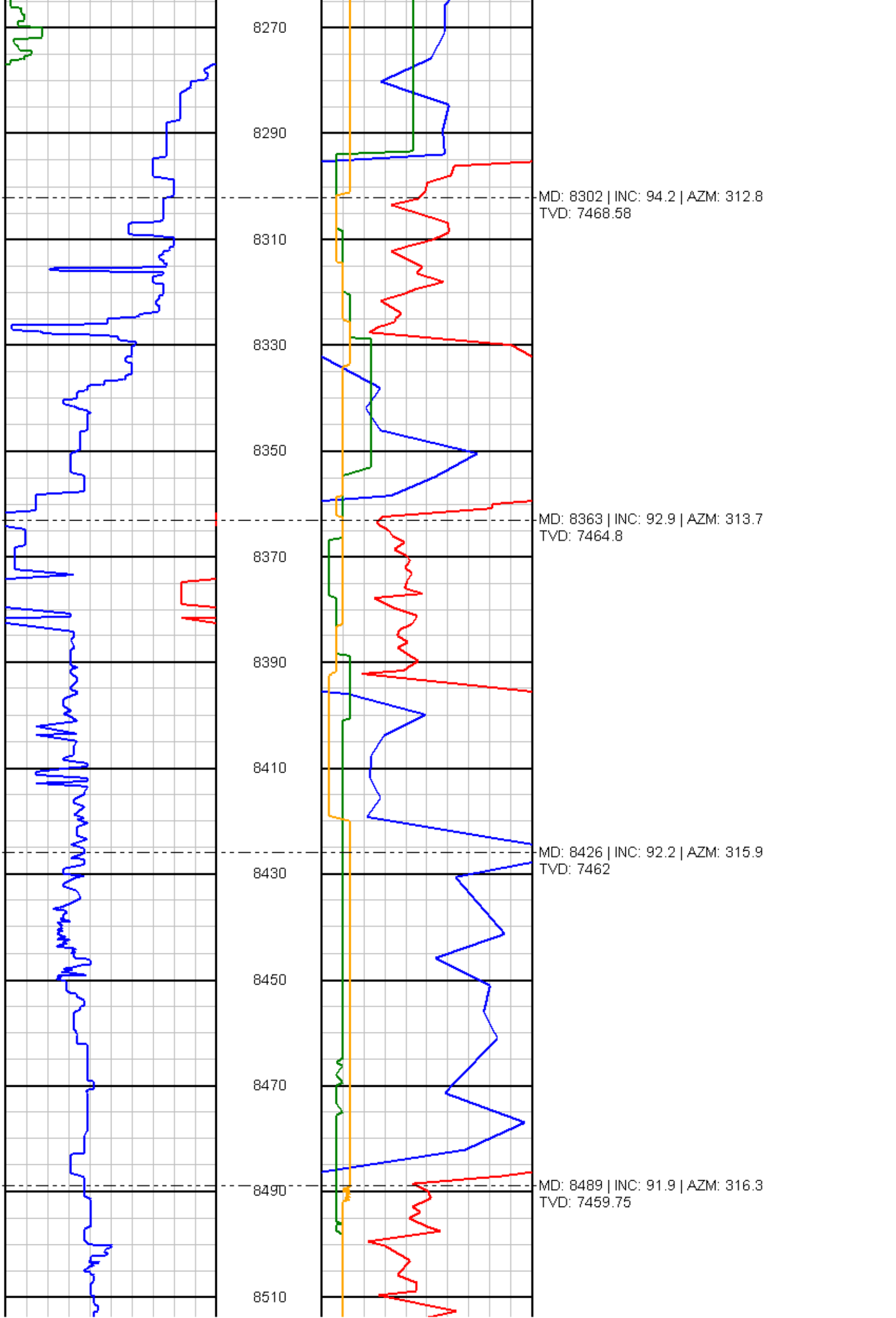


MD: 8073 | INC: 85.9 | AZM: 305.3
TVD: 7473.8

MD: 8136 | INC: 88.4 | AZM: 307.3
TVD: 7476.93

MD: 8176 | INC: 90.5 | AZM: 309.9
TVD: 7477.31

MD: 8239 | INC: 95.6 | AZM: 312.8
TVD: 7473.96



8270

8290

MD: 8302 | INC: 94.2 | AZM: 312.8
TVD: 7468.58

8310

8330

8350

MD: 8363 | INC: 92.9 | AZM: 313.7
TVD: 7464.8

8370

8390

8410

MD: 8426 | INC: 92.2 | AZM: 315.9
TVD: 7462

8430

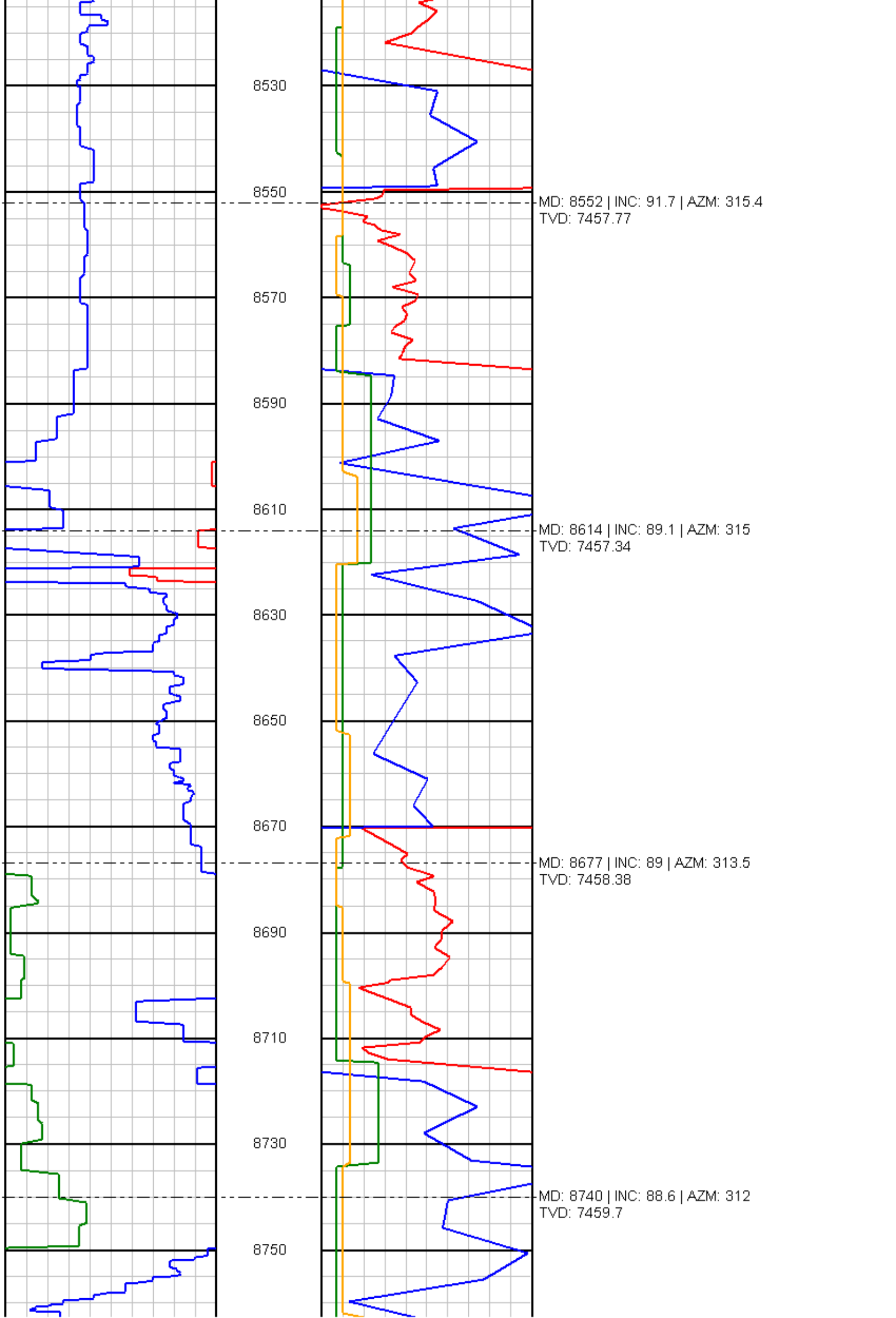
8450

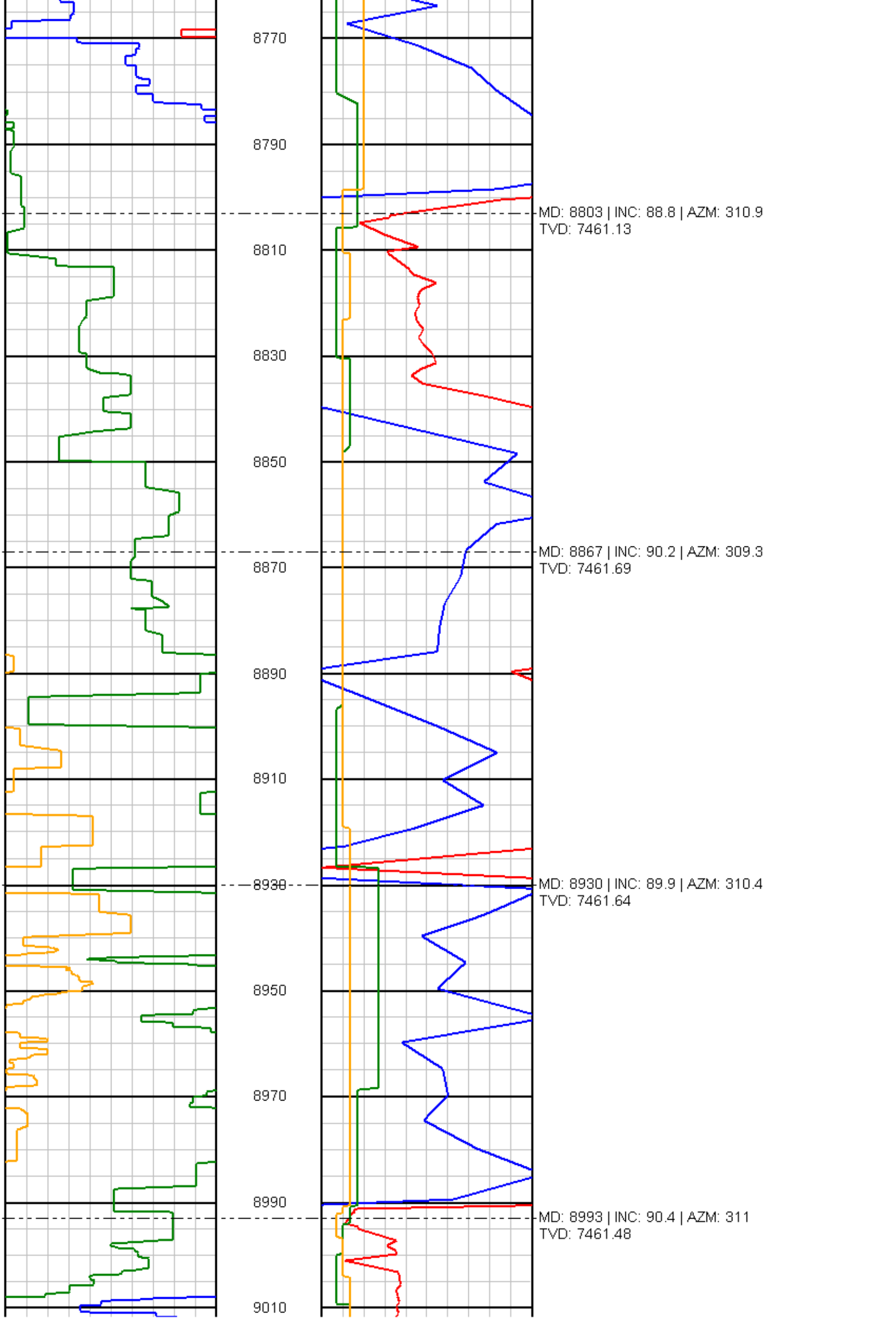
8470

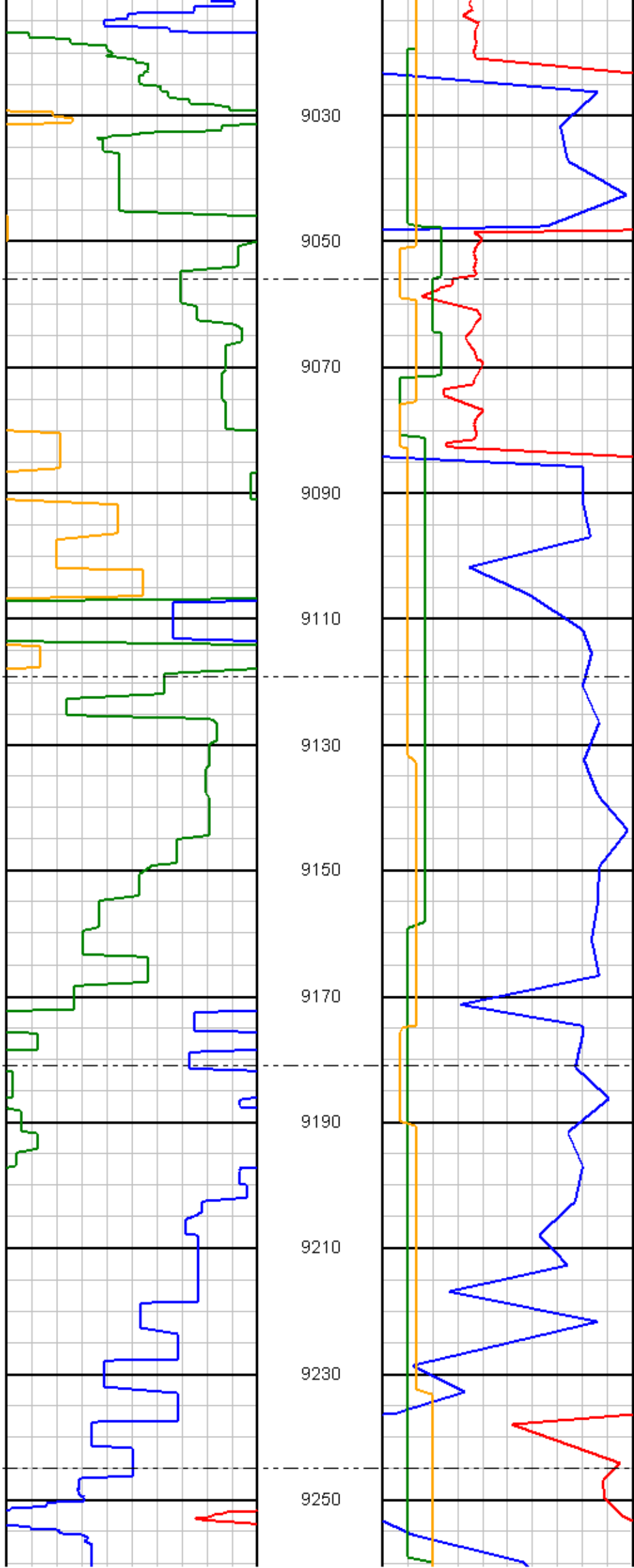
MD: 8489 | INC: 91.9 | AZM: 316.3
TVD: 7459.75

8490

8510







9030

9050

9070

9090

9110

9130

9150

9170

9190

9210

9230

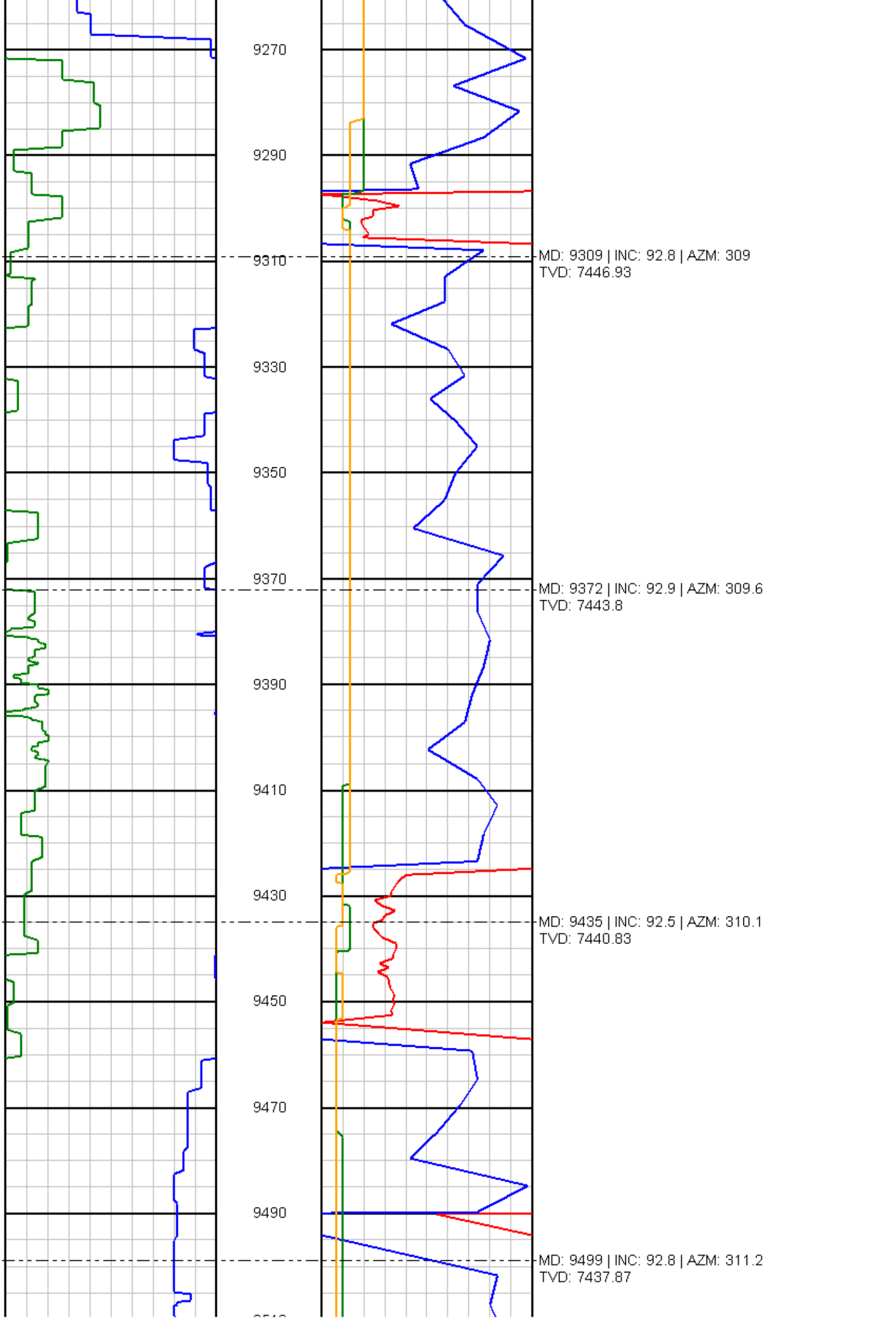
9250

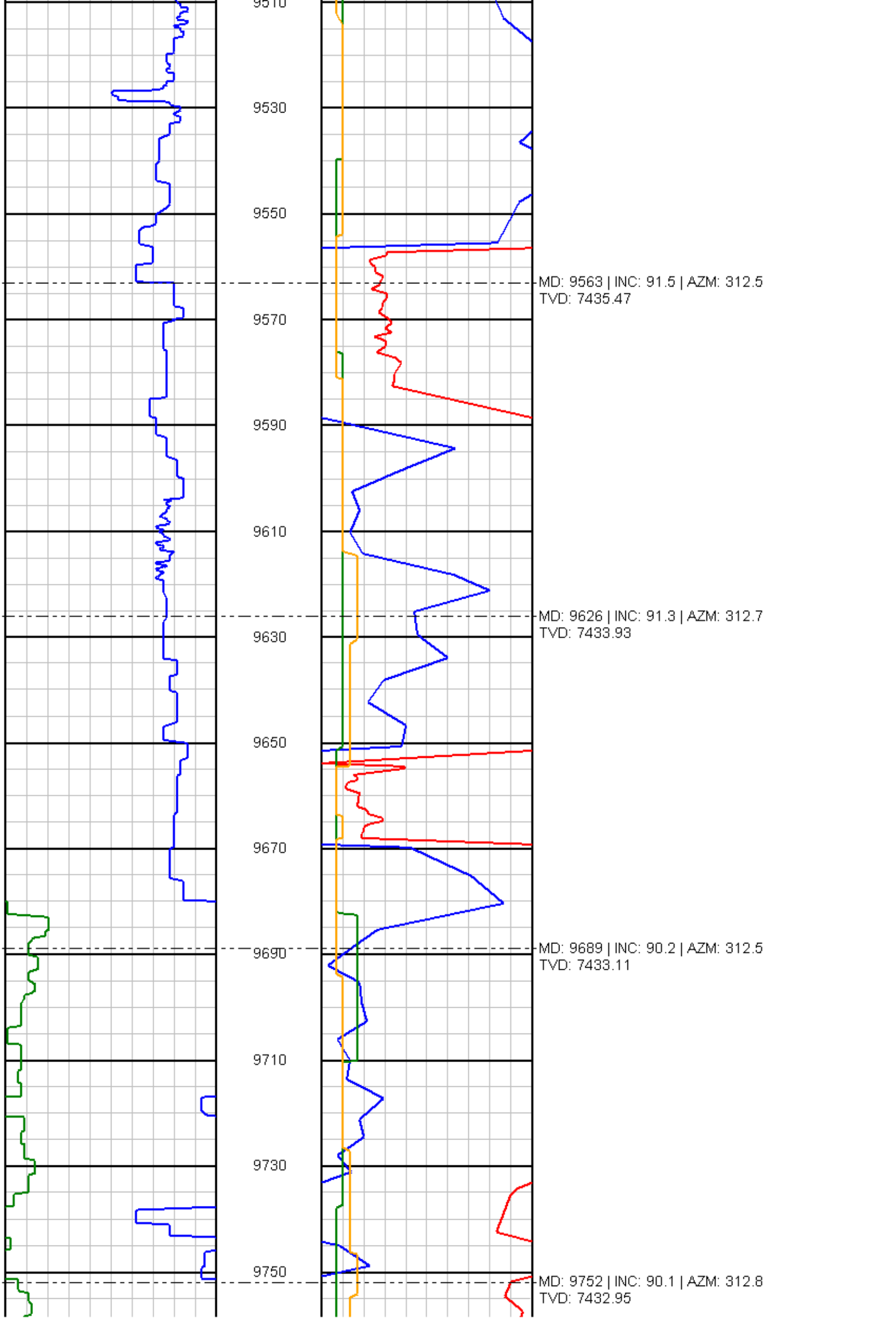
MD: 9056 | INC: 92.6 | AZM: 310.4
TVD: 7459.83

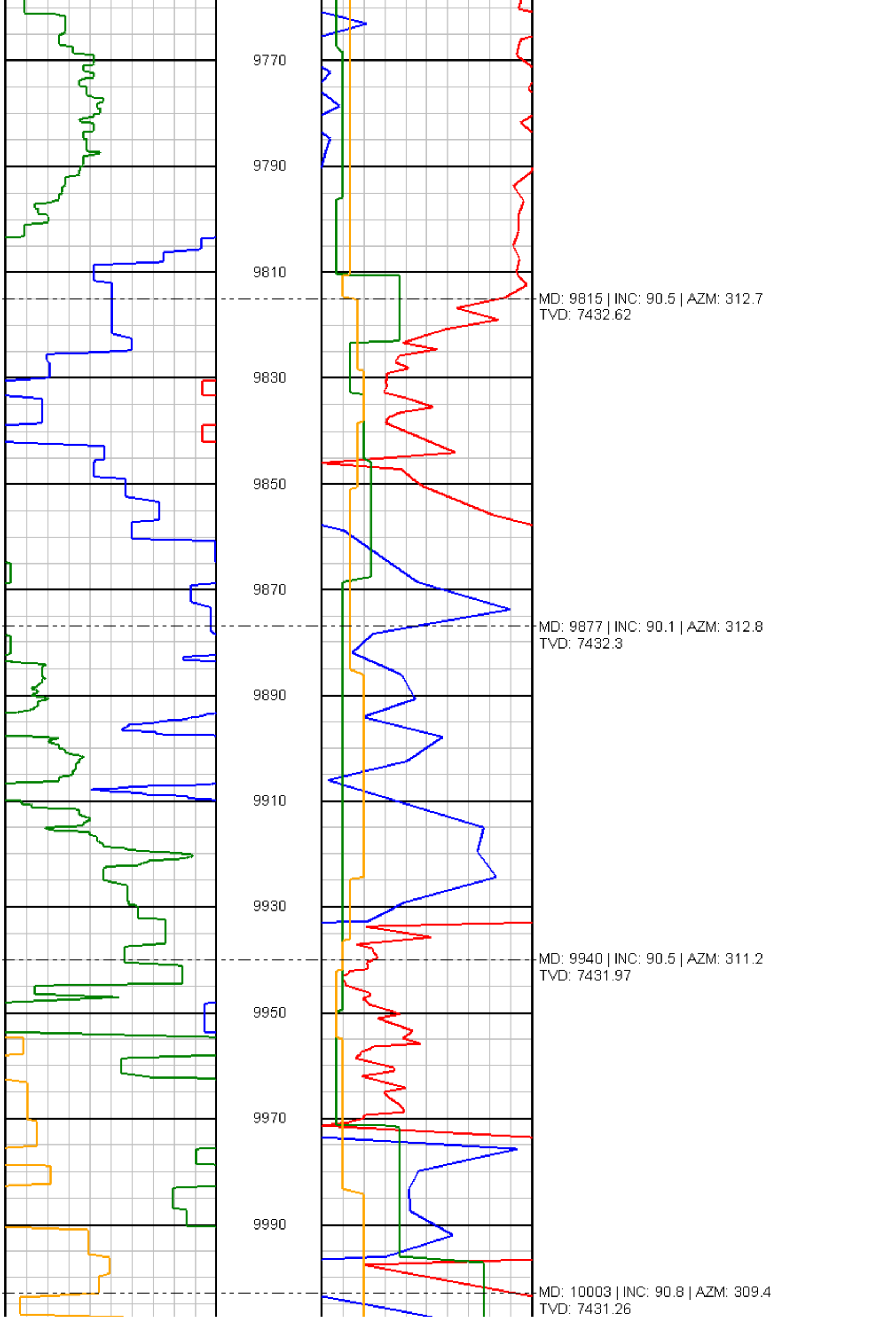
MD: 9119 | INC: 93.4 | AZM: 309.7
TVD: 7456.53

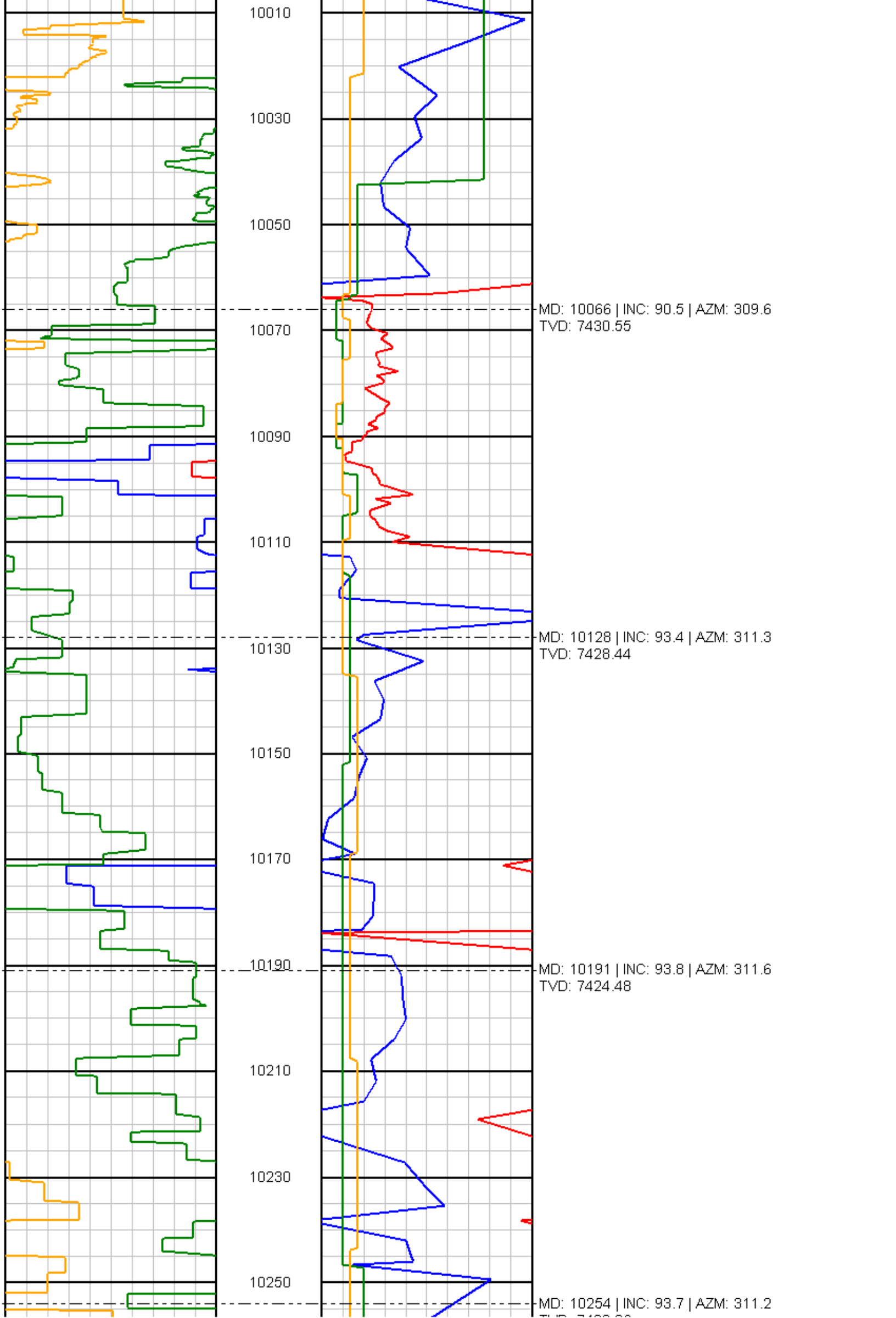
MD: 9181 | INC: 93.3 | AZM: 310.3
TVD: 7452.91

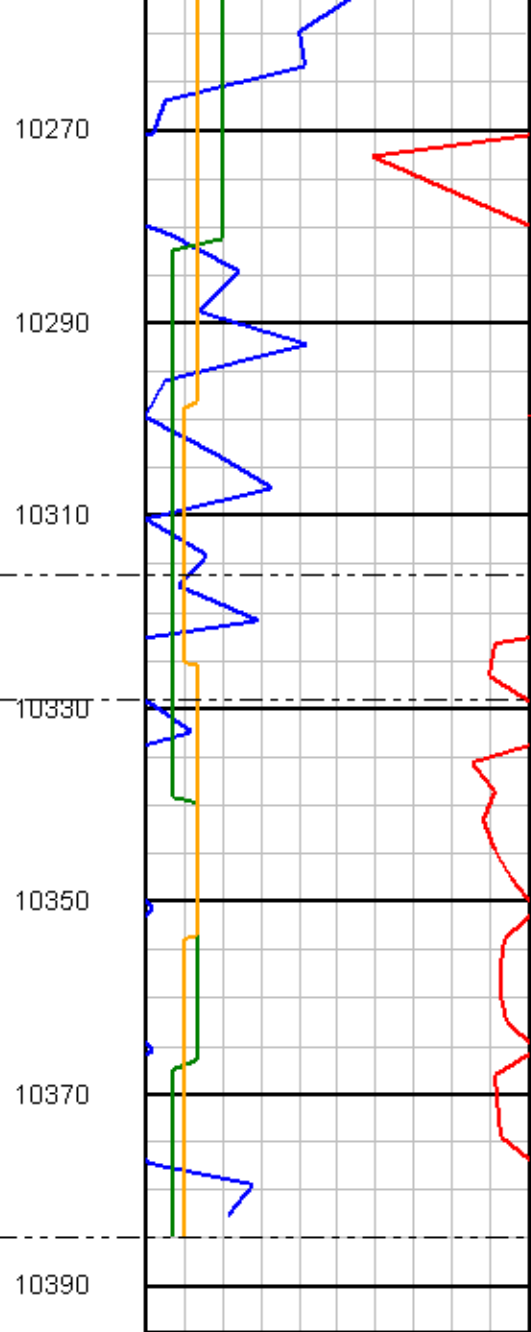
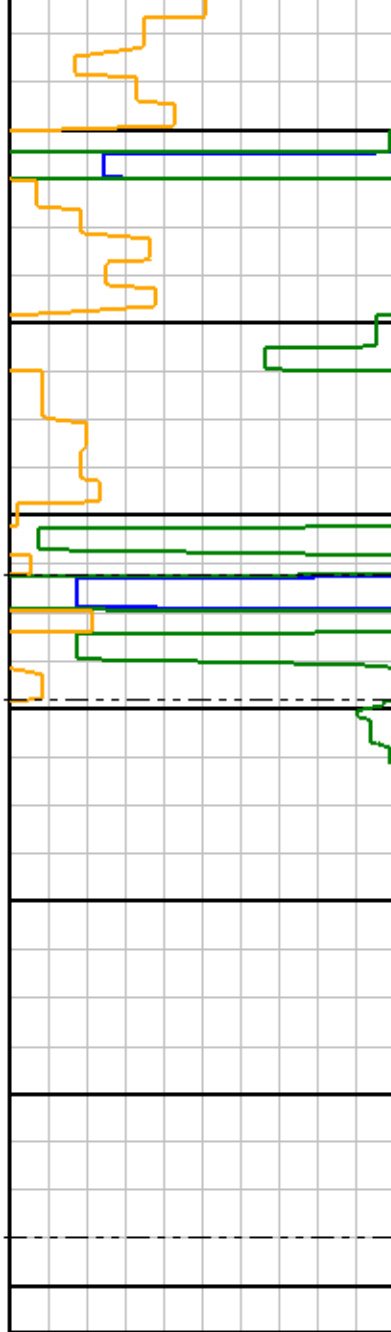
MD: 9245 | INC: 92.3 | AZM: 308
TVD: 7449.78











TVD: 7420.36

10270

10290

10310

10330

10350

10370

10390

MD: 10316 | INC: 93.7 | AZM: 311.5
TVD: 7416.36

MD: 10329 | INC: 93.7 | AZM: 311.4
TVD: 7415.52

MD: 10385 | INC: 93.7 | AZM: 311.4
TVD: 7411.91