



**RADIAL CEMENT BOND LOG
GAMMA RAY / CCL/VDL**

Company	ANTERO RESOURCES CORPORATION		
Well	SARAHLENE 1H		
Field	TYLER		
County	TYLER		
State	W.V.		
Company	ANTERO RESOURCES CORPORATION	Location:	API #: 47-095-02518-0000
Well	SARAHLENE 1H		Other Services
Field	TYLER	AF# A06369	
County	TYLER	SEC TWP RGE	
State	W.V.		
Permanent Datum	G.L.	Elevation	827'
Log Measured From	K.B. OF 30'		
Drilling Measured From	K.B.		

Date	5/4/19		
Run Number	ONE		
Depth Driller	15614'		
Depth Logger	6806'		
Bottom Logged Interval	6806'		
Top Log Interval	SURFACE		
Open Hole Size	8.5"		
Type Fluid	WATER		
Density / Viscosity	N/A		
Max. Recorded Temp.	140 DEG		
Estimated Cement Top	2304'		
Time Well Ready	N/A		
Time Logger on Bottom	N/A		
Equipment Number	624874		
Location	BRIDGEPORT W.V.		
Recorded By	P DAVIDSON		
Witnessed By	J.BURKS		

Borehole Record				Casing Record			
Run Number	Bit	From	To	Size	Weight	From	To
				5.5"	23	15614'	SURFACE
				9.625"		2622'	SURFACE
				13.375"		826'	SURFACE

<<< Fold Here >>>

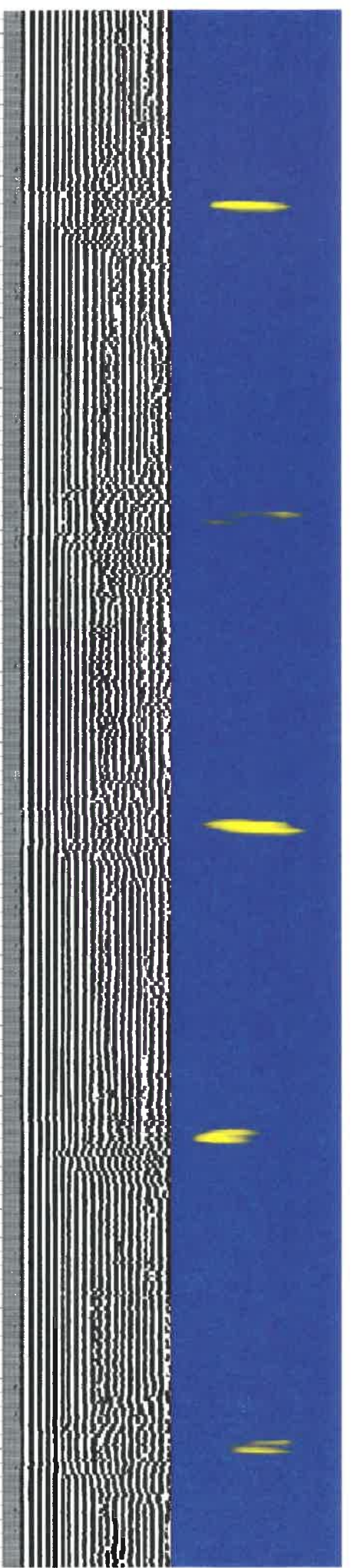
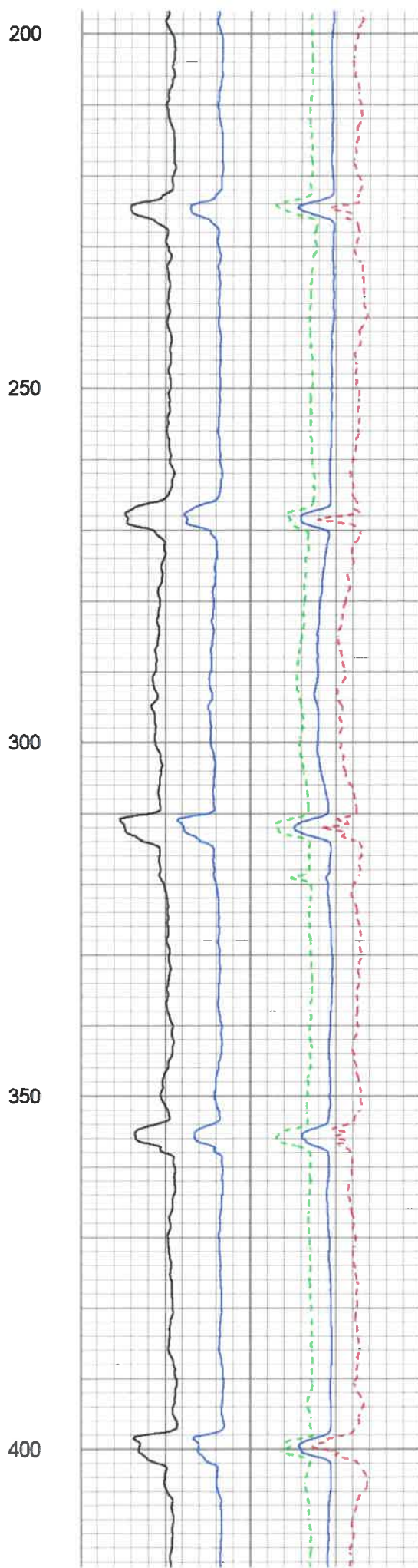
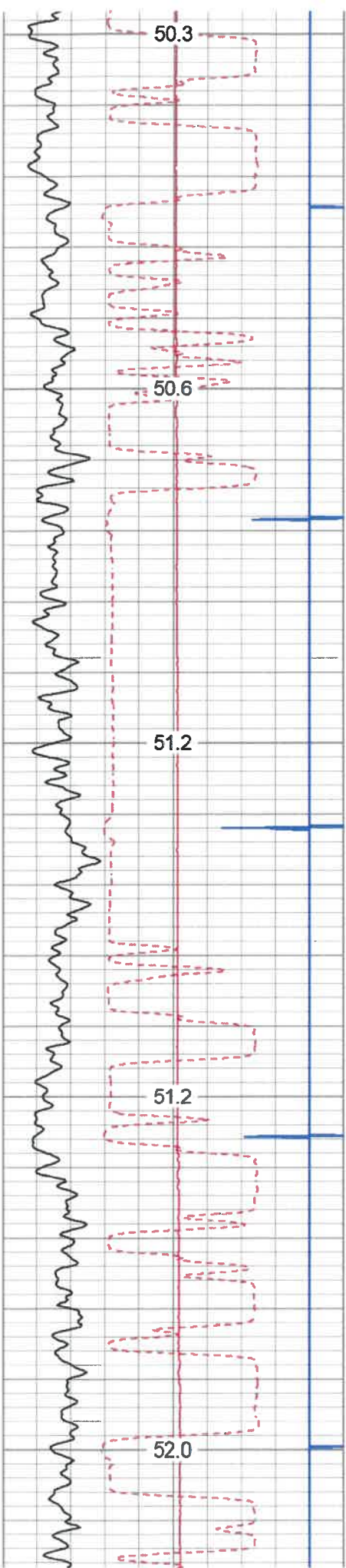
All interpretations are opinions based on inferences from electrical or other measurements and we cannot and do not guarantee the accuracy or correctness of any interpretation, and we shall not, except in the case of gross or willful negligence on our part, be liable or responsible for any loss, costs, damages, or expenses incurred or sustained by anyone resulting from any interpretation made by any of our officers, agents or employees. These interpretations are also subject to our general terms and conditions set out in our current Price Schedule.

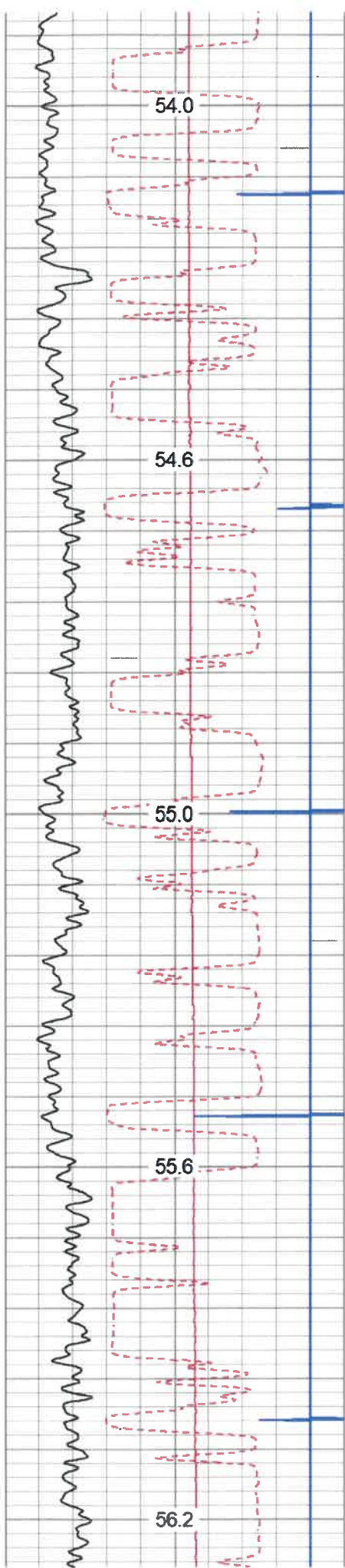
Comments

THANK YOU FOR USING KLX ENERGY SERVICES
 LOG WAS RAN ON 5.5 CASING WITH 1500PSI ON WELL
 ZERO AT K.B. OF 30 FT
 MARKER JOINT @ 5619' TO 5629'
 LOG WAS SHIFTED DOWN 10'

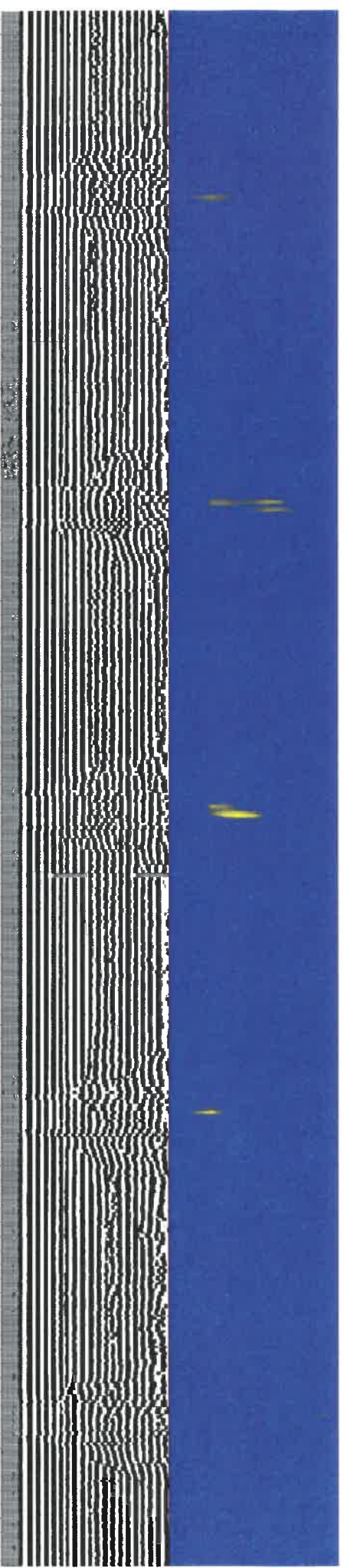
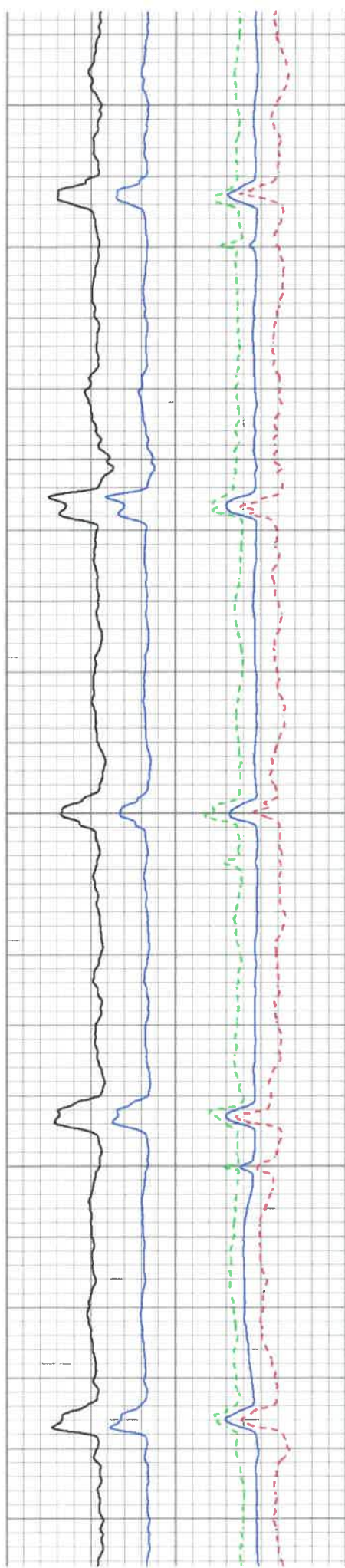


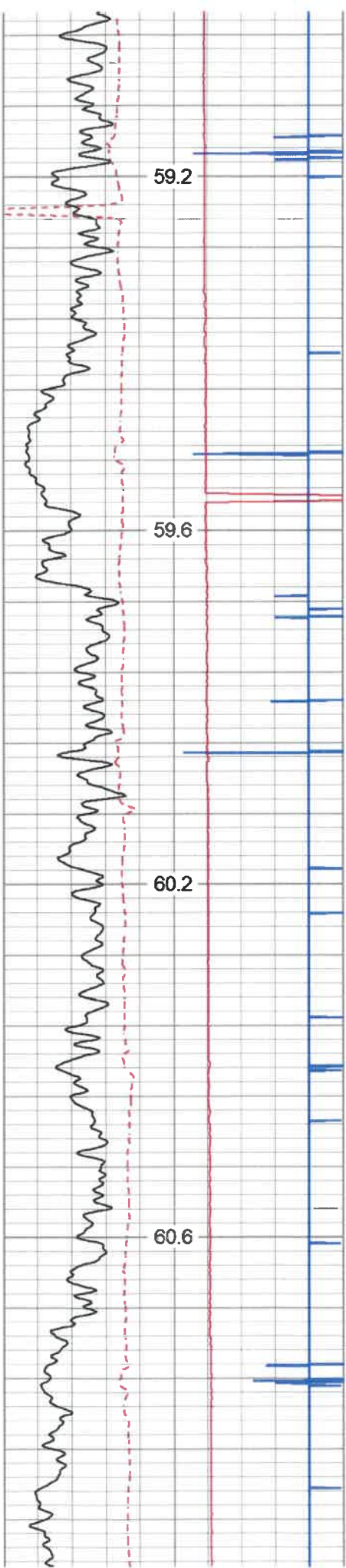
MAIN PASS





650
700
750
800
850



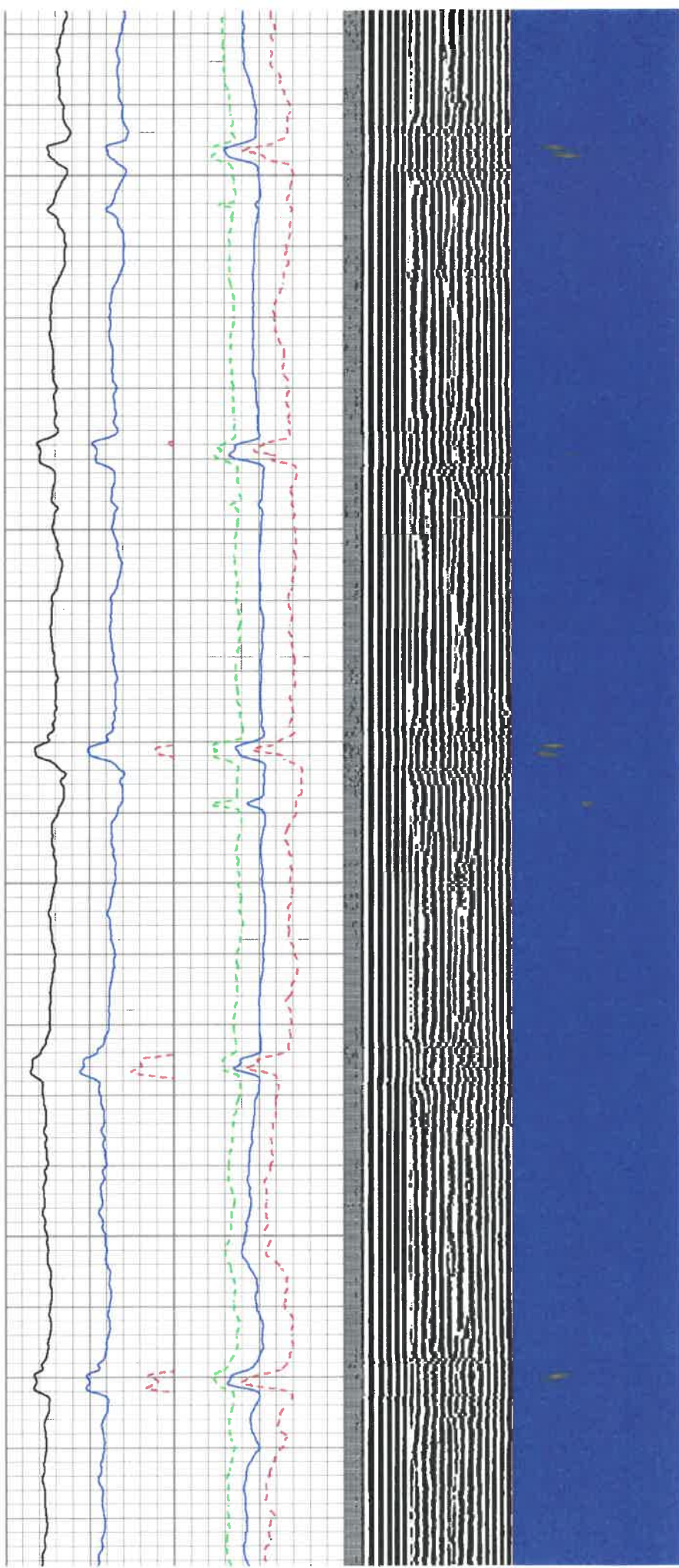


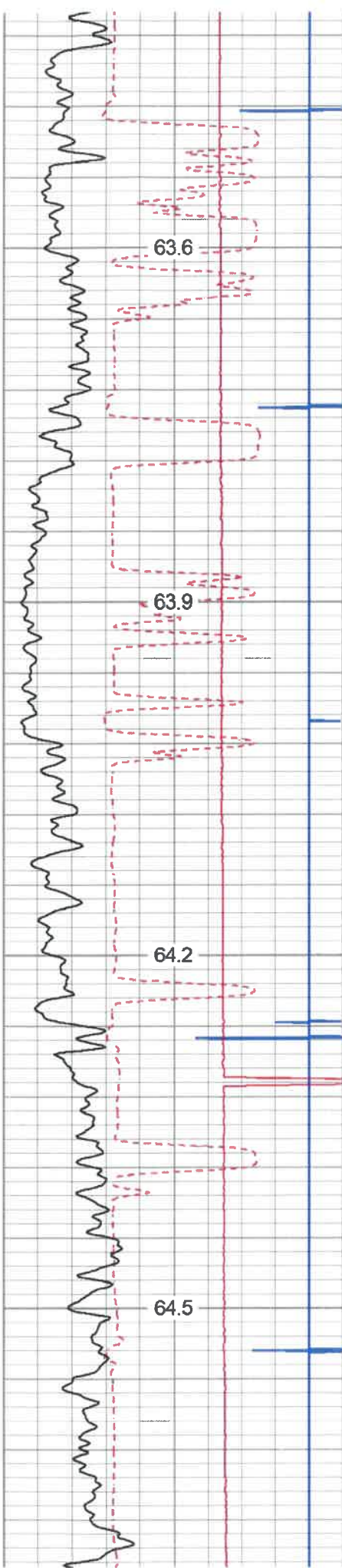
1100

1150

1200

1250



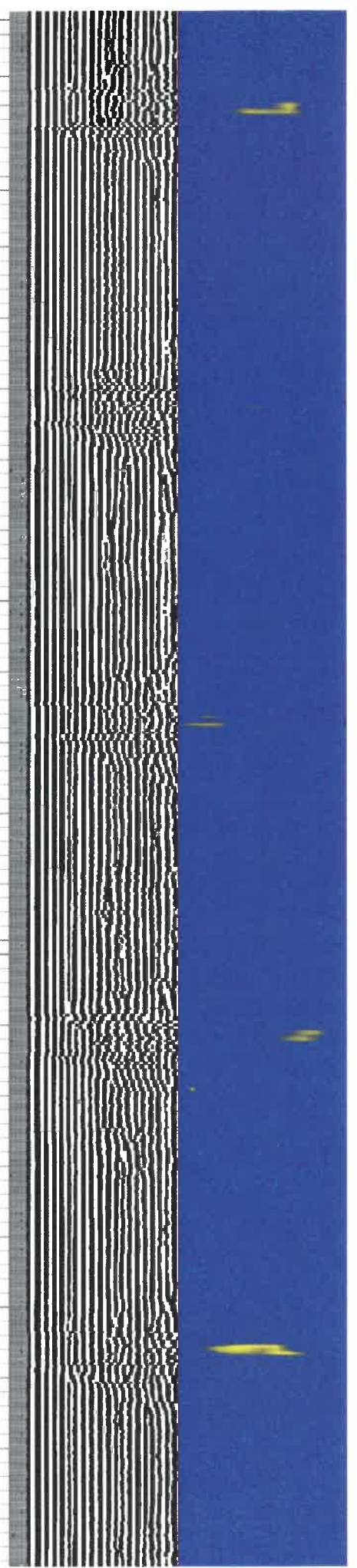
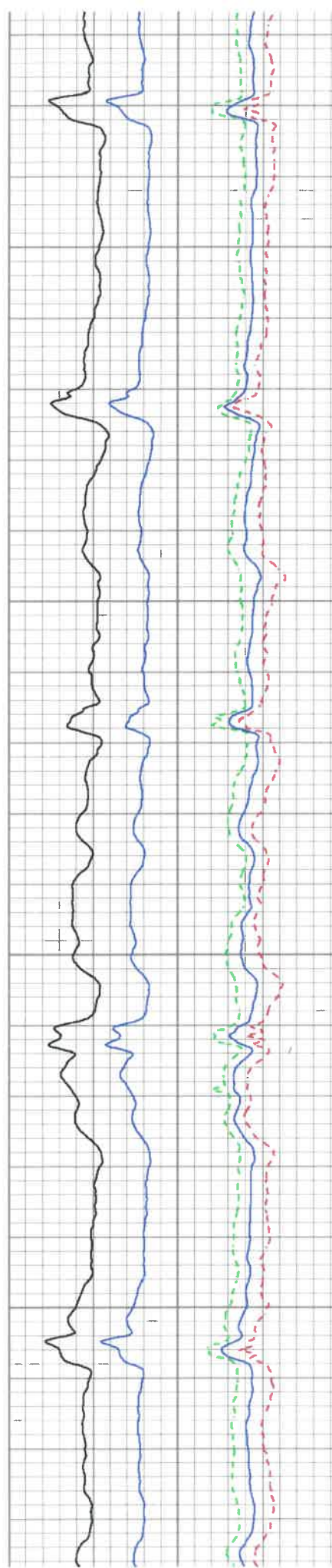


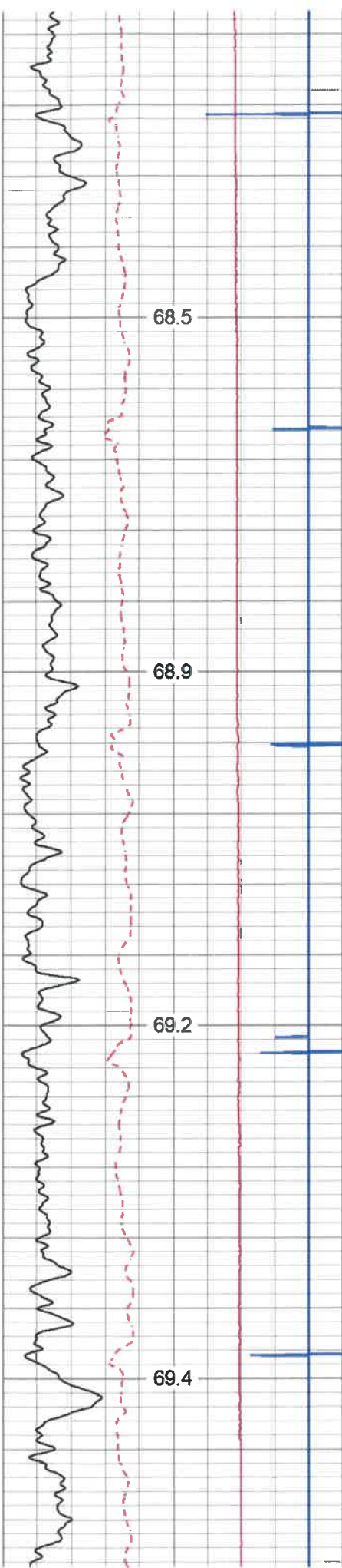
1550

1600

1650

1700



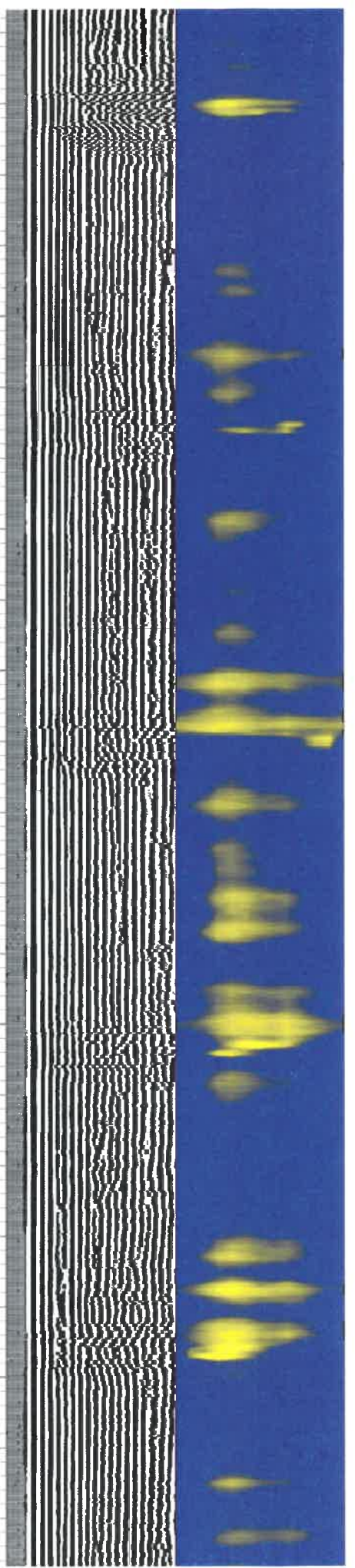
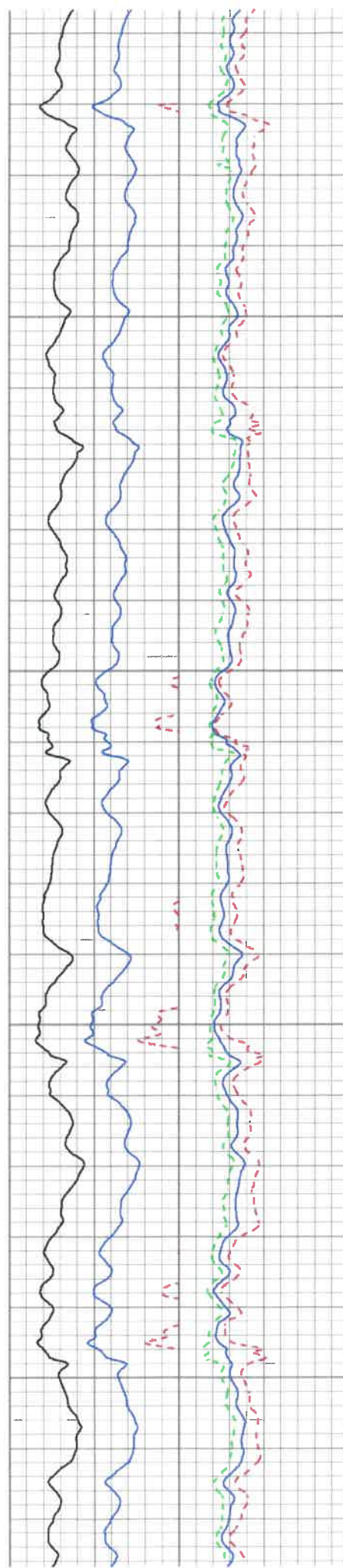


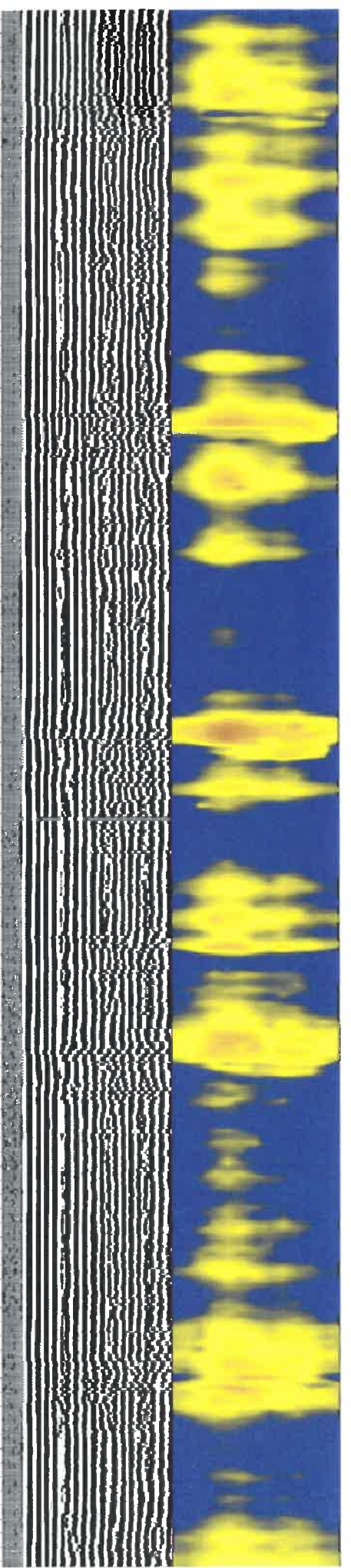
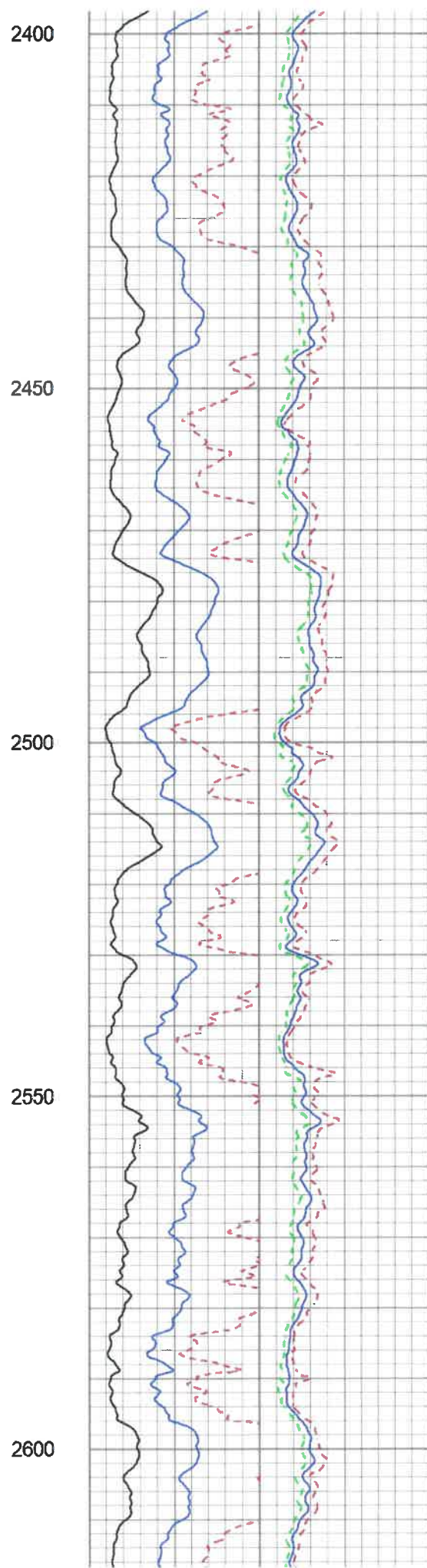
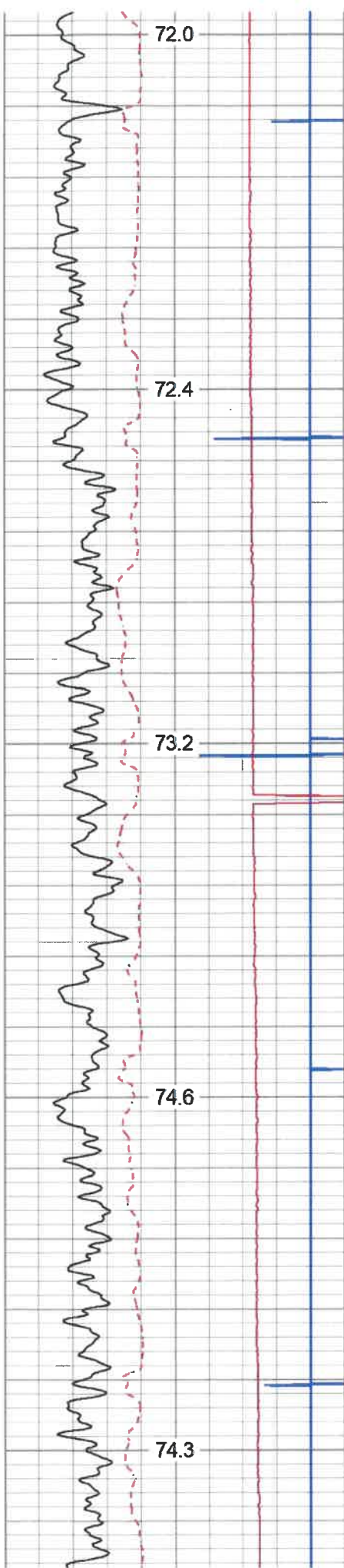
2000

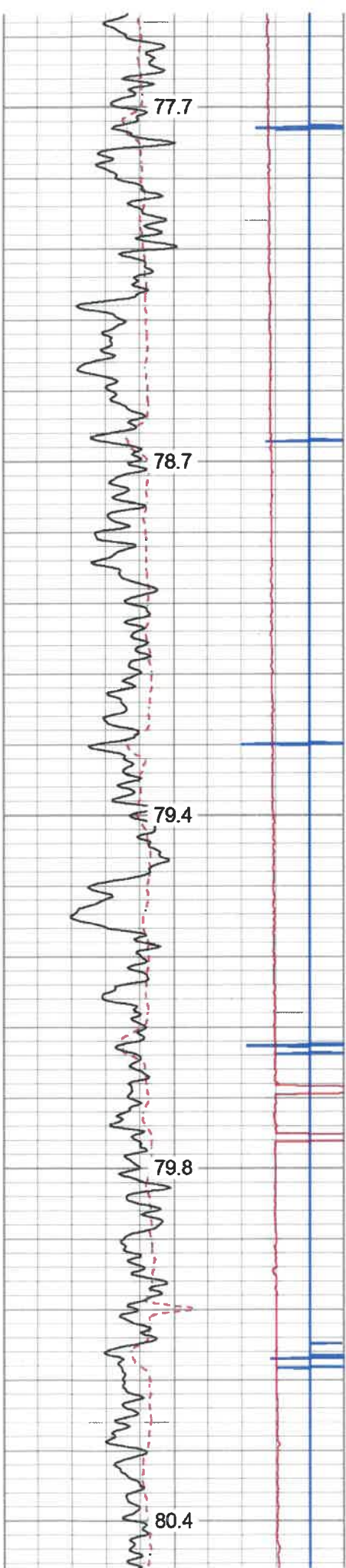
2050

2100

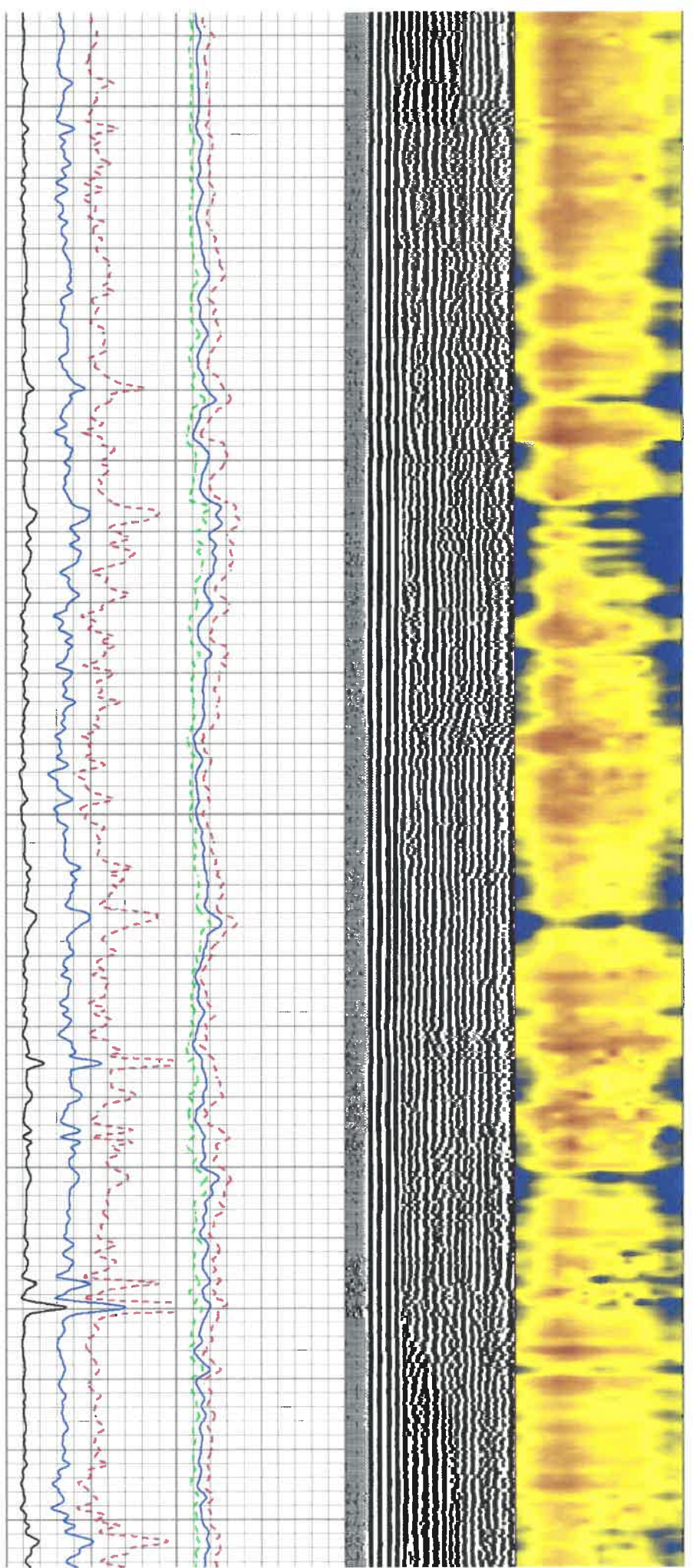
2150

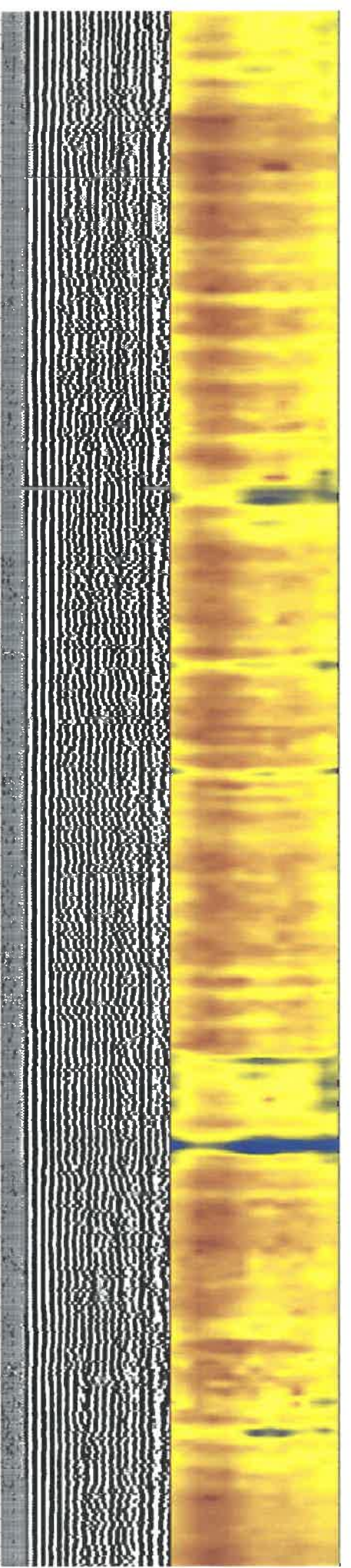
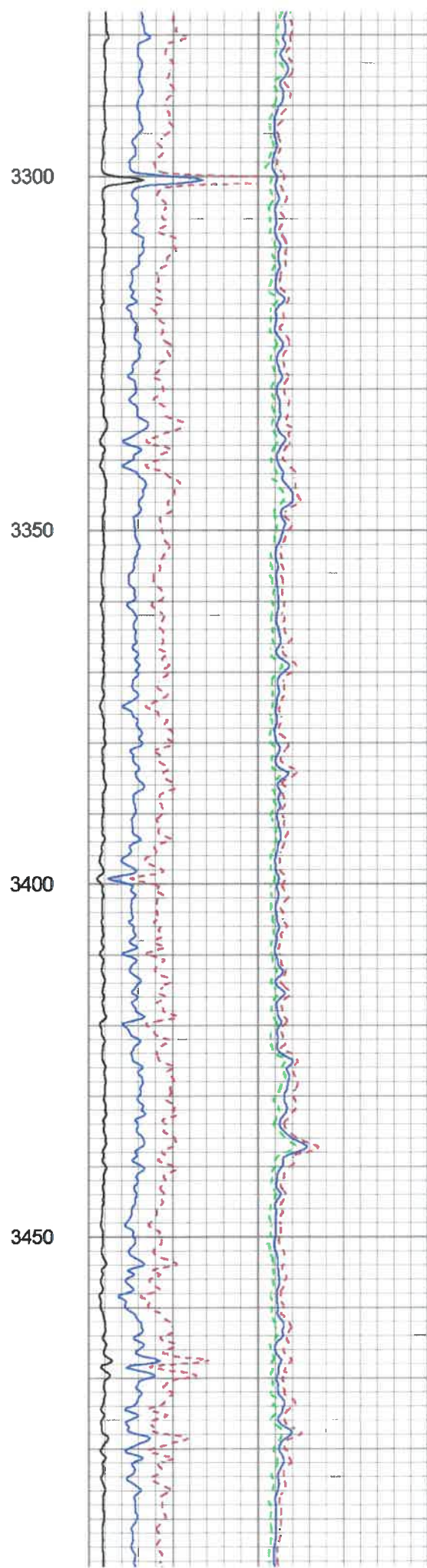
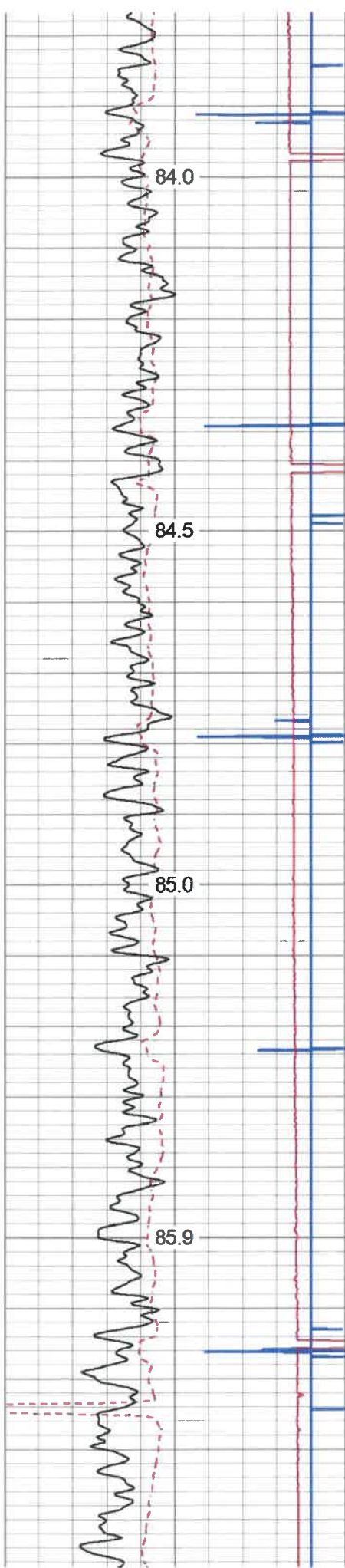


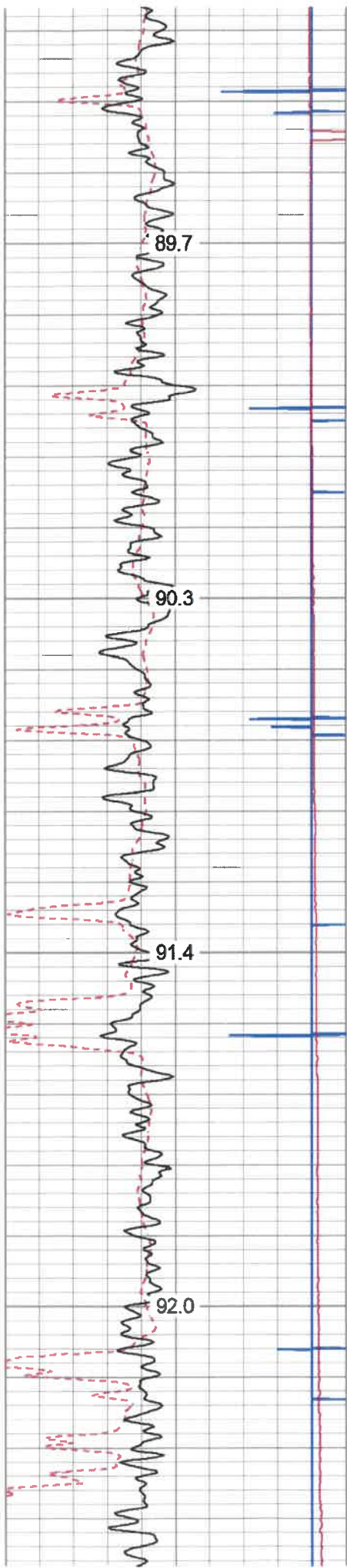




2850
2900
2950
3000
3050





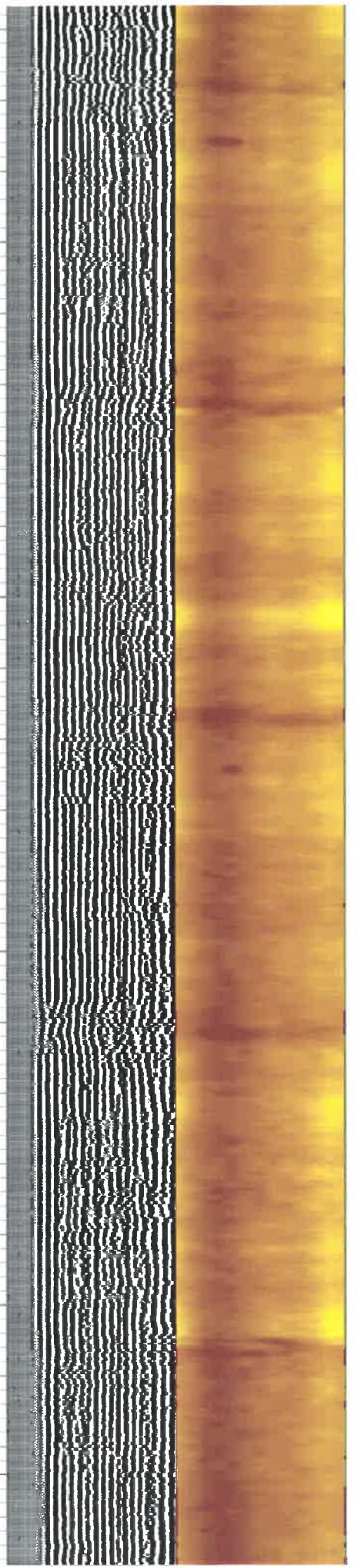
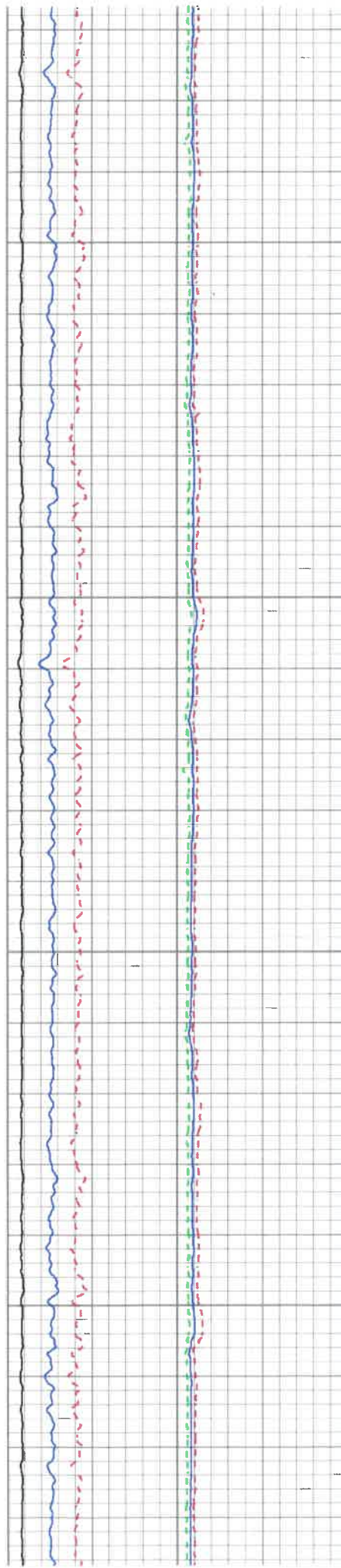


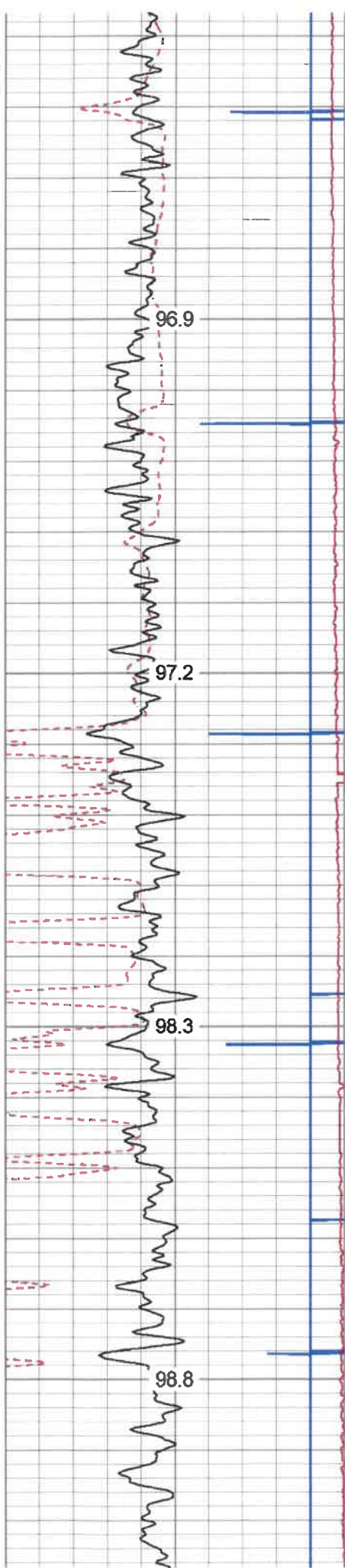
3750

3800

3850

3900



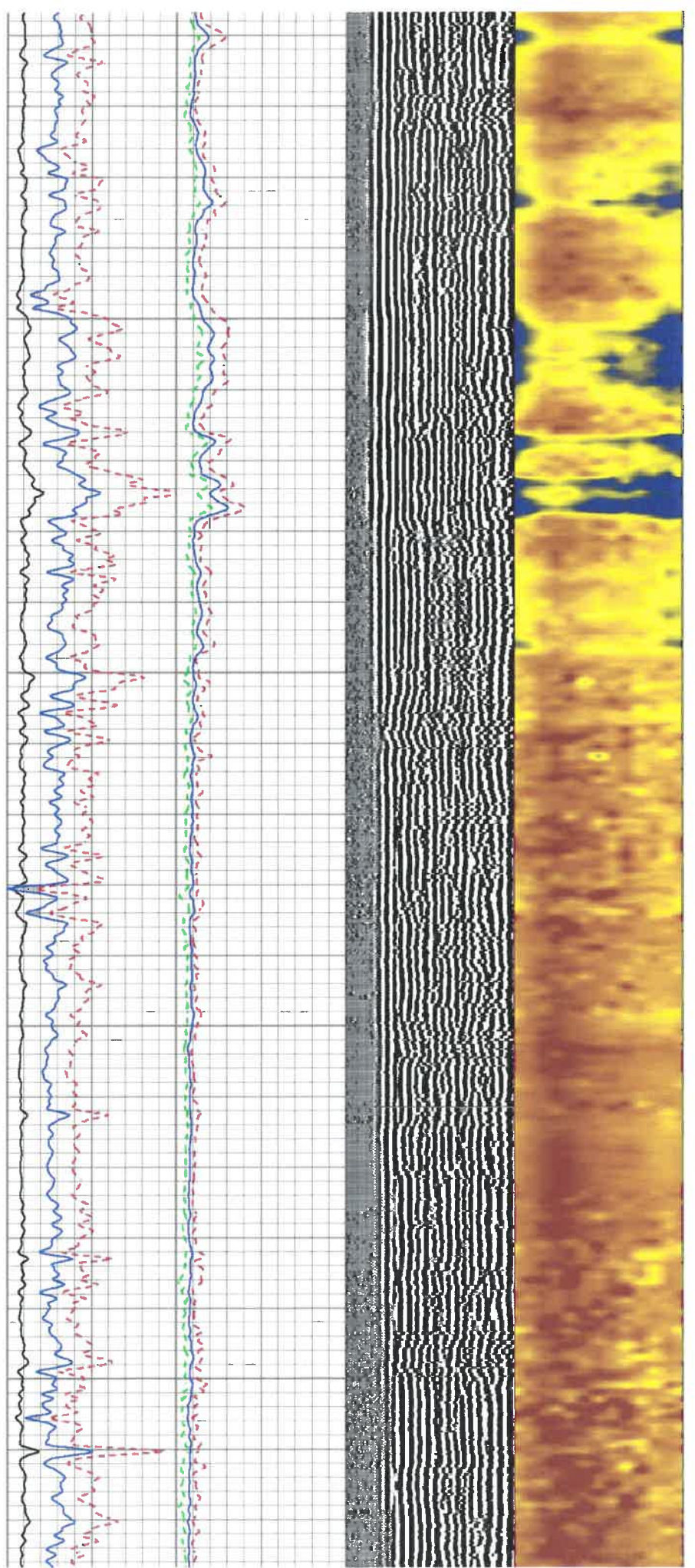


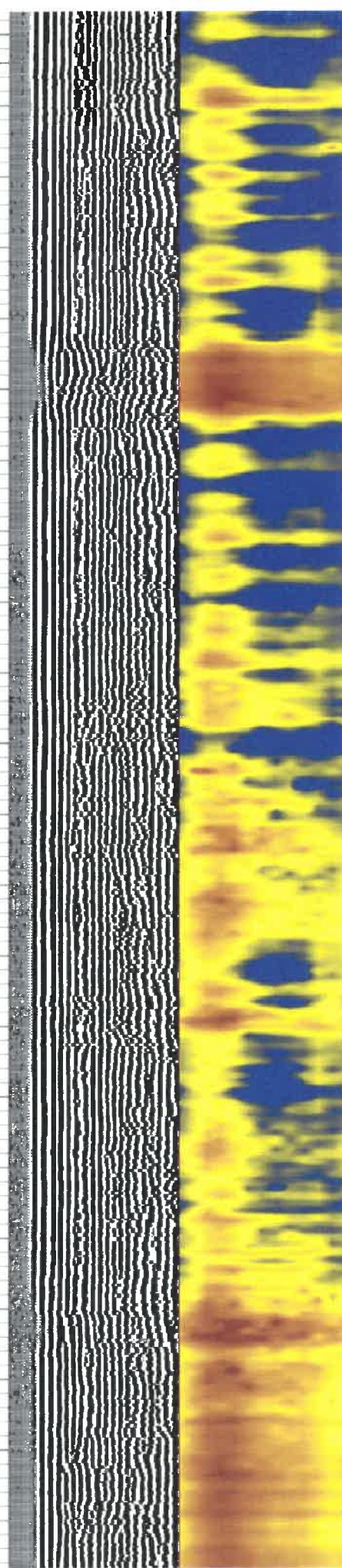
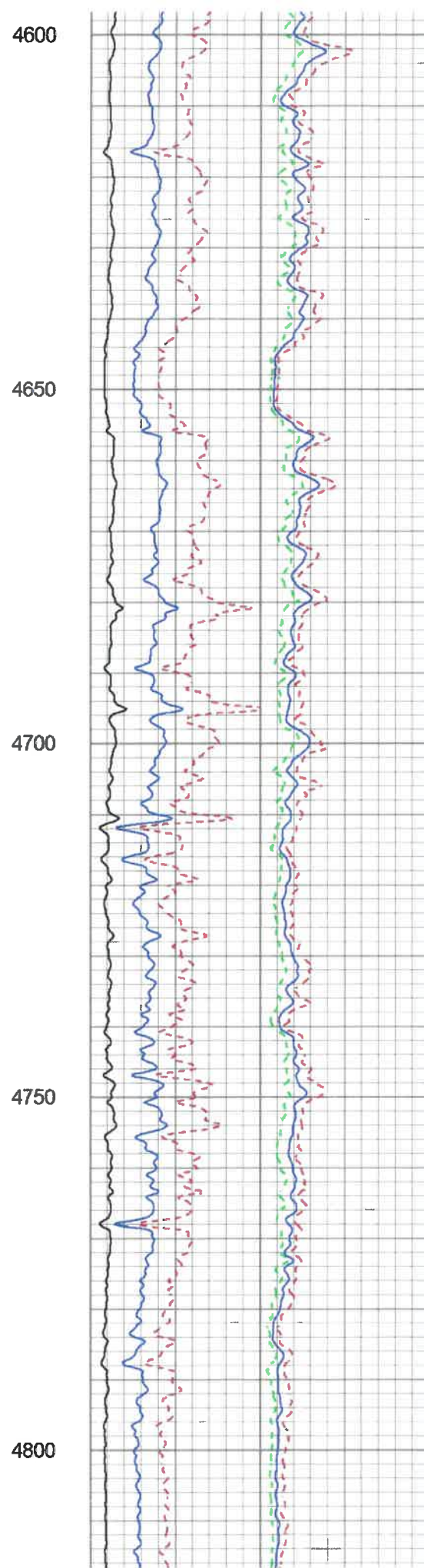
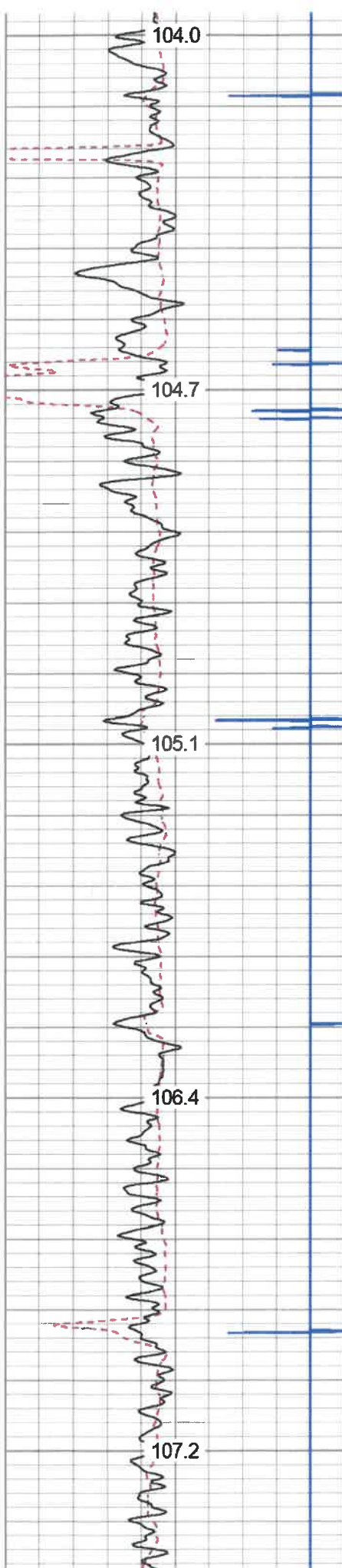
4200

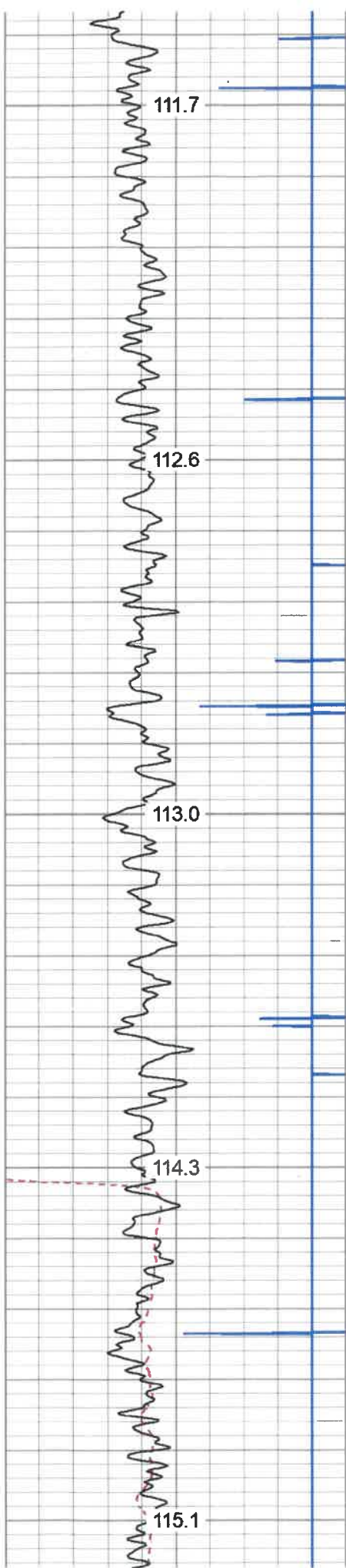
4250

4300

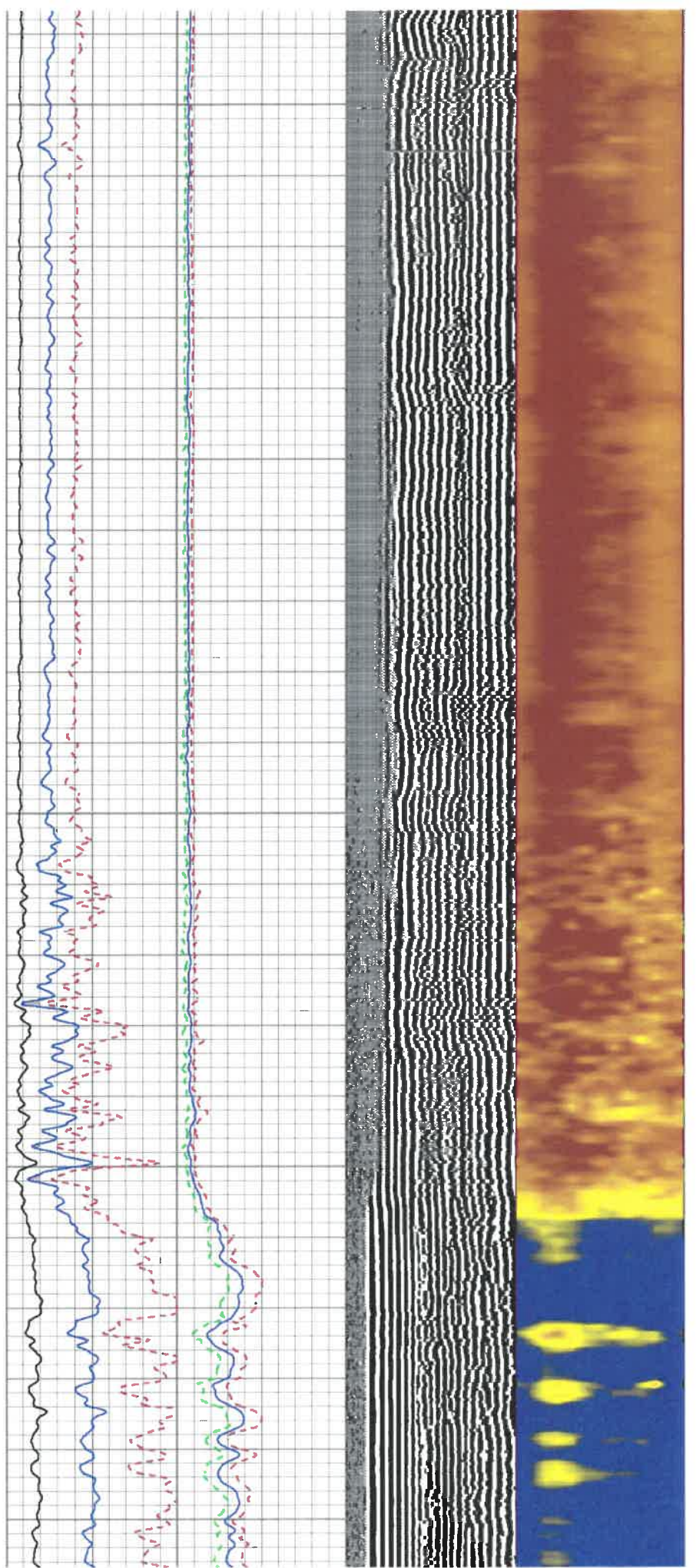
4350

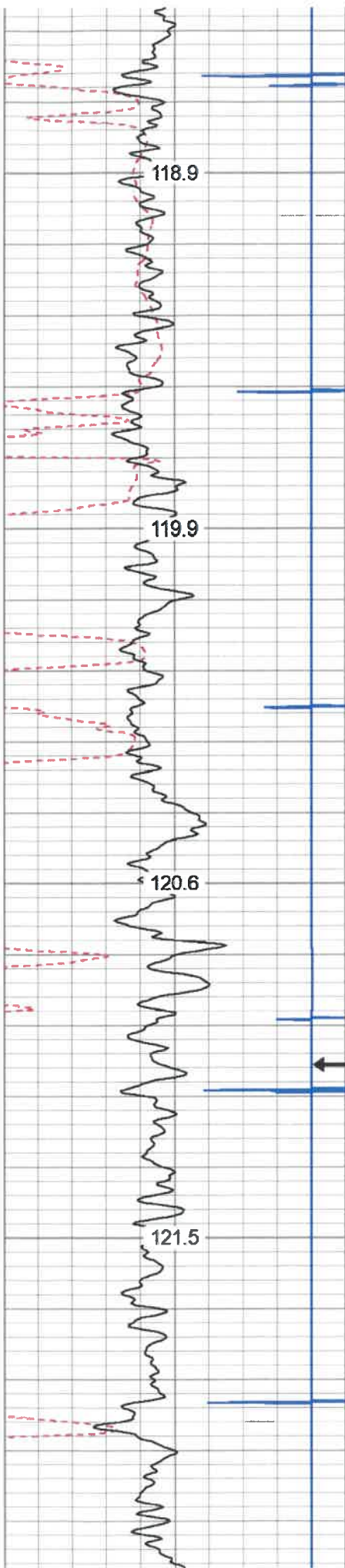






5050
5100
5150
5200
5250



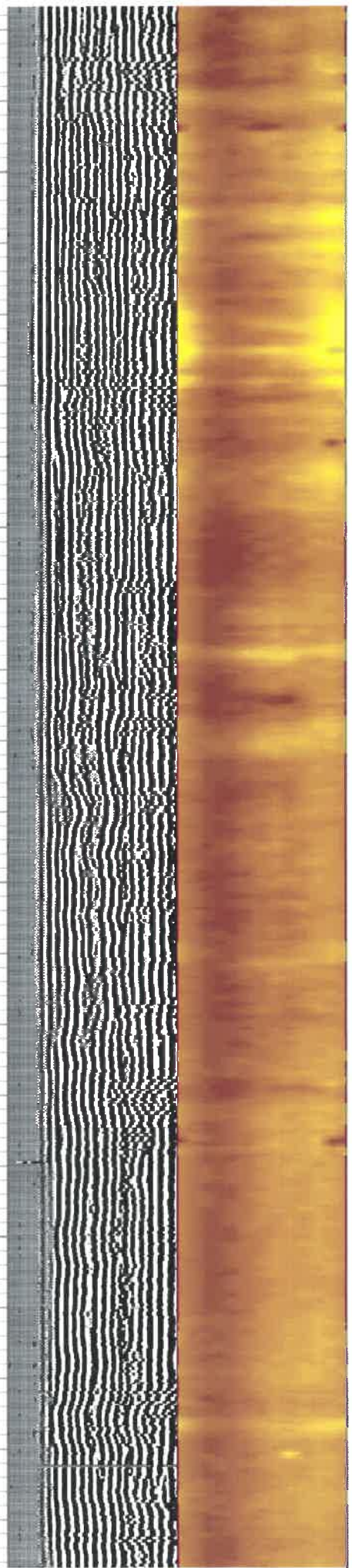
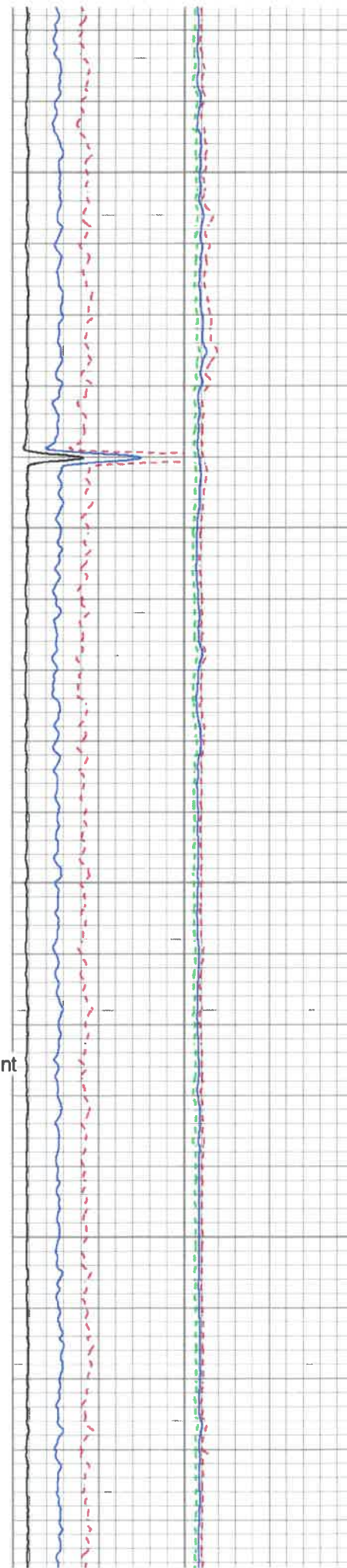


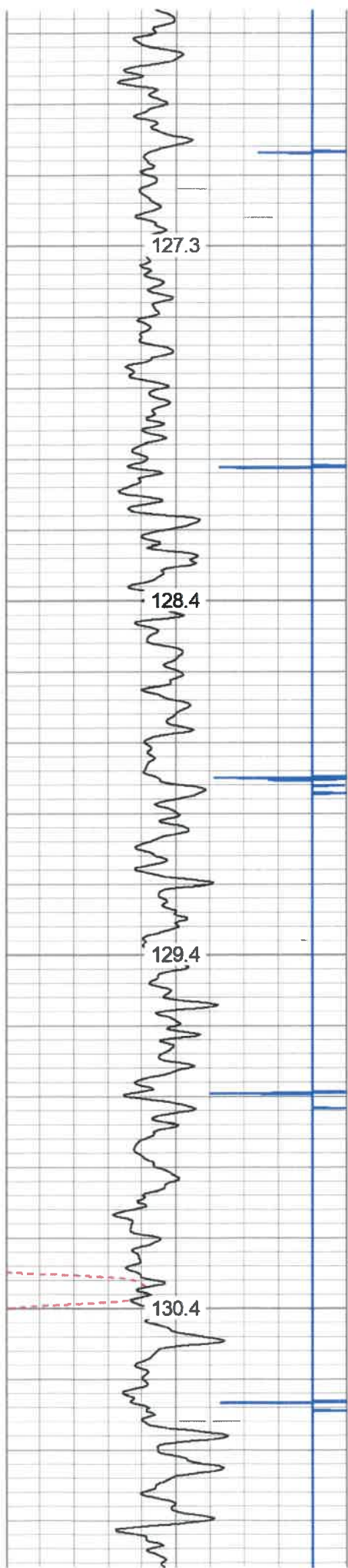
5500

5550

5600

5650



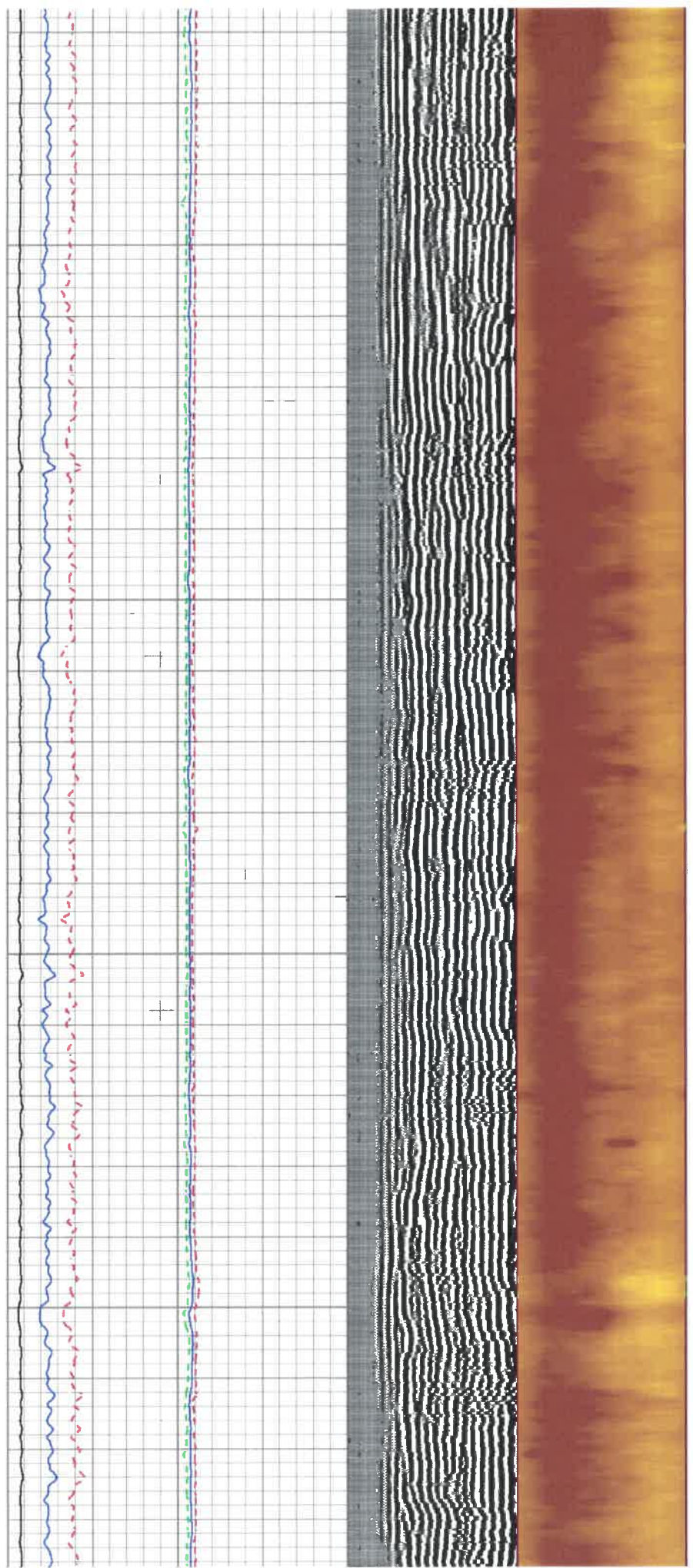


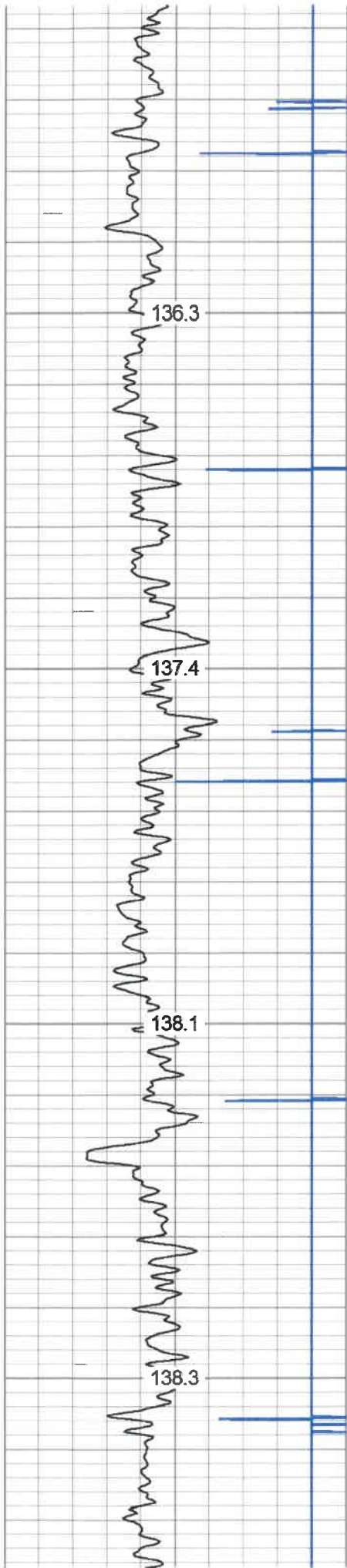
5950

6000

6050

6100



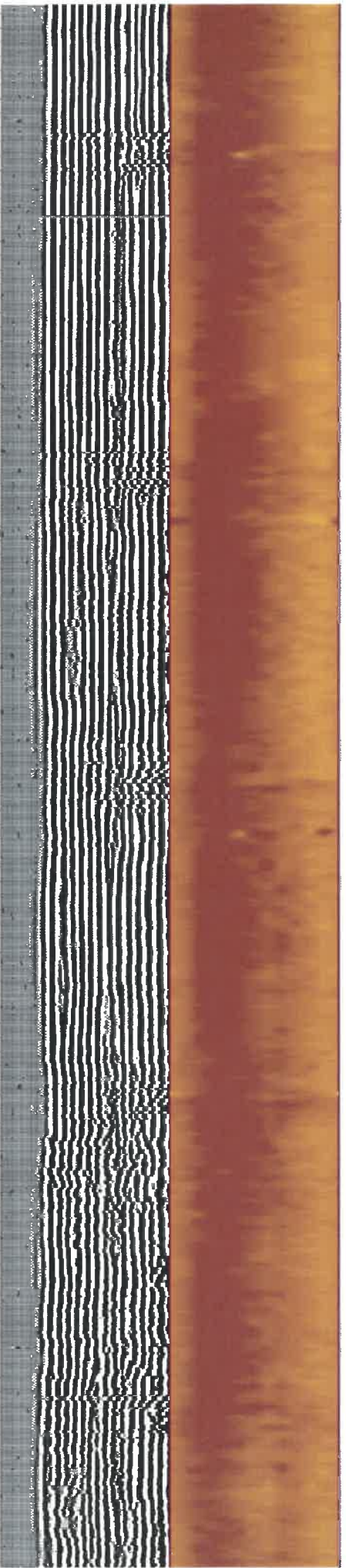
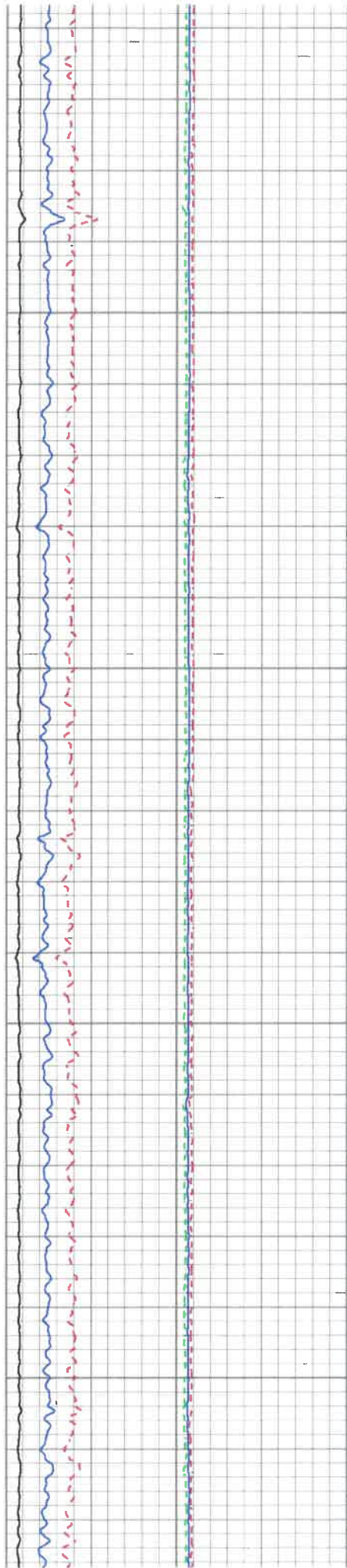


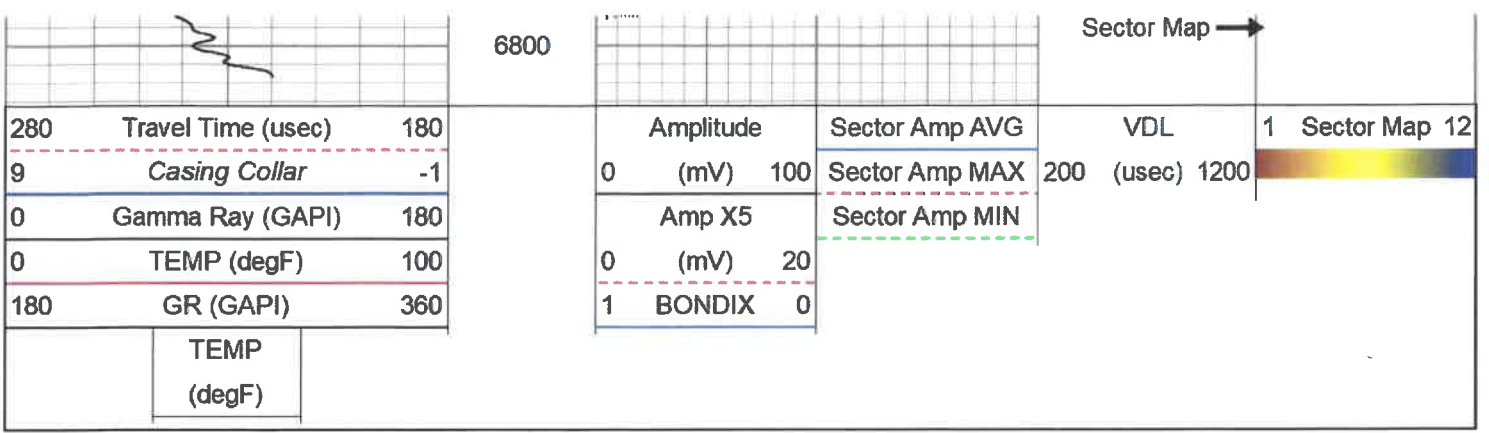
6400

6450

6500

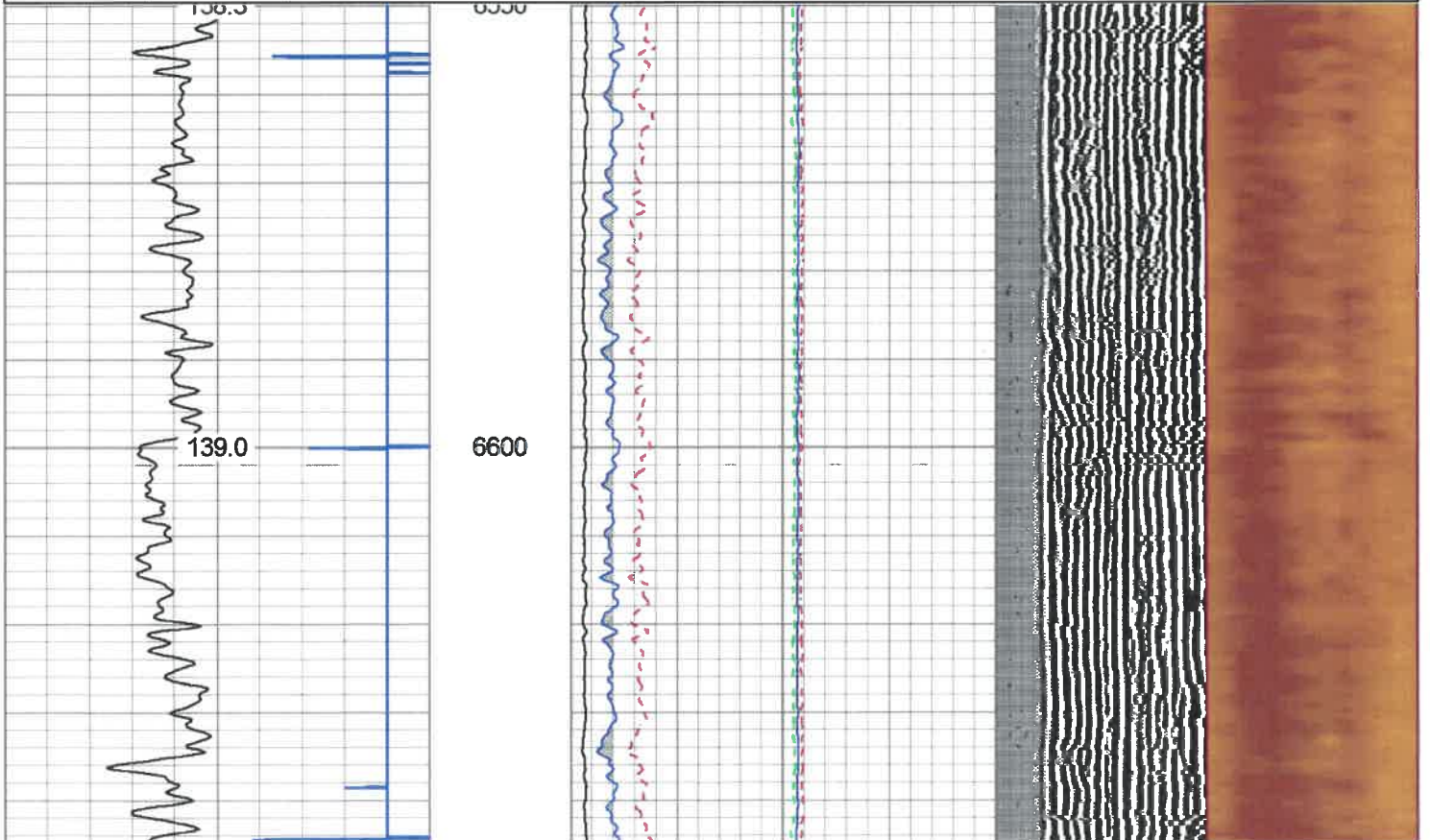
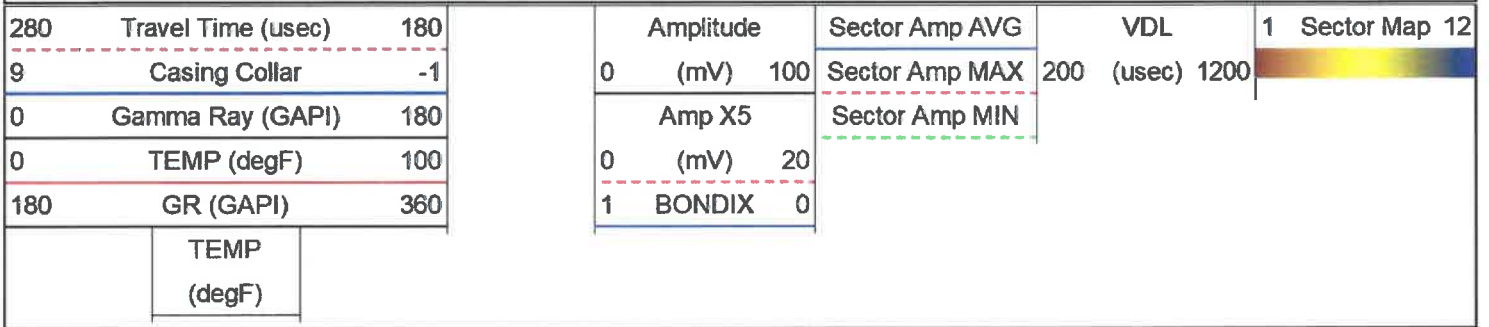
6550





REPEAT PASS

Database File sarahline1h.db
 Dataset Pathname REPEAT
 Presentation Format antero
 Dataset Creation Wed May 08 11:19:15 2019
 Charted by Depth in Feet scaled 1:240



Calibration Report

Database File sarahline1h.db
 Dataset Pathname pass3.1
 Dataset Creation Mon May 13 16:17:28 2019

Gamma Ray Calibration Report

Serial Number: 0111
 Tool Model: Tek-Co 2 3/4
 Performed: Thu May 02 12:24:19 2019

Calibrator Value: 1.0 GAPI

Background Reading: 0.0 cps
 Calibrator Reading: 1.0 cps

Sensitivity: 0.5000 GAPI/cps

Segmented Cement Bond Log Calibration Report

Serial Number: T12_01
 Tool Model: Tek12

Calibration Casing Diameter: 5.500 in
 Calibration Depth: 12.517 ft

Master Calibration, performed Wed May 08 08:53:16 2019:

	Raw (v)		Calibrated (mv)		Results	
	Zero	Cal	Zero	Cal	Gain	Offset
3'	-0.002	1.120	3.500	71.921	60.959	4.646
CAL	0.555	1.097				
5'	0.011	0.964	3.500	71.921	71.836	2.675
SUM						
S1	0.009	1.642	0.000	100.000	61.220	-0.521
S2	0.008	1.744	0.000	100.000	57.615	-0.463
S3	0.008	1.877	0.000	100.000	53.505	-0.437
S4	0.008	1.844	0.000	100.000	54.470	-0.448
S5	0.008	1.737	0.000	100.000	57.842	-0.468
S6	0.008	1.524	0.000	100.000	65.965	-0.541
S7	0.009	1.354	0.000	100.000	74.323	-0.639
S8	0.009	1.214	0.000	100.000	82.992	-0.728
S9	0.008	1.155	0.000	100.000	87.218	-0.734
S10	0.009	1.238	0.000	100.000	81.346	-0.734
S11	0.009	1.313	0.000	100.000	76.672	-0.705
S12	0.008	1.500	0.000	100.000	67.052	-0.552

Temperature Calibration Report

Serial Number: T12_01
 Tool Model: Tek12
 Performed: Fri Oct 22 17:21:06 2010

	Reference	Reading
Low Reference:	0.00 degF	0.00 usec
High Reference:	1.00 degF	1.00 usec
Gain:	0.33	
Offset:	0.00	
Delta Spacing	2	

WVF5FT	10.00		Tek-2.75 2 3/4" Tekco Adjustable Centralizer	2.73	2.75	25.00
WVFTEMP	6.67		GR-Tek-Co 2 3/4 (0111) Tekco 2 3/4" 400 Deg. F Logging Gamma Ray	3.67	2.75	40.00
GR	1.31		Titan-1.4375_Cap Titan 1 7/16" Cap	0.27	1.44	1.00

Dataset: sarahline1h.db: field/well/run1/pass3.1
 Total length: 21.37 ft
 Total weight: 256.00 lb
 O.D.: 3.25 in



Company ANTERO RESOURCES CORPORATION
 Well SARAHLENE 1H
 Field TYLER
 County TYLER
 State W.V. Country