



**RADIAL CEMENT BOND LOG
GAMMA RAY / CCL MDL**

Company ANTERO RESOURCES CORPORATION
Well STERLING 2H
Field TYLER
County TYLER
State W.V.

Company ANTERO RESOURCES CORPORATION
Well STERLING 2H
Field TYLER
County TYLER State W.V.

Location: API # : 47-095-02529-0000 Other Services

AFE# A06613

SEC TWP RGE

Permanent Datum	G.L.	Elevation	827'	Elevation K.B. 1084' D.F. 1084' G.L. 1114'
Log Measured From	K.B. OF 30'			
Drilling Measured From	K.B.			

Date 5/4/19

Run Number	ONE
Depth Driller	17147'
Depth Logger	6892'
Bottom Logged Interval	6892'
Top Log Interval	SURFACE
Open Hole Size	8.5"
Type Fluid	WATER
Density / Viscosity	N/A
Max. Recorded Temp.	141.5 DEG
Estimated Cement Top	1625'
Time Well Ready	N/A
Time Logger on Bottom	N/A
Equipment Number	624874
Location	BRIDGEPORT W.V.
Recorded By	P DAVIDSON
Witnessed By	J.BURKS

Borehole Record		Casing Record					
Run Number	Bit	From	To	Size	Weight	From	To
				5.5"	23	17147'	SURFACE
				9.625"		2650'	SURFACE
				13.375"		842"	SURFACE

>>> Fold Here >>>

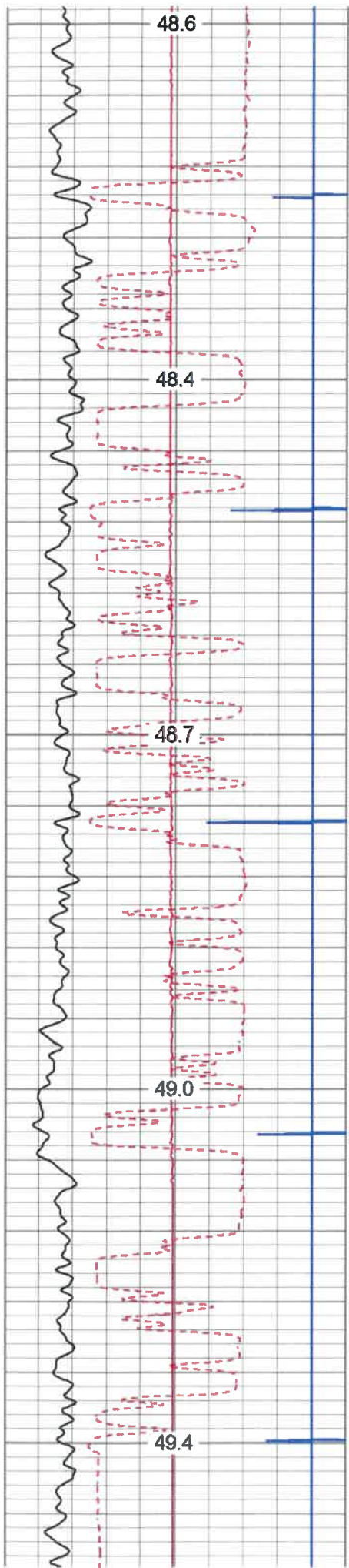
All interpretations are opinions based on inferences from electrical or other measurements and we cannot and do not guarantee the accuracy or correctness of any interpretation, and we shall not, except in the case of gross or willful negligence on our part, be liable or responsible for any loss, costs, damages, or expenses incurred or sustained by anyone resulting from any interpretation made by any of our officers, agents or employees. These interpretations are also subject to our general terms and conditions set out in our current Price Schedule.

Comments

THANK YOU FOR USING KLX ENERGY SERVICES
LOG WAS RAN ON 5.5 CASING WITH 1500PSI ON WELL
ZERO AT K.B. OF 30 FT
MARKER JOINT @5840'-5850'
LOG WAS NOT SHIFTED



MAIN PASS



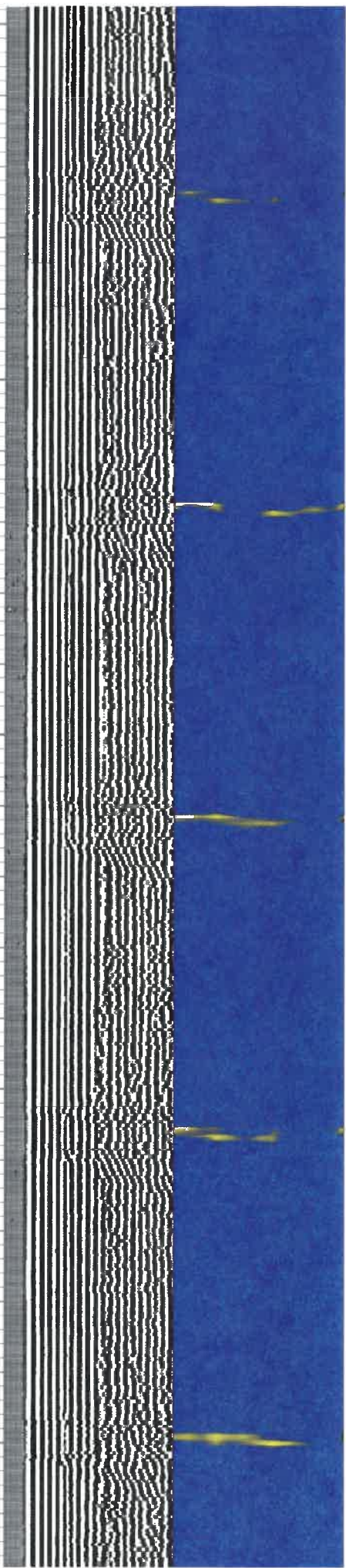
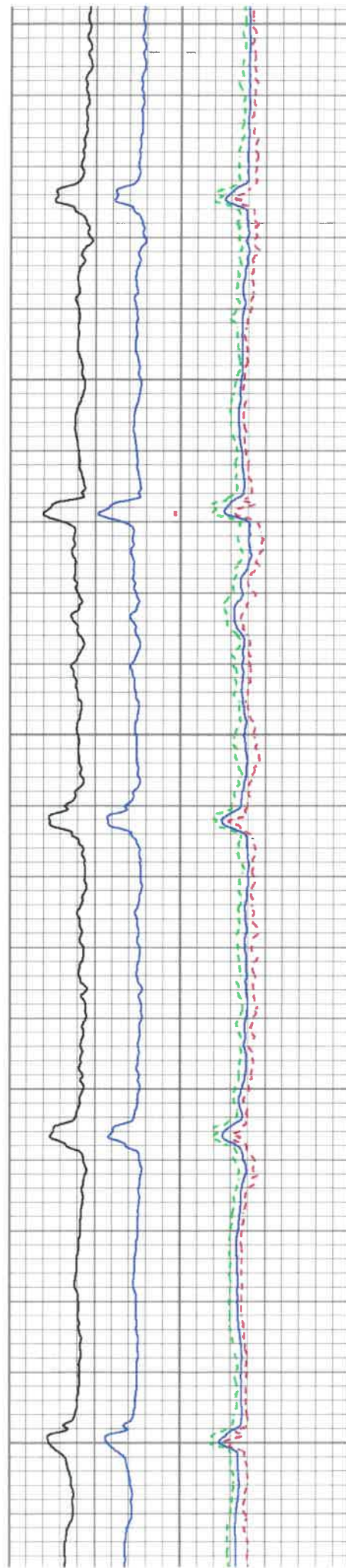
200

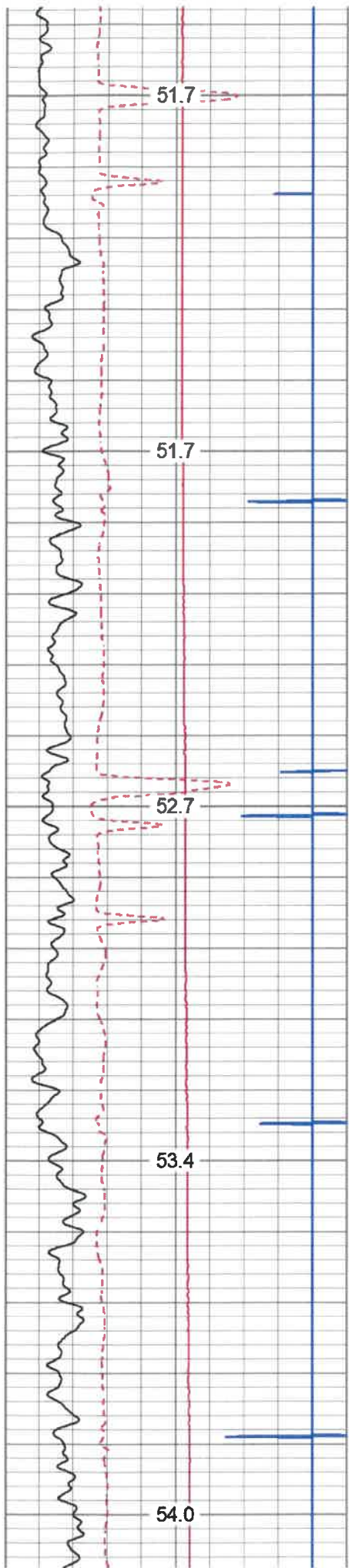
250

300

350

400





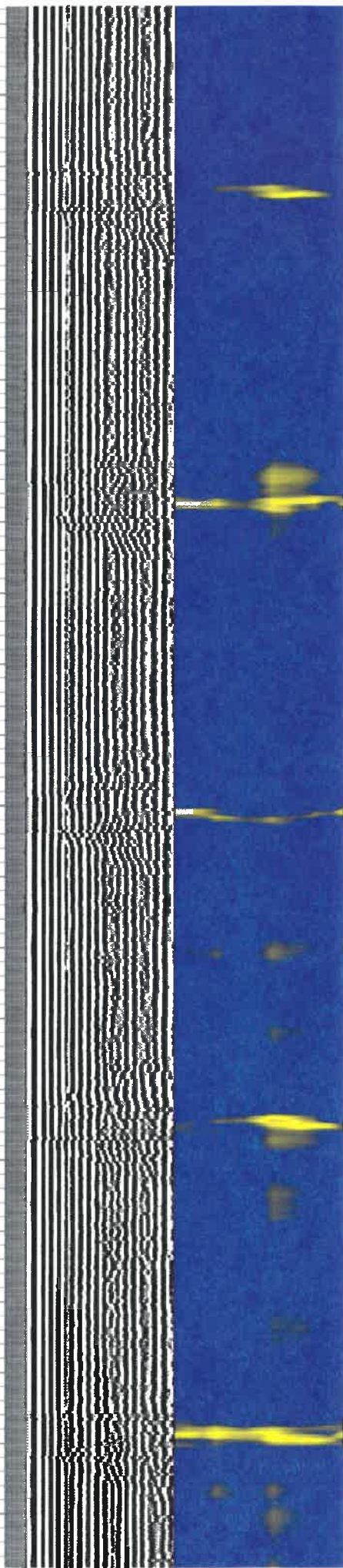
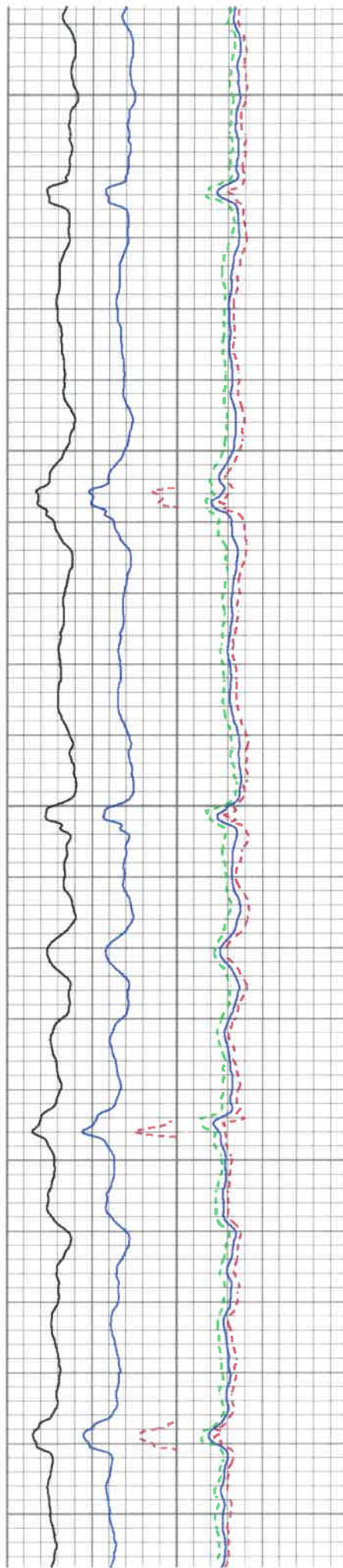
650

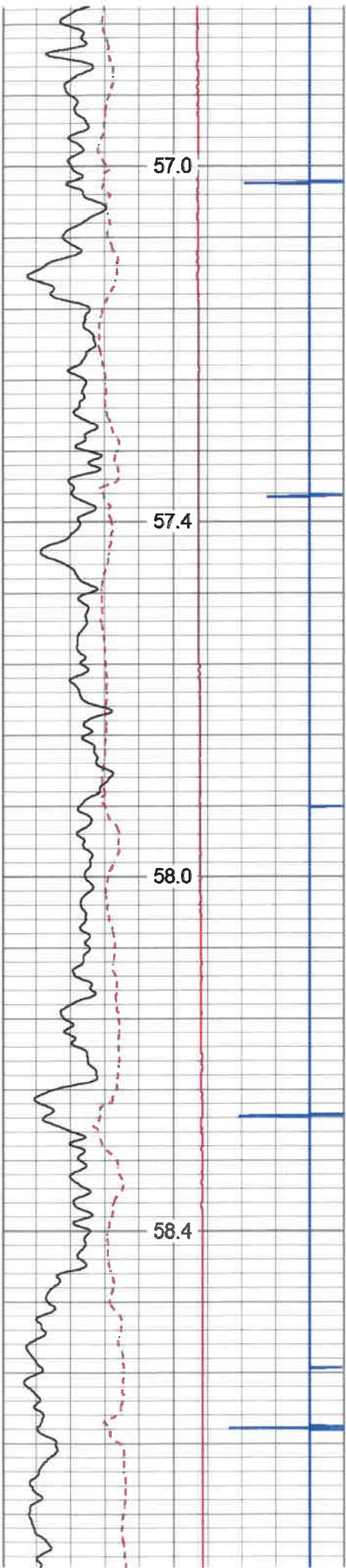
700

750

800

850



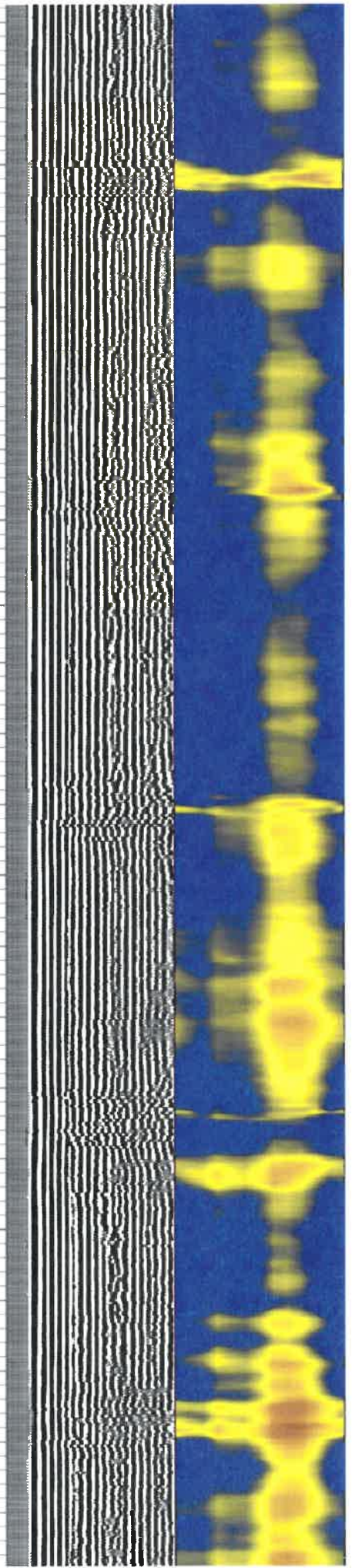
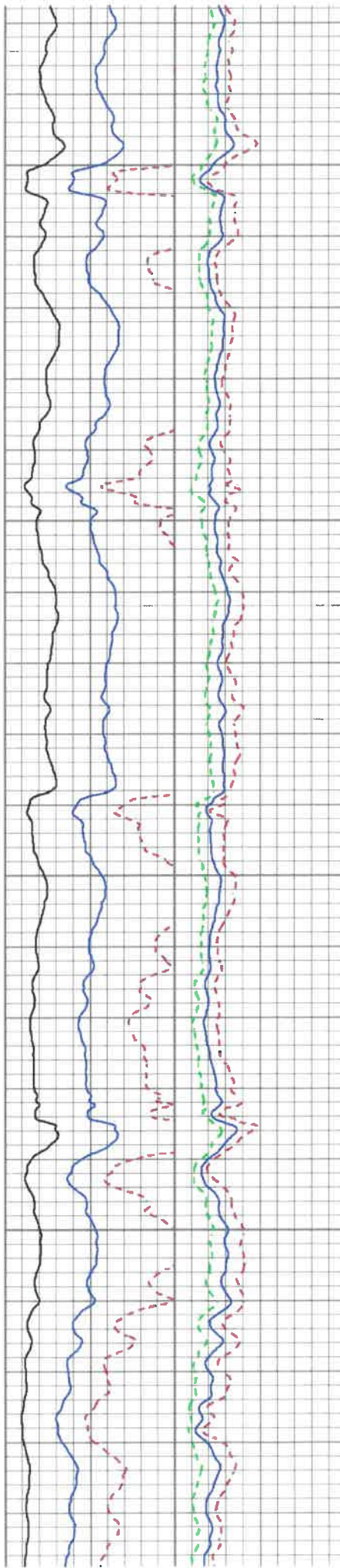


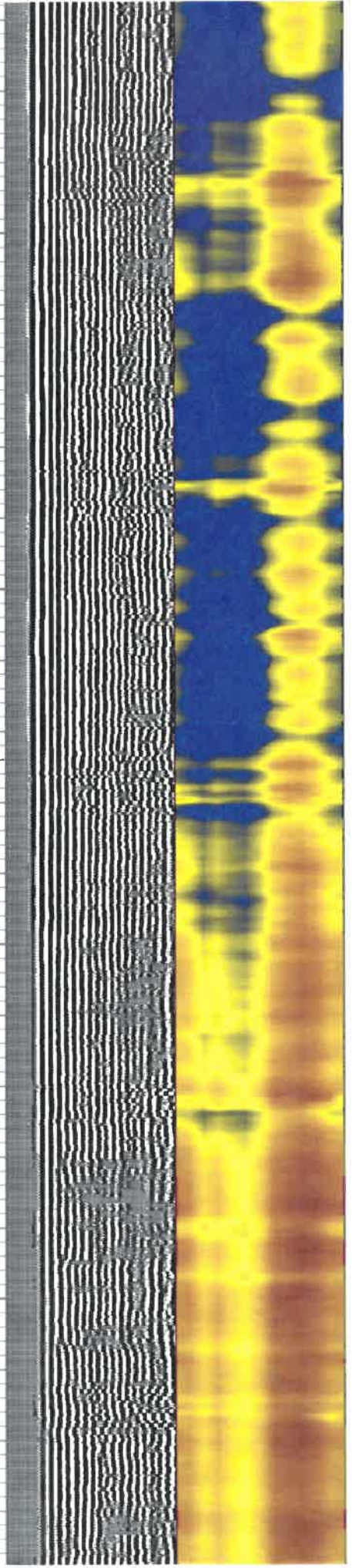
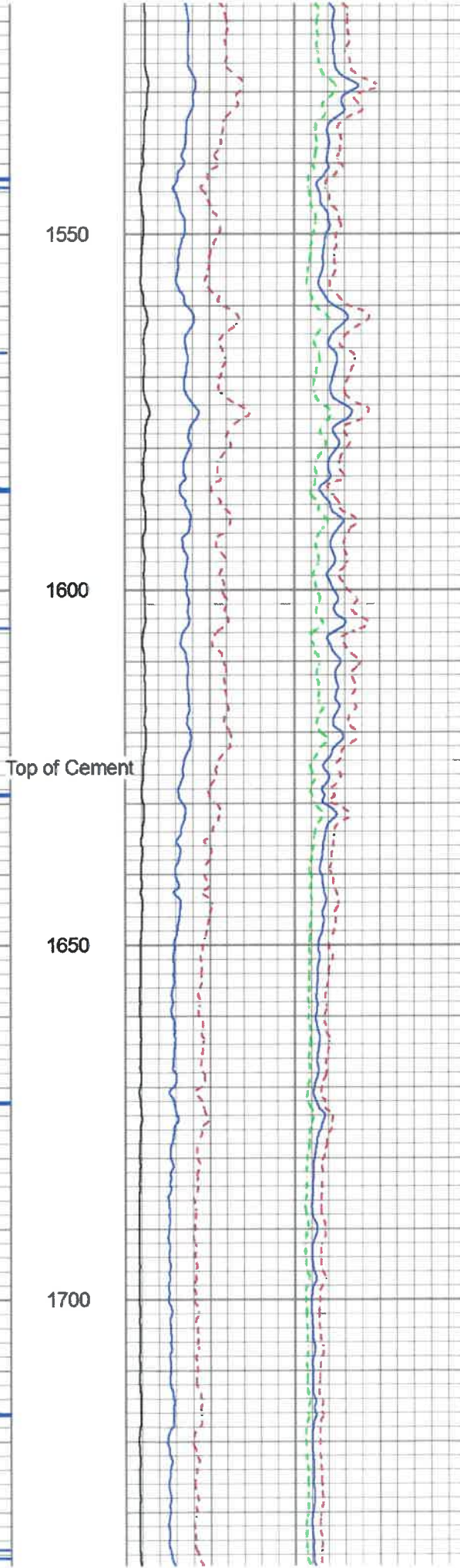
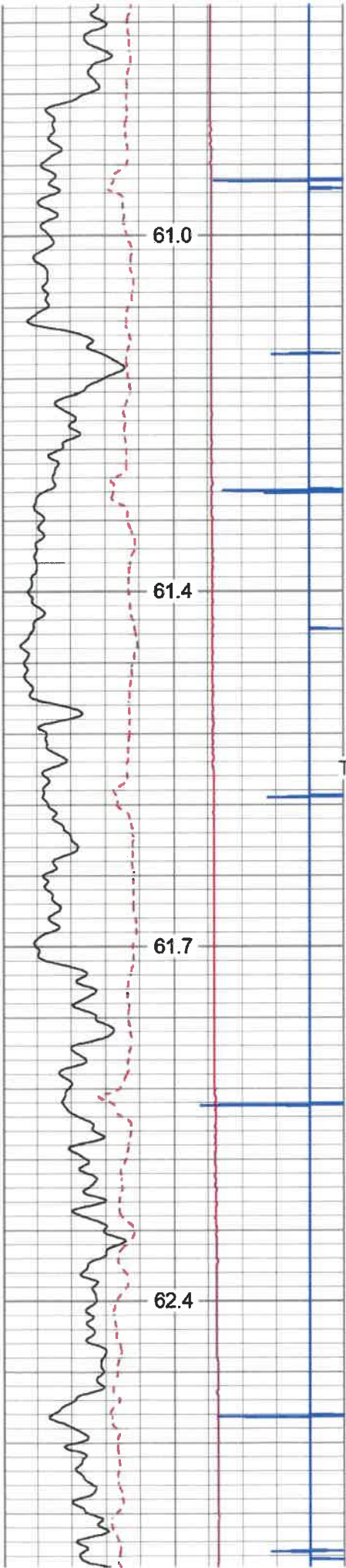
1100

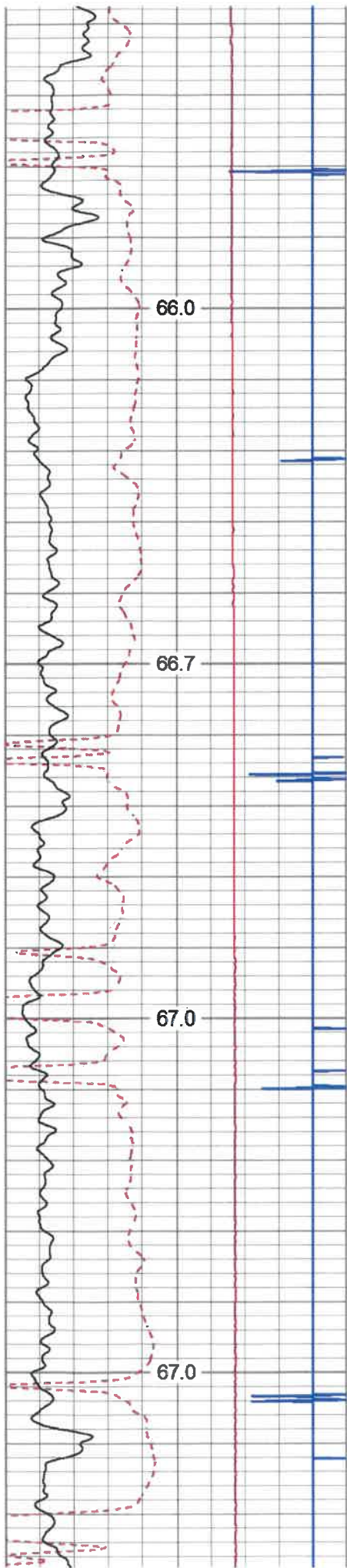
1150

1200

1250





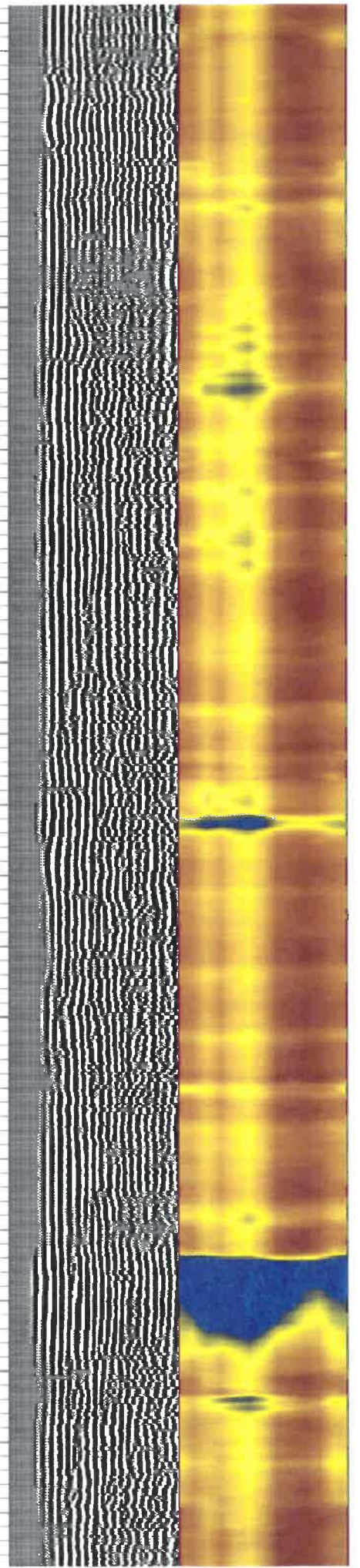
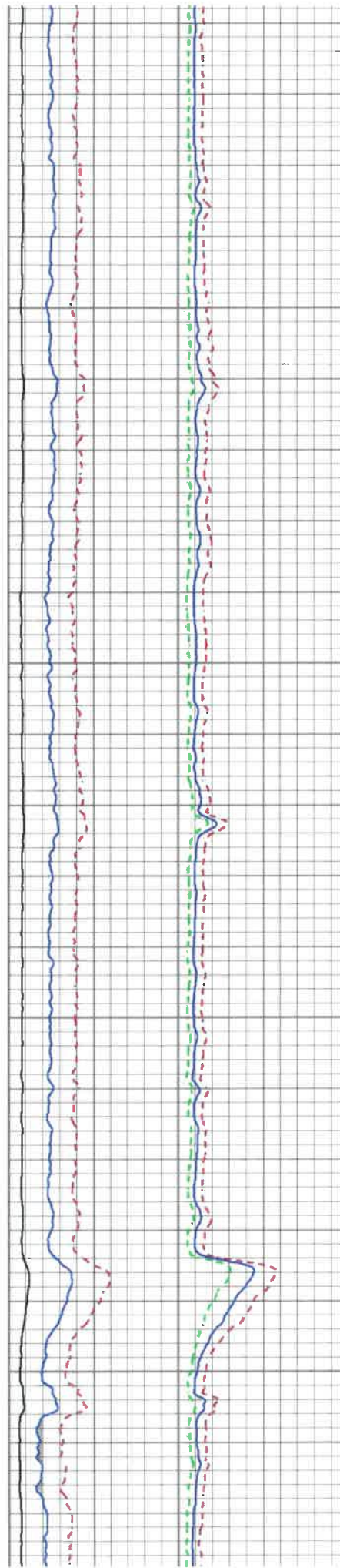


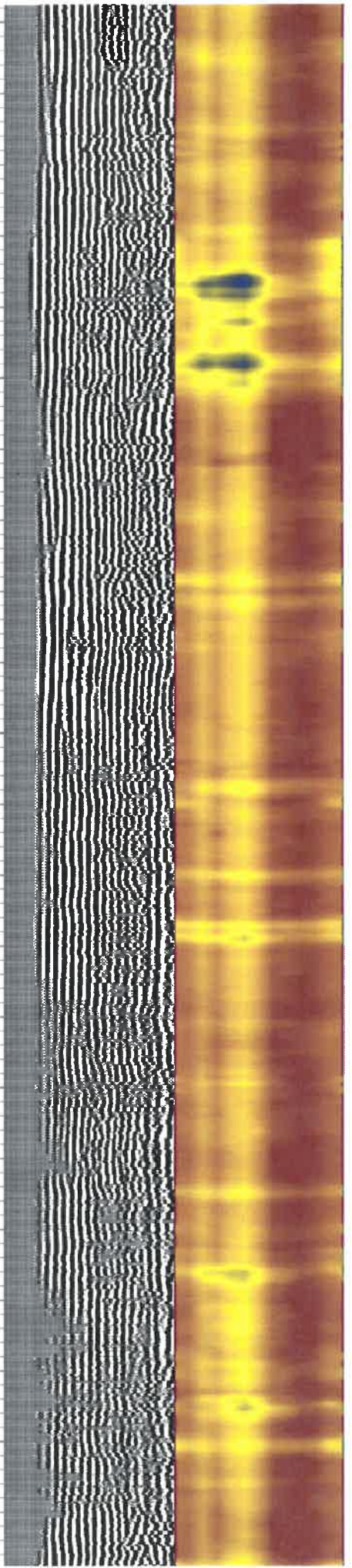
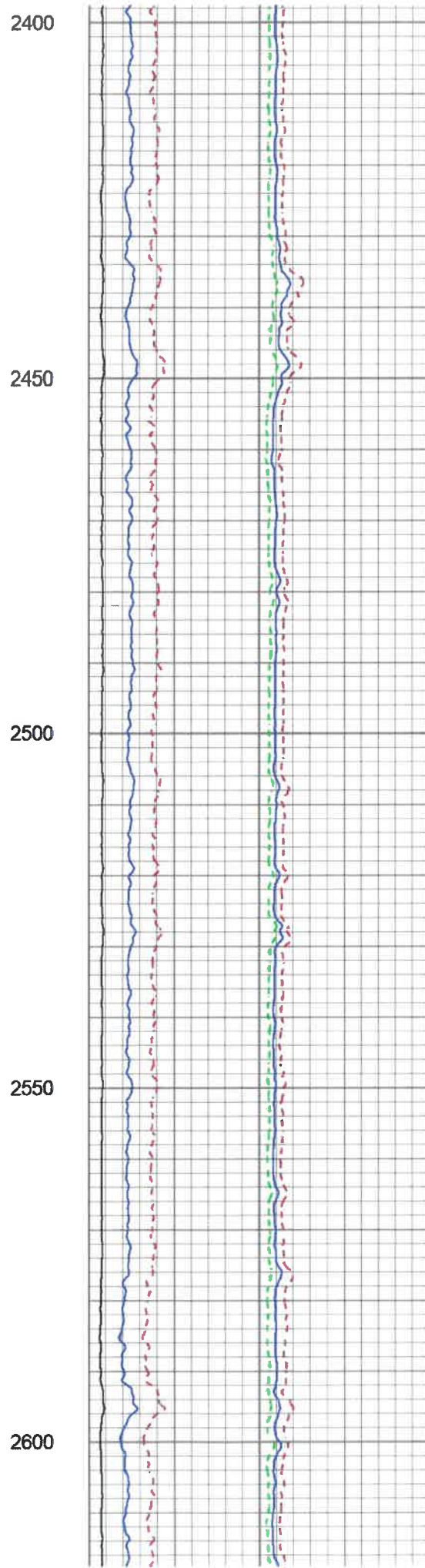
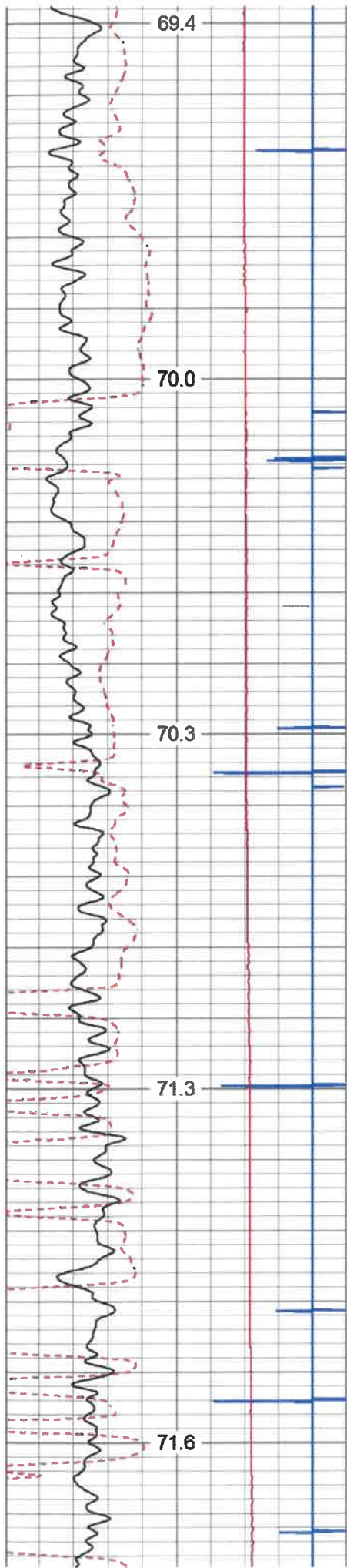
2000

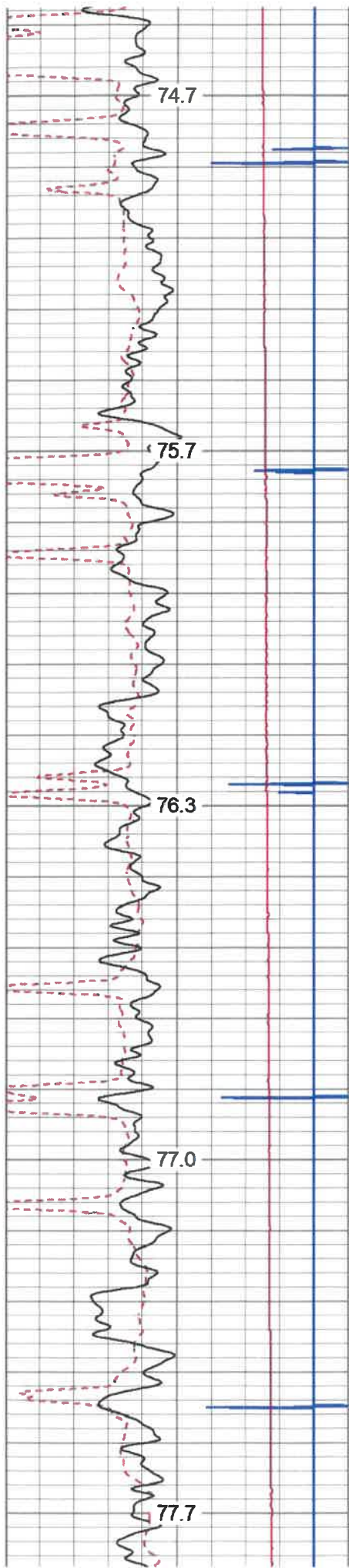
2050

2100

2150







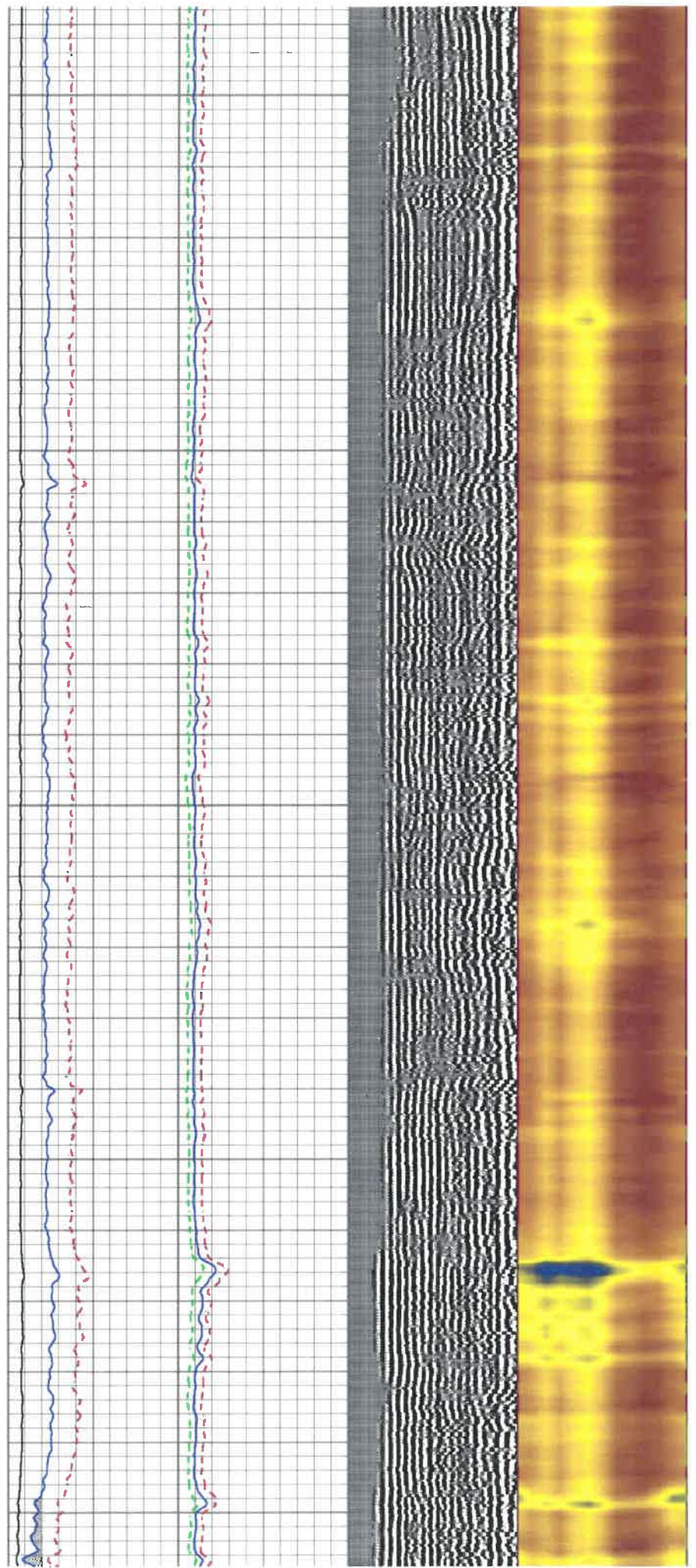
2850

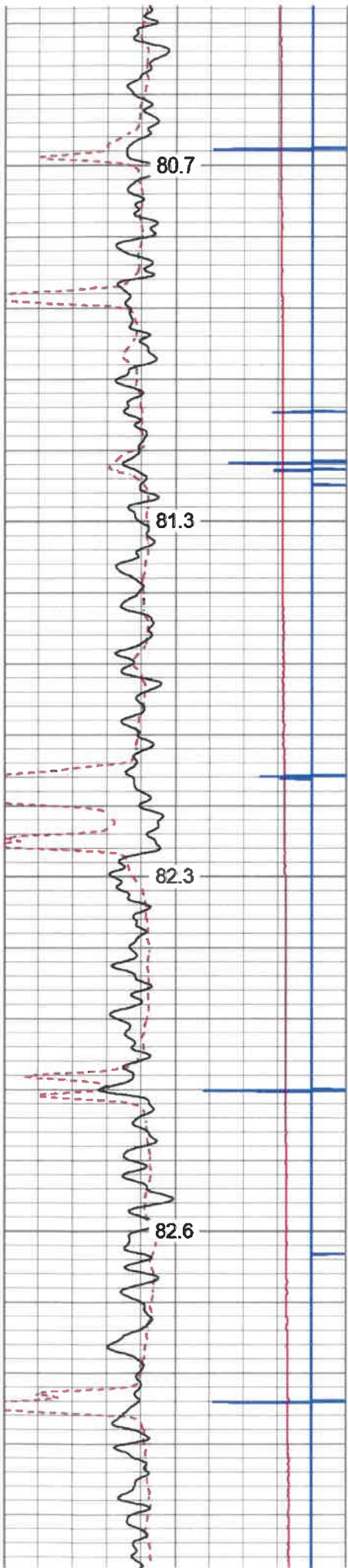
2900

2950

3000

3050



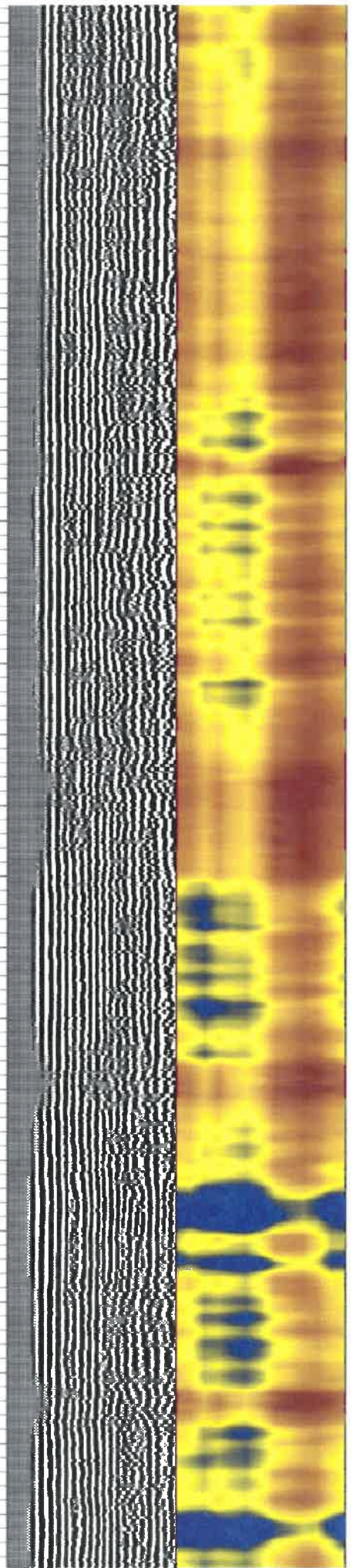
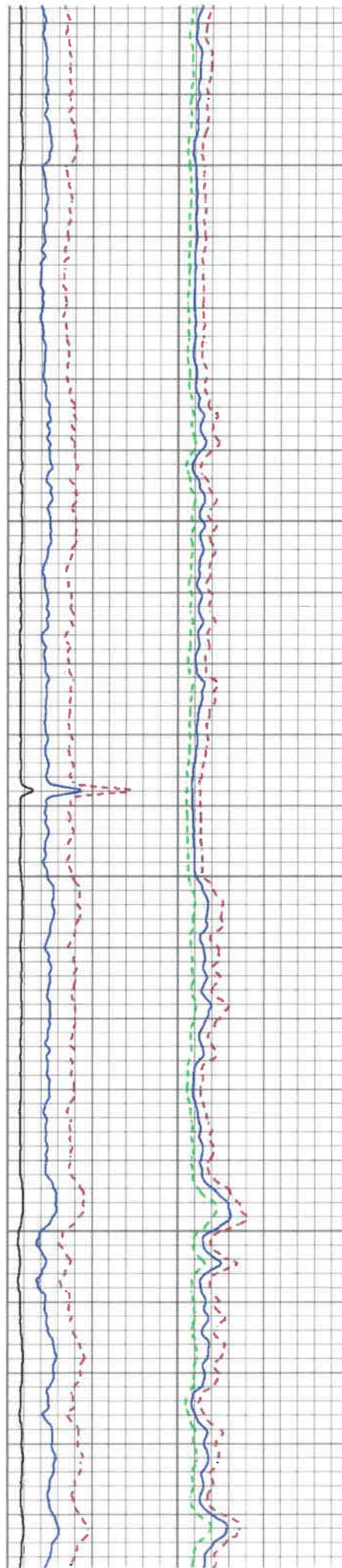


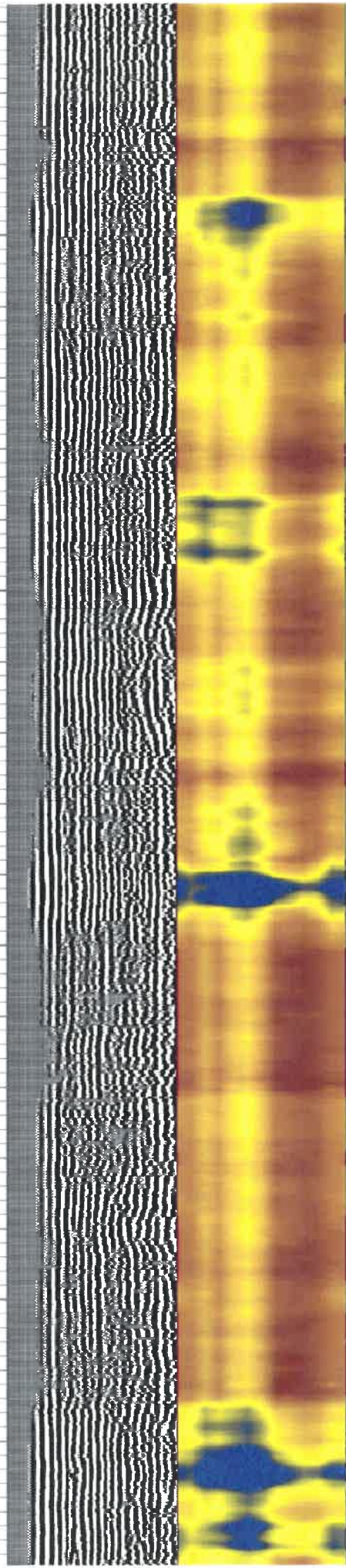
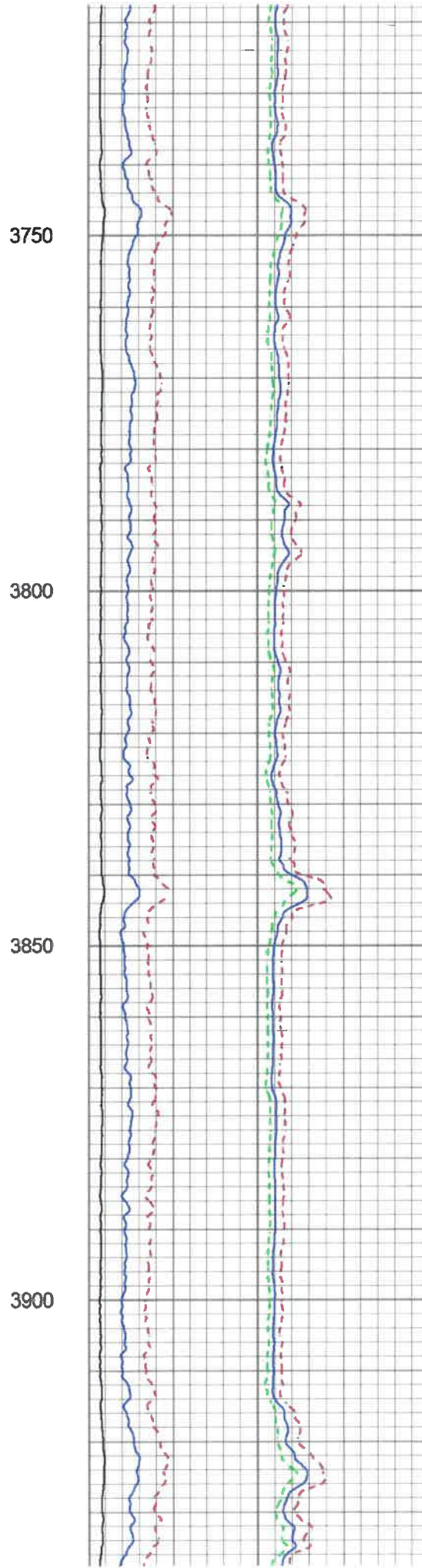
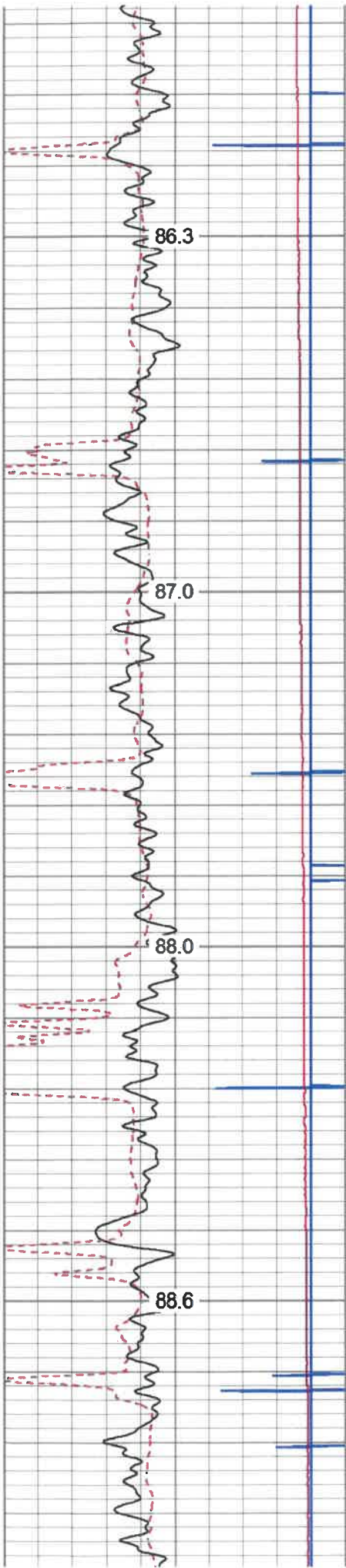
3300

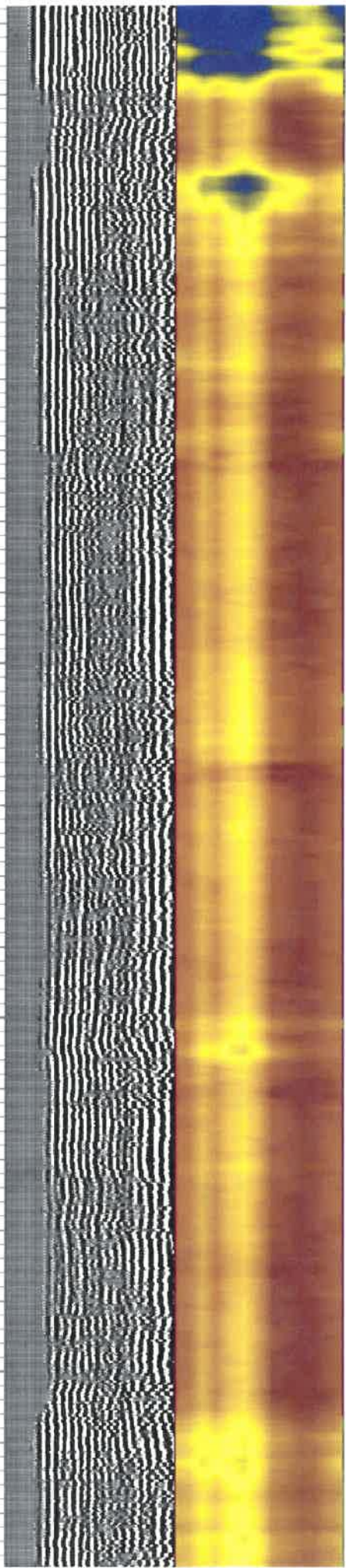
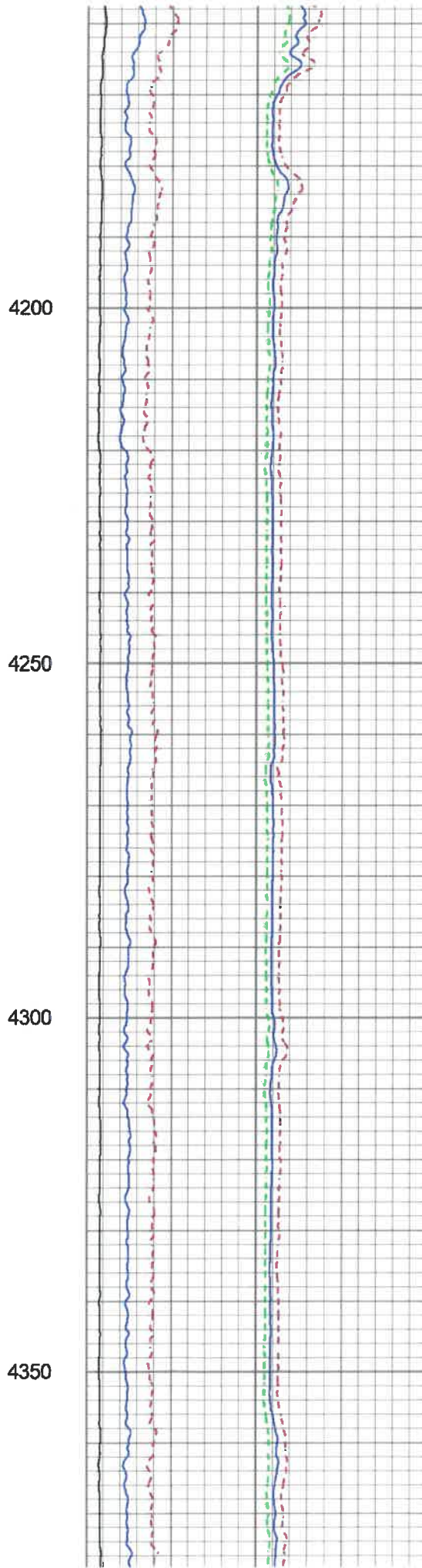
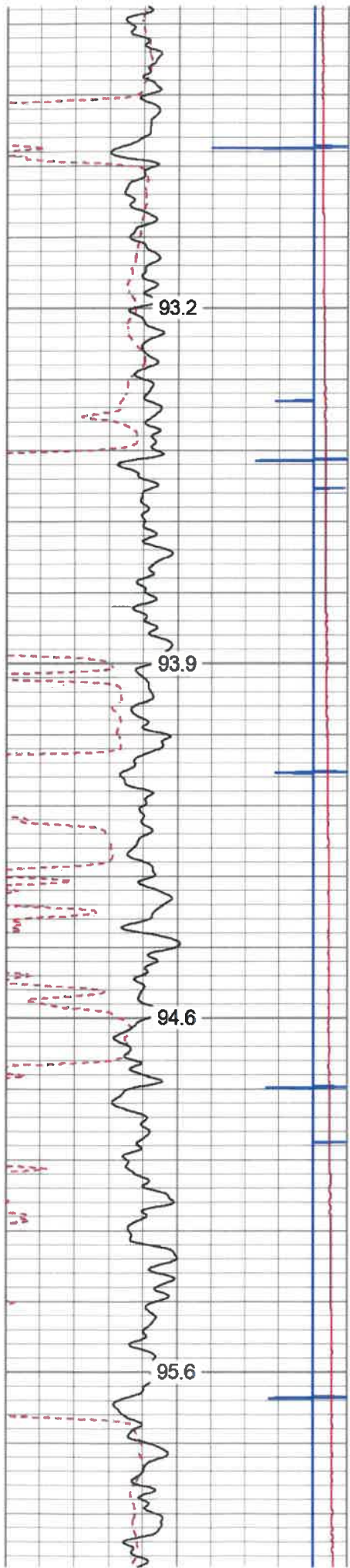
3350

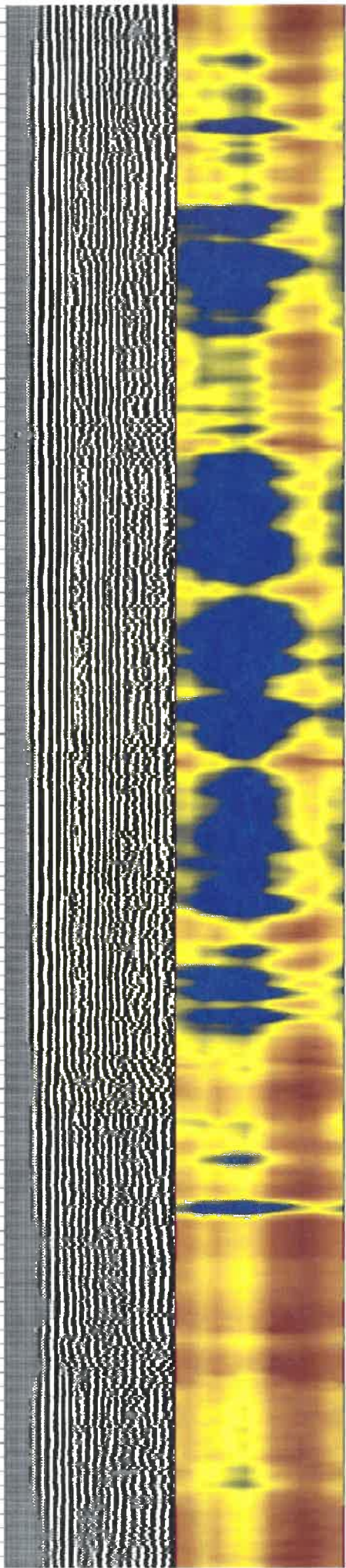
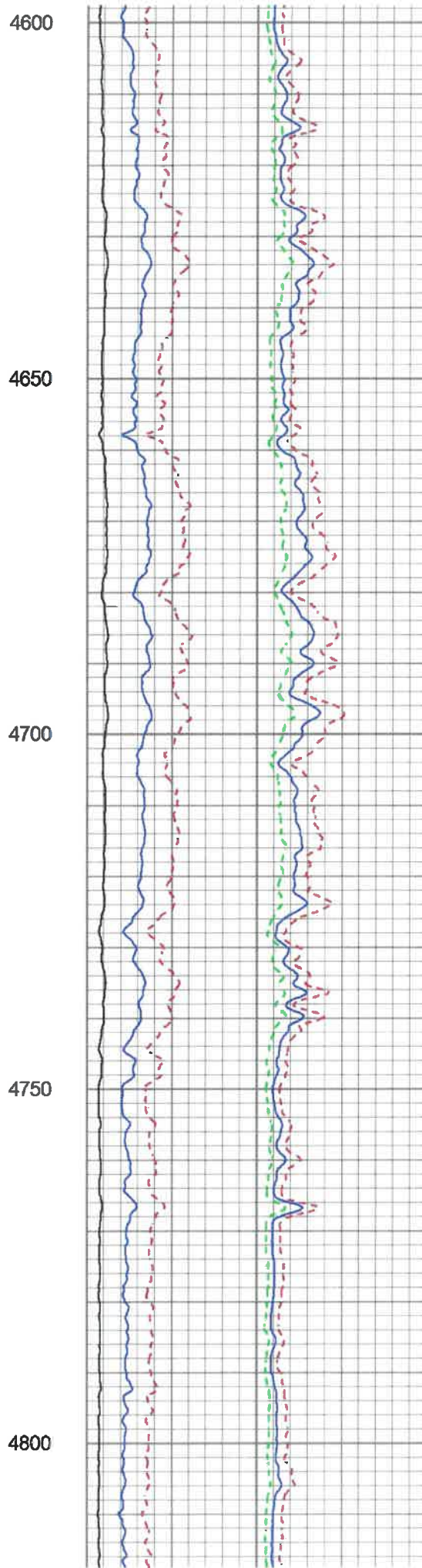
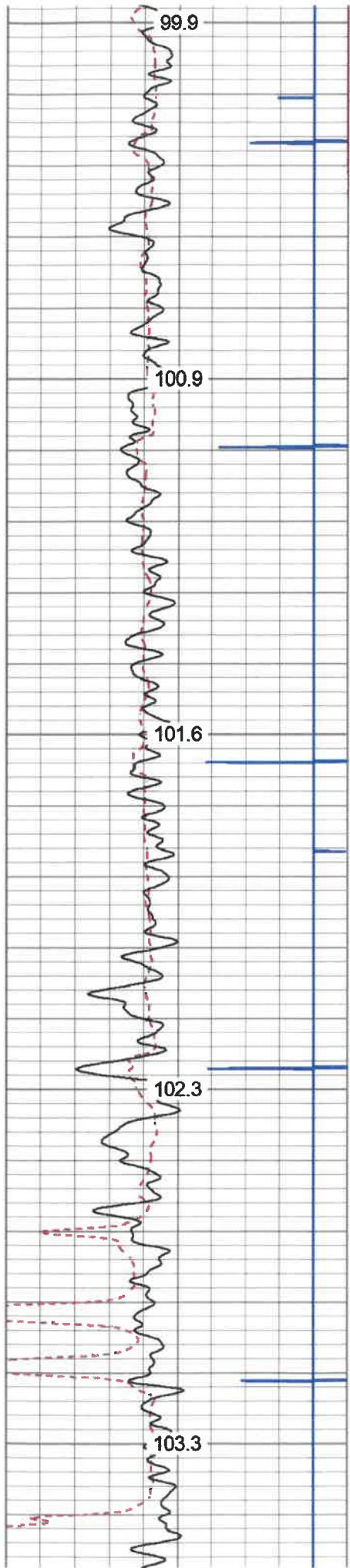
3400

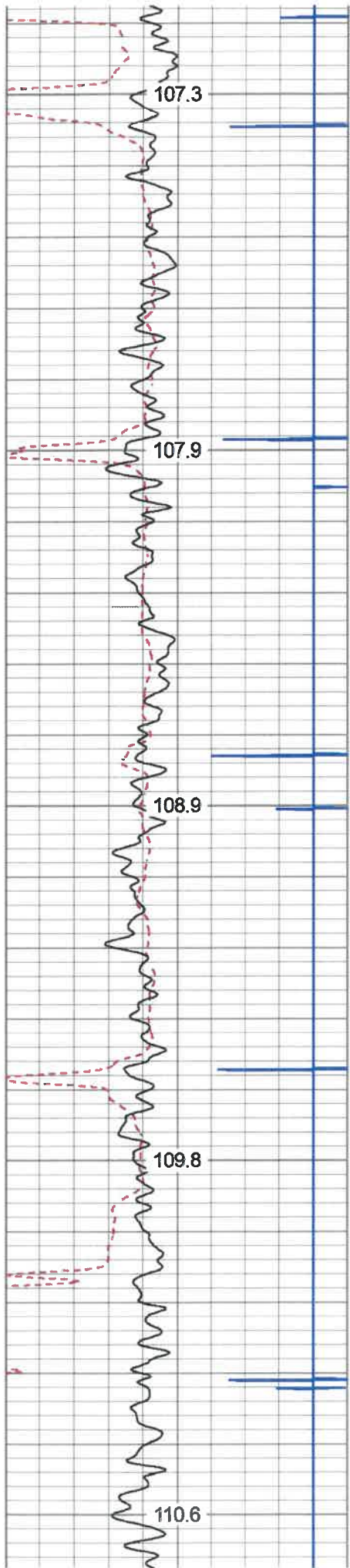
3450











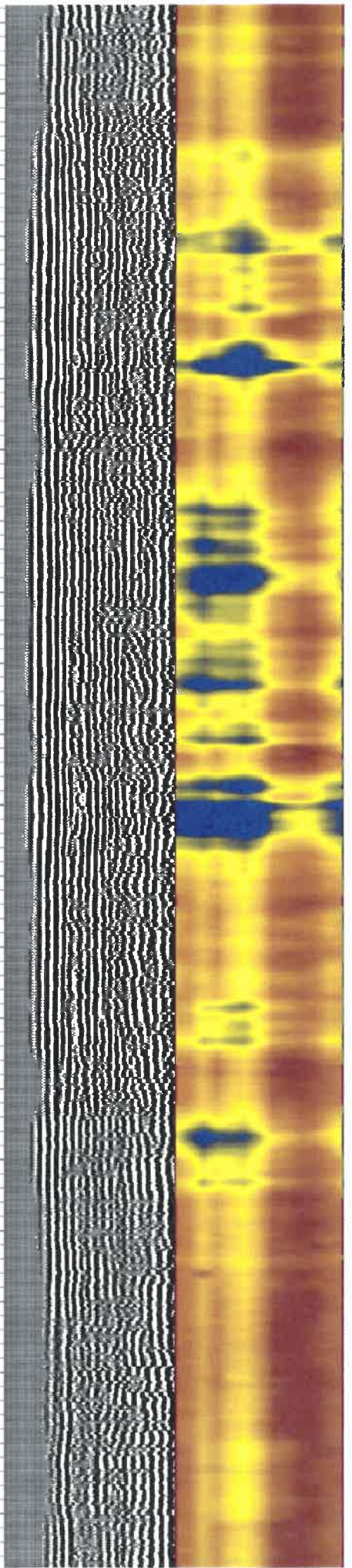
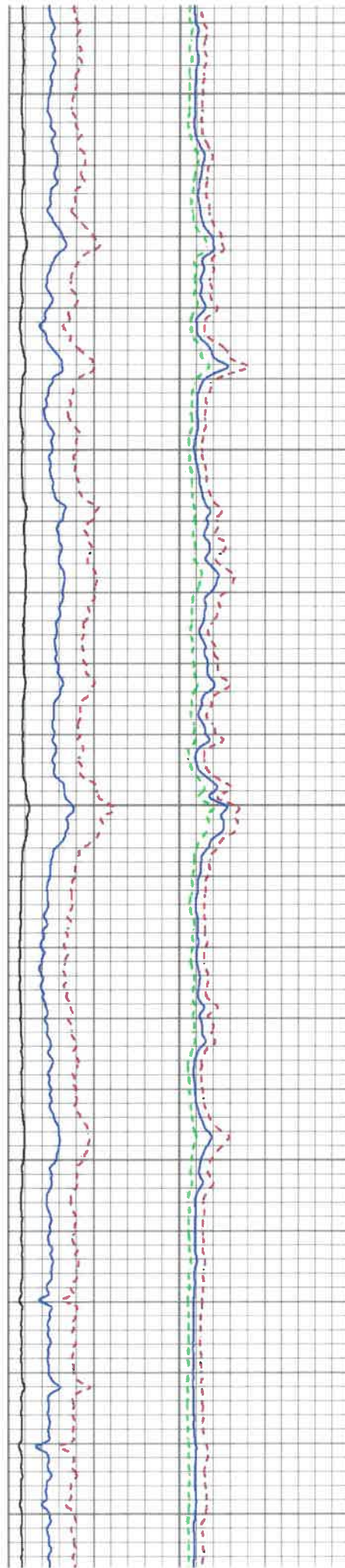
5050

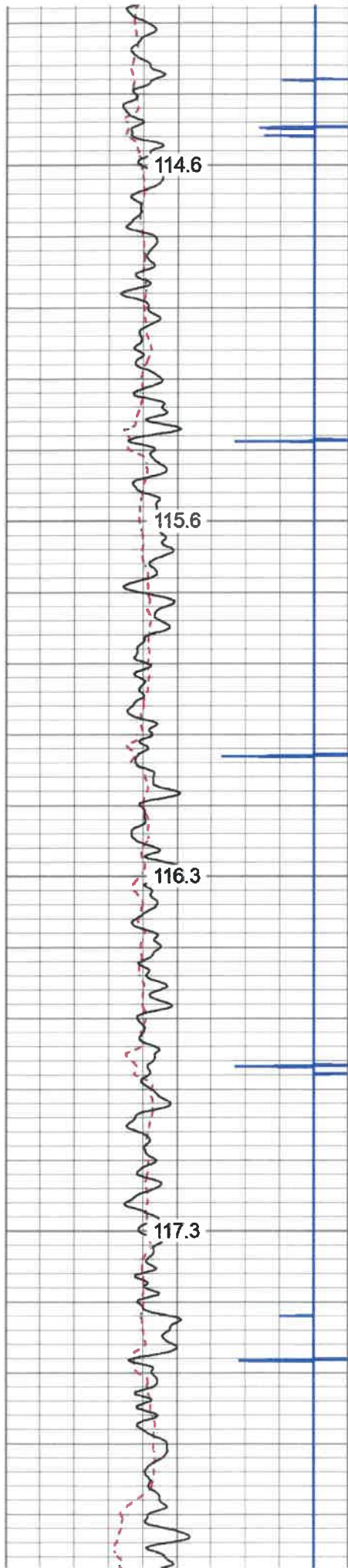
5100

5150

5200

5250



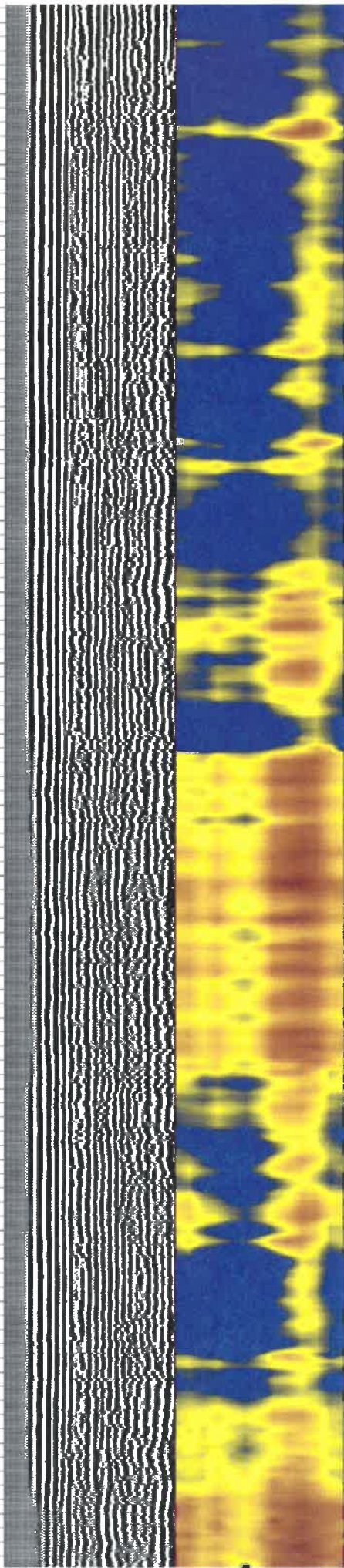
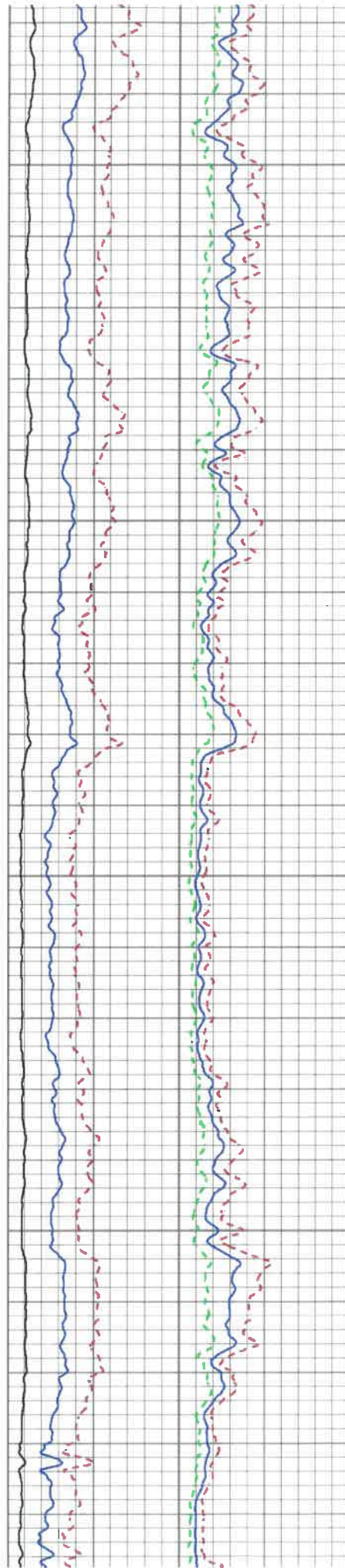


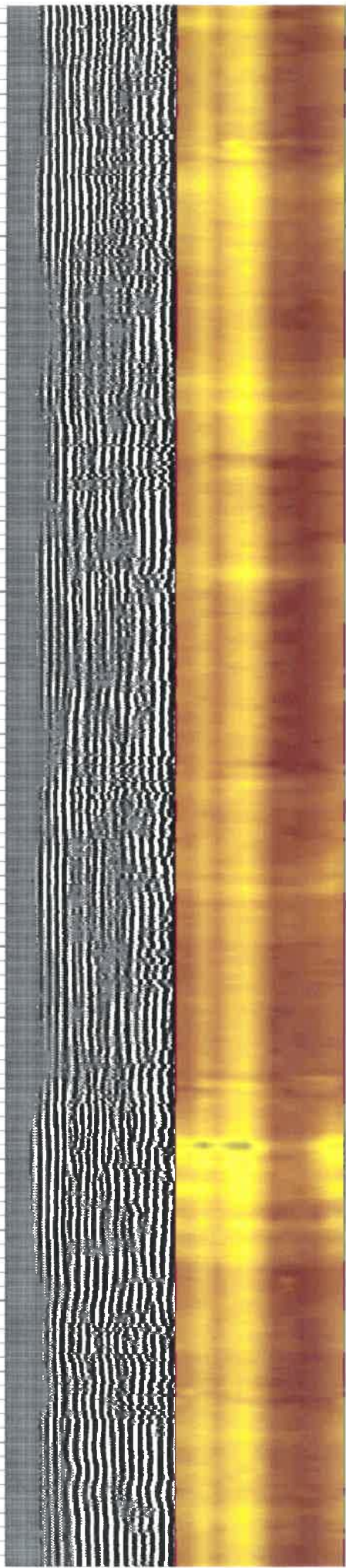
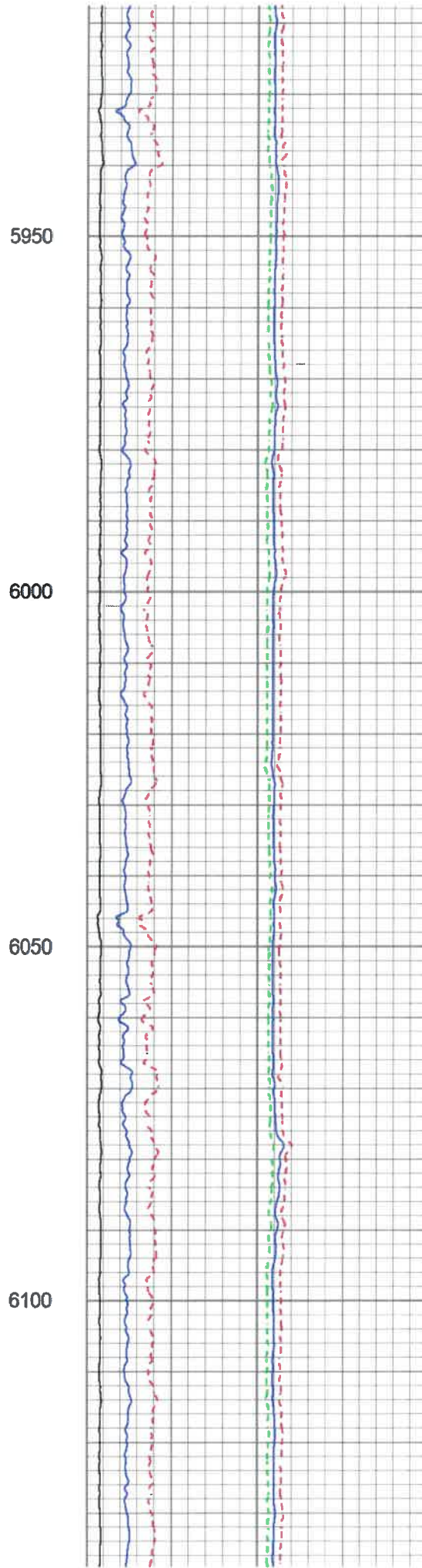
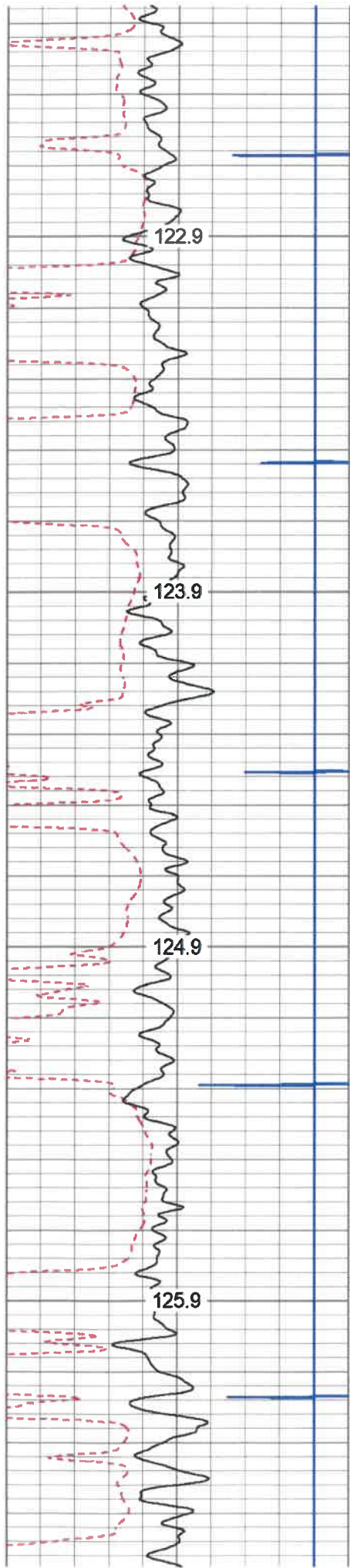
5500

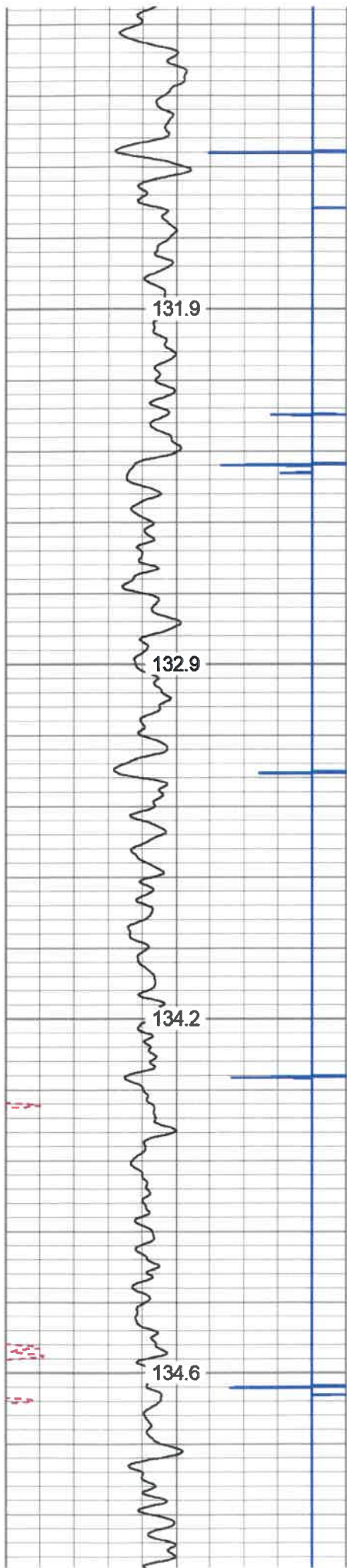
5550

5600

5650





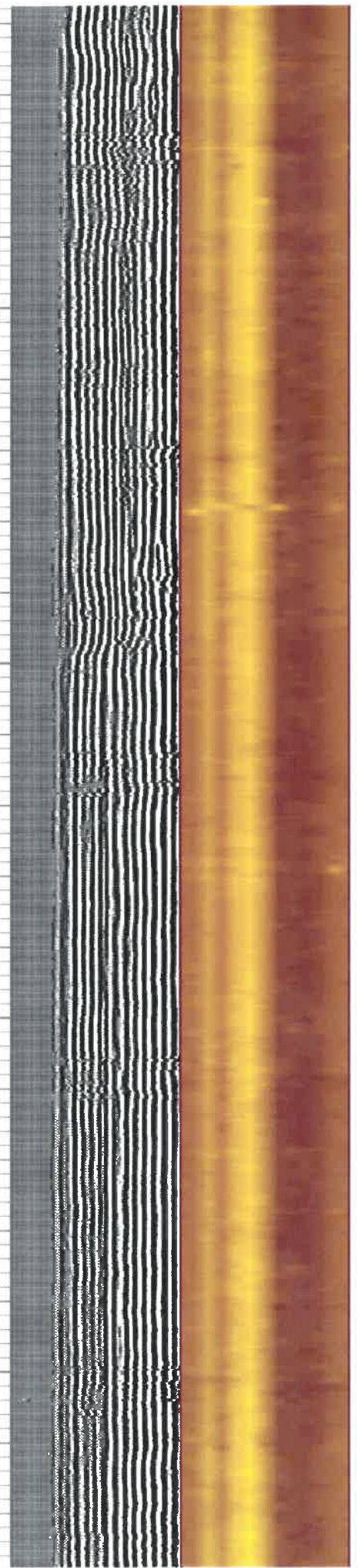
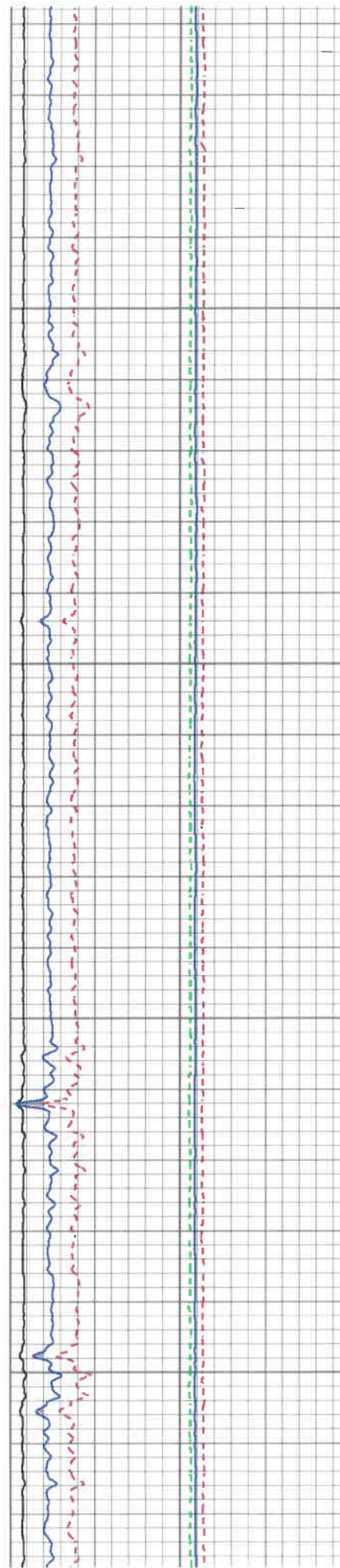


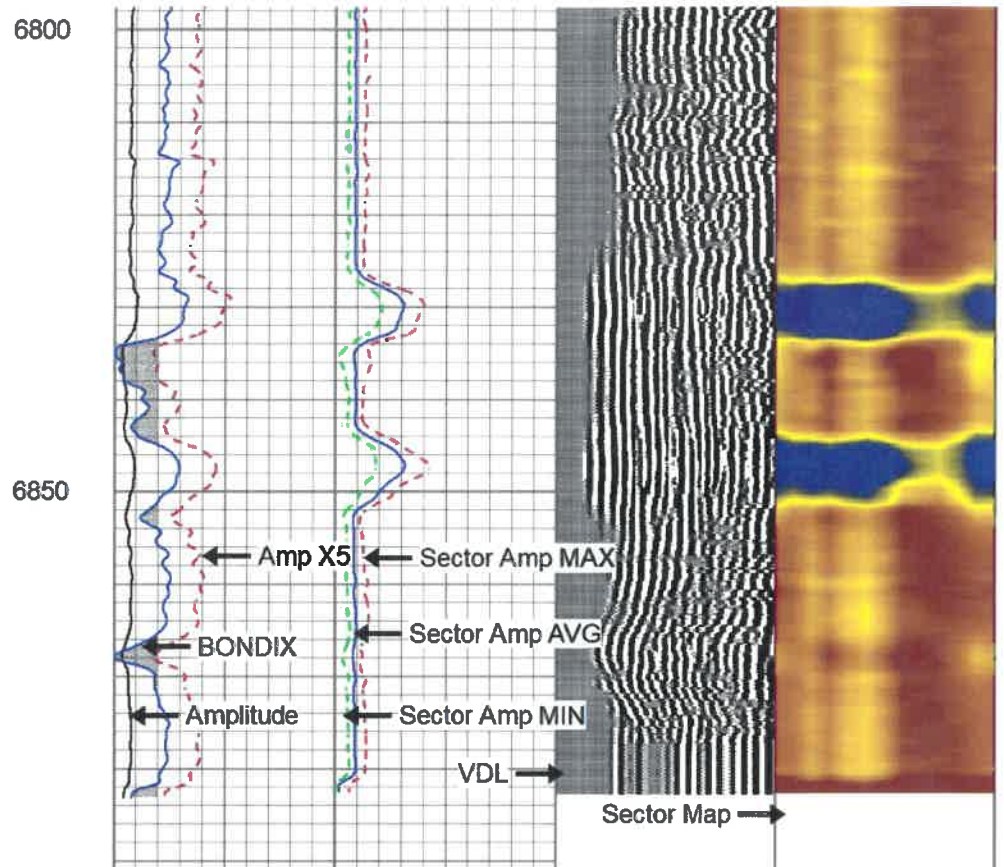
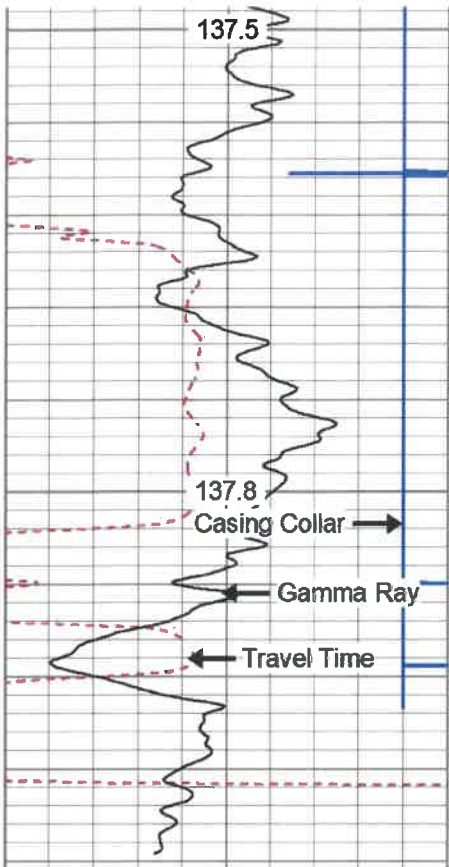
6400

6450

6500

6550





280	Travel Time (usec)	180
9	Casing Collar	-1
0	Gamma Ray (GAPI)	180
0	TEMP (degF)	100
180	GR (GAPI)	360
TEMP (degF)		

Amplitude	Sector Amp AVG	VDL	1	Sector Map 12
0 (mV) 100	Sector Amp MAX	200 (usec) 1200		
Amp X5	Sector Amp MIN			
0 (mV) 20				
1 BONDIX 0				

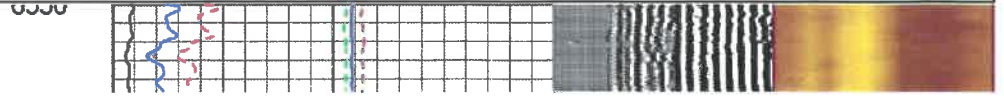
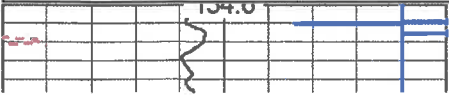


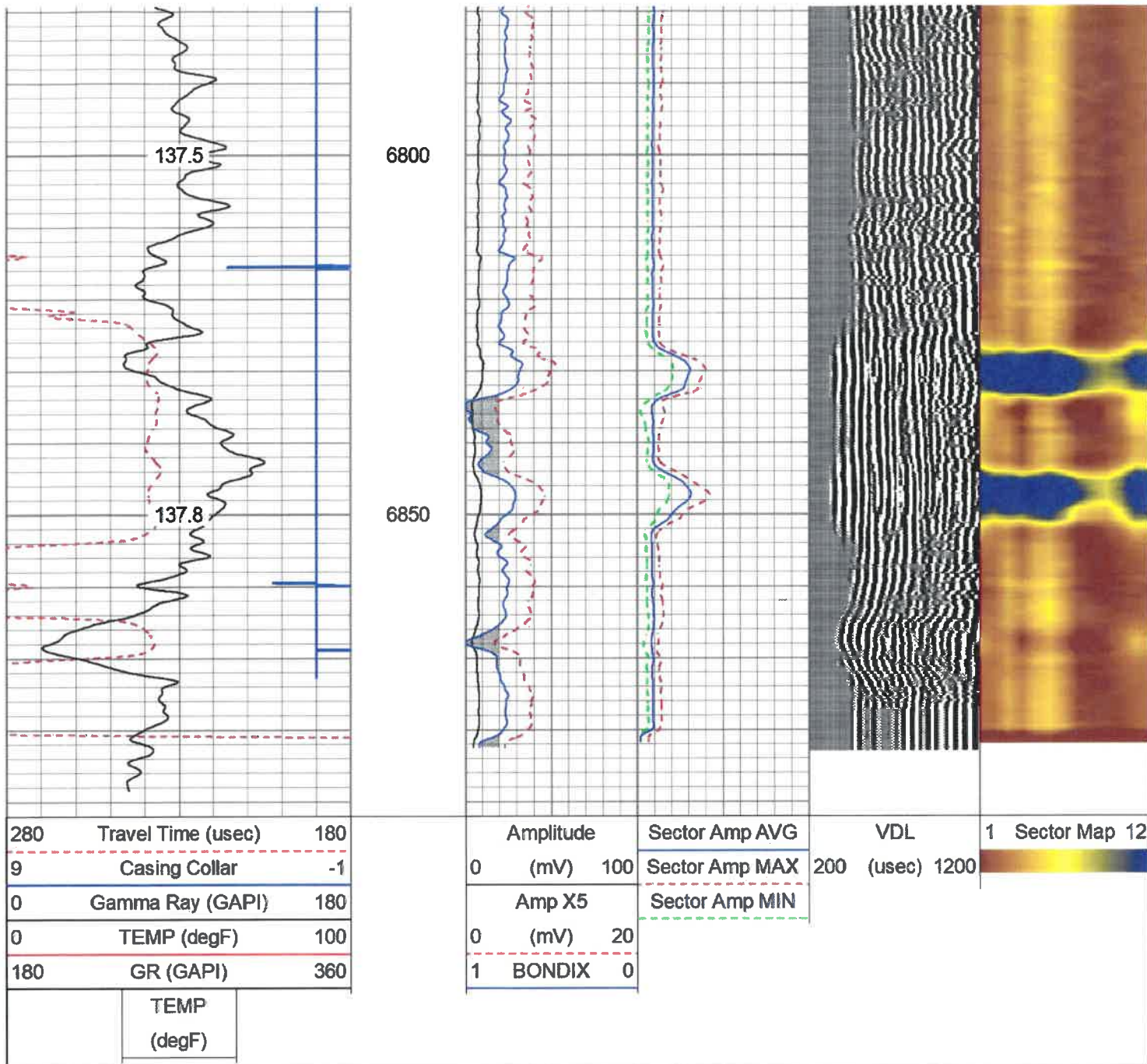
REPEAT PASS

Database File: sterling2h.db
 Dataset Pathname: pass5.15R
 Presentation Format: antero
 Dataset Creation: Fri May 17 10:35:33 2019
 Charted by: Depth in Feet scaled 1:240

280	Travel Time (usec)	180
9	Casing Collar	-1
0	Gamma Ray (GAPI)	180
0	TEMP (degF)	100
180	GR (GAPI)	360
TEMP (degF)		

Amplitude	Sector Amp AVG	VDL	1	Sector Map 12
0 (mV) 100	Sector Amp MAX	200 (usec) 1200		
Amp X5	Sector Amp MIN			
0 (mV) 20				
1 BONDIX 0				





Calibration Report

Database File sterling2h.db
 Dataset Pathname pass5.14
 Dataset Creation Mon May 13 16:01:25 2019

Gamma Ray Calibration Report




Serial Number: 0111
 Tool Model: Tek-Co 2 3/4
 Performed: Thu May 02 12:24:19 2019

Calibrator Value: 1.0 GAPI

Background Reading: 0.0 cps
 Calibrator Reading: 1.0 cps

Sensitivity: 0.5000 GAPI/cps

Segmented Cement Bond Log Calibration Report

Sensor	Offset (ft)	Schematic	Description	Length (ft)	O.D. (in)	Weight (lb)
CCL	19.20		Titan-1.4375 1 7/16 Titan Type II Cable Head	1.03	1.44	5.00
			CCL-312tekco (101) Tekco 3 1/8" 450 Deg. "F" SmCo Logging CCL	1.82	3.12	25.00
			Tek-2.75 2 3/4" Tekco Adjustable Centralizer	2.73	2.75	25.00
TEMP	13.04		SCBL-Tek12 (T12_01) Tekco 400 Deg F 12 Sector RIB with Temp	9.13	3.25	135.00
WVFSYNC	13.04					
WVFCAL	13.04					
WVFS12	11.75					
WVFS11	11.75					
WVFS10	11.75					
WVFS9	11.75					
WVFS8	11.75					
WVFS7	11.75					
WVFS6	11.75					
WVFS5	11.75					
WVFS4	11.75					
WVFS3	11.75					
WVFS2	11.75					
WVFS1	11.75					
WVF3FT	11.00					
WVF5FT	10.00					
WVFTEMP	6.67	Tek-2.75 2 3/4" Tekco Adjustable Centralizer	2.73	2.75	25.00	
GR	1.31		GR-Tek-Co 2 3/4 (0111) Tekco 2 3/4" 400 Deg. F Logging Gamma Ray	3.67	2.75	40.00
			Titan-1.4375_Cap Titan 1 7/16" Cap	0.27	1.44	1.00

Dataset: sterling2h.db: field/well/run1/pass5.14
 Total length: 21.37 ft