



**Segmented Radial Cement Bond
W/Gamma Ray, CCL
Log**

Company Antero Resources Corporation Well Weese Unit 2H Field Marcellus County Tyler State WV Country US	Company Antero Resources Corporation Well Weese Unit 2H Field Marcellus County Tyler State WV Country US	Location: API #: 47095025530000 Other Services	
Permanent Datum Log Measured From Drilling Measured From	SEC TWP RGE Ground Level R.K.B. 25' R.K.B.	Elevation K.B. D.F. G.L.	
Date	14-NOV-2019		
Run Number	ONE		
Depth Driller	21419'		
Depth Logger	6440'		
Bottom Logged Interval	6440'		
Top Log Interval	Surface		
Open Hole Size	8.25"		
Type Fluid	F/W		
Density / Viscosity	8.6		
Max. Recorded Temp.	135 degF		
Estimated Cement Top	2300'		
Time Well Ready	N/A		
Time Logger on Bottom	N/A		
Equipment Number	214182		
Location	Bridgeport, WV		
Recorded By	S. Butler		
Witnessed By	Jerrako Evans		
Borehole Record			
Run Number	Bit	From	To
ONE	24"	Surface	80'
TWO	17.5"	80'	450'
THREE	12.25"	450'	2552'
FOUR	8.25"	2552'	21419'
Tubing Record			
Casing Record	Size	Mgt/Ft	Top
Surface String	13.375"	54.5	Surface
Prot. String	9.625"	40	Surface
Production String	5.5"	20	Surface
Liner			Bottom
			450'
			2552'
			21419'

<<< Fold Here >>>

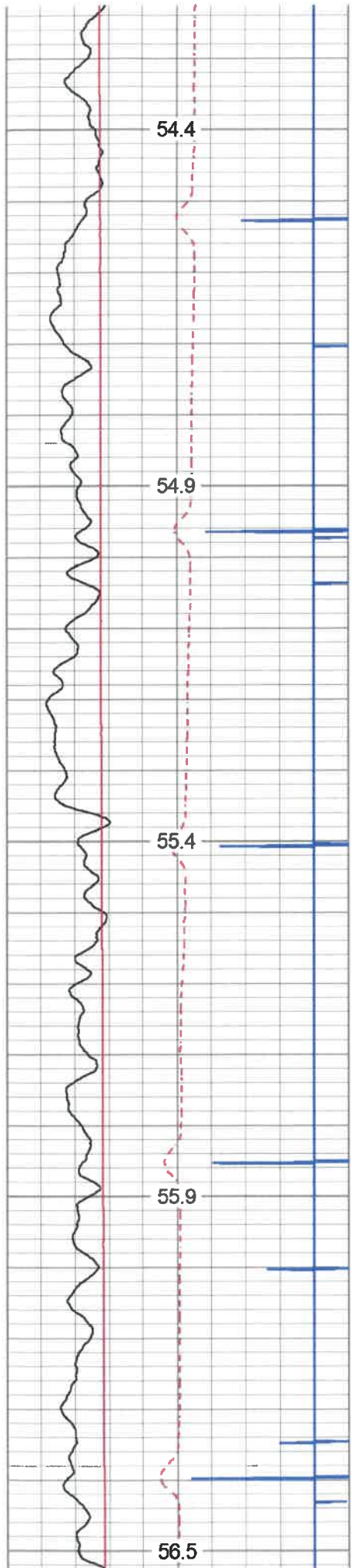
All interpretations are opinions based on inferences from electrical or other measurements and we cannot and do not guarantee the accuracy or correctness of any interpretation, and we shall not, except in the case of gross or willful negligence on our part, be liable or responsible for any loss, costs, damages, or expenses incurred or sustained by anyone resulting from any interpretation made by any of our officers, agents or employees. These interpretations are also subject to our general terms and conditions set out in our current Price Schedule.

Comments

Zero @ R.K.B. 25'
 Marker Joint 5368' - 5378'
 Log TD 6440'
 Cement Top @ 2300'
 Log Ran Under 1500 PSI



Main Pass



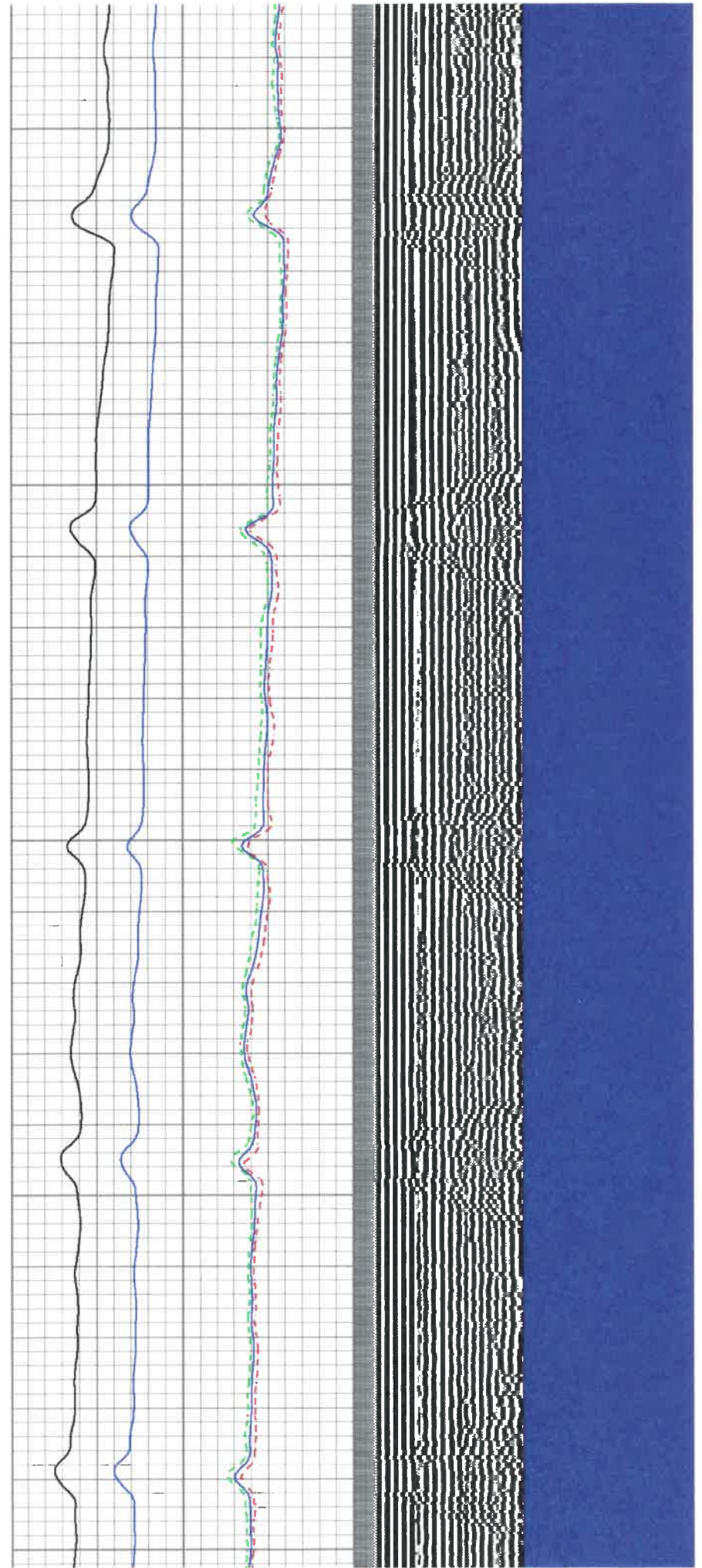
200

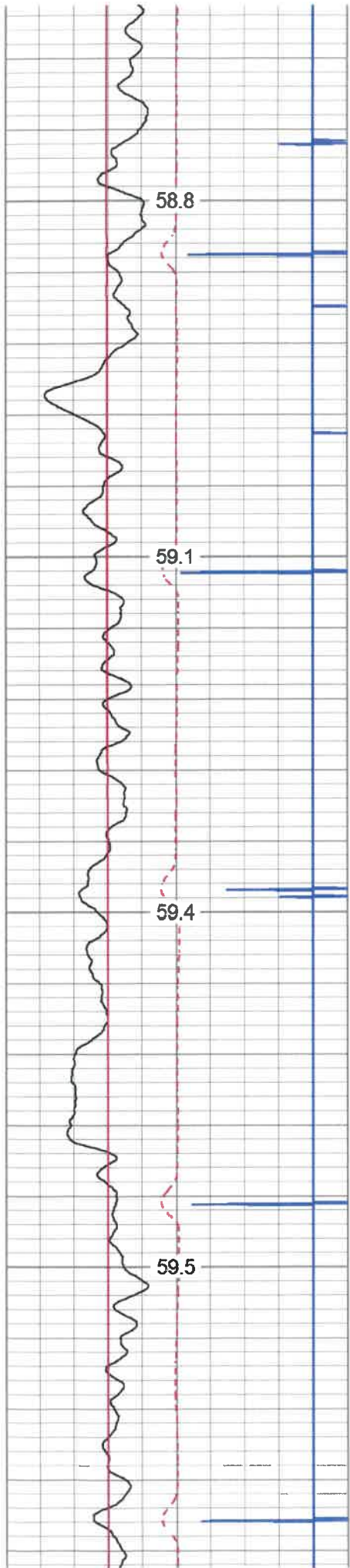
250

300

350

400



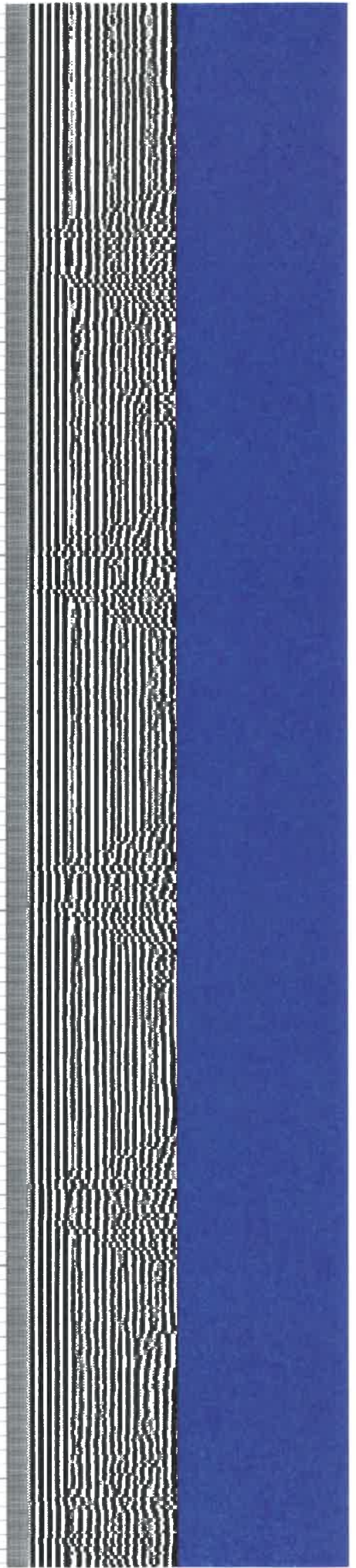
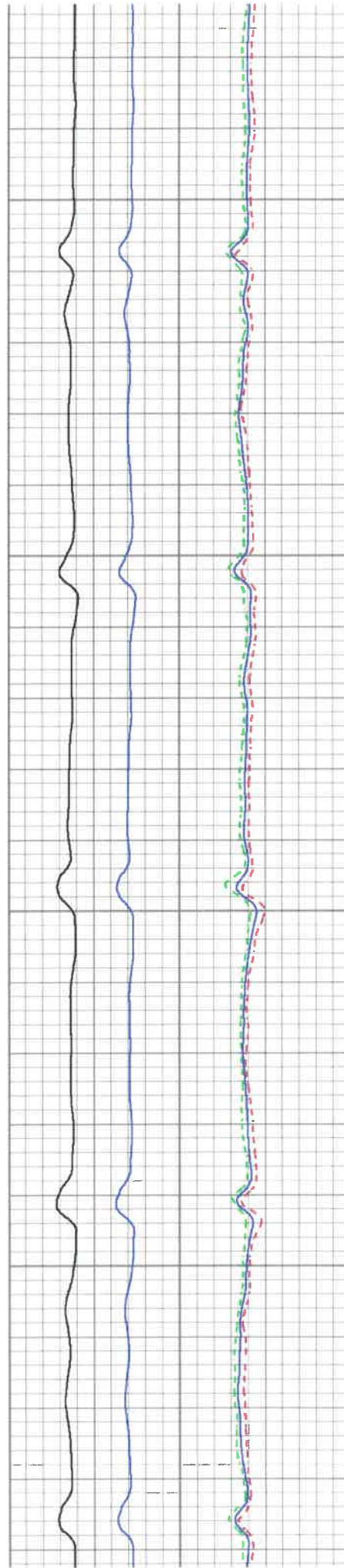


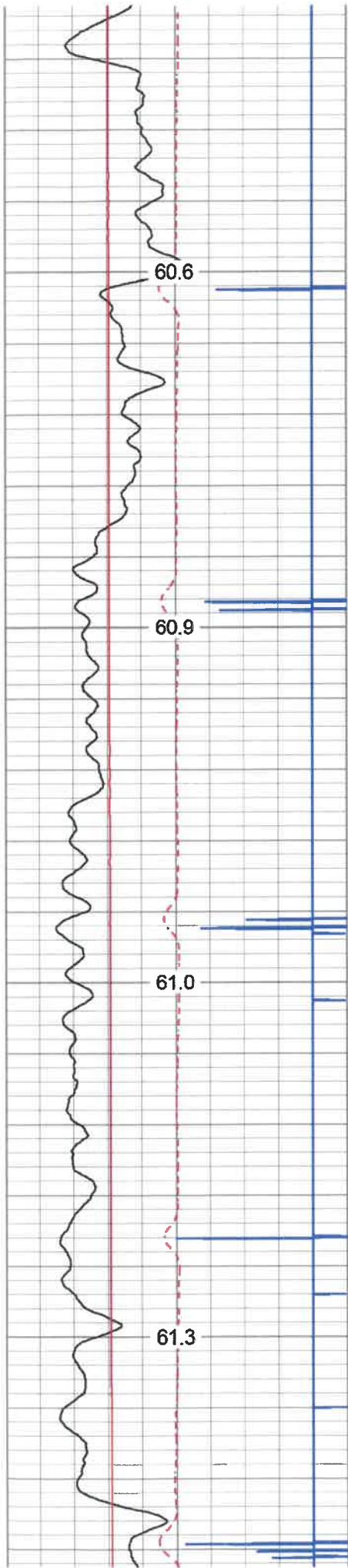
650

700

750

800



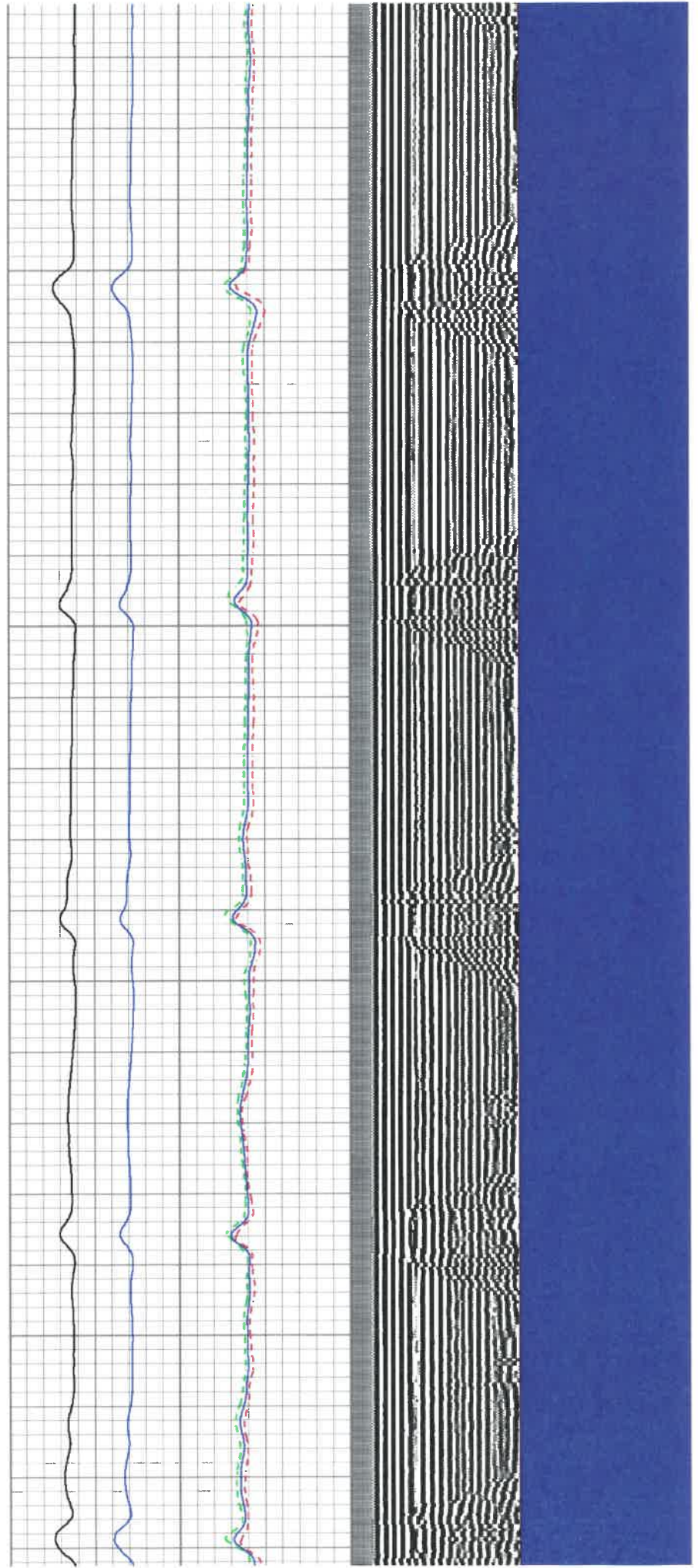


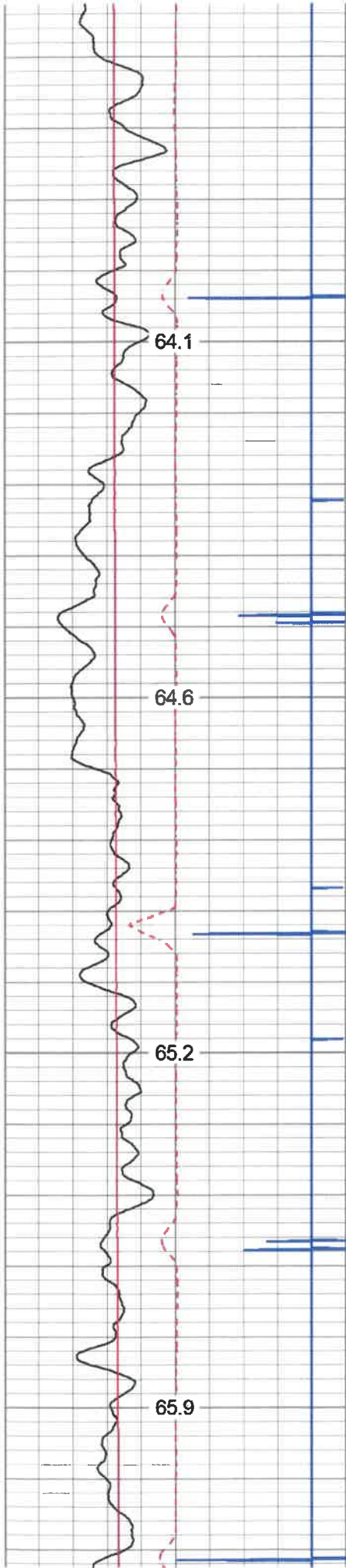
1100

1150

1200

1250



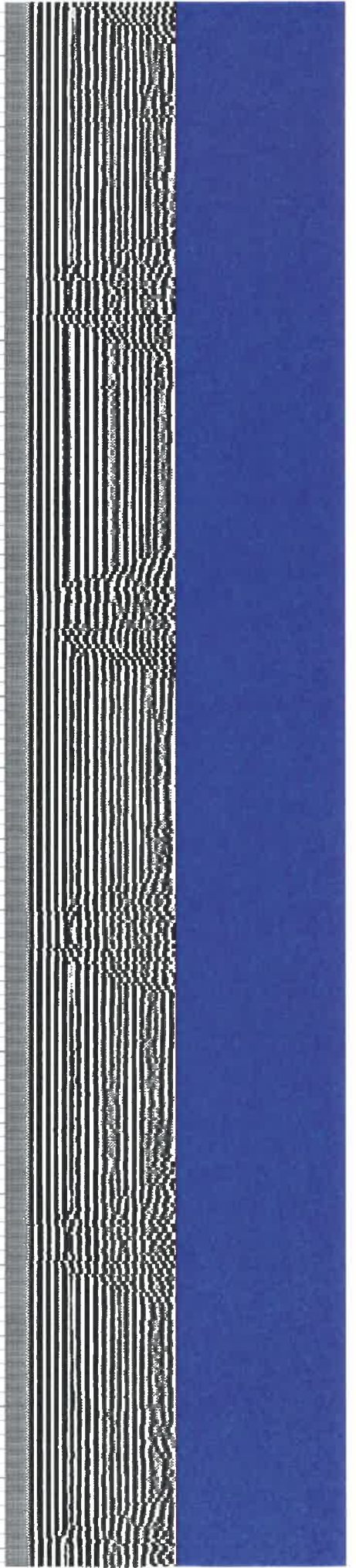
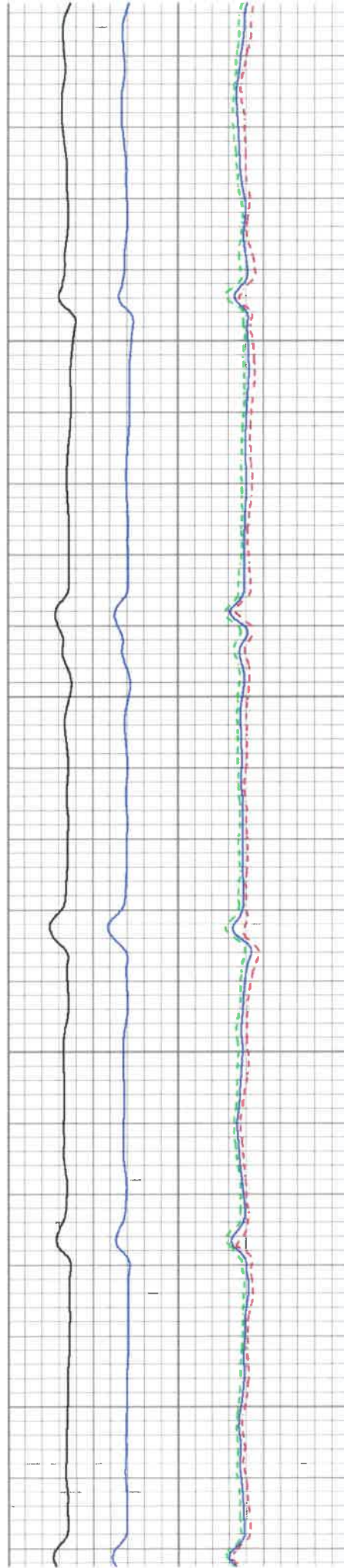


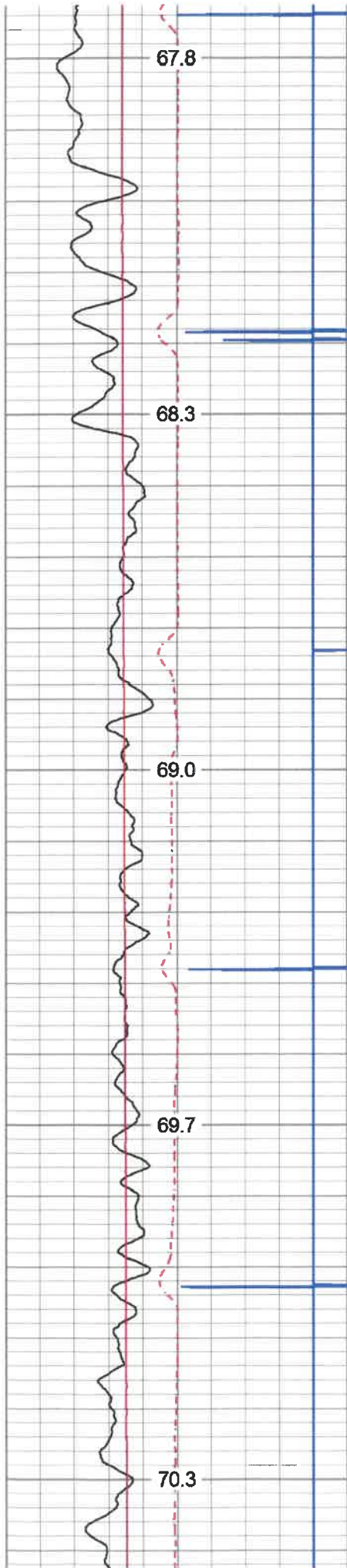
1550

1600

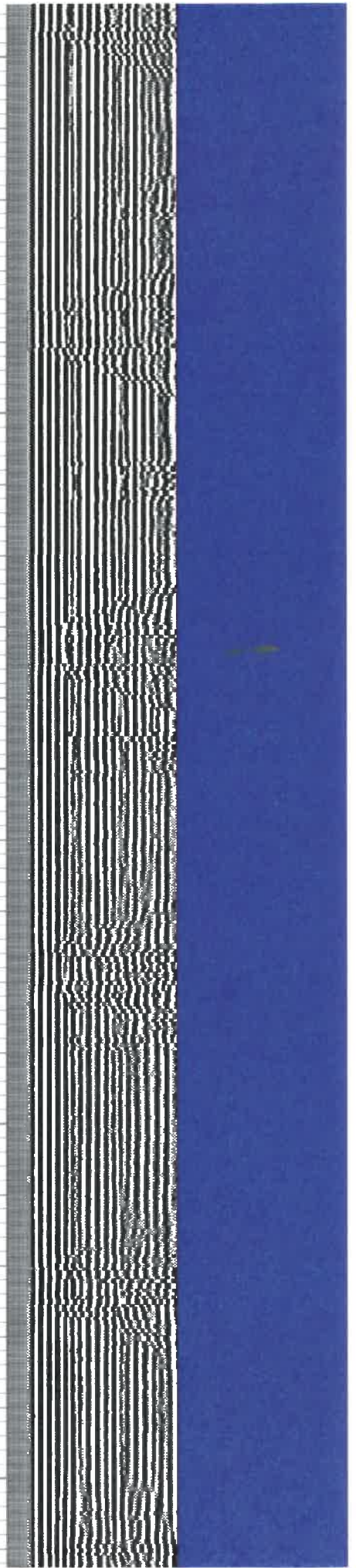
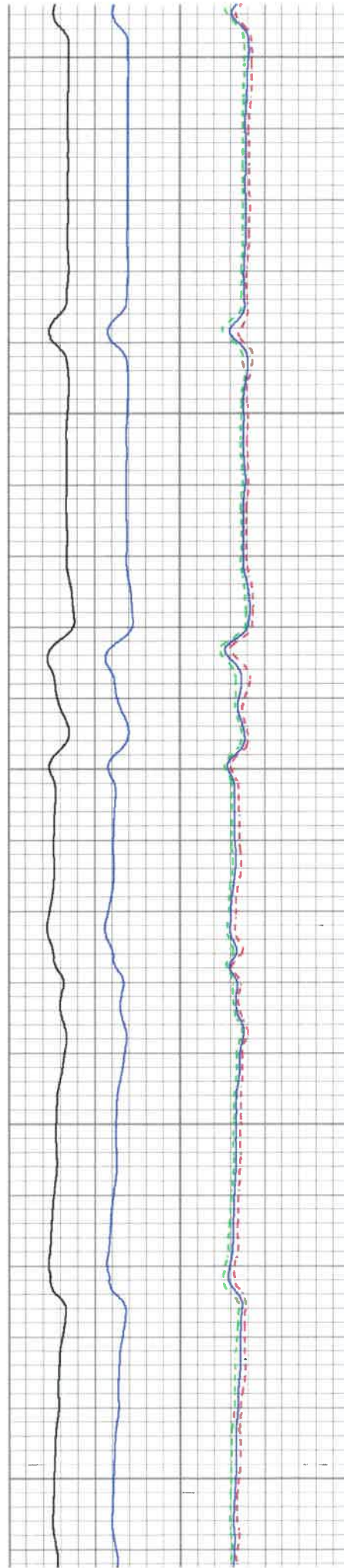
1650

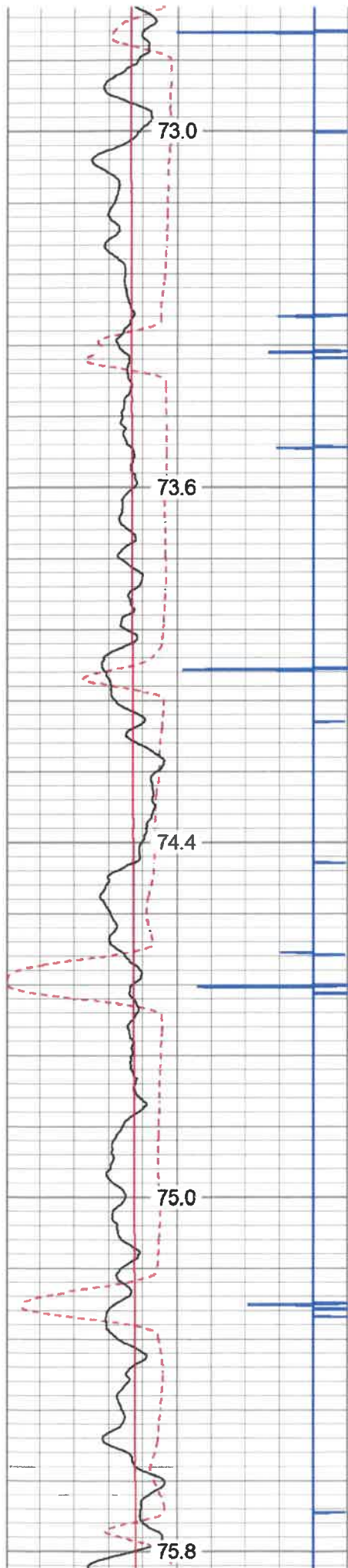
1700





1950
2000
2050
2100
2150





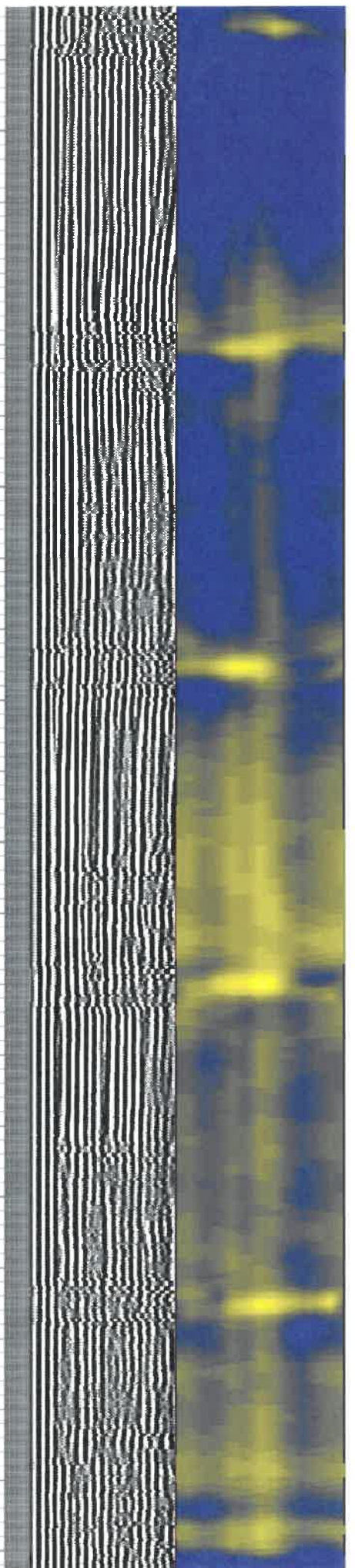
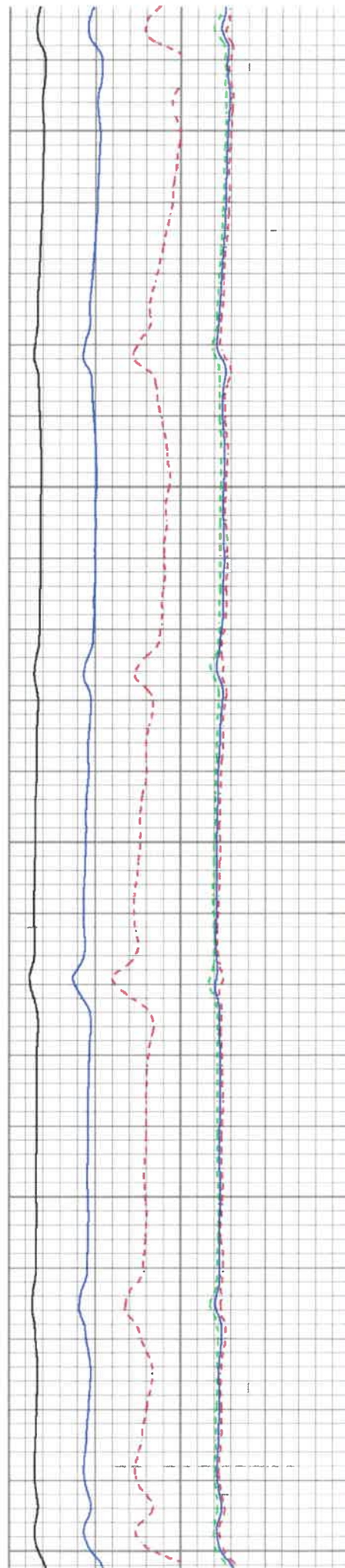
2400

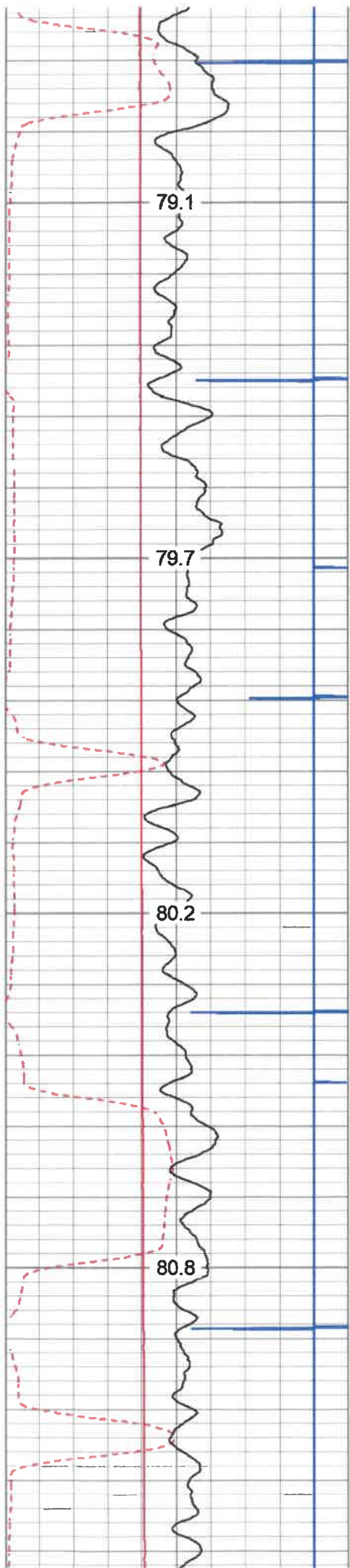
2450

2500

2550

2600



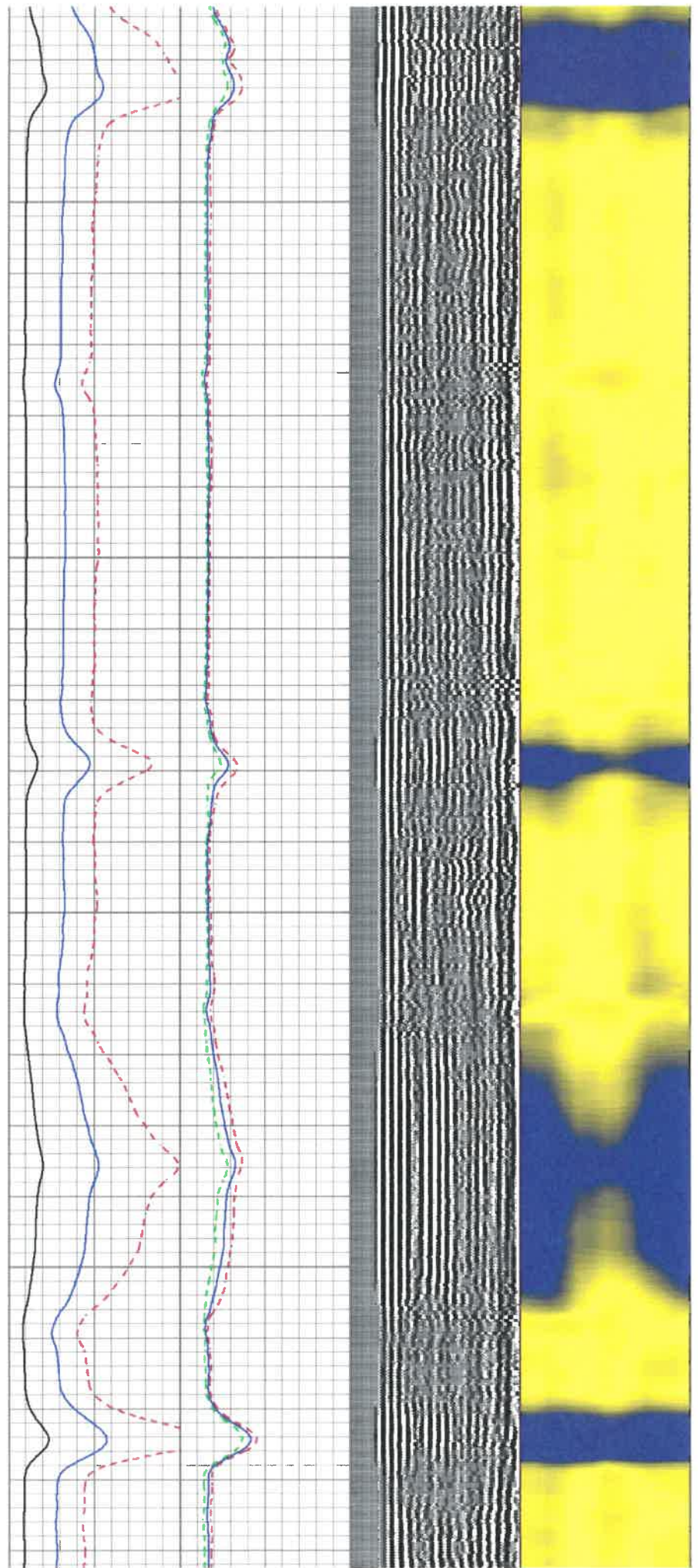


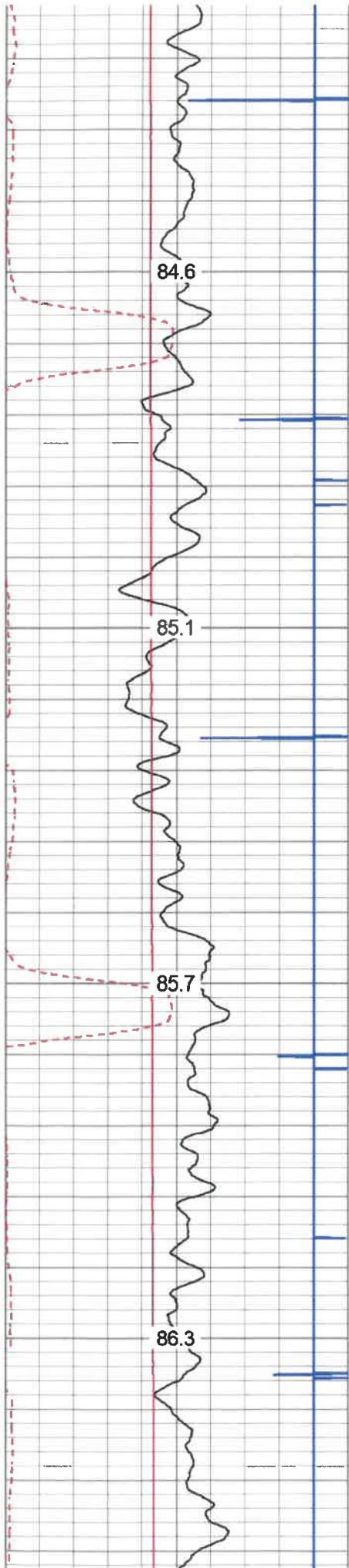
2850

2900

2950

3000



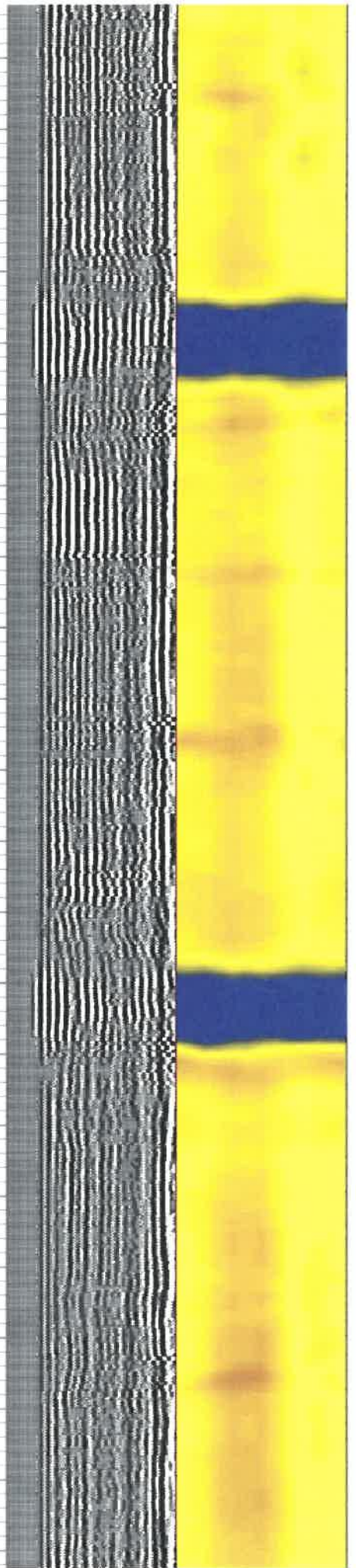
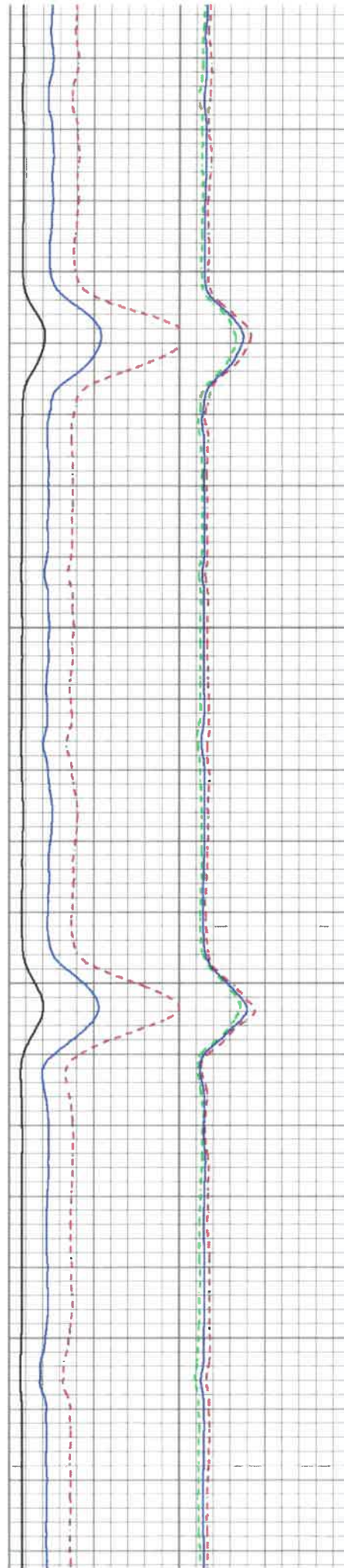


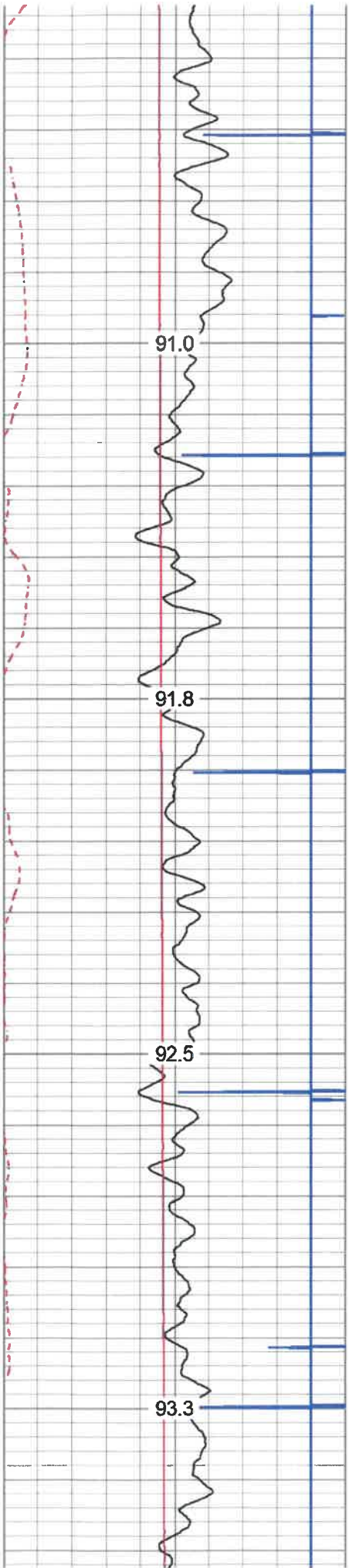
3300

3350

3400

3450



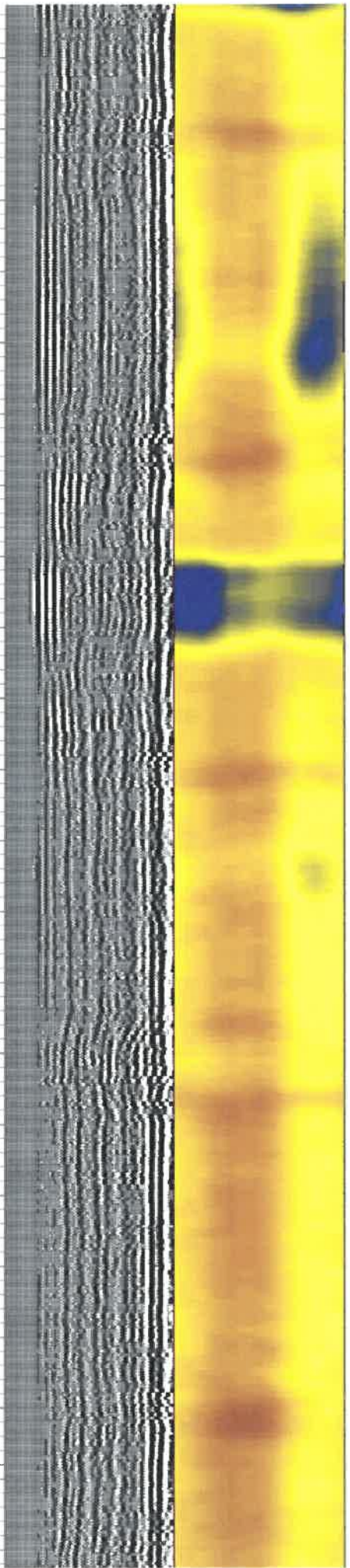
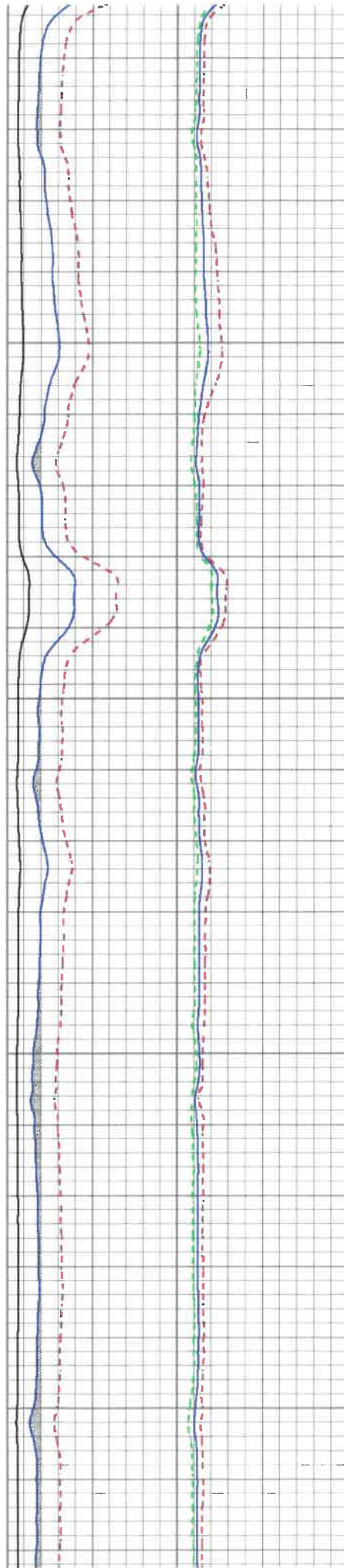


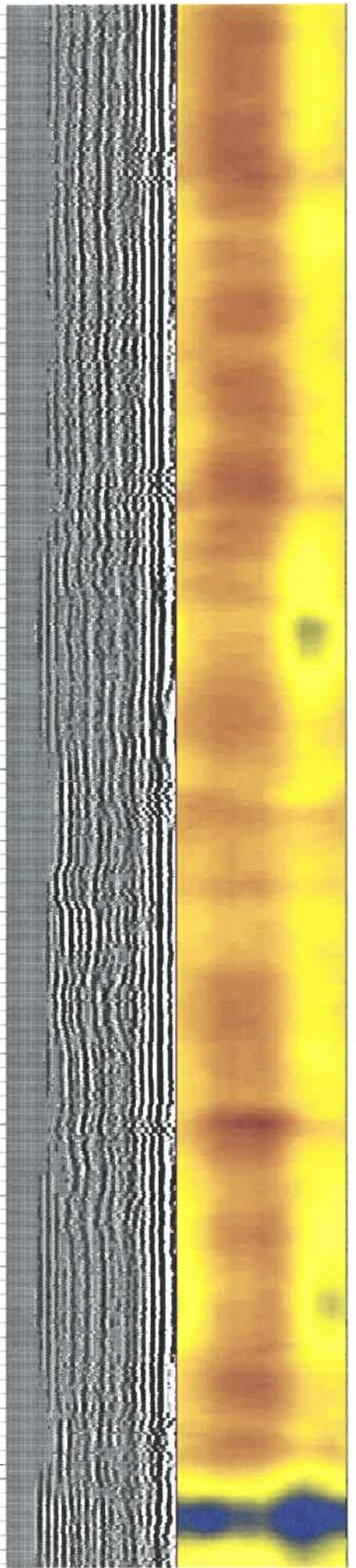
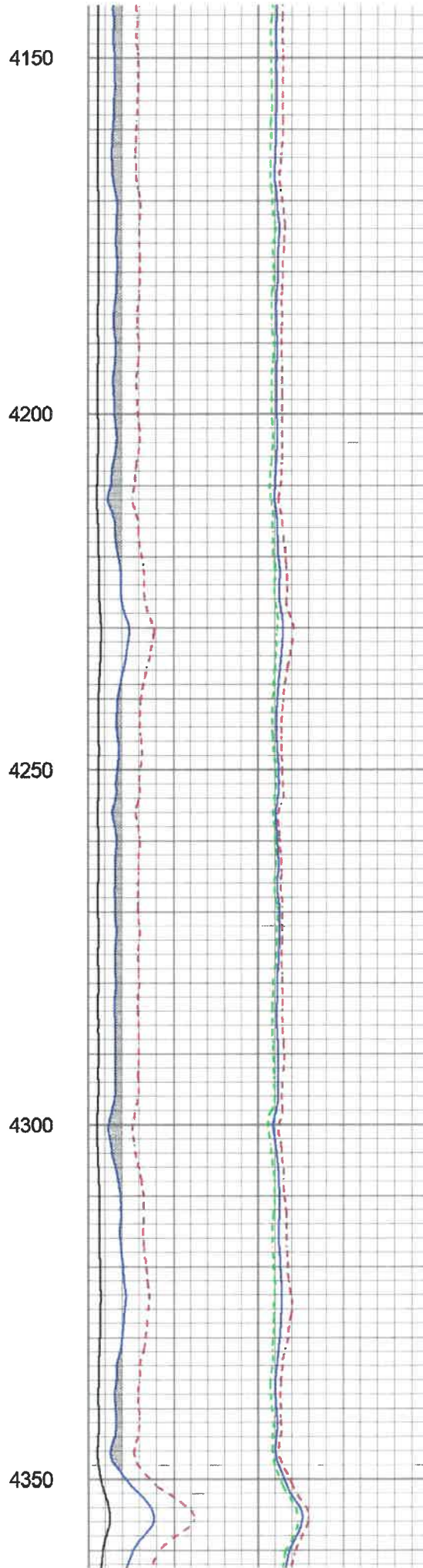
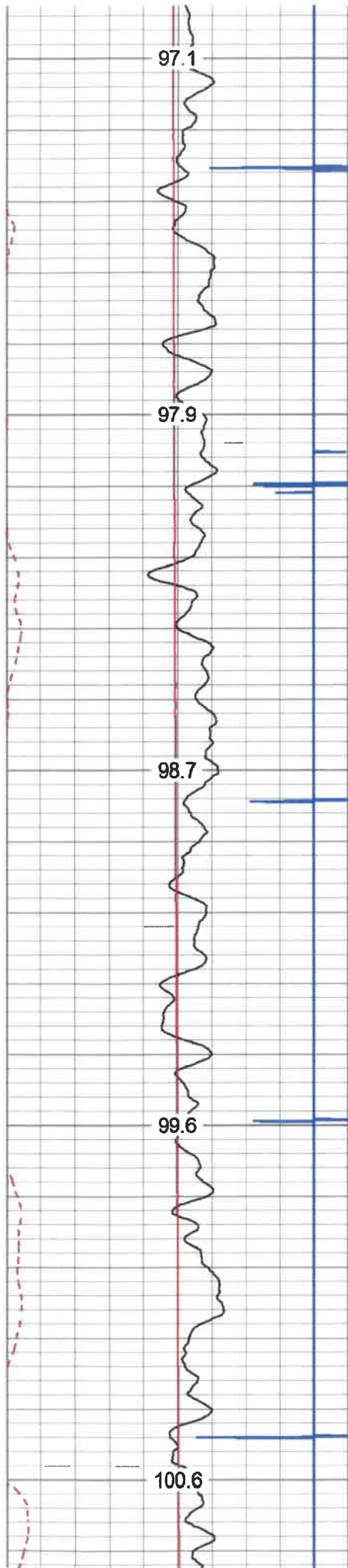
3750

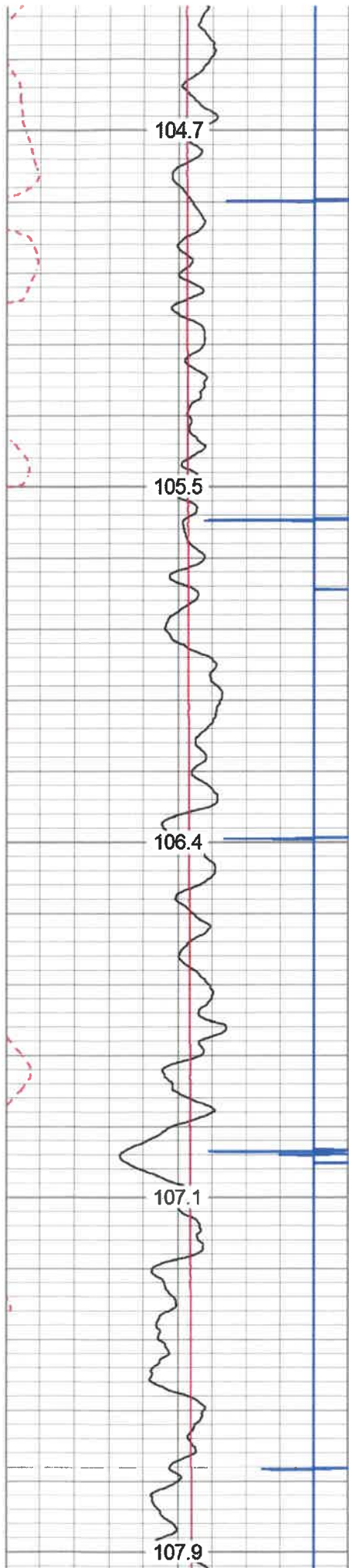
3800

3850

3900







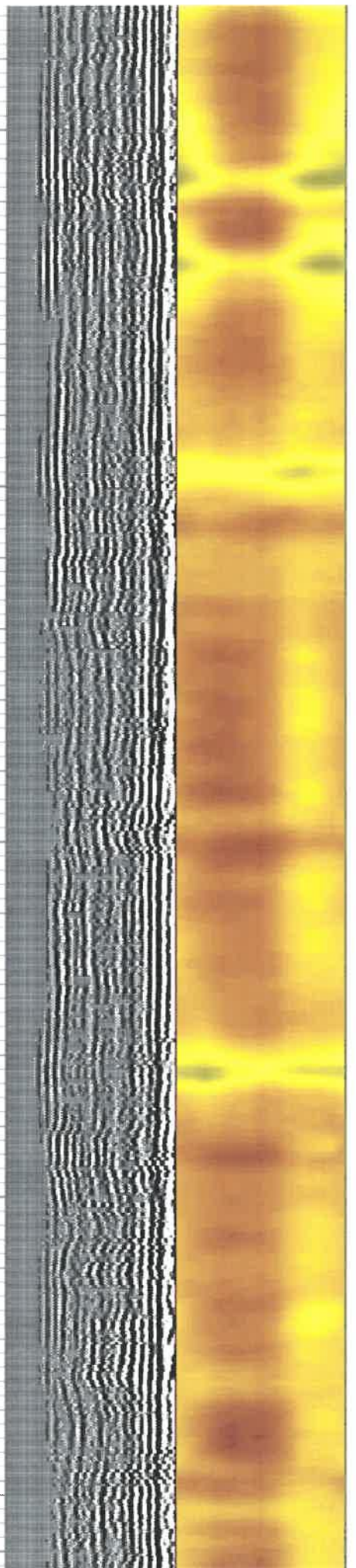
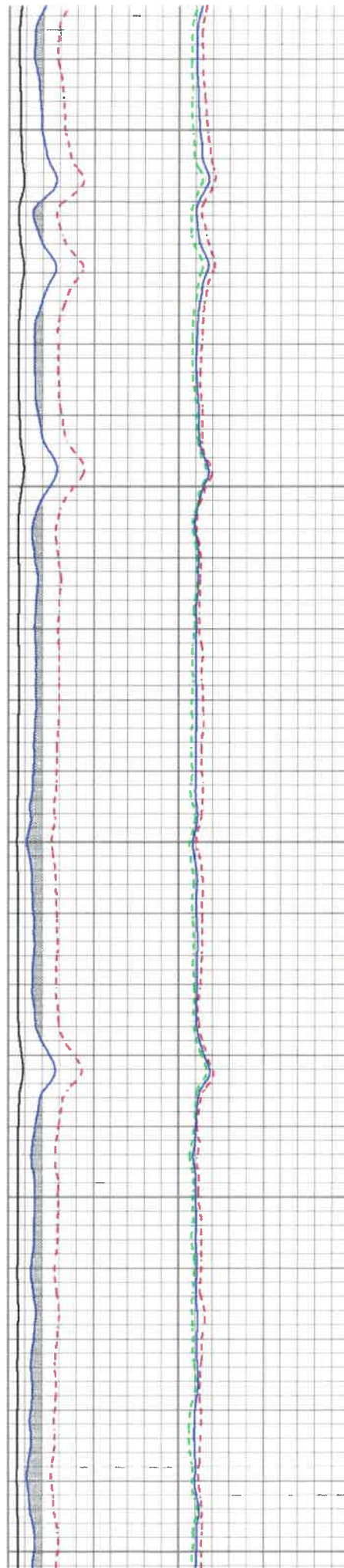
4600

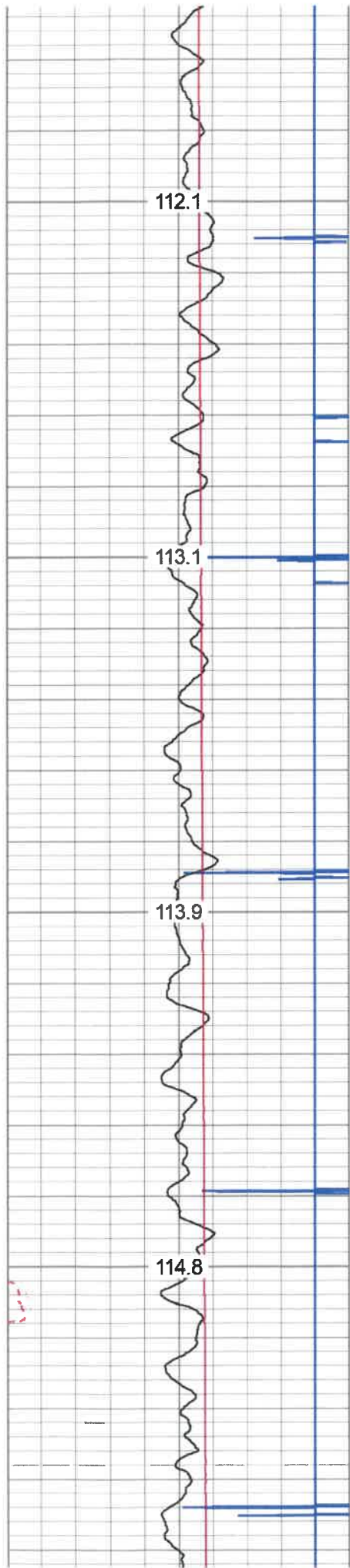
4650

4700

4750

4800



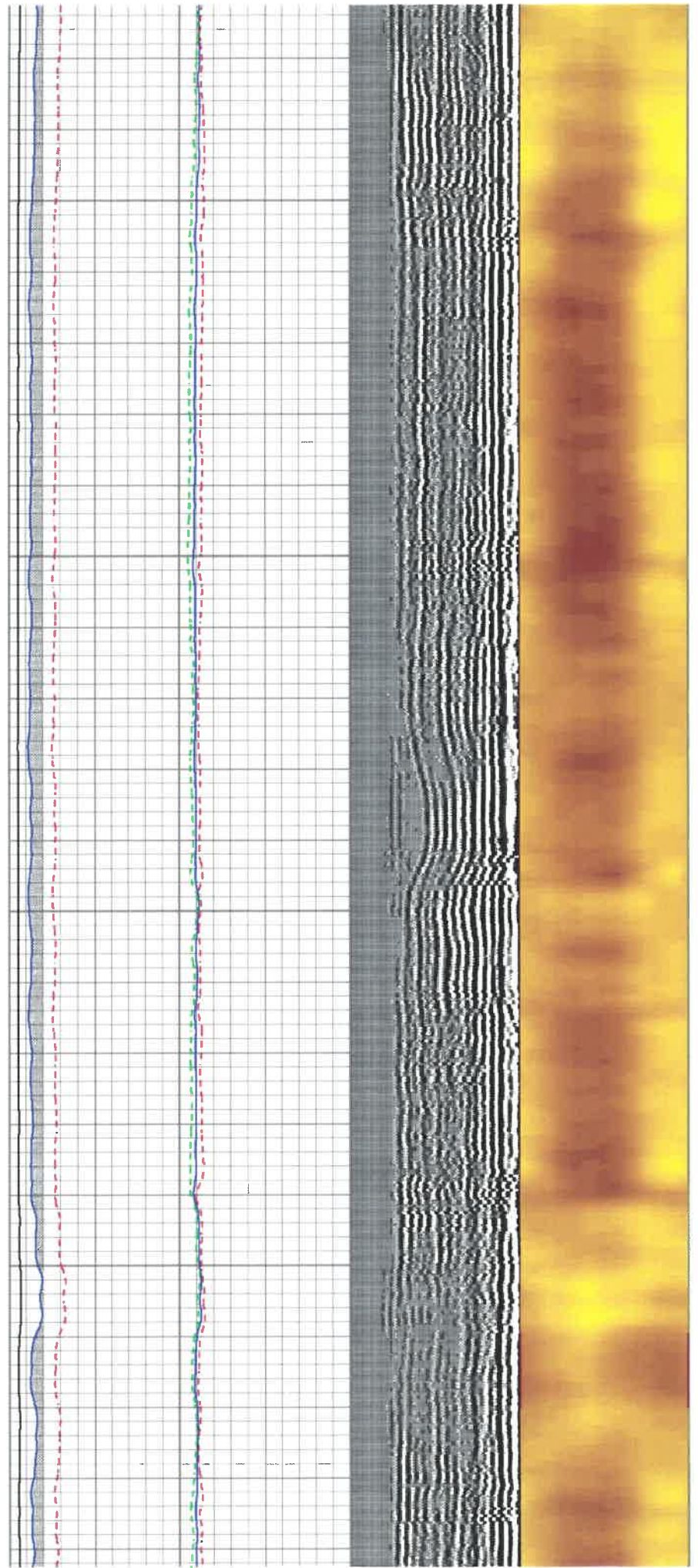


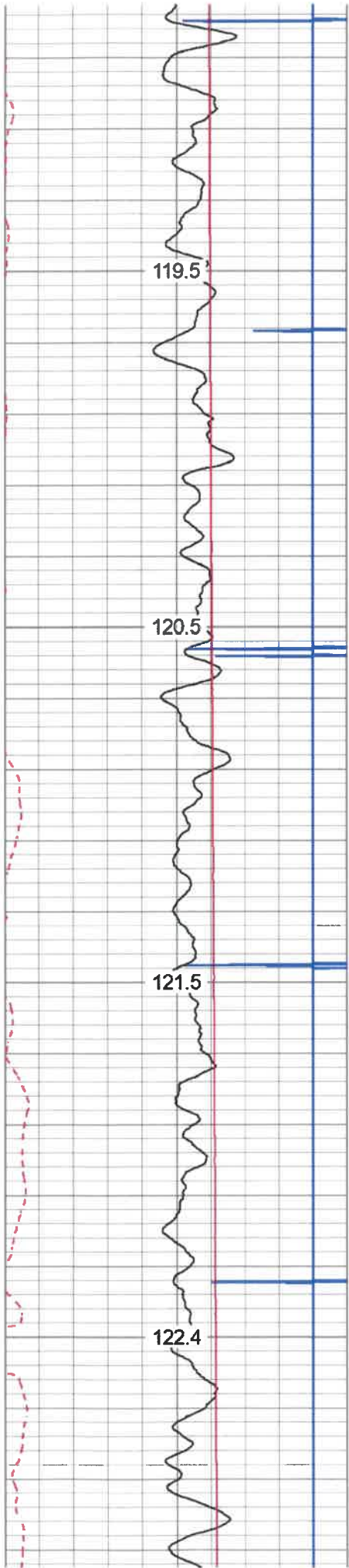
5050

5100

5150

5200



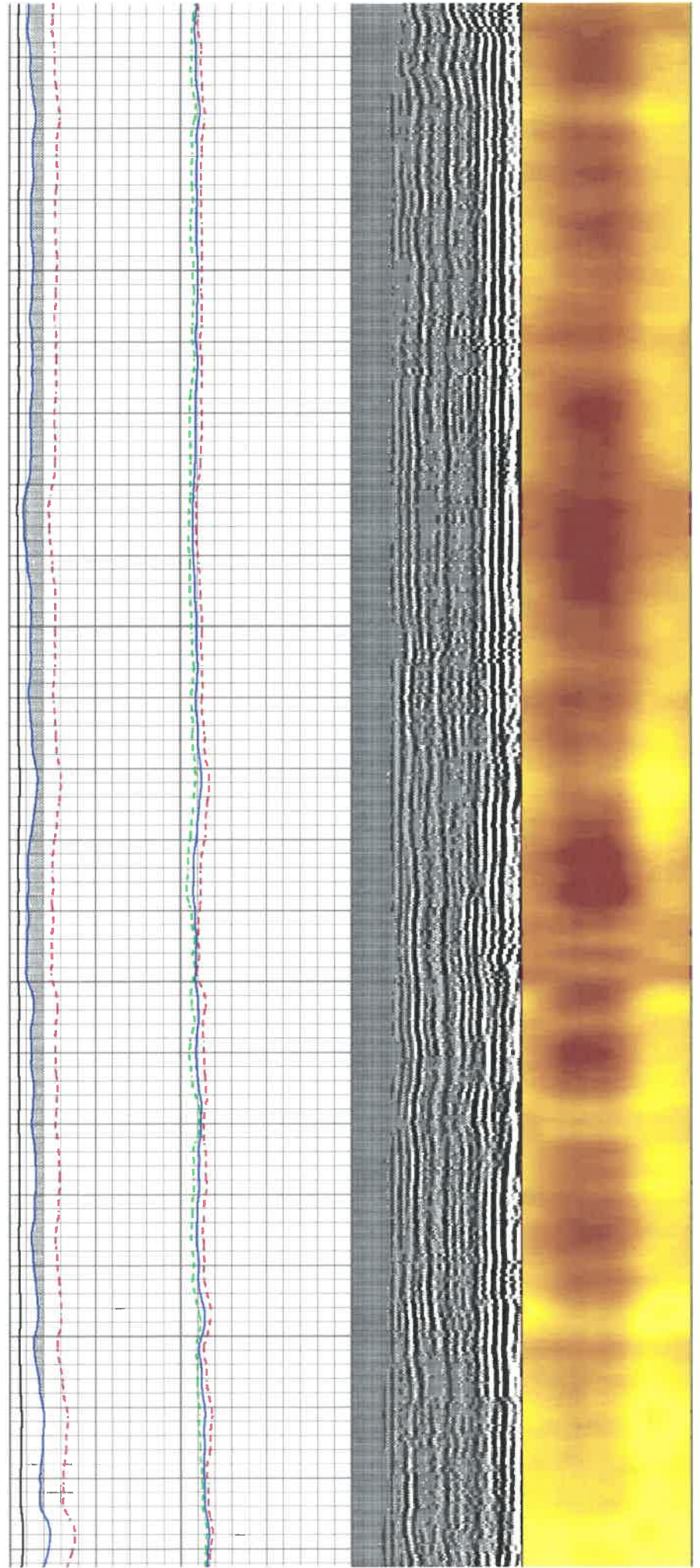


5500

5550

5600

5650



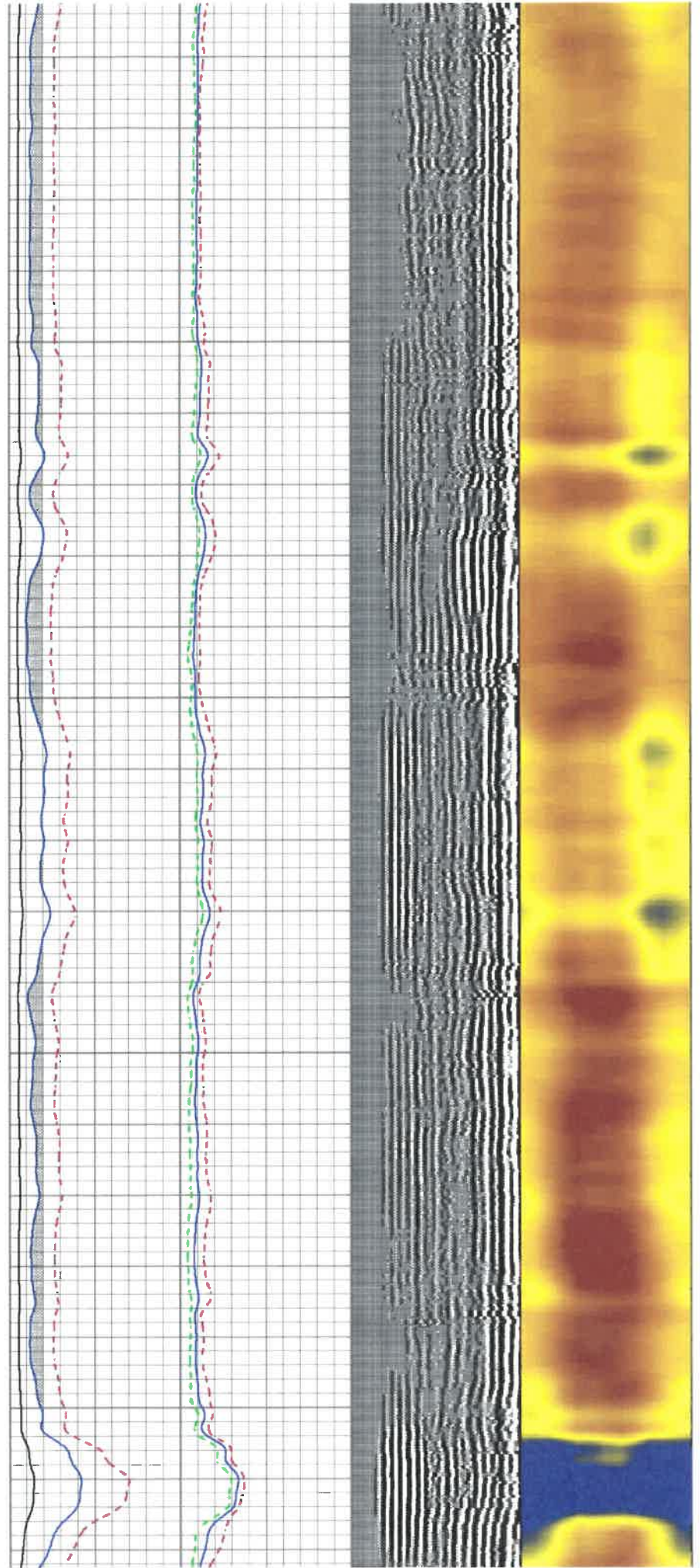


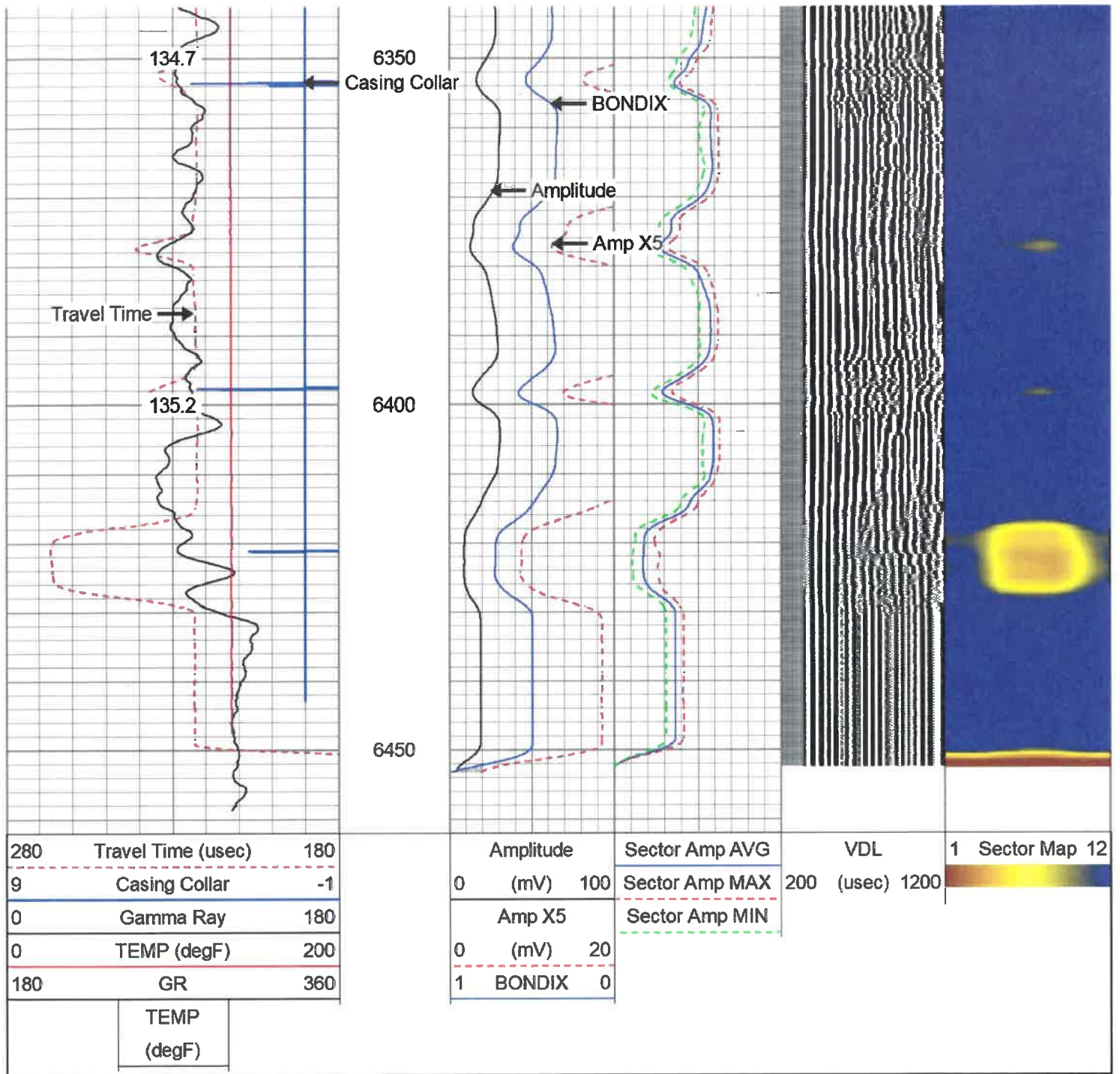
5950

6000

6050

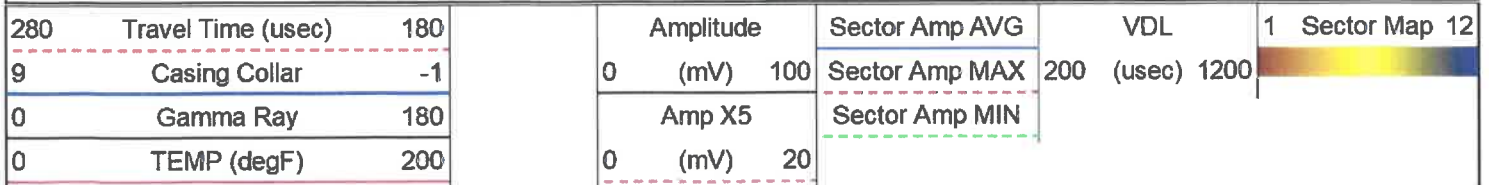
6100





Repeat Pass

Database File antero_weese_2h.db
 Dataset Pathname pass1
 Presentation Format antero
 Dataset Creation Thu Nov 14 08:33:31 2019
 Charted by Depth in Feet scaled 1:240



280	Travel Time (usec)	180	Amplitude	Sector Amp AVG	VDL	1	Sector Map 12
9	Casing Collar	-1	0 (mV)	Sector Amp MAX	200 (usec)	1200	
0	Gamma Ray	180	Amp X5	Sector Amp MIN			
0	TEMP (degF)	200	0 (mV)	20			
180	GR	360	1 BONDIX	0			
	TEMP (degF)						

Log Variables

DatabaseC:\ProgramData\Warrior\Data\antero_weese_2h.db
Dataset field/well/run1/pass1/_vars_

Top - Bottom

BHTEMP_Src	BOREID in	BOTTEMP degF	CASEOD in	CASETHCK in	CASEWGHT lb/ft	MAXAMPL mV	MINAMPL mV
TEMP	8.25	100	5.5	0	23	71.9	3.5
MINATTN db/ft	PERFS	PPT usec	SRFTEMP degF	TDEPTH ft			
0.8	No	219	0	0			

Variable Description

BHTEMP_Src : BHTEMP Input Source Selector
BOREID : Borehole I.D.
BOTTEMP : Bottom Hole Temperature
CASEOD : Casing O.D.
CASETHCK : Casing Thickness
CASEWGHT : Casing Weight
MAXAMPL : Maximum Amplitude

MINAMPL : Minimum Amplitude
MINATTN : Minimum Attenuation
PERFS : Perforation Flag
PPT : Predicted Pipe Time
SRFTEMP : Surface Temperature
TDEPTH : Total Depth

Calibration Report

Database File antero_weese_2h.db
Dataset Pathname pass1
Dataset Creation Thu Nov 14 08:33:31 2019

Gamma Ray Calibration Report

Serial Number: IPSNO-03
Tool Model: Tek-Co 2 3/4
Performed: Tue Nov 12 16:11:18 2019

Calibrator Value: 1.0

Background Reading: 0.0 cps
Calibrator Reading: 1.0 cps

Sensitivity: 0.5000 /cps

Segmented Cement Bond Log Calibration Report

Serial Number: IOL40-05
Tool Model: Tek12

Calibration Casing Diameter: 5.500 in
Calibration Depth: 66.642 ft

Master Calibration. performed Wed Nov 13 17:17:35 2019:

WVFS10	11.40					
WVFS9	11.48					
WVFS8	11.48					
WVFS7	11.48					
WVFS6	11.48					
WVFS5	11.48					
WVFS4	11.48					
WVFS3	11.48					
WVFS2	11.48					
WVFS1	11.48					
WVFCAL	10.73					
WVF3FT	10.73					
WVF5FT	9.73					
WVFSYNC	6.40					
WVFTEMP	6.40					
			Tek-2.75 2 3/4" Tekco Adjustable Centralizer	2.73	2.75	25.00
			GR-Tek-Co 2 3/4 (IPSNO-03) Tekco 2 3/4" 400 Deg. F Logging Gamma Ray	3.67	2.75	40.00
GR	1.04					
Dataset:		antero_weese_2h.db: field/well/run1/pass1				
Total length:		20.07 ft				
Total weight:		250.00 lb				
O.D.:		3.25 in				

	Company	Antero Resources Corporation		
	Well	Weese Unit 2H		
	Field	Marcellus		
	County	Tyler		
	State	WV	Country	US