

**RADIAL BOND LOG  
GAMMA RAY  
VDL,CCL**

Company ANTERO RESOURCES CORPORATION  
 Well WICK 1H  
 Field MARCELLUS  
 County TYLER  
 State WV

Company ANTERO RESOURCES CORPORATION  
 Well WICK 1H  
 Field MARCELLUS  
 County TYLER  
 State WV

Location: AFE AO8787  
 API #: 47095025930000  
 Other Services

Permanent Datum SEC TWP RGE Elevation  
 Log Measured From GL  
 Drilling Measured From

K.B.  
D.F.  
G.L.

Date	9-5-19	
Run Number	1	
Depth Driller	17072'	
Depth Logger	6649'	
Bottom Logged Interval	6649'	
Top Log Interval	SURFACE	
Open Hole Size	N/A	
Type Fluid	WATER	
Density / Viscosity	N/A	
Max. Recorded Temp.	135 DEG	
Estimated Cement Top	3220'	
Time Well Ready	N/A	
Time Logger on Bottom	8.14	
Equipment Number	624874	
Location	BRIDGEPORT	
Recorded By	P DAVIDSON	
Witnessed By	R RIVERA	

Borehole Record			Casing Record				
Run Number	Bit	From	To	Size	Weight	From	To
				13 3/8	54.5	661'	0
				9 5/8	36	2648'	0
				5 1/2	23	17072'	0

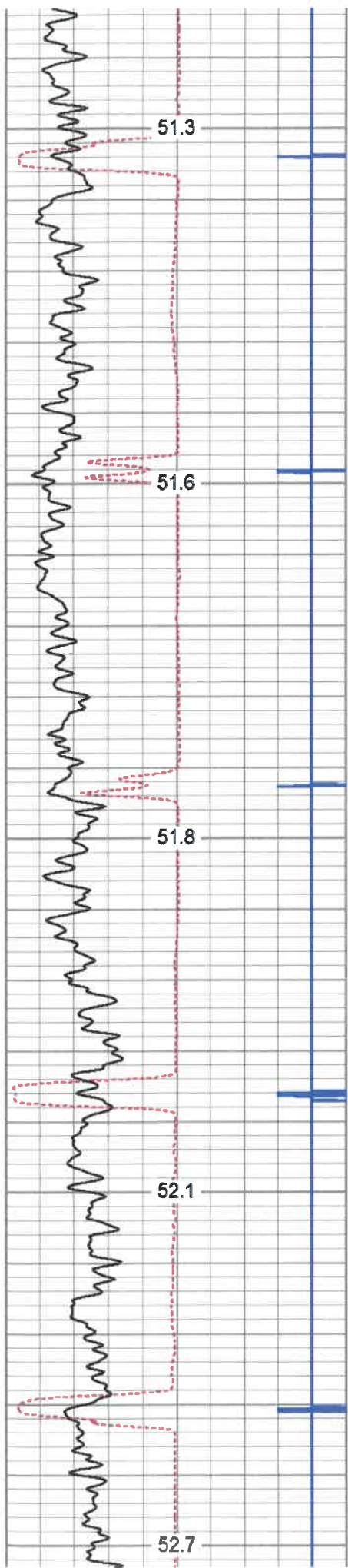
<<< Fold Here >>>

All interpretations are opinions based on inferences from electrical or other measurements and we cannot and do not guarantee the accuracy or correctness of any interpretation, and we shall not, except in the case of gross or willful negligence on our part, be liable or responsible for any loss, costs, damages, or expenses incurred or sustained by anyone resulting from any interpretation made by any of our officers, agents or employees. These interpretations are also subject to our general terms and conditions set out in our current Price Schedule.

Comments

MARKER JOINT @5307'-5323'  
 LOG TD 6649'  
 CEMENT TOP @ 3220'  
 LOG RAN UNDER 1500 PSI

THANK YOU FOR CHOOSING KLX ENERGY



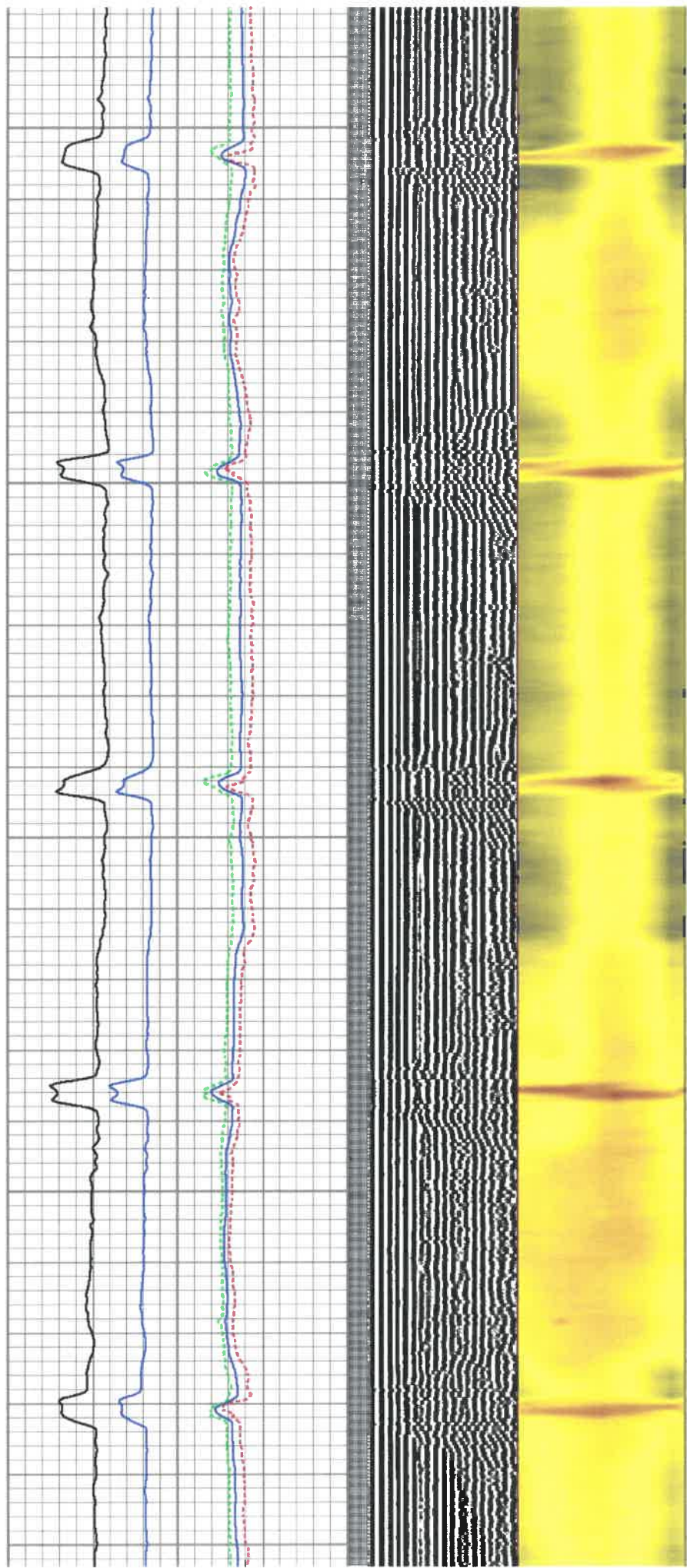
150

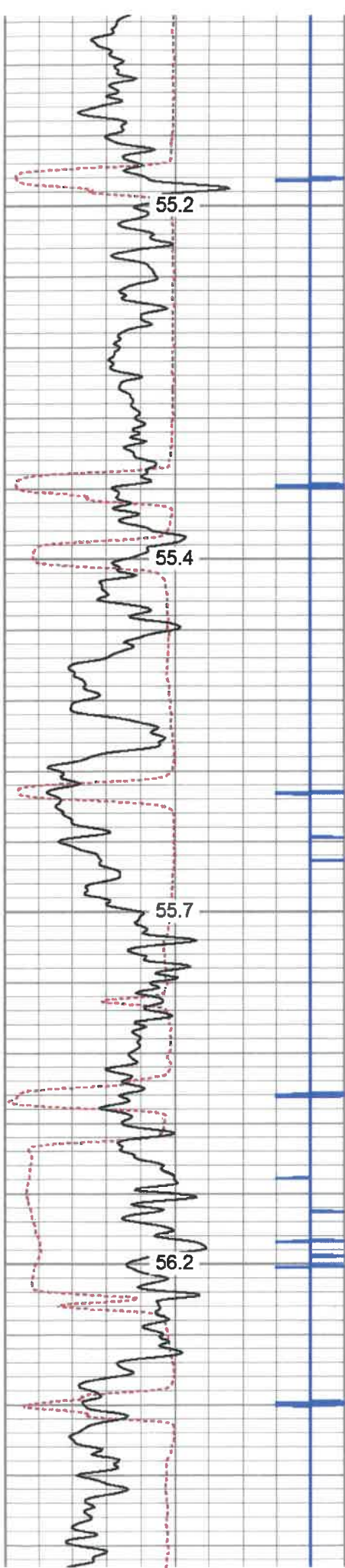
200

250

300

350



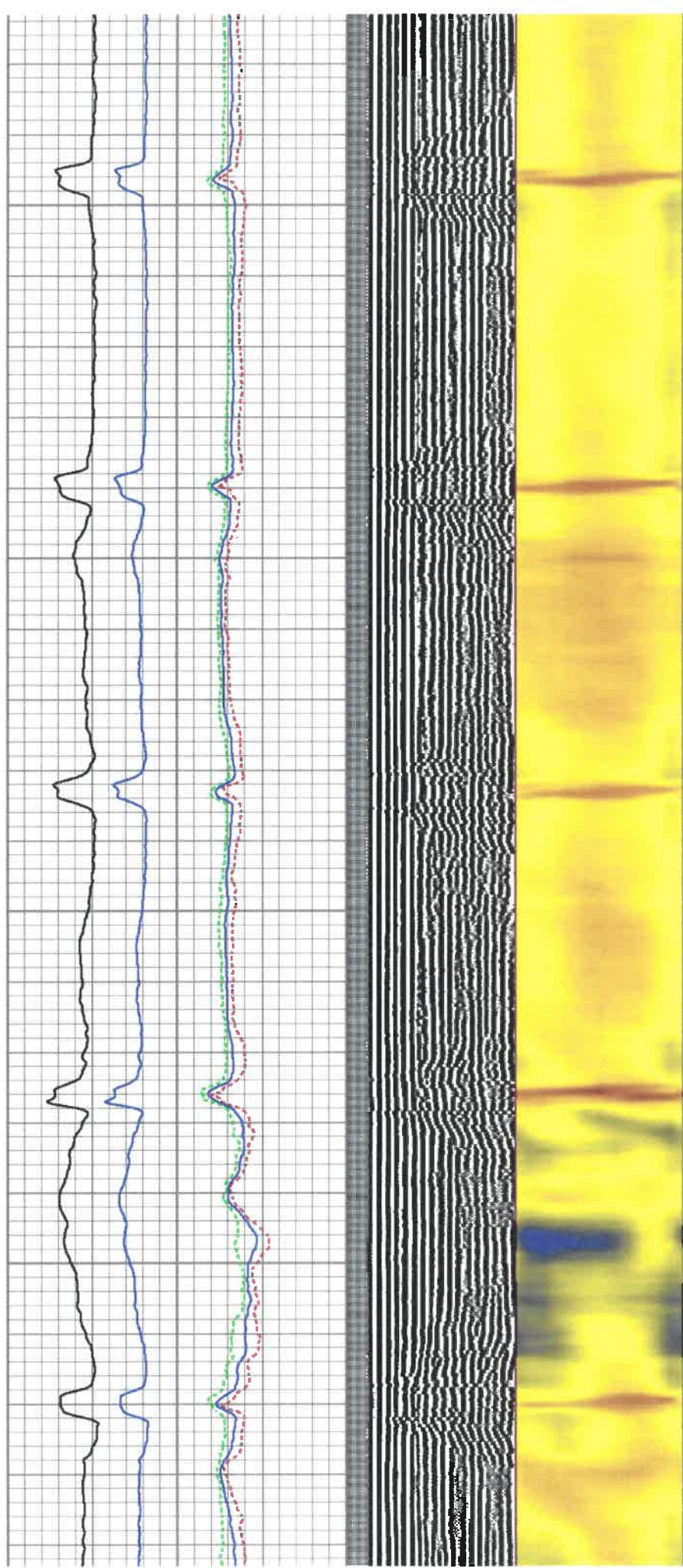


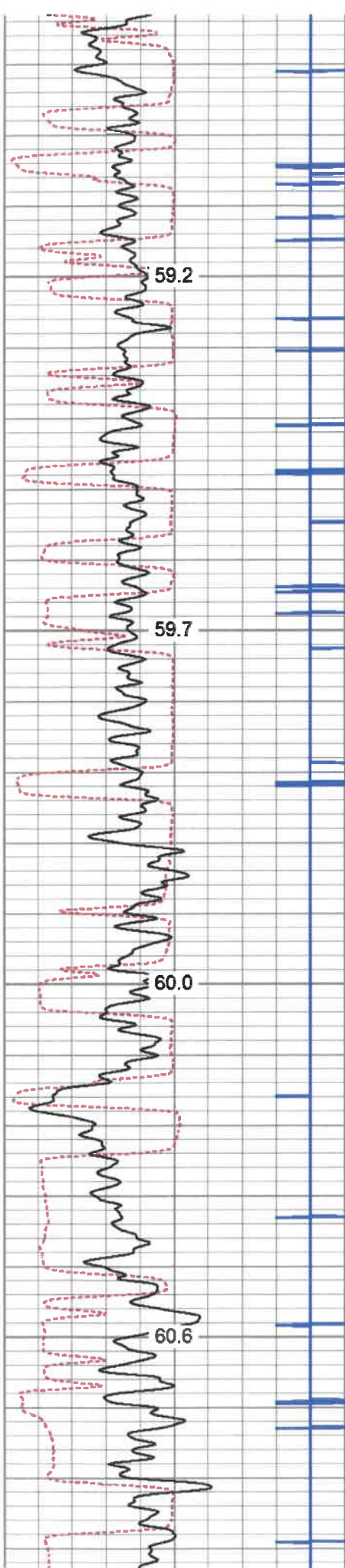
600

650

700

750



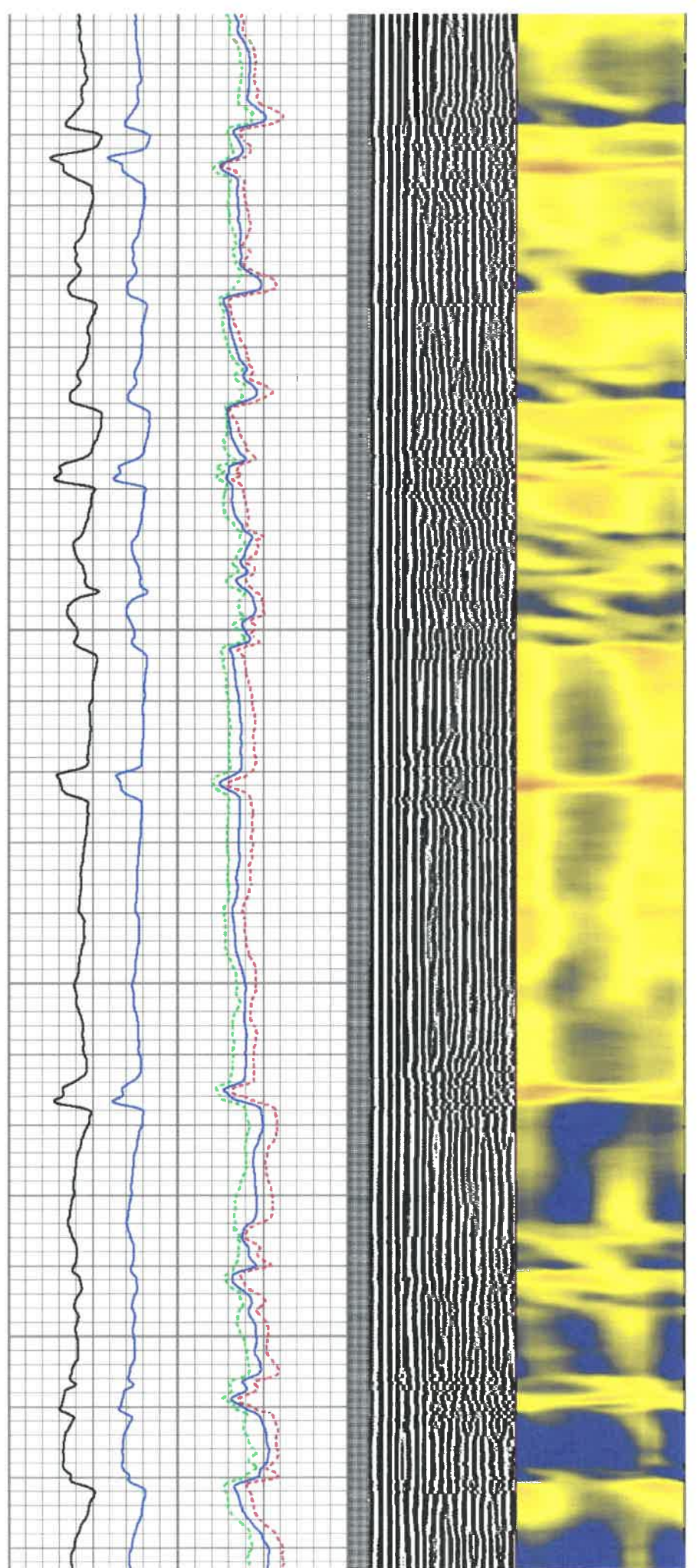


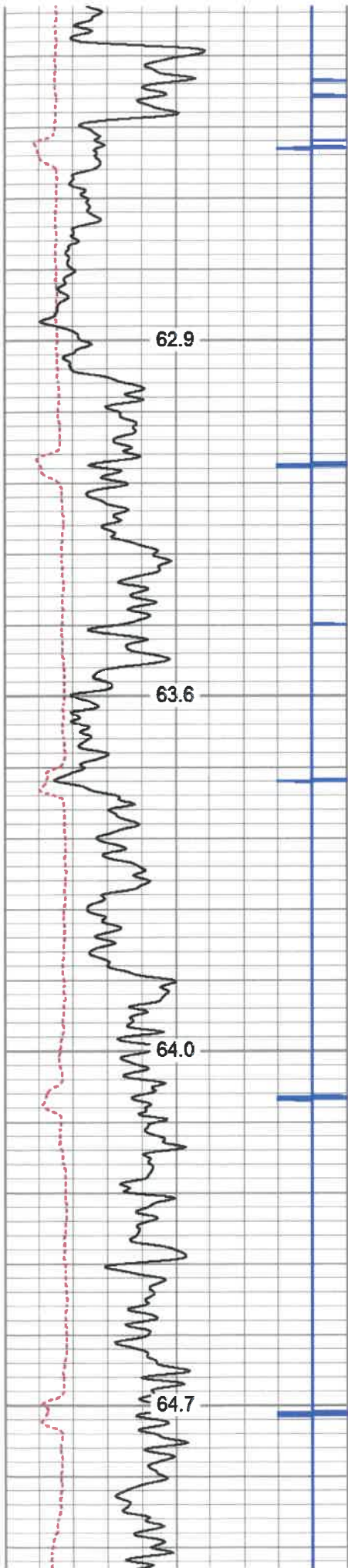
1050

1100

1150

1200



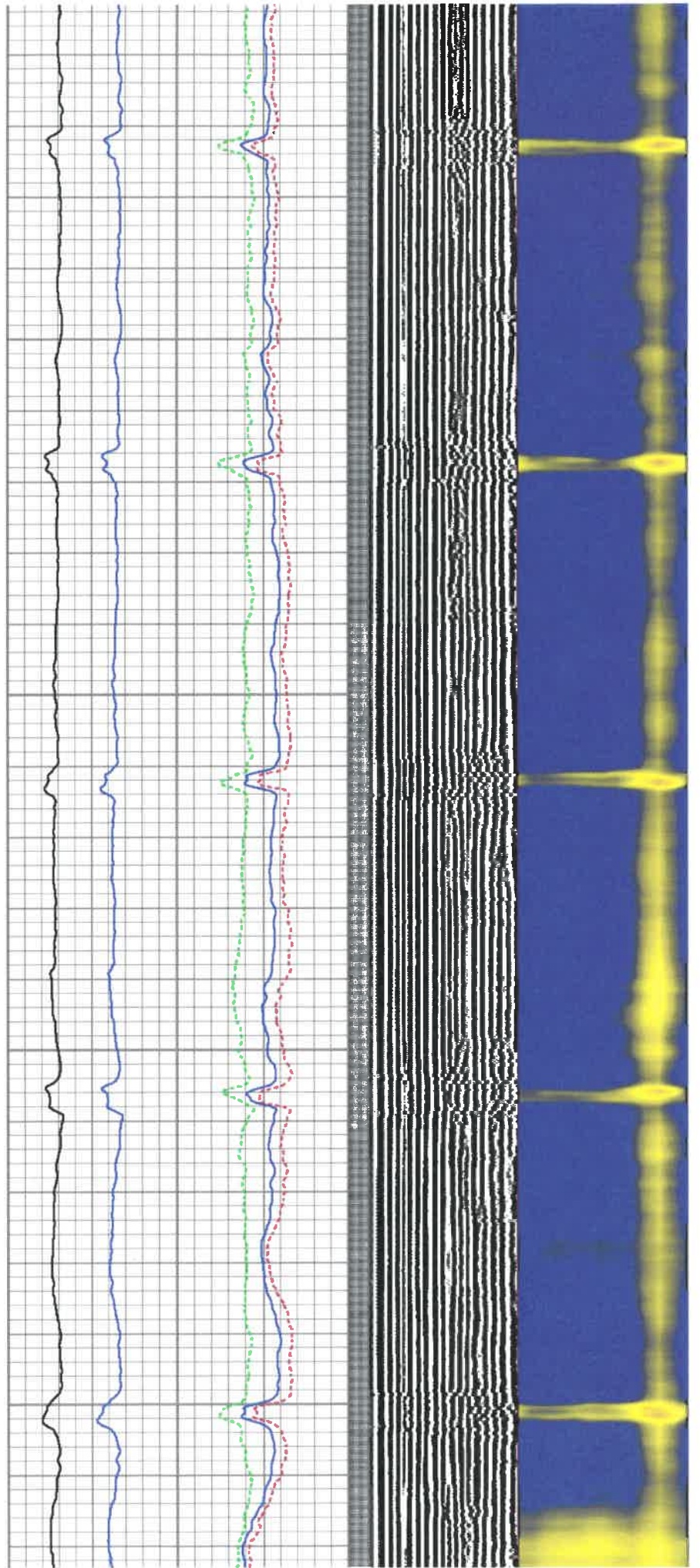


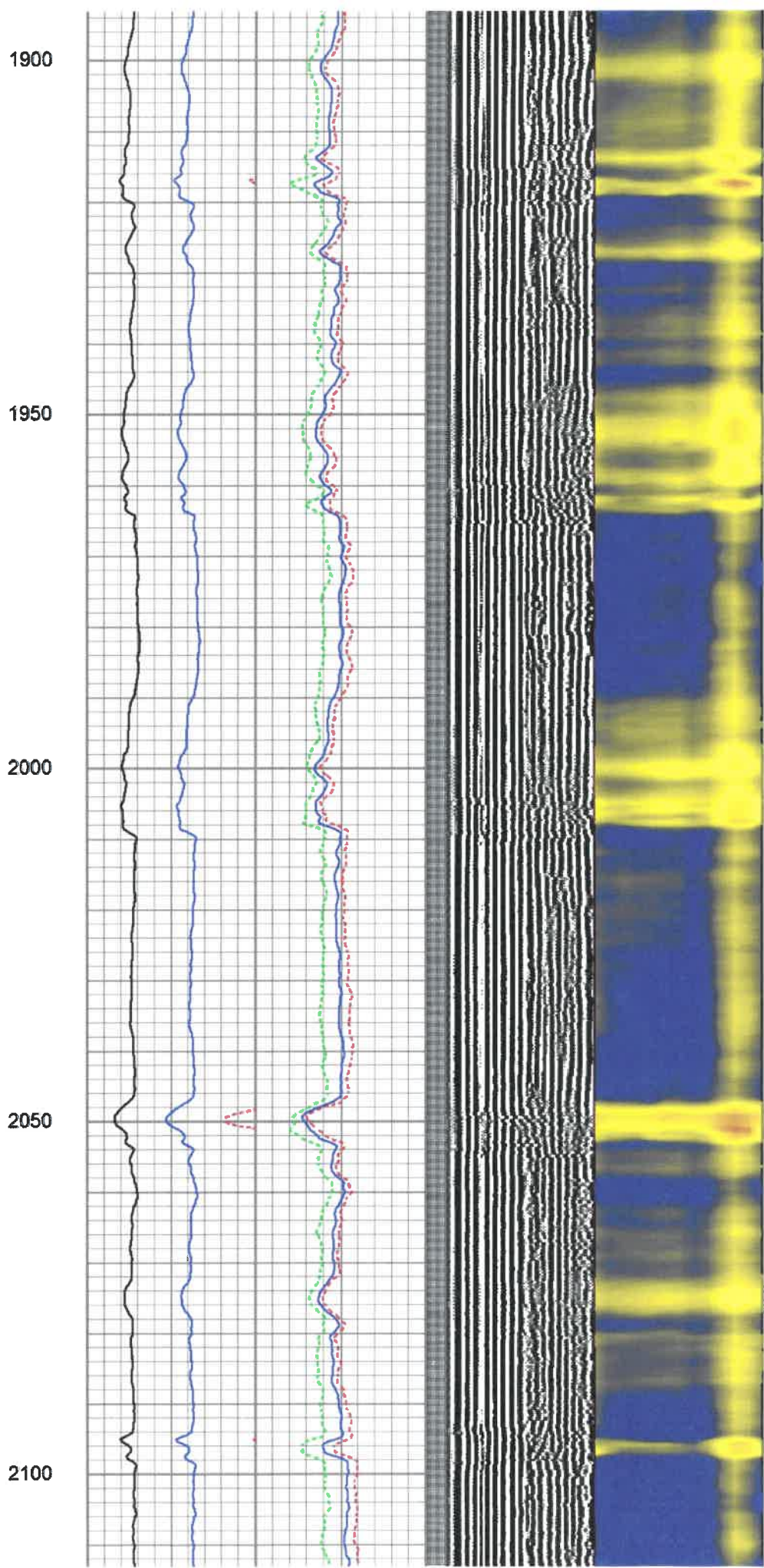
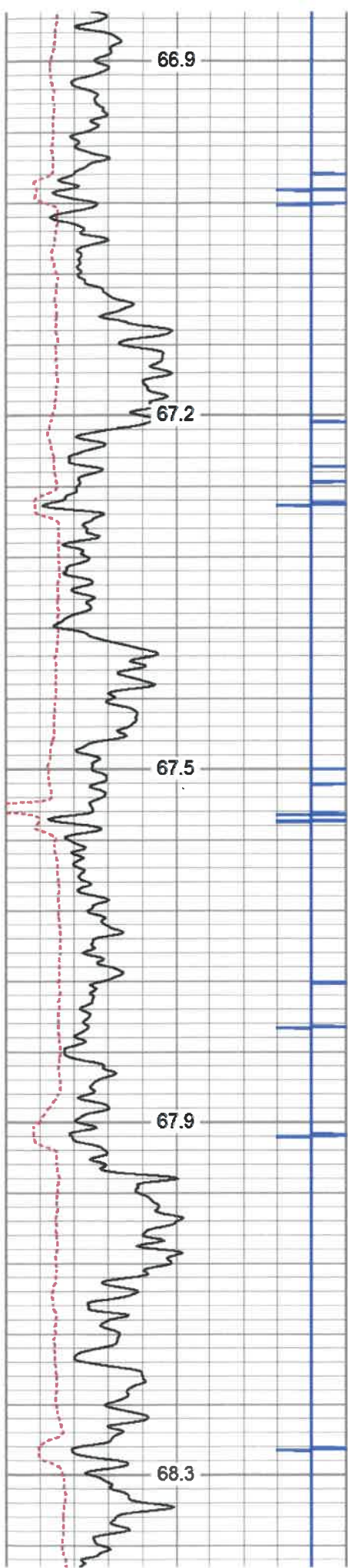
1500

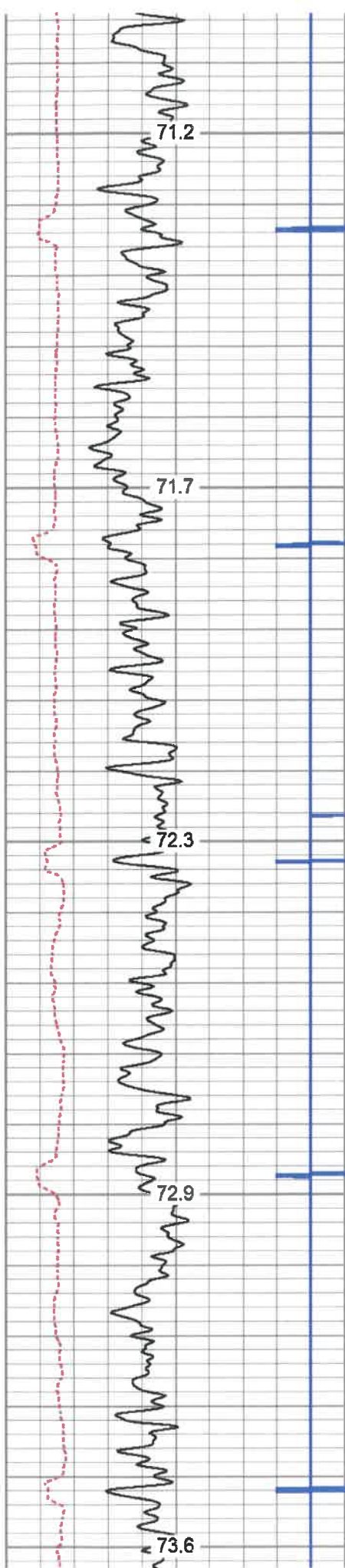
1550

1600

1650







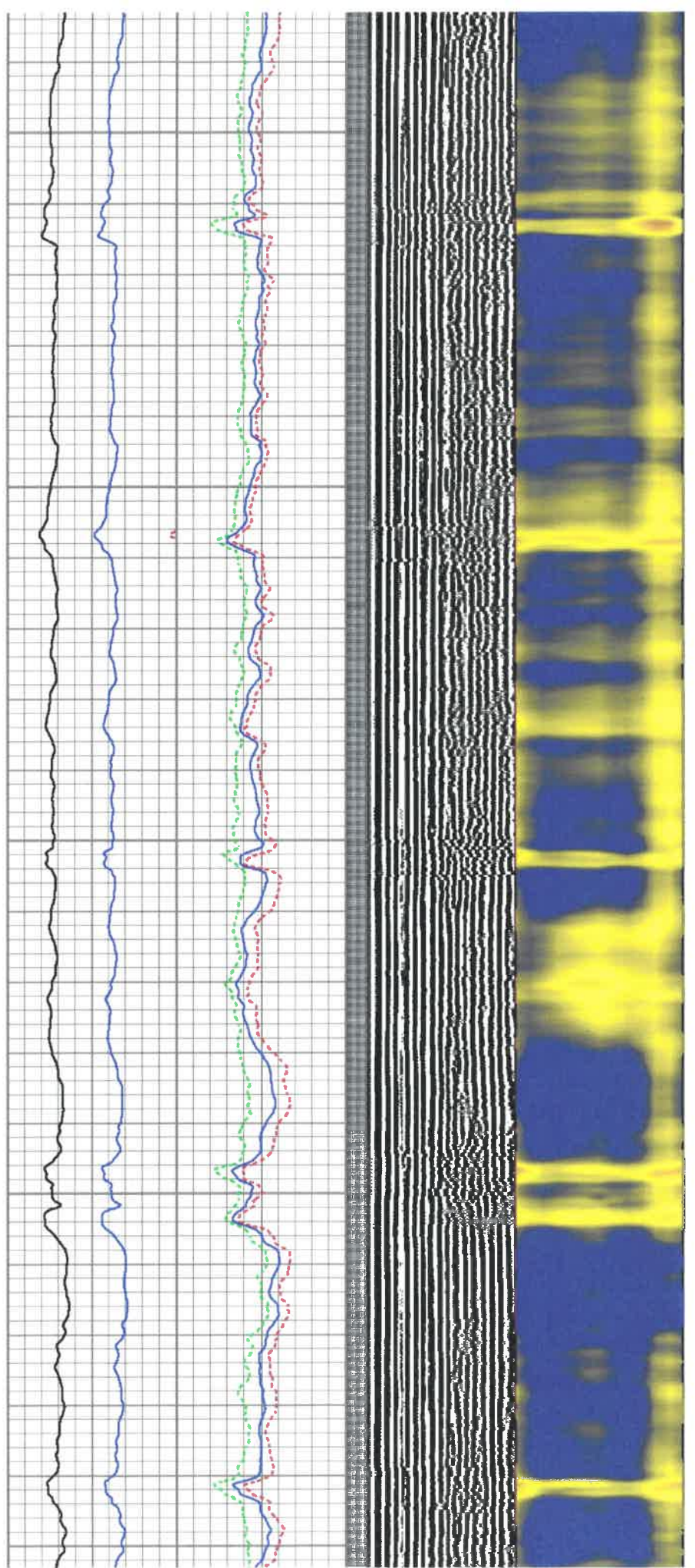
2350

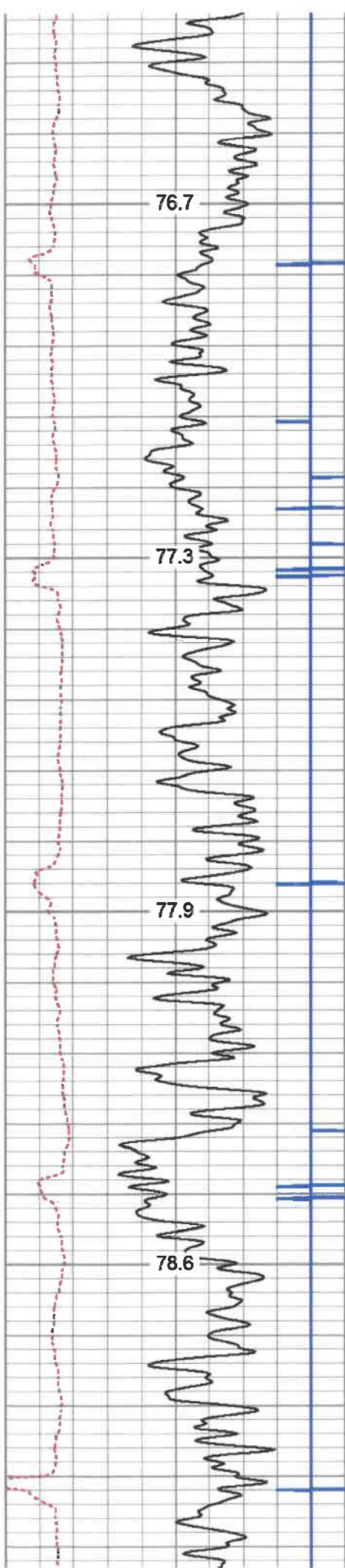
2400

2450

2500

2550



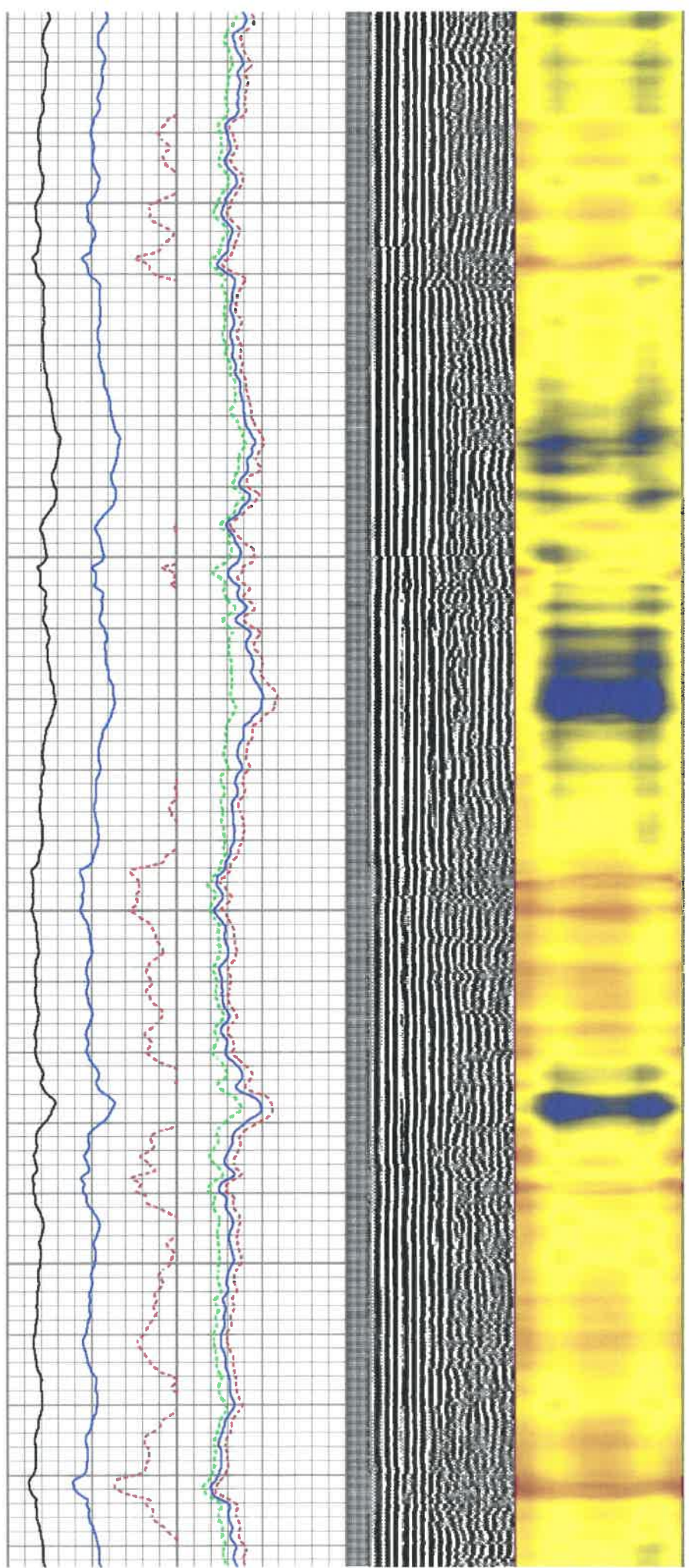


2800

2850

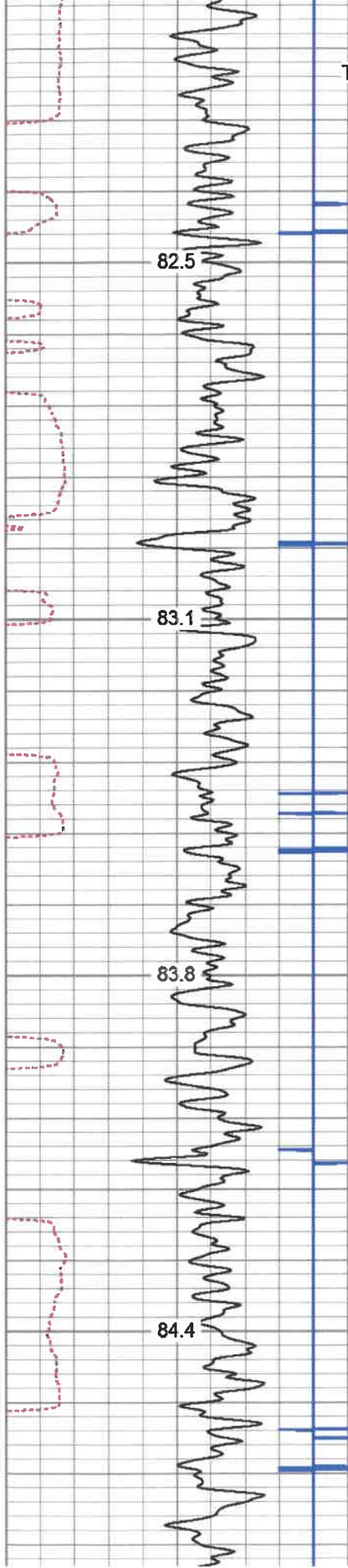
2900

2950





Top of Cement

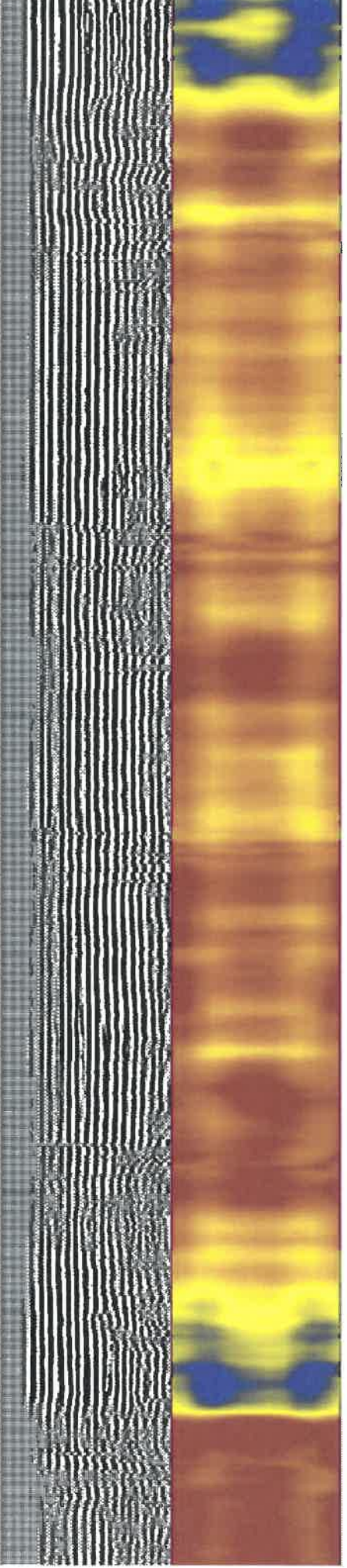
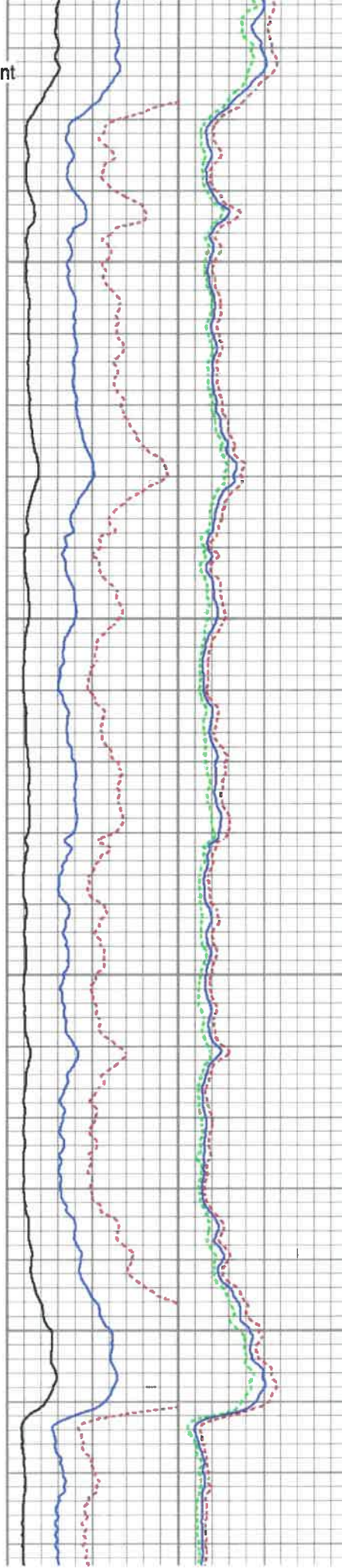


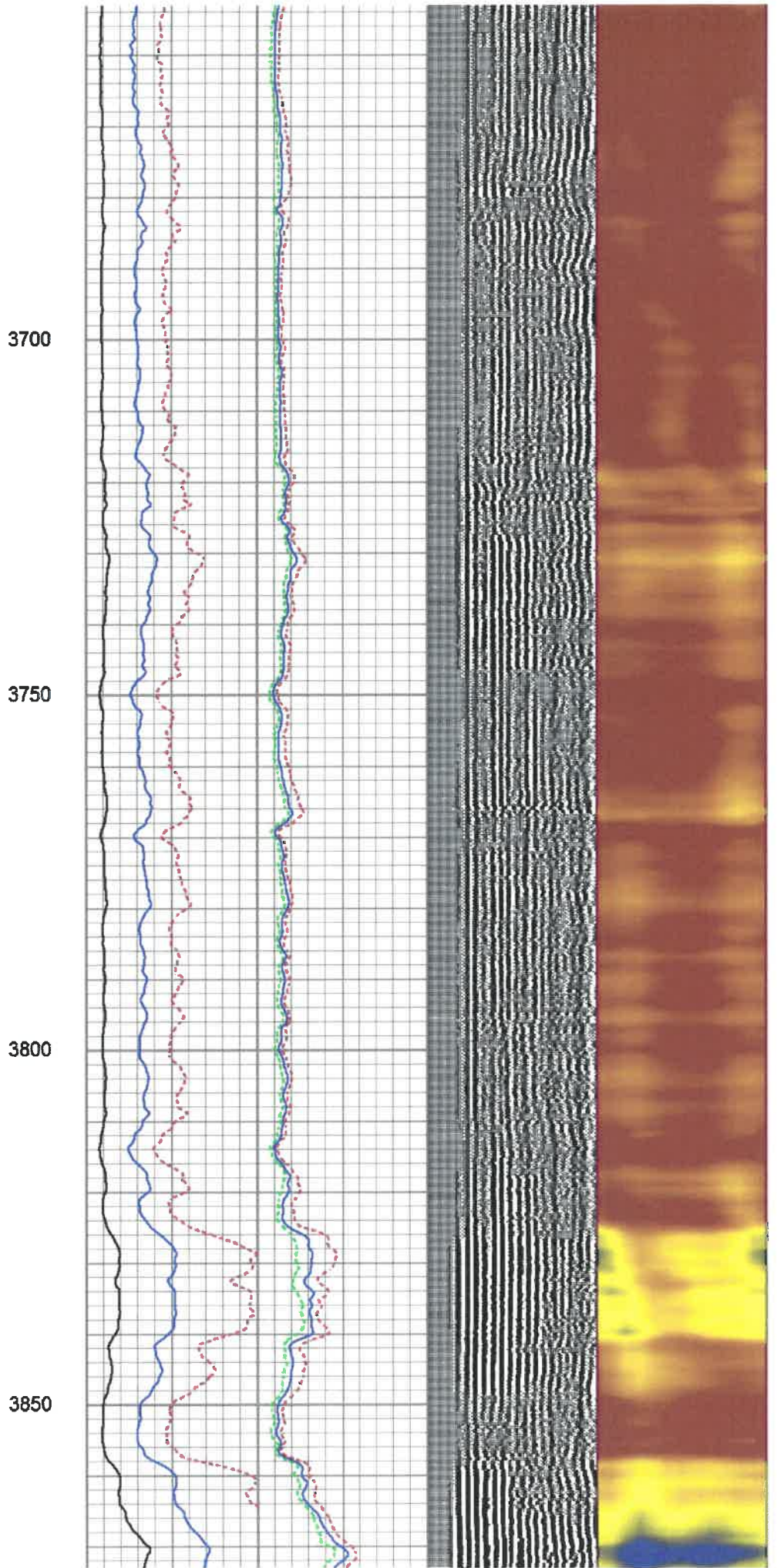
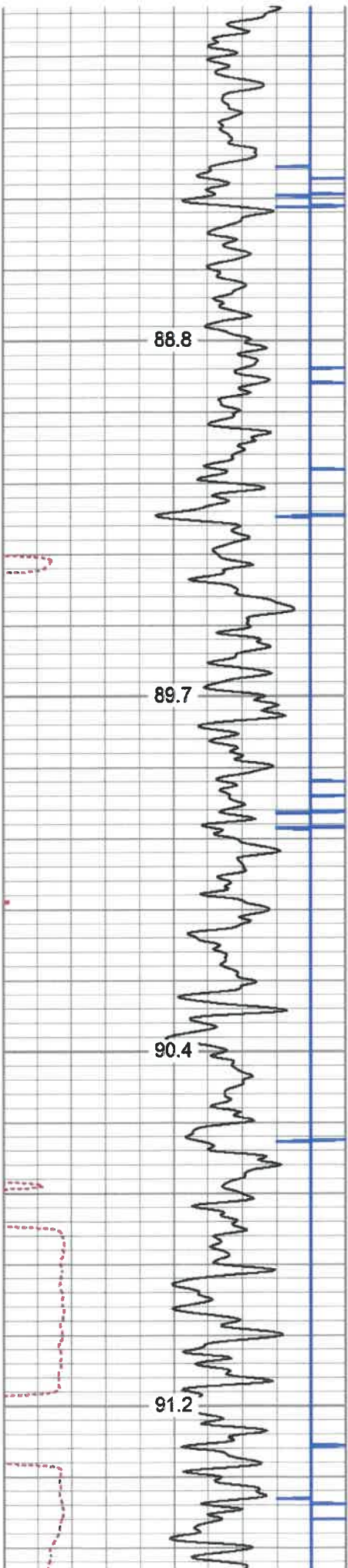
3250

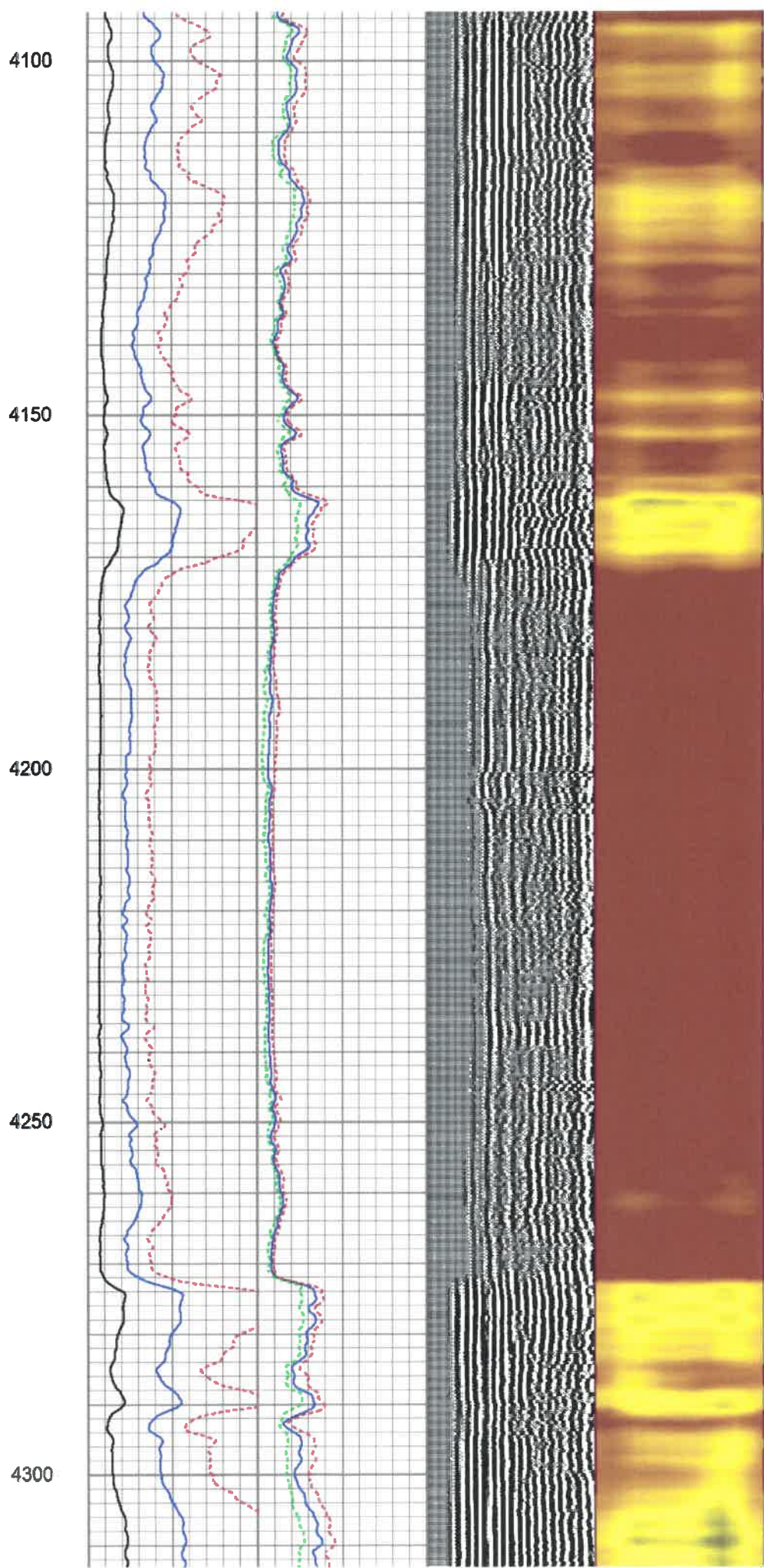
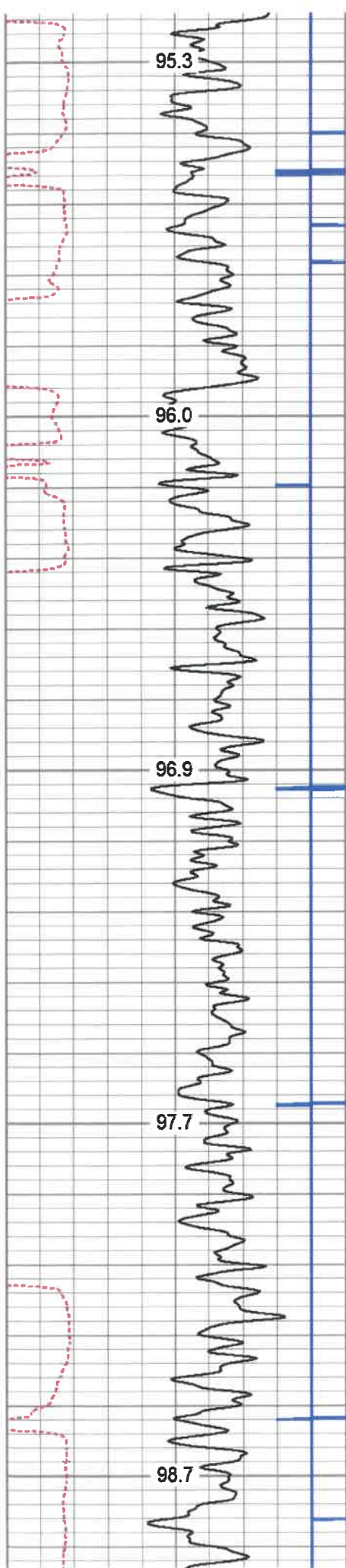
3300

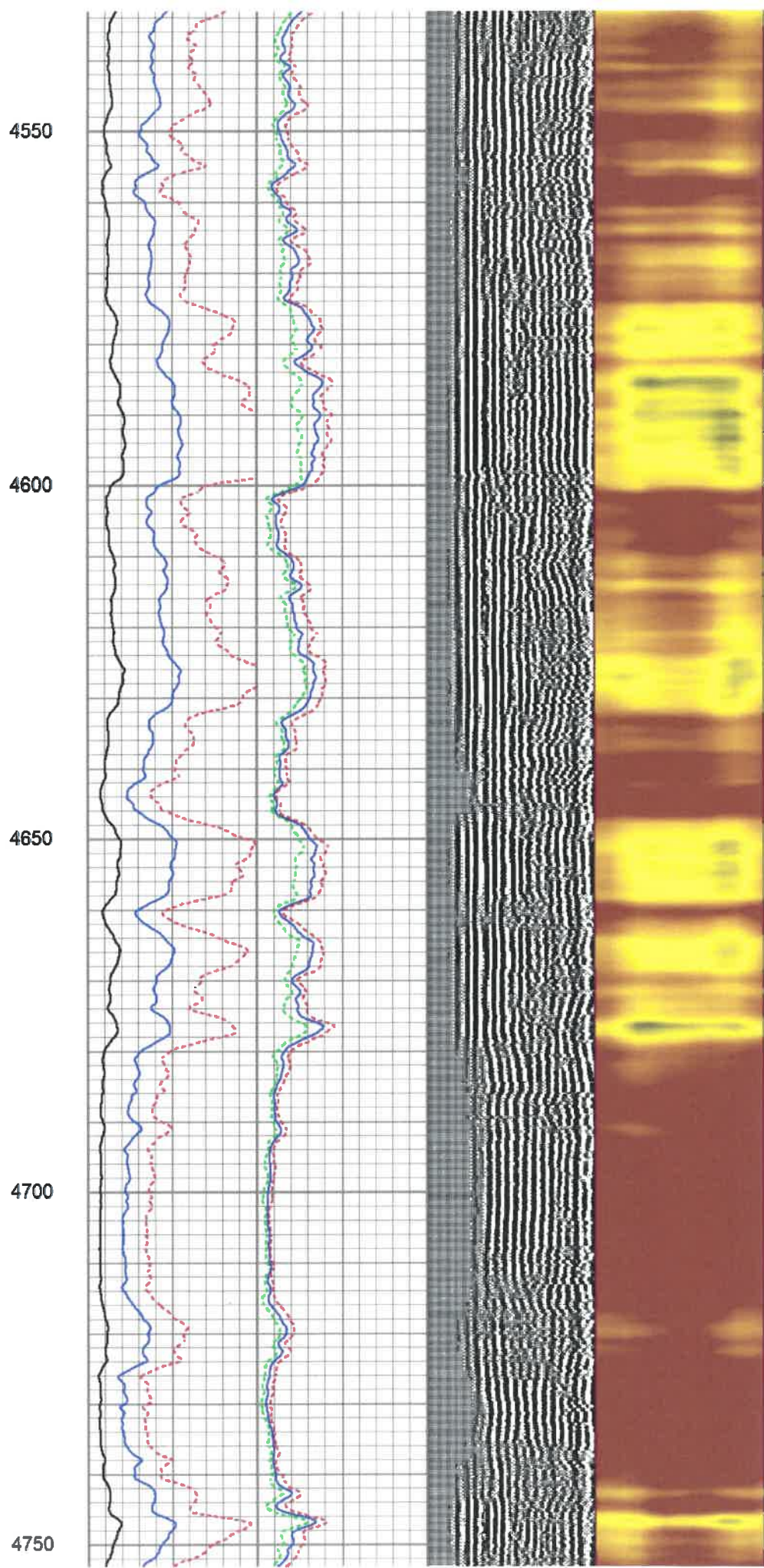
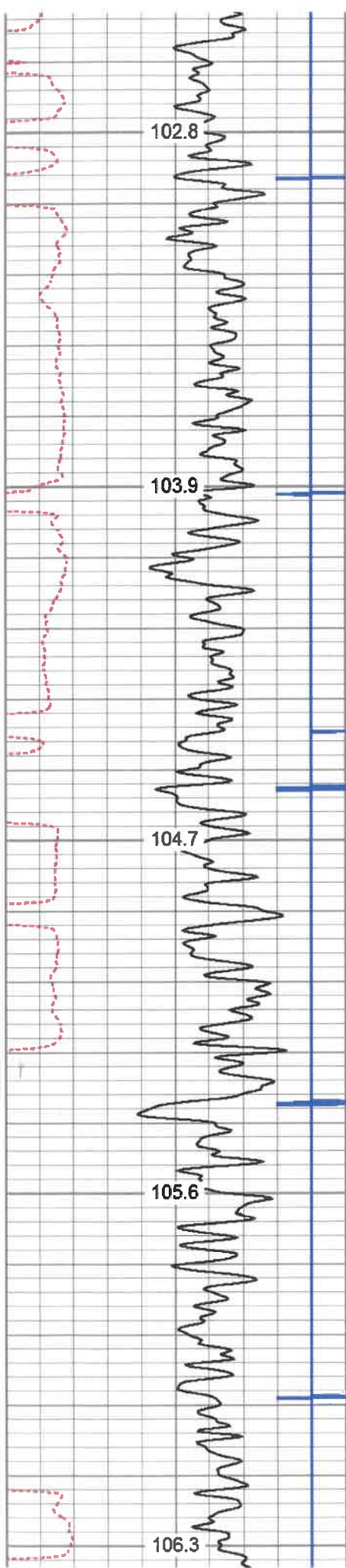
3350

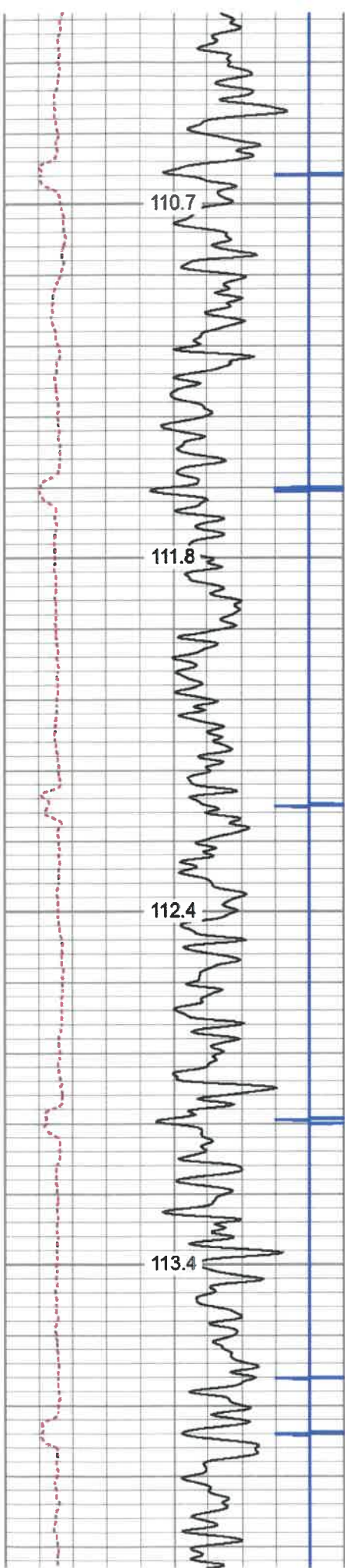
3400









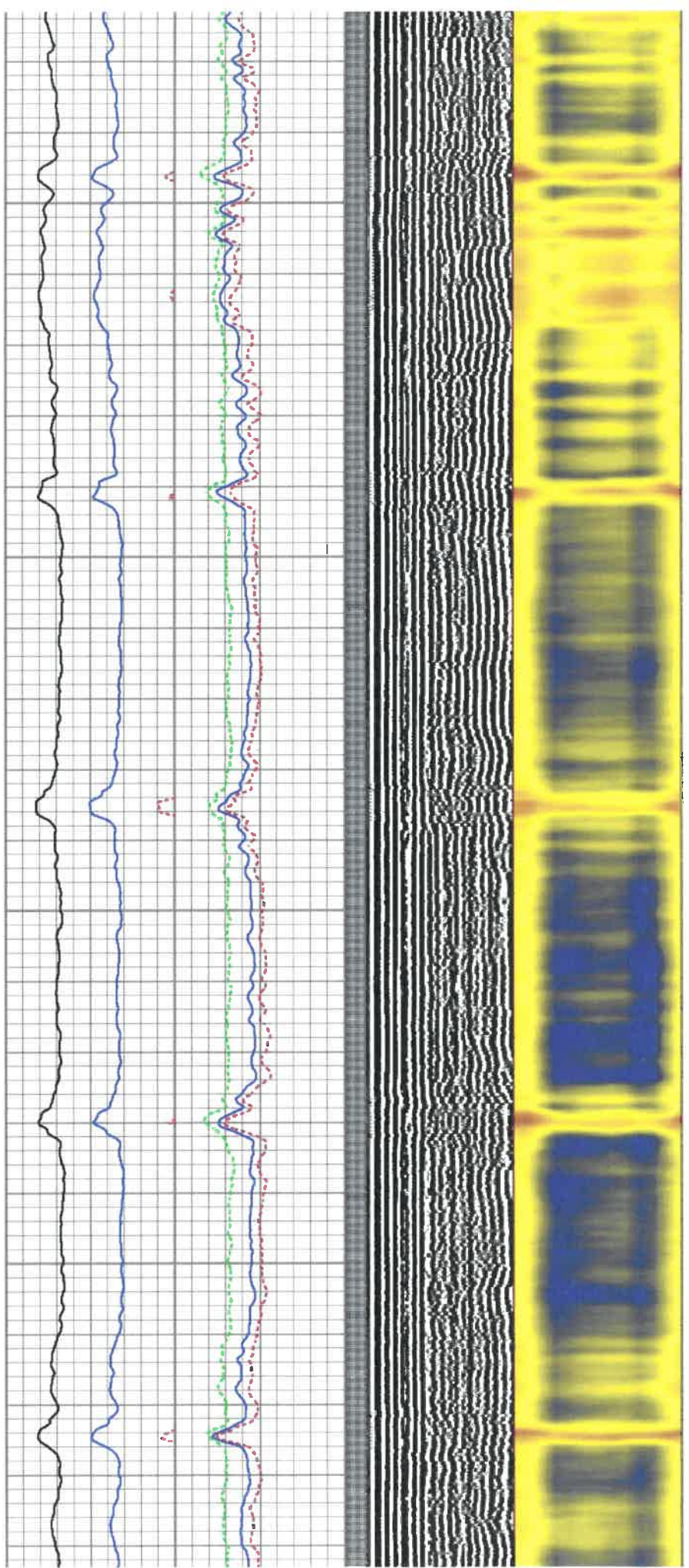


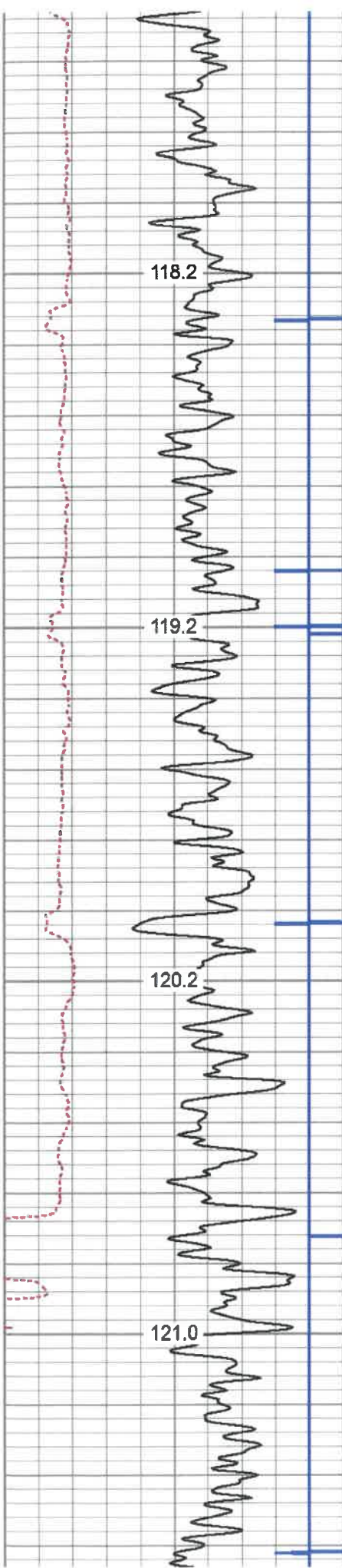
5000

5050

5100

5150



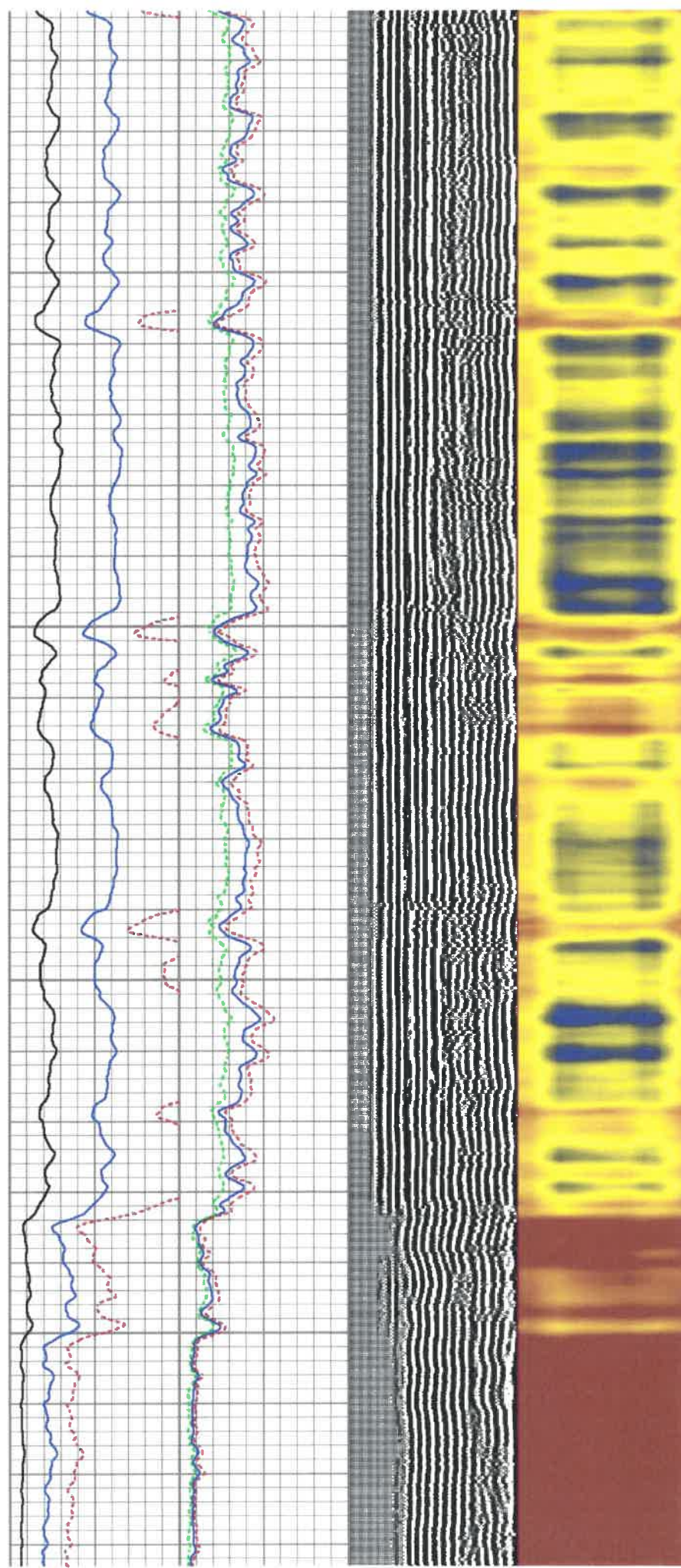


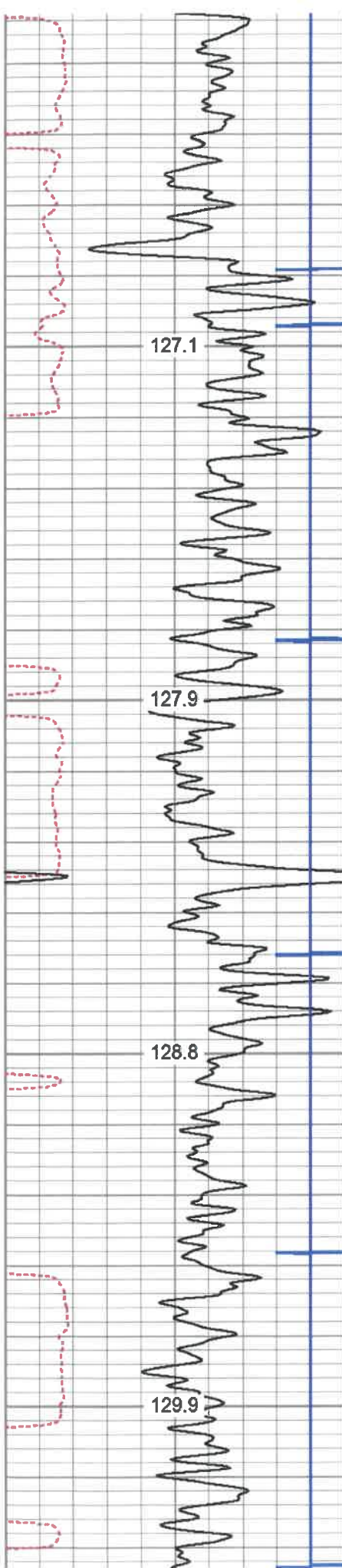
5450

5500

5550

5600



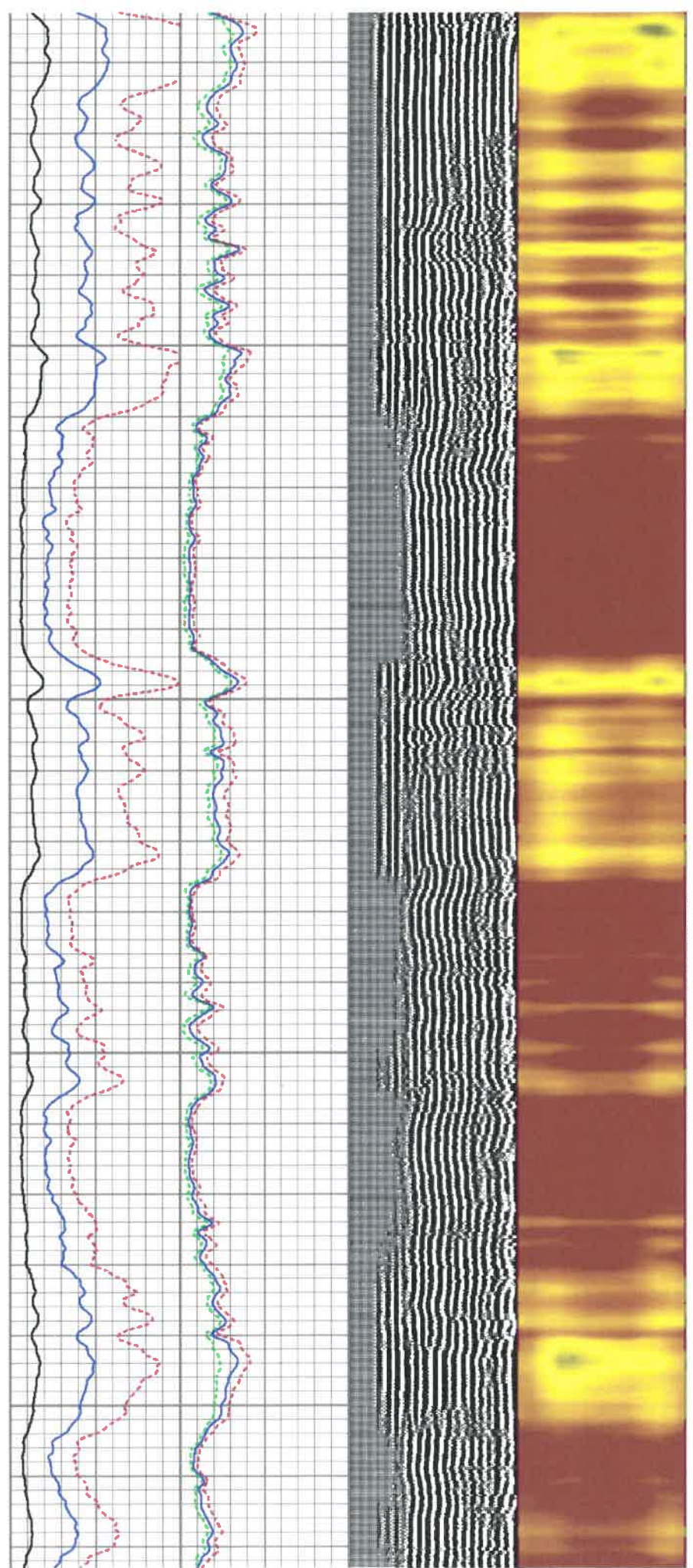


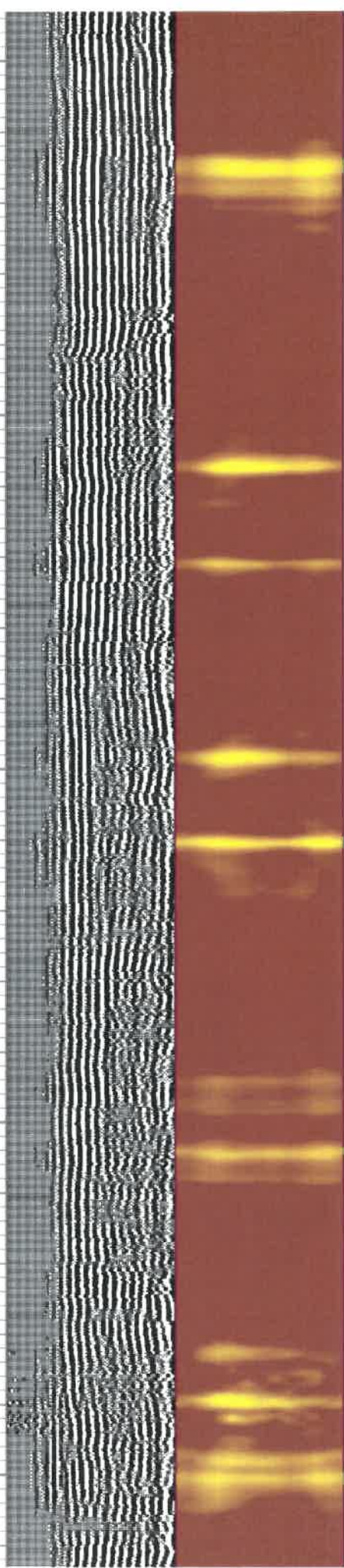
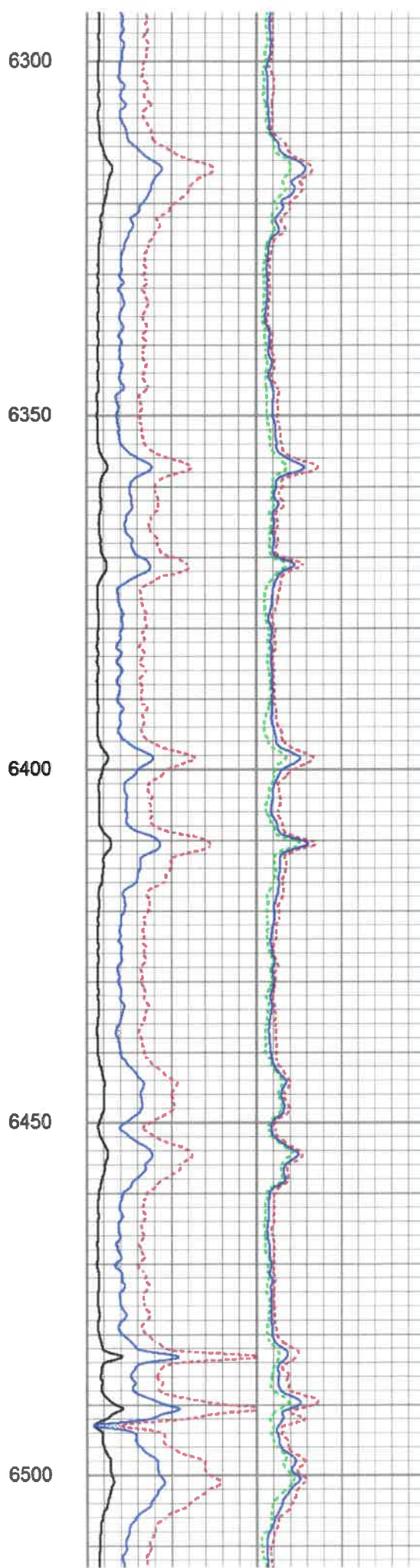
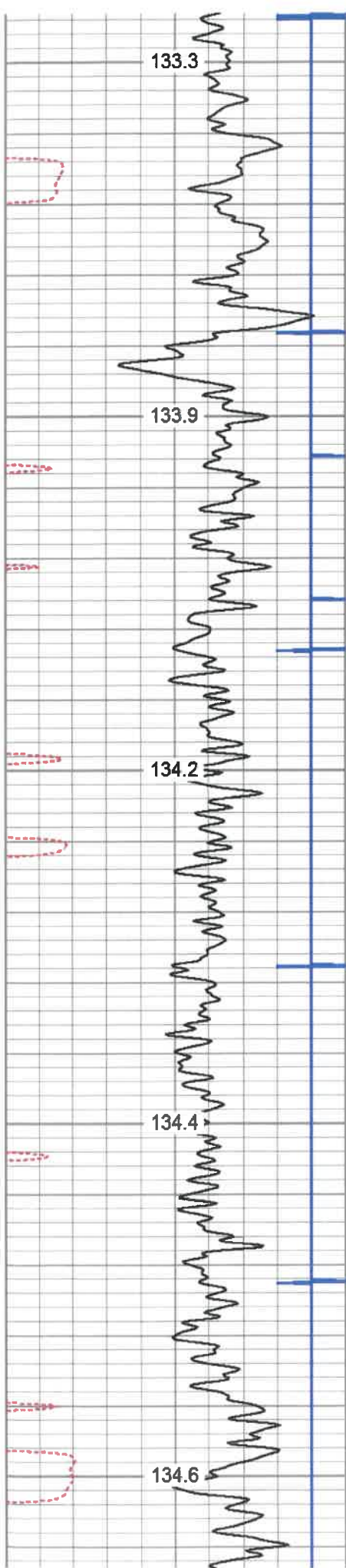
5900

5950

6000

6050



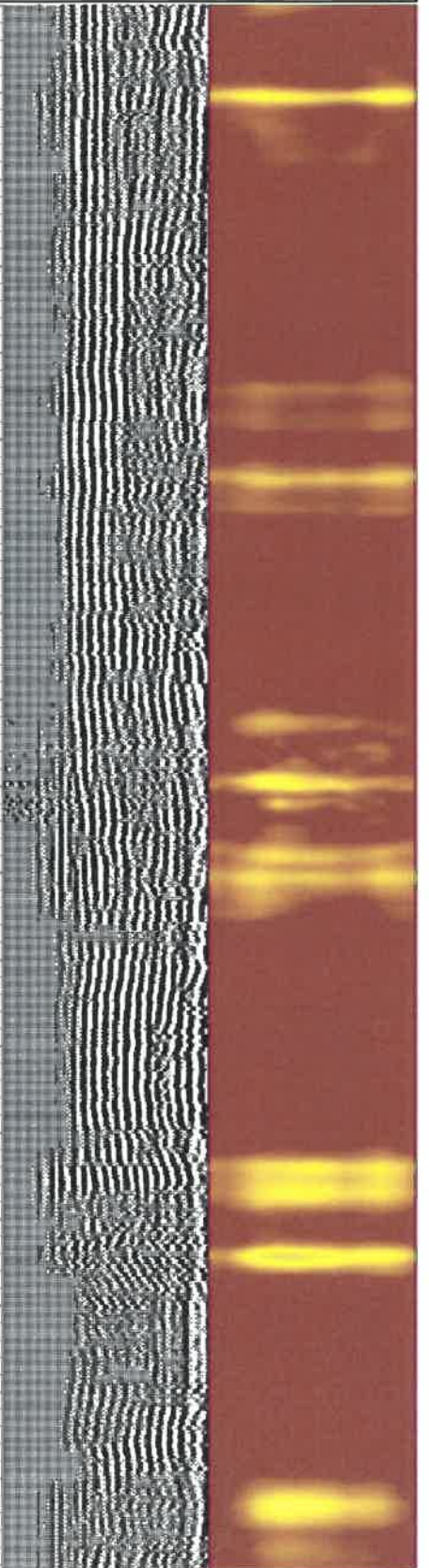
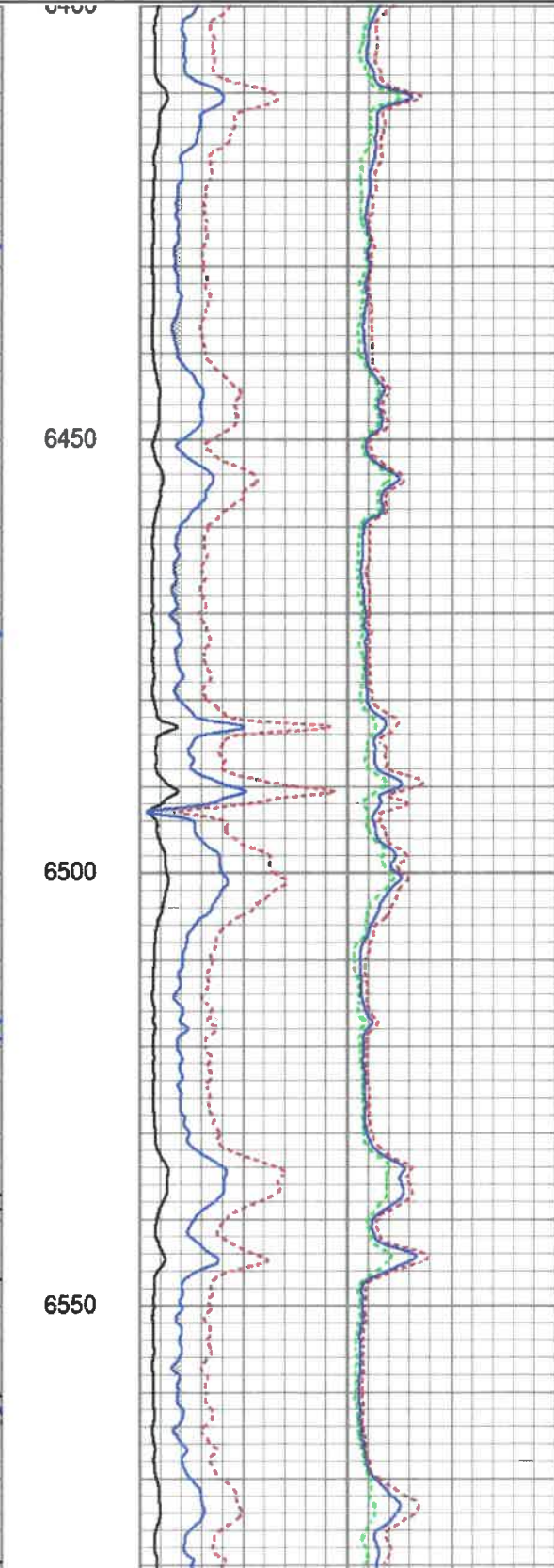
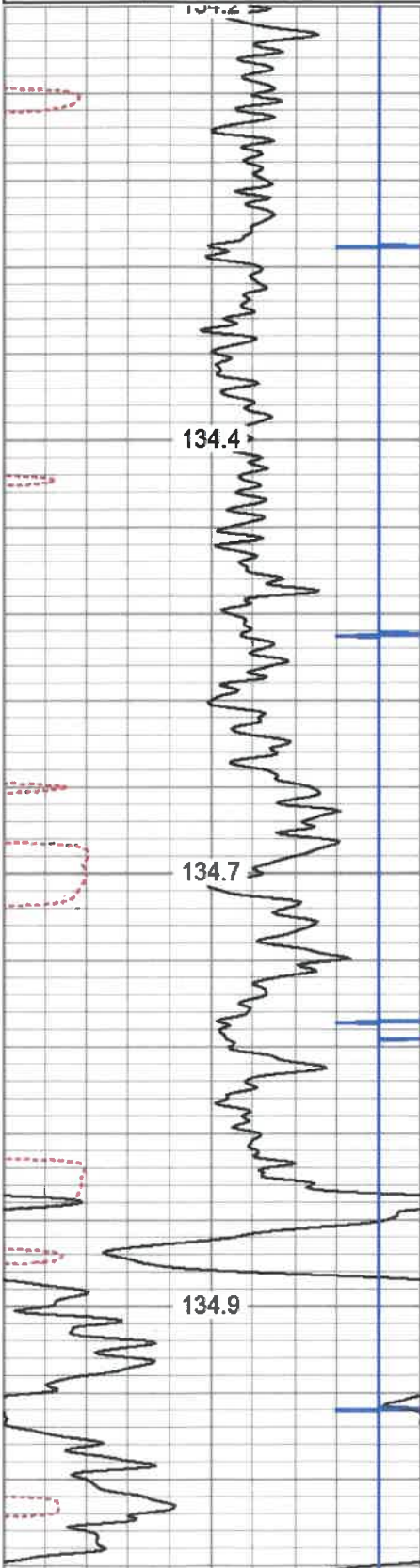




280	Travel Time (usec)	180
9	Casing Collar	-1
0	Gamma Ray (GAPI)	180
180	GR (GAPI)	360
TEMP (degF)		

Amplitude		Sector Amp AVG
0 (mV)	100	Sector Amp MAX
Amp X5		Sector Amp MIN
0 (mV)	20	
1 BONDIX	0	

VDL	1	Sector Map	12
200 (usec)	1200		



Calibrator Value: 1.0 GAPI  
 Background Reading: 0.0 cps  
 Calibrator Reading: 1.0 cps  
 Sensitivity: 0.5000 GAPI/cps

Segmented Cement Bond Log Calibration Report

Serial Number: T12\_01  
 Tool Model: Tek12  
 Calibration Casing Diameter: 5.500 in  
 Calibration Depth: 626.675 ft

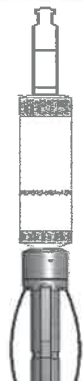
Master Calibration, performed Thu Sep 05 07:54:09 2019:

	Raw (v)		Calibrated (mv)		Results	
	Zero	Cal	Zero	Cal	Gain	Offset
3'	0.000	0.480	3.500	71.921	142.401	3.500
CAL	0.000	0.443				
5'	0.000	0.656	3.500	71.921	104.340	3.500
SUM						
S1	0.000	0.816	0.000	100.000	122.499	0.000
S2	0.000	0.879	0.000	100.000	113.798	0.000
S3	0.000	0.965	0.000	100.000	103.652	0.000
S4	0.000	0.939	0.000	100.000	106.455	0.000
S5	0.000	0.898	0.000	100.000	111.401	0.000
S6	0.000	0.839	0.000	100.000	119.214	0.000
S7	0.000	0.778	0.000	100.000	128.520	0.000
S8	0.000	0.739	0.000	100.000	135.244	0.000
S9	0.000	0.666	0.000	100.000	150.235	0.000
S10	0.000	0.604	0.000	100.000	165.448	0.000
S11	0.000	0.646	0.000	100.000	154.738	0.000
S12	0.000	0.711	0.000	100.000	140.642	0.000

Temperature Calibration Report

Serial Number: T12\_01  
 Tool Model: Tek12  
 Performed: Fri Oct 22 17:21:06 2010

	Reference	Reading
Low Reference:	0.00 degF	0.00 usec
High Reference:	1.00 degF	1.00 usec
Gain:	0.33	
Offset:	0.00	
Delta Spacing	2	

Sensor	Offset (ft)	Schematic	Description	Length (ft)	O.D. (in)	Weight (lb)
CCL	19.20		Titan-1.4375 1 7/16 Titan Type II Cable Head	1.03	1.44	5.00
			CCL-312tekco (101) Tekco 3 1/8" 450 Deg. "F" SmCo Logging CCL	1.82	3.12	25.00
			Tek-2.75 2 3/4" Tekco Adjustable Centralizer	2.73	2.75	25.00