



# Gould #2240H 5"MD

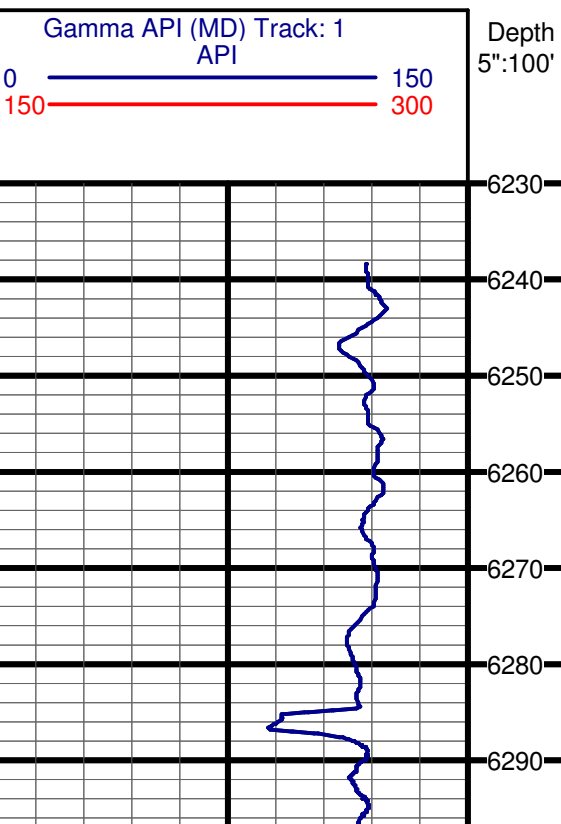
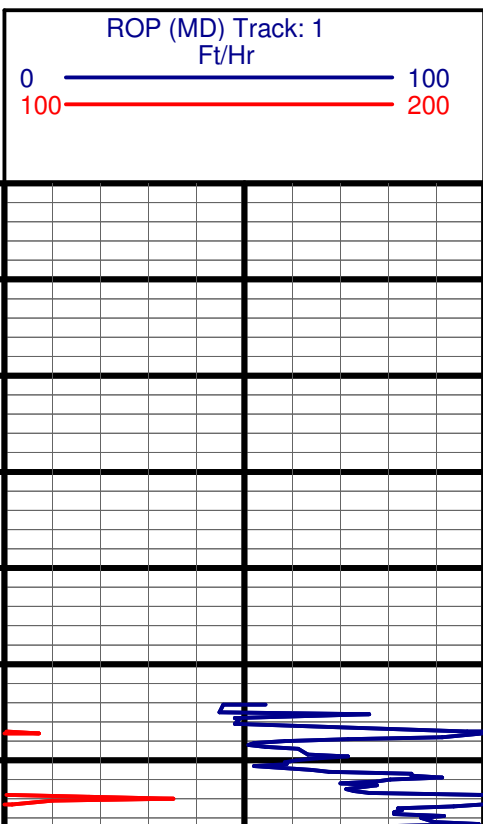
(Scale: 5":100')

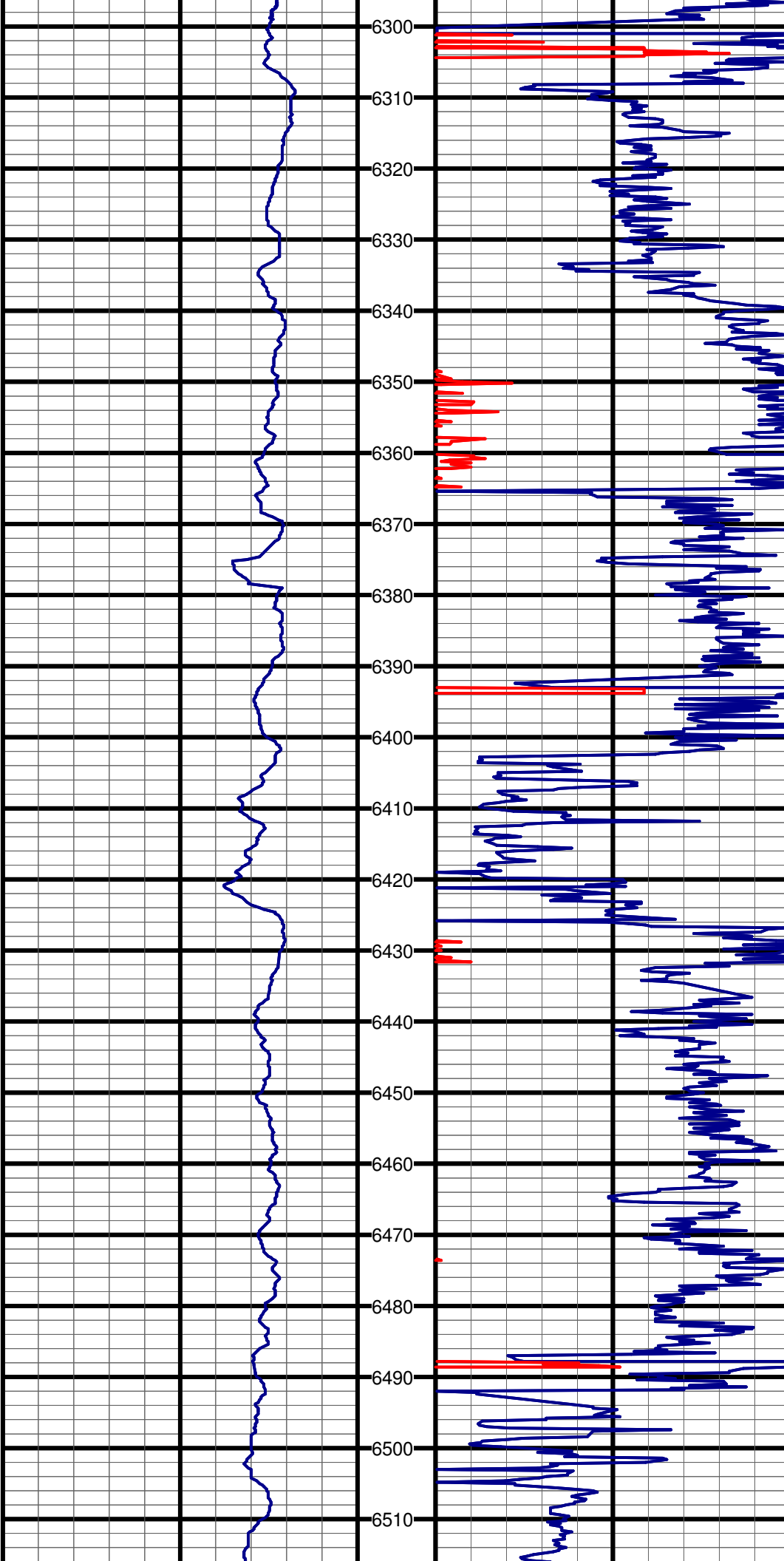
Company: XTO  
 Well: Gould 2240H  
 Field: Marcellus  
 Well ID: 474902114  
 Job Number: DDP-100209  
 Location: Jane Lew, West Virginia  
 Operator 1: Blake Holdridge  
 Operator 2: Justin Blakeney  
 State: WV  
 County: Upshur  
 Country: USA  
 Elev KB: 1216.01'  
 Elev DF: 1216.01'  
 Elev GL: 1200.01'

Comment 1:  
 Comment 2:  
 Comment 3:  
 Comment 4:  
 Comment 5:

Hole Data			Casing Record		
Size	From	To	Size	From	To
12 1/4"	0'	2734'	13 5/8"	0'	2734'
8 3/4"	2734'	10742'	9 5/8"	2734'	10742'

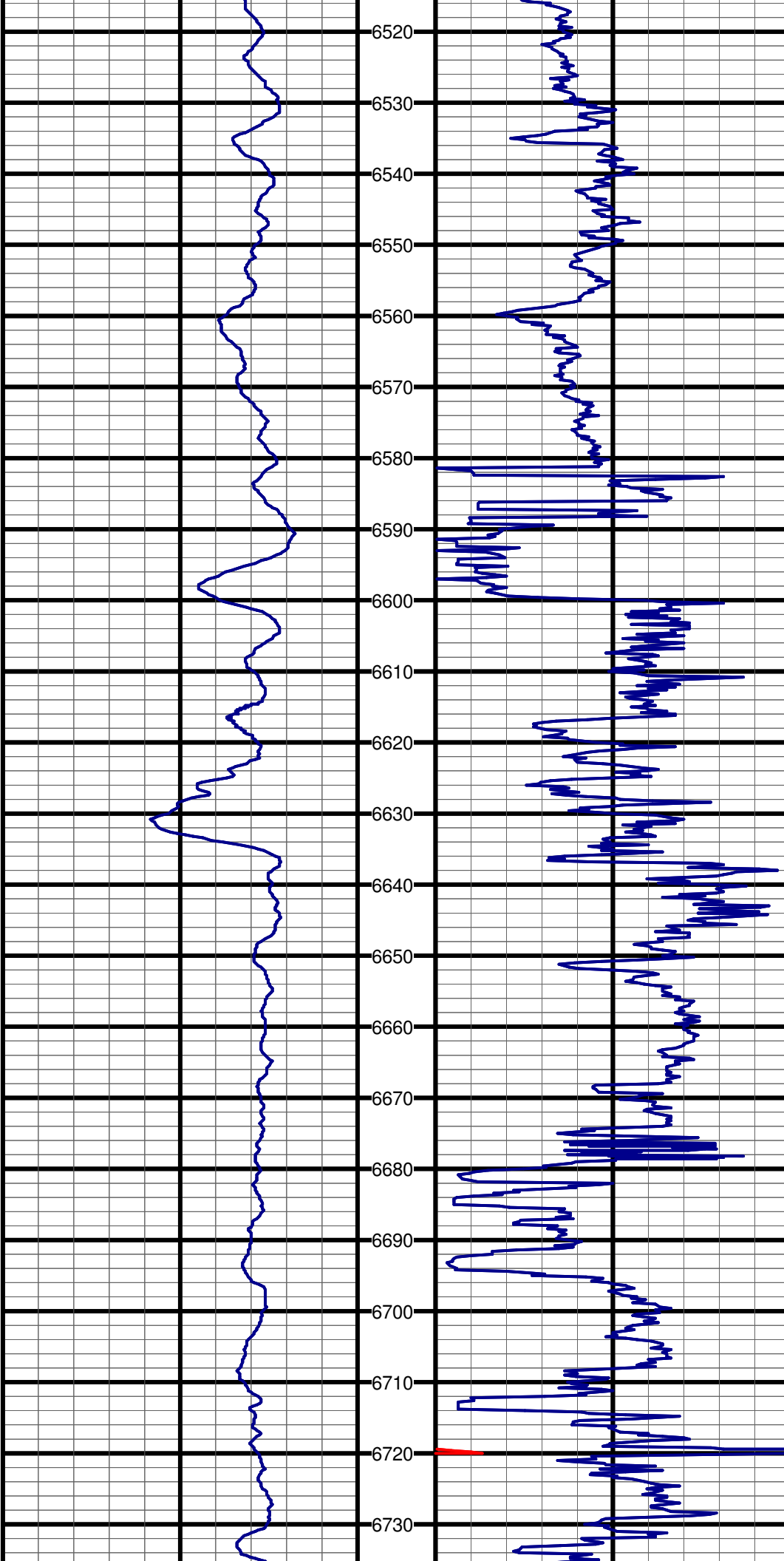
Tool Run Data		Run #1	Run #2	Run #3	Run #4	Run #5
Tool S/N	300	300	115			
Cal Factor	3.94	3.94	3.94			
Gamma Offset	61'	61'	61'			
Start Depth	6610'	6980'	7237'			
Start Date	10/10/10	10/13/10	10/15/10			
Start Time	11:00	19:00	00:00			
End Depth	6980'	7237'	10742'			
End Date	10/13/10	10/15/10	10/19/10			
End Time	17:00	00:00	22:00			





#1 MD:6327.0 TVD:6240.0 I:11.5 A:278.7 VS:-590.3

#2 MD:6422.0 TVD:6333.3 I:10.2 A:274.6 VS:-607.7



#3 MD:6517.0 TVD:6427.0 I:8.6 A:271.5 VS:-623.0

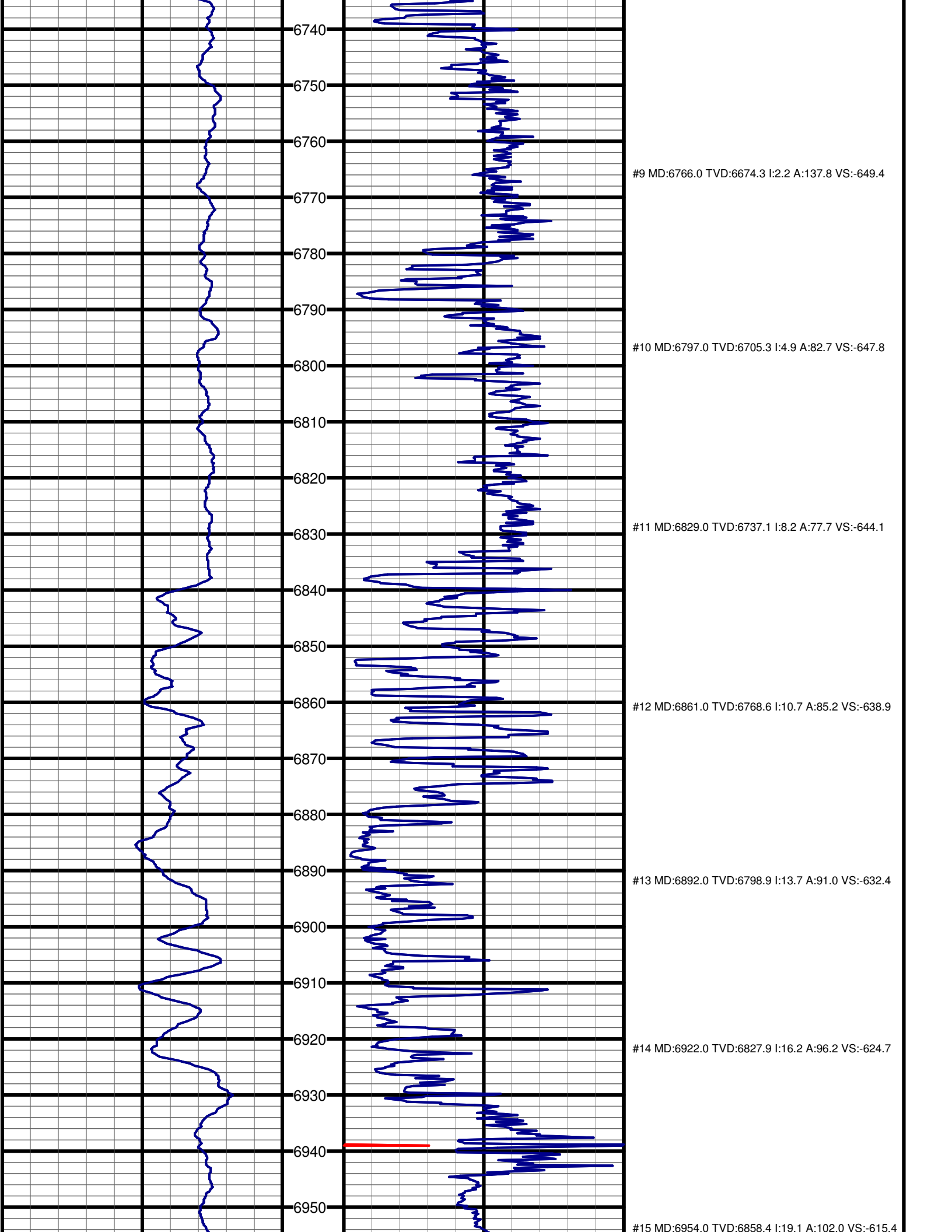
#4 MD:6609.0 TVD:6518.1 I:7.6 A:267.2 VS:-635.9

#5 MD:6641.0 TVD:6549.9 I:7.0 A:267.9 VS:-639.9

#6 MD:6672.0 TVD:6580.6 I:6.6 A:260.1 VS:-643.6

#7 MD:6703.0 TVD:6611.5 I:5.8 A:246.9 VS:-646.9

#8 MD:6734.0 TVD:6642.4 I:3.7 A:217.8 VS:-649.1



6740

6750

6760

#9 MD:6766.0 TVD:6674.3 I:2.2 A:137.8 VS:-649.4

6770

6780

6790

#10 MD:6797.0 TVD:6705.3 I:4.9 A:82.7 VS:-647.8

6800

6810

6820

6830

#11 MD:6829.0 TVD:6737.1 I:8.2 A:77.7 VS:-644.1

6840

6850

6860

#12 MD:6861.0 TVD:6768.6 I:10.7 A:85.2 VS:-638.9

6870

6880

6890

#13 MD:6892.0 TVD:6798.9 I:13.7 A:91.0 VS:-632.4

6900

6910

6920

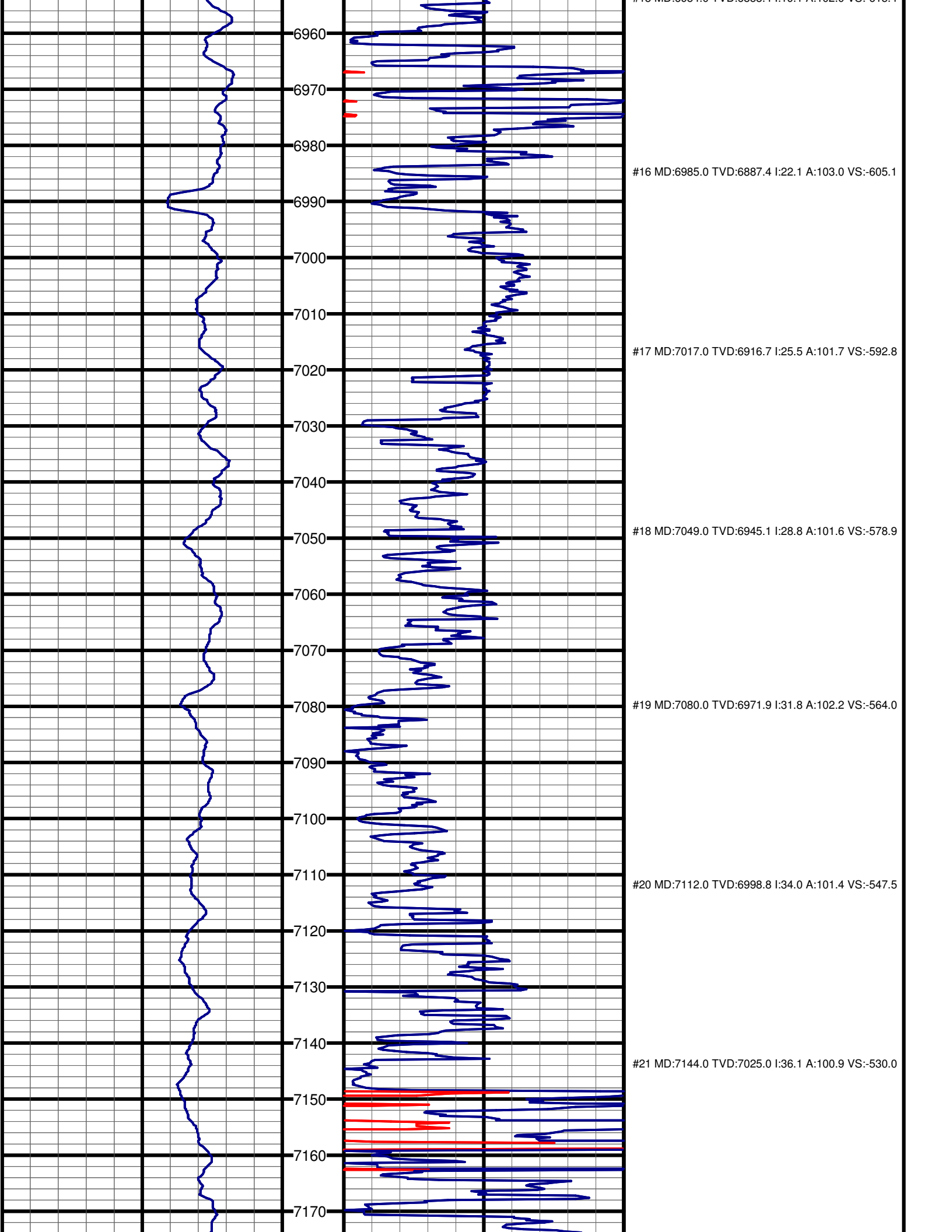
#14 MD:6922.0 TVD:6827.9 I:16.2 A:96.2 VS:-624.7

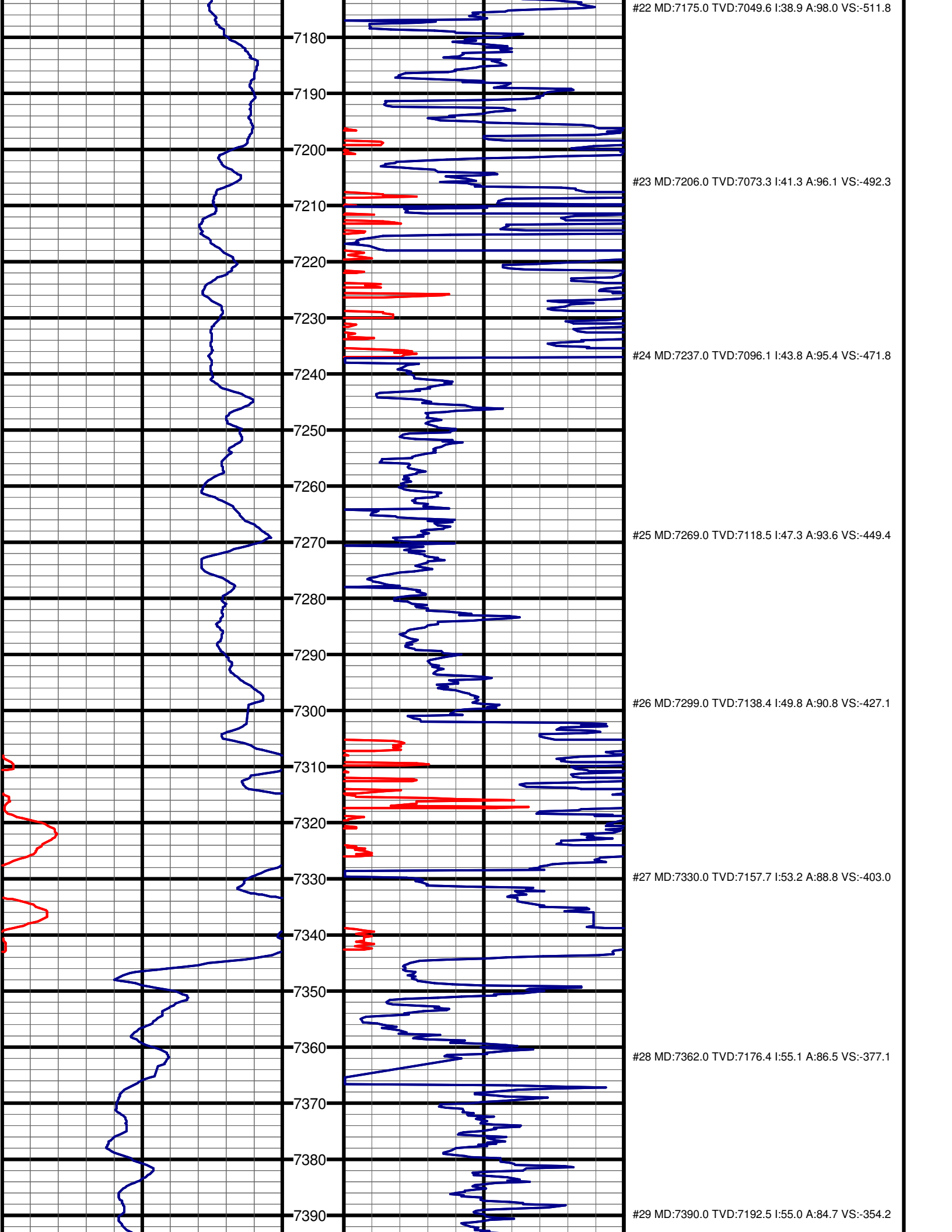
6930

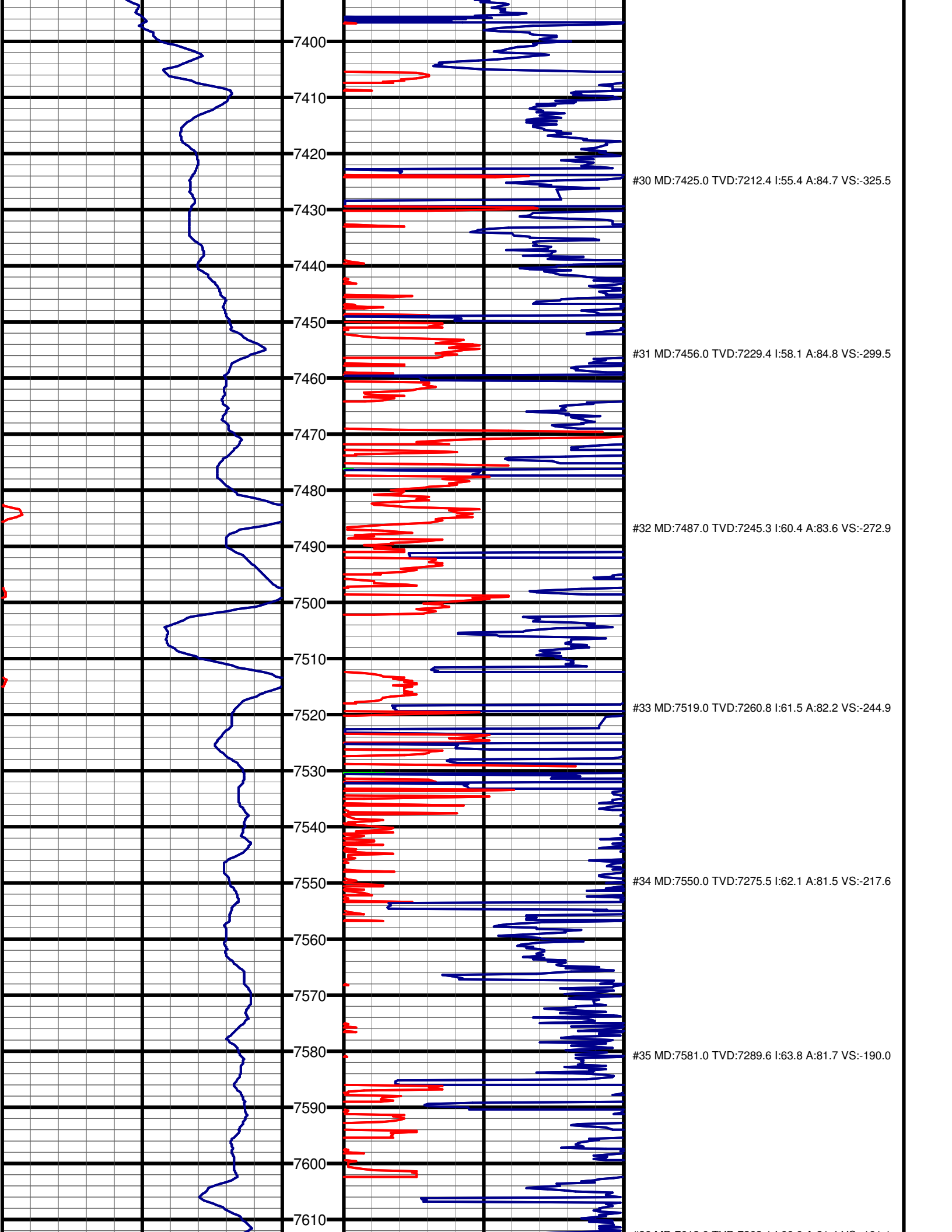
6940

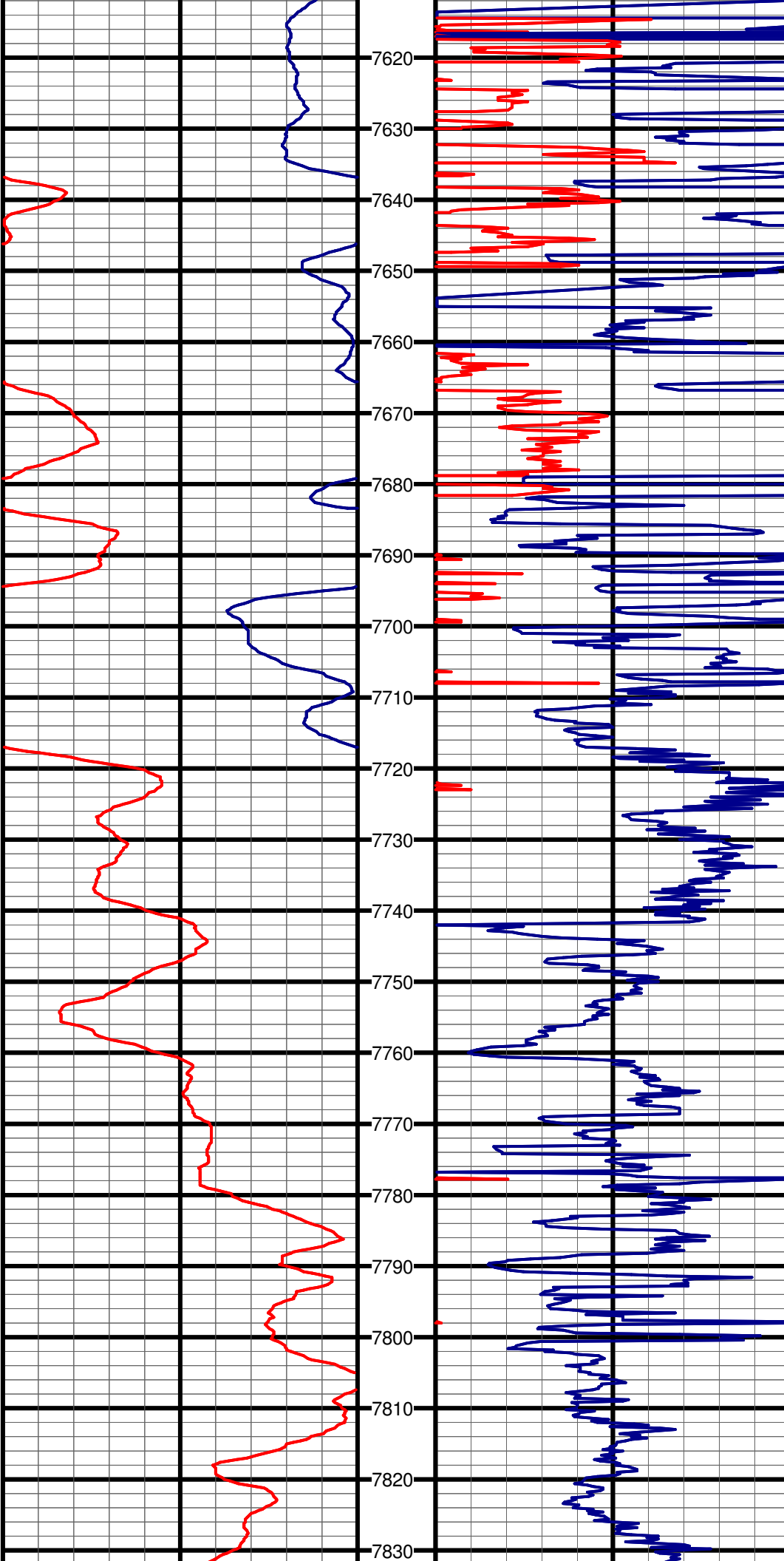
6950

#15 MD:6954.0 TVD:6858.4 I:19.1 A:102.0 VS:-615.4









#36 MD:7613.0 TVD:7303.1 I:66.0 A:81.4 VS:-161.1

#37 MD:7644.0 TVD:7315.4 I:67.6 A:80.6 VS:-132.6

#38 MD:7676.0 TVD:7327.4 I:68.1 A:79.6 VS:-103.1

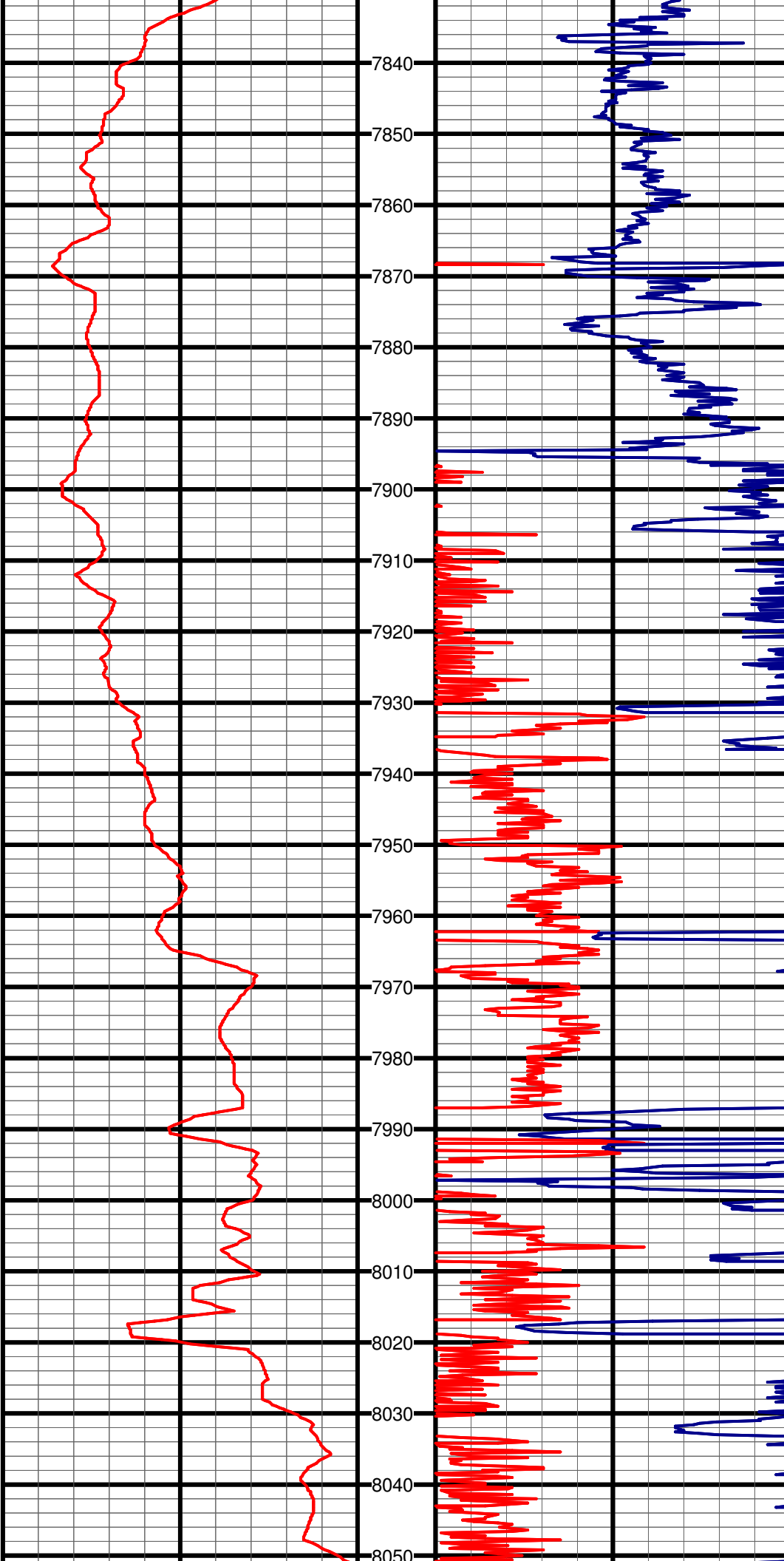
#39 MD:7707.0 TVD:7338.3 I:70.9 A:81.3 VS:-74.1

#40 MD:7739.0 TVD:7348.0 I:73.7 A:83.0 VS:-43.6

#41 MD:7770.0 TVD:7355.9 I:76.6 A:85.4 VS:-13.6

#42 MD:7801.0 TVD:7362.2 I:80.1 A:86.8 VS:16.7





#43 MD:7833.0 TVD:7366.6 I:84.0 A:88.9 VS:48.3

7840

7850

7860

#44 MD:7864.0 TVD:7368.5 I:89.1 A:88.2 VS:79.2

7870

7880

7890

#45 MD:7896.0 TVD:7368.4 I:91.3 A:88.2 VS:111.1

7900

7910

7920

#46 MD:7927.0 TVD:7367.6 I:91.6 A:87.9 VS:142.0

7930

7940

7950

7960

7970

7980

7990

8000

8010

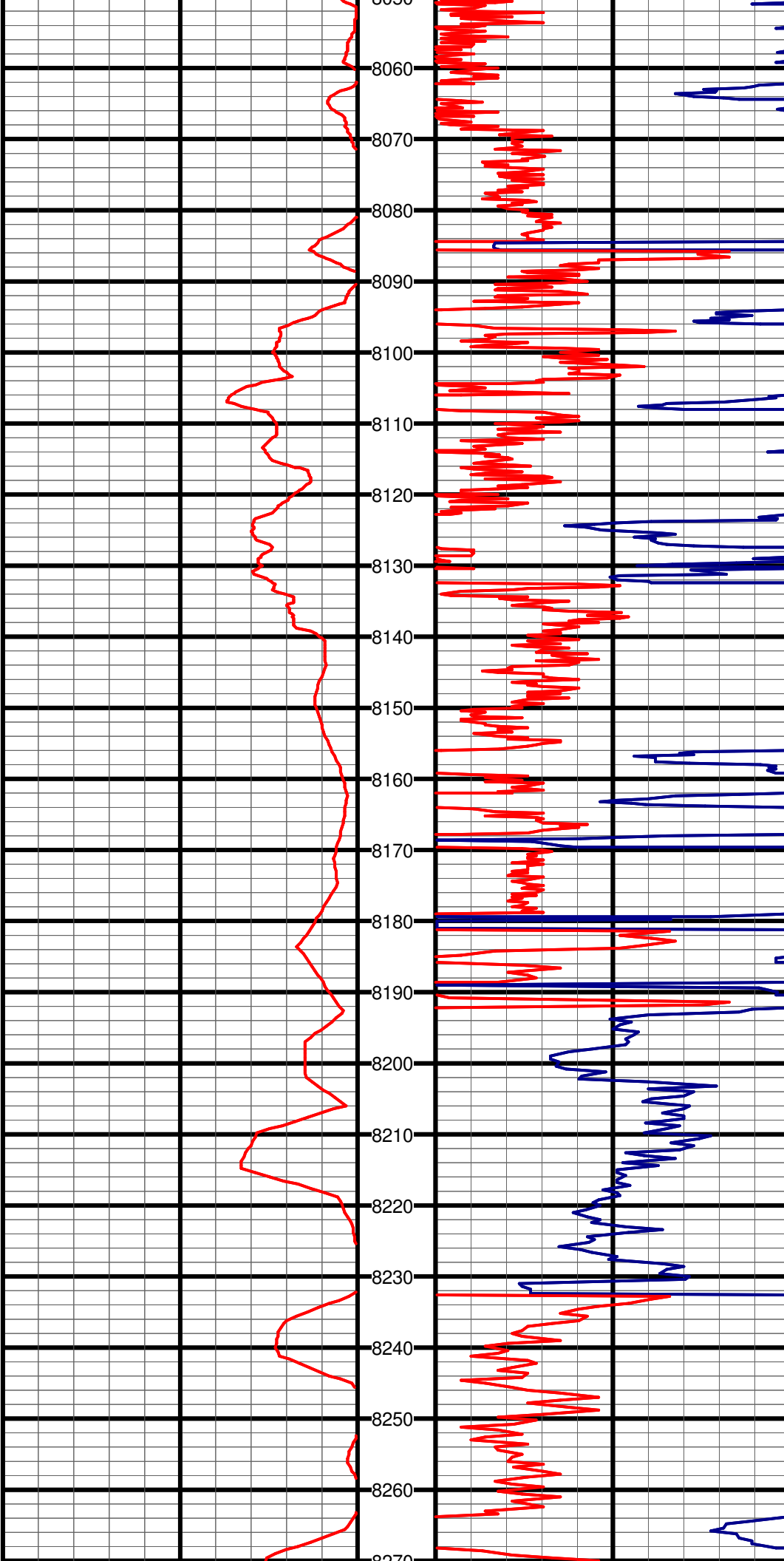
8020

#47 MD:8021.0 TVD:7365.2 I:91.3 A:88.5 VS:235.7

8030

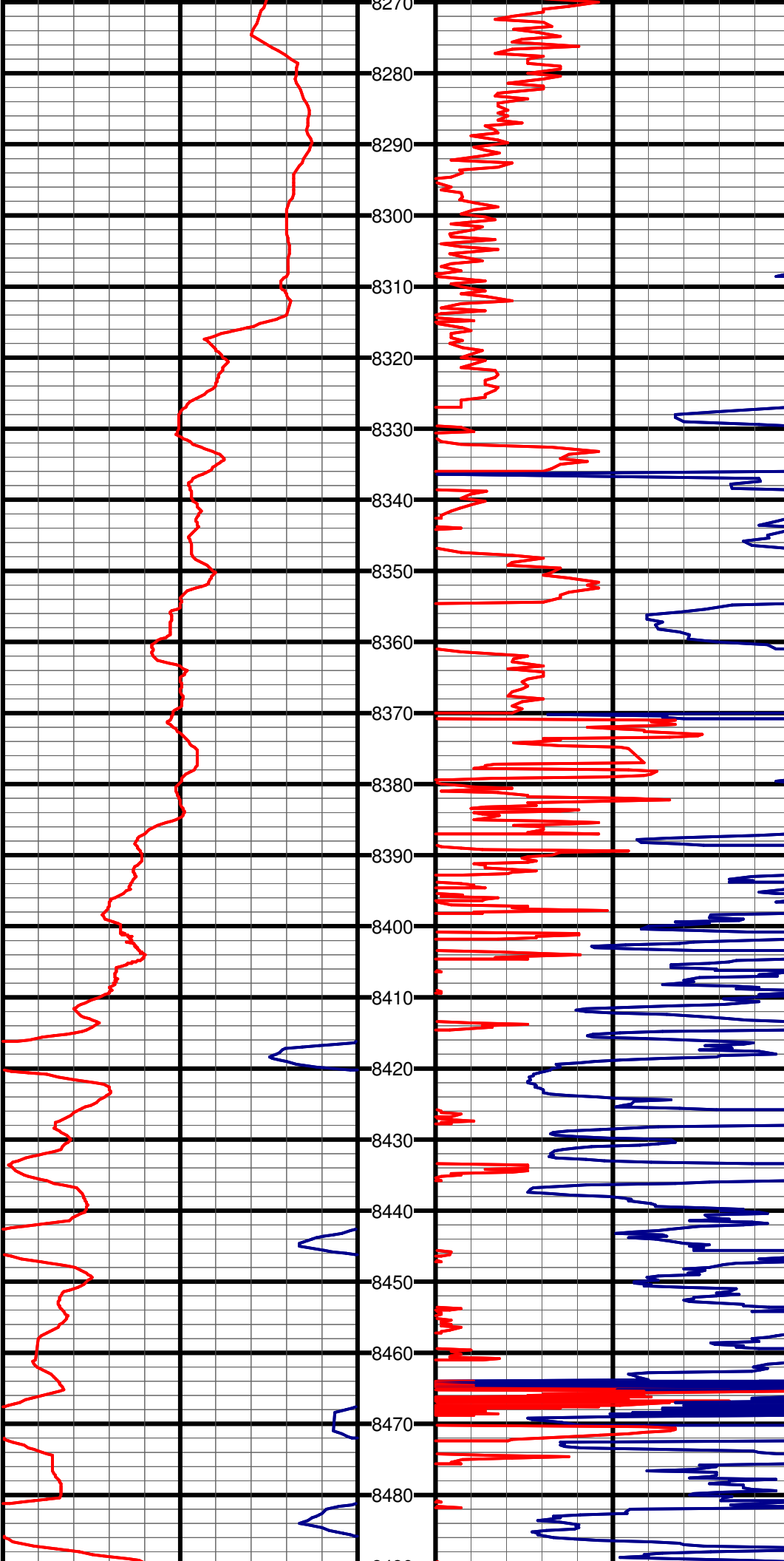
8040

8050



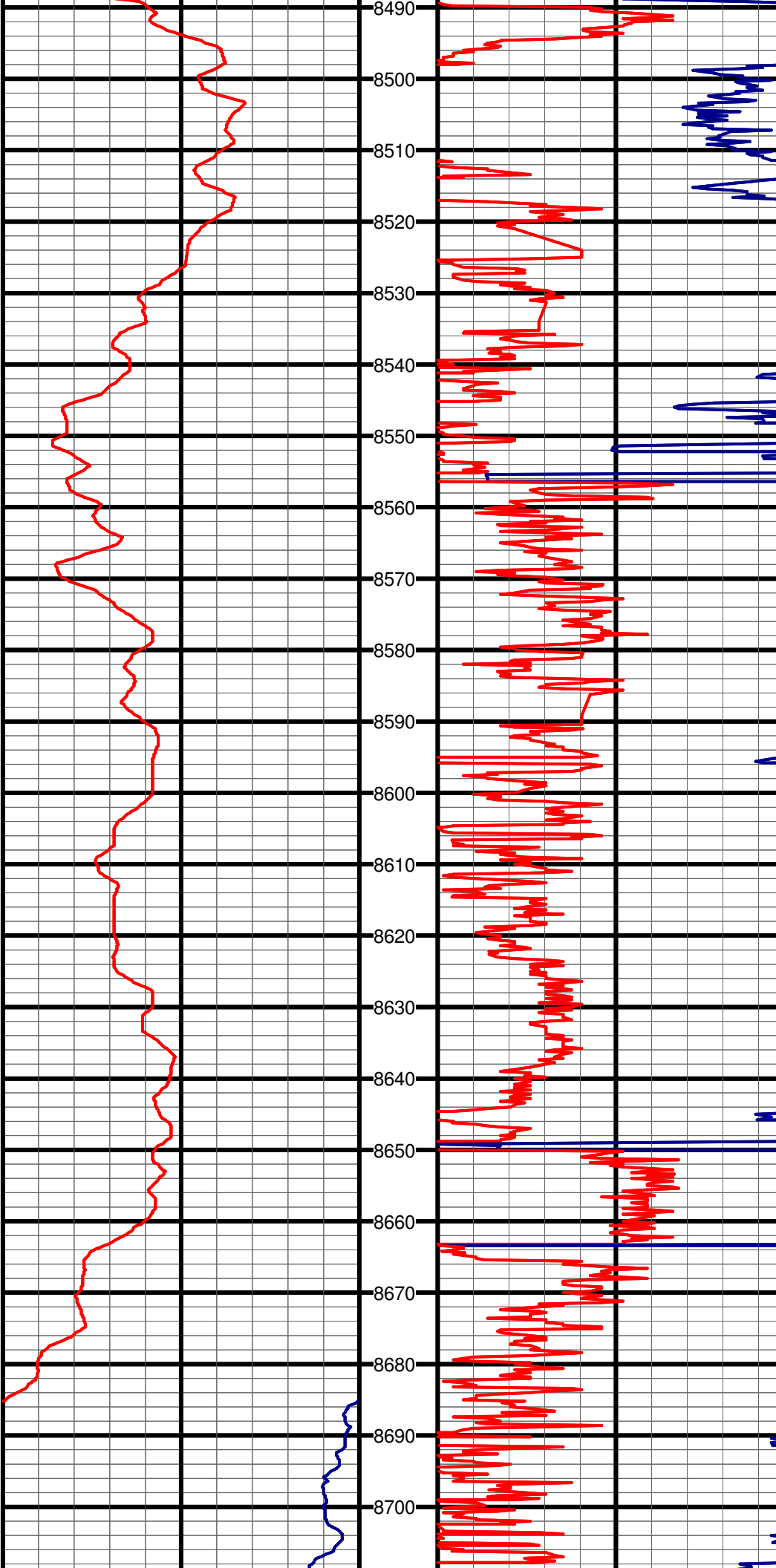
#48 MD:8116.0 TVD:7363.0 I:91.4 A:87.9 VS:330.4

#49 MD:8209.0 TVD:7360.4 I:91.8 A:84.3 VS:423.3



#50 MD:8303.0 TVD:7357.8 I:91.3 A:84.3 VS:517.2

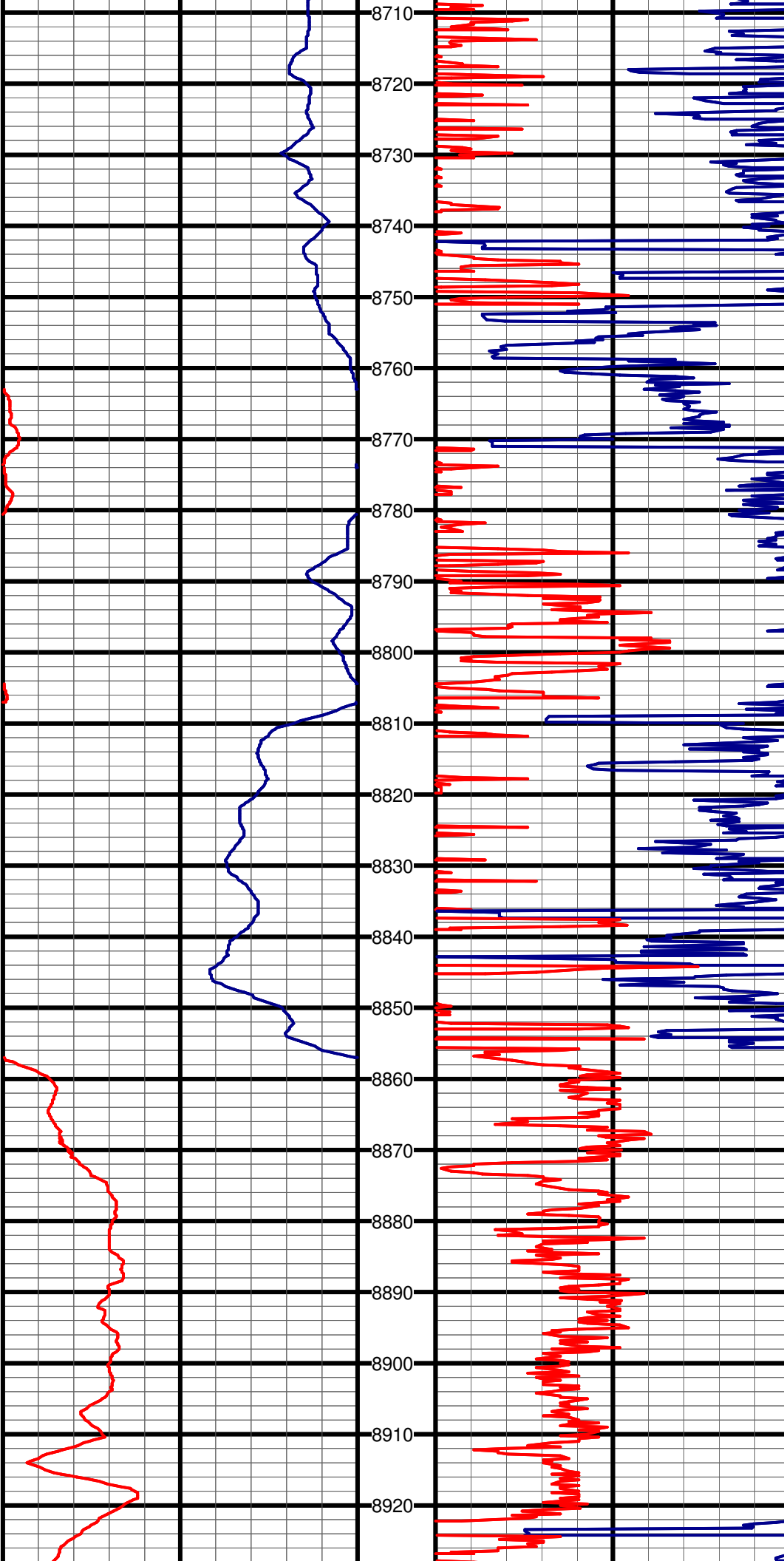
#51 MD:8398.0 TVD:7356.4 I:90.4 A:84.0 VS:612.2



#52 MD:8492.0 TVD:7354.0 I:92.6 A:83.8 VS:706.2

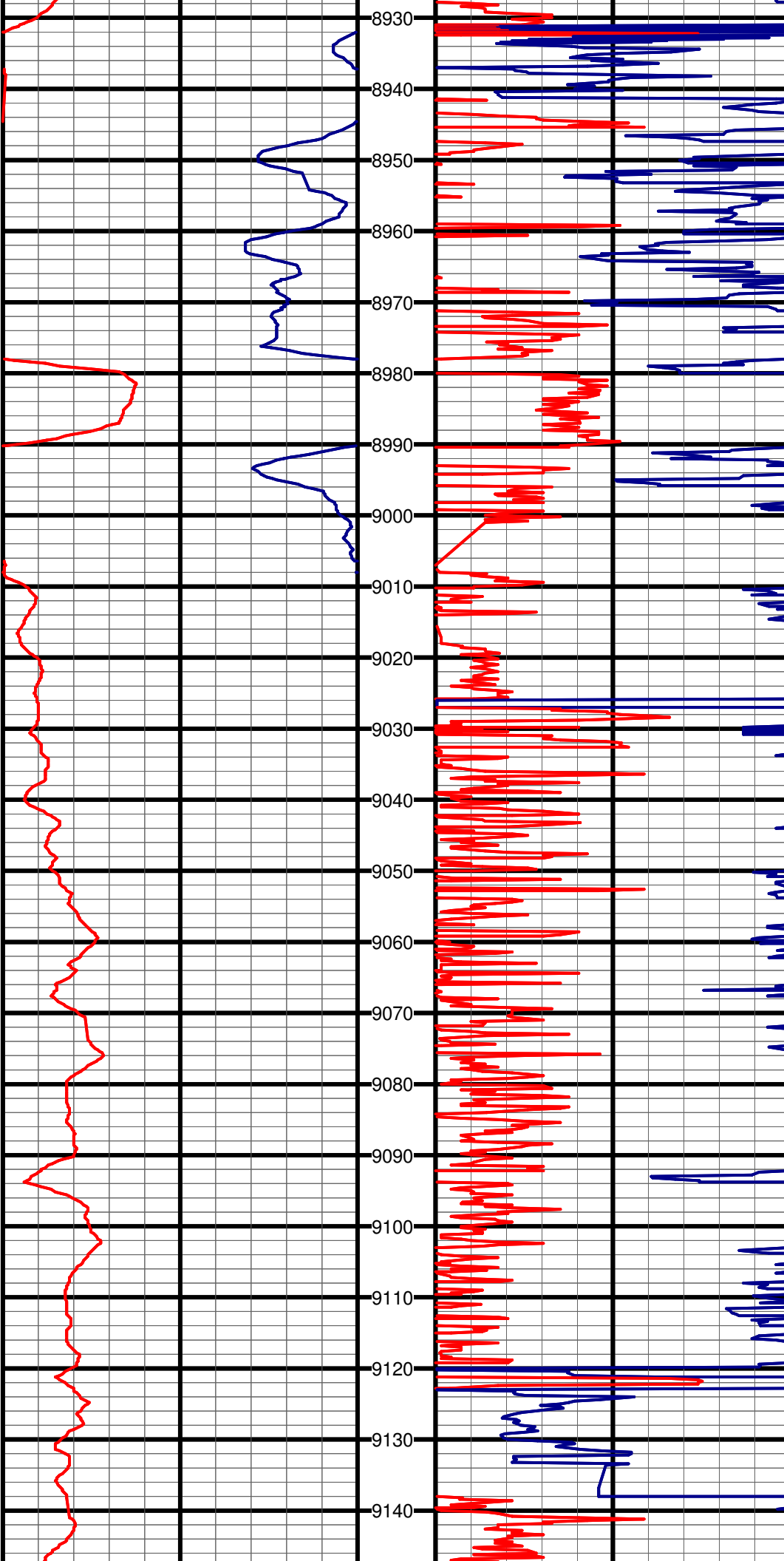
#53 MD:8586.0 TVD:7350.1 I:92.1 A:83.3 VS:800.1

#54 MD:8679.0 TVD:7347.1 I:91.6 A:83.1 VS:893.0



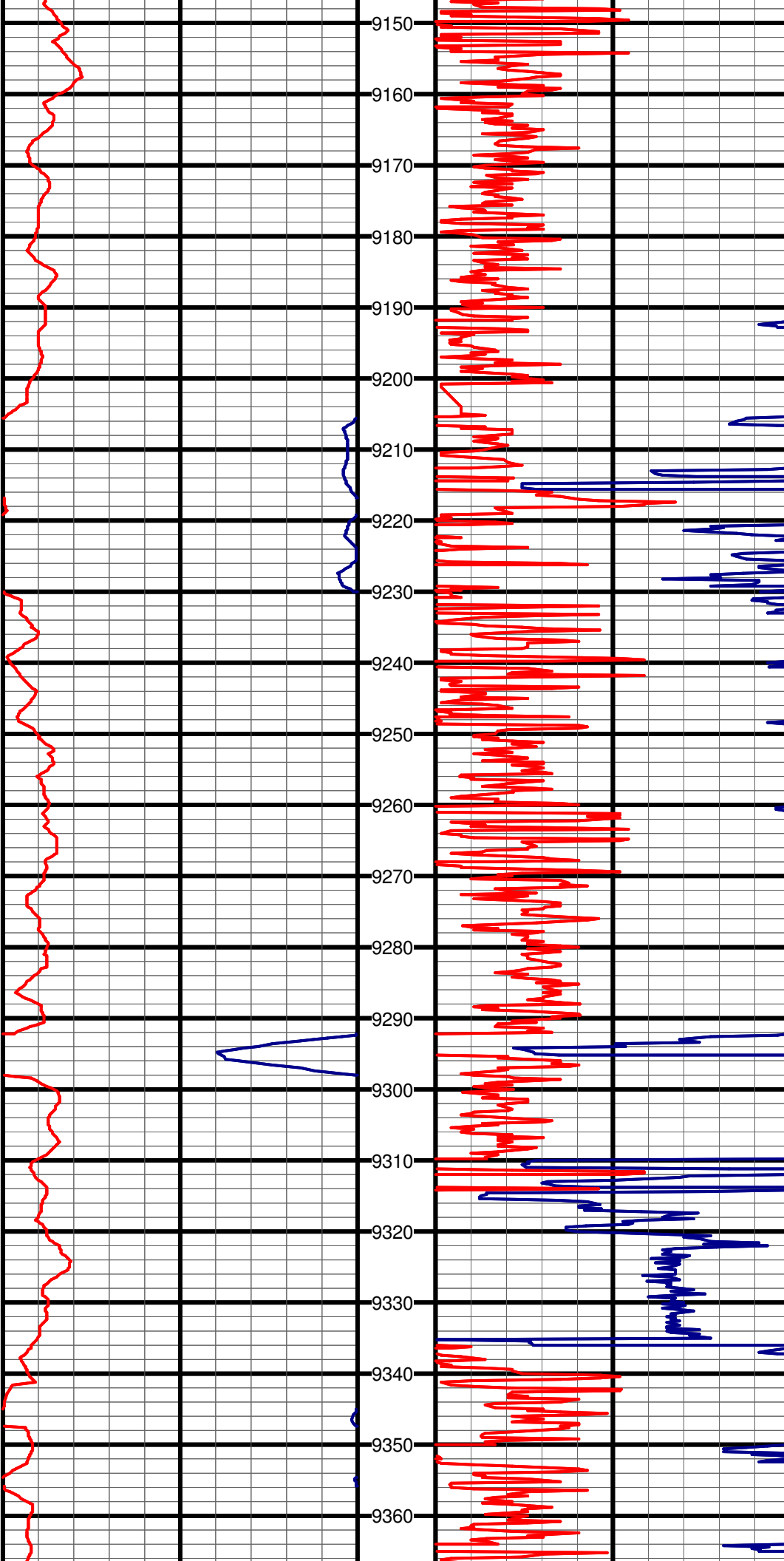
#55 MD:8773.0 TVD:7343.0 I:93.4 A:82.6 VS:986.9

#56 MD:8867.0 TVD:7338.3 I:92.3 A:82.2 VS:1080.8



#57 MD:8962.0 TVD:7336.0 I:90.5 A:81.2 VS:1175.7

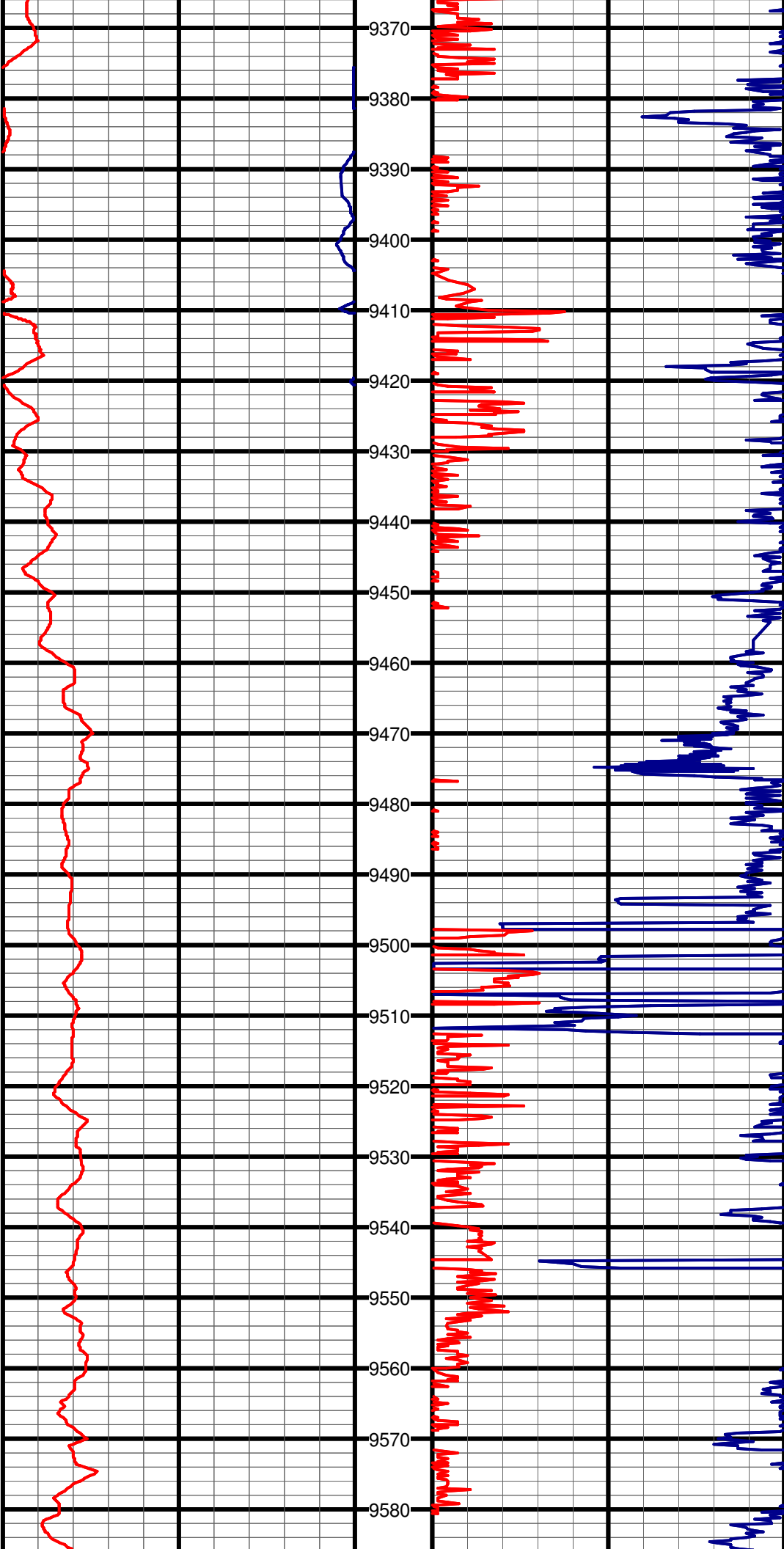
#58 MD:9057.0 TVD:7334.9 I:90.9 A:81.4 VS:1270.6



#59 MD:9151.0 TVD:7334.0 I:90.2 A:83.2 VS:1364.5

#60 MD:9246.0 TVD:7334.5 I:89.1 A:82.2 VS:1459.5

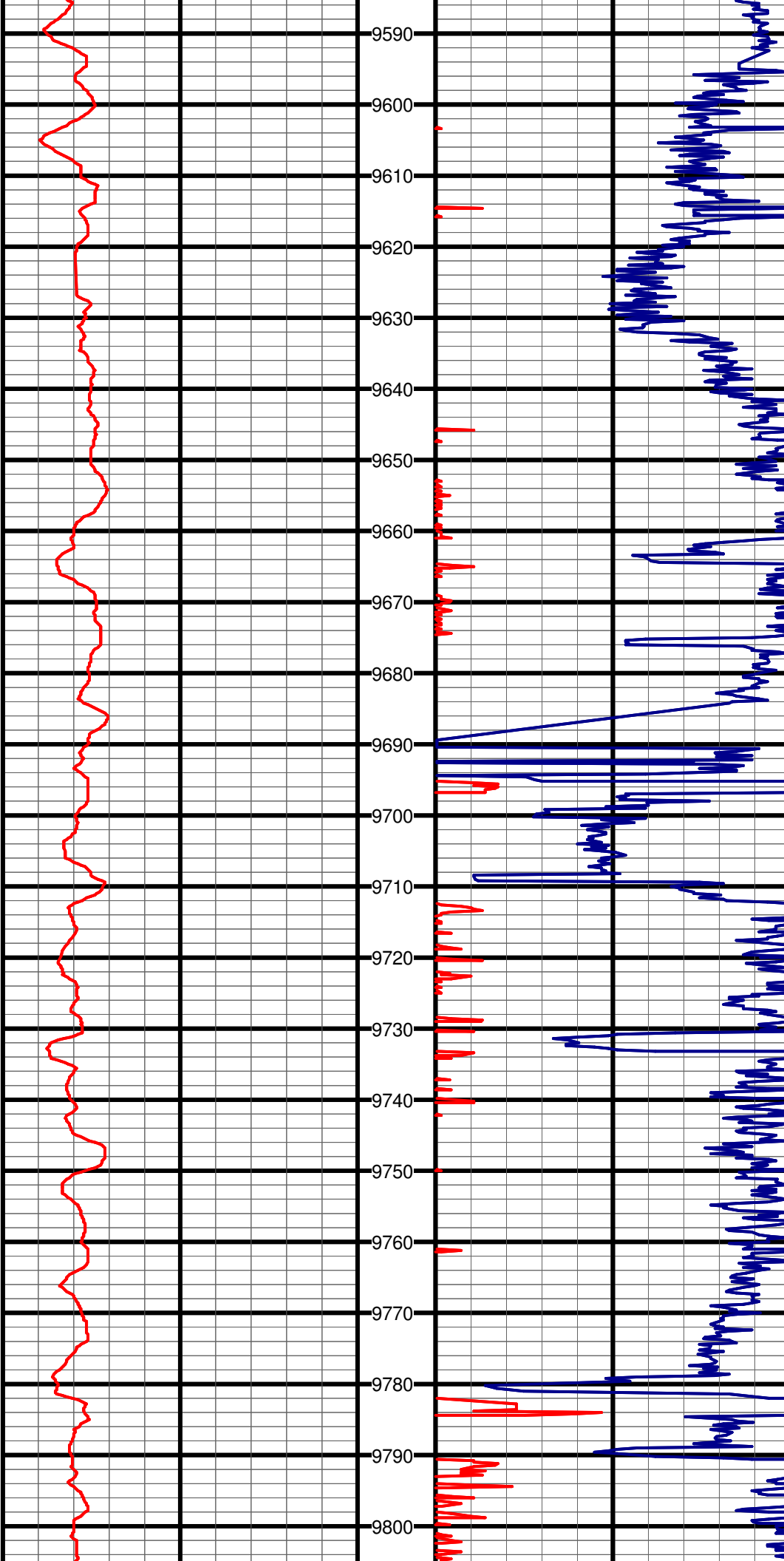
#61 MD:9350.0 TVD:7335.0 I:90.4 A:85.5 VS:1563.5



#62 MD:9433.0 TVD:7335.9 I:88.3 A:83.6 VS:1646.5

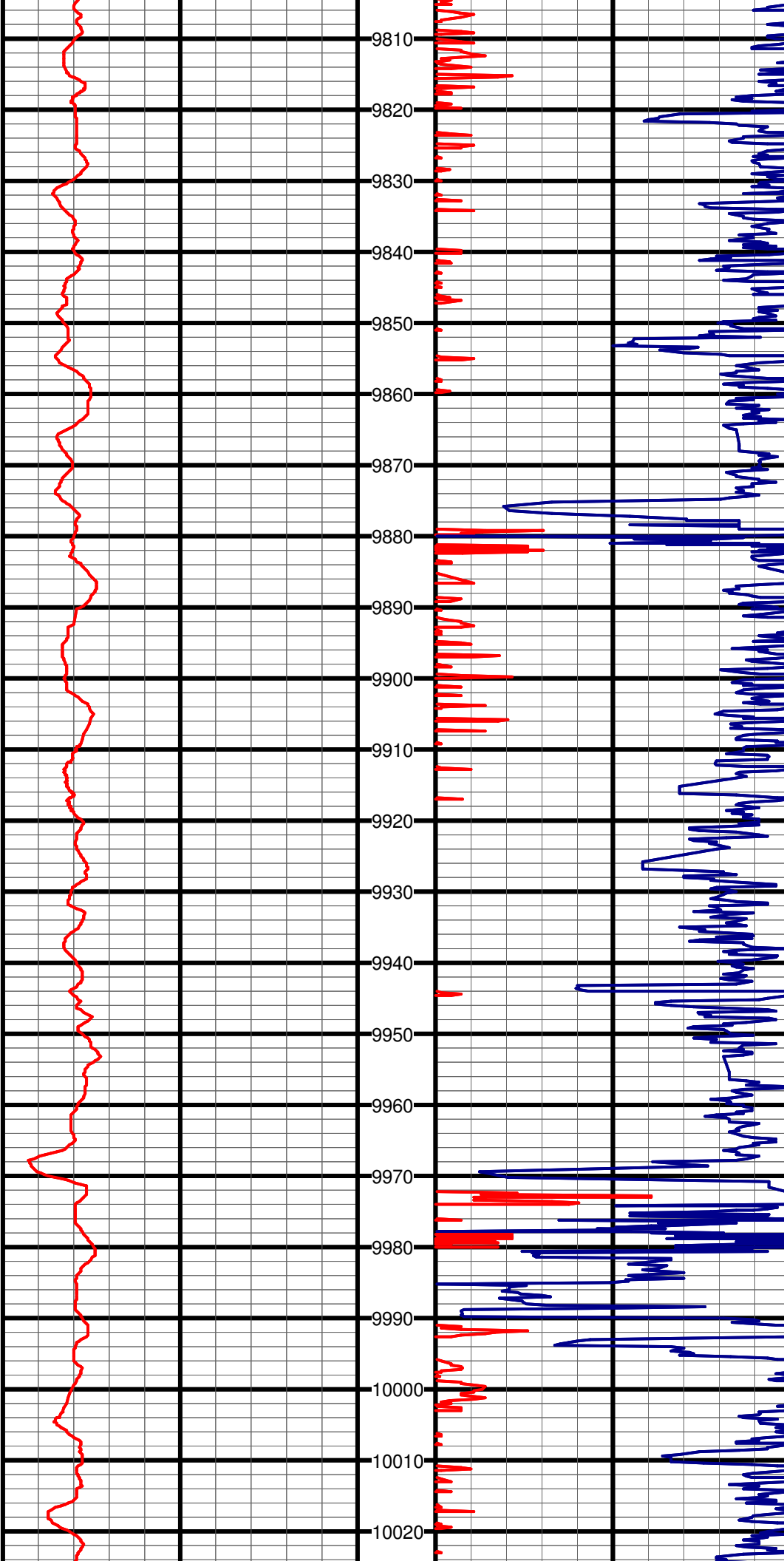
#63 MD:9528.0 TVD:7338.3 I:88.8 A:83.2 VS:1741.4





#64 MD:9623.0 TVD:7340.1 I:89.1 A:83.2 VS:1836.4

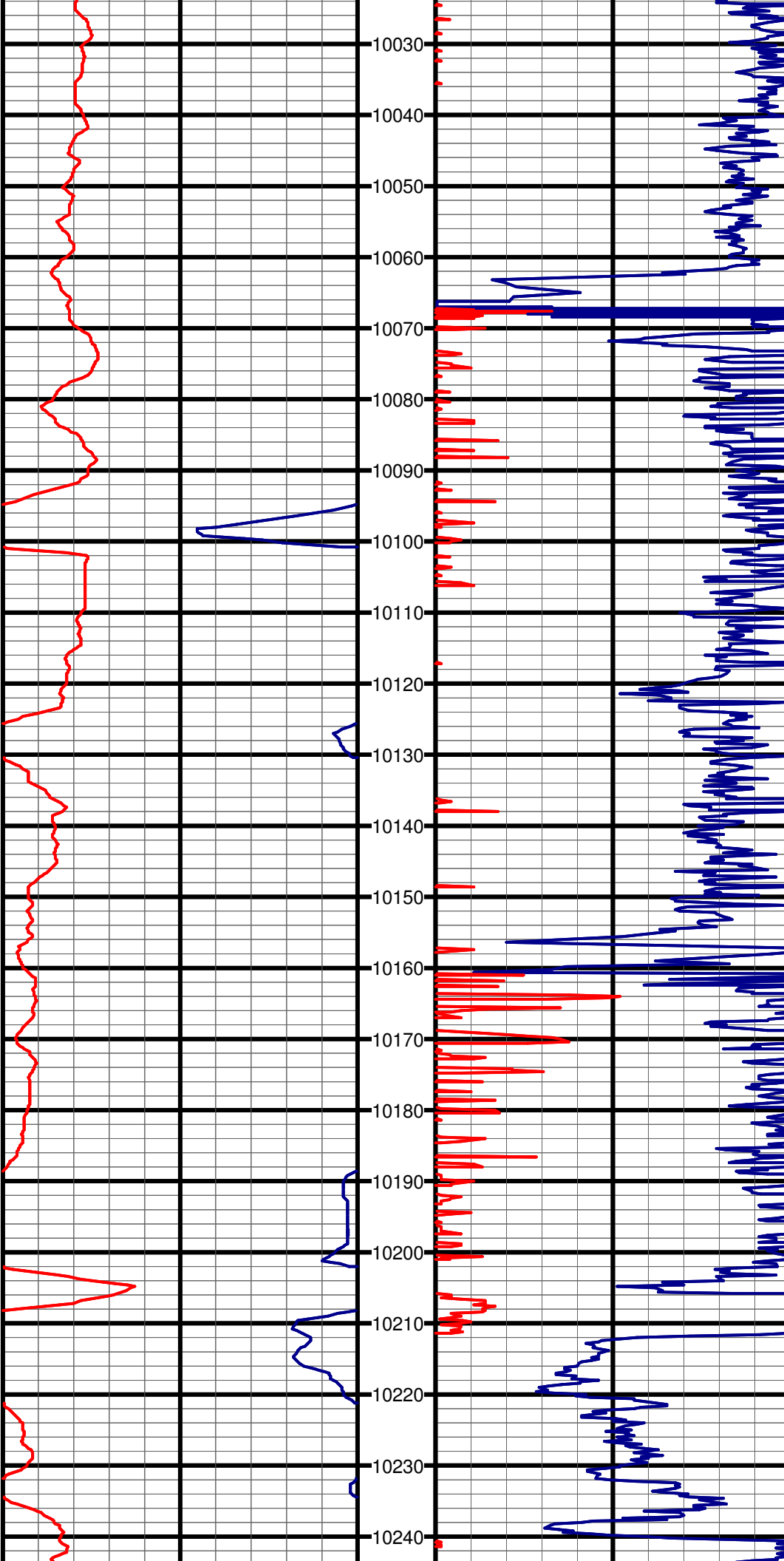
#65 MD:9717.0 TVD:7342.0 I:88.6 A:84.9 VS:1930.4



#66 MD:9811.0 TVD:7344.0 I:88.9 A:84.8 VS:2024.4

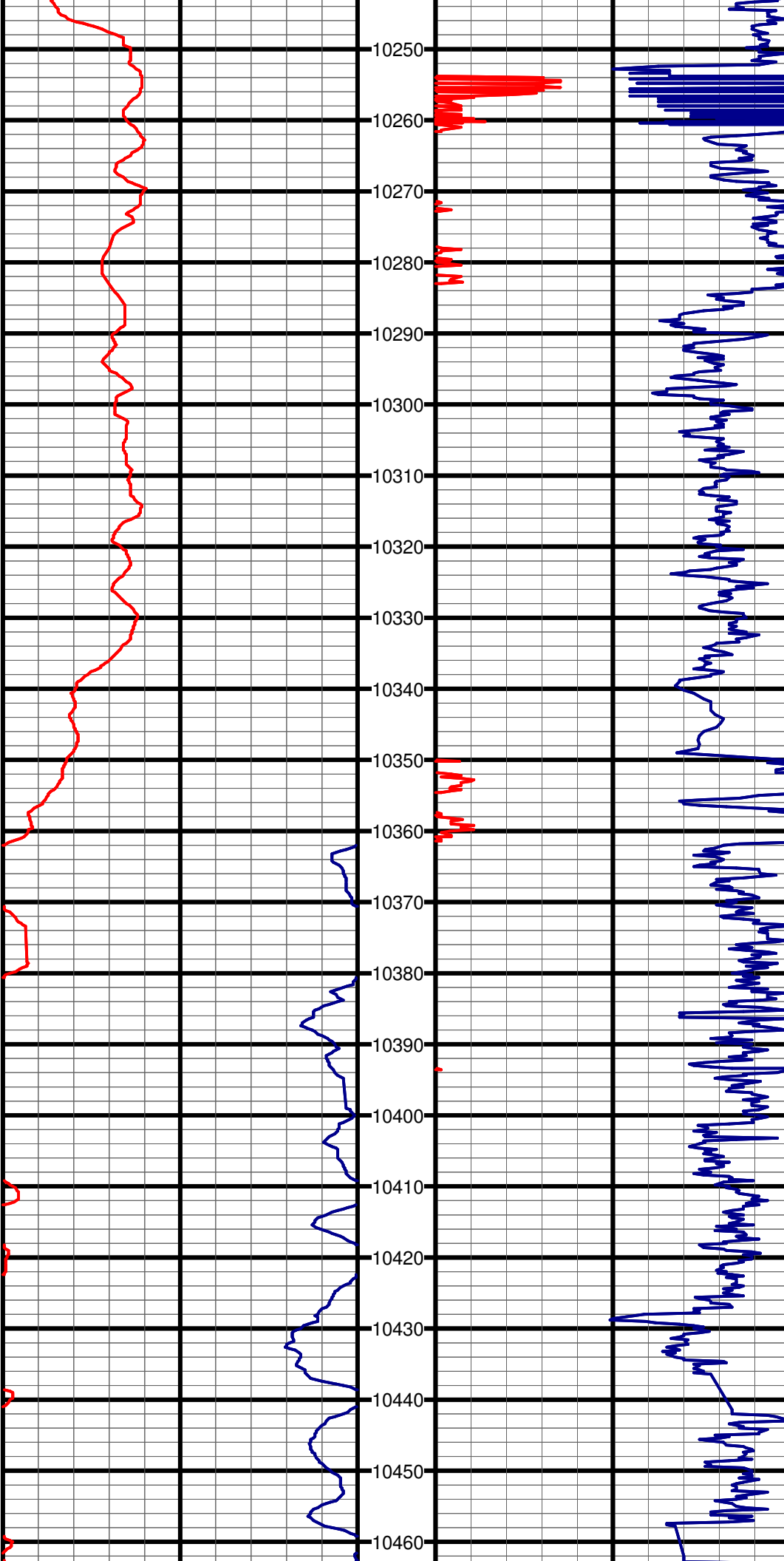
#67 MD:9906.0 TVD:7345.6 I:89.2 A:84.3 VS:2119.3

#68 MD:10000.0 TVD:7348.0 I:87.9 A:84.8 VS:2213.3



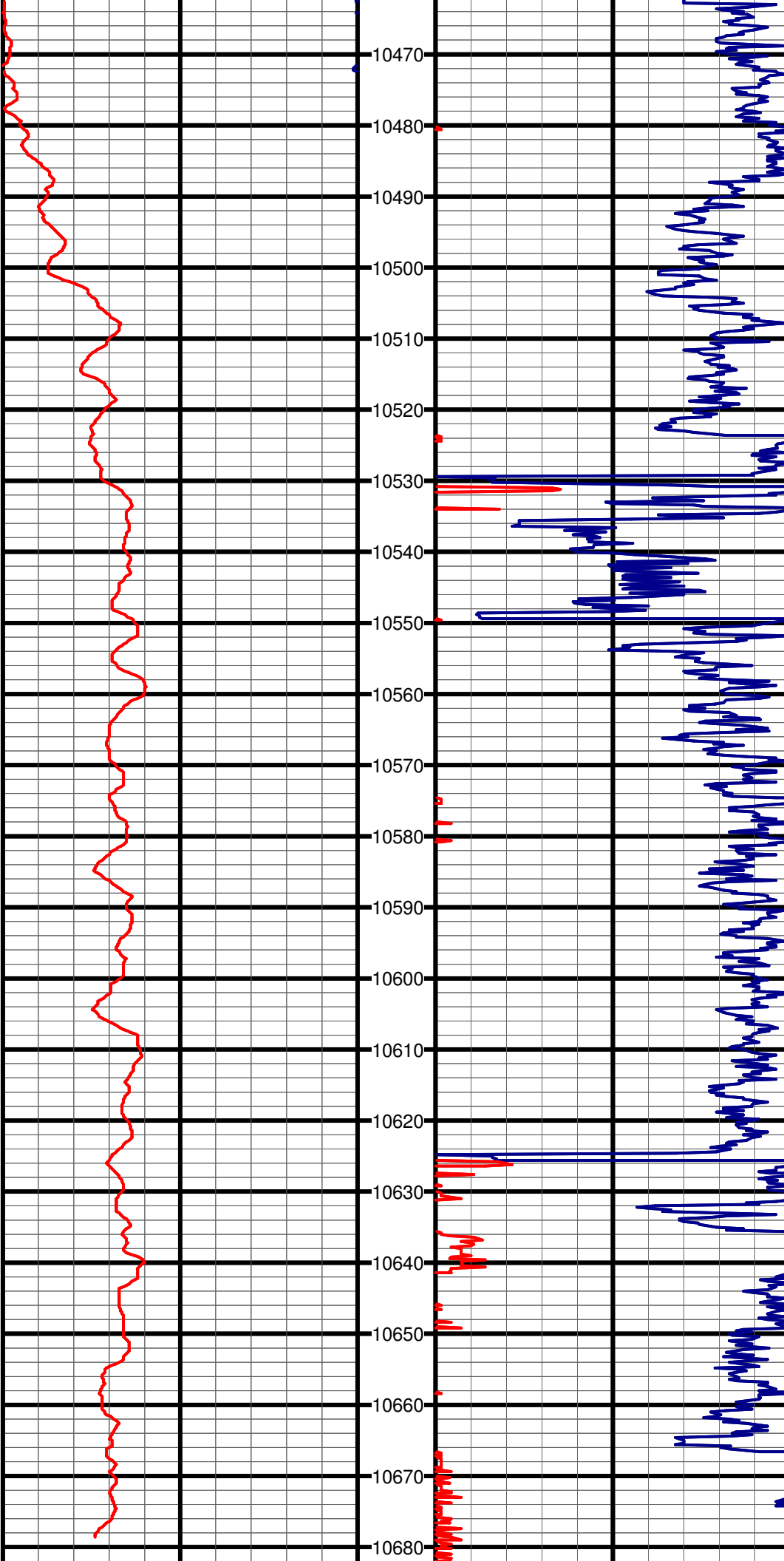
#69 MD:10093.0 TVD:7351.3 I:88.0 A:84.7 VS:2306.2

#70 MD:10187.0 TVD:7353.8 I:88.9 A:84.5 VS:2400.2



#71 MD:10281.0 TVD:7356.0 I:88.5 A:83.4 VS:2494.2

#72 MD:10375.0 TVD:7358.1 I:88.9 A:85.0 VS:2588.1



#73 MD:10468.0 TVD:7359.1 I:89.9 A:87.5 VS:2681.0

#74 MD:10563.0 TVD:7360.3 I:88.6 A:85.8 VS:2775.9

#75 MD:10657.0 TVD:7362.2 I:89.1 A:86.1 VS:2869.8

