

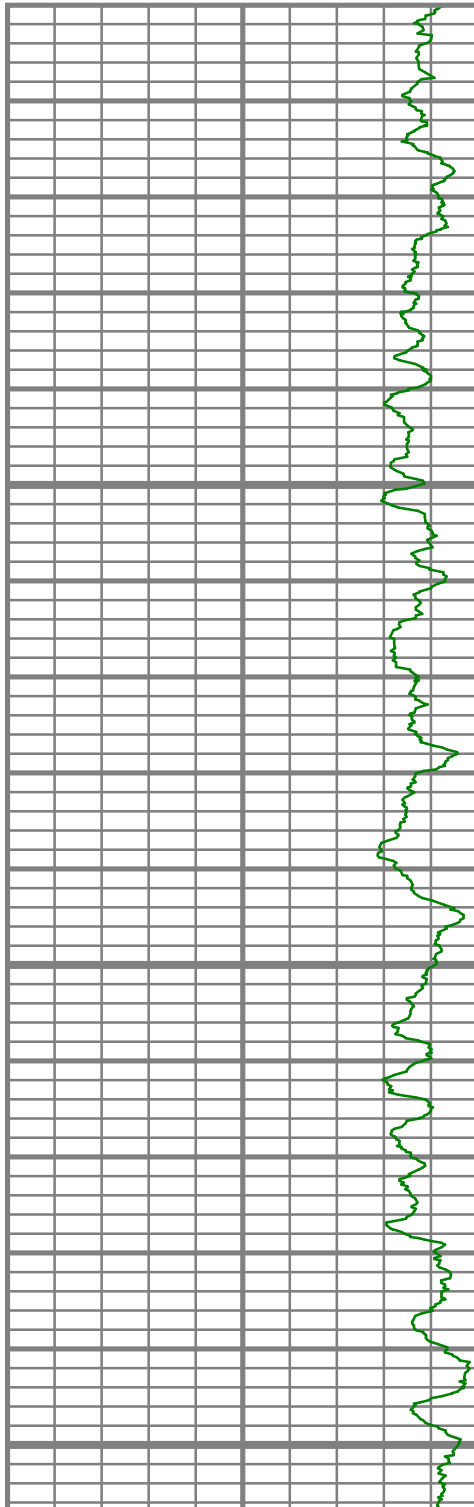
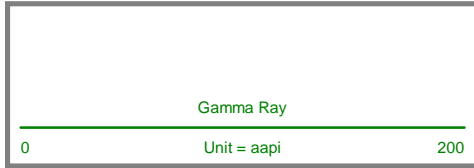


COMPANY : STONE ENERGY
WELL : LANTZ-MILLS UNIT 2 #3H
FIELD : BUFFALO RUN

Log as of: 6/16/2010 10:06:39
Eastern Standard Time

Attention :
Copy :

All interpretations are opinions based on inferences from electrical or other measurements and we cannot, and do not guarantee the accuracy or correctness of any interpretations, and we shall not, except in the case of gross or willful negligence on our part, be liable or responsible for any loss, costs, damages or expenses incurred or sustained by anyone resulting from any interpretation made by any of our officers, agents or employees. These interpretations are also subject to our general terms and conditions as set out in our current price schedule.

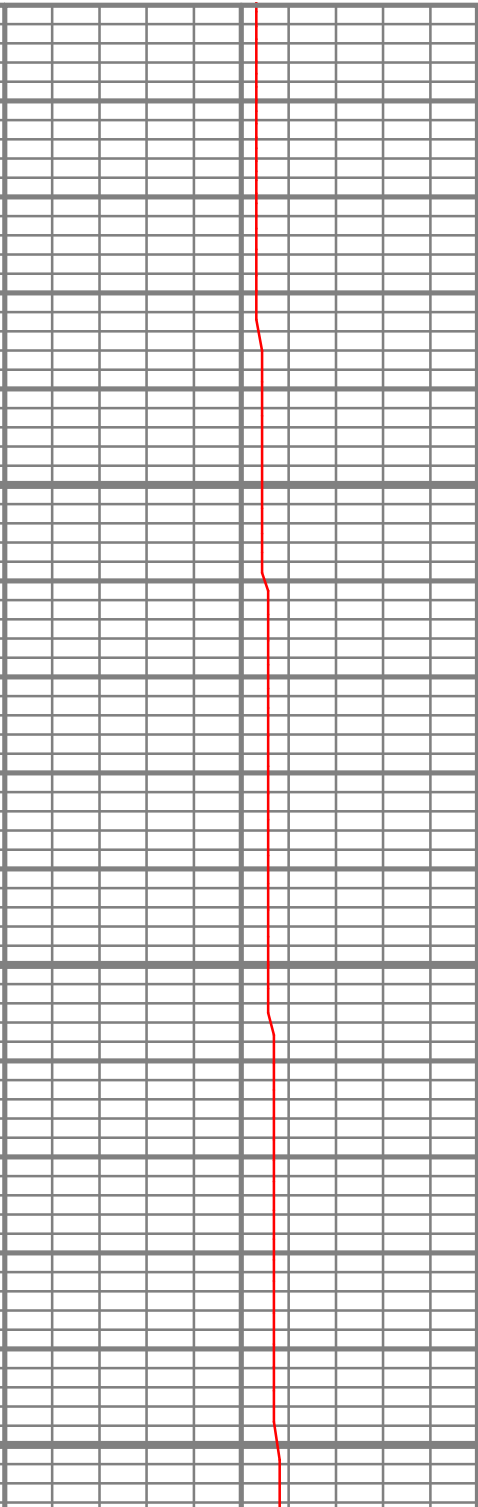
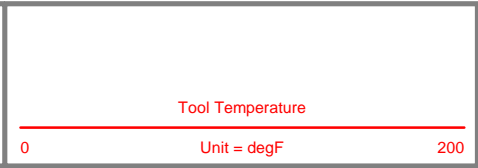
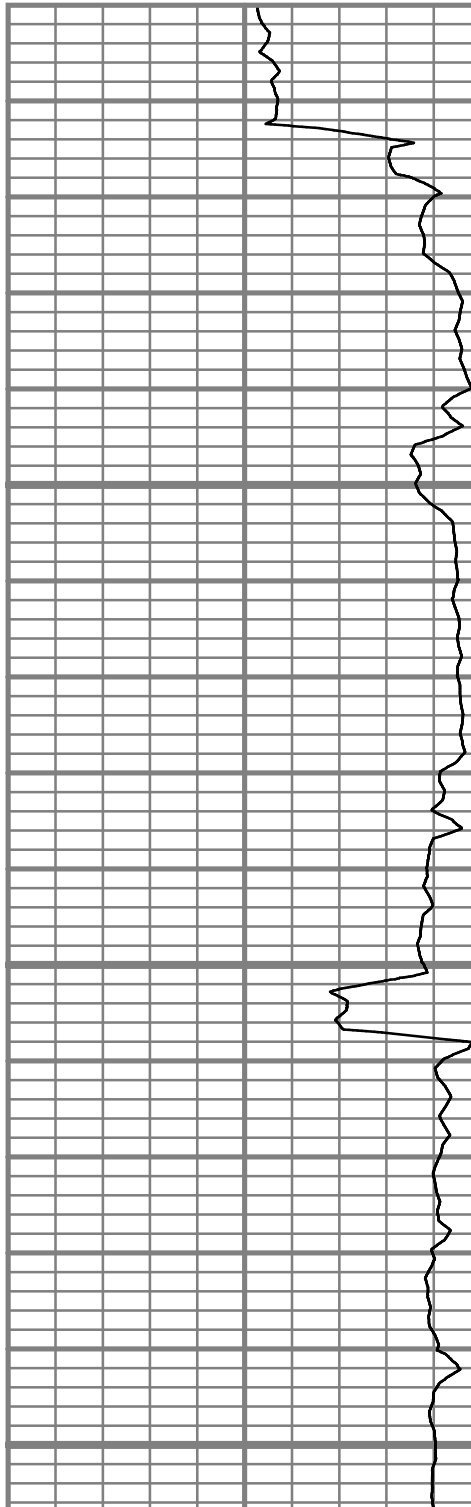
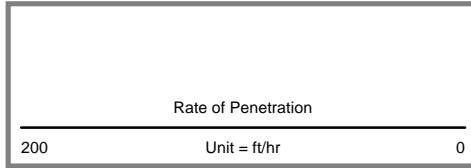


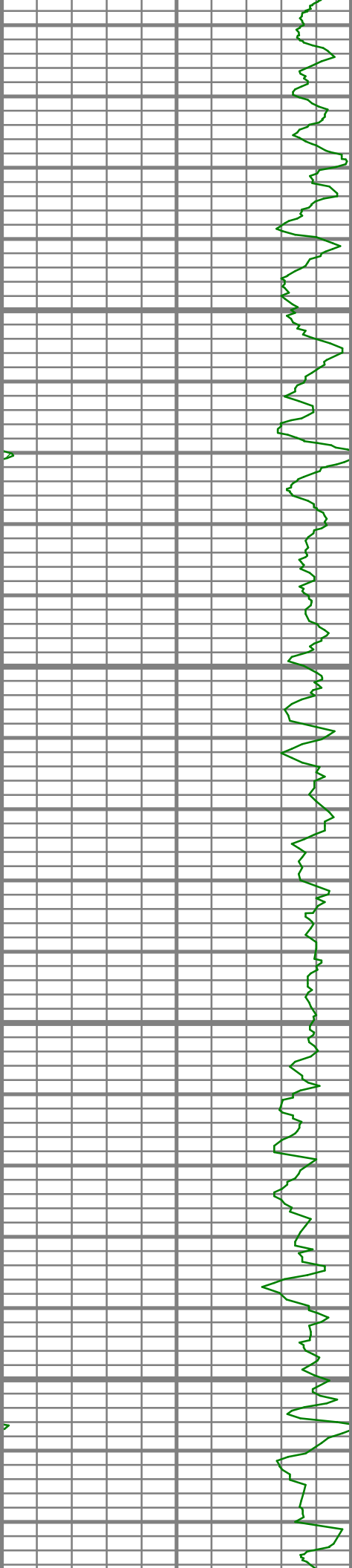
TRUE VERTICAL DEPTH
1:240 (ft)

5700

5750

5800



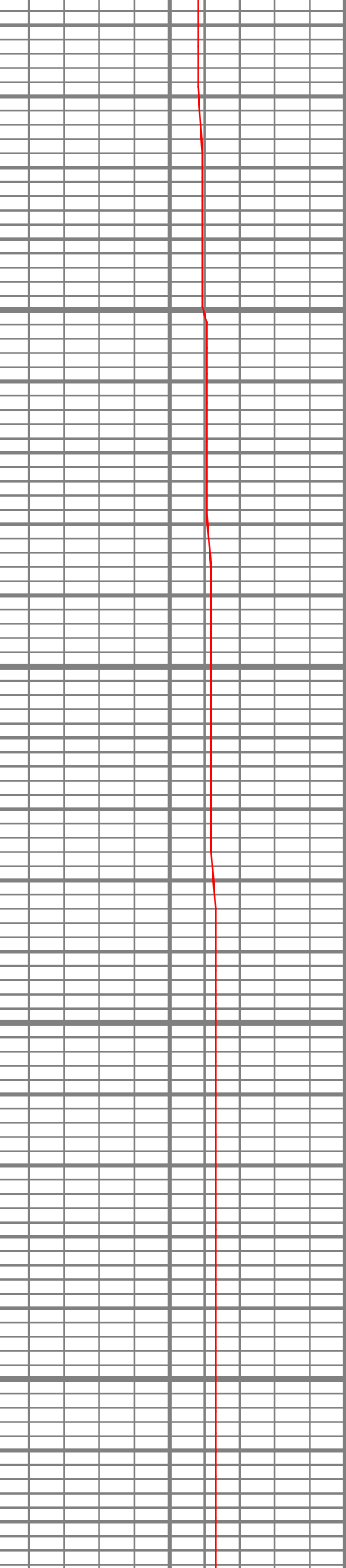
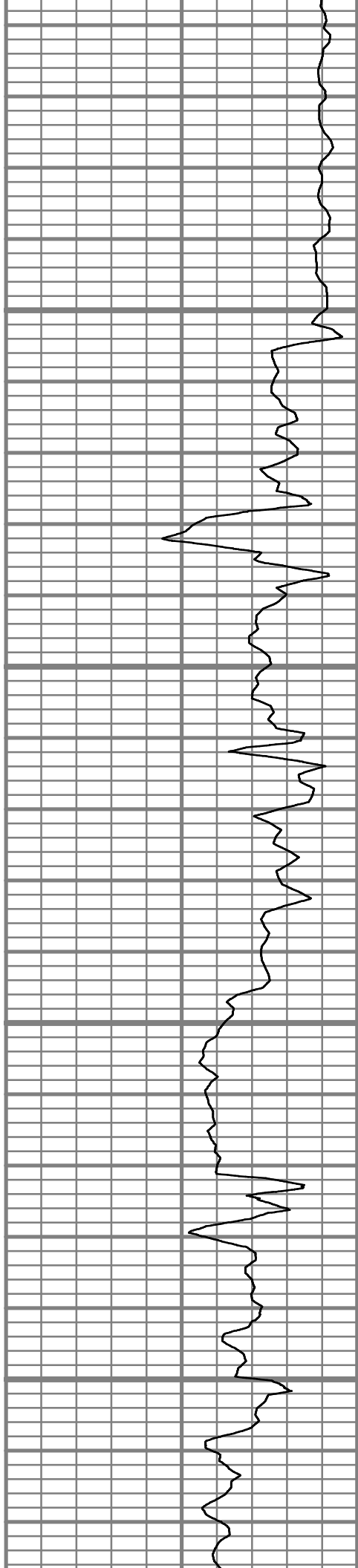


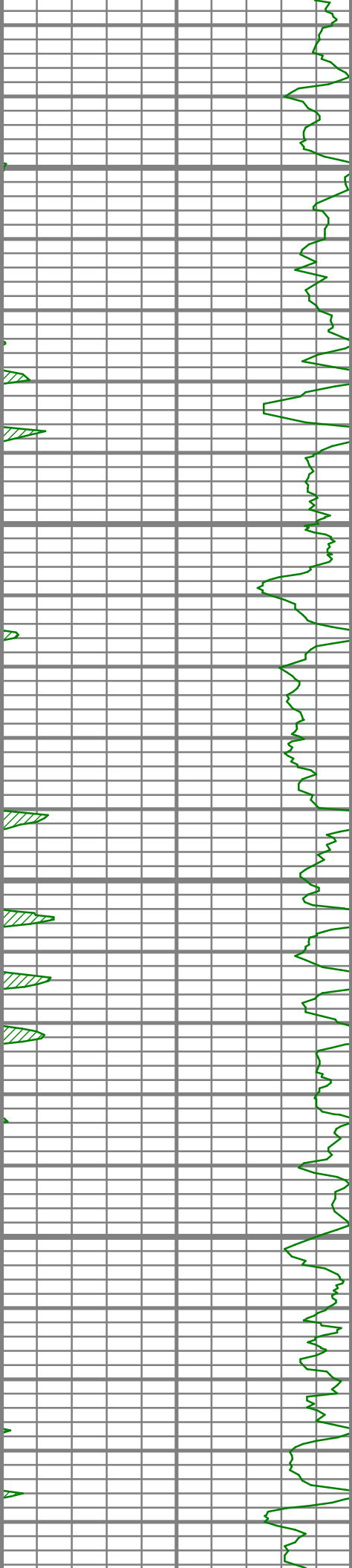
5850

5900

5950

6000



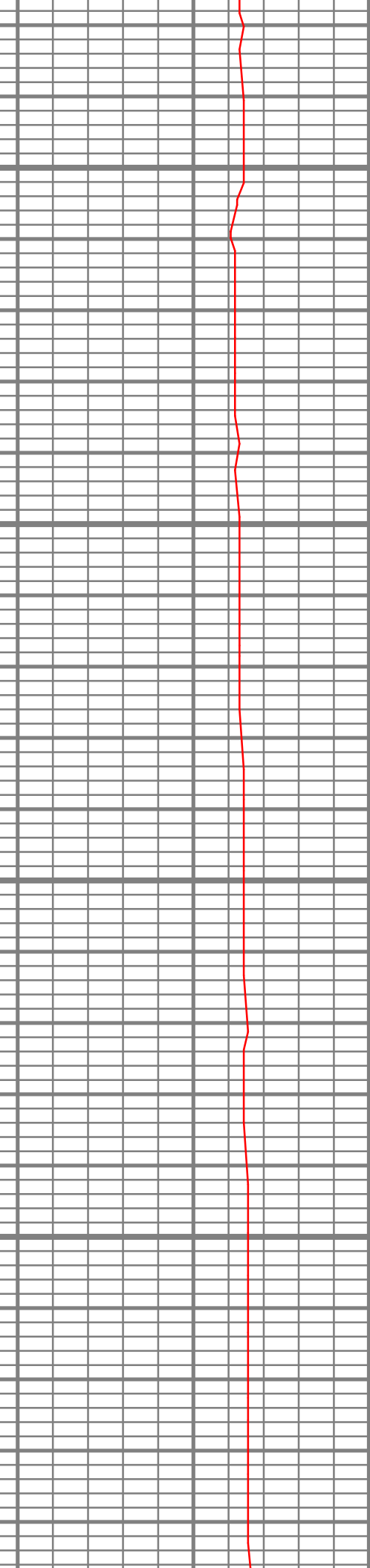
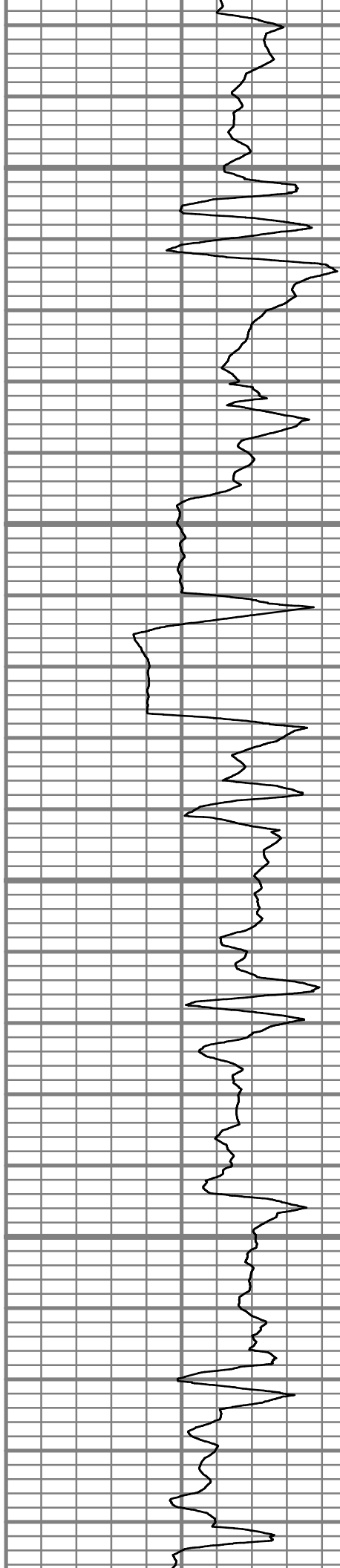


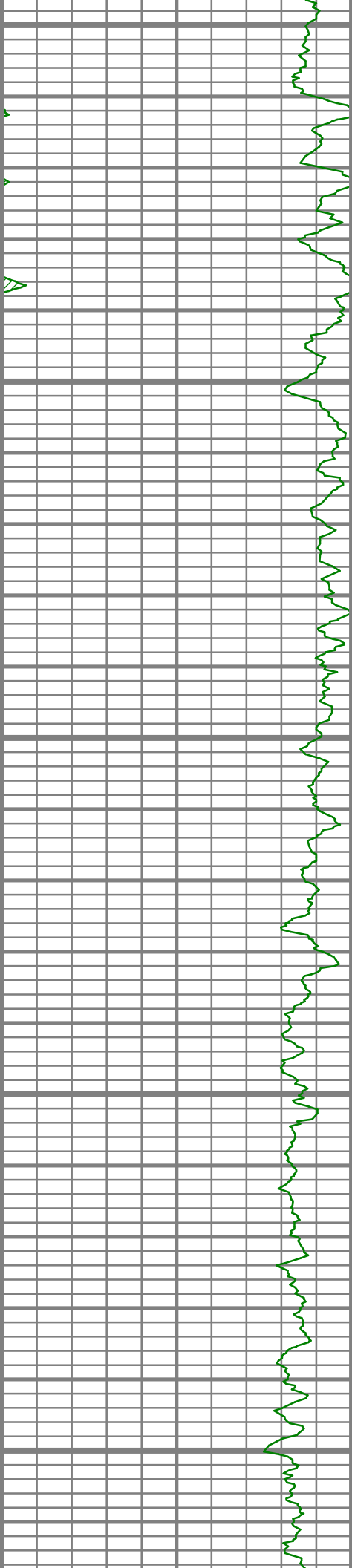
6050

6100

6150

6200





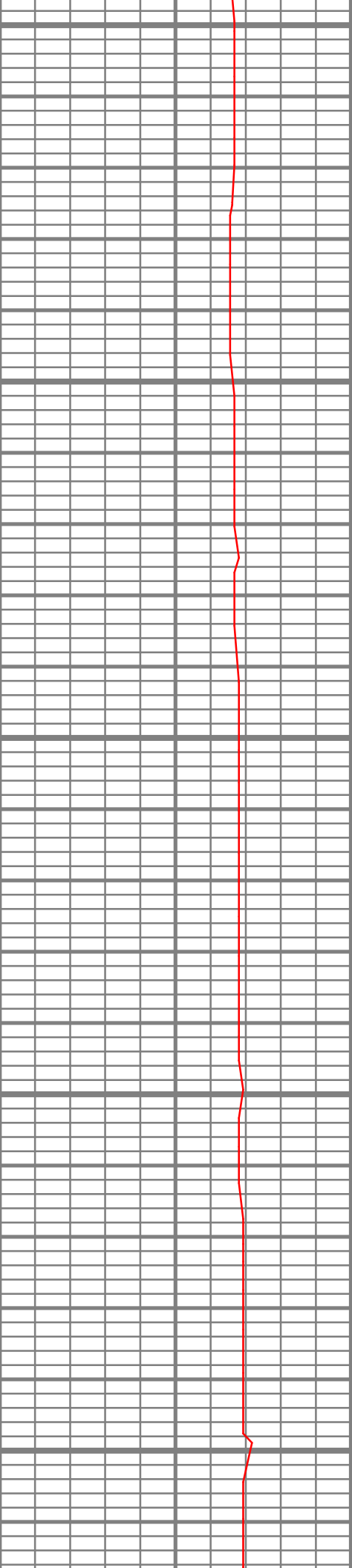
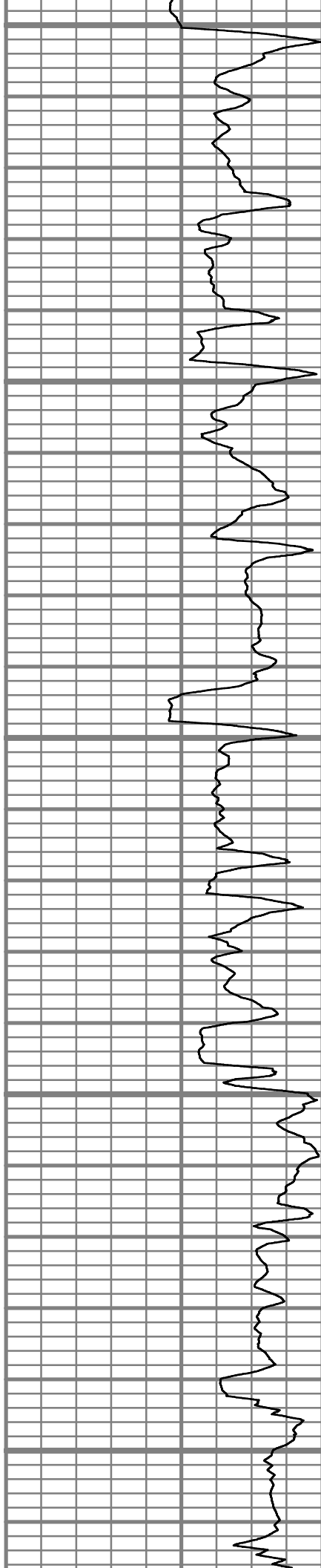
6250

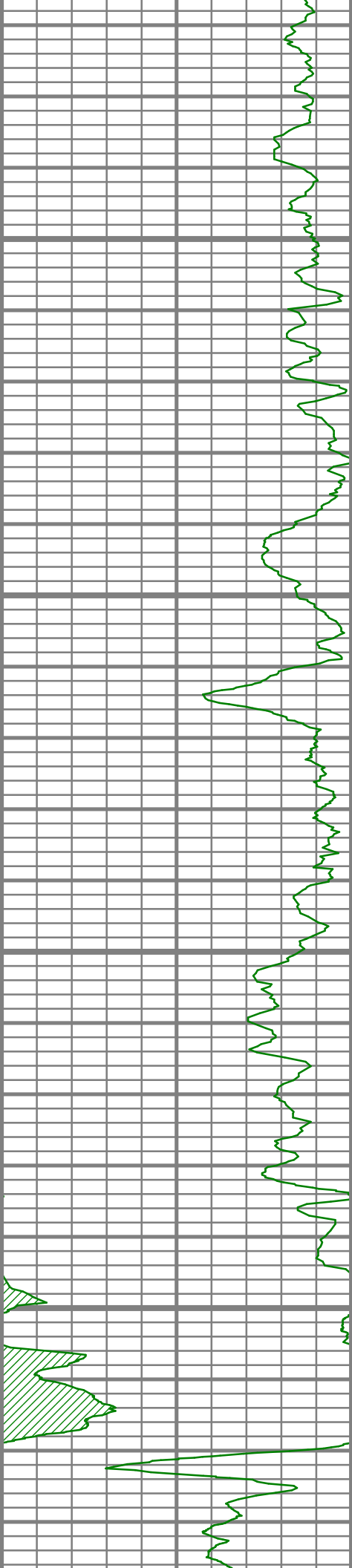
6300

6350

6400

6450



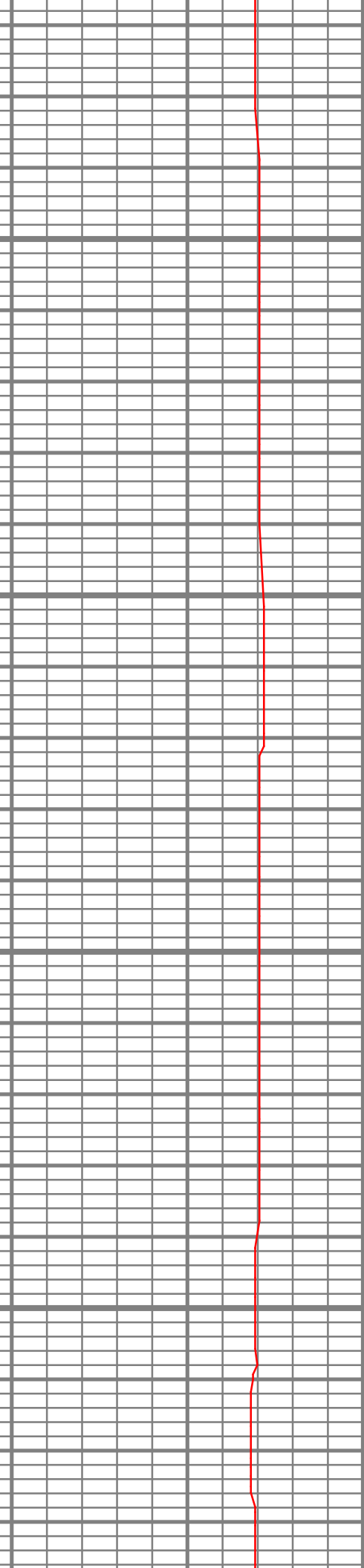
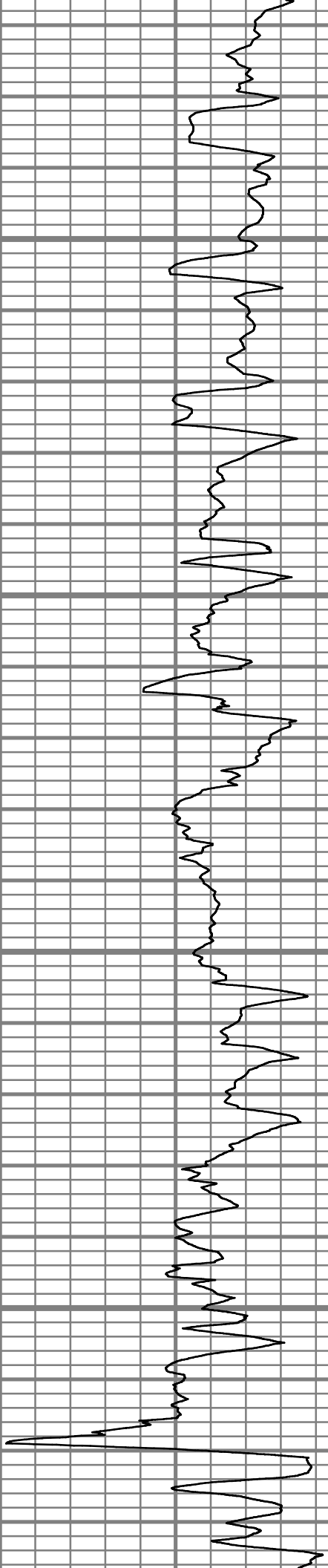


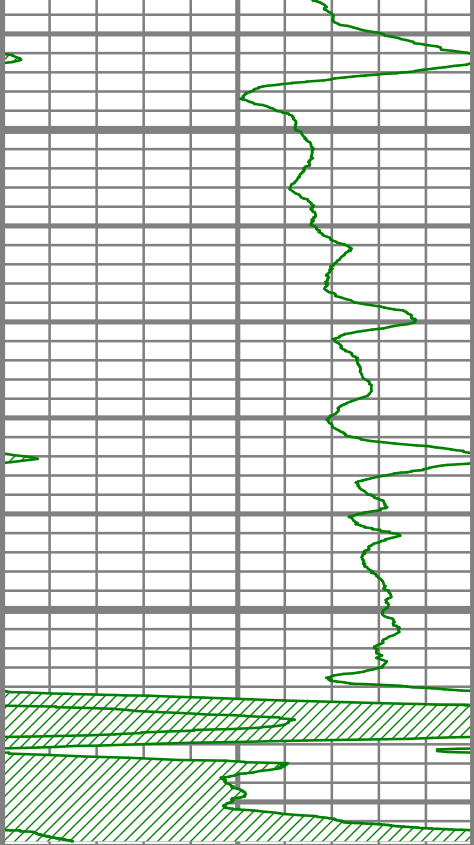
6500

6550

6600

6650



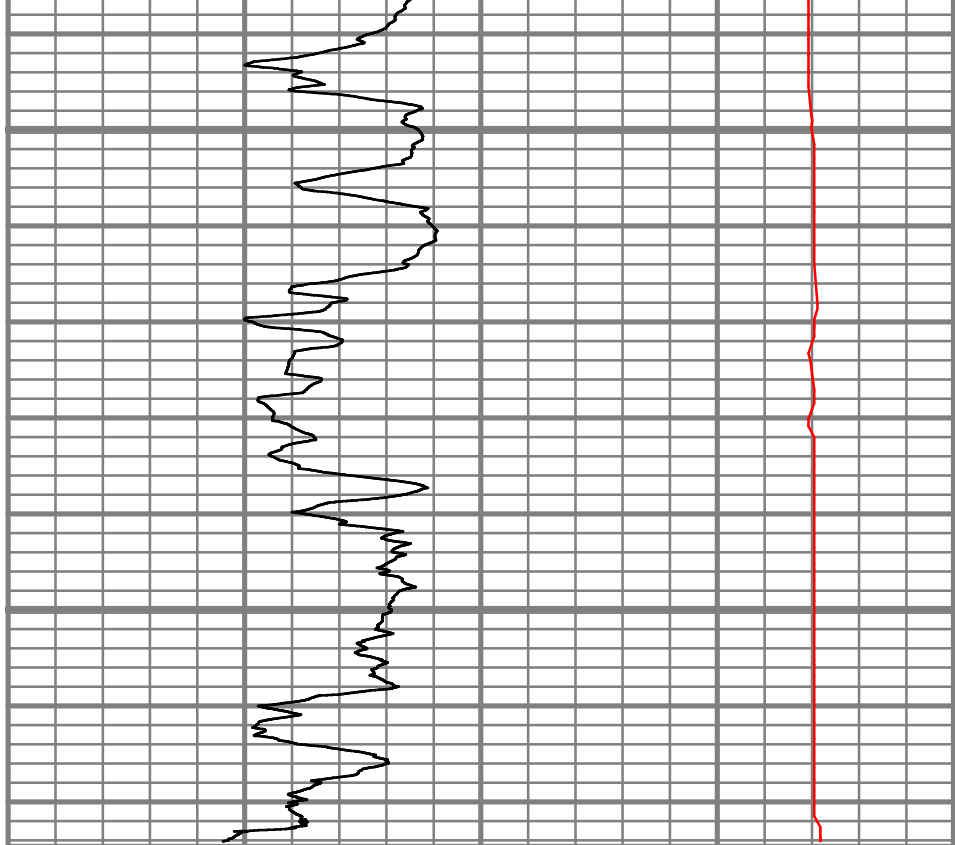


Gamma Ray
 Unit = aapi
 400 600

6700

6750

TRUE VERTICAL DEPTH
 1,240 (ft)



Rate of Penetration
 Unit = ft/hr
 200 0

Tool Temperature
 Unit = degF
 0 200



ROP
 TEMPERATURE

5" = 100'

FEET TVD