

# Geolog

(Scale: 5"=100' (10'))

MWD SERVICES, LLC

Company: GRENADIER ENERGY PARTNERS, LLC

State: WEST VIRGINIA

Well: KENNETH SHREVE 1H

County: WETZEL

Field: SHREVE, KENNETH & SONDRA

Country: USA

Well ID: 47-103-02557

Job Number: 10169

Location:

Operator 1: RICKY WILLIAMS

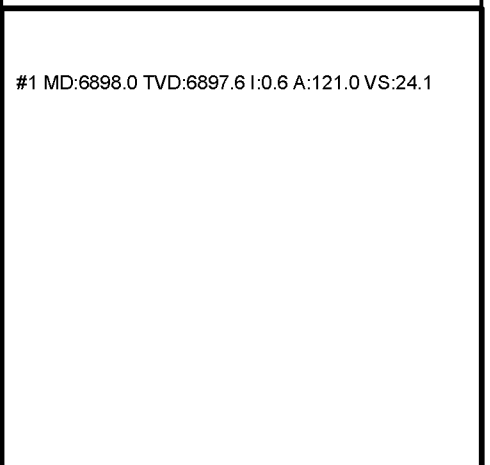
Operator 2: PAUL VIDRINE

Elev KB: 14'  
Elev DF: 13'  
Elev GL: 1,471'

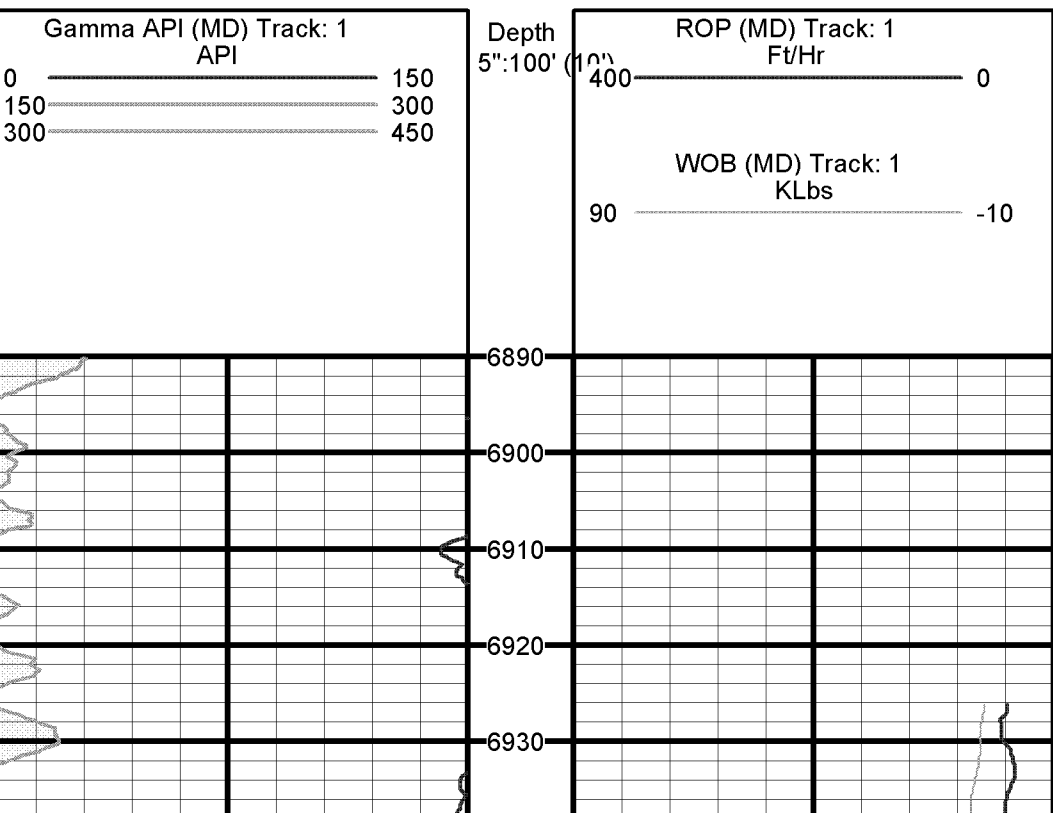
- Comment 1:
- Comment 2:
- Comment 3:
- Comment 4:
- Comment 5:

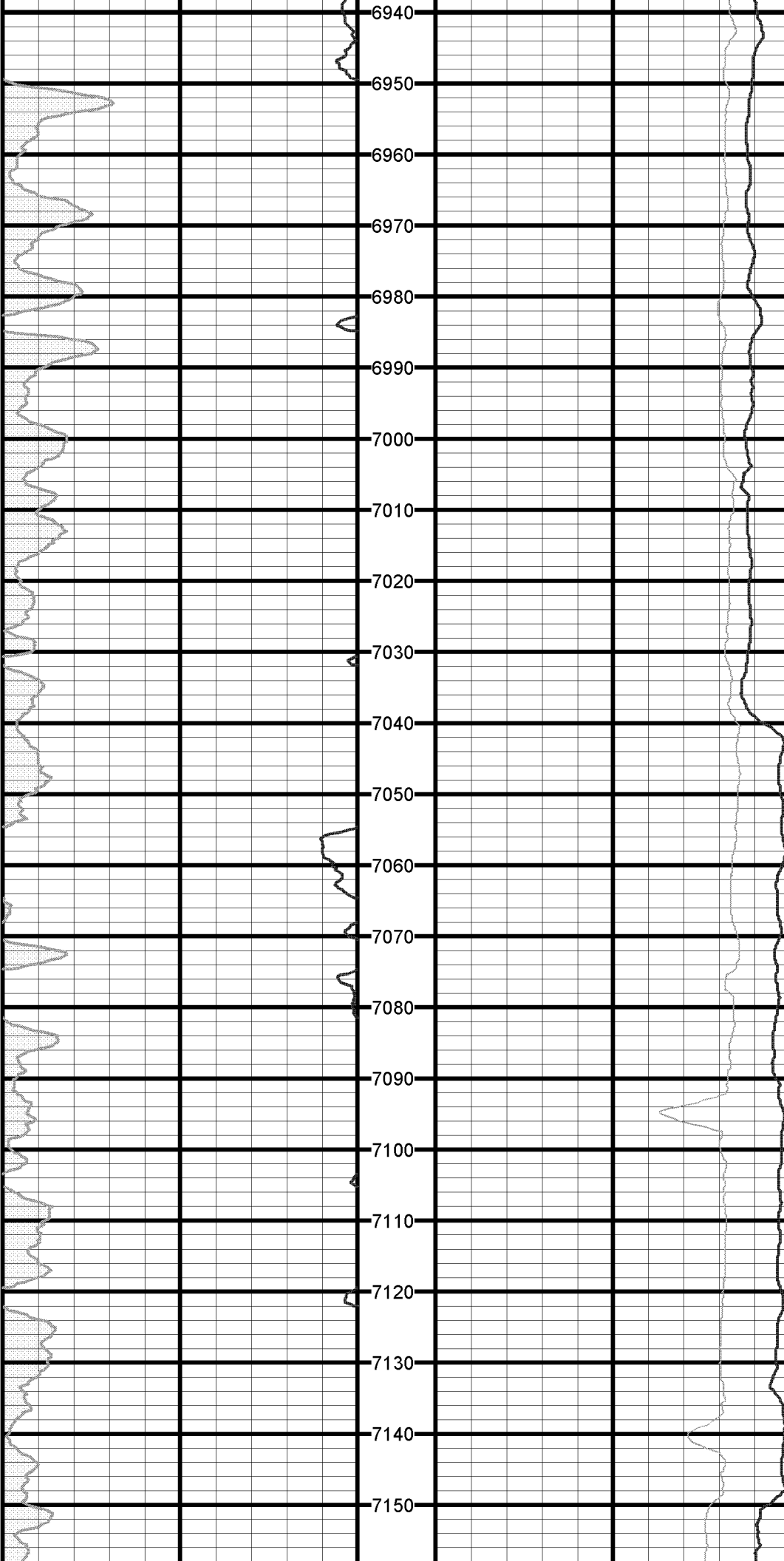
Hole Data				Casing Record			
Size	From	To	Size	From	To	Size	To
12.25"	0'	2,810'	8.625"	0'	2,810'		
7.875"	2,810'	11,763'	5.50"	0'	11,763'		

Tool Run Data		Run #1	Run #2	Run #3	Run #4	Run #5
Tool S/N	IDF17-03	IDF17-03	IDF17-03			
Cal Factor	6.25	6.25				
Gamma Offset	36'	36'				
Start Depth	6,925'	8,005'				
Start Date	08/02/2010	08/06/2010				
Start Time	0630 HRS	1900 HRS				
End Depth	8,005'	11,763'				
End Date	08/06/2010	08/12/2010				
End Time	1730 HRS	1800 HRS				



#1 MD:6898.0 TVD:6897.6 I:0.6 A:121.0 VS:24.1





#2 MD:6961.0 TVD:6960.6 I:0.6 A:122.5 VS:23.5

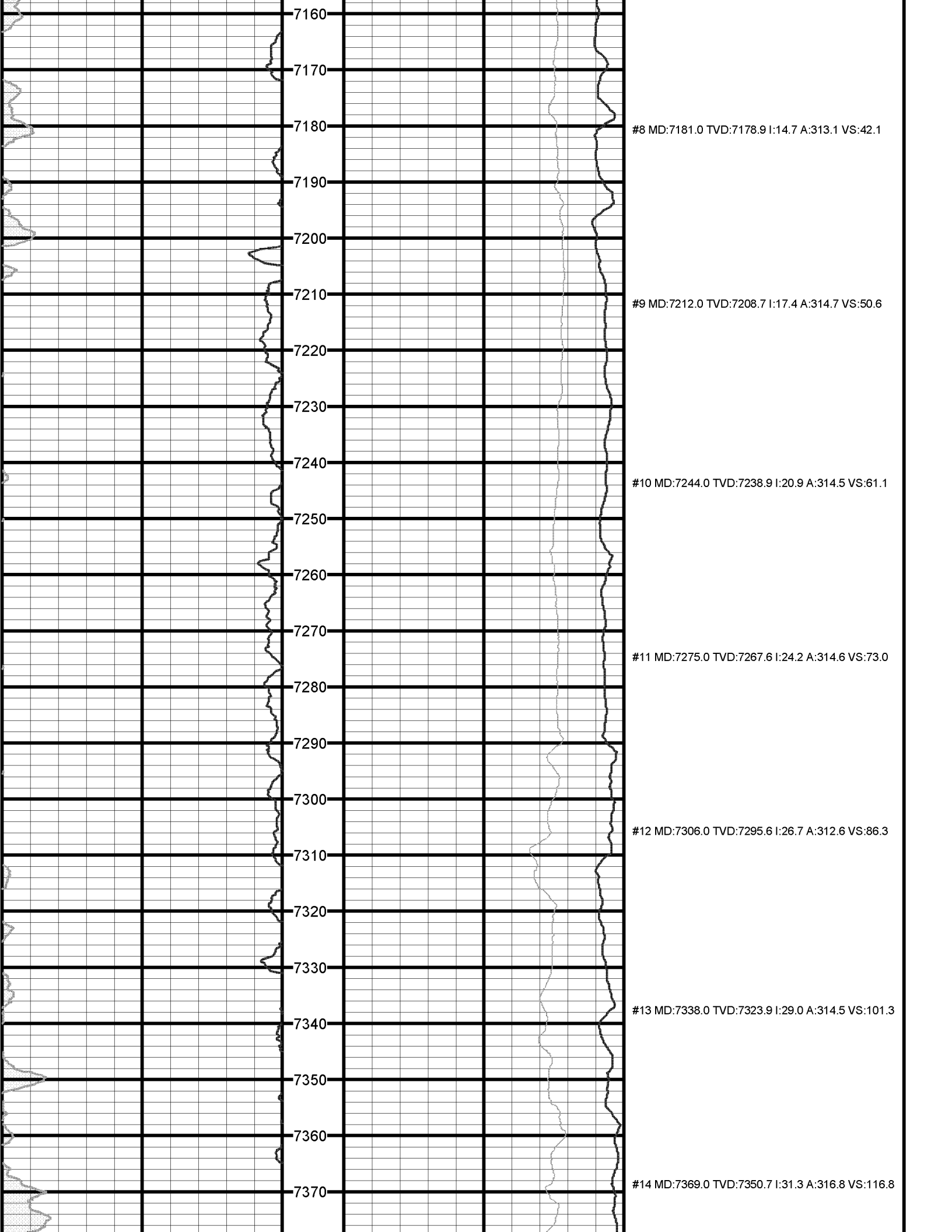
#3 MD:7024.0 TVD:7023.6 I:0.3 A:135.9 VS:23.0

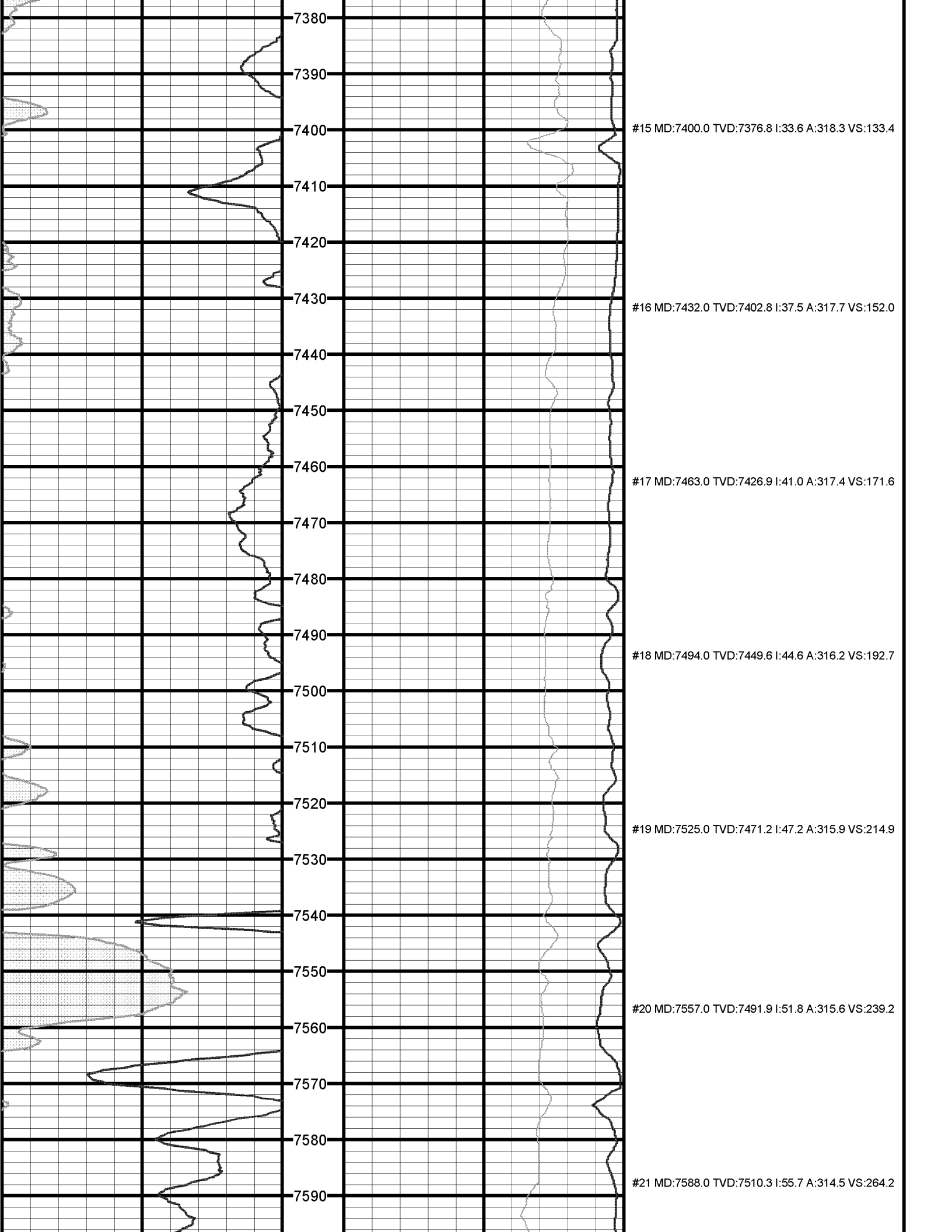
#4 MD:7055.0 TVD:7054.6 I:2.0 A:302.6 VS:23.5

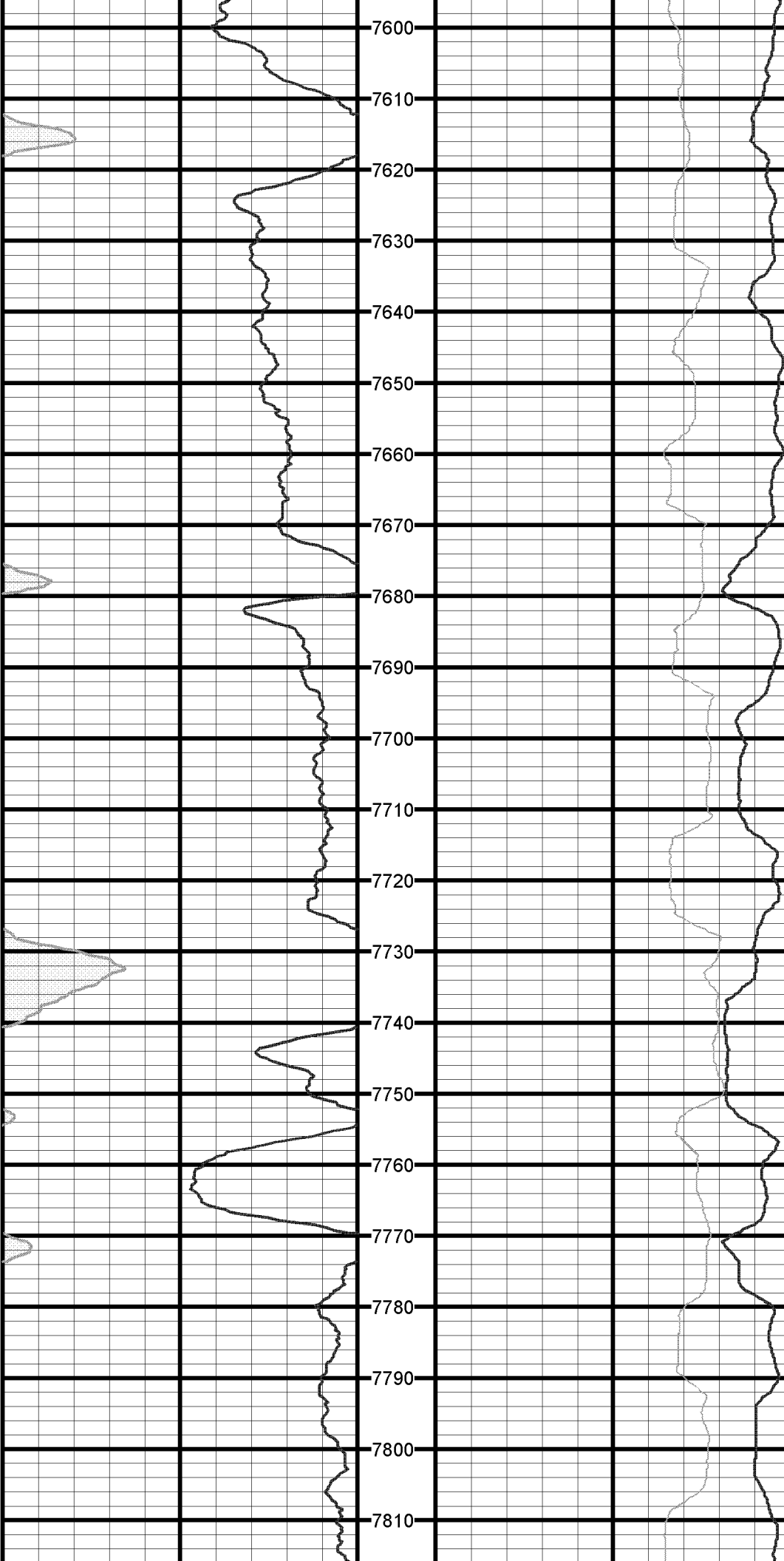
#5 MD:7086.0 TVD:7085.5 I:5.2 A:307.5 VS:25.4

#6 MD:7118.0 TVD:7117.3 I:8.8 A:310.2 VS:29.3

#7 MD:7149.0 TVD:7147.8 I:11.7 A:311.0 VS:34.8







#22 MD:7619.0 TVD:7526.8 I:59.9 A:313.9 VS:290.5

#23 MD:7650.0 TVD:7541.6 I:63.2 A:312.6 VS:317.7

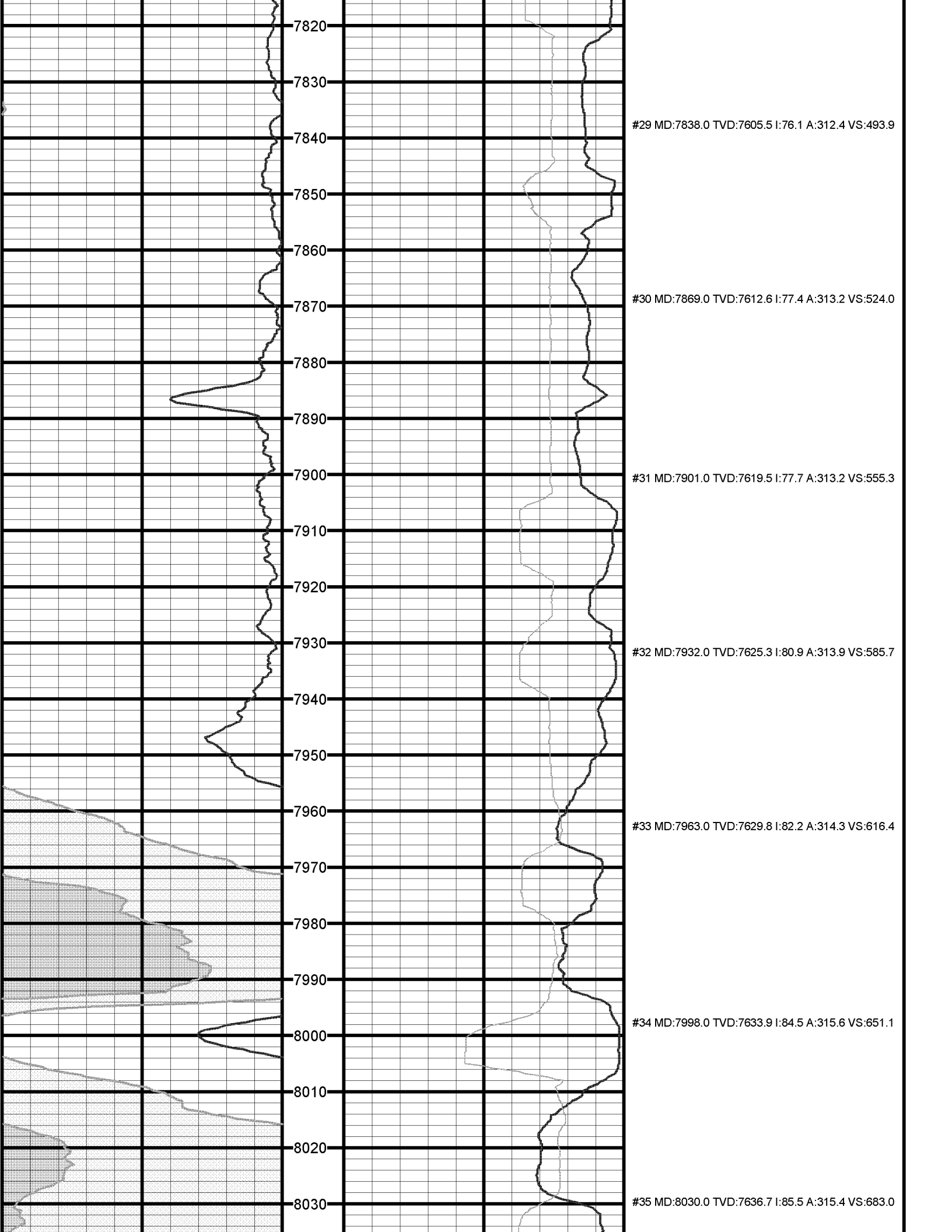
#24 MD:7682.0 TVD:7555.3 I:66.1 A:312.2 VS:346.6

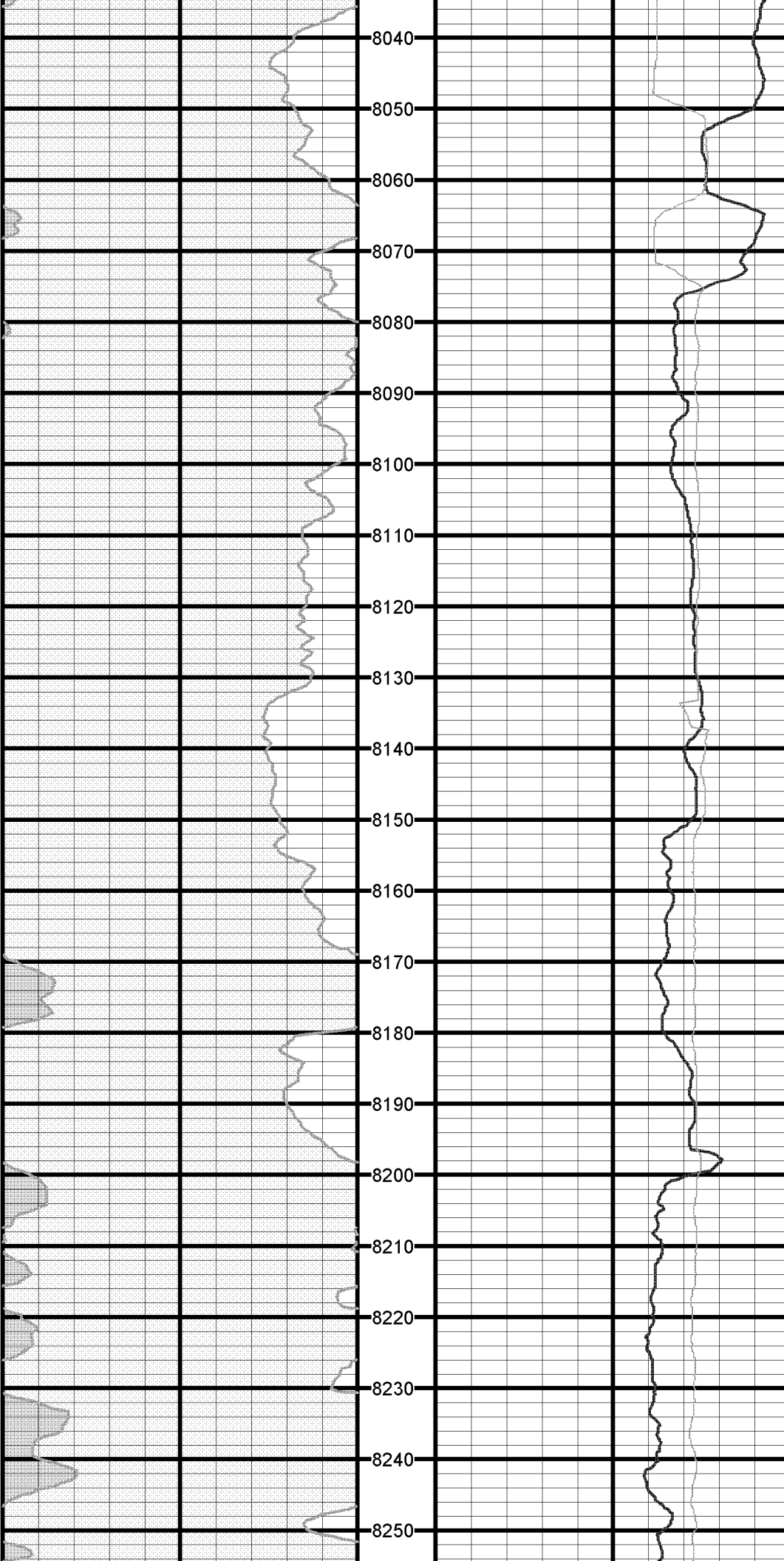
#25 MD:7713.0 TVD:7567.3 I:68.2 A:311.8 VS:375.1

#26 MD:7744.0 TVD:7578.2 I:70.4 A:311.4 VS:404.1

#27 MD:7776.0 TVD:7588.6 I:72.0 A:311.7 VS:434.3

#28 MD:7807.0 TVD:7597.6 I:74.2 A:312.2 VS:463.9

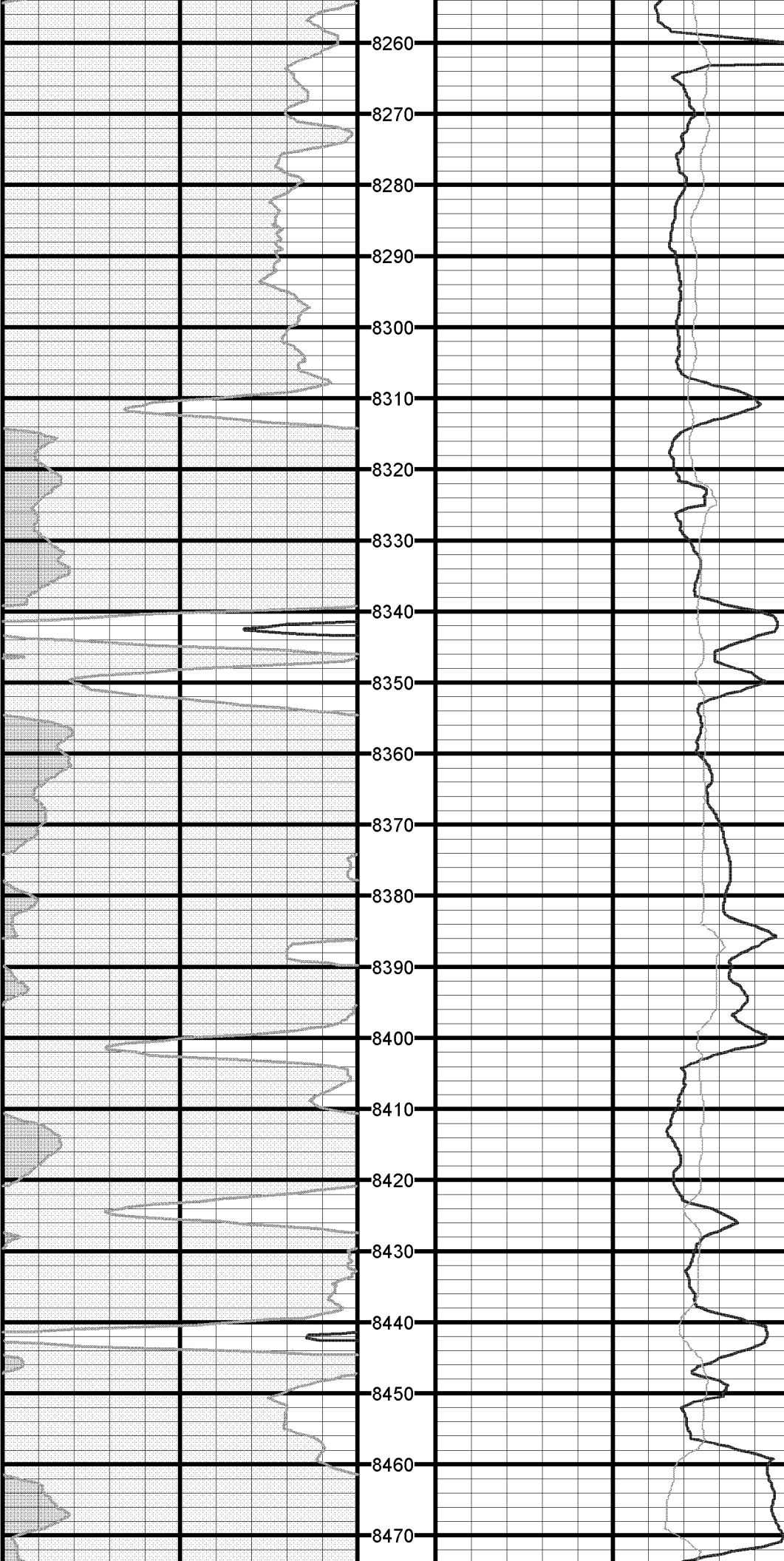




#36 MD:8092.0 TVD:7640.1 I:88.1 A:314.6 VS:744.9

#37 MD:8155.0 TVD:7641.9 I:88.6 A:315.1 VS:807.9

#38 MD:8218.0 TVD:7643.4 I:88.8 A:314.3 VS:870.9



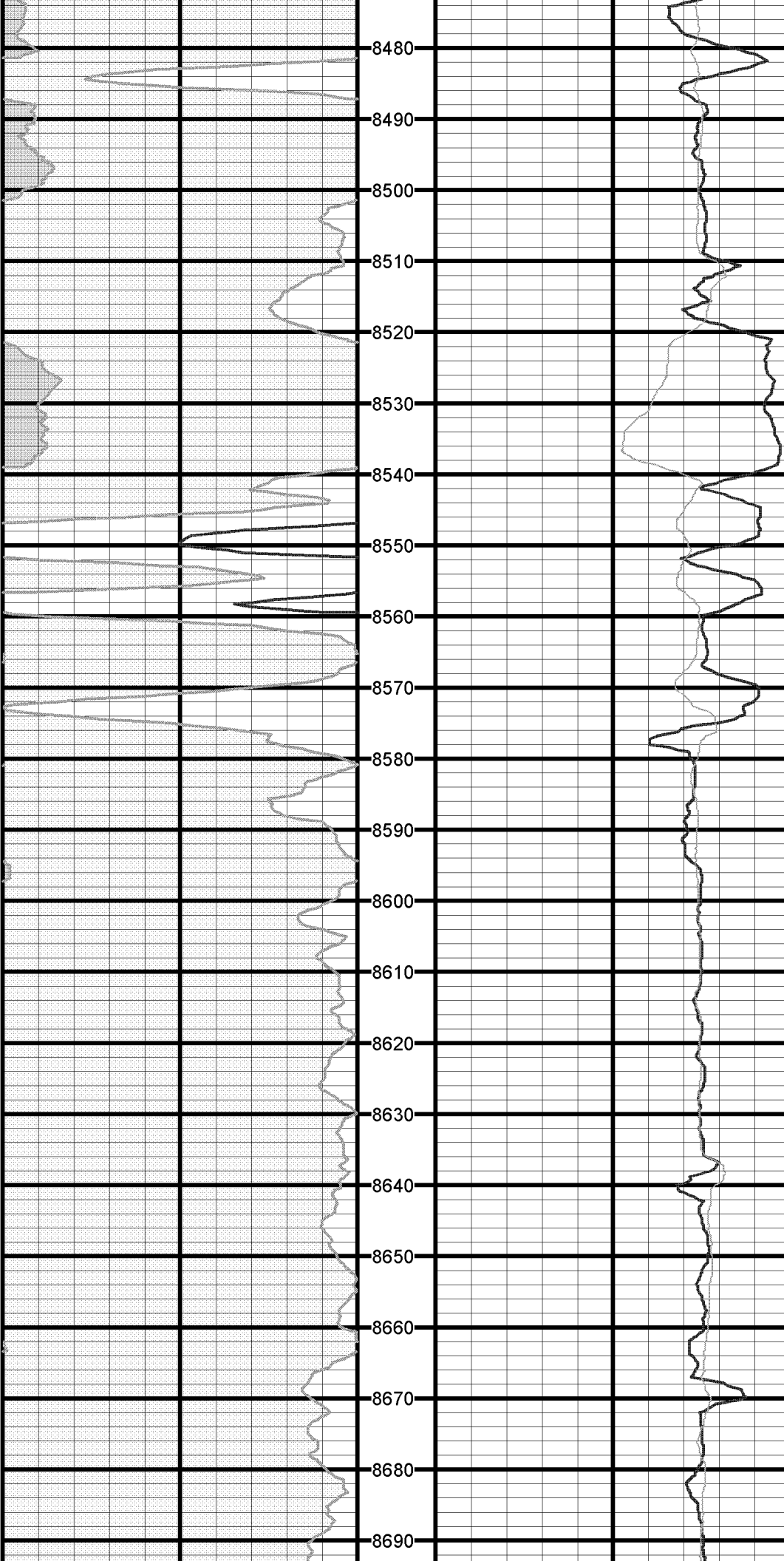
#39 MD:8280.0 TVD:7644.5 I:89.2 A:314.3 VS:932.8

#40 MD:8343.0 TVD:7645.0 I:89.9 A:314.4 VS:995.8

#41 MD:8405.0 TVD:7644.7 I:90.5 A:314.6 VS:1057.8

#42 MD:8468.0 TVD:7644.5 I:90.0 A:315.4 VS:1120.8



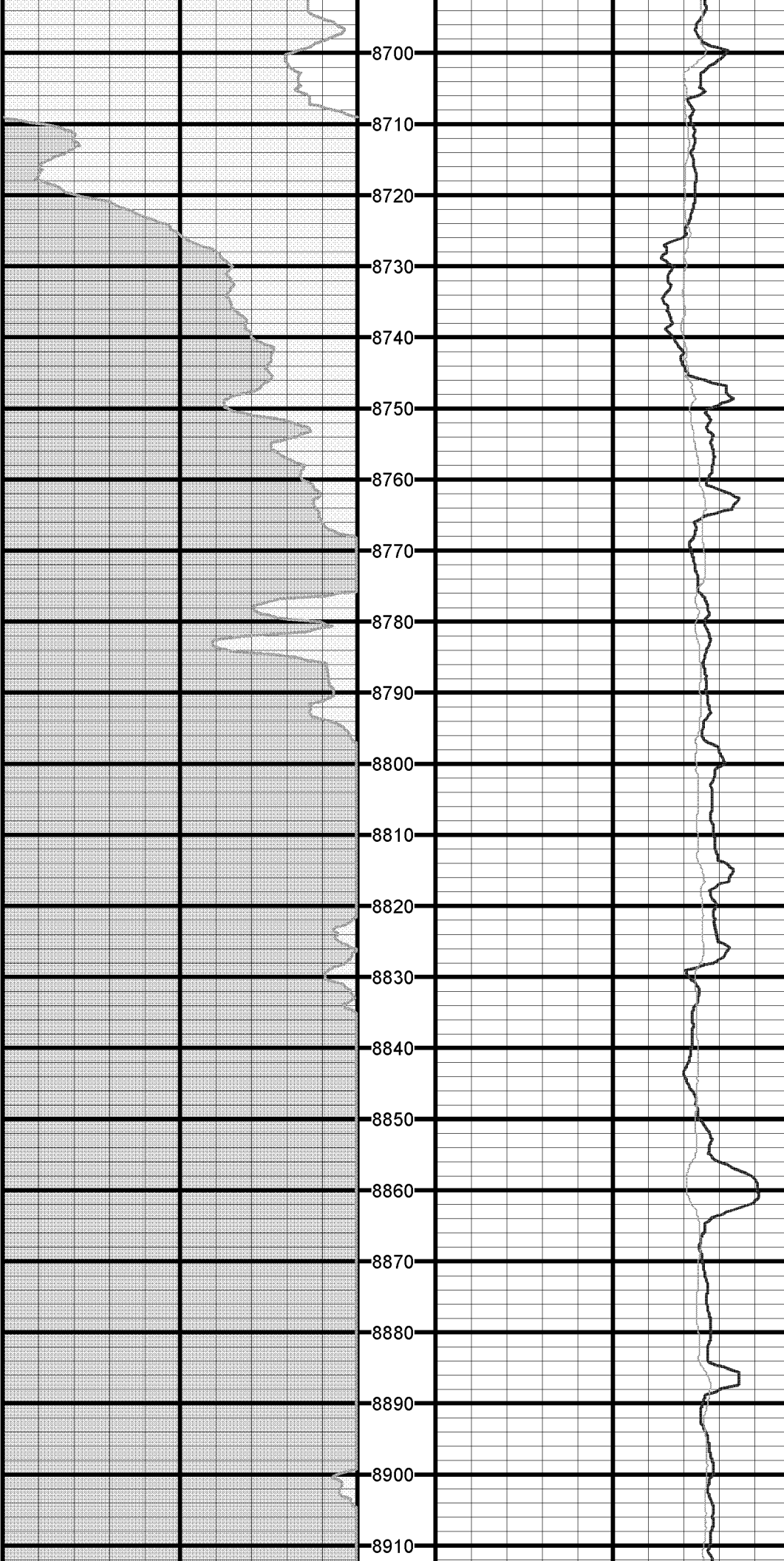


8480  
8490  
8500  
8510  
8520  
8530  
8540  
8550  
8560  
8570  
8580  
8590  
8600  
8610  
8620  
8630  
8640  
8650  
8660  
8670  
8680  
8690

#43 MD:8530.0 TVD:7645.5 I:88.0 A:315.6 VS:1182.8

#44 MD:8593.0 TVD:7648.2 I:87.1 A:316.2 VS:1245.7

#45 MD:8655.0 TVD:7651.2 I:87.4 A:315.4 VS:1307.7

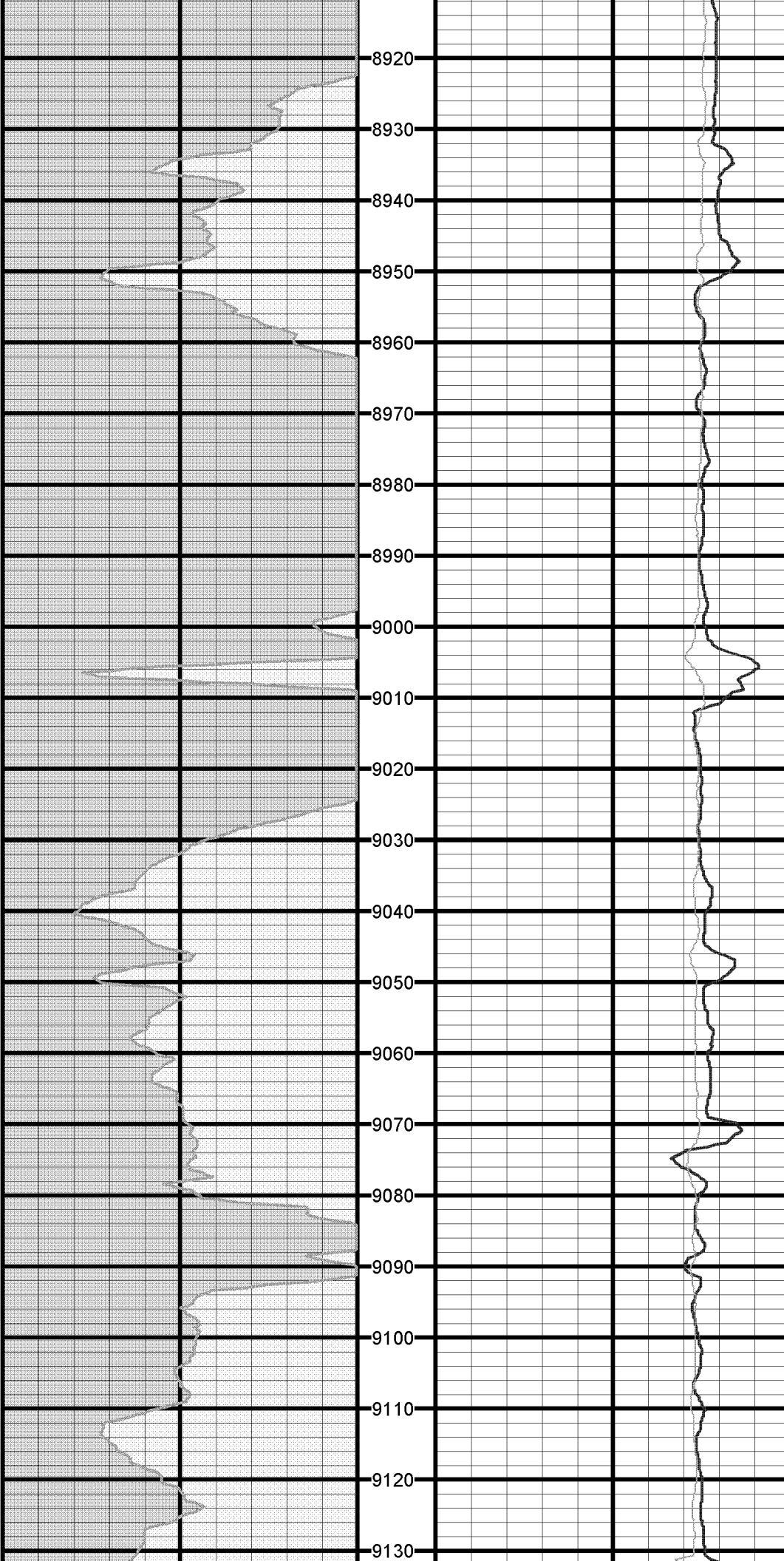


#46 MD:8718.0 TVD:7654.0 I:87.6 A:315.8 VS:1370.6

#47 MD:8780.0 TVD:7656.4 I:87.9 A:315.5 VS:1432.5

#48 MD:8843.0 TVD:7658.6 I:88.1 A:315.9 VS:1495.5

#49 MD:8905.0 TVD:7660.5 I:88.3 A:315.4 VS:1557.5



8920

8930

8940

8950

8960

8970

8980

8990

9000

9010

9020

9030

9040

9050

9060

9070

9080

9090

9100

9110

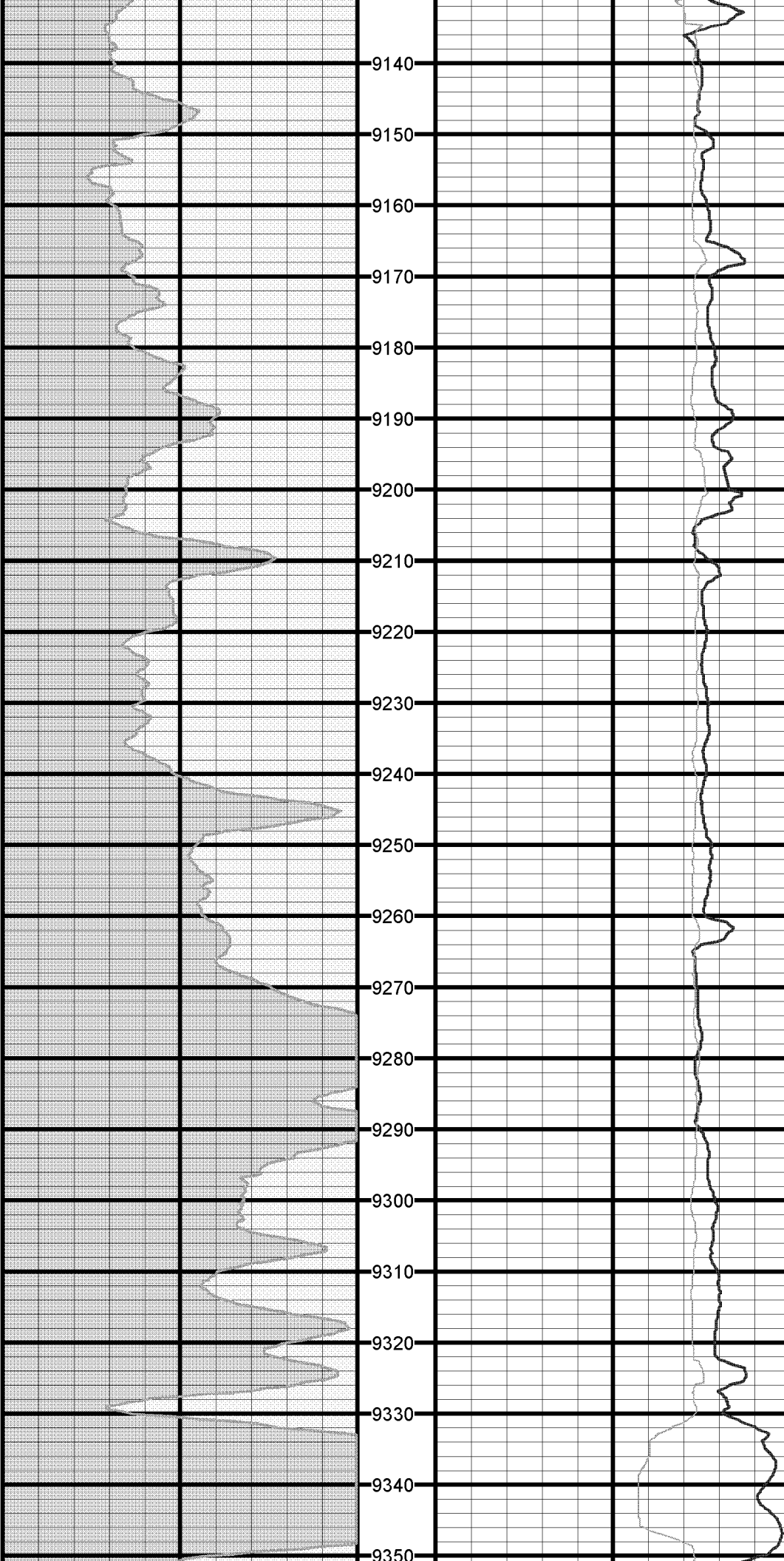
9120

9130

#50 MD:8967.0 TVD:7661.9 I:89.2 A:316.2 VS:1619.4

#51 MD:9030.0 TVD:7662.8 I:89.2 A:316.0 VS:1682.4

#52 MD:9092.0 TVD:7663.9 I:88.8 A:315.1 VS:1744.4



9140

9150

9160

9170

9180

9190

9200

9210

9220

9230

9240

9250

9260

9270

9280

9290

9300

9310

9320

9330

9340

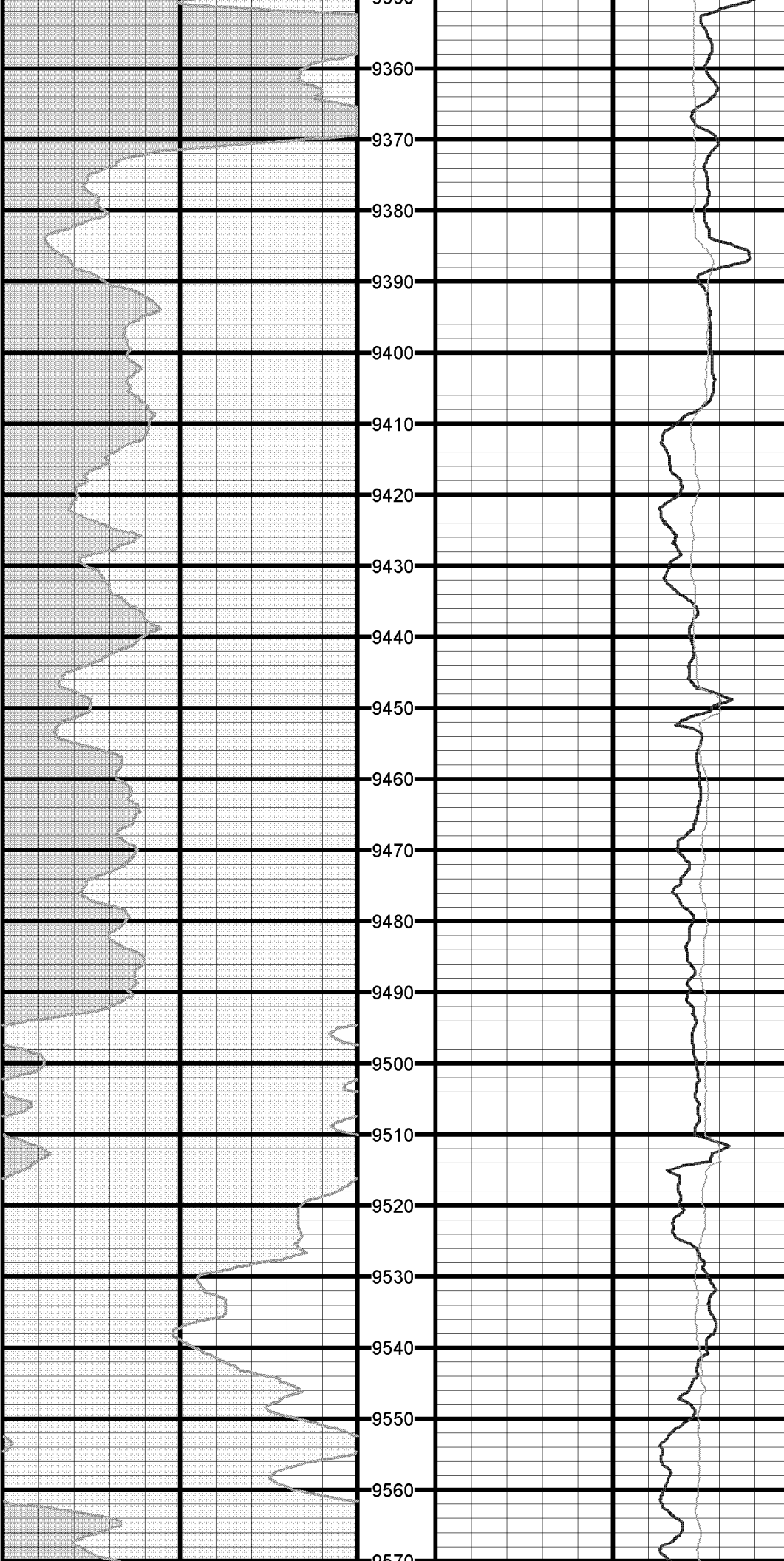
9350

#53 MD:9155.0 TVD:7664.7 I:89.6 A:315.5 VS:1807.4

#54 MD:9218.0 TVD:7665.0 I:90.0 A:316.1 VS:1870.4

#55 MD:9280.0 TVD:7664.7 I:90.5 A:316.4 VS:1932.4

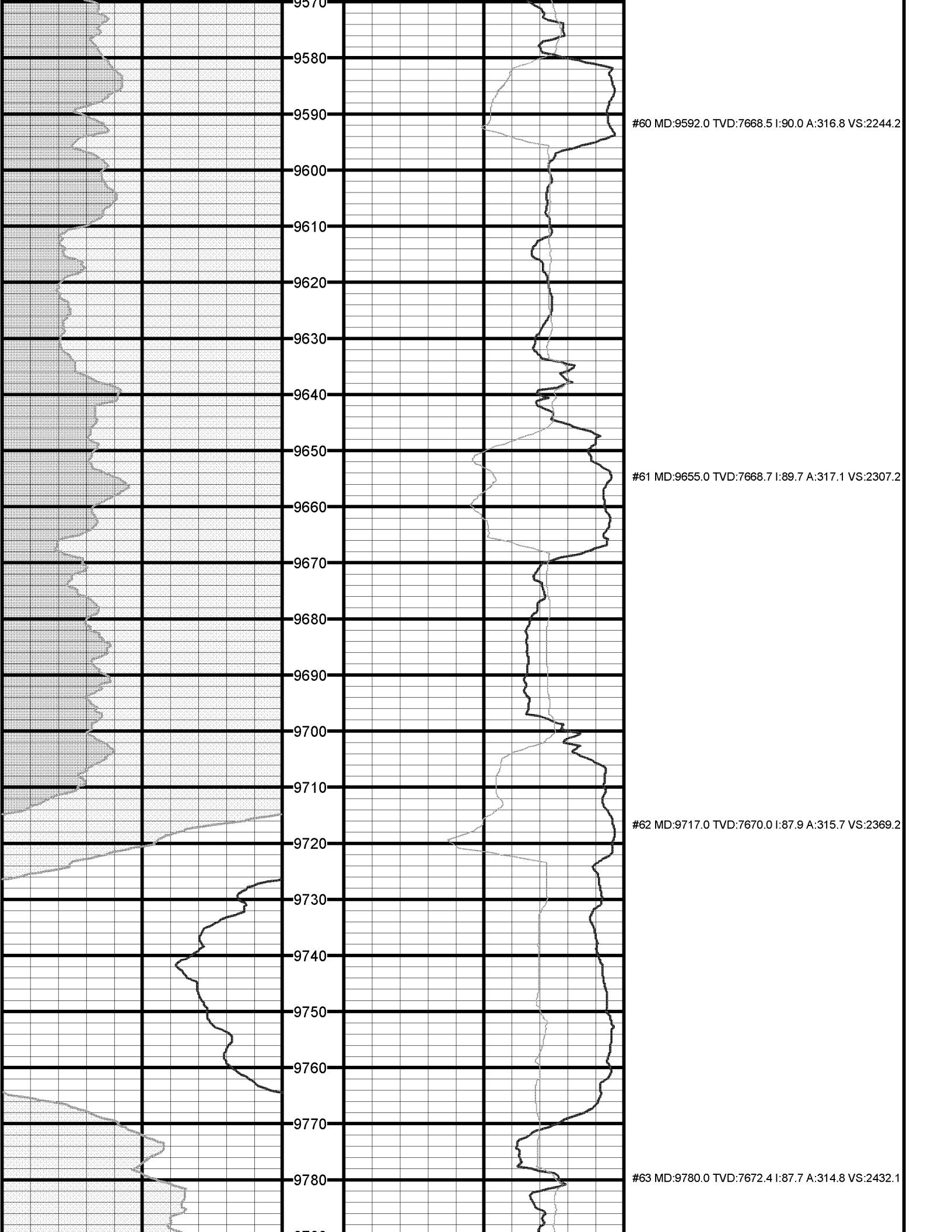
#56 MD:9343.0 TVD:7664.7 I:89.4 A:316.2 VS:1995.3

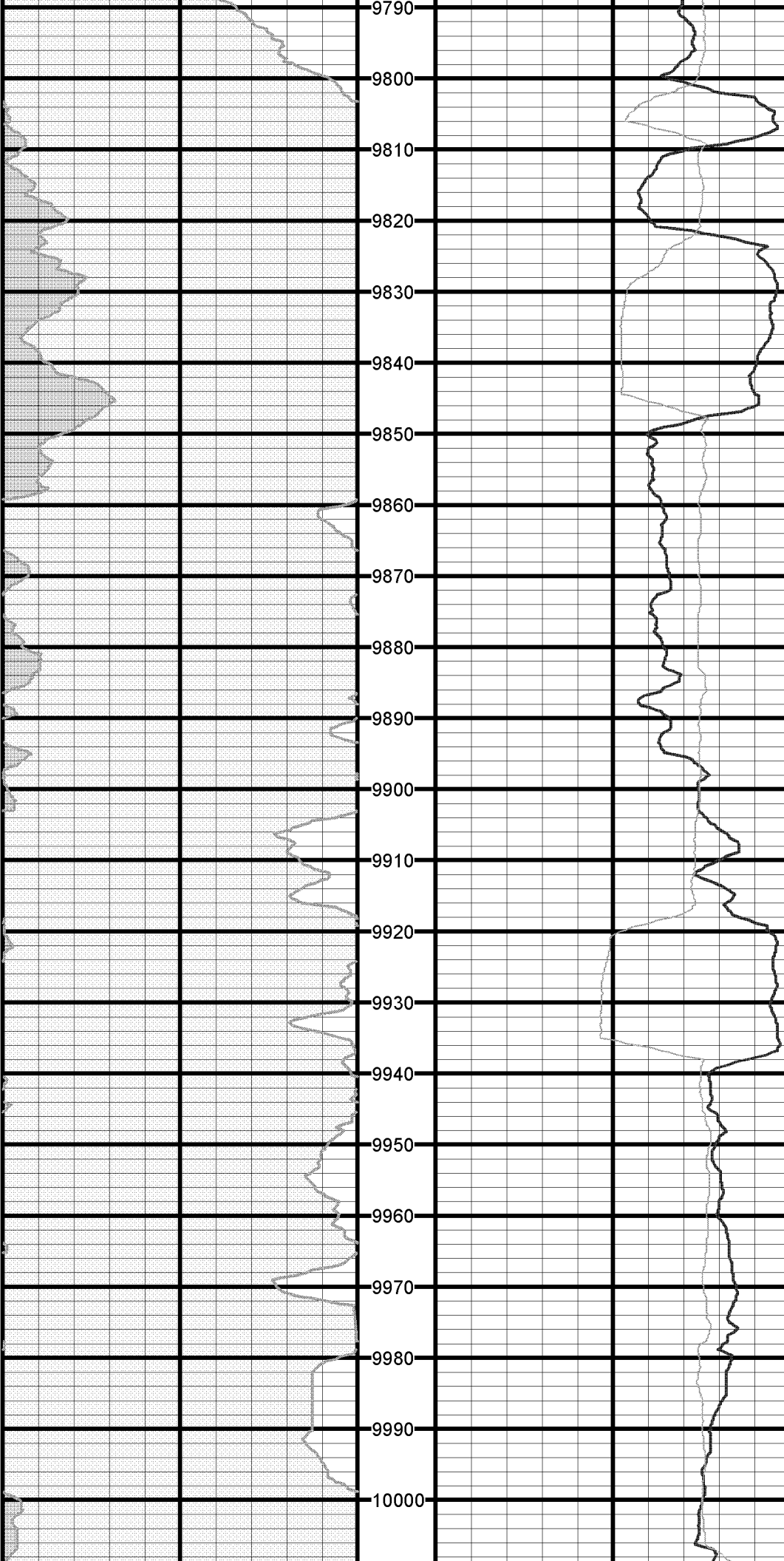


#57 MD:9405.0 TVD:7665.9 I:88.4 A:315.4 VS:2057.3

#58 MD:9468.0 TVD:7667.6 I:88.6 A:315.1 VS:2120.3

#59 MD:9530.0 TVD:7668.4 I:89.8 A:316.5 VS:2182.3

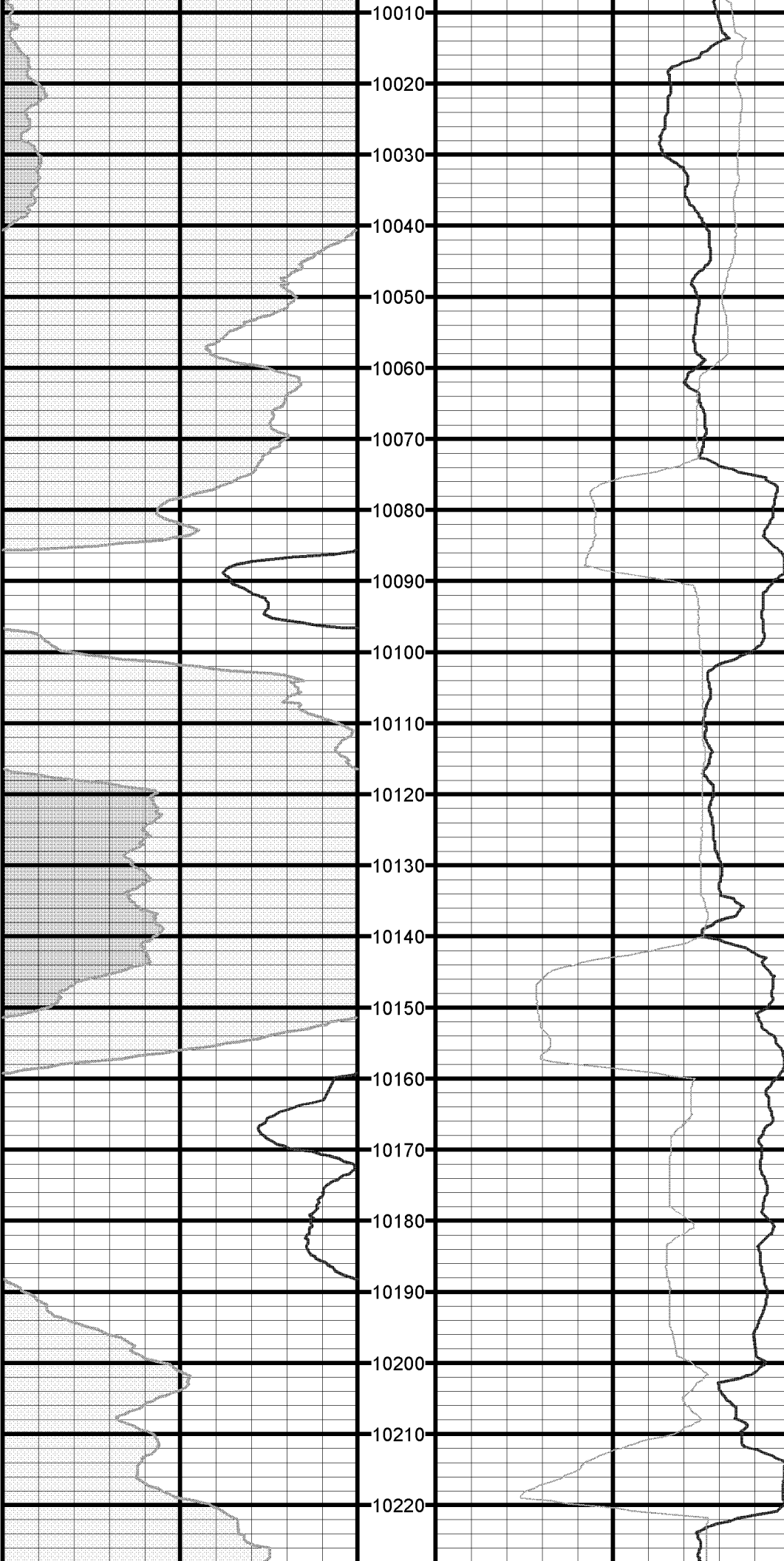




#64 MD:9843.0 TVD:7674.5 I:88.5 A:312.5 VS:2495.1

#65 MD:9905.0 TVD:7675.8 I:89.2 A:311.7 VS:2557.0

#66 MD:9968.0 TVD:7675.7 I:90.9 A:311.4 VS:2619.9



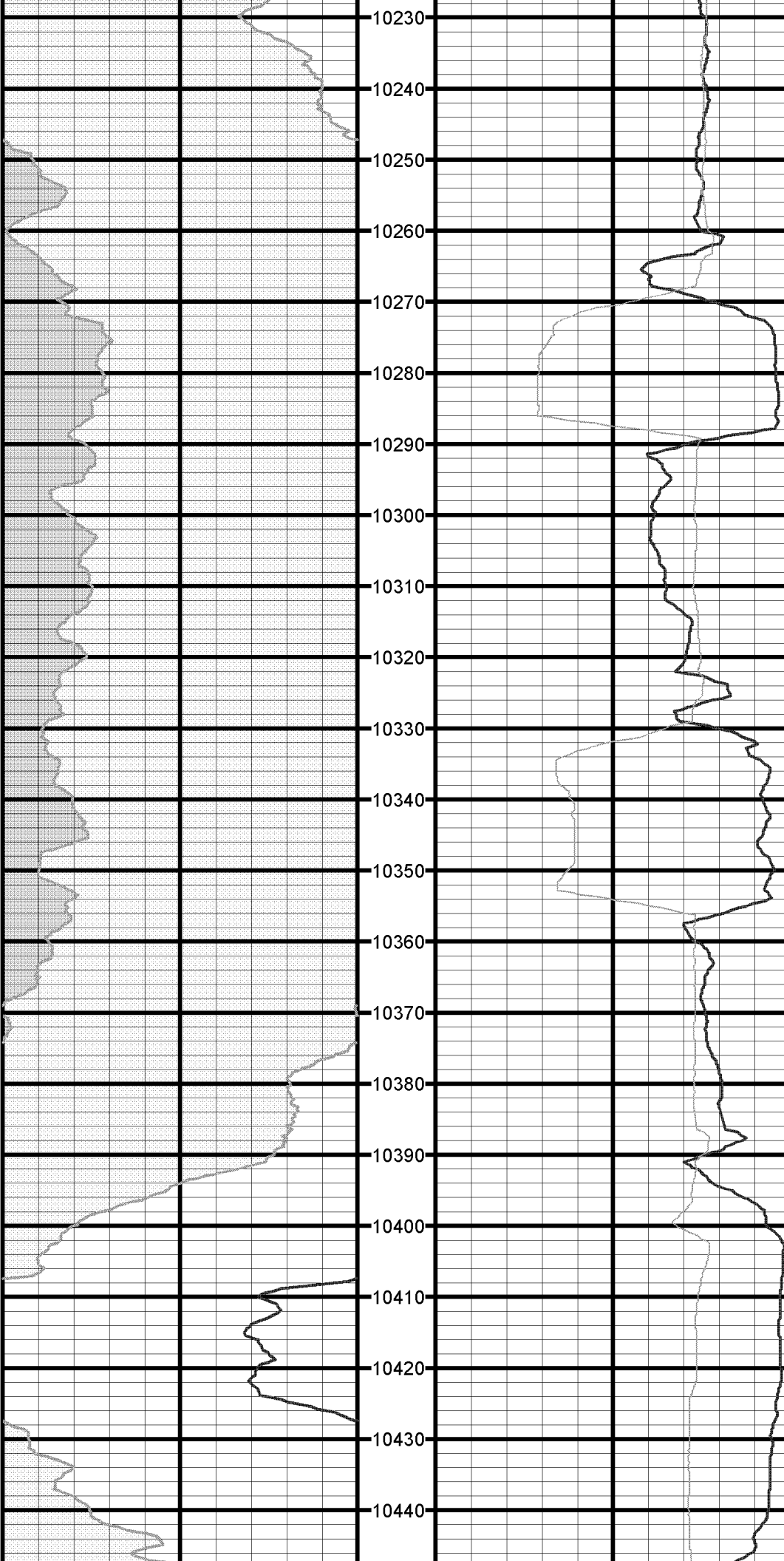
#67 MD:10030.0 TVD:7674.4 I:91.6 A:310.6 VS:2681.7

#68 MD:10093.0 TVD:7672.5 I:91.8 A:312.2 VS:2744.6

#69 MD:10156.0 TVD:7671.8 I:89.4 A:311.6 VS:2807.5

#70 MD:10218.0 TVD:7673.0 I:88.4 A:311.0 VS:2869.4

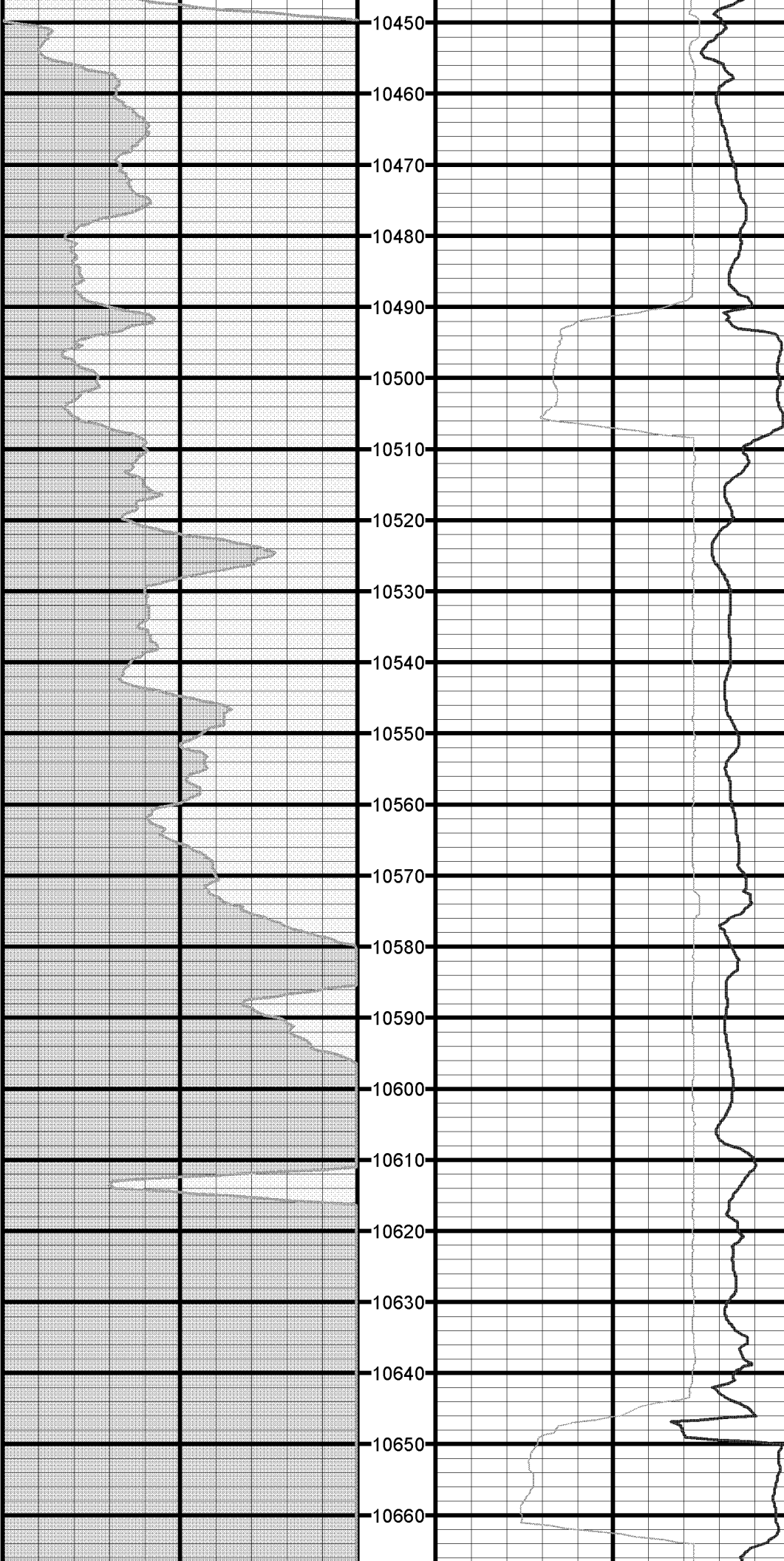




#71 MD:10281.0 TVD:7674.3 I:89.3 A:309.8 VS:2932.2

#72 MD:10343.0 TVD:7674.1 I:91.1 A:311.7 VS:2994.0

#73 MD:10405.0 TVD:7672.7 I:91.4 A:311.3 VS:3055.9

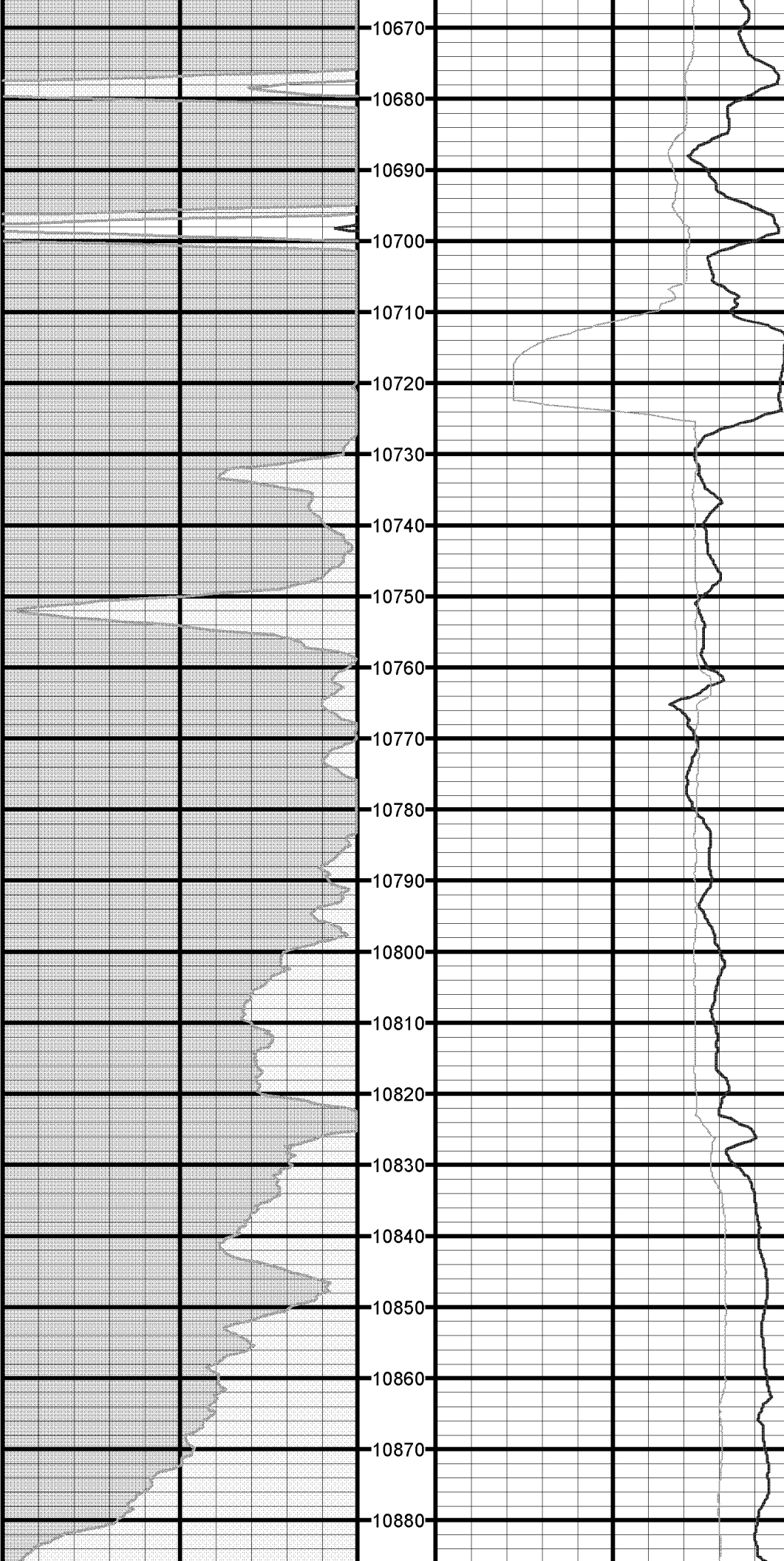


#74 MD:10468.0 TVD:7670.6 I:92.4 A:312.0 VS:3118.7

#75 MD:10530.0 TVD:7668.9 I:90.8 A:312.5 VS:3180.7

#76 MD:10593.0 TVD:7667.9 I:91.0 A:312.1 VS:3243.6

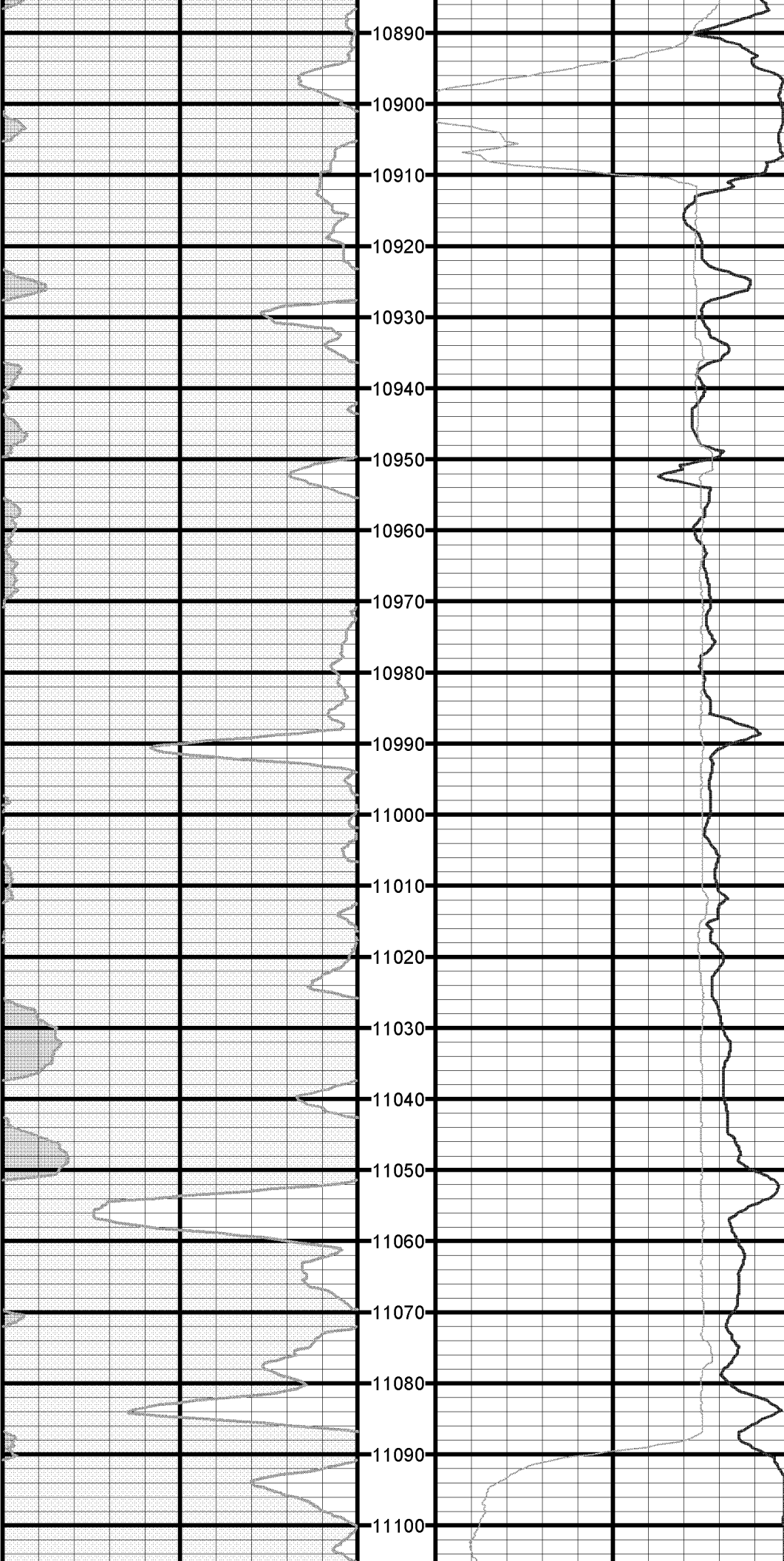
#77 MD:10655.0 TVD:7666.7 I:91.3 A:312.6 VS:3305.5



#78 MD:10718.0 TVD:7665.3 I:91.2 A:314.0 VS:3368.5

#79 MD:10781.0 TVD:7663.7 I:91.7 A:315.4 VS:3431.5

#80 MD:10843.0 TVD:7661.5 I:92.3 A:315.7 VS:3493.4



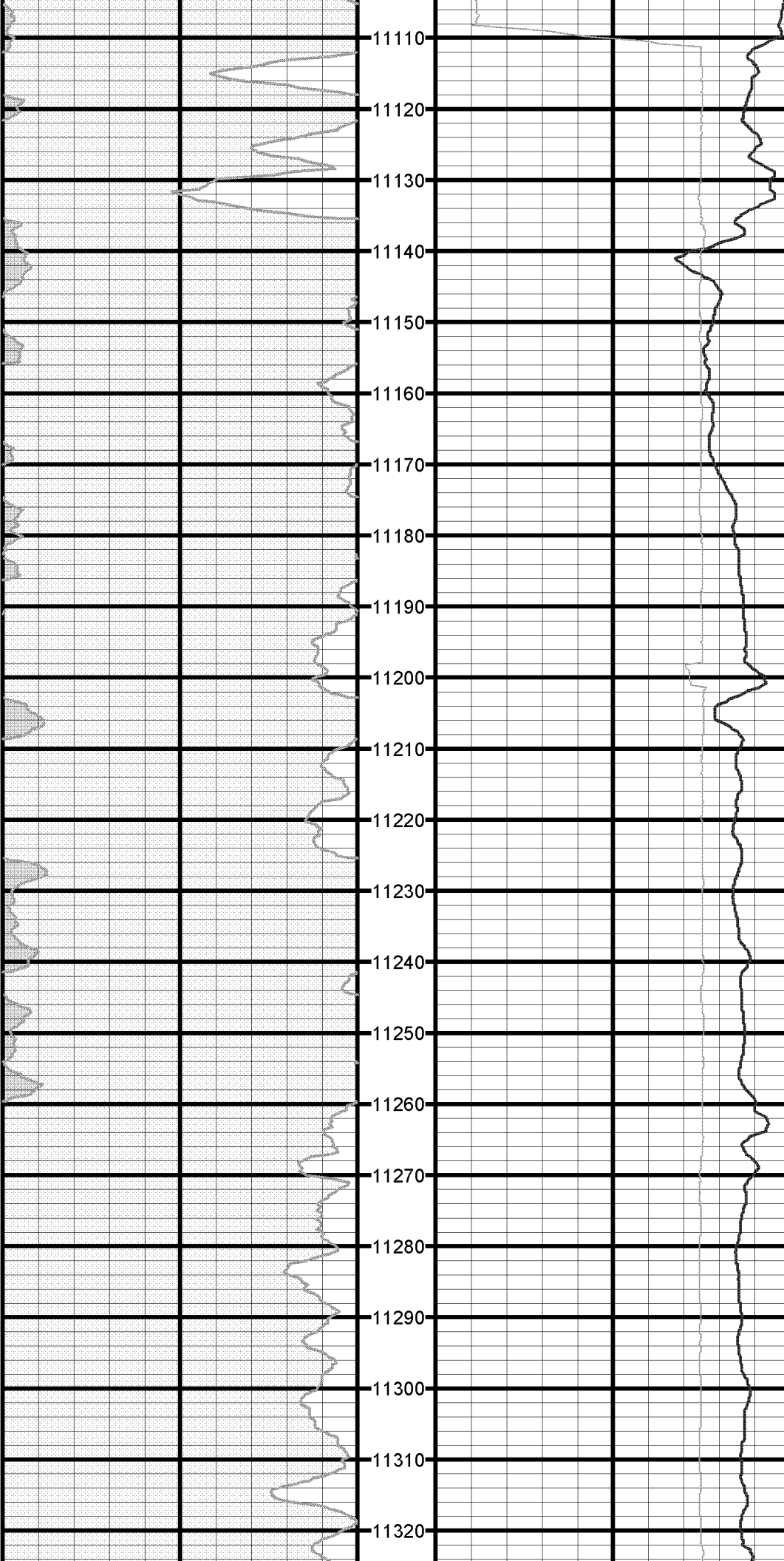
10890  
10900  
10910  
10920  
10930  
10940  
10950  
10960  
10970  
10980  
10990  
11000  
11010  
11020  
11030  
11040  
11050  
11060  
11070  
11080  
11090  
11100

#81 MD:10906.0 TVD:7659.7 I:91.0 A:315.4 VS:3556.4

#82 MD:10968.0 TVD:7658.9 I:90.5 A:315.8 VS:3618.4

#83 MD:11031.0 TVD:7658.1 I:90.9 A:315.1 VS:3681.4

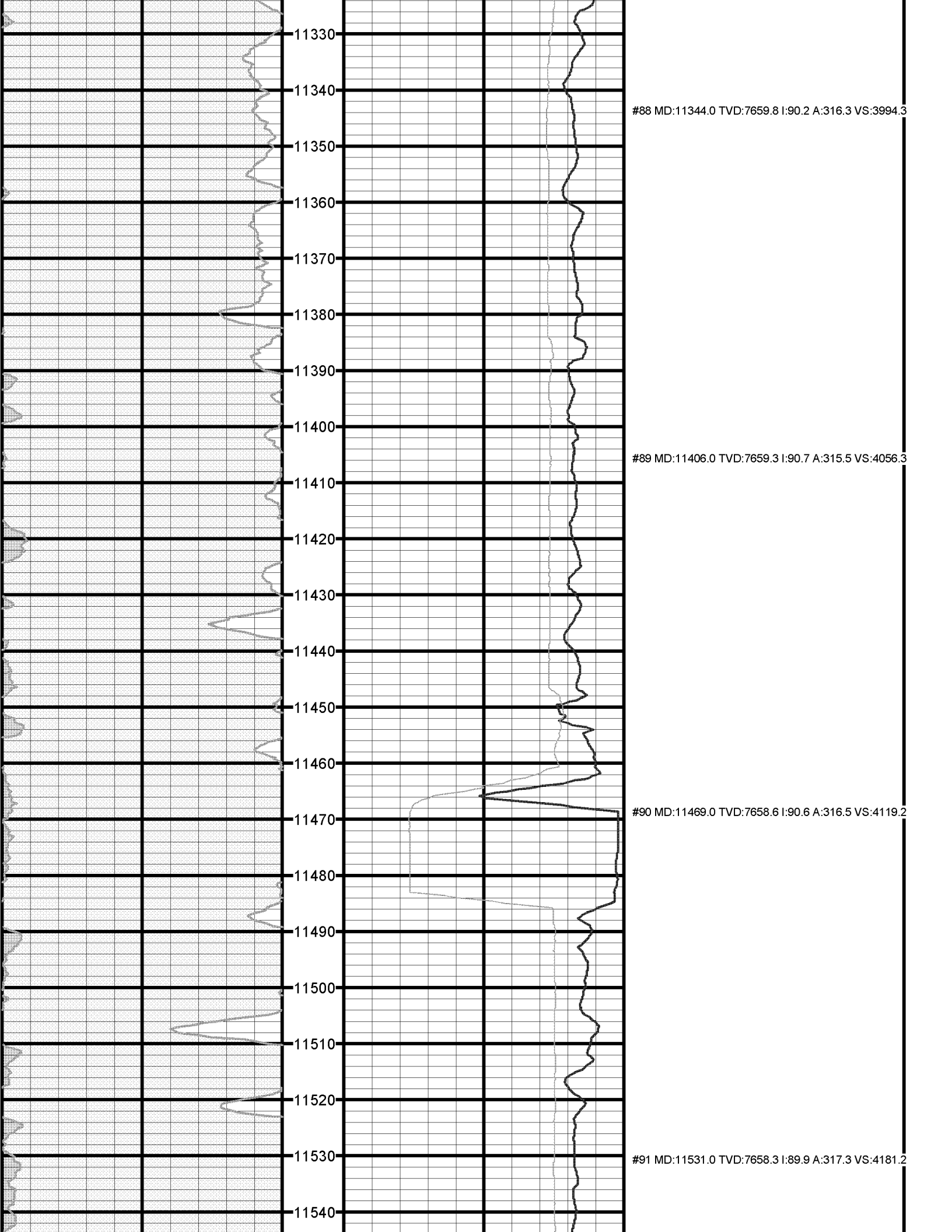
#84 MD:11094.0 TVD:7657.7 I:89.8 A:315.6 VS:3744.3



#85 MD:11156.0 TVD:7658.5 I:88.9 A:316.0 VS:3806.3

#86 MD:11218.0 TVD:7659.4 I:89.4 A:316.2 VS:3868.3

#87 MD:11281.0 TVD:7659.8 I:89.8 A:316.2 VS:3931.3

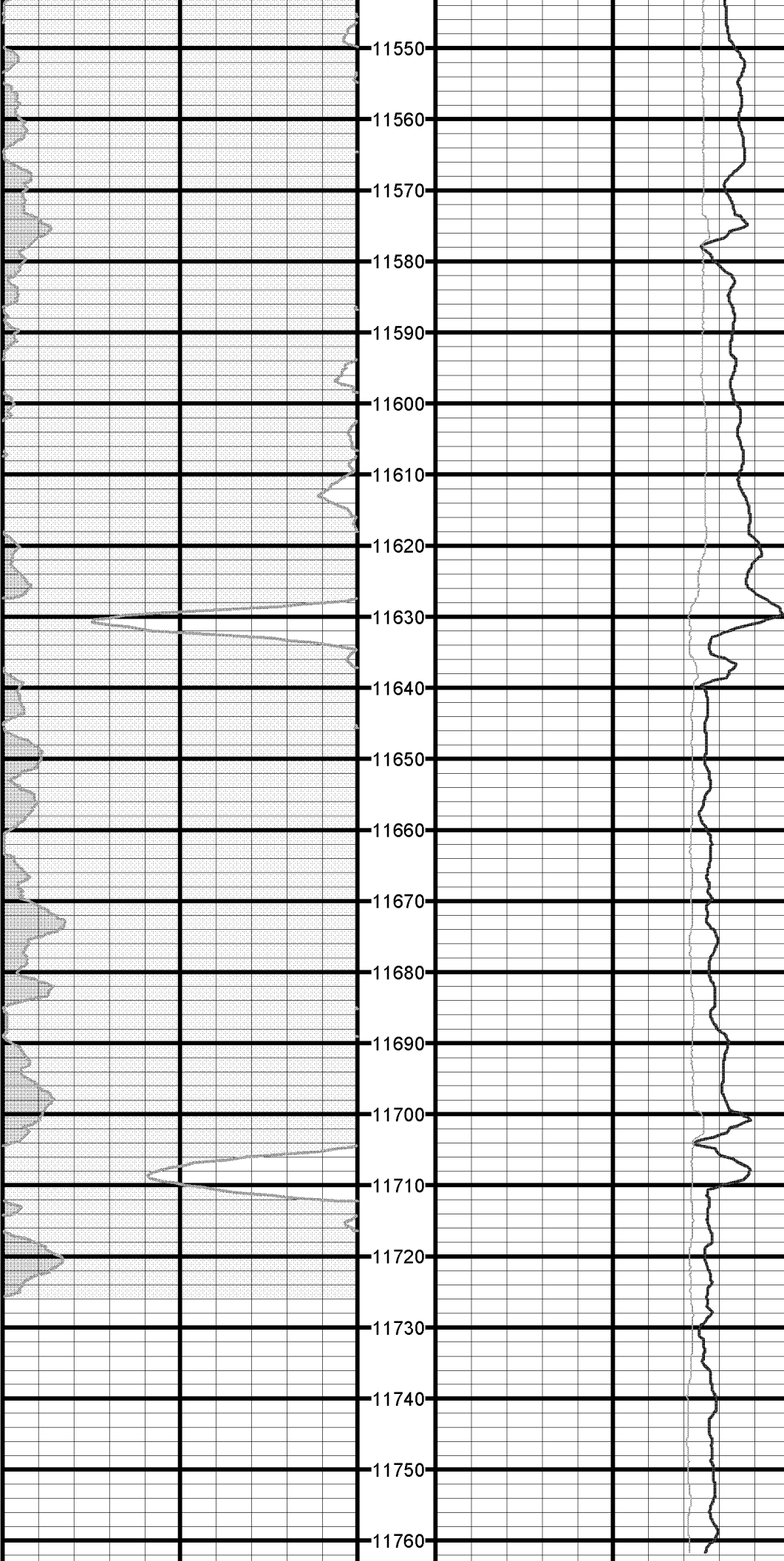


#88 MD:11344.0 TVD:7659.8 I:90.2 A:316.3 VS:3994.3

#89 MD:11406.0 TVD:7659.3 I:90.7 A:315.5 VS:4056.3

#90 MD:11469.0 TVD:7658.6 I:90.6 A:316.5 VS:4119.2

#91 MD:11531.0 TVD:7658.3 I:89.9 A:317.3 VS:4181.2

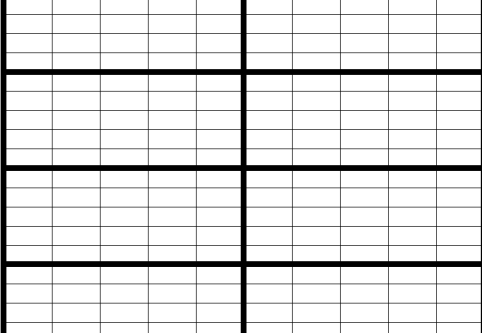


#92 MD:11594.0 TVD:7658.2 I:90.4 A:316.8 VS:4244.2

#93 MD:11656.0 TVD:7657.7 I:90.5 A:317.2 VS:4306.1

#94 MD:11719.0 TVD:7657.1 I:90.6 A:317.1 VS:4369.0

#95 MD:11763.0 TVD:7656.6 I:90.6 A:317.1 VS:4413.0



11770  
11780  
11790

