

1.405

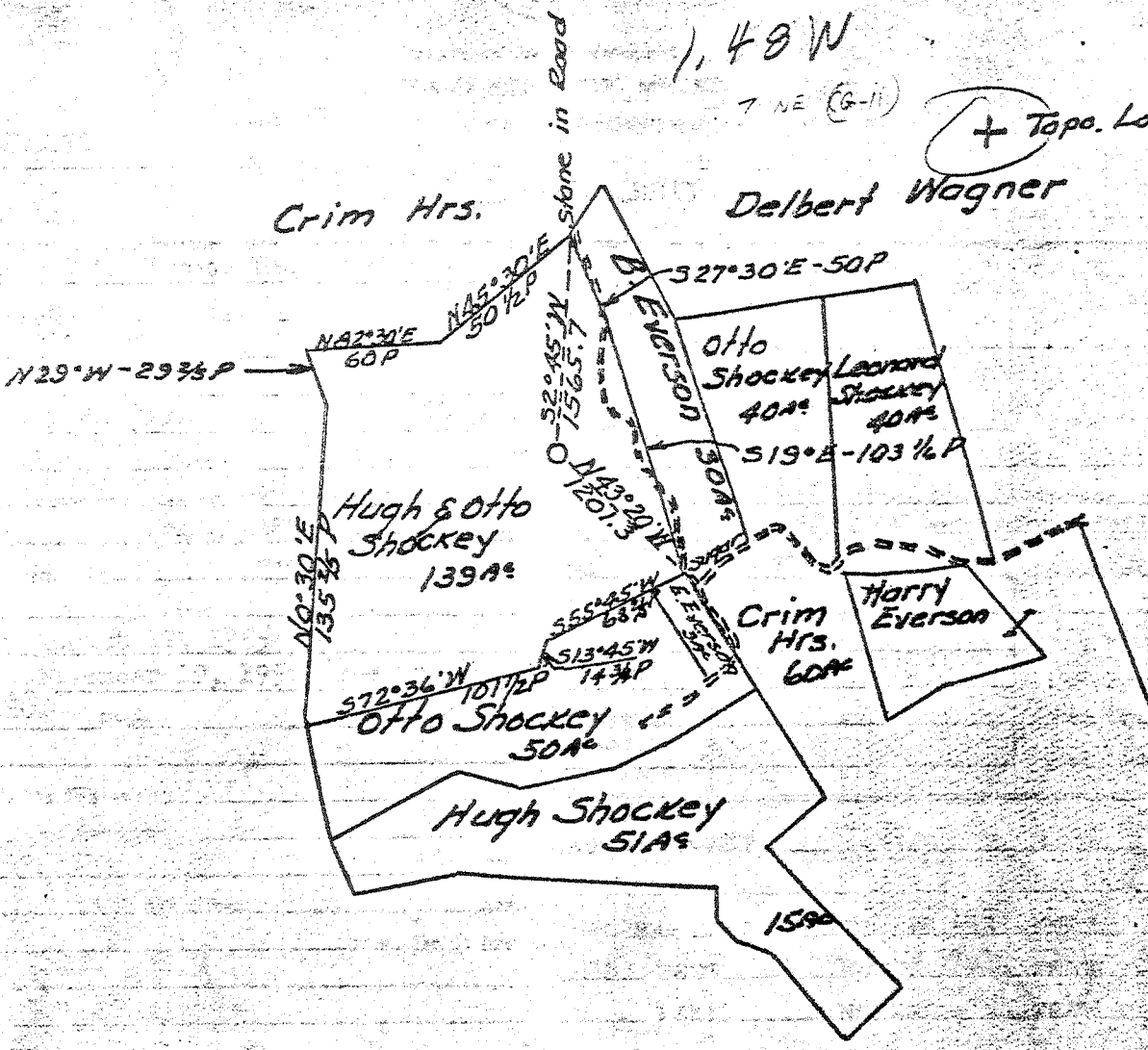
1.48 W

7 NE (G-11)

+ Topo. Loc.

Crim Hrs.

Delbert Wagner



- New Location...
- Drill Deeper.....
- Abandonment.....

Company Godfrey L. Cabot Inc.
 Address Box 1473 Charleston W. Va.
 Farm Otto Shockey et al Unit # I
 Tract _____ Acres 500 Lease No. _____
 Well (Farm) No. 1 Serial No. 1439
 Elevation (Spirit Level) 2035.0
 Quadrangle Phillippi - SE
 County Barbour District Barker
 Engineer H. J. Simmons Jr.
 Engineer's Registration No. 1652
 File No. _____ Drawing No. _____
 Date 7-11-55 Scale 1" = 1320'

STATE OF WEST VIRGINIA
 DEPARTMENT OF MINES,
 OIL AND GAS DIVISION
 CHARLESTON

WELL LOCATION MAP
 FILE NO. BAR-84

+ Denotes location of well on United States Topographic Maps. scale 1 to 62,500, latitude and longitude lines being represented by border lines as shown.
 - Denotes one inch spaces on border line of original tracing.

Samples 5B (2205-4434, 6910-8008) Beckhannon - 1-0 0 Deep Well



STATE OF WEST VIRGINIA
DEPARTMENT OF MINES
OIL AND GAS DIVISION

Quadrangle PHILLIPI

WELL RECORD

Oil or Gas Well DRY HOLE
(KIND)

Permit No. BAR-84

Company Godfrey L. Cabot, Inc.
Address Charleston, W. Va.
Farm Otto Shockey (unit) Acres 500
Location (waters) _____
Well No. 1, Serial 1439 Elev. 2035
District Barker County Barbour
The surface of tract is owned in fee by Otto Shockey
Address RFD #3, Belington, W. Va.
Mineral rights are owned by _____
Address _____

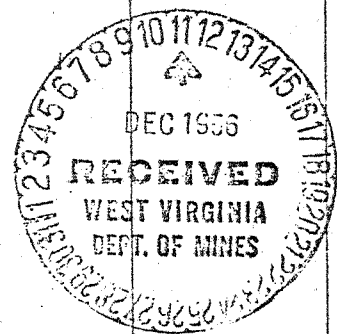
Casing and Tubing	Used in Drilling	Left in Well	Packers
Size			Kind of Packer
16			
13	767		
10	1270		Size of <u>rotary</u>
8 1/4	2171	Pulled before drilling with	Depth set
6 3/4	7717		
5 3/16			Perf. top
3			Perf. bottom
2			Perf. top
Liners Used			Perf. bottom

Drilling commenced August 12, 1955
Drilling completed November 19, 1956 (see note)
Date Shot NOT SHOT From _____ To _____
With _____
Open Flow /10ths Water in Inch
/10ths Merc. in Inch
Volume _____ Cu. Ft.
Rock Pressure _____ lbs. _____ hrs.
Oil _____ bbls., 1st 24 hrs.
WELL ACIDIZED _____
WELL FRACTURED _____

CASING CEMENTED	SIZE	No. Ft.	Date
COAL WAS ENCOUNTERED AT <u>145</u> FEET <u>24</u> INCHES			
<u>314</u> FEET <u>48</u> INCHES <u>762</u> FEET <u>36</u> INCHES			
FEET INCHES FEET INCHES			

RESULT AFTER TREATMENT _____
ROCK PRESSURE AFTER TREATMENT _____
Fresh Water 30, 332 Feet Salt Water _____ Feet

Formation	Color	Hard or Soft	Top	Bottom	Oil, Gas or Water	Depth	Remarks
and shale			10	32	Water	30	2 blrs./hr.
and shale			32	43			
and shale			43	83			
lime shale			83	142			
coal shale			142	145			
coal shale			145	147			
and shale			147	160	Water	332	2 blrs./hr.
and shale			160	314			
coal shale			314	318			
and shale			318	340			
and shale			340	423			
lime shale			423	438			
and shale			438	464			
lime shale			464	526			
lime shale			526	560			
lime shale			560	595			
and shale			595	628			
lime shale			628	655			
lime shale			655	676			
and shale			676	702			
lime shale			702	762			
coal shale			762	765			
lime & Red Rock			765	812			
and shale			812	817			
Red Rock			817	905			
lime shale			905	922			
Red Rock			922	951			
lime shale			951	1010			
and shale			1010	1014			



GEOLOG

Formation	Color	Hard or Soft	Top /	Bottom	Oil, Gas or Water	Depth Found	Remarks
Red Rock			1044	1144			
Sand			1144	1159			
Red Rock			1159	1176			
Shale			1176	1185			
Lime			1185	1225			
Sand			1225	1240			
Lime			1240	1260			
MG LIME			1260	1345			
Sandy Lime			1345	1380			
Sand & Shale			1380	1387			
Sandy Lime			1387	1410			
Lime			1410	1470			
Shale			1470	1516			
Sand - Squaw			1516	1540			
Slate & Shell			1540	1649			
Sand - Berea			1649	1656			
Slate & Shell			1656	1730			
Red Rock			1730	1736			
Sand			1736	1767			
Red Rock & Shale			1767	1787			
Sand			1787	1818			
Red Rock			1818	1826			
Sand			1826	1845			
Red Rock			1845	1960			
Sand			1960	1980			
Red Rock			1980	2021			
Sand			2021	2035			
Red Rock			2035	2065			
Sand			2065	2083			
Red Rock			2083	2132			
Shale			2132	2178	Gas	2225	Show.
Sand			2178	2251			
Red Rock			2251	2260			
Slate & Shell			2260	2433			
Shale, Brown			2433	2457			
Slate & Shell			2457	2775	7685	7900	8000
Shale, Brown			2775	2794	2035	2035	2035
Slate & Shell			3794	3020	5650	5865	5965
Sand			3020	3033			
Slate & Shell			3033	3237			
Shale & Lime Shell			3237	3700			
Limey Sand			3700	3780			
Siltstone & Brown Shale			3780	3862			
Shale			3862	3967			
WENSON SAND			3967	4025			
Siltstone, Grey			4025	4188			
Sand			4188	4206			
Limey Siltstone			4206	4276			
Shale			4276	4339			
Slate & Shell			4339	4361			
Sand & Siltstone			4361	4433			
Shale	Grey		4433	4635			
Shale & Lime	Grey		4635	5010			
Shale	Grey		5010	6860			
Shale	Grey & Brown		6860	6960			
Shale	Dk. Grey		6960	7265			
Shale	Brown	Bucket	7265	7403			
WULLY LIME			7403	7445	Gas	7403	Blow, estimated
Shale - (M)	Grey		7445	7450		6,000 Mbf; exhausted	
Shale - (M)	Black		7450	7702		24 minutes.	
Chert - (M)	770	7698-7906	7702	7893			
Lime - (M)			7893	7910			
ORISKANY		7906-8006	7910	8000			
CHERT & CHEST		8006-	8000	8008			
TOTAL DEPTH				8008			

NOTE: HOLE DRILLED BY CABLE TOOLS TO 4433. Air rotary from 4433 to total depth, October 17, 1956 to November 19, 1956.

Gas 7403 Blow, estimated 6,000 Mbf; exhausted 24 minutes.

NOTE: 7702-7893; some dark grey to black dolomitic lime interbedded with chert. NO GAS, OIL OR WATER IN ORISKANY.

485

Date December 6, 1956

7702 7910
2035 2035
5667 5875

APPROVED _____, Owner
By GODFREY L. CABOT, INC. (Title)

Handwritten initials and scribbles.