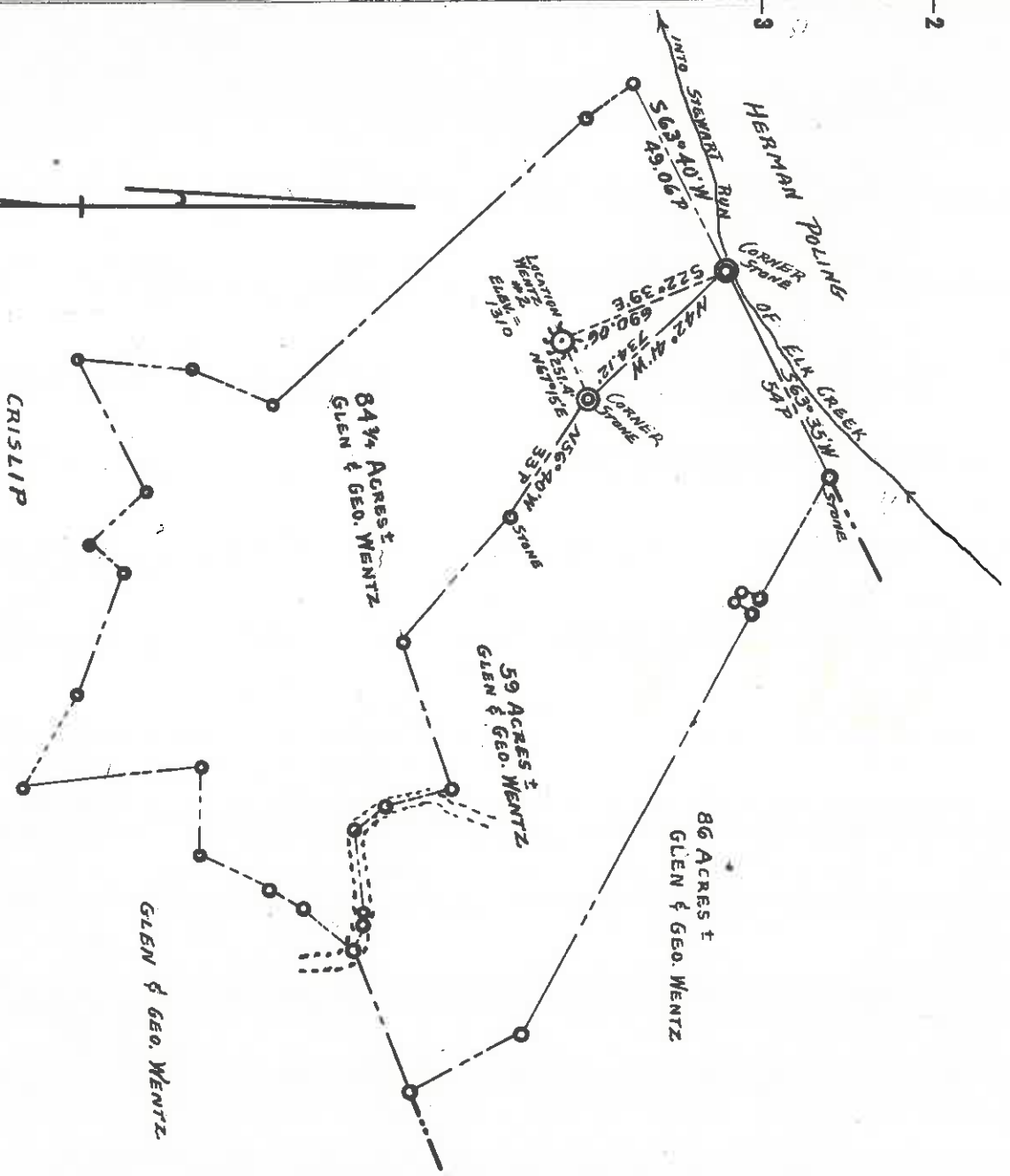


Latitude 39° 10' ^m

Longitude 80° 05'



"I, THE UNDERSIGNED, HEREBY CERTIFY THAT THIS MAP IS CORRECT TO THE BEST OF MY KNOWLEDGE AND BELIEF AND SHOWS ALL THE INFORMATION REQUIRED BY PARAGRAPH 6 OF THE RULES AND REGULATIONS OF THE OIL AND GAS SECTION OF THE MINING LAWS OF WEST VIRGINIA."

By Paul H. Dean

New Location
 Drill Deeper
 Abandonment

Company BARRON KIDD
 Address Box 186, SISTERSVILLE, W.Va.
 Farm GLEN & GEORGE WENTZ *Anderson Lease*
 Tract 2 Acres 143 3/4 ± Lease No. _____
 Well (Farm) No. 2 Serial No. _____
 Elevation (Spirit Level) 1310
 Quadrangle PHILIPPI
 County BARBOUR District ELK
 Engineer Paul H. Dean
 Engineer's Registration No. 1856
 File No. 6WL 136-3 Drawing No. 63-4
 Date FEB. 5, 1963 Scale 1" = 40 POLES

STATE OF WEST VIRGINIA
 DEPARTMENT OF MINES
 OIL AND GAS DIVISION
 CHARLESTON

WELL LOCATION MAP
 FILE NO. BAR-135

+ Denotes location of well on United States Topographic Maps, scale 1 to 62,500, latitude and longitude lines being represented by border lines as shown.
 - Denotes one inch spaces on border line of original tracing.

6-4 155

