

# HOPE NATURAL GAS COMPANY

LOCATION FOR WELL No. 6969

C.H.                       
Location C

Kanawha DISTRICT

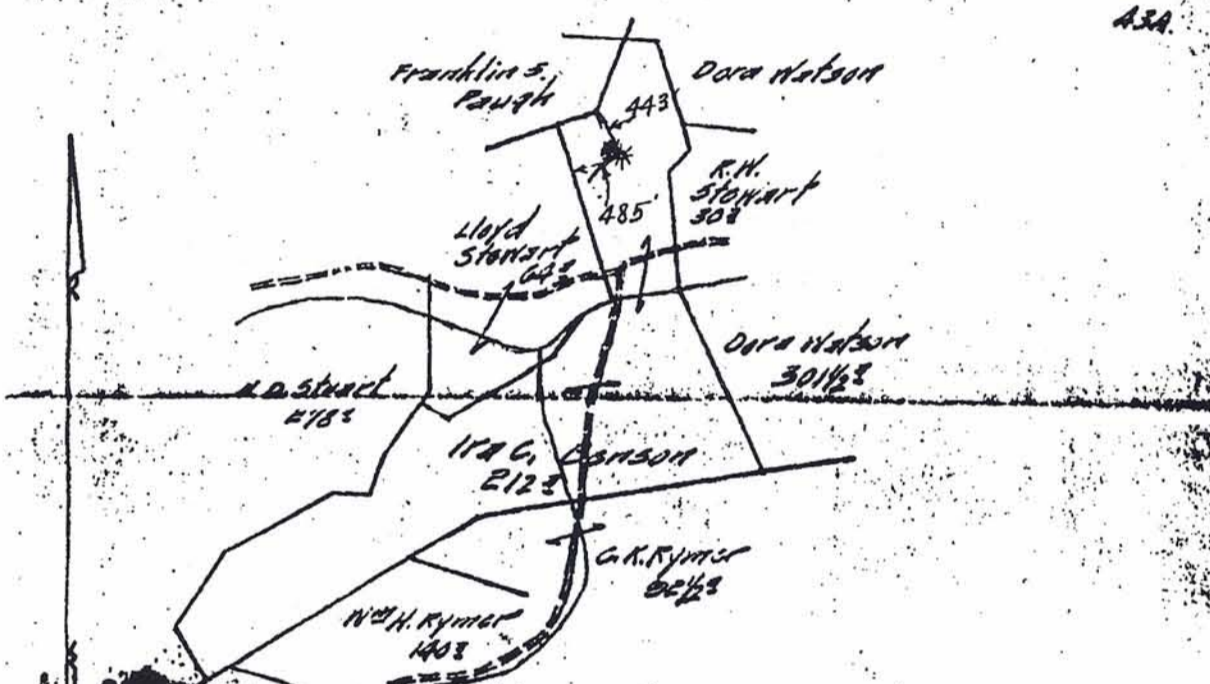
Farm, on waters of Elk Creek

Elk District, Barbour County, West Virginia

Lot No. 13845 Acres 100 N. S. 20 E. 23 W.

Scale: one inch equals 80 feet Location made in Pittsburgh Sent to Clarksburg

Location to be Purchased



ASA

Field Book 440 Page 39

|           |             |
|-----------|-------------|
| Well Book |             |
| Well Map  | DEC 27 1927 |
| Line Map  | DEC 20 1927 |
| Shots     | JAN 22 1928 |

API - 001 - 1007

TITLE RESERVE

SPECIAL INSTRUCTIONS: COMPLETE WELL ON OR BEFORE

Same Lease on which Located Well No.                     

X Location made Dec. 21, 1927 by H. D. Linger As per plat, except as noted. On field map

Dec. 24, 1927 Returned to Pittsburgh Dec. 24, 1927

Location changed on account of                     

Authorized by                      Date                      Signed S. H. Bradley  
By Talley

Prod 2010

Oil Well No. 6909

Grassellu #124

Ir. D. Benson #1

Barbour Co.

Rig completed Nov. 2, 1926

Drilling commenced Nov. 27, 1926

Completed Mar. 14, 1927

Open flow of gas in the Benson Sand Feb. 5: 32/10 water thru 2" opening or 269,376 cu.ft. Open flow Feb. 24: 10/10 thru 2" opening or 150,720 cu.ft. Well was shot with 50 quarts in the Benson Sand Feb. 25. Top of upper shell 4386 Bottom of lower shell 4396. Test before shot: 6/10 water thru 2" opening or 115,968 cu.ft. Test after shot: 80/10 water thru 3" opening or 969,840 cu.ft. Well was cleaned out Mar. 11 and tubing was run Mar. 12 and 13. Before and after the tubing was run open flow showed 35/10 water thru 2" opening or 281,568 cu.ft.

LOG OF WELL

|                    |             |
|--------------------|-------------|
| Sand               | 276 to 300  |
| Sand               | 320 " 528   |
| Sand               | 646 " 692   |
| Sand               | 741 " 782   |
| Sand               | 911 " 962   |
| Sand               | 1049 " 1140 |
| Little Lime        | 1366 " 1388 |
| Pencil Cave        | 1388 " 1418 |
| Big Lime           | 1418 " 1478 |
| Big Injun Show Gas | 1478 " 1598 |
| Sand               | 1602 " 1633 |
| Sand               | 1792 " 1893 |
| Sand               | 1905 " 1923 |
| Broken Sand        | 1923 " 1992 |
| Fourth Sand        | 2255 " 2320 |
| Fifth Sand         | 2341 " 2415 |
| Speckley Sand      | 3090 " 3094 |
| Benson Sand S.L.   | 4386 " 4395 |
| Gas                | 4389        |
| Total Depth        | 4439        |

CASING

|                        |       |
|------------------------|-------|
| 10"                    | 206   |
| 8 1/2" saved off joint | 1438  |
| 6 5/8" shoe            | 2260  |
| 3" tubing              | 4439  |
| Nipple                 | 16'1" |

Two full length perforation reach from 4386 to 4429

Lower packer set at 4318. Upper packer set at 4104

These packer are Oil Well Supply Co. Standard gas anchor 3 x 6 5/8

The diameter of each packer neck is 4 1/2"

Right and left nipple set at 3891. This right and left nipple is above the surface of the cement mixture ( 7 bags of cement and 7 bags of sand) which is mixed and poured down the hole on top of the upper packer after the tubing is lowered and the packers set.

API  
001-1007