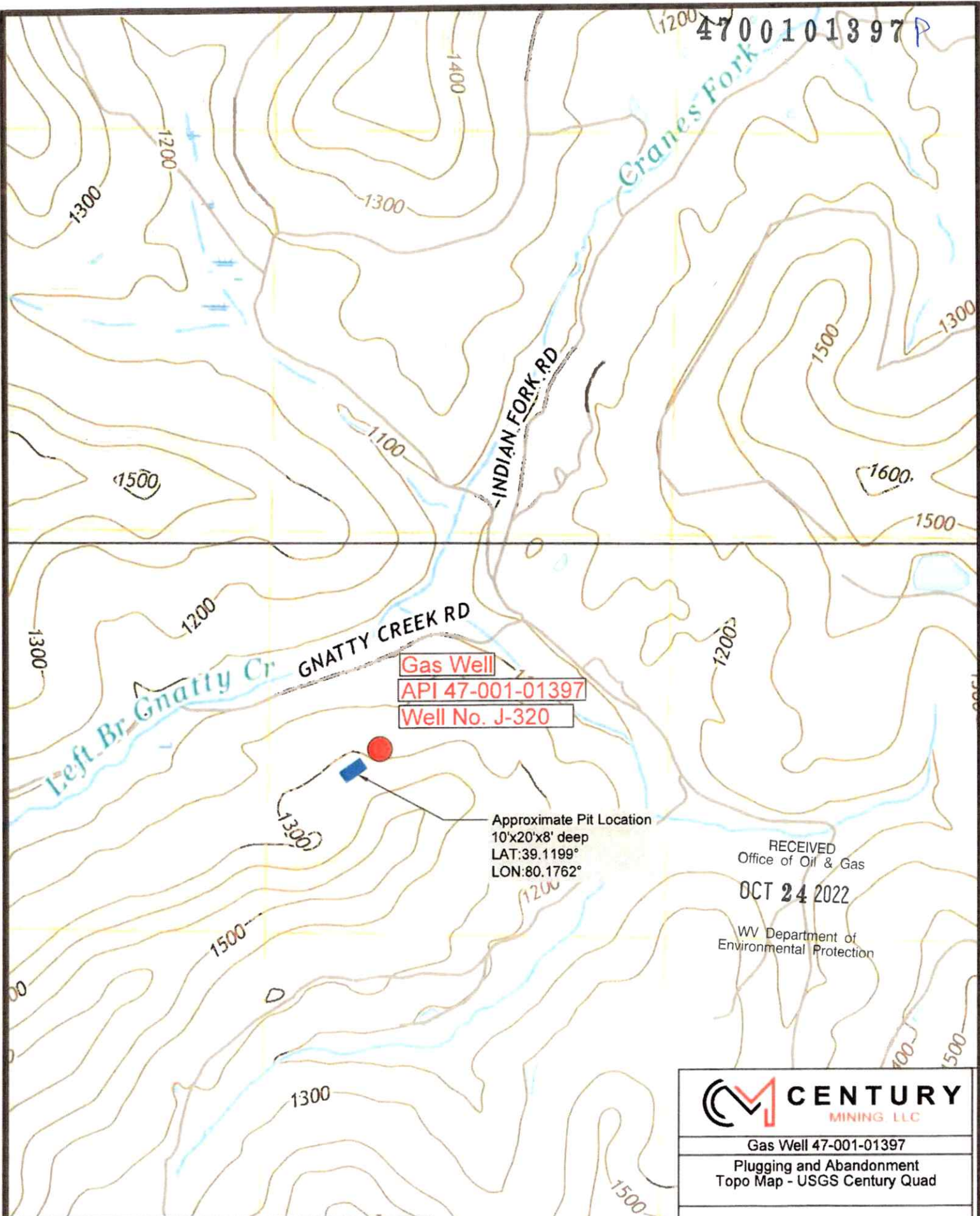


4700101397P



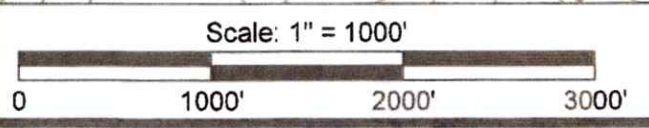
Gas Well
 API 47-001-01397
 Well No. J-320

Approximate Pit Location
 10'x20'x8' deep
 LAT:39.1199°
 LON:80.1762°

RECEIVED
 Office of Oil & Gas
 OCT 24 2022
 WV Department of
 Environmental Protection

CENTURY
 MINING LLC

Gas Well 47-001-01397
 Plugging and Abandonment
 Topo Map - USGS Century Quad



DATE: 10-14-2021	PROJ NO:
OWN BY:	TECH:
CHK BY:	DWG NAME:
FIELD BOOK:	PS: 1/1
CONTOUR INTERVAL: N/A	SHEET: 1/1

11/04/2022