

WW-7
8-30-06



West Virginia Department of Environmental Protection
Office of Oil and Gas

WELL LOCATION FORM: GPS

API: 47-001-02873 WELL NO.: Coal Quest 2

FARM NAME: BECKWITH LUMBER COMPANY

RESPONSIBLE PARTY NAME: Summit Appalachia Operating

COUNTY: Barbour DISTRICT: Pleasant

QUADRANGLE: Philippi

SURFACE OWNER: See Attachement *BECKWITH LUMBER COMPANY*
SAMUEL MAXLE

ROYALTY OWNER: See Attachment

UTM GPS NORTHING: 4341896

UTM GPS EASTING: 577129 GPS ELEVATION: 1304.10

The Responsible Party named above has chosen to submit GPS coordinates in lieu of preparing a new well location plat for a plugging permit or assigned API number on the above well. The Office of Oil and Gas will not accept GPS coordinates that do not meet the following requirements:

1. Datum: NAD 1983, Zone: 17 North, Coordinate Units: meters, Altitude: height above mean sea level (MSL) – meters.
2. Accuracy to Datum – 3.05 meters
3. Data Collection Method:

Survey grade GPS ____: Post Processed Differential ____
Real-Time Differential ____

Mapping Grade GPS : Post Processed Differential ____
Real-Time Differential ____

4. **Letter size copy of the topography map showing the well location.**

I the undersigned, hereby certify this data is correct to the best of my knowledge and belief and shows all the information required by law and the regulations issued and prescribed by the Office of Oil and Gas.

[Signature]
Signature

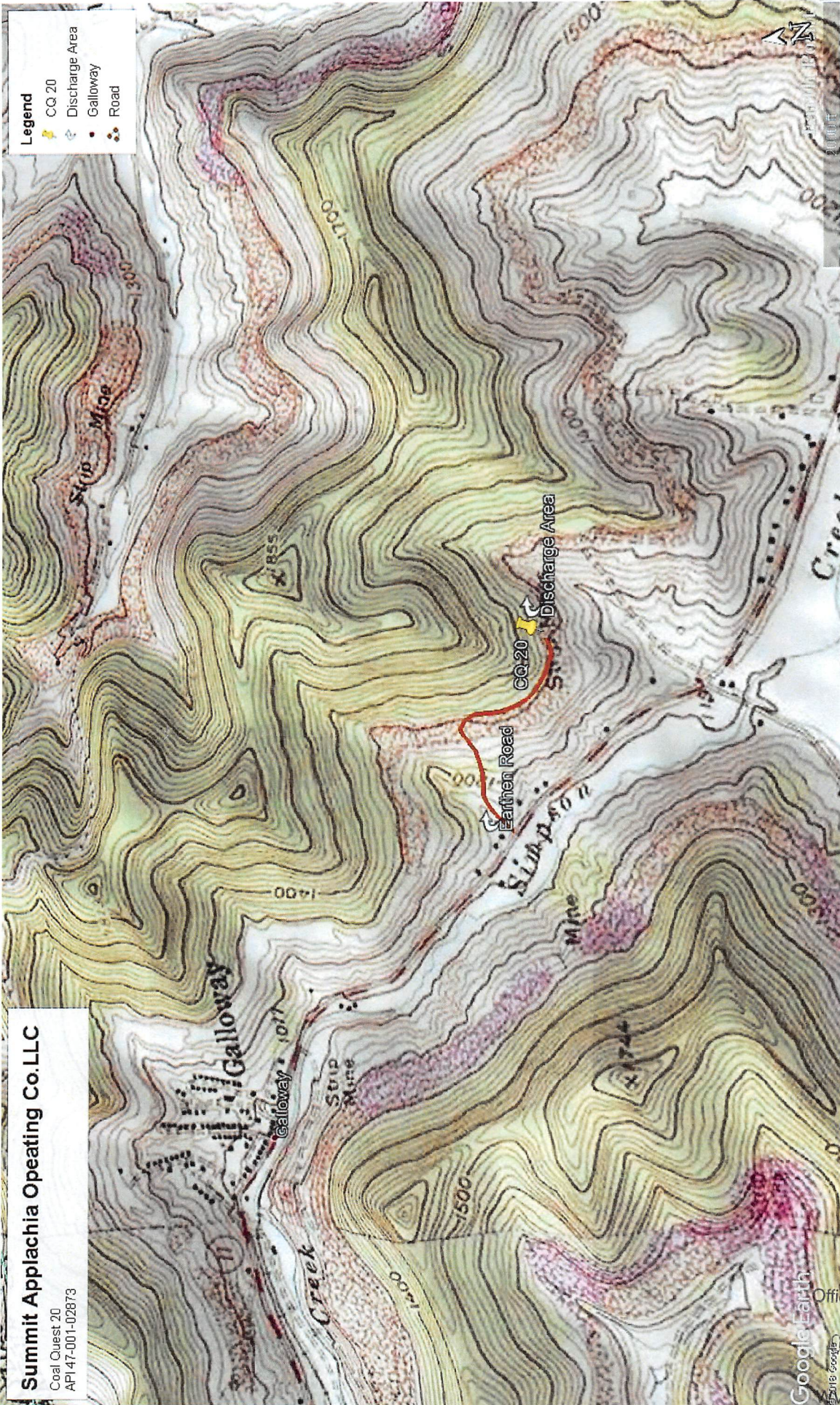
SR. Production F
Title

9-3-19
Date

RECEIVED
Office of Oil and Gas

OCT 01 2019

WV Department of
Environmental Protection



Summit Appalachia Operating Co. LLC

Coal Quest 20
API 47-001-02873

RECEIVED
Office of Oil and Gas
OCT 01 2019
Department of
Environmental Protection