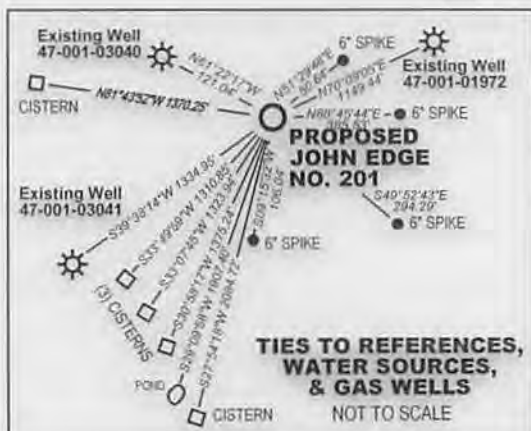
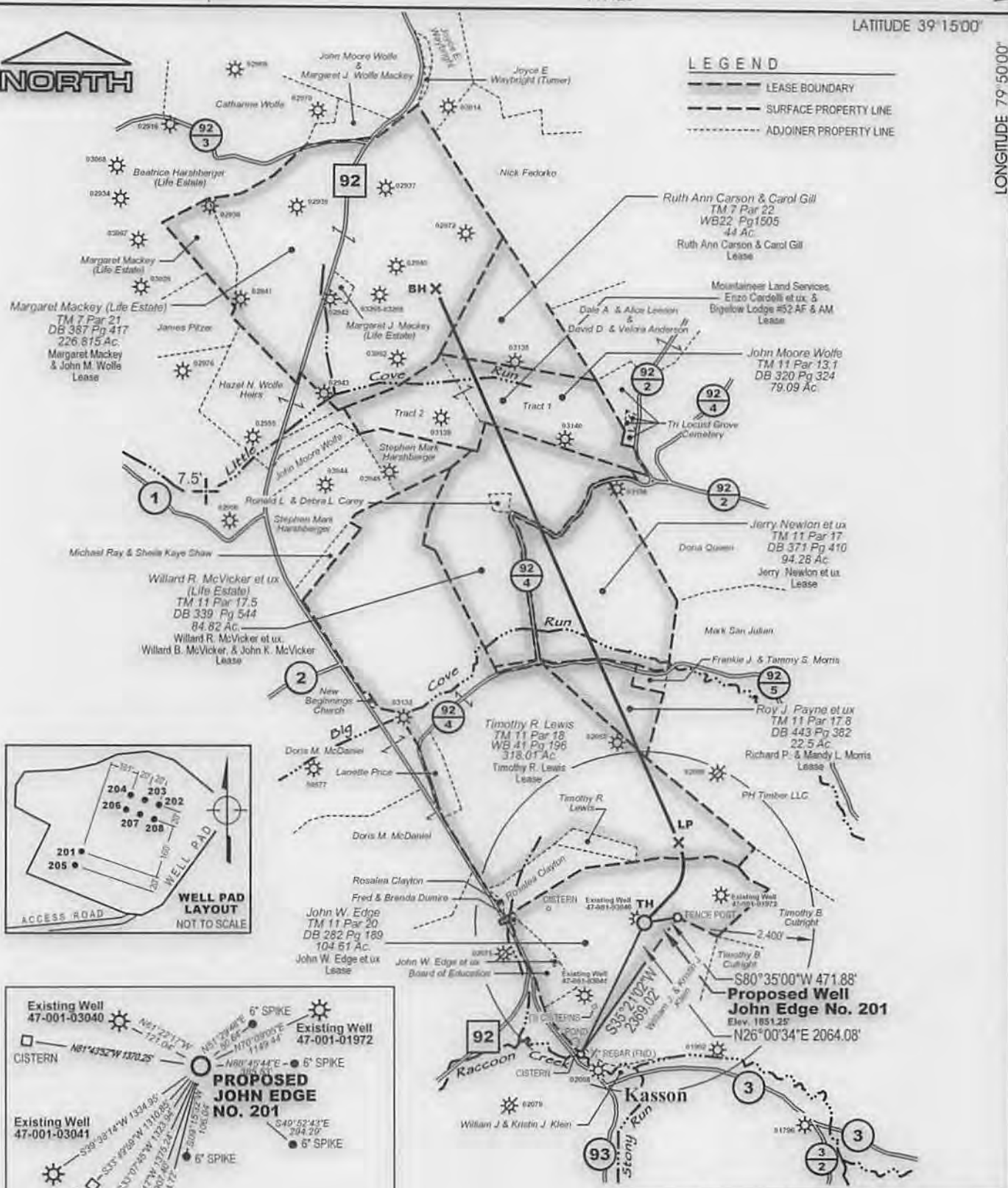




LEGEND

- LEASE BOUNDARY
- SURFACE PROPERTY LINE
- ADJOINER PROPERTY LINE



| Well ID | UTM Zone-17 nad83 (meters) | WV North State Plane nad83 (feet) | Latitude / Longitude (WGS84) |
|--------------------|----------------------------|-----------------------------------|--------------------------------|
| John Edge No. 201 | N434304.151 E597221.85 | N266554.53 E1862877.11 | N39°13'52.43" E79°52'24.88" |
| Top Hole (TH) | N434376.28 E597363.23 | N267681.36 E1863159.81 | N39°14'03.59" E79°52'18.81" |
| Landing Point (LP) | N4345734.43 E596269.10 | N275442.41 E1859997.60 | N39°15'20.15" E79°53'03.23" |



MSES consultants, inc.
 P. O. Drawer 190, Clarksburg, WV 27301-0190
 (304) 624-9700
 FILE NO. 13-284-Edge#201 Well Plat
 SCALE 1" = 2000' DRAWN BY SARC
 MIN. DEGREE OF ACCURACY 1 in 200
 PROVEN SOURCE OF ELEVATION:
GPS (SURVEY GRADE)

I, the undersigned, hereby certify that this plat is correct to the best of my knowledge and belief, and that it shows all information required by law and the rules issued and prescribed by the department of mineral resources.
 (SIGNED) _____
 R.P.E. _____ P.S. 2029

STATE OF WEST VIRGINIA
 DEPARTMENT OF MINES
 OIL AND GAS DIVISION

DATE JANUARY 27 20 14
 OPERATOR'S WELL NO. JOHN EDGE NO. 201
47 001 03327 H6A
 STATE COUNTY PERMIT NO.
 API WELL NO.



WELL TYPE : OIL GAS LIQUID INJECTION WASTE DISPOSAL
 IF "GAS", PRODUCTION STORAGE DEEP SHALLOW

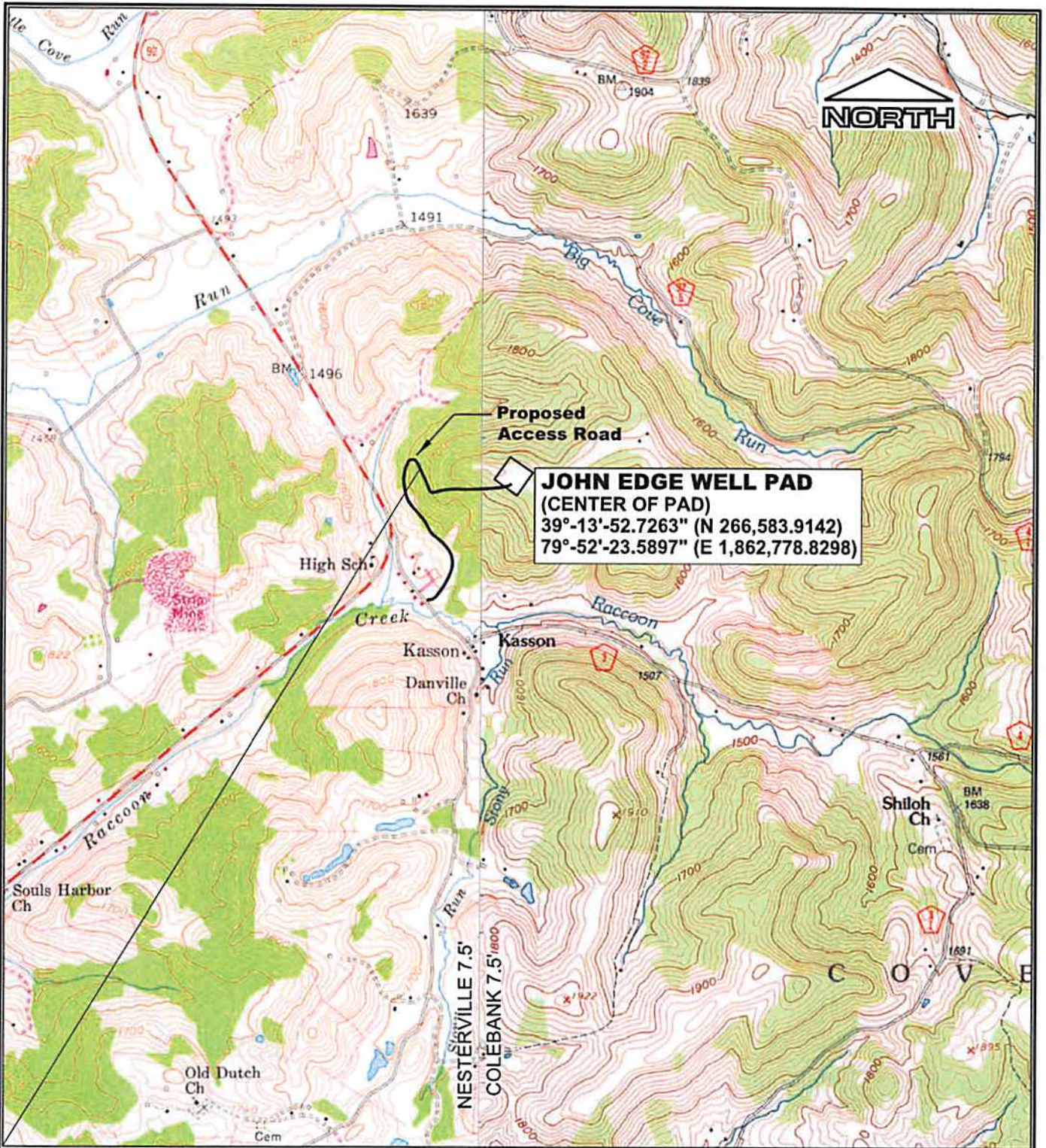
LOCATION : ELEVATION 1851.25' WATERSHED RACCOON CREEK QUADRANGLE COLEBANK, W V 7.5'
 DISTRICT COVE COUNTY BARBOUR NEAREST TOWN KASSON

SURFACE OWNER JOHN W. EDGE ACREAGE 104.61
 OIL & GAS ROYALTY OWNER JOHN W. EDGE ET UX LEASE NO. _____ LEASE ACREAGE 104.61

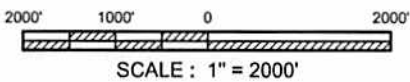
PROPOSED WORK : DRILL CONVERT DRILL DEEPER REDRILL FRACTURE OR STIMULATE
 PLUG OFF OLD FORMATION PERFORATE NEW FORMATION CLEAN OUT AND REPLUG
 OTHER PHYSICAL CHANGE IN WELL (SPECIFY) _____ PLUG AND ABANDON

TARGET FORMATION MARCELLUS ESTIMATED DEPTH 8,196' TVD 17,315' MD

WELL OPERATOR MOUNTAINEER KEYSTONE LLC DESIGNATED AGENT NATHAN SKEEN
 ADDRESS 1111 VAN VOORHIS ROAD, SUITE G ADDRESS 1111 VAN VOORHIS ROAD, SUITE G
MORGANTOWN, WV 26505 MORGANTOWN, WV 26505



JOHN EDGE WELL PAD
 (CENTER OF PAD)
 39°-13'-52.7263" (N 266,583.9142)
 79°-52'-23.5897" (E 1,862,778.8298)



REFERENCE
 U.S.G.S TOPOGRAPHIC MAPS 7.5'
 COLEBANK, WV 1995
 NESTERVILLE, W.V. 1958, P.I. 1976

MOUNTAINEER KEYSTONE, LLC

**PROPOSED JOHN EDGE WELL PAD
 LOCATION MAP**

| | | | |
|------------|-----|---|-------|
| Drawn by | RLR | NOV 14 2013 | 11/13 |
| Engineer | DDT | | 11/13 |
| Checked by | RVS | | 11/13 |
| | | WV Department of Environmental Protection | Date |

Scale: AS SHOWN

Prepared by *MSES Environmental* consultants, inc.

FIGURE 1