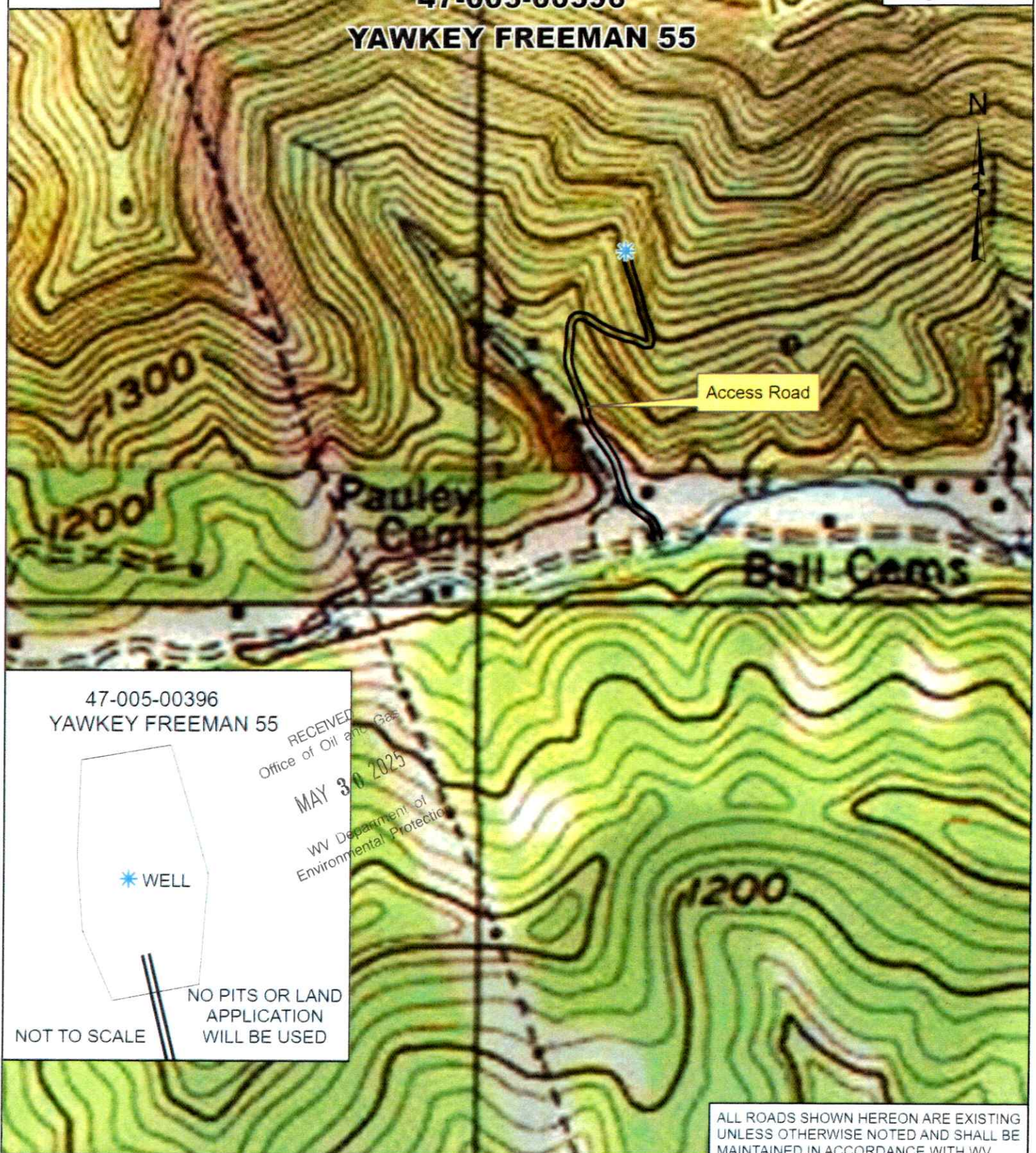


## YAWKEY FREEMAN 55



47-005-00396  
YAWKEY FREEMAN 55

RECEIVED  
Office of Oil and Gas  
MAY 30 2025  
WV Department of  
Environmental Protection

\* WELL

NOT TO SCALE

NO PITS OR LAND  
APPLICATION  
WILL BE USED

**GREYLOCK**  
ENERGY

Greylock Conventional, LLC

500 Corporate Landing Charleston, WV 25311  
304-925-6100 - [www.greylockenergy.com](http://www.greylockenergy.com)

Date: 4/24/2025

0 150 300 600 900 1,200



Feet

1:6,000

TOPO SECTION OF USGS  
MADISON 7.5' QUADRANGLE



ALL ROADS SHOWN HEREON ARE EXISTING  
UNLESS OTHERWISE NOTED AND SHALL BE  
MAINTAINED IN ACCORDANCE WITH WV  
D.E.P. OIL AND GAS BMP MANUAL  
ENTRANCES AT COUNTY/STATE ROADS  
SHALL BE MAINTAINED WITH WV D.O.T.  
REGULATION. SEPARATE PERMITS MAY  
BE REQUIRED BY D.O.T.

EARTHWORK CONTRACTORS ARE  
RESPONSIBLE FOR NOTIFICATION TO THE  
OPERATOR AND INSPECTOR PRIOR TO ANY  
DEVIATION FROM THE PLAN

06/13/2025



Well Location Map for  
47-005-00396  
YAWKEY FREEMAN 55

Northing: 4206415.6628  
Easting: 425179.0099  
Elevation: 1,195 ft

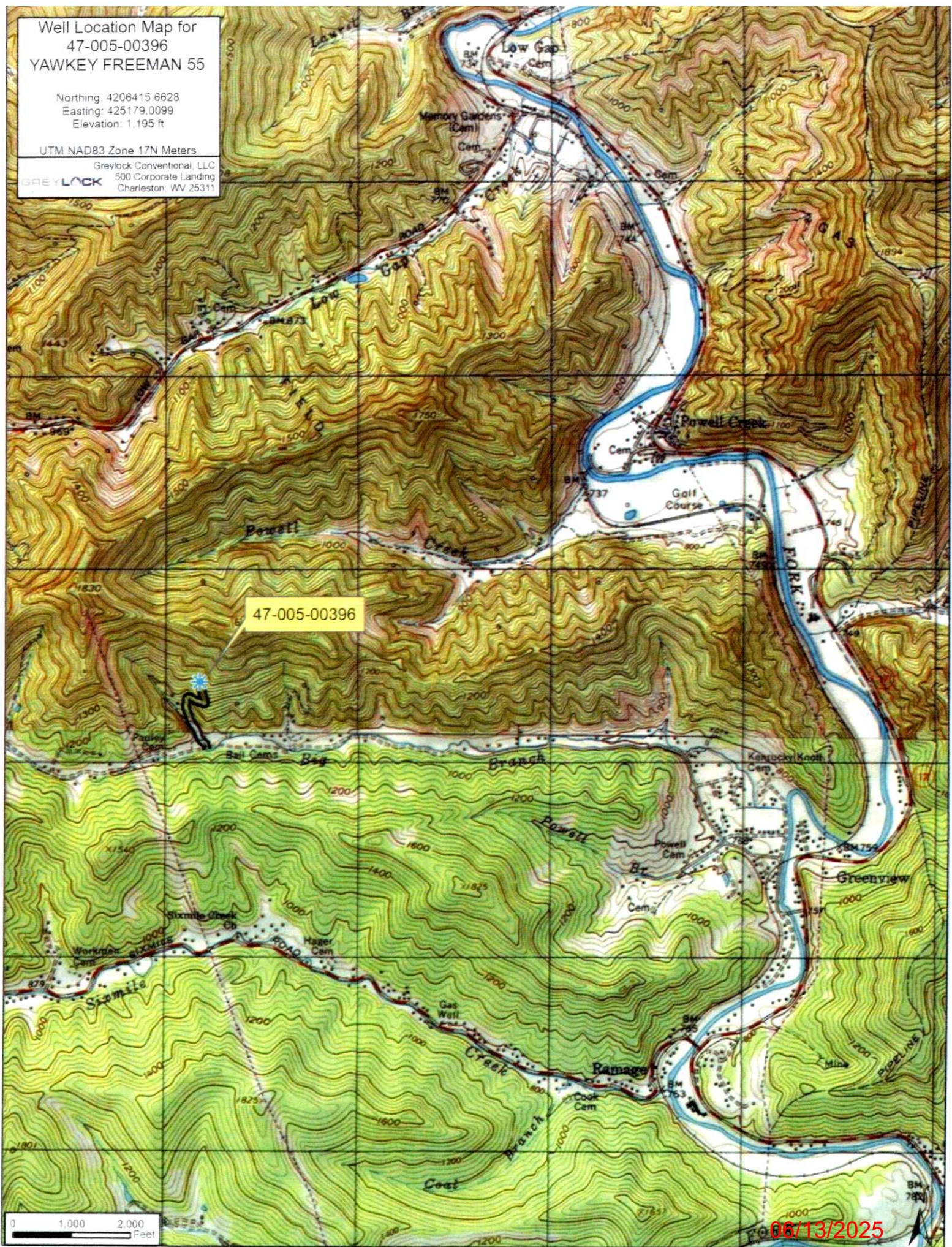
UTM NAD83 Zone 17N Meters

Greylock Conventional, LLC  
500 Corporate Landing  
Charleston, WV 25311

47-005-00396

0 1,000 2,000  
Feet

06/13/2025







West Virginia Department of Environmental Protection  
Office of Oil and Gas  
**WELL LOCATION FORM: GPS**

API: 47-005-00396 WELL NO.: 55  
FARM NAME: YAWKEY FREEMAN  
RESPONSIBLE PARTY NAME: Greylock Conventional, LLC  
COUNTY: Boone DISTRICT: Washington  
QUADRANGLE: Madison  
SURFACE OWNER: Greylock Conventional, LLC.  
ROYALTY OWNER: \_\_\_\_\_  
UTM GPS NORTHING: 4206415.6628  
UTM GPS EASTING: 425179.0099 GPS ELEVATION: 1,195 ft

The Responsible Party named above has chosen to submit GPS coordinates in lieu of preparing a new well location plat for a plugging permit or assigned API number on the above well. The Office of Oil and Gas will not accept GPS coordinates that do not meet the following requirements:

1. Datum: NAD 1983, Zone: 17 North, Coordinate Units: meters, Altitude: height above mean sea level (MSL) – meters.

2. Accuracy to Datum – 3.05 meters

3. Data Collection Method:

Survey grade GPS \_\_\_\_: Post Processed Differential \_\_\_\_

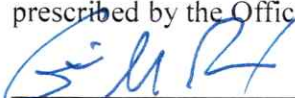
Real-Time Differential \_\_\_\_

Mapping Grade GPS X: Post Processed Differential \_\_\_\_

Real-Time Differential X

4. **Letter size copy of the topography map showing the well location.**

I the undersigned, hereby certify this data is correct to the best of my knowledge and belief and shows all the information required by law and the regulations issued and prescribed by the Office of Oil and Gas.

  
Signature

Asset Development Manager  
Title

6/1/25  
Date

RECEIVED  
Office of Oil and Gas  
MAY 30 2025  
DEPARTMENT OF  
Environmental Protection

06/13/2025