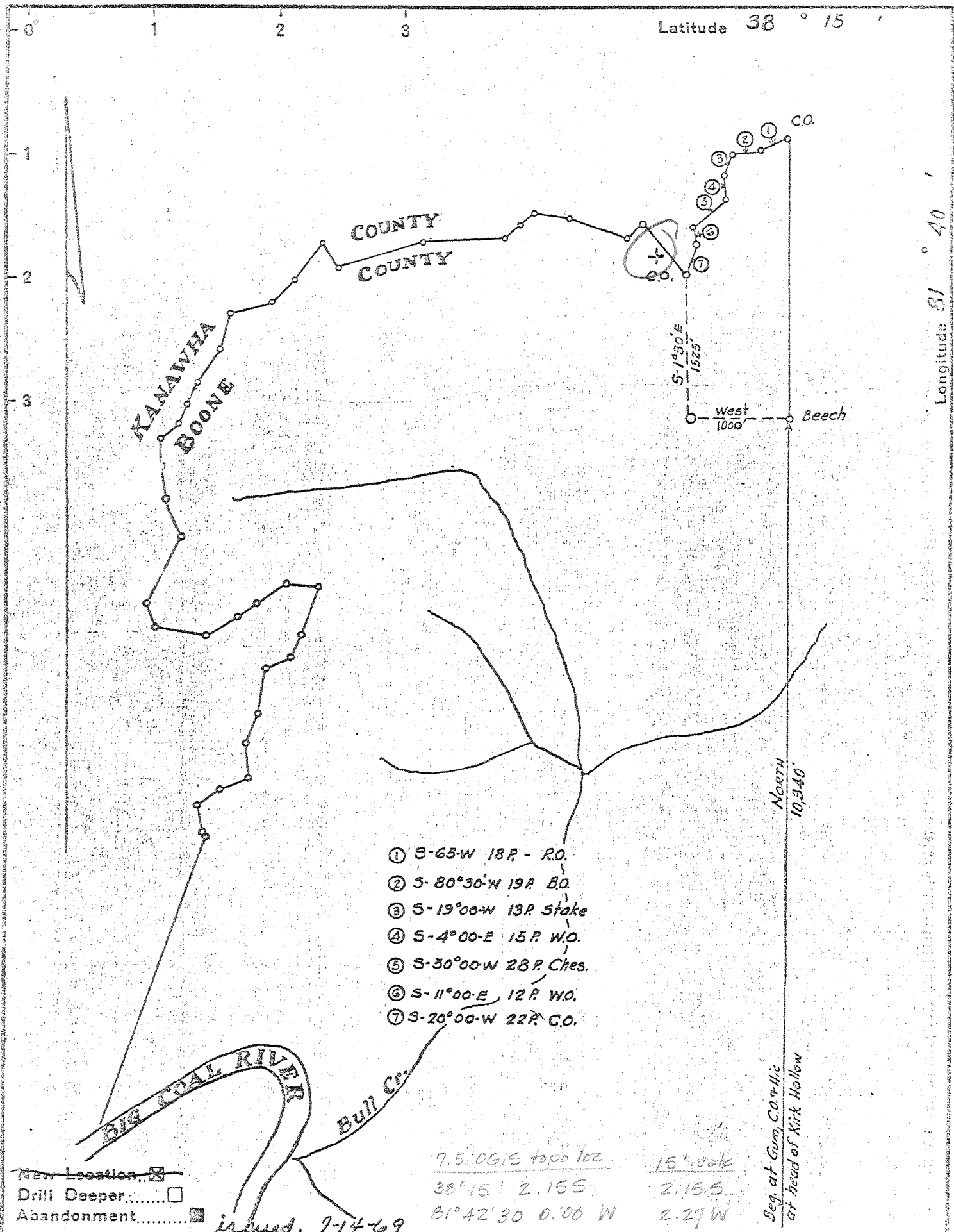


44690



- ① S-65°W 18 P. - R.O.
- ② S-80°30'W 19 P. B.O.
- ③ S-19°00'W 13 P. Stake
- ④ S-4°00'E 15 P. W.O.
- ⑤ S-30°00'W 28 P. Ches.
- ⑥ S-11°00'E 12 P. W.O.
- ⑦ S-20°00'W 22 P. C.O.

7.5' 06/5 topo loc	15' 00' stake
35° 15' 2.155	2.155
81° 42' 30 0.00 W	2.27 W

New Location
 Drill Deeper
 Abandonment

in used, 7-14-69

Company BLUE CREEK GAS CO.
COLUMBIAN CARBON CO.
 Address Box 1244 CHARLESTON W.V.
 Farm BULL CREEK COAL & LAND CO.
 Tract _____ Acres 2000 Lease No. C-27
 Well (Farm) No. 14 Serial No. 50464
 Elevation (Spirit Level) 1033.03
 Quadrangle PEYTONA NW
 County BOONE District PEYTONA
 Engineer C. J. Branham
 Engineer's Registration No. 683
 File No. _____ Drawing No. _____
 Date Aug 23, 1960 Scale 1" = 1320'

STATE OF WEST VIRGINIA
 DEPARTMENT OF MINES
 OIL AND GAS DIVISION
 CHARLESTON

WELL LOCATION MAP
 FILE NO. B00-472-P

+ Denotes location of well on United States Topographic Maps, scale 1 to 62,500, latitude and longitude lines being represented by border lines as shown.
 - Denotes one inch spaces on border line of original tracing.

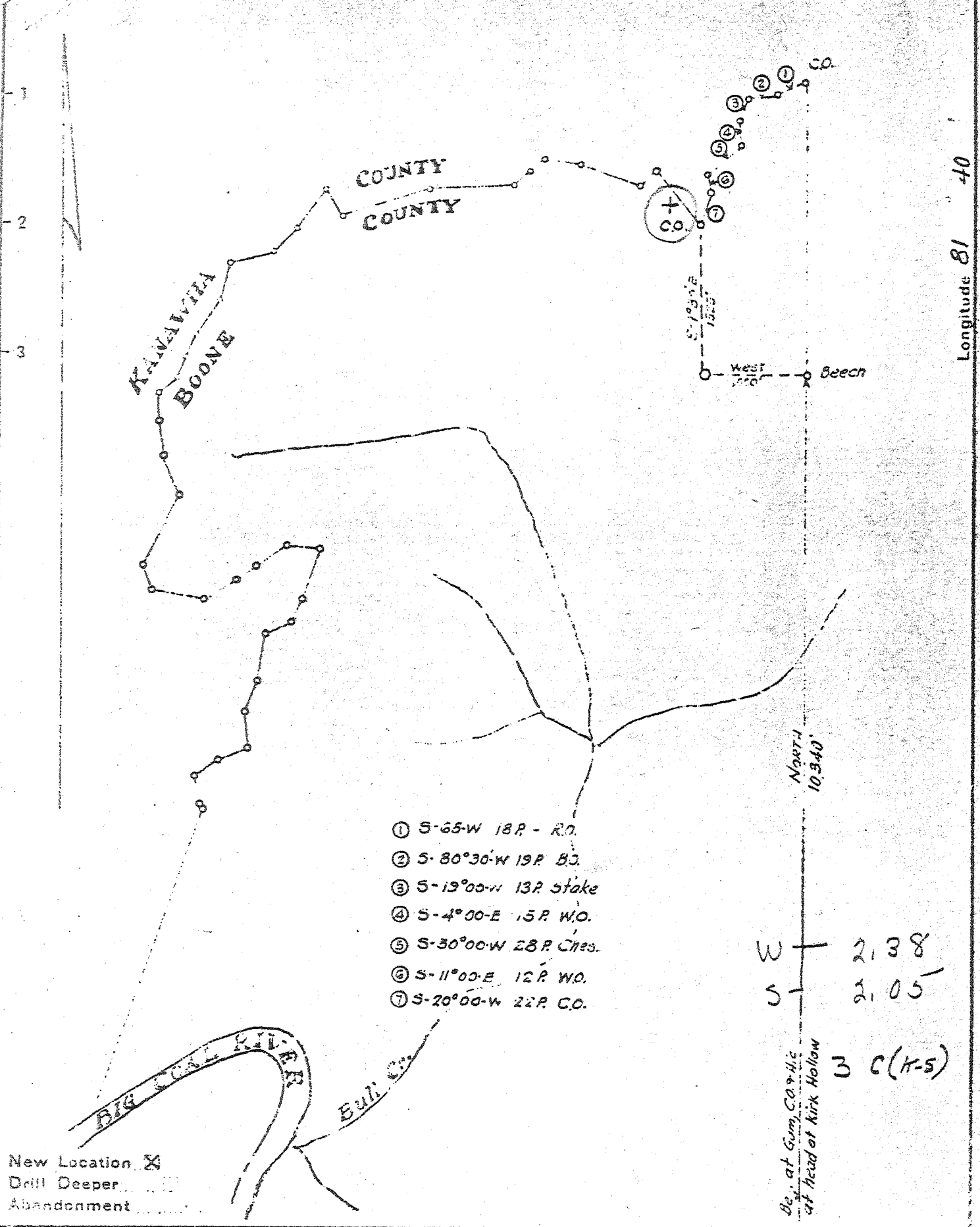
DEEP WELL

4

P

Latitude 38 15

Longitude 81 40



Company COLUMBIAN CARBON CO.
 Address Box 1240 CHARLESTON W.V.
 Farm BULL CREEK CALIBLANE CO.
 Tract _____ Acres 2000 Lease No. C-27
 Well (Farm) No. 14 Serial No. _____
 Elevation (Spirit Level) ~~1028.03~~ 1009' DE
 Quadrangle PEYTONA - NW
 County BOONE District PEYTONA
 Engineer C.C. Branham
 Engineer's Registration No. 683
 File No. _____ Drawing No. _____
 Date Aug 23, 1940 Scale 1" = 1320'

STATE OF WEST VIRGINIA
 DEPARTMENT OF MINES
 OIL AND GAS DIVISION
 CHARLESTON

WELL LOCATION MAP
 FILE NO. Boo-472

+ Denotes location of well on United States Topographic Maps, scale 1 to 62,500. latitude and longitude lines being represented by border lines as shown.
 - Denotes one inch spaces on border line of original tracing.

WEST VIRGINIA DEPARTMENT OF MINES
OIL & GAS DIVISION
W E L L R E C O R D

Permit No. Bcc-472
Peytona Quad.

Gas Well

Company Columbian Carbon Co.
Address Box 1240, Charleston, W. Va.
Farm Bull Creek Coal Land Co. ACRES 2000
Location Bull Creek
Well No. 14 (GW-464) ELEV. 1009.0 DF
District Peytona - Boone County
Surface Bull Creek Coal Land Co.,
Address 886 Ellicott Sq., Buffalo, N. Y.
Mineral Same & Dickinson Fuel Company
 Charleston, W. Va.

Commenced 9/30/40
Completed 1/13/41
Shot Acidized 1/27/41 - from 1452-1552
Volume 350,000 c.f.
Rock Pressure 80 lbs. 24 hrs.
Fresh Water 317
Salt Water 700 - hole full

CASING & TUBING

14	40-7	40-7
10-3/4	527-7	pulled
8-5/8	1425-10	1425-10
7	4958-5	91-5
3	1610-1	1610-1

Packer - Spang
Size of - 8-1/4x3x5
Depth set - 1438

Sand	0	100	
Slate	100	125	
Sand	125	160	
Slate	160	196	
Coal	196	200	
Slate	200	317	W 317
Coal	317	320	
Slate	320	354	
Coal	354	359	
Slate	359	380	
Sand	380	445	
Slate	445	460	
Sand	460	484	
Broken Sand	484	500	
Slate & Shells	500	565	
Sand	565	583	
Slate	583	630	
Salt Sand	630	820	SW 700 HF
Slate	820	825	
Sand	825	1232	
Slate	1232	1238	
Lime	1238	1255	
Slate & Shells	1255	1285	
Sand	1285	1289	
Lime	1289	1300	
Sand MAXTON	1300	1354	
Little Lime	1354	1380	
Pencil Cave	1380	1384	
Lime Shells	1384	1390	
Slate	1390	1392	
Black Lime	1392	1405	SLM
Big Lime	1405	1590	SLM
Big Injun Sand	1590	1640	345
Slate	1640	1710	
Wbir Shells, sandy	1710	1865	
Slate & Shells	1865	2052	
Berea Sand	2052	2062	
Lime	2062	2180	
Slate & Shells	2180	3240	
Limy Shale	3240	3530	
Brown Shale	3530	3820	
White Slate	3820	4245	

Shale	4245	4310	
Lime	4310	4320	
Shells	4320	4395	
Black Shale	4395	4435	
Slate	4435	4500	
Shale	4500	4546	SLM
Corniferous Lime	SLM 4546	4639	SLM
Oriskany Sand	SLM 4639	4649	SLM
Lime H&ORCO	SLM 4649	4731	SLM
Total Depth		4731	SLM

PAYS: 1452-58
1520-20 1/2
1552-57

Plugged back to 1603

CEMENT RECORD:

11/13/40 - Cemented 8-5/8 casing. Ran 9 sacks Aquagel - mixed 4% ahead of cement - mixed 110 sacks Alpha cement mixed with 3% Aquagel (3 sacks). Circulated around 8-5/8 casing.
F. M. Mills, Cementor - Halliburton Oil Well Cementing Co.

12/31/40 - Cemented 7" casing. Dumped 15 sacks of Alpha cement with dump bailer. Picked pipe up 30' and set back on bottom. 65' solid cement in pipe. Cemented by Columbian Carbon Co.

485