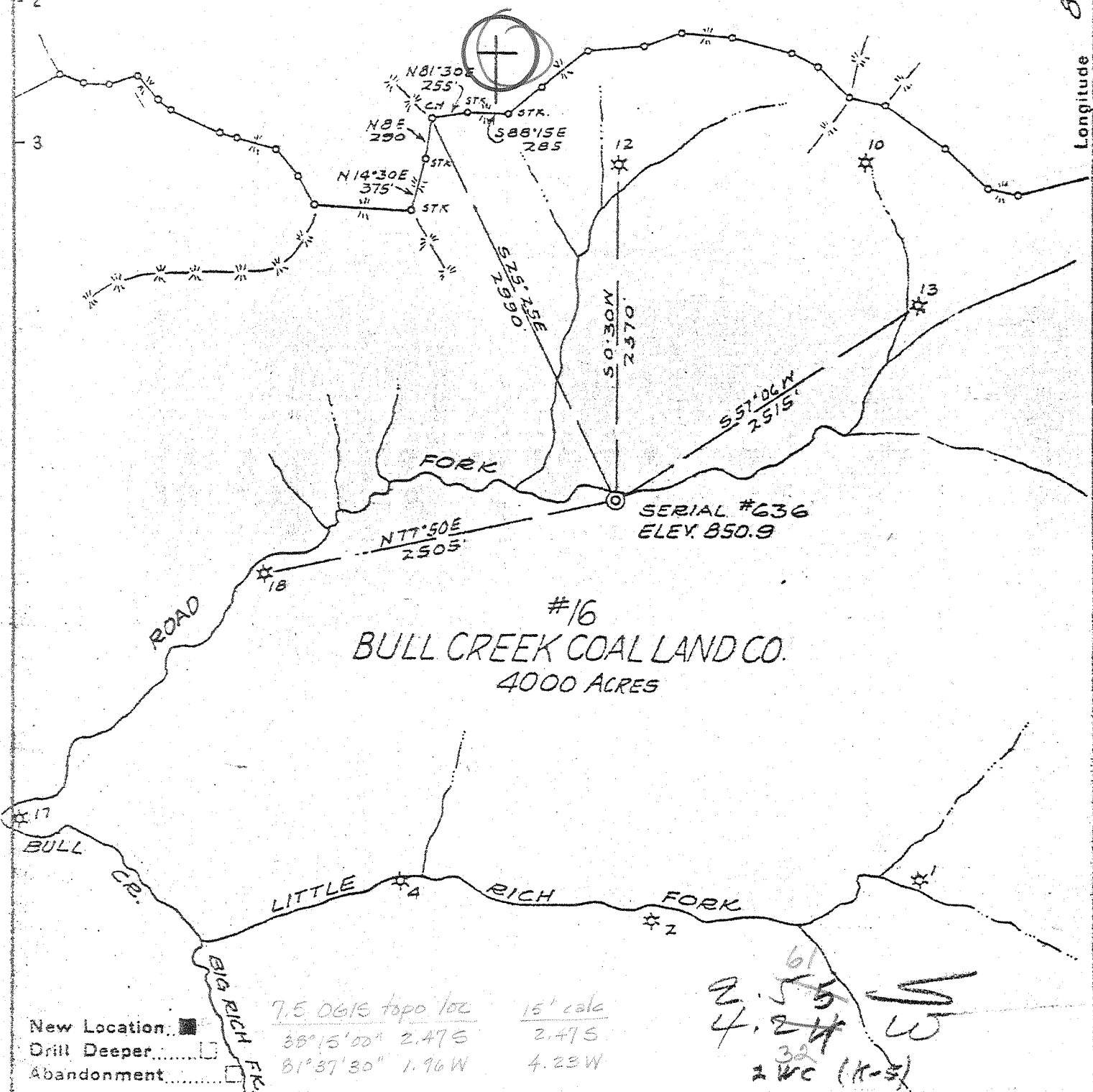


Deep

Latitude 38 15'

PENNSYLVANIA & VIRGINIA COAL & COKE CO.

Longitude 81 35'



#16
 BULL CREEK COAL LAND CO.
 4000 ACRES

New Location
 Drill Deeper
 Abandonment

7.5 0615 topo loc	15' calc
38°15'00" 2.47S	2.47S
81°37'30" 1.96W	4.23W

61
 2.55
 4.24
 32
 2 WC (K-5)

Company THE OWENS LIBBEY-OWENS GAS DEPT.
 Address BOX 1375 CHARLESTON WVA.
 Farm BULL CREEK COAL LAND CO.
 Tract _____ Acres 4000 Lease No. 16
 Well (Farm) No. 19 Serial No. 636
 Elevation (Spirit Level) 850.9
 Quadrangle PEYTONA - NC
 County BOONE District PEYTONA
 Engineer T.S. Conway
 Engineer's Registration No. 269
 File No. _____ Drawing No. _____
 Date MARCH 2 1942 Scale 1" = 1000 FT.

REARWOOD FOREST
 STATE OF WEST VIRGINIA
 DEPARTMENT OF MINES
 OIL AND GAS DIVISION
 CHARLESTON

WELL LOCATION MAP
 FILE NO. B00-537

+ Denotes location of well on United States Topographic Maps, scale 1 to 62,500, latitude and longitude lines being represented by border lines as shown.

- Denotes one inch spaces on border line of original tracing.

66-238 Brodwell

WEST VIRGINIA DEPARTMENT OF MINES
OIL & GAS DIVISION
W E L L R E C O R D

Permit No. 800-537		Gas Well
Company	The Owens, Libbey-Owens Gas Dept.	CASING & TUBING
Address	P.O. Box 2111, Charleston, W.Va.	10 87 87
Farm	Bull Creek Coal Land Co. Acres 4000	8 1/2 1176 1176
Location	Road Fork of Bull Creek	6 5/8 4360 4360
Well No	636 Elev. 850.9'	3 5157 5157
District	Poytona Boone County	
Surface	Bull Cr. Coal Ld. Co., 806 Elliott Sq. Buffalo, N.Y.	Spang-Anchor Packer Size-6 5/8x2x36"
Mineral	Same	Depth 5084'
Commenced	April 4, 1942	Perf. top 5117
Completed	July 10, 1942	Perf. bot 5127
Shot	7-8-42	Depth 5105-5125, 40 qts. Glycerine
Volume	202,000 C.F.	Coal at 55'--36"
Rock Pressure	1870 lbs. 24 hrs.	
Fresh Water	120' 2 bbls. pr. hr.;	
Salt Water	4990' 1 bbls. pr. hr.	

Clay	Y	S	0	8	Shells	Gr	H	3000	3035
Slate	Dk	S	8	55	Slate&Shells	Gr	S	3035	3118
Coal	Dk	S	55	58	Shells	Gr	H	3118	3141
Slate	Dk	S	58	78	Slate & Shells	Gr	S	3141	3264
Sand	Wh	H	78	124	Shale	Br	S	3264	3314
Slate	Dk	S	124	154	Shale& Shells	Br	S	3314	3361
Sand	Wh	S	154	158	Shell	Dk	H	3361	3372
Sand	Dk	H	158	188	Shale	Br	S	3372	3538
Sand	Wh	H	188	277	Shell	Dk	H	3538	3549
Slate	Dk	S	277	313	Shale&Shells	Br	S	3549	3591
Sand	Gr	H	313	377	Slate & Shells	Lt	S	3591	4028
Slate	Wh	S	377	393	Shale	Br	S	4028	4078
Sand	Wh	H	393	547	Shale & Shells	Br	S	4078	4124
Slate	Dk	S	547	552	Shell	Dk	H	4124	4149
Sand	Gr	H	552	638	Shale	Br	S	4149	4177
Slate	Dk	S	638	658	Shale & Shells	Br	S	4177	4212
Sand	Gr	H	658	760	Slate	Dk	S	4212	4261
Slate	Lt	S	760	776	Slate	Lt	S	4261	4272
Sand	Wh	H	776	803	Shale	Br	S	4272	4308
Slate	Dk	S	803	804	Slate	Bk	S	4308	4338
Shells	Gr	H	804	822	Corniferous	Gr	H	4338	4443
Sand	Wh	H	822	897	Oriskany	Wh	H	4443	4449
Slate	Dk	S	897	900	Limo Held?	Dk	H	4449	4576
Sand	Gr	H	900	966	Red Rock	S	S	4576	4579
Slate & Shells	Dk	S	966	985	Limo	Dk	H	4579	5105
Shells	Dk	H	985	999	Newburg Sand	Wh	H	5105	5125
Red Rock		S	999	1008	Limo - m.c.?	Dk	H	5125	5157
Slate	Dk	S	1008	1024	TOTAL DEPTH				5157
Shells	Lt	H	1024	1036					
Slate	Lt	S	1036	1041	Gas 158' Est. 1 million (Blew out in 4 hr)				
Slate	Dk	S	1041	1061	Gas 1275' show				
Limo - m.c.	Dk	H	1061	1107	Gas 1334-41 45 M				
Lime	Wh	H	1107	1119	Gas 4445-50' 25 M				
Lime	Dk	H	1119	1158	Gas 4470' 30 M				
Big Lime	Wh	H	1158	1314	Gas 4522' 33M				
Big Injun	Red	H	1314	1358	Gas 4667' 42 M				
Slate	Lt	S	1358	1361	Gas 5033' 54M				
Shells	Gr	H	1361	1435	Gas 5110-14 267M				
Gritty Limo	Wh	H	1435	1464					
Shells	Gr	H	1464	1504					
Slate & Shells	Gr	S	1504	1704					
Slate & Shells	Wh	S	1704	1759					
Slate	Gr	S	1759	1769					
Shale	Br	S	1769	1779					
Berea	Wh	H	1779	1784					
Slate & Shells	Dk	S	1784	1794					
Slate & Shells	Gr	H	1794	1895					
Shells	Lt	H	1895	1909					
Slate	Dk	S	1909	1926					
Slate & Shells	Lt	H	1926	1987					
Slate & Shells	Dk	M	1987	2029					
Slate & Shells	Gr	S	2029	2274					
Shells	Gr	S	2274	2314					
Slate & Shells	Gr	S	2314	3000					

545