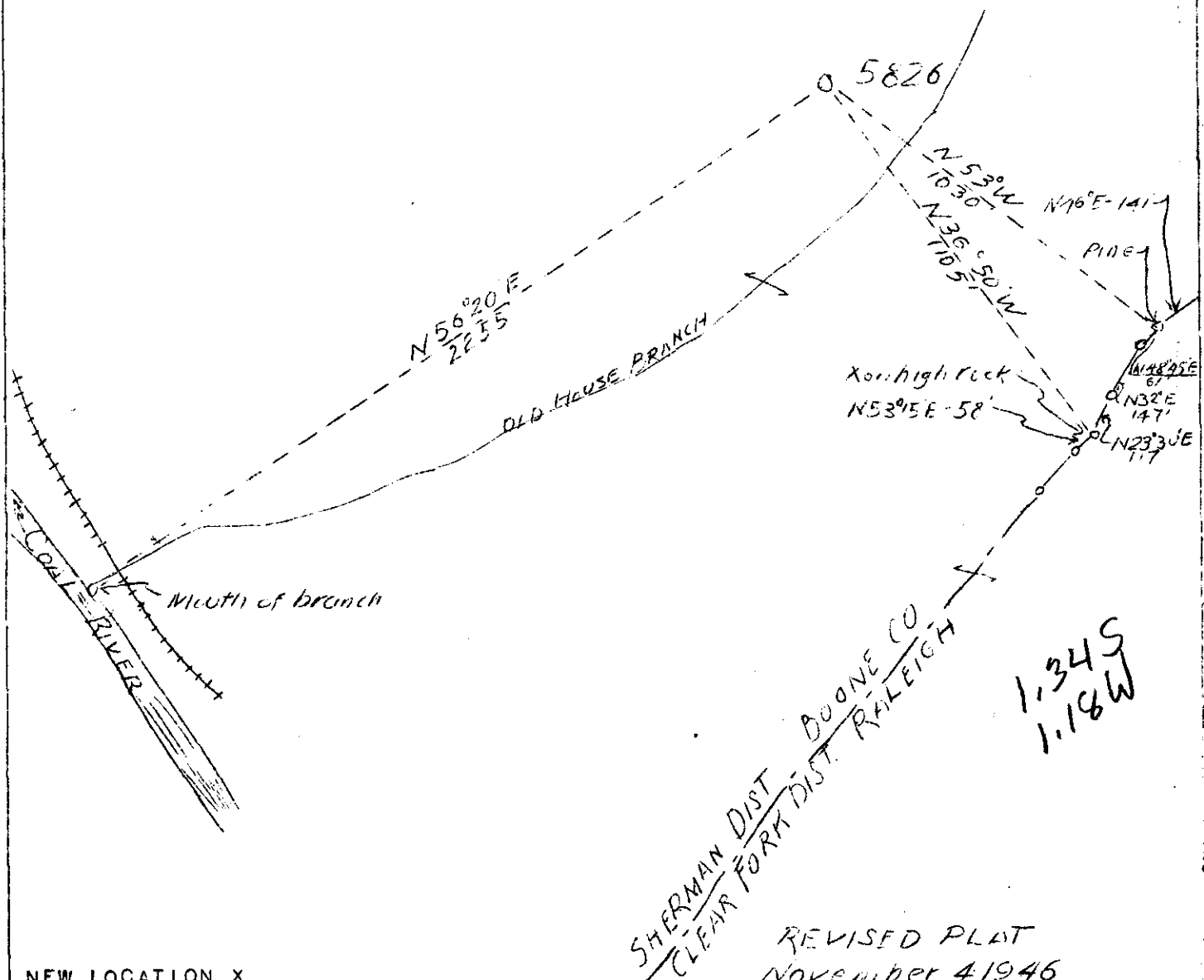


Lat 38 ° 00'

COAL RIVER MINING & LUMBER CO.



NEW LOCATION X

COMPANY UNITED FUEL GAS CO.
 ADDRESS CHARLESTON, W. VA.
 FARM COAL RIVER MINING & LBR. CO.
 TRACT ACRES 3000 LEASE NO. 17120
 WELL (FARM) NO. 2 SERIAL NO. 5826
 ELEVATION (S.L.) 1392.17'
 QUADRANGLE BALD KNOB
 COUNTY BOONE DISTRICT SHERMAN
 ENGINEER G. H. MOORE
 ENGINEER'S REG. NO. 662
 FILE NO. 66-33 DRAWING NO. _____
 DATE 10/16/46 SCALE 1"=400'

REVISIED PLAT
NOVEMBER 4 1946

STATE OF WEST VIRGINIA
 DEPARTMENT OF MINES
 OIL AND GAS DIVISION
 CHARLESTON

WELL LOCATION MAP
FILE NO. BOO - 753

+ DENOTES LOCATION OF WELL ON U.S. TOPOGRAPHIC MAPS, SCALE 1 TO 62,500, LATITUDE AND LONGITUDE LINES BEING REPRESENTED BY BORDER LINES AS SHOWN.
 - DENOTES ONE INCH SPACES ON BORDER LINE OF ORIGINAL TRACING.

WEST VIRGINIA DEPARTMENT OF MINES
OIL & GAS DIVISION
WELL RECORD

Permit No. Boo 753
Wald Knob Quad.

Gas Well
CASING & TUBING

Company	United Fuel Gas Company		
Address	P.O. Box 1273, Charleston 25, W.Va.	10 1/2	774'9 Same
Farm	Coal River Mining &/Lumber A 300C	8 5/8	1858'10 "
Location	Big Coal River #2	7	2388'10 "
Well No.	5826	Elev. 1392.17 GR	
District	Sherman	Boone County	
Surface	John V. Ray. Kan. Valley Bldg., Chas., W.Va.		
Mineral	1-8-48		
Commenced	7-3-48		
Completed	7-8-48		
Date shot	7-8-48	Depth 2790 1/2 to 2918 1/2	Coal at 134' 60"
	with 1300# gel.		199' 48"; 687' 36"
Open flow	30/10ths W in 3"		737' 24"
Volume	520 M Weir		
Rock Pressure	424 lbs. 66 hrs.		

Surface	0	13	Gas 2200' No test
Sand	13	134	Gas 2426' Big Lime show
Coal	134	139	Weir Gas 2793-2803 6/10 W 1" 26 M
Slate	139	160	Blew down to 4/10 W 1" 21 M
Sand	160	199	Weir Gas 2853-2860 10/10 W 1" 33 M
Coal	199	203	Weir Gas 2866-2874 14/10 W 1" 39 M
Slate	203	221	Blew down to 10/10 W 1" 33 M
Sand	221	238	Weir Gas 2874-2880 12/10 W 1" 37 M
Slate	238	260	
Sand	260	377	Test B.S. 16/10 W 1" 42 M
Slate	377	400	Shot 7-8-48 with 1300# gel. from
Sand	400	607	2790 1/2-2918 1/2
Slate	607	687	Test 3 hrs. A.S. 30/10 W 3" 520 M
Coal	687	690	
Slate	690	757	Open flow 520 M Weir
Coal	757	759	66 Hr. R.P. 424#
Sand	759	993	
Grampus	993	1066	
Slate	1066	1086	
Grampus	1086	1300	
Salt Sand	1300	1360	
Slate	1360	1370	
Sand	1370	1467	
Slate	1467	1495	
Hard Sand	1495	1550	
Slate & Shells	1550	1565	
Sand	1565	1718	
Slate & Shells	1718	1768	
Red Rock	1768	1776	
Slate & Shells	1776	1832	
Red Rock	1832	1838	
Shell	1838	1855	
Slate & Shells	1855	1880	
Red Rock	1880	1940	
Slate & Shells	1940	1970	
Red Rock	1970	1995	
Maxon Sand	1995	2011	
Slate & Shells	2011	2101	
Red Rock	2101	2150	
Lime Sandy	2150	2205	
Slate & Shells	2205	2294	
Lime	2294	2312	
Pencil Slate	2312	2356	
Big Lime	2356	2600	
Injun Sand	2600	2708	
Slate & Shells	2708	2750	
Weir Sand	2750	2918 1/2	7907
Slate & Shells	2907	2918 1/2	
Total Depth	2918 1/2		

JUN - 7 1949

