

FILE #: 8744-006
DRAWING #: 1
SCALE: 1" = 2000'
MINIMUM DEGREE OF ACCURACY: 1 in 2500
PROVEN SOURCE OF ELEVATION: SURVEY GRADE GPS

PLAT IS CORRECT TO THE BEST OF MY KNOWLEDGE AND BELIEF AND SHOWS ALL THE INFORMATION REQUIRED BY LAW AND THE REGULATIONS ISSUED AND PRESCRIBED BY THE DEPARTMENT OF ENVIRONMENTAL PROTECTION.

Signed: *[Signature]*
R.P.E.: _____ L.L.S.: 1969

TIMOTHY H. KINDER
LICENSED
NO. 1969
STATE OF WEST VIRGINIA
PROFESSIONAL SURVEYOR

PLACE SEAL HERE

(+) DENOTES LOCATION OF WELL ON UNITED STATES TOPOGRAPHIC MAPS WVDEP
OFFICE OF OIL & GAS
601 57TH STREET
CHARLESTON, WV 25304

Well Type: Oil Waste Disposal Production Deep
 Gas Liquid Injection Storage Shallow

WATERSHED: BIG COAL RIVER
COUNTY/DISTRICT: BOONE/PEYTONA
SURFACE OWNER: PENN VIRGINIA OPERATING CO LLC
OIL & GAS ROYALTY OWNER: EAST ENDERS (47-4184)

DRILL CONVERT DRILL DEEPER REDRILL FRACTURE OR STIMULATE
PLUG OFF OLD FORMATION PERFORATE NEW FORMATION PLUG & ABANDON
CLEAN OUT & REPLUG OTHER CHANGE (SPECIFY): _____

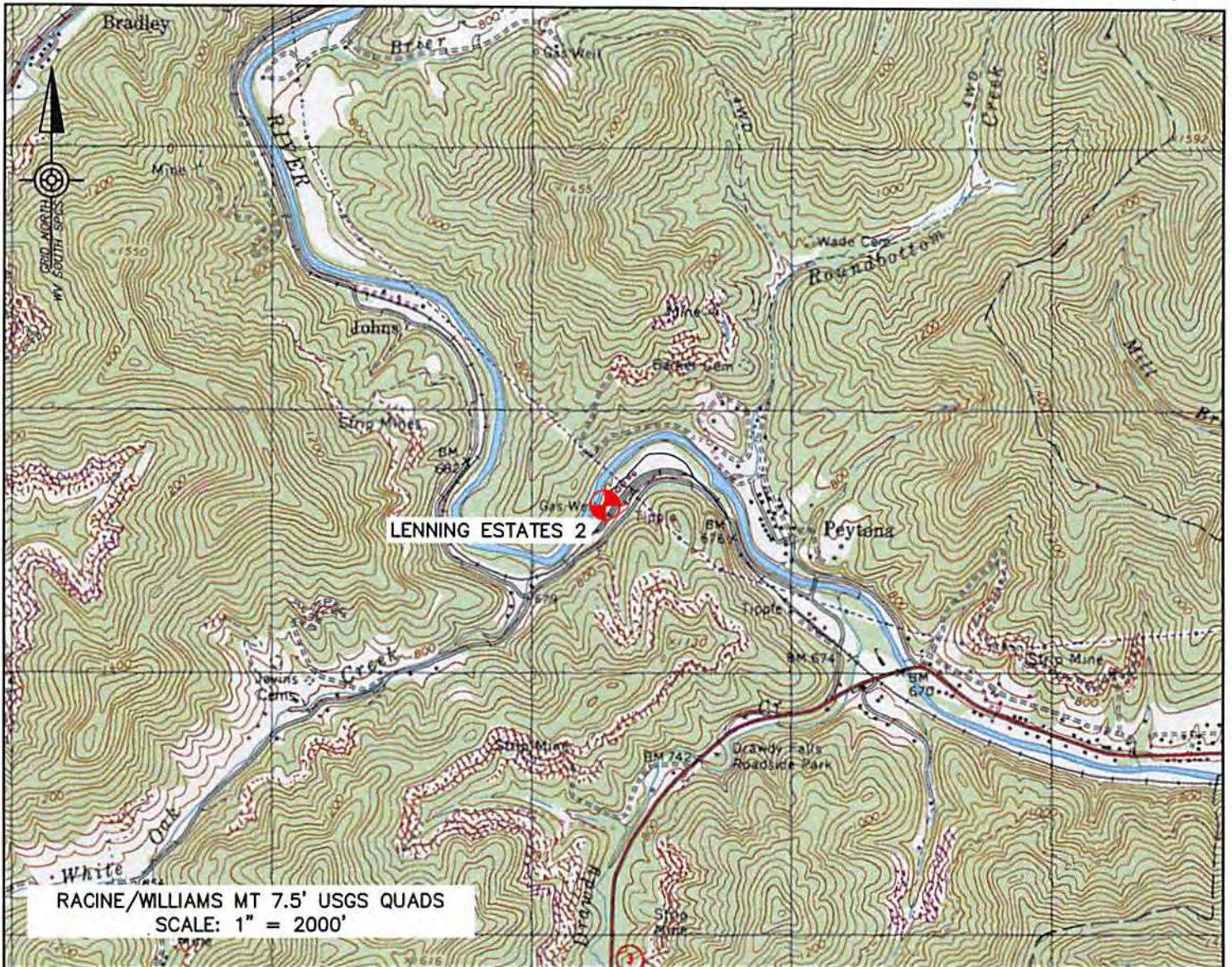
TARGET FORMATION: DEVONIAN SHALE
WELL OPERATOR CABOT OIL & GAS CORPORATION
Address FIVE PENN CENTER WEST, SUITE 401
City PITTSBURGH State PA Zip Code 15276

DATE: JUNE 19, 2014
OPERATOR'S WELL #: LENNING ESTATE 2 #315
API WELL #: 47 05 00842-D P
STATE COUNTY PERMIT

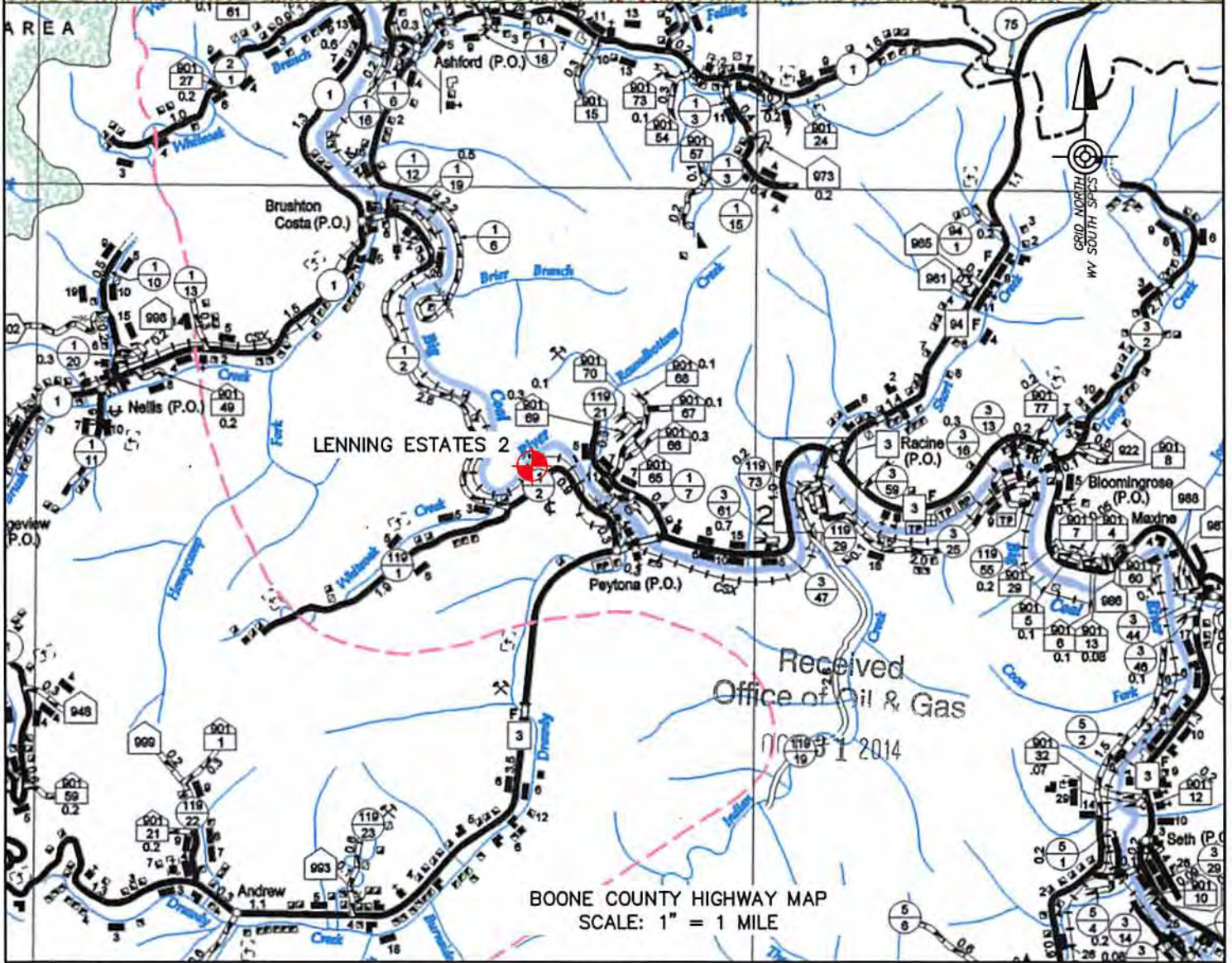
ELEVATION: 668'
QUADRANGLE: RACINE
ACREAGE: 10.718
ACREAGE: 1.820

ESTIMATED DEPTH: 1851' - 2759'
DESIGNATED AGENT WHITNEY JOHNSON
Address CABOT OIL & GAS CORPORATION, P.O. BOX 450
City GLASGOW State WV Zip 26036

FORM WW-6



RACINE/WILLIAMS MT 7.5' USGS QUADS
SCALE: 1" = 2000'



BOONE COUNTY HIGHWAY MAP
SCALE: 1" = 1 MILE

LOCATION MAP LENNING ESTATE 2

PEYTONA DISTRICT, BOONE COUNTY, WEST VIRGINIA

CABOT OIL & GAS CORPORATION
FIVE PENN CENTER WEST, SUITE 401
PITTSBURGH, PA 15276-0130
PHONE
DATE 10/16/14 BY: CHECKED BY:

Larson Design Group • Architects Engineers Surveyors
2502 Cranberry Square
Morgantown, WV 26508
PHONE 304.777.2940 TOLL FREE 877.323.6603
FAX 570.323.9902 • www.larsondesigngroup.com



Larson Design Group®

12/12/14

PROJECT NO.: 8744-006
SHEET NO.: 1