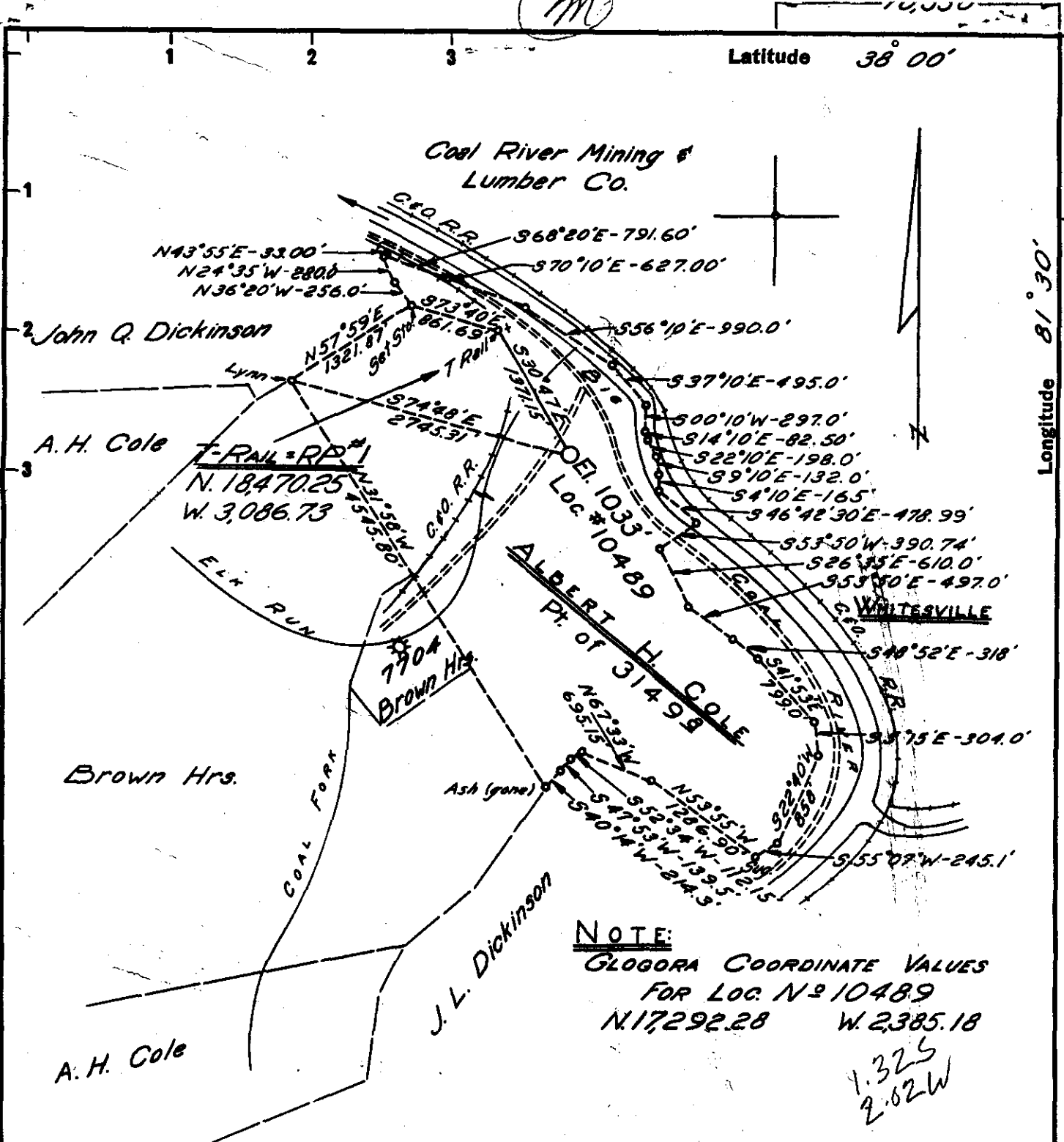


M



**NOTE:**  
 GLOGORA COORDINATE VALUES  
 FOR LOC. NO. 10489  
 N. 17,292.28    W. 2,385.18

1.325  
 2.02W

MAP SHEET 161-W, S100, W54; FB 1266, P. 37-40



New Location   
 Drill Deeper   
 Abandonment

Company HOPE NATURAL GAS CO.  
 Address CLARKSBURG, W. VA.  
 Farm ALBERT H. COLE  
 Tract \_\_\_\_\_ Acres 3149 Lease No. 68059  
 Well (Farm) No. \_\_\_\_\_ Serial No. 10489  
 Elevation (Spirit Level) 1033'  
 Quadrangle BALD KNOB (NE)  
 County BOONE District SHERMAN  
 Engineer Jackson M. Jarvis  
 Engineer's Registration No. 2397  
 File No. \_\_\_\_\_ Drawing No. \_\_\_\_\_  
 Date 3-13-63 Scale 1"=1320'

STATE OF WEST VIRGINIA  
 DEPARTMENT OF MINES  
 OIL AND GAS DIVISION  
 CHARLESTON

WELL LOCATION MAP  
 FILE NO. Boo-956

+ Denotes location of well on United States Topographic Maps, scale 1 to 62,500, latitude and longitude lines being represented by border lines as shown.

- Denotes one inch spaces on border line of original tracing.



STATE OF WEST VIRGINIA  
DEPARTMENT OF MINES  
OIL AND GAS DIVISION /

Quadrangle BALD KNOBB

Permit No. B00-956

WELL RECORD

Oil or Gas Well Gas  
(KIND)

Company Hope Natural Gas Company  
 Address Clarksburg, W. Va.  
 Farm Albert H. Cole Acres 3.149  
 Location (waters) \_\_\_\_\_  
 Well No. 10489 Elev. 1033'  
 District Sherman County Boone  
 The surface of tract is owned in fee by \_\_\_\_\_  
 Address \_\_\_\_\_  
 Mineral rights are owned by \_\_\_\_\_  
 Address \_\_\_\_\_  
 Drilling commenced 5-8-63  
 Drilling completed 5-21-63  
 Date Shot Not shot From \_\_\_\_\_ To \_\_\_\_\_  
 With \_\_\_\_\_  
 Open Flow /10ths Water in \_\_\_\_\_ Inch  
 /10ths Merc. in \_\_\_\_\_ Inch  
 Volume 64 M Cu. Ft.  
 Rock Pressure 770 lbs. 24 hrs.  
 Oil None bbls., 1st 24 hrs.  
 WELL ACIDIZED No  
 WELL FRACTURED 6-20-63

Casing and Tubing	Used in Drilling	Left in Well	Packers
Size			Kind of Packer
16			
13			Size of
<u>9-5/8"</u>	<u>1114</u>	<u>1114</u>	Depth set
8 3/4			Perf. top
6 3/4	<u>2040</u>	<u>2040</u>	Perf. bottom
<u>4 1/2"</u>	<u>2717</u>	<u>2717</u>	Perf. top
3			Perf. bottom
2			
Liners Used			

CASING CEMENTED 4 1/2" SIZE 80 No. Ft. 80 Date \_\_\_\_\_  
4 1/2" cemented with 80 bags cement  
 COAL WAS ENCOUNTERED AT 125 FEET 36 INCHES  
327 FEET 36 INCHES FEET INCHES  
 FEET INCHES FEET INCHES

RESULT AFTER TREATMENT 5,537 M  
 ROCK PRESSURE AFTER TREATMENT 808# in 14 days  
 Fresh Water See log Feet \_\_\_\_\_ Salt Water See log Feet \_\_\_\_\_

Formation	Color	Hard or Soft	Top	Bottom	Oil, Gas or Water	Depth	Remarks
		<u>-O-V-E-R-</u>					



August 21, 1963  
*Jack Bailey*  
 Hope Natural Gas

FORMATION	Open or Close Hard or Soft	TOP	BOTTOM	Steel Line Measurement	Water Found Depth	Oil Found Depth	Gas Found Depth	REMARKS
Shale		0	20					
Sand		20	73					
COAL		73	74					
Sand		74	125					
COAL		125	128					
Sand		128	200					
Shale		200	220					
Sand & Sh.		220	240					
Sand		240	305					
Sand & Sh.		305	327					
COAL		327	330		330			
Sand		330	375					
Shale & Sand		375	695		530			
Sand		695	820					
Sand & Shale		820	900					
Sand		900	990					
Shale		990	993					
Sand		993	1290		1050-55			
Sand & Shale		1290	1305					
Shale & Sand		1305	1330					
Sand & Shale		1330	1550					
Shale & Red Rock		1550	1610					
Sand & Shale		1610	1625					
MAXTON SAND		1625	1670					
Shale & Red Rock		1670	1790					
Shale, Red Rock, Lime		1790	1950					
LITTLE LIME		1950	1995					
Pencil Sh.		1995	2006					
BIG LIME		2006	2375					Set 7" Casing At 2050 K.F
Red & Gray		2375	2405					
Weir Shells		2405	2455					
WEIR SAND		2455	2685				2535-40	29/10 W 1/4" F.M. 3M
Shale		2685	2750				2580	19/10 W 1/4" F.M. 2M
	TOTAL DEPTH K.B.		2750				2610	6/10 W 1/4" F.M. 1M
	TOTAL DEPTH G.L.		2742				2640	6/10 W 1/4" F.M. 1M
							2660-65	96/10 W 1" F.M. 74M
							2750	17/10 W 3/4" F.M. 64M