



West Virginia Department of Environmental Protection  
Office of Oil and Gas  
**WELL LOCATION FORM: GPS**

API: 47-005-01004 WELL NO.: 52  
FARM NAME: LaFollette  
RESPONSIBLE PARTY NAME: Gary E. Acord  
COUNTY: Boone DISTRICT: Sherman  
QUADRANGLE: Sylvester  
SURFACE OWNER: LaFollette  
ROYALTY OWNER: LaFollette  
UTM GPS NORTHING: 4215823.5 meters (NAD-83)  
UTM GPS EASTING: 451282.8 meters (NAD-83) GPS ELEVATION: 308.8 meters (1012')

The Responsible Party named above has chosen to submit GPS coordinates in lieu of preparing a new well location plat for a plugging permit or assigned API number on the above well. The Office of Oil and Gas will not accept GPS coordinates that do not meet the following requirements:

1. Datum: NAD 1983, Zone: 17 North, Coordinate Units: meters, Altitude: height above mean sea level (MSL) – meters.
2. Accuracy to Datum – 3.05 meters
3. Data Collection Method:  
Survey grade GPS X: Post Processed Differential \_\_\_\_\_  
Real-Time Differential \_\_\_\_\_  
Mapping Grade GPS \_\_\_\_\_: Post Processed Differential \_\_\_\_\_  
Real-Time Differential \_\_\_\_\_

4. Letter size copy of the topography map showing the well location.

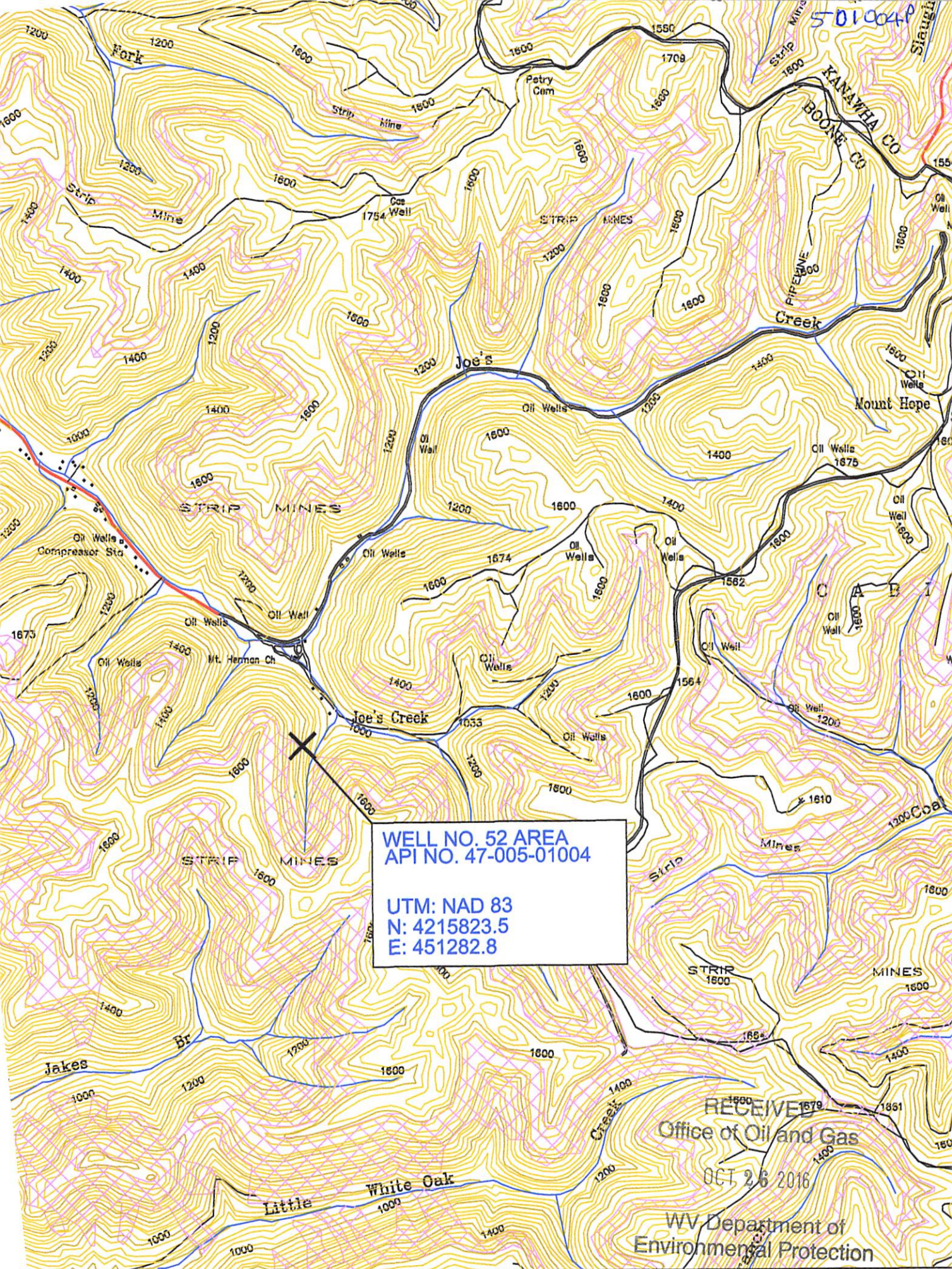
I the undersigned, hereby certify this data is correct to the best of my knowledge and belief and shows all the information required by law and the regulations issued and prescribed by the Office of Oil and Gas.

RECEIVED  
Office of Oil and Gas  
OCT 26 2016  
WV Department of  
Environmental Protection

Gary E. Acord, PEPS ENGINEER  
Signature Title

10-24-16  
Date





WELL NO. 52 AREA  
API NO. 47-005-01004  
UTM: NAD 83  
N: 4215823.5  
E: 451282.8

RECEIVED  
Office of Oil and Gas  
OCT 26 2016

WV Department of  
Environmental Protection

ANTHER CREEK MINING, LLC.  
AMERICAN EAGLE MINE  
Well No. 52  
API No. 47-005-01004  
Scale: 1"=2000'

*[Signature]* SLYVESTER QUADRANGLE  
WEST VIRGINIA - BOONE CO.  
7.5 MINUTE SERIES (TOPOGRAPHIC)  
1/11/2016