

WW-7  
8-30-06



West Virginia Department of Environmental Protection  
Office of Oil and Gas  
WELL LOCATION FORM: GPS

API: 47-005-01167 WELL NO.: 458631

FARM NAME: A.C. Canterbury 7195

RESPONSIBLE PARTY NAME: Alliance Petroleum Co. LLC

COUNTY: Boone DISTRICT: Washington

QUADRANGLE: Madison

SURFACE OWNER: Donald and Sheryl Buckner

ROYALTY OWNER: Greenbrier Land Co.

UTM GPS NORTHING: 423,712.7

(865')

UTM GPS EASTING: 4,208,177.7 GPS ELEVATION: 263.6 meters

The Responsible Party named above has chosen to submit GPS coordinates in lieu of preparing a new well location plat for a plugging permit or assigned API number on the above well. The Office of Oil and Gas will not accept GPS coordinates that do not meet the following requirements:

1. Datum: NAD 1983, Zone: 17 North, Coordinate Units: meters, Altitude: height above mean sea level (MSL) – meters.
2. Accuracy to Datum – 3.05 meters
3. Data Collection Method:

Survey grade GPS  : Post Processed Differential

Real-Time Differential

Mapping Grade GPS  : Post Processed Differential

Real-Time Differential

4. Letter size copy of the topography map showing the well location.

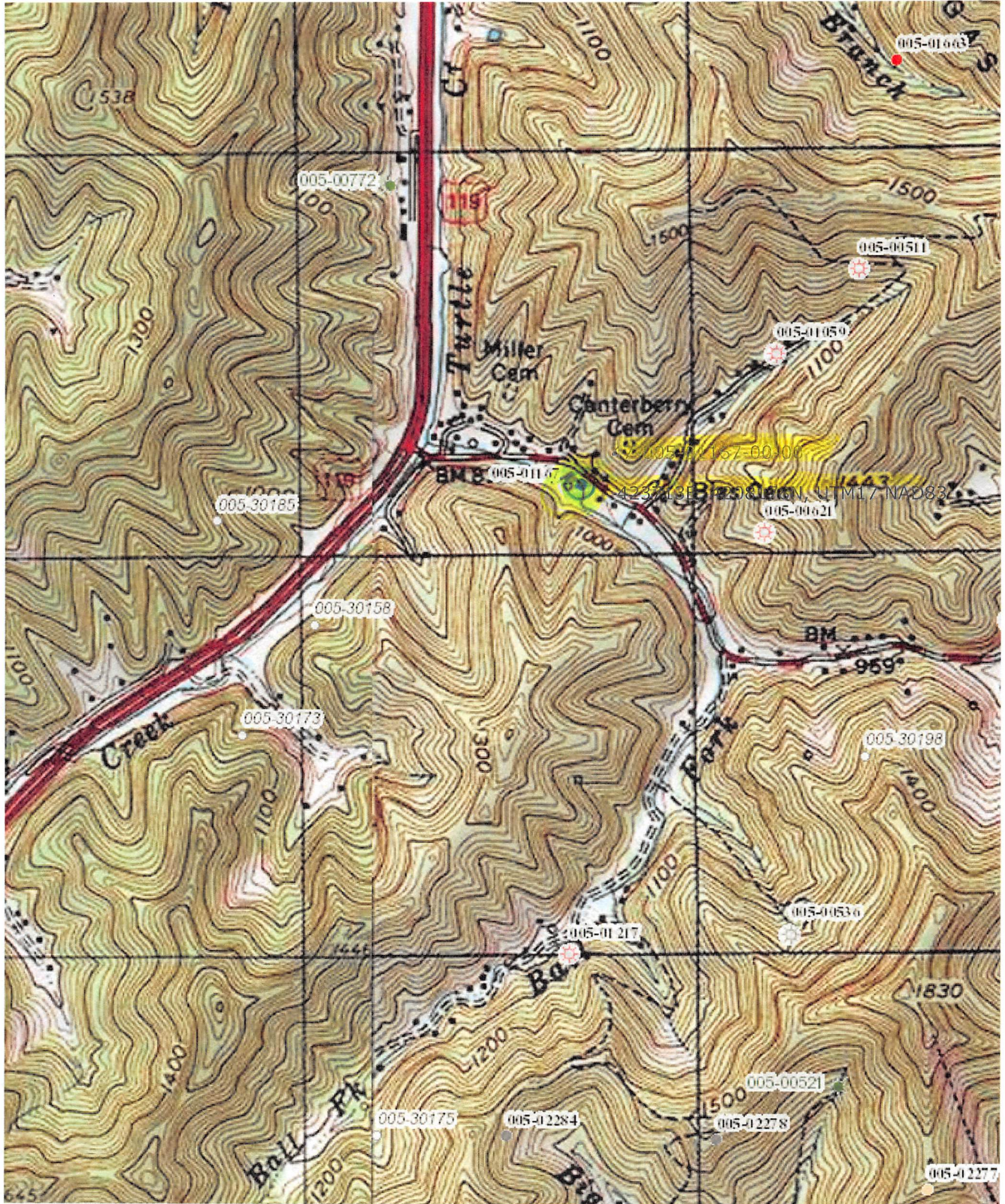
I the undersigned, hereby certify this data is correct to the best of my knowledge and belief and shows all the information required by law and the regulations issued and prescribed by the Office of Oil and Gas.

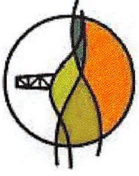
[Signature]  
Signature

Engineer III  
Title

8-20-19  
Date

RECEIVED  
Office of Oil and Gas  
AUG 27 2019  
WV Department of  
Environmental Protection





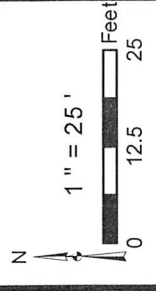
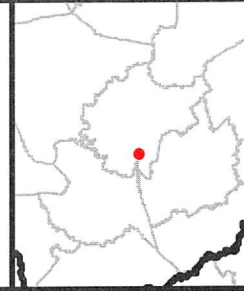
Diversified Gas & Oil Corporation  
100 Diversified Way  
Pikeville KY, 41051

458631

Plugging Map

**Legend**

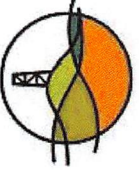
- Well
- ✕ Sediment Control
- Access Road
- ▨ Pits
- ▭ Pad



Well No.: 458631  
 UTM 83-17 Meters  
 North: 4237.12.75  
 East: 4208177.73  
 Elev.: 263.6

Secondary Pit

Primary Pit



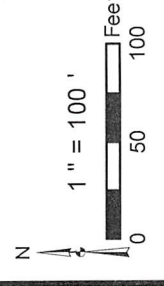
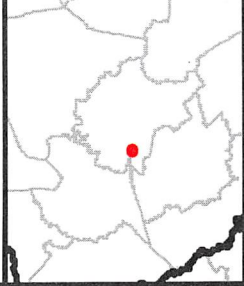
Diversified Gas & Oil Corporation  
100 Diversified Way  
Pikeville KY, 41051

458631

Plugging Map

Legend

- Well
- ⊗ Sediment Control
- Access Road
- ▨ Pits
- ▭ Pad



Well No.: 458631  
 UTM83-17, Meters  
 North: 4237,12.75  
 East: 4208,177.73  
 Elev.: 263.6

Secondary Pit  
 Primary Pit

Sources: Esri, DigitalGlobe, GeoEye, Earthstar Geographics, CNES/Airbus DS, USDA, USGS, AeroGRID, IGN, and the GIS User Community