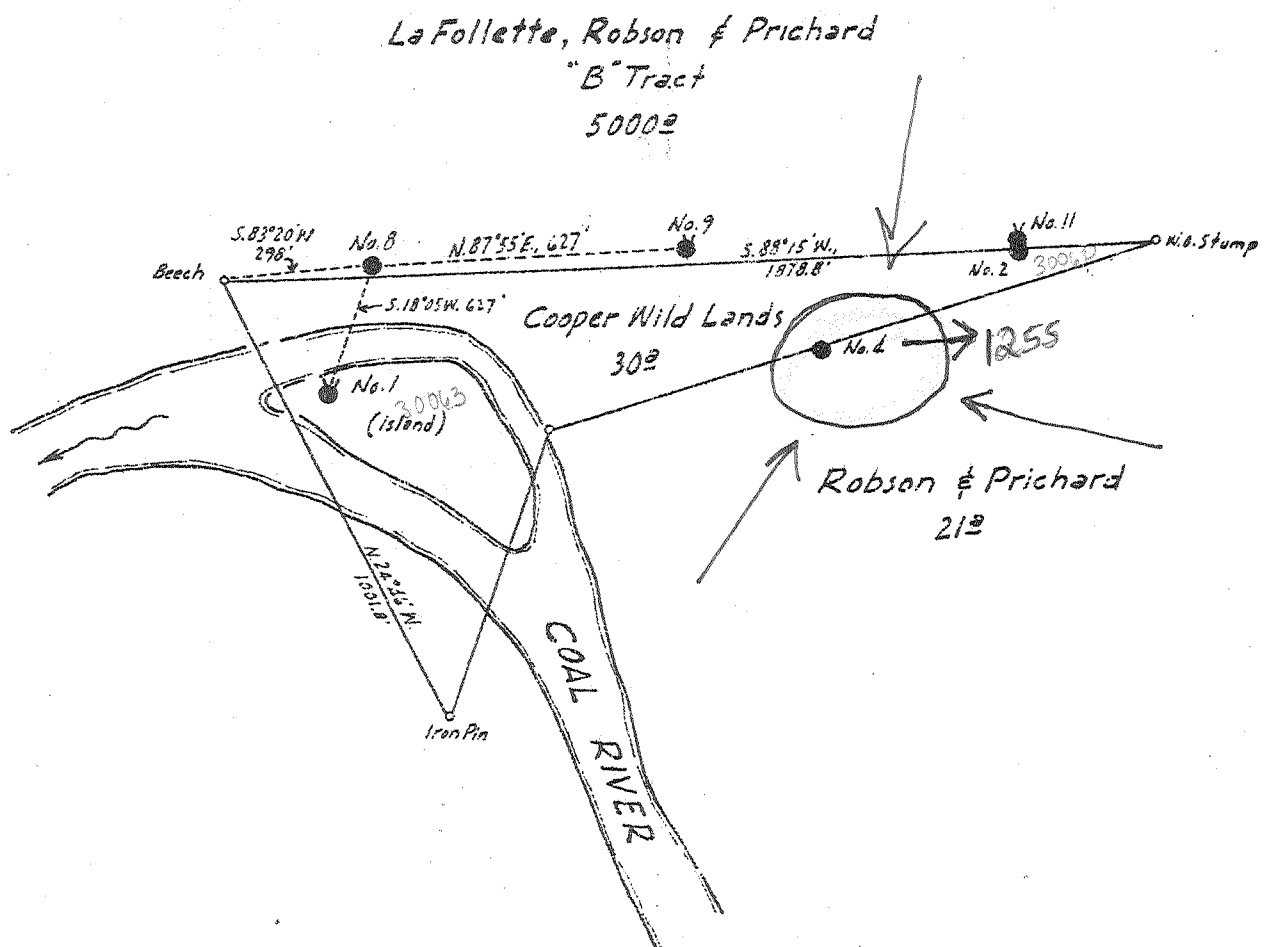


Latitude 38 05' +

Longitude 81 35'



Utms
 448862.47
 4214973.03
 wa 7/9/2010

Info for S-30119
 NOT 1255

New Location
 Drill Deeper
 Abandonment

Company The Pure Oil Company
 Address Newark, Ohio
 Farm LaFollette, Robson & Prichard
 Tract "B" Acres 5000 Lease No. 224-226
 Well (Farm) No. 8 Serial No. 212
 Elevation (Spirit Level) 762.6
 Quadrangle Peytona
 County Boone District Sherman
 Engineer J.B. Hunter
 Engineer's Registration No. Ohio-2912
 File No. _____ Drawing No. _____
 Date May 1, 1946 Scale 1" = 400'

STATE OF WEST VIRGINIA
 DEPARTMENT OF MINES
 OIL AND GAS DIVISION
 CHARLESTON

WELL LOCATION MAP
 FILE NO. 500-~~1255~~ 1255

+ Denotes location of well on United States Topographic Maps, scale 1 to 62,500, latitude and longitude lines being represented by border lines as shown.
 - Denotes one inch spaces on border line of original tracing.

THE PURE OIL COMPANY
WELL LOG

BOG-1255 NO PLAT

And Related Data

Union Oil of Calif.

LOG

Top	Bottom	Thickness	Formation
0	120	120	No record shown
120	123	3	Coal
123	155	32	No record shown
155	160	5	Coal
160	175	15	Shells
175	260	85	Sand
260	290	30	Shells
290	293	3	Coal
293	320	27	Lime
320	325	5	Coal
325	370	45	Sand lime
370	400	30	Shells
400	448	48	Sand
448	507	59	Shells
507	510	3	Coal
510	520	10	Slate
520	570	50	Sand
570	655	85	Shells
655	702	47	Sand
702	703	3	Coal
705	850	145	Grassus
850	928	78	Shells
928	1300	372	Salt sand
1300	1310	10	Slate
1310	1375	65	Lime
1375	1490	115	Shells
1490	1597	107	Maxon sand
1597	1680	83	Red rock & shells
1680	1690	10	Lime
1690	1750	60	Shells
1750	1820	70	Lime
1820	1825	5	Slate
1825	1847	22	Black lime
1847	2080	233	White lime
2080	2115	35	Red rock
2115	2300	185	Shells
2300	2375	75	Sand
2375	2410	35	Slate
2410	2430	20	Lime
2430	2485	55	Shells
2485	2505	20	Lime
2505	2515	10	Slate
2515	2528	13	Slate
2528	2568	40	Berea sand
2568			TOTAL DEPTH

Little oil at 2540'
Good pay at 2560' to 2568'
Gas at 1932' to 2002'
Gas at 2315'

The above well purchased from the
Laing Oil Company 6-9-27

~~Shot with 60 qts with 2 6 1/2 x 5 1/2 shells,
no anchor. No date given.~~

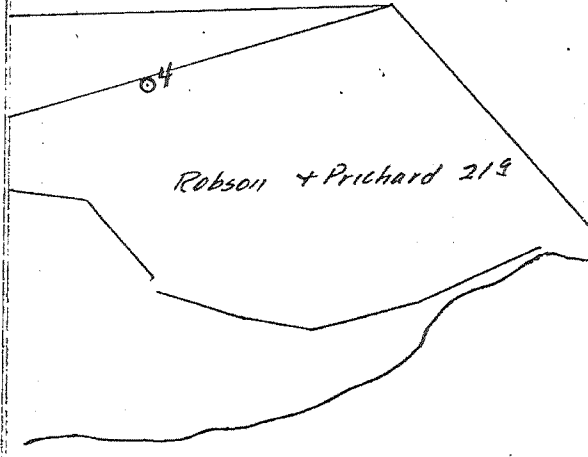
~~Second shot with 90 qts, no anchor, 10-1-25~~

Information obtained from Marietta
Torpedo Co 1-19-28:

First Shot 60 qts 4-4-1923
Top of shot 2554' Bottom of shot 2568
Second shot-90 qts. 10-1-1925
Top of shot 2542 Bottom of shot 2560

Lease R & P 21-acre tract Well No. 4
Lease No. 43222 Acres 21 A. P. E. No. 374
Elevation 854.9 Producing Division Charleston
Lot
Sec/Twp/Rge.
Dist. Sherman Survey
County Boone State West Va.

LOCATION



CASING RECORD

Size	Weight	Thread	Make	Set At	Remarks
10"				330'	
8 1/2"				1525'	20 jts pulled
6 5/8"				1857'	
2" Down				2568'	4 1/2 jts

CASING CEMENTING RECORD

Size	Set At	Sacks Used	Gallons Setfast	Results

LINER RECORD

Size	Weight	Length	No. Joints Blank	No. Joints Perforated	Set At

BRADENHEAD RECORD

Make	Size	Type	Remarks

INITIAL TORPEDO RECORD

Date	Top of Shot	Bottom of Shot	No. Qts.	Remarks
Drilling Commenced			January 9th	19 23
Drilling Completed			March 29th	19 23
Drilled With				Tools
Drilled in With				Tools
First 24 Hrs. Production—Natural			NO RECORD	Bbls.
First 24 Hrs. Production—After Shot			NO RECORD	Bbls.
Gravity				Grade
Gas-Rock Press			Lbs., Volume	Cu. Ft.
Date Abandoned				19

ANALYSIS OF DATA

Date Started 1/18/39 Date Shot
 Date Completed 2/19/39 From To
 Total Depth at Start 2564' Qts Anchor
 " " Compl 2566' Ft. Sd. or Ft. Temp.
 Drilled Deeper Prod. before shot
 Drilled Back Prod. after shot
 Stop or Liner Change
 Cacker-Type
 Cacker-set at
 Prod. before C.O. 2.0 oil .46 water Prod. after C.O. 2.4 bbl oil
 Flow " " Openflow 1st 96 hrs 2.2 bbls
 Daily " " Gas Use 6th 24 " 2.2 " "
 Use Fr. " " Line Fr. 8th 24 " 2.7 " "
 Remarks CLEARED out caving 11th 24 " 2.7 " "
 late and sand and put to 13th 24 " 2.2 " "
 pg. 2/10/39. Note: Well was 15th 24 " 2.2 " "
 pumping 3/4 hr Mon. & Fri. since July, 1935.
 now pumping 3/4 hr Tu.-Th.- & Sat.

200-1255

C

D

D

D

WELL LOG

BOO-1255 NO PLAT

And Related Data

Union Oil of Calif.

LOG

Top	Bottom	Thickness	Formation
0	120	120	No record shown
120	123	3	Coal
123	155	32	No record shown
155	160	5	Coal
160	175	15	Shells
175	260	85	Sand
260	290	30	Shells
290	293	3	Coal
293	320	27	Lime
320	325	5	Coal
325	370	45	Sand lime
370	400	30	Shells
400	448	48	Sand
448	507	59	Shells
507	510	3	Coal
510	520	10	Slate
520	570	50	Sand
570	655	85	Shells
655	702	47	Sand
702	705	3	Coal
705	850	145	Grampus
850	928	78	Shells
928	1300	372	Salt sand
1300	1310	10	Slate
1310	1375	65	Lime
1375	1490	115	Shells
1490	1597	107	Maxon sand
1597	1680	83	Red rock & shells
1680	1690	10	Lime
1690	1750	60	Shells
1750	1820	70	Lime
1820	1825	5	Slate
1825	1847	22	Black lime
1847	2080	233	White lime
2080	2115	35	Red rock
2115	2300	185	Shells
2300	2375	75	Sand
2375	2410	35	Slate
2410	2430	20	Lime
2430	2485	55	Shells
2485	2505	20	Lime
2505	2515	10	Slate
2515	2528	13	Shale
2528 ✓	2568 ✓	40	Berea sand
2568			TOTAL DEPTH

Little oil at 2540' ✓
Good pay at 2560' to 2568' ✓
Gas at 1932' to 2002'
Gas at 2315'

The above well purchased from the
Laing Oil Company 6-9-27

~~Shot with 60 qts with 2 6 1/2" x 5 1/2" shells,
no anchor. No date given.~~

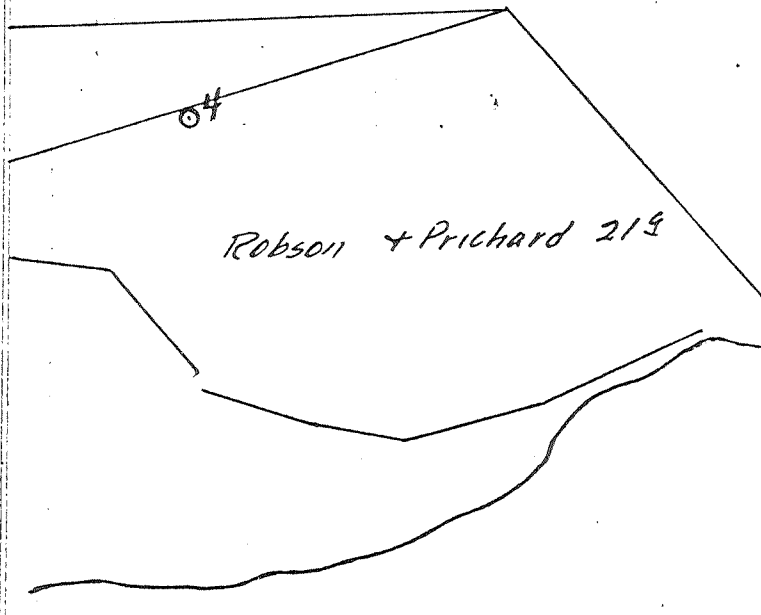
~~Second shot with 90 qts, no anchor, 10-1-25~~

Information obtained from Marietta
Torpedo Co 1-19-28:

First Shot 60 qts 4-4-1923
Top of shot 2554' Bottom of shot 2568
Second shot-90 qts. 10-1-1925
Top of shot 2542 Bottom of shot 2560

Lease	R & P 21 acres tract	Well No.	4
Lease No.	43222	Acres	21
Elevation	854.9	Producing Division	Charleston
Lot			
Sec.		Twp.	
Brct.	Sherman	Rge.	
Dist.		Survey	
County	Boone	State	West Va.

LOCATION



CASING RECORD

Size	Weight	Thread	Make	Set At	Remarks
10"				330'	
8 1/2"				1325'	20 jts pulled
6 5/8"				1857'	
2"	Common			2556'	7429

CASING CEMENTING RECORD

Size	Set At	Sacks Used	Gallons Setfast	Results

LINER RECORD

Size	Weight	Length	No. Joints Blank	No. Joints Perforated	Set At

BRADENHEAD RECORD

Make	Size	Type	Remarks

INITIAL TORPEDO RECORD

Date	Top of Shot	Bottom of Shot	No. Qts.	Remarks
Drilling Commenced			January 8th	19 23
Drilling Completed			March 29th	19 23
Drilled With				Tools
Drilled in With				Tools
First 24 Hrs. Production—Natural			NO RECORD	Bbbs.
First 24 Hrs. Production—After Shot			NO RECORD	Bbbs.
Gravity				, Temp. , Grade
Gas-Rock Press				Lbs., Volume. Cu. Ft.
Date Abandoned				, 19

CLEANING OUT AND RECONDITIONING DATA

Date Started 1/18/39 Date Shot _____
 Date Completed 2/10/39 From _____ To _____
 Total Depth at Start 2564' Qts. _____ Anchor _____
 " " " Compl. 2568' Ft. Sd. or Fl. Tamp. _____
 Drilled Deeper _____ Prod. before shot _____
 Rugged Back _____ Prod. after shot _____
 Casing or Liner Changes _____

 Cacker-Type _____
 Cacker-set at _____
 Prod. before C.O. 2.0 oil .46 water Prod. after C.O. 2.4 bbl oil
 Openflow 1st 96 hrs 2.2 bbls
 Gas Dely. " " Gas Dely. 6th 24 " 2.2 "
 Line Fr. 8th 24 " 2.7 "
 Remarks Cleaned out caving 11th 24 " 2.7 "
late and sand and put to 13th 24 " 2.2 "
pg. 2/10/39. Note: Well was 15th 24 " 2.2 "
umping 3/4 hr Mon. & Fri. since July, 1935.
ow pumping 3/4 hr Tu.-Th.- & Sat.

B00-1255