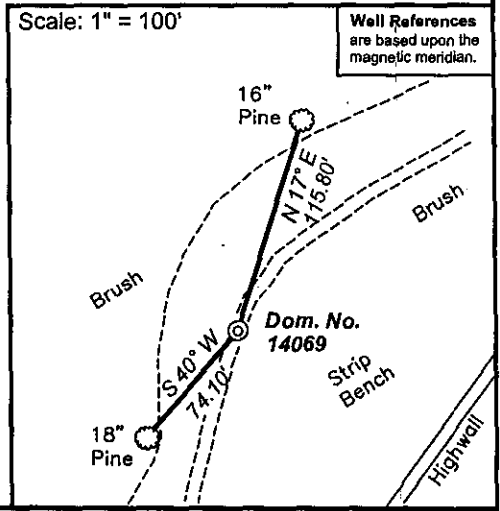


**Notes:**  
 Well site coordinates are  
 N: 312,066 Lat: 37-51-18.9  
 E: 1,813,959 Long: 81-38-39.7

West Virginia Coordinate System of 1927 (South Zone) based upon Differential GPS Measurements.  
 Plat orientation, corner and well ties are based upon the grid north meridian.  
 Well location references are based upon the magnetic meridian.

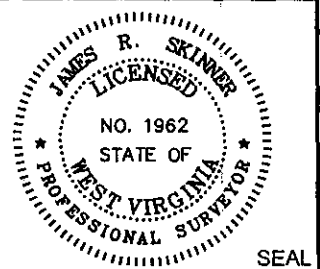


(-o-) Denotes Location of Well on United States Topographic Maps



I, the undersigned, hereby certify that this plat is correct to the best of my knowledge and belief and shows all the information required by law and the regulations issued and prescribed by the Department of Mines.

*James R. Skinner*  
 P.S. 1962



FILE NO: W-140-16-CR-04 (D6-26)  
 DRAWING NO: W14016cr04\_14069.dwg  
 SCALE: 1" = 1000'  
 MINIMUM DEGREE OF ACCURACY: 1:200  
 PROVEN SOURCE OF ELEVATION: Bench Mark Elevation 1106'



STATE OF WEST VIRGINIA  
 DEPARTMENT OF MINES  
 OIL AND GAS DIVISION

DATE: October 20, 20 04  
 OPERATOR'S WELL NO. 14069  
 API WELL NO  
 47 - 005 - 01962  
 STATE COUNTY PERMIT

WELL TYPE:  OIL  GAS  LIQUID INJECTION  WASTE DISPOSAL  
 (IF GAS) PRODUCTION:  STORAGE  DEEP  SHALLOW  
 LOCATION: ELEVATION: 1797' WATERSHED Jasper Workman Branch QUADRANGLE: Lorado 7.5'  
 DISTRICT: Crook COUNTY: Boone  
 SURFACE OWNER: Bank One Trustee for David D. Shepard Trust ACREAGE: 18,779.52  
 OIL AND GAS ROYALTY OWNER: Bank One Trustee for David D. Shepard Trust LEASE NO: 80210 ACREAGE: 23,649.70  
 PROPOSED WORK:  DRILL  CONVERT  DRILL DEEPER  FRACTURE OR STIMULATE  PLUG OFF OLD FORMATION  
 PERFORATE NEW FORMATION  OTHER PHYSICAL CHANGE IN WELL (SPECIFY)  
 PLUG AND ABANDON  CLEAN OUT AND REPLUG TARGET FORMATION: Devonian Shale ESTIMATED DEPTH: 5075'

WELL OPERATOR: Dominion Exploration & Production, Inc. DESIGNATED AGENT: Rodney Biggs  
 ADDRESS: One Dominion Drive, P.O. Box 1248 Jane Lew, WV 26378 ADDRESS: One Dominion Drive, P.O. Box 1248 Jane Lew, WV 26378

6-6 (266)

DEC 10 2004

800 1962

State of West Virginia  
Department of Environmental Protection  
Office of Oil and Gas

*APB*

Well Operator's Report of Well Work

Farm name: Bank One Trustee Operator Well No.: 14069

LOCATION: Elevation: 1797' Quadrangle: Lorado 7.5'

District: Crook County: Boone  
Latitude 7.190 Feet South of 37 Deg. 52 Min. 30 Sec.  
Longitude 5600 Feet West of 81 Deg. 37 Min. 30 Sec.

Company: Dominion Exploration & Production, Inc

	Casing & Tubing	Used in drilling	Left in well	Cement fill up Cu. Ft.
Address: P O Box 1248 Jane Lew, WV 26378				
Agent: Rodney J. Biggs				
Inspector: Carlos Hively				
Date Permit Issued: 12/10/2004				
Date Well Work Commenced: 01/15/2005	12 3/4"	22'	22'	Sand In
Date Well Work Completed: 01/25/2005				
Verbal Plugging N/A	9 5/8"	309'	309'	145 sks
Date Permission granted on: N/A				
Rotary X Cable Rig	7"	2155'	2155'	320 sks
Total Depth (feet): 5045'				
Fresh Water Depth (ft.): N/A	4 1/2"	5000'	5000'	150 sks
Salt Water Depth (ft.): N/A				
Is coal being mined in area (N/Y)? N				
Coal Depths (ft.): 290-291', 440-441', 730-731'				

OPEN FLOW DATA

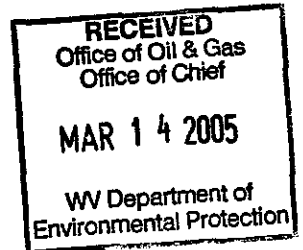
Producing formation Lower Upper Huron Pay zone depth (ft) 4754-4800'  
Berea Pay zone depth (ft) 3613-3621'  
Gas: Initial open flow Trace MCF/d Oil: Initial open flow 0 Bbl/d  
Final open flow 4.4MMCF/d Final open flow 0 Bbl/d  
Time of open flow between initial and final tests 12 Hours  
Static rock Pressure 840 psig (surface pressure) after 12 Hours  
Second producing formation Lower Big Lime Pay zone depth (ft) 3024-3058'  
Upper Big Lime Pay zone depth (ft) 2865-2902'  
Gas: Initial open flow \* MCF/d Oil: Initial open flow \* Bbl/d  
Final open flow \* MCF/d Final open flow \* Bbl/d  
Time of open flow between initial and final tests \* Hours

\*Commingled with previous formations

NOTE: ON BACK OF THIS FORM PUT THE FOLLOWING: 1). DETAILS OF PERFORATED INTERVALS, FRACTURING OR STIMULATING, PHYSICAL CHANGE, ETC. 2). THE WELL LOG WHICH IS A SYSTEMATIC DETAILED GEOLOGICAL RECORD OF ALL FORMATIONS, INCLUDING COAL ENCOUNTERED BY THE WELLBORE.

Signed: *Rodney J. Biggs*  
By: Rodney J. Biggs  
Date: 3/9/05

MAY 27 2005



800 1962

