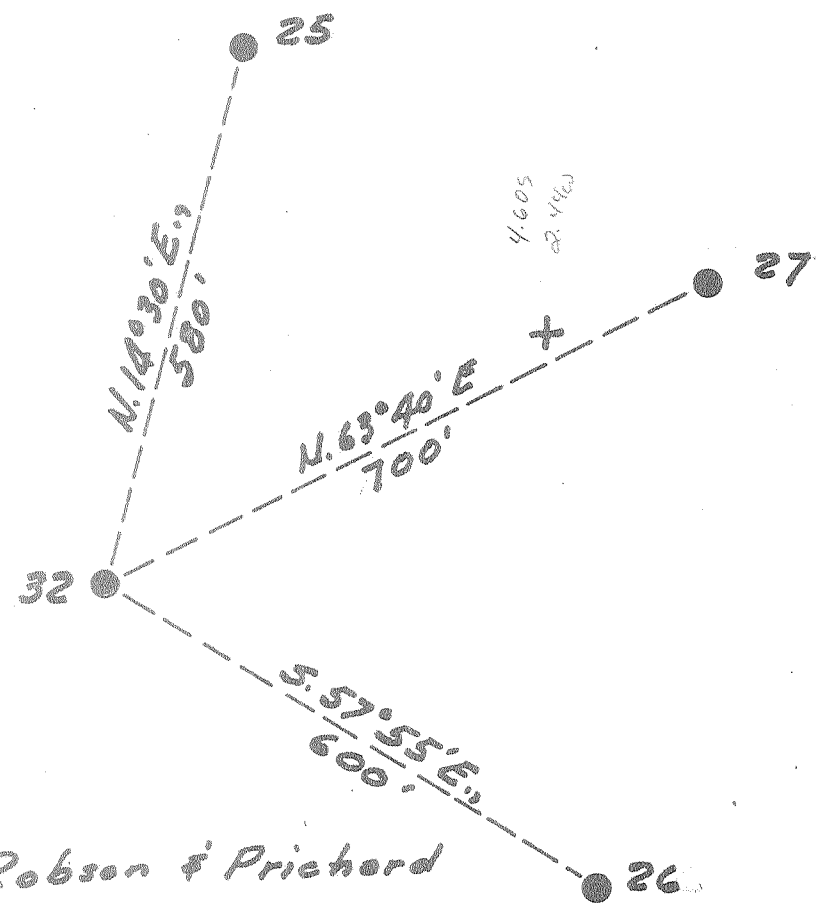


Latitude 38° 10'

Longitude 81° 30'

1
2
3



La Follette, Robson & Prichard
Tract "A"
1951²⁵

New Location...
 Drill Deeper.....
 Abandonment.....

Company Pure Oil Co.
 Address Newark, Ohio
 Farm L. R. & P.
 Tract "A" Acres 1951 Lease No. 227
 Well (Farm) No. 32 Serial No. 459
 Elevation (Spirit Level) 1483.6
 Quadrangle Peytona
 County Boone District Sherman
 Engineer J. B. Hunter
 Engineer's Registration No. Ohio-2912
 File No. _____ Drawing No. _____
 Date 9-20-55 Scale 1" = 200'

STATE OF WEST VIRGINIA
 DEPARTMENT OF MINES
 OIL AND GAS DIVISION
 CHARLESTON

WELL LOCATION MAP

FILE NO. B00-257-A
now 5-2191

+ Denotes location of well on United States Topographic Maps, scale 1 to 62,500, latitude and longitude lines being represented by border lines as shown.
 - Denotes one inch spaces on border line of original tracing.



STATE OF WEST VIRGINIA
DEPARTMENT OF MINES
OIL AND GAS DIVISION

685 ✓

Quadrangle Keystone
Permit No. 757-A

WELL RECORD

Oil or Gas Well Water Inj.
(KIND)

Company The Pure Oil Company
Address Box 551, Newark, Ohio
Farm LaFollette, Robson & Prichard Tract, "A" Acres 1,951
Location (waters) _____
Well No. 32 Elev. 1483.6
District Sherman County Boone
The surface of tract is owned in fee by LaFollette, Robson, Prichard, et. al. Address _____
Mineral rights are owned by Same Address _____
Drilling commenced 4-12-28
Drilling completed 6-21-28
Date Shot 6-22-28 From 3163 To 3188
With 80 cts.

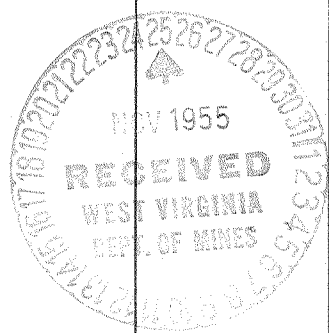
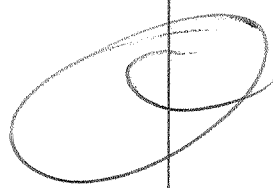
Casing and Tubing	Used in Drilling	Left in Well	Packers
Size			Kind of Packer
16			
13			
10	997'	997'	Size of
8 1/4	1843'	1843'	
6 5/8	2471'	2471'	Depth set
5 3/16			
3			Perf. top
2	Cemented with 40 sks 3153' cement.		Perf. bottom
Liners Used			Perf. top
			Perf. bottom

Open Flow _____ /10ths Water in _____ Inch
_____ /10ths Merc. in _____ Inch
Volume _____ Cu. Ft.
Rock Pressure _____ lbs. _____ hrs.
Oil 11 bbls., 1st 24 hrs.
Fresh water _____ feet _____ feet
Salt water _____ feet _____ feet

CASING CEMENTED _____ SIZE _____ No. Ft. _____ Date _____

COAL WAS ENCOUNTERED AT 101 FEET 81 INCHES
218 FEET 68 INCHES 350 FEET 36 INCHES
290 FEET 60 INCHES 390 FEET 36 INCHES
450 FEET 60 INCHES 969 FEET 60 INCHES
817 FEET 36 INCHES 993 FEET 48 INCHES

Formation	Color	Hard or Soft	Top	Bottom	Oil, Gas or Water	Depth Found	Remarks
Soil, soft			0	10			
Sand, hard			10	60			
Slate, soft			60	101			
Coal, soft			101	108			
Slate, soft			108	151			
Lime, hard			151	190			
Slate, soft			190	218			
Coal, soft			218	224			
Slate, soft			224	244			
Coal, soft			244	249			
Slate, soft			249	255			
Lime, hard			255	290			
Coal, soft			290	294			
Slate, soft			294	310			
Sand, hard			310	350			
Coal, soft			350	353			
Slate, soft			353	355			
Lime, hard			355	390			
Coal, soft			390	393			
Lime, hard			393	450			
Coal, soft			450	455			
Slate & shells			455	542			
Lime, hard			542	620			
Slate, soft			620	635			
Lime, hard			635	680			
Slate, soft			680	685			
Lime, hard			685	766			
Slate, soft			766	770			
Lime, hard			770	775			
Slate, soft			775	817			
Coal, soft			817	820			
Lime, hard			820	829			
Slate, soft			829	831			
Sand, hard			831	942			
Slate, soft			942	945			
Lime, hard			945	969			
Coal, soft			969	974			
Slate, soft			974	981			
Lime, hard			981	987			



MAR 28 1937

Formation	Color	Hard or Soft	Top	Bottom	Oil, Gas or Water	Depth Found	Remarks
Slate, soft			987	993			
Coal, soft			993	997			
Lime, hard			997	1006			
Slate, soft			1006	1010			
Sand, hard			1010	1050			
Slate & shells			1050	1170			
Sand, hard			1170	1220			
Slate & shells			1220	1270			
Sand, hard			1270	1320			
Slate & shells			1320	1360			
Grampus, hard			1360	1530			
Slate & shells			1530	1579			
Salt sand, hard			1579	1840			
Slate, soft			1840	1843			
Lime, hard			1843	1940			
Sand, hard			1940	1980			
Slate and shells			1980	2090			
Maxon sand, hard			2090	2225			
Slate & shells			2225	2230			
Red rock, soft			2230	2250			
Slate & shells			2250	2290			
Red rock, soft			2290	2305			
Slate & shells			2305	2385			
Little lime, hard			2385	2432			
Slate, soft			2432	2442			
Lime shell, hard			2442	2450			
Slate, soft			2450	2456			
Big lime, hard			2456	2703			
Big injun, hard			2703	2733			
Slate & shells			2733	2897			
Weir sand, hard			2897	2988	Gas	2905'-2910'	
Slate & shells			2988	3138			
Brown shale			3138	3145			
Berea Grit			3145	3188	Oil & Gas	3164-3188'	<i>check log</i>
Slate			3188	3190			
TOTAL DEPTH				3190			

Date September 2, 1955

APPROVED THE PURE OIL COMPANY, Owner

By Guy J. Andersen
(Title)

Division Superintendent