

WW-7
8-30-06



West Virginia Department of Environmental Protection
Office of Oil and Gas
WELL LOCATION FORM: GPS

API: 47-005-30316 WELL NO.: 9
FARM NAME: LaFollette
RESPONSIBLE PARTY NAME: Gary E. Acord
COUNTY: Boone DISTRICT: Sherman
QUADRANGLE: Sylvester
SURFACE OWNER: LaFollette
ROYALTY OWNER: LaFollette
UTM GPS NORTHING: 4216635.44 meters (NAD-83 Zone 17N)
UTM GPS EASTING: 451525.08 meters (NAD-83 Zone 17N)
GPS ELEVATION: 371.2 m. (1218')

The Responsible Party named above has chosen to submit GPS coordinates in lieu of preparing a new well location plat for a plugging permit or assigned API number on the above well. The Office of Oil and Gas will not accept GPS coordinates that do not meet the following requirements:

1. Datum: NAD 1983, Zone: 17 North, Coordinate Units: meters, Altitude: height above mean sea level (MSL) – meters.
2. Accuracy to Datum – 3.05 meters
3. Data Collection Method:
Survey grade GPS : Post Processed Differential
Real-Time Differential
Mapping Grade GPS : Post Processed Differential
Real-Time Differential

RECEIVED
Office of Oil and Gas

MAR 11 2019

WV Department of
Environmental Protection

4. Letter size copy of the topography map showing the well location.

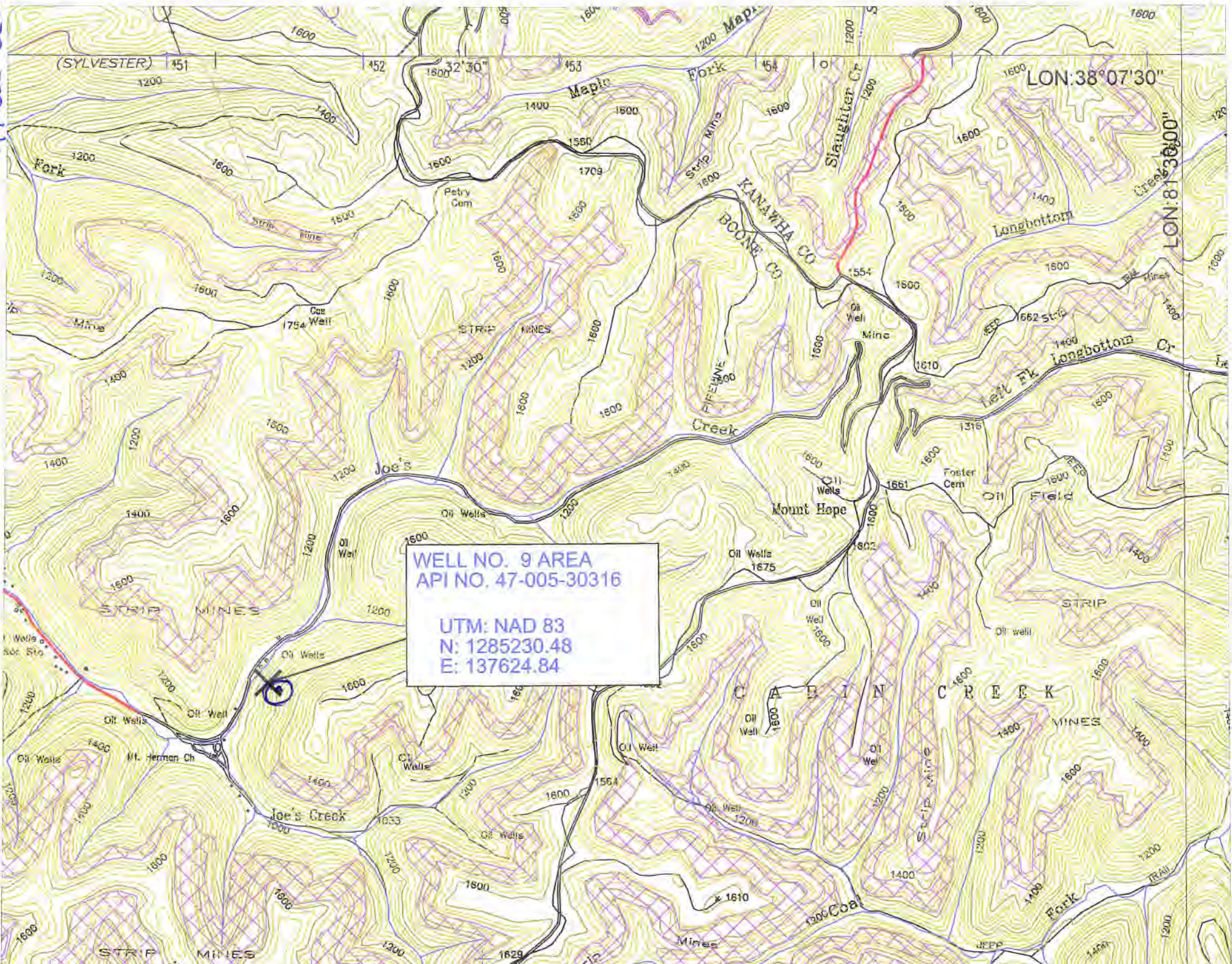
I the undersigned, hereby certify this data is correct to the best of my knowledge and belief and shows all the information required by law and the regulations issued and prescribed by the Office of Oil and Gas.

Gary E. Acord
Signature

AGENT/ENGINEER
Title

3-11-19
Date

47-005-02368P



(SYLVESTER) 151

LON: 38° 07' 30"

LON: 81° 30' 00"

WELL NO. 9 AREA
API NO. 47-005-30316
UTM: NAD 83
N: 1285230.48
E: 137624.84

1200 Maple Fork

KANAWHA CO
BOONE CO

Longbottom

Longbottom Cr

Joe's

FIFELINE Creek

Mount Hope

Field

C A B I N C R E E K

Joe's Creek

1200 Coal

STRIP MINES

Fork

1400



PANTHER CREEK MINING, LLC
 AMERICAN EAGLE MINE

Well No. 9
 API No. 47-005-30316
 Scale: 1" = 2000'

RECEIVED
 Office of Oil and Gas
 MAR 5 2019
 WV Department of Environmental Protection

SYLVESTER QUADRANGLE
 WEST VIRGINIA - BOONE CO.
 7.5 MINUTE SERIES (TOPOGRAPHIC)