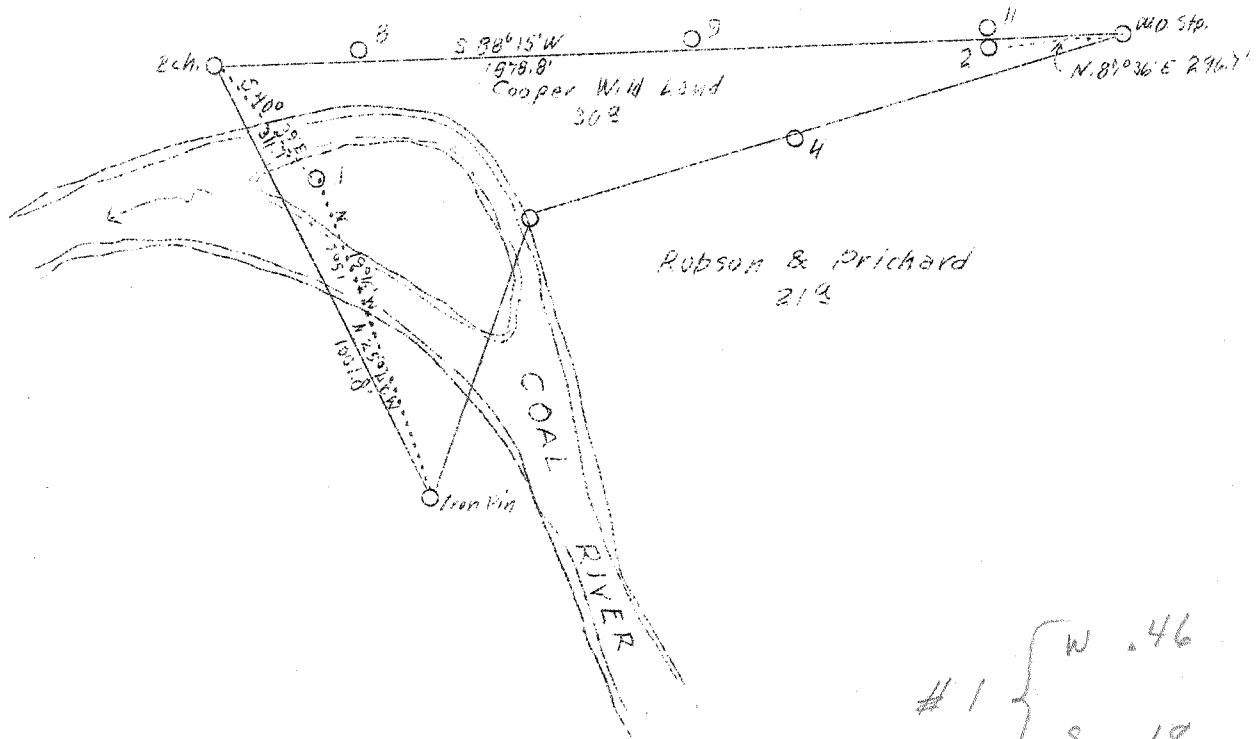


LATITUDE 38° 05'

+

LONGITUDE 81° 55'

Lafollette Robson & Prichard et al
B TRACT
5000 ±



#1 { W .46
 S .18
#2 { W .36
 S .05

Company	Pure Oil Company
Address	Newark, Ohio
Farm	Cooper Wild Land
Acres	30
Lease No.	271
Well (Farm) No.	#1 and 2
Elevation (SP)	#1 710.5 - #2 1066.82
Quadrangle	Peytona
County	Boone
District	Sherman
Engineer	John C. Owens
Eng. Reg. No.	Ohio 5270
Date	April 11, 1938
Scale	1" = 400'

STATE OF WEST VIRGINIA
Department of Mines
OIL & GAS DIVISION
Charleston

WELL LOCATION MAP
File No. B00-63-A

x Denotes location of well on U. S. Topographic Maps, scale 1 to 62,500, latitude and longitude lines being represented by border lines as shown.

- Denotes one inch spaces on border line of original tracing.

WEST VIRGINIA DEPARTMENT OF MINES
OIL AND GAS DIVISION

410

WELL RECORD

Permit No. 63-A

Oil or Gas Well Oil
(Kind)

Company The Pure Oil Company
Address Box 581 - Newark, Ohio
Farm Cooper-Hildland Acres 30
Location (waters) Coal Fork
Well No. 1 Elev. 710.5
District Bohman County Boone
The surface of tract is owned in fee by.....
Address.....
Mineral rights are owned by.....
Address.....
Drilling commenced 1-10-23
Drilling completed 2-7-23
Date shot 5-9-23 Depth of shot 2394-2395
Open Flow /10ths Water in..... Inch
/10ths Merc. in..... Inch
Volume No record Cu. Ft.
Rock Pressure..... lbs..... hrs.
Oil No record bbls., 1st 24 hrs.
Fresh water..... feet..... feet
Salt water..... feet..... feet

Casing and Tubing	Used in Drilling	Left in Well	Packers
Size			
16.			Kind of Packer.....
13.	<u>20</u>	<u>20</u>	
10.	<u>255</u>	<u>255</u>	Size of.....
8 1/4.	<u>1224</u>	<u>1224</u>	
6 5/8.	<u>1708</u>	<u>1708</u>	Depth set.....
5 3/16.			
3.			Perf. top.....
2.			Perf. bottom.....
Liners Used			Perf. top.....
			Perf. bottom.....

CASING CEMENTED..... SIZE..... No. FT..... Date.....
COAL WAS ENCOUNTERED AT 52 FEET 60 INCHES
458 FEET 36 INCHES..... FEET..... INCHES
..... FEET..... INCHES..... FEET..... INCHES

Formation	Color	Hard or Soft	Top	Bottom	Oil Gas or Water	Depth Found	Remarks
Gravel			0	20			
Sand			20	47			
Slate			47	82			
Coal			82	87			
Lime			87	112			
Slate			112	172			
Sand			172	222			
Slate			222	247			
Sand			247	282			
Slate			282	342			
Lime			342	372			
Slate			372	412			
Sand			412	422			
Slate			422	438			
Coal			438	441			
Sand			441	552			
Slate			552	570			
<u>GRANITE</u>			570	660			
Lime Shells			660	775			
<u>SALT SAND</u>			775	1150			
Lime			1150	1222			
Black lime			1222	1330			
<u>MASS SAND</u>			1330	1440			
Lime			1440	1450			
Red rock			1450	1485			
Gray shells			1485	1500			
Red rock			1500	1510			
shells			1510	1525			
Lime			1525	1625			
Slate			1625	1630			
Little Lime			1630	1645			
Slate & Shells			1645	1685			
Dark Lime			1685	1698			
<u>BIG LIME</u>			1698	1910			
<u>TRIPOLI</u>			1910	1950			
Shells			1950	2115			
<u>HEAVY SAND</u>			2115	2219			
Shells			2219	2345			
Brown shale			2345	2560			
<u>HEAVY SAND</u>			2560	2595			
Lime			2595	2595			
Total depth			2595				

