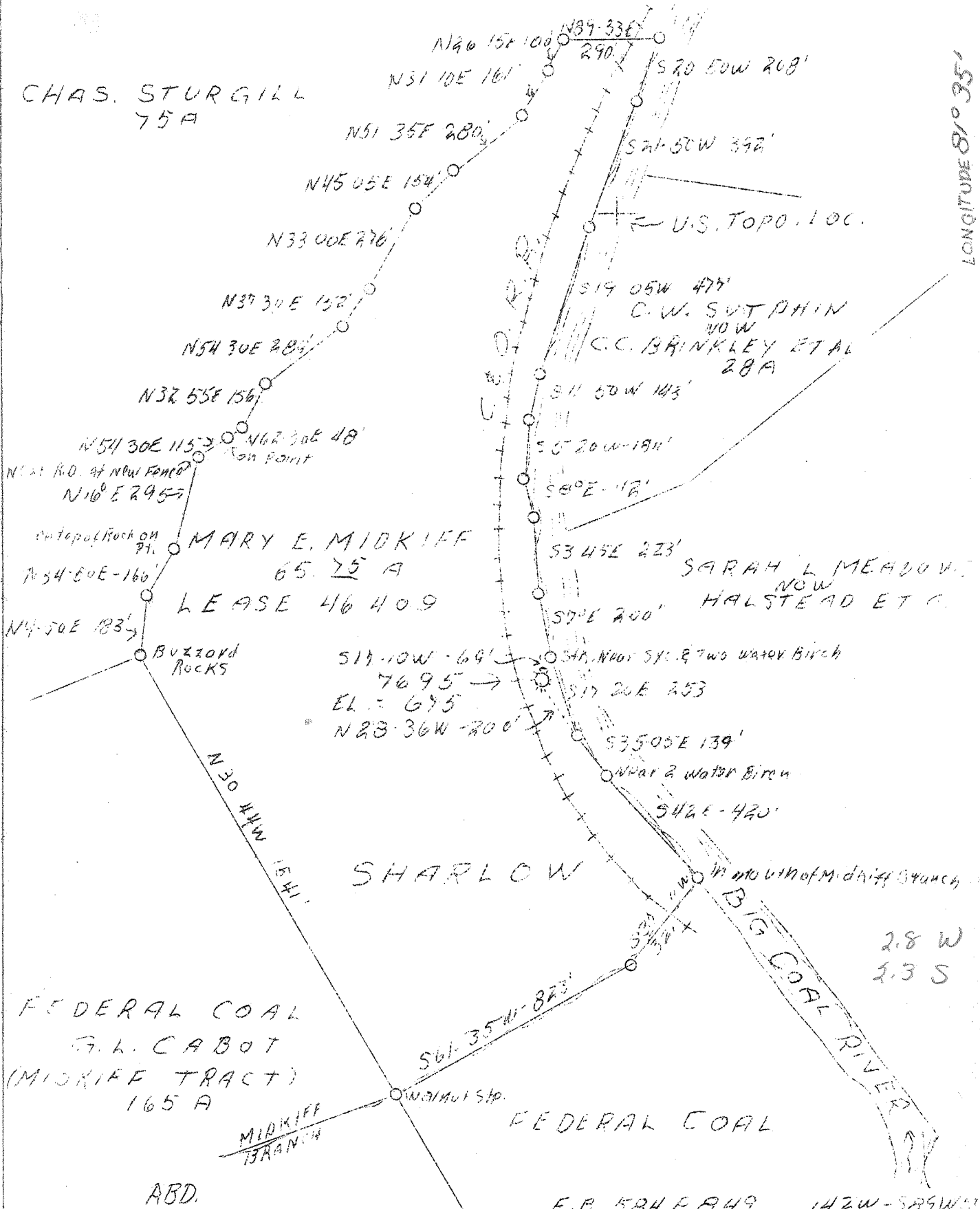


LATITUDE 38° 10'

LONGITUDE 81° 35'



Company	Hope Nat. Gas Co.
Address	Clarksburg, W.Va.
Farm	Mary E. Midkiff
Tract	1
Acres	65.75
Lease No.	46409
Well (Farm) No.	1
Serial No.	7695
Elev. (Spirit) Level	675
Quadrangle	Peytona SC
County	Boone
District	Sherman
Eng.	W.M. Bowers
Eng. Reg. No.	900
Date	Oct. 18, 1938
Scale	1" = 400'

STATE OF WEST VIRGINIA
 Department of Mines
 OIL AND GAS DIVISION
 Charleston

WELL LOCATION MAP

File No. B00-64-A

x Denotes location of well on U.S. Topographic Maps, scale 1 to 62,500, latitude and longitude lines being represented by border lines as shown.

- Denotes one inch spaces on border line of original tracing.