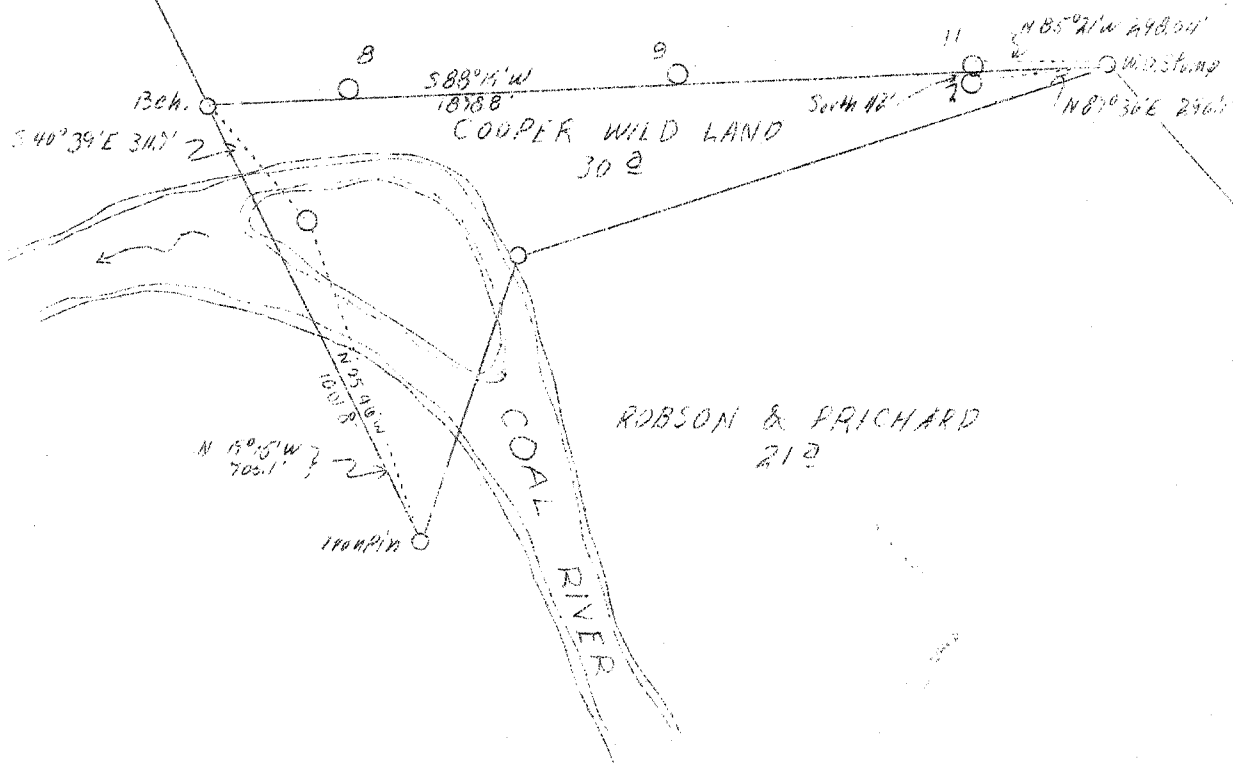


LATITUDE 38° 05'

0095  
0.35 W

LONGITUDE 82° 20'

LAFOLLETTE, ROBSON, PRICHARD ET AL.  
B TRACT  
5000 @  
LEASE No. 224-226



NOTE  
Cooper Wild Land Wells No. 1 & 2  
have been ~~ABD.~~

ABD.

Company	The Pure Oil Co.
Address	Newark, Ohio
Farm	LaFollette, Robson, Prichard, et al
Tract	B
Acres	5000
Lease No.	224-226
Well (Farm) No.	11
Elevation (SP)	1079
Quadrangle	Peytona <i>SC</i>
County	Boone
District	Sherman
Engineer	John C. Owens
Eng. Reg. No.	Ohio 5270
Date	Oct. 24, 1938
Scale	1" - 400'

STATE OF WEST VIRGINIA  
Department of Mines  
OIL & GAS DIVISION  
Charleston

WELL LOCATION MAP

File No. Boo-66-A

x Denotes location of well on U. S. Topographic Maps, scale 1 to 62,500, latitude and longitude lines being represented by border lines as shown.

- Denotes one inch spaces on border line of original tracing.

STATE OF WEST VIRGINIA  
DEPARTMENT OF MINES  
OIL AND GAS DIVISION

412

WELL RECORD

Permit No. 66-A

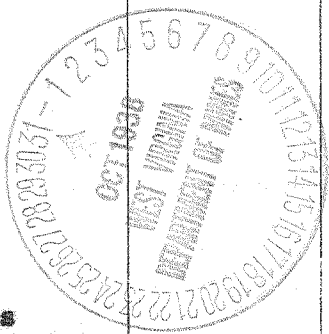
Oil or Gas Well **OIL**  
(Kind)

Company The Pure Oil Company  
 Address Box 551 - Newark, Ohio  
 Farm L. R. & P. "B" Acres 5,000  
 Location (waters) Coal River  
 Well No. 11 Elev. 1079.0  
 District Sherman County Boone  
 The surface of tract is owned in fee by LaFollette, Robson & Pritchard, et al Address Charleston, W. Va.  
 Mineral rights are owned by LaFollette, Robson & Pritchard, et al Address Charleston, W. Va.  
 Drilling commenced November 15, 1923  
 Drilling completed February 10, 1924  
 Date shot February 12, 1924 Depth of shot 2769-2787  
 Open Flow /10ths Water in \_\_\_\_\_ Inch  
 /10ths Merc. in \_\_\_\_\_ Inch  
 Volume No record Cu. Ft.  
 Rock Pressure \_\_\_\_\_ lbs. \_\_\_\_\_ hrs.  
 Oil 10.0 bbls., 1st 24 hrs.  
 Fresh water No record feet \_\_\_\_\_ feet  
 Salt water No record feet \_\_\_\_\_ feet

Casing and Tubing	Used in Drilling	Left in Well	Packers
Size			
16			Kind of Packer
13			
10	650.	650	Size of
8 1/4	1550	1550	
6 5/8	2099	2099	Depth set
5 3/16			
3			Perf. top
2			Perf. bottom
Liners Used			Perf. top
			Perf. bottom

CASING CEMENTED \_\_\_\_\_ SIZE \_\_\_\_\_ No. FT. \_\_\_\_\_ Date \_\_\_\_\_  
 COAL WAS ENCOUNTERED AT 40 FEET 36 INCHES  
200 FEET 72 INCHES 325 FEET 36 INCHES  
400 FEET 60 INCHES 540 FEET 72 INCHES

Formation	Color	Hard or Soft	Top	Bottom	Oil Gas or Water	Depth Found	Remarks
Surface			0	25			
Slate			25	40			
Coal			40	43			
Sand			43	200			
Coal			200	206			
Slate			206	230			
Sand			230	325			
Coal			325	328			
Sand			328	380			
Slate			380	400			
Coal			400	405			
Sand			405	500			
Slate & Shells			500	515			
Sand			515	540			
Coal			540	546			
Sand			546	550			
Line Shells			550	665			
Slate			665	740			
Sand			740	780			
Slate			780	930			
GRAMFUS			930	1080			
Slate			1080	1150			
SALT SAND			1150	1495			
Slate			1495	1498			
Sand			1498	1540			
Line			1540	1560			
Sand			1560	1615			
Line Shells			1615	1730			
MAXON			1730	1815			
Red Rock			1815	1850			
Line Shells			1850	1880			
Red Rock			1880	1900			
Line Shells			1900	1995			
Little Line			1995	2030			
Pencil Cave			2030	2035			
(No record)			2035	2069			
BIG LINE			2069	2300			
BIG INJUN			2300	2330			
Slate & Shells			2330	2550			
WEIR			2550	2600			
Slate & Shells			2600	2750			



Formation	Color	Hard or Soft	Top	Bottom	Oil, Gas or Water	Depth Found	Remarks
<u>Berea</u> Slate			2750 2787	2787 2788	Gas  Oil	2775-2787  2760, 2775-2787	No record of volume
			Total Depth	2788			

Date..... October 29,....., 1938

APPROVED THE PURE OIL COMPANY....., Owner  
Box 561 - Newark, Ohio

By.....  
Division Superintendent