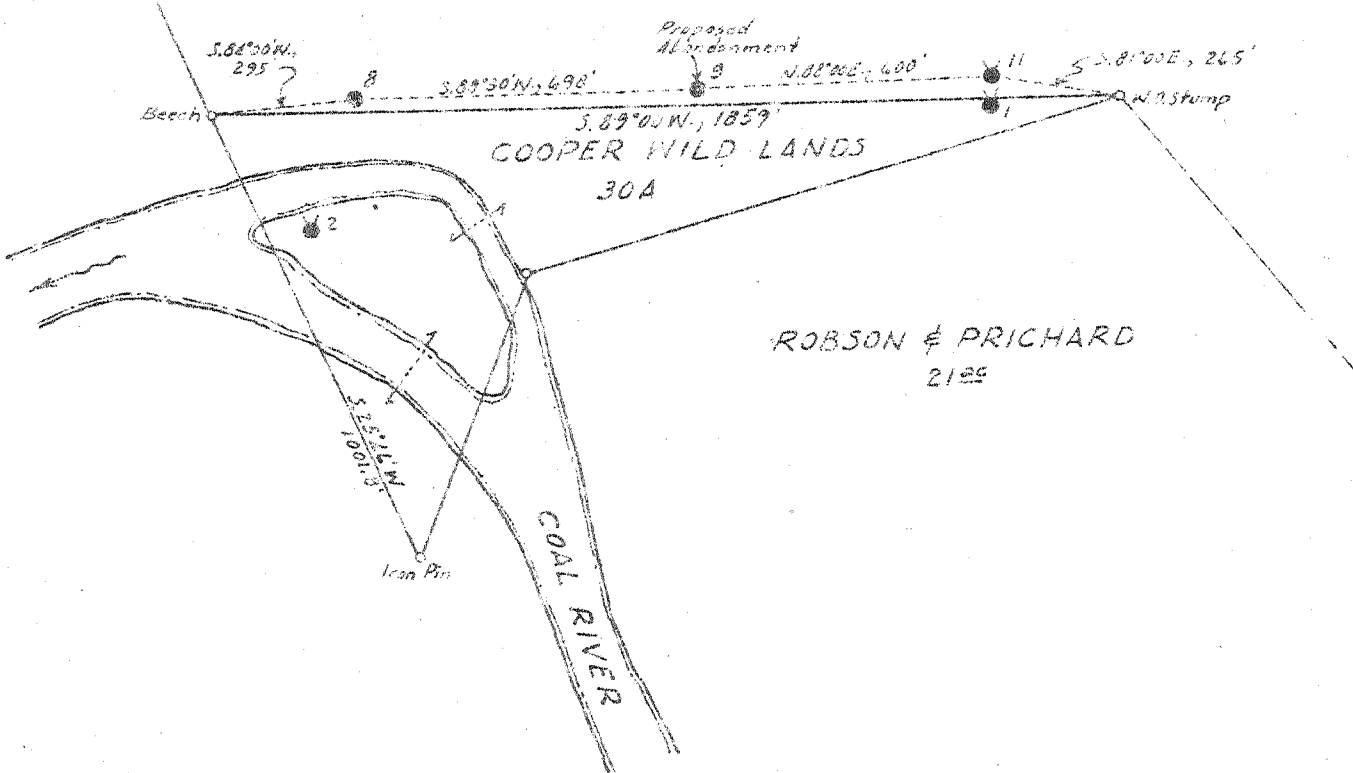


L. R. & P. "B" TRACT
5000[±]
LEASE NO. 224-226

Latitude 38 05



New Location
Drill Deeper
Abandonment

Company THE PURE OIL COMPANY
 Address NEWARK, OHIO
 Firm LaFollette, Robson & Prichard
 Tract "B" Acres 5000 Lease No. 224-226
 Well (Farm) No. 9 Serial No. 196
 Elevation (Spirit Level) 870
 Quadrangle Peytona
 County Boone District Sherman
 Engineer J. B. Hunter
 Engineer's Registration No. Ohio - 2912
 File No. _____ Drawing No. _____
 Date April 23, 1945 Scale 1" = 400'

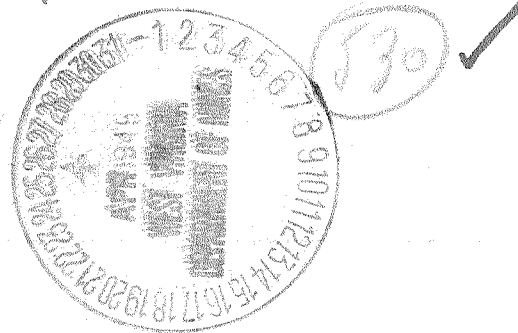
STATE OF WEST VIRGINIA
DEPARTMENT OF MINES
OIL AND GAS DIVISION
CHARLESTON

WELL LOCATION MAP
FILE NO. B00-111-A

+ Denotes location of well on United States Topographic Maps, scale 1 to 62,500, latitude and longitude lines being represented by border lines as shown.
 - Denotes one inch spaces on border line of original tracing



STATE OF WEST VIRGINIA
DEPARTMENT OF MINES
OIL AND GAS DIVISION



WELL RECORD

Permit No. 111-A

Oil or Gas Well Oil

(RIFD)

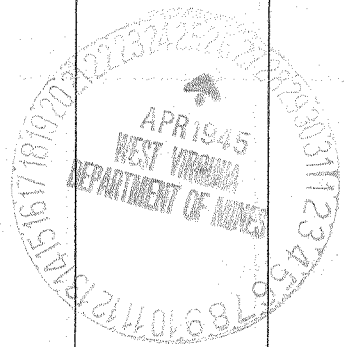
Company..... The Pure Oil Company
Address..... Box 551, Newark, Ohio
Farm LaFollette, Robson, & Prichard Acres. 5,000
Location (waters)..... Coal River
Well No. 9 Elev. 870'
District..... Sherman County Boone
The surface of tract is owned in fee by LaFollette, Robson, & Prichard Address (See form OG-9)
Mineral rights are owned by LaFollette, Robson, and Prichard Address (See form OG-9)
Drilling commenced..... July 24, 1923
Drilling completed..... October 12, 1923
Date Shot 10/17/23 From 2556' To 2568'
With 50 quarts nitroglycerin
Open Flow /10ths Water in..... Inch
/10ths Merc. in..... Inch
Volume..... No record Cu. Ft.
Rock Pressure..... lbs..... hrs.
Oil..... 5 bbls., 1st 24 hrs.
Fresh water..... feet..... feet
Salt water..... feet..... feet

Casing and Tubing	Used in Drilling	Left in Well	Packers
Size			Kind of Packer
16			
18			
10	<u>470'</u>	<u>470'</u>	Size of
8 1/4	<u>1370'</u>	<u>1370'</u>	Depth set
6 1/2	<u>1880'</u>	<u>1880'</u>	
5 3/16			Perf. top
3			Perf. bottom
2			Perf. top
Liners Used			Perf. bottom

CASING CEMENTED..... SIZE..... No. Ft..... Date

COAL WAS ENCOUNTERED AT 20 FEET 48 INCHES
310 FEET 60 INCHES 335 FEET 60 INCHES
FEET..... INCHES..... FEET..... INCHES

Formation	Color	Hard or Soft	Top	Bottom	Oil, Gas or Water	Depth Found	Remarks
Surface			0	20			
Coal			20	24			
Slate & Shells			24	50			
Sand			50	70			
Slate			70	110			
Lime Shells			110	200			
Sand			200	270			
Slate			270	300			
Sand			300	310			
Coal			310	315			
Sand			315	335			
Coal			335	340			
Sand			340	445			
Slate			445	530			
Sand			530	560			
Slate & Shells			560	655			
Sand			655	665			
Lime Shells			665	700			
Grampus			700	800			
Slate			800	820			
Sand			820	865			
Slate & Shells			865	950			
Salt Sand			950	1308			
Lime Shells			1308	1320			
Sand			1320	1370			
Lime Shells			1370	1500			
Maxon Sand			1500	1600			
Red Rock			1600	1650			
Slate & Shells			1650	1760			
Little Lime			1760	1790			
Pencil Cave			1790	1796			
Big Lime			1796	2100			
Big Injun			2100	2150			
Slate & Shells			2150	2240			
Wair Sand			2240	2280	Gas	2245'	
Slate & Shells			2280	2527			
Brown Shale			2527	2533			
Green Sand			2533	2568	Oil	2559' to 2568'	
Slate			2568	2571			



Total depth - 2571'

(Over)

AUG - 8 1945

